



Pioneer Energy Services

Dual Compensated Porosity Log

API No. 15-109-20,927-00-00

Company: **New Gulf Operating, LLC**
 Well: **Captain Kirk No. 1**
 Field: **Scott**
 County: **Scott** State: **Kansas**

Location: **388' FNL & 1,595' FEL**

Sec: **18** Twp: **17S** Rge: **33W**

Other Services: **DIL MEI/BHCS**

Permanent Datum: **Ground Level** Elevation: **3070**
 Log Measured From: **Kelly Bushing** 9 Ft. Above Perm. Datum
 Drilling Measured From: **Kelly Bushing**

K.B. 3079
 D.F. G.L. 3070

Date: **3/13/2013**

Run Number: **One**

Type Log: **CNL / CDL**

Depth Driller: **4950**

Depth Logger: **4949**

Bottom Logged Interval: **4928**

Top Logged Interval: **3480**

Type Fluid In Hole: **Chemical**

Salinity, PPM CL: **6800**

Density: **9.4**

Level: **Full**

Max. Rec. Temp. F: **126**

Operating Rig Time: **5 Hours**

Equipment -- Location: **108 Hays**

Recorded By: **J. Long**

Witnessed By: **Curtis Covey**

Borehole Record		Casing Record				
Run No.	Bit From	To	Size	Wgt	From	To
One	12.25	00	264	8.625	23#	00
Two	7.875	264	TD			264

<<< Fold Here >>>

All interpretations are opinions based on inferences from electrical or other measurements and we cannot and do not guarantee the accuracy or correctness of any interpretation, and we shall not, except in the case of gross or willful negligence on our part, be liable or responsible for any loss, costs, damages, or expenses incurred or sustained by anyone resulting from any interpretation made by any of our officers, agents or employees. These interpretations are also subject to our general terms and conditions set out in our current Price Schedule.

Comments

Thank you for using Log-Tech, Inc.
 (785) 625-3858

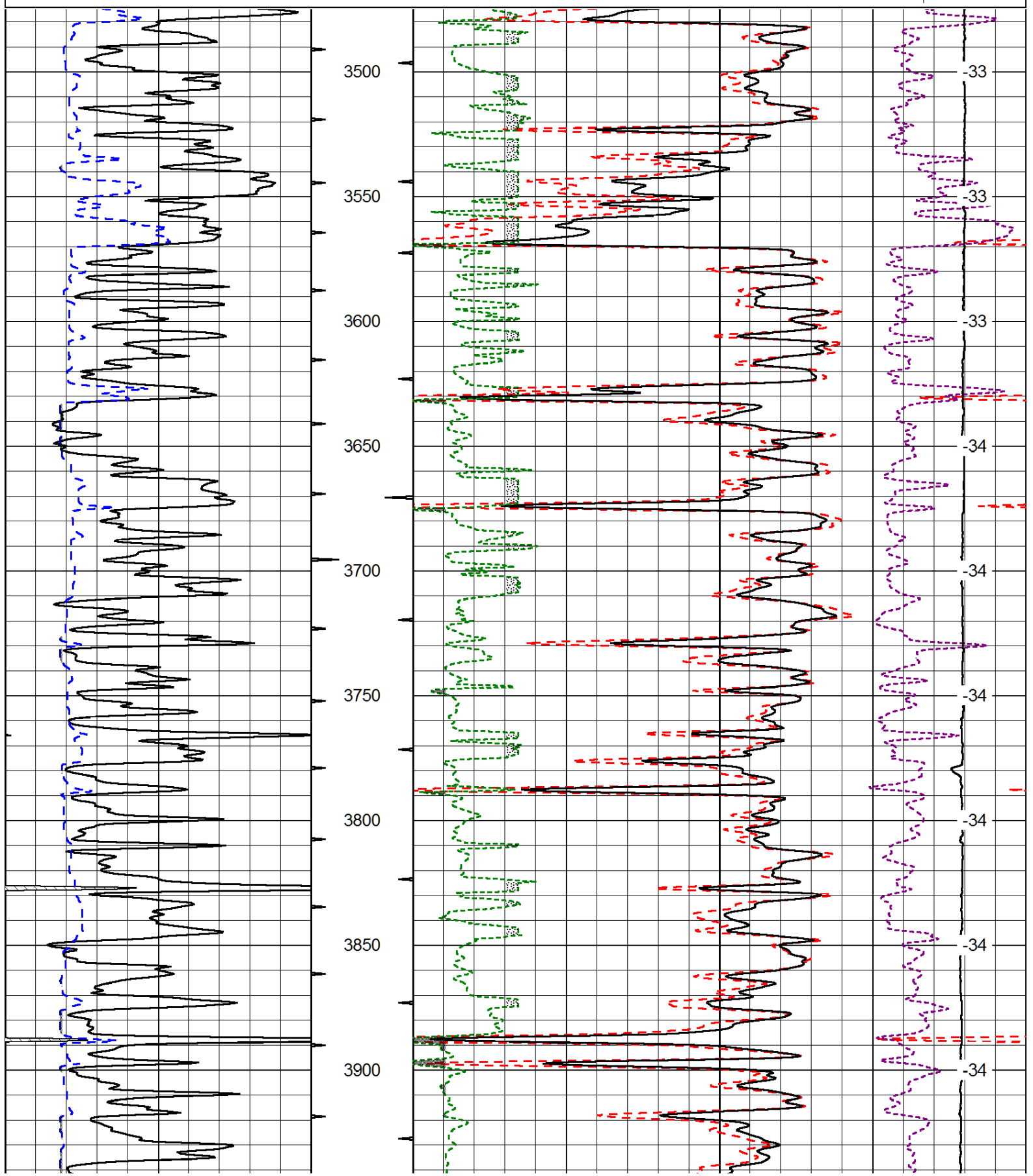
Scott City, 8 North to Highway 4 & Highway 83 Intersection, 6 West, 1 South, East Into

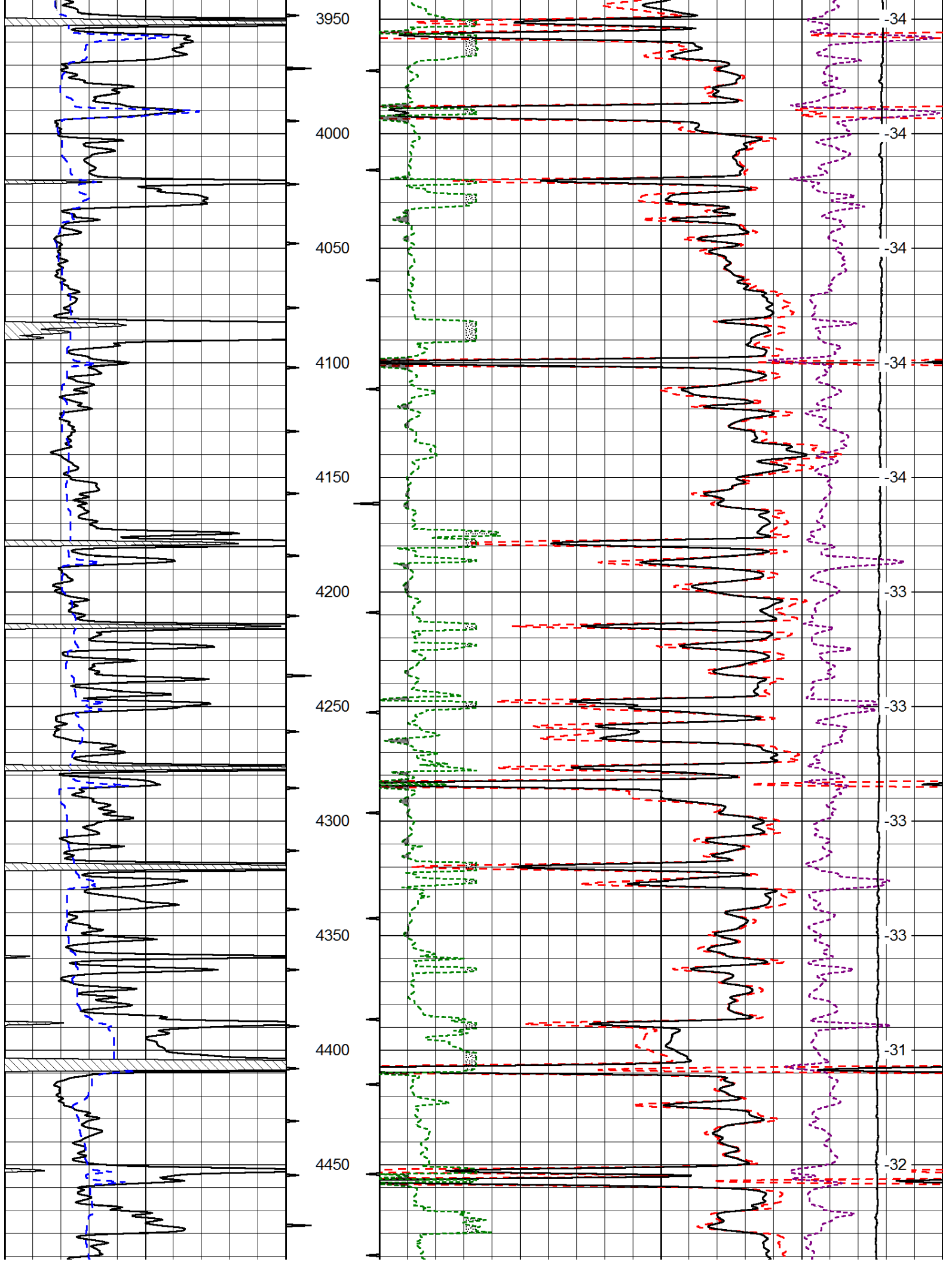
Database File: newgulf_captankirk_1hd.db
 Dataset Pathname: dil/newstck
 Presentation Format: cdl
 Dataset Creation: Wed Mar 13 13:23:49 2013
 Charted by: Depth in Feet scaled 1:600

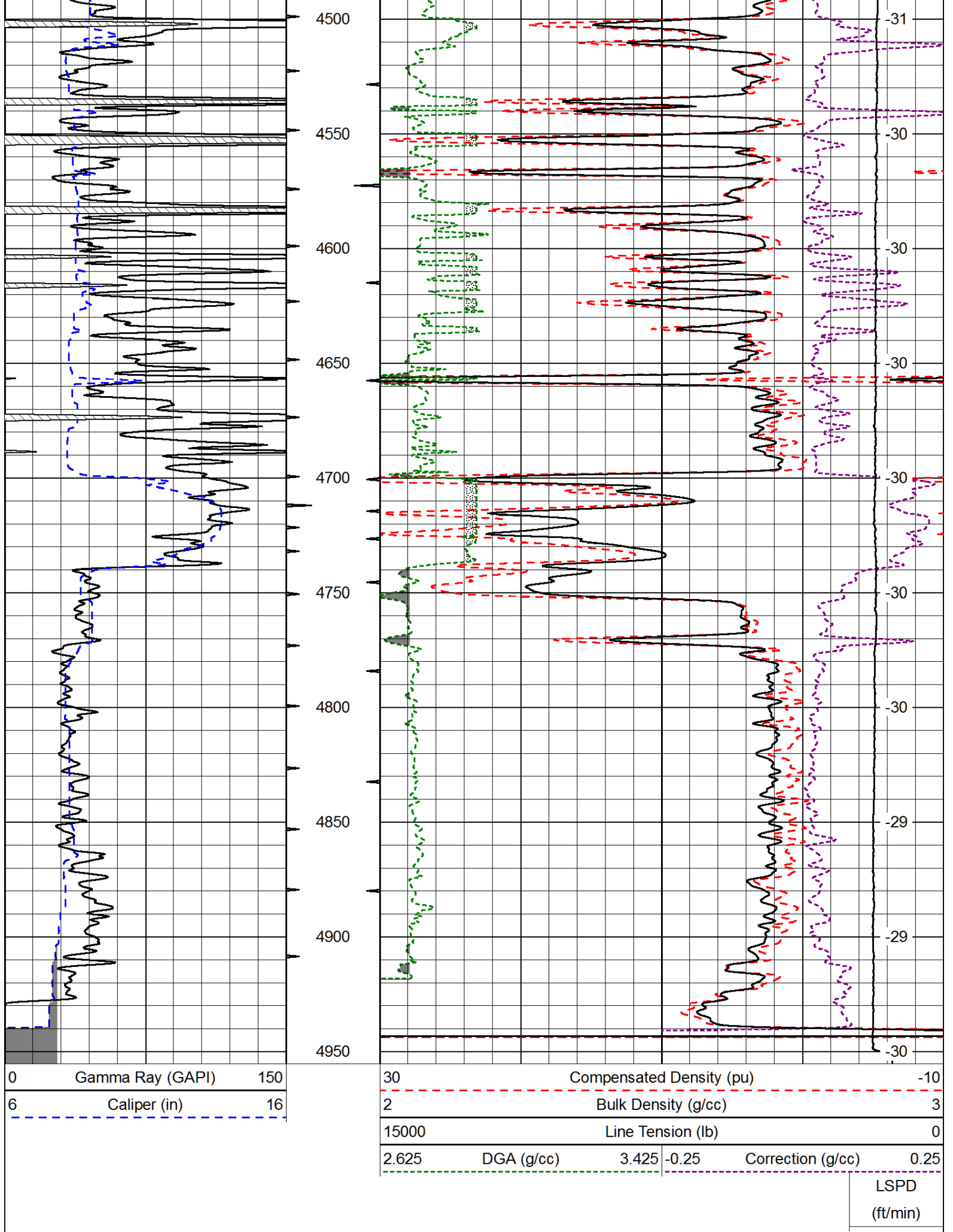
0	Gamma Ray (GAPI)	150
6	Caliper (in)	16

30	Compensated Density (pu)		-10
2	Bulk Density (g/cc)		3
15000	Line Tension (lb)		0
2.625	DGA (g/cc)	3.425	-0.25
			Correction (g/cc)
			0.25

LSPD
(ft/min)







0 Gamma Ray (GAPI) 150

6 Caliper (in) 16

30 Compensated Density (pu) -10

2 Bulk Density (g/cc) 3

15000 Line Tension (lb) 0

2.625 DGA (g/cc) 3.425 -0.25 Correction (g/cc) 0.25

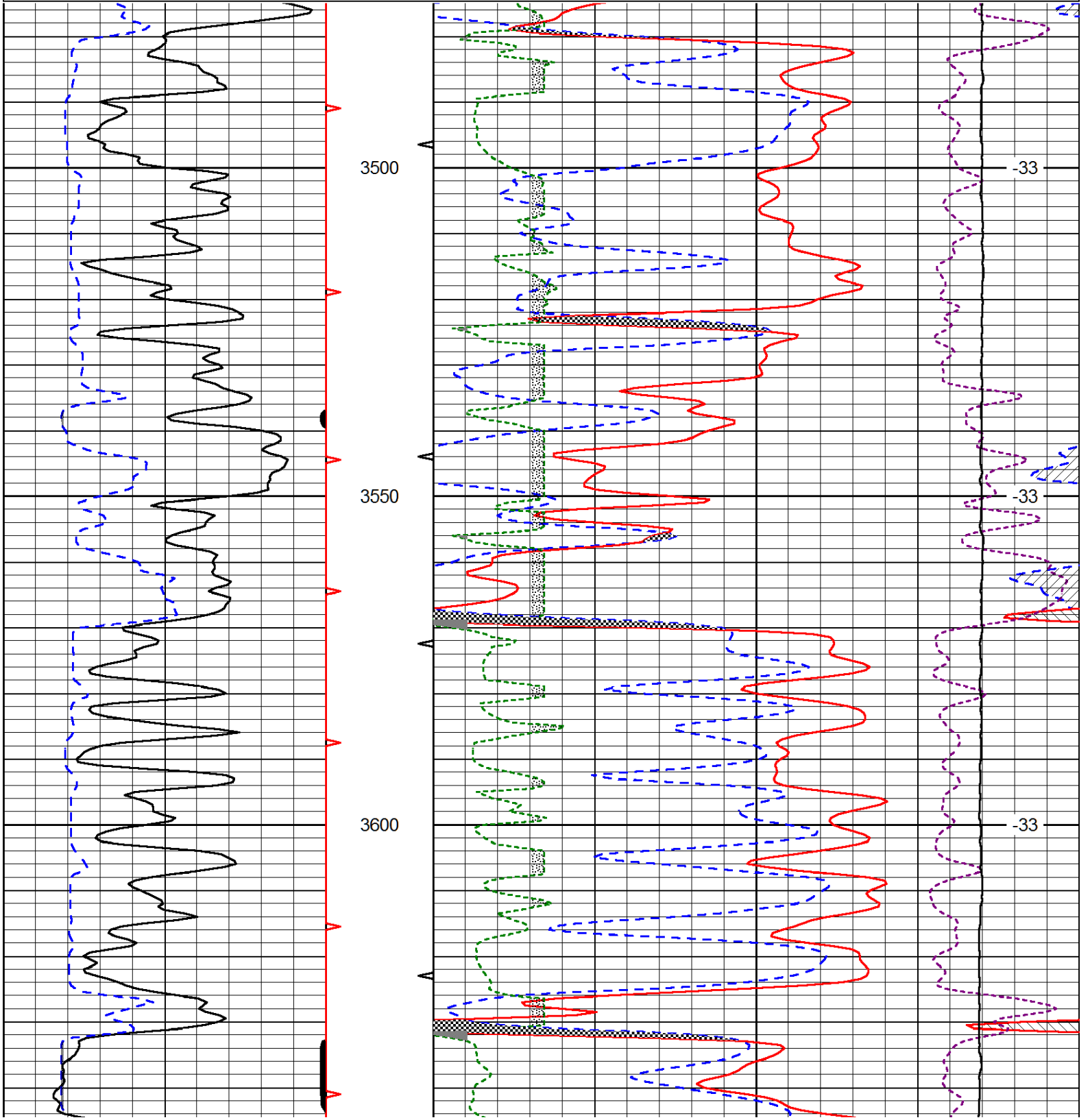
LSPD
(ft/min)

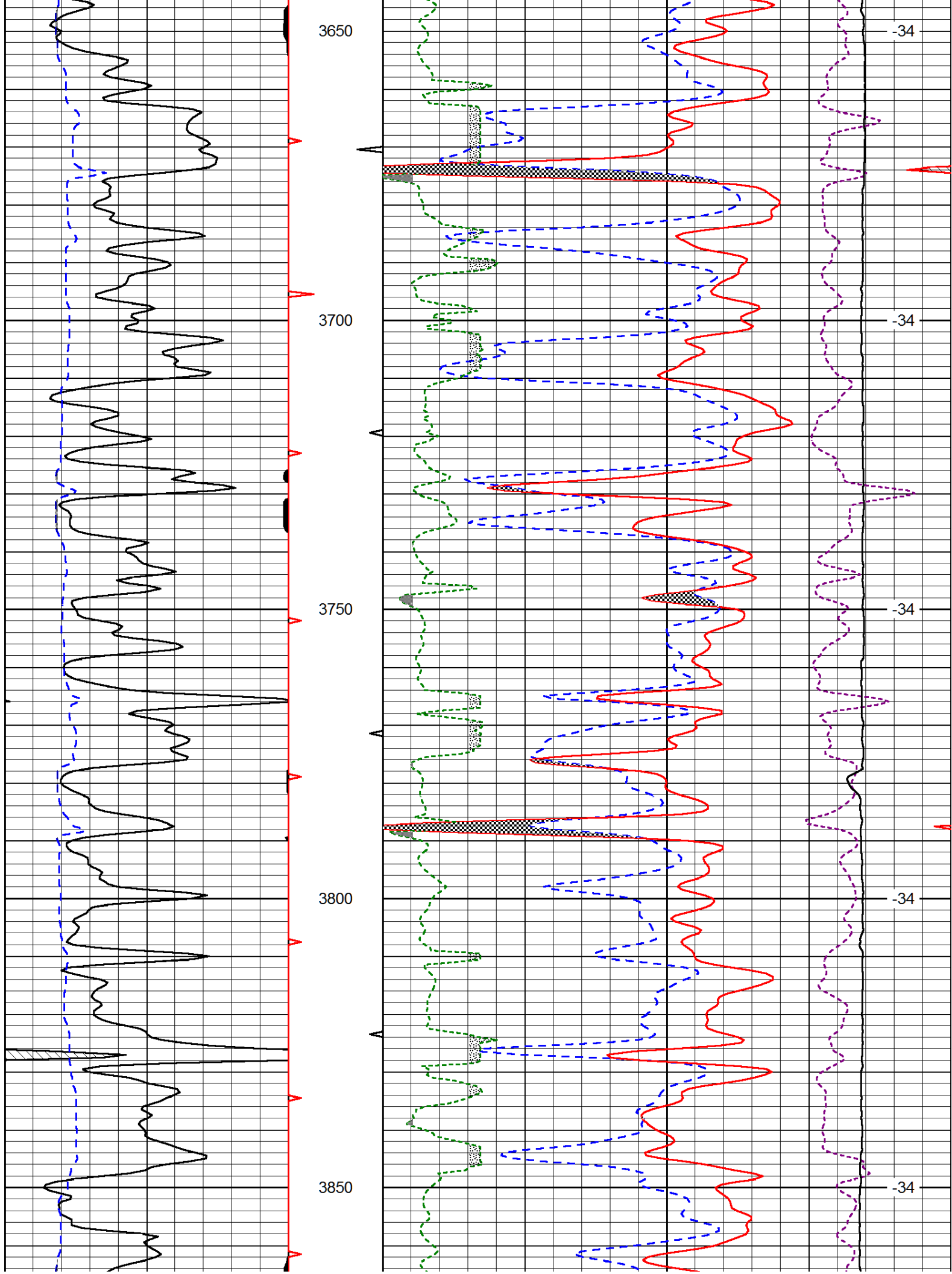
Database File: newgulf_captankirk_1hd.db
 Dataset Pathname: dil/newstck
 Presentation Format: cndlspec
 Dataset Creation: Wed Mar 13 13:23:49 2013
 Charted by: Depth in Feet scaled 1:240

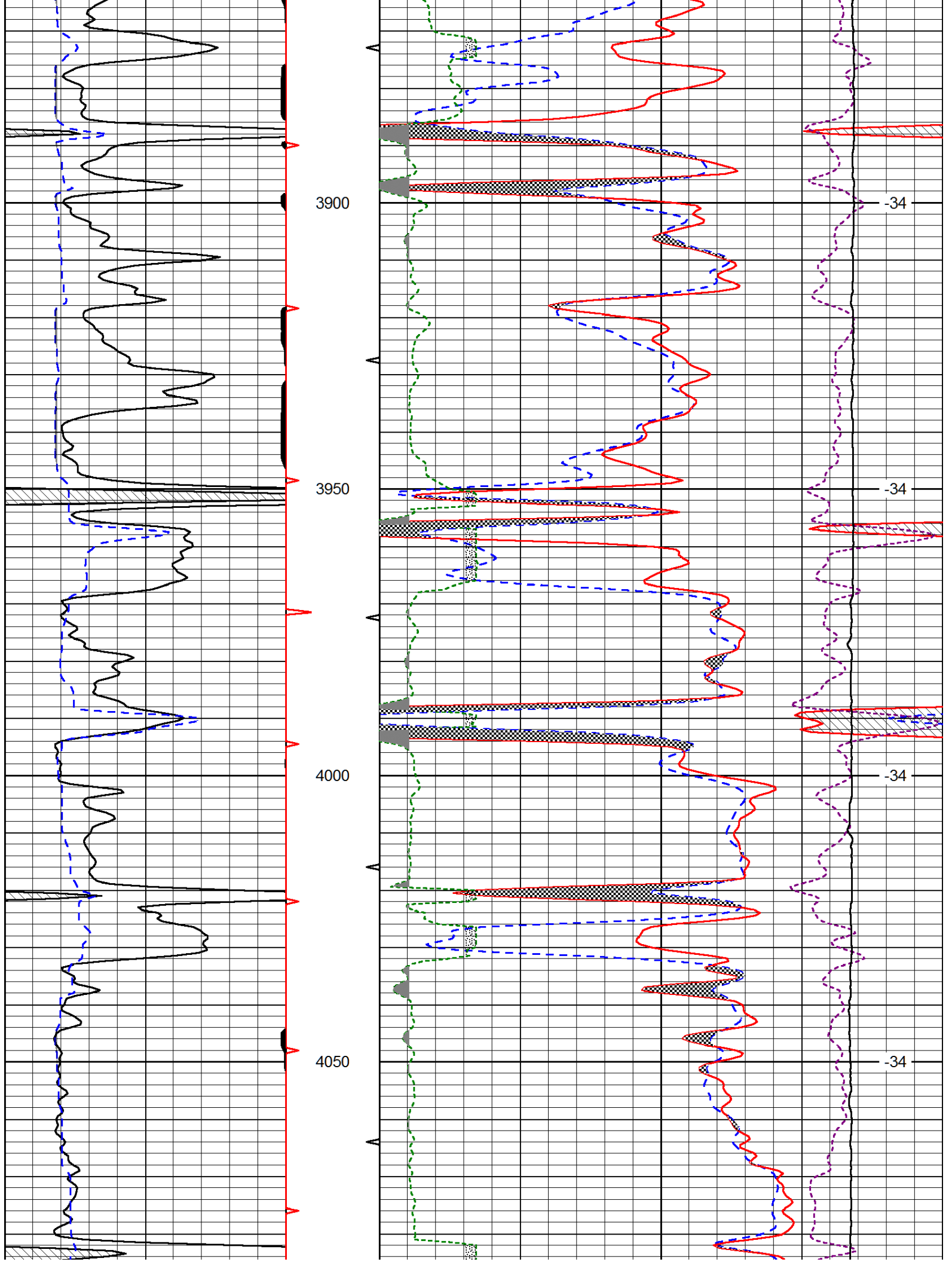
0	Gamma Ray (GAPI)	150
6	Caliper (in)	16

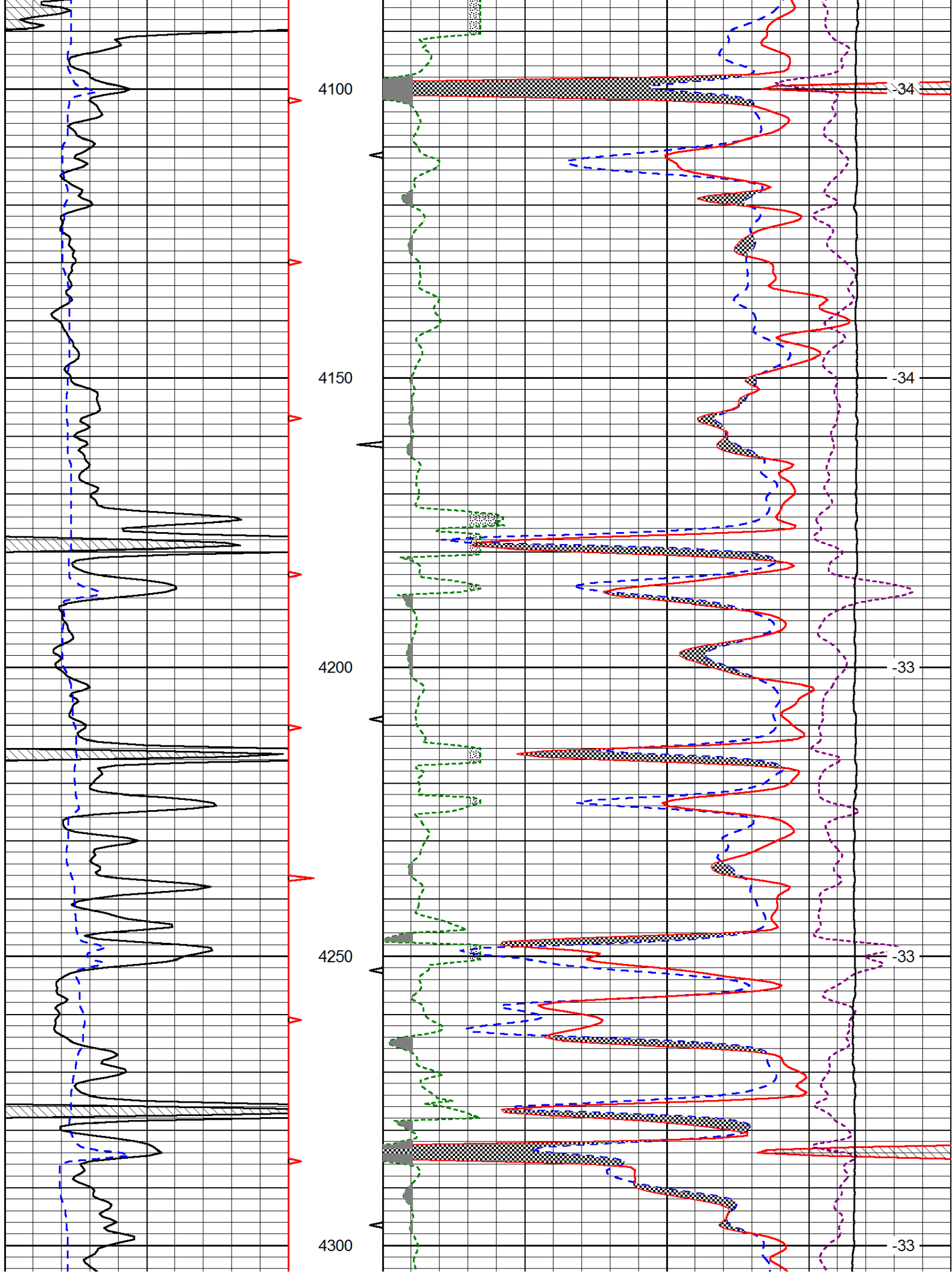
30	CNLS (pu)		-10
30	Compensated Density (2.71 ma) (pu)		-10
2.625	DGA (g/cc)	3.425	-0.25
		Correction (g/cc)	0.25
10000	Line Tension (lb)		0

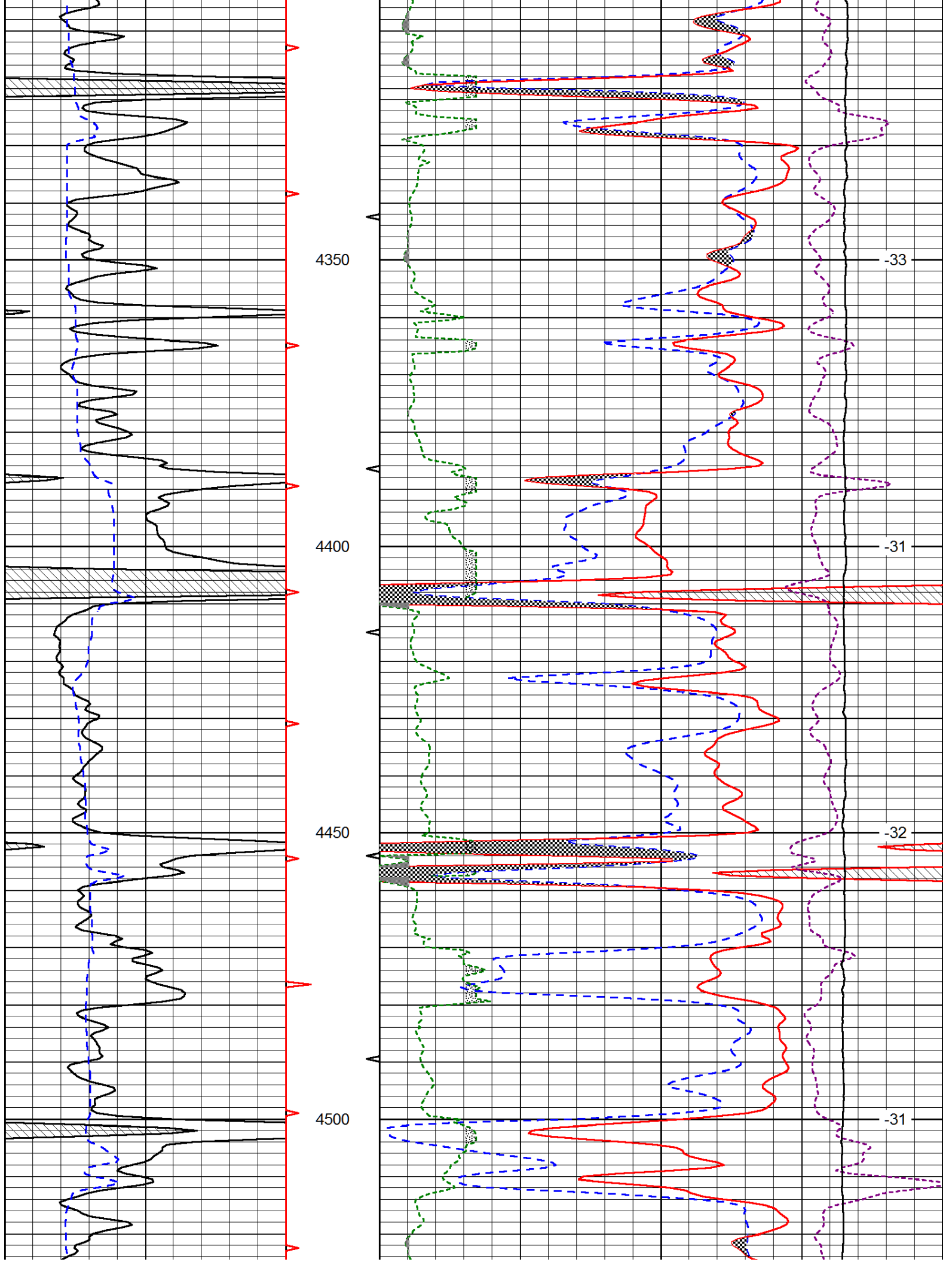
LSPD
(ft/min)

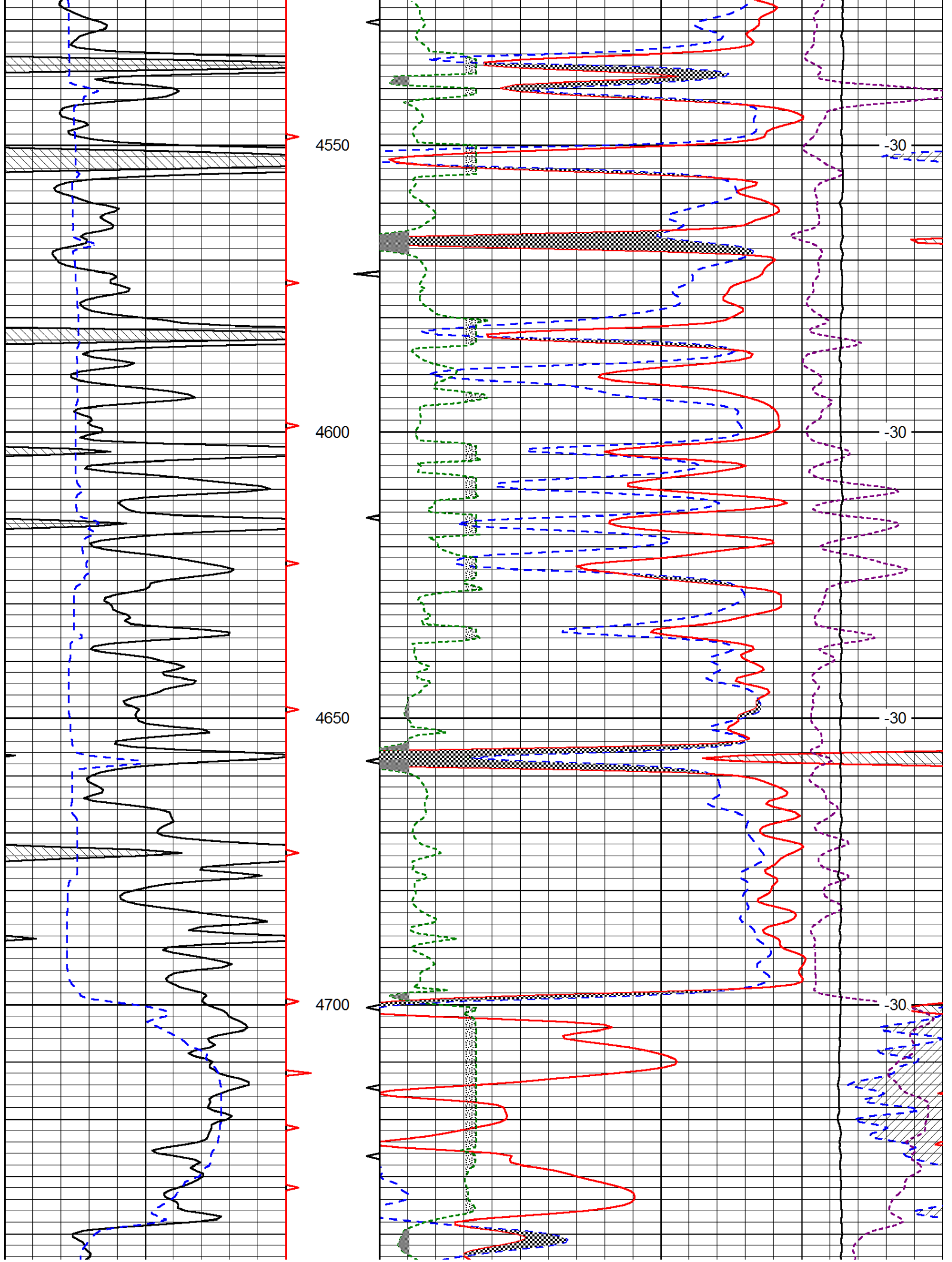


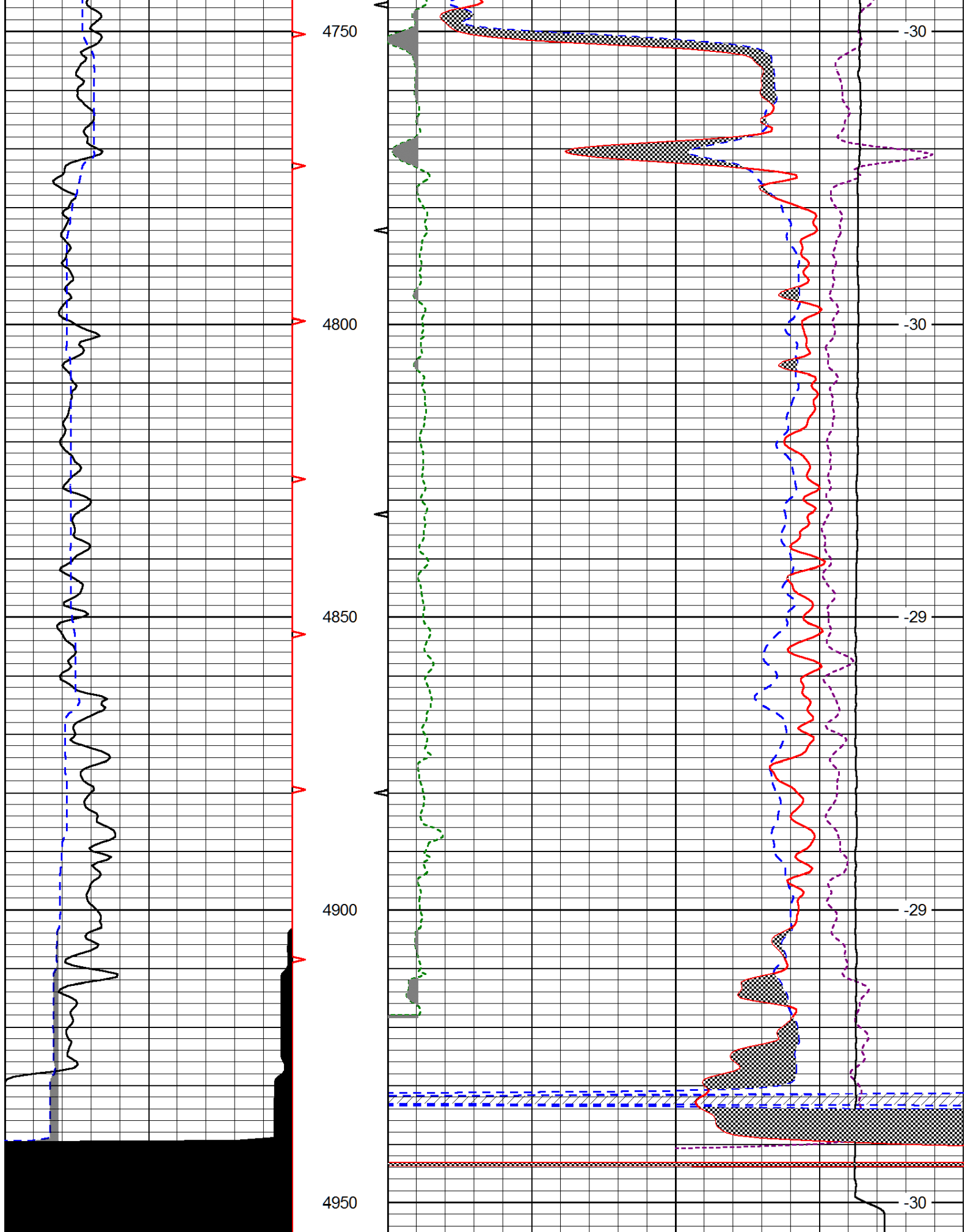












0	Gamma Ray (GAPI)	150
6	Caliper (in)	16

30	CNLS (pu)	-10
30	Compensated Density (2.71 ma) (pu)	-10

2.625	DGA (g/cc)	3.425	-0.25	Correction (g/cc)	0.25
10000	Line Tension (lb)				0
					LSPD (ft/min)