



Pioneer Energy Services

Dual Induction Log

API No.	15-109-20,927-00-00		
Company	New Gulf Operating, LLC		
Well	Captain Kirk No. 1		
Field	Scott		
County	State	Kansas	
Location	388' FNL & 1,595' FEL		
Sec: 18	Twp: 17S	Rge: 33W	
Permanent Datum	Ground Level	Elevation 3070	
Log Measured From	Kelly Bushing	9 Ft. Above Perm. Datum	
Drilling Measured From	Kelly Bushing	K.B. 3079 D.F. 3070 G.L. 3070	
Other Services	CNL/CDL MEL/BHCS		

Date	3/13/2013	
Run Number	One	
Depth Driller	4950	
Depth Logger	4949	
Bottom Logged Interval	4948	
Top Log Interval	250	
Casing Driller	8.625 @ 264	
Casing Logger	266	
Bit Size	7.875	
Type Fluid in Hole	Chemical	
Salinity, ppm CL	6800	
Density / Viscosity	9.4	59
pH / Fluid Loss	10.5	6.8
Source of Sample	Flowline	
Rm @ Meas. Temp	.36	@ 72
Rmf @ Meas. Temp	.27	@ 72
Rmc @ Meas. Temp	.49	@ 72
Source of Rmf / Rmc	Charts	
Rm @ BHT	.21	@ 126
Operating Rig Time	5 Hours	
Max Rec. Temp. F	126	
Equipment Number	108	
Location	Hays	
Recorded By	J. Long	
Witnessed By	Curtis Covey	Danny Birdwell
		Jim Henkle

<<< Fold Here >>>

All interpretations are opinions based on inferences from electrical or other measurements and we cannot and do not guarantee the accuracy or correctness of any interpretation, and we shall not, except in the case of gross or willful negligence on our part, be liable or responsible for any loss, costs, damages, or expenses incurred or sustained by anyone resulting from any interpretation made by any of our officers, agents or employees. These interpretations are also subject to our general terms and conditions set out in our current Price Schedule.

Comments

Thank you for using Log-Tech, Inc.
(785) 625-3858

Scott City, 8 North to Highway 4 & Highway 83 Intersection, 6 West, 1 South, East Into

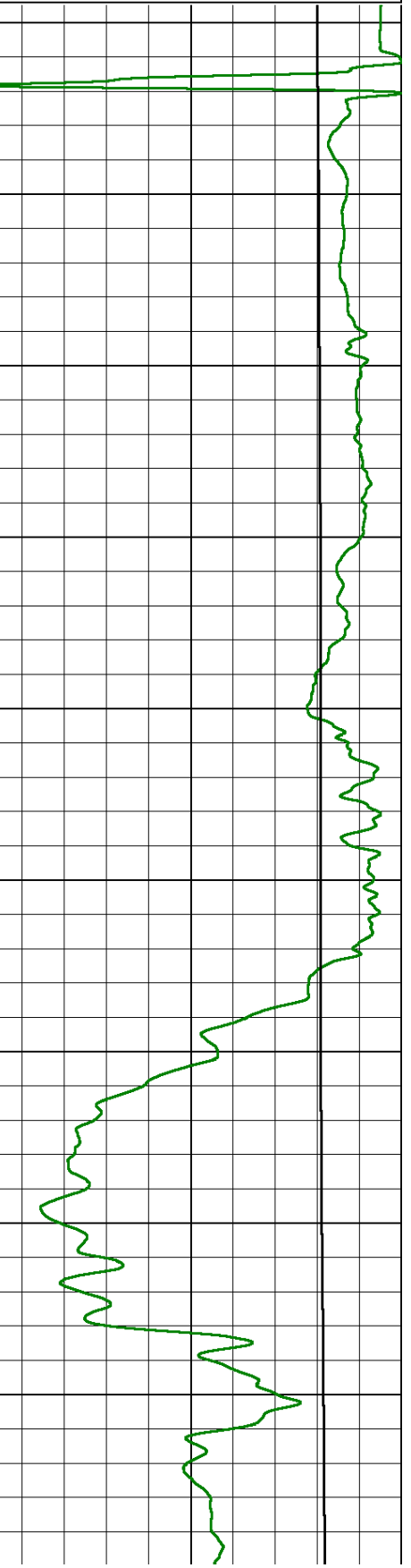
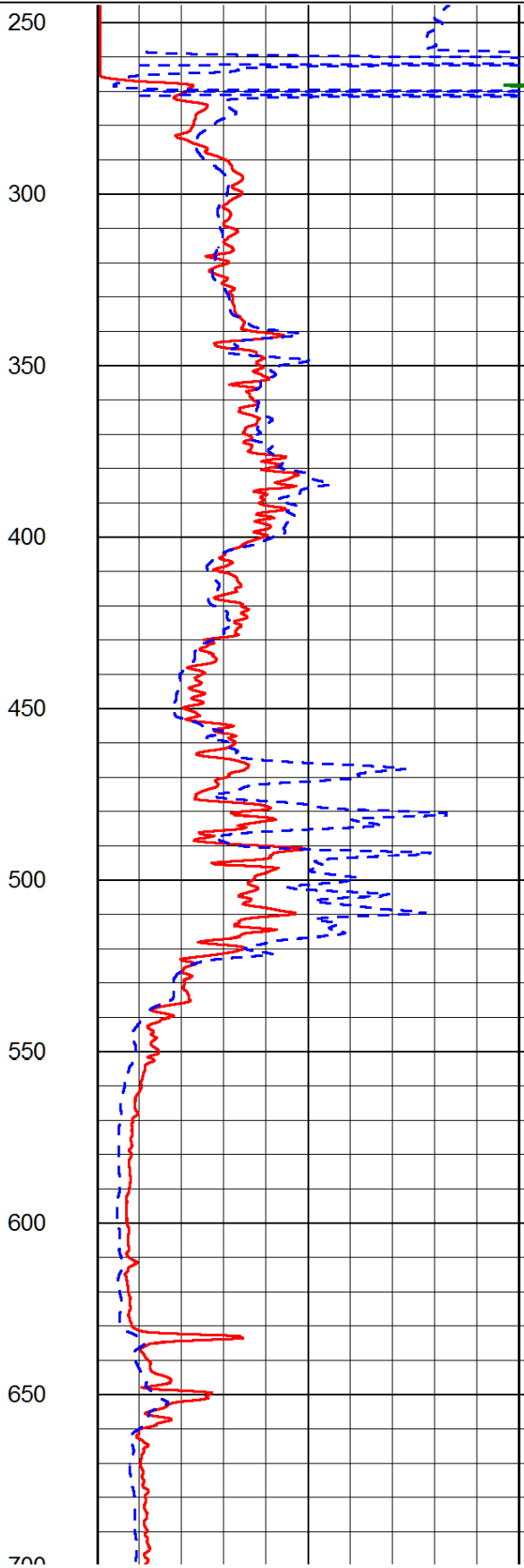
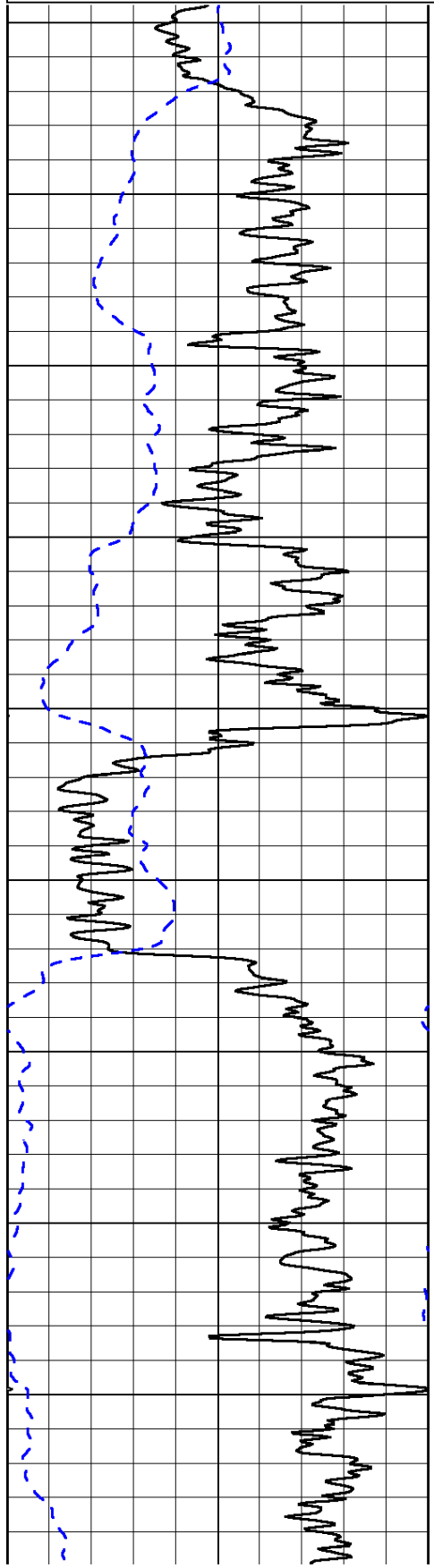
Database File: newgulf_captankirk_1hd.db
 Dataset Pathname: dil/newstck
 Presentation Format: dil2in
 Dataset Creation: Wed Mar 13 13:23:49 2013
 Charted by: Depth in Feet scaled 1:600

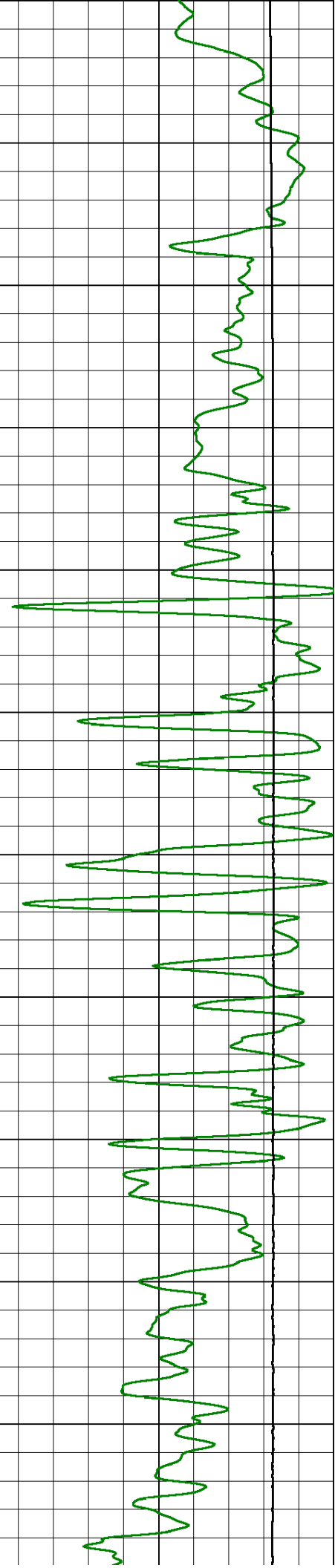
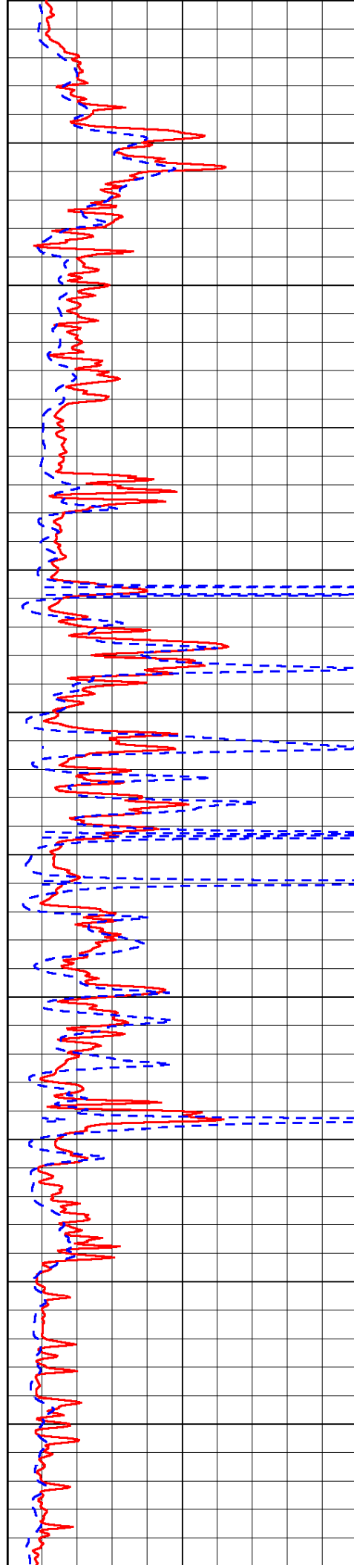
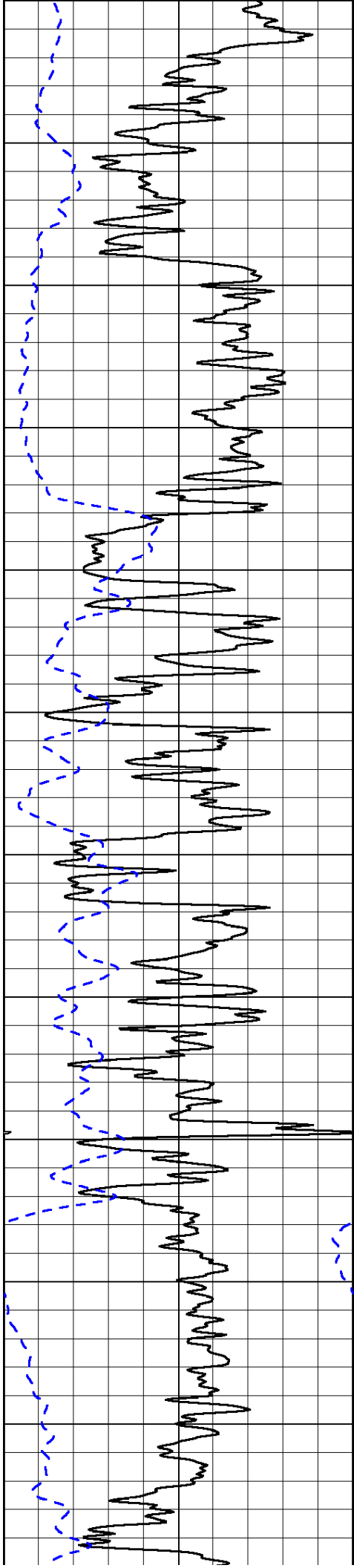
0	Gamma Ray (GAPI)	150
-200	SP (mV)	0

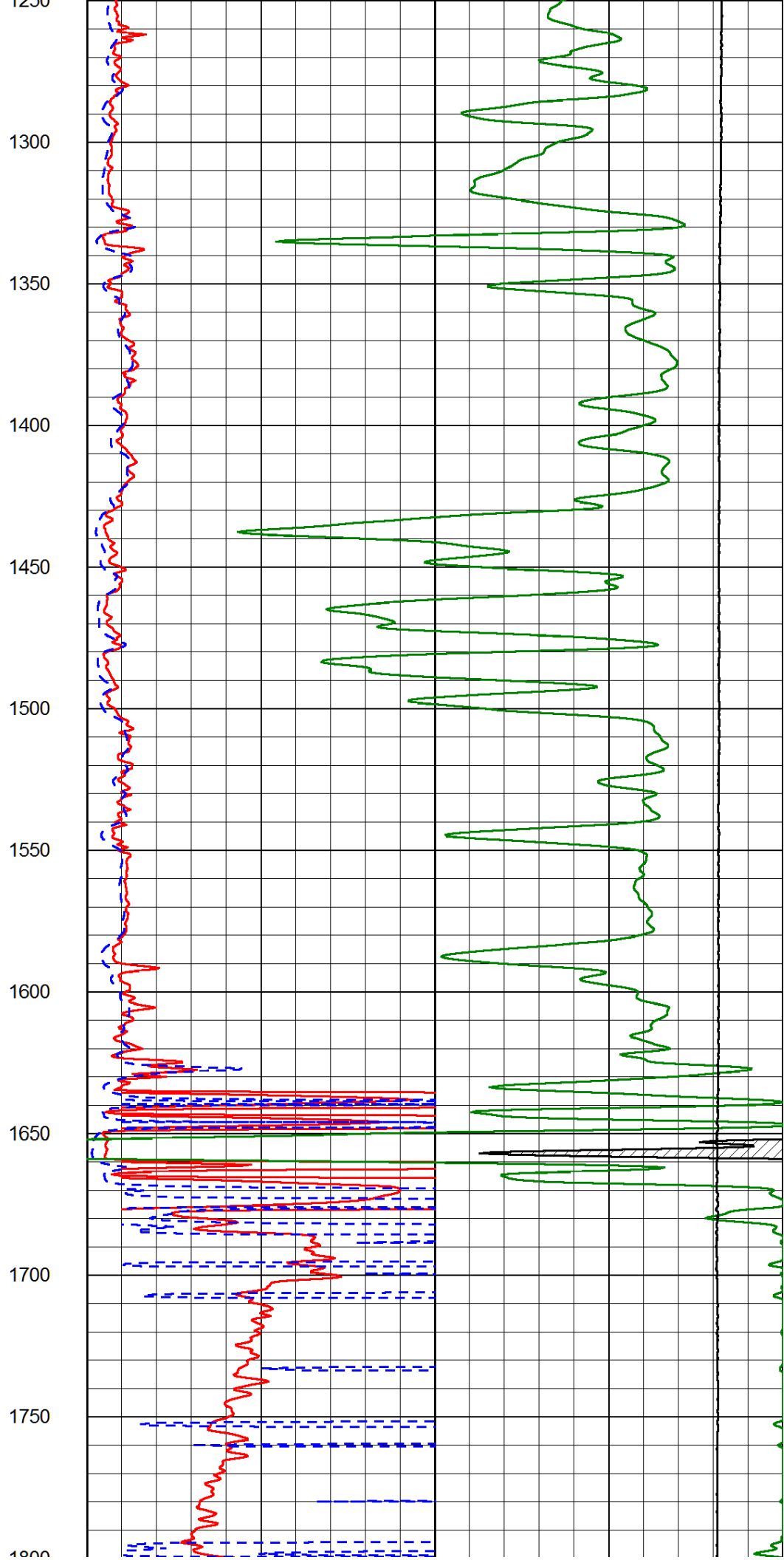
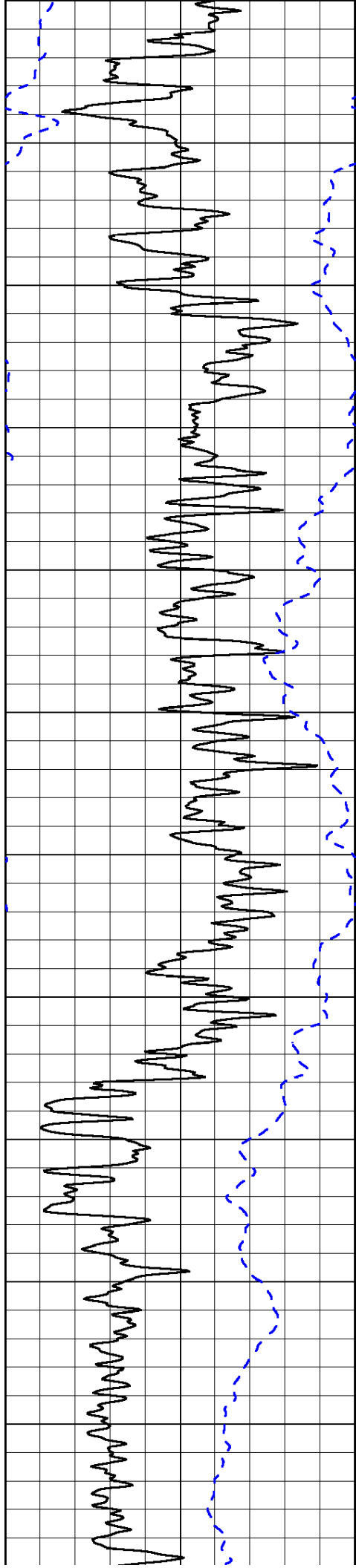
0	Shallow Resistivity (Ohm-m)	50
0	Deep Resistivity (Ohm-m)	50

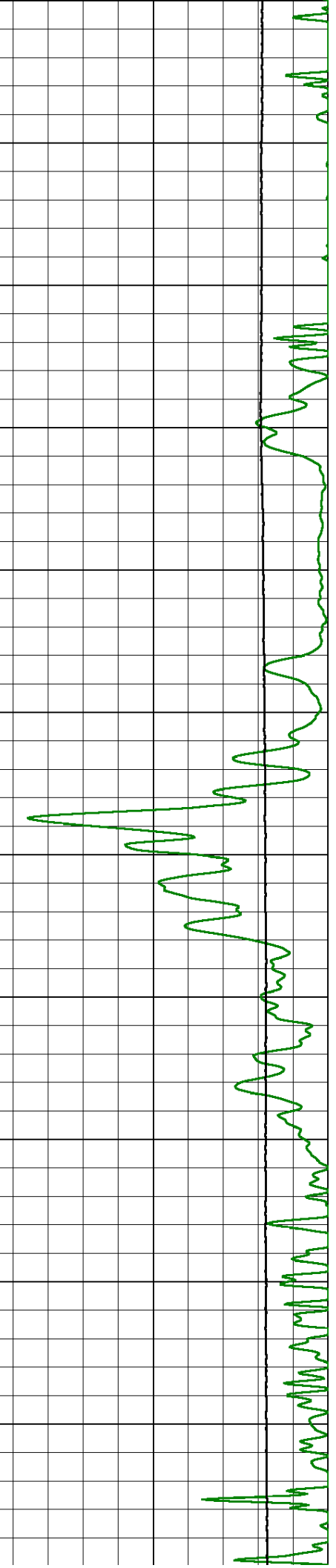
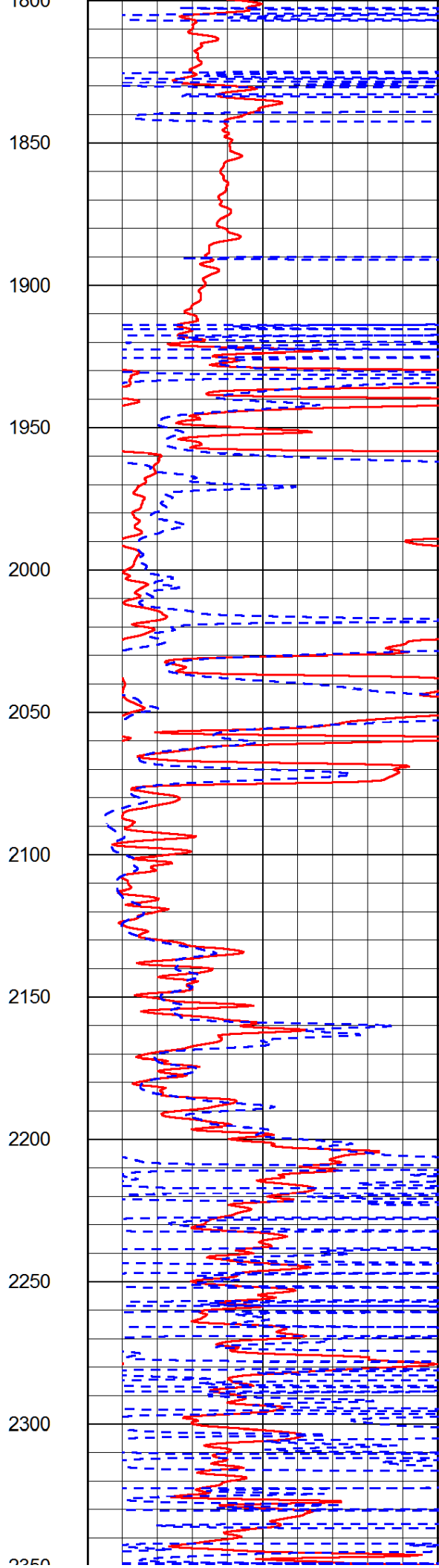
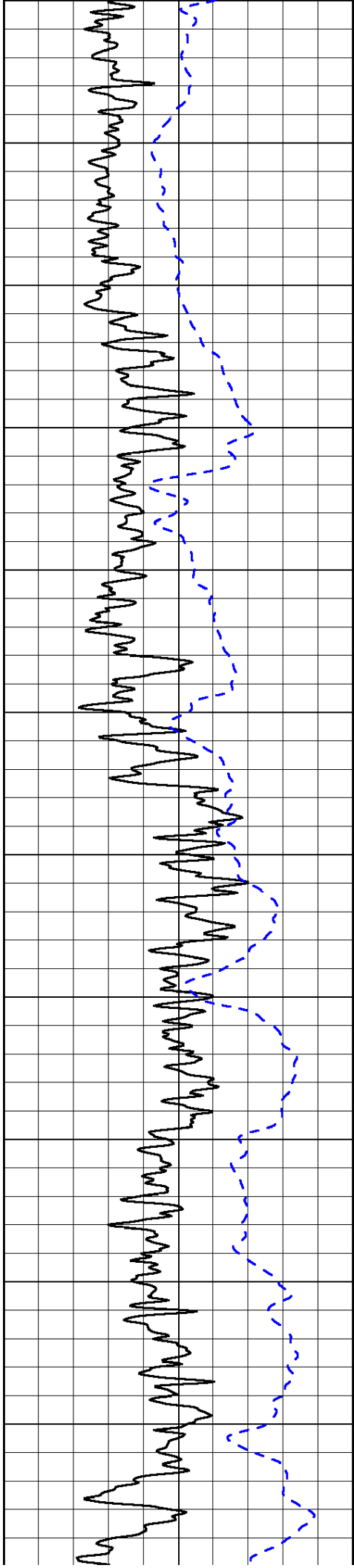
1000	Conductivity (Ohm-m)	0
15000	Line Tension (lb)	0

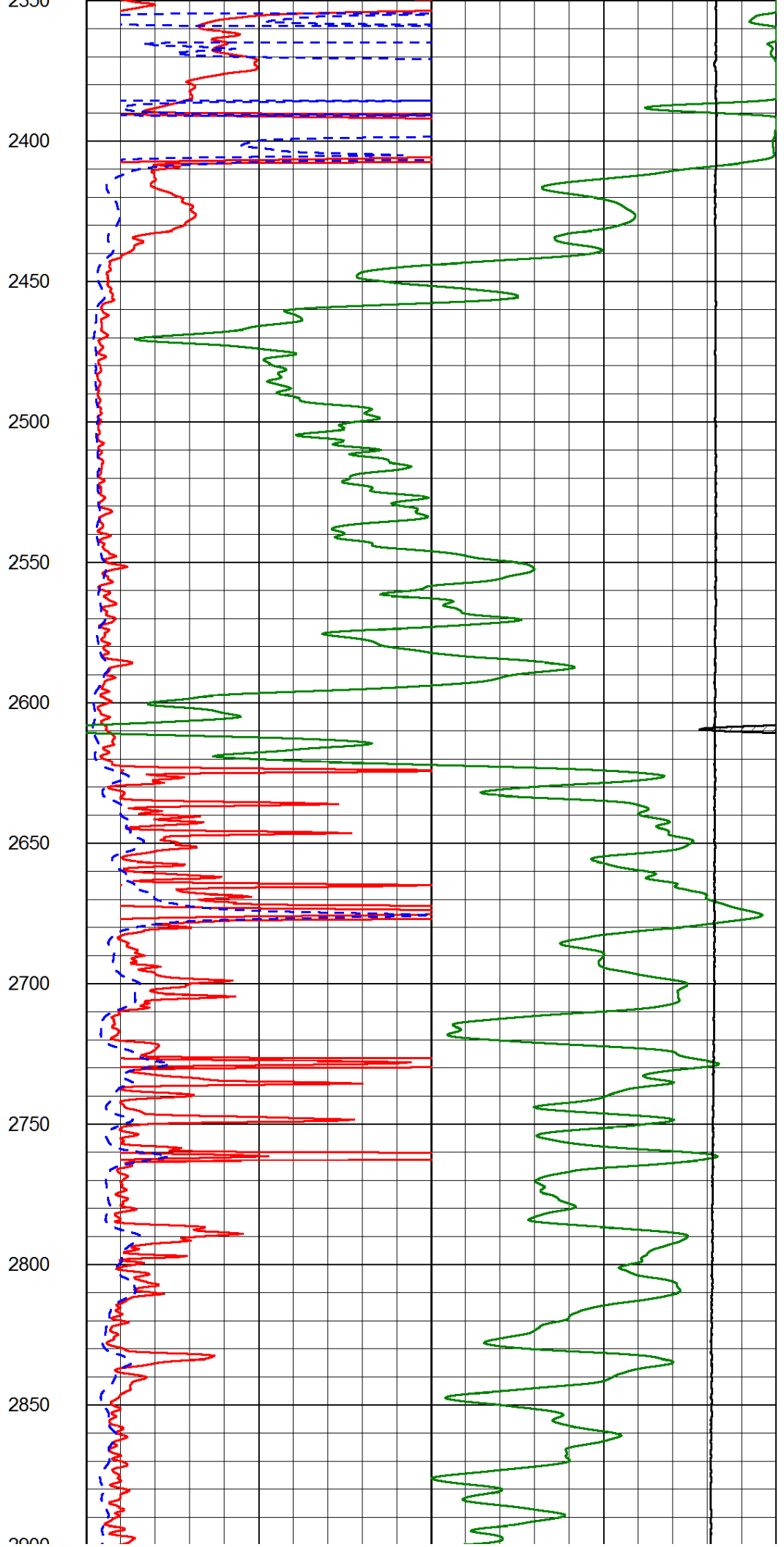
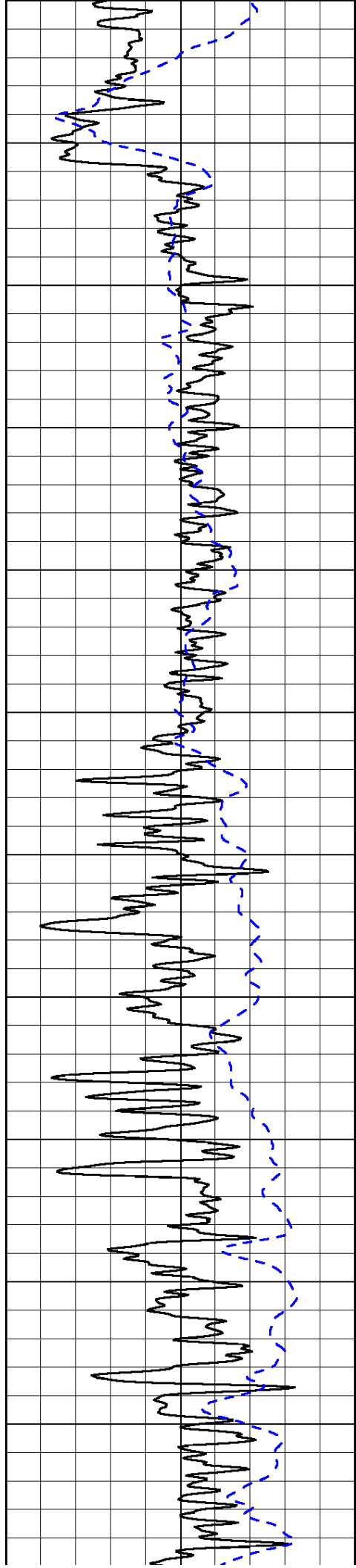
Shallow Resistivity		
50	(Ohm-m)	500
50	Deep Resistivity (Ohm-m)	500

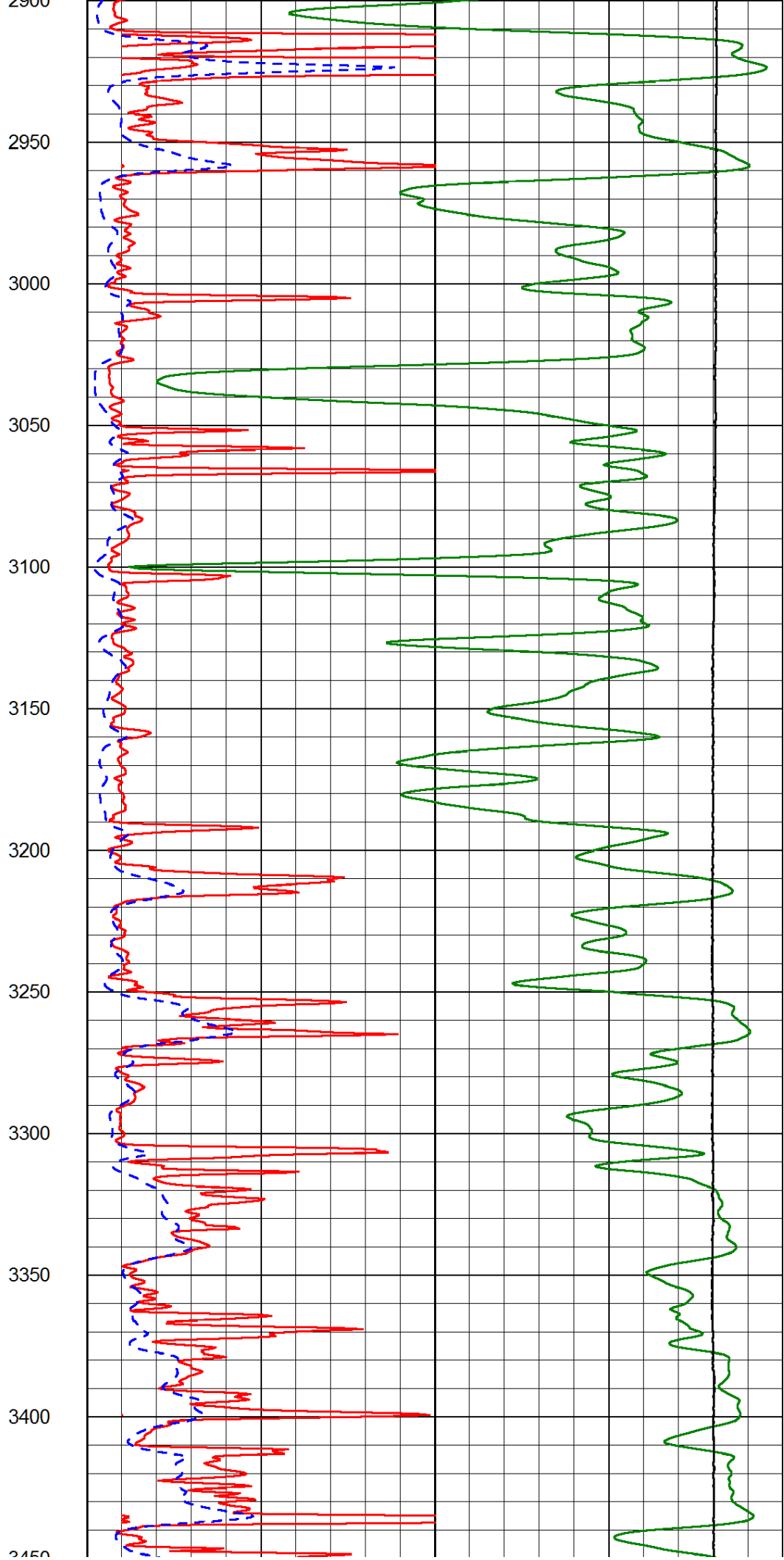
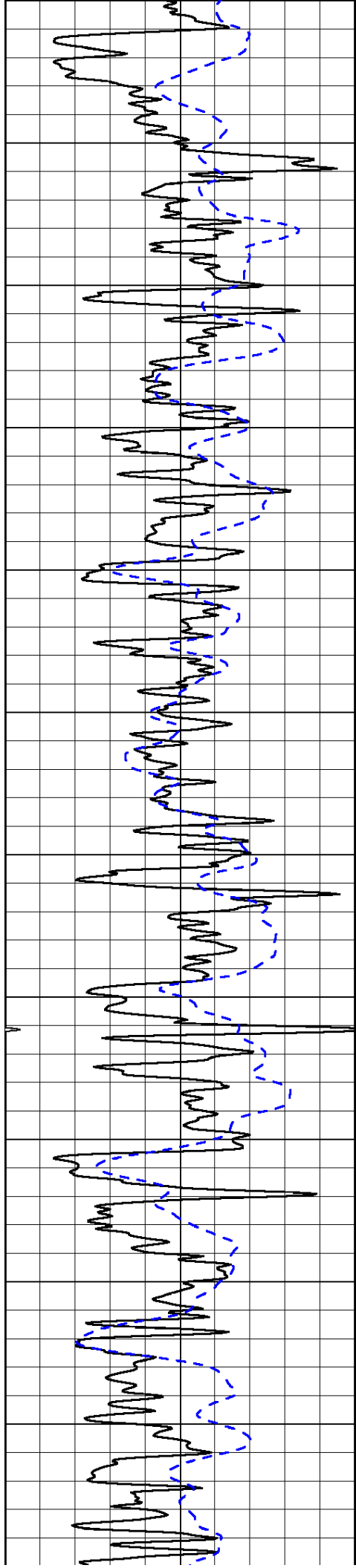


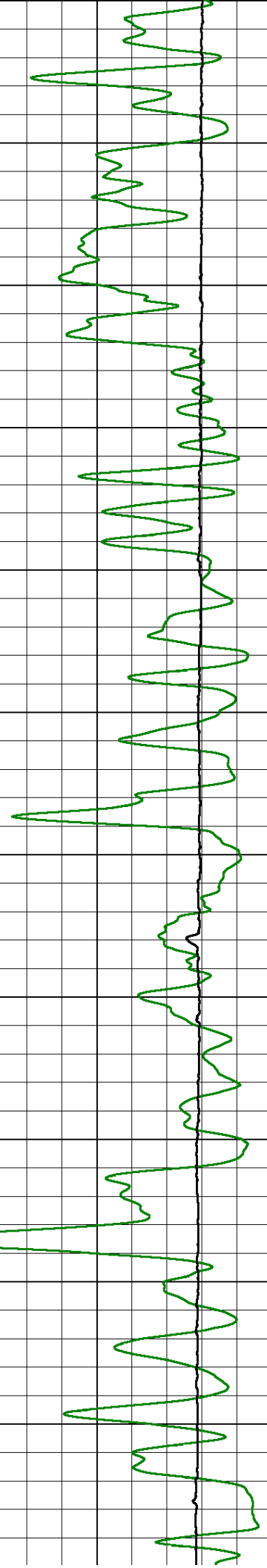
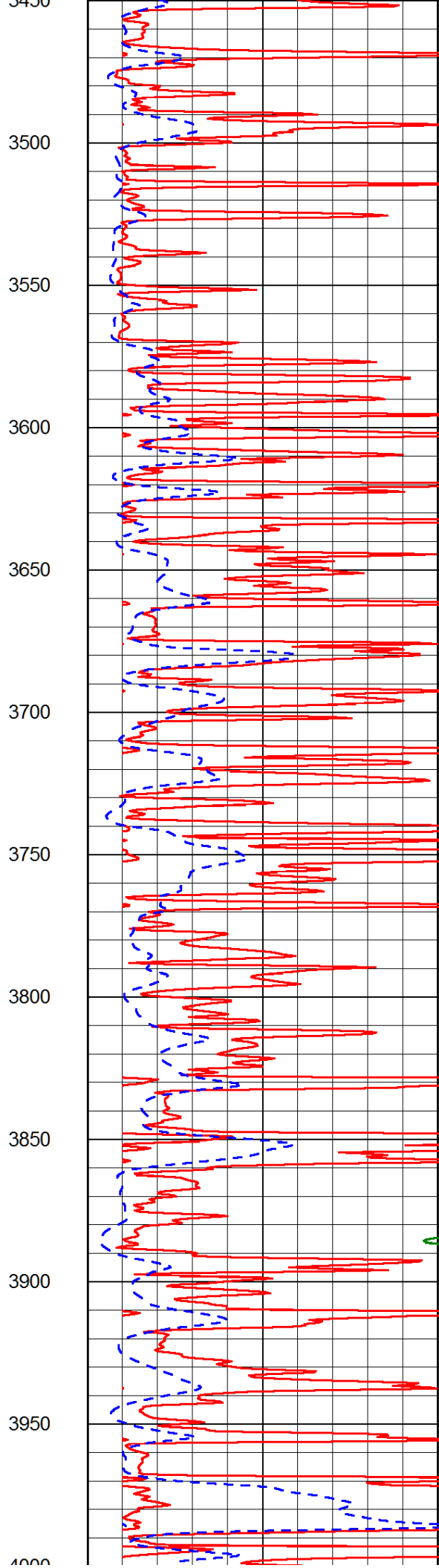
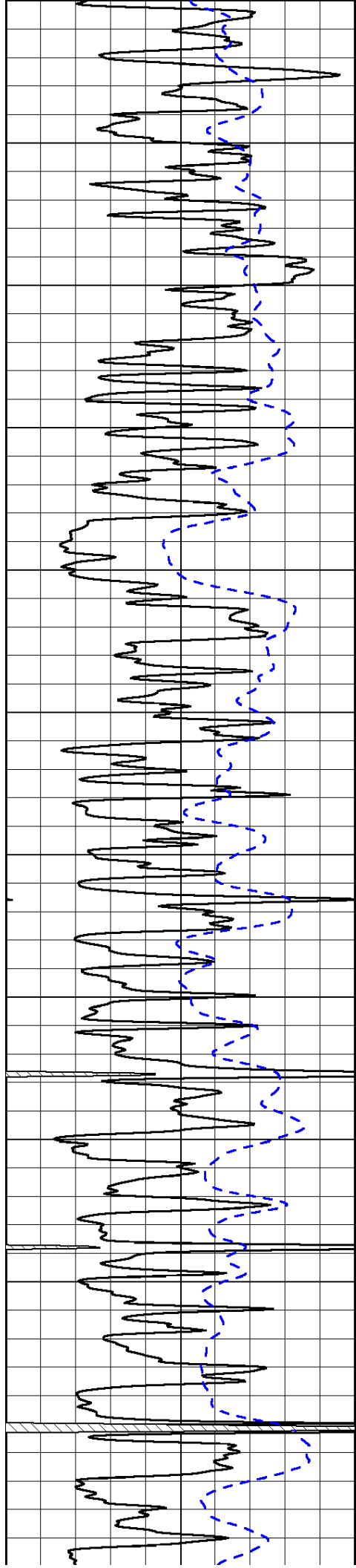


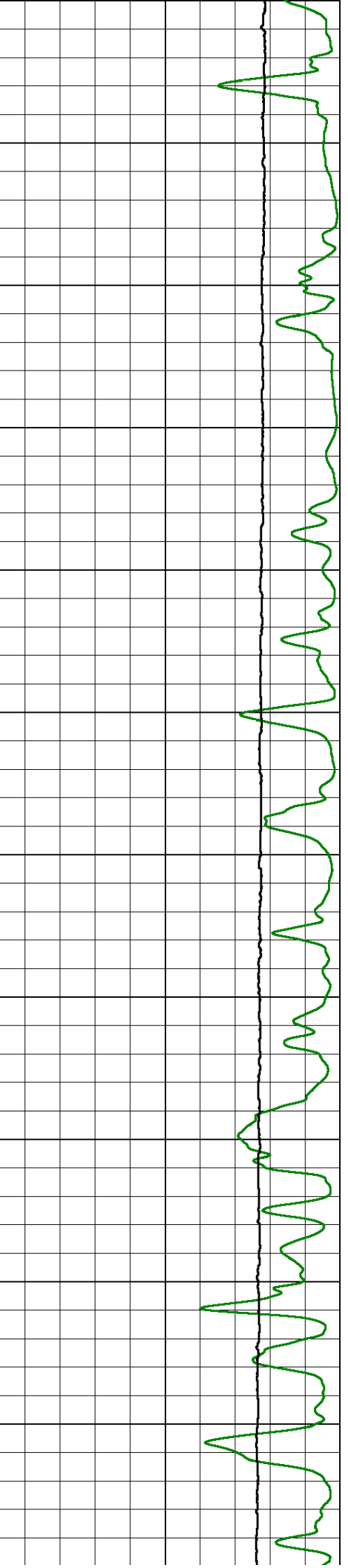
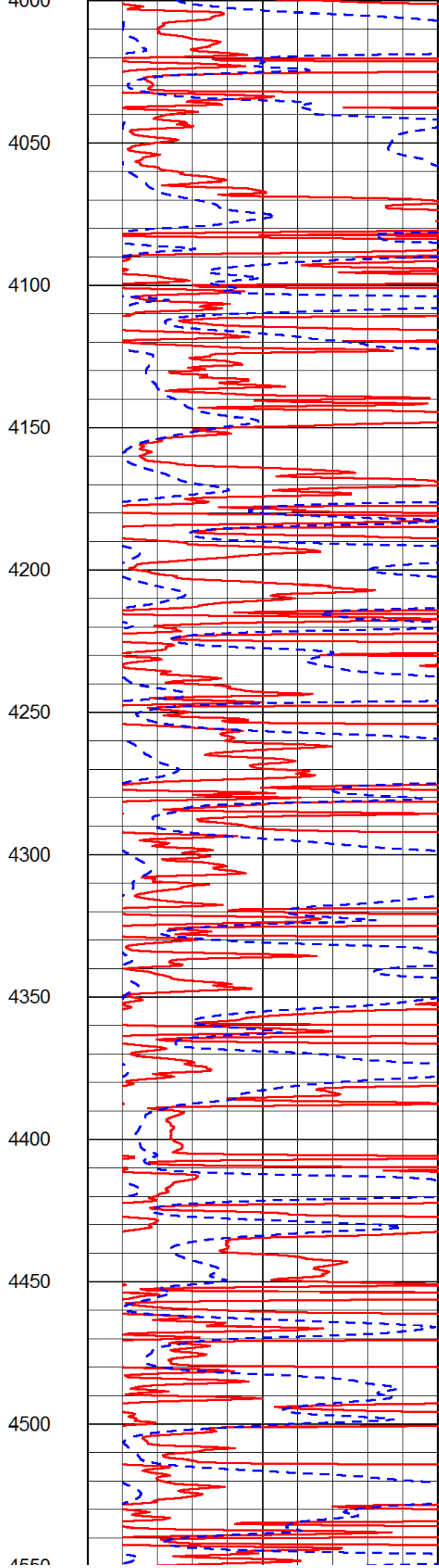
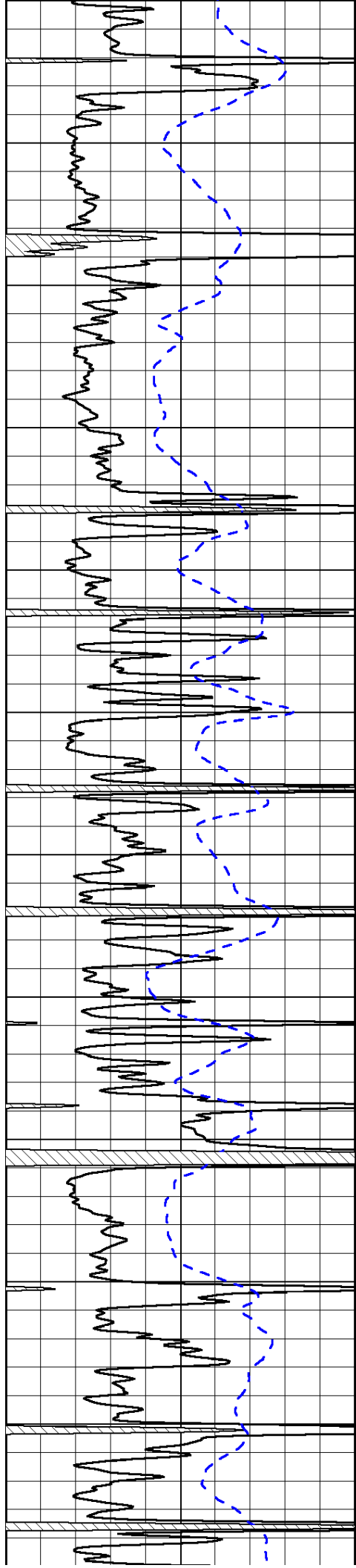


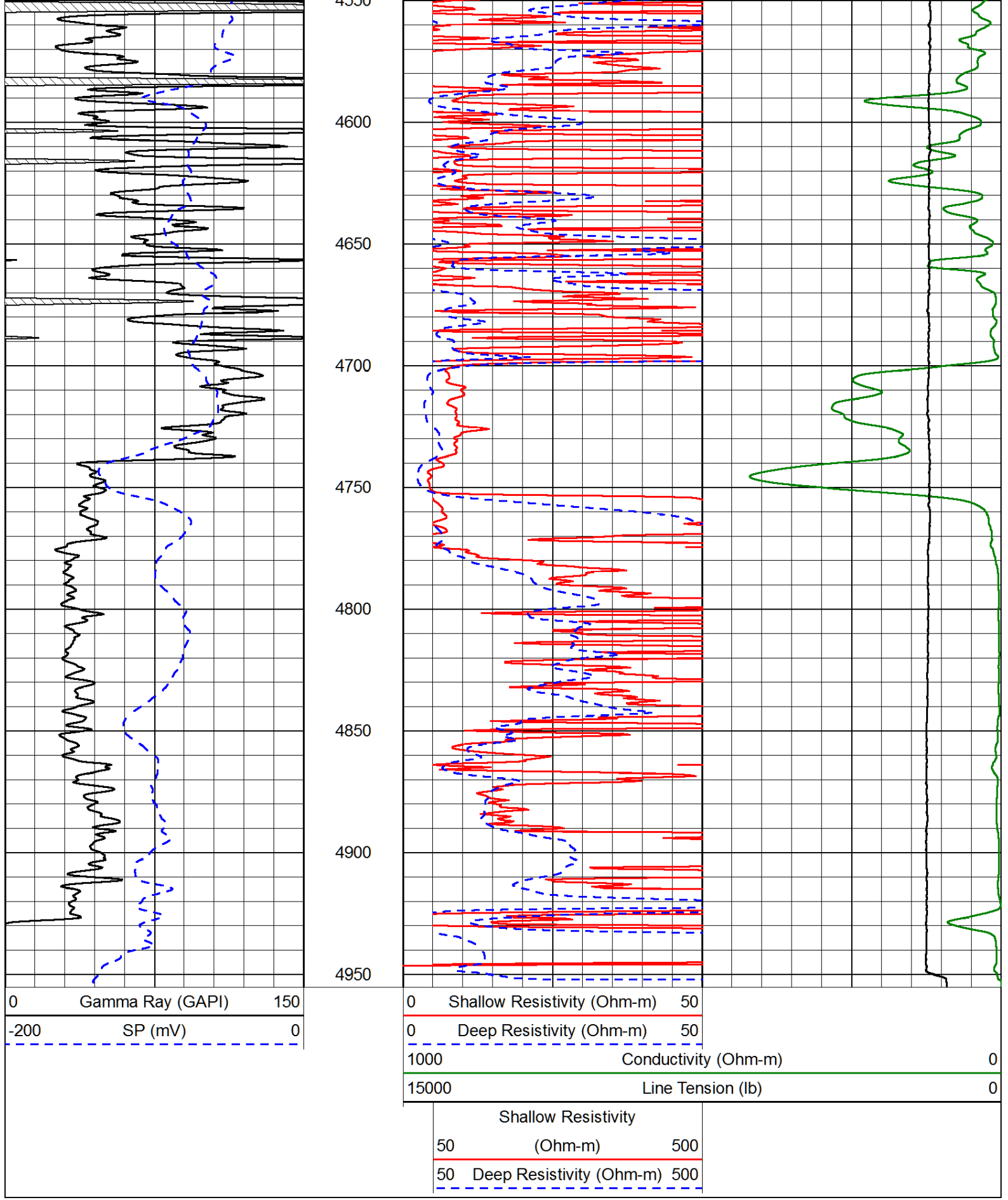










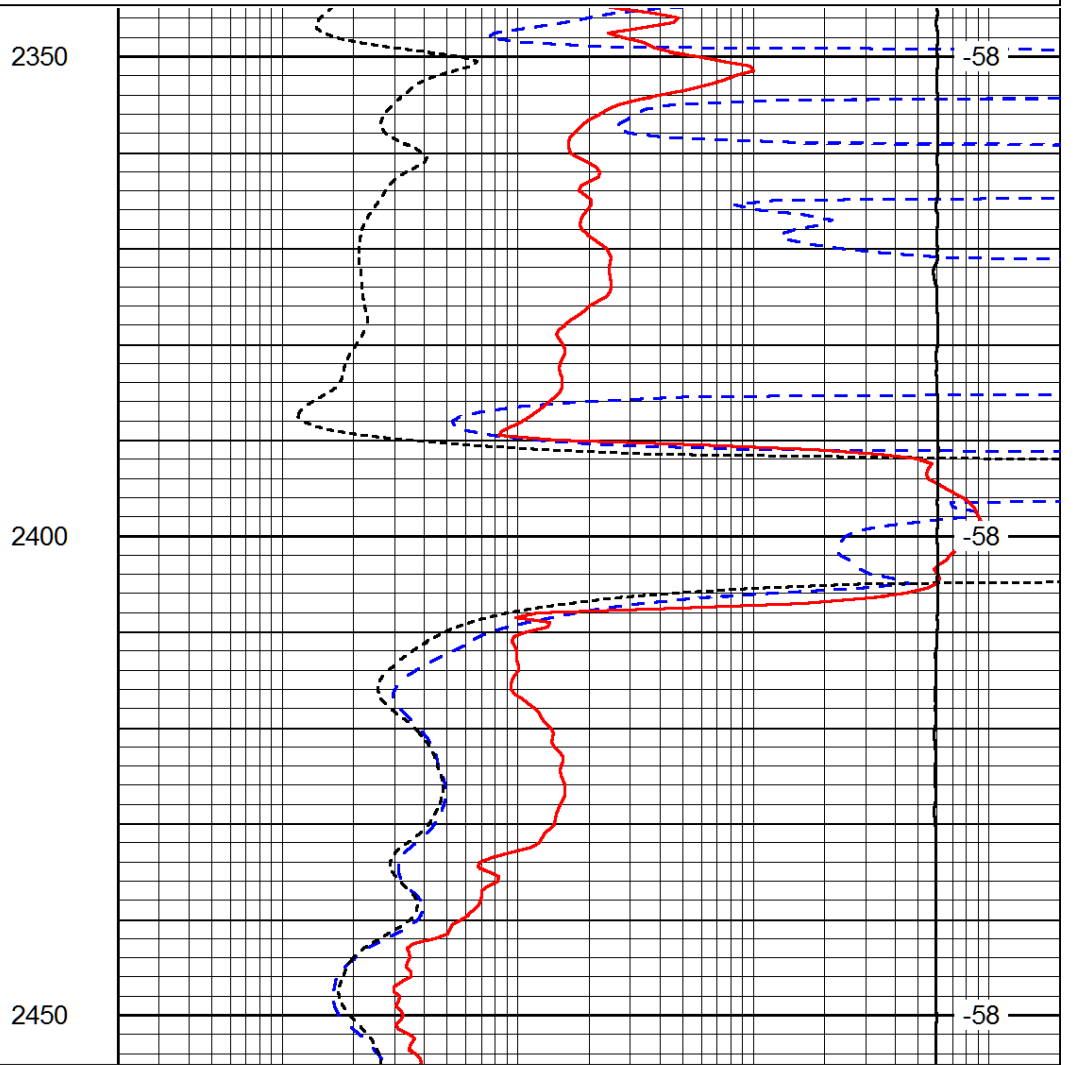
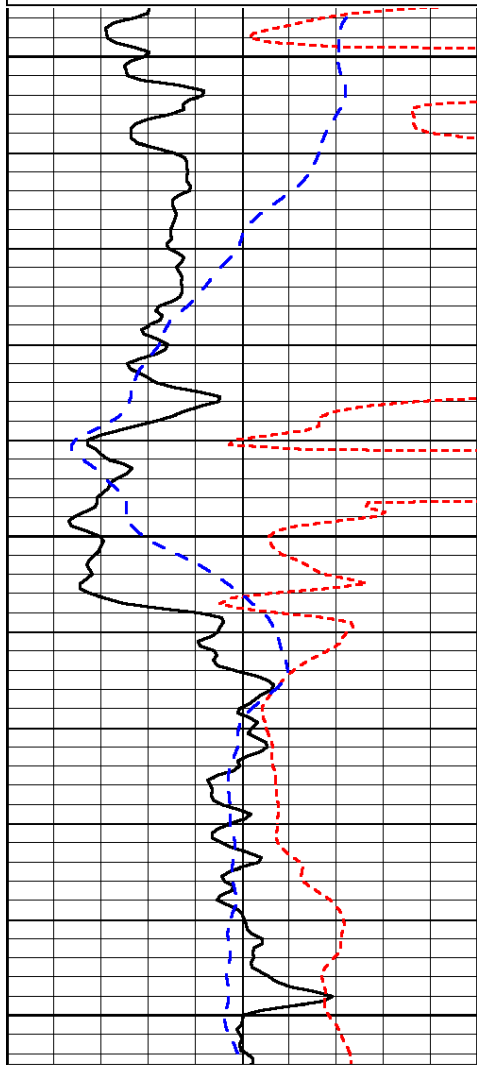


Database File: newgulf_captankirk_1hd.db
 Dataset Pathname: dil/newstck
 Presentation Format: dil
 Dataset Creation: Wed Mar 13 13:23:49 2013
 Charted by: Depth in Feet scaled 1:240

0	Gamma Ray (GAPI)	150
-160	RXO/RT	40
-200	SP (mV)	0

0.2	Deep Resistivity (Ohm-m)	2000
0.2	Medium Resistivity (Ohm-m)	2000
0.2	Shallow Resistivity (Ohm-m)	2000
10000	Line Tension (lb)	0

LSPD
(ft/min)



0	Gamma Ray (GAPI)	150
-160	RXO/RT	40
-200	SP (mV)	0

0.2	Deep Resistivity (Ohm-m)	2000
0.2	Medium Resistivity (Ohm-m)	2000
0.2	Shallow Resistivity (Ohm-m)	2000
10000	Line Tension (lb)	0

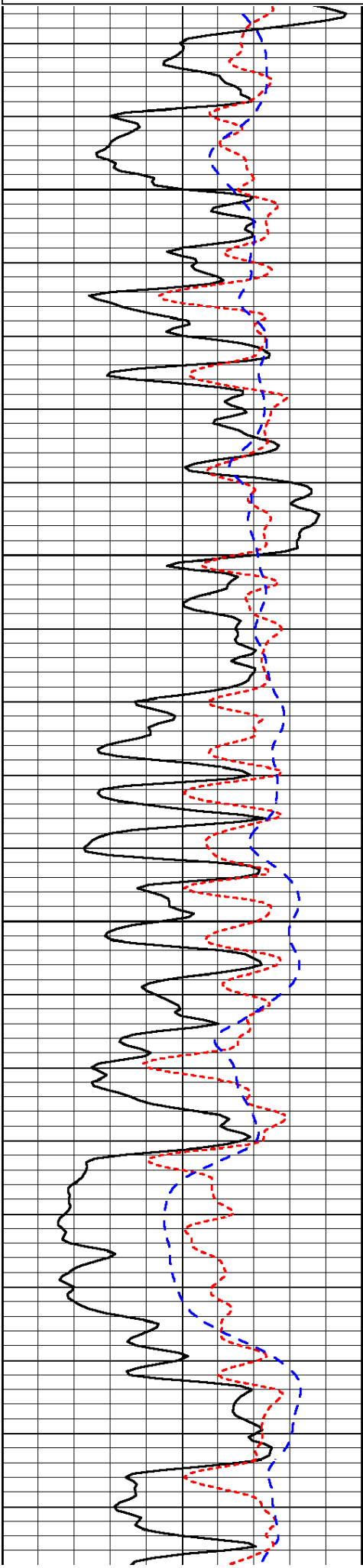
LSPD
(ft/min)

Database File: newgulf_captankirk_1hd.db
 Dataset Pathname: dil/newstck
 Presentation Format: dil
 Dataset Creation: Wed Mar 13 13:23:49 2013
 Charted by: Depth in Feet scaled 1:240

0	Gamma Ray (GAPI)	150
-160	RXO/RT	40
-200	SP (mV)	0

0.2	Deep Resistivity (Ohm-m)	2000
0.2	Medium Resistivity (Ohm-m)	2000
0.2	Shallow Resistivity (Ohm-m)	2000
10000	Line Tension (lb)	0

LSPD

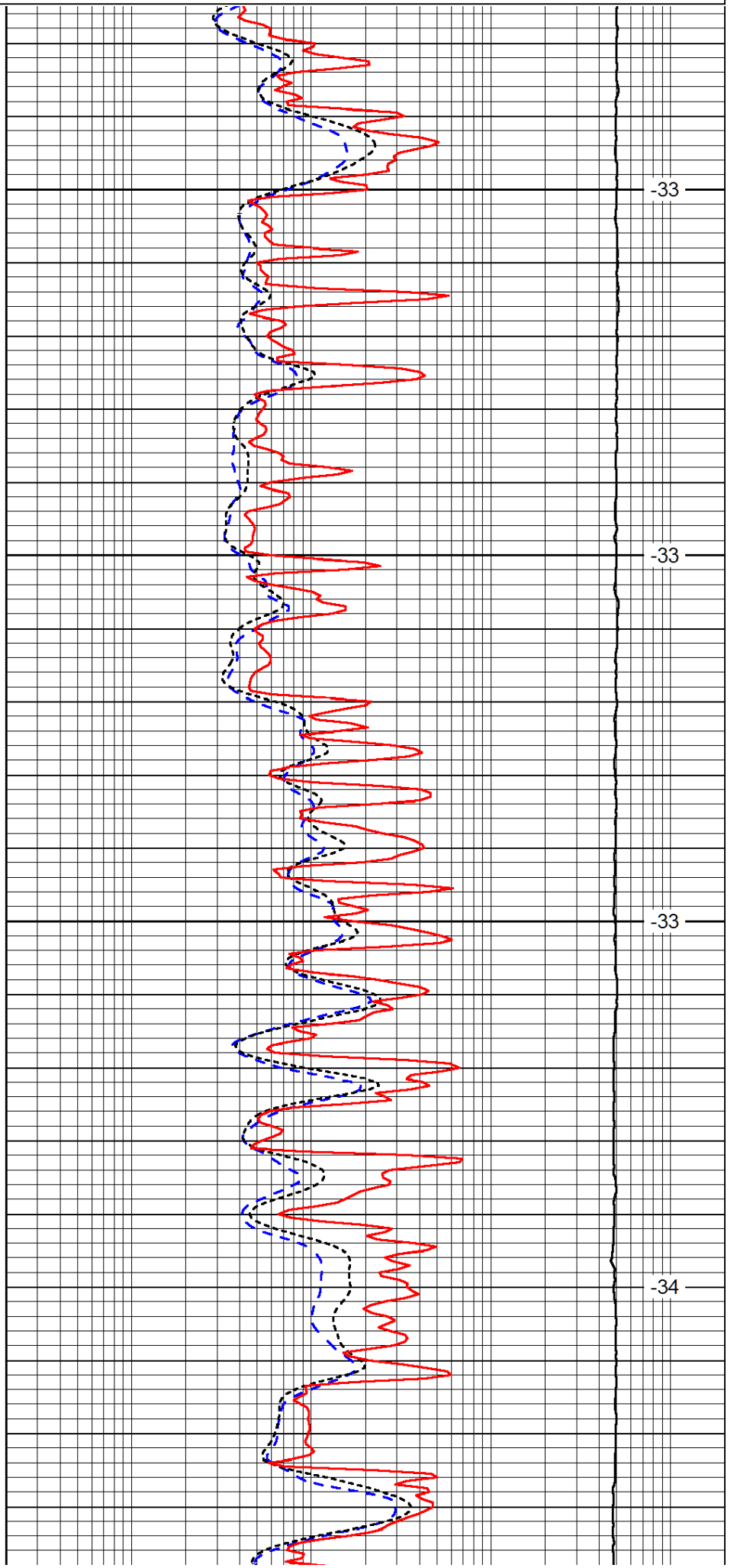


3500

3550

3600

3650

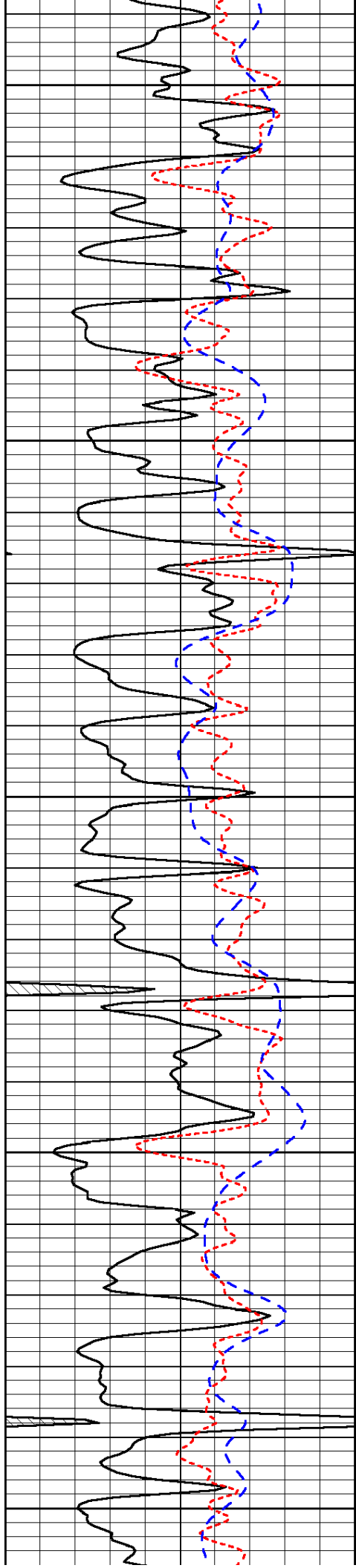


-33

-33

-33

-34



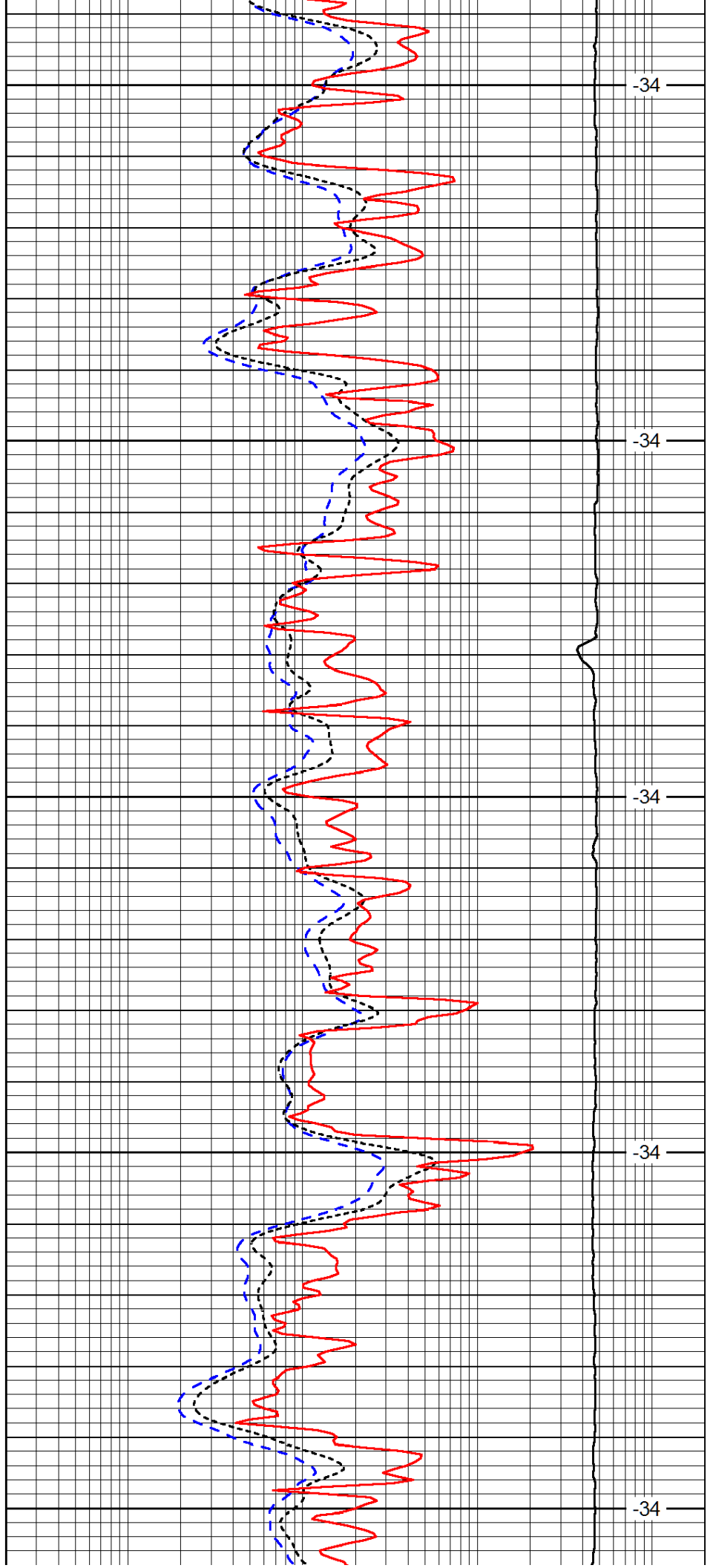
3700

3750

3800

3850

3900



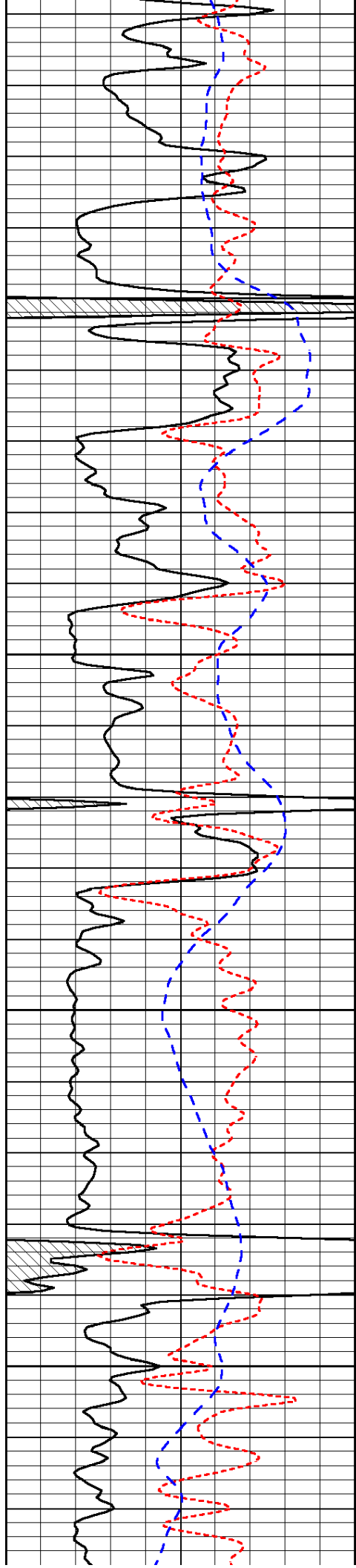
-34

-34

-34

-34

-34

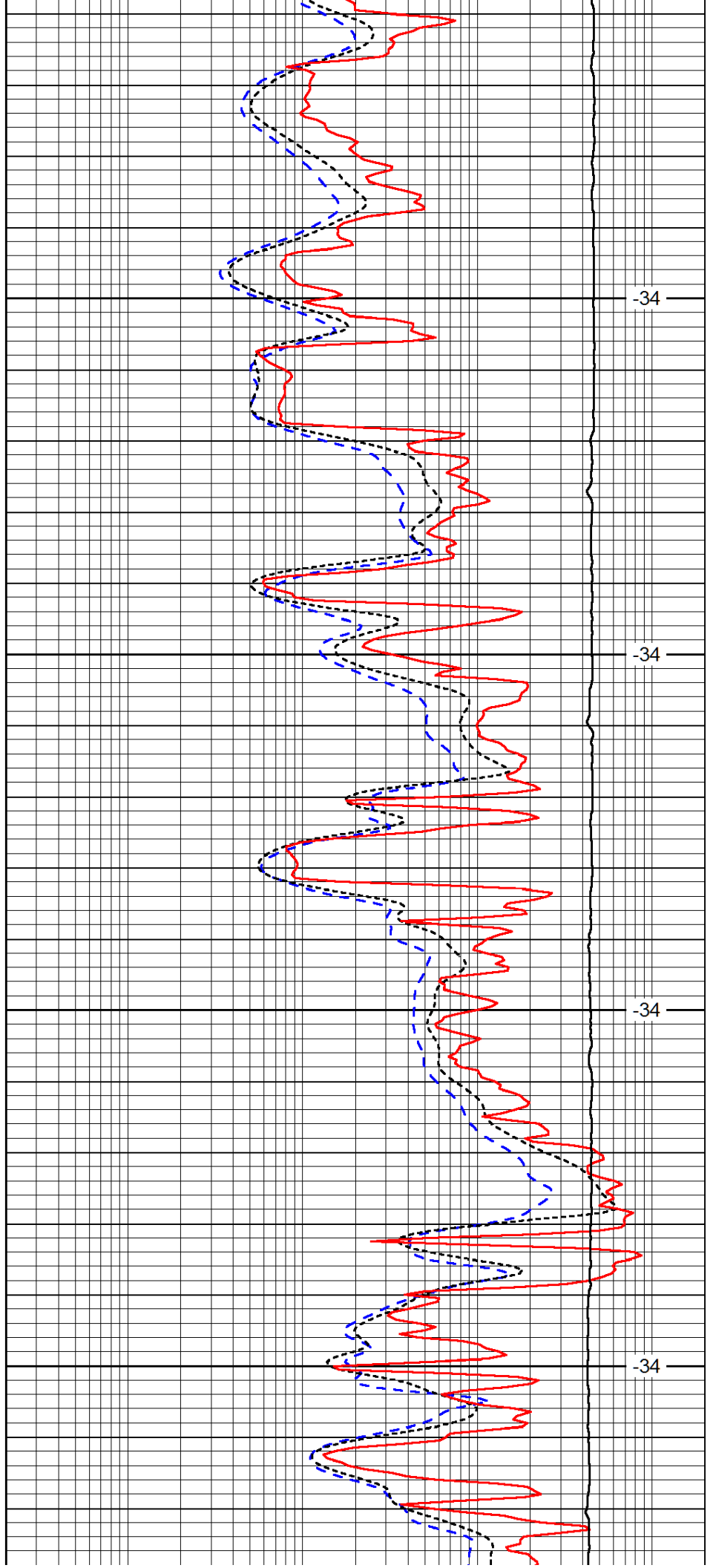


3950

4000

4050

4100

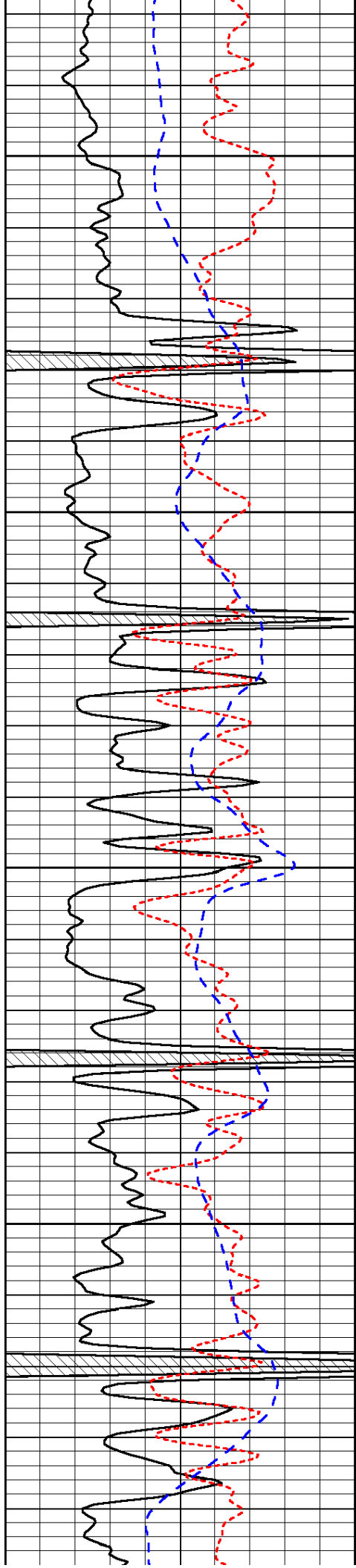


-34

-34

-34

-34

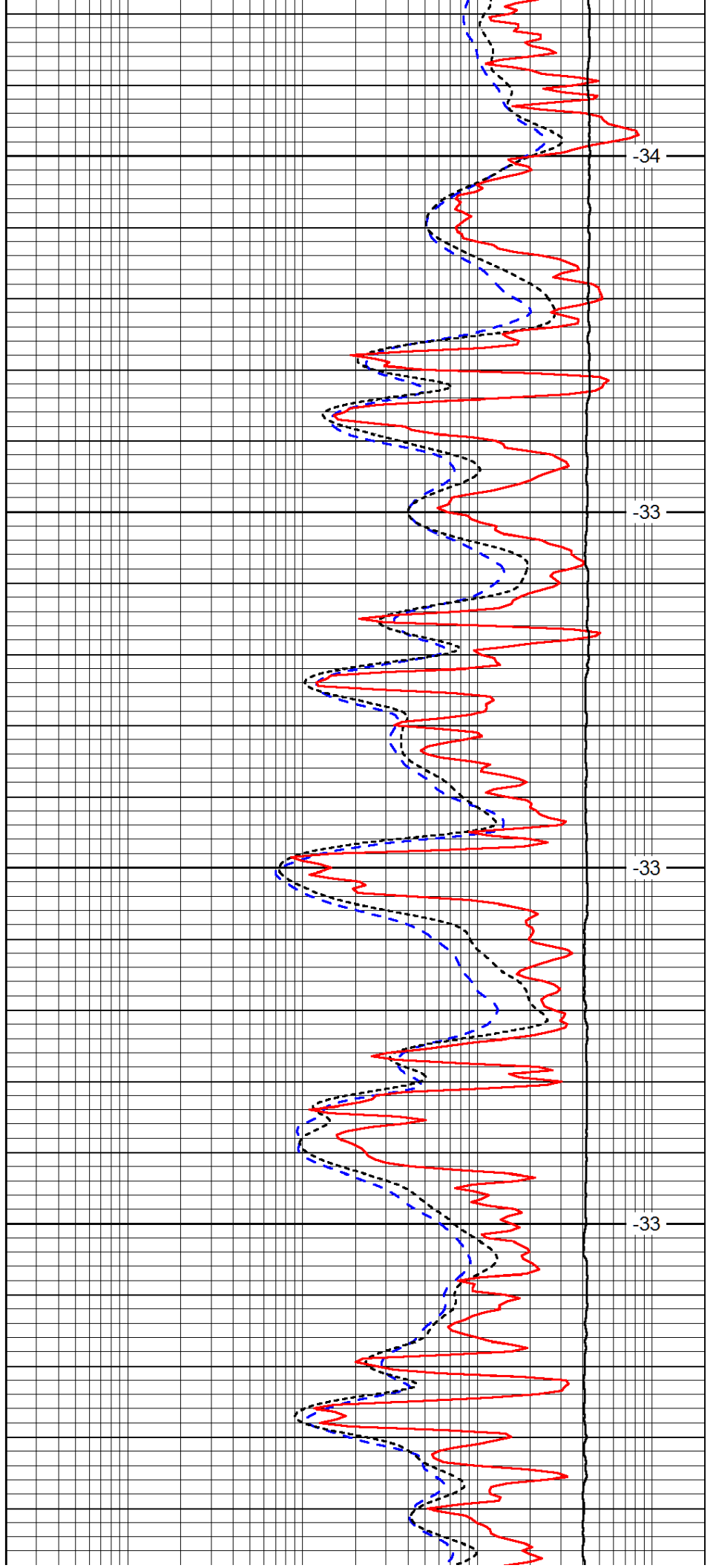


4150

4200

4250

4300

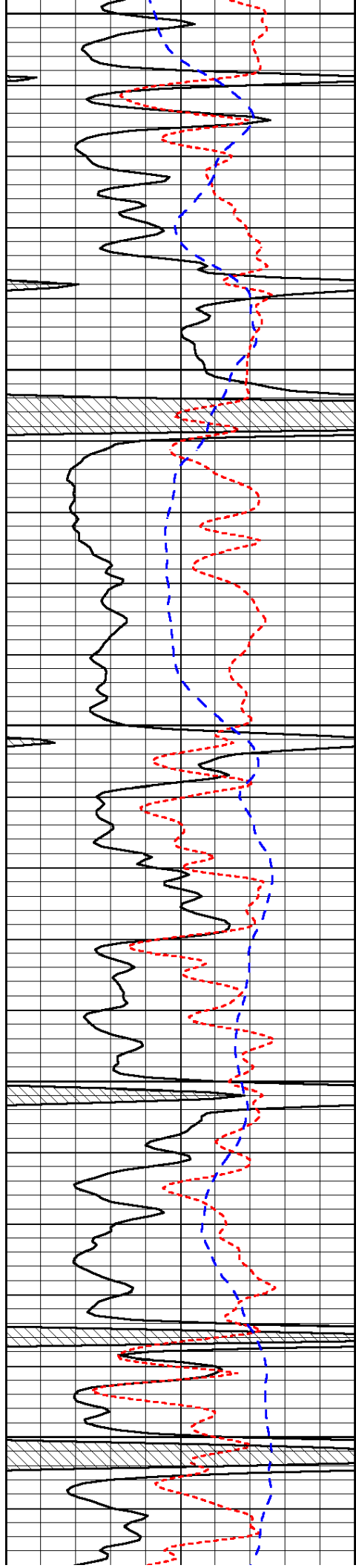


-34

-33

-33

-33



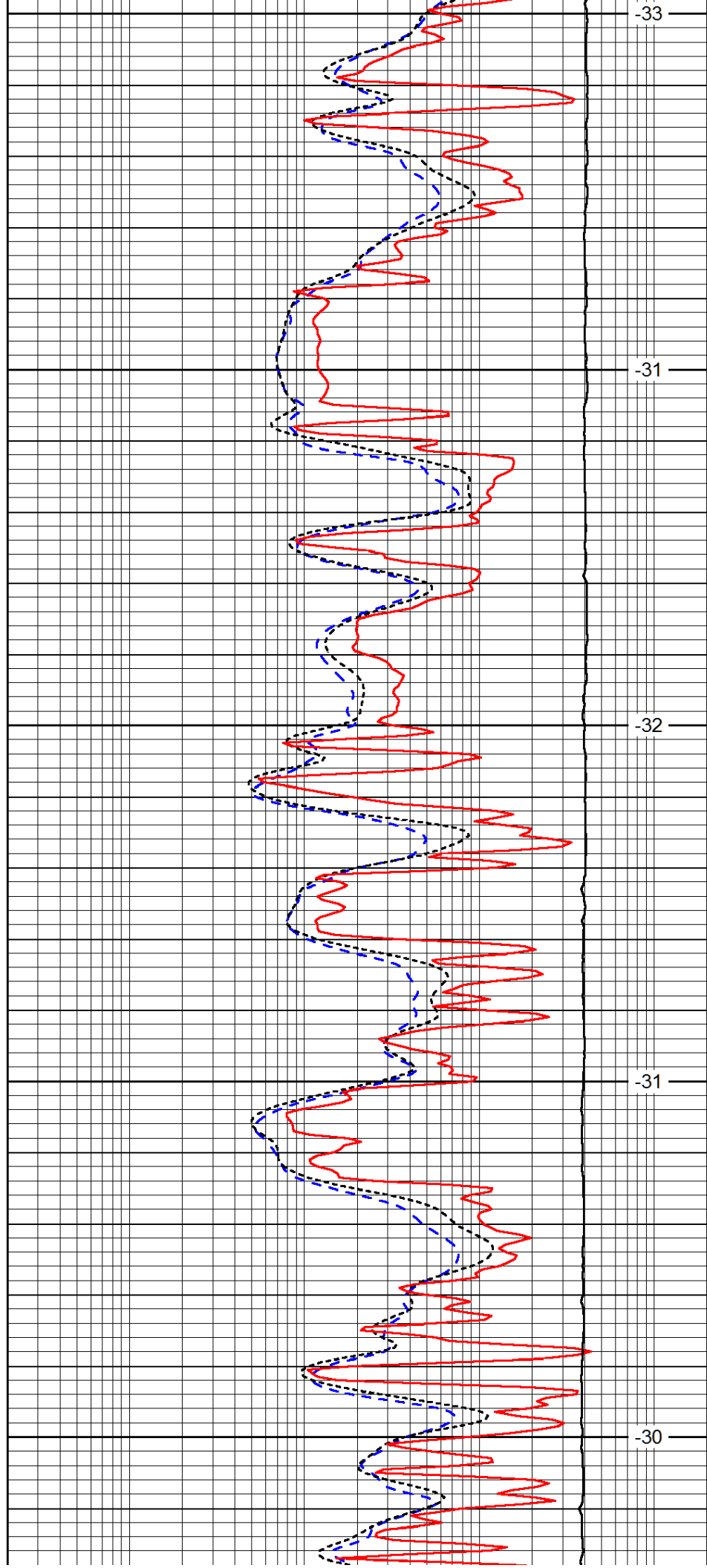
4350

4400

4450

4500

4550



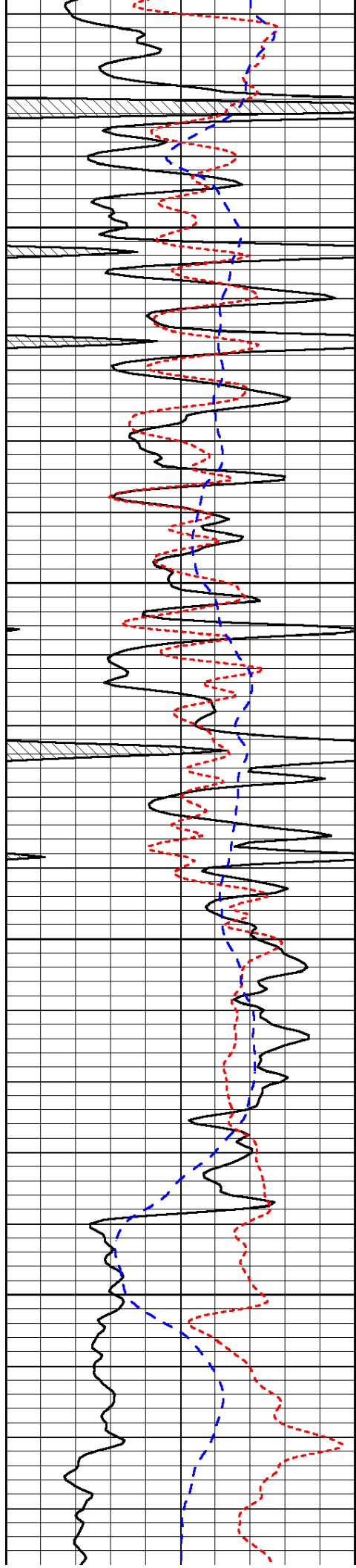
-33

-31

-32

-31

-30

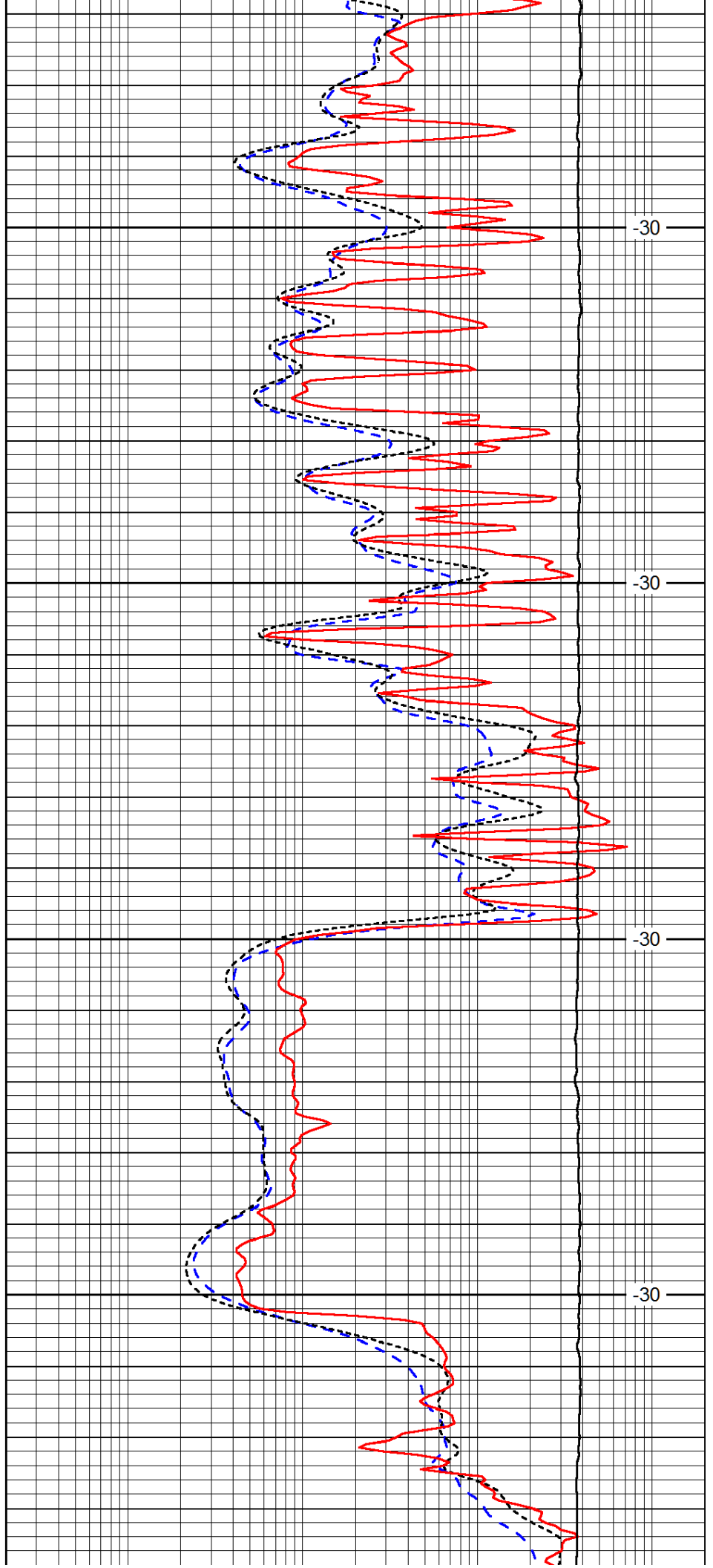


4600

4650

4700

4750

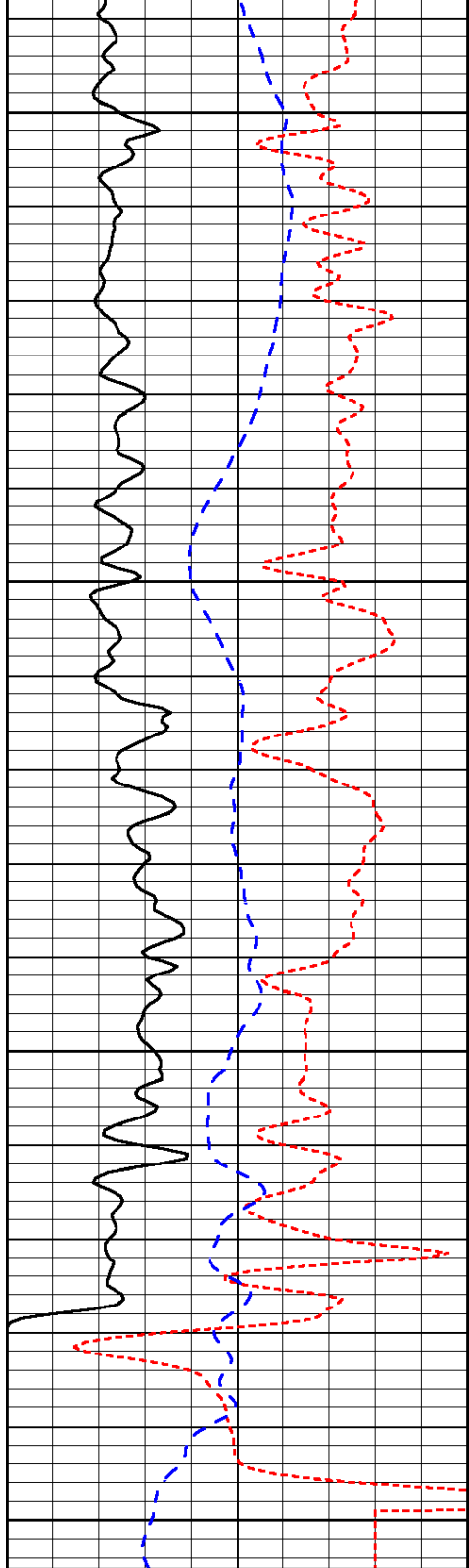


-30

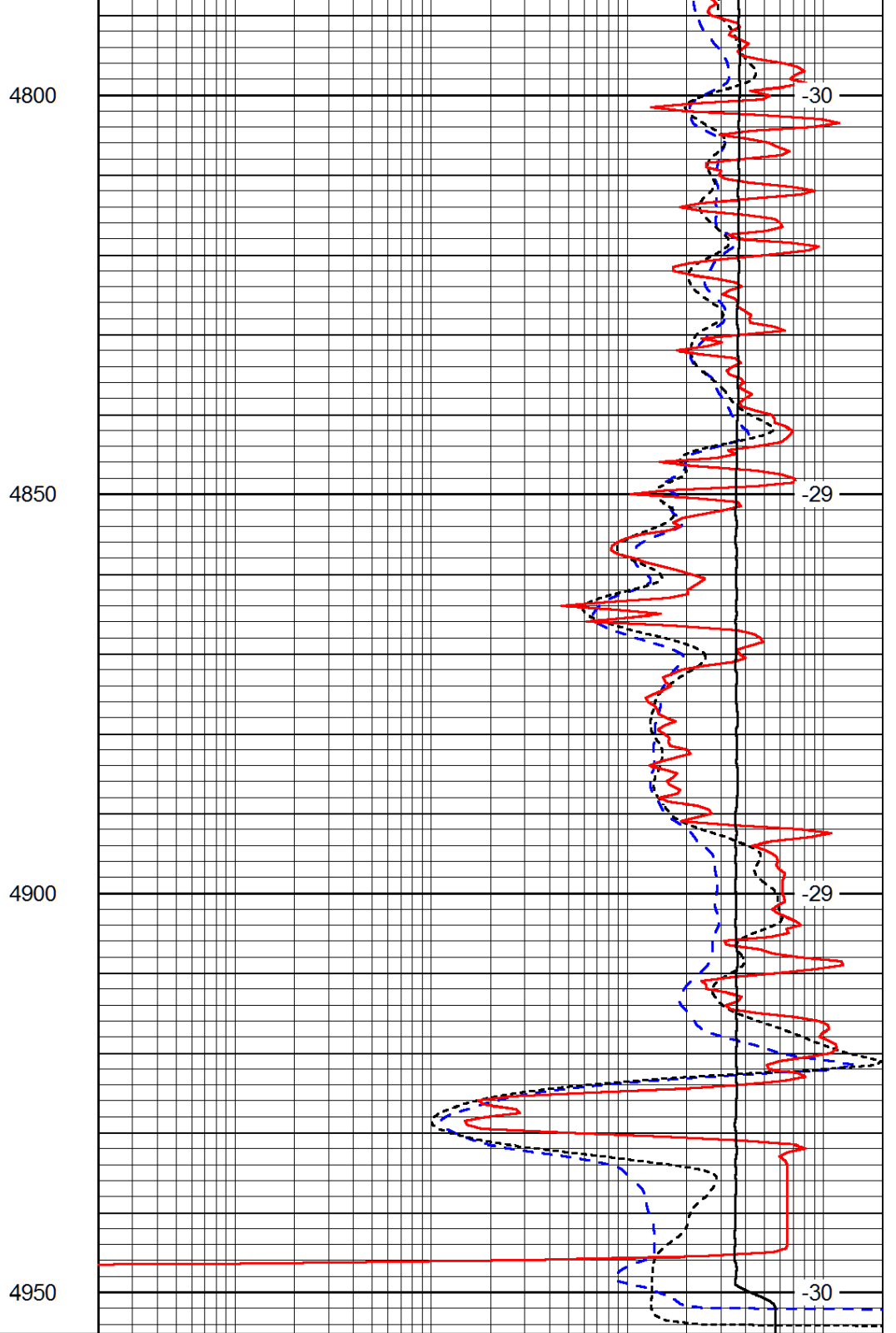
-30

-30

-30



0	Gamma Ray (GAPI)	150
-160	RXO/RT	40
-200	SP (mV)	0



0.2	Deep Resistivity (Ohm-m)	2000
0.2	Medium Resistivity (Ohm-m)	2000
0.2	Shallow Resistivity (Ohm-m)	2000
10000	Line Tension (lb)	0

LSPD
(ft/min)