



Pioneer Energy Services

Microresistivity Log

API No.

15-109-20,927-00-00

Company **New Gulf Operating, LLC**

Well **Captain Kirk No. 1**

Field **Scott** State **Kansas**

County **Scott** State **Kansas**

Location **388' FNL & 1,595' FEL**

Sec: **18** Twp: **17S** Rge: **33W**

Permanent Datum **Ground Level** Elevation **3070**

Log Measured From **Kelly Bushing** 9 Ft. Above Perm. Datum

Drilling Measured From **Kelly Bushing**

Other Services
CNL/CDL
DIL/BHCS

Elevation

K.B. 3079
D.F. 3070
G.L. 3070

Date **3/13/2013**

Run Number **Two**

Depth Driller **4950**

Depth Logger **4949**

Bottom Logged Interval **4948**

Top Log Interval **3475**

Casing Driller **8.625 @ 264**

Casing Logger **266**

Bit Size **7.875**

Type Fluid in Hole **Chemical**

Salinity, ppm CL **6800**

Density / Viscosity **9.4 | 59**

pH / Fluid Loss **10.5 | 6.8**

Source of Sample **Flowline**

Rm @ Meas. Temp **.36 @ 72**

Rmf @ Meas. Temp **.27 @ 72**

Rmc @ Meas. Temp **.49 @ 72**

Source of Rmf / Rmc **Charts**

Rm @ BHT **.21 @ 126**

Operating Rig Time **5 Hours**

Max Rec. Temp. F **126**

Equipment Number **108**

Location **Hays**

Recorded By **J. Long**

Witnessed By **Curtis Covey**

Danny Birdwell

Jim Henkle

<<< Fold Here >>>

All interpretations are opinions based on inferences from electrical or other measurements and we cannot and do not guarantee the accuracy or correctness of any interpretation, and we shall not, except in the case of gross or willful negligence on our part, be liable or responsible for any loss, costs, damages, or expenses incurred or sustained by anyone resulting from any interpretation made by any of our officers, agents or employees. These interpretations are also subject to our general terms and conditions set out in our current Price Schedule.

Comments

Thank you for using Log-Tech, Inc.
(785) 625-3858

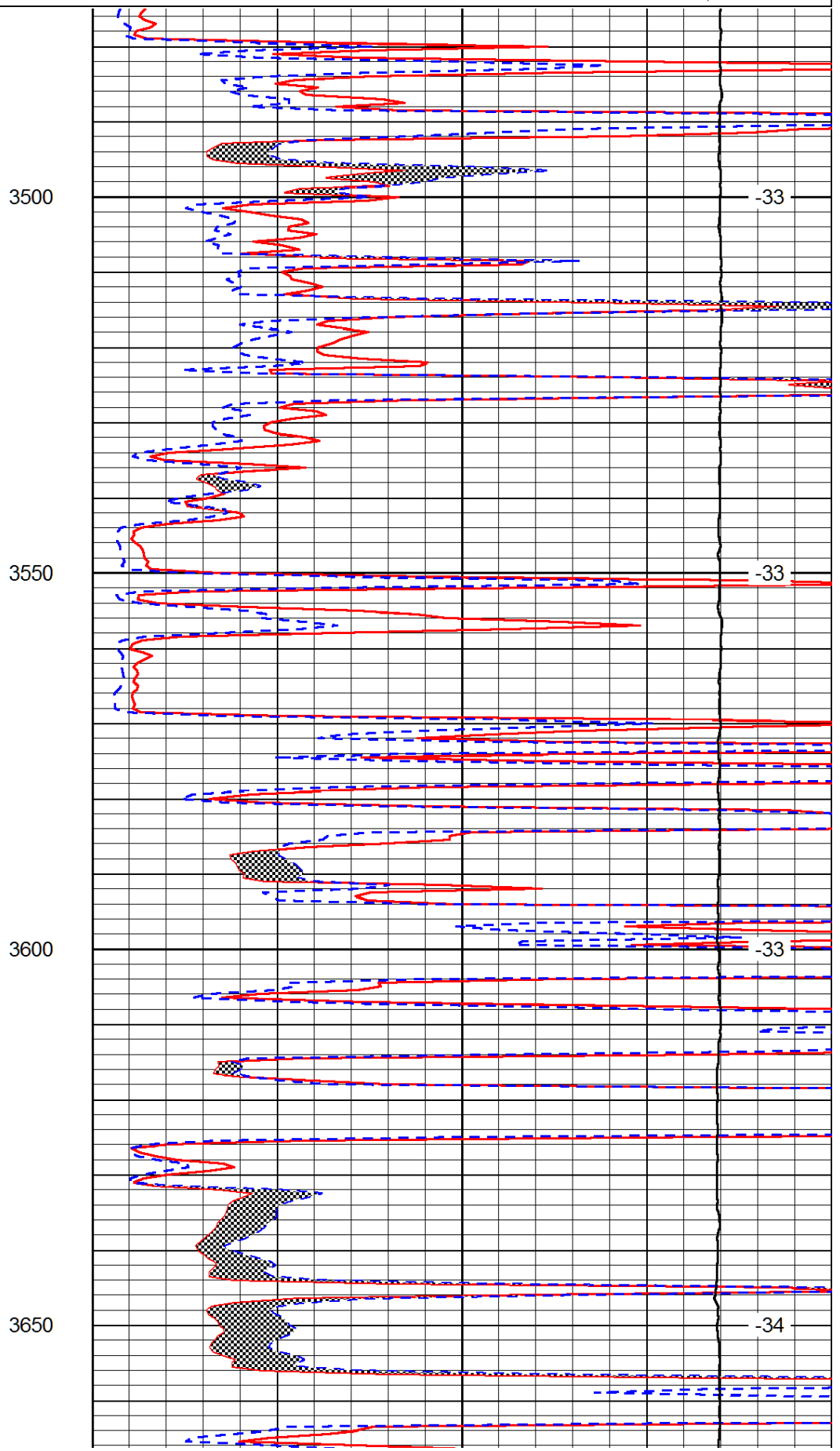
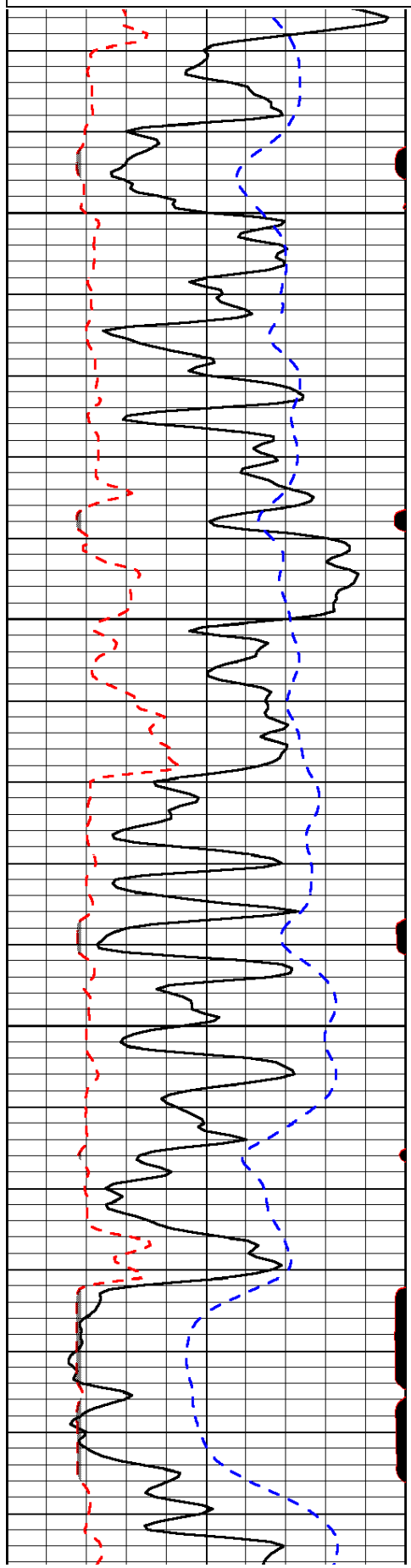
Scott City, 8 North to Highway 4 & Highway 83 Intersection, 6 West, 1 South, East Into

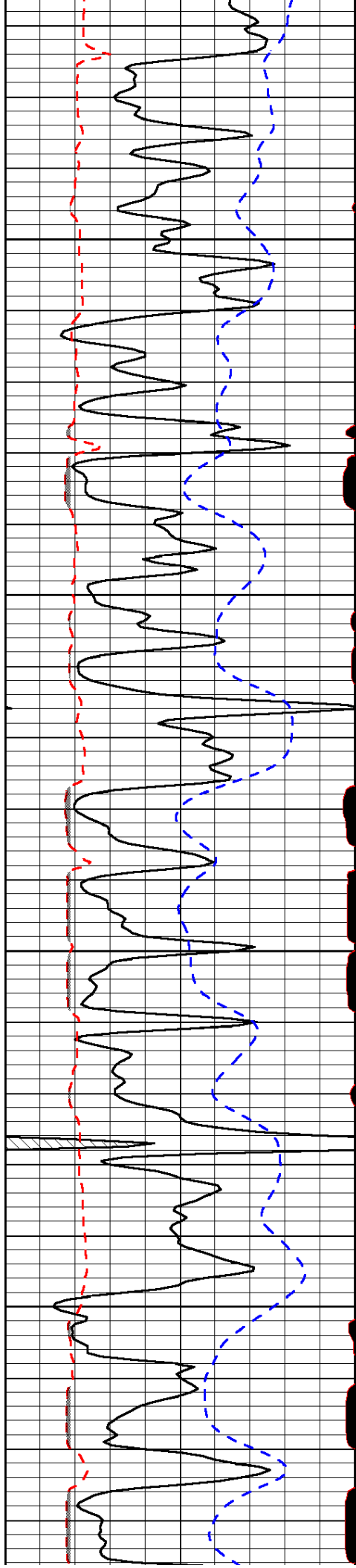
Database File: newgulf_captankirk_1hd.db
Dataset Pathname: dil/newstck
Presentation Format: micro
Dataset Creation: Wed Mar 13 13:23:49 2013
Charted by: Depth in Feet scaled 1:240

0	Gamma Ray (GAPI)	150
6	MCAL (in)	16
2.875	Mud Cake (in)	7.875
-200	SP (mV)	0

0	Micro Inverse 1 X 1 (Ohm-m)	40
0	Micro Normal 2" (Ohm-m)	40
10000	Line Weight (lb)	0

LSPD
(ft/min)



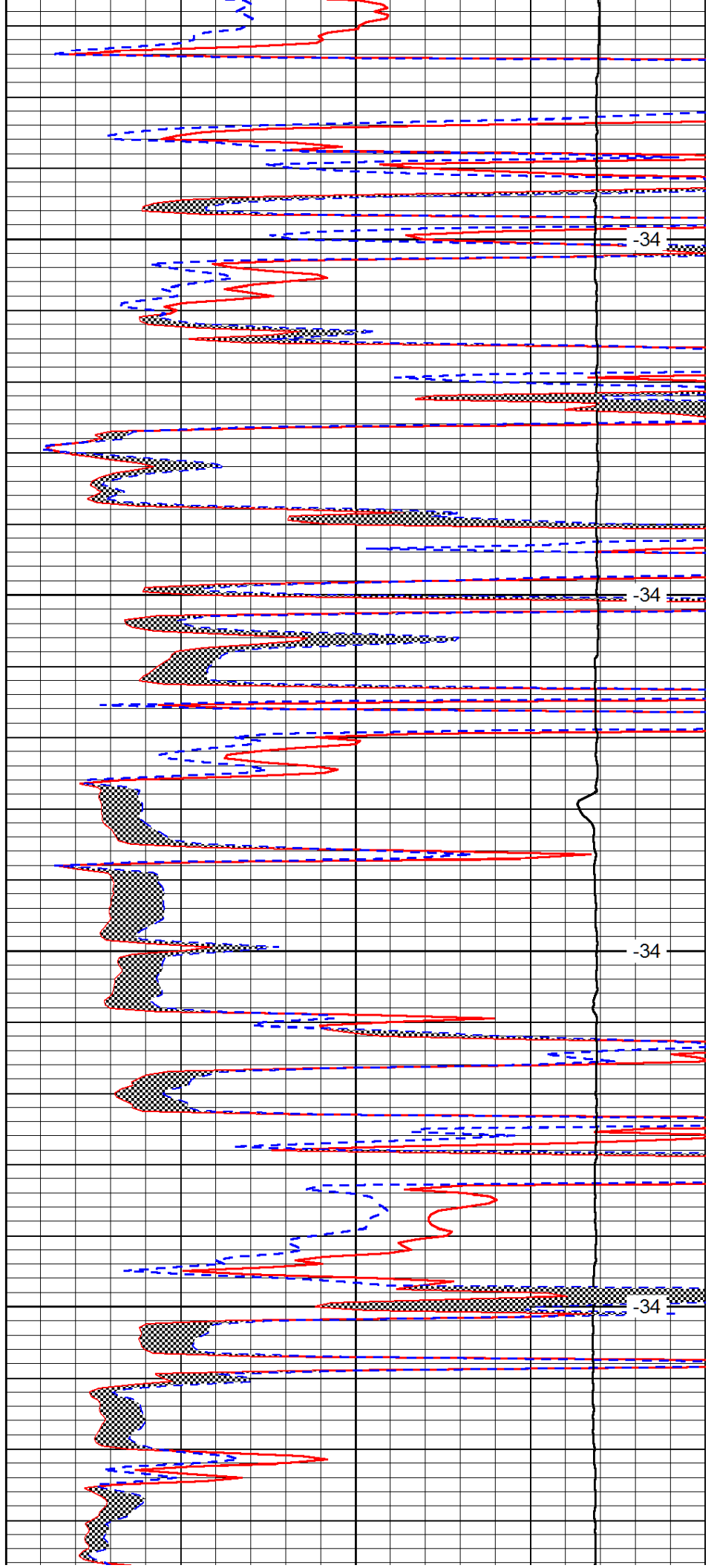


3700

3750

3800

3850

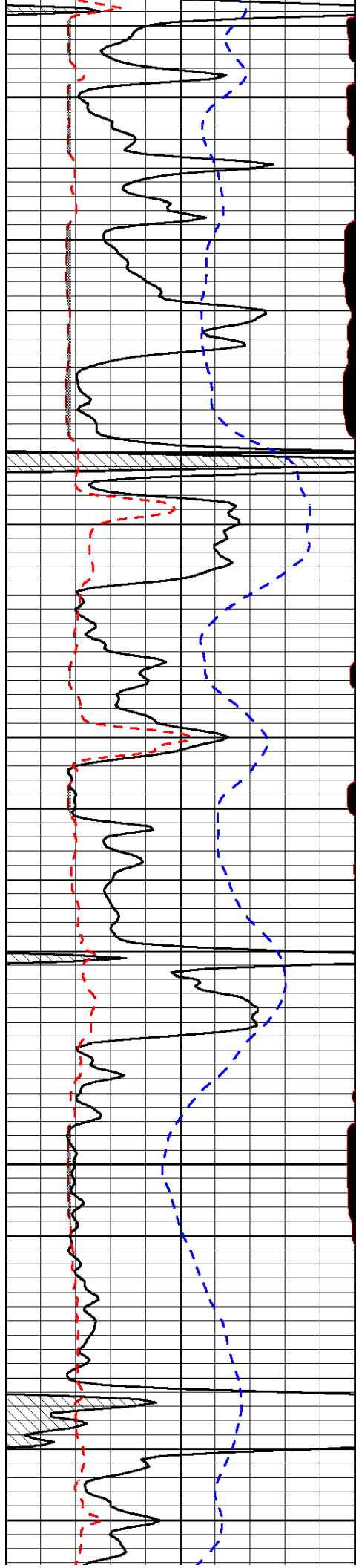


-34

-34

-34

-34



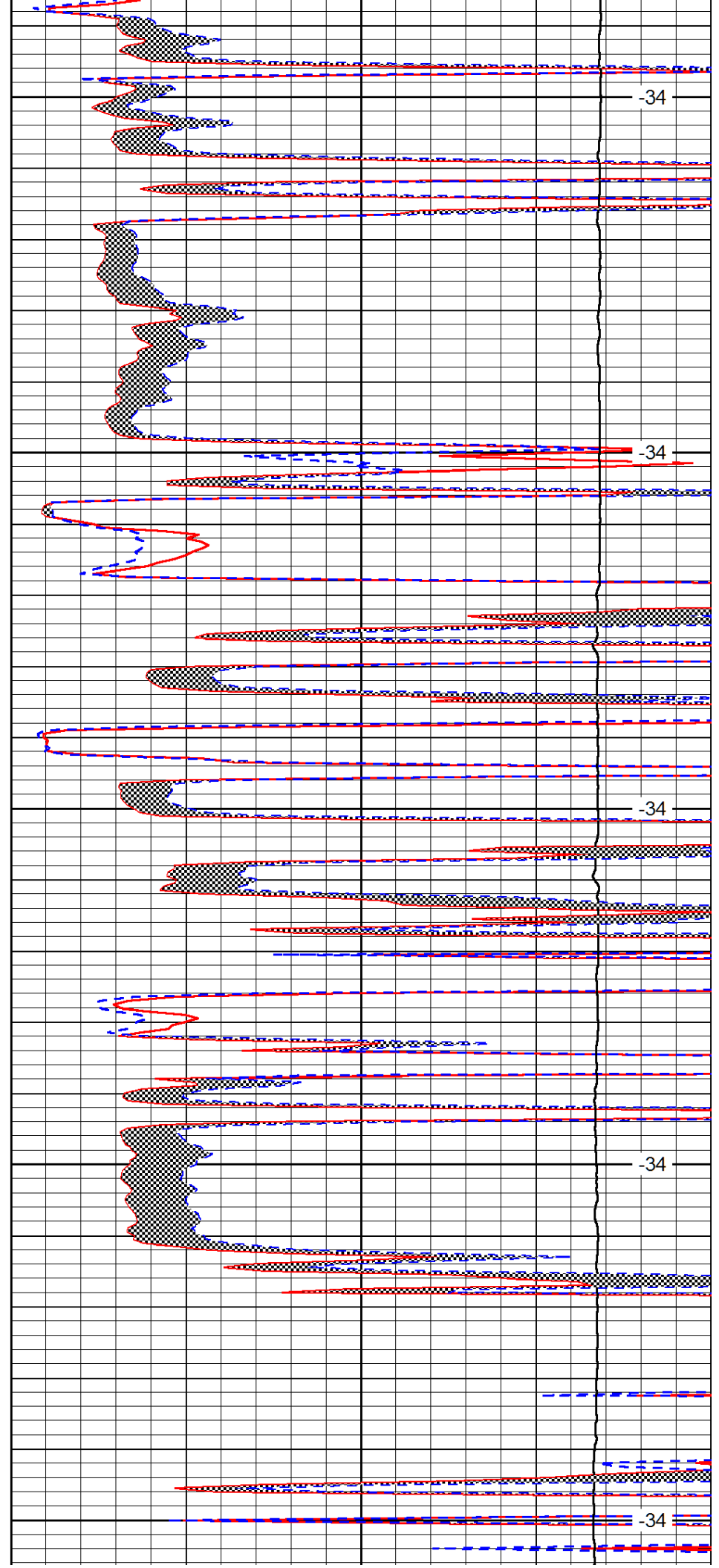
3900

3950

4000

4050

4100



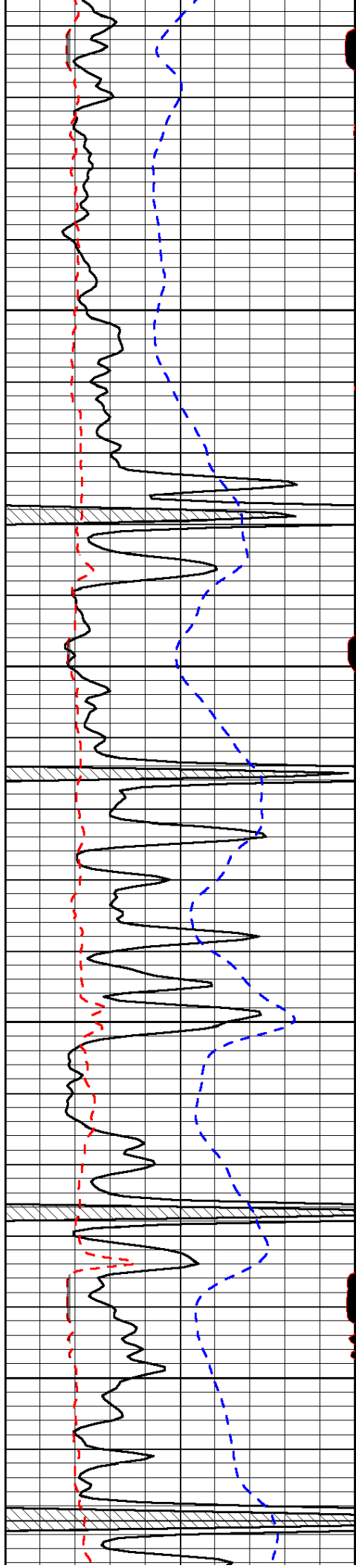
-34

-34

-34

-34

-34

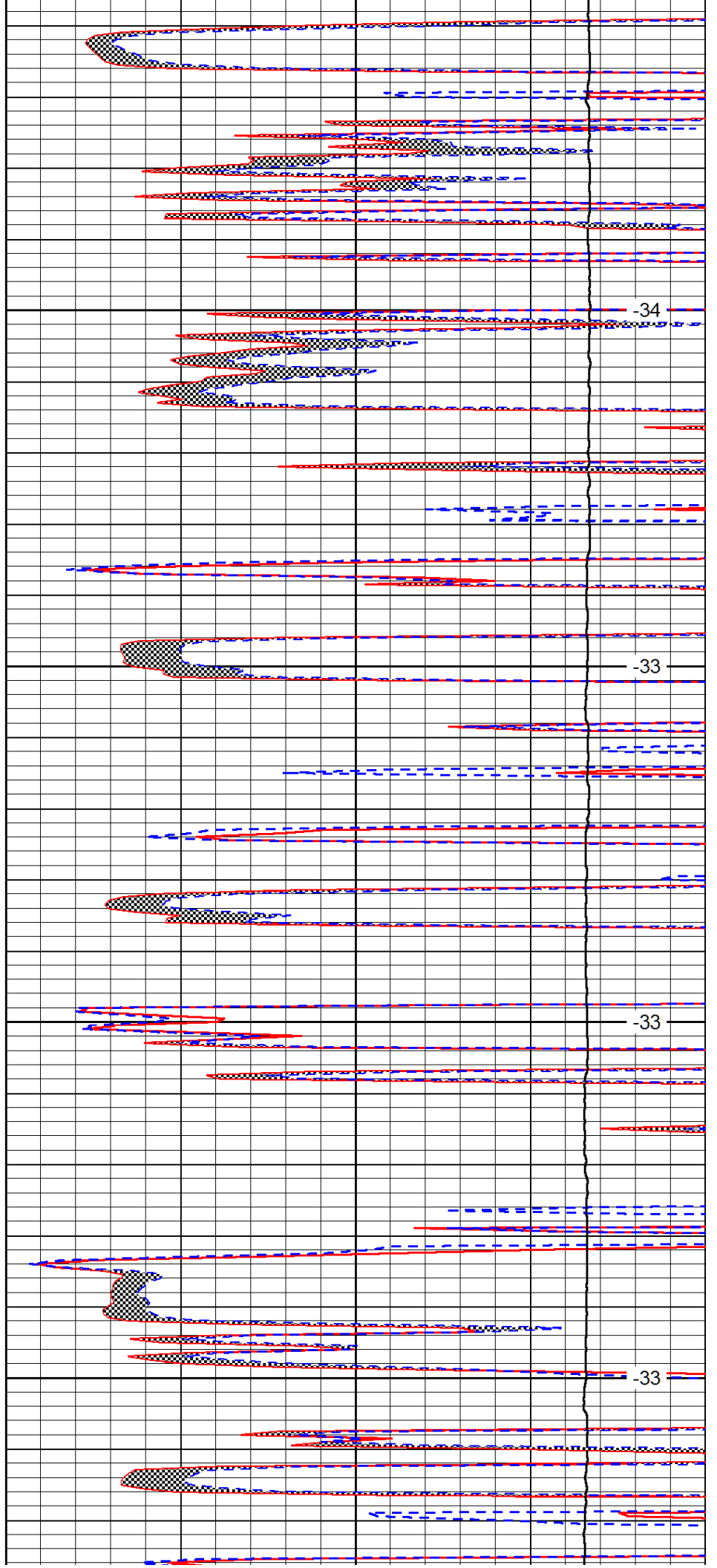


4150

4200

4250

4300

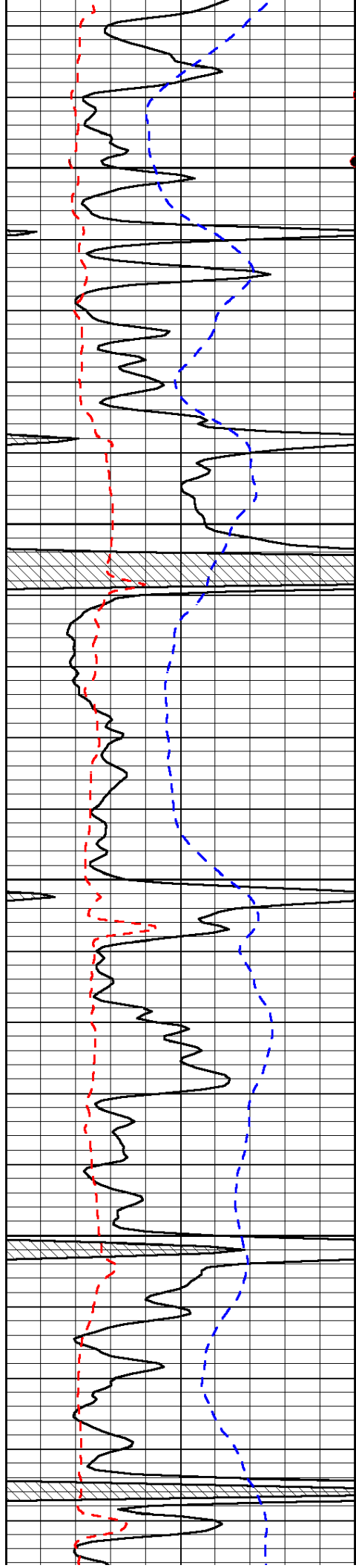


-34

-33

-33

-33

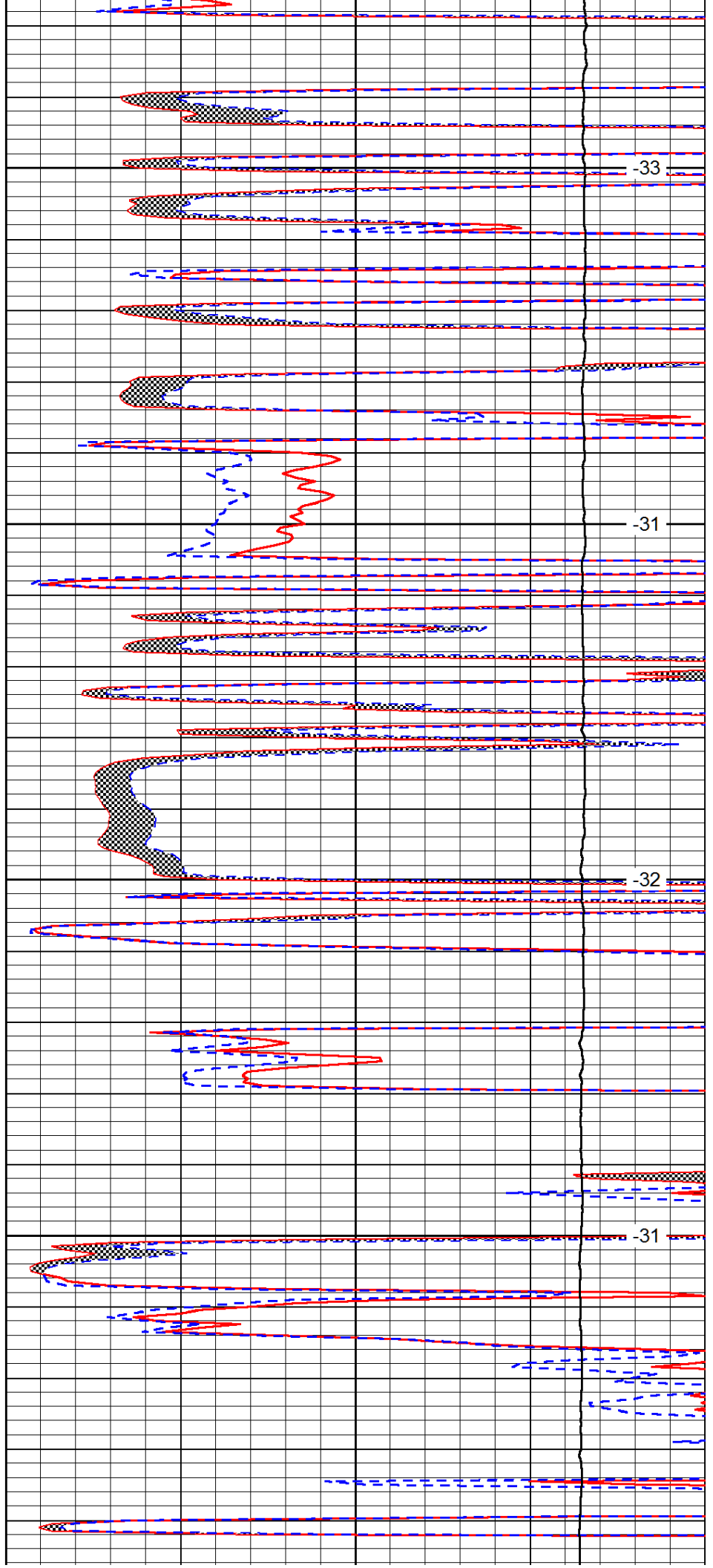


4350

4400

4450

4500

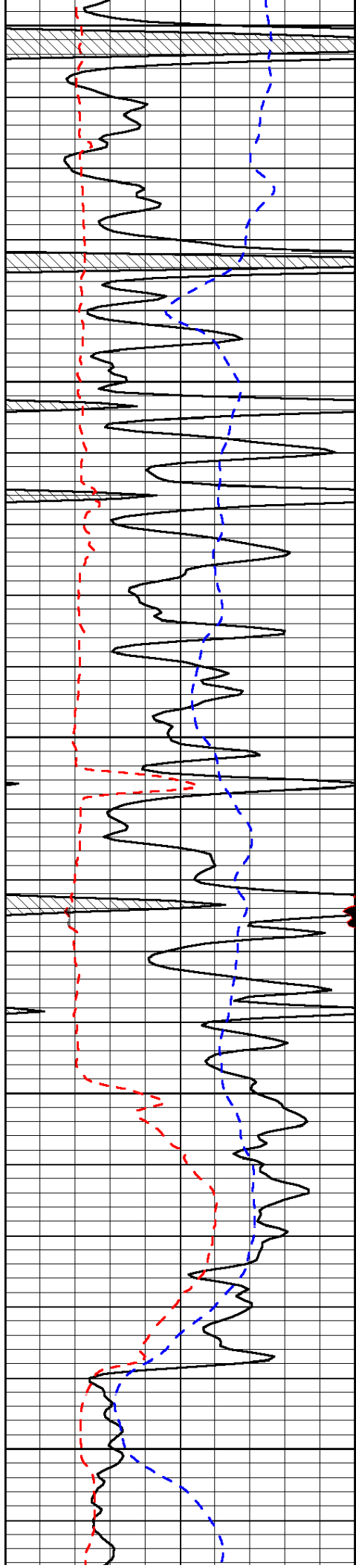


-33

-31

-32

-31



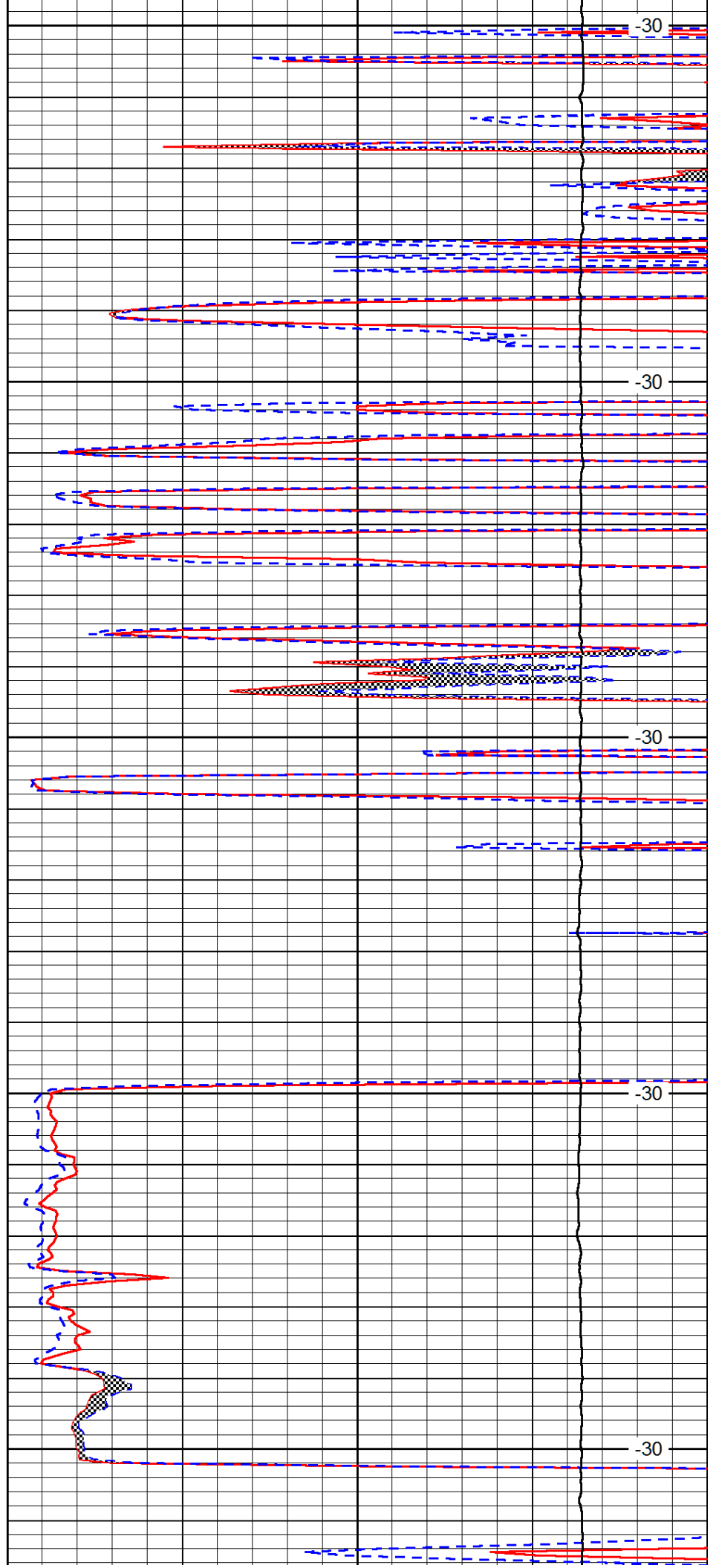
4550

4600

4650

4700

4750



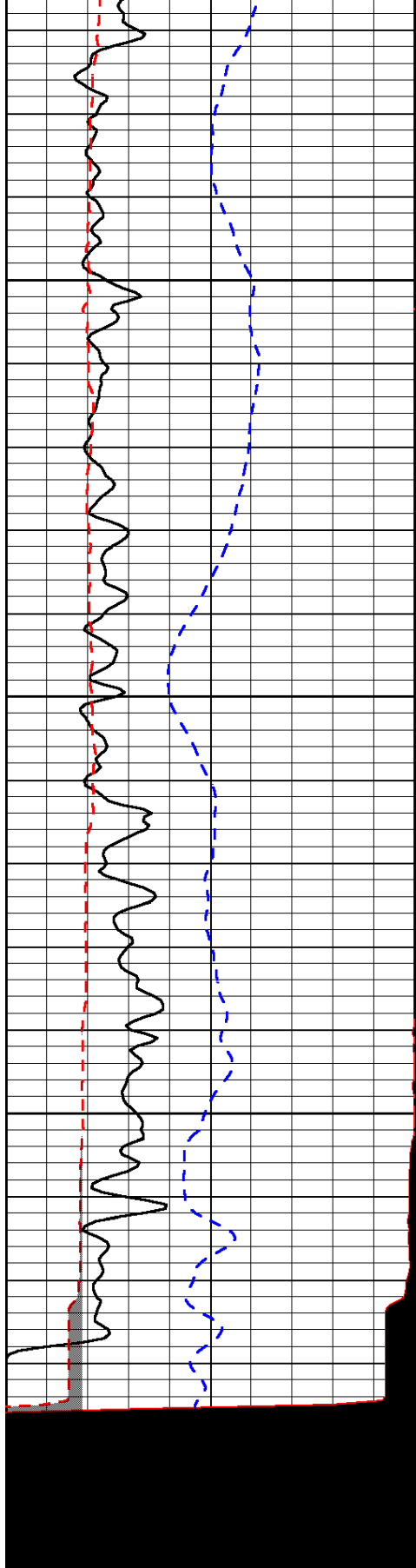
-30

-30

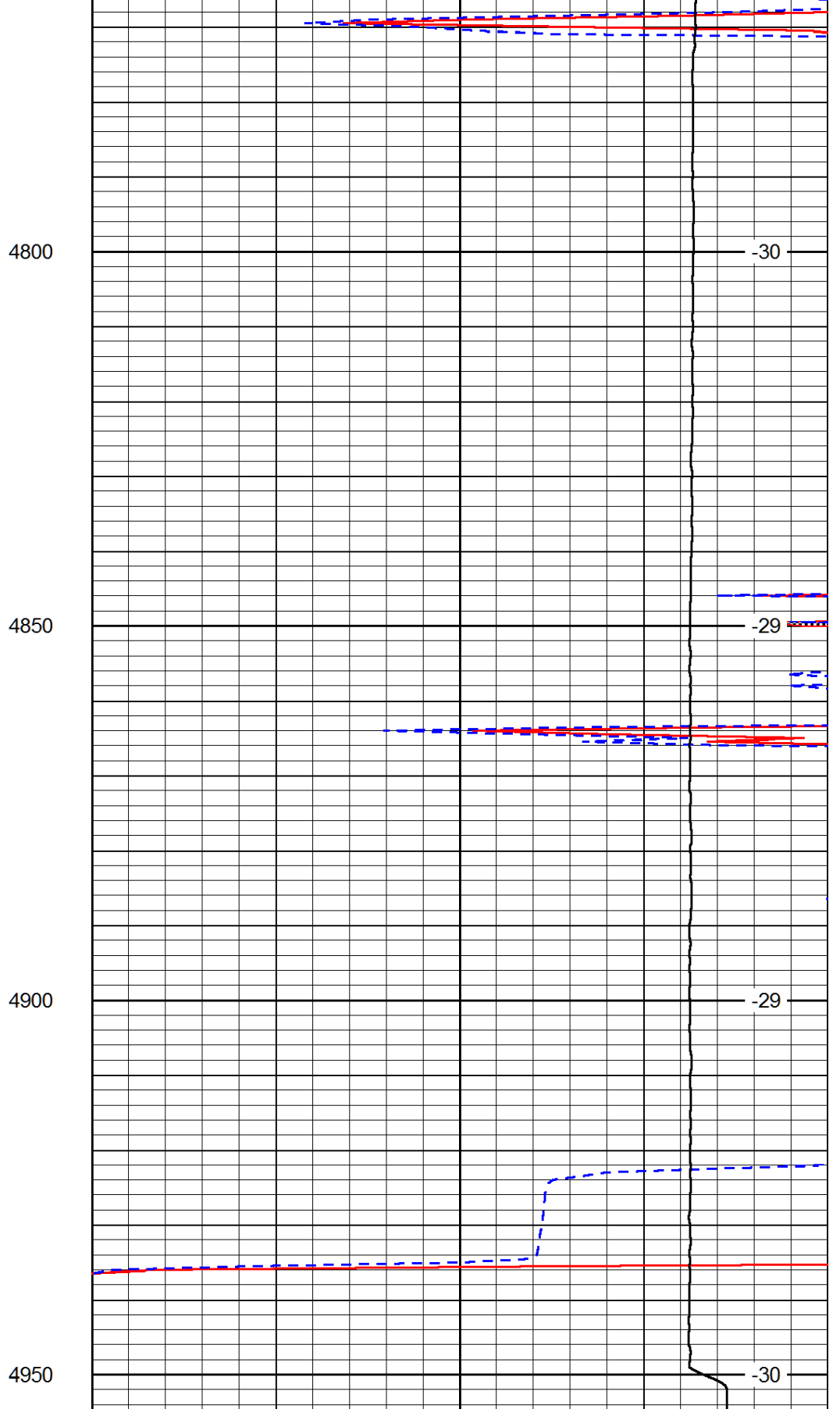
-30

-30

-30



0	Gamma Ray (GAPI)	150
6	MCAL (in)	16
2.875	Mud Cake (in)	7.875
-200	SP (mV)	0



0	Micro Inverse 1 X 1 (Ohm-m)	40
0	Micro Normal 2" (Ohm-m)	40
10000	Line Weight (lb)	0

LSPD
(ft/min)