



Pioneer Energy Services

Sector Bond / Gamma Ray
CCL Log

15-109-20927-00-00

Company New Gulf Operating LLC

Well Captain Kirk No.1

Field

County Scott

State Kansas

Location

388' FNL & 1595' FEL

Other Services

Sec: 18 Twp: 17 S Rge: 33 W

Elevation

Permanent Datum Ground Level Elevation 3070

Log Measured From Kelly Bushing 9 Ft. Above Perm. Datum

Drilling Measured From Kelly Bushing K.B. 3079
D.F. 3070
G.L. 3070

Run Number One

Date Survey 03/19/2013

Date Cementing 03/13/2013

Type Cementing Operation Primary

Depth Driller 4950

Depth Logger 4878

Logged Interval 4877 to 3050

Casing Driller 5.5 @ TD @

Float Collar -- D.V. Tool 2369 @

Squeeze Depth

Amount & Type Cement

Amount & Type Admix

Type Fluid In Hole Water

Fluid Level 500

Salinity PPM CL

Weight lb/gal -- Vis. // // //

Approx. Logged Cement Top 3213

Calculated Cement Top

Max. Hole Temperature 126

Tool No. RBT 71

Spacing Recorded 3-5

Equipment -- Location 71 Hays

Recorded By Scott Clemont

Witnessed By Jim Henkle

<<< Fold Here >>>

All interpretations are opinions based on inferences from electrical or other measurements and we cannot and do not guarantee the accuracy or correctness of any interpretation, and we shall not, except in the case of gross or willful negligence on our part, be liable or responsible for any loss, costs, damages, or expenses incurred or sustained by anyone resulting from any interpretation made by any of our officers, agents or employees. These interpretations are also subject to our general terms and conditions set out in our current Price Schedule.

Comments

Thank you for using Pioneer Energy Services
785-625-3858

Hwy 83 & 4 Junction, 6 West
1 South, East Into

Database File: newgulf_capkirk_#1.db
Dataset Pathname: sgrcbl/pass5
Presentation Format: scbl02
Dataset Creation: Tue Mar 19 14:45:11 2013 by Log SCH 111116
Charted by: Depth in Feet scaled 1:240

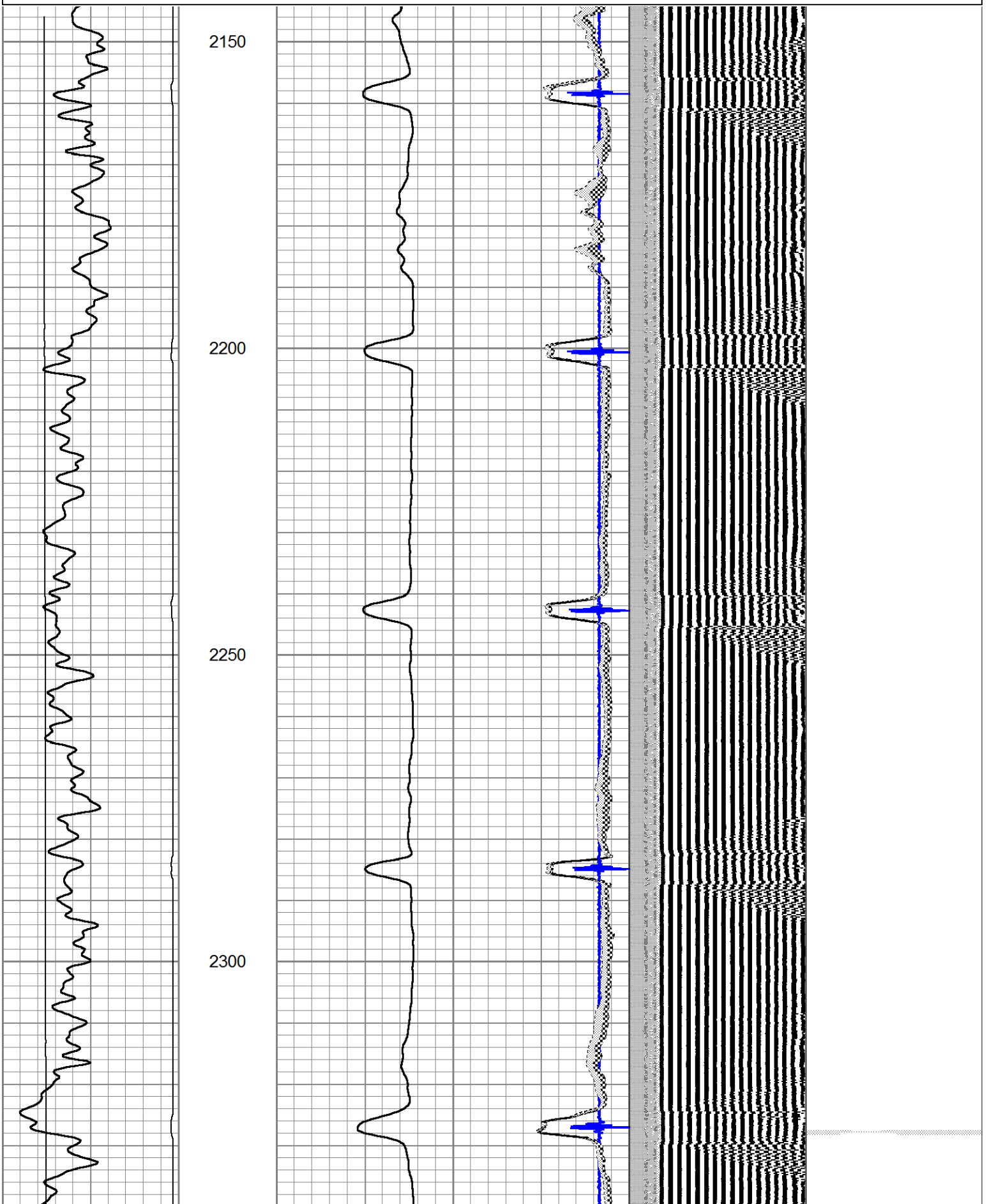
0	GR	150
0	LTEN (lb)	3000
TT3FT		
1200	(usec)	254

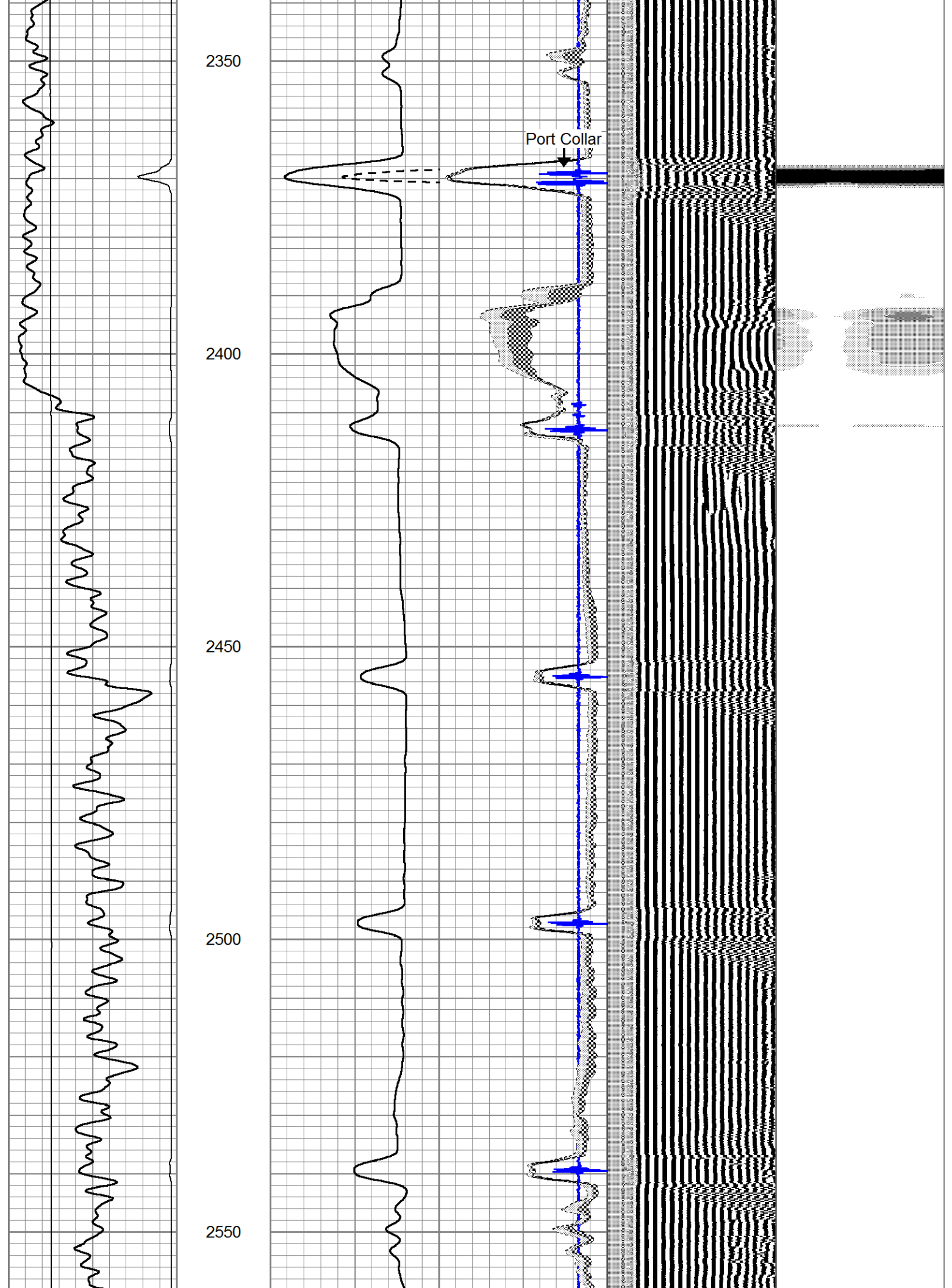
0	AMP (mV)	100
0	AMPx5 (mV)	20

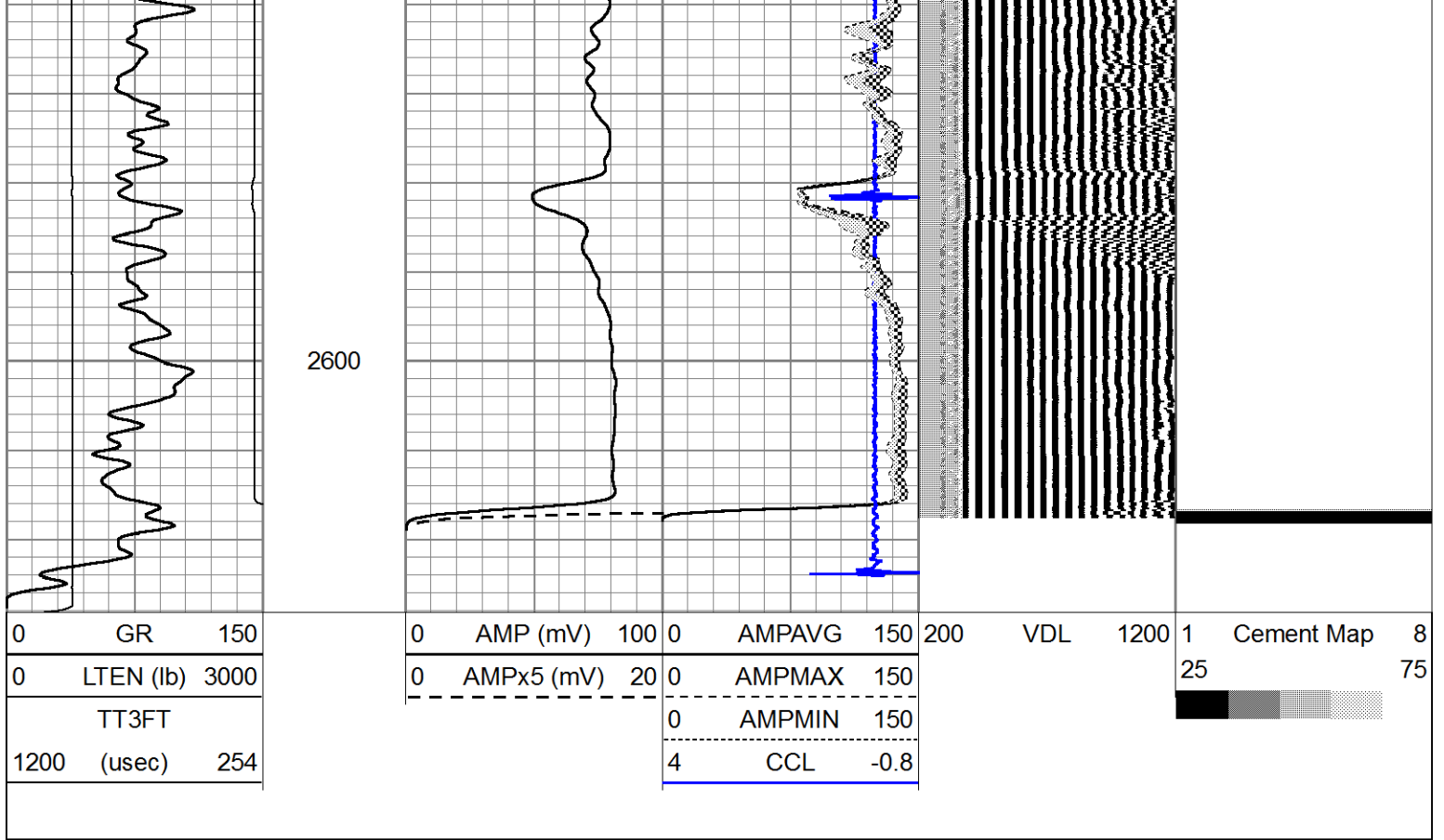
0	AMPAVG	150
0	AMPMIN	150
4	CCL	-0.8

VDL 1200

1 Cement Map 8
25 75

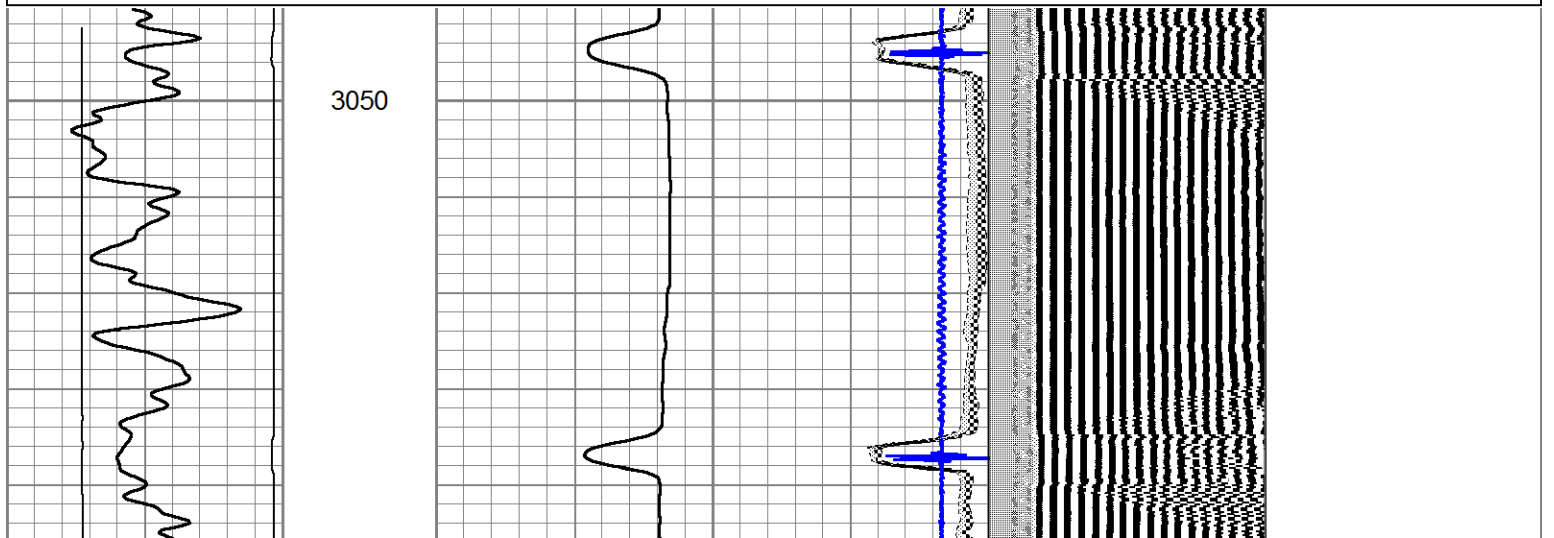
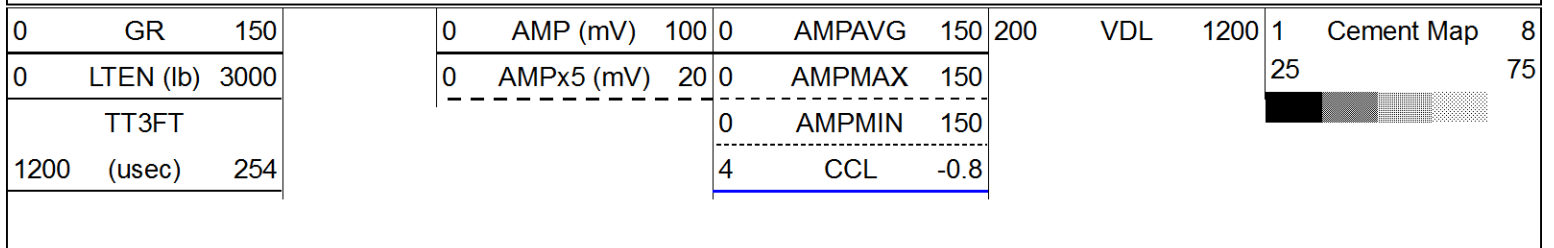






Main Pass

Database File: newgulf_capkirk_#1.db
 Dataset Pathname: sgrcbl/pass4
 Presentation Format: scbl02
 Dataset Creation: Tue Mar 19 14:08:40 2013 by Log SCH 111116
 Charted by: Depth in Feet scaled 1:240



3100

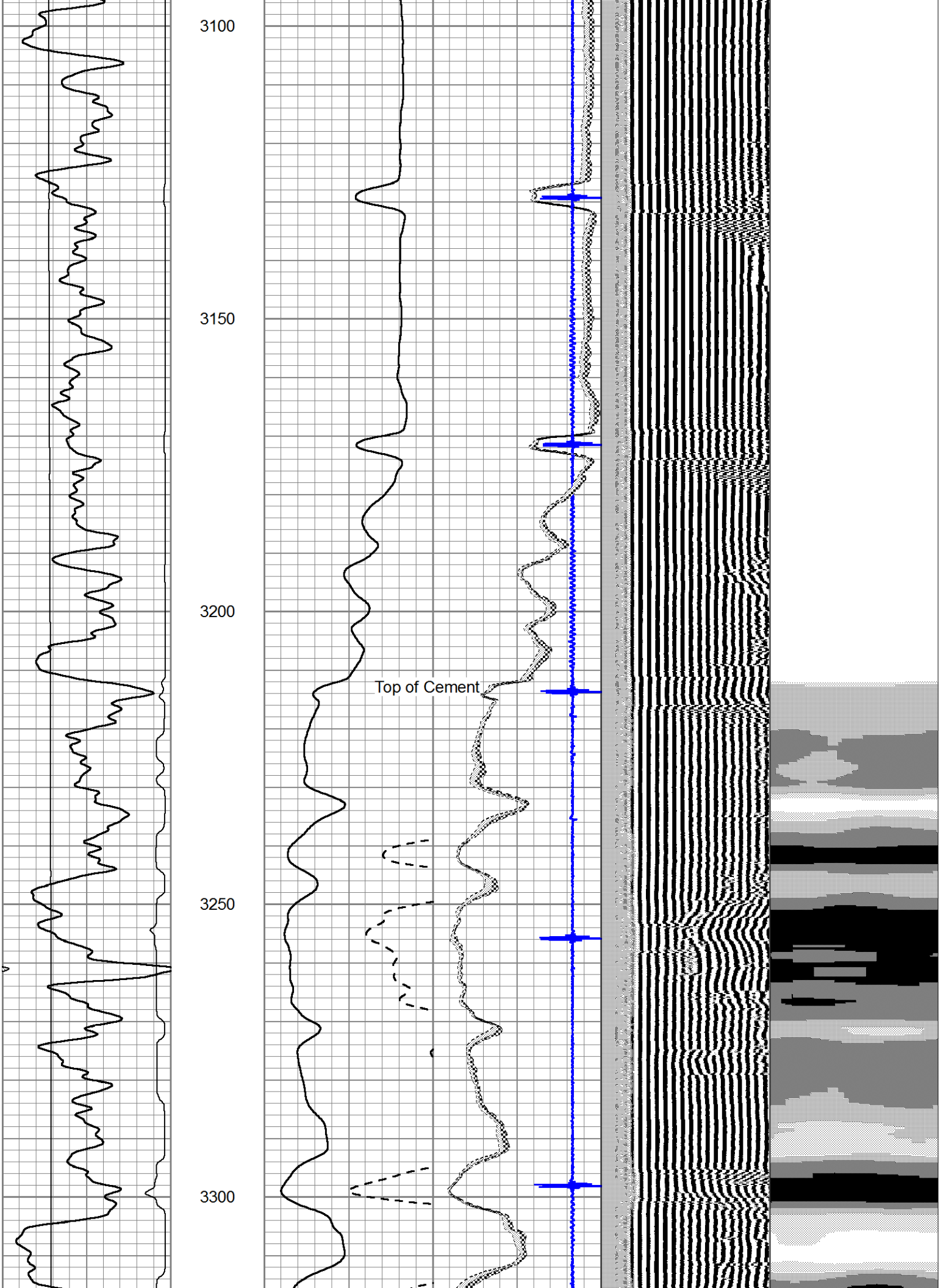
3150

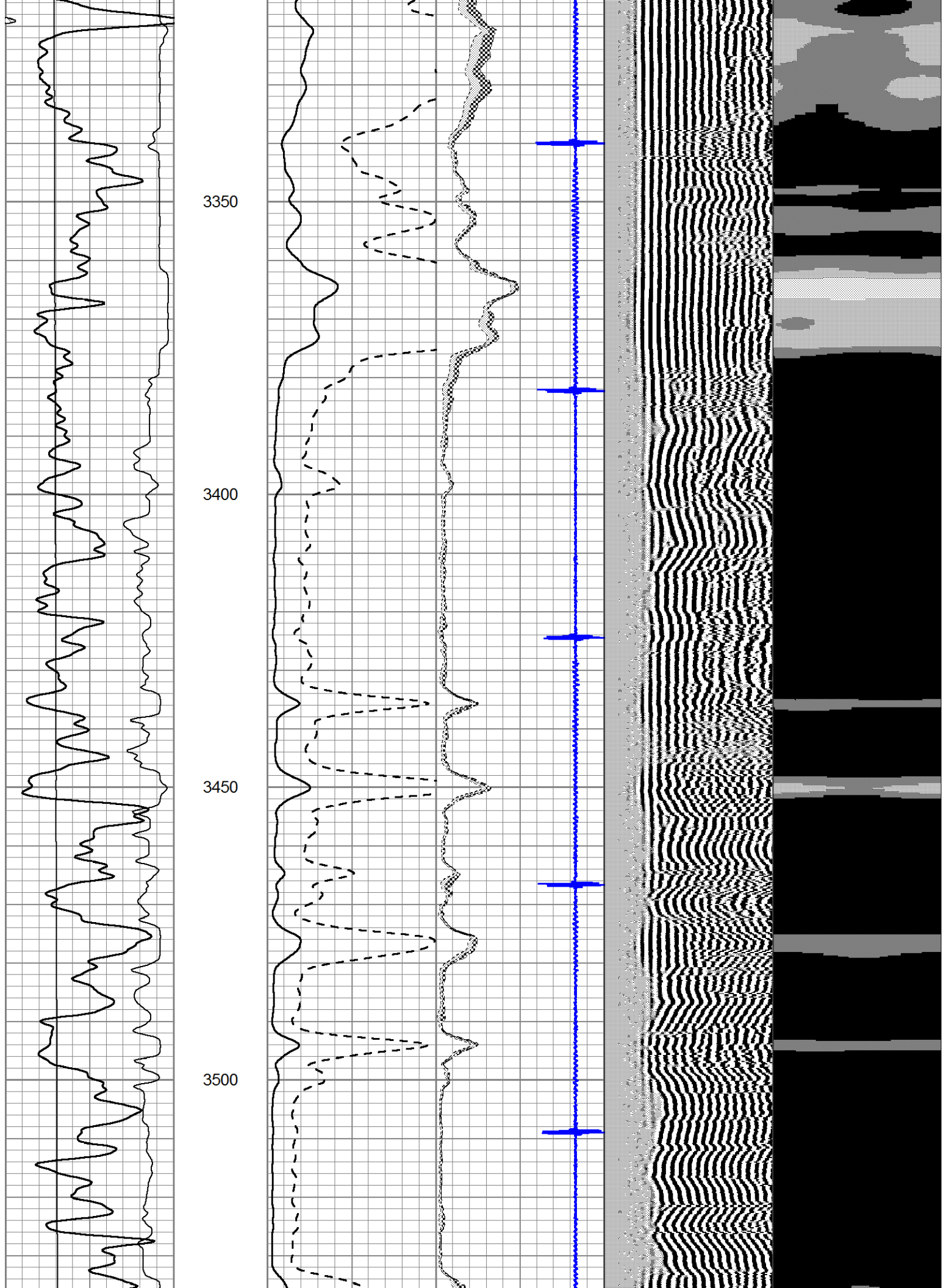
3200

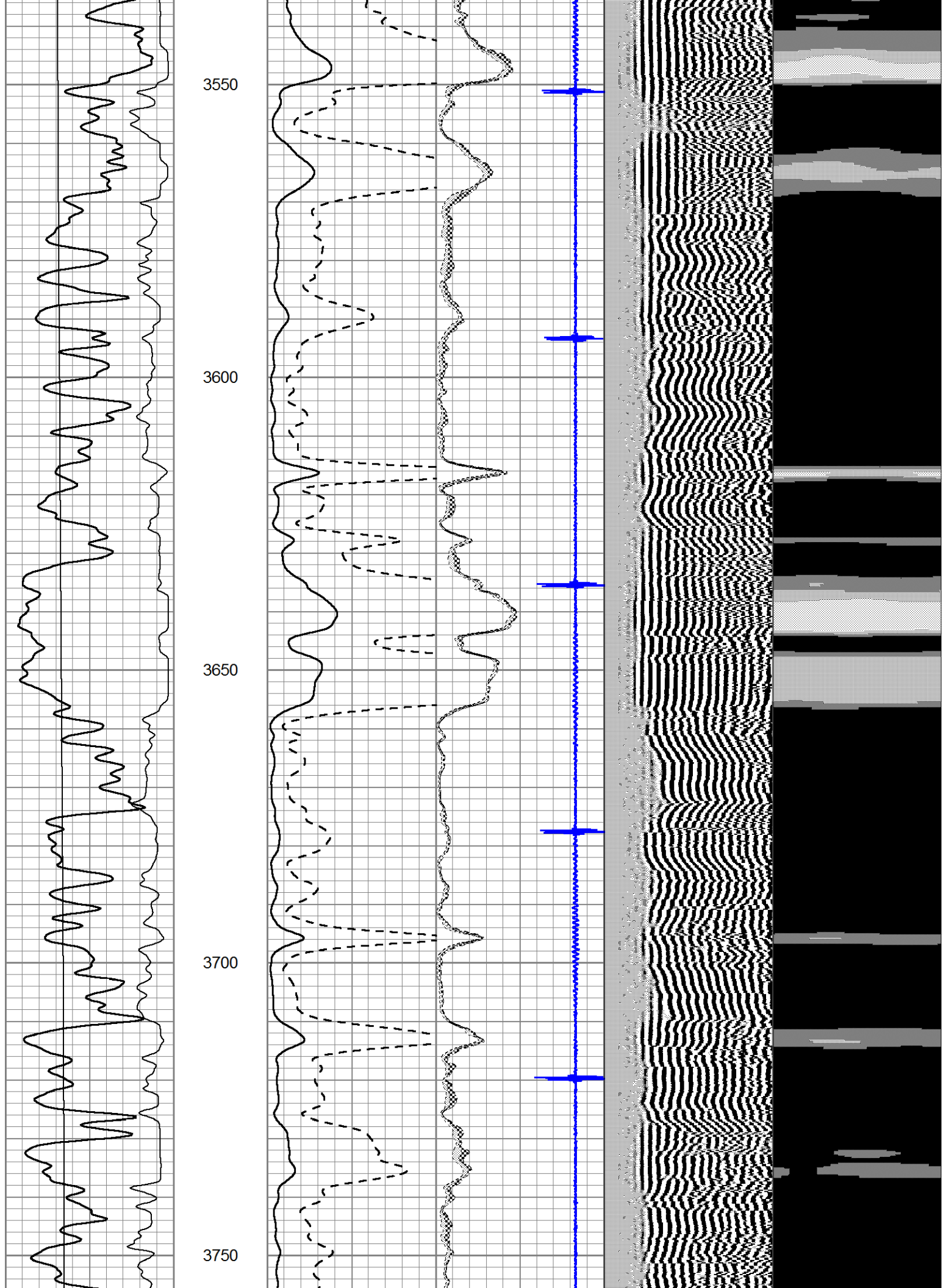
3250

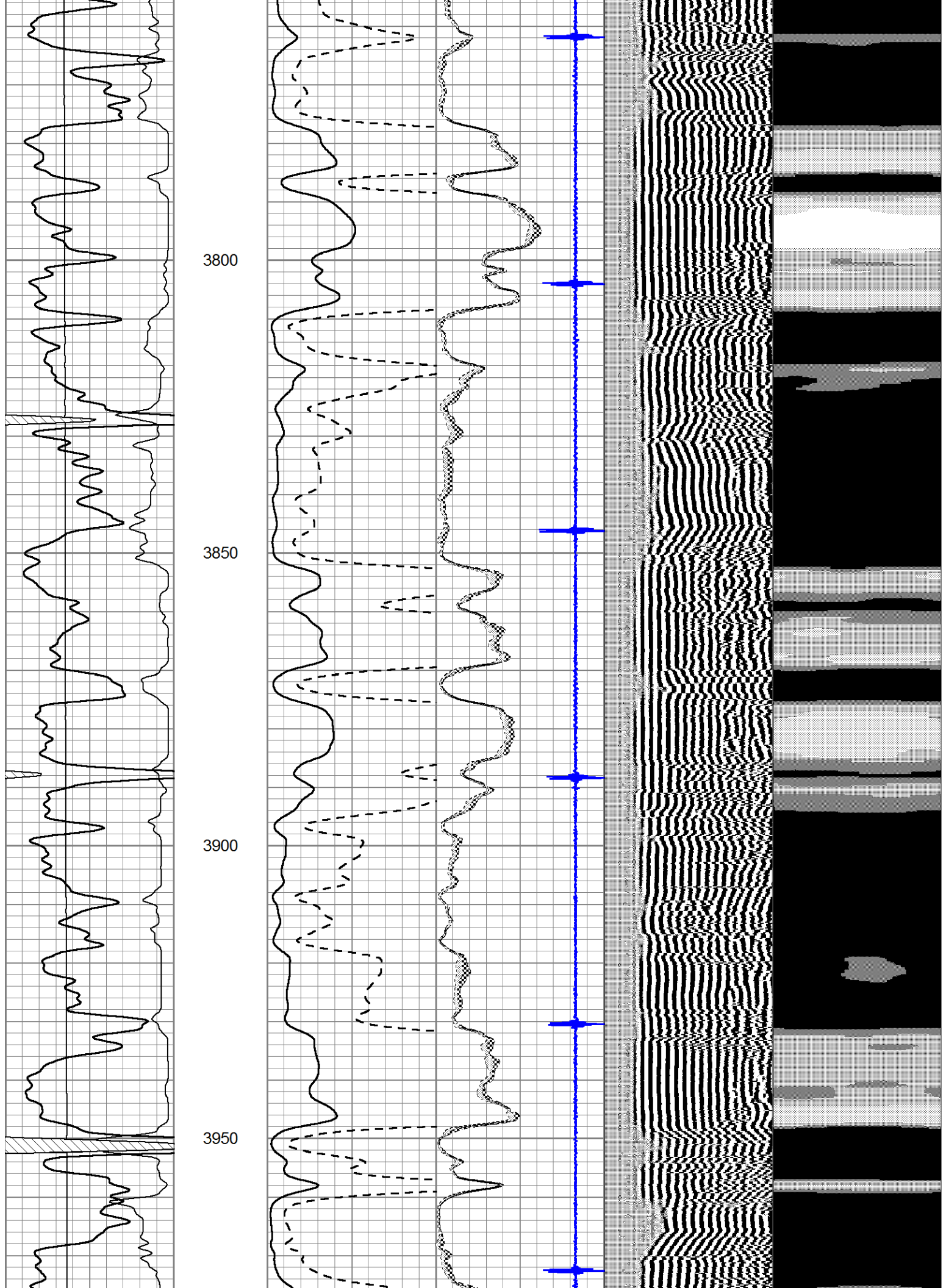
3300

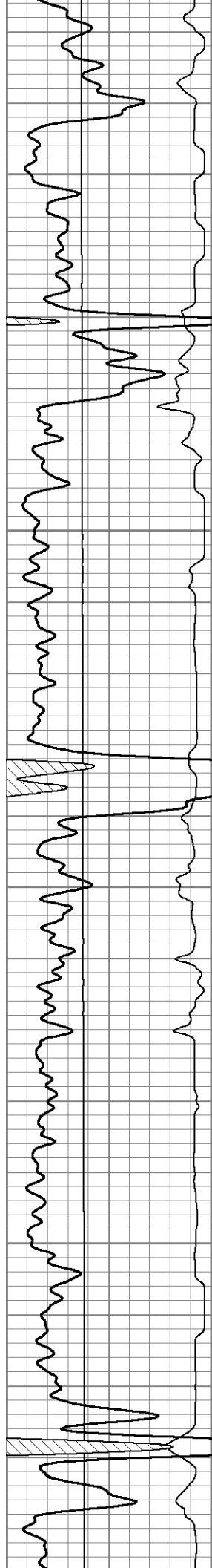
Top of Cement









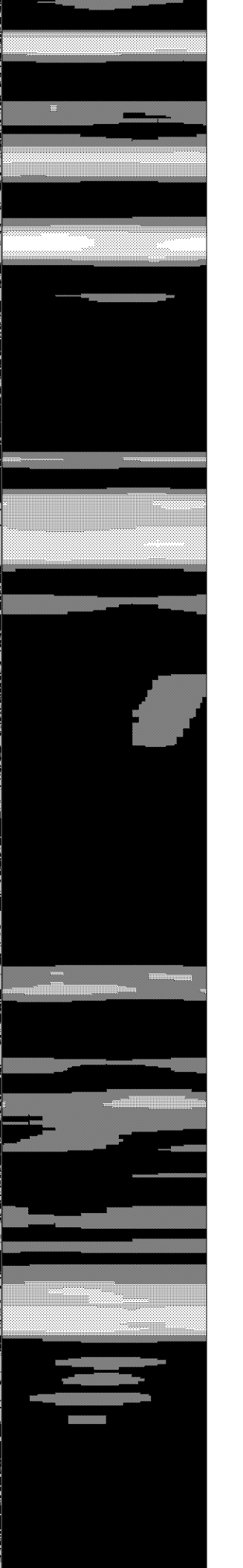
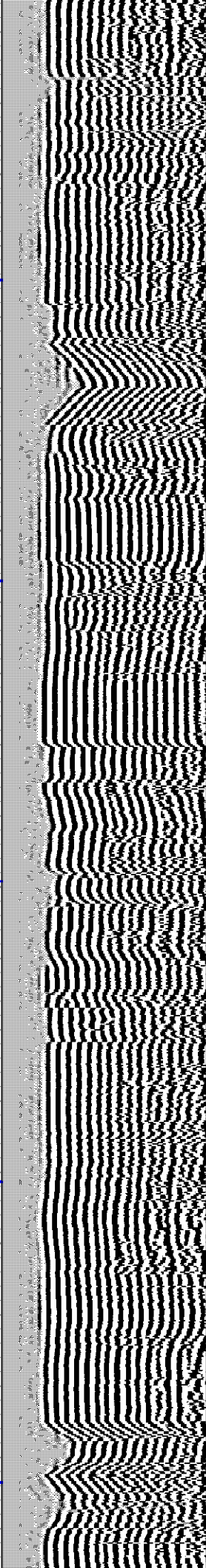
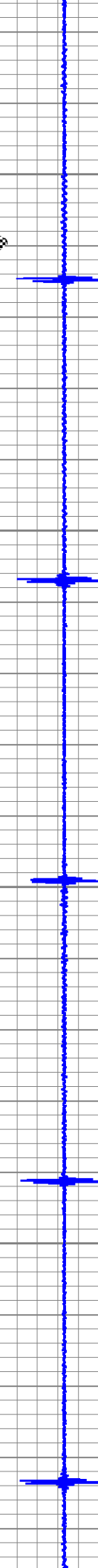
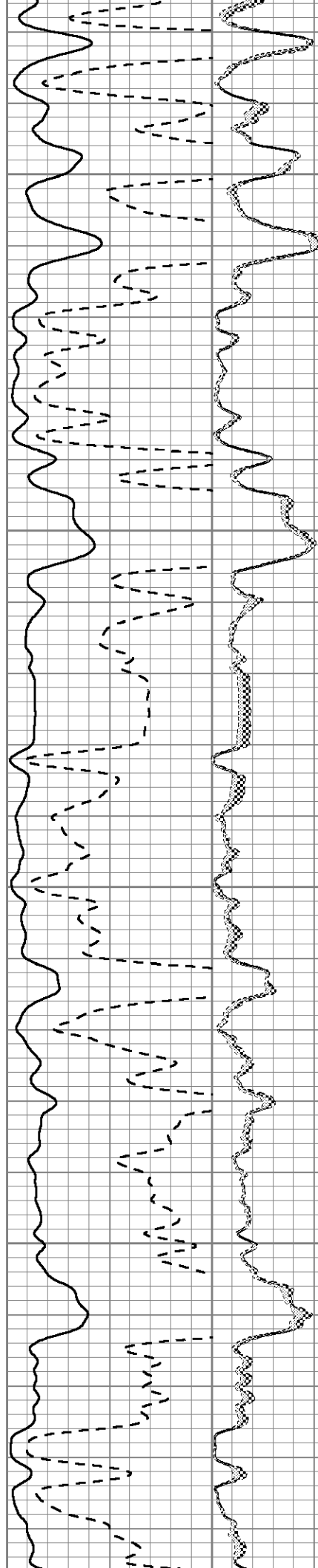


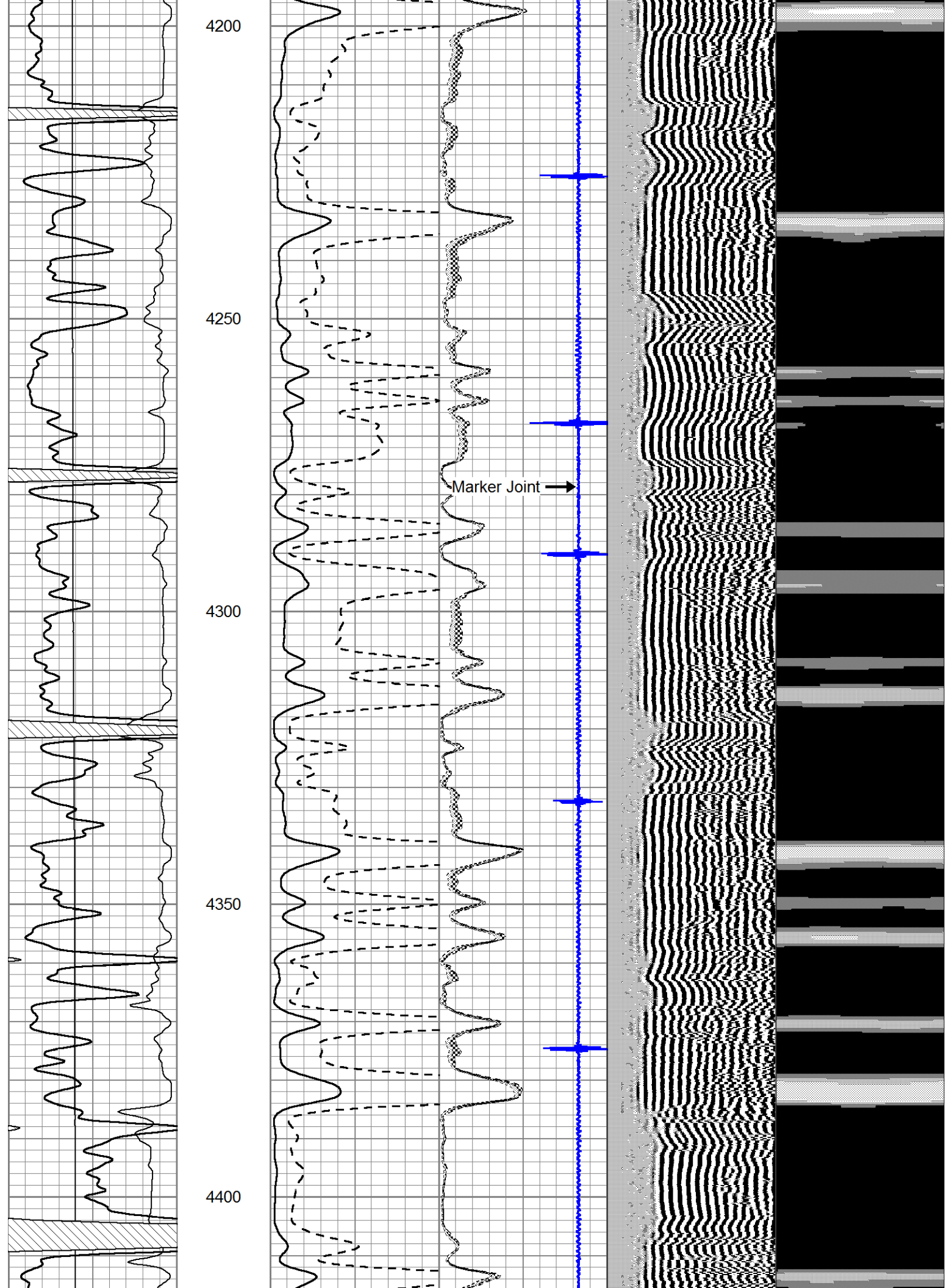
4000

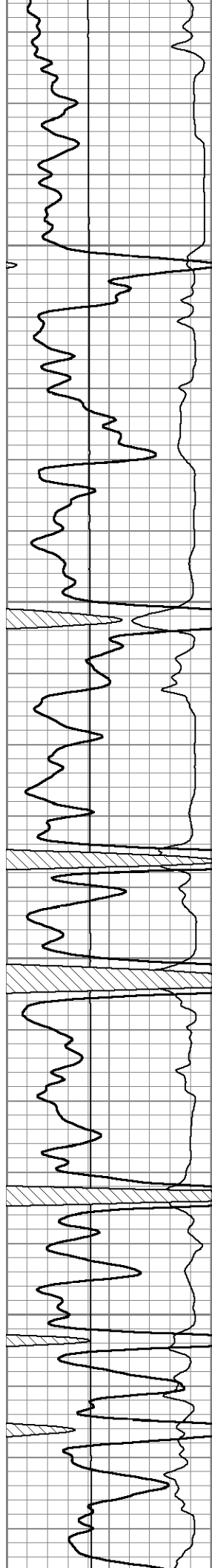
4050

4100

4150





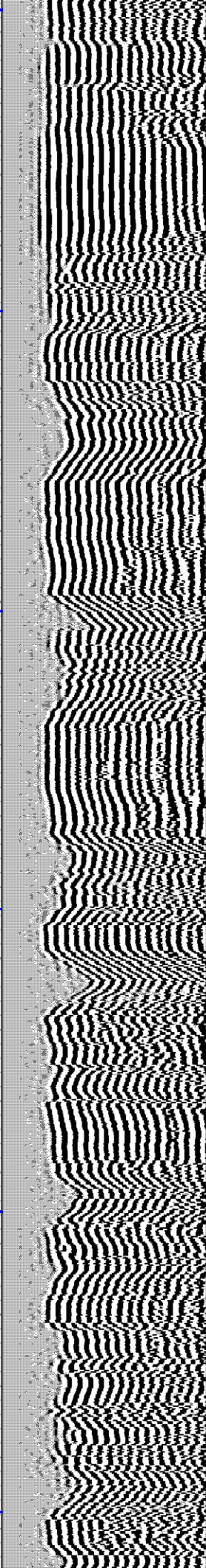
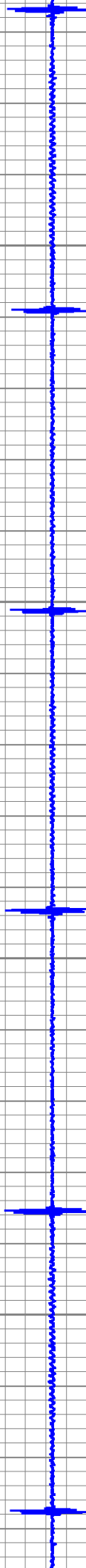
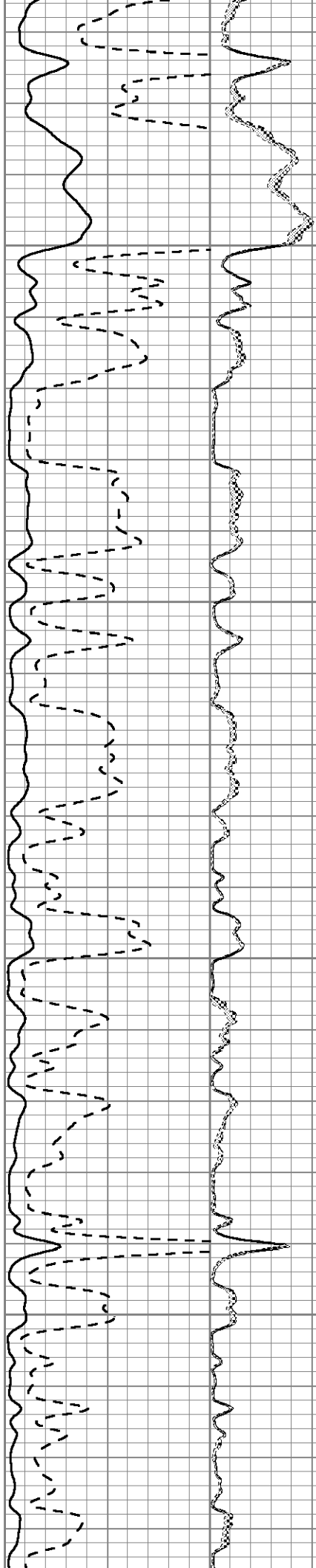


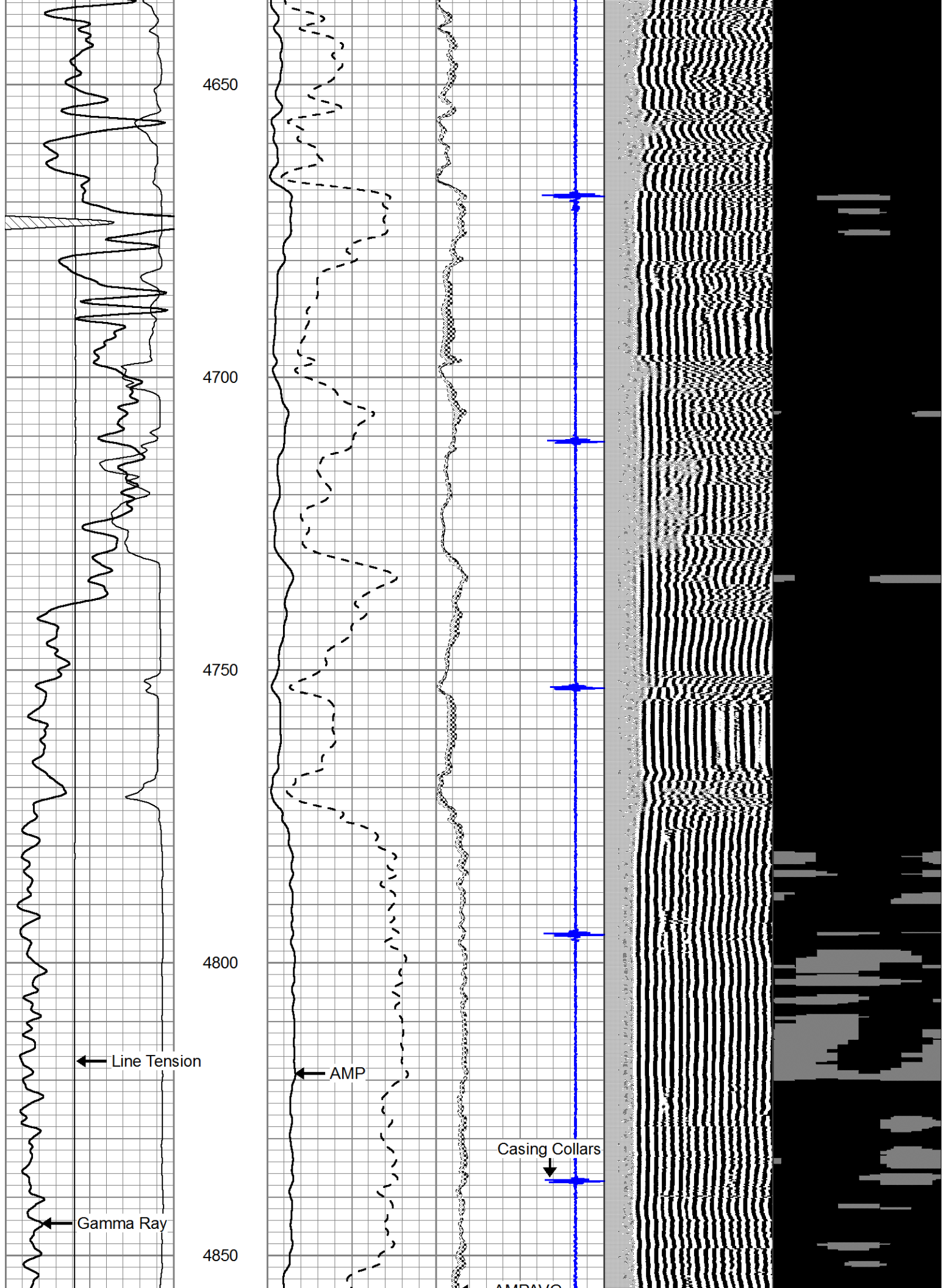
4450

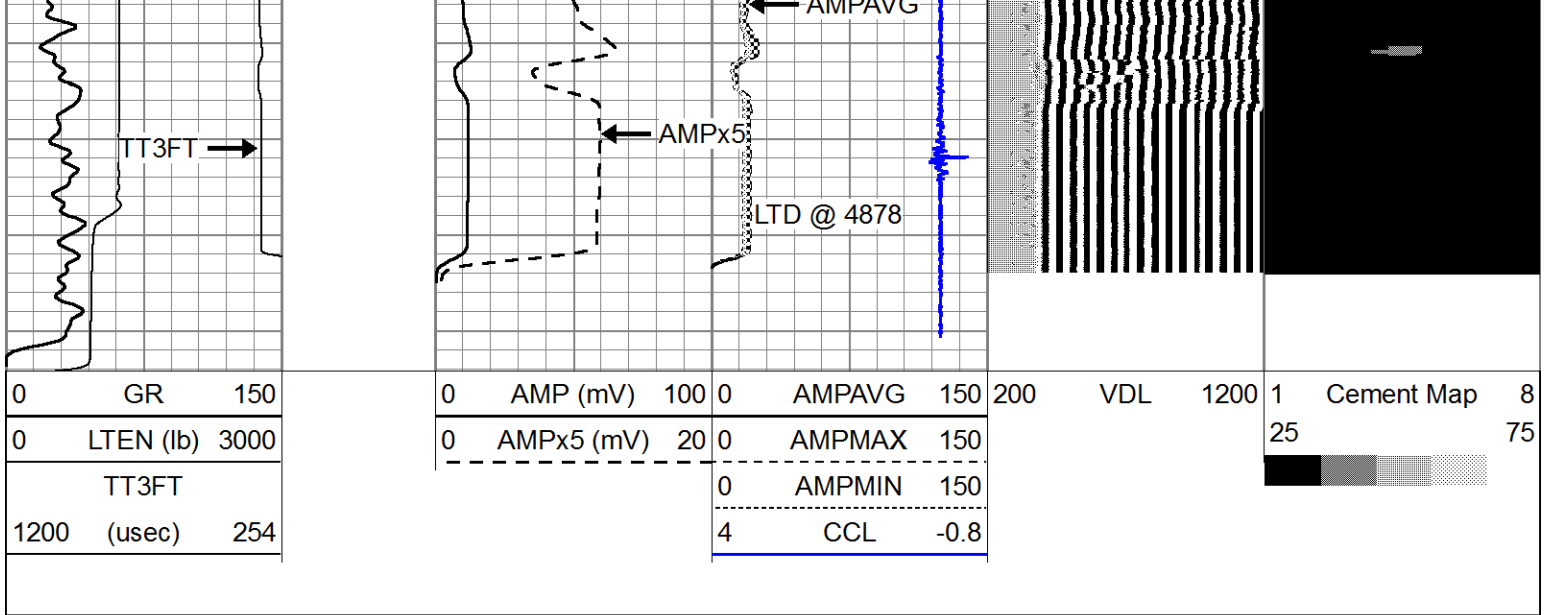
4500

4550

4600

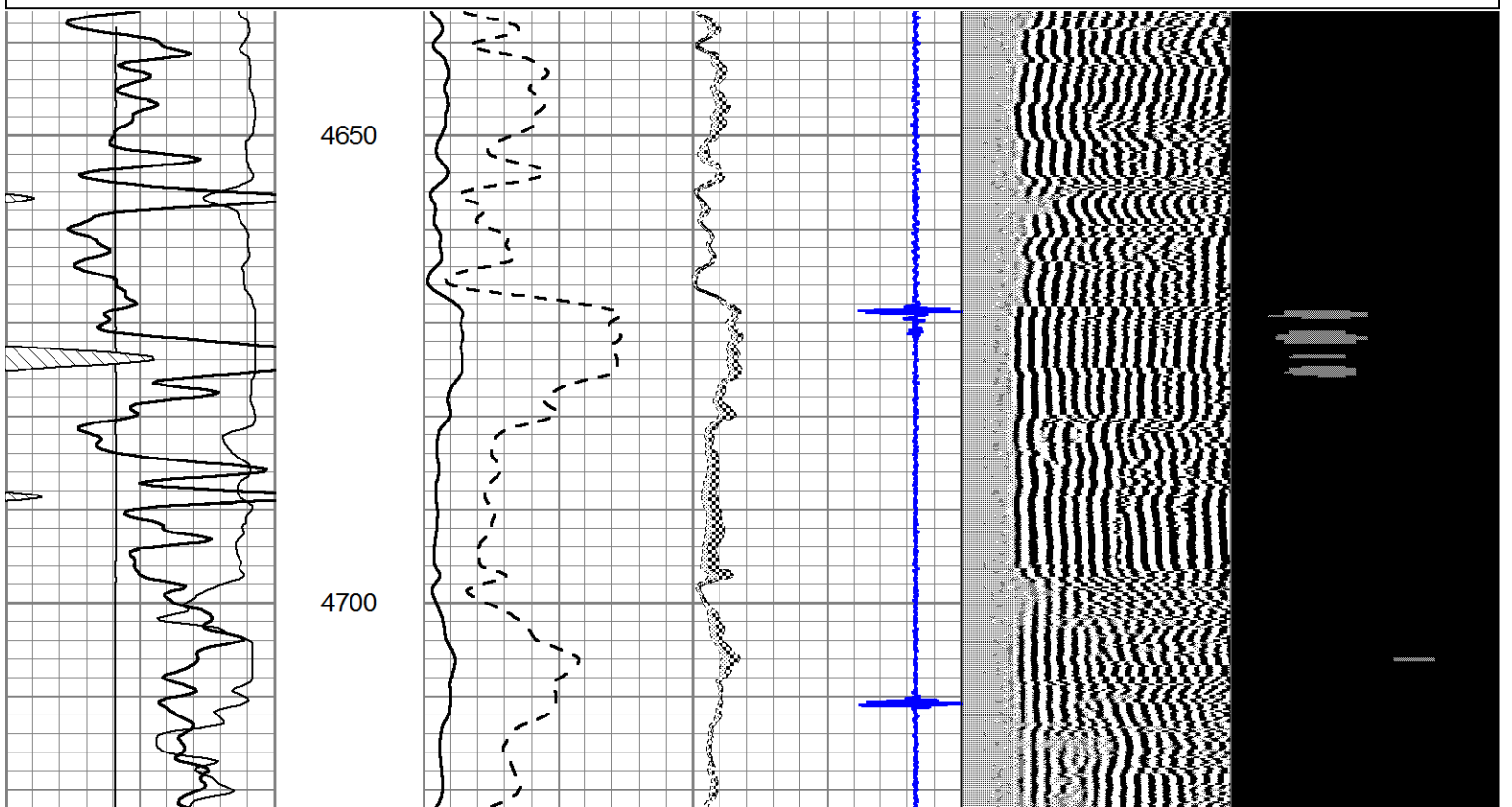
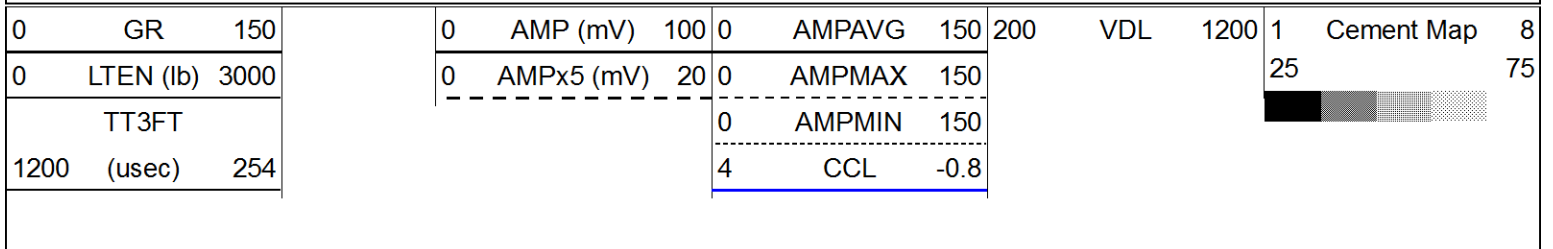


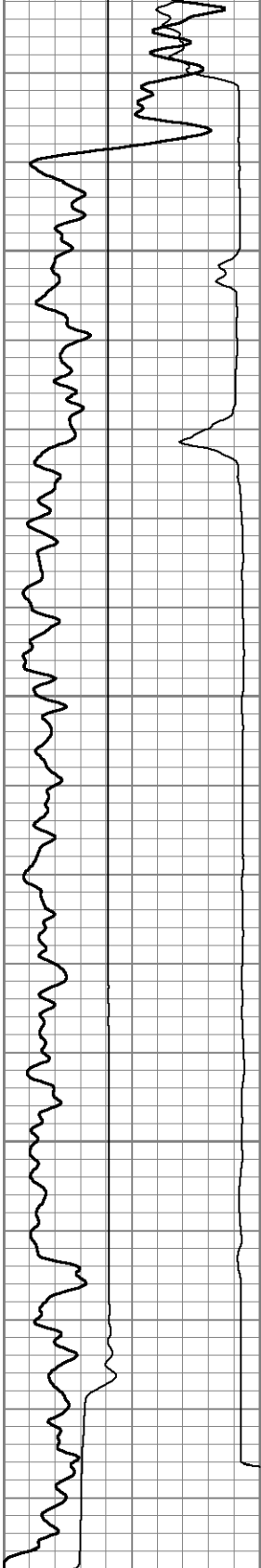




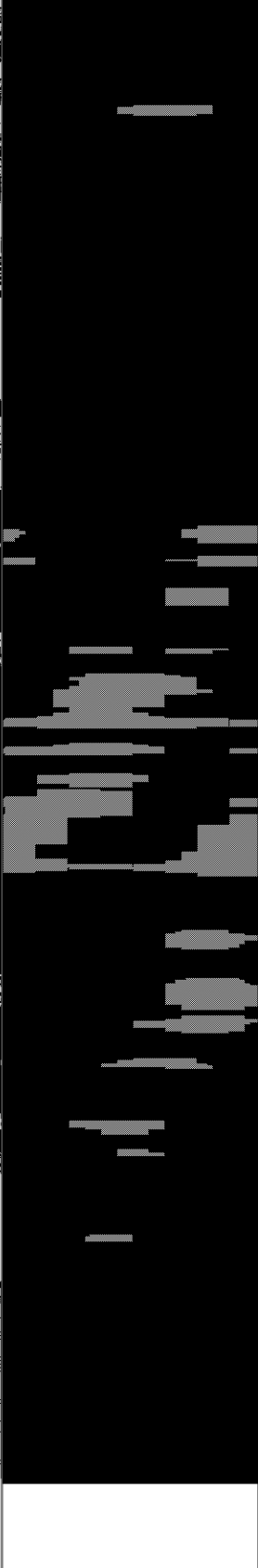
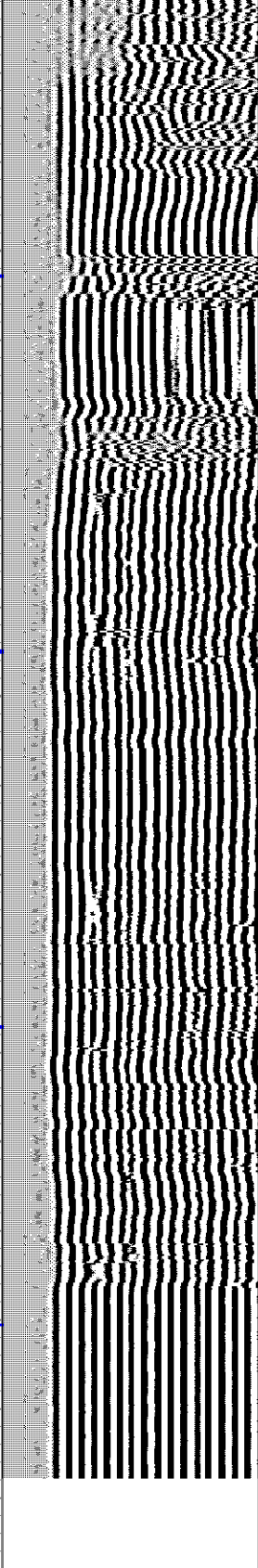
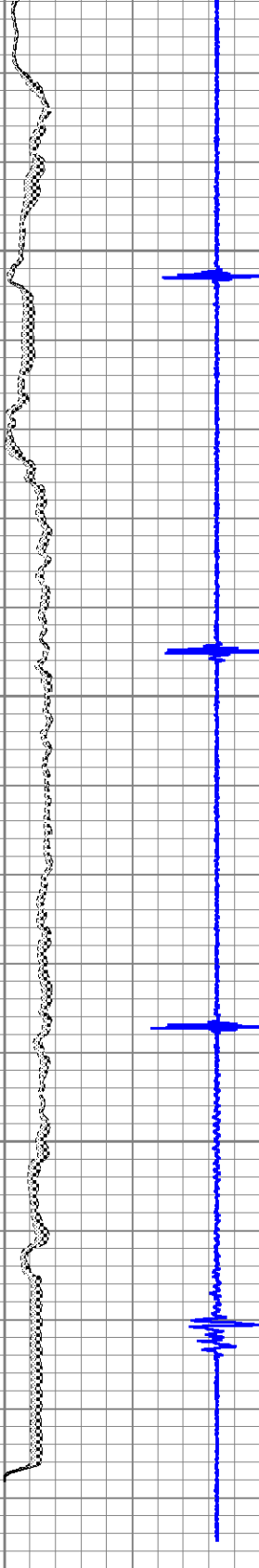
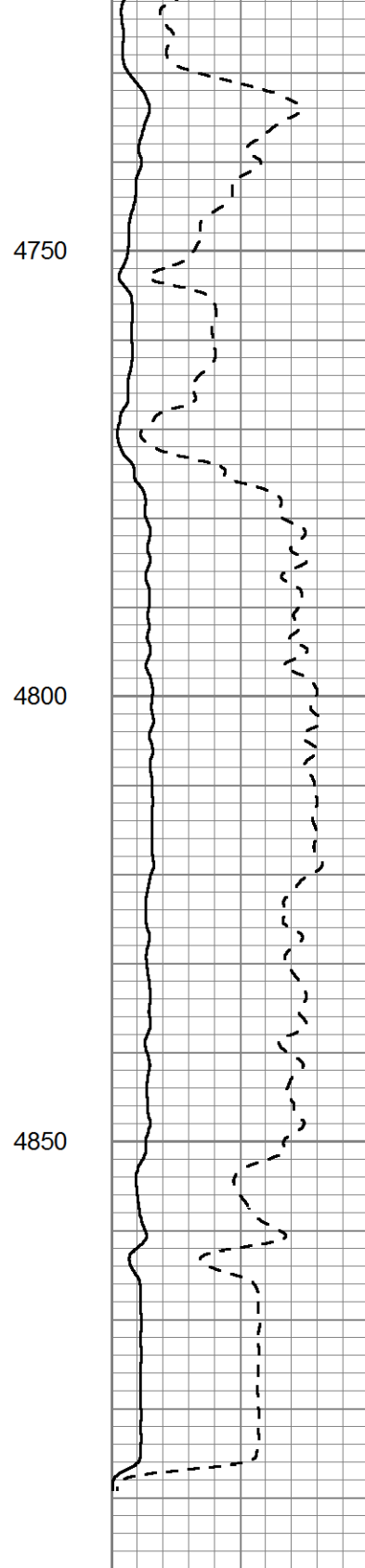
Repeat Section

Database File: newgulf_capkirk_#1.db
 Dataset Pathname: sgrcbl/pass3
 Presentation Format: scbl02
 Dataset Creation: Tue Mar 19 14:02:16 2013 by Log SCH 111116
 Charted by: Depth in Feet scaled 1:240





TT3FT		
1200	(usec)	254



4750

4800

4850