



MIDWEST SURVEYS
 LOGGING - PERFORATING - CONSULTING SERVICES
 P.O. Box 68, Osawatomie, KS 66064
 913 / 755 - 2128

GAMMA RAY / NEUTRON / CCL

File No.

API # 15-207-28,295

Company **Haas Petroleum, LLC.**
 Well **Massey No. 11i-HP**
 Field **Winterscheid**
 County **Woodson** State **Kansas**

Location **765' FSL & 2670' FEL
 SE-NE-SE-SW** Other Services
Perforate

Sec. **35** Twp. **23s** Rge. **14e** Elevation
 Permanent Datum **GL** Elevation **1141'** K.B. **1148'**
 Log Measured From **GL** D.F. **NA**
 Drilling Measured From **KB 7' From GL** G.L. **1141'**

| | |
|------------------------|---------------|
| Date | 05-15-2013 |
| Run Number | One |
| Depth Driller | 1734.0 |
| Depth Logger | 1724.0 |
| Bottom Logged Interval | 1723.0 |
| Top Log Interval | 200.0 |
| Fluid Level | Full |
| Type Fluid | Water |
| Density / Viscosity | NA |
| Salinity - PPM Cl | NA |
| Max Recorded Temp | NA |
| Estimated Cement Top | 0.0 |
| Equipment No. | Location |
| 102 | Osawatomie |
| Recorded By | Gary Windisch |
| Witnessed By | Mark Haas |

| BORE-HOLE RECORD | | | | CASING RECORD | | | |
|------------------|--------|------|--------|---------------|--------|------|--------|
| RUN | BIT | FROM | TO | SIZE | WGT. | FROM | TO |
| One | 12.25" | 0.0 | 40.0 | 8.625" | 20.0 # | 0.0 | 40.0 |
| Two | 6.75" | 40.0 | 1734.0 | 4.50" | 10.5 # | 0.0 | 1730.0 |
| | | | | | | | |

<<< Fold Here >>>

All interpretations are opinions based on inferences from electrical or other measurements and we cannot and do not guarantee the accuracy or correctness of any interpretation, and we shall not, except in the case of gross or willful negligence on our part, be liable or responsible for any loss, costs, damages, or expenses incurred or sustained by anyone resulting from any interpretation made by any of our officers, agents or employees. These interpretations are also subject to our general terms and conditions set out in our current Price Schedule.

Comments

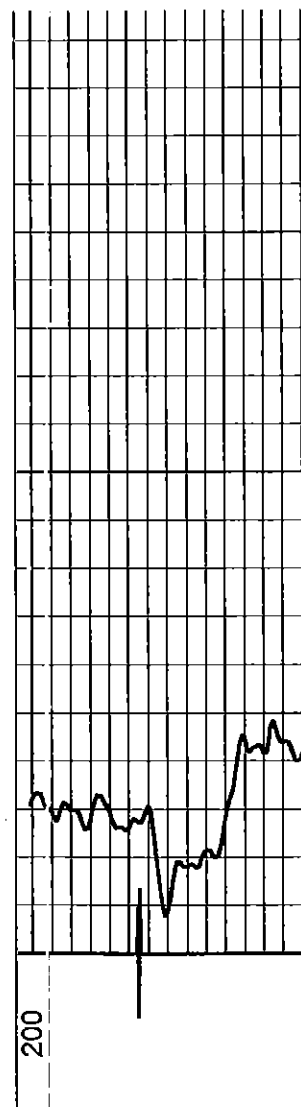
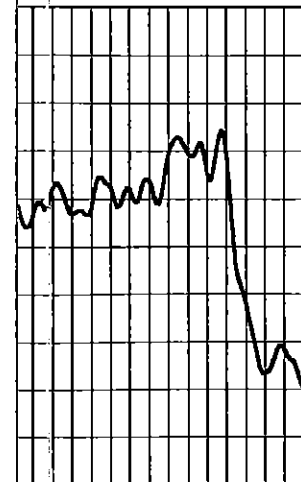
Drilling Contractor :
 Sky Drilling Rig -3

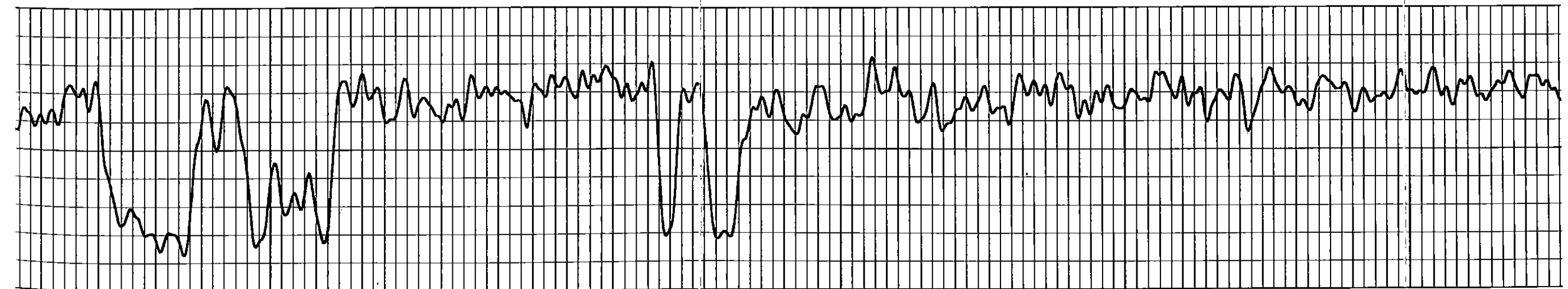
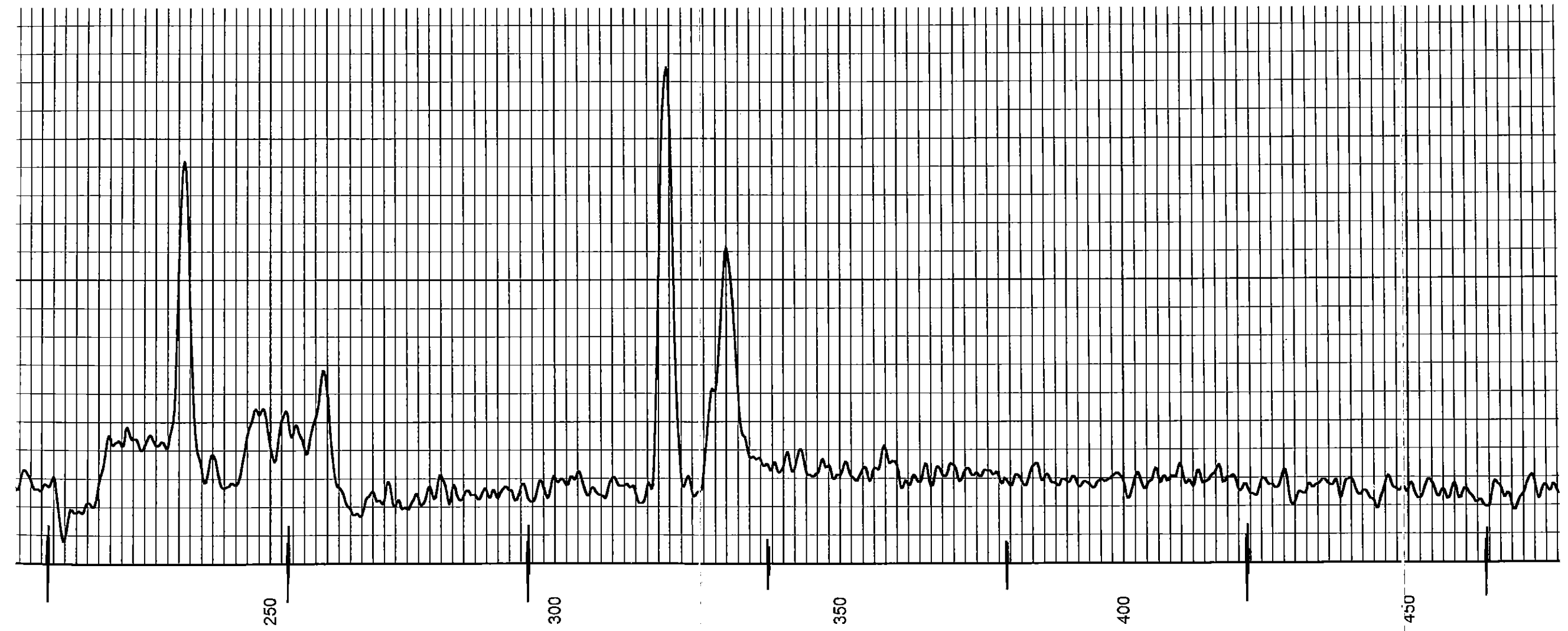
Database File: **massey11hp.db**
 Dataset Pathname: **pass1**
 Presentation Format: **gr-n-cci**
 Dataset Creation: **Wed May 15 09:32:44 2013 by Log SCH 111116**
 Charted by: **Depth in Feet scaled 1:240**

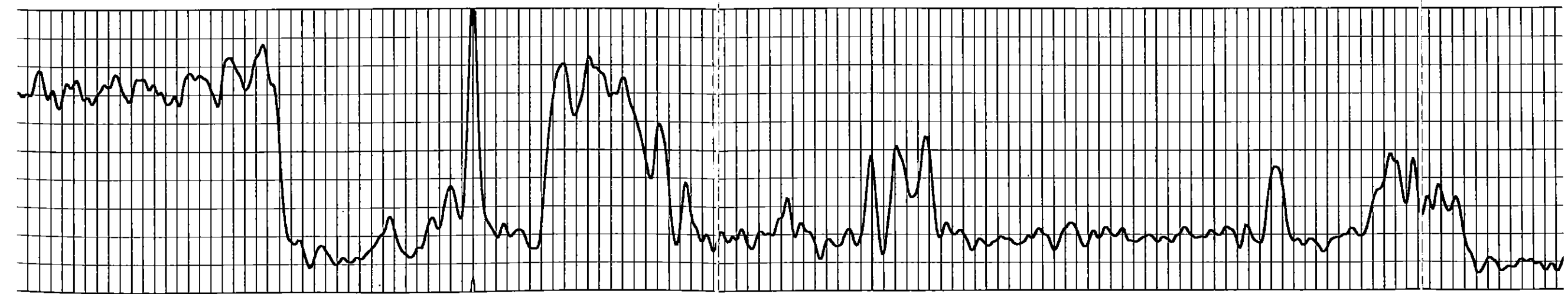
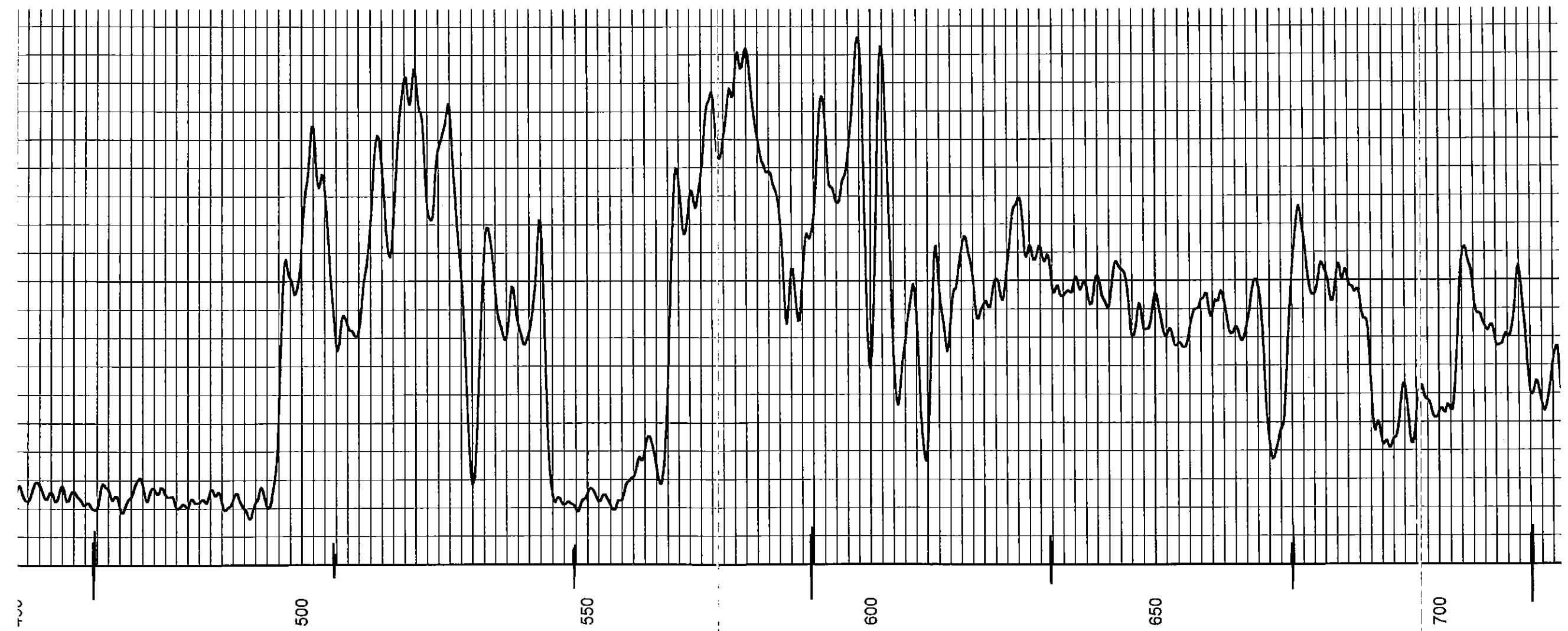
| | | |
|-----|-----------------|-----|
| 0 | Gamma Ray (cps) | 150 |
| 150 | Gamma Ray (cps) | 300 |
| | -1 CCL 1 | |
| | 100 | |

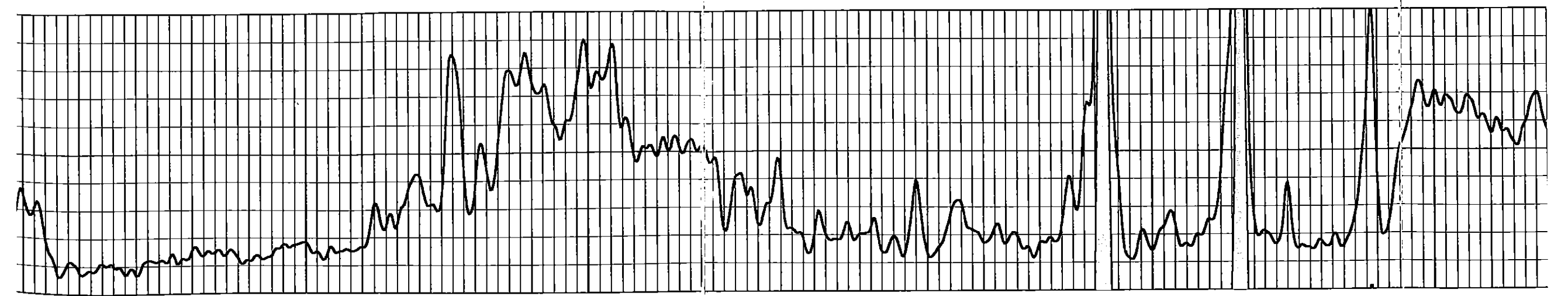
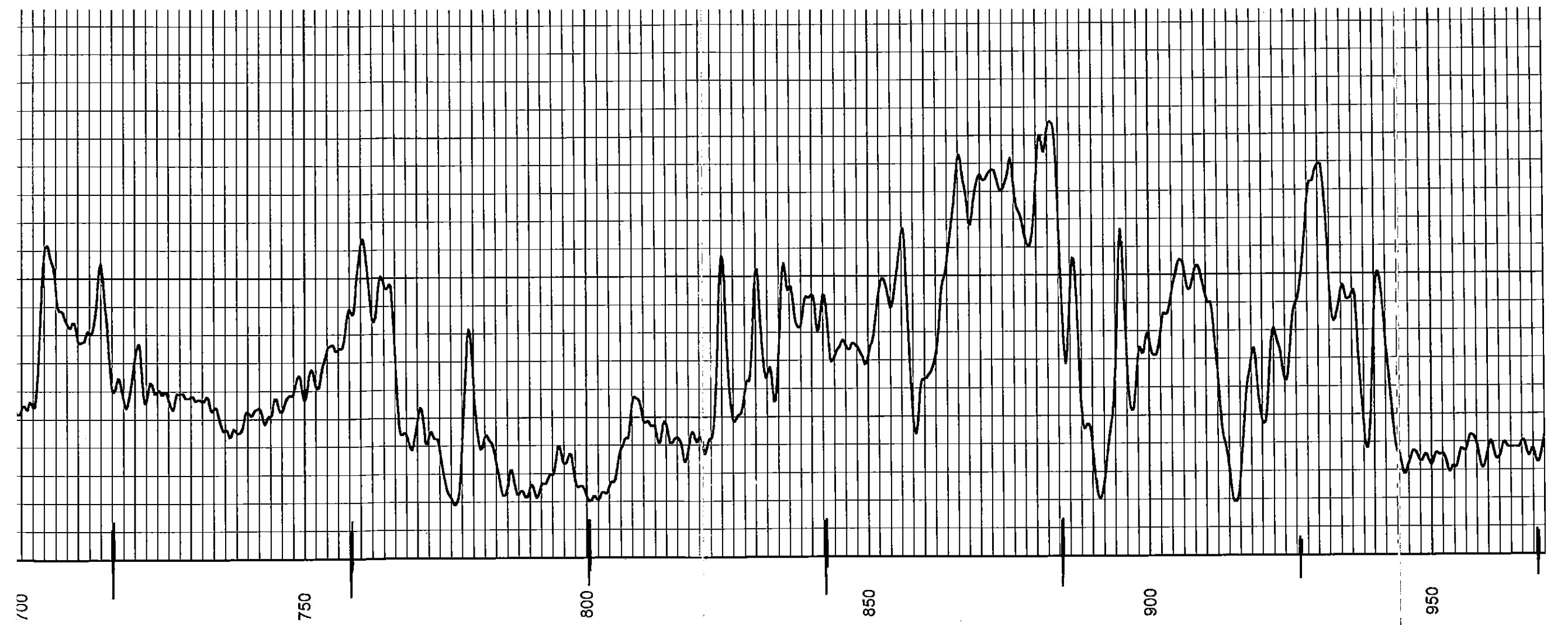
Neutron (cps)

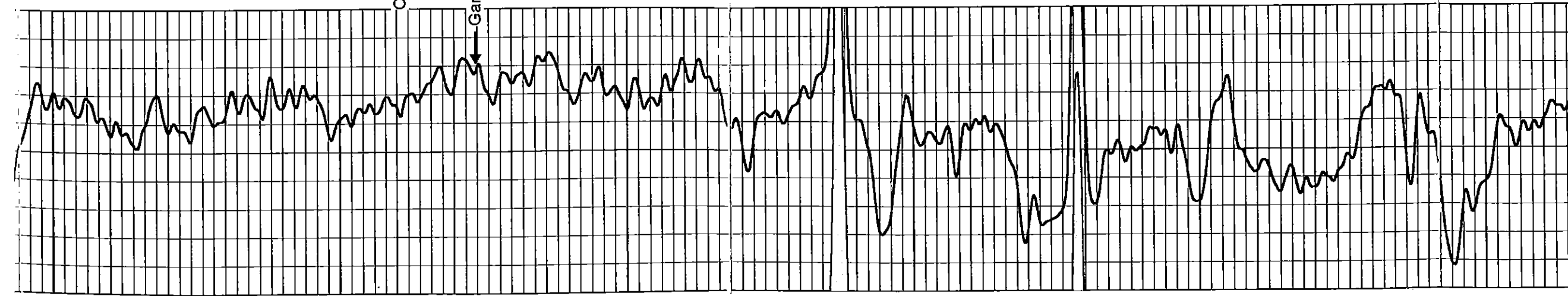
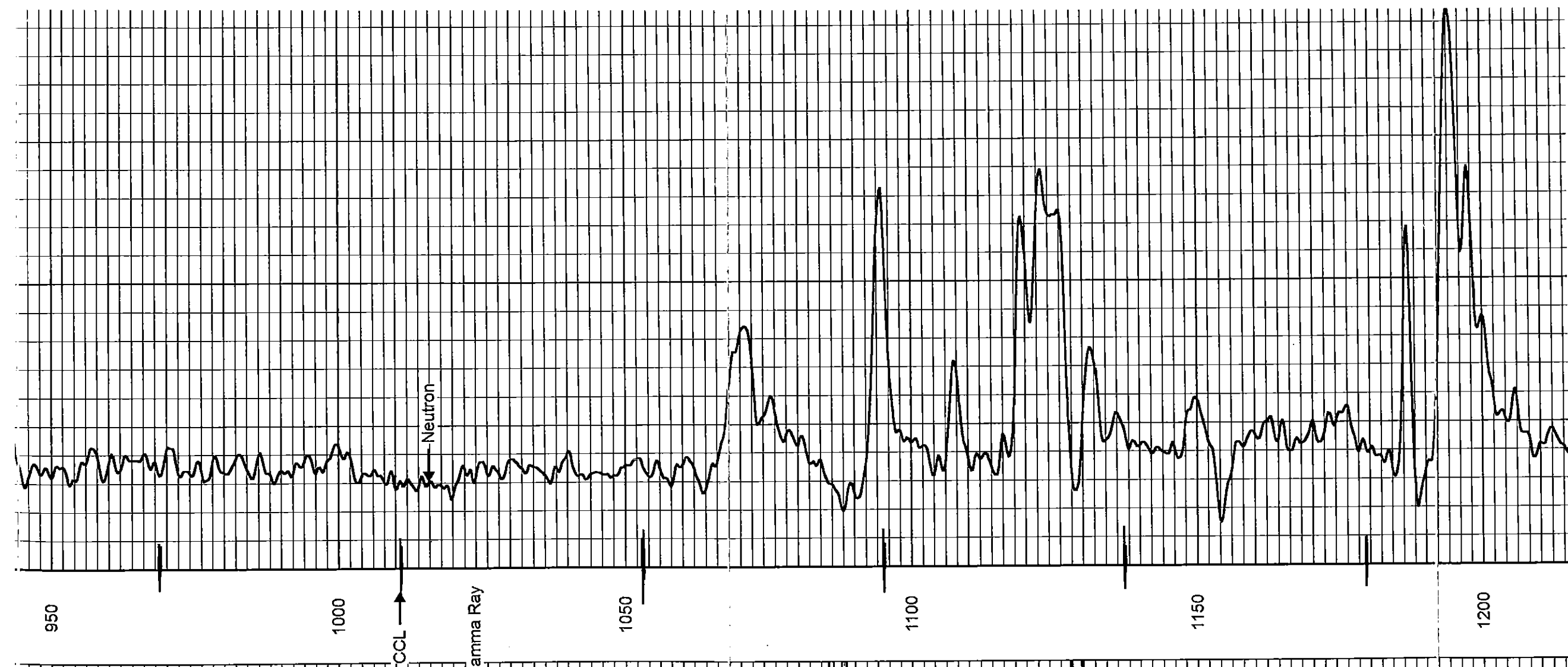
190

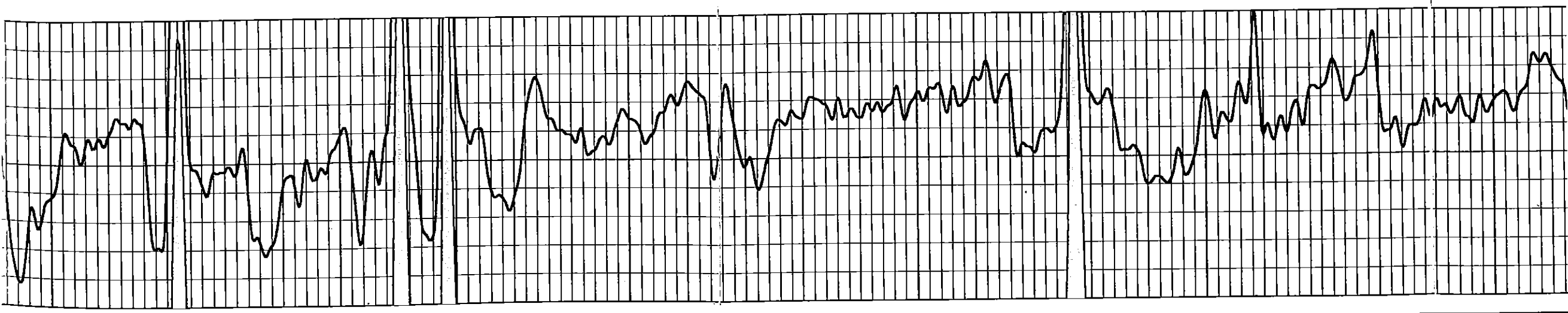
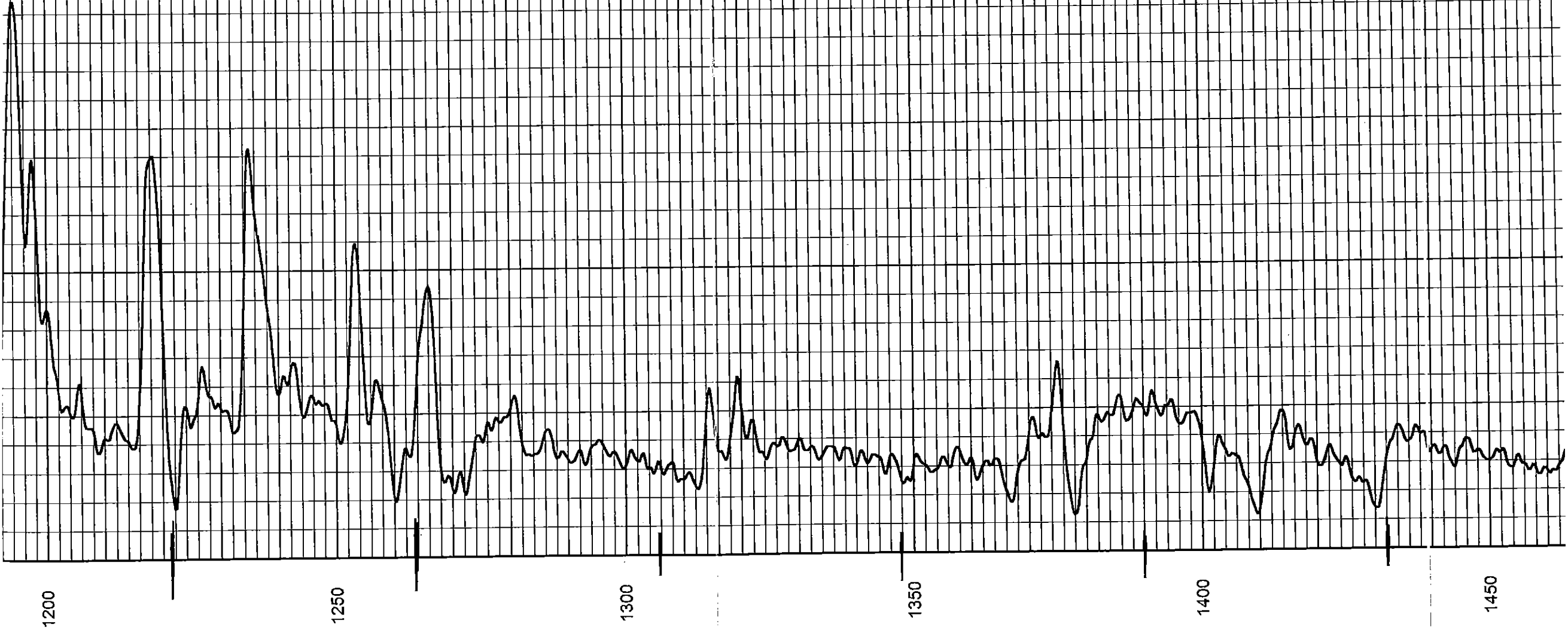












1200

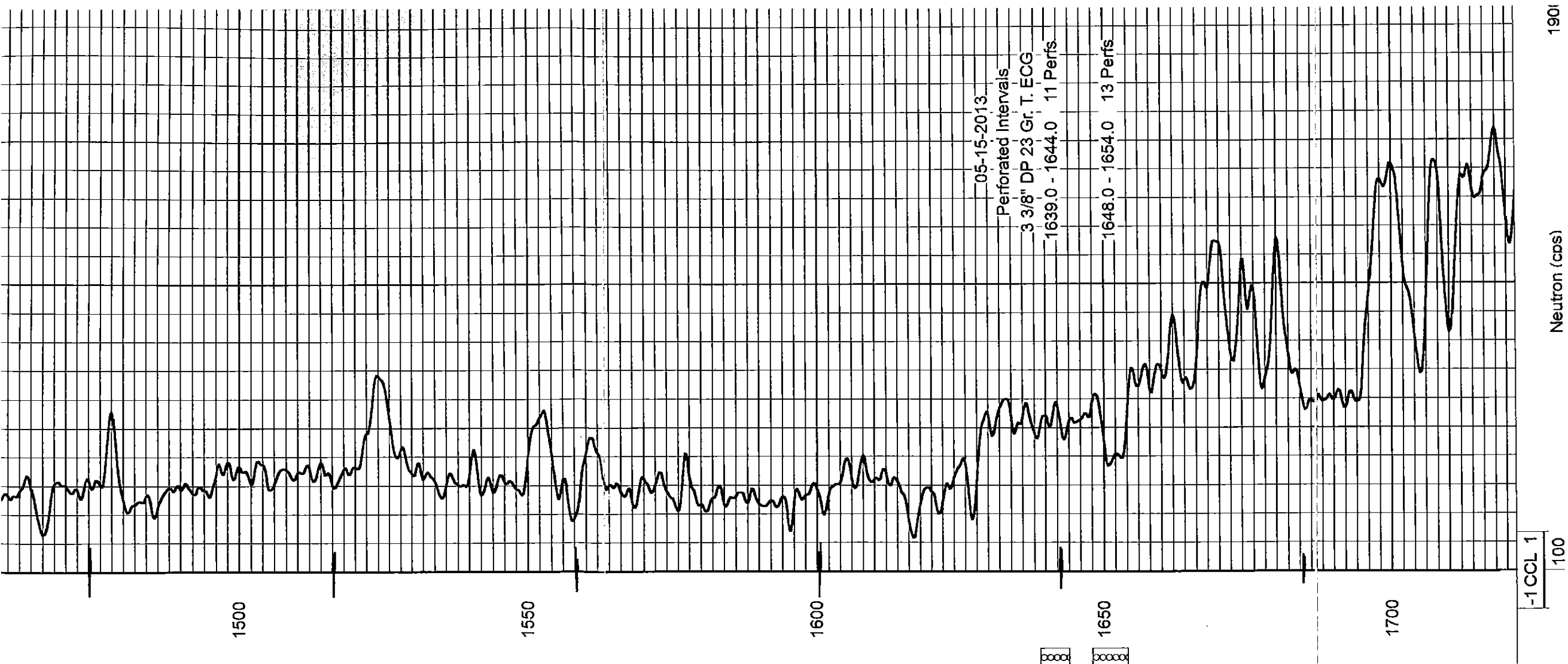
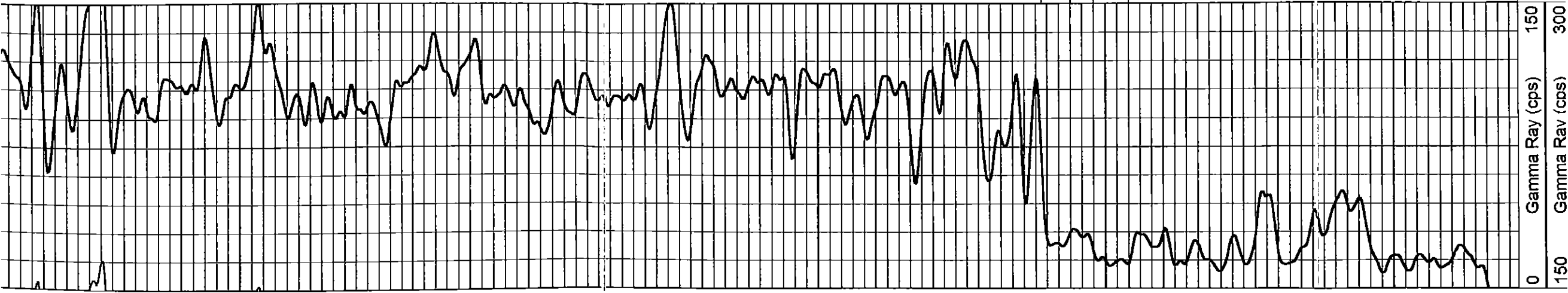
1250

1300

1350

1400

1450



05-15-2013
Perforated Intervals
3 3/8" DP 23 Gr. T. ECG
1639.0 - 1644.0 11 Perfs
1648.0 - 1654.0 13 Perfs

-1CCL 1
100

0 150 300
Gamma Ray (cps)
Gamma Ray (cps)

190
Neutron (cps)