



Pioneer Energy Services

Sonic Cement
Bond Log

15-171-20930-00-00

Company Shakespeare Oil Company, Inc.
Well Nightingale No. 1-28
Field Wildcat
County Scott
State Kansas

Location 985' FNL & 335' FEL
NW-SE-NE-NE

Sec: 28 Twp: 16W Rge: 34

Other Services
Mast Trailer

Permanent Datum Ground Level Elevation 3130
Log Measured From Kelly Bushing 10 Ft. Above Perm. Datum
Drilling Measured From Kelly Bushing

Elevation
K.B. 3140
D.F. 3138
G.L. 3130

| | | |
|---------------------------|--------------|------|
| Run Number | One | |
| Date Survey | 4/2/2013 | |
| Date Cementing | 3/30/2013 | |
| Type Cementing Operation | Primary | |
| Depth Driller | 4875 | |
| Depth Logger | 4824 | |
| Logged Interval | 4822 to 3550 | to |
| Casing Driller | 4.5 @ T.D. | @ |
| Float Collar -- D.V. Tool | 2407 | |
| Squeeze Depth | | |
| Amount & Type Cement | | |
| Amount & Type Admix | | |
| Type Fluid In Hole | Water | |
| Fluid Level | Full | |
| Salinity PPM CL | | |
| Weight lb/gal -- Vis. | | |
| Approx. Logged Cement Top | 3760 | |
| Calculated Cement Top | | |
| Max. Hole Temperature | 109 | |
| Tool No. | D-1 | |
| Spacing Recorded | 3-5 | |
| Equipment -- Location | 72 | Hays |
| Recorded By | K. Ladrigan | |
| Witnessed By | Tom Larson | |

<<< Fold Here >>>

All interpretations are opinions based on inferences from electrical or other measurements and we cannot and do not guarantee the accuracy or correctness of any interpretation, and we shall not, except in the case of gross or willful negligence on our part, be liable or responsible for any loss, costs, damages, or expenses incurred or sustained by anyone resulting from any interpretation made by any of our officers, agents or employees. These interpretations are also subject to our general terms and conditions set out in our current Price Schedule.

Comments

Thank you for using Pioneer Energy Services, Inc. 785.625.3858

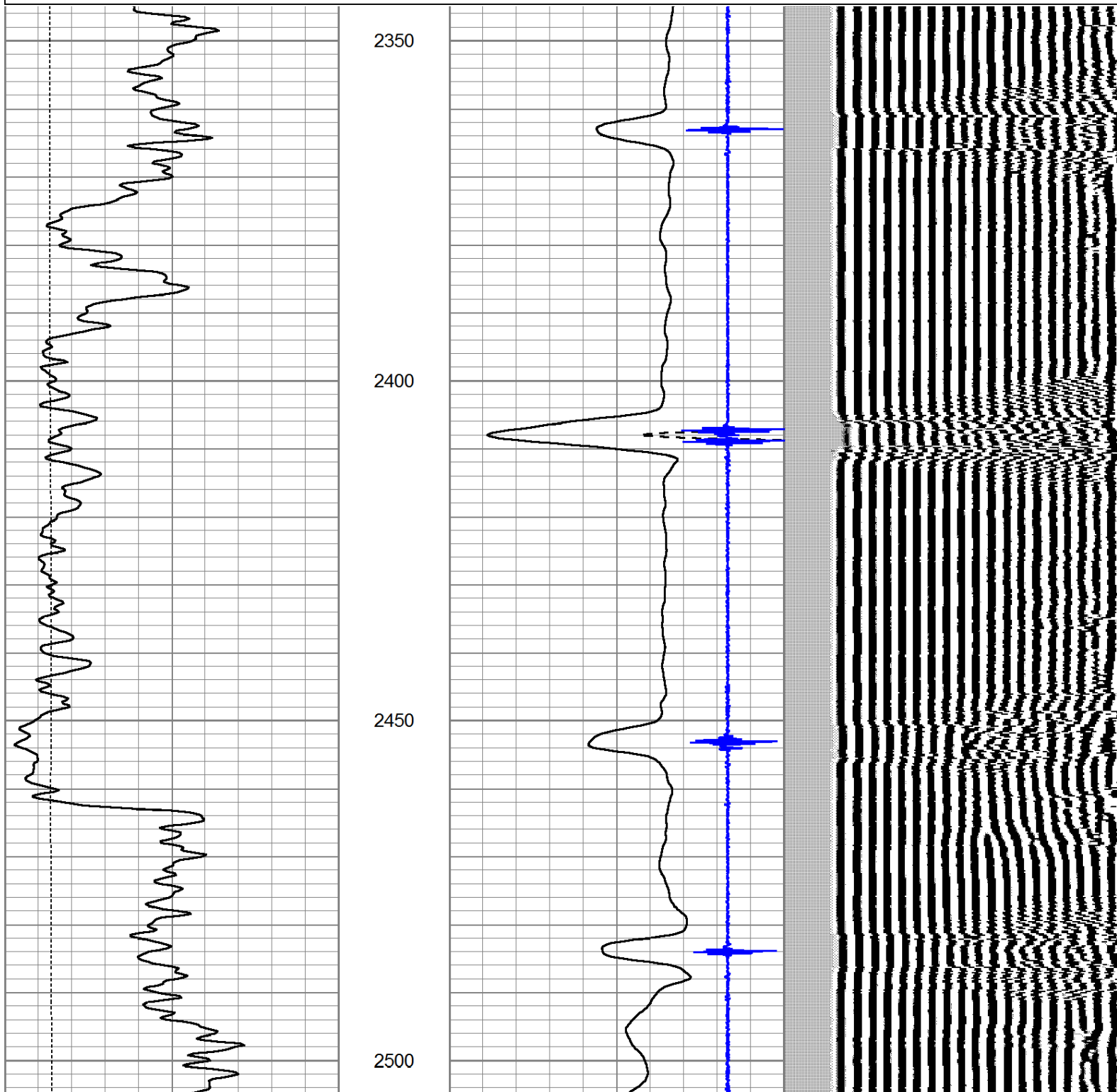
Pence, KS., 1 South on Cherokee Road
West Into.



Port Collar @ 2407

Database File: shake_pence.db
 Dataset Pathname: grcb/grcbl/pass4
 Presentation Format: cldig
 Dataset Creation: Tue Apr 02 12:47:26 2013 by Log SCH 111116
 Charted by: Depth in Feet scaled 1:240

| | | | | | | | | | |
|---|-----------|------|---------|---|--------------------------|-----|-----|------------------|------|
| 0 | GR (GAPI) | 150 | AMP3 | 0 | Amplitude (mV) | 100 | 200 | Variable Density | 1200 |
| 0 | LTEN (lb) | 5000 | (mV) | 0 | Amplified Amplitude (mV) | 20 | | | |
| | | | -100 10 | 5 | Collar Locator | -1 | | | |

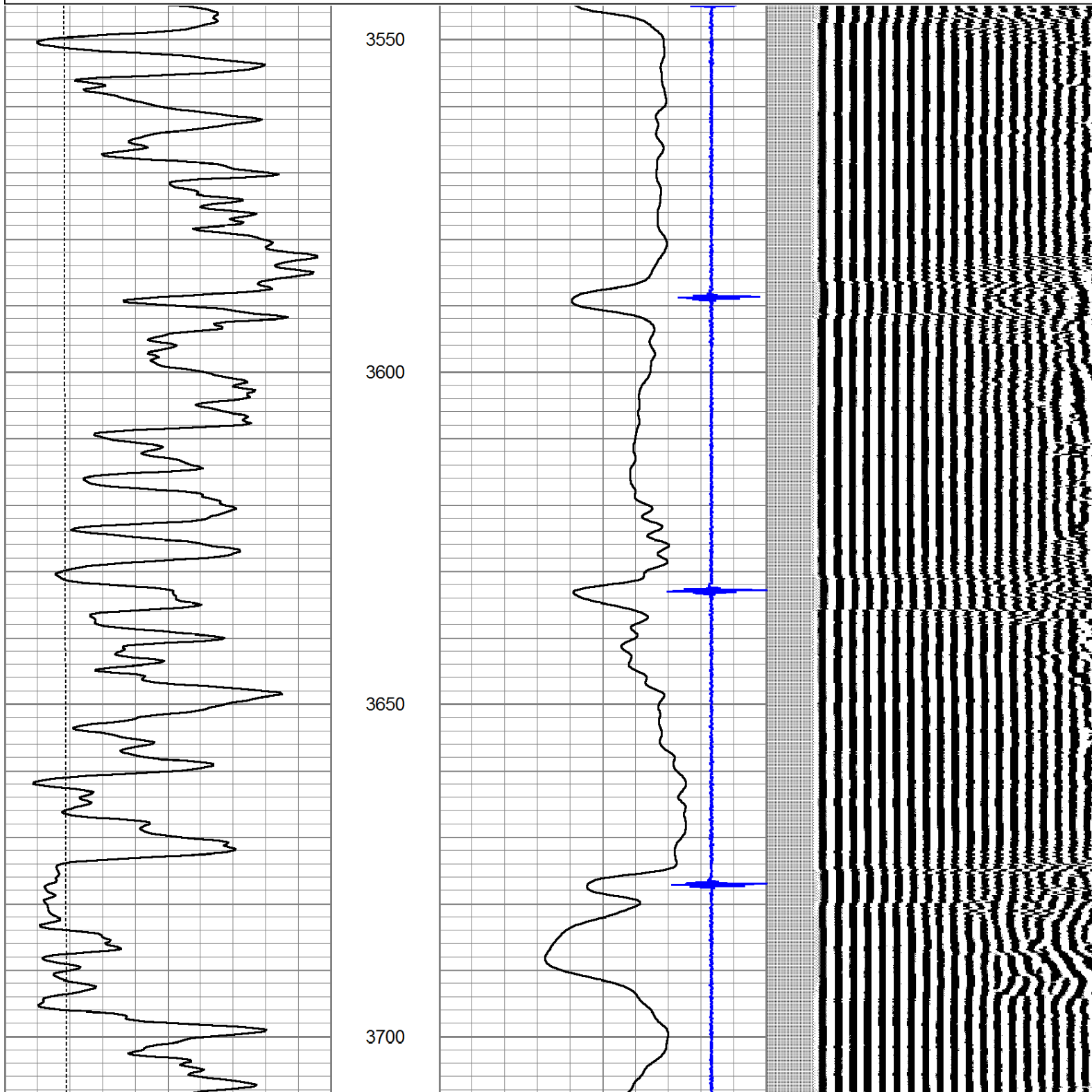


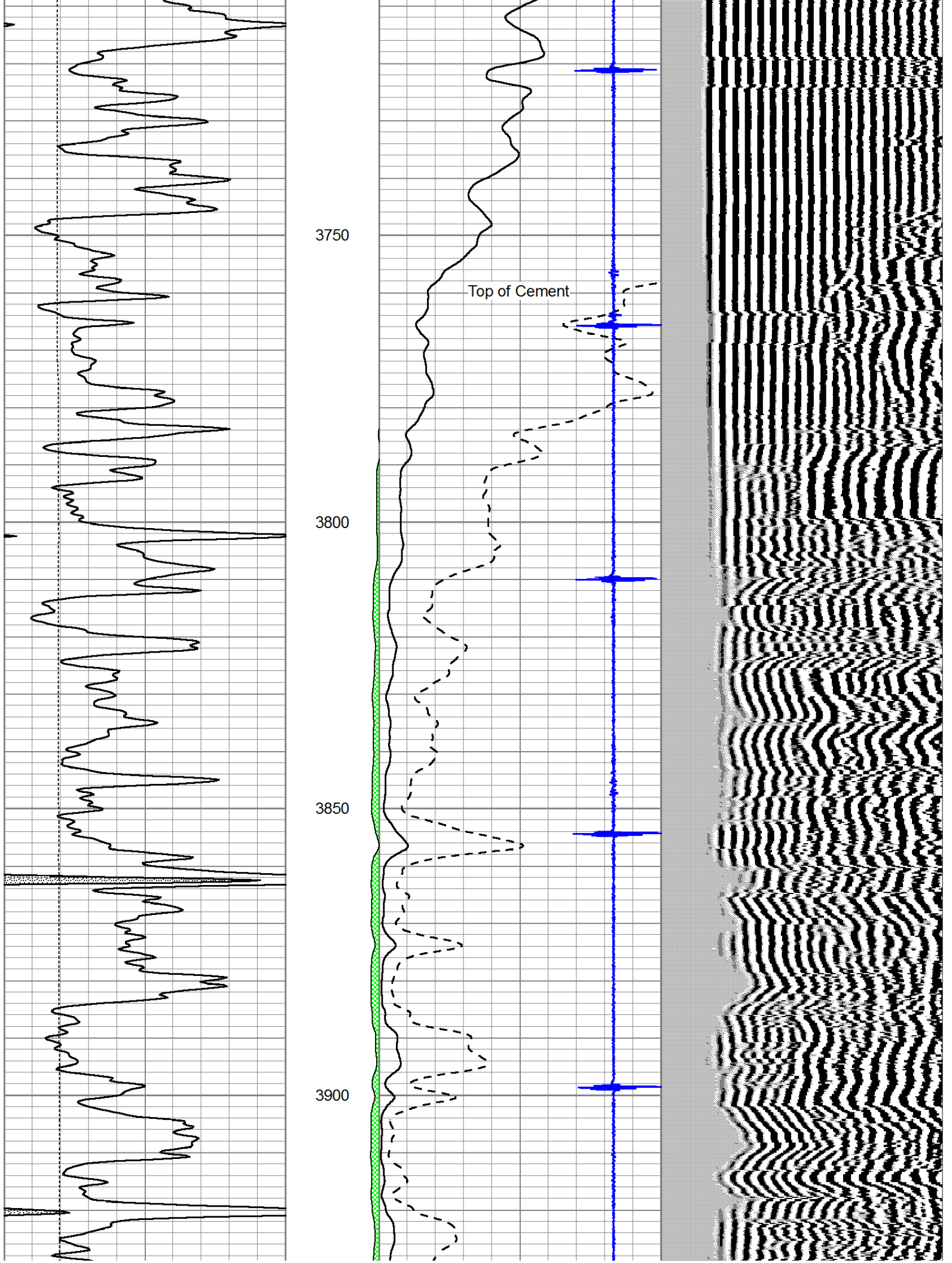
| | | | | | | | | | |
|---|-----------|------|---------|---|--------------------------|-----|-----|------------------|------|
| 0 | GR (GAPI) | 150 | AMP3 | 0 | Amplitude (mV) | 100 | 200 | Variable Density | 1200 |
| 0 | LTEN (lb) | 5000 | (mV) | 0 | Amplified Amplitude (mV) | 20 | | | |
| | | | -100 10 | 5 | Collar Locator | -1 | | | |

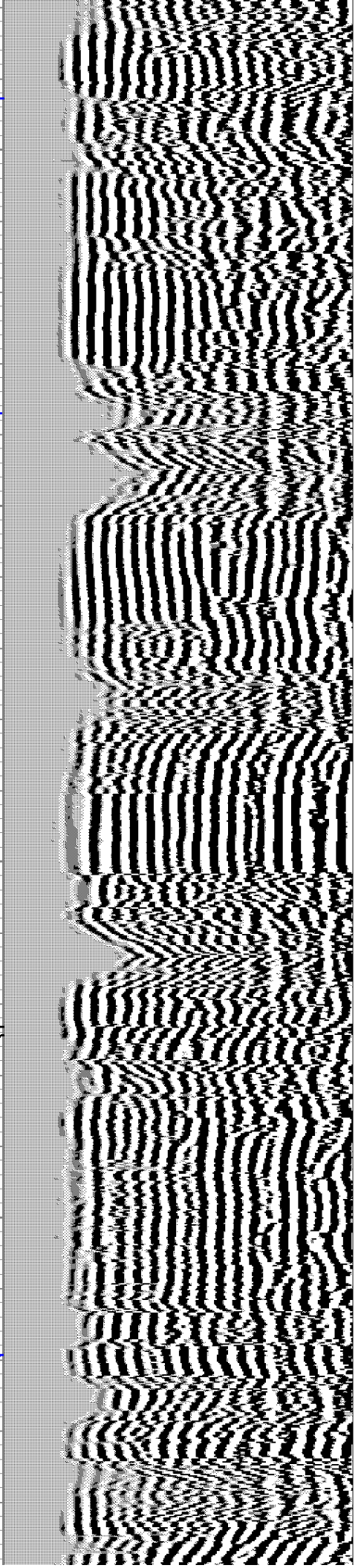
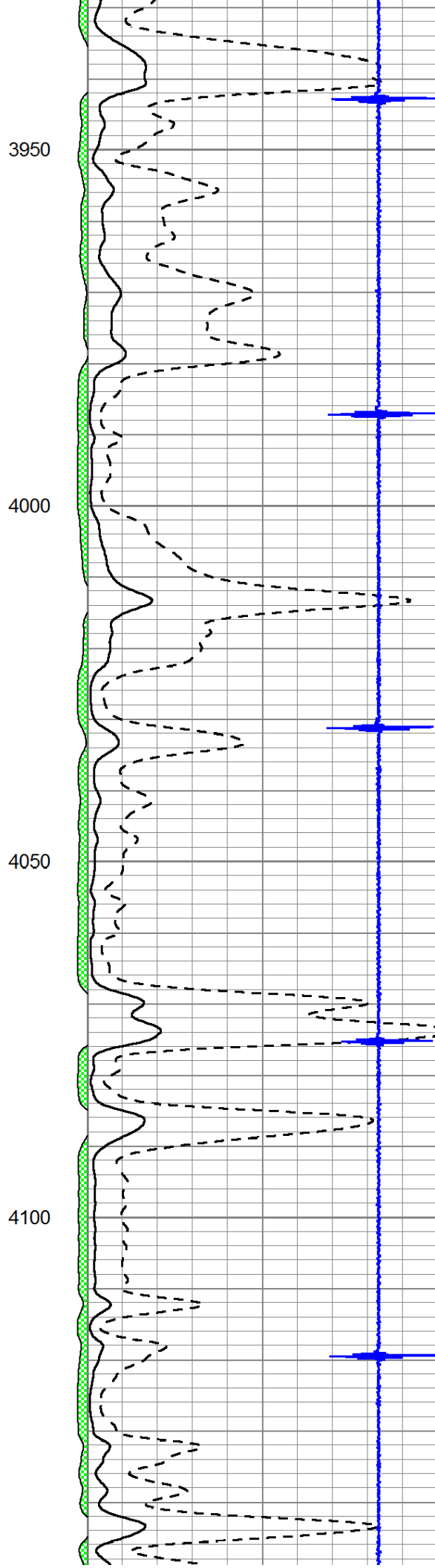
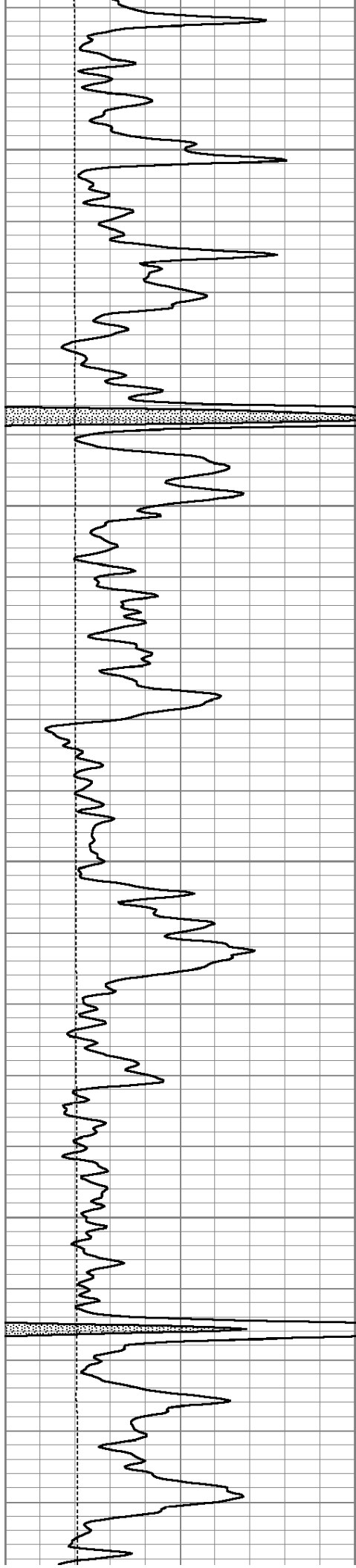
Main Pass

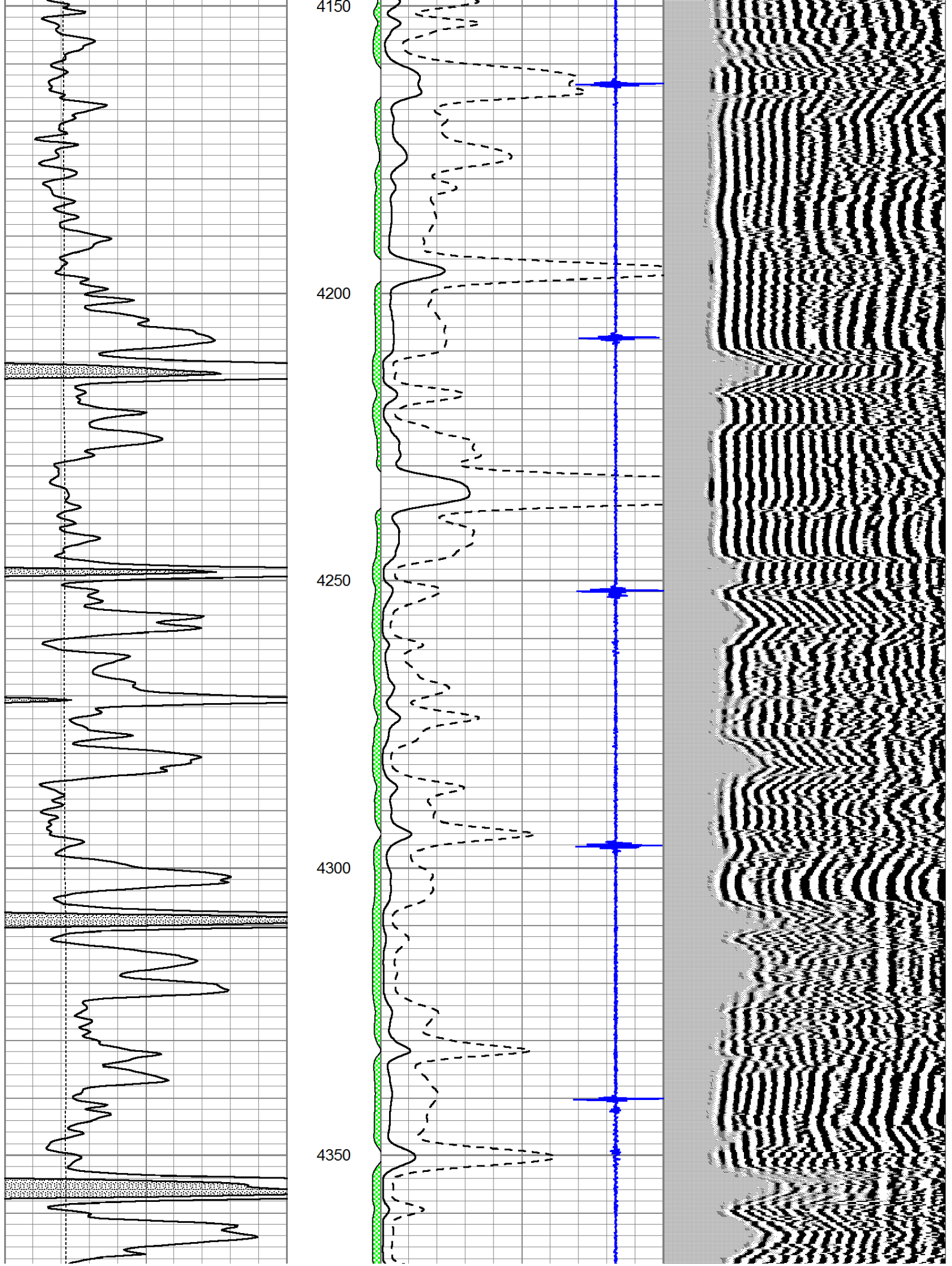
Database File: shake_pence.db
 Dataset Pathname: grcbl/grcbl/pass3.1
 Presentation Format: cldig
 Dataset Creation: Tue Apr 02 12:44:23 2013
 Charted by: Depth in Feet scaled 1:240

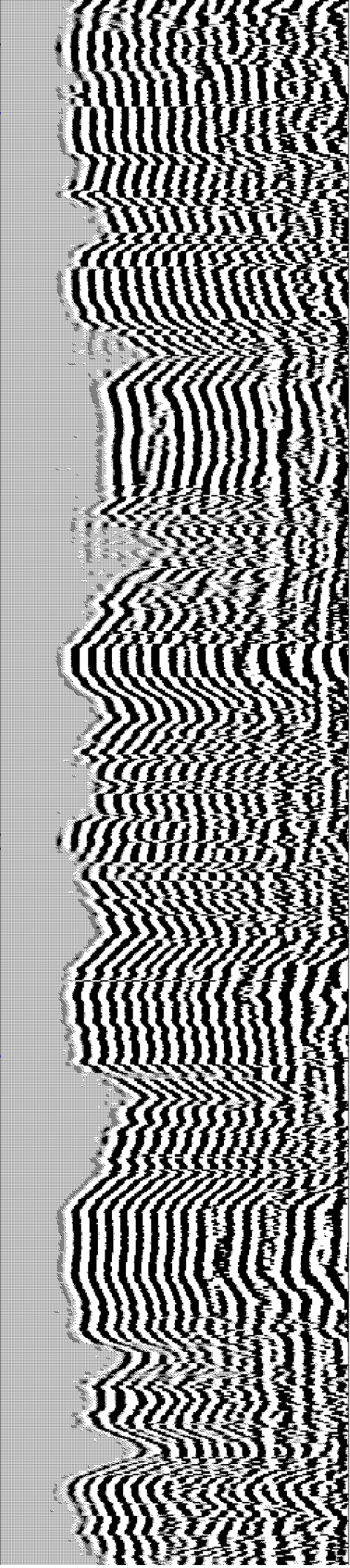
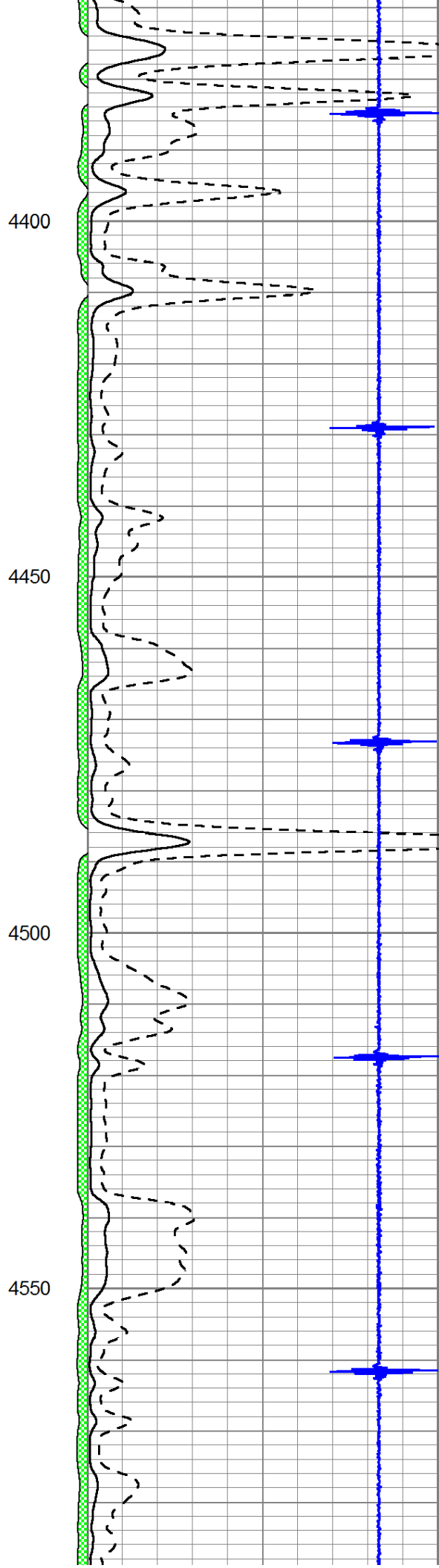
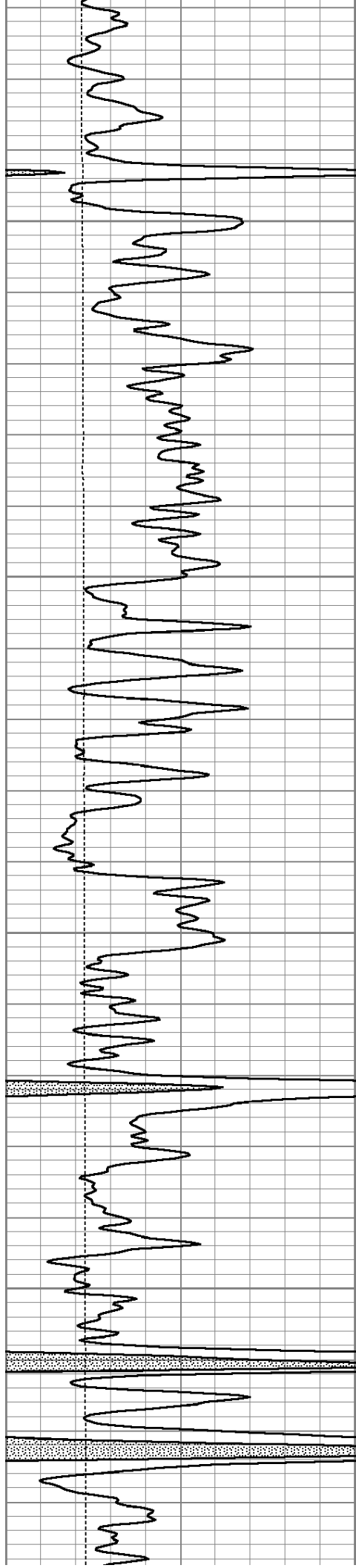
| | | | | | | | | | |
|---|-----------|------|---------|---|--------------------------|-----|-----|------------------|------|
| 0 | GR (GAPI) | 150 | AMP3 | 0 | Amplitude (mV) | 100 | 200 | Variable Density | 1200 |
| 0 | LTEN (lb) | 5000 | (mV) | 0 | Amplified Amplitude (mV) | 20 | | | |
| | | | -100 10 | 5 | Collar Locator | -1 | | | |

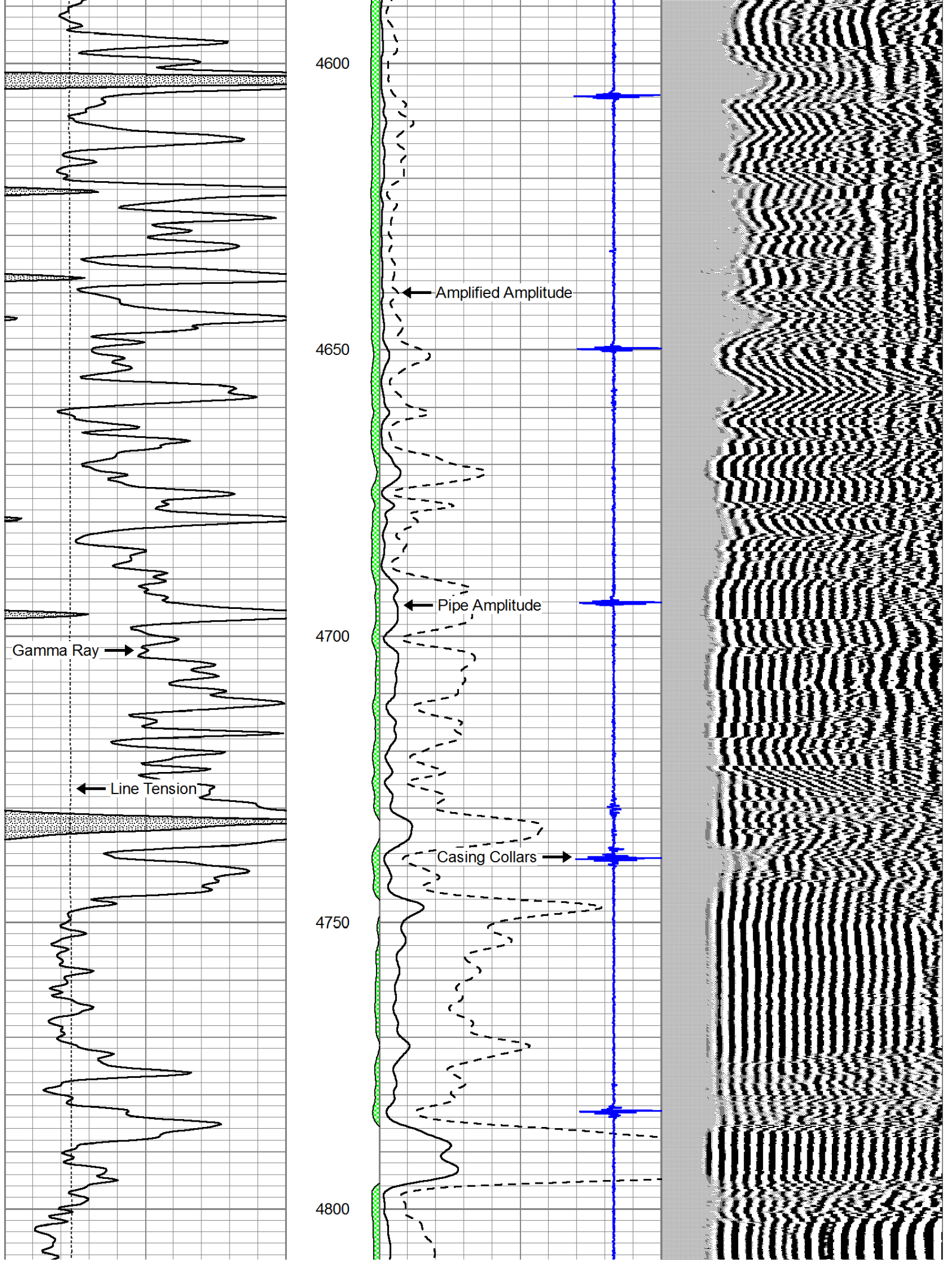


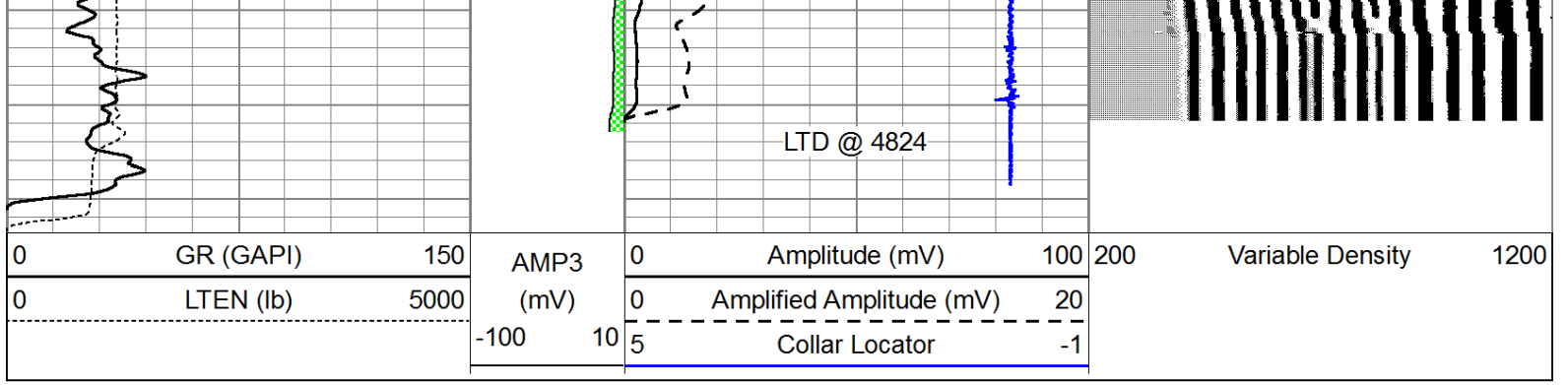












Repeat Section

Database File: shake_pence.db
 Dataset Pathname: grcbl/grcbl/pass2
 Presentation Format: cldig
 Dataset Creation: Tue Apr 02 12:16:42 2013 by Log SCH 111116
 Charted by: Depth in Feet scaled 1:240

