



Pioneer Energy Services

Dual Compensated Porosity Log

API No.	15-101-22,420-00-00	
Company	Larson Engineering, Inc.	
Well	Bockelman No. 2 - 19	
Field	Wildcat	
County	Lane	
Location	SE NW SW NE 1936' FNL & 2132' FEL	
Other Services	DILMEL	
Sec: 19	Twp: 18 S	Rge: 29 W
Permanent Datum	Ground Level	Elevation 2834
Log Measured From	Kelly Bushing	7 Ft. Above Perm. Datum
Drilling Measured From	Kelly Bushing	
Date	2/1/2013	
Run Number	One	
Type Log	CNL / CDL	
Depth Driller	4660	
Depth Logger	4661	
Bottom Logged Interval	4640	
Top Logged Interval	3600	
Type Fluid In Hole	Chemical	
Salinity, PPM CL	3300	
Density	9.2	
Level	Full	
Max. Rec. Temp. F	123	
Operating Rig Time	4 Hours	
Equipment -- Location	108 Hays	
Recorded By	D. Martin	
Witnessed By	Vern Schrag	

Borehole Record				Casing Record			
Run No.	Bit	From	To	Size	Wgt.	From	To
One	12.25	00	259	8.625	23#	00	259
Two	7.875	259	TD				

<<< Fold Here >>>

All interpretations are opinions based on inferences from electrical or other measurements and we cannot and do not guarantee the accuracy or correctness of any interpretation, and we shall not, except in the case of gross or willful negligence on our part, be liable or responsible for any loss, costs, damages, or expenses incurred or sustained by anyone resulting from any interpretation made by any of our officers, agents or employees. These interpretations are also subject to our general terms and conditions set out in our current Price Schedule.

Comments

Thank you for using Log-Tech, Inc.
 (785) 625-3858

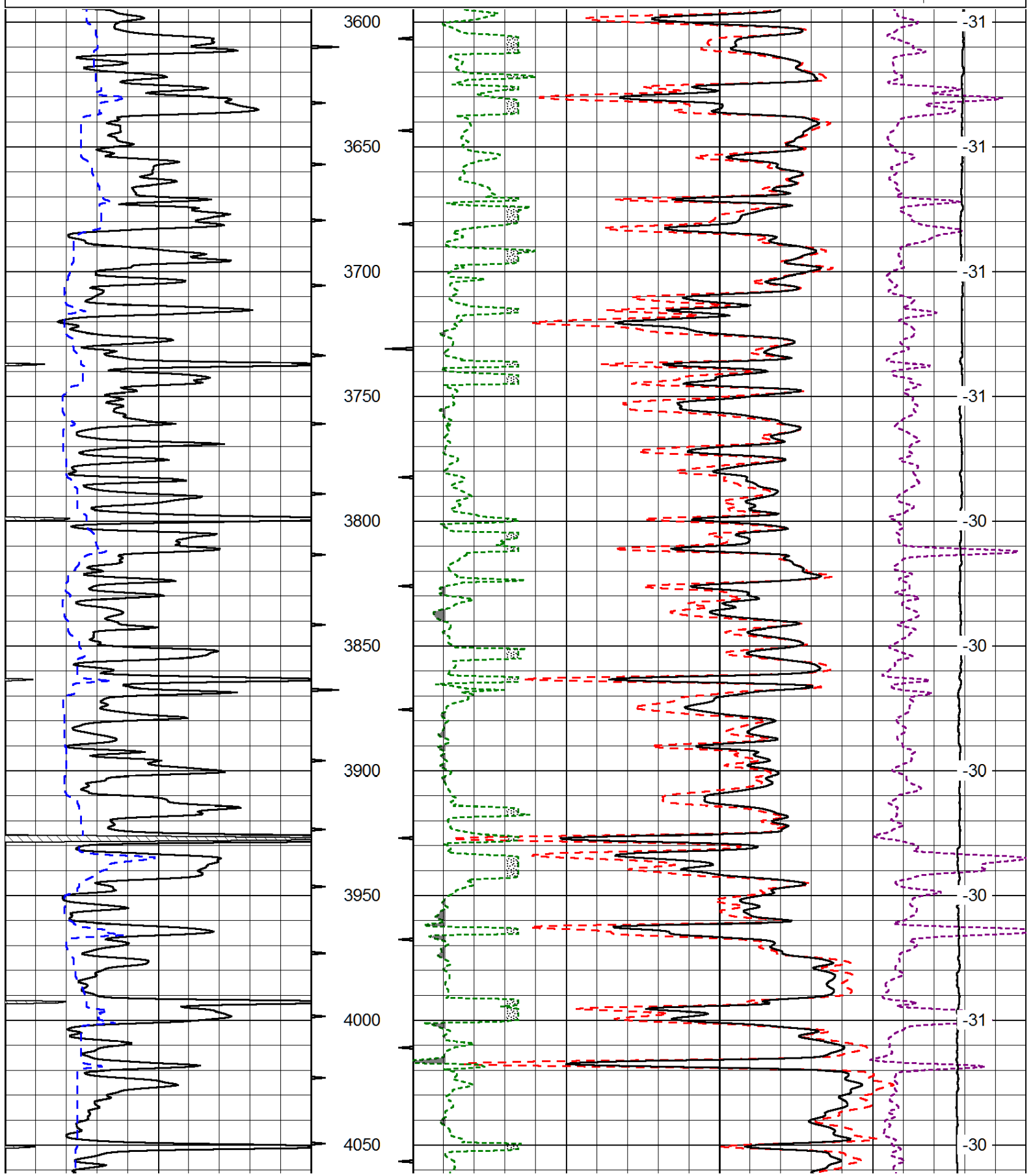
 Dighton, KS
 5 W to Gage Rd., 1/2 S, W Into

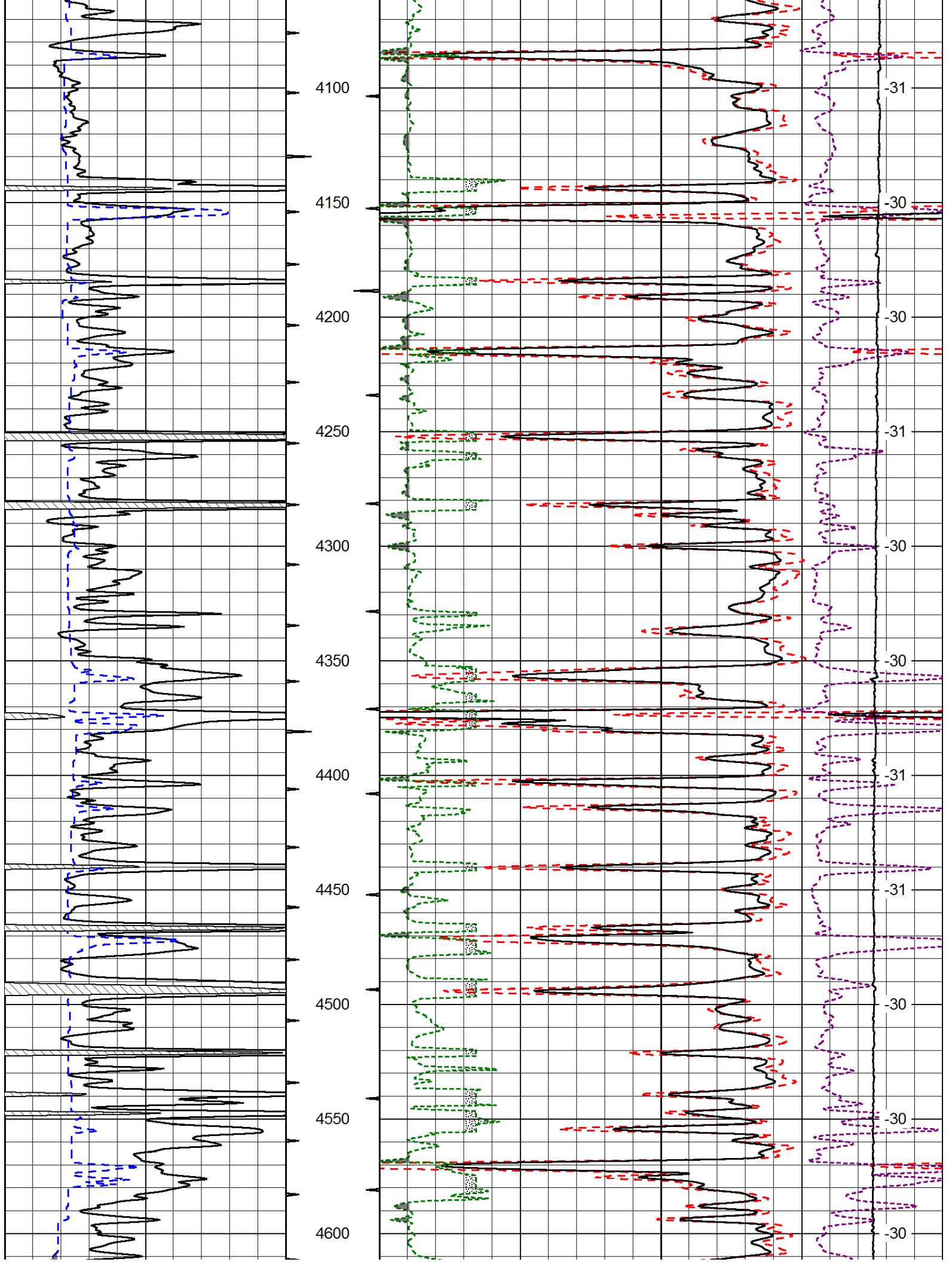
Database File: larshd.db
 Dataset Pathname: DIL/larstk
 Presentation Format: cdl
 Dataset Creation: Fri Feb 01 15:35:01 2013
 Charted by: Depth in Feet scaled 1:600

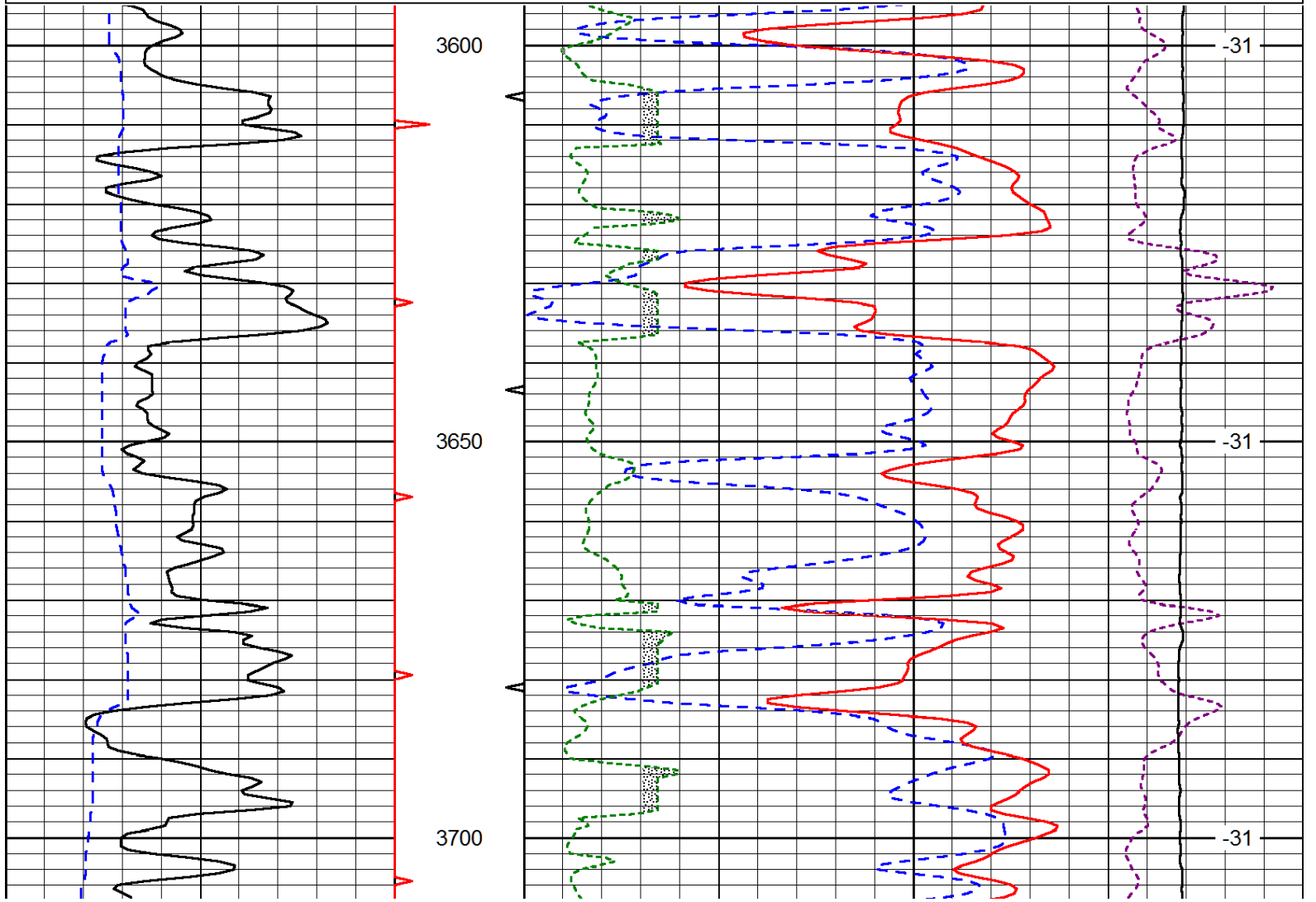
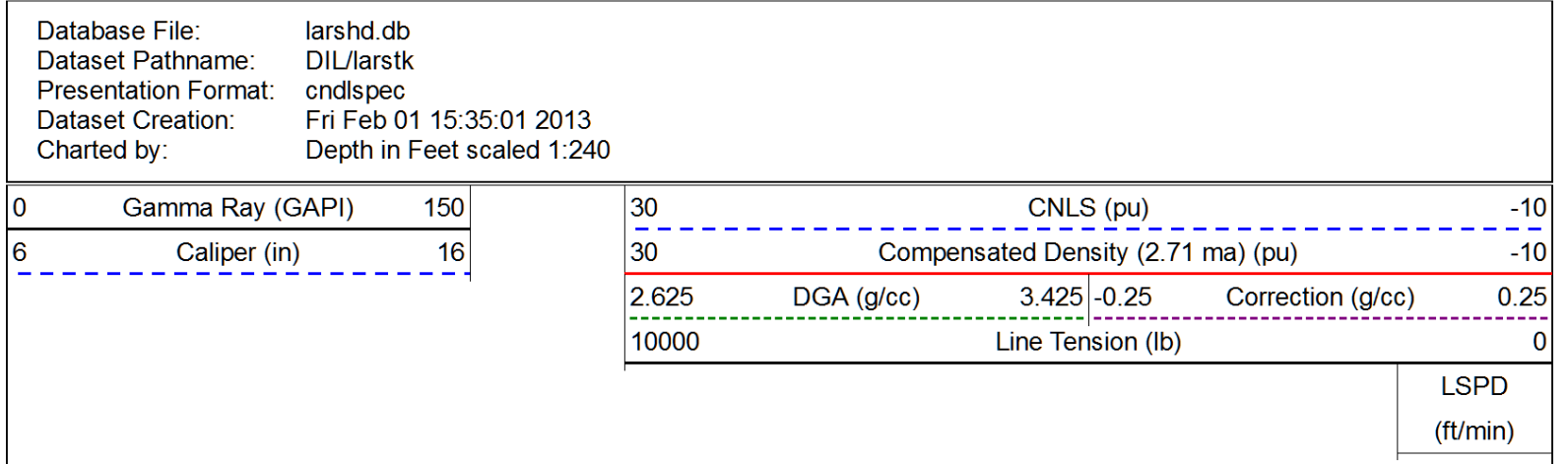
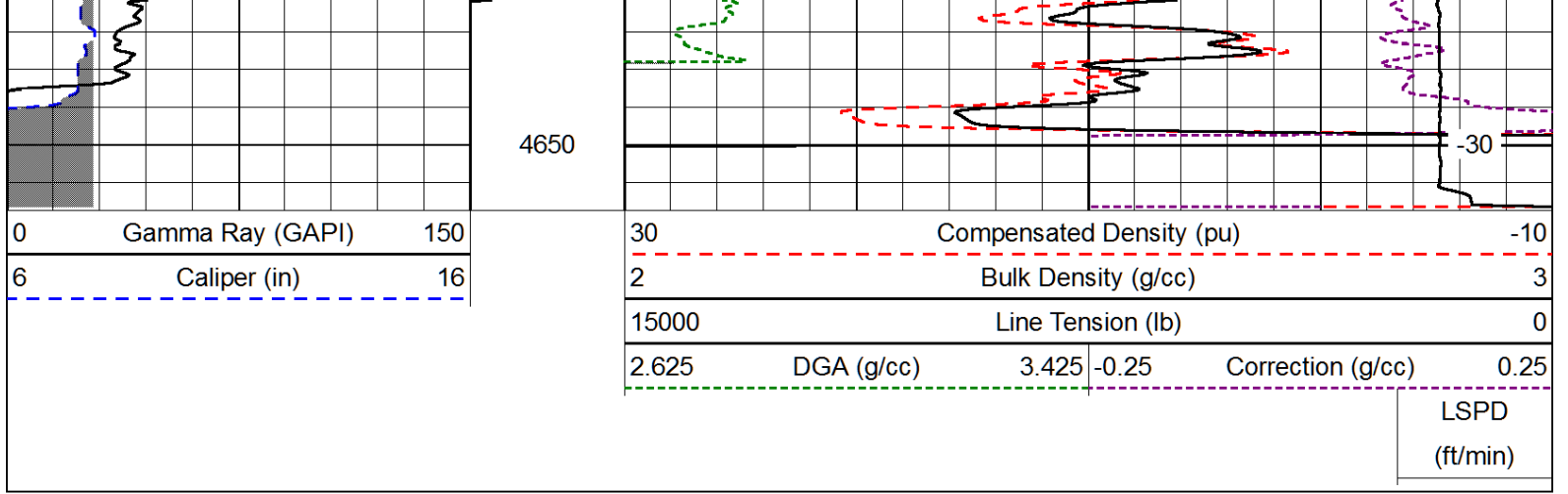
0	Gamma Ray (GAPI)	150
6	Caliper (in)	16

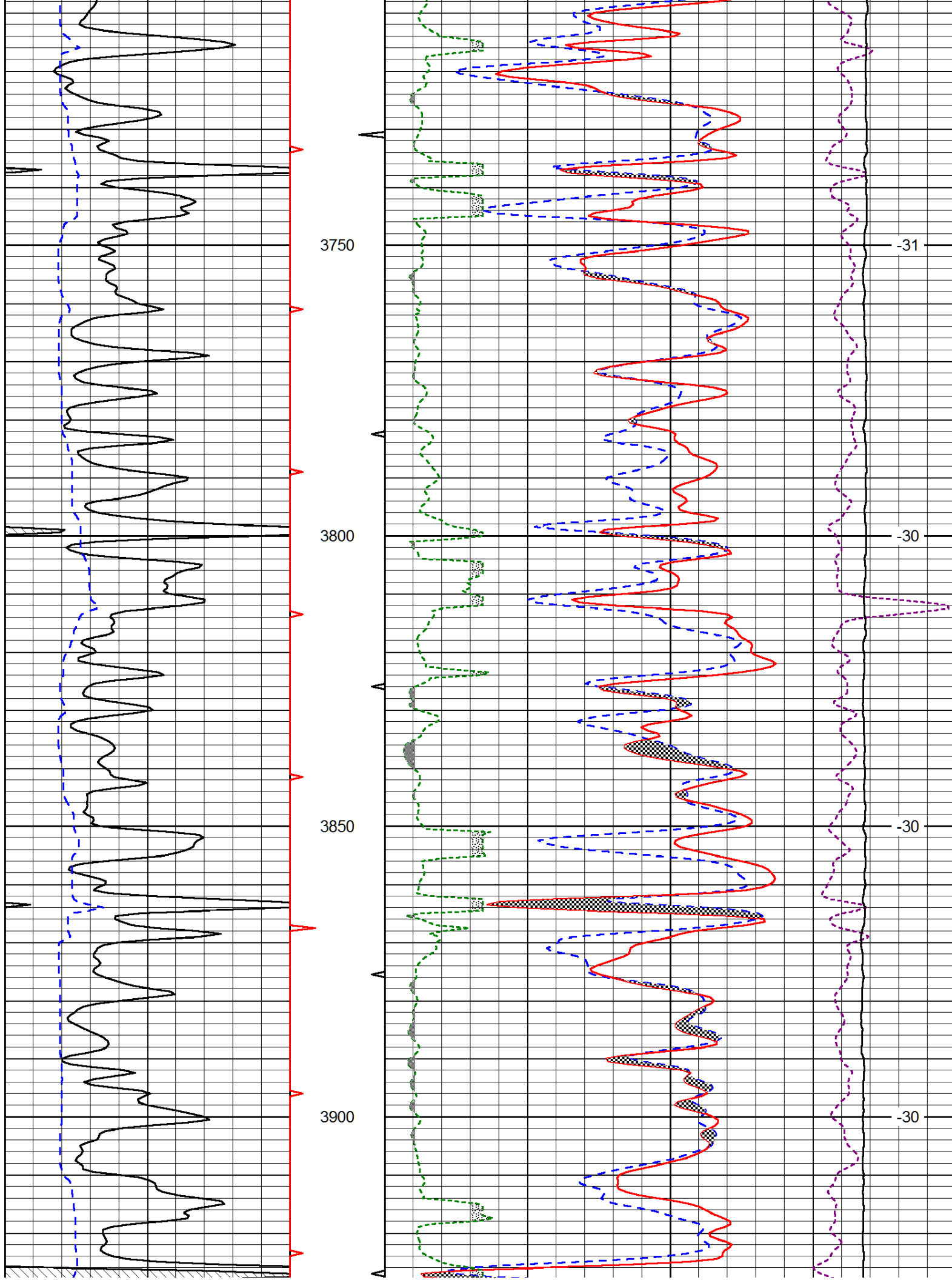
30	Compensated Density (pu)			-10	
2	Bulk Density (g/cc)			3	
15000	Line Tension (lb)			0	
2.625	DGA (g/cc)	3.425	-0.25	Correction (g/cc)	0.25

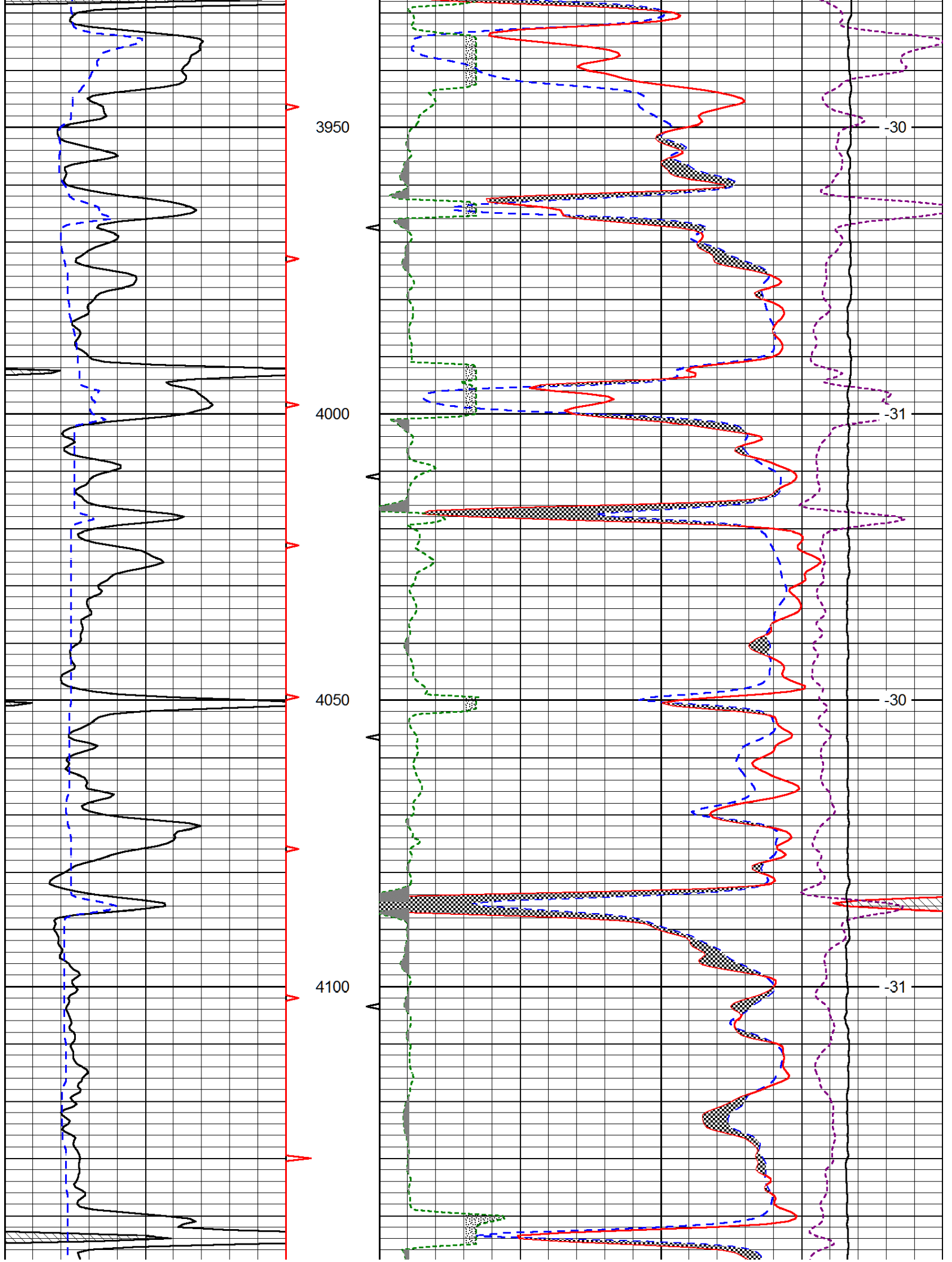
LSPD
(ft/min)

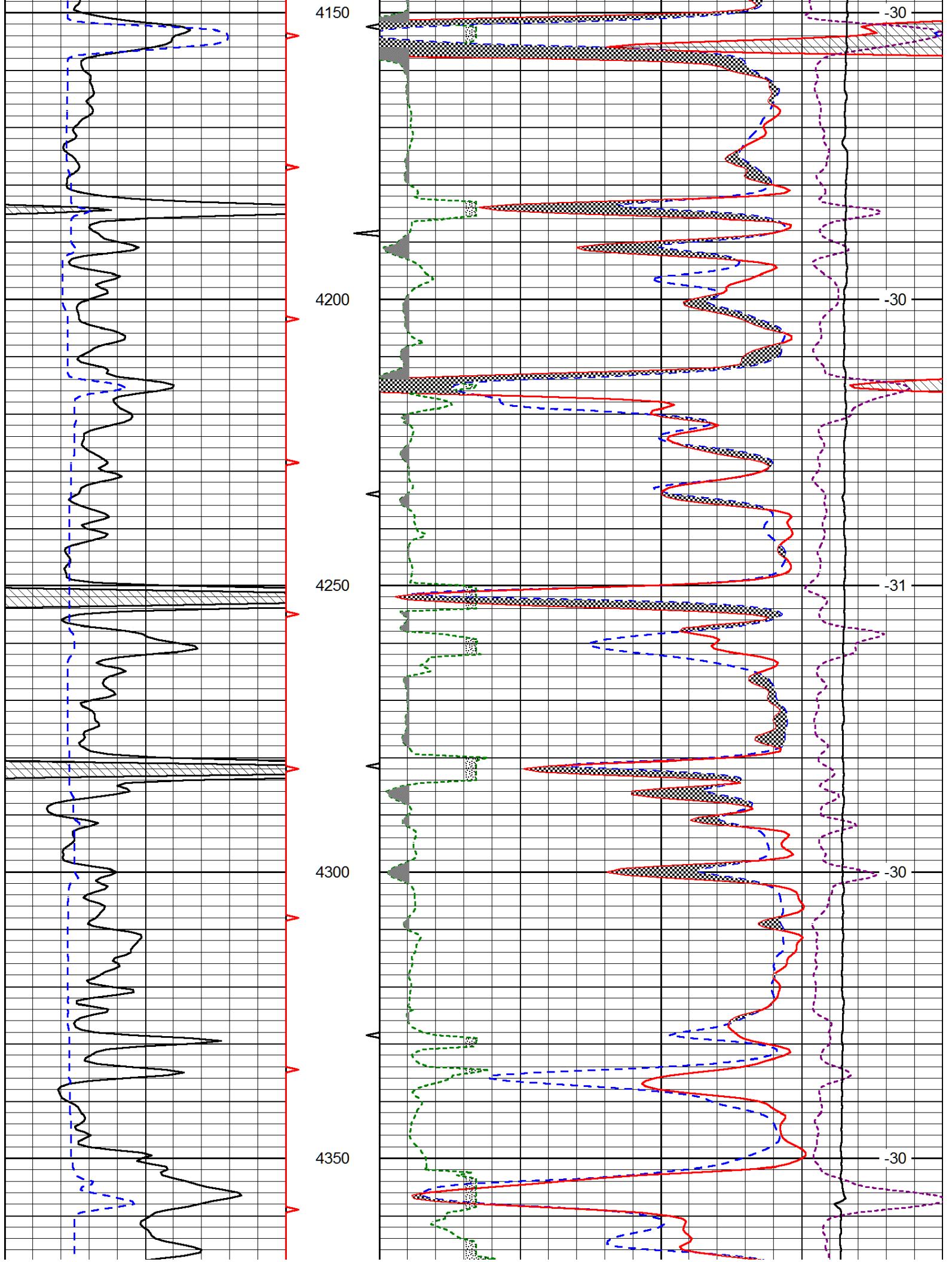


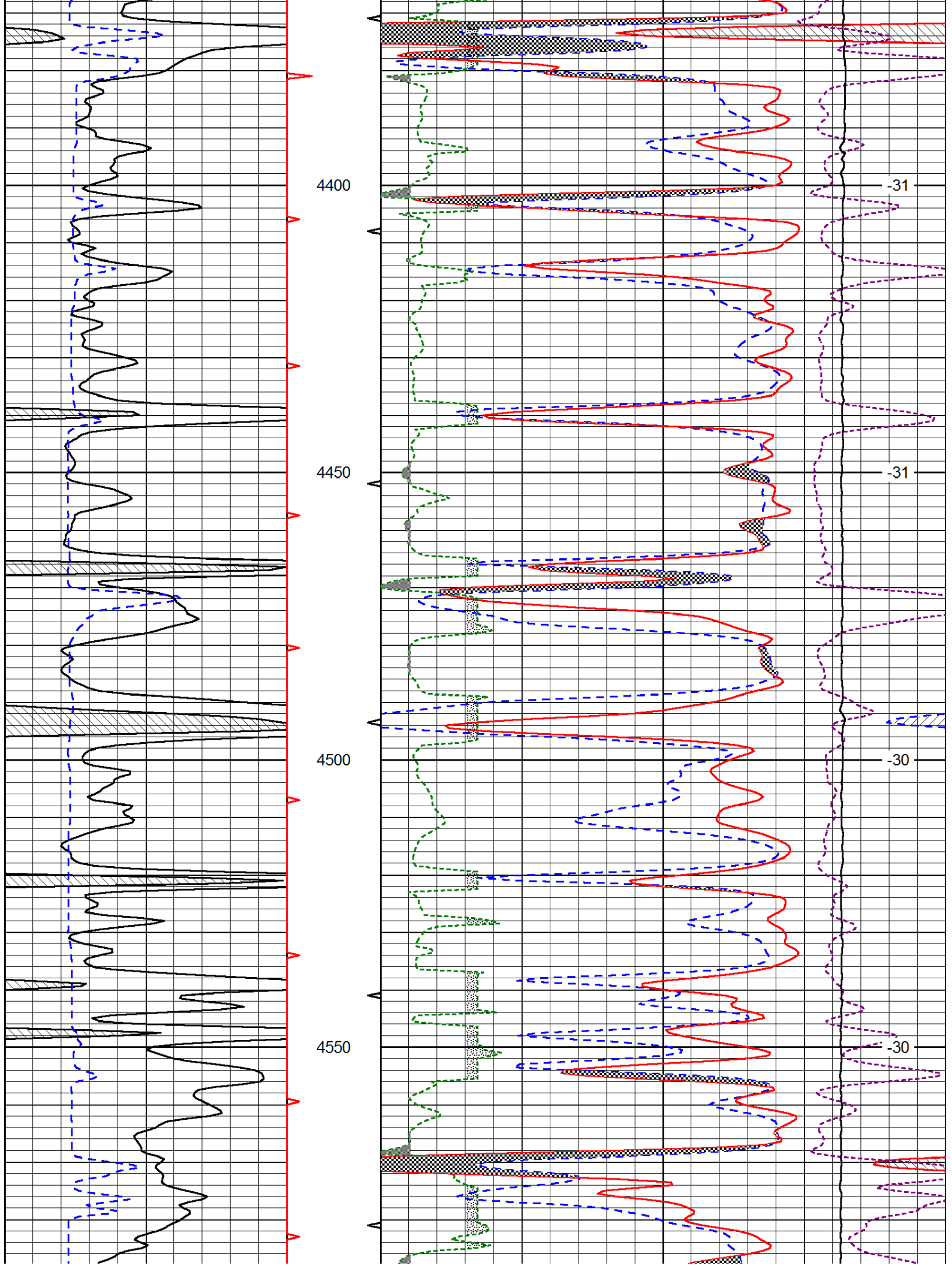


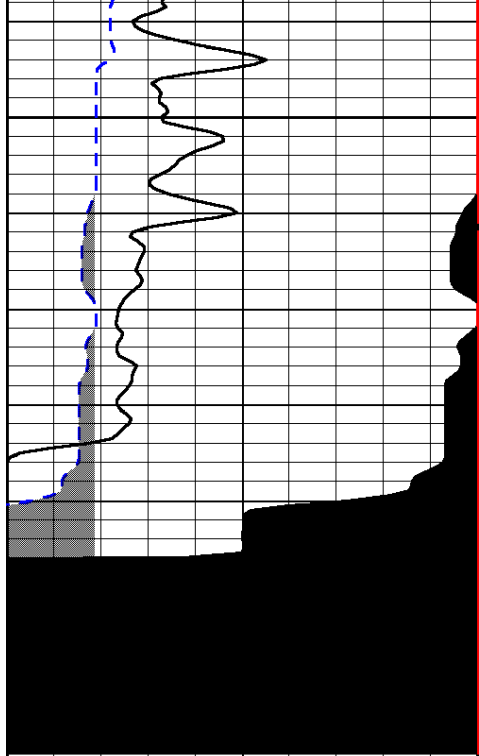






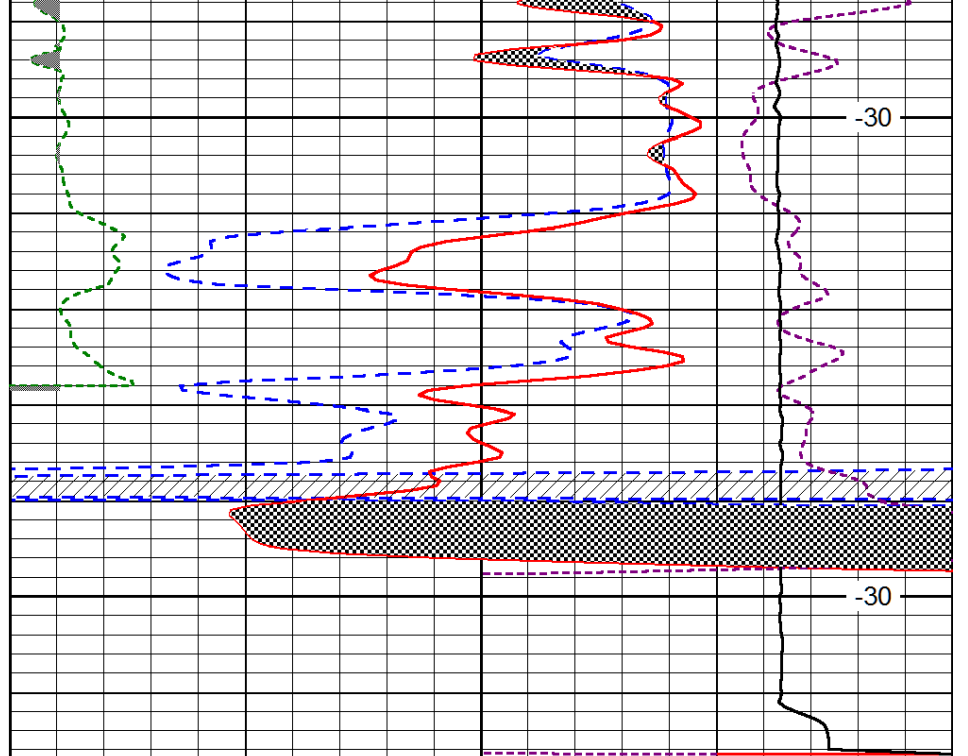






4600

4650



-30

-30

0	Gamma Ray (GAPI)	150
6	Caliper (in)	16

30	CNLS (pu)			-10	
30	Compensated Density (2.71 ma) (pu)			-10	
2.625	DGA (g/cc)	3.425	-0.25	Correction (g/cc)	0.25
10000	Line Tension (lb)			0	

LSPD
(ft/min)