



**MIDWEST SURVEYS**  
 LOGGING - PERFORATING - CONSULTING SERVICES  
 P.O. Box 88, Osawatomie, KS 66064  
 913.755-2428

**GAMMA RAY / NEUTRON / CCL**

File No.

Company **Diamond "B" Miami Flood LTD**

Well **Tarr I No. D-11**

Field **Paola - Rantoul**

County **Miami** State **Kansas**

Location **960 FSL & 1783 FWL**

**SE-NW-SE-SW**

Other Services  
 Perforate

Sec. 19 Twp. 16S Rge. 22E  
 Permanent Datum GL Elevation NA  
 Log Measured From GL  
 Drilling Measured From GL

Elevation  
 K.B. NA  
 D.F. NA  
 G.L. NA

Date **03-30-2013**

Run Number **One**

Depth Driller **700.0**

Depth Logger **687.0**

Bottom Logged Interval **686.0**

Top Log Interval **20.0**

Fluid Level **Full**

Type Fluid **Water**

Density / Viscosity **NA**

Salinity - PPM Cl **NA**

Max. Recorded Temp **NA**

Estimated Cement Top **0.0**

Equipment No. **107** Location **Osawatomie**

Recorded By **Steve Windisch**

Witnessed By **Jim Farley**

BORE-HOLE RECORD				CASING RECORD			
RUN No.	BIT FROM	TO	SIZE	WGHT	FROM	TO	
One	9.875"	0.0	20.0	7.00"	17.0#	0.0	20.0
Two	5.625"	20.0	700.0	2.875"	6.5#	0.0	691.2

<<< Fold Here >>>

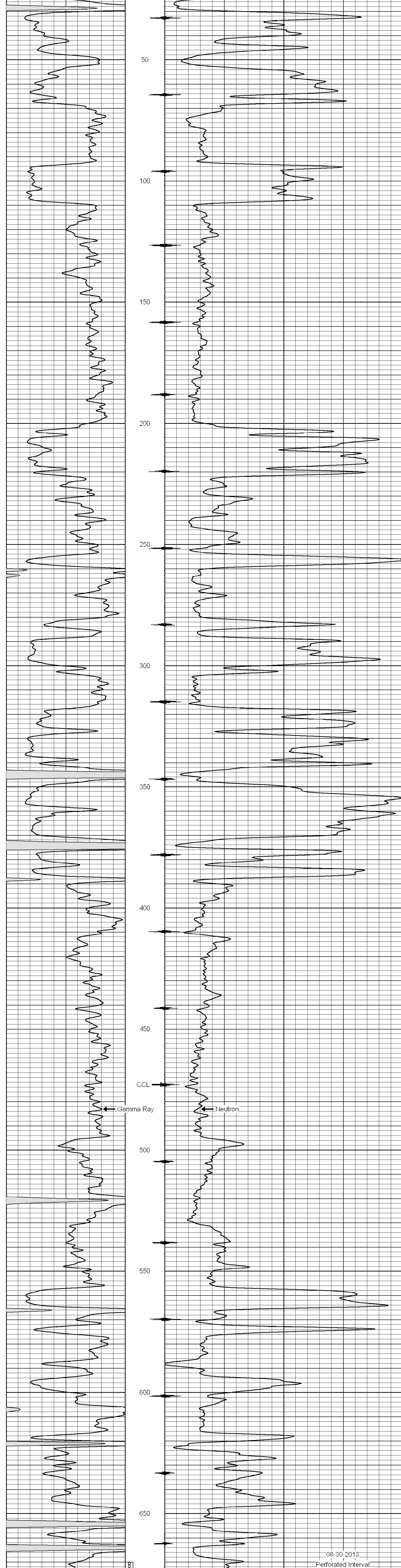
All interpretations are opinions based on inferences from electrical or other measurements and we cannot and do not guarantee the accuracy or correctness of any interpretation, and we shall not, except in the case of gross or willful negligence on our part, be liable or responsible for any loss, costs, damages, or expenses incurred or sustained by anyone resulting from any interpretation made by any of our officers, agents or employees. These interpretations are also subject to our general terms and conditions set out in our current Price Schedule.

**Comments**

Drilling Contractor :  
**Dale Jackson Production Company**

Database File: **tarr1d11.db**  
 Dataset Pathname: **pass1**  
 Presentation Format: **gr-n-ccl**  
 Dataset Creation: **Fri Aug 30 10:10:12 2013 by Log SCH 111116**  
 Charted by: **Depth in Feet scaled 1:240**

0	Gamma Ray (cps)	150	-1 CCL 1	10	Neutron (cps)	2100
150	Gamma Ray (cps)	300				



08-30-2013  
 Perforated Interval  
 670.0 - 678.0 25 Perfs  
 2" DML RTG

0	Gamma Ray (cps)	150	-1 CCL 1	10	Neutron (cps)	2100
150	Gamma Ray (cps)	300				