



MIDWEST SURVEYS
 LOGGING - PERFORATING - CONSULTING SERVICES
 P.O. Box 68, Osawatomie, KS 66064
 913 / 755 - 2128

GAMMA RAY / NEUTRON / CCL

File No.

Company **Jay M. Schendel**

Well **L. Schendel No. L-26**

Field **Paola - Rantoul**

County **Miami** State **Kansas**

Location **4440' FSU & 4592' FEL**

NW-SE:NW-NW

Other Services
 Perforate

Sec. 24	Typ	10s	Eye	21e	Elevation	N/A
Perforant Depth	Log	GL	GL	GL	K.B.	NA
Drilling Measured From	GL	GL	GL	GL	D.F.	NA
					GL	NA

Date **05-10-2013**

Run Number **One**

Depth Drier **756.0**

Depth Logger **721.0**

Bottom Logged Interval **720.0**

Top Log Interval **20.0**

Fluid Level **Full**

Type Fluid	Water
Density / Viscosity	NA
Salinity - PPM Cl	NA
Max Recorded Temp	NA
Estimated Cement Top	0.0
Equipment No.	107
Location	Osawatomie
Recorded By	Steve Wandisch
Witnessed By	Jay Schendel

BORE-HOLE RECORD		CASING RECORD					
Run No.	BIT	FROM	TO	SIZE	WGT.	FROM	TO
One	9.875"	0.0	20.0	7.00"	17.0#	0.0	20.0
Two	5.625"	20.0	758.0	2.875"	6.5#	0.0	731.0

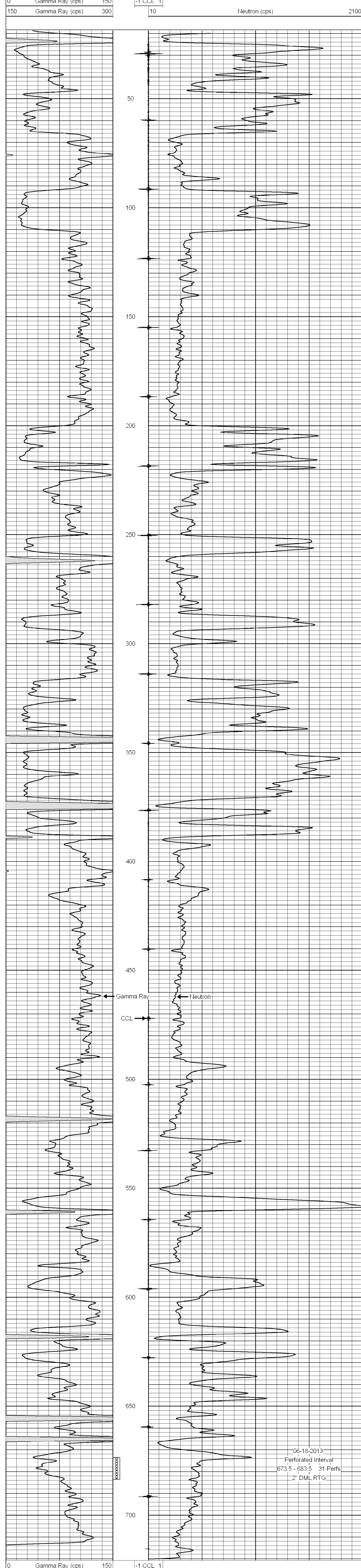
<<< Fold Here >>>

All interpretations are opinions based on inferences from electrical or other measurements and we cannot and do not guarantee the accuracy or correctness of any interpretation, and we shall not, except in the case of gross or willful negligence on our part, be liable or responsible for any loss, costs, damages, or expenses incurred or sustained by anyone resulting from any interpretation made by any of our officers, agents or employees. These interpretations are also subject to our general terms and conditions set out in our current Price Schedule.

Comments

Drilling Contractor :
JTC Oil, Inc

Database File: schendel26l.db
 Dataset Pathname: pass1
 Presentation Format: gr-n-ccl
 Dataset Creation: Mon Jun 10 14:35:11 2013 by Log SCH 111116
 Charted by: Depth in Feet scaled 1:240



06-18-2013
 Perforated Interval
 673.5 - 683.5 31 Perfs
 2" DML RTG