



**GAMMA RAY
NEUTRON
COMPLETION LOG**

Company: **KRAFT OIL, LLC**
Well: **SCHNEIDER - HANNEN #11**
Field: **VIRGIL NORTH**
County: **GREENWOOD** State: **KANSAS**

Location: 1200' FSL & 600' FEL
API #: 15-07324194-00-00
SEC 9 TWP 23S RGE 13E
Log Measured From: G.L.
Drilling Measured From: G.L.
Elevation: 11785' KB
Elevation: G.L. EST.

Date: 10-17-2013
Run Number: 1-NEWWELL
Depth Driver: 1807
Depth Logger: 1825.7

Top Log Interval: SURFACE
Bottom Logged Interval: FULL
Fluid Level: WATER

Type Fluid: WATER
Production Casing: 4" @
Max. Recorded Temp: @
Estimated Cement Top: @
Calculated Cement Top: @
Amount & Type Cement: @
Drilling Contractor: SKYY DRILLING
Equipment Number: 107

Location: UGEN D
Witnessed By: KRAFT, A

Recorded By: KRAFT, A

Company: KRAFT OIL, LLC
Well: SCHNEIDER - HANNEN #11
Field: VIRGIL NORTH
County: GREENWOOD State: KANSAS

Date: 10-17-2013
Run Number: 1-NEWWELL
Depth Driver: 1807
Depth Logger: 1825.7

Top Log Interval: SURFACE
Bottom Logged Interval: FULL
Fluid Level: WATER

<<< Fold Here >>>

All interpretations are opinions based on inferences from electrical or other measurements and we cannot and do not guarantee the accuracy or correctness of any interpretation, and we shall not, except in the case of gross or willful negligence on our part, be liable or responsible for any loss, costs, damages, or expenses incurred or sustained by anyone resulting from any interpretation made by any of our officers, agents or employees. These interpretations are also subject to our general terms and conditions set out in our current Price Schedule.

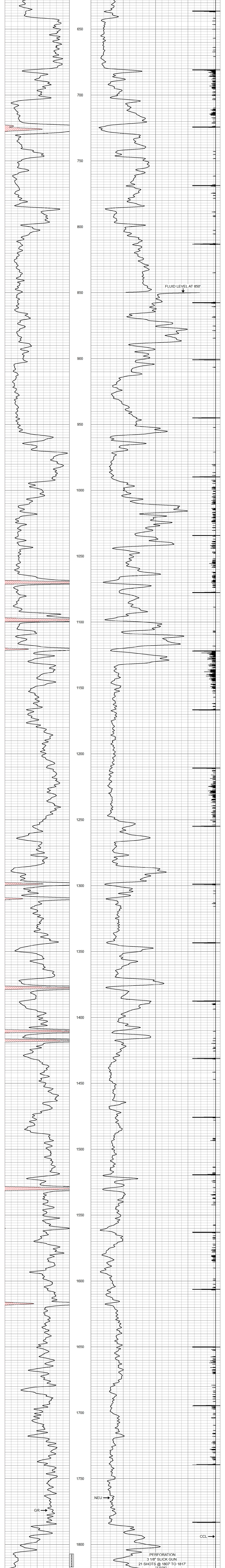
Comments

THANK YOU

Sensor	Offset (ft)	Schematic	Description	Len (ft)	OD (in)	Wt (lb)
GR	7.59		GR-TITAN_169 (TIT169_001) Titan 1 11/16" Gamma Ray	4.75	1.69	20.00
CCL	5.05		CCL-TITAN_169 (TIT169) Titan 1 11/16" Logging CCL	1.83	1.69	7.50
NEU	0.63		NEU-TITAN_169 (TIT169_001) Titan 1 11/16" Neutron	4.33	1.69	20.00

Dataset: schneider - hannen #11.db: field/well/run1/pass2
Total Length: 10.92 ft
Total Weight: 47.50 lb
O.D.: 1.69 in

0	GR	150	750	NEU	3500
150	gr	300		13	CCL



0	GR	150	100	NEU	1500
150	gr	300		13	CCL