



**COMPLETION
& PRODUCTION
SERVICES CO.**

**MICRO
LOG**

Company CORAL COAST PETROLEUM, L.C.
Well STEPHENS #7
Field MORRISON NORTHEAST
County CLARK
State KANSAS

Company CORAL COAST PETROLEUM, L.C.
Well STEPHENS #7
Field MORRISON NORTHEAST
County CLARK State KANSAS

Location: API # : 15-025-21554-0000
2200' FNL & 1393' FWL
SEC 15 TWP 32S RGE 21W
Permanent Datum GROUND LEVEL Elevation 2034
Log Measured From KELLY BUSHING 10' A.G.L.
Drilling Measured From KELLY BUSHING
Other Services
CDL/CNL/PE
DIL/SONIC
Elevation
K.B. 2044
D.F. 2042
G.L. 2034

Date	1/24/13
Run Number	TWO
Depth Driller	6607
Depth Logger	6610
Bottom Logged Interval	6588
Top Log Interval	4100
Casing Driller	8 5/8"@602'
Casing Logger	602
Bit Size	7 7/8"
Type Fluid in Hole	CHEMICAL MUD
Density / Viscosity	9.1/46
pH / Fluid Loss	10.0/10.8
Source of Sample	FLOWLINE
Rim @ Meas. Temp	.580@82F
Rmf @ Meas. Temp	.435@82F
Rmc @ Meas. Temp	.696@82F
Source of Rmf / Rmc	MEASUREMENT
Rim @ BHT	.340@140F
Time Circulation Stopped	6 HOURS
Time Logger on Bottom	9:00 A.M.
Maximum Recorded Temperature	140F
Equipment Number	4854
Location	HAYS, KANSAS
Recorded By	JEFF LUEBBERS
Witnessed By	KEITH REAVIS

<<< Fold Here >>>

All interpretations are opinions based on inferences from electrical or other measurements and we cannot and do not guarantee the accuracy or correctness of any interpretation, and we shall not, except in the case of gross or willful negligence on our part, be liable or responsible for any loss, costs, damages, or expenses incurred or sustained by anyone resulting from any interpretation made by any of our officers, agents or employees. These interpretations are also subject to our general terms and conditions set out in our current Price Schedule.

Comments

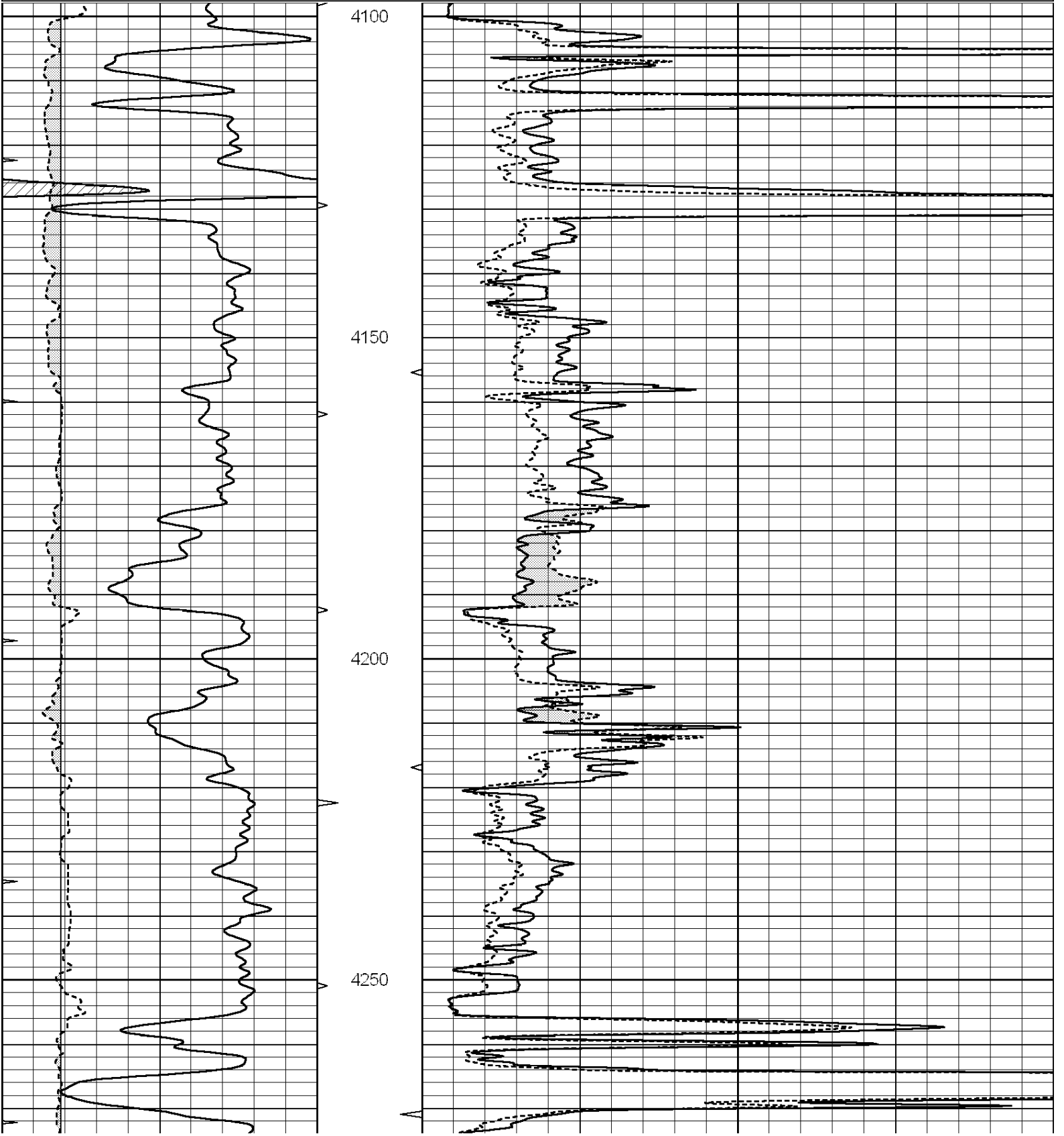
THANK YOU FOR USING "NABORS" HAYS, KANSAS (785) 628-6395
DIRECTIONS
PROTECTION, KS. 7W. ON HWY 160 TO "RD. 30", 4N. INTO PASTURE, 1/2 W. ON TRAIL, THEN CURVE
AROUND N. & E.

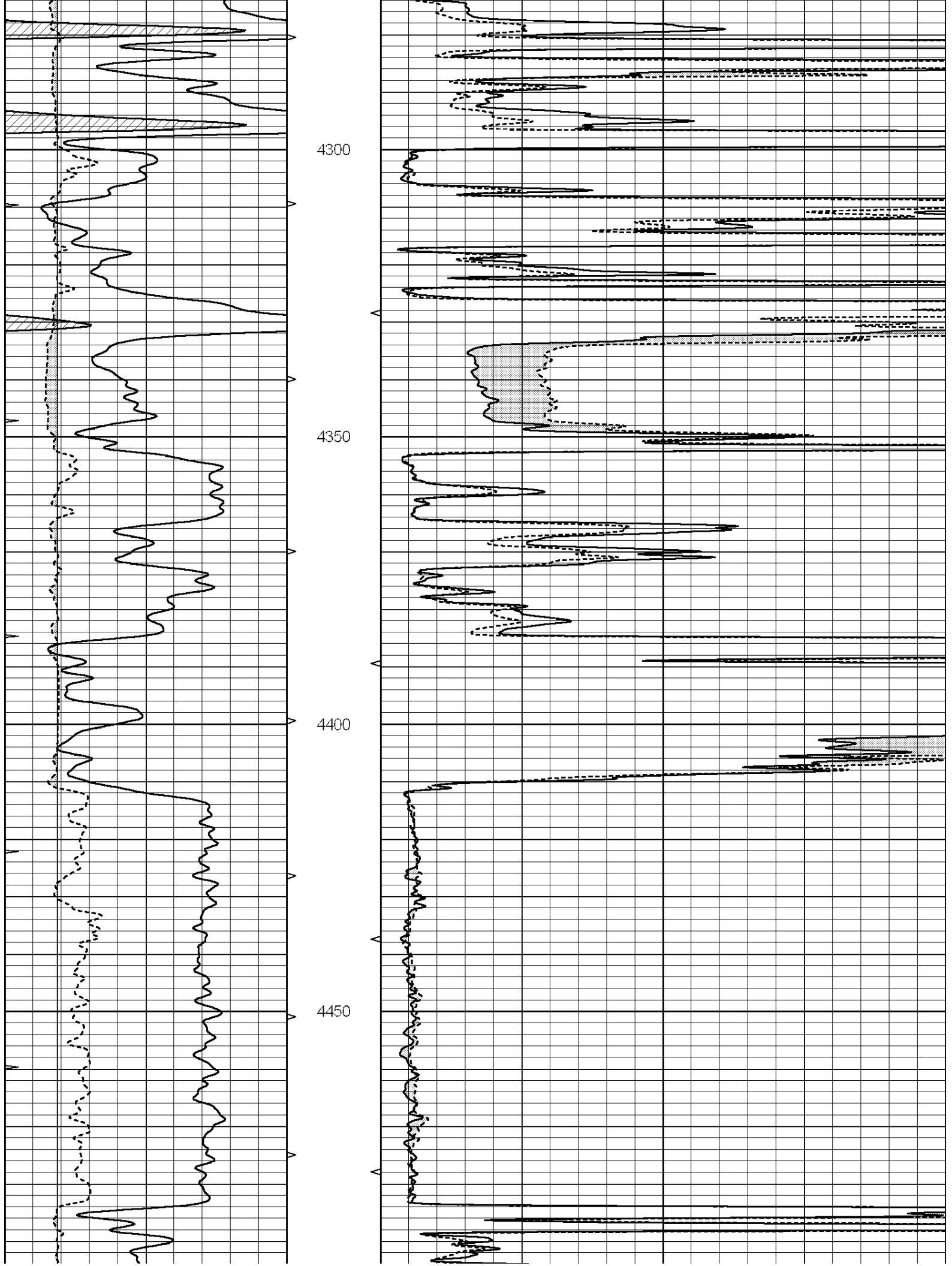


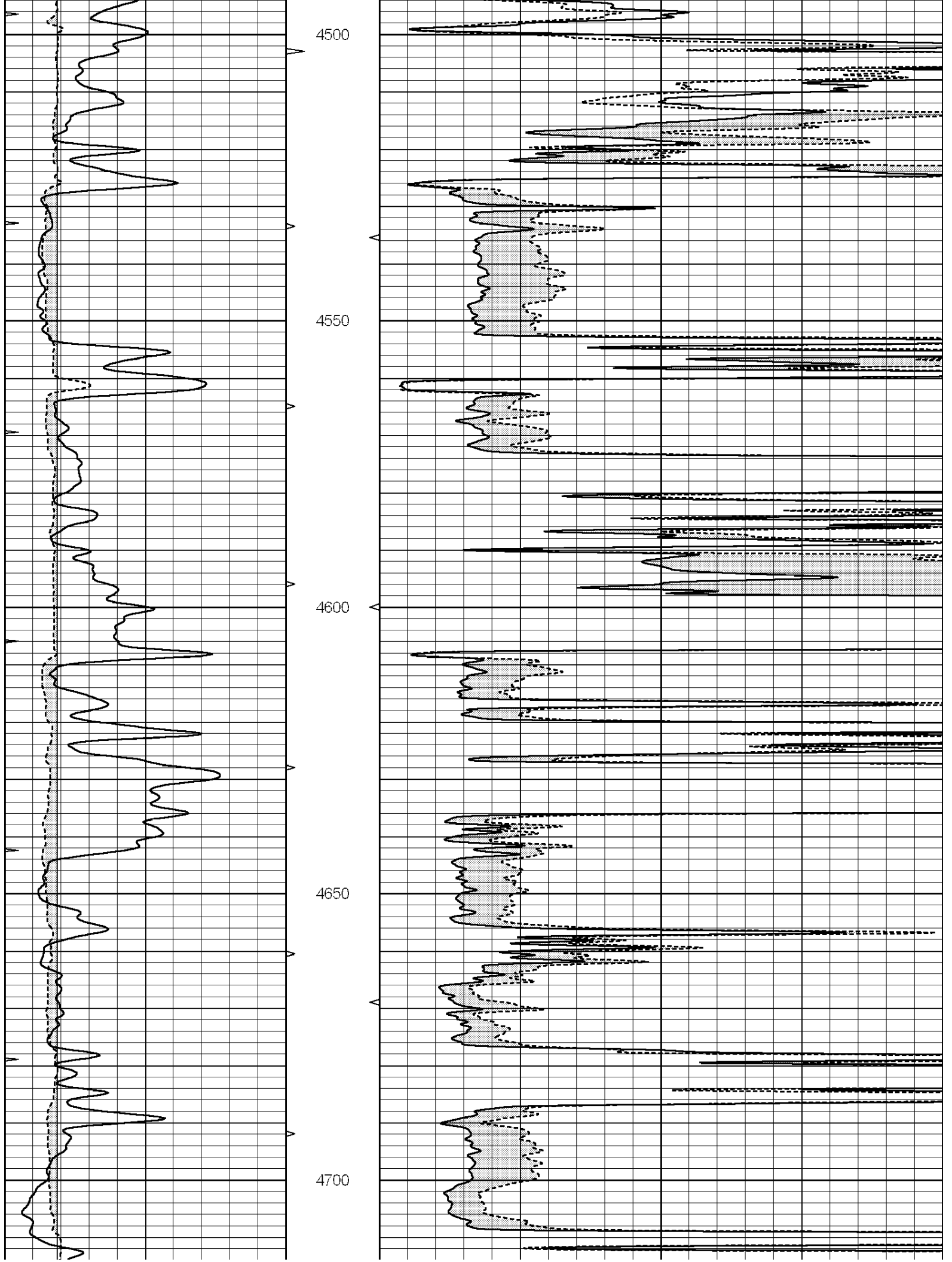
MAIN SECTION

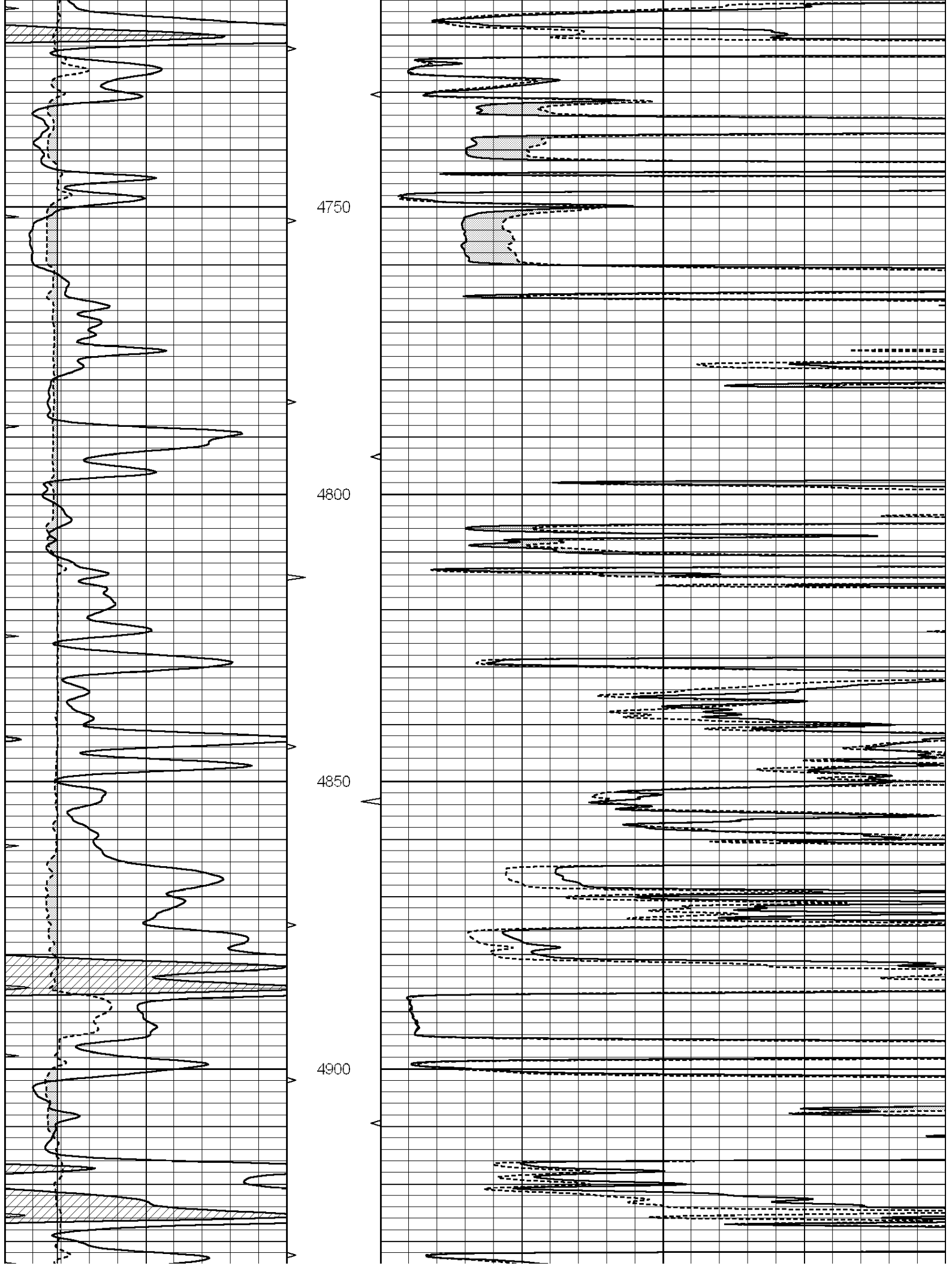
Database File: 010050pe.db
 Dataset Pathname: pass6.2
 Presentation Format: micro
 Dataset Creation: Thu Jan 24 13:45:19 2013
 Charted by: Depth in Feet scaled 1:240

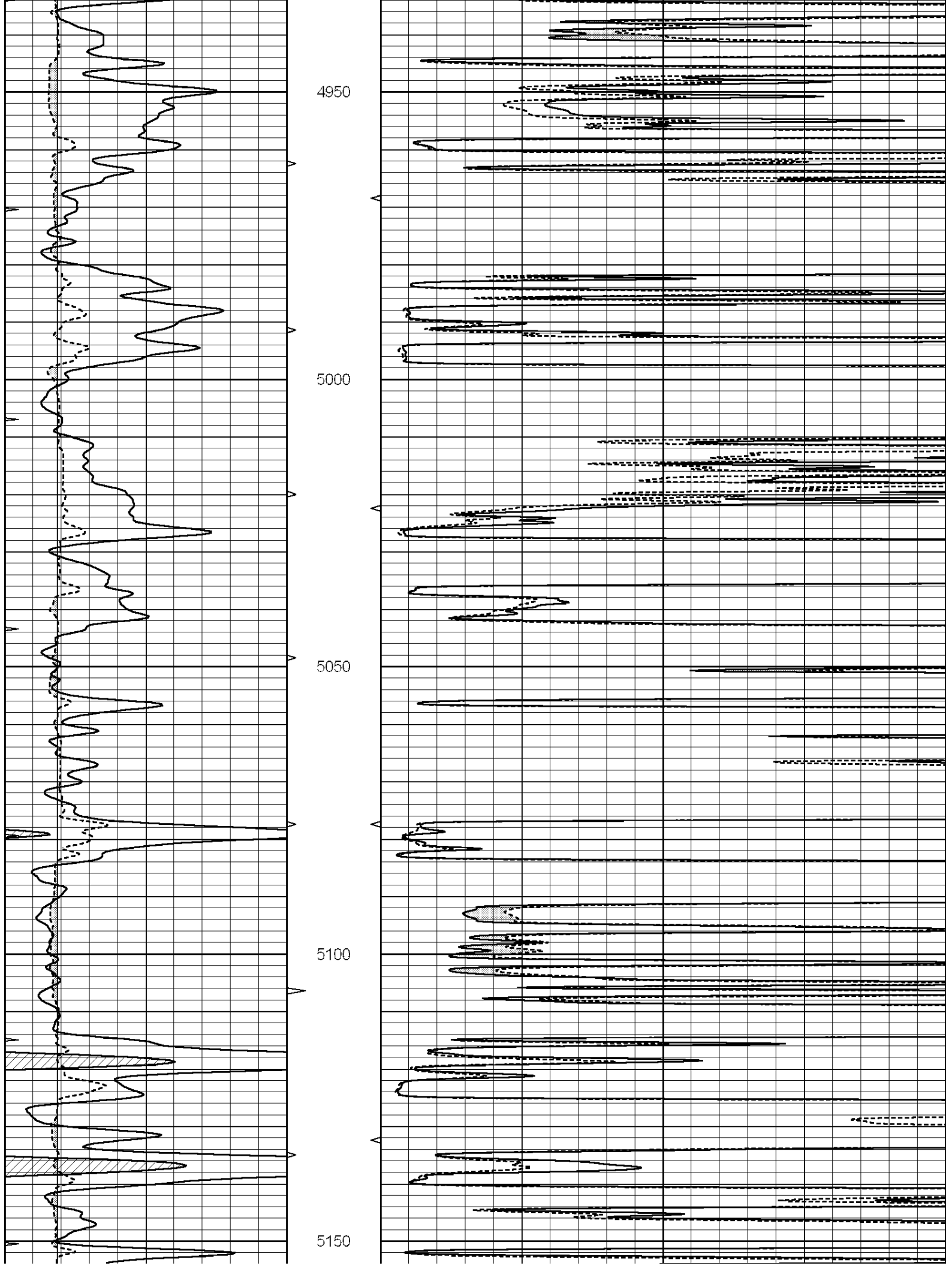
0	GAMMA RAY (GAPI)	150	ABHV	0	MEL1.5 (Ohm-m)	40
6	CALIPER (in)	16	10 (ft3)	0	MEL2.0 (Ohm-m)	40
0	MINMK	20	TBHV			
			0 (ft3)	10		

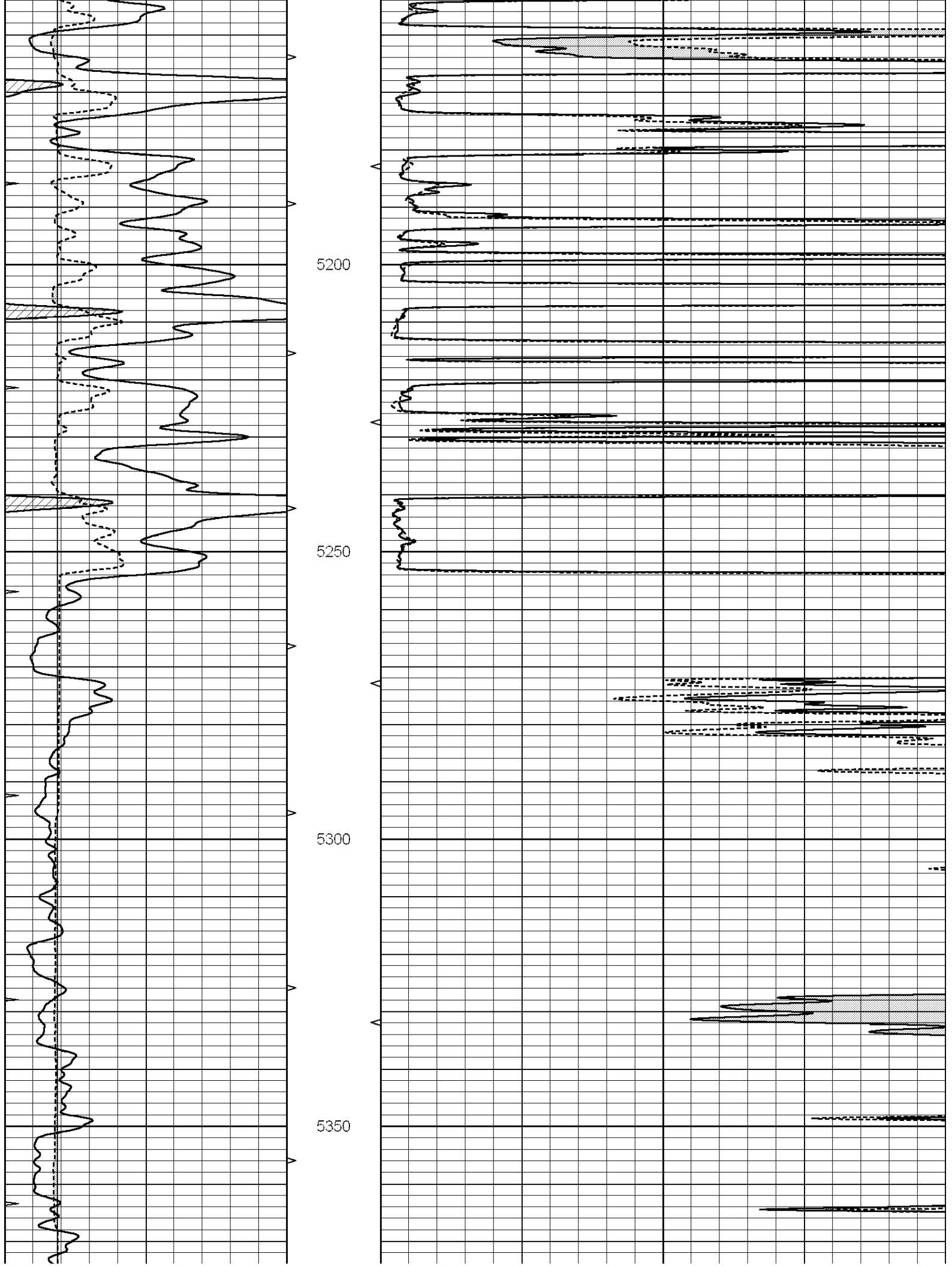


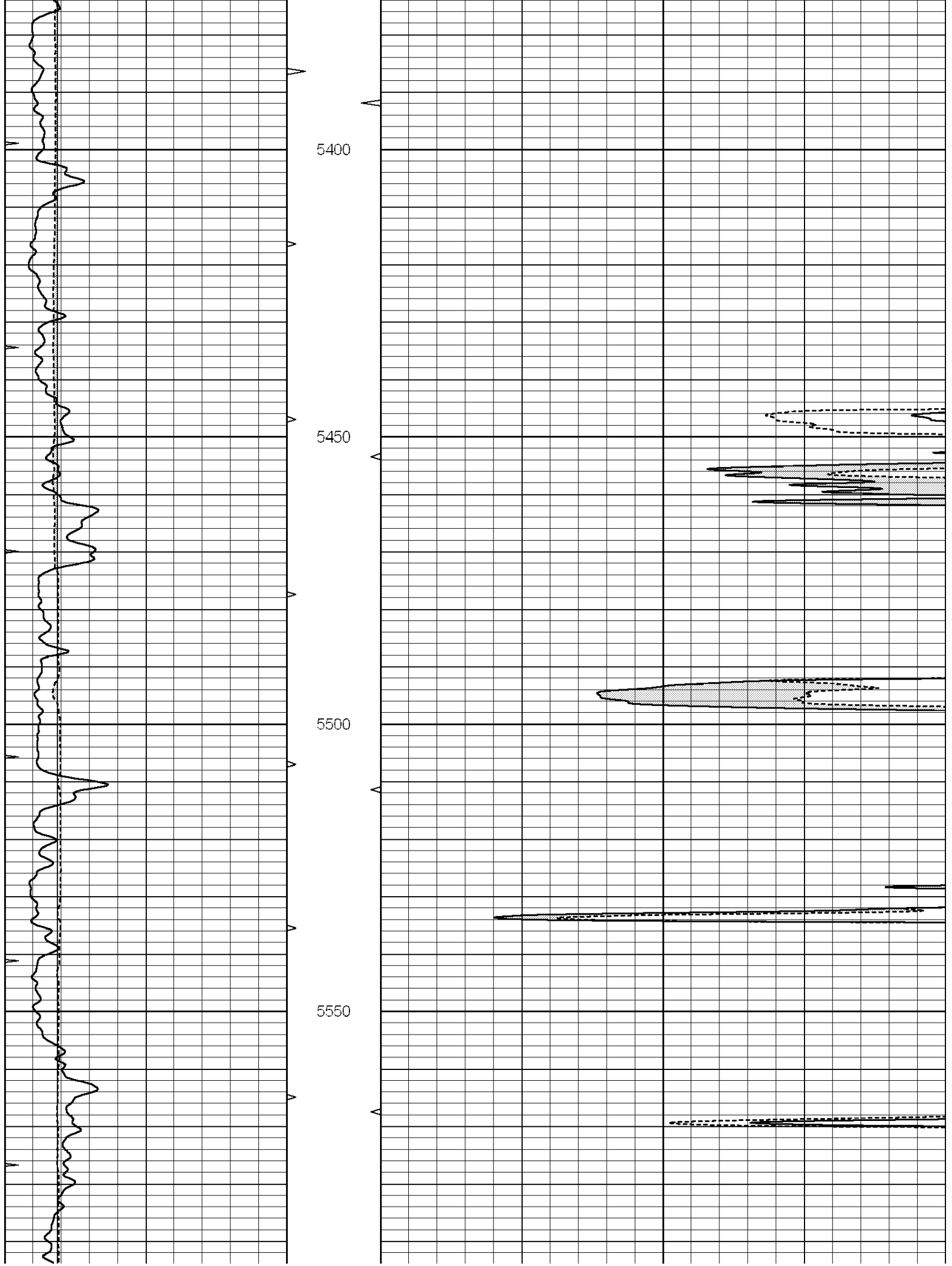


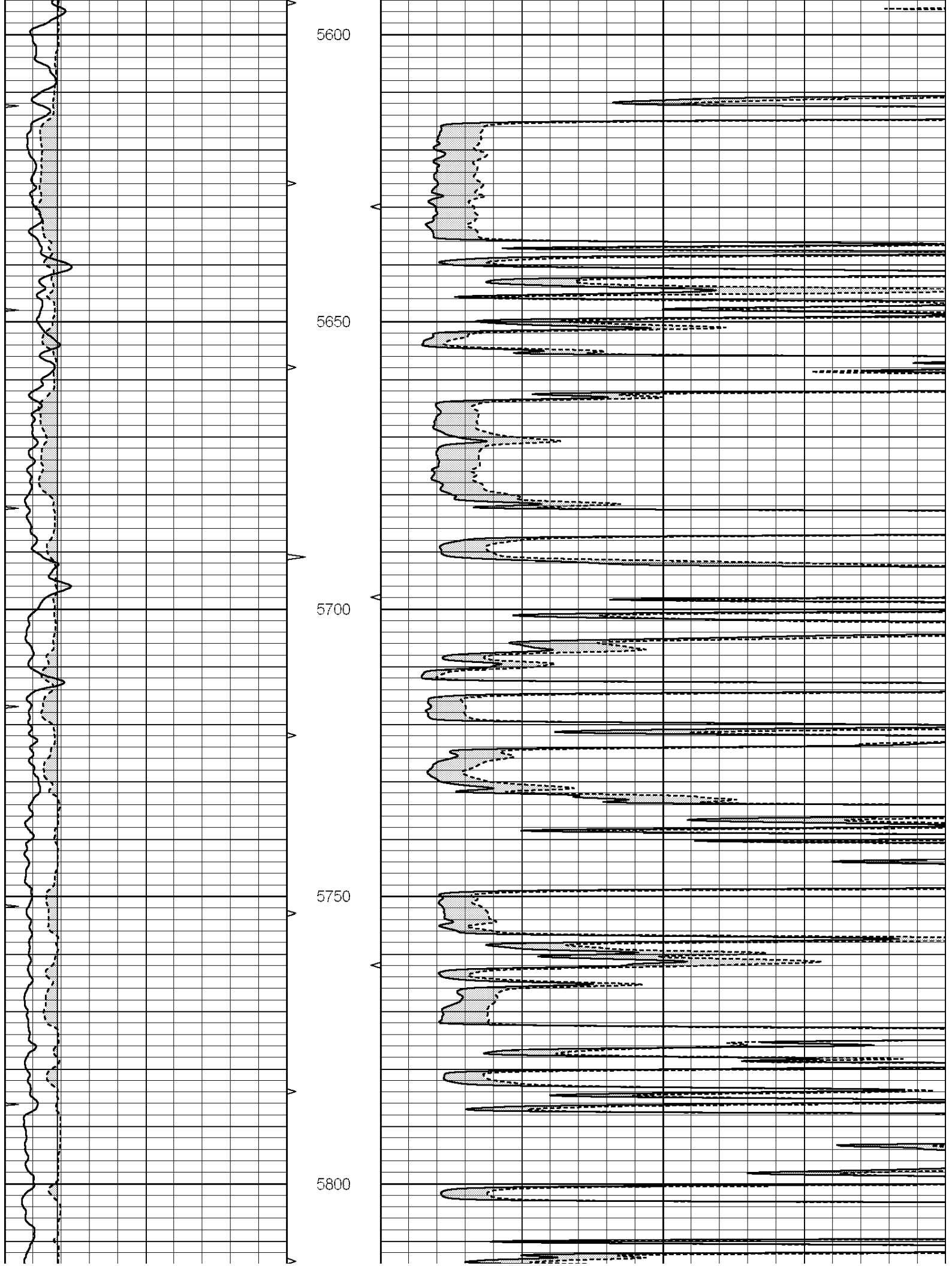


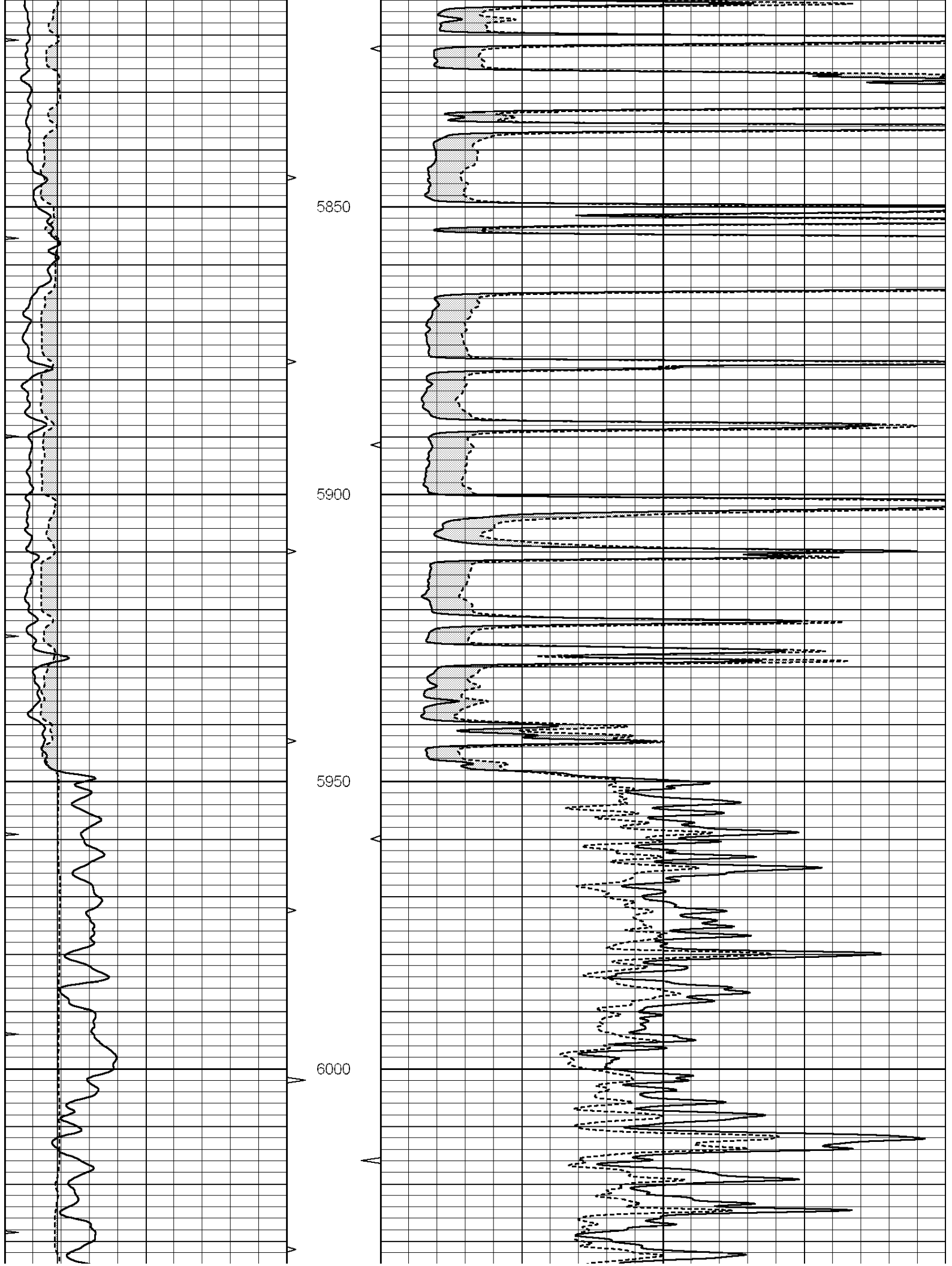


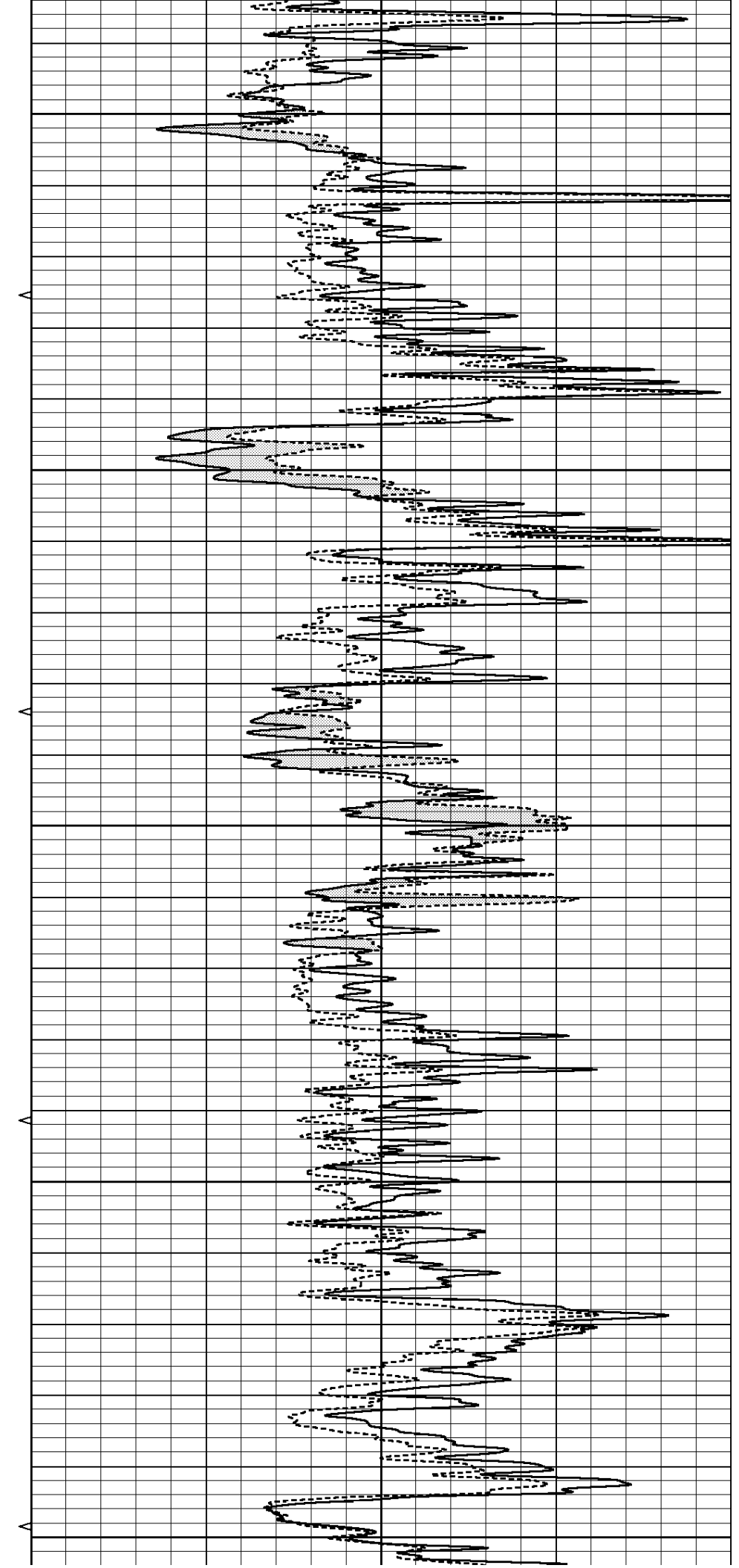
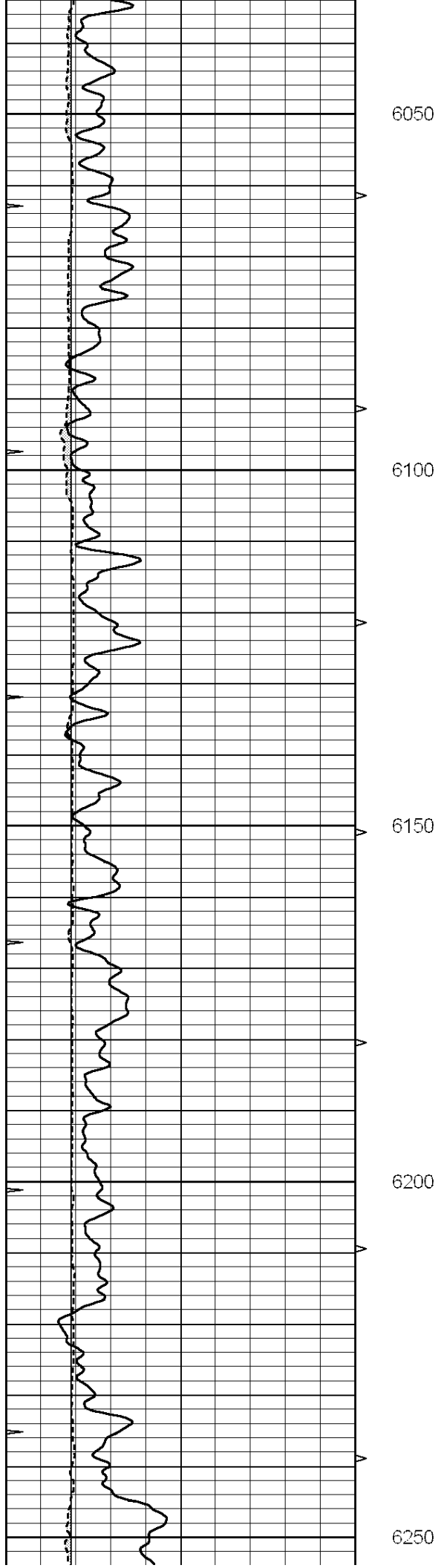


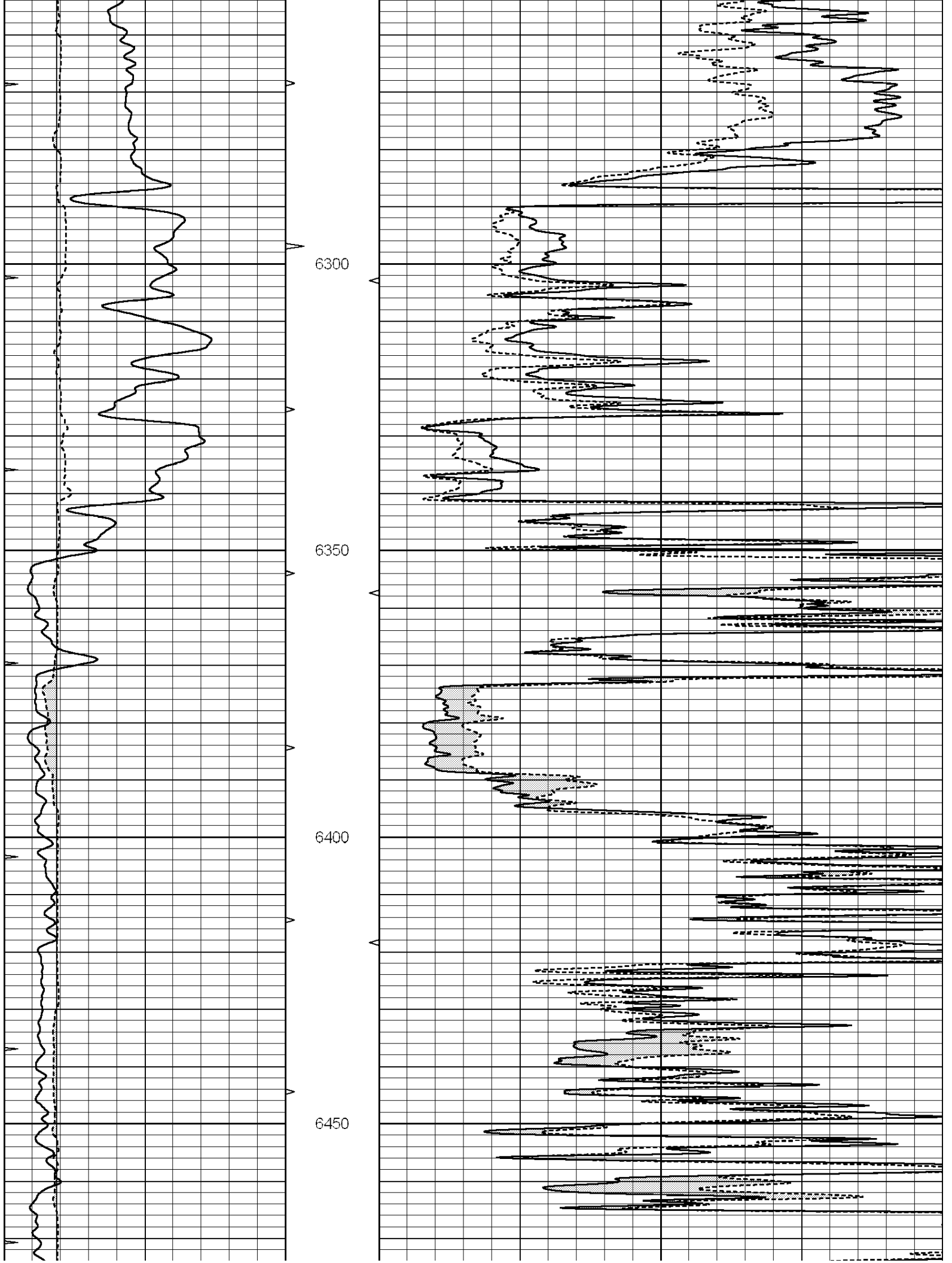


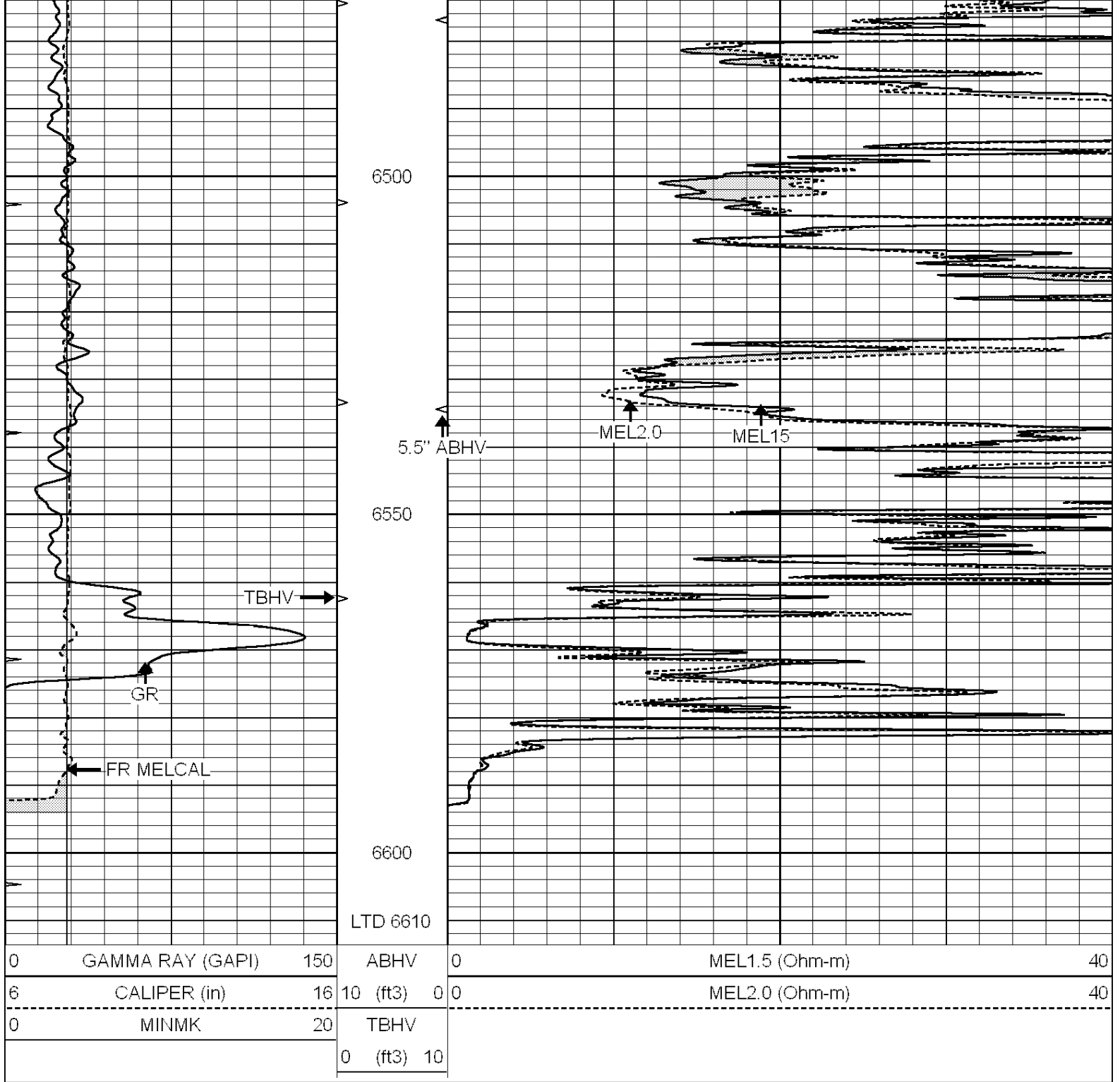










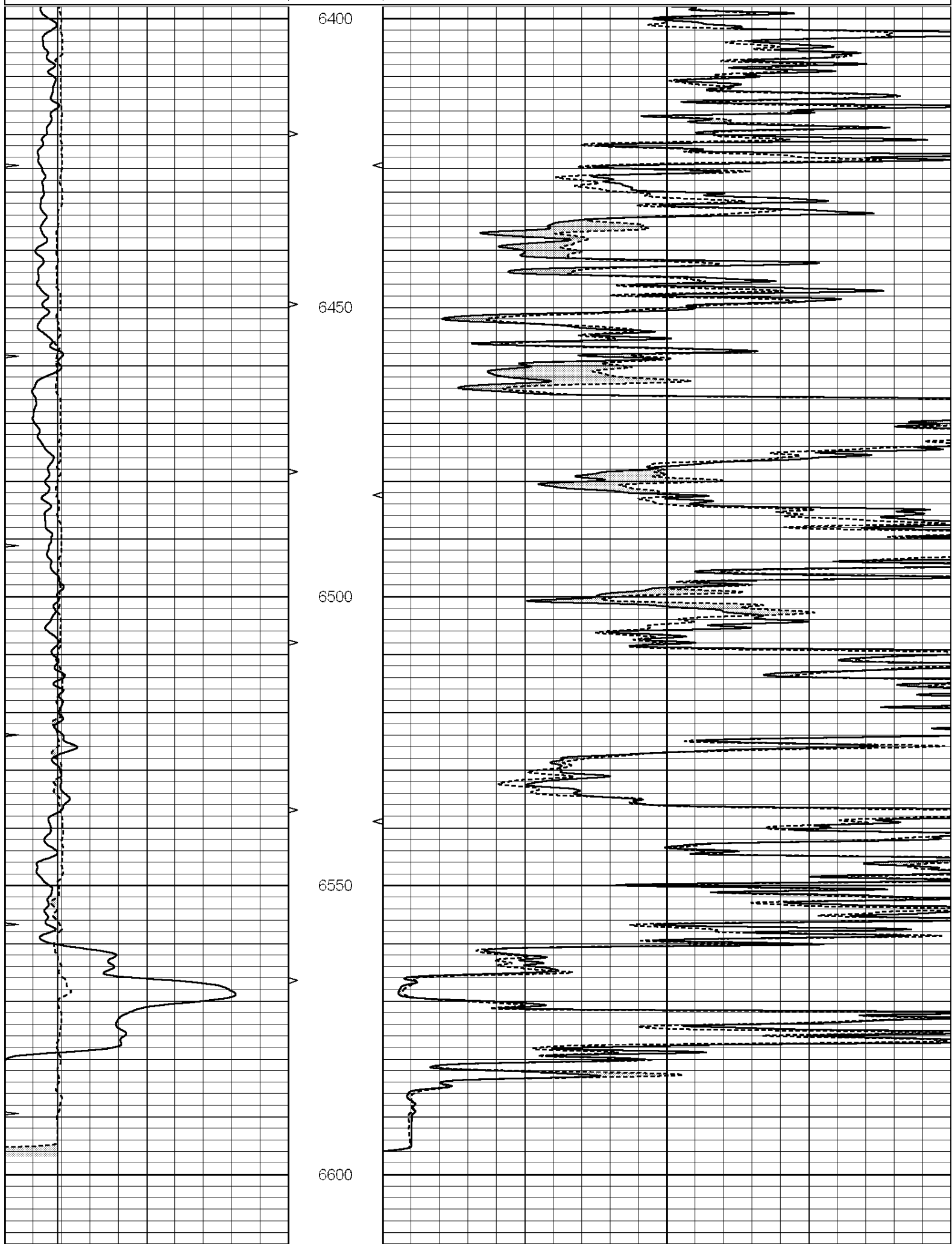


REPEAT SECTION

Database File: 010050pe.db
 Dataset Pathname: pass5.2
 Presentation Format: _micro
 Dataset Creation: Thu Jan 24 13:01:31 2013
 Charted by: Depth in Feet scaled 1:240

0	GAMMA RAY (GAPI)	150	ABHV	0	MEL1.5 (Ohm-m)	40
6	CALIPER (in)	16	10 (ft3)	0	MEL2.0 (Ohm-m)	40
0	MINMK	20	TBHV			

0 (ft3) 10



0	GAMMA RAY (GAPI)	150	ABHV	0	MEL1.5 (Ohm-m)	40
6	CALIPER (in)	16	10 (ft3)	0	MEL2.0 (Ohm-m)	40
0	MINMK	20	TBHV			
			0 (ft3)	10		

Calibration Report

Database File: 010050pe.db
Dataset Pathname: pass6.2
Dataset Creation: Thu Jan 24 13:45:19 2013

MICRO Calibration Report

Serial Number: MICRO5
Tool Model: PROBE
Performed: Thu Jan 24 11:58:27 2013

Caliper Calibration: Gain=3.744 Offset=-6.190

	Low Cal	High Cal
References	7.800	15.000
Readings	3.737	5.660

1.5" Calibration: Gain=35.000 Offset=-0.500

	Low Cal	High Cal
References	0.000	20.000
Readings	0.014	0.998

2" Calibration: Gain=60.000 Offset=-1.000

	Low Cal	High Cal
References	0.000	20.000
Readings	0.009	0.904

Gamma Ray Calibration Report

Serial Number: GR4
Tool Model: OPEN
Performed: Thu Jan 24 12:09:35 2013

Calibrator Value: 200.0 GAPI

Background Reading: 0.0 cps
Calibrator Reading: 189.0 cps

Sensitivity: 1.6000 GAPI/cps