



Pioneer Energy Services

Dual Induction Log

15-051-26,549-00-00

API No.

Company **Staab Oil Company**

Well **Yocemento Benno #1**

Field **Wildcat**

County **Eljis** State **Kansas**

Location

**NE-SE-NW-NE
830' FNL & 1370' FEL**

Sec: **28** Twp: **12S** Rge: **19W**

Other Services
CNL/CDL
MEL

Permanent Datum **Ground Level** Elevation **2162**

Log Measured From **Kelly Bushing** 5 Ft. Above Perm. Datum

Drilling Measured From **Kelly Bushing**

Elevation

K.B. 2167

D.F. 2162

G.L. 2162

Date **7/9/2013**

Run Number **One**

Depth Driller **3875**

Depth Logger **3875**

Bottom Logged Interval **3874**

Top Log Interval **200**

Casing Driller **8.625 @ 217**

Casing Logger **214**

Bit Size **7.875**

Type Fluid in Hole **Chemical**

Salinity,ppm CL **1,900**

Density / Viscosity **9.1 63**

pH / Fluid Loss **10.5 6.8**

Source of Sample **Flowline**

Rm @ Meas. Temp **.50 @ 88**

Rmf @ Meas. Temp **.38 @ 88**

Rmc @ Meas. Temp **.68 @ 88**

Source of Rmf / Rmc **Charts**

Rm @ BHT **.38 @ 115**

Operating Rig Time **4 Hours**

Max Rec. Temp. F **115**

Equipment Number **15**

Location **Hays**

Recorded By **J. Hennickson**

Witnessed By **Randy Kilian**

Recorded By **D. Kerr**

Witnessed By **Frank Staab**

<<< Fold Here >>>

All interpretations are opinions based on inferences from electrical or other measurements and we cannot and do not guarantee the accuracy or correctness of any interpretation, and we shall not, except in the case of gross or willful negligence on our part, be liable or responsible for any loss, costs, damages, or expenses incurred or sustained by anyone resulting from any interpretation made by any of our officers, agents or employees. These interpretations are also subject to our general terms and conditions set out in our current Price Schedule.

Comments

Thank you for using Pioneer Energy Services
www.pioneerres.com
785 625 3858

Yocemento Exit
4 1/2 North, 1/2 West, South Into

Database File: c:\warrior\data\staab_yocemento benno #1\staaboil_yocemento_benno_1hd.db
Dataset Pathname: DIL\staabstk
Presentation Format: dil2in
Dataset Creation: Tue Jul 09 08:13:00 2013
Charted by: Depth in Feet scaled 1:600

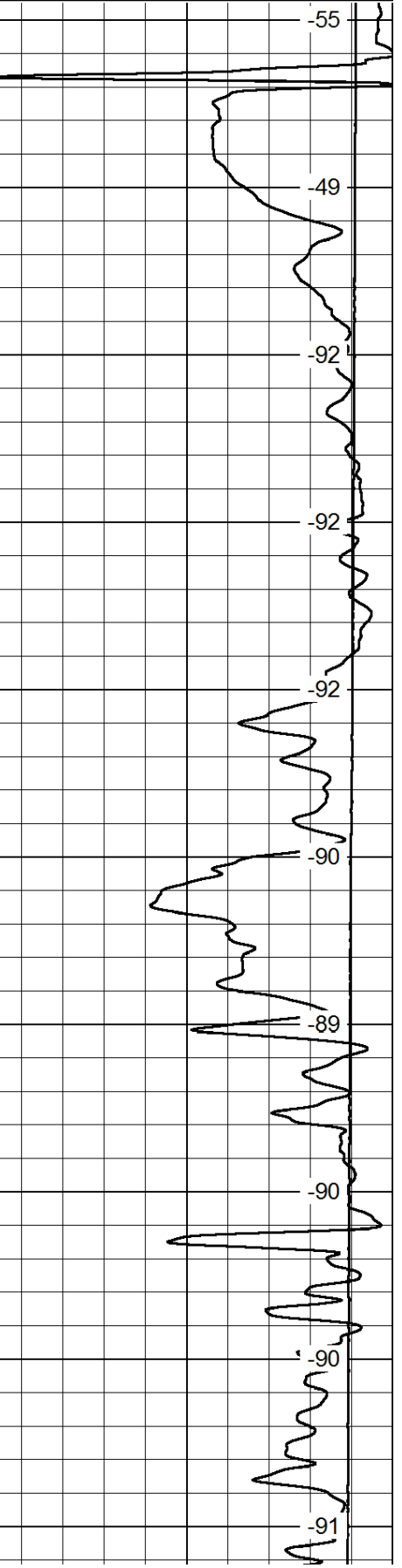
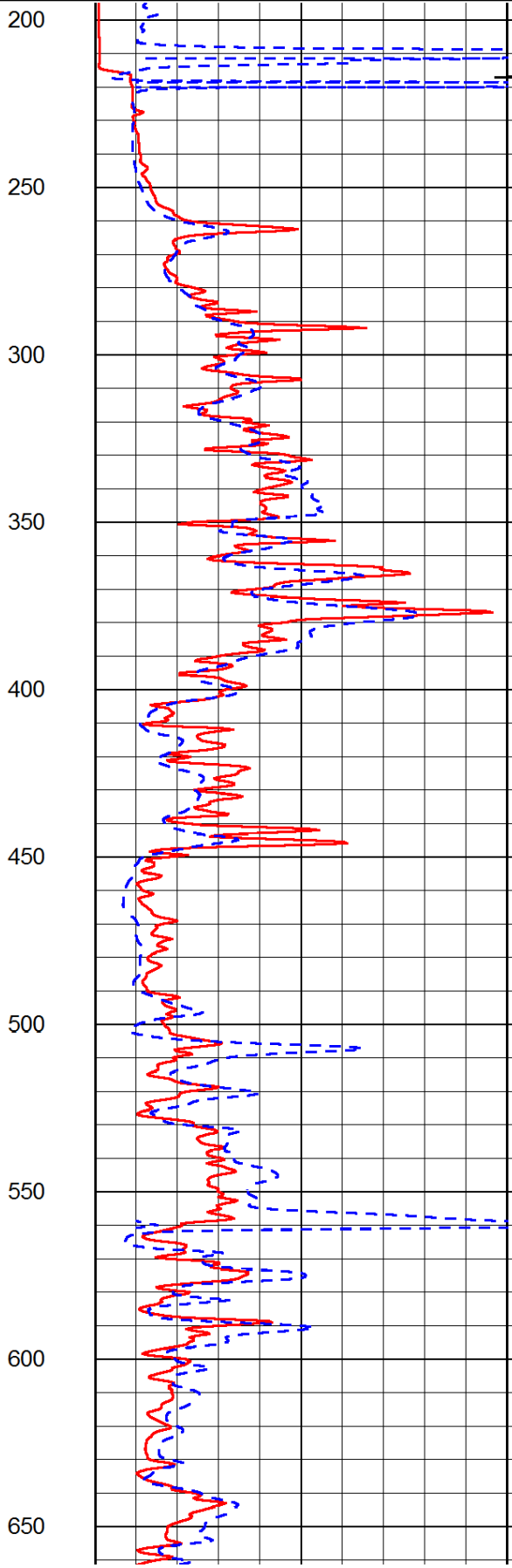
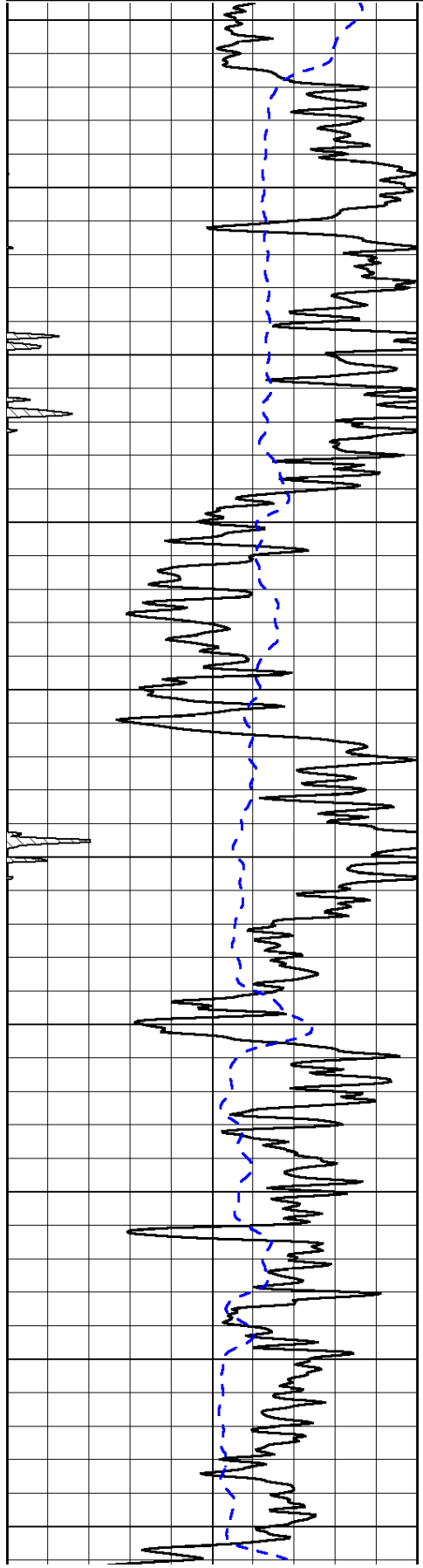
0	Gamma Ray	150
-200	SP (mV)	0

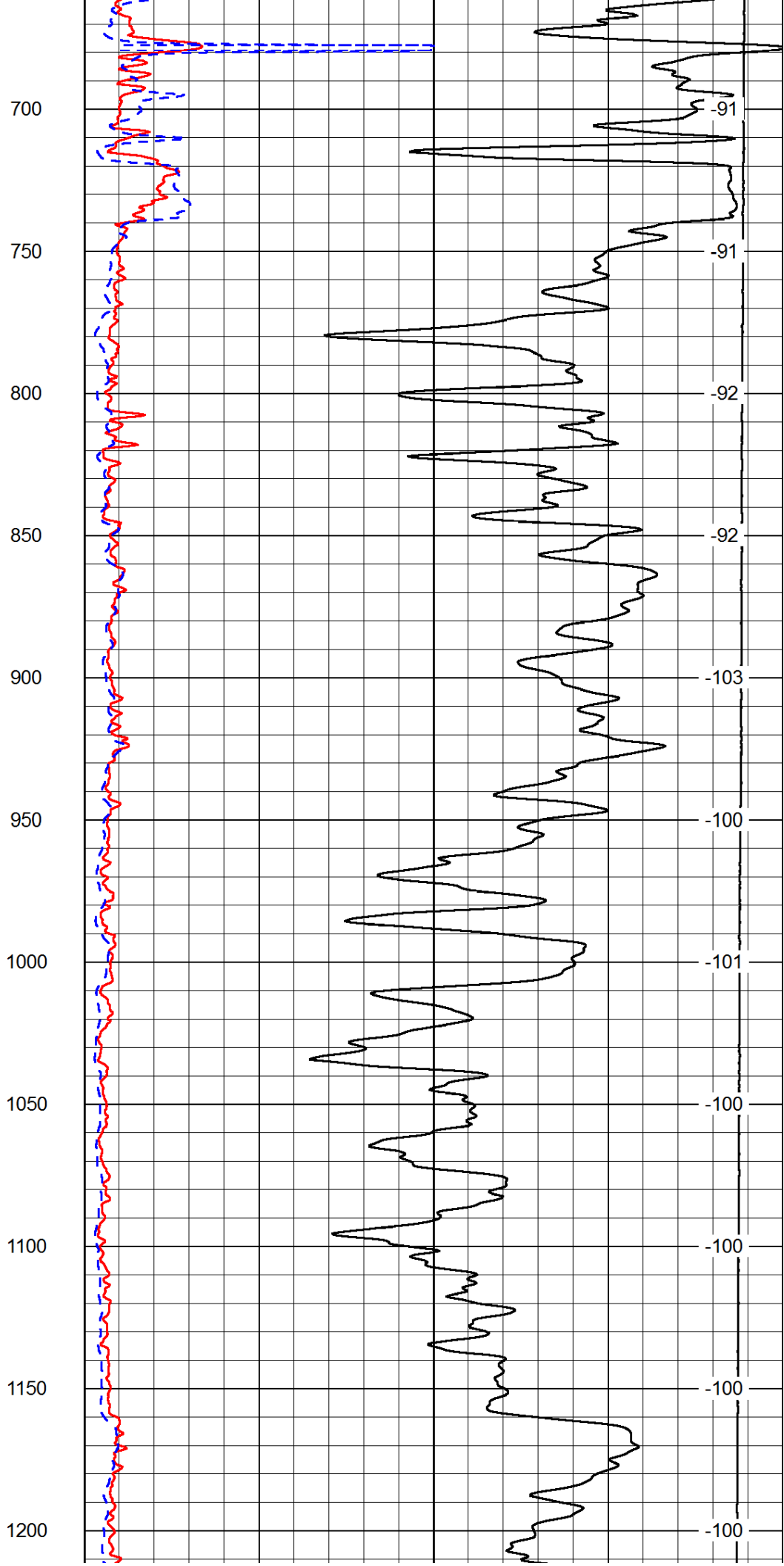
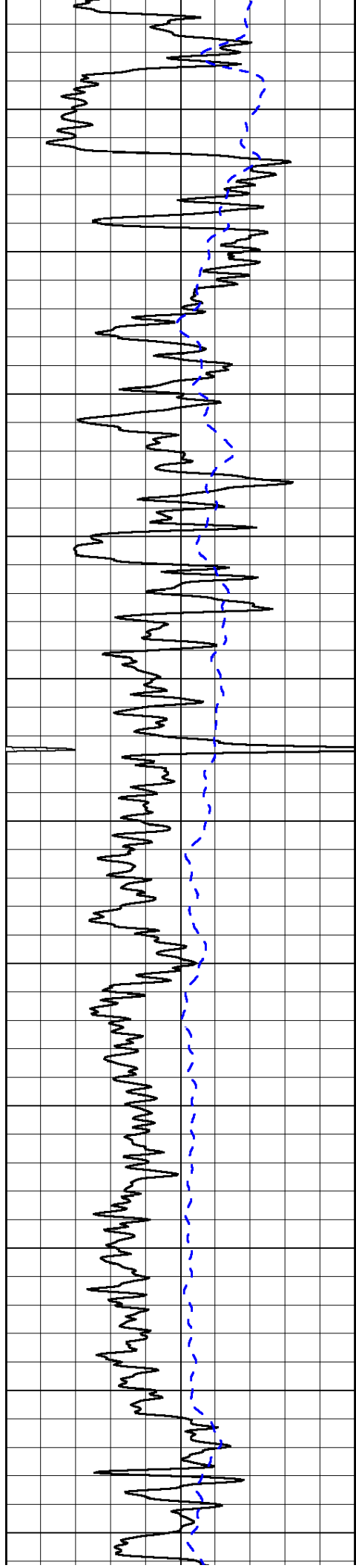
0	Shallow Resistivity	50
0	Deep Resistivity	50

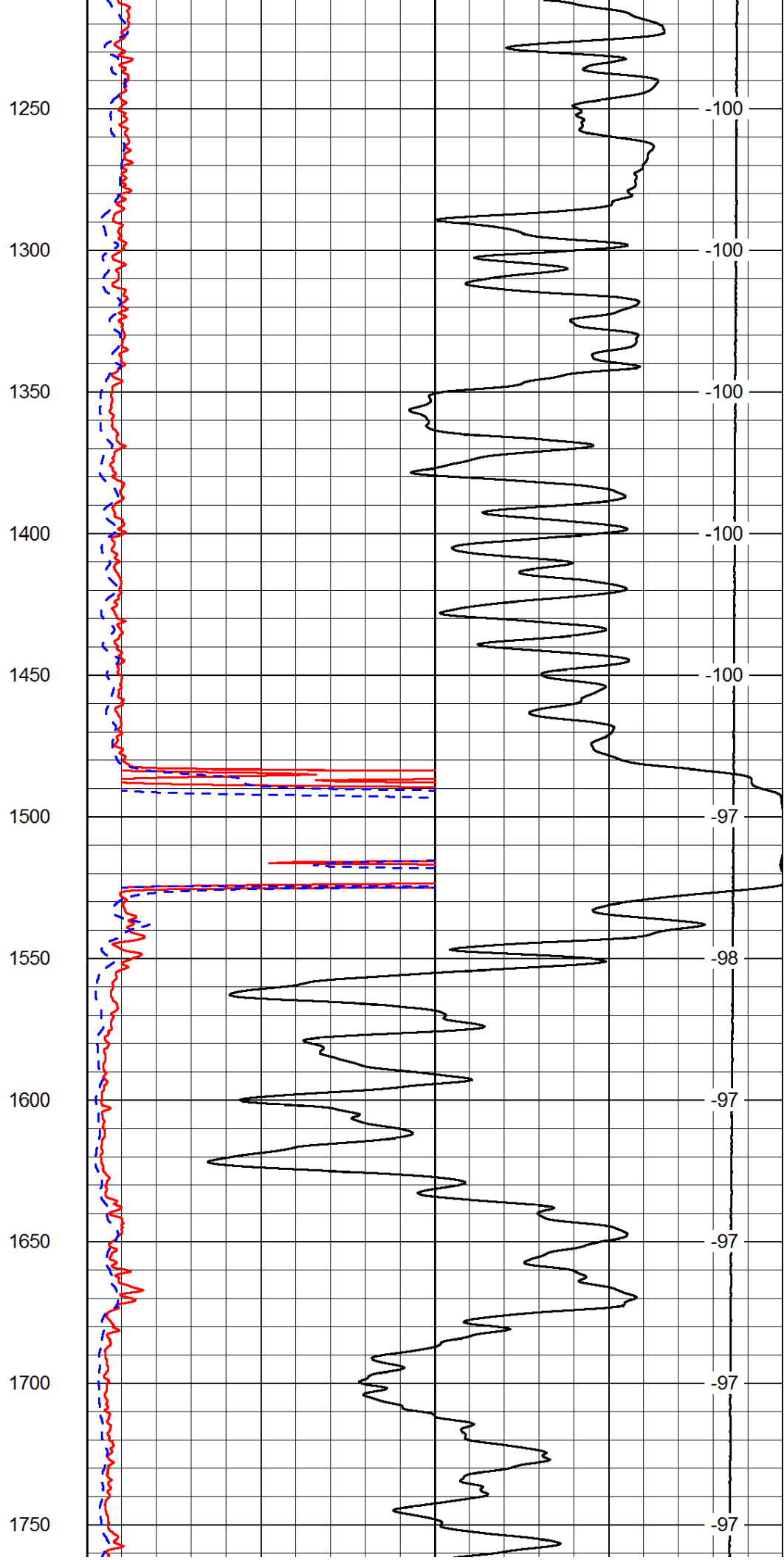
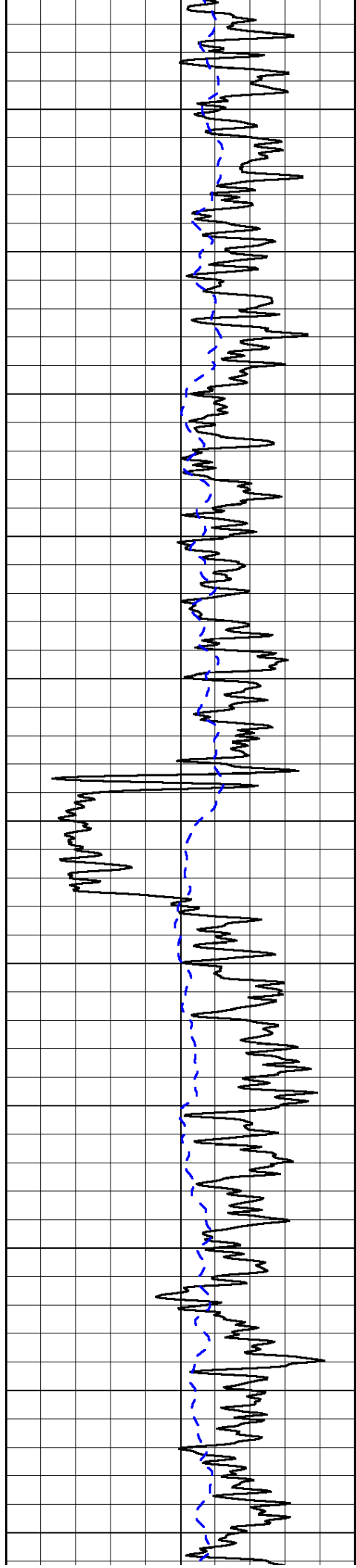
LSPD

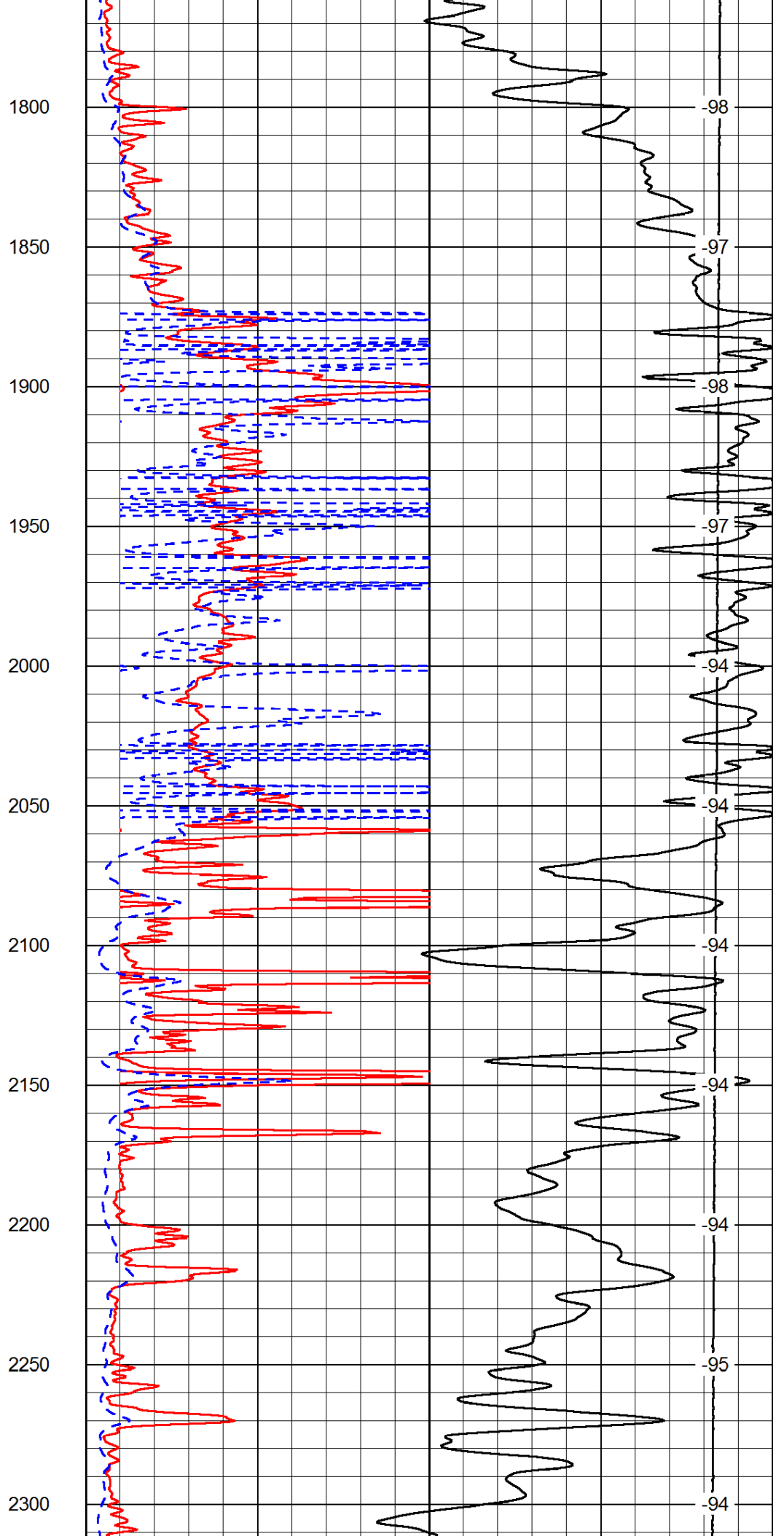
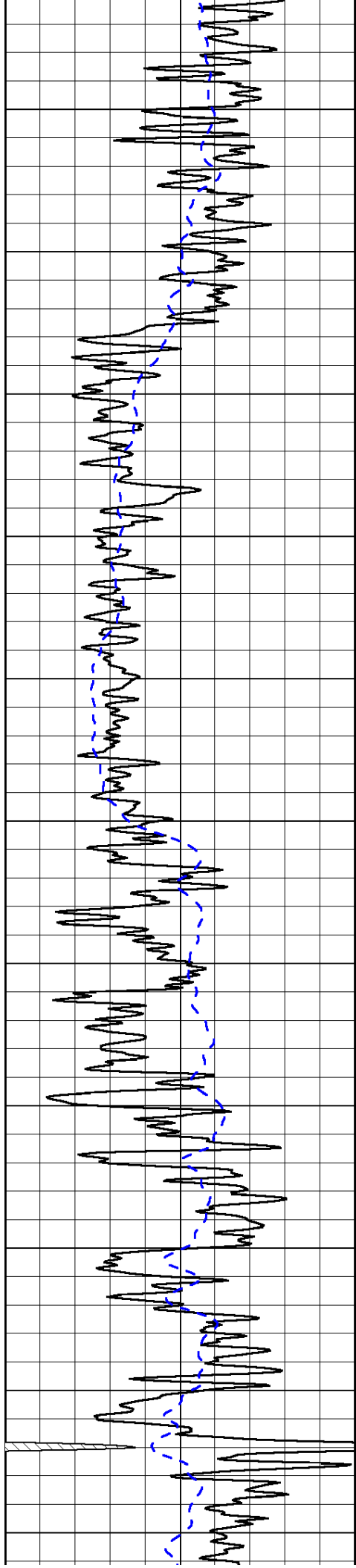
1000	Conductivity	0
15000	Line Tension	0

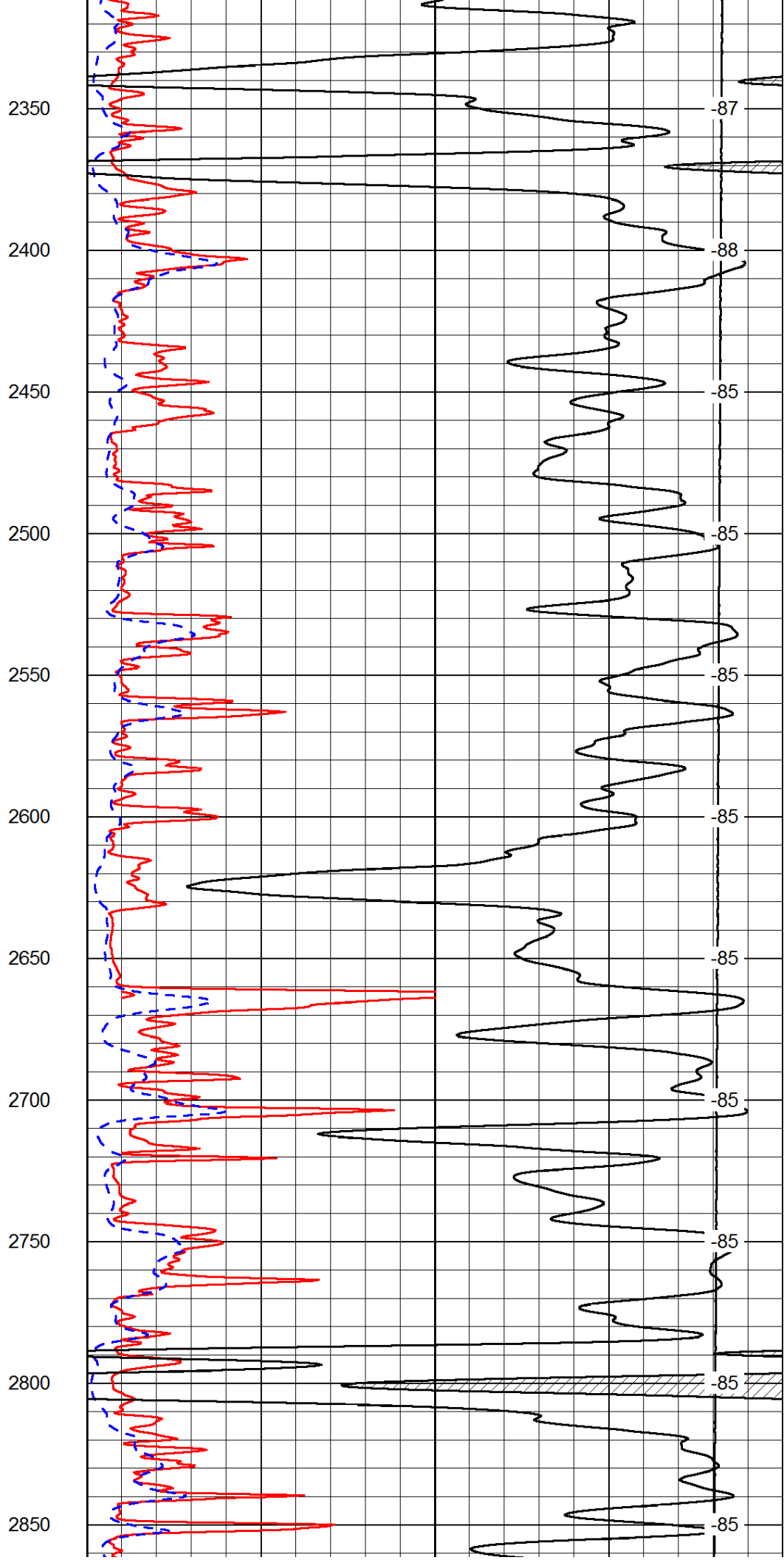
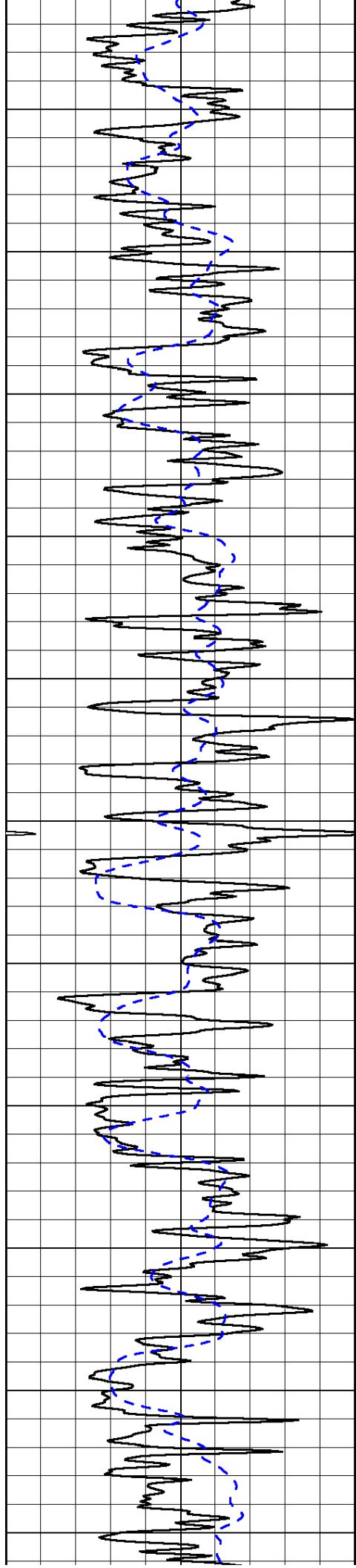
50	Shallow Resistivity	500
50	Deep Resistivity	500

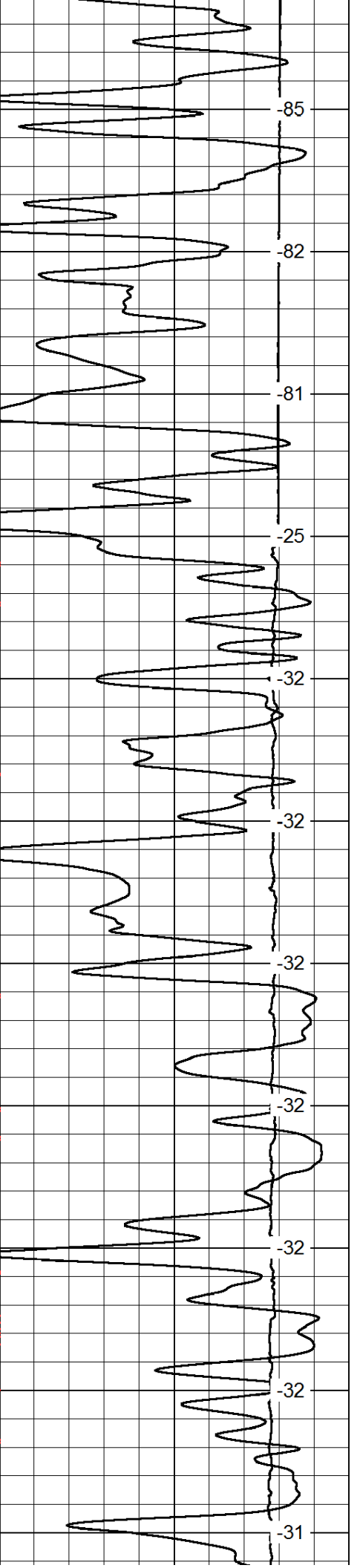
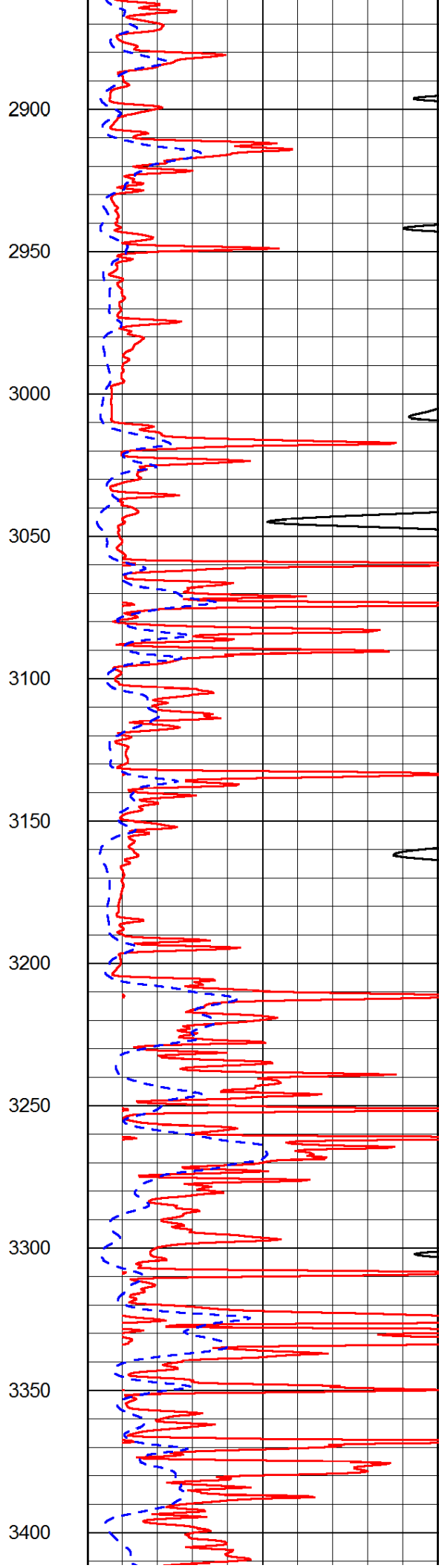
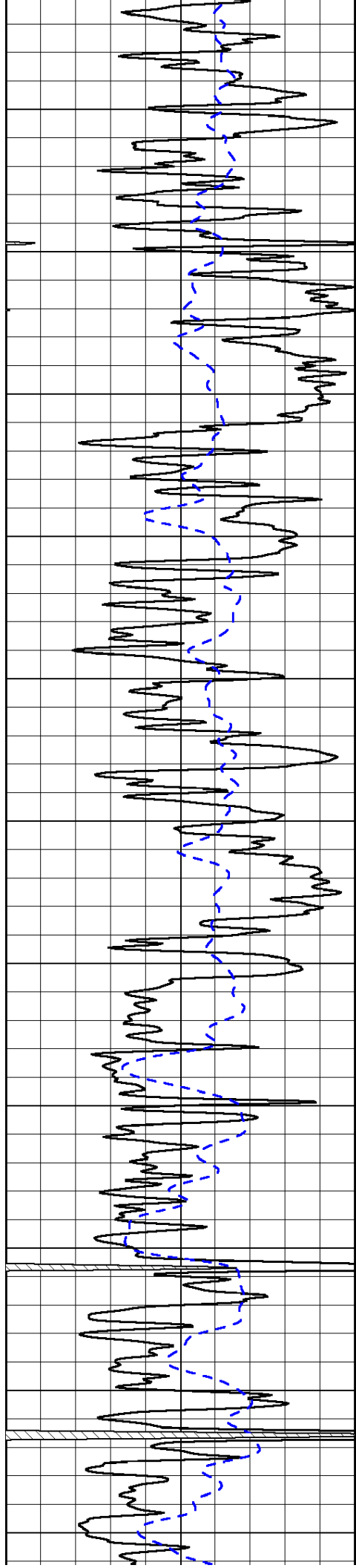


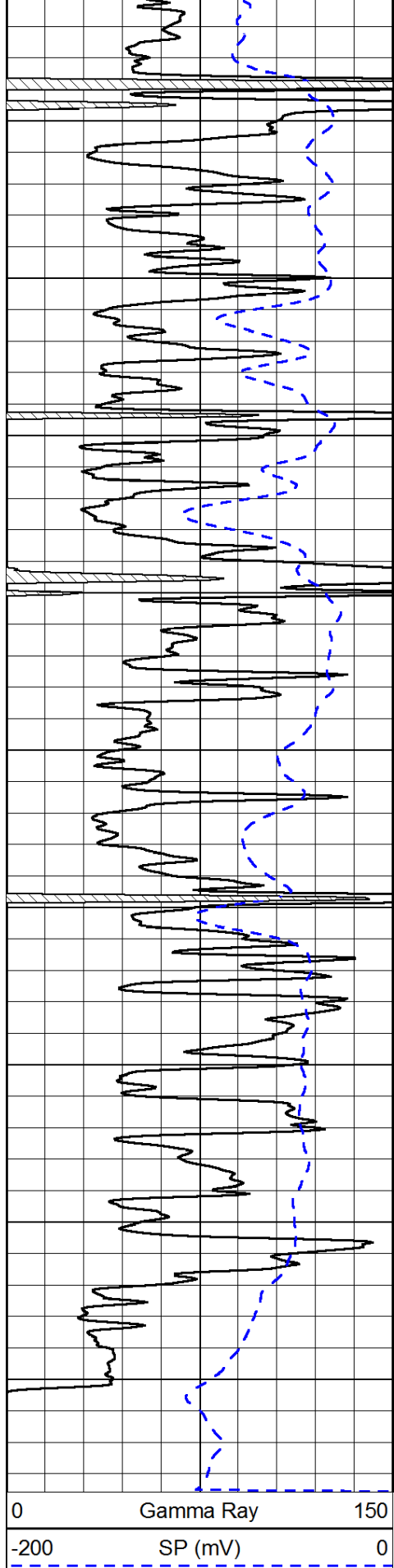






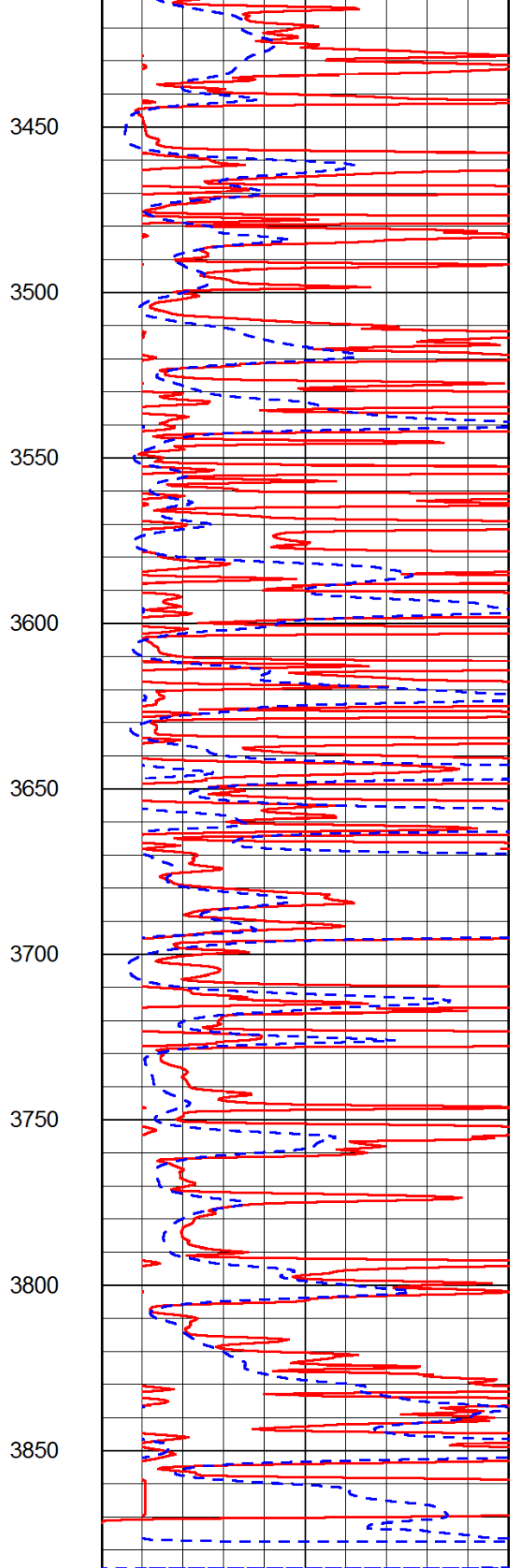






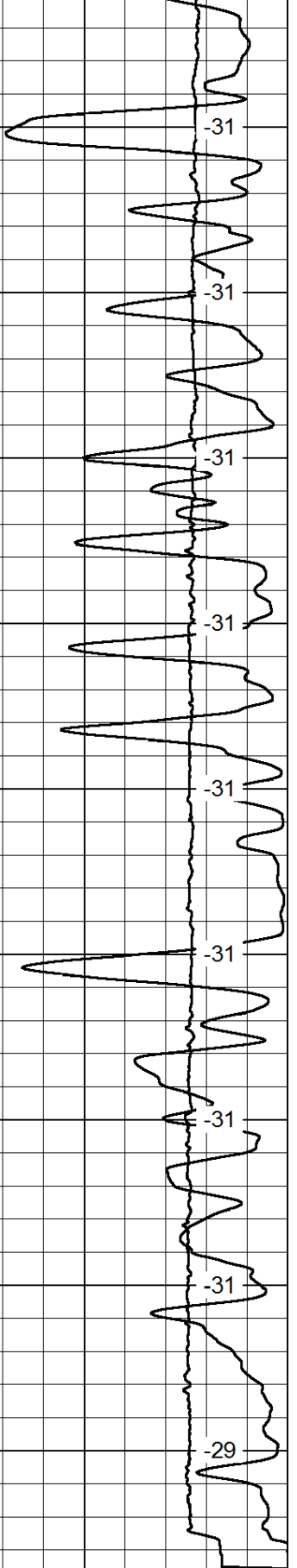
0 150

-200 0



0 50

0 50



0

0

1000 Conductivity 0

15000 Line Tension 0

50 Shallow Resistivity 50

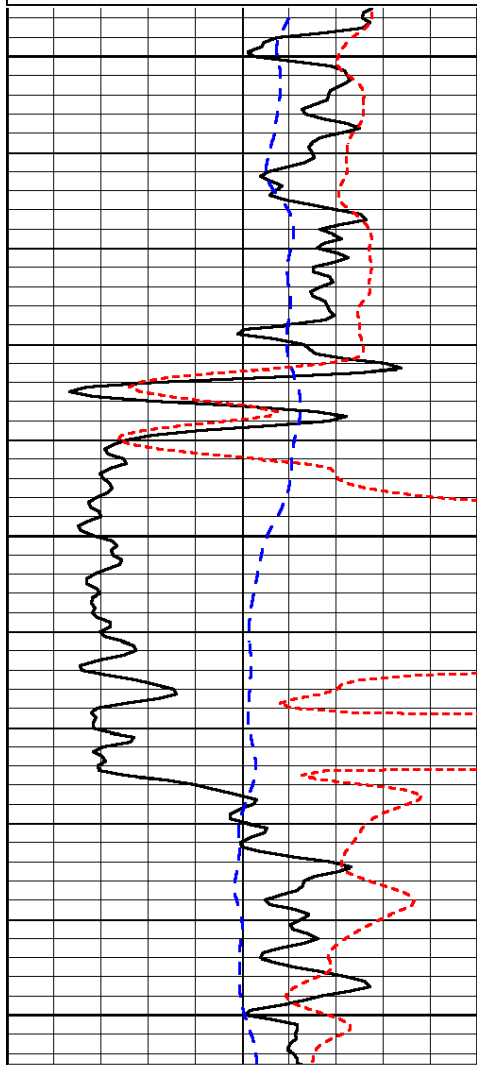
50 Deep Resistivity 50

Database File: c:\warrior\data\staab_yocemento benno #1\staaboil_yocemento_benno_1hd.db
 Dataset Pathname: DIL/staabstk
 Presentation Format: dil
 Dataset Creation: Tue Jul 09 08:13:00 2013
 Charted by: Depth in Feet scaled 1:240

0	Gamma Ray	150
-200	SP (mV)	0
-160	RxoRt	40

0.2	Deep Resistivity	2000
0.2	Medium Resistivity	2000
0.2	Shallow Resistivity	2000
15000	Line Tension	0

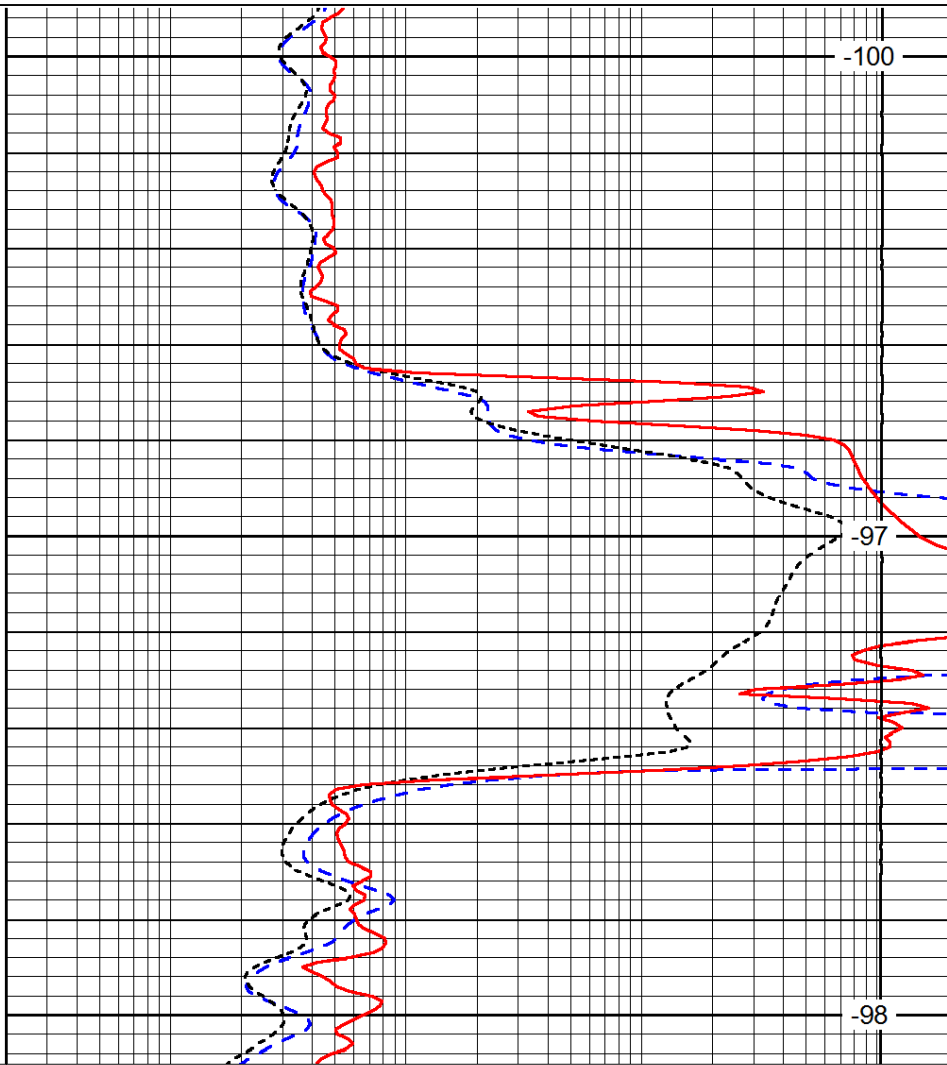
LSPD



1450

1500

1550



-100

-97

-98

0	Gamma Ray	150
-200	SP (mV)	0
-160	RxoRt	40

0.2	Deep Resistivity	2000
0.2	Medium Resistivity	2000
0.2	Shallow Resistivity	2000
15000	Line Tension	0

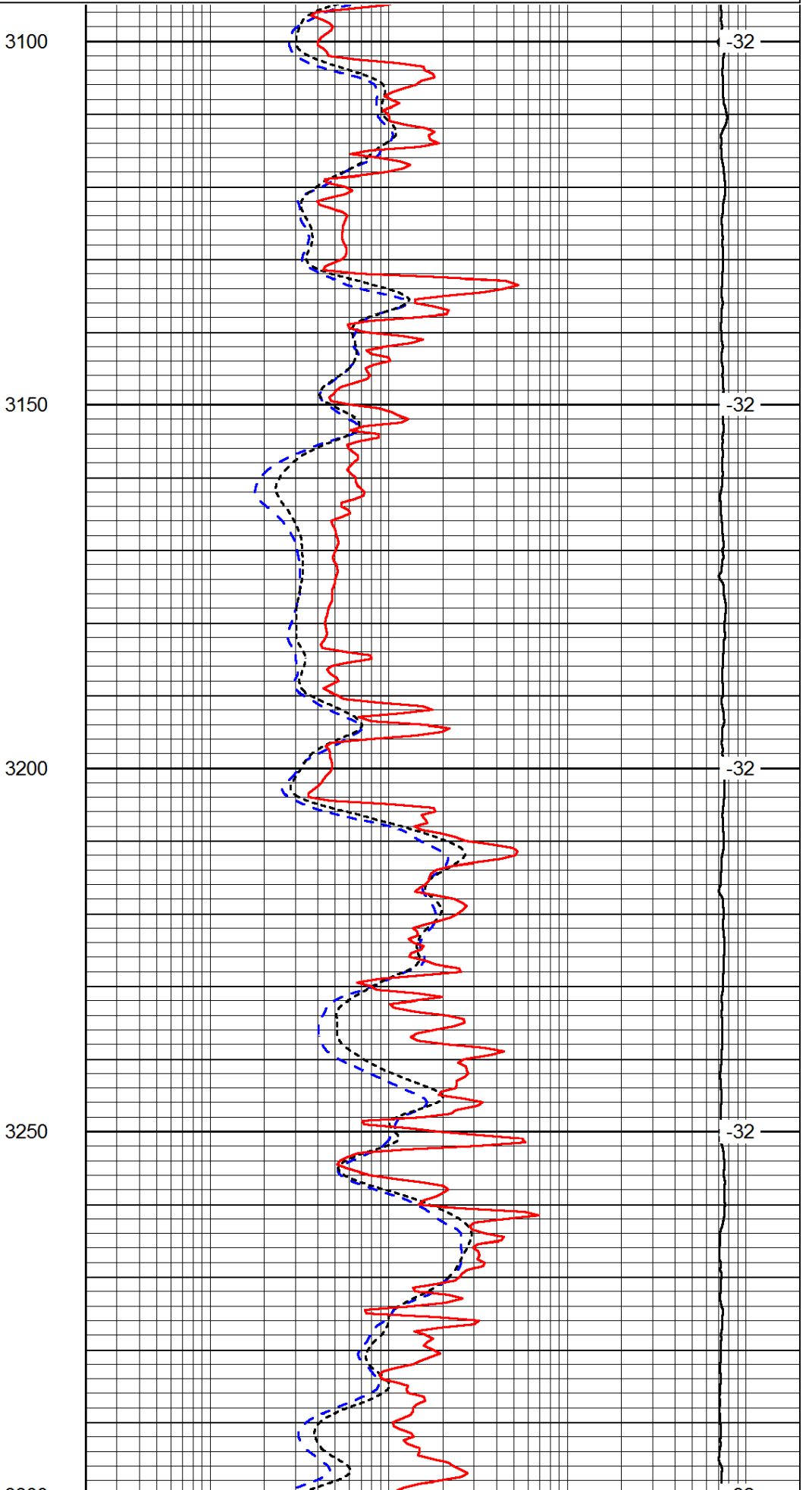
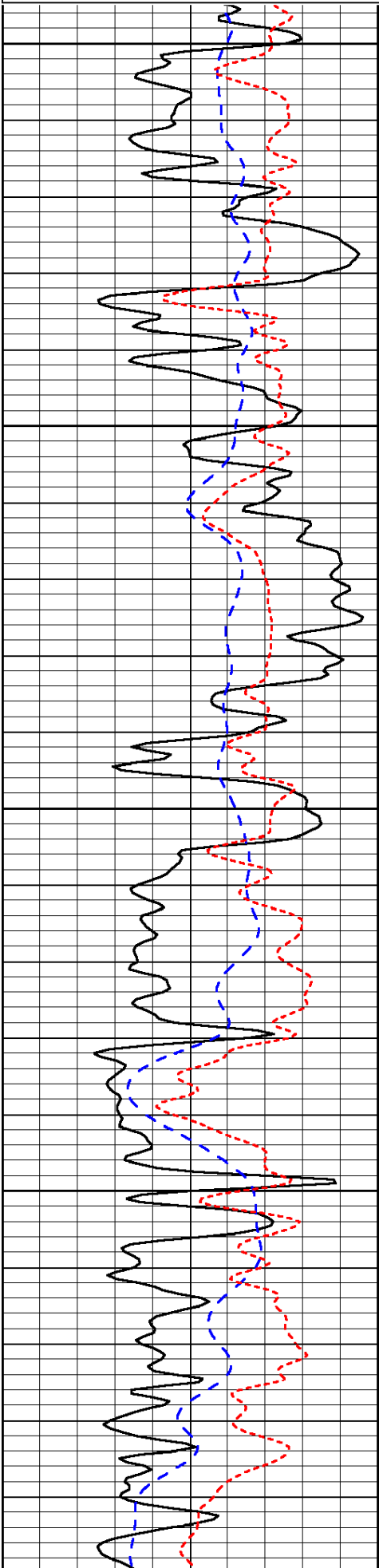
LSPD

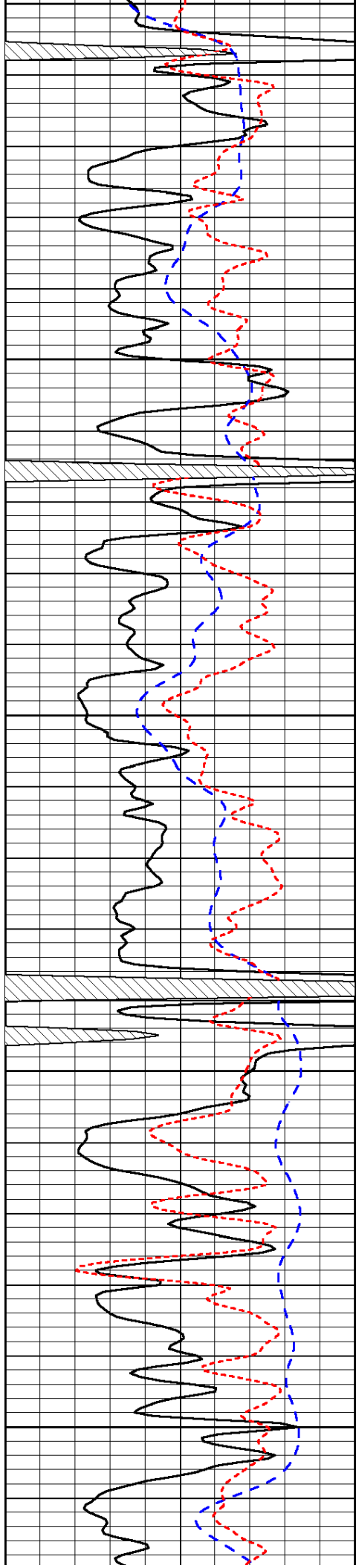
Database File: c:\warrior\data\staab_yocemento benno #1\staaboil_yocemento_benno_1hd.db
 Dataset Pathname: DIL/staabstk
 Presentation Format: dil
 Dataset Creation: Tue Jul 09 08:13:00 2013
 Charted by: Depth in Feet scaled 1:240

0	Gamma Ray	150
-200	SP (mV)	0

0.2	Deep Resistivity	2000
0.2	Medium Resistivity	2000

LSPD





3300

3350

3400

3450

3500

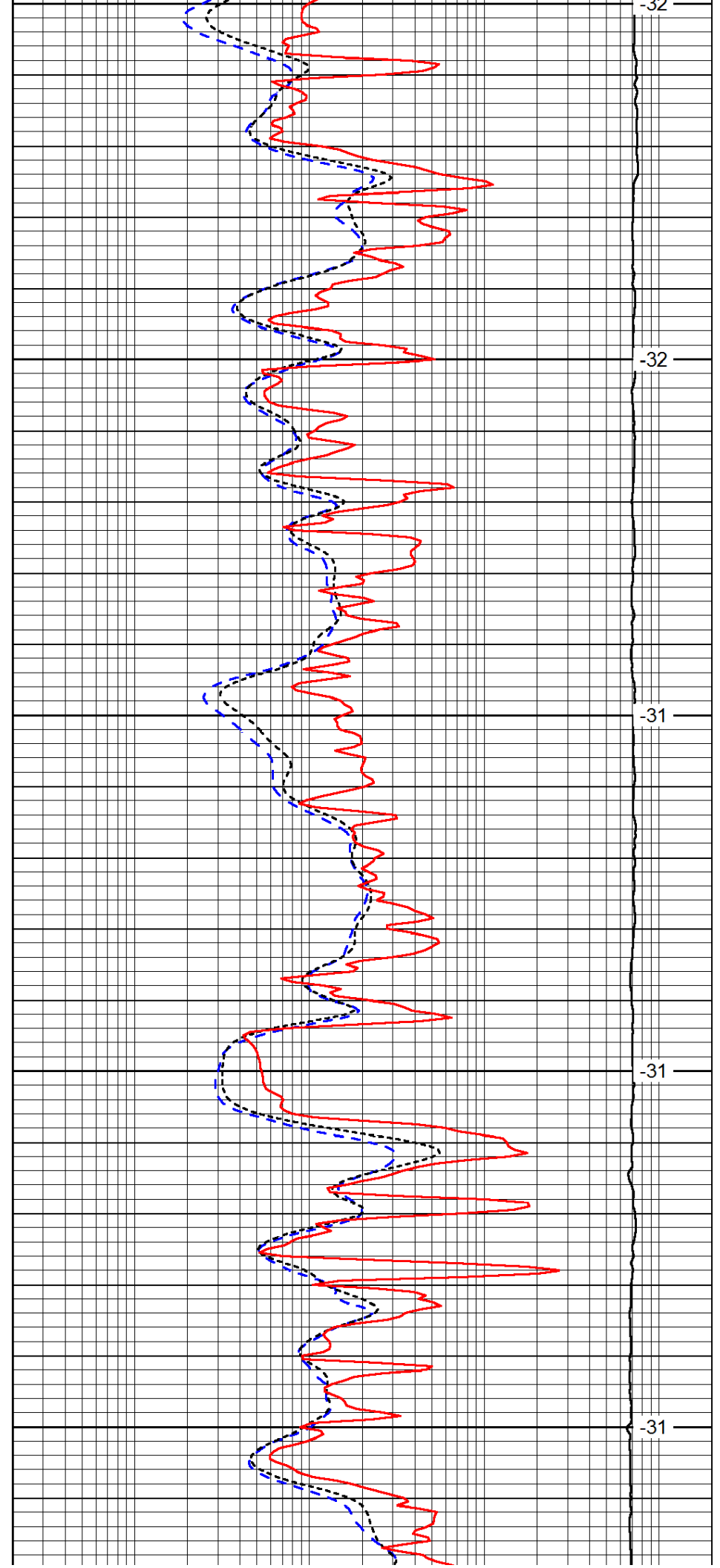
-32

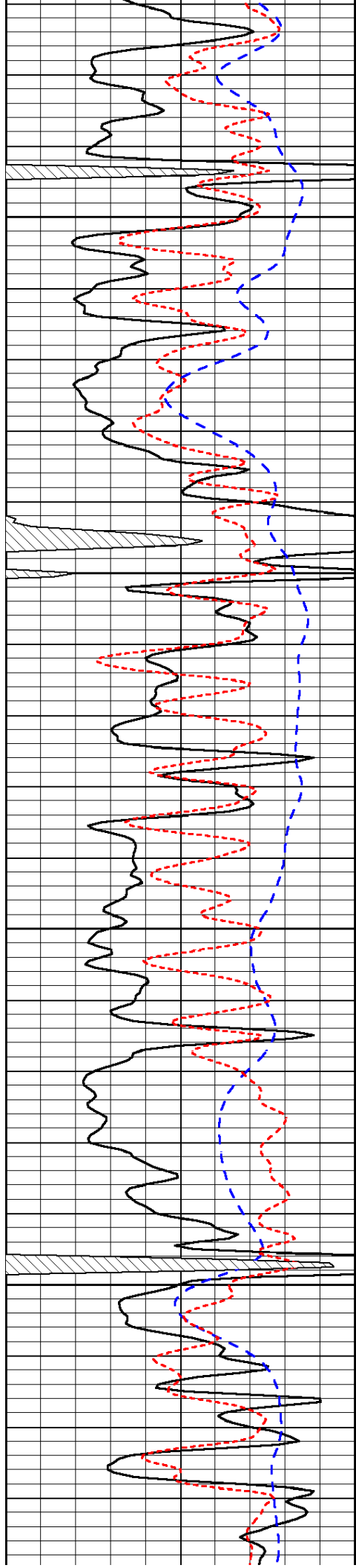
-32

-31

-31

-31



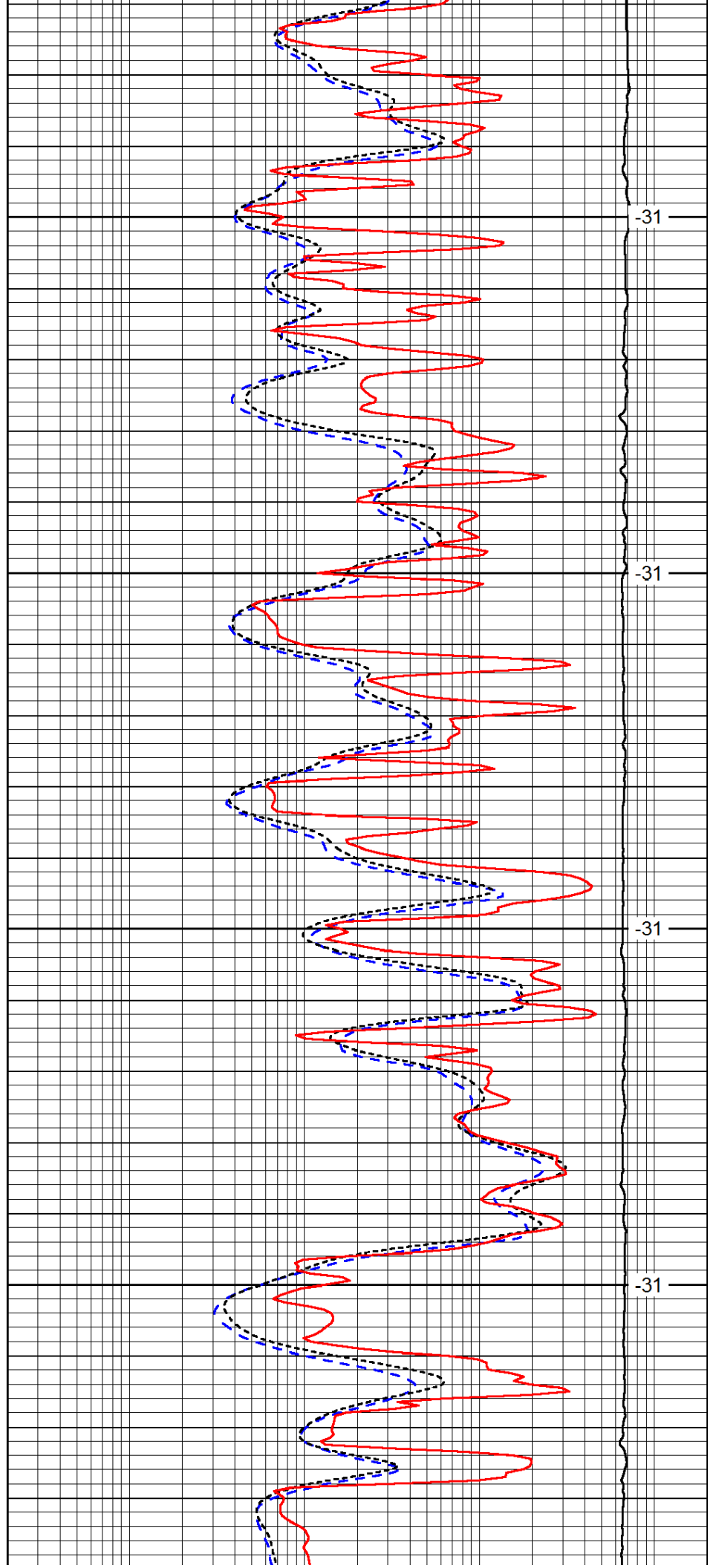


3550

3600

3650

3700

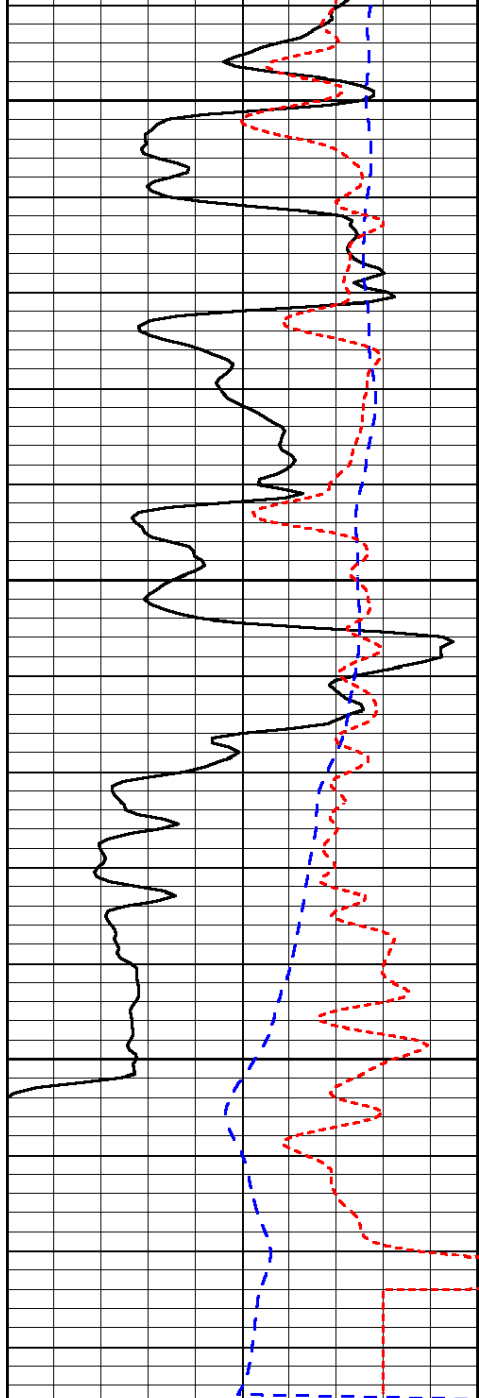


-31

-31

-31

-31

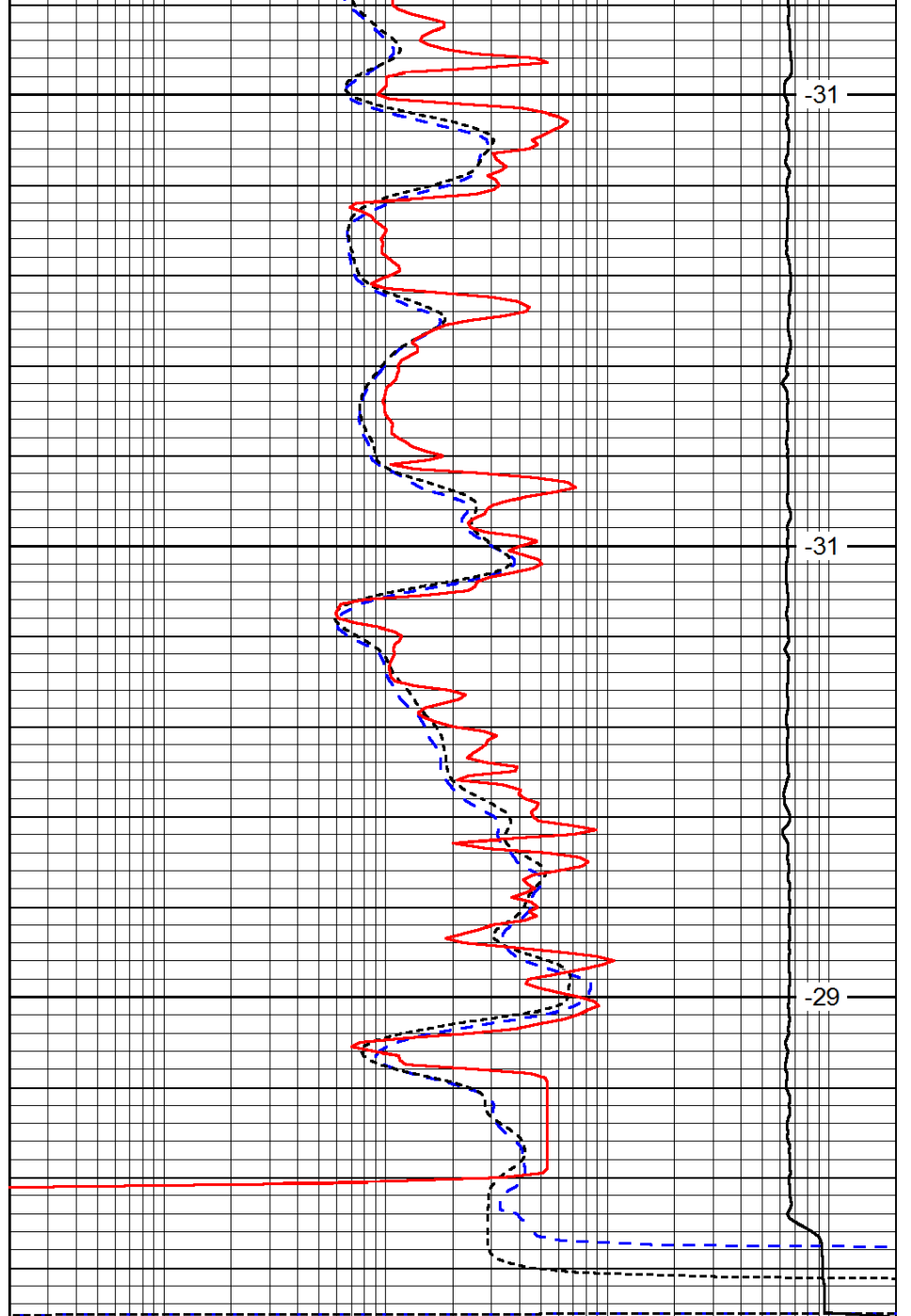


0	Gamma Ray	150
-200	SP (mV)	0
-160	RxoRt	40

3750

3800

3850



-31

-31

-29

0.2	Deep Resistivity	2000
0.2	Medium Resistivity	2000
0.2	Shallow Resistivity	2000
15000	Line Tension	0

LSPD