



Pioneer Energy Services

# Microresistivity Log

15-051-26,549-00-00

API No.

Company **Staab Oil Company**  
 Well **Yocemento Benno #1**  
 Field **Wildcat**  
 County **Eliis** State **Kansas**

Location  
 NE-SE-NW-NE  
 830' FNL & 1370' FEL

Sec: 28 Twp: 12S Rge: 19W

Other Services  
 CNL/CDL  
 DIL

Permanent Datum Ground Level Elevation 2162  
 Log Measured From Kelly Bushing 5 Ft. Above Perm. Datum  
 Drilling Measured From Kelly Bushing

Elevation  
 K.B. 2167  
 D.F. 2162  
 G.L. 2162

|                        |               |             |
|------------------------|---------------|-------------|
| Date                   | 7/9/2013      |             |
| Run Number             | Two           |             |
| Depth Driller          | 3875          |             |
| Depth Logger           | 3875          |             |
| Bottom Logged Interval | 3874          |             |
| Top Log Interval       | 3100          |             |
| Casing Driller         | 8.625 @ 217   |             |
| Casing Logger          | 214           |             |
| Bit Size               | 7.875         |             |
| Type Fluid in Hole     | Chemical      |             |
| Salinity,ppm CL        | 1,900         |             |
| Density / Viscosity    | 9.1 63        |             |
| pH / Fluid Loss        | 10.5 6.8      |             |
| Source of Sample       | Flowline      |             |
| Rm @ Meas. Temp        | .50 @ 88      |             |
| Rmf @ Meas. Temp       | .38 @ 88      |             |
| Rmc @ Meas. Temp       | .68 @ 88      |             |
| Source of Rmf / Rmc    | Charts        |             |
| Rm @ BHT               | .38 @ 115     |             |
| Operating Rig Time     | 4 Hours       |             |
| Max Rec. Temp. F       | 115           |             |
| Equipment Number       | 15            |             |
| Location               | Hays          |             |
| Recorded By            | J. Hennickson | D. Kerr     |
| Witnessed By           | Randy Kilian  | Frank Staab |

<<< Fold Here >>>

All interpretations are opinions based on inferences from electrical or other measurements and we cannot and do not guarantee the accuracy or correctness of any interpretation, and we shall not, except in the case of gross or willful negligence on our part, be liable or responsible for any loss, costs, damages, or expenses incurred or sustained by anyone resulting from any interpretation made by any of our officers, agents or employees. These interpretations are also subject to our general terms and conditions set out in our current Price Schedule.

### Comments

Thank you for using Pioneer Energy Services  
[www.pioneerenergy.com](http://www.pioneerenergy.com)  
 785 625 3858

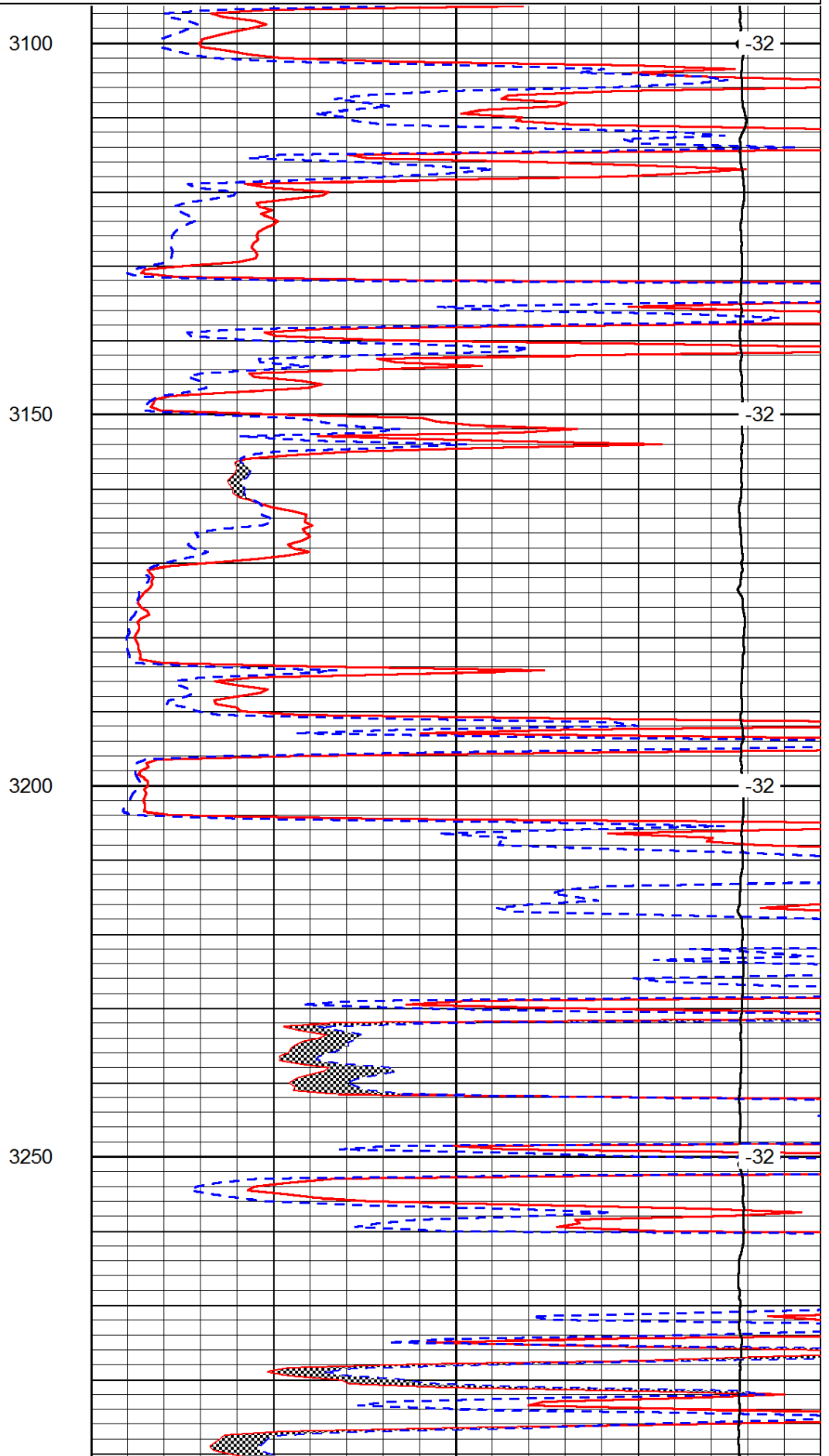
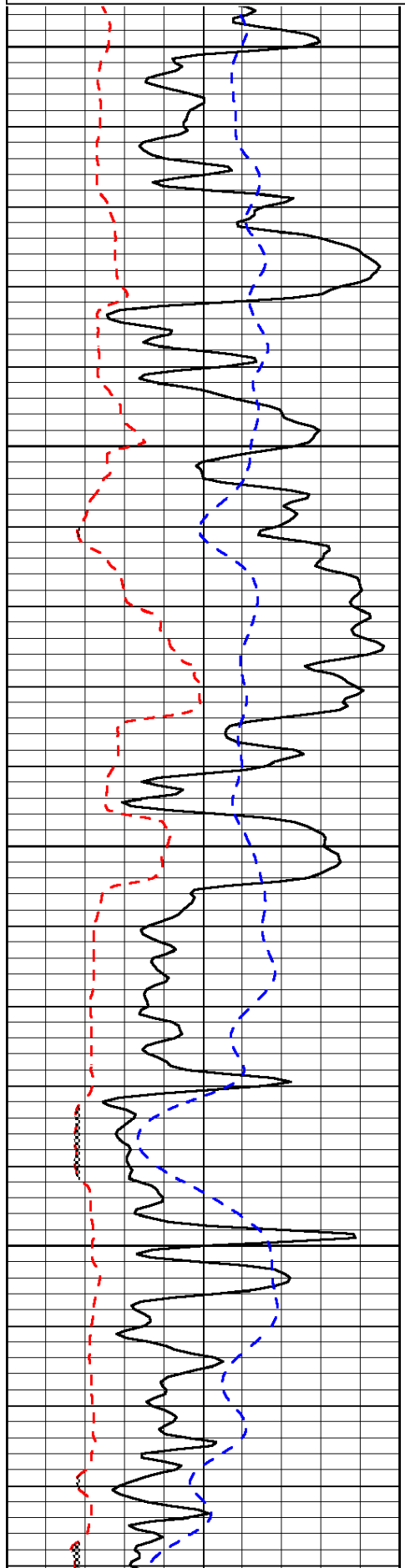
Yocemento Exit  
 4 1/2 North, 1/2 West, South Into

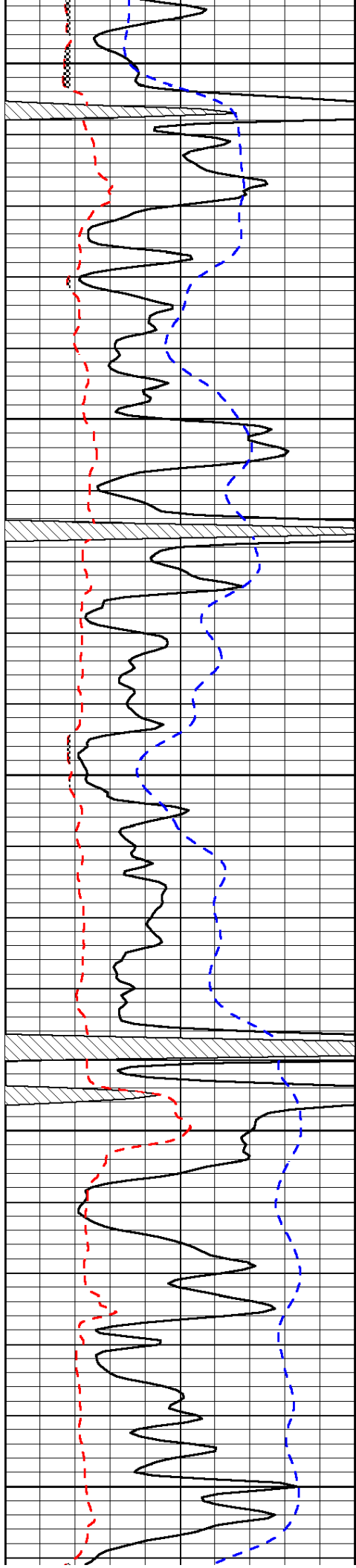
Database File: c:\warrior\data\staab\_yocemento benno #1\staaboil\_yocemento\_benno\_1hd.db  
 Dataset Pathname: DIL/staabstk  
 Presentation Format: micro  
 Dataset Creation: Tue Jul 09 08:13:00 2013  
 Charted by: Depth in Feet scaled 1:240

|      |                          |     |
|------|--------------------------|-----|
| 0    | Gamma Ray                | 150 |
| 6    | Micro Log Caliper (GAPI) | 16  |
| -200 | SP (mV)                  | 0   |

|       |                     |    |
|-------|---------------------|----|
| 0     | Micro Inverse 1 X 1 | 40 |
| 0     | Micro Normal 2"     | 40 |
| 15000 | Line Weight         | 0  |

LSPD





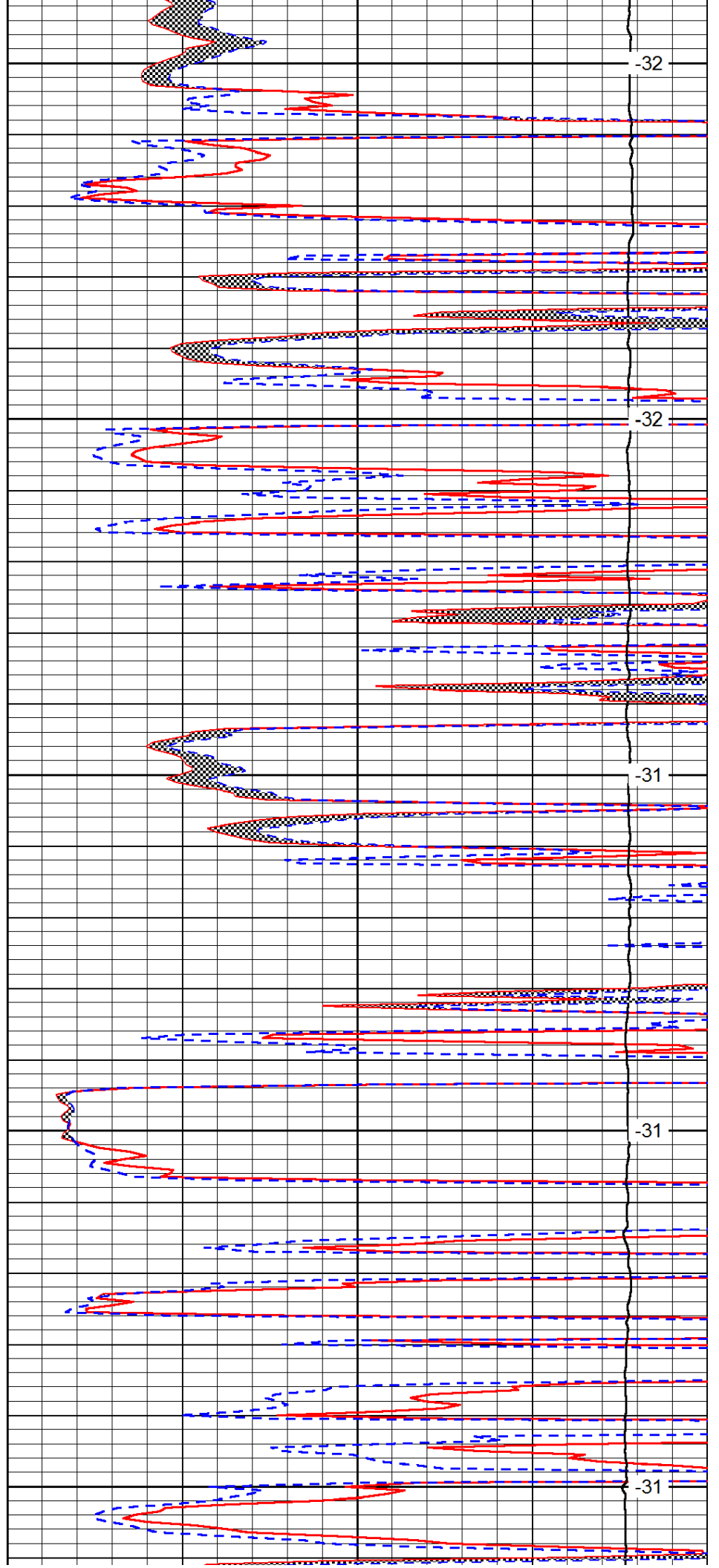
3300

3350

3400

3450

3500



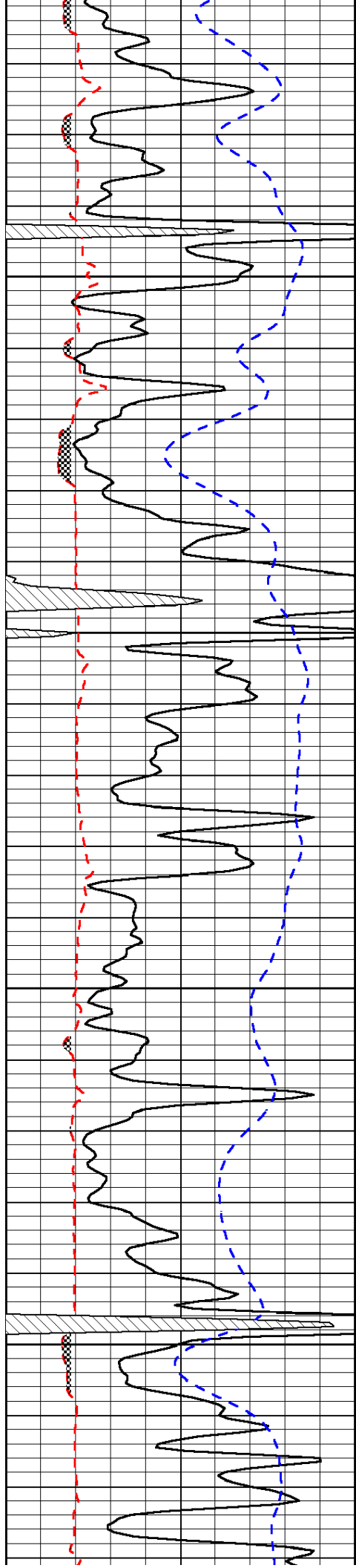
-32

-32

-31

-31

-31

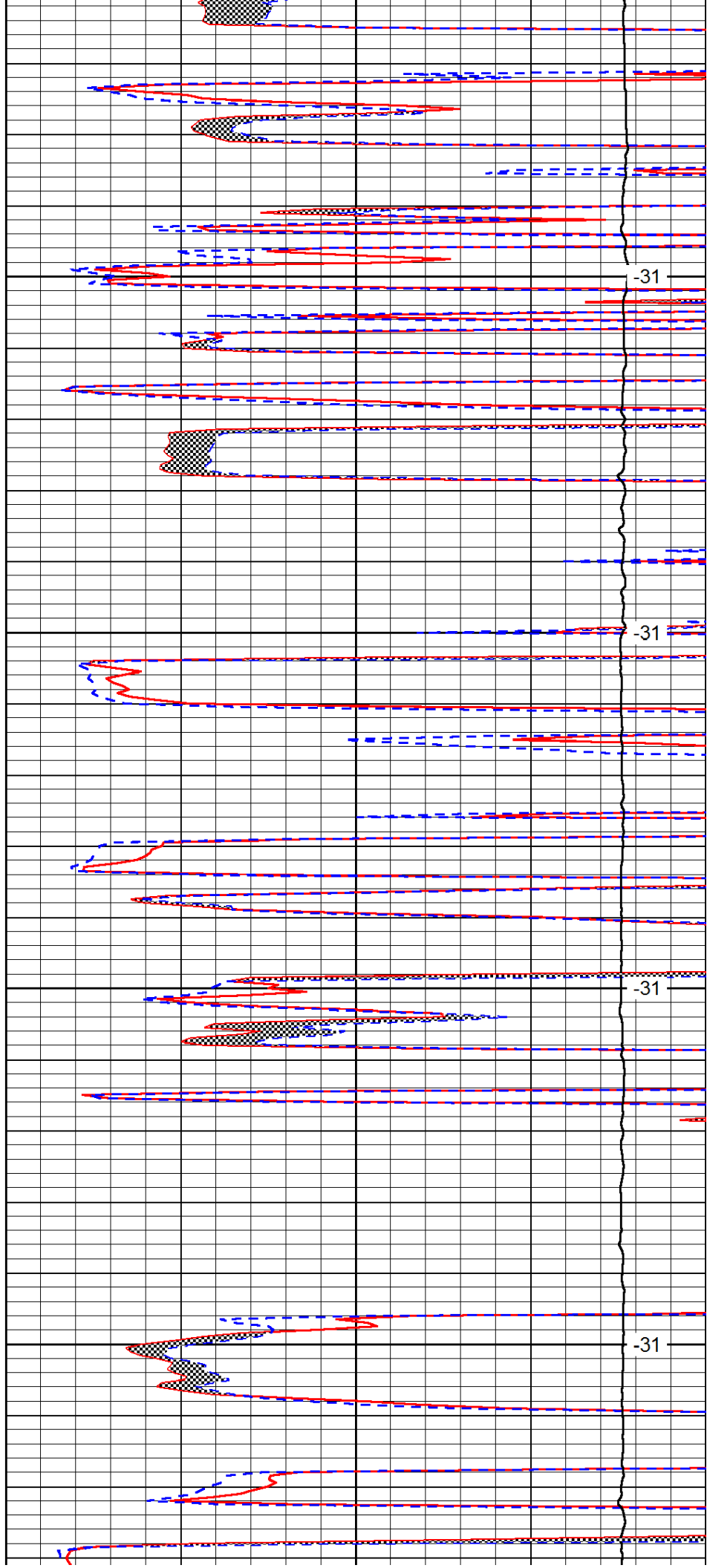


3550

3600

3650

3700

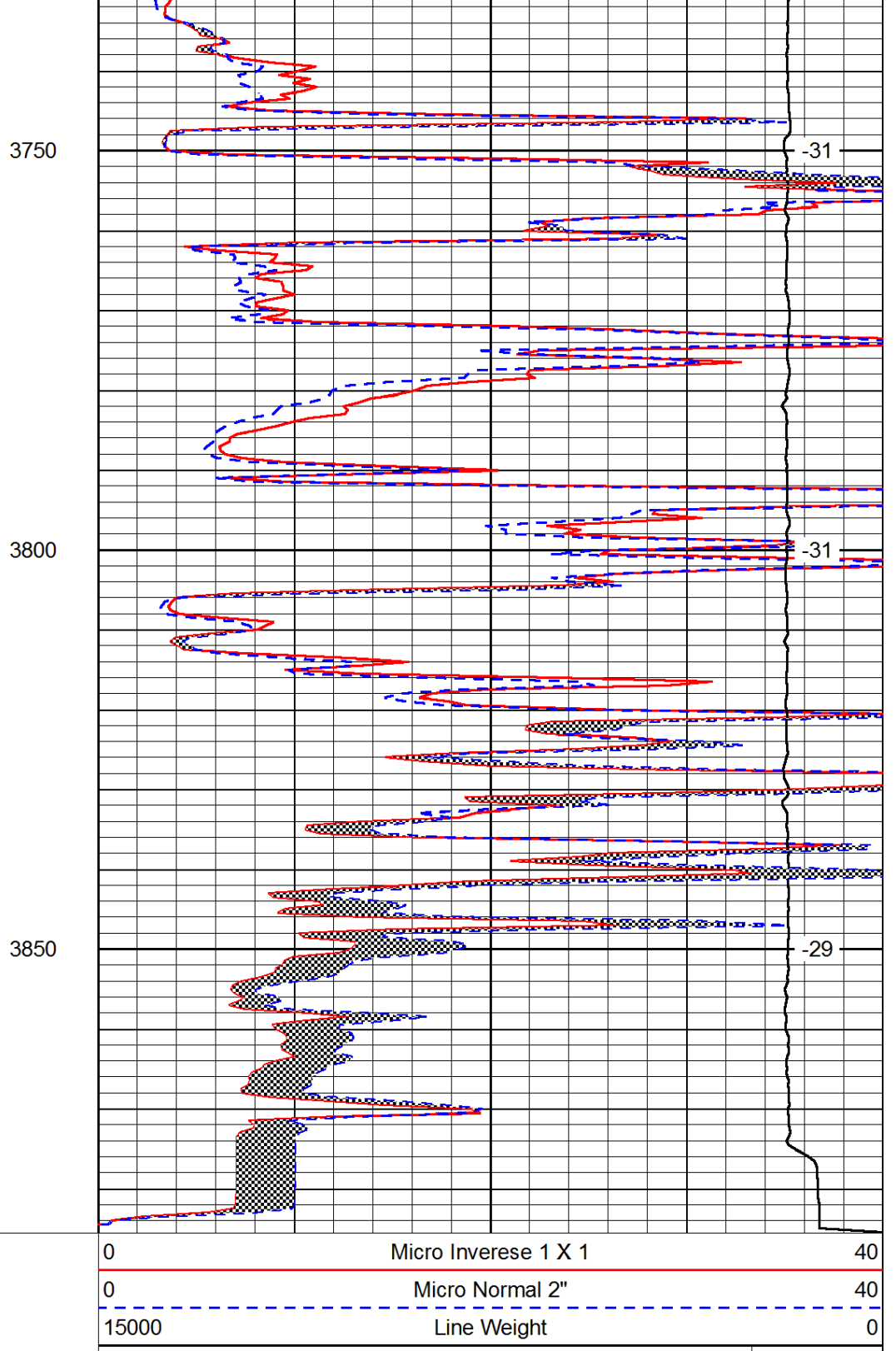
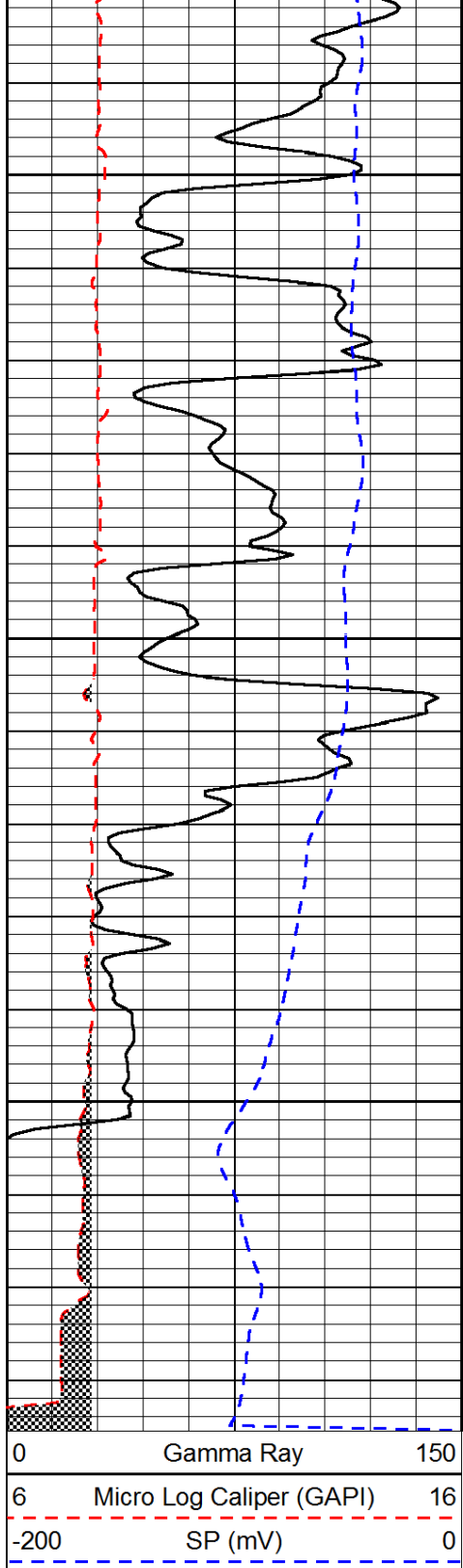


-31

-31

-31

-31



LSPD