



Pioneer Energy Services

Sonic Cement  
Bond Log

15-051-26,549-00-00

Company Staab Oil Company

Well Yocemento Benno No. 1

Field Wildcat

County Ellis

State Kansas

Location

NE-SE-NW-NE  
830' FNL & 1370' FEL

Other Services  
GRCBL/  
PERF

Sec: 28 Twp: 12S Rge: 19W

Elevation

Permanent Datum Ground Level Elevation 2162  
Log Measured From Kelly Bushing 5 Ft. Above Perm. Datum  
Drilling Measured From Kelly Bushing

K.B. 2167  
D.F.  
G.L. 2162

Run Number One

Date Survey 07-29-13

Date Cementing 07-10-13

Type Cementing Operation Primary

Depth Driller 3875

Depth Logger 3842

Logged Interval 3842 to 3200

Casing Driller 5.5 @ TD

Float Collar -- D.V. Tool 2303

Squeeze Depth

Amount & Type Cement

Amount & Type Admix

Type Fluid In Hole Water

Fluid Level 400

Salinity PPM CL

Weight lb/gal -- Vis. 3203

Approx. Logged Cement Top

Calculated Cement Top

Max. Hole Temperature 115

Tool No. D2

Spacing Recorded 3-5

Equipment -- Location 71 Hays

Recorded By Dean Herzog

Witnessed By Frank Staab

<<< Fold Here >>>

All interpretations are opinions based on inferences from electrical or other measurements and we cannot and do not guarantee the accuracy or correctness of any interpretation, and we shall not, except in the case of gross or willful negligence on our part, be liable or responsible for any loss, costs, damages, or expenses incurred or sustained by anyone resulting from any interpretation made by any of our officers, agents or employees. These interpretations are also subject to our general terms and conditions set out in our current Price Schedule.

Comments

Thank you for using Pioneer Energy Services  
(785) 625-3858

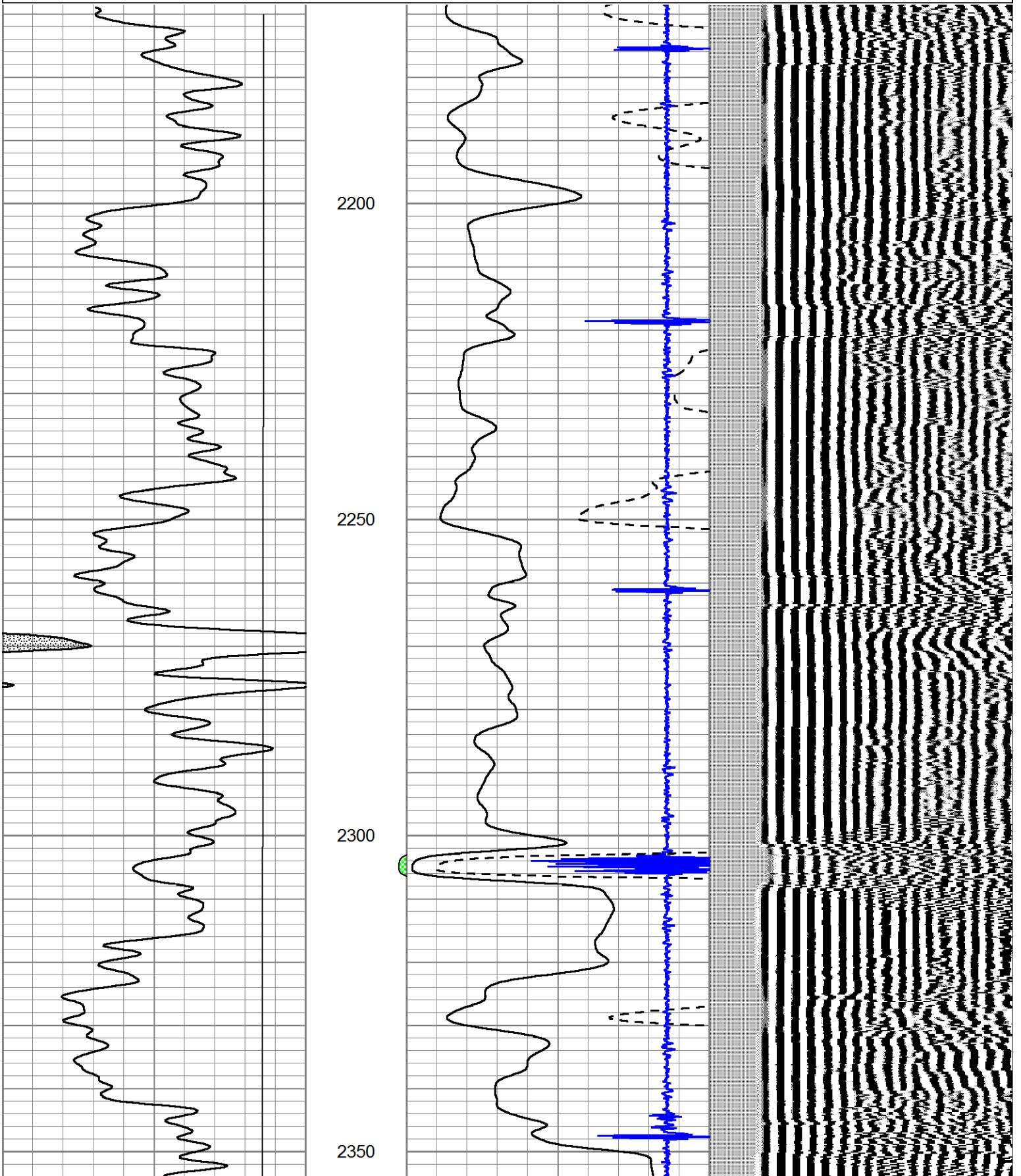
Yocemento Exit,  
4 1/2 North, 1/2 West. South Into

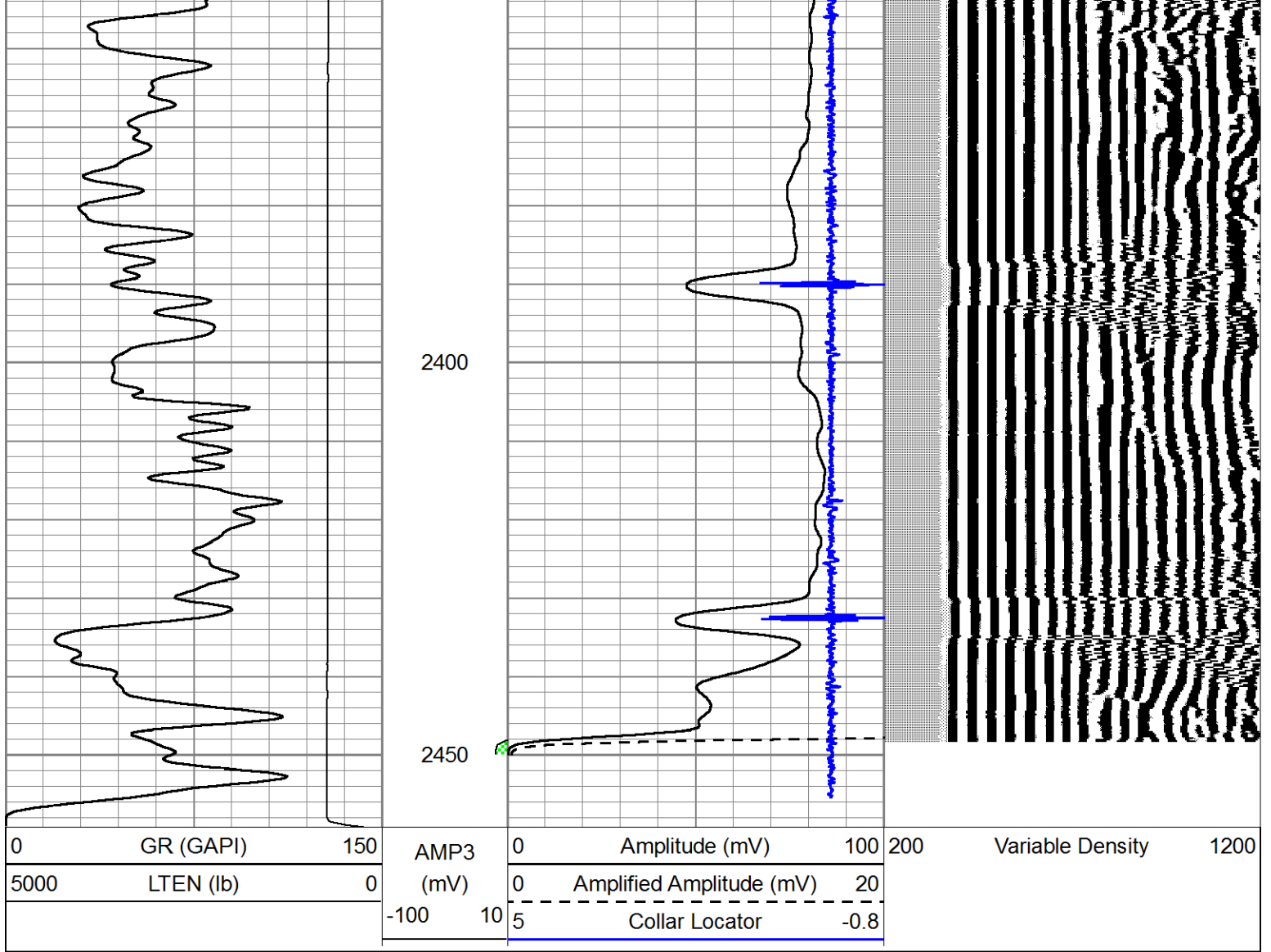


DV Tool @ 2303

Database File: stabboil\_yocemento\_benno\_no1.db  
 Dataset Pathname: grcbl/pass4  
 Presentation Format: cbl dig  
 Dataset Creation: Mon Jul 29 18:49:12 2013 by Log SCH 111116  
 Charted by: Depth in Feet scaled 1:240

0	GR (GAPI)	150	AMP3	0	Amplitude (mV)	100	200	Variable Density	1200
5000	LTEN (lb)	0	(mV)	0	Amplified Amplitude (mV)	20			
			-100 10	5	Collar Locator	-0.8			



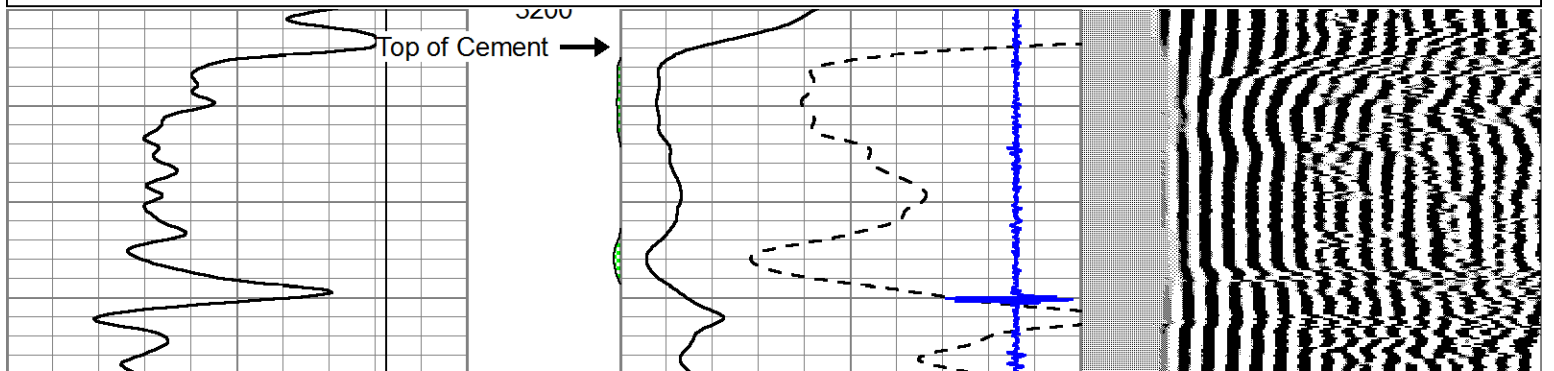
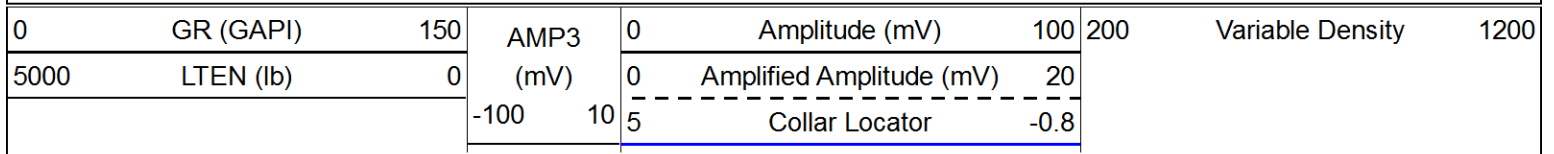


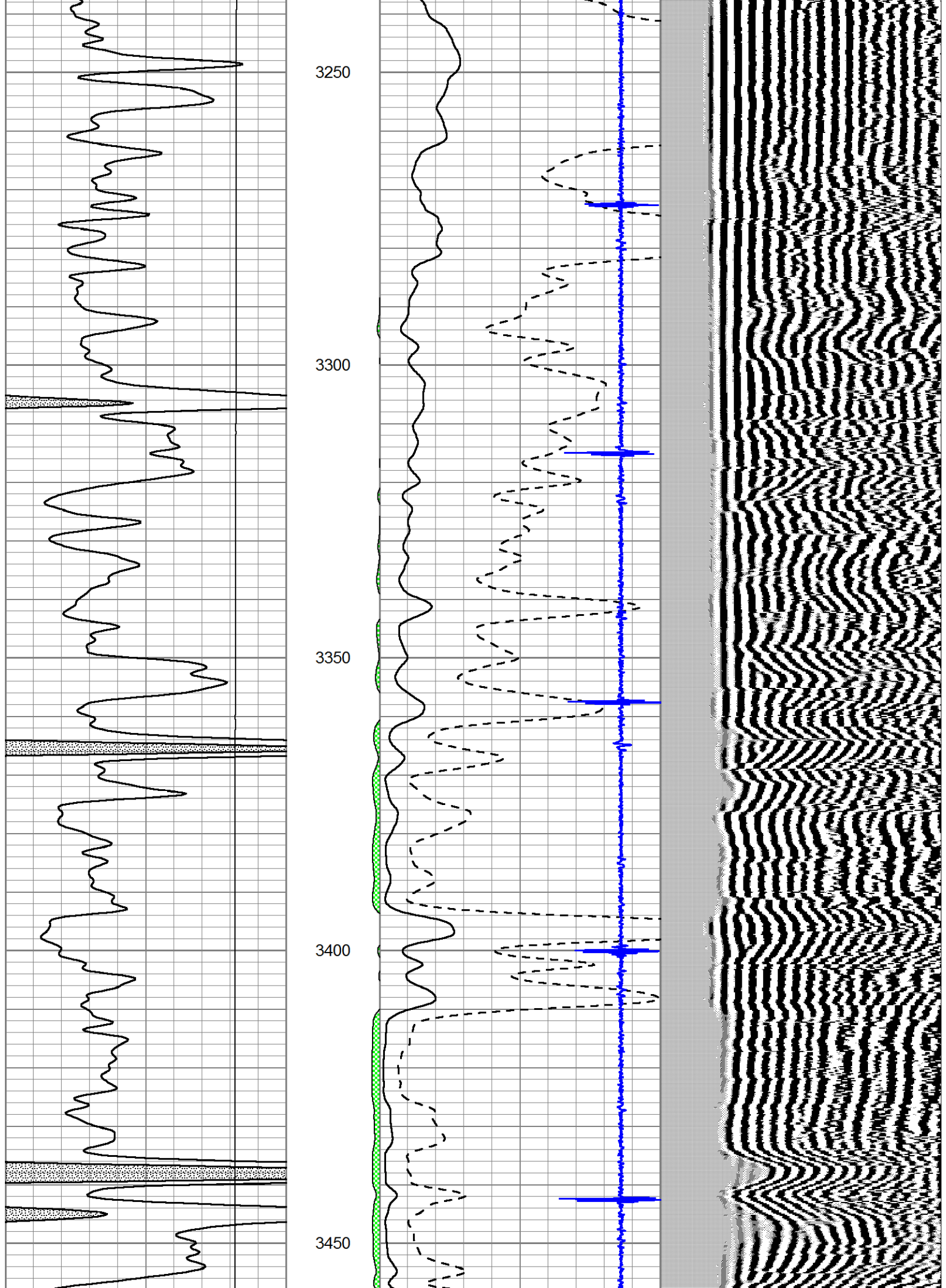


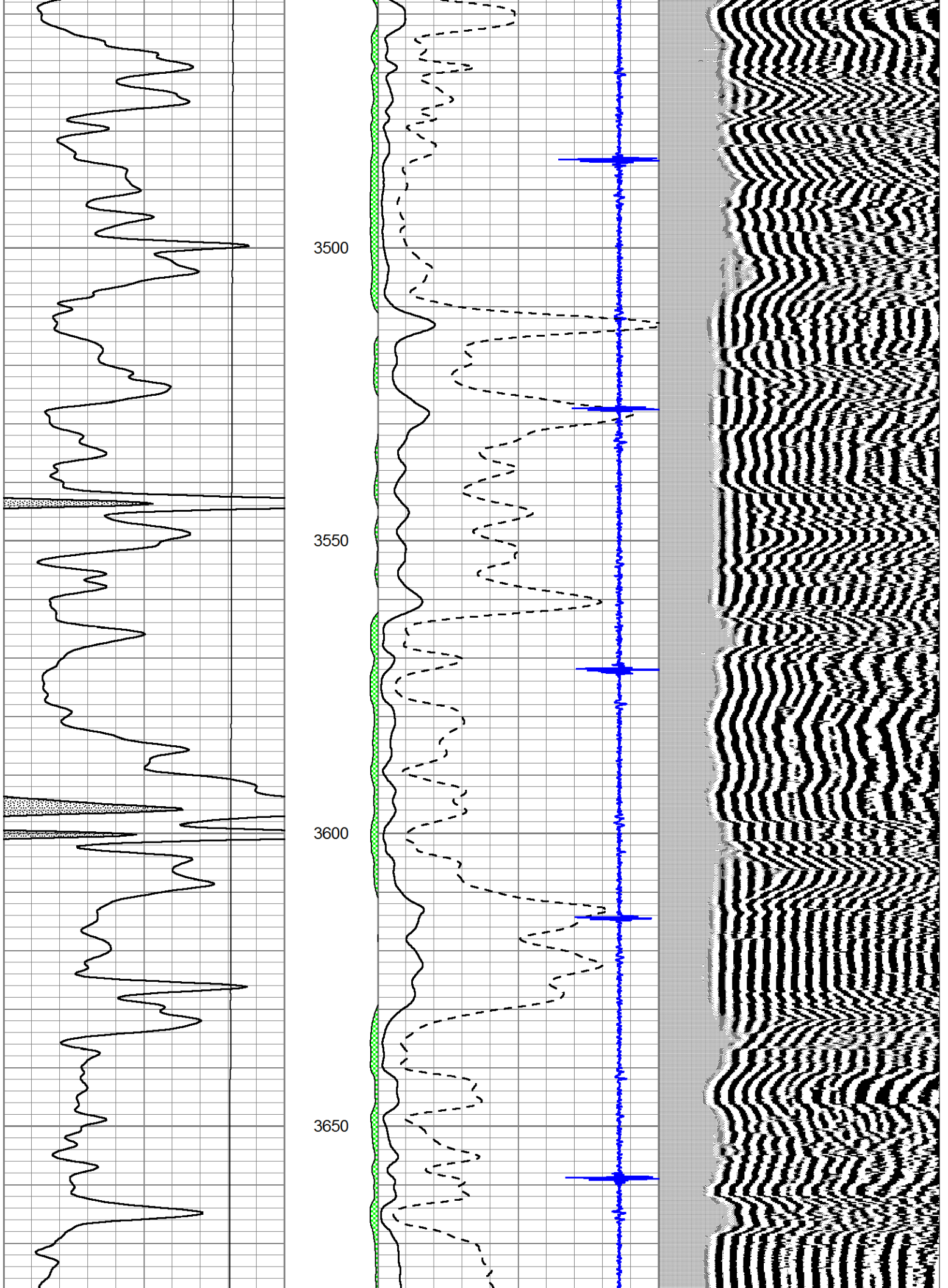
**PIONEER**  
Pioneer Energy Services

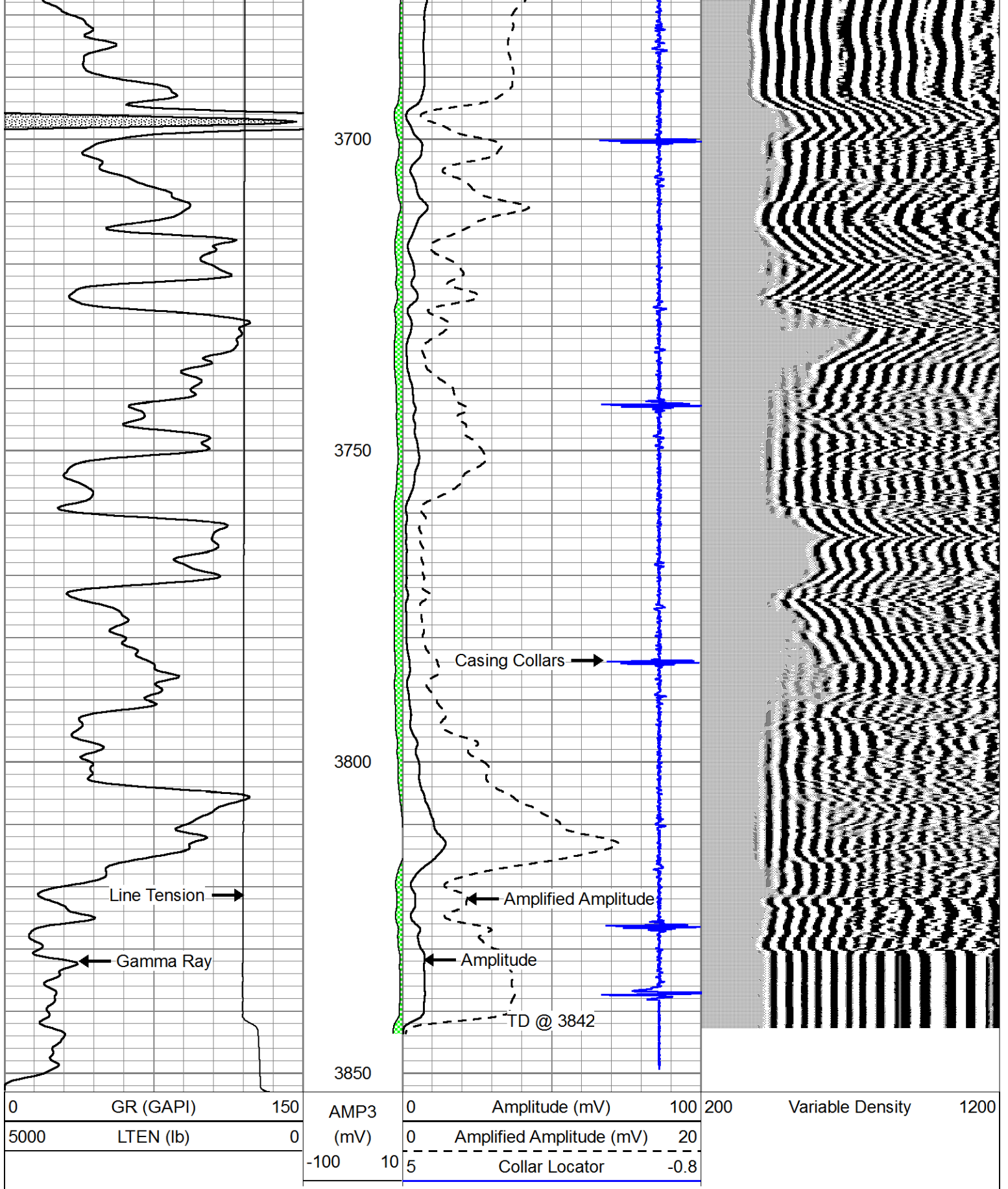
# Main Pass

Database File: stabboil\_yocemento\_benno\_no1.db  
 Dataset Pathname: grcb1/pass3  
 Presentation Format: cbldig  
 Dataset Creation: Mon Jul 29 18:31:27 2013 by Log SCH 111116  
 Charted by: Depth in Feet scaled 1:240









# Repeat Section

Database File: stab301\_documents\_bchm11161.d5  
 Dataset Pathname: grcb1/pass2  
 Presentation Format: cbldig  
 Dataset Creation: Mon Jul 29 18:25:02 2013 by Log SCH 111116  
 Charted by: Depth in Feet scaled 1:240

0	GR (GAPI)	150	AMP3	0	Amplitude (mV)	100	200	Variable Density	1200
5000	LTEN (lb)	0	(mV)	0	Amplified Amplitude (mV)	20			
			-100 10	5	Collar Locator	-0.8			

