



Pioneer Energy Services

Dual Induction Log

15-007-24,056-00-00

API No.

Company N-10 Exploration, LLC

Well Medicine River Ranch 'E' #2

Field Landis

County Barber State

Kansas

Location 1075' FNL & 817' FEL

Other Services
CNL/CDL

Sec: 22 Twp: 34S Rge: 11W

Permanent Datum Ground Level Elevation 1342
Log Measured From Kelly Bushing 10 Ft. Above Perm. Datum
Drilling Measured From Kelly Bushing

Elevation

K.B. 1352
D.F. 1342
G.L. 1342

Date 8/23/2013

Run Number One

Depth Driller 5060

Depth Logger 5060

Bottom Logged Interval 5059

Top Log Interval 250

Casing Driller 8.625 @ 266

Casing Logger 264

Bit Size 7.875

Type Fluid in Hole Chemical

Salinity, ppm CL 6000

Density / Viscosity 9.4 47

pH / Fluid Loss 10.0 9.8

Source of Sample Flowline

Rm @ Meas. Temp 0.70 @ 88

Rmf @ Meas. Temp 0.53 @ 88

Rmc @ Meas. Temp 0.95 @ 88

Source of Rmf / Rmc Charts

Rm @ BHT 0.49 @ 127

Operating Rig Time 2 1/2 Hours

Max Rec. Temp. F 127

Equipment Number 15

Location Hays

Recorded By D. Kerr

Witnessed By Tim Pierce

<<< Fold Here >>>

All interpretations are opinions based on inferences from electrical or other measurements and we cannot and do not guarantee the accuracy or correctness of any interpretation, and we shall not, except in the case of gross or willful negligence on our part, be liable or responsible for any loss, costs, damages, or expenses incurred or sustained by anyone resulting from any interpretation made by any of our officers, agents or employees. These interpretations are also subject to our general terms and conditions set out in our current Price Schedule.

Comments

Thank you for using Pioneer Energy Services
www.pioneerenergy.com
 785 625 3858

Medicine Lodge Ks, 8 1/2 South to Gerlane RD,
 South and East 7 to Bethel, 3 1/2 South to Angus RD,
 1 1/2 West, North Into

Database File: c:\warrior\data\n-10_medicine river ranch 'e' #2\n10_medicinriver_e_2hd.db
 Dataset Pathname: DIL\n10stk
 Presentation Format: dil2in
 Dataset Creation: Fri Aug 23 16:50:46 2013
 Charted by: Depth in Feet scaled 1:600

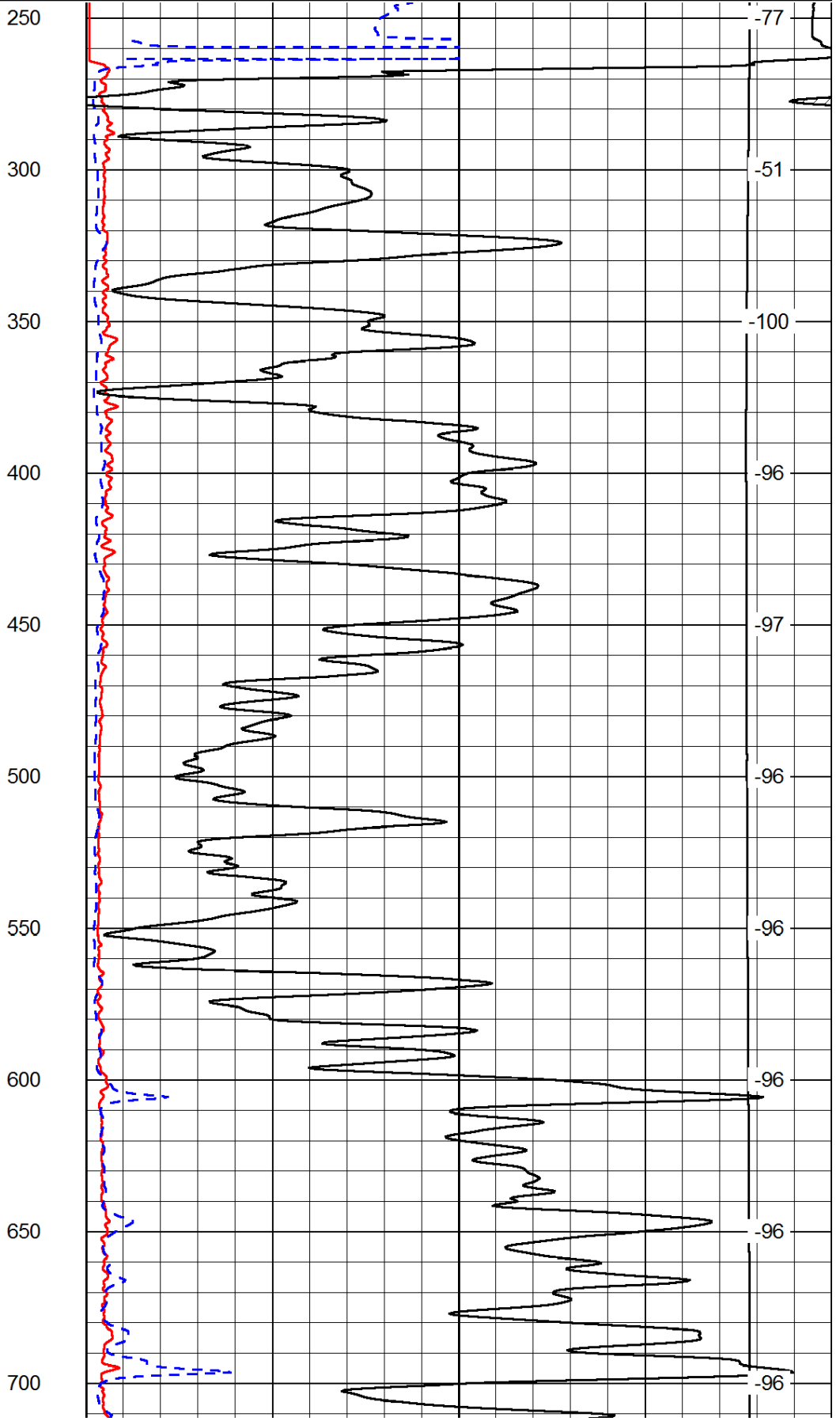
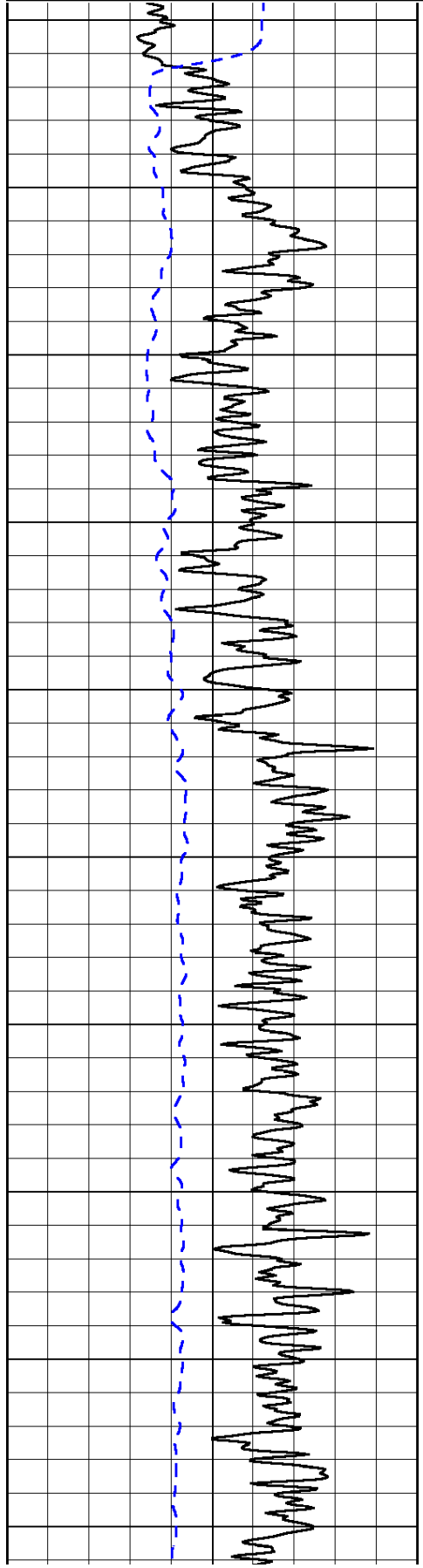
0	Gamma Ray	150
-200	SP (mV)	0

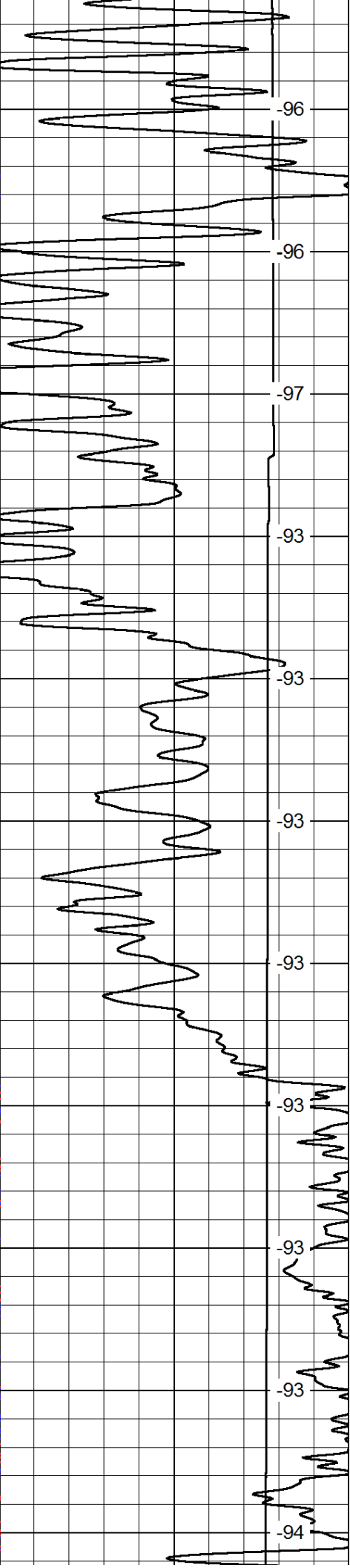
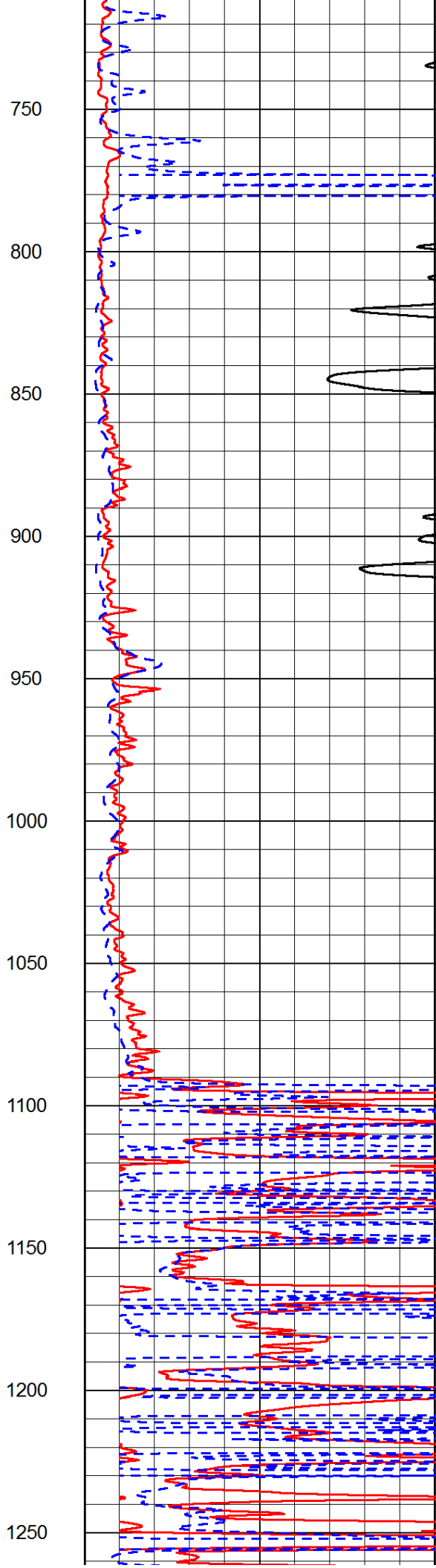
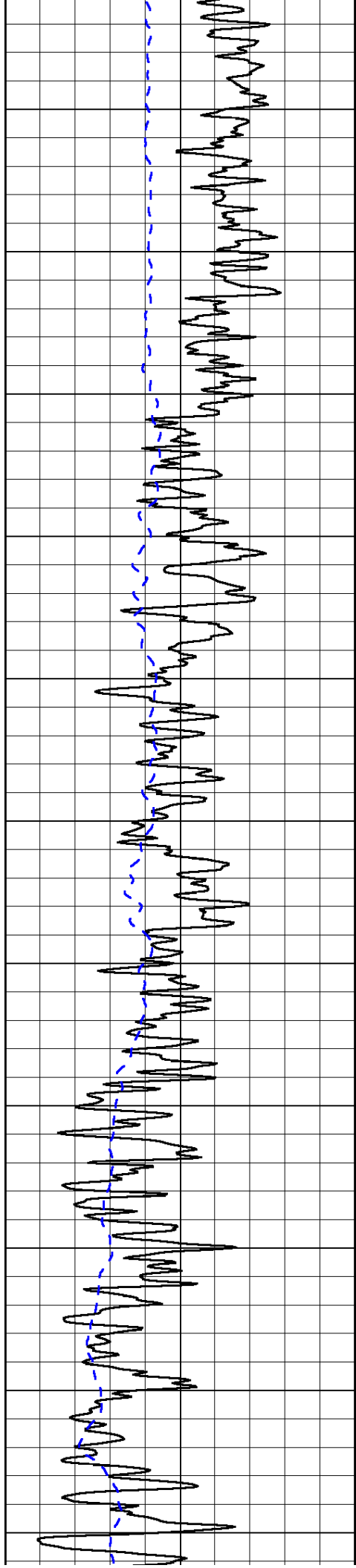
0	Shallow Resistivity	50
0	Deep Resistivity	50

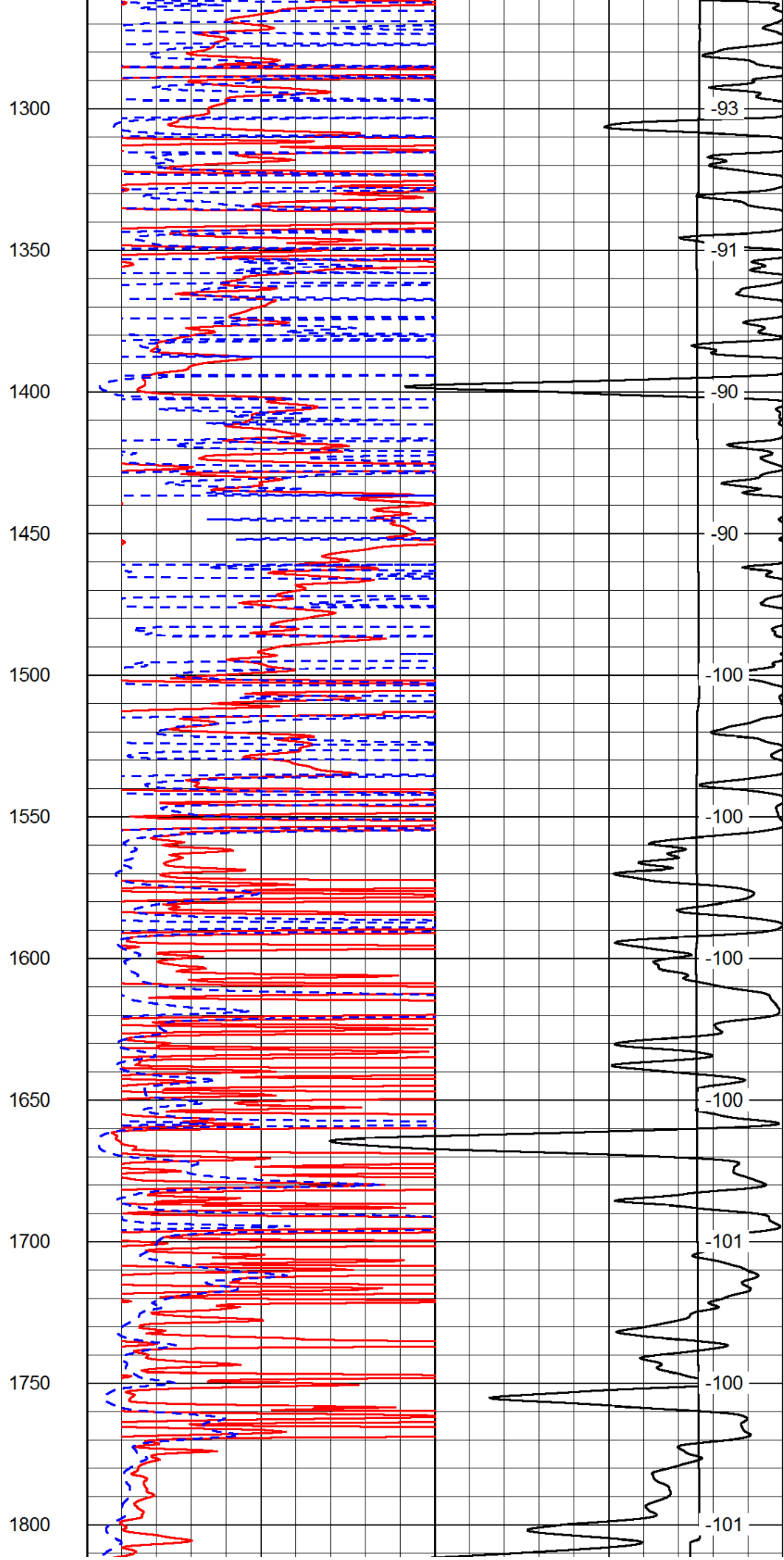
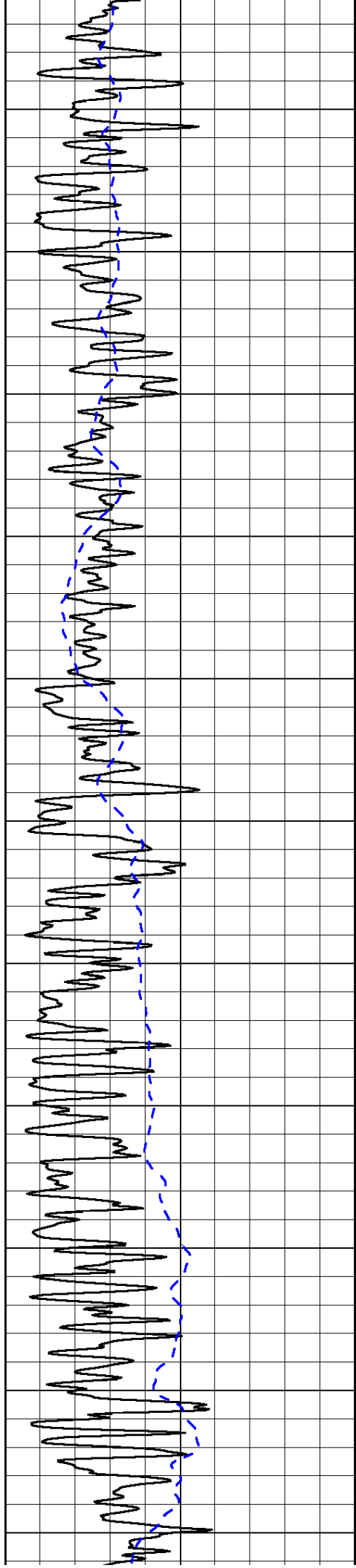
LSPD

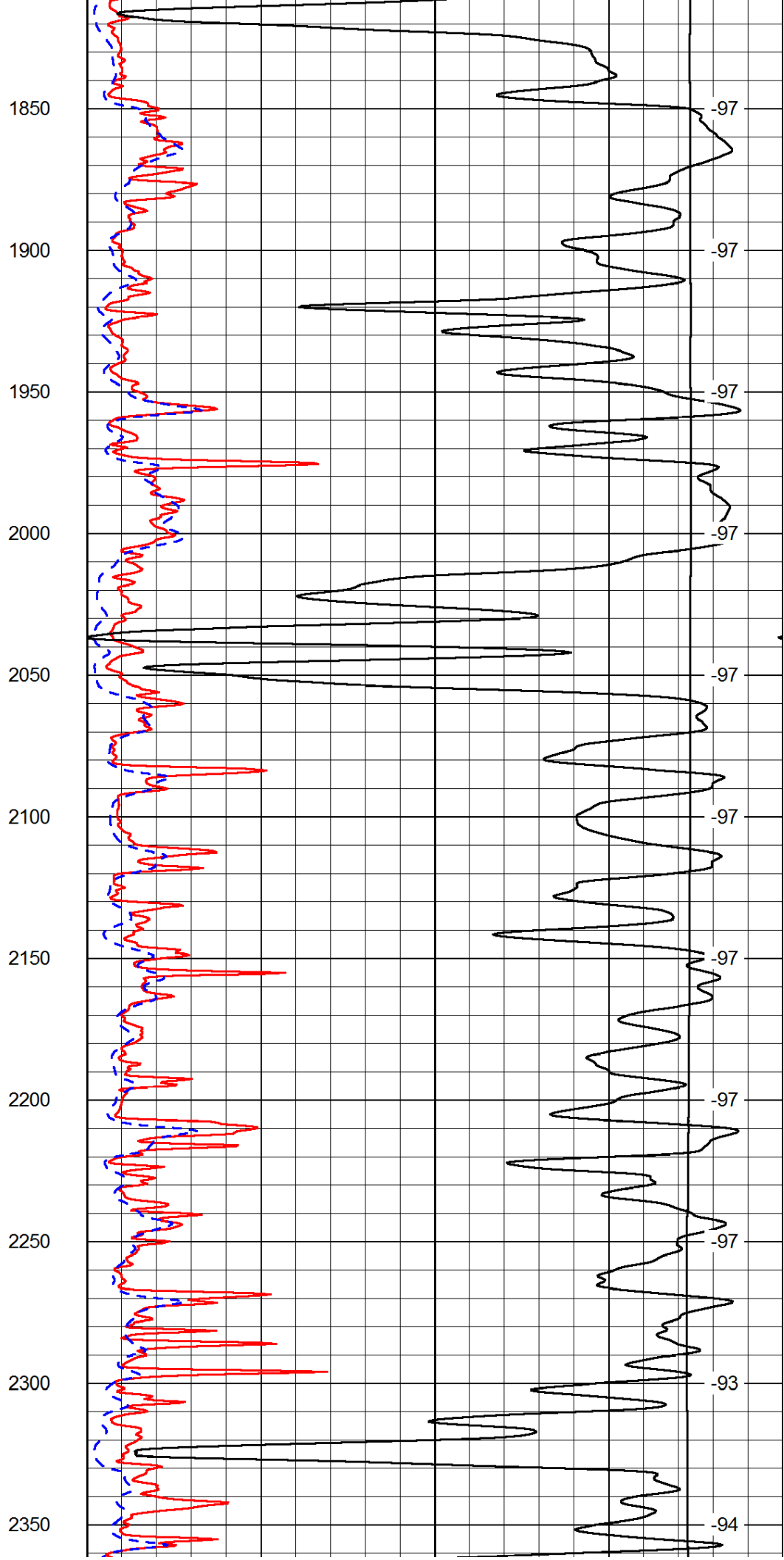
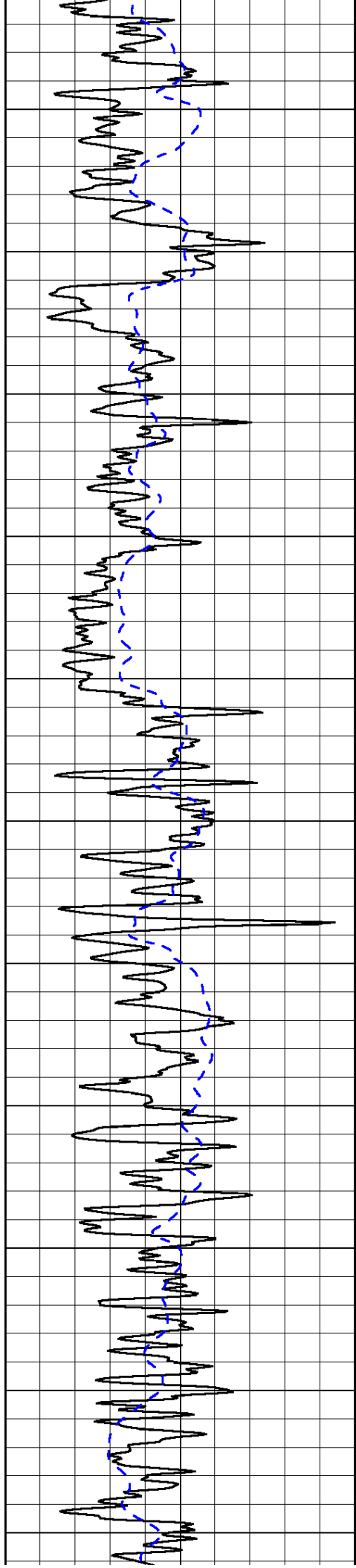
1000	Conductivity	0
15000	Line Tension	0

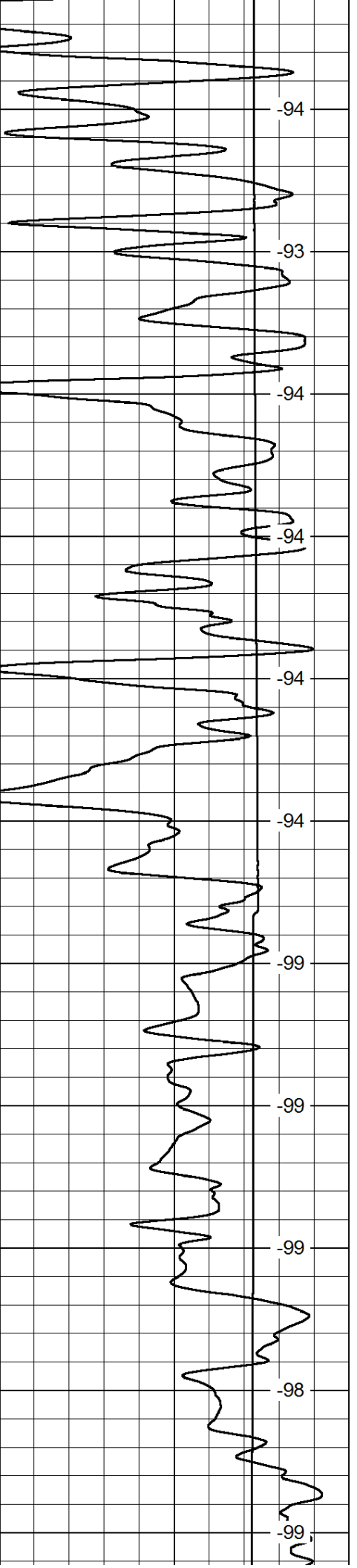
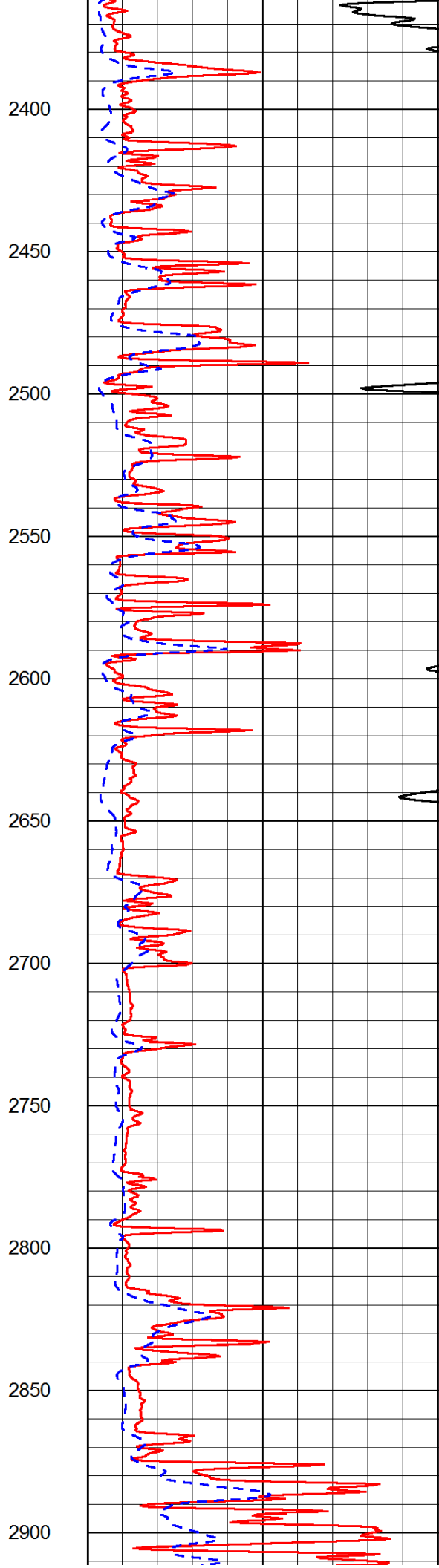
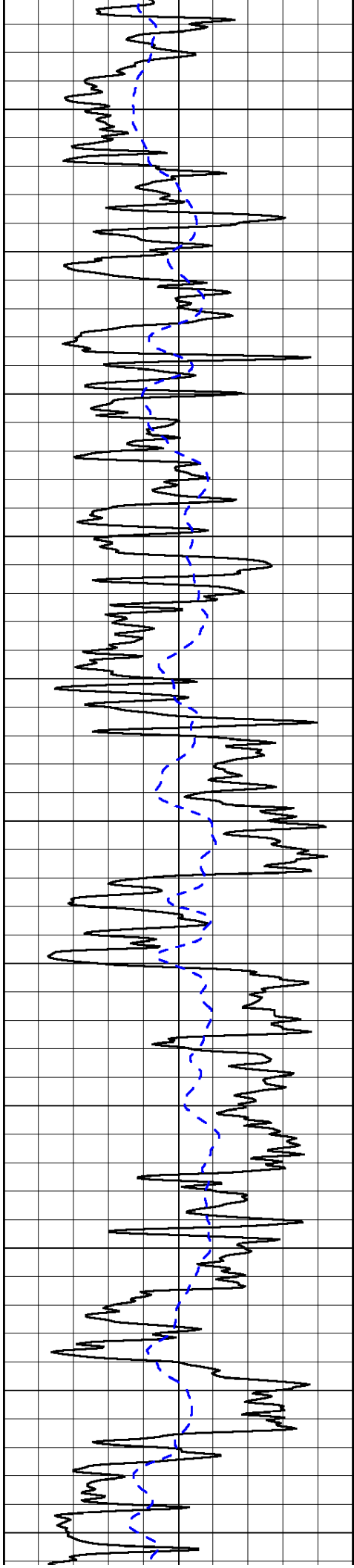
50	Shallow Resistivity	500
50	Deep Resistivity	500

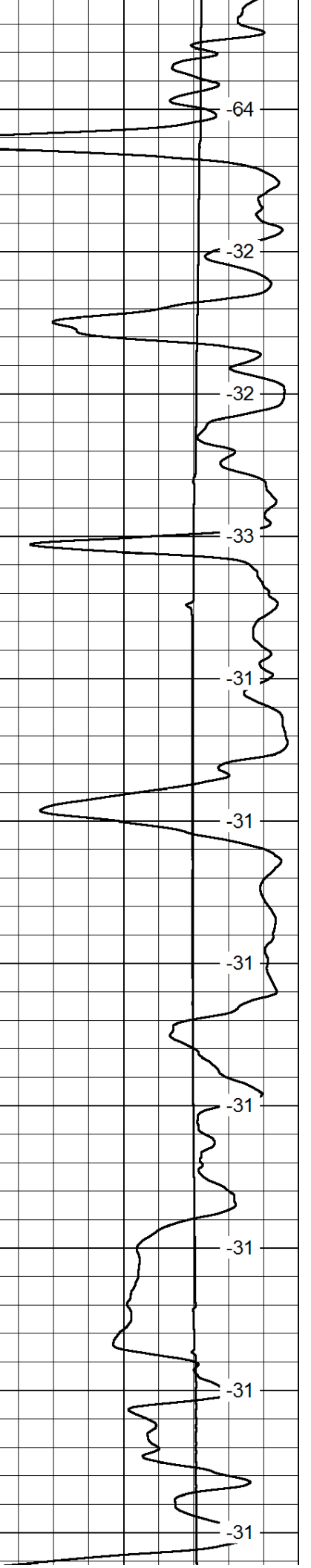
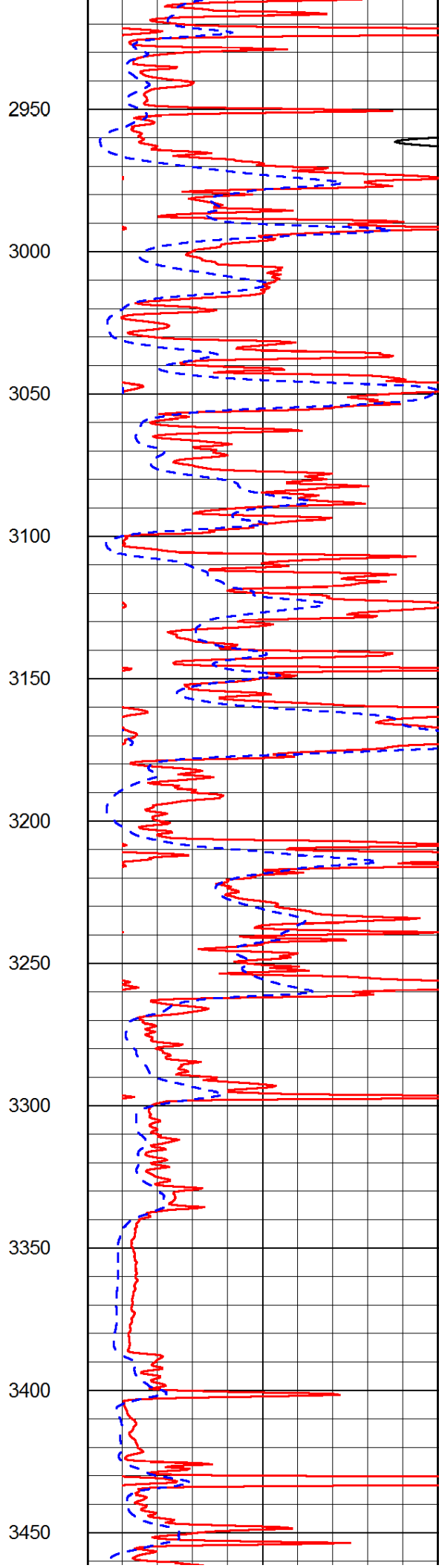
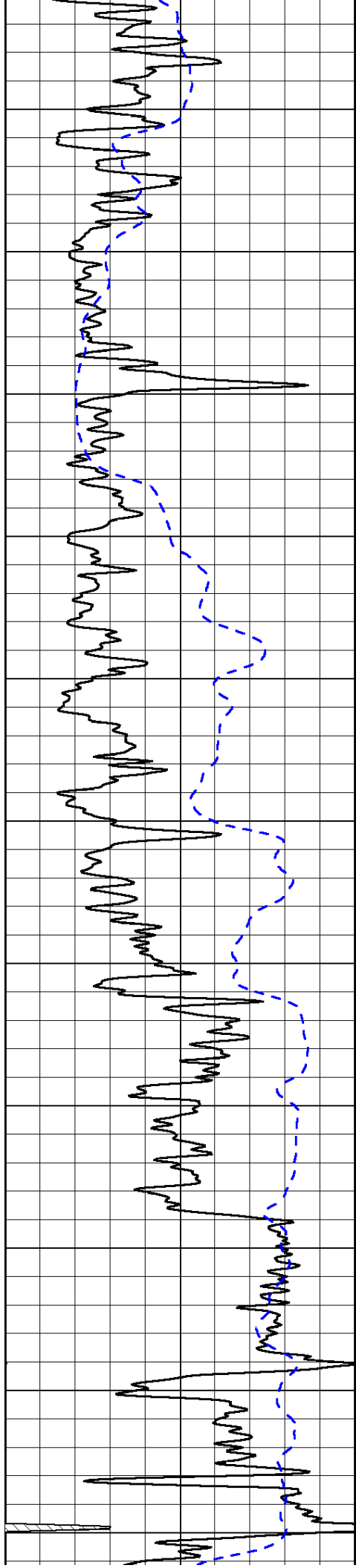


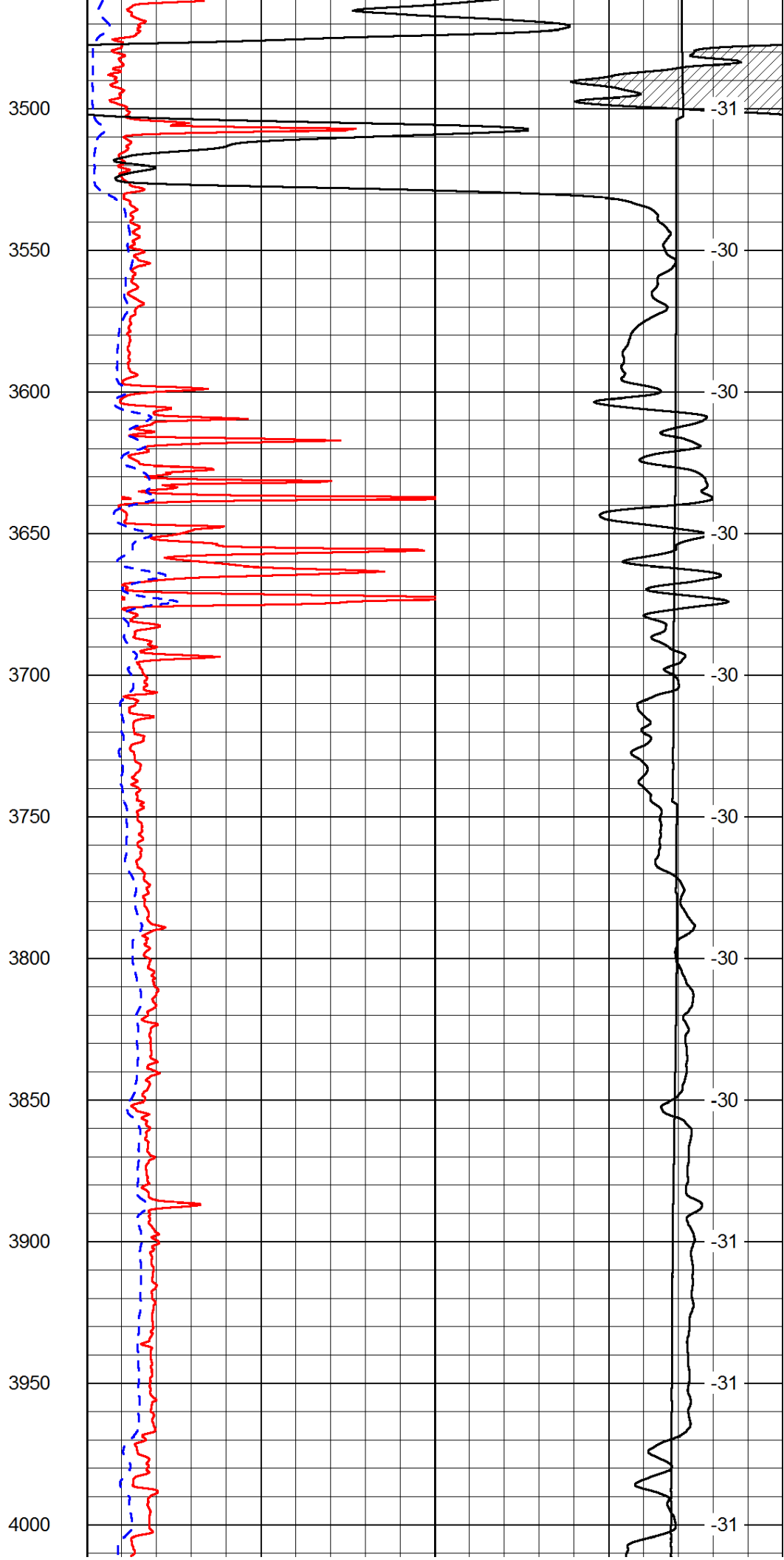
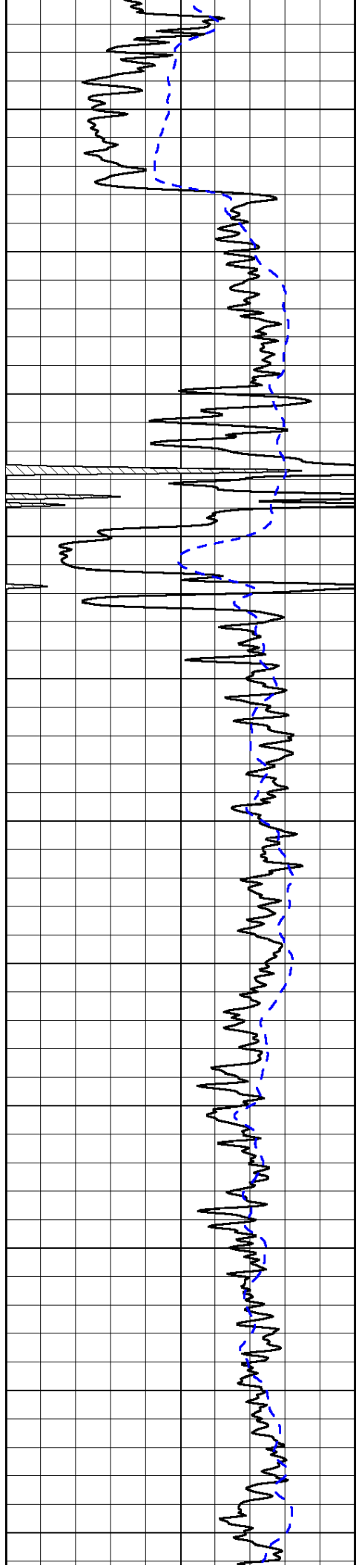


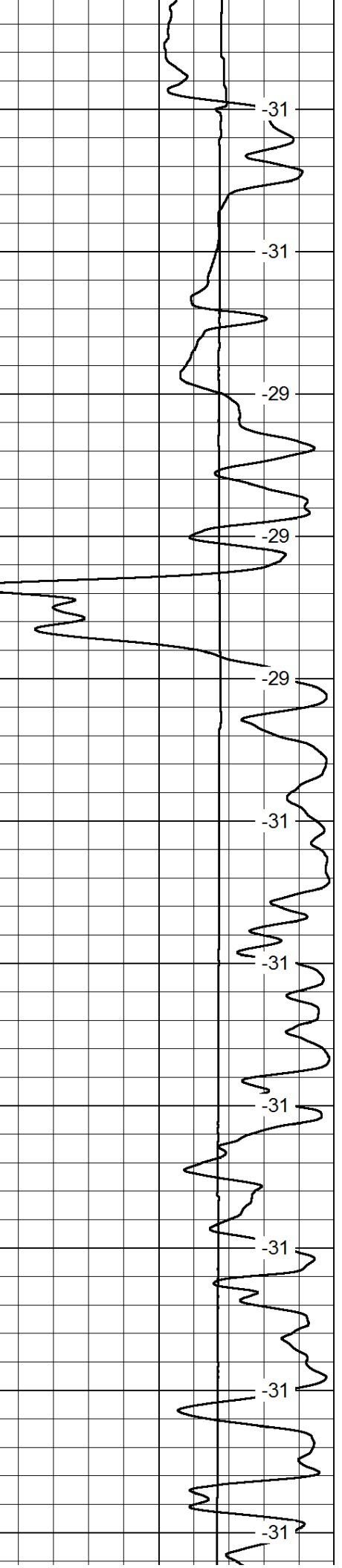
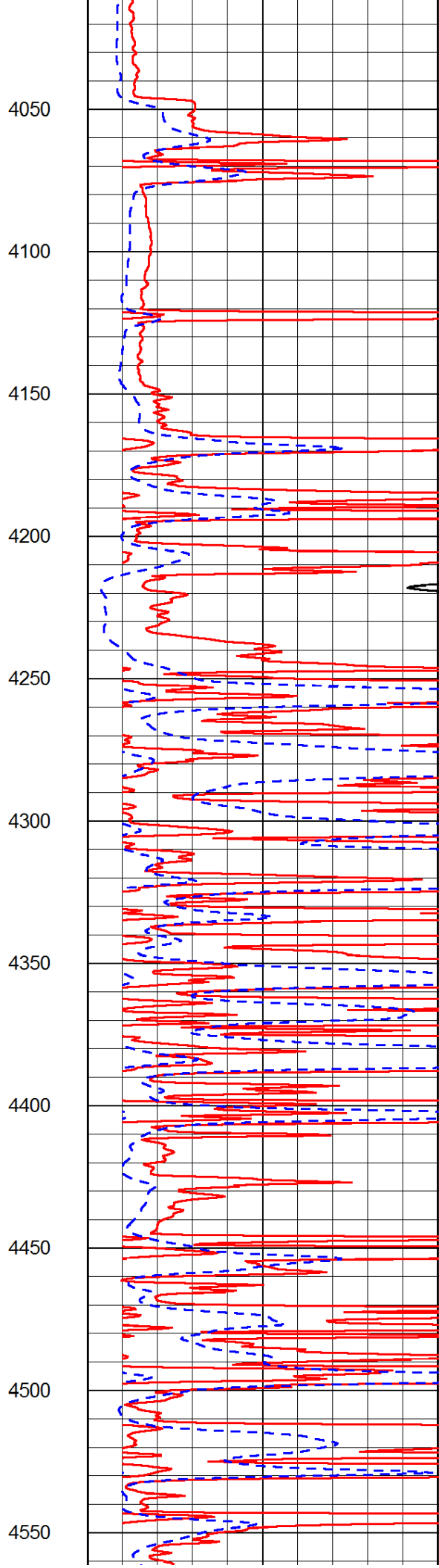
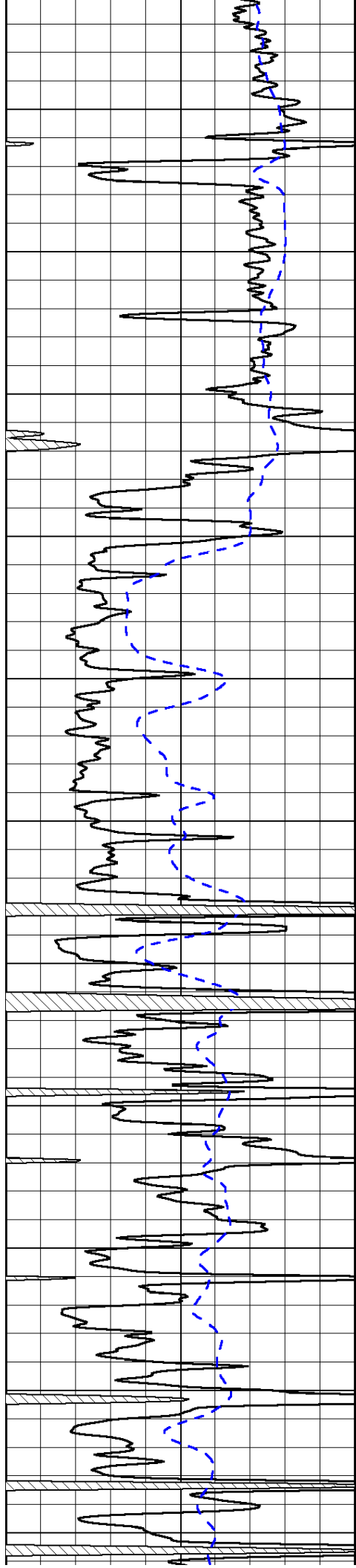


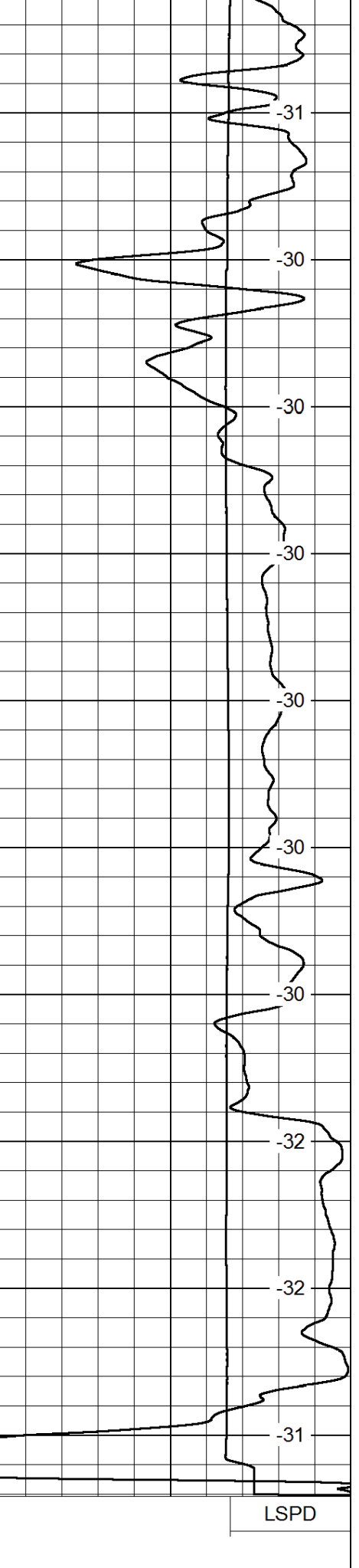
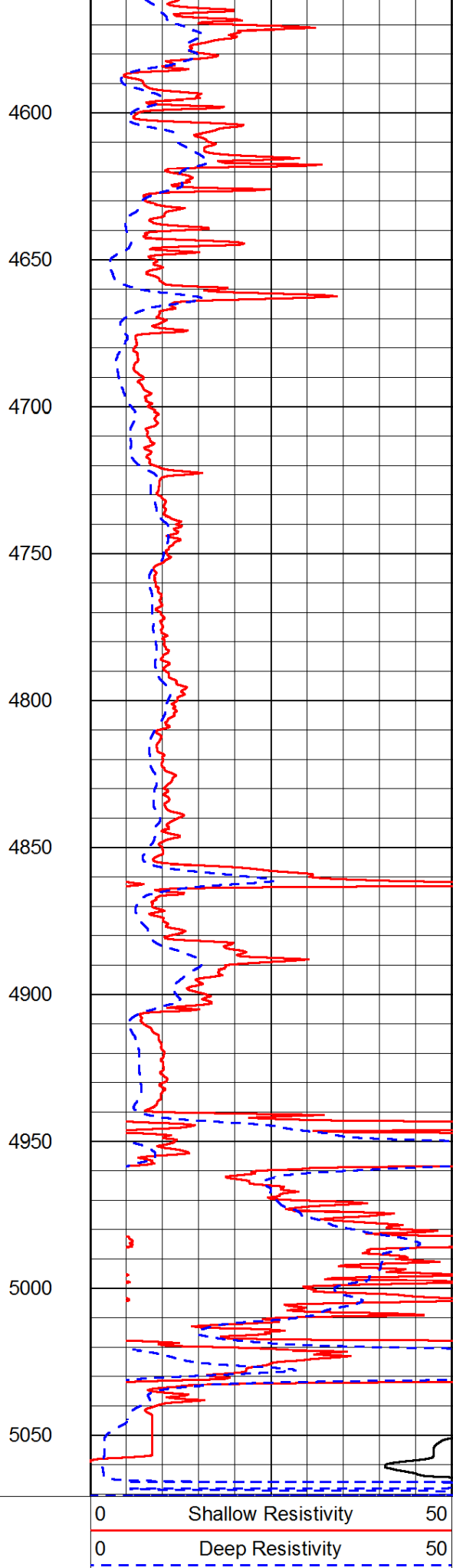
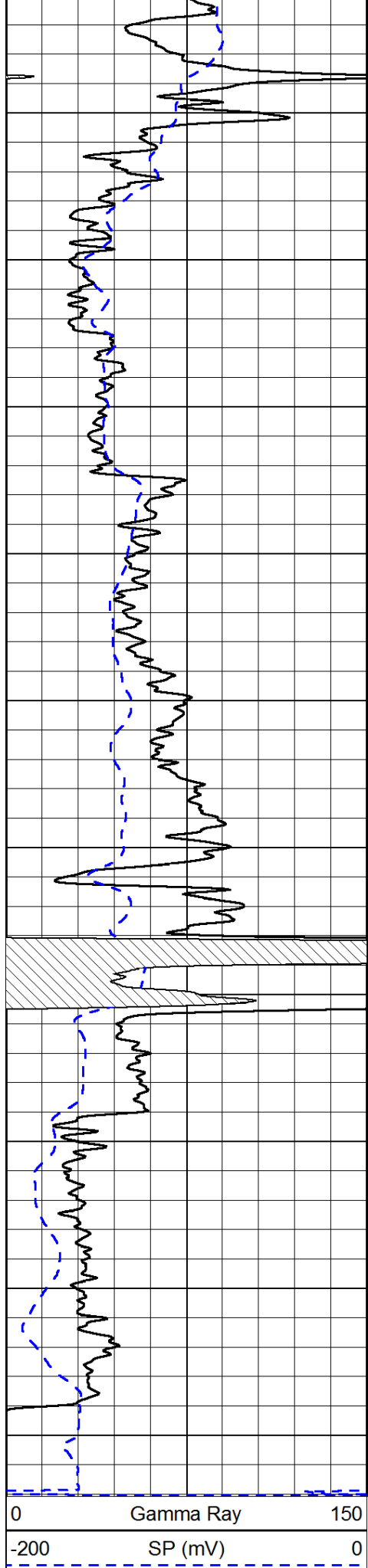












1000
15000

Conductivity 0
Line Tension

0

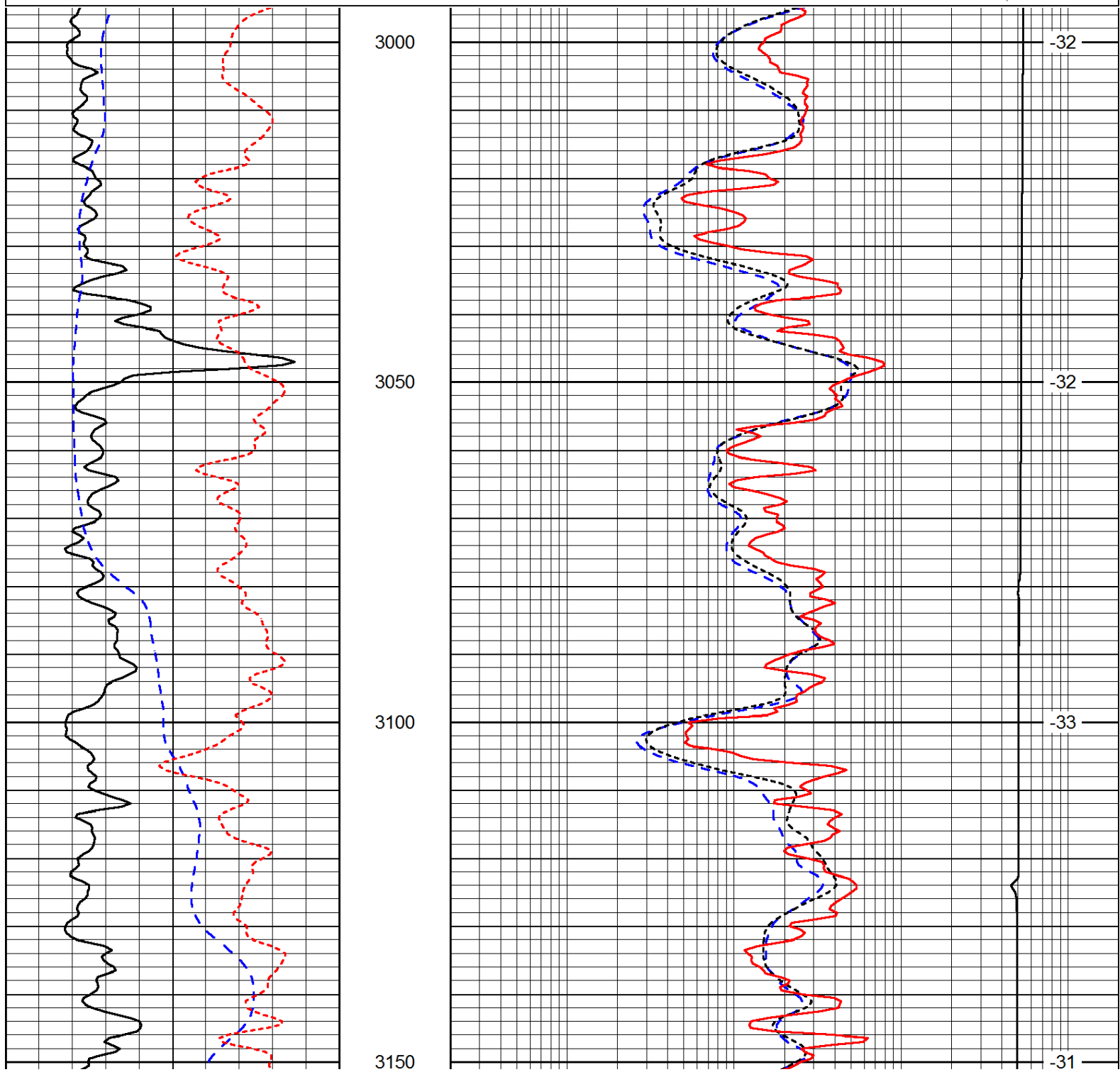
15000	Line Tension	0
50	Shallow Resistivity	500
50	Deep Resistivity	500

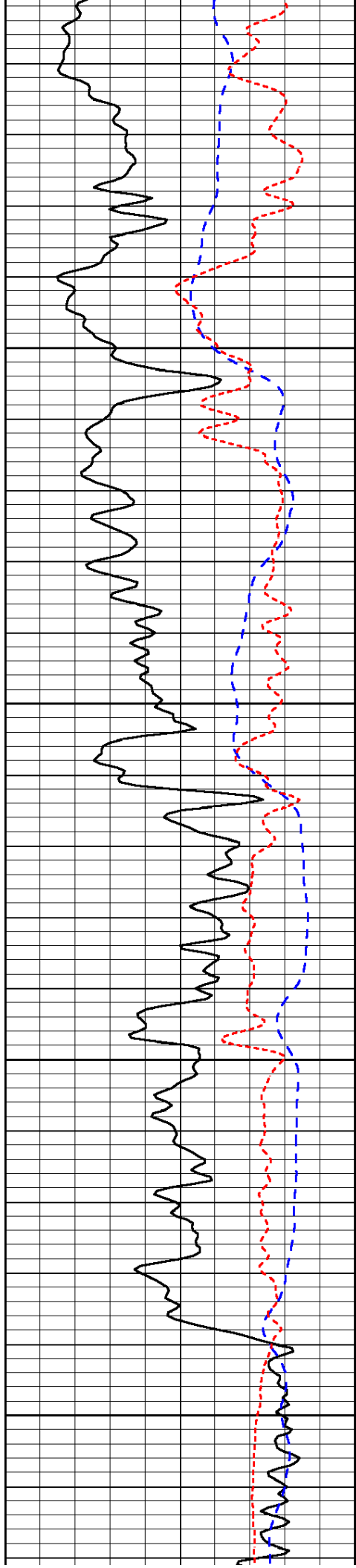
Database File: c:\warrior\data\n-10_medicine river ranch 'e' #2\n10_medicineriver_e_2hd.db
 Dataset Pathname: DIL/n10stk
 Presentation Format: dil
 Dataset Creation: Fri Aug 23 16:50:46 2013
 Charted by: Depth in Feet scaled 1:240

0	Gamma Ray	150
-200	SP (mV)	0
-160	RxoRt	40

0.2	Deep Resistivity	2000
0.2	Medium Resistivity	2000
0.2	Shallow Resistivity	2000
15000	Line Tension	0

LSPD



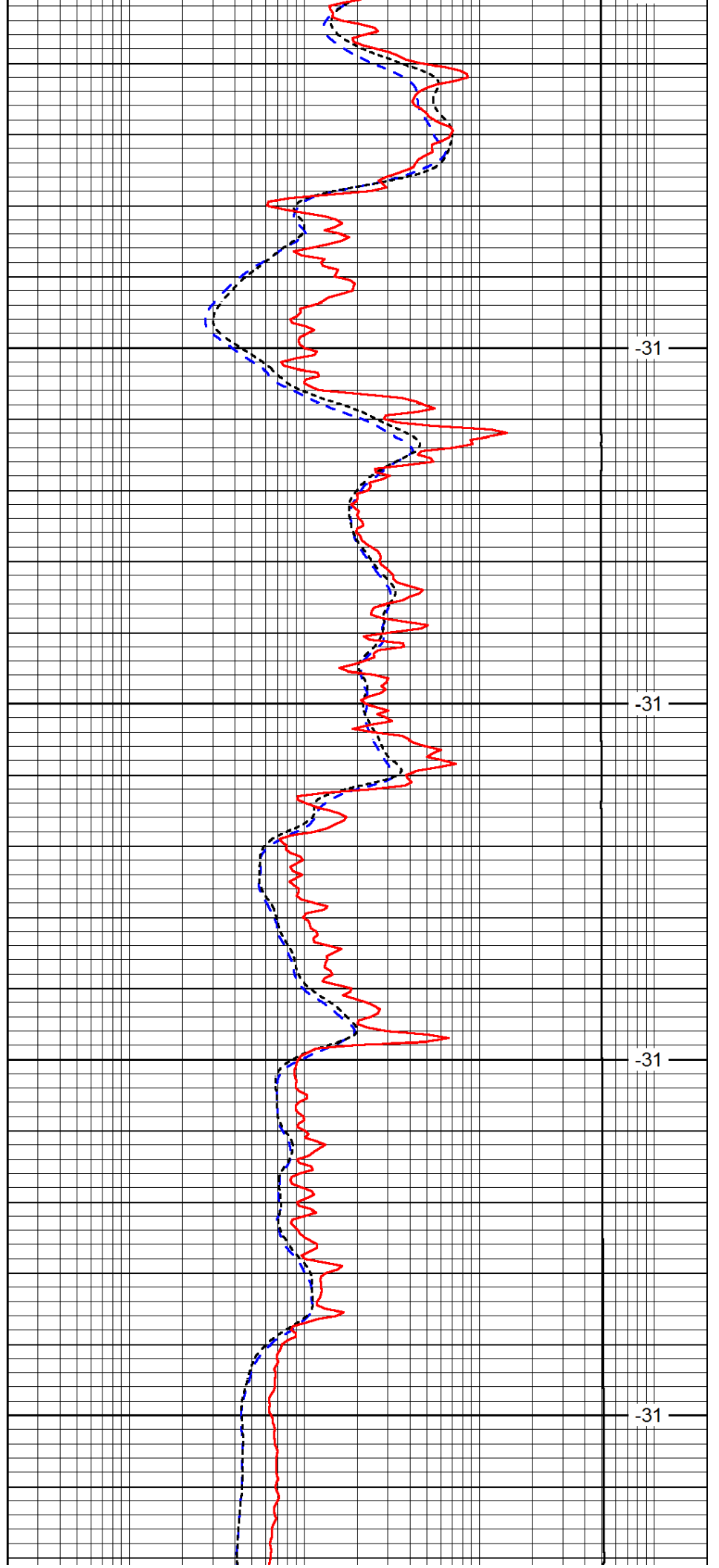


3200

3250

3300

3350

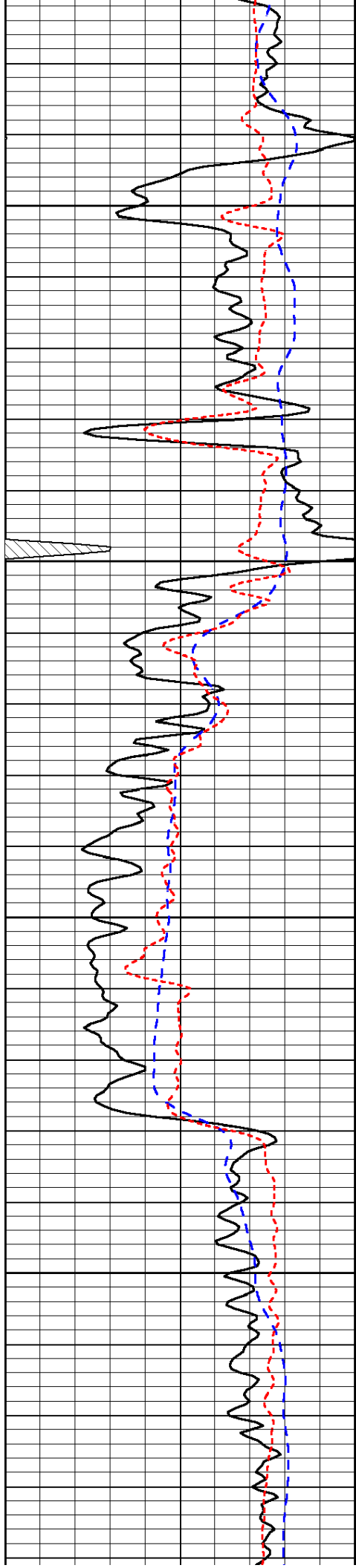


-31

-31

-31

-31

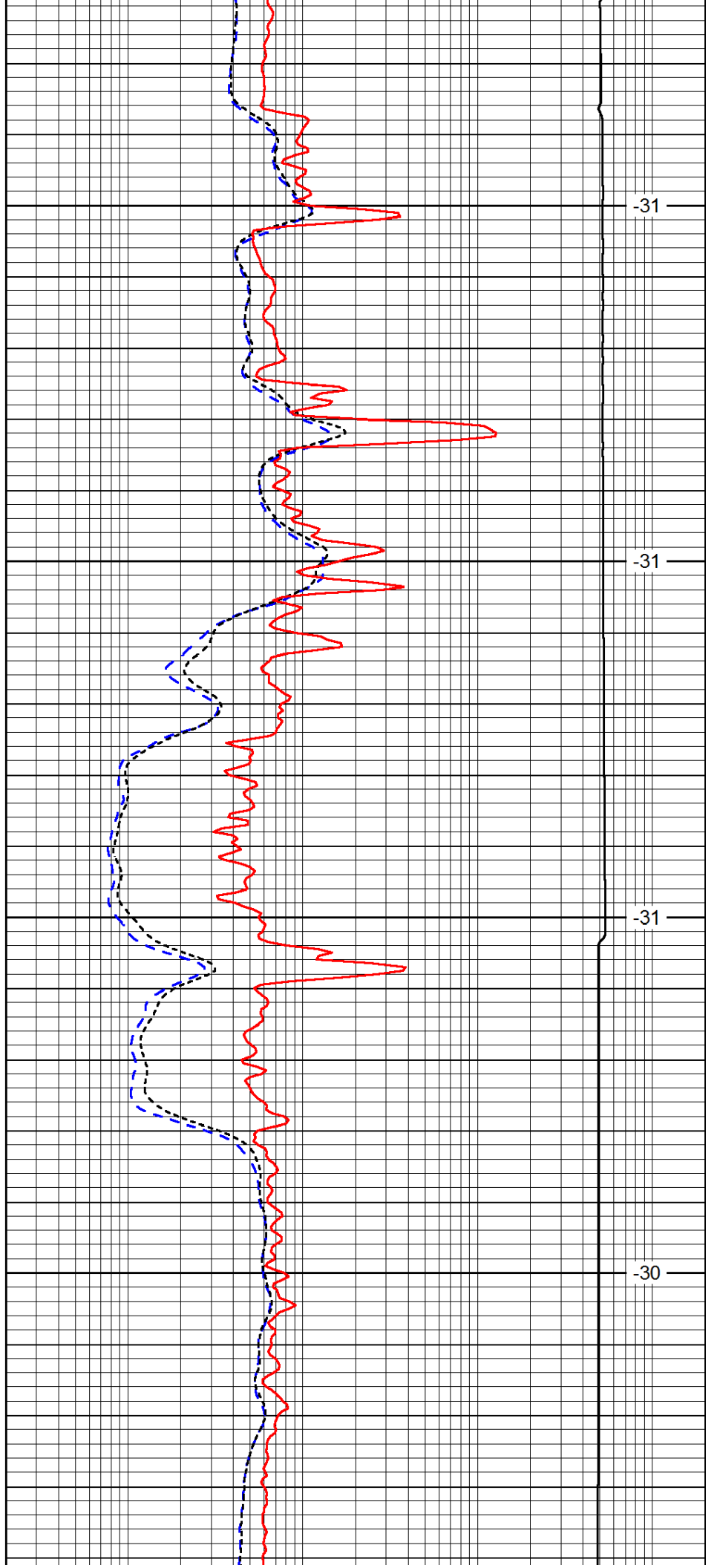


3400

3450

3500

3550

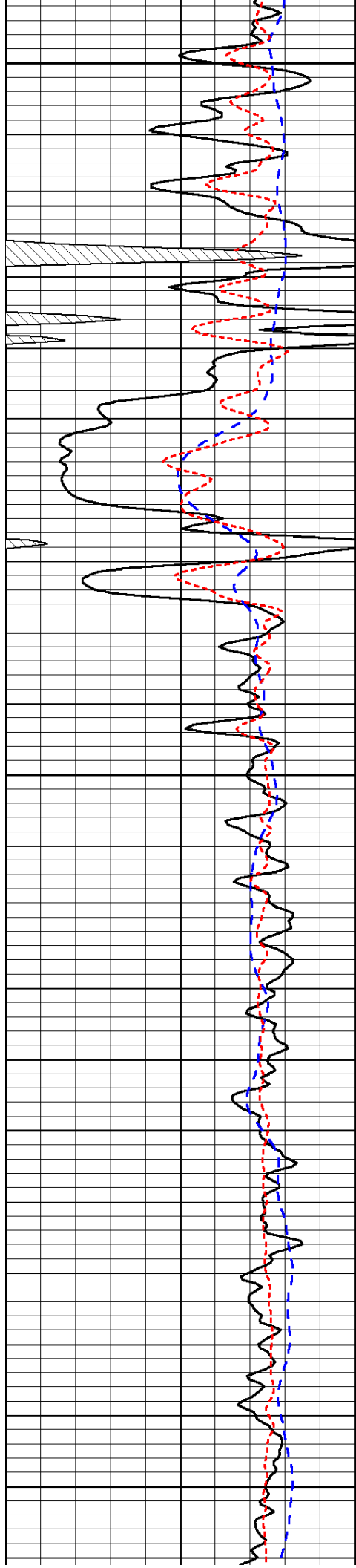


-31

-31

-31

-30



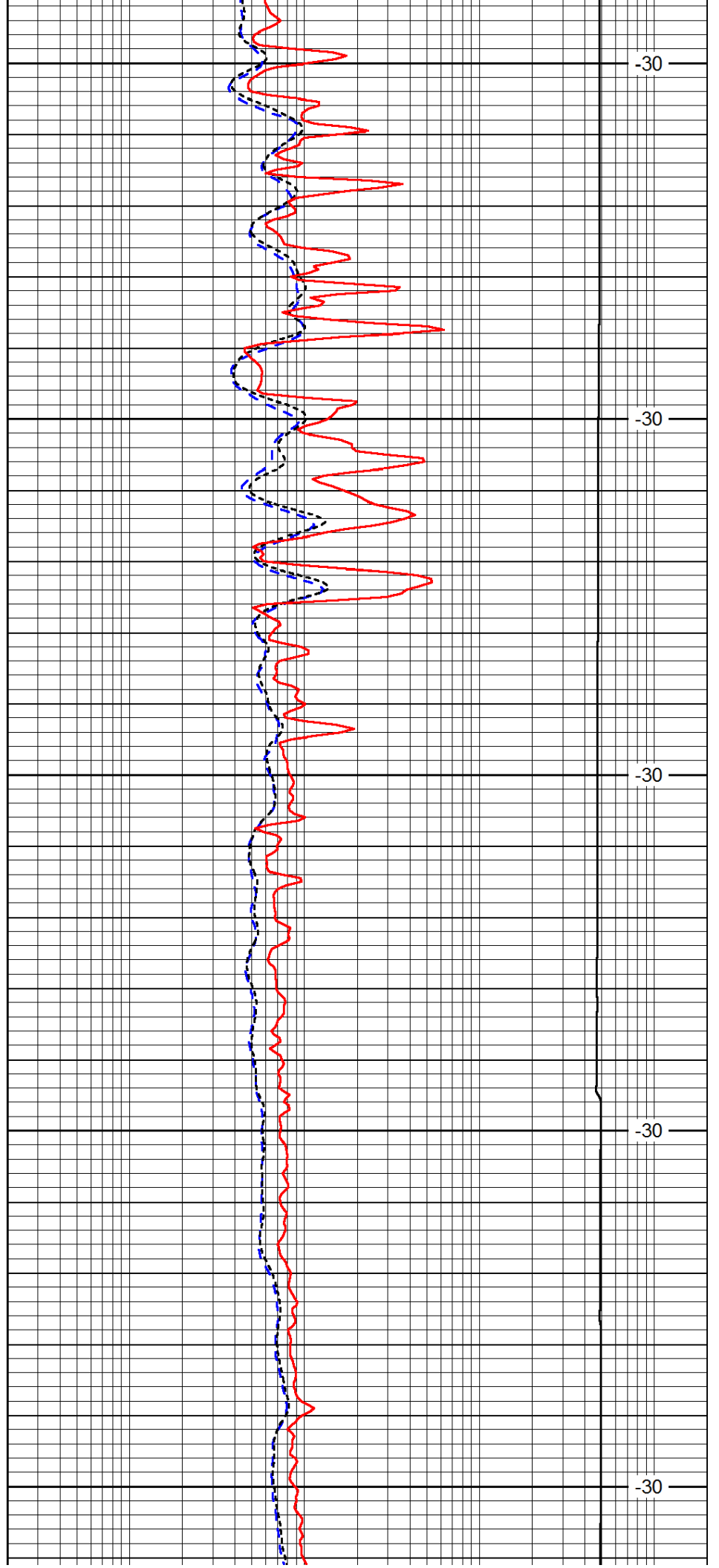
3600

3650

3700

3750

3800



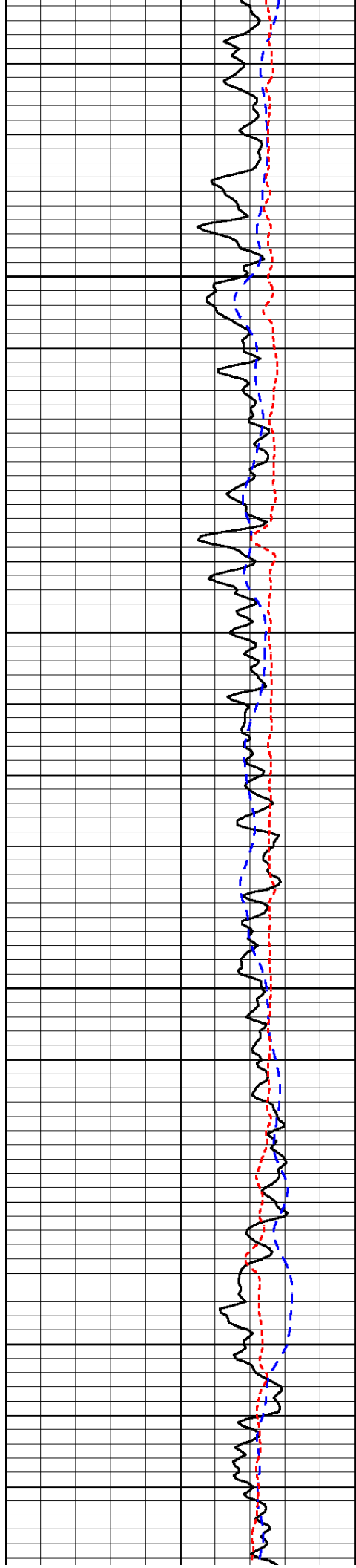
-30

-30

-30

-30

-30

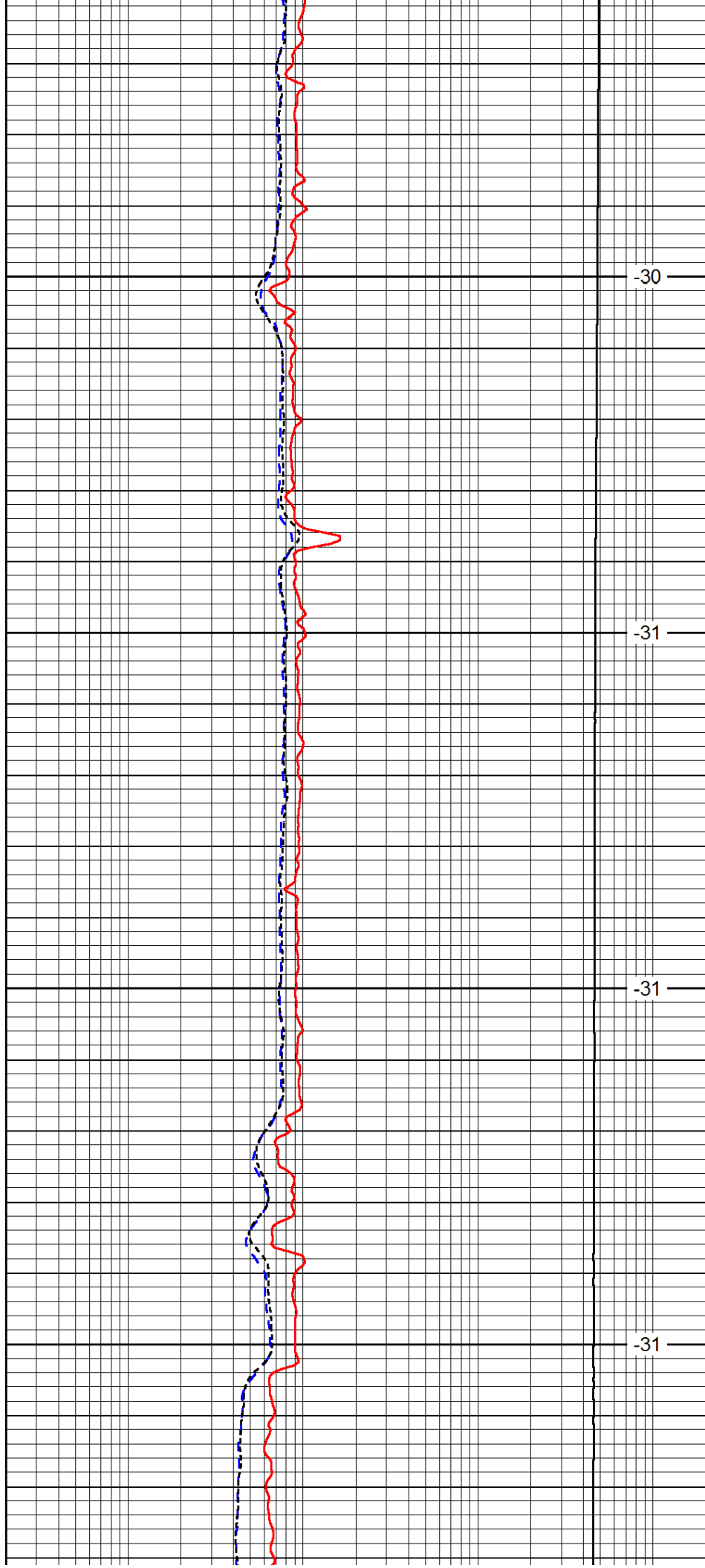


3850

3900

3950

4000

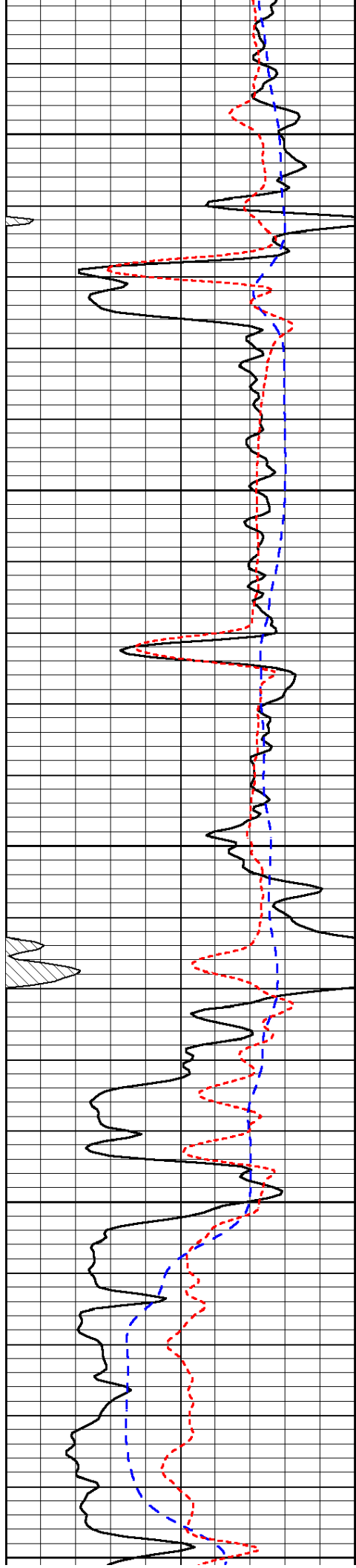


-30

-31

-31

-31



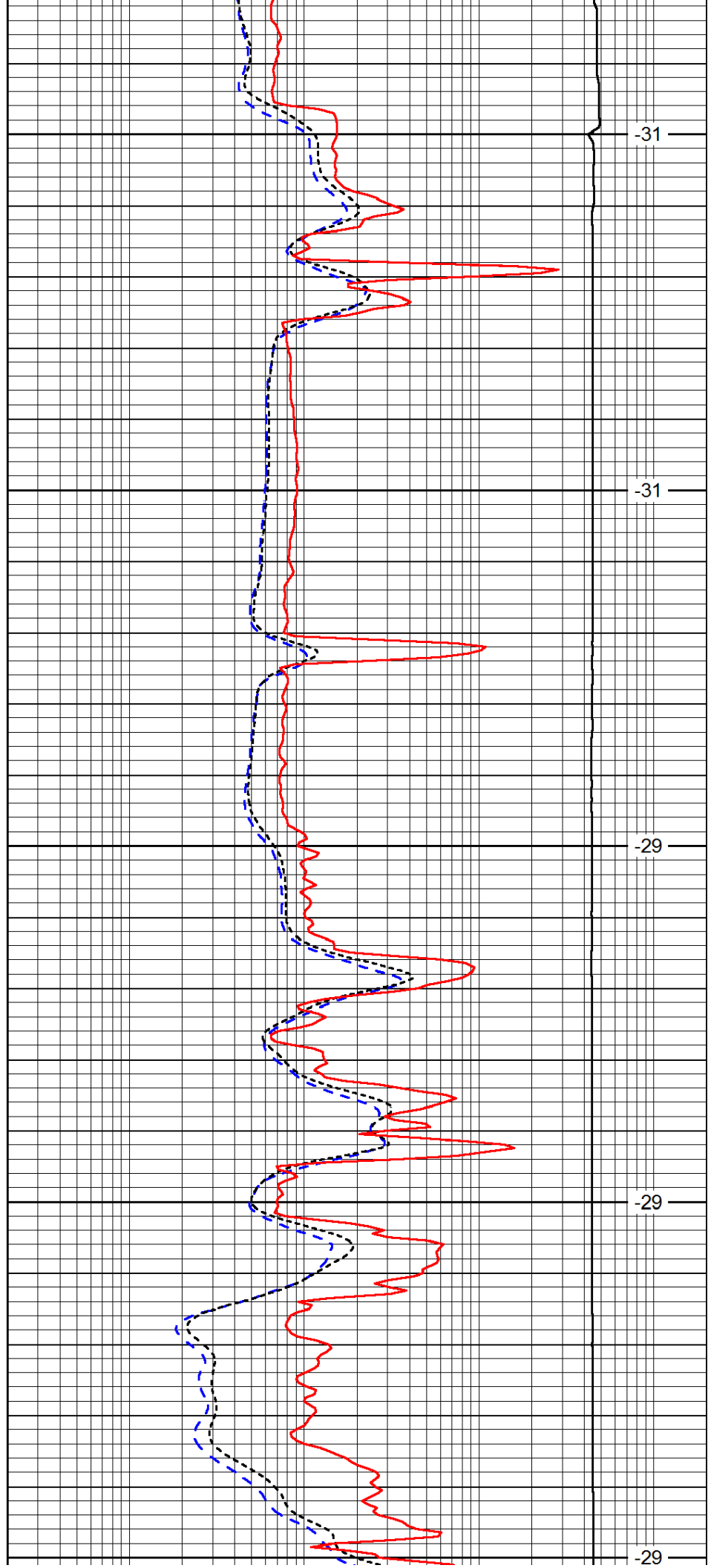
4050

4100

4150

4200

4250



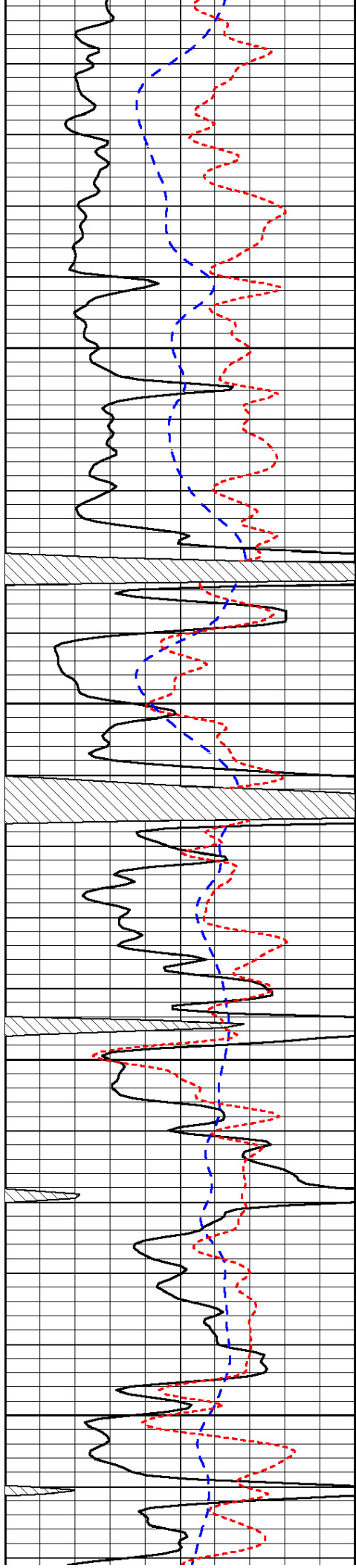
-31

-31

-29

-29

-29

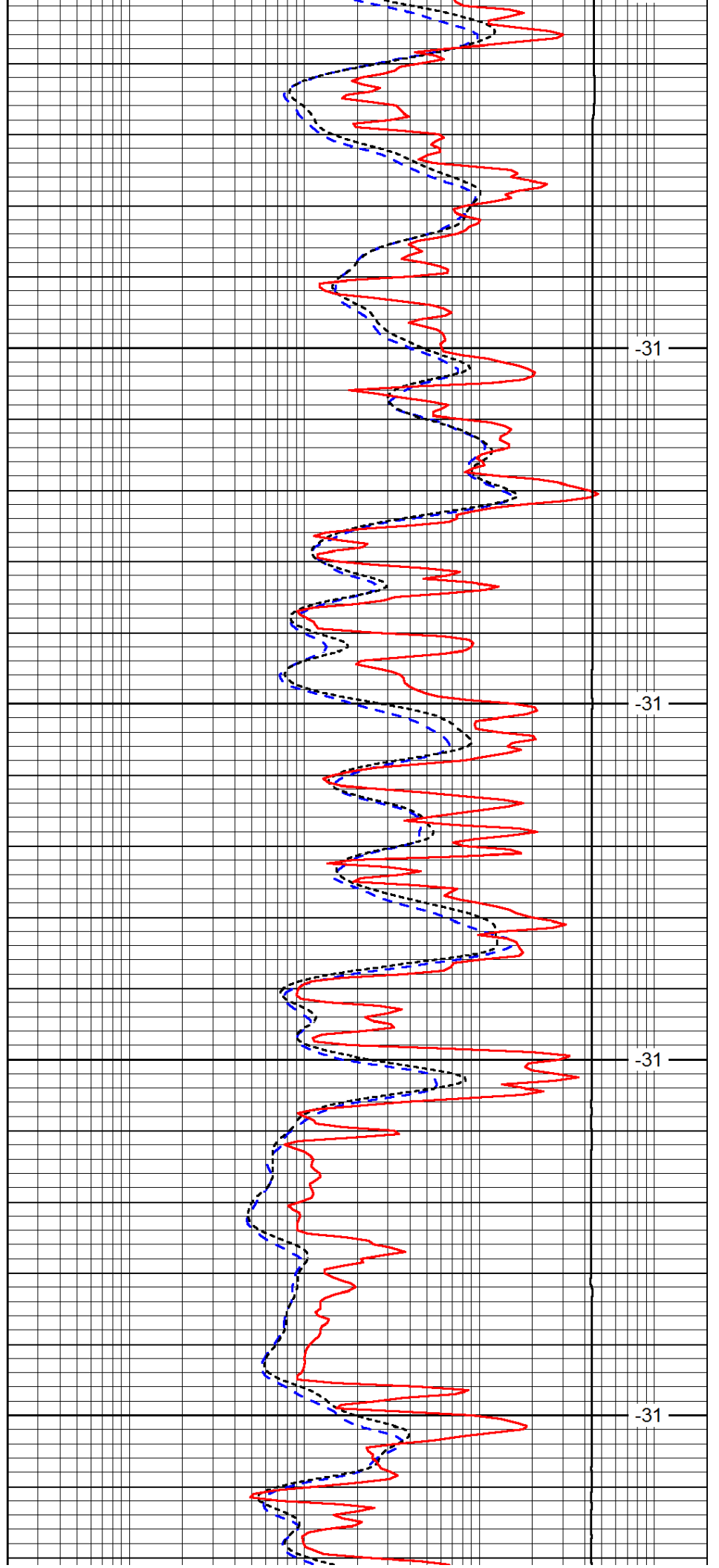


4300

4350

4400

4450

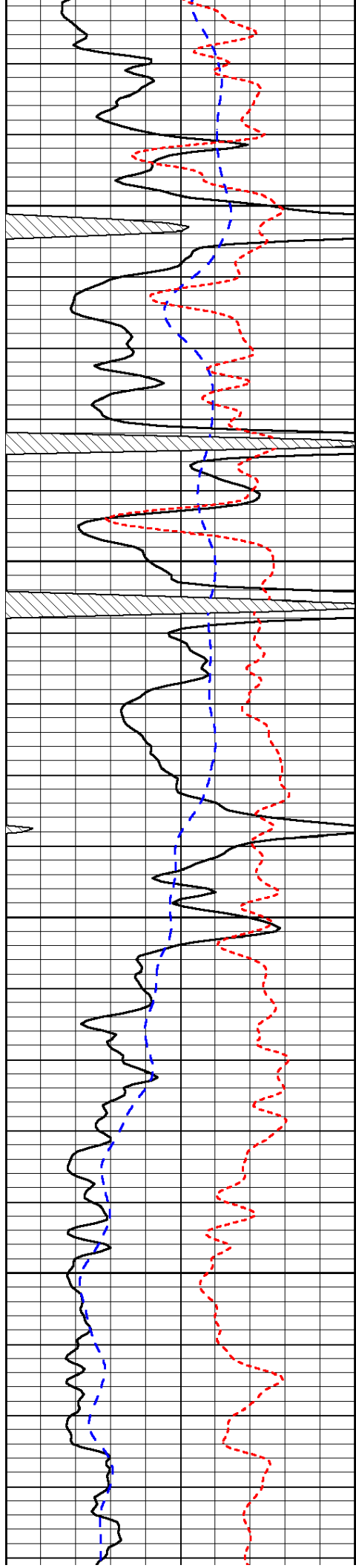


-31

-31

-31

-31

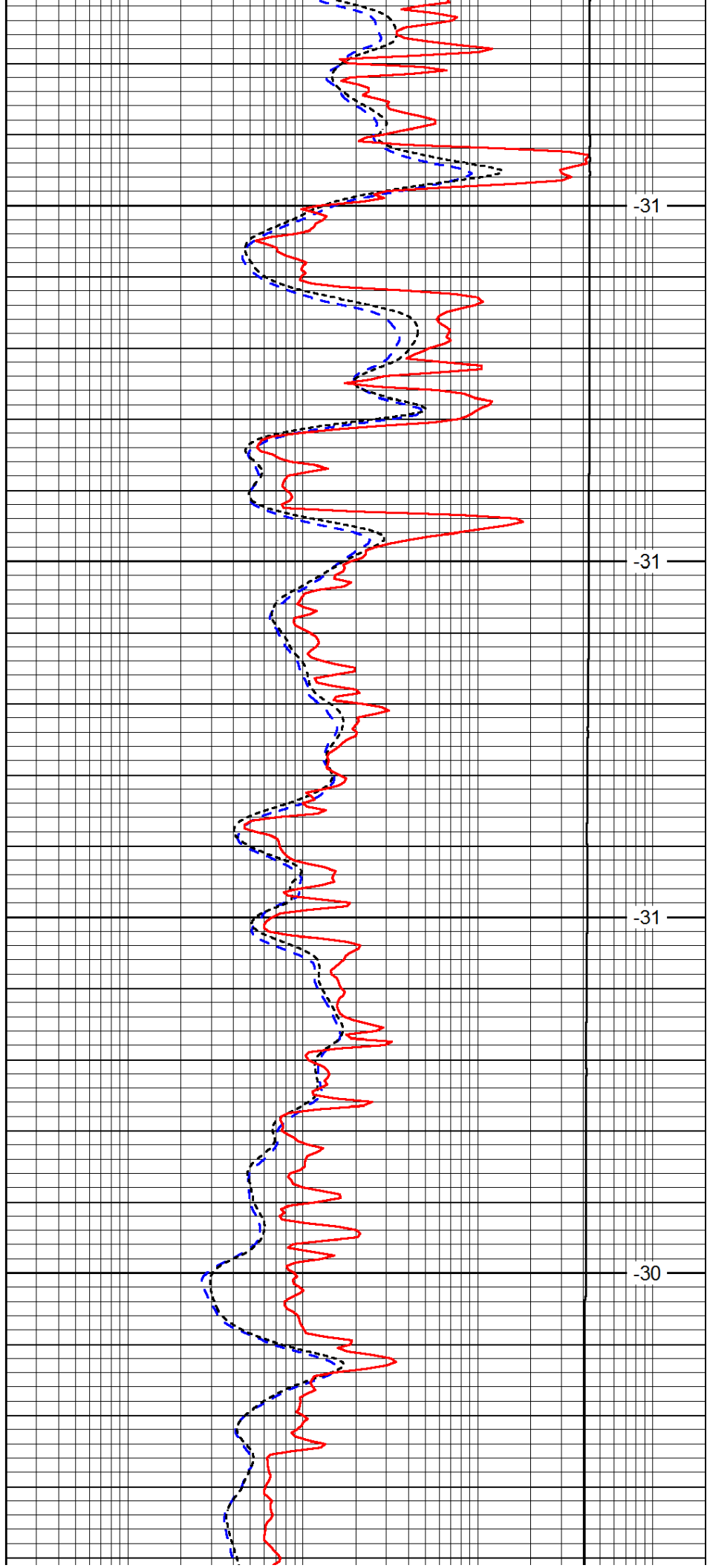


4500

4550

4600

4650

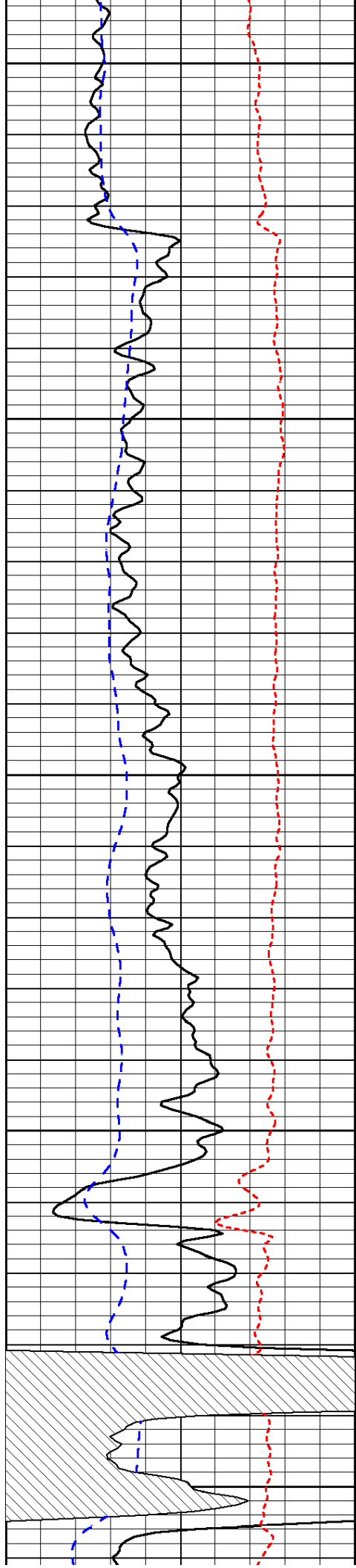


-31

-31

-31

-30



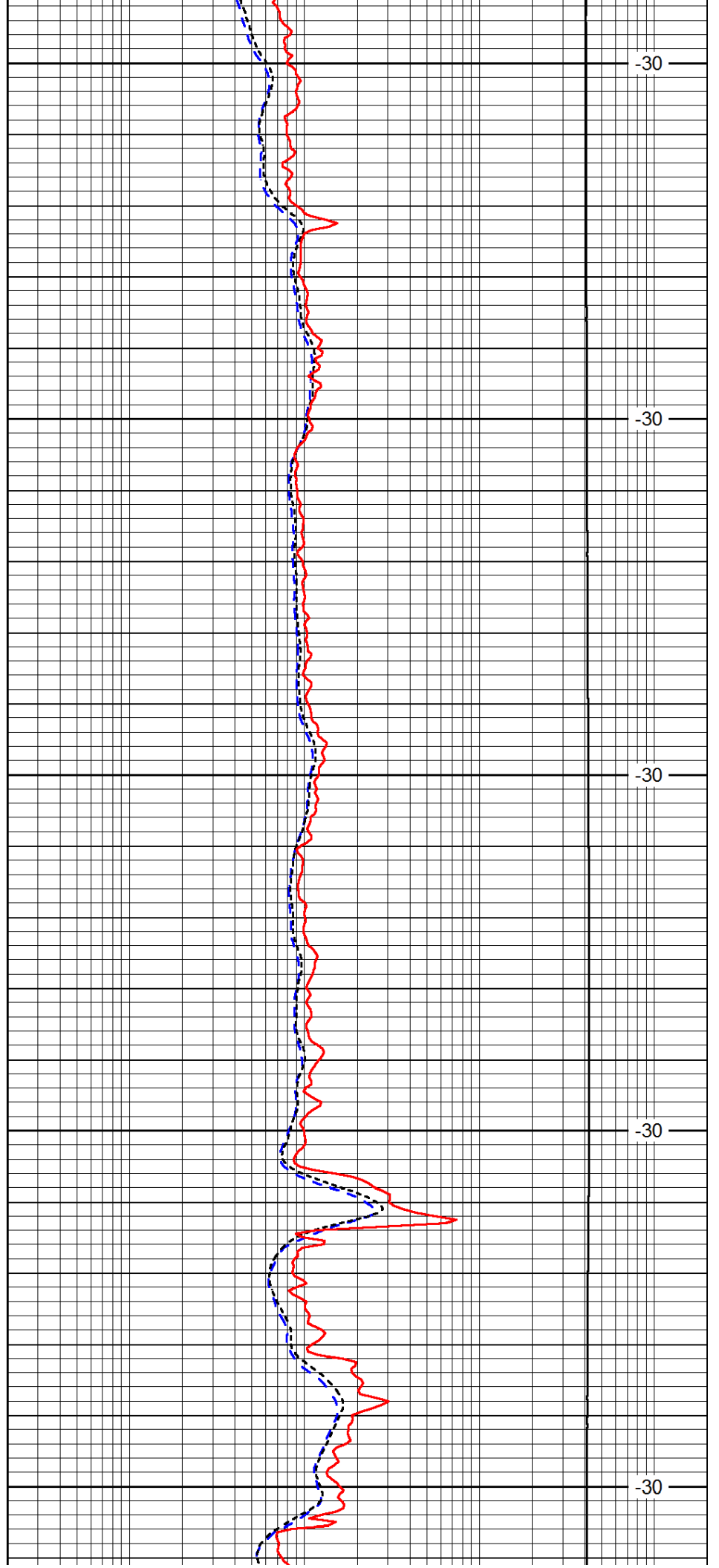
4700

4750

4800

4850

4900



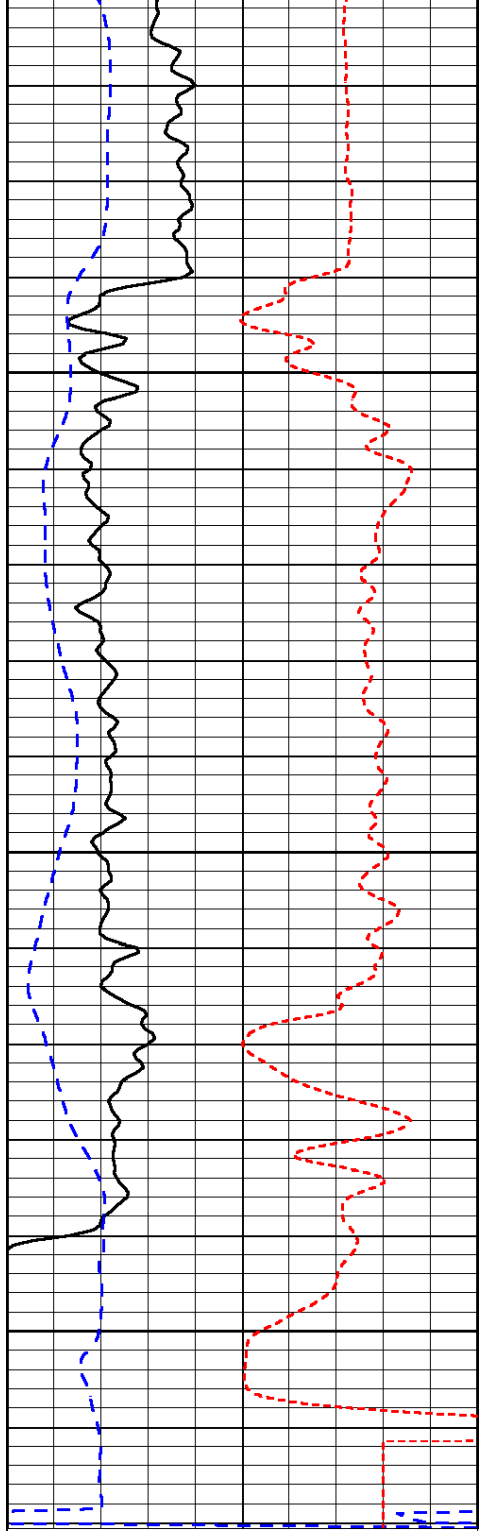
-30

-30

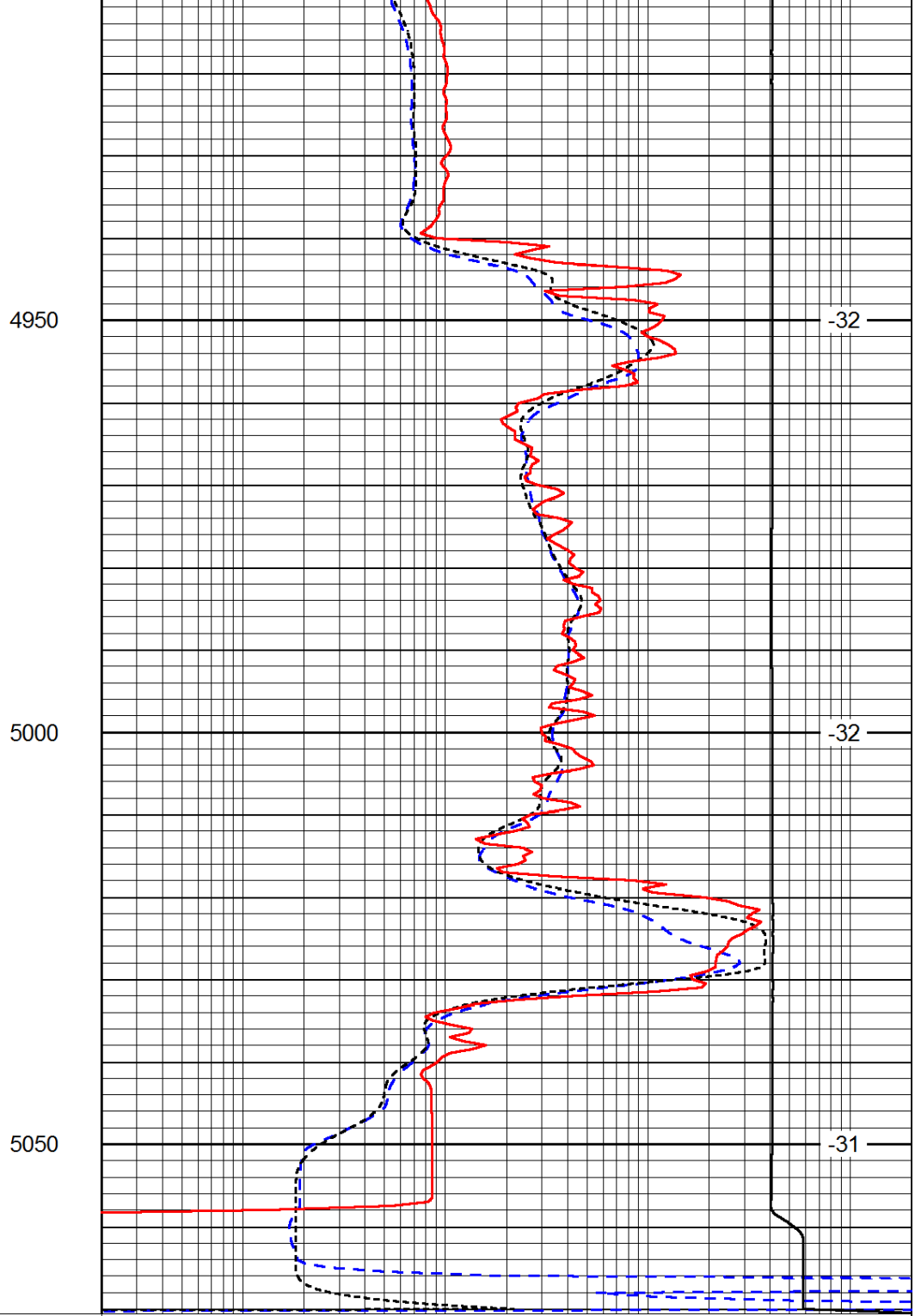
-30

-30

-30



0	Gamma Ray	150
-200	SP (mV)	0
-160	RxoRt	40



0.2	Deep Resistivity	2000
0.2	Medium Resistivity	2000
0.2	Shallow Resistivity	2000
15000	Line Tension	0

LSPD