

MIDWEST SURVEYS
 LOGGING - PERFORATING - CONSULTING SERVICES
 P.O. Box 68, Osawatomie, KS 66064
 913.755.2128

GAMMA RAY / NEUTRON / CCL

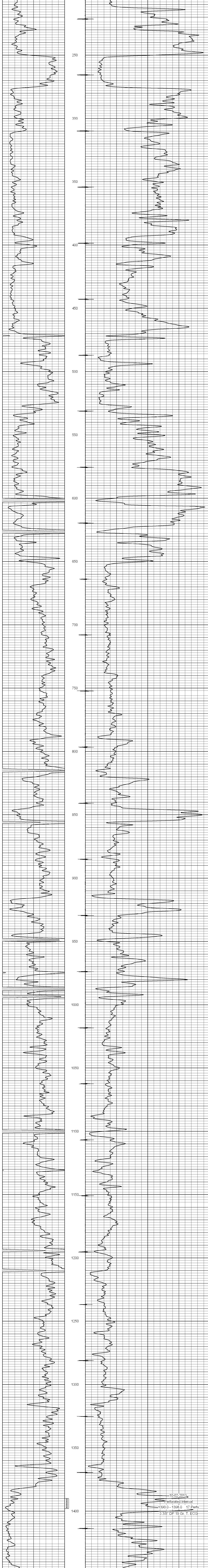
File No:	Company: Laymon Oil II LLC		
	Well: Keske No. 29-13		
	Field: Vernon		
	County: Woodson		
	State: Kansas		
	Location: 5085 FSL & 3685 FEL		
	Other Services: Perforate		
	Sec. 34 Type: 23s Rge: 16e Elev: NA		
	Permament Datum: GL		
	Log Measured From: GL		
	Drilling Measured From: GL		
Date:	10-02-2013		
Run Number:	One		
Depth Logger:	1480.0		
Bottom Logged Interval:	1455.6		
Top Log Interval:	200.0		
Fluid Level:	Full		
Type Fluid:	Water		
Density / Viscosity:	NA		
Salinity / PPML Cl:	NA		
Max Recorded Temp:	NA		
Estimated Cement Top:	0.0		
Equipment No:	107 Osawatome		
Location:	Steve Winkfish		
Witnessed By:	Mike Laymon		
RUN No.	BORE-HOLE RECORD		
BIT	FROM	TO	SIZE
One	12.0"	0.0	8.625"
Two	6.75"	40.0	4.50"
			28.0#
			10.5#
			0.0
			1457.0

<<< Fold Here >>>
 All interpretations are opinions based on inferences from electrical or other measurements and we cannot and do not guarantee the accuracy or correctness of any interpretation, and we shall not, except in the case of gross or willful negligence on our part, be liable or responsible for any loss, costs, damages, or expenses incurred or sustained by anyone resulting from any interpretation made by any of our officers, agents or employees. These interpretations are also subject to our general terms and conditions set out in our current Price Schedule.

Comments

Drilling Contractor :
Laymon Oil II LLC

Database File: keske29.db
 Dataset Pathname: pass1
 Presentation Format: gr-n-ccl
 Dataset Creation: Wed Oct 02 11:47:28 2013 by Log SCH 111116
 Charted by: Depth in Feet scaled 1:240



10-02-2013
 Perforated Interval
 1390.0 - 1398.0 17 Perfs
 3 3/8" DP 19 Gr. T. ECC