



**COMPLETION
& PRODUCTION
SERVICES CO.**

**COMPENSATED
DENSITY / NEUTRON
LOG**

Company GORE OIL COMPANY
Well CARMICHAEL #1
Field WILDCAT
County ROOKS State KANSAS

Company GORE OIL COMPANY
Well CARMICHAEL #1
Field WILDCAT
County ROOKS
State KANSAS

Location: API #: 15-163-24107-00-00
2200' FNL & 3200' FEL
NW - SE - NW
SEC 22 TWP 9S RGE 18W
Permanent Datum GROUND LEVEL Elevation 2165
Log Measured From KELLY BUSHING 8' A.G.L.
Drilling Measured From KELLY BUSHING
Other Services
DIL/MEL
Elevation
K.B. 2173
D.F. 2171
G.L. 2165

Date	5/3/13		
Run Number	ONE		
Depth Driller	3670		
Depth Logger	3666		
Bottom Logged Interval	3642		
Top Log Interval	3000		
Casing Driller	258		
Casing Logger	258		
Bit Size	7.875		
Type Fluid in Hole	CHEMICAL MUD	CHLORIDES 3.000	
Density / Viscosity	9.10 / 53		
pH / Fluid Loss	10.5 / 7.4		
Source of Sample	FLOWLINE		
Rim @ Meas. Temp	.75 @ 74F		
Rmf @ Meas. Temp	.56 @ 74F		
Rmc @ Meas. Temp	.90 @ 74F		
Source of Rmf / Rmc	MEASURED		
Rim @ BHT	.49 @ 113F		
Time Circulation Stopped	2 HOURS		
Time Logger on Bottom			
Maximum Recorded Temperature	113F		
Equipment Number	860		
Location	HAYS, KS.		
Recorded By	IAN MABB		
Witnessed By	MARC DOWNING		

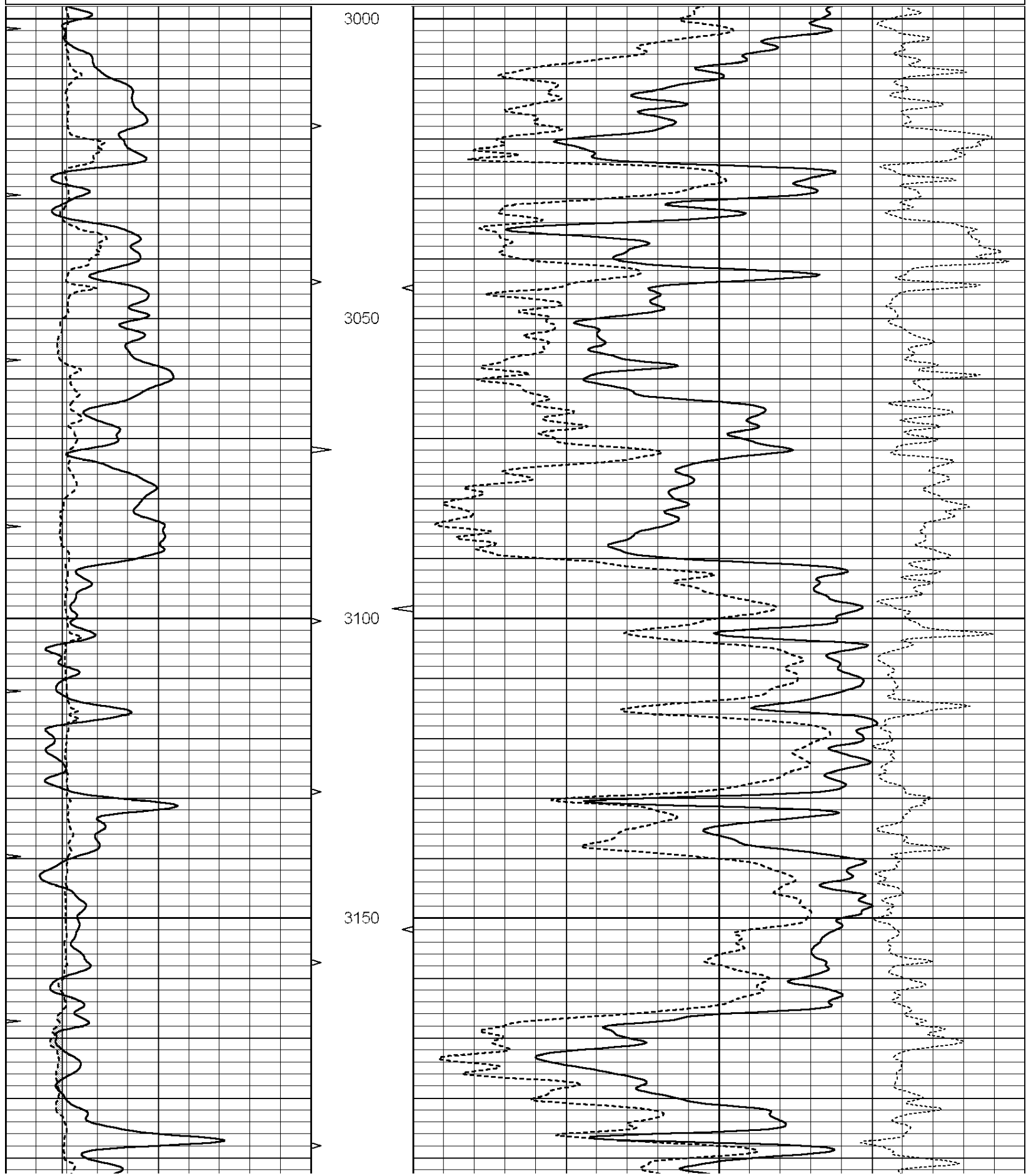
<<< Fold Here >>>

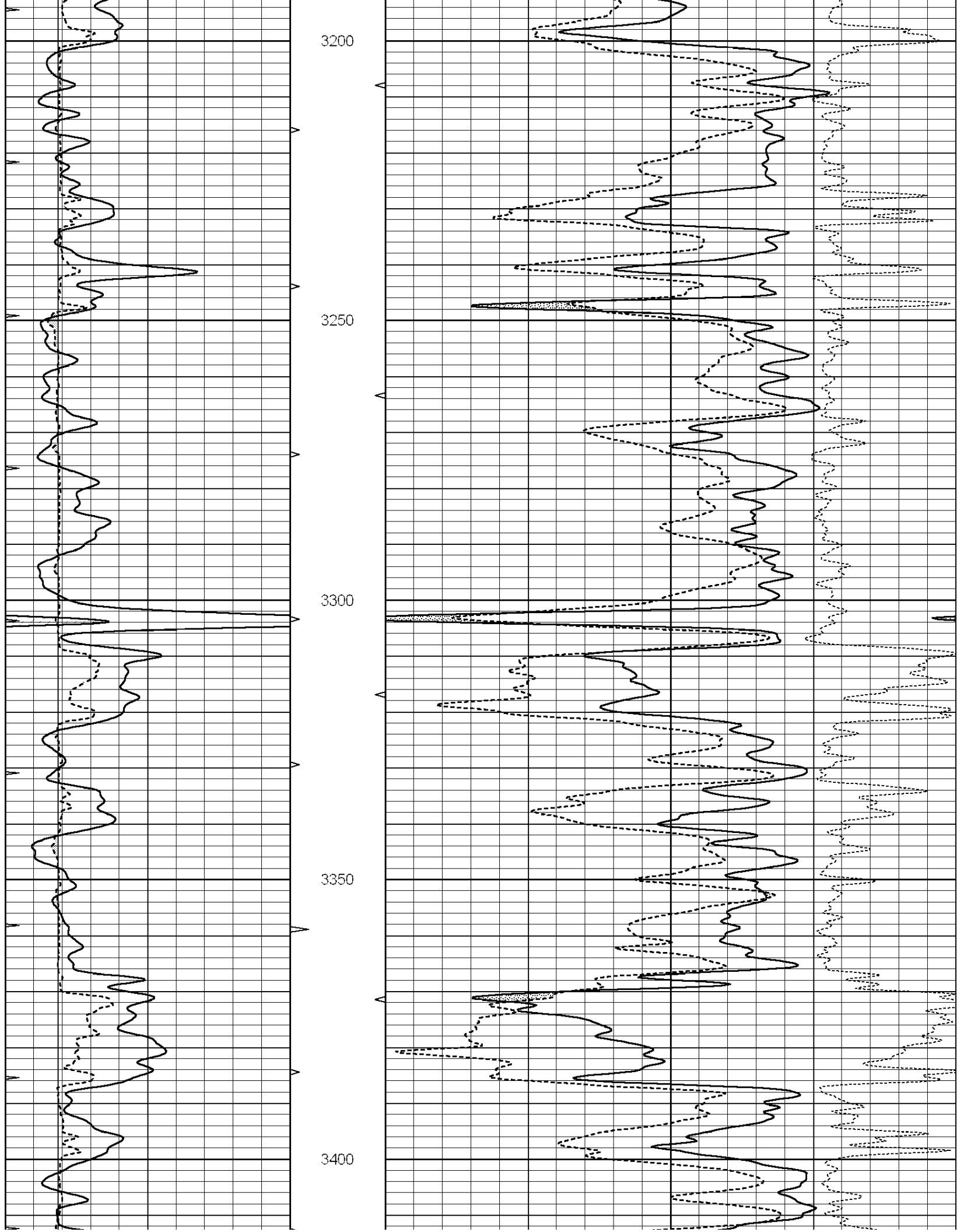
All interpretations are opinions based on inferences from electrical or other measurements and we cannot and do not guarantee the accuracy or correctness of any interpretation, and we shall not, except in the case of gross or willful negligence on our part, be liable or responsible for any loss, costs, damages, or expenses incurred or sustained by anyone resulting from any interpretation made by any of our officers, agents or employees. These interpretations are also subject to our general terms and conditions set out in our current Price Schedule.

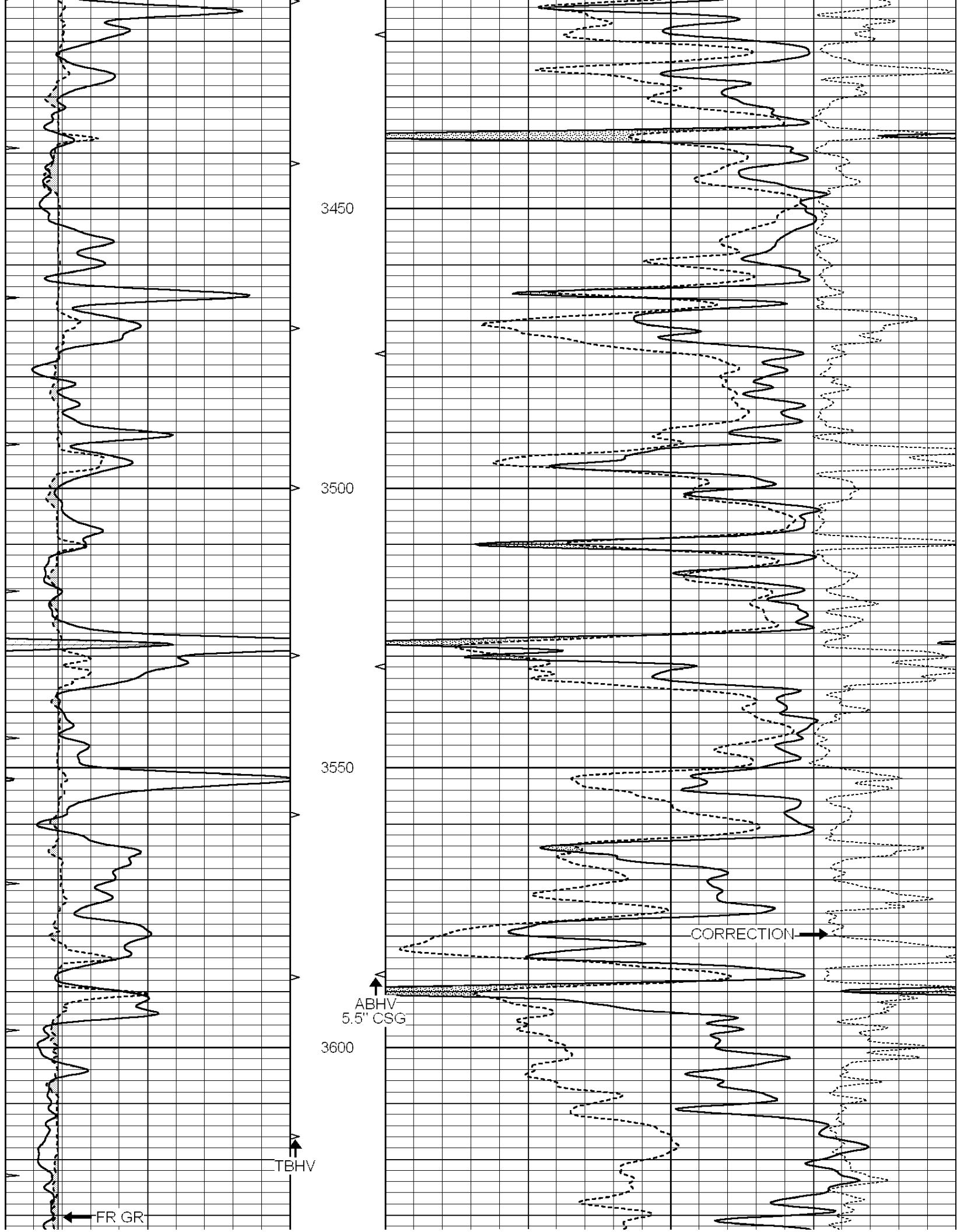
Comments

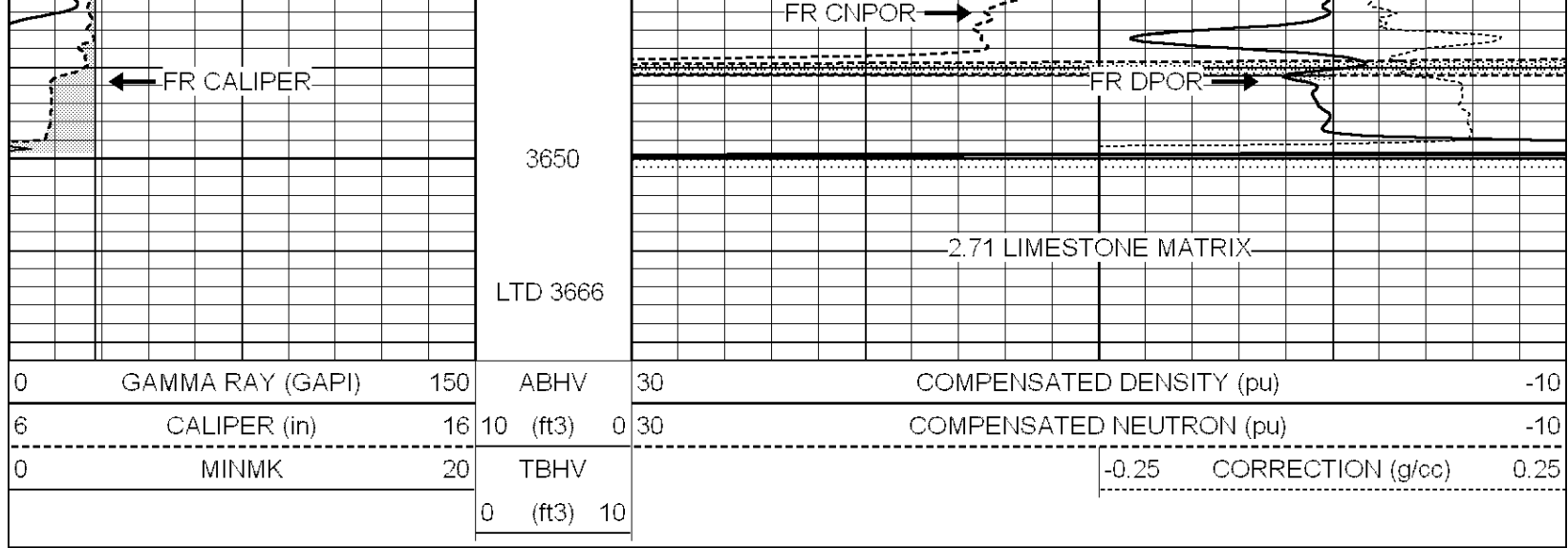
NABORS COMPLETION & PRODUCTION SERVICES
785-628-6395
THANK YOU FOR YOUR BUSINESS
DIRECTIONS: PLAINVILLE, KS. - 1 NORTH TO RD. W - 2 MILES WEST - 1/2 MILE NORTH - EAST INTO

0	GAMMA RAY (GAPI)	150	ABHV	30	COMPENSATED DENSITY (pu)	-10
6	CALIPER (in)	16	10 (ft3)	0 30	COMPENSATED NEUTRON (pu)	-10
0	MINMK	20	TBHV		-0.25 CORRECTION (g/cc)	0.25
			0 (ft3)	10		





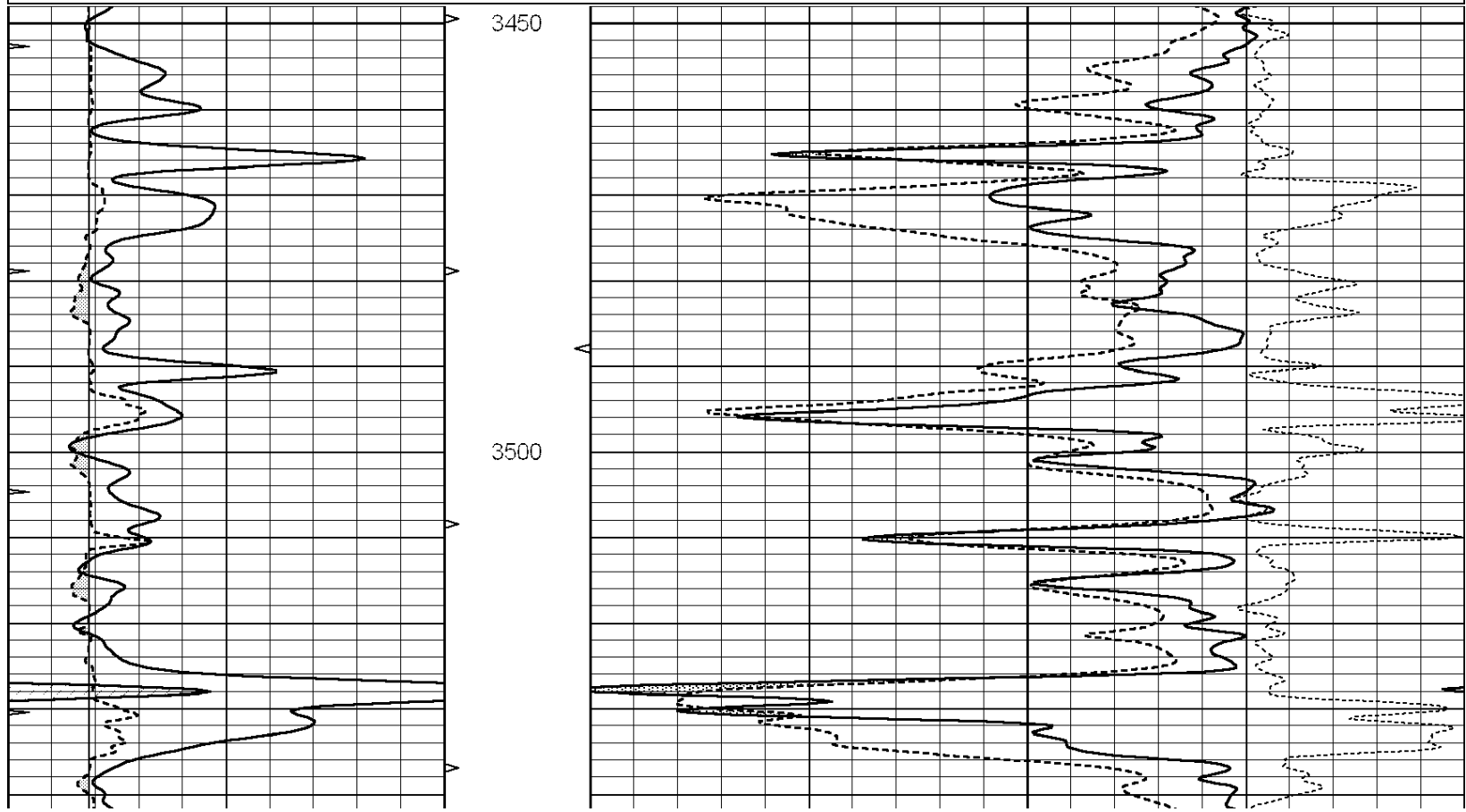


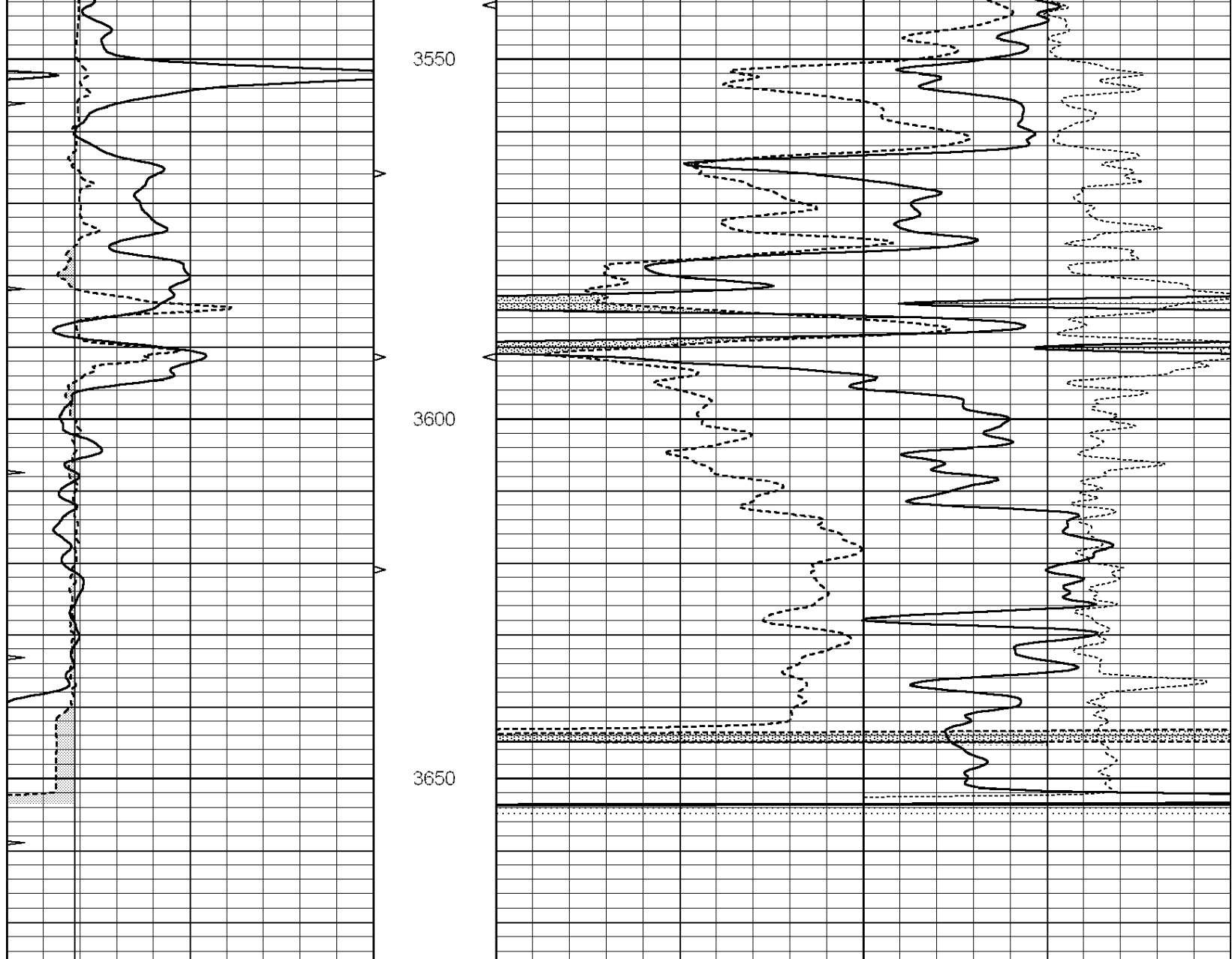


REPEAT SECTION

Database File: 010995ddn.db
 Dataset Pathname: pass2.2
 Presentation Format: _den_neu
 Dataset Creation: Fri May 03 17:37:08 2013 by Calc Open-Cased 090629
 Charted by: Depth in Feet scaled 1:240

0	GAMMA RAY (GAPI)	150	ABHV	30	COMPENSATED DENSITY (pu)	-10
6	CALIPER (in)	16	10 (ft3)	0 30	COMPENSATED NEUTRON (pu)	-10
0	MINMK	20	TBHV		-0.25 CORRECTION (g/cc)	0.25
			0 (ft3)	10		





0	GAMMA RAY (GAPI)	150	ABHV	30	COMPENSATED DENSITY (pu)	-10
6	CALIPER (in)	16	10 (ft3)	0 30	COMPENSATED NEUTRON (pu)	-10
0	MINMK	20	TBHV		-0.25 CORRECTION (g/cc)	0.25
			0 (ft3)	10		

Calibration Report

Database File: 010995ddn.db
 Dataset Pathname: pass3.1
 Dataset Creation: Fri May 03 18:02:42 2013 by Calc Open-Cased 090629

Dual Induction Calibration Report

Serial-Model: PROBE7-DILG
 Surface Cal Performed: Thu Apr 25 07:54:19 2013
 Downhole Cal Performed: Sat Jan 19 19:51:38 2013
 After Survey Verification Performed: Sat Jan 19 19:51:38 2013

Surface Calibration

Loop:	Readings		V	References		mmho/m	Results	
	Air	Loop		Air	Loop		m	b
Deep	0.793	0.790	V	0.000	400.000	mmho/m	620.000	4.000
Medium	0.000	1.000	V	0.000	10.000	mmho/m	0.000	10.000

Internal:	Zero	Cal		Zero	Cal		m	b
Deep	0.041	0.642	V	0.000	400.000	mmho/m	664.874	-27.011
Medium	0.035	0.802	V	0.000	464.000	mmho/m	604.936	-21.367

Downhole Calibration								
	Readings			References			Results	
	Zero	Cal		Zero	Cal		m'	b'
Deep	135384.000	27094.500	mmho/m	135400.000	27082.400	mmho/m	1.000	-19.259
Medium	-47330.100	-9381.740	mmho/m	-47327.100	-9389.280	mmho/m	1.000	-10.154
LL3		7.322	V		1400.000	Ohm-m		
		0.038	V		20.000	Ohm-m		
		-7.273	V		4000.000	mmho-m		

After Survey Verification								
	Readings			Targets			Results	
	Zero	Cal		Zero	Cal		m'	b'
Deep	0.000	0.000	mmho/m	135384.000	27094.500	mmho/m	1.000	0.000
Medium	0.000	0.000	mmho/m	-47330.100	-9381.740	mmho/m	1.000	0.000
LL3		0.000	Ohm-m		1400.000	Ohm-m		
		0.000	Ohm-m		20.000	Ohm-m		
		0.000	mmho-m		4000.000	mmho-m		

Compensated Density Calibration Report

Serial-Model:	GEAR1-GEARHART
Source / Verifier:	147 / 147
Master Calibration Performed:	Thu Apr 25 08:46:02 2013

Master Calibration						
	Density		Far Detector	Near Detector		
Magnesium	1.710	g/cc	1205.77	610.74	cps	
Aluminum	2.600	g/cc	271.21	419.72	cps	
Spine Angle = 75.89			Density/Spine Ratio = 0.579			
	Size		Reading			
Small Ring	7.60	in	4.69	V		
Large Ring	14.00	in	6.52	V		

Compensated Neutron Calibration Report

Serial Number:	NEU_4I
Tool Model:	G

CALIBRATION						
Detector	Readings		Target		Normalization	
Short Space	1.00	cps	1.00	cps	1.0000	
Long Space	1.00	cps	1.00	cps	1.0000	

Gamma Ray Calibration Report

Serial Number:	GR5
Tool Model:	OPEN
Performed:	Fri Apr 26 22:00:59 2013
Calibrator Value:	1.0 GAPI
Background Reading:	0.0 cps

Calibrator Reading:

1.0

cps

Sensitivity:

2.0000

GAPI/cps