



**COMPLETION
& PRODUCTION
SERVICES CO.**

**DUAL
INDUCTION
LOG**

Company GORE OIL COMPANY
Well CARMICHAEL #1
Field WILDCAT
County ROOKS State KANSAS

Company GORE OIL COMPANY
Well CARMICHAEL #1
Field WILDCAT
County ROOKS
State KANSAS

Location: API #: 15-163-24107-00-00
2200' FNL & 3200' FEL
NW - SE - NW
SEC 22 TWP 9S RGE 18W
Permanent Datum GROUND LEVEL Elevation 2165
Log Measured From KELLY BUSHING 8' A.G.L.
Drilling Measured From KELLY BUSHING
Other Services
CNL/CDL
MEL
Elevation
K.B. 2173
D.F. 2171
G.L. 2165

Date	5/3/13		
Run Number	ONE		
Depth Driller	3670		
Depth Logger	3666		
Bottom Logged Interval	3664		
Top Log Interval	00		
Casing Driller	258		
Casing Logger	258		
Bit Size	7.875		
Type Fluid in Hole	CHEMICAL MUD	CHLORIDES 3.000	
Density / Viscosity	9.10 / 53		
pH / Fluid Loss	10.5 / 7.4		
Source of Sample	FLOWLINE		
Rim @ Meas. Temp	.75 @ 74F		
Rmf @ Meas. Temp	.56 @ 74F		
Rmc @ Meas. Temp	.90 @ 74F		
Source of Rmf / Rmc	MEASURED		
Rim @ BHT	.49 @ 113F		
Time Circulation Stopped	2 HOURS		
Time Logger on Bottom			
Maximum Recorded Temperature	113F		
Equipment Number	860		
Location	HAYS, KS.		
Recorded By	IAN MABB		
Witnessed By	MARC DOWNING		

<<< Fold Here >>>

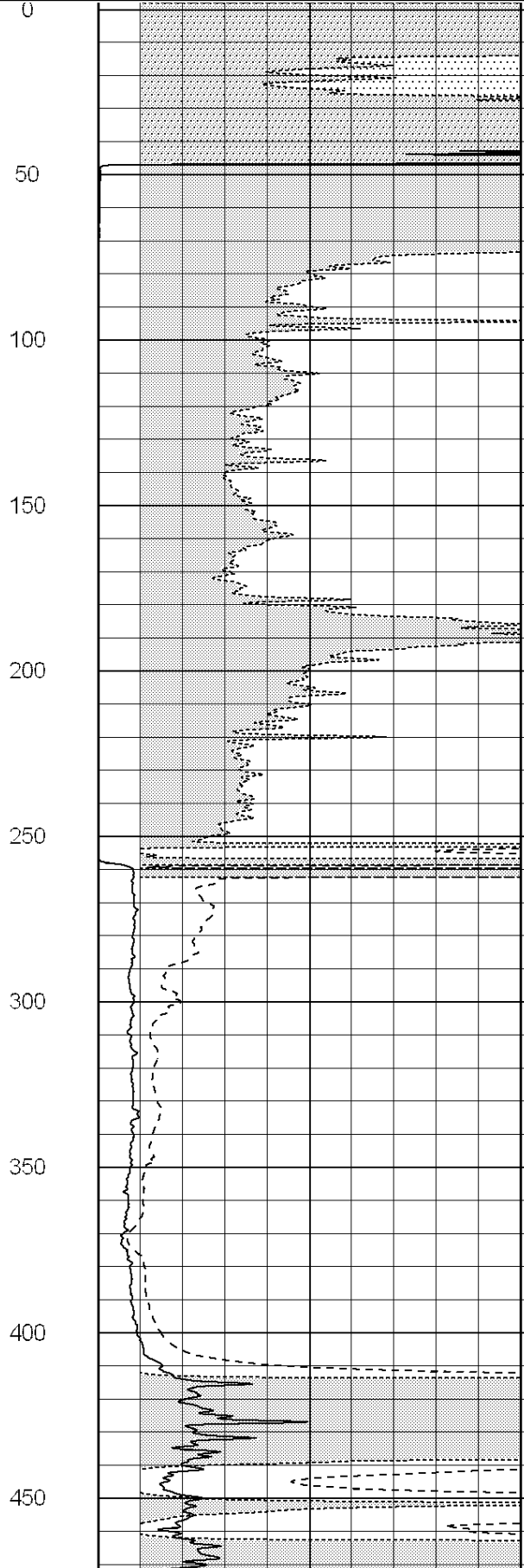
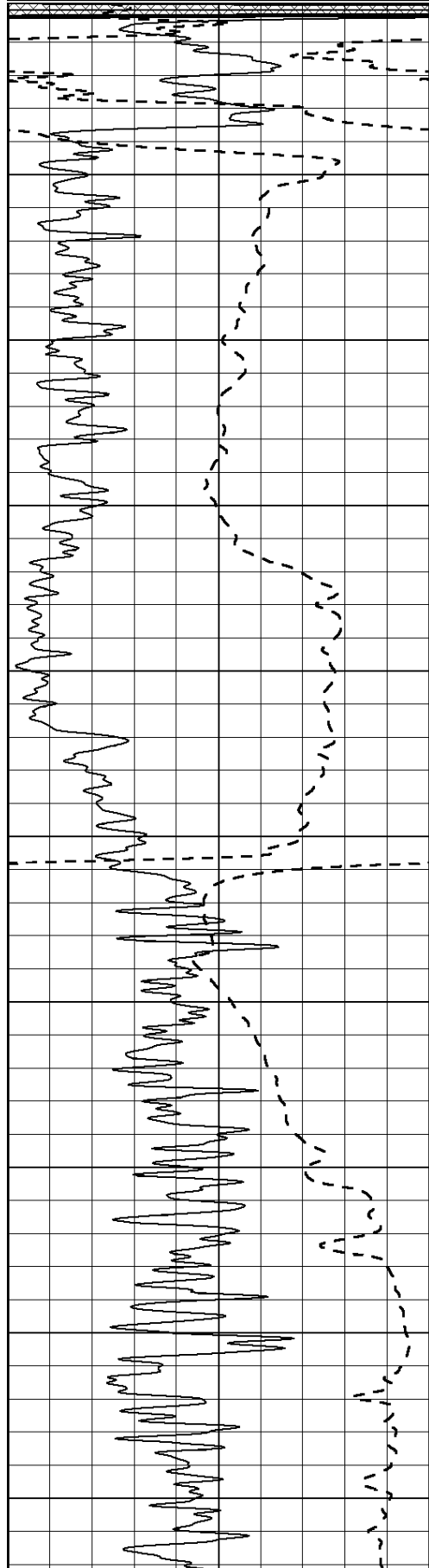
All interpretations are opinions based on inferences from electrical or other measurements and we cannot and do not guarantee the accuracy or correctness of any interpretation, and we shall not, except in the case of gross or willful negligence on our part, be liable or responsible for any loss, costs, damages, or expenses incurred or sustained by anyone resulting from any interpretation made by any of our officers, agents or employees. These interpretations are also subject to our general terms and conditions set out in our current Price Schedule.

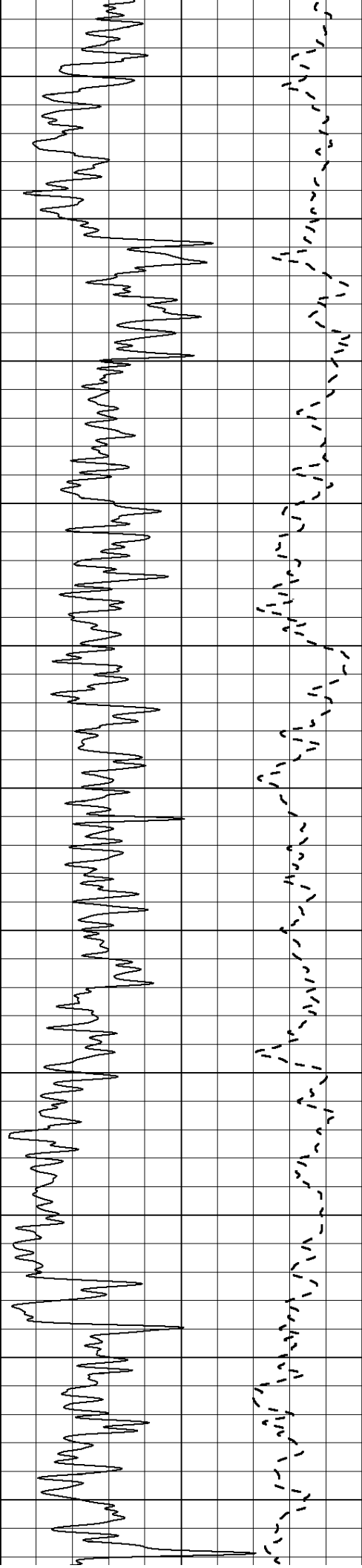
Comments

NABORS COMPLETION & PRODUCTION SERVICES
785-628-6395
THANK YOU FOR YOUR BUSINESS
DIRECTIONS: PLAINVILLE, KS. - 1 NORTH TO RD. W - 2 MILES WEST - 1/2 MILE NORTH - EAST INTO

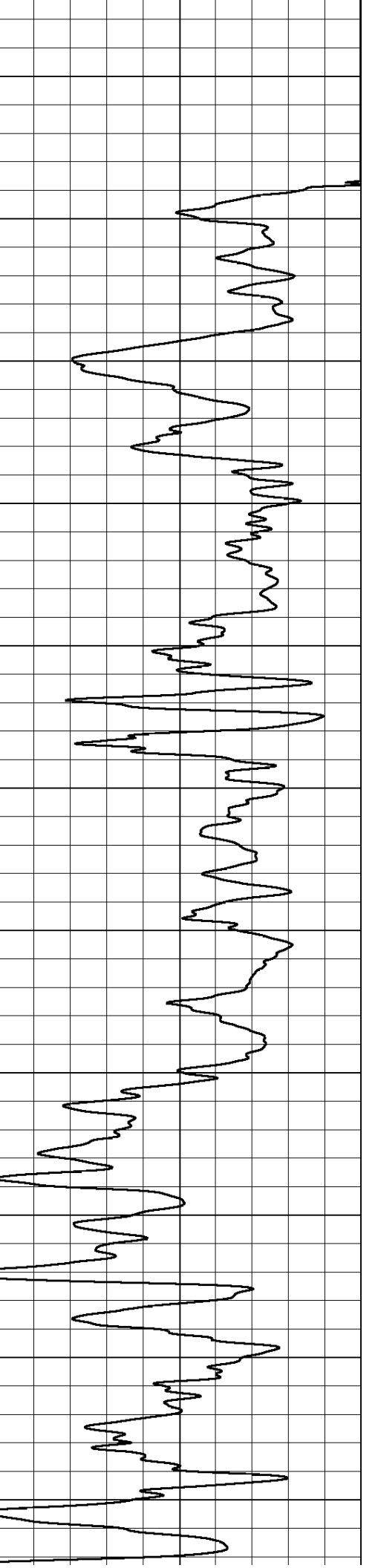
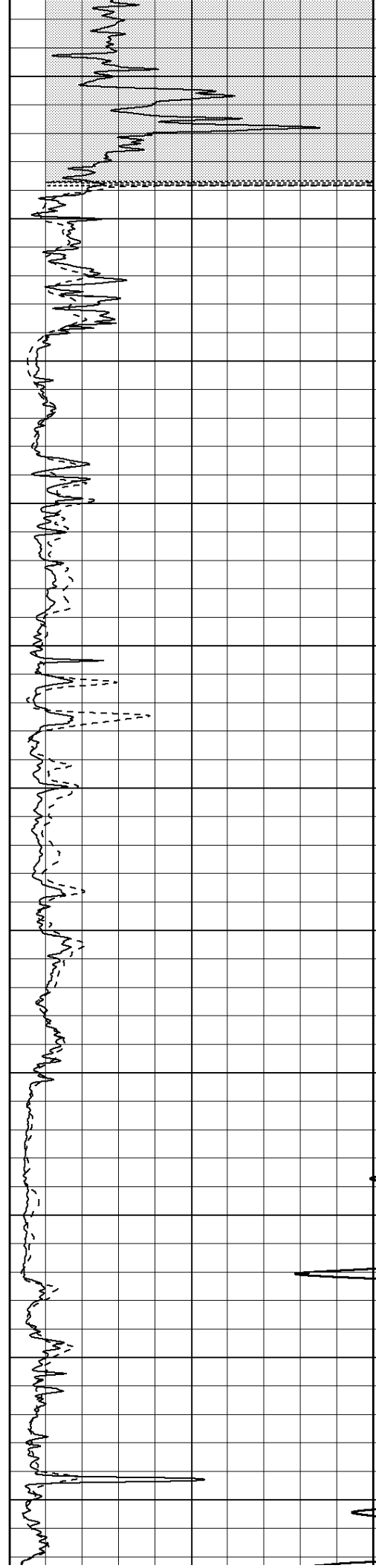
0	Gamma Ray (GAPI)	150
---	------------------	-----

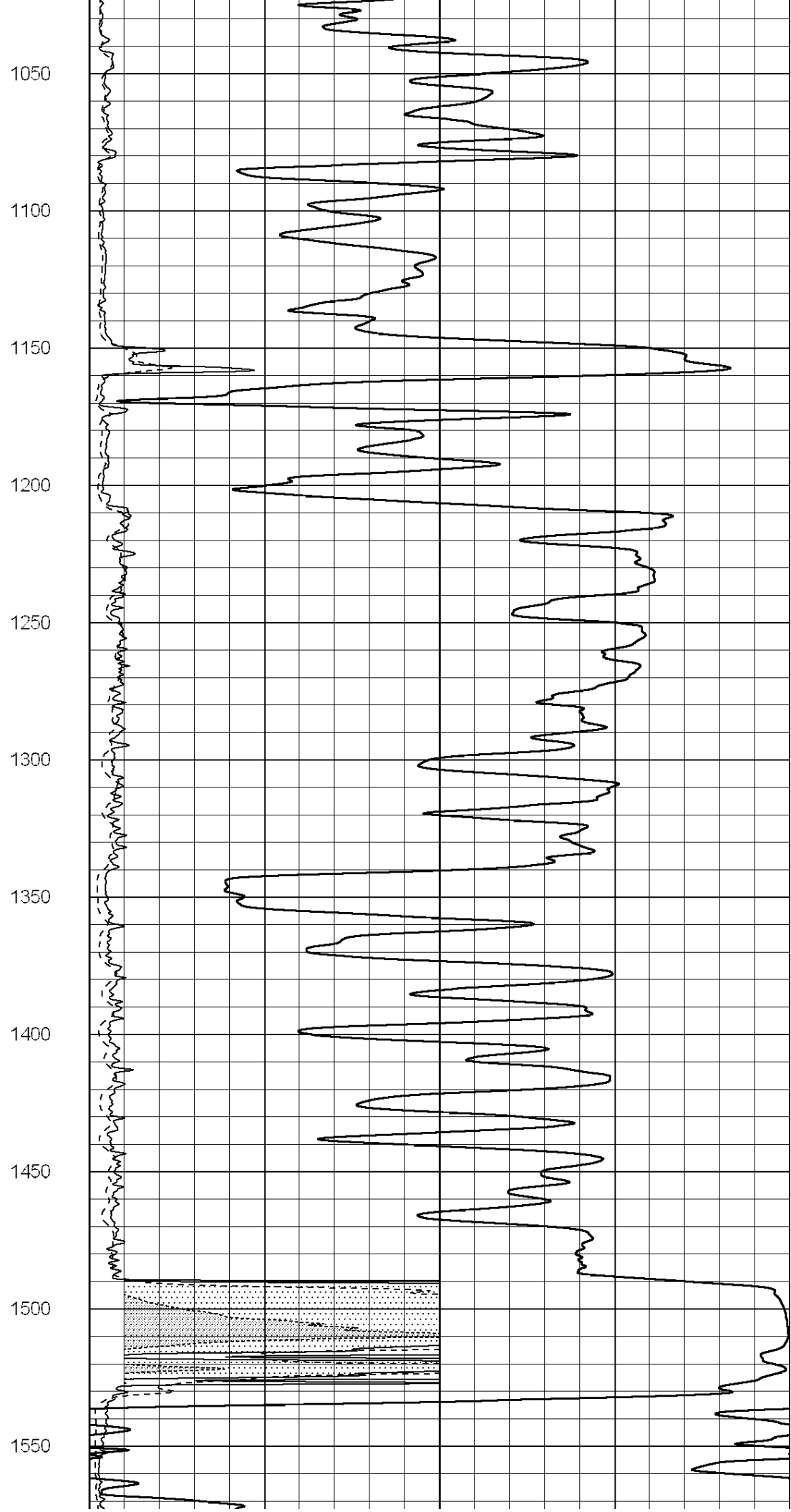
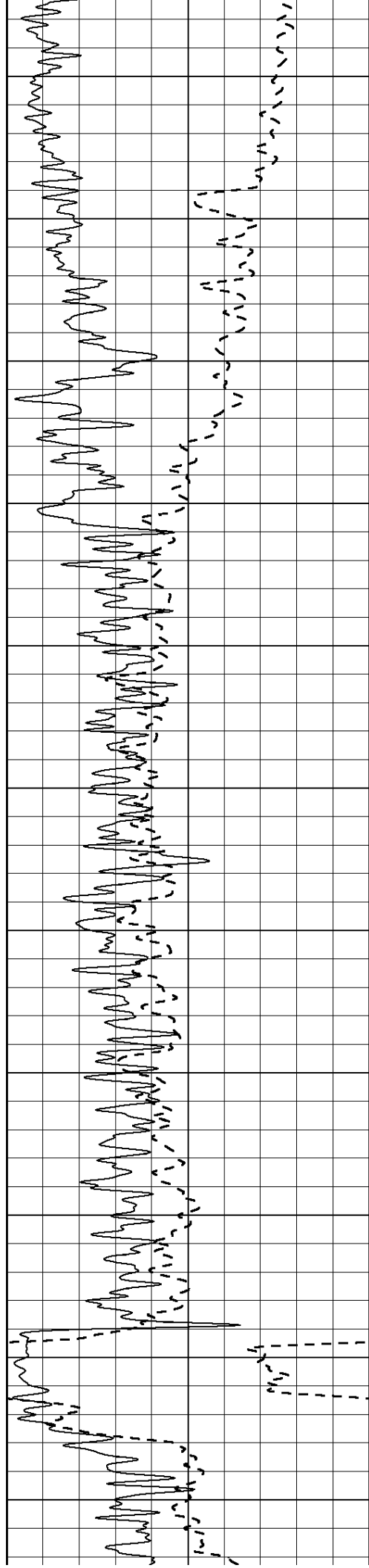
0	RLL3 (Ohm-m)	50
0	Deep Induction (Ohm-m)	50
1000	CILD (mmho/m)	0
50	RILD X10 (Ohm-m)	500
50	RLL3 X10 (Ohm-m)	500

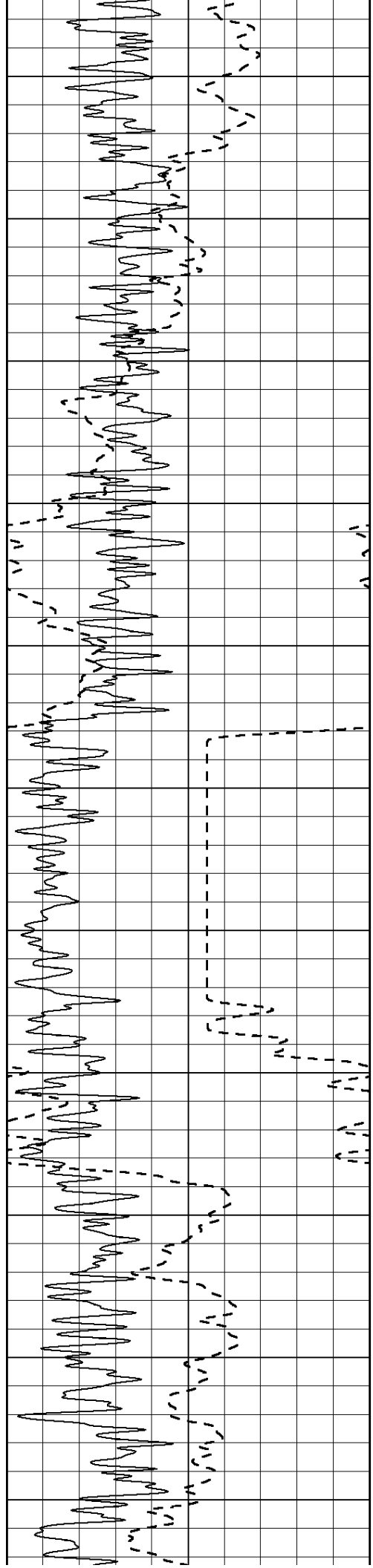




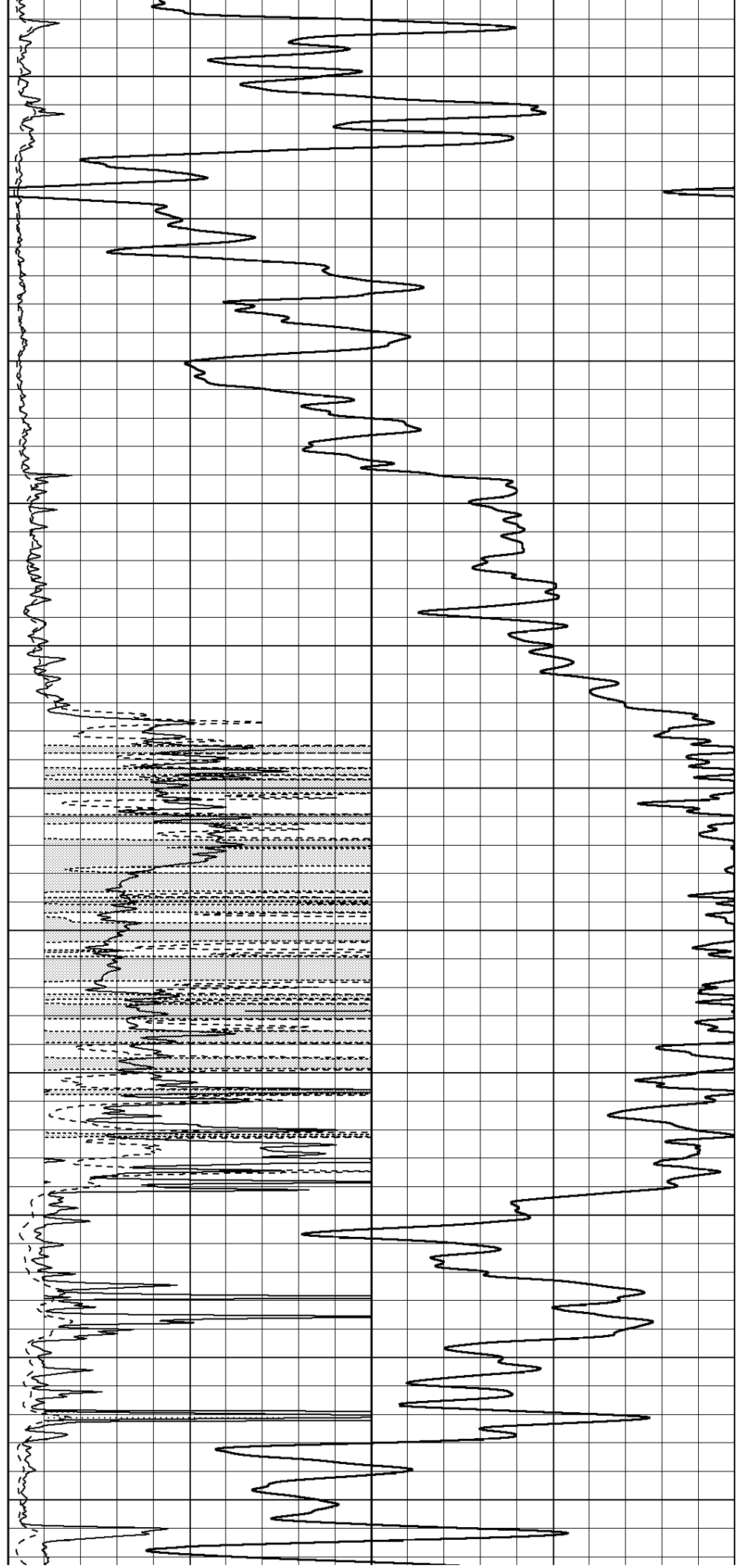
500
550
600
650
700
750
800
850
900
950
1000

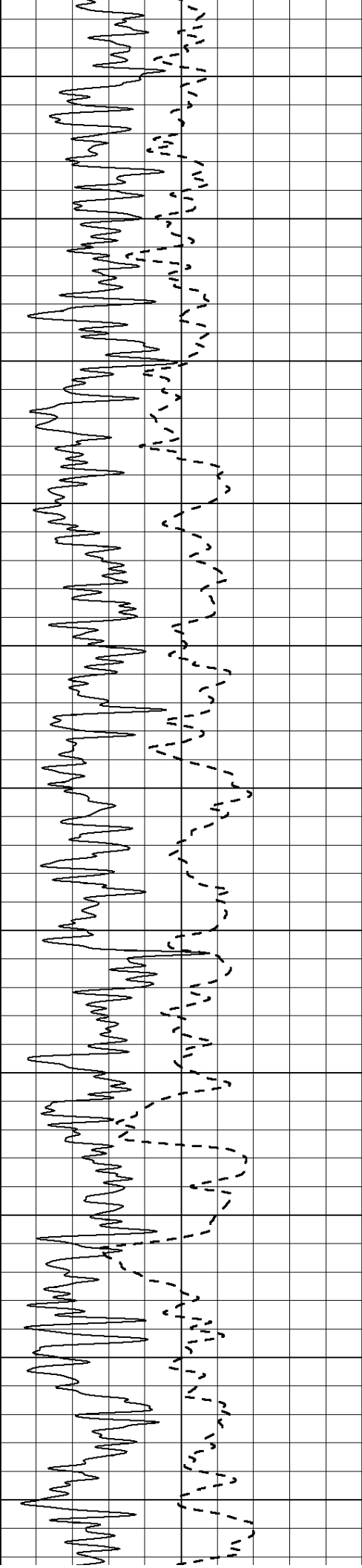




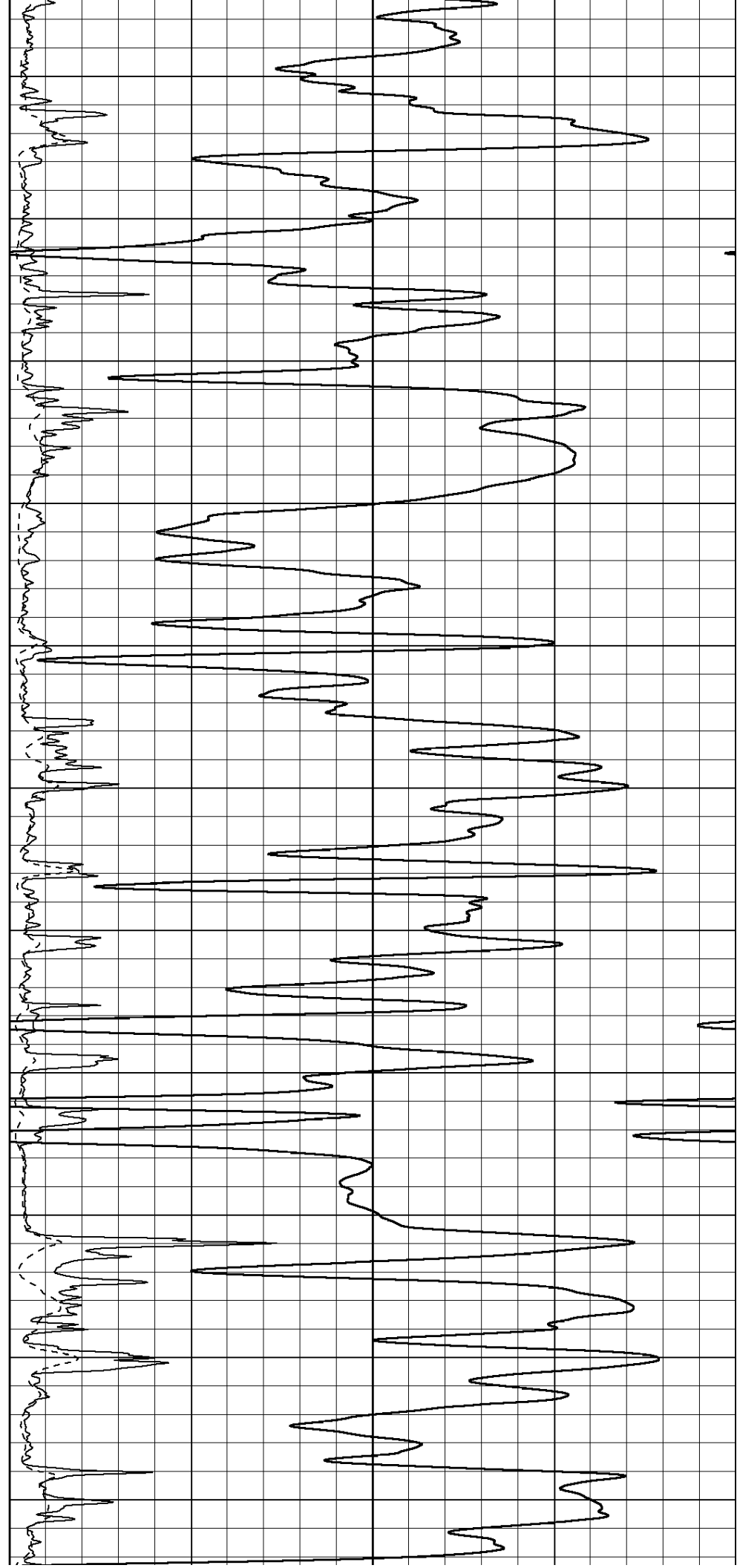


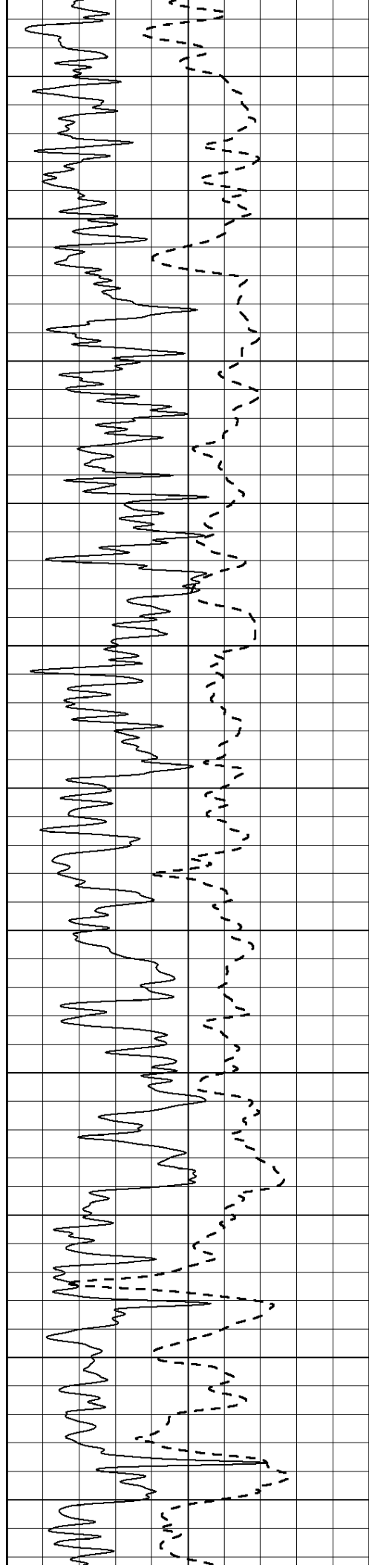
1600
1650
1700
1750
1800
1850
1900
1950
2000
2050
2100





2150
2200
2250
2300
2350
2400
2450
2500
2550
2600
2650





2700

2750

2800

2850

2900

2950

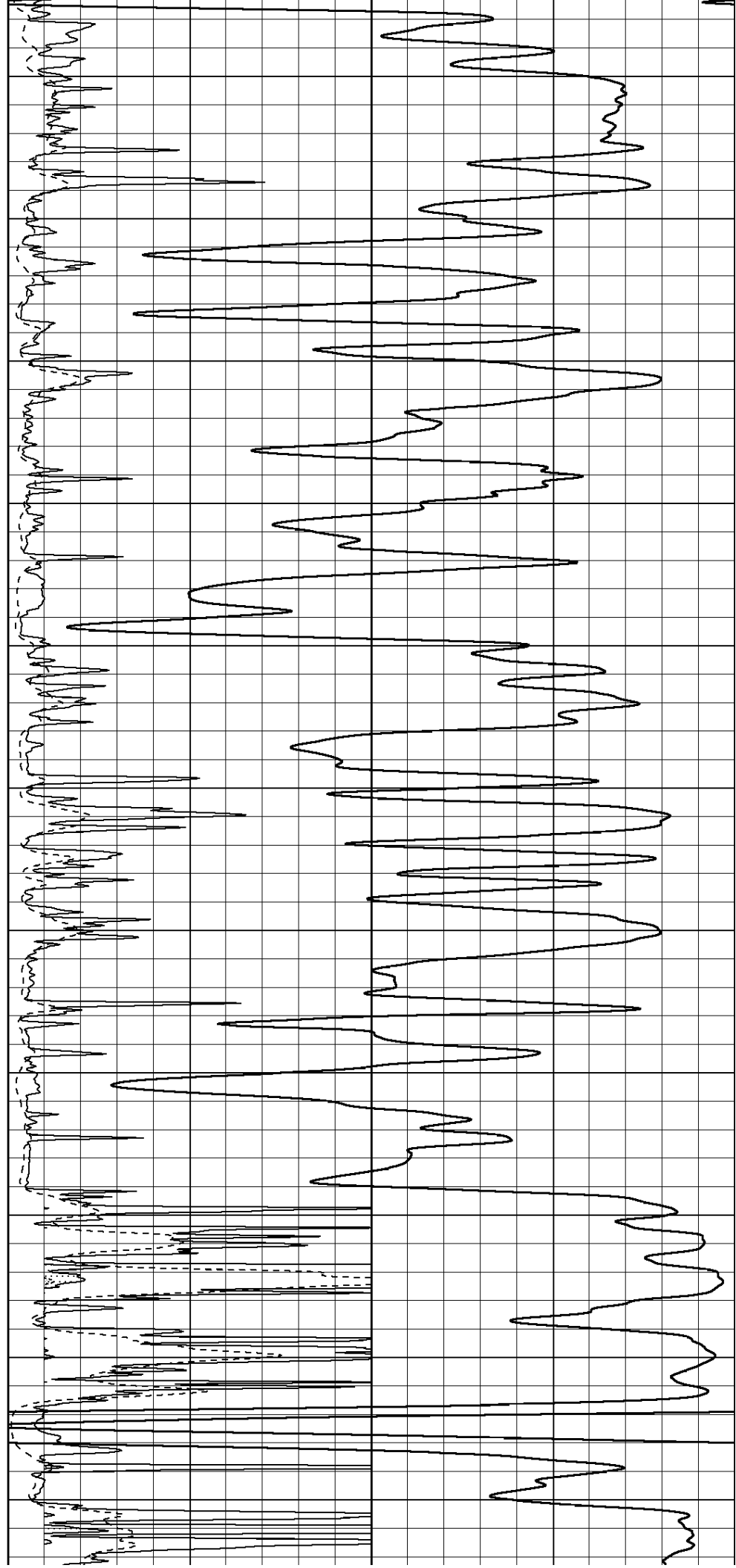
3000

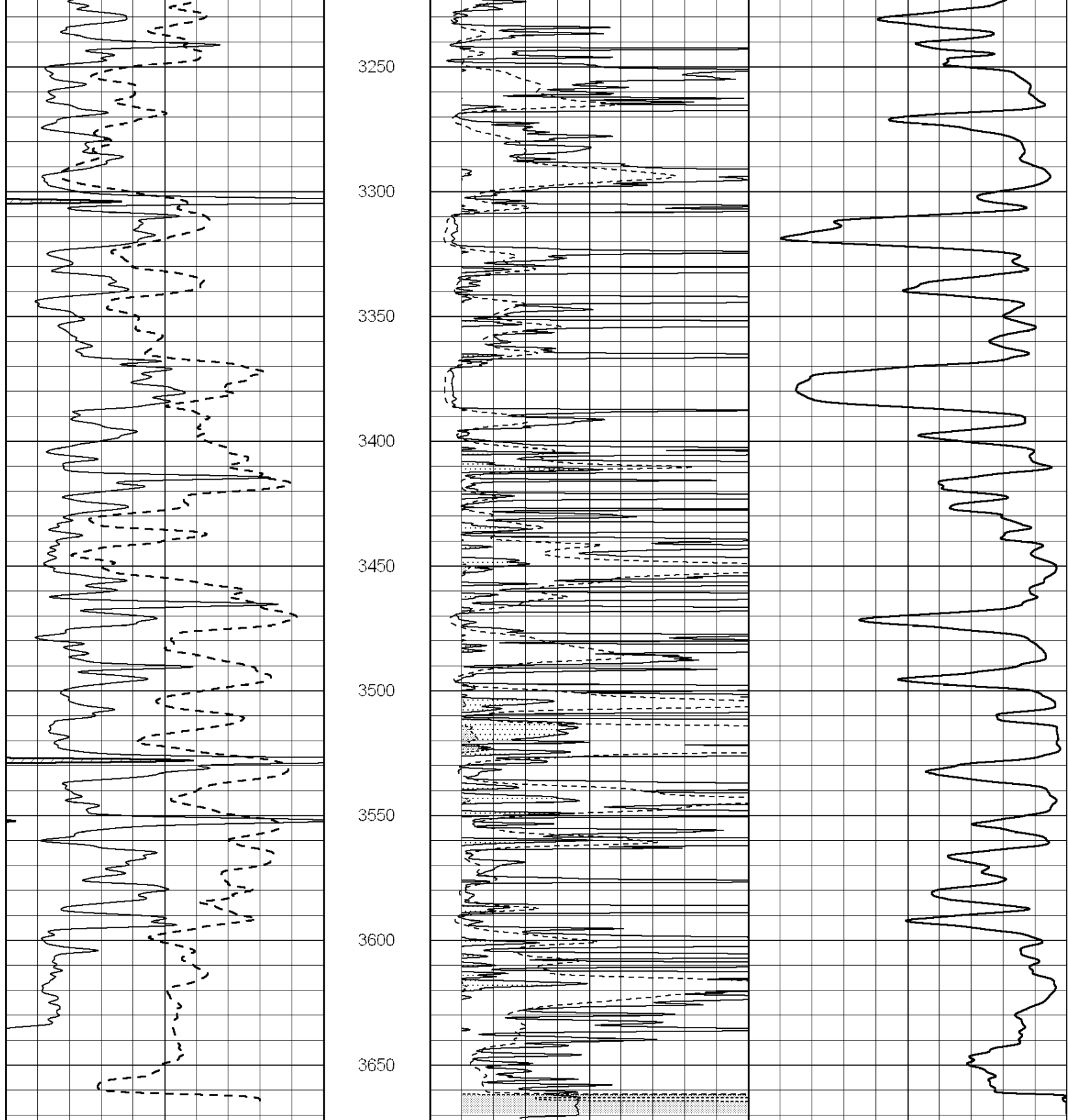
3050

3100

3150

3200



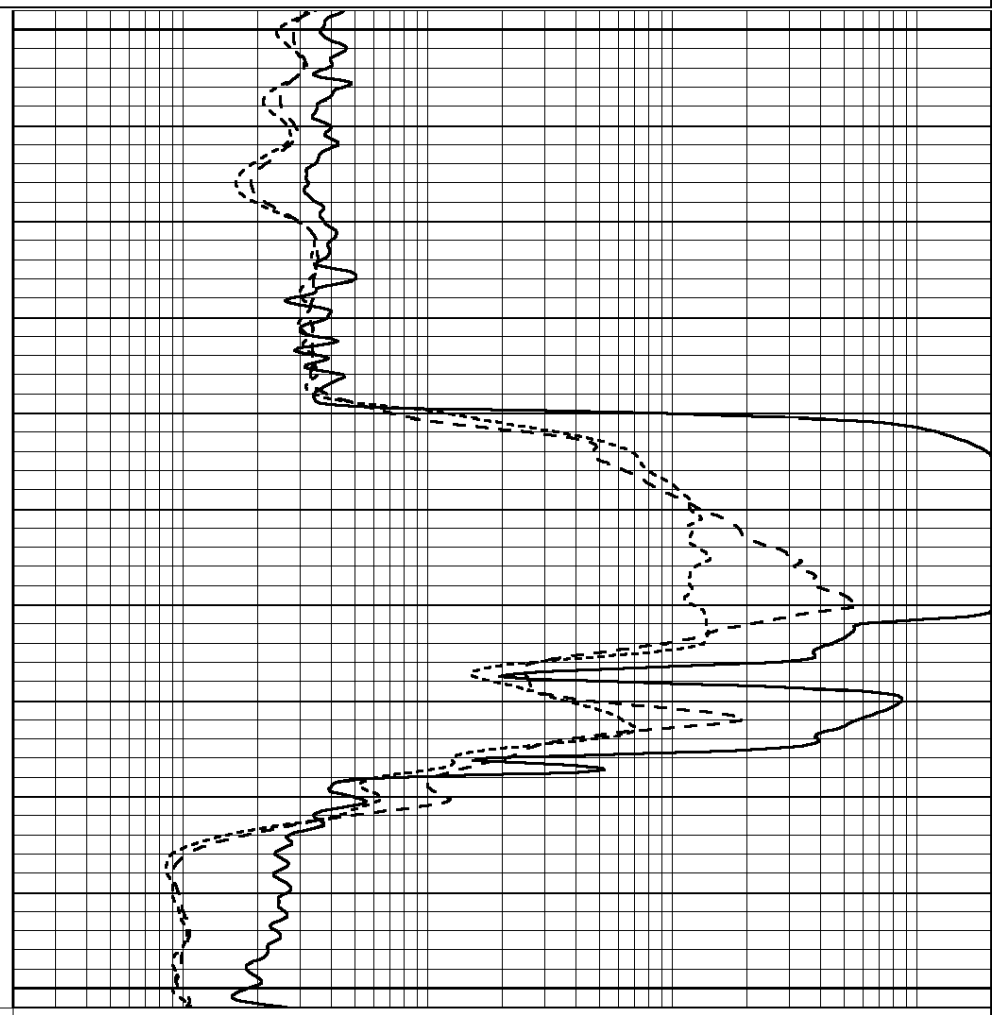
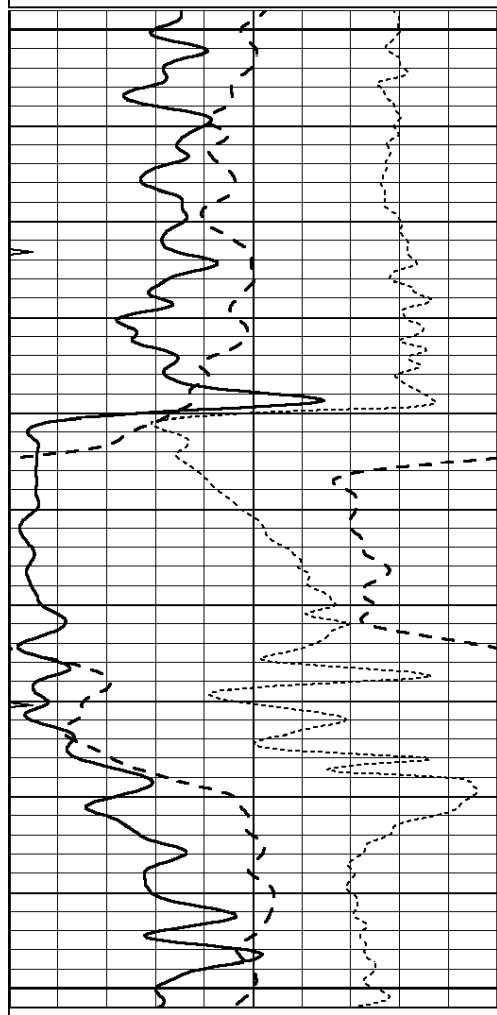


0	Gamma Ray (GAPI)	150
0	RLL3 (Ohm-m)	50
0	Deep Induction (Ohm-m)	50
1000	CILD (mmho/m)	0
50	RILD X10 (Ohm-m)	500
50	RLL3 X10 (Ohm-m)	500

Presentation Format: _dil
 Dataset Creation: Fri May 03 18:32:30 2013 by Calc Open-Cased 090629
 Charted by: Depth in Feet scaled 1:240

0	GAMMA RAY (GAPI)	150
-100	SP (mV)	100
-250	RxoRt	50
0	MINMK	20

0.2	RLL3 (Ohm-m)	2000
0.2	DEEP INDUCTION (Ohm-m)	2000
0.2	MEDIUM INDUCTION (Ohm-m)	2000



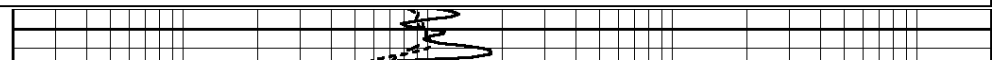
0	GAMMA RAY (GAPI)	150
-100	SP (mV)	100
-250	RxoRt	50
0	MINMK	20

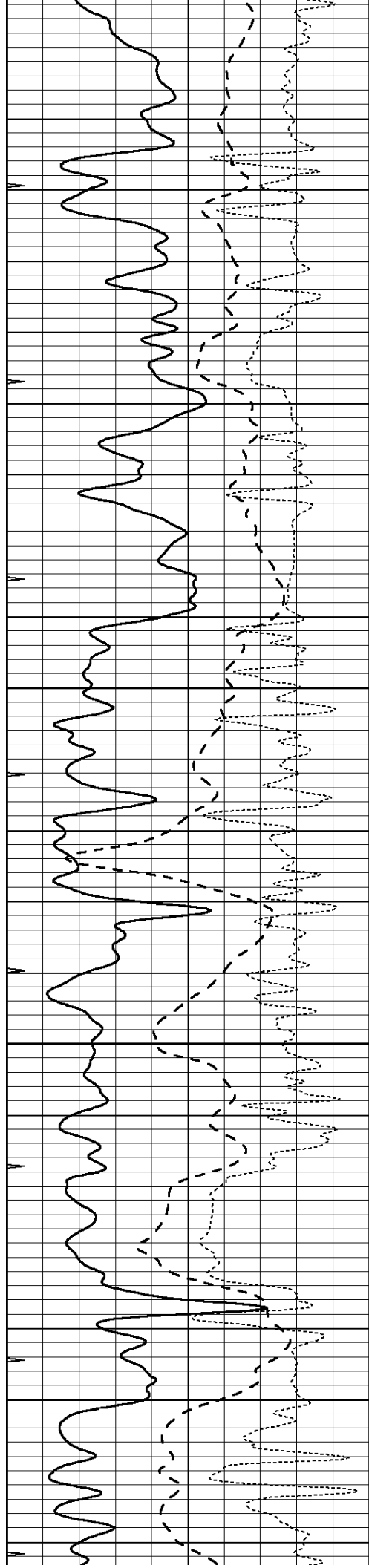
0.2	RLL3 (Ohm-m)	2000
0.2	DEEP INDUCTION (Ohm-m)	2000
0.2	MEDIUM INDUCTION (Ohm-m)	2000

Database File: 010995ddn.db
 Dataset Pathname: pass3.1
 Presentation Format: _dil
 Dataset Creation: Fri May 03 18:02:42 2013 by Calc Open-Cased 090629
 Charted by: Depth in Feet scaled 1:240

0	GAMMA RAY (GAPI)	150
-100	SP (mV)	100
-250	RxoRt	50
0	MINMK	20

0.2	RLL3 (Ohm-m)	2000
0.2	DEEP INDUCTION (Ohm-m)	2000
0.2	MEDIUM INDUCTION (Ohm-m)	2000



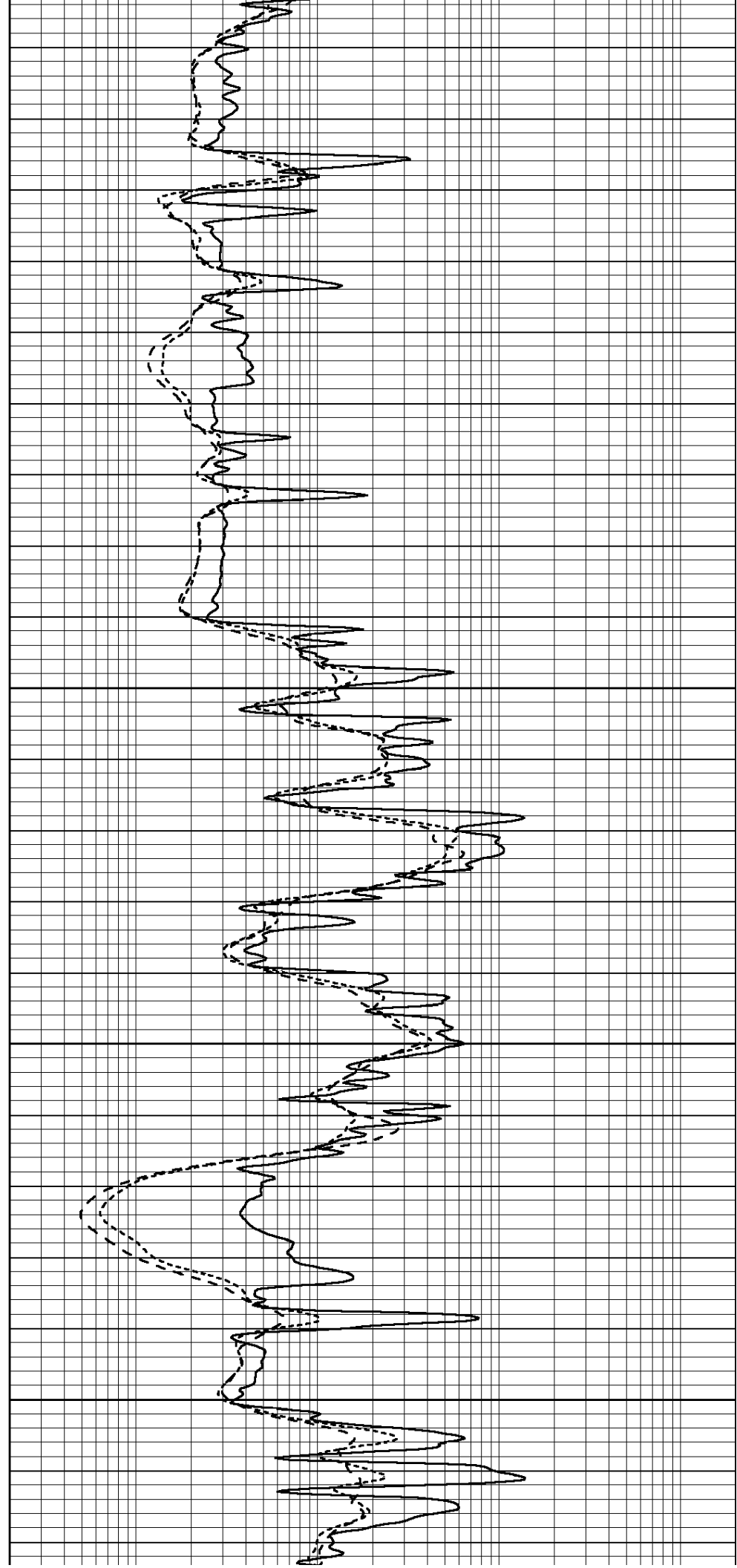


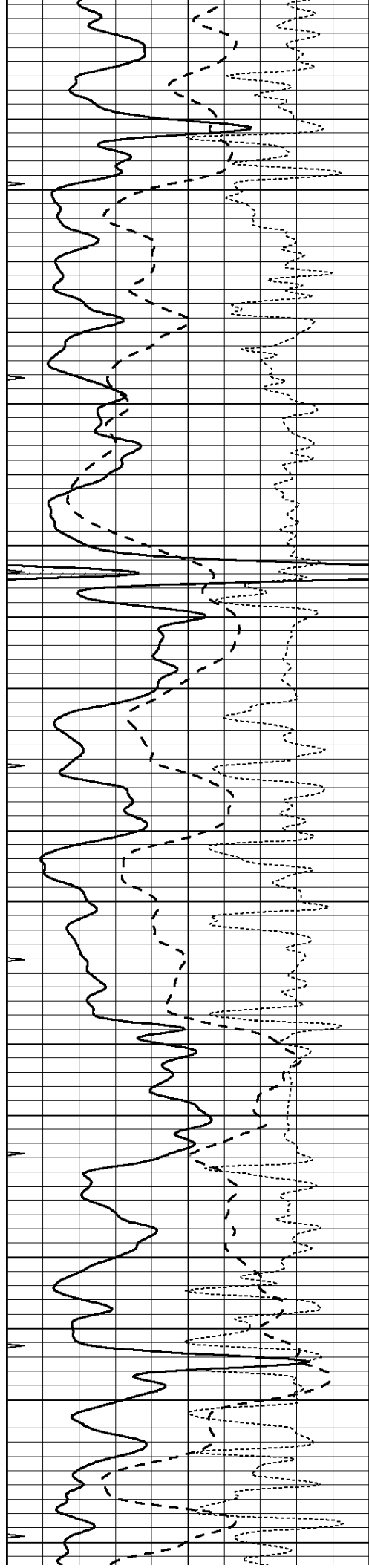
3050

3100

3150

3200



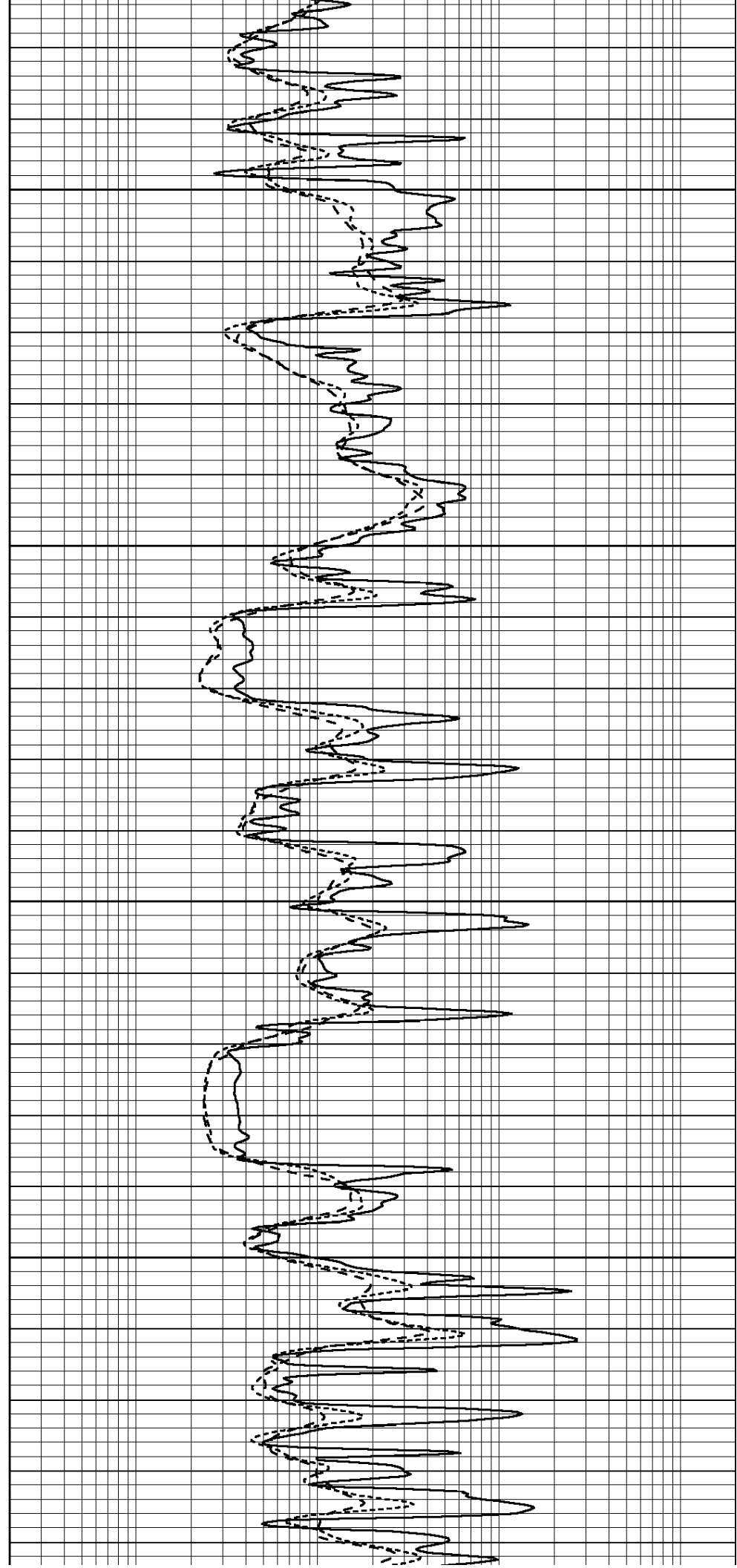


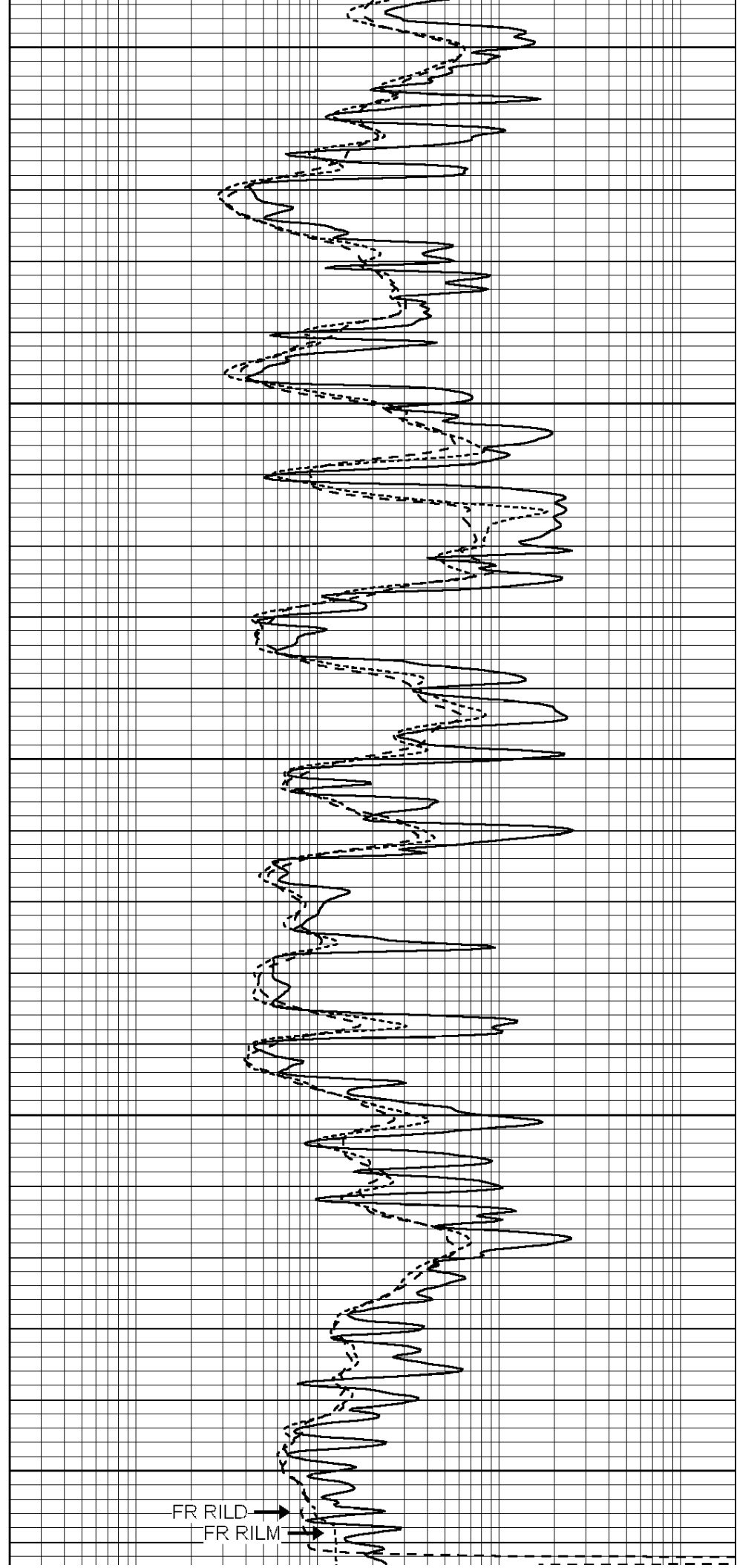
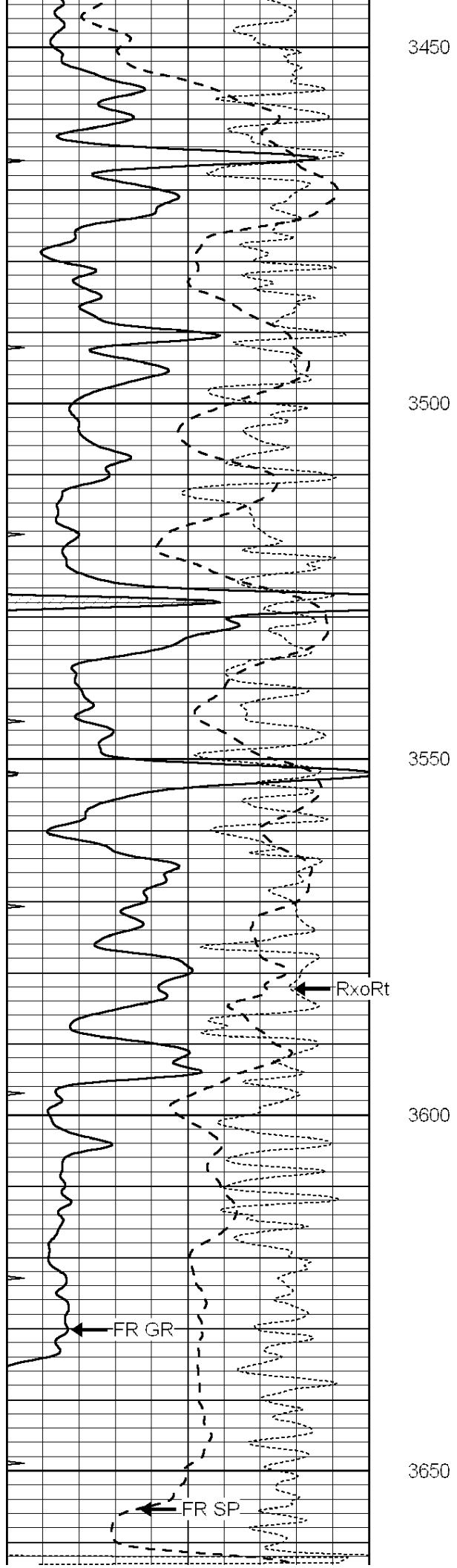
3250

3300

3350

3400





LTD 3666

FR RLL3

0	GAMMA RAY (GAPI)	150
-100	SP (mV)	100
-250	RxoRt	50
0	MINMK	20

0.2	RLL3 (Ohm-m)	2000
0.2	DEEP INDUCTION (Ohm-m)	2000
0.2	MEDIUM INDUCTION (Ohm-m)	2000



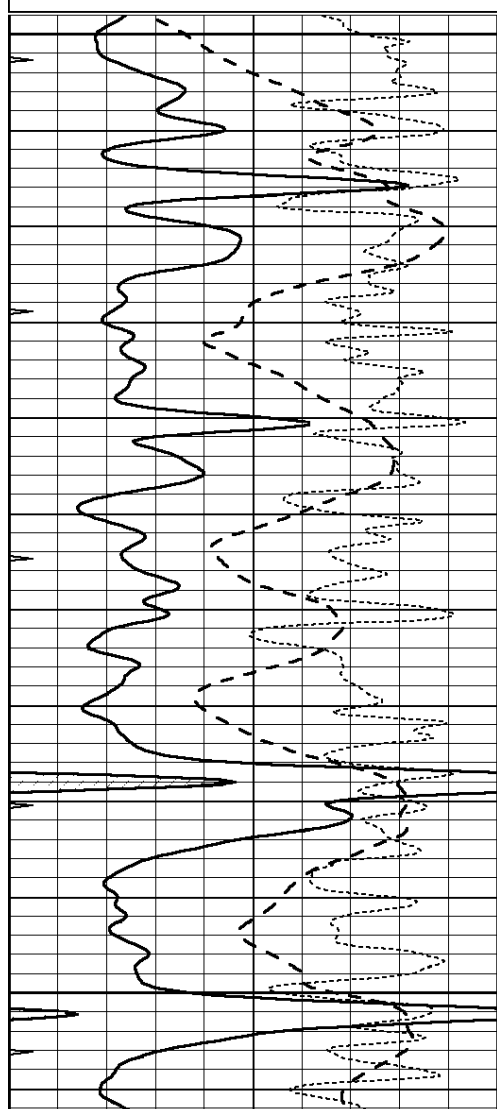
**COMPLETION
& PRODUCTION
SERVICES CO.**

REPEAT SECTION

Database File: 010995ddn.db
 Dataset Pathname: pass2.2
 Presentation Format: _dil
 Dataset Creation: Fri May 03 17:37:08 2013 by Calc Open-Cased 090629
 Charted by: Depth in Feet scaled 1:240

0	GAMMA RAY (GAPI)	150
-100	SP (mV)	100
-250	RxoRt	50
0	MINMK	20

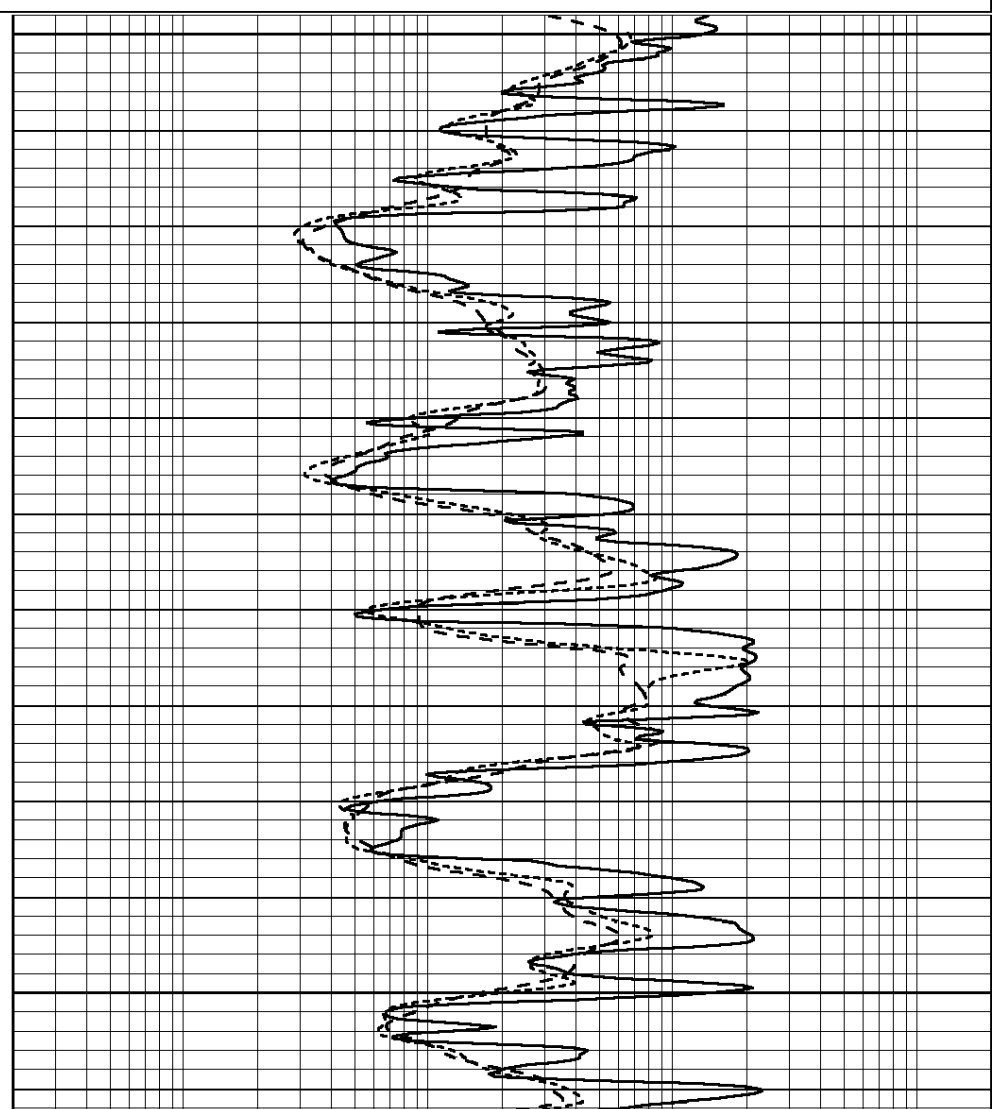
0.2	RLL3 (Ohm-m)	2000
0.2	DEEP INDUCTION (Ohm-m)	2000
0.2	MEDIUM INDUCTION (Ohm-m)	2000

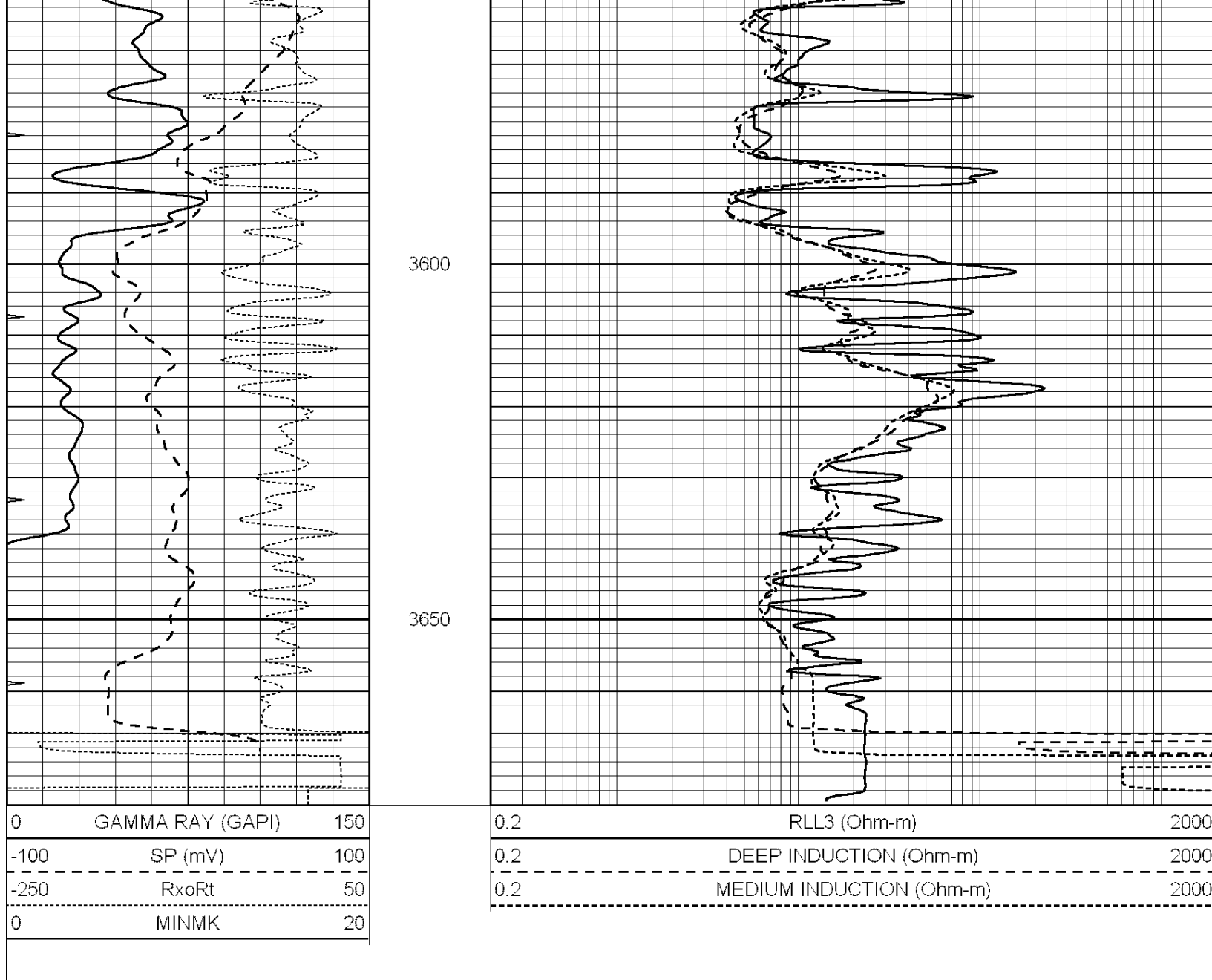


3450

3500

3550





Calibration Report

Database File: 010995ddn.db
 Dataset Pathname: pass3.2
 Dataset Creation: Fri May 03 18:32:30 2013 by Calc Open-Cased 090629

Dual Induction Calibration Report

Serial-Model: PROBE7-DILG
 Surface Cal Performed: Thu Apr 25 07:54:19 2013
 Downhole Cal Performed: Sat Jan 19 19:51:38 2013
 After Survey Verification Performed: Sat Jan 19 19:51:38 2013

Surface Calibration

Loop:	Readings			References			Results	
	Air	Loop	V	Air	Loop	mmho/m	m	b
Deep	0.793	0.790	V	0.000	400.000	mmho/m	620.000	4.000
Medium	0.992	1.002	V	0.000	464.000	mmho/m	680.000	-42.000
Internal:	Zero	Cal	V	Zero	Cal	mmho/m	m	b
Deep	0.041	0.642	V	0.000	400.000	mmho/m	664.874	-27.011
Medium	0.035	0.802	V	0.000	464.000	mmho/m	604.936	-21.367

Downhole Calibration								
	Readings			References			Results	
	Zero	Cal		Zero	Cal		m'	b'
Deep	135384.000	27094.500	mmho/m	135400.000	27082.400	mmho/m	1.000	-19.259
Medium	-47330.100	-9381.740	mmho/m	-47327.100	-9389.280	mmho/m	1.000	-10.154
LL3		7.322	V		1400.000	Ohm-m		
		0.038	V		20.000	Ohm-m		
		-7.273	V		4000.000	mmho-m		

After Survey Verification								
	Readings			Targets			Results	
	Zero	Cal		Zero	Cal		m'	b'
Deep	0.000	0.000	mmho/m	135384.000	27094.500	mmho/m	1.000	0.000
Medium	0.000	0.000	mmho/m	-47330.100	-9381.740	mmho/m	1.000	0.000
LL3		0.000	Ohm-m		1400.000	Ohm-m		
		0.000	Ohm-m		20.000	Ohm-m		
		0.000	mmho-m		4000.000	mmho-m		

Compensated Density Calibration Report

Serial-Model:	GEAR1-GEARHART
Source / Verifier:	147 / 147
Master Calibration Performed:	Thu Apr 25 08:46:02 2013

Master Calibration						
	Density		Far Detector	Near Detector		
Magnesium	1.710	g/cc	1205.77	610.74	cps	
Aluminum	2.600	g/cc	271.21	419.72	cps	
Spine Angle = 75.89			Density/Spine Ratio = 0.579			
	Size		Reading			
Small Ring	7.60	in	4.69	V		
Large Ring	14.00	in	6.52	V		

Compensated Neutron Calibration Report

Serial Number:	NEU_4I
Tool Model:	G

CALIBRATION						
Detector	Readings		Target	Normalization		
Short Space	1.00	cps	1.00	cps	1.0000	
Long Space	1.00	cps	1.00	cps	1.0000	

Gamma Ray Calibration Report

Serial Number:	GR5	
Tool Model:	OPEN	
Performed:	Fri Apr 26 22:00:59 2013	
Calibrator Value:	1.0	GAPI
Background Reading:	0.0	cps
Calibrator Reading:	1.0	cps
Sensitivity:	2.0000	GAPI/cps