



**COMPLETION
& PRODUCTION
SERVICES CO.**

**MICRO
LOG**

Company GORE OIL COMPANY
Well CARMICHAEL #1
Field WILDCAT
County ROOKS State KANSAS

Company GORE OIL COMPANY
Well CARMICHAEL #1
Field WILDCAT
County ROOKS
State KANSAS

Location: API #: 15-163-24107-00-00
2200' FNL & 3200' FEL
NW - SE - NW
SEC 22 TWP 9S RGE 18W
Permanent Datum GROUND LEVEL Elevation 2165
Log Measured From KELLY BUSHING 8' A.G.L.
Drilling Measured From KELLY BUSHING
Other Services
CNL/CDL
DIL
Elevation
K.B. 2173
D.F. 2171
G.L. 2165

Date	5/3/13		
Run Number	TWO		
Depth Driller	3670		
Depth Logger	3666		
Bottom Logged Interval	3664		
Top Log Interval	3000		
Casing Driller	258		
Casing Logger	258		
Bit Size	7.875		
Type Fluid in Hole	CHEMICAL MUD	CHLORIDES 3.000	
Density / Viscosity	9.10 / 53		
pH / Fluid Loss	10.5 / 7.4		
Source of Sample	FLOWLINE		
Rim @ Meas. Temp	.75 @ 74F		
Rmf @ Meas. Temp	.56 @ 74F		
Rmc @ Meas. Temp	.90 @ 74F		
Source of Rmf / Rmc	MEASURED		
Rim @ BHT	.49 @ 113F		
Time Circulation Stopped	2 HOURS		
Time Logger on Bottom			
Maximum Recorded Temperature	113F		
Equipment Number	860		
Location	HAYS, KS.		
Recorded By	IAN MABB		
Witnessed By	MARC DOWNING		

<<< Fold Here >>>

All interpretations are opinions based on inferences from electrical or other measurements and we cannot and do not guarantee the accuracy or correctness of any interpretation, and we shall not, except in the case of gross or willful negligence on our part, be liable or responsible for any loss, costs, damages, or expenses incurred or sustained by anyone resulting from any interpretation made by any of our officers, agents or employees. These interpretations are also subject to our general terms and conditions set out in our current Price Schedule.

Comments

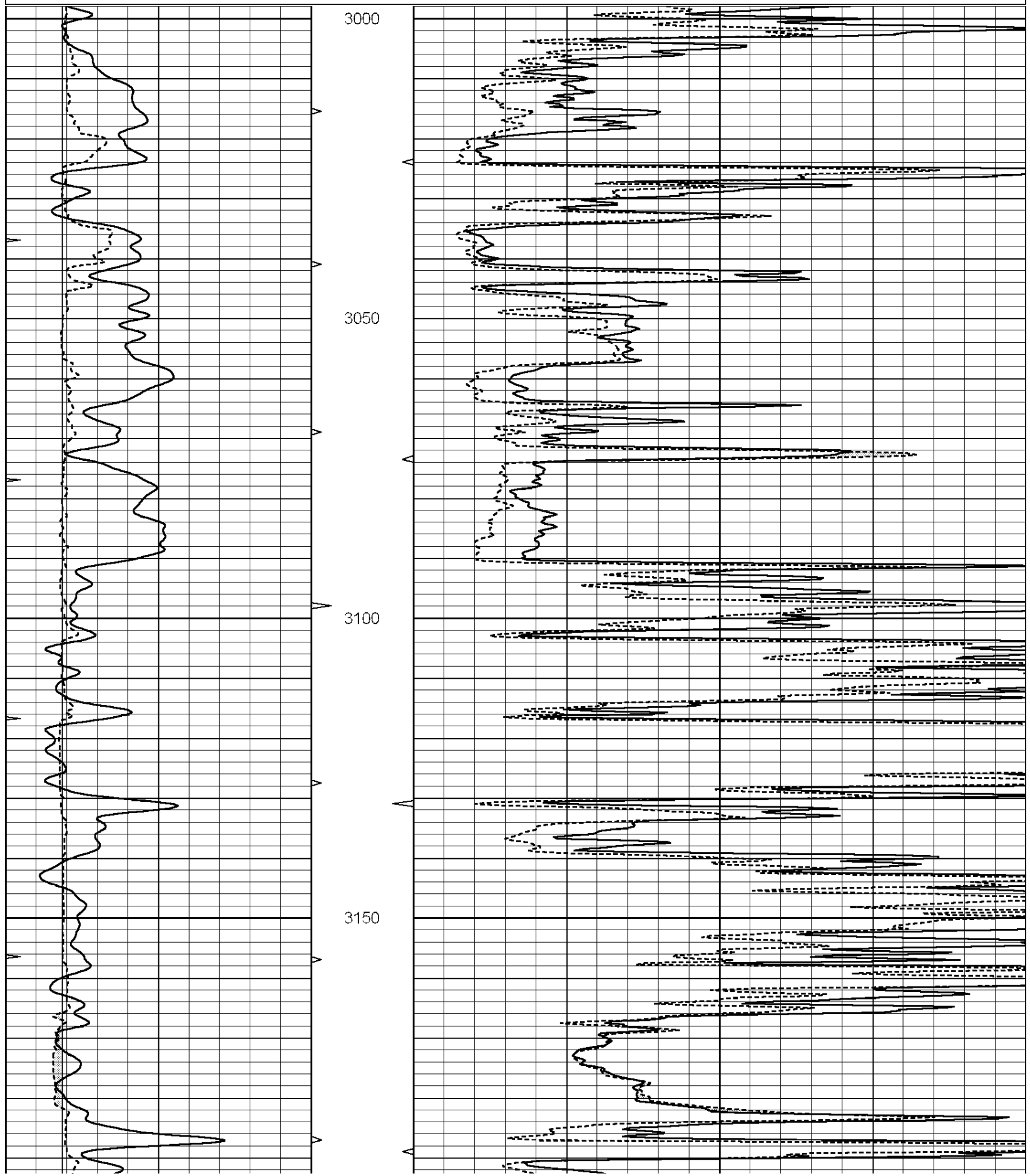
**NABORS COMPLETION & PRODUCTION SERVICES
785-628-6395**

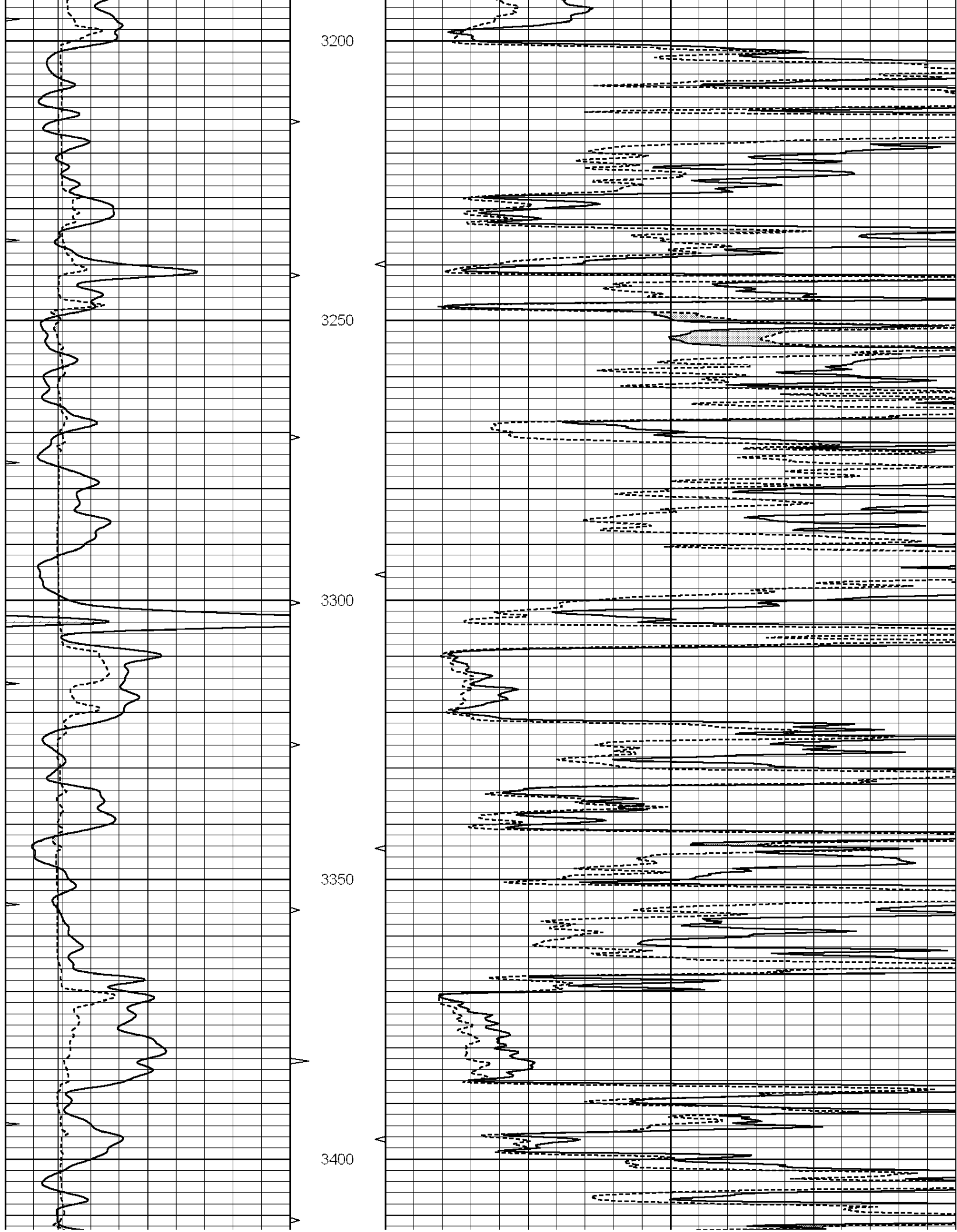
THANK YOU FOR YOUR BUSINESS

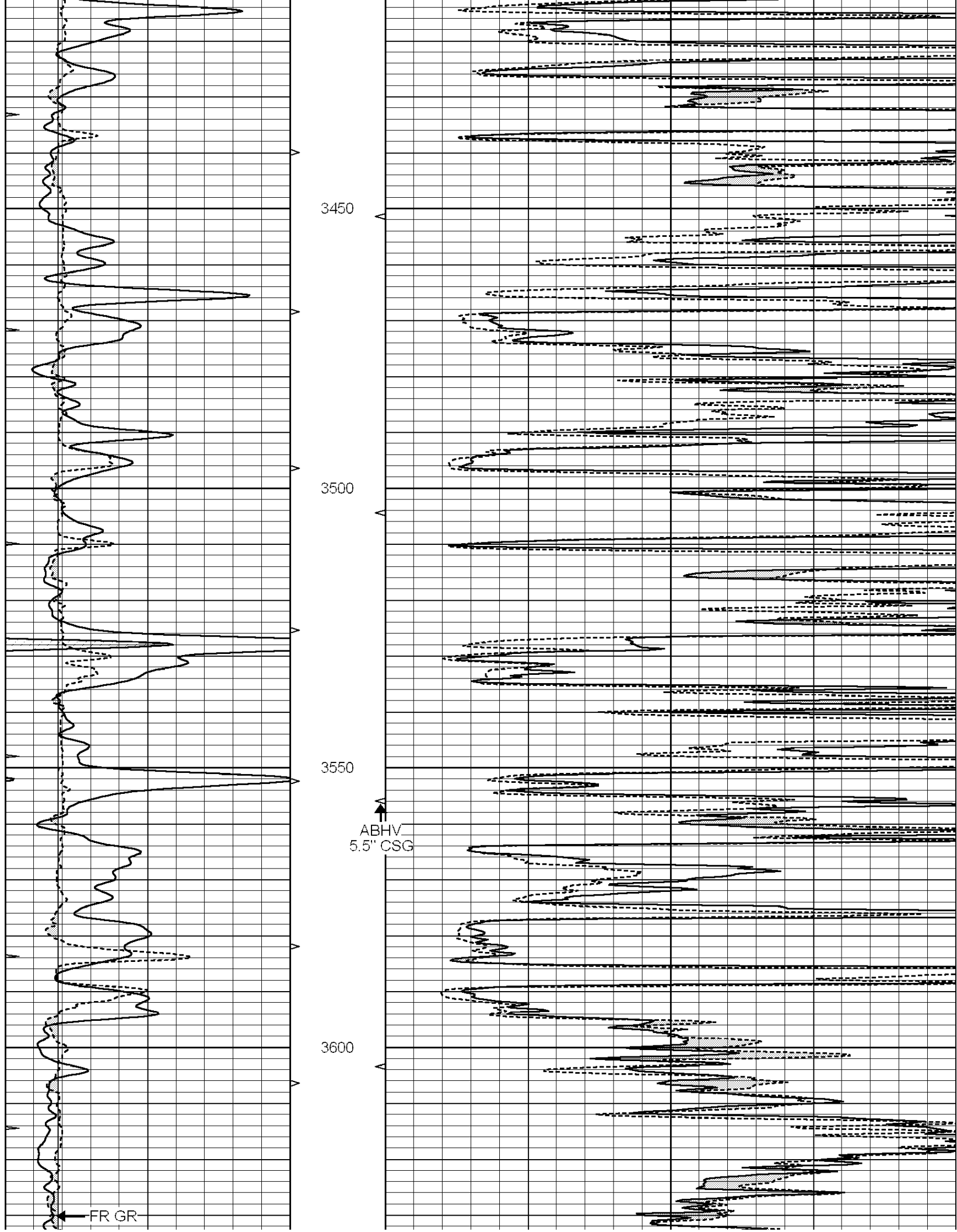
DIRECTIONS: PLAINVILLE, KS. - 1 NORTH TO RD. W - 2 MILES WEST - 1/2 MILE NORTH - EAST INTO

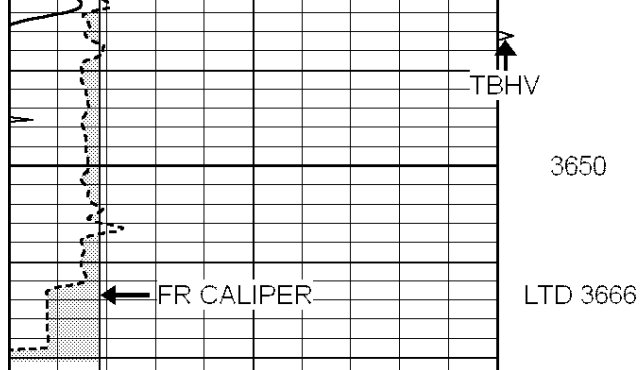
0	GAMMA RAY (GAPI)	150
6	MELCAL (in)	16
0	MINMK	20

0	MEL1.5 (Ohm-m)	40
0	MEL2.0 (Ohm-m)	40

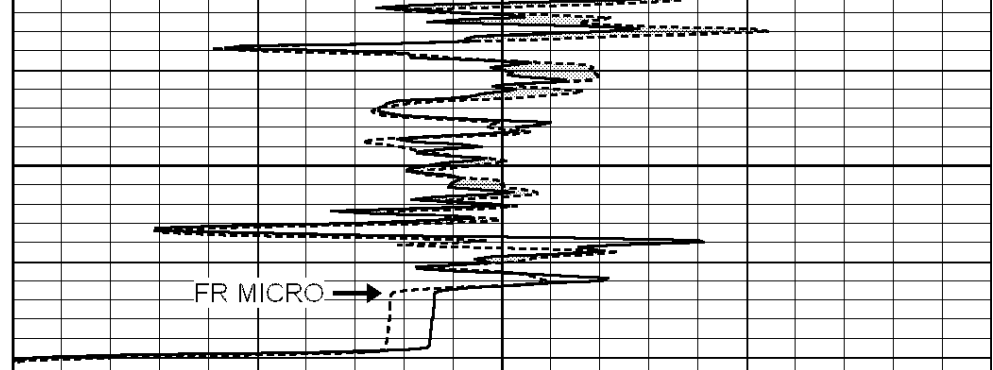








0	GAMMA RAY (GAPI)	150
6	MELCAL (in)	16
0	MINMK	20



0	MEL1.5 (Ohm-m)	40
0	MEL2.0 (Ohm-m)	40

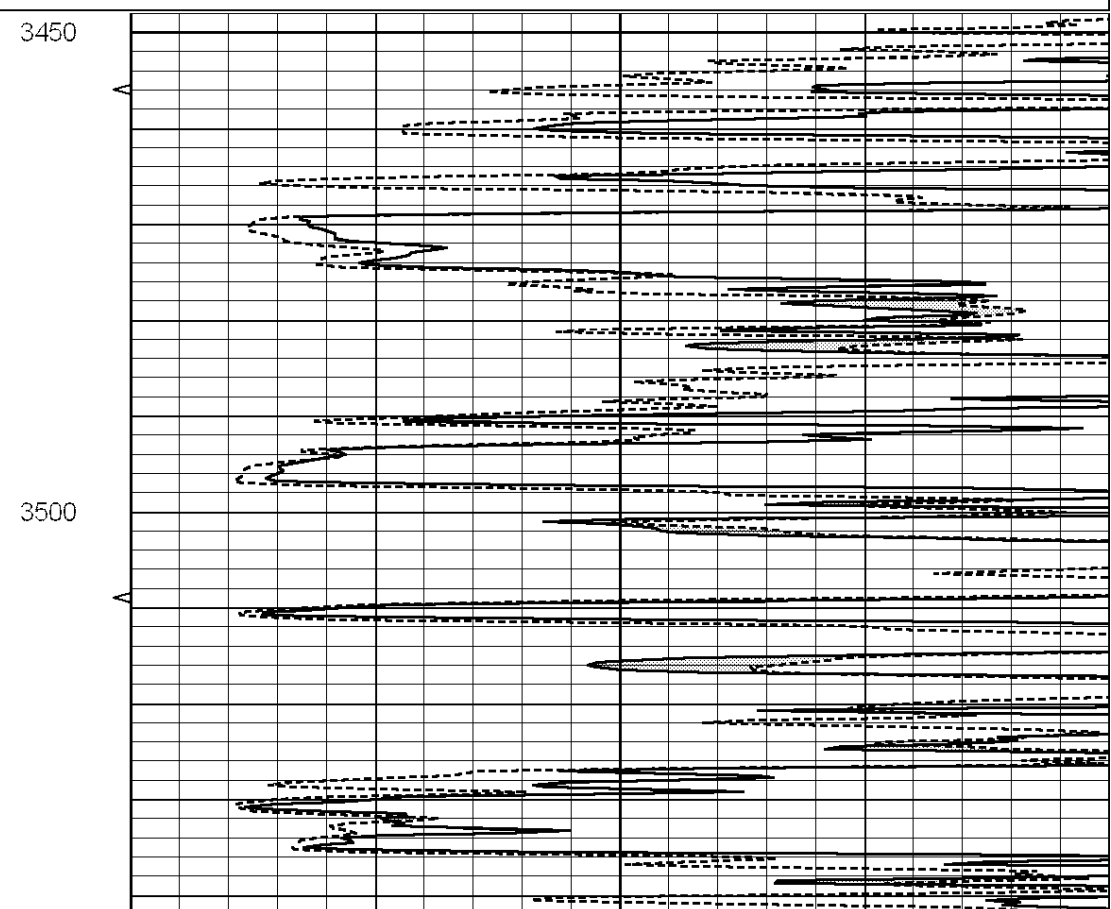
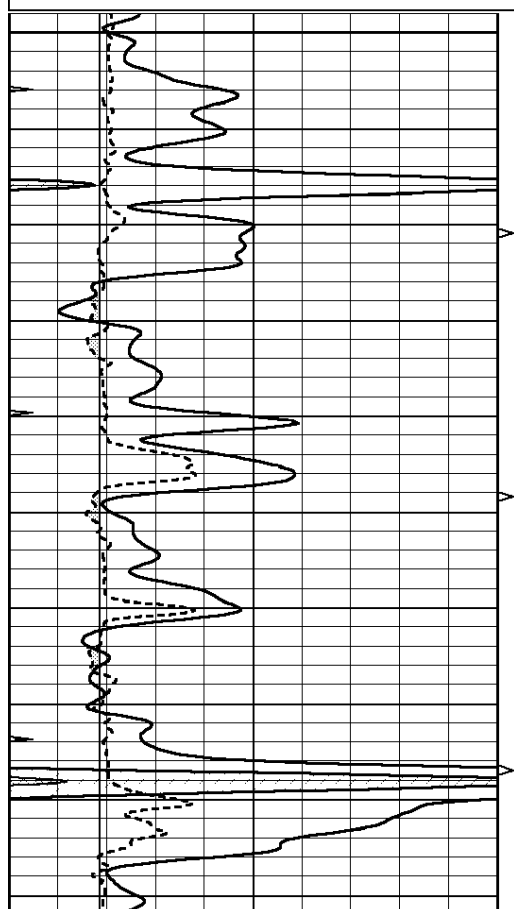


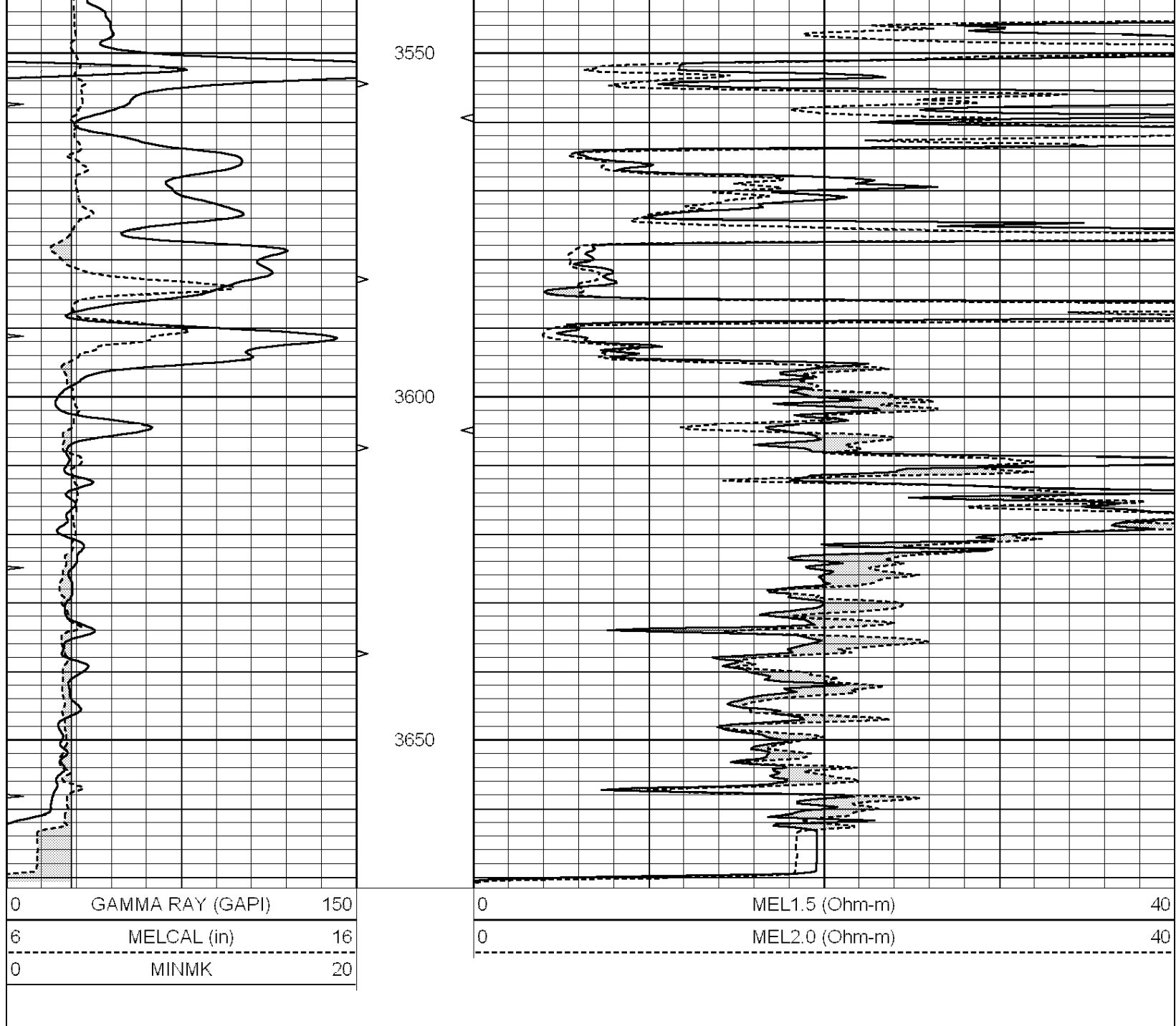
REPEAT SECTION

Database File: 010995ddn.db
 Dataset Pathname: pass6.1
 Presentation Format: _micro
 Dataset Creation: Fri May 03 19:20:22 2013 by Calc Open-Cased 090629
 Charted by: Depth in Feet scaled 1:240

0	GAMMA RAY (GAPI)	150
6	MELCAL (in)	16
0	MINMK	20

0	MEL1.5 (Ohm-m)	40
0	MEL2.0 (Ohm-m)	40





Calibration Report

Database File: 010995ddn.db
 Dataset Pathname: pass7.2
 Dataset Creation: Fri May 03 19:44:00 2013

MICRO Calibration Report

Serial Number: MICRO4
 Tool Model: PROBE
 Performed: Tue Apr 23 16:01:43 2013

Caliper Calibration: Gain=2.725 Offset=-6.914

References	Low Cal	High Cal
Readings	8.500	14.000
	5.584	7.602

1.5" Calibration: Gain=40.000 Offset=0.000

Low Cal	High Cal
---------	----------

References	0.000	20.000
Readings	0.009	1.541

2" Calibration:	Gain=45.000	Offset=0.000
	Low Cal	High Cal
References	0.000	20.000
Readings	0.004	1.198

Gamma Ray Calibration Report

Serial Number:	GR5	
Tool Model:	OPEN	
Performed:	Fri Apr 26 22:00:59 2013	
Calibrator Value:	1.0	GAPI
Background Reading:	0.0	cps
Calibrator Reading:	1.0	cps
Sensitivity:	0.9000	GAPI/cps