



MIDWEST SURVEYS
 LOGGING - PERFORATING - CONSULTING SERVICES
 P.O. Box 68, Osawatomie, KS 66064
 913 / 755 - 2428

GAMMA RAY / NEUTRON / CCL

File No.

Company **Sirius Energy Corporation, Inc.**

Well **Rosell No. RJ-6**

Field **Bush City Shoestring**

County **Anderson** State **Kansas**

Location **2172 FSL & 4796' FEL**

Sec 4 **21e** Twp 21s Rge 21e

Permanent Datum **GL** Elevation **NA**

Log Measured From **GL** Elevation **NA**

Drilling Measured From **GL** Elevation **NA**

Date **09-20-2013**

Run Number **One**

Depth Driller **668.0**

Depth Logger **668.0**

Bottom Logged Interval **659.0**

Top Log Interval **20.0**

Fluid Level **Full**

Type Fluid **Water**

Density / Viscosity **NA**

Salinity - PPM Cl **NA**

Max Recorded Temp **NA**

Estimated Cement Top **0.0**

Equipment No **102** Location **Osawatomie**

Recorded By **Gary Windisch**

Witnessed By **Kim Somme**

BORE-HOLE RECORD		CASING RECORD		TO
NO	BIT	FROM	SIZE	WTG
One	9.875"	0.0	21.0	7.00"
Two	5.625"	21.0	696.0	2.875"
				17.0 #
				6.5 #
				0.0
				21.0
				661.0

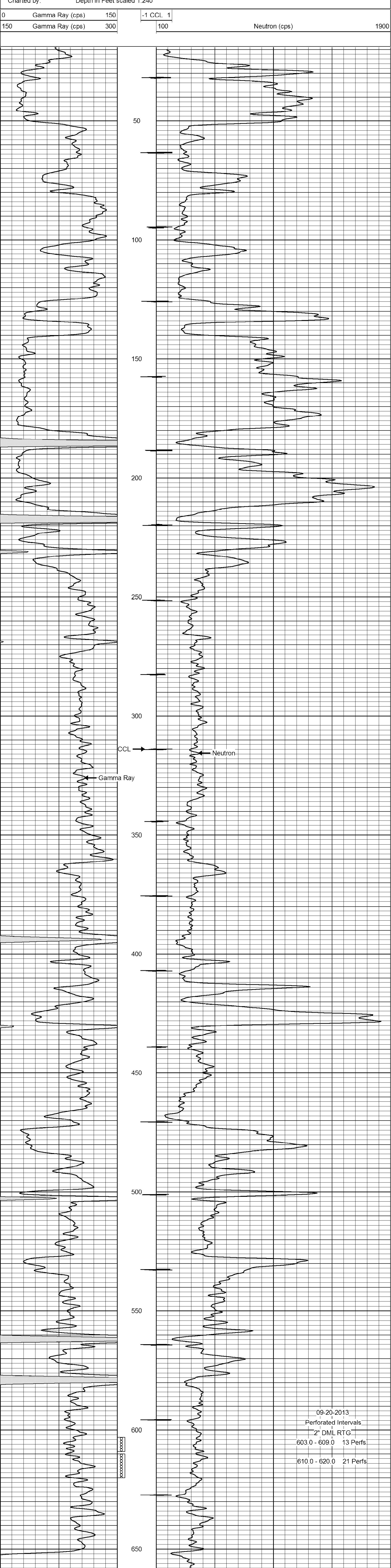
<<< Fold Here >>>

All interpretations are opinions based on inferences from electrical or other measurements and we cannot and do not guarantee the accuracy or correctness of any interpretation, and we shall not, except in the case of gross or willful negligence on our part, be liable or responsible for any loss, costs, damages, or expenses incurred or sustained by anyone resulting from any interpretation made by any of our officers, agents or employees. These interpretations are also subject to our general terms and conditions set out in our current Price Schedule.

Comments

Drilling Contractor :
 John Leis Oilfield Services

Database File: rosell6rj.db
 Dataset Pathname: pass1
 Presentation Format: gr-n-ccl
 Dataset Creation: Fri Sep 20 10:06:11 2013 by Log SCH 111116
 Charted by: Depth in Feet scaled 1:240



09-20-2013
 Perforated Intervals
 2" DML RTG
 603.0 - 609.0 13 Perfs
 610.0 - 620.0 21 Perfs