

MIDWEST SURVEYS
 LOGGING - PERFORATING - CONSULTING SERVICES
 P.O. Box 68, Osawatomie, KS 66064
 913.755.2128

GAMMA RAY / NEUTRON / CCL

File No. _____

Company **SCZ Resources, LLC.**

Well **Kendall Dice No. D-2**

Field **Humbolt - Chanute**

County **Allen** State **Kansas**

Location **825 FSL & 2475 FWL**

SE-NE-SE-SW

Sec. 22 Twp. 26S Rge. 18E

Permittent Datum Log Measured From Drilling Measured From

Date 10-03-2013

Run Number One

Depth Driller 900.0

Bottom Logged Interval 878.5

Top Log Interval 877.5

Fluid Level 20.0

Fluid Level Full

Type Fluid Water

Density / Viscosity NA

Salinity - PPM Cl NA

Max Recorded Temp NA

Estimated Cement Top 0.0

Equipment No. Location 102 Osawatomie

Recorded By Gary Windisch

Witnessed By Scott Biel

BORE-HOLE RECORD			
NO.	BIT	TO	FROM
One	9.875"	20.0	7.00"
Two	5.875"	20.0	2.875"

CASING RECORD			
NO.	BIT	TO	FROM
One	9.875"	20.0	7.00"
Two	5.875"	20.0	2.875"

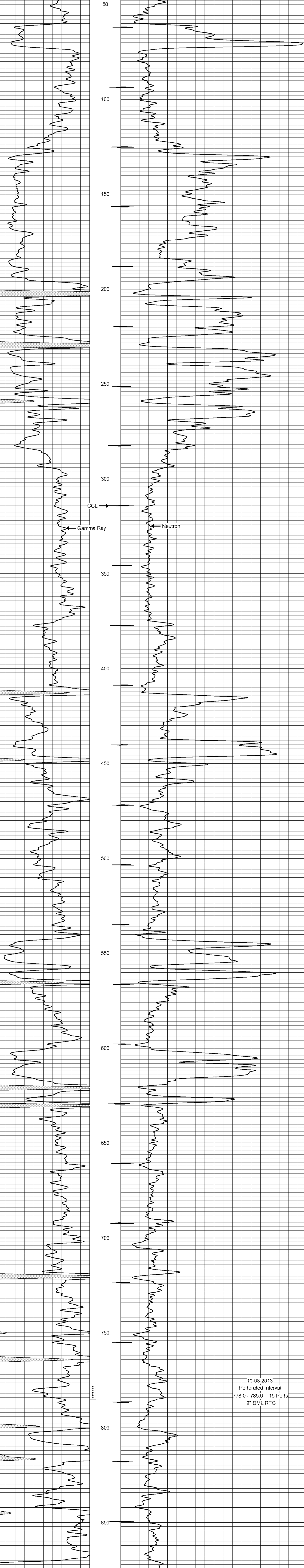
<<< Fold Here >>>

All interpretations are opinions based on inferences from electrical or other measurements and we cannot and do not guarantee the accuracy or correctness of any interpretation, and we shall not, except in the case of gross or willful negligence on our part, be liable or responsible for any loss, costs, damages, or expenses incurred or sustained by anyone resulting from any interpretation made by any of our officers, agents or employees. These interpretations are also subject to our general terms and conditions set out in our current Price Schedule.

Comments

Drilling Contractor : JTC Oil, Inc.

Database File: dice2d.db
 Dataset Pathname: pass1
 Presentation Format: gr-n-ccl
 Dataset Creation: Thu Oct 03 09:05:52 2013 by Log SCH 111116
 Charted by: Depth in Feet scaled 1:240



10-08-2013
 Perforated Interval
 778.0 - 785.0 15 Perfs.
 2" DML RTG

0 Gamma Ray (cps) 150
 150 Gamma Ray (cps) 300
 -1 CCL 1
 100 Neutron (cps) 1900