

MIDWEST SURVEYS
 LOGGING - PERFORATING - CONSULTING SERVICES
 P.O. Box 68, Osawatomie, KS 66064
 913.755.2128

GAMMA RAY / NEUTRON / CCL

File No. _____

Company **SCZ Resources, LLC.**

Well **Kendall Dice No. D-1**

Field **Humbolt - Chanute**

County **Allen** State **Kansas**

Location **1100' FSL & 2400' FWL**

Other Services **Perforate**

Sec. **22** Twp. **26S** Rge. **18E**
 NENE-SE-SW

Perforant Datum **GL** Elevation **NA** Elevation **KB NA**
 Log Measured From **GL** D.F. **NA**
 Drilling Measured From **GL** G.L. **NA**

Date **10-03-2013**

Run Number **One**

Depth Driller **900.0**

Depth Logger **880.0**

Bottom Logged Interval **879.0**

Top Log Interval **20.0**

Fluid Level **Full**

Type Fluid		Water	
Density / Viscosity	NA	NA	NA
Salinity - PPM Cl	NA	NA	NA
Max Recorded Temp	NA	NA	NA
Estimated Cement Top	0.0	0.0	0.0
Equipment No.	102	Osawatimie	
Recorded By	Gary Windisch		
Witnessed By	Scott Biel		

BORE-HOLE RECORD			
RUN	NO.	BIT	TO
One	9.875'	FROM	20.0
Two	5.875'	FROM	20.0
		SIZE	7.00"
		WGT.	17.0#
		FROM	0.0
		TO	20.0
		FROM	0.0
		TO	886.0

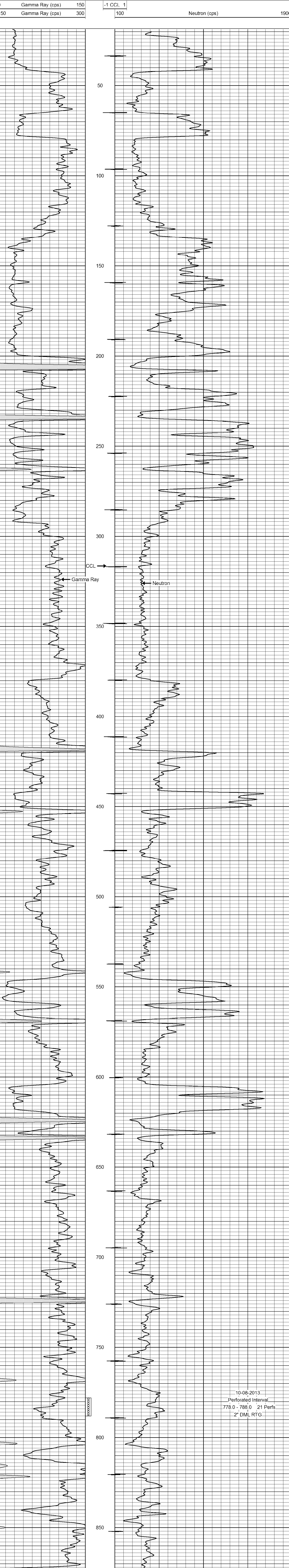
<<< Fold Here >>>

All interpretations are opinions based on inferences from electrical or other measurements and we cannot and do not guarantee the accuracy or correctness of any interpretation, and we shall not, except in the case of gross or willful negligence on our part, be liable or responsible for any loss, costs, damages, or expenses incurred or sustained by anyone resulting from any interpretation made by any of our officers, agents or employees. These interpretations are also subject to our general terms and conditions set out in our current Price Schedule.

Comments

Drilling Contractor :
JTC Oil, Inc.

Database File: dice1d.db
 Dataset Pathname: pass1
 Presentation Format: gr-n-ccl
 Dataset Creation: Thu Oct 03 09:43:12 2013 by Log SCH 1111116
 Charted by: Depth in Feet scaled 1:240



10-08-2013
 Perforated Interval
 778.0 - 788.0 21 Perfs
 2" DML RTG

0 Gamma Ray (cps) 150
 150 Gamma Ray (cps) 300
 -1 CCL 1
 100 Neutron (cps) 1900