



**GAMMA RAY
NEUTRON
COMPLETION LOG**

Company MULTIPLEX RESOURCES, INC.
Well CANNON #C-11
Field HUMBOLDT - CHANUTE
County ALLEN State KANSAS

Location: 1965' FNL & 1145' FWL
SE NE SWNW
API #: 15-001-31318-00-00
Other Services

Permanent Datum: SEC 15 TWP 26S RGE 18E Elevation 935' EST
Log Measured From: GL Elevation 935' EST
Drilling Measured From: GL Elevation 935' EST

Date: 2-12-15
Run Number: 1 NW
Depth Driller: 847'
Depth Logger: 832.6'
Top Log Interval: 200'
Bottom Logged Interval: 832.6'
Fluid Level: FULL
Type Fluid: WATER

Production Casing: 2 7/8" @ TD @
Max. Recorded Temp.: @
Estimated Cement Top: @
Calculated Cement Top: @
Amount & Type Cement: @
Drilling Contractor: @
Equipment Number: 103
Location: SLOMON, B.
Recorded By: GUILS, B.
Witnessed By:

<<< Fold Here >>>

All interpretations are opinions based on inferences from electrical or other measurements and we cannot and do not guarantee the accuracy or correctness of any interpretation, and we shall not, except in the case of gross or willful negligence on our part, be liable or responsible for any loss, costs, damages, or expenses incurred or sustained by anyone resulting from any interpretation made by any of our officers, agents or employees. These interpretations are also subject to our general terms and conditions set out in our current Price Schedule.

Comments

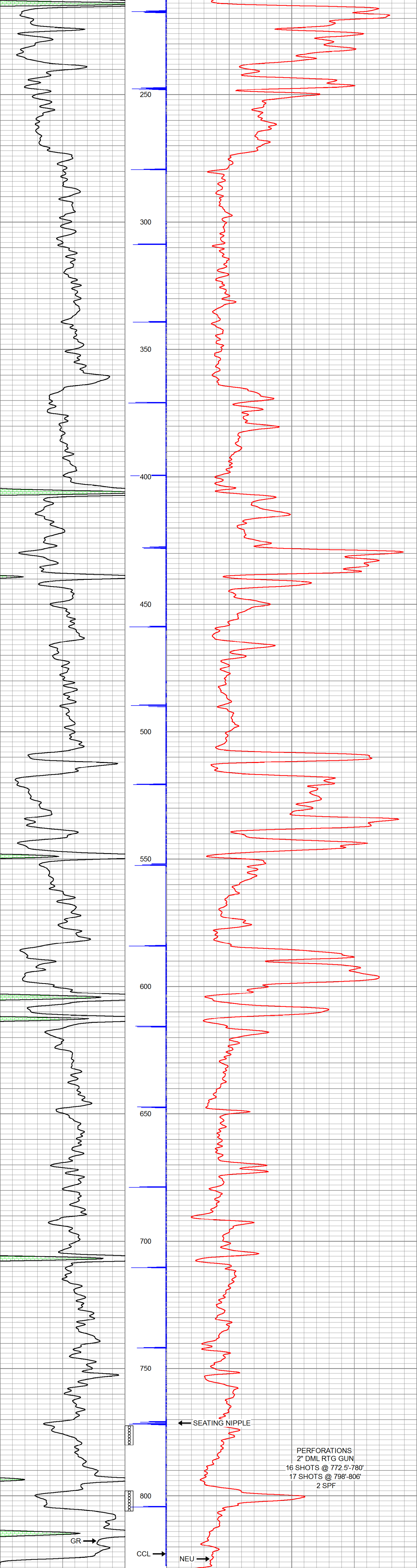
THANK YOU

Sensor	Offset (ft)	Schematic	Description	Len (ft)	OD (in)	Wt (lb)
GR	7.59		GR-TITAN_169 (TIT169_001) Titan 1 11/16" Gamma Ray	4.75	1.69	20.00
CCL	5.05		CCL-TITAN_169 (TIT169) Titan 1 11/16" Logging CCL	1.83	1.69	7.50
NEU	0.63		NEU-TITAN (TIT801) TITAN 1 11/16" Neutron	4.33	1.69	25.00

Dataset: cannon # c- 11.db: field/well/run1/pass1
Total Length: 10.92 ft
Total Weight: 52.50 lb
O.D.: 1.69 in

Database File: c:\users\julie\desktop\cannon # c- 11.db
Dataset Pathname: pass1
Presentation Format: gr-n-ccl
Dataset Creation: Thu Feb 12 12:04:45 2015 by Log Std Casedhole 09061
Charted by: Depth in Feet scaled 1:240

150	gr	300	3	CCLD.05	100	NEU (cps)	1700
0	GR	150					



150	gr	300	3	CCLD.05	100	NEU (cps)	1700
0	GR	150					



Company MULTIPLEX RESOURCES, INC.
Well CANNON #C-11
Field HUMBOLDT - CHANUTE
County ALLEN SEC. 15 TWP. 26S RGE. 18E
State KANSAS Date 2-12-15