



**MICRO  
RESISTIVITY  
LOG**

Company Castle Resources Inc. Well Sieker #1 Field Chase - Silica County Rice State Kansas	Company Castle Resources Inc. Well Sieker #1 Field Chase - Silica County Rice State Kansas
Location: 1820' FSL & 1850' FWL SEC 34 TWP 19S RGE 10W Permanent Datum Ground Level Elevation 1782' Log Measured From KB 5' AGL Drilling Measured From KB	API # : 15 159 22742 Other Services CDNL DIL Elevation K.B. 1787' D.F. 1786' G.L. 1782'
Date 6-6-13 Run Number Two Depth Driller 3380' Depth Logger 3374' Bottom Logged Interval 3372' Top Log Interval 2450' Casing Driller 8 5/8" @ 315' Casing Logger 315' Bit Size 7 7/8" Type Fluid in Hole Chemical Density / Viscosity 9.5/58 pH / Fluid Loss 8.0/10.5 Source of Sample Pit Rim @ Meas. Temp .9@65degf Rmt @ Meas. Temp .68@65degf Rmc @ Meas. Temp 1.08@65degf Source of Rmf / Rmc Calculated Rim @ BHT .52@112degf Time Circulation Stopped 2:30 a.m. Time Logger on Bottom 6:30 a.m. Maximum Recorded Temperature 112degf Equipment Number T045 Location Hays, KS. Recorded By L. Smith Witnessed By Mr. Jerry Green	

<<< Fold Here >>>

All interpretations are opinions based on inferences from electrical or other measurements and we cannot and do not guarantee the accuracy or correctness of any interpretation, and we shall not, except in the case of gross or willful negligence on our part, be liable or responsible for any loss, costs, damages, or expenses incurred or sustained by anyone resulting from any interpretation made by any of our officers, agents or employees. These interpretations are also subject to our general terms and conditions set out in our current Price Schedule.

**Comments**

Thanks for using Gemini Wireline LLC Hays, KS. (785-625-1182)

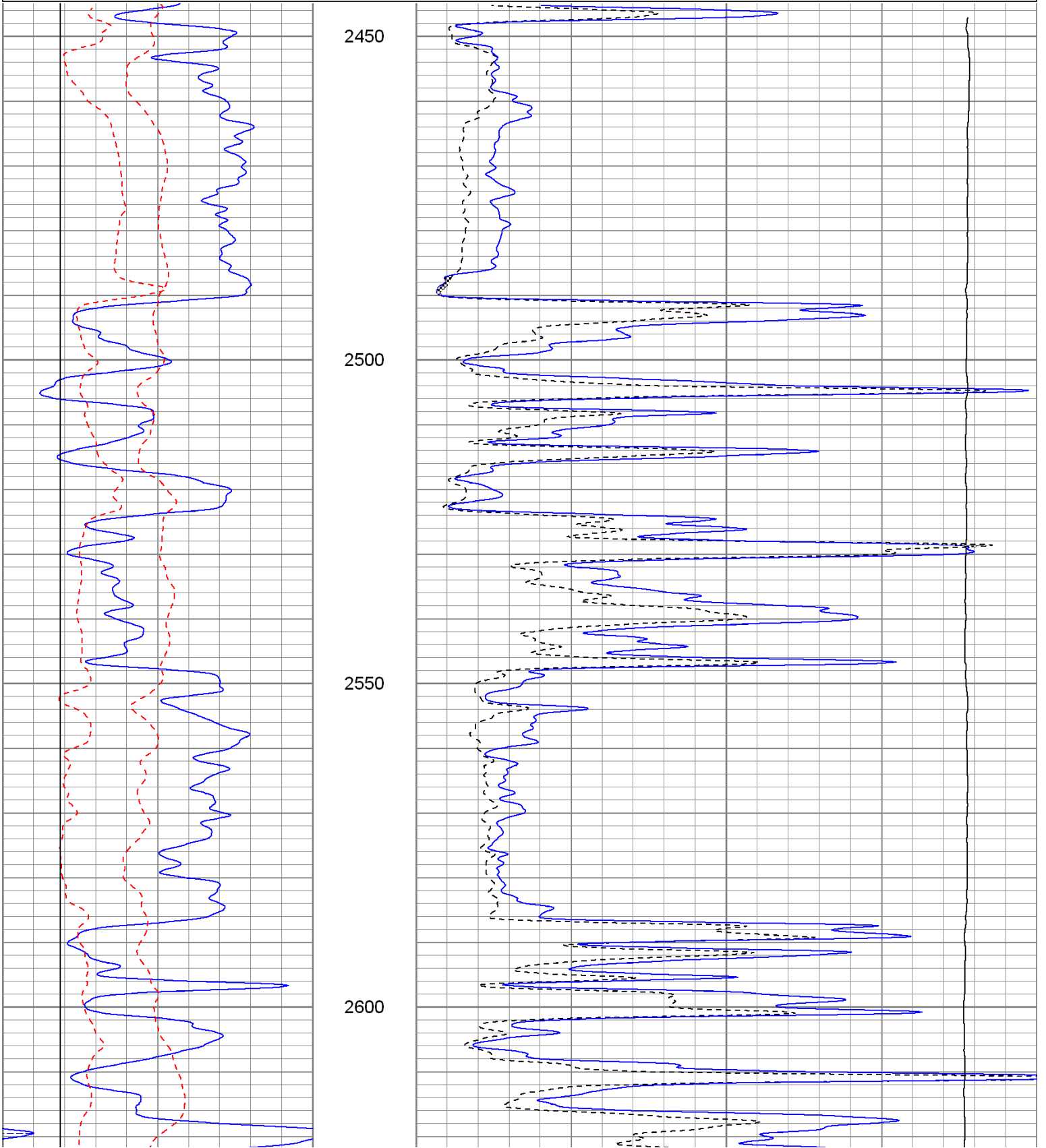


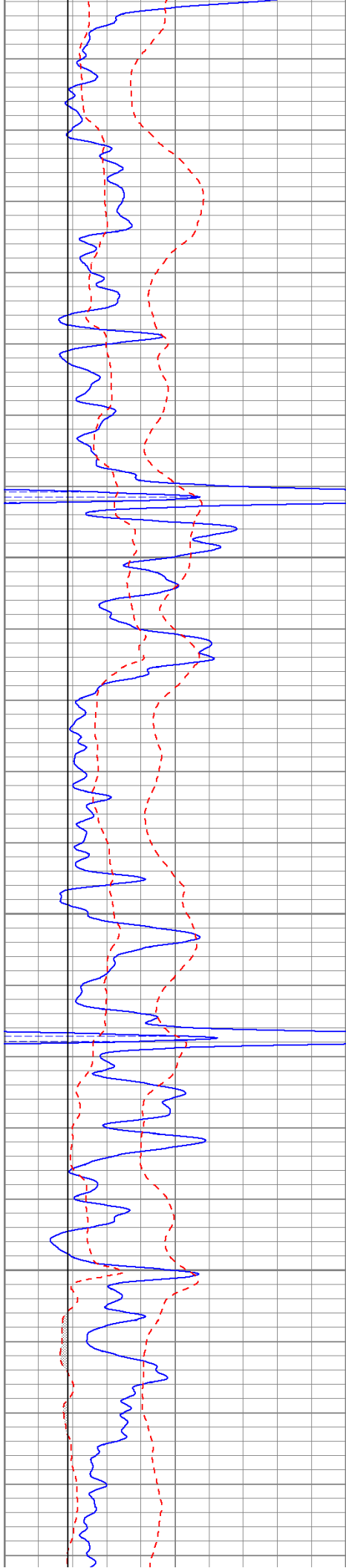
**Main Pass**

Database File: crsieker#1oh.db  
 Dataset Pathname: pass4  
 Presentation Format: kml  
 Dataset Creation: Thu Jun 06 06:50:22 2013 by Log Open-Cased 100827  
 Charted by: Depth in Feet scaled 1:240

0	GR (GAPI)	150
6	MCAL (in)	16
6	BOREID (in)	16
-100	SP (mV)	100

0	MN 2" (Ohm-m)	20
0	MI 1" (Ohm-m)	20
10000	LTEN (lb)	0



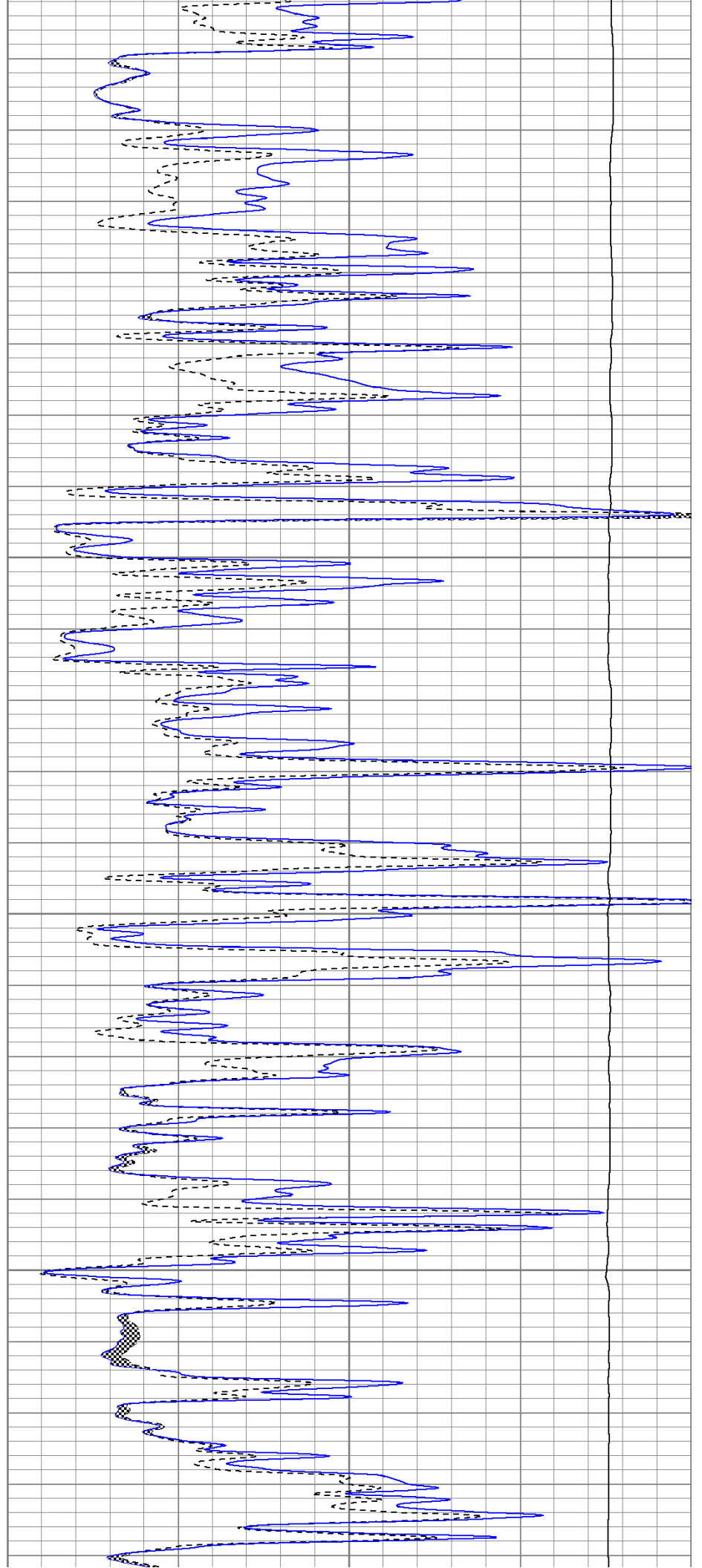


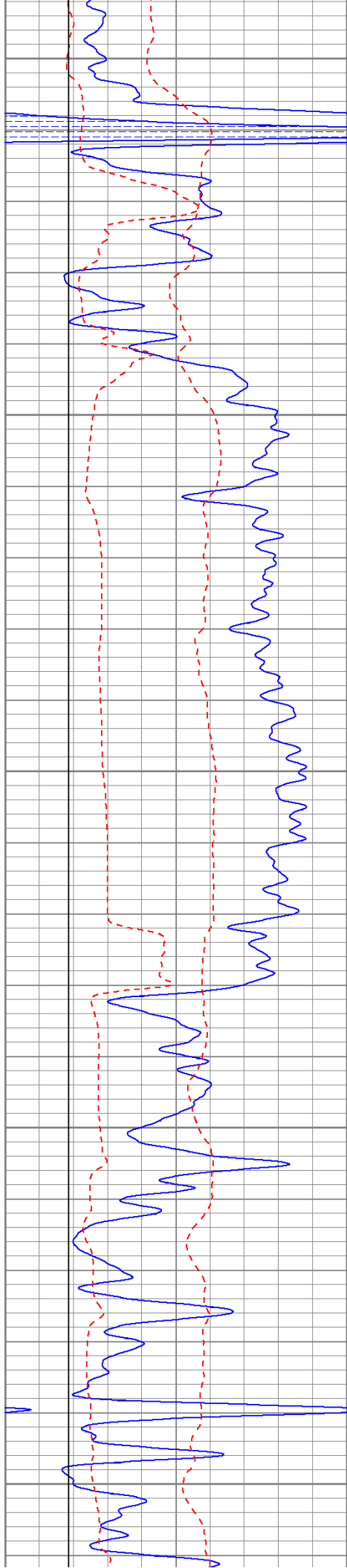
2650

2700

2750

2800





2850

2900

2950

3000

3050

