



WIRELINE SERVICES, INC.
CHANUTE, KANSAS

**GAMMA RAY
NEUTRON
COMPLETION LOG**

Company MULTIPLEX RESOURCES, INC.
Well CANNON #C I-4
Field HUMBOLDT - CHANUTE
County ALLEN
State KANSAS

Company MULTIPLEX RESOURCES, INC.
Well CANNON #C I-4
Field HUMBOLDT - CHANUTE
County ALLEN State KANSAS

Location: API # : 15-001-31280-00-00 Other Services
2125' FNL & 665' FWL
NW SE SW NW
SEC 15 TWP 26S RGE 18E
Permanent Datum GL Elevation 935' EST. K.B.
Log Measured From GL D.F.
Drilling Measured From GL Elevation 935' EST. G.L.

Date	11-17-14		
Run Number	1 NW		
Depth Driller	825'		
Depth Logger	812.9'		
Top Log Interval	122'		
Bottom Logged Interval	812.9'		
Fluid Level	FULL		
Type Fluid	WATER		
Production Casing	2 7/8" @ TD	@	@
Max. Recorded Temp.			
Estimated Cement Top			
Calculated Cement Top			
Amount & Type Cement			
Amount & Type Admix			
Drilling Contractor			
Equipment Number	103		
Location			
Recorded By	SOLOMON, B.		
Witnessed By	GUILES, B.		

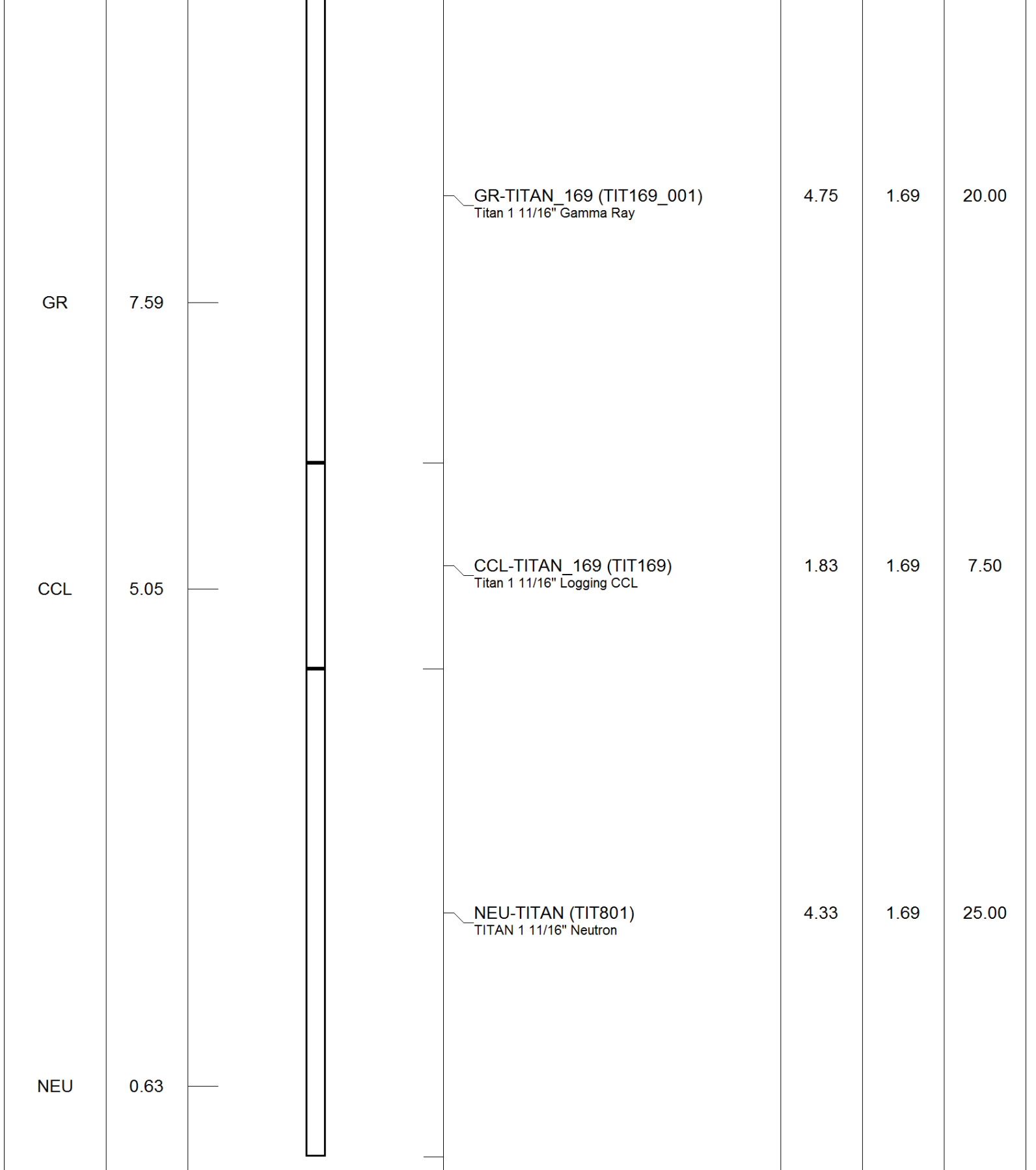
<<< Fold Here >>>

All interpretations are opinions based on inferences from electrical or other measurements and we cannot and do not guarantee the accuracy or correctness of any interpretation, and we shall not, except in the case of gross or willful negligence on our part, be liable or responsible for any loss, costs, damages, or expenses incurred or sustained by anyone resulting from any interpretation made by any of our officers, agents or employees. These interpretations are also subject to our general terms and conditions set out in our current Price Schedule.

Comments

THANK YOU.

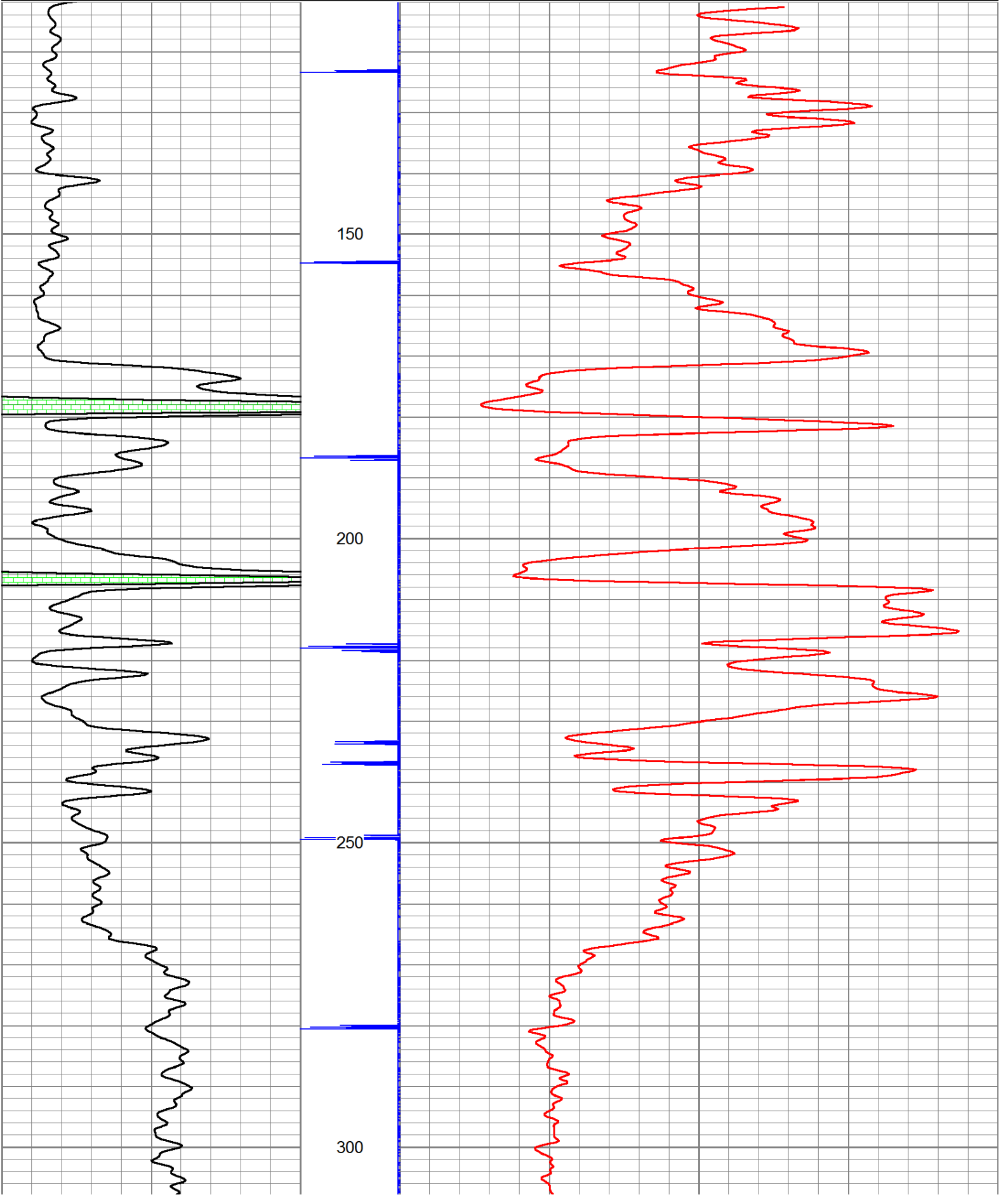
Sensor	Offset (ft)	Schematic	Description	Len (ft)	OD (in)	Wt (lb)

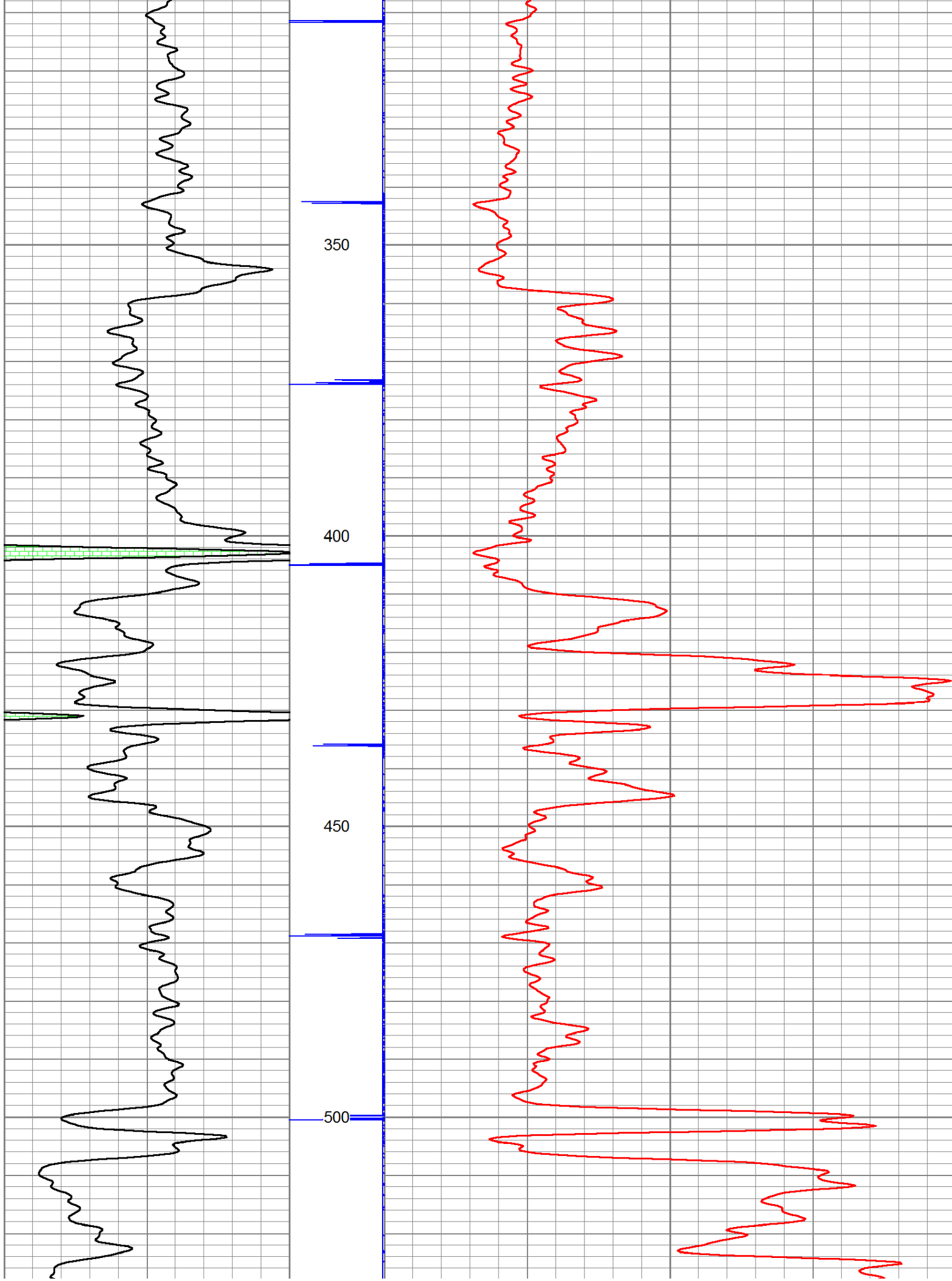


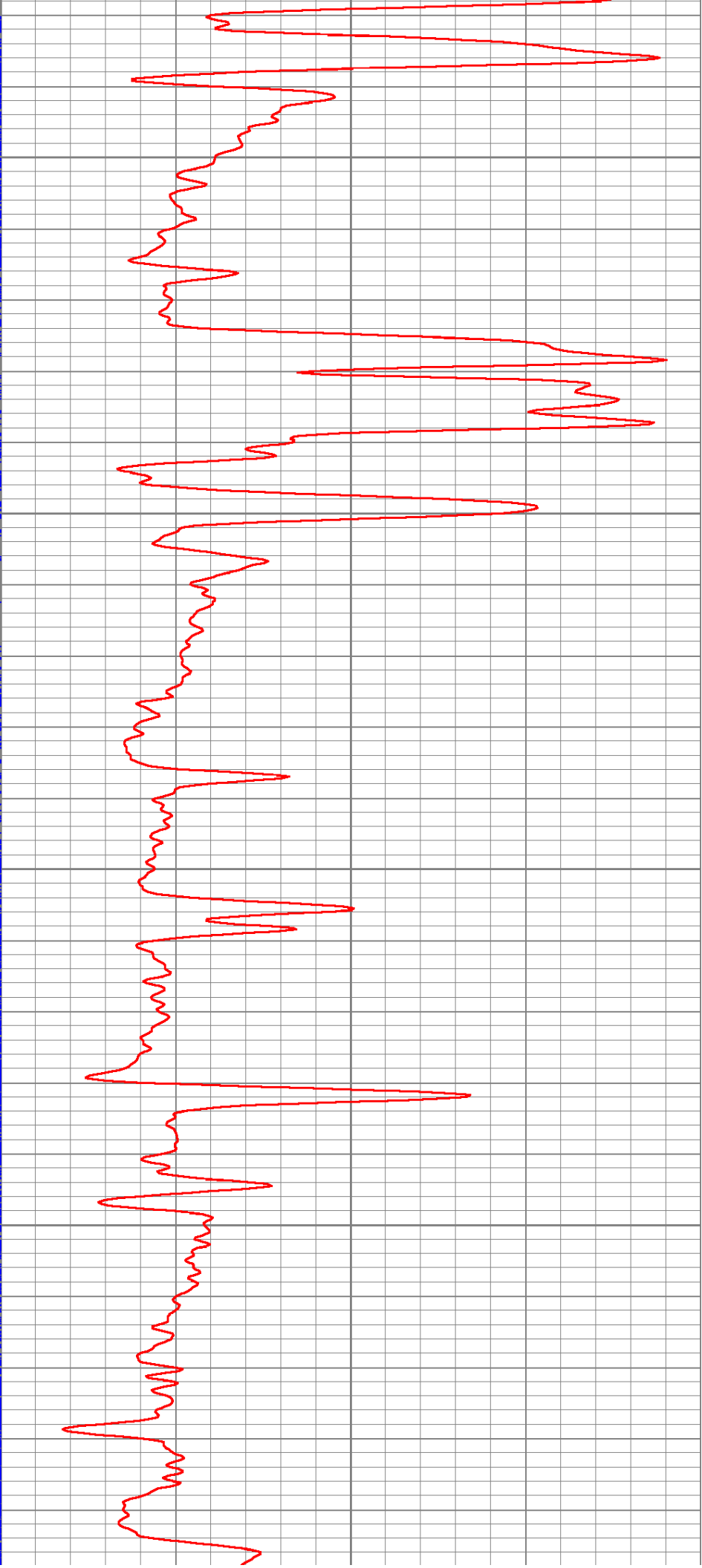
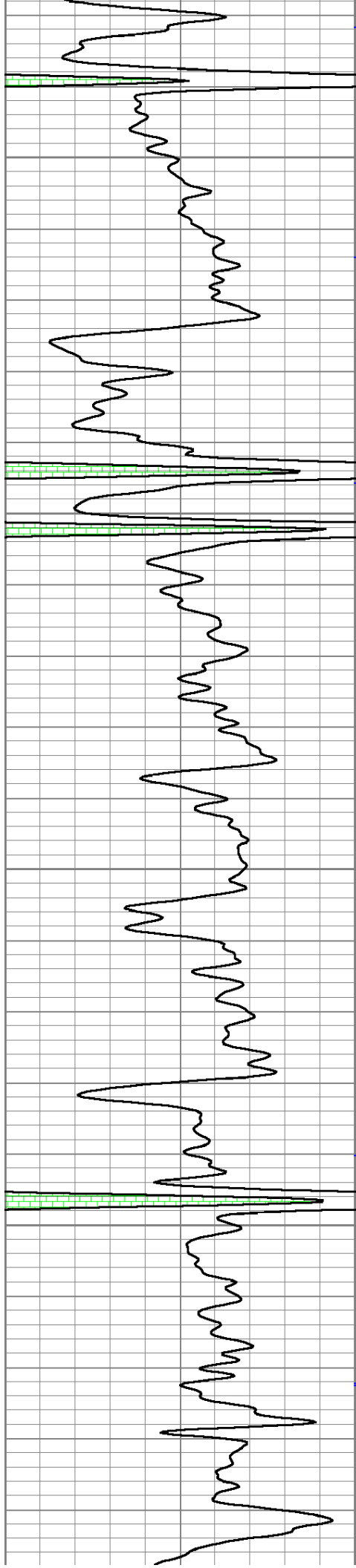
Dataset: cannon # c i-4.db: field/well/run1/pass1
 Total Length: 10.92 ft
 Total Weight: 52.50 lb
 O.D.: 1.69 in

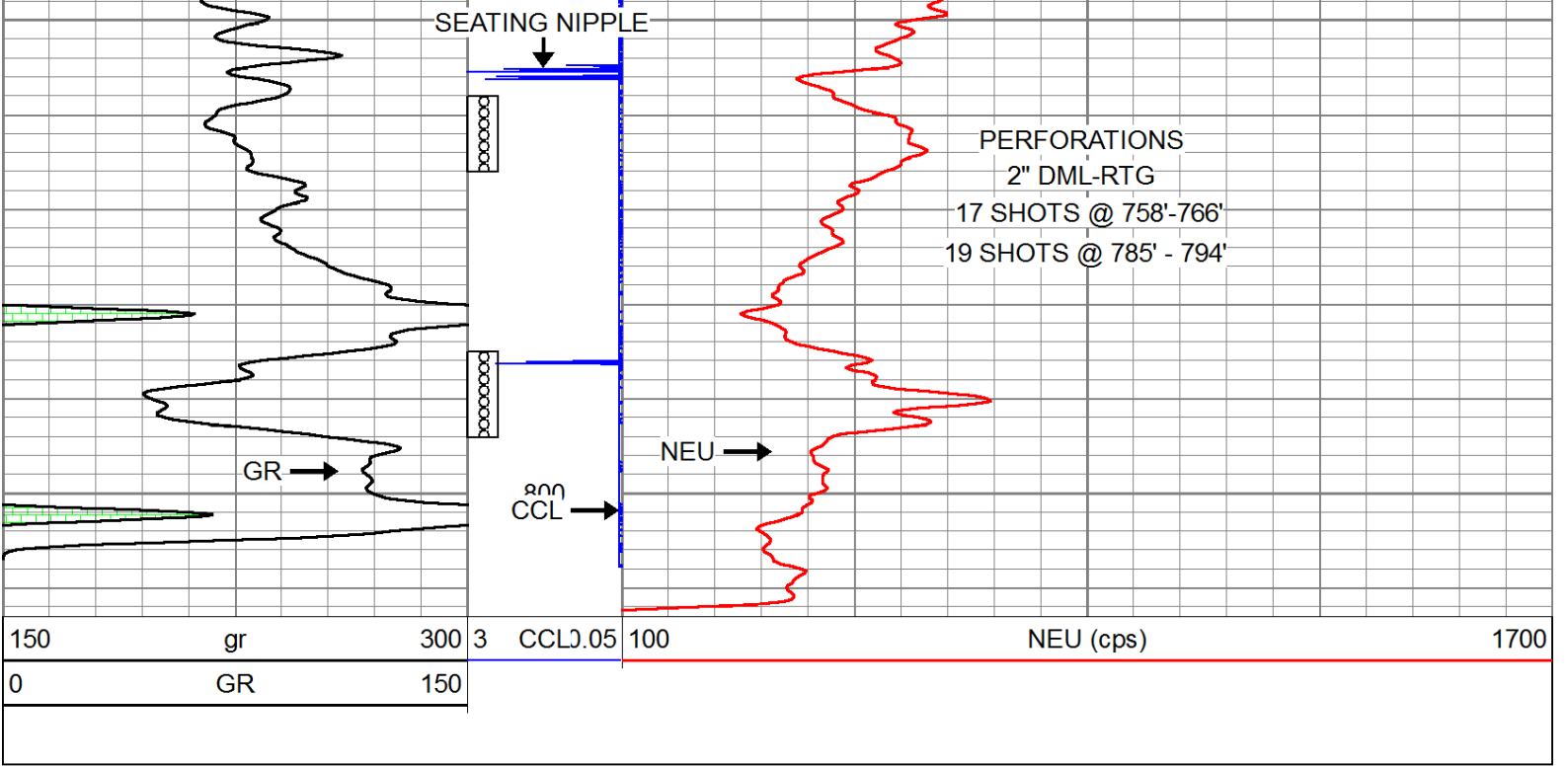
Database File: e:\cannon # c i-4.db
 Dataset Pathname: pass1
 Presentation Format: gr-n-ccl

150	gr	300	3	CCLJ.05	100	NEU (cps)	1700
0	GR	150					









Company	MULTIPLEX RESOURCES, INC.
Well	CANNON #C I-4
Field	HUMBOLDT - CHANUTE
County	ALLEN SEC. 15 TWP. 26S RGE. 18E
State	KANSAS
Date	11-17-14