



**COMPLETION
& PRODUCTION
SERVICES CO.**

**MICRO
LOG**

Company MUSTANG ENERGY CORPORATION
Well HERRMAN #1-8
Field
County RUSH
State KANSAS

Company MUSTANG ENERGY CORPORATION
Well HERRMAN #1-8
Field
County RUSH State KANSAS

Location: API # : 15-165-22010-0000
1175' FNL & 930' FEL
SEC 8 TWP 16S RGE 18W
Permanent Datum GROUND LEVEL Elevation 2009
Log Measured From KELLY BUSHING 8' A.G.L.
Drilling Measured From KELLY BUSHING
Other Services
CDL/CNL
DIL/SON
Elevation
K.B. 2017
D.F. 2015
G.L. 2009

Date	1/30/13		
Run Number	TWO		
Depth Driller	3690		
Depth Logger	3688		
Bottom Logged Interval	3670		
Top Log Interval	2900		
Casing Driller	8 5/8" @ 1181		
Casing Logger	1180		
Bit Size	7 7/8"		
Type Fluid in Hole	CHEMICAL MUD	CHLORIDES 4000 PPM	
Density / Viscosity	8.8/58		
pH / Fluid Loss	10.5/8.0		
Source of Sample	FLOWLINE		
Rm @ Meas. Temp	.80 @ 52F		
Rmt @ Meas. Temp	.60 @ 52F		
Rmc @ Meas. Temp	.96 @ 52F		
Source of Rmf / Rmc	MEASUREMENT		
Rm @ BHT	.36 @ 113F		
Time Circulation Stopped	2 HOURS		
Time Logger on Bottom			
Maximum Recorded Temperature	113F		
Equipment Number	4010		
Location	HAYS, KANSAS		
Recorded By	JASON CAPPELLUCCI		
Witnessed By	HERB DEINES		

<<< Fold Here >>>

All interpretations are opinions based on inferences from electrical or other measurements and we cannot and do not guarantee the accuracy or correctness of any interpretation, and we shall not, except in the case of gross or willful negligence on our part, be liable or responsible for any loss, costs, damages, or expenses incurred or sustained by anyone resulting from any interpretation made by any of our officers, agents or employees. These interpretations are also subject to our general terms and conditions set out in our current Price Schedule.

Comments

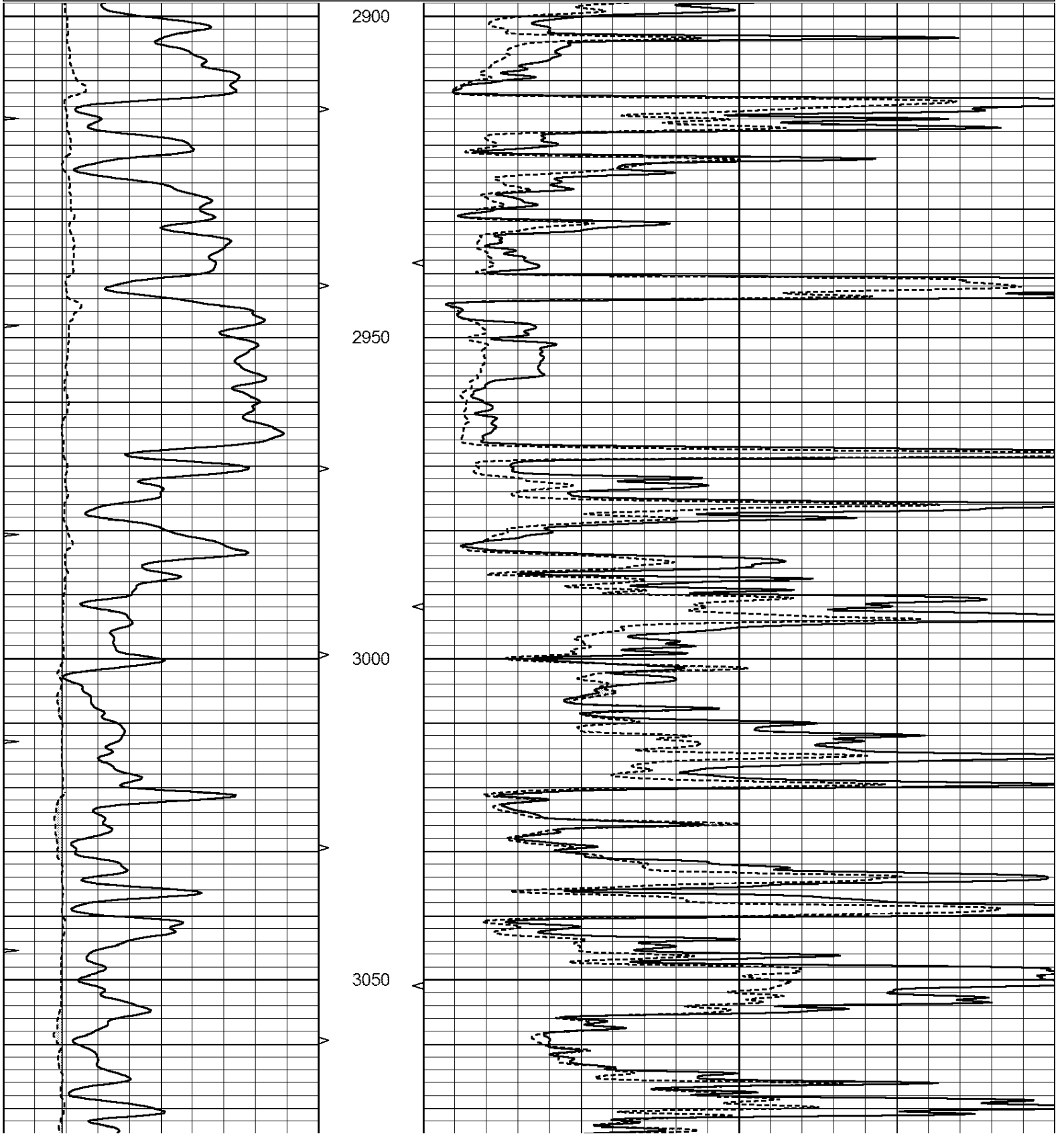
THANK YOU FOR USING NABORS HAYS, KANSAS (785) 628-6395
DIRECTIONS
SCHOENCHEN, KS. - S. TO AVE. B. - 1 W. - 1/8 S. - W. INTO

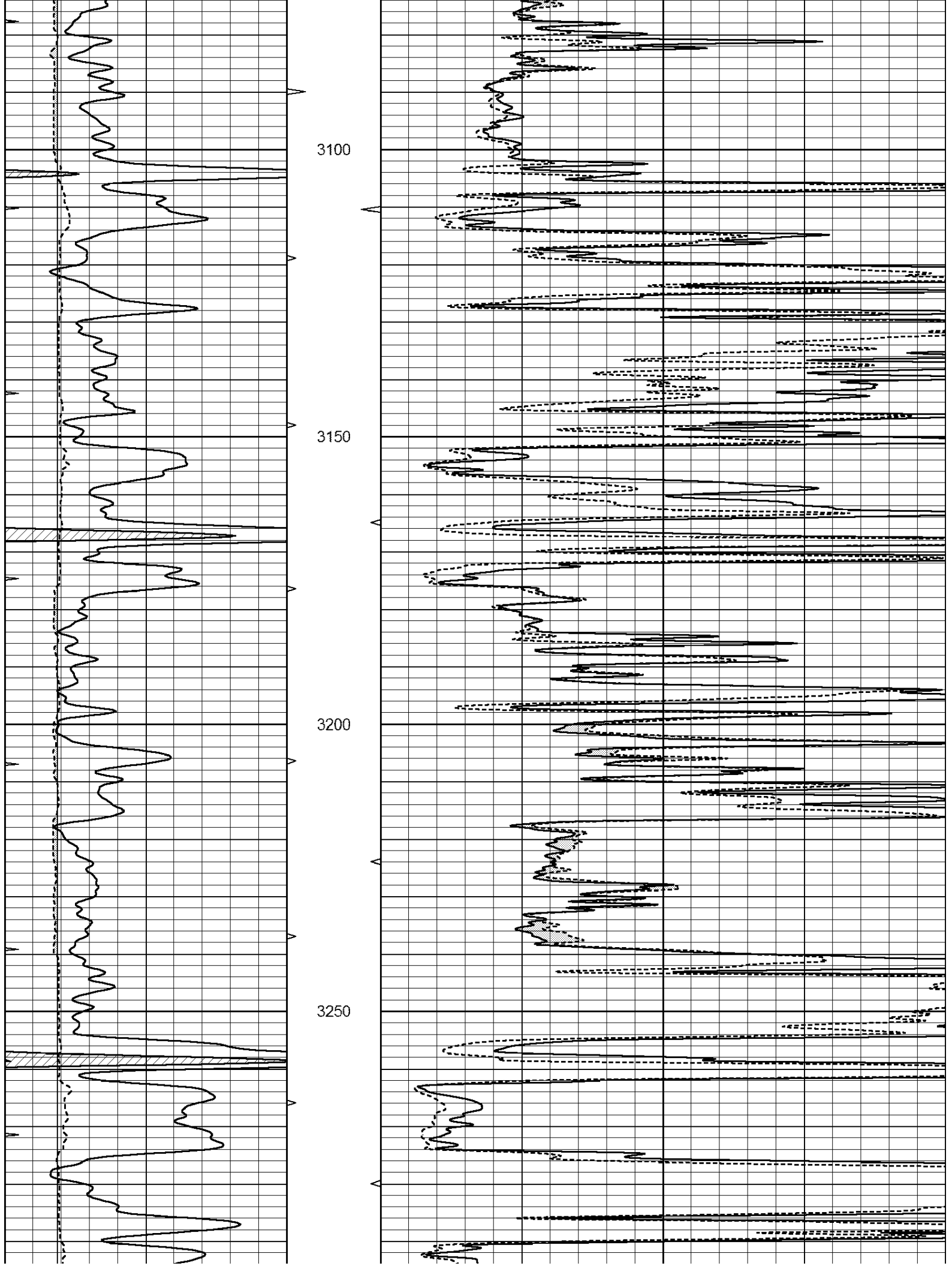


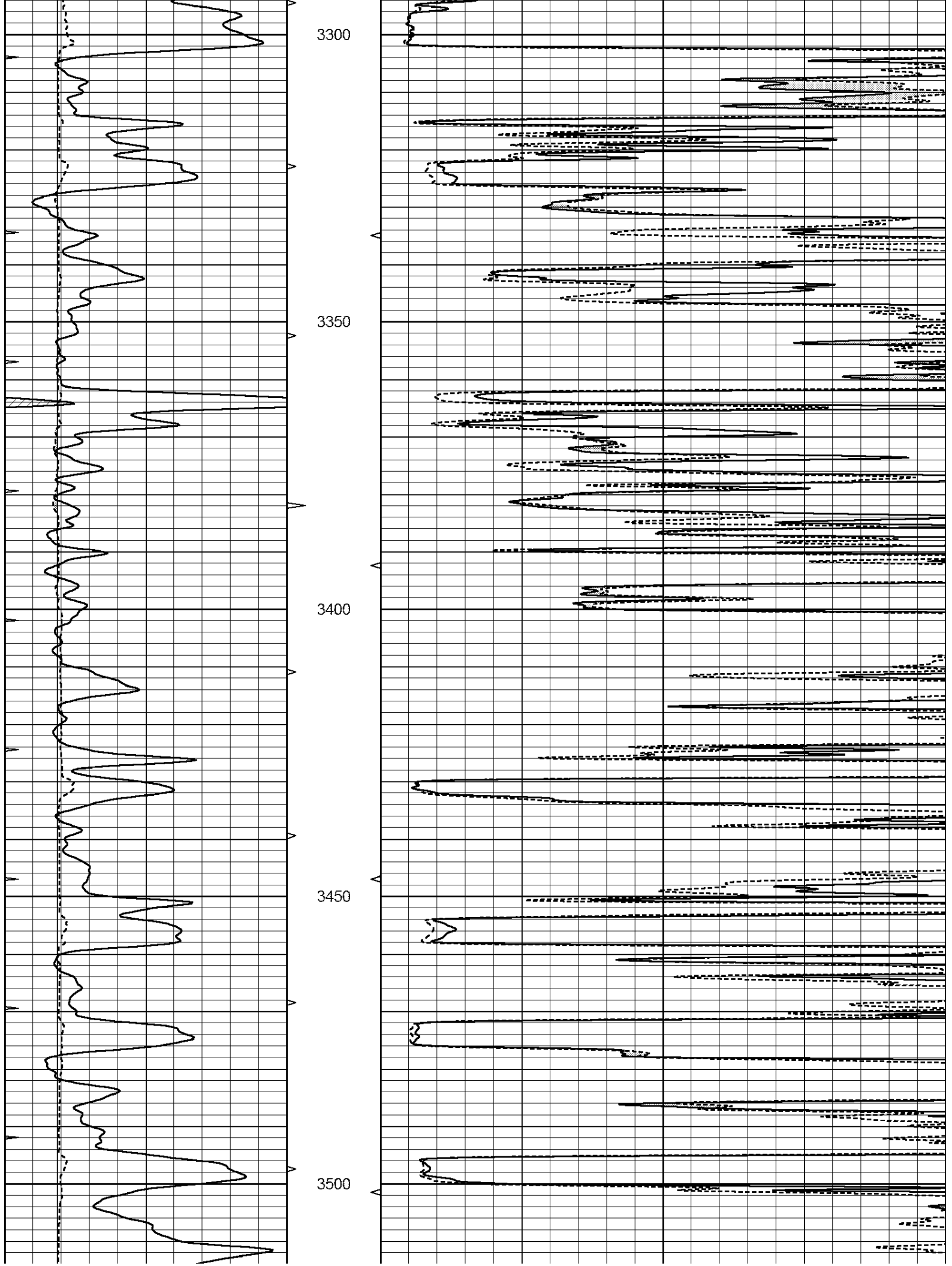
MAIN SECTION

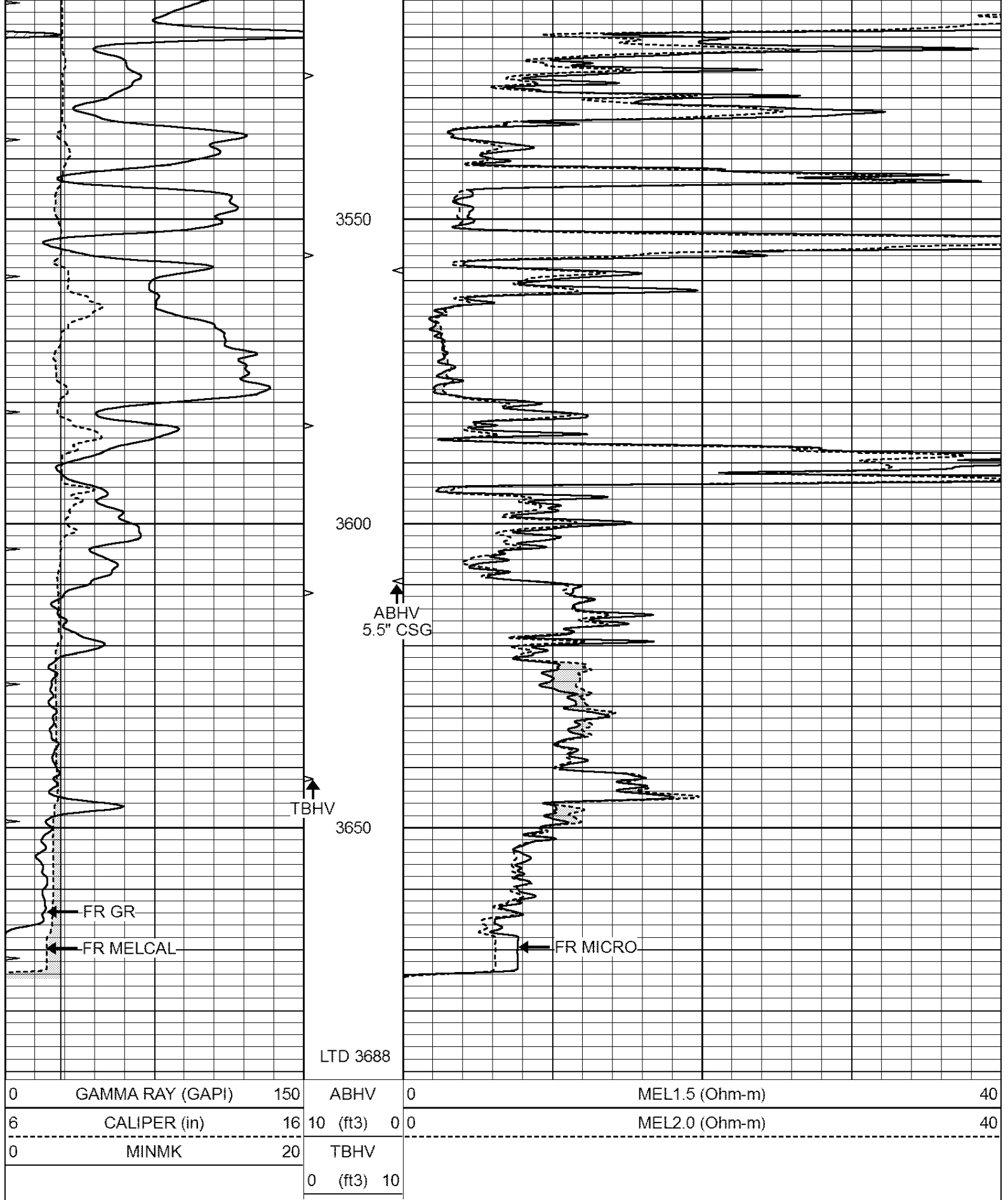
Database File: 010636ddn.db
 Dataset Pathname: pass6.1
 Presentation Format: _micro
 Dataset Creation: Wed Jan 30 12:54:00 2013 by Calc Open-Cased 090629
 Charted by: Depth in Feet scaled 1:240

0	GAMMA RAY (GAPI)	150	ABHV	0	MEL1.5 (Ohm-m)	40
6	CALIPER (in)	16	10 (ft3)	0	MEL2.0 (Ohm-m)	40
0	MINMK	20	TBHV			
			0 (ft3)	10		





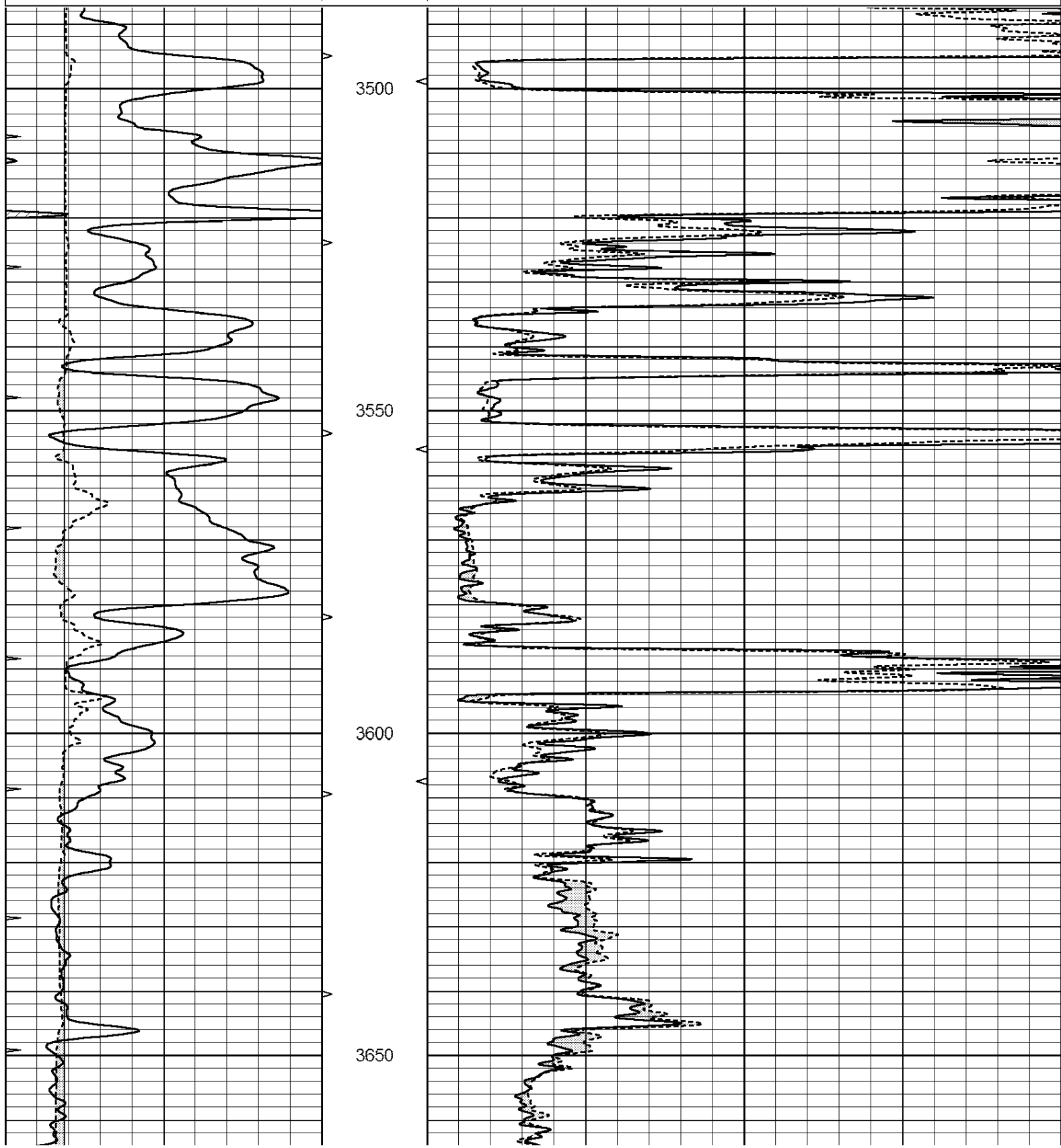




 NABORS COMPLETION & PRODUCTION SERVICES CO.	<h1>REPEAT SECTION</h1>	
--	-------------------------	--

Database File: 010636ddn.db
 Dataset Pathname: pass5.1
 Presentation Format: _micro
 Dataset Creation: Wed Jan 30 12:45:08 2013 by Calc Open-Cased 090629
 Charted by: Depth in Feet scaled 1:240

0	GAMMA RAY (GAPI)	150	ABHV	0	MEL1.5 (Ohm-m)	40
6	CALIPER (in)	16	10 (ft3)	0	MEL2.0 (Ohm-m)	40
0	MINMK	20	TBHV			
			0 (ft3)	10		



0	GAMMA RAY (GAPI)	150	ABHV	0	MEL1.5 (Ohm-m)	40
6	CALIPER (in)	16	10 (ft3) 0	0	MEL2.0 (Ohm-m)	40
0	MINMK	20	TBHV			
			0 (ft3) 10			

Calibration Report

Database File: 010636ddn.db
 Dataset Pathname: pass5.1
 Dataset Creation: Wed Jan 30 12:45:08 2013 by Calc Open-Cased 090629

MICRO Calibration Report

Serial Number:	MICRO6	
Tool Model:	PROBE	
Performed:	Tue Jan 15 17:57:23 2013	
Caliper Calibration:	Gain=5.542	Offset=-1.120
References	Low Cal	High Cal
Readings	8.000	14.000
	1.431	2.513
1.5" Calibration:	Gain=45.075	Offset=-0.700
References	Low Cal	High Cal
Readings	0.000	20.000
	0.004	1.196
2" Calibration:	Gain=38.041	Offset=0.000
References	Low Cal	High Cal
Readings	0.000	20.000
	0.006	0.913

Gamma Ray Calibration Report

Serial Number:	#8	
Tool Model:	OPEN	
Performed:	Mon Jun 13 16:56:43 2011	
Calibrator Value:	150.0	GAPI
Background Reading:	0.0	cps
Calibrator Reading:	175.0	cps
Sensitivity:	0.8371	GAPI/cps