



Pioneer Energy Services

## Dual Compensated Porosity Log

API No.	15-179-21325-00-00		
Company	Culbreath Oil & Gas Co., Inc.		
Well	Mader #1-01		
Field	Wildcat		
County	Sheridan		
State	Kansas		
Location	1650' FNL & 2310' FWL		
Sec: 1	Tw: 10S	Rge: 26W	Other Services DIL MEI/BHCS
Permanent Datum	Ground Level	Elevation 2570	Elevation
Log Measured From	Kelly Bushing	9 Ft. Above Perm. Datum	K.B. 2579
Drilling Measured From	Kelly Bushing		D.F. G.L. 2570

Date	2/13/2013		
Run Number	One		
Type Log	CNL / CDL		
Depth Driller	4120		
Depth Logger	4122		
Bottom Logged Interval	4101		
Top Logged Interval	3500		
Type Fluid In Hole	Chemical		
Salinity, PPM CL	1000		
Density	9.3		
Level	Full		
Max. Rec. Temp. F	119		
Operating Rig Time	5 Hours		
Equipment -- Location	91 Hays		
Recorded By	D. Schmidt		
Witnessed By	Steve Murphy		

Borehole Record				Casing Record			
Run No.	Bit	From	To	Size	Wgt.	From	To
One	12.25	00	261	8.625	23#	00	261
Two	7.875	261	TD				

<<< Fold Here >>>

All interpretations are opinions based on inferences from electrical or other measurements and we cannot and do not guarantee the accuracy or correctness of any interpretation, and we shall not, except in the case of gross or willful negligence on our part, be liable or responsible for any loss, costs, damages, or expenses incurred or sustained by anyone resulting from any interpretation made by any of our officers, agents or employees. These interpretations are also subject to our general terms and conditions set out in our current Price Schedule.

### Comments

Thank you for using Log-Tech, Inc.  
(785) 625-3858

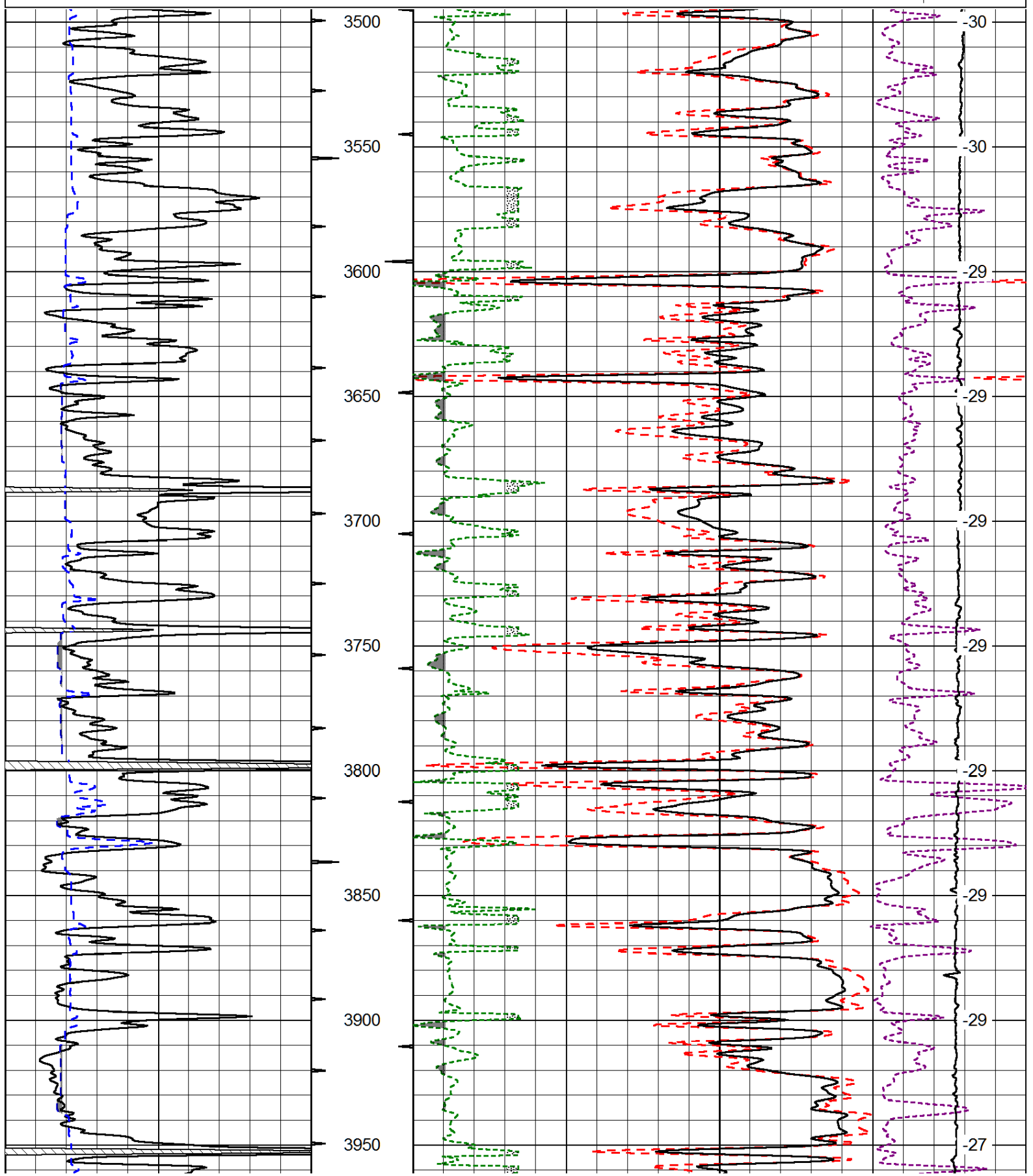
Quinter,  
2 North to B Rd, 3 East to 78 Rd, 9 North, 1/2 East,  
South into

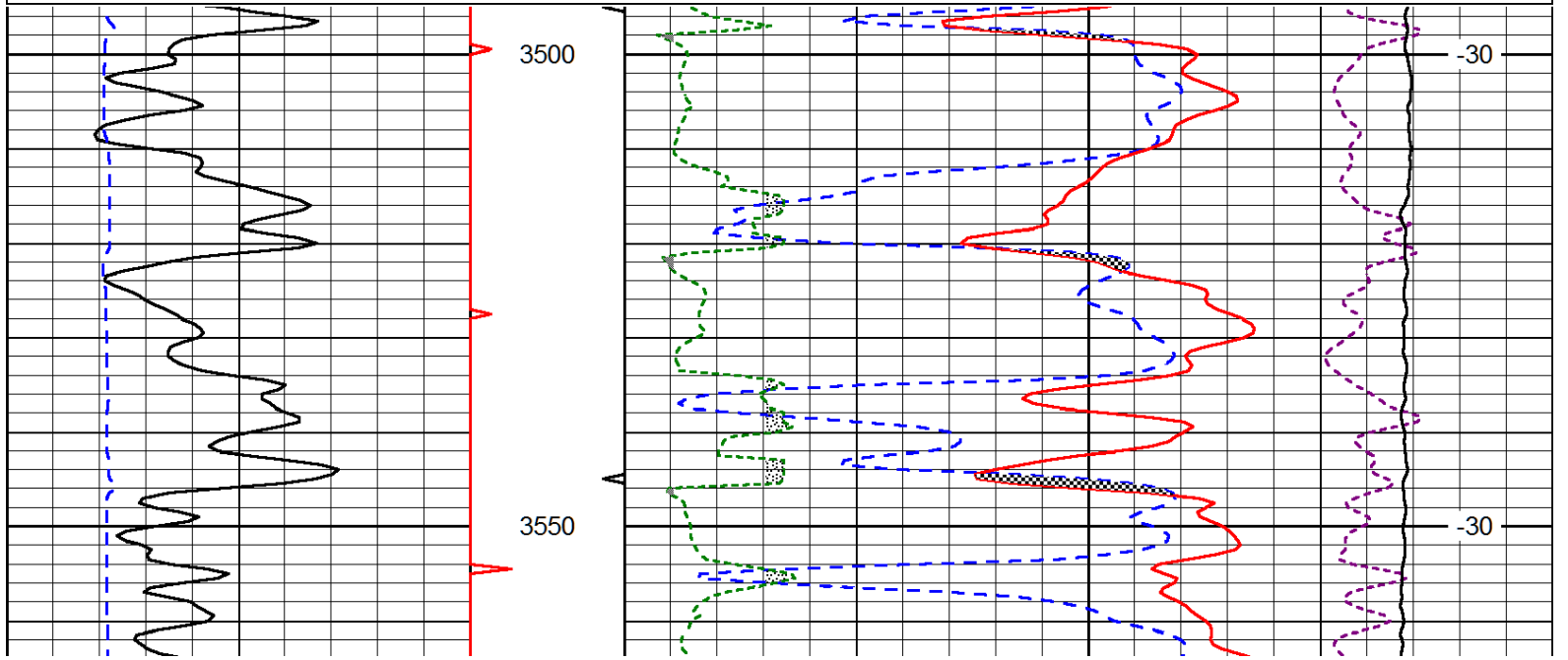
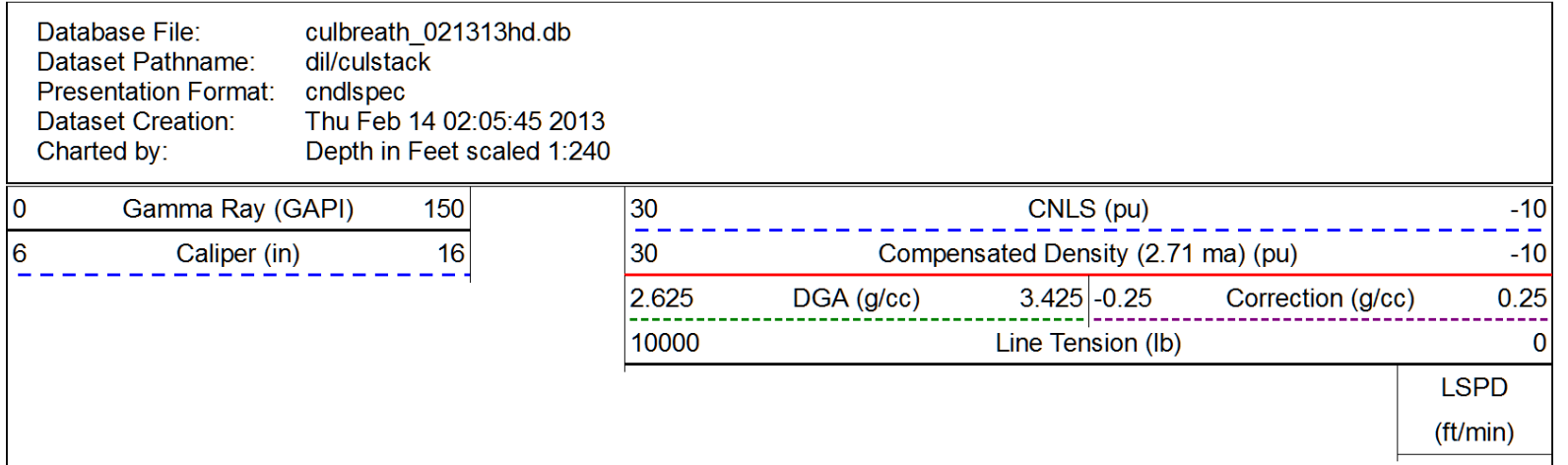
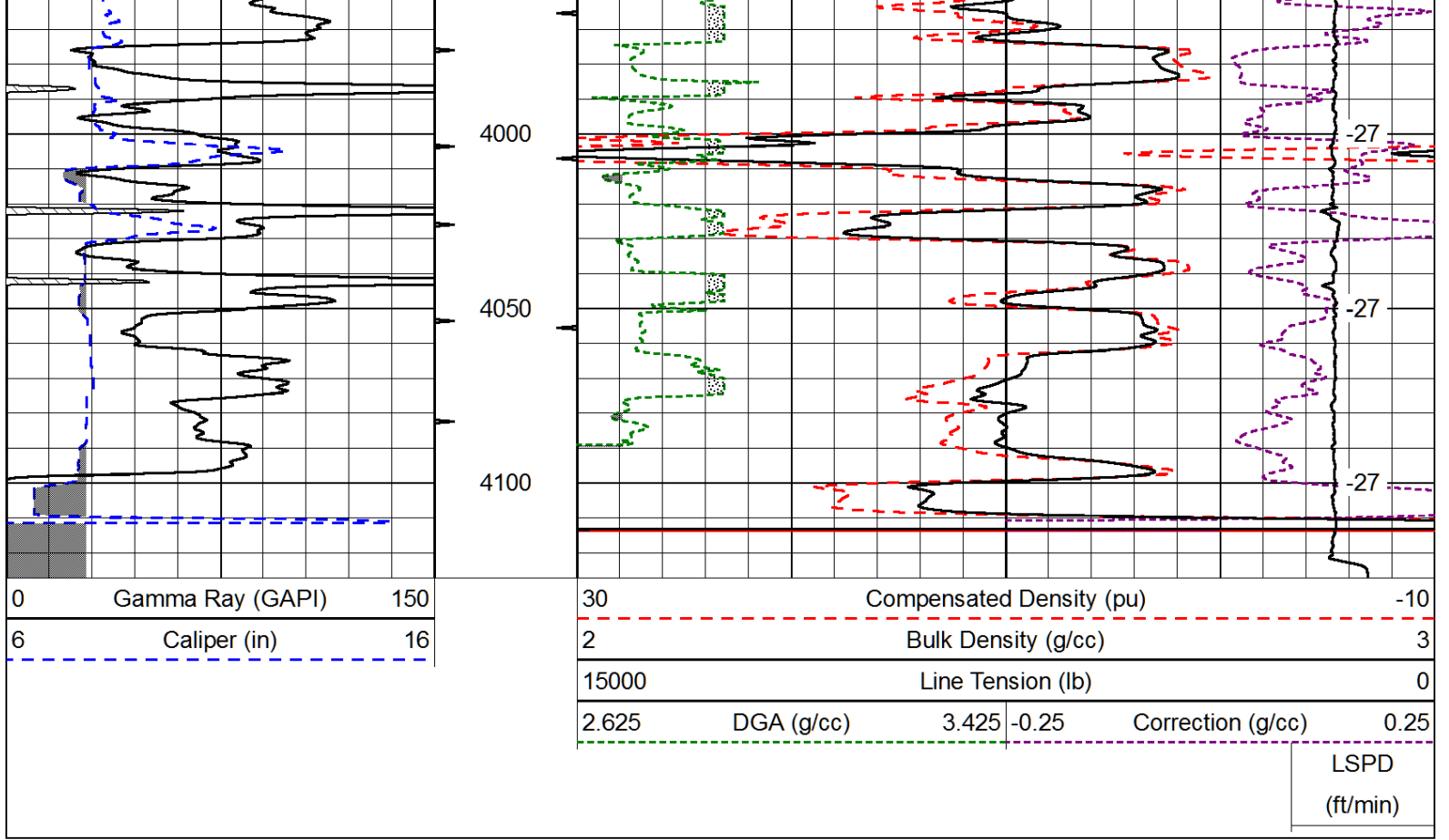
Database File: culbreath\_021313hd.db  
 Dataset Pathname: dil/culstack  
 Presentation Format: cdl  
 Dataset Creation: Thu Feb 14 02:05:45 2013  
 Charted by: Depth in Feet scaled 1:600

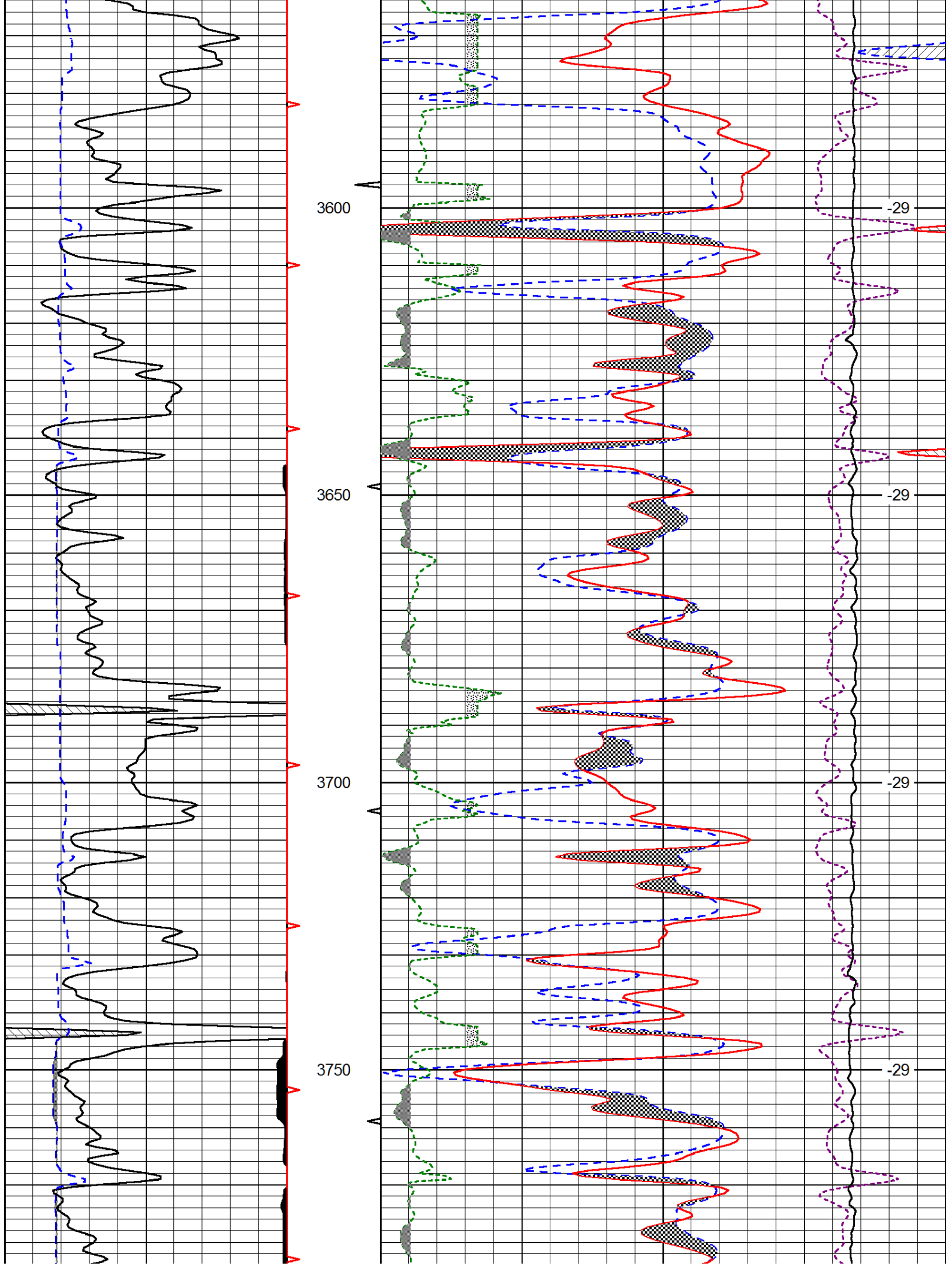
0	Gamma Ray (GAPI)	150
6	Caliper (in)	16

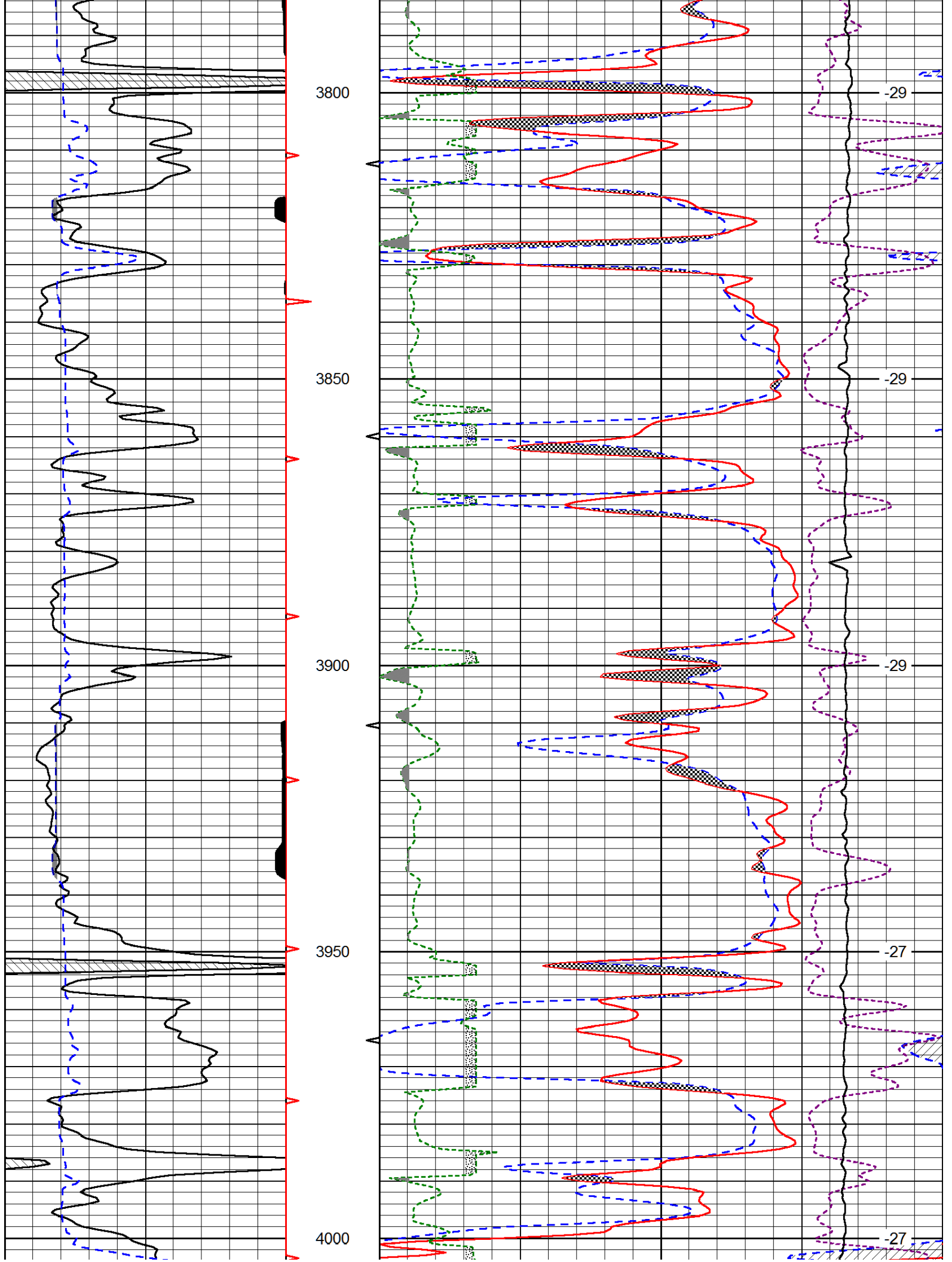
30	Compensated Density (pu)			-10	
2	Bulk Density (g/cc)			3	
15000	Line Tension (lb)			0	
2.625	DGA (g/cc)	3.425	-0.25	Correction (g/cc)	0.25

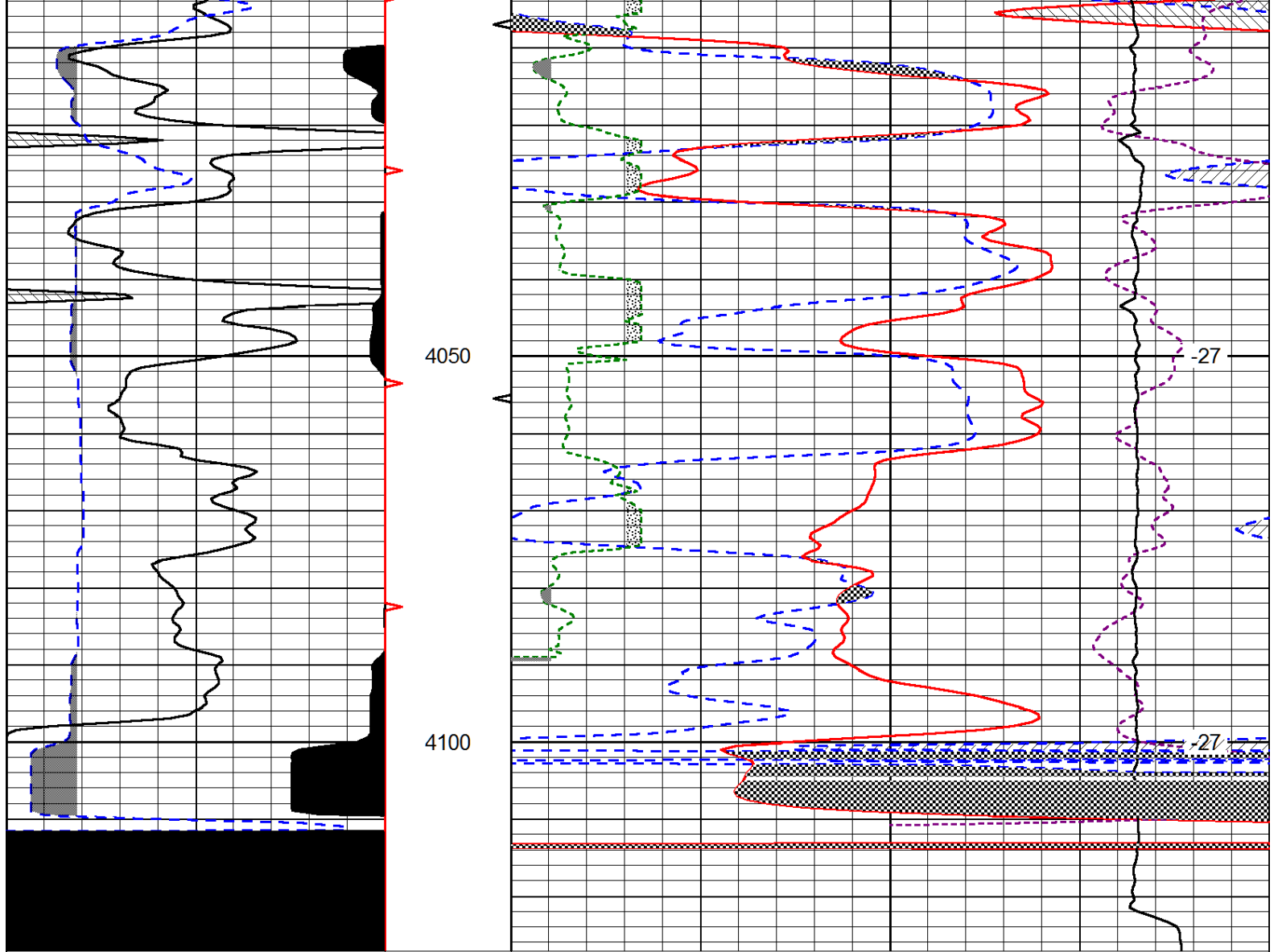
LSPD  
(ft/min)











0	Gamma Ray (GAPI)	150
6	Caliper (in)	16

30	CNLS (pu)			-10	
30	Compensated Density (2.71 ma) (pu)			-10	
2.625	DGA (g/cc)	3.425	-0.25	Correction (g/cc)	0.25
10000	Line Tension (lb)			0	

LSPD  
(ft/min)