



Pioneer Energy Services

Borehole Compensated Sonic Log

Company Culbreath Oil & Gas Co., Inc.
Well Mader #1-01
Field Wildcat
County Sheridan **State** Kansas
Location 1650' FNL & 2310' FWL
 Sec: 1 Twp: 10S Rge: 26W
 Other Services: CNL/CDL MEL/DIL

API No. 15-179-21325-00-00
 Permanent Datum Ground Level Elevation 2570
 Log Measured From Kelly Bushing 9 Ft. Above Perm. Datum
 Drilling Measured From Kelly Bushing
 Date 2/13/2013
 Elevation K.B. 2579
 D.F. 2570
 G.L. 2570

Run Number	Two
Type Log	BHC Sonic
Depth Driller	4120
Depth Logger	4122
Bottom Logged Interval	4111
Top Logged Interval	250
Type Fluid In Hole	Chemical
Salinity, PPM CL	1000
Density	9.3
Level	Full
Max. Rec. Temp. F	119
Operating Rig Time	5 Hours
Equipment -- Location	91 Hays
Recorded By	D. Schmidt
Witnessed By	Steve Murphy

Borehole Record				Casing Record			
Run No.	Bit	From	To	Size	Wgt.	From	To
One	12.25	00	261	8.625	23#	00	261
Two	7.875	261	TD				

<<< Fold Here >>>

All interpretations are opinions based on inferences from electrical or other measurements and we cannot and do not guarantee the accuracy or correctness of any interpretation, and we shall not, except in the case of gross or willful negligence on our part, be liable or responsible for any loss, costs, damages, or expenses incurred or sustained by anyone resulting from any interpretation made by any of our officers, agents or employees. These interpretations are also subject to our general terms and conditions set out in our current Price Schedule.

Comments

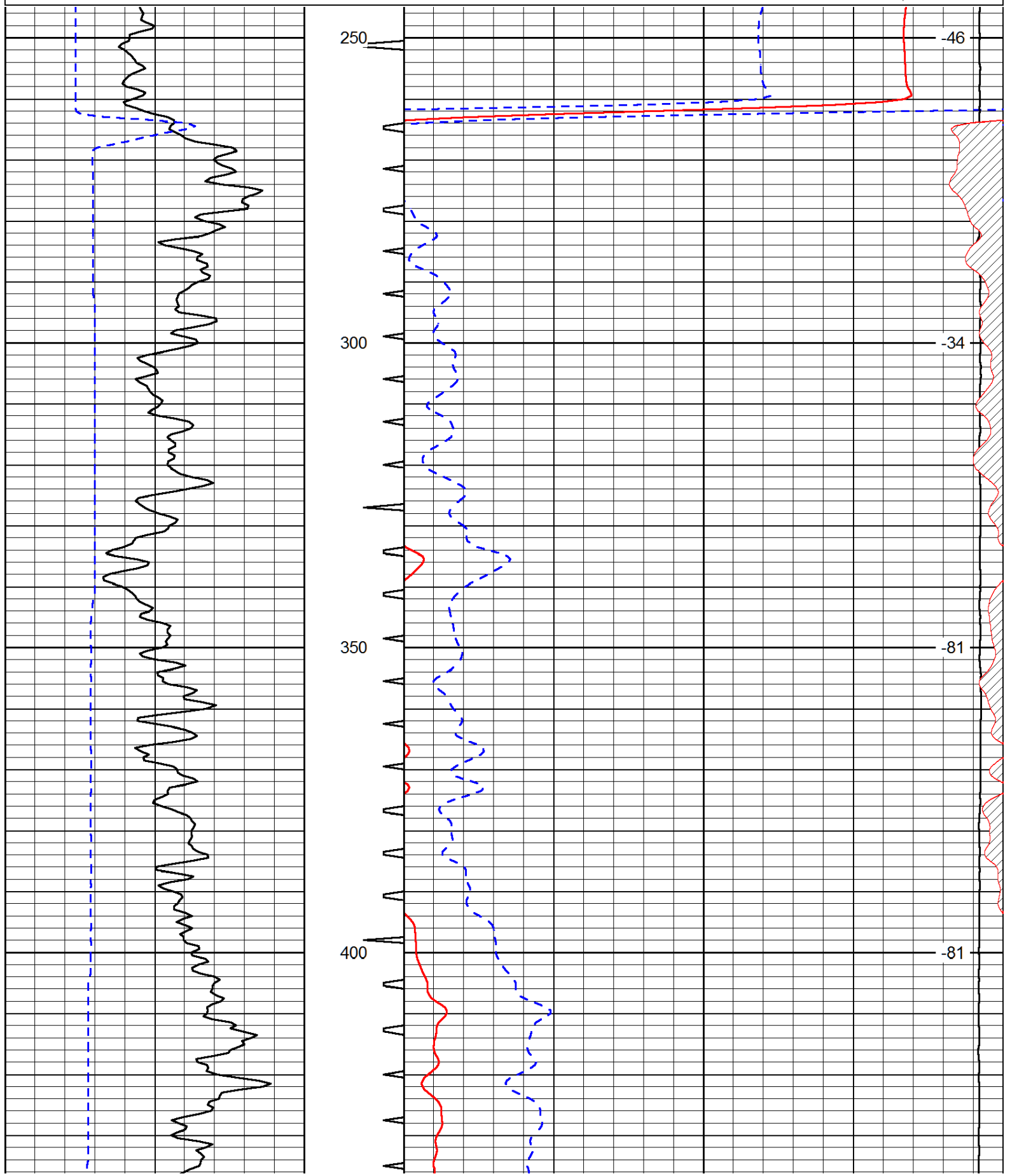
Thank you for using Log-Tech, Inc.
 (785) 625-3858

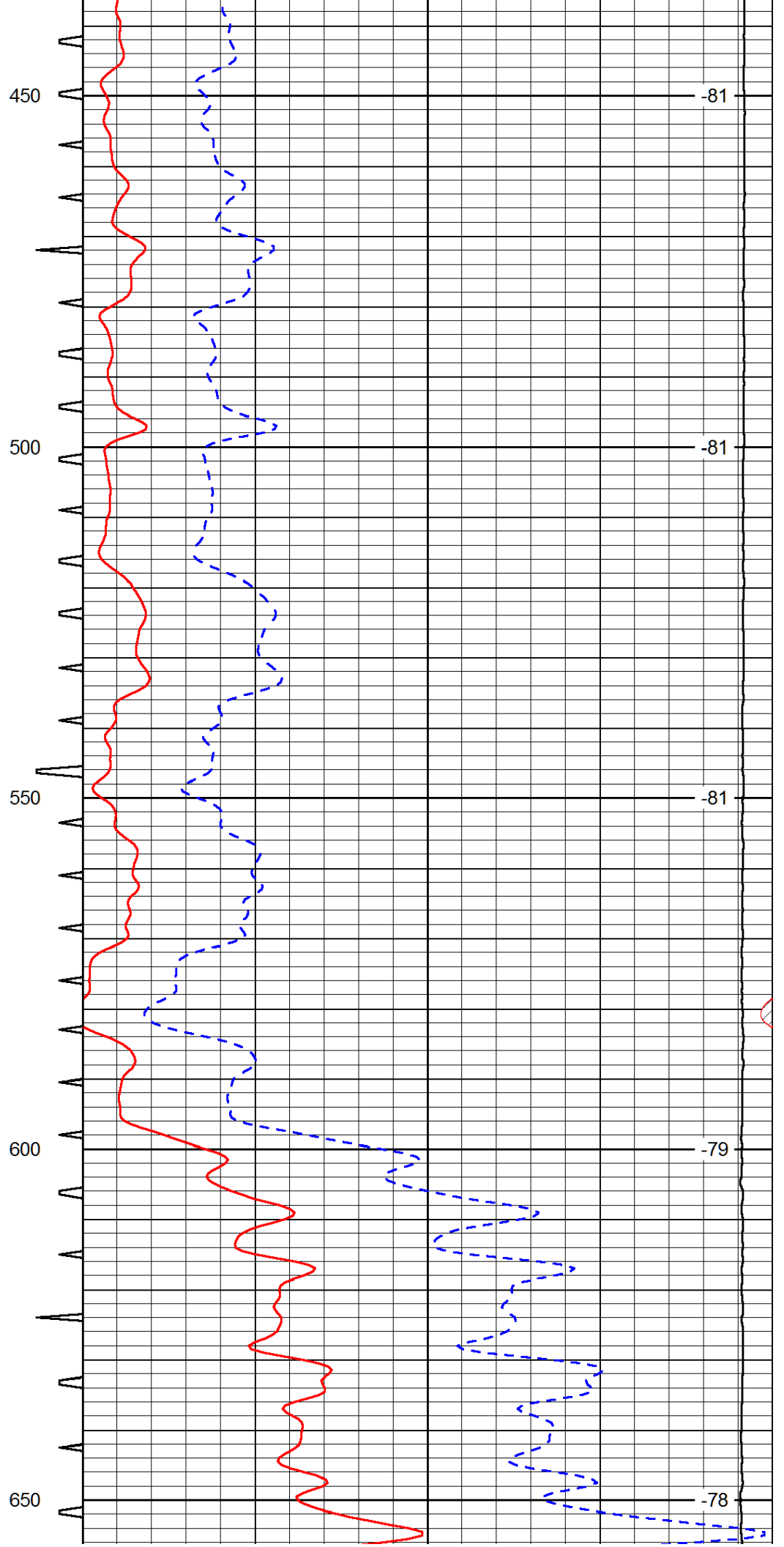
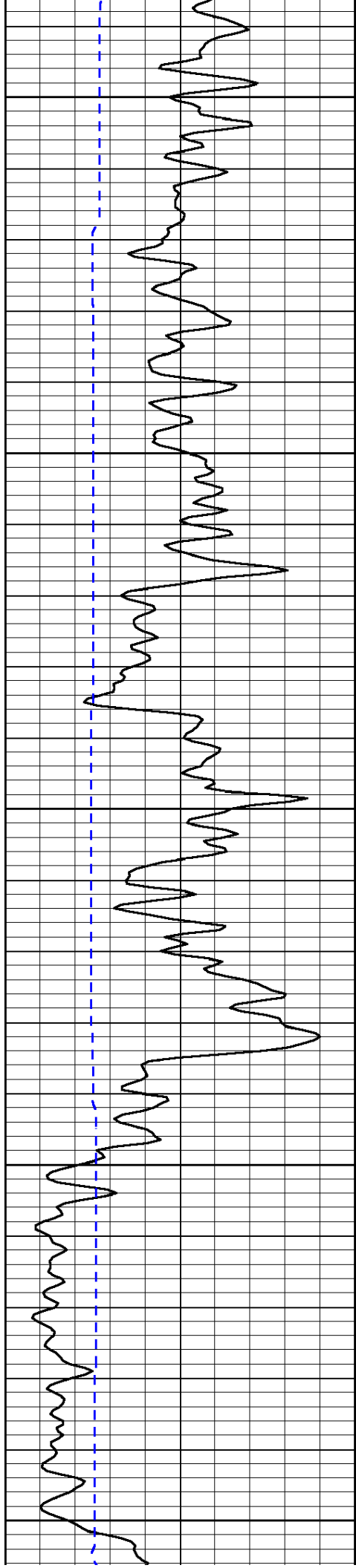
 Quinter,
 2 North to B Rd, 3 East to 78 Rd, 9 North, 1/2 East,
 South into

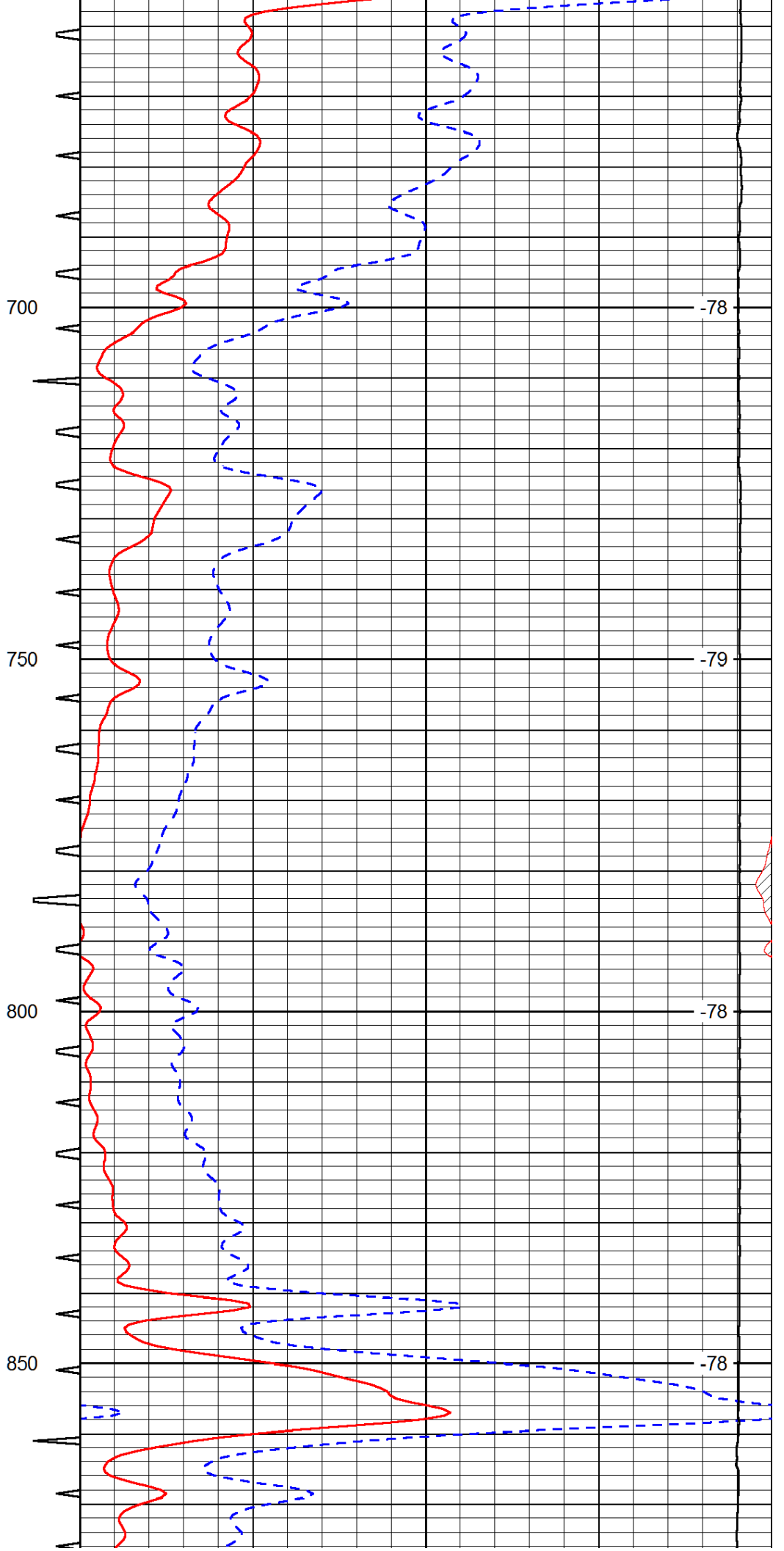
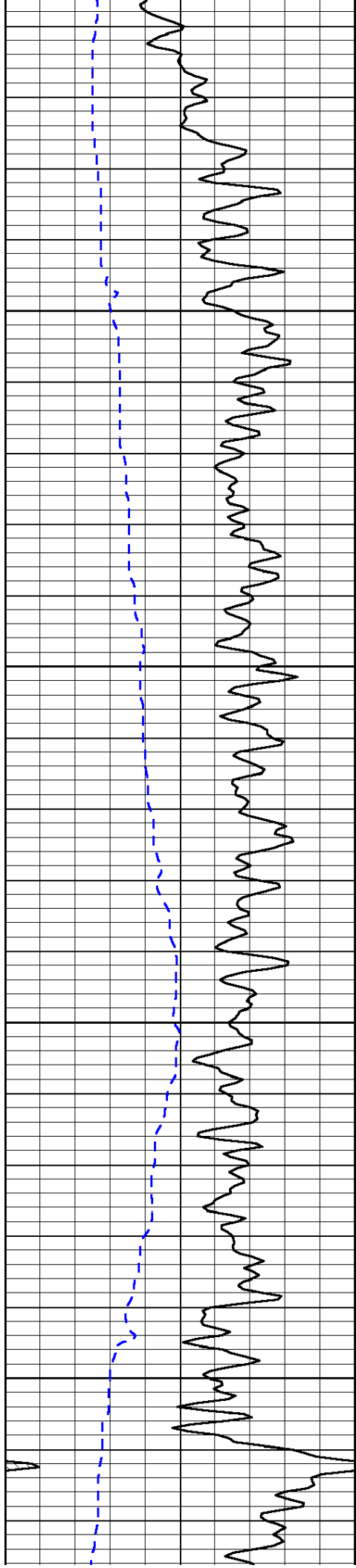
Database File: culbreath_021313hd.db
 Dataset Pathname: dil/culstack
 Presentation Format: sonic
 Dataset Creation: Thu Feb 14 02:05:45 2013
 Charted by: Depth in Feet scaled 1:240

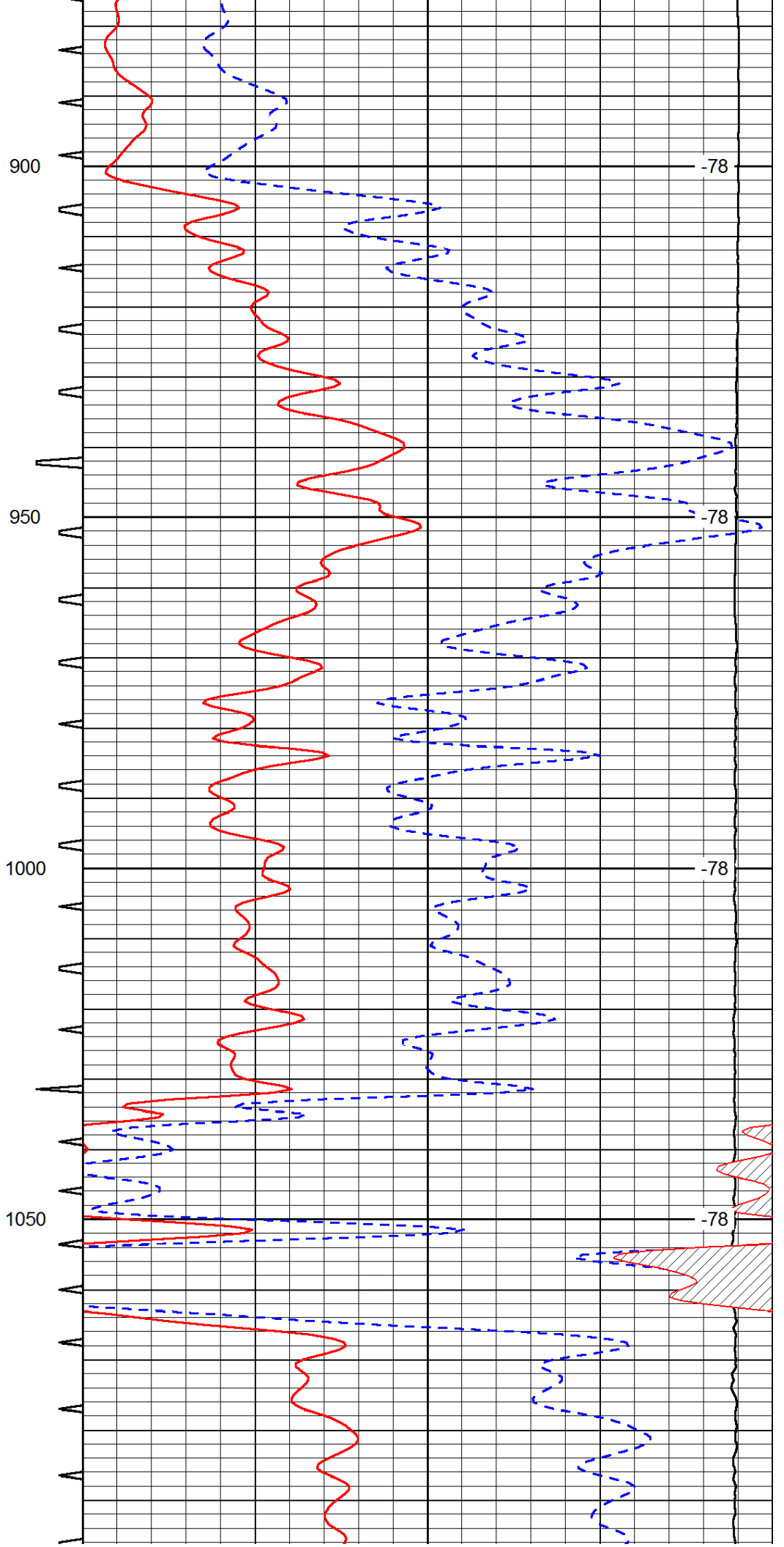
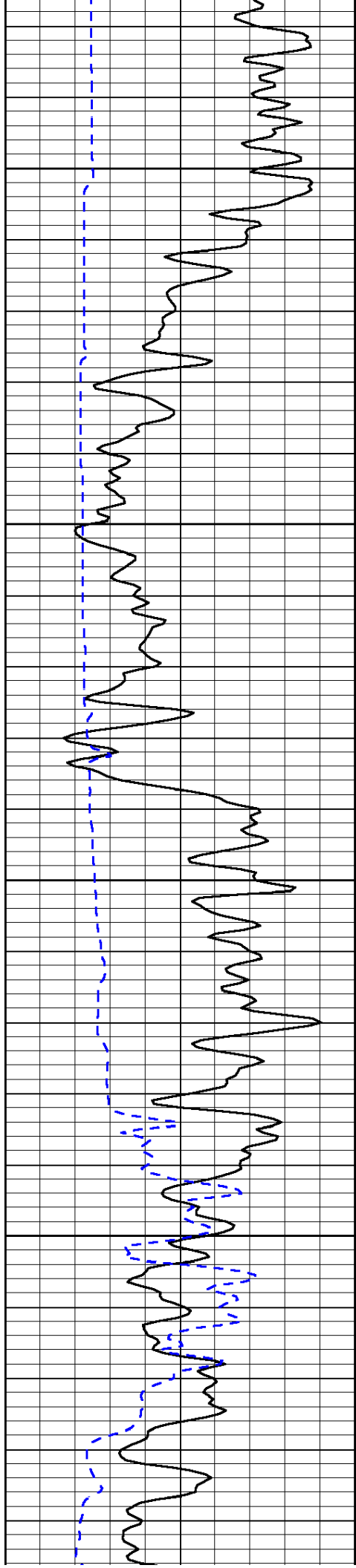
0	Gamma Ray (GAPI)	150	Sonic Int	140	Delta Time (usec/ft) (usec/ft)	40
150	Gamma Ray (GAPI)	300	5 (msec) 0	30	Sonic Porosity (pu)	-10
6	dCAL (in)	16		15000	LTEN (lb) (lb)	0

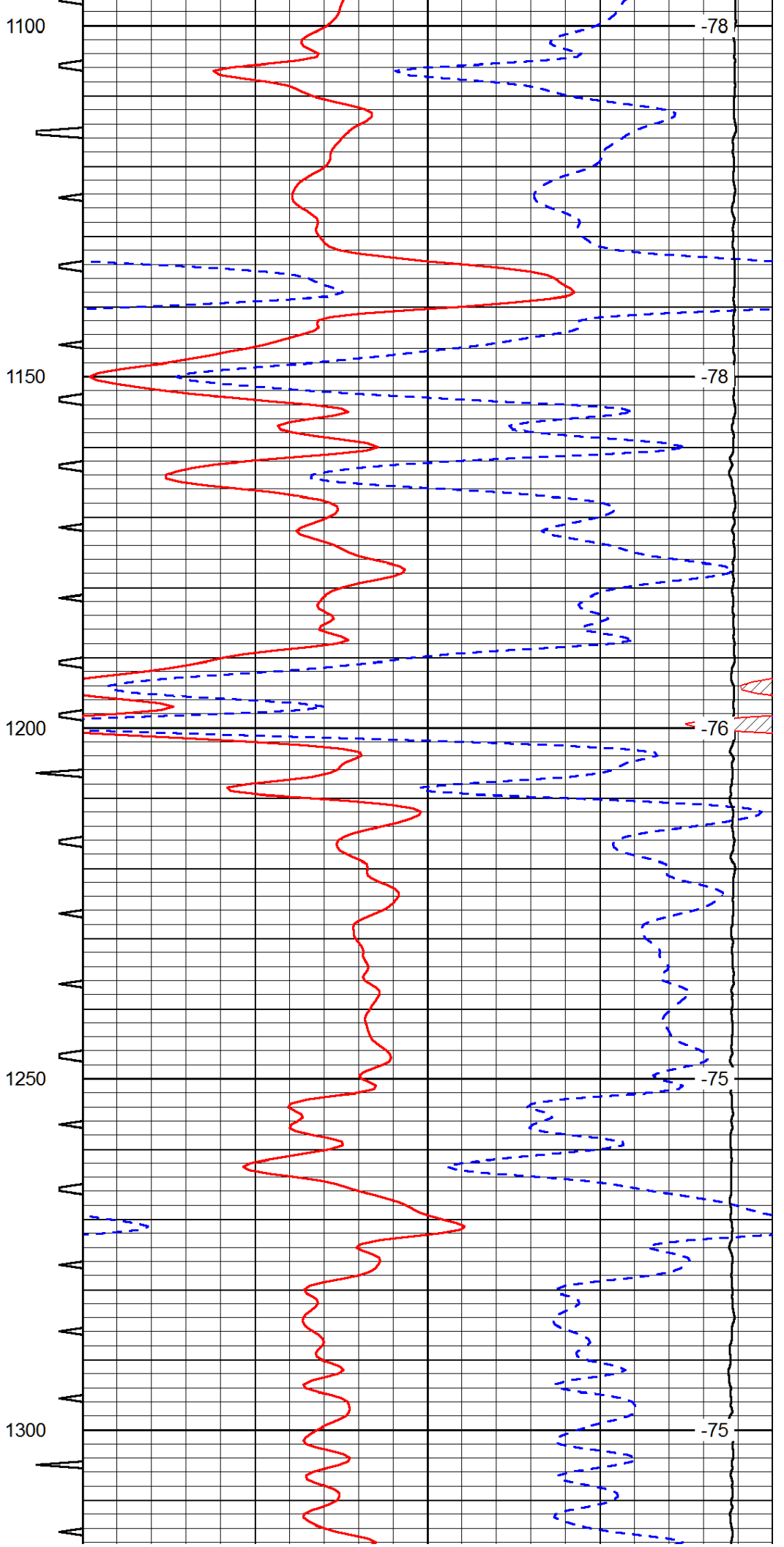
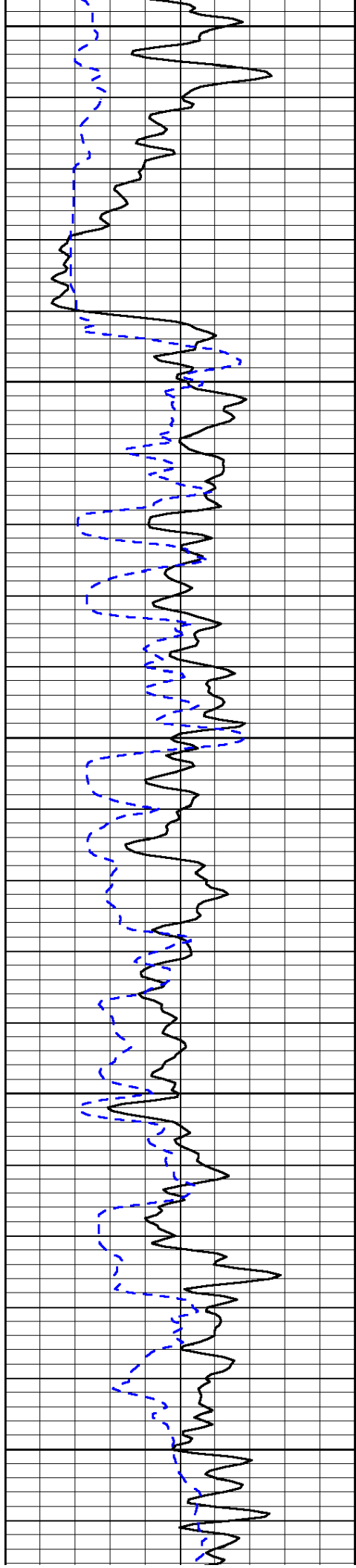
LSPD
(ft/min)

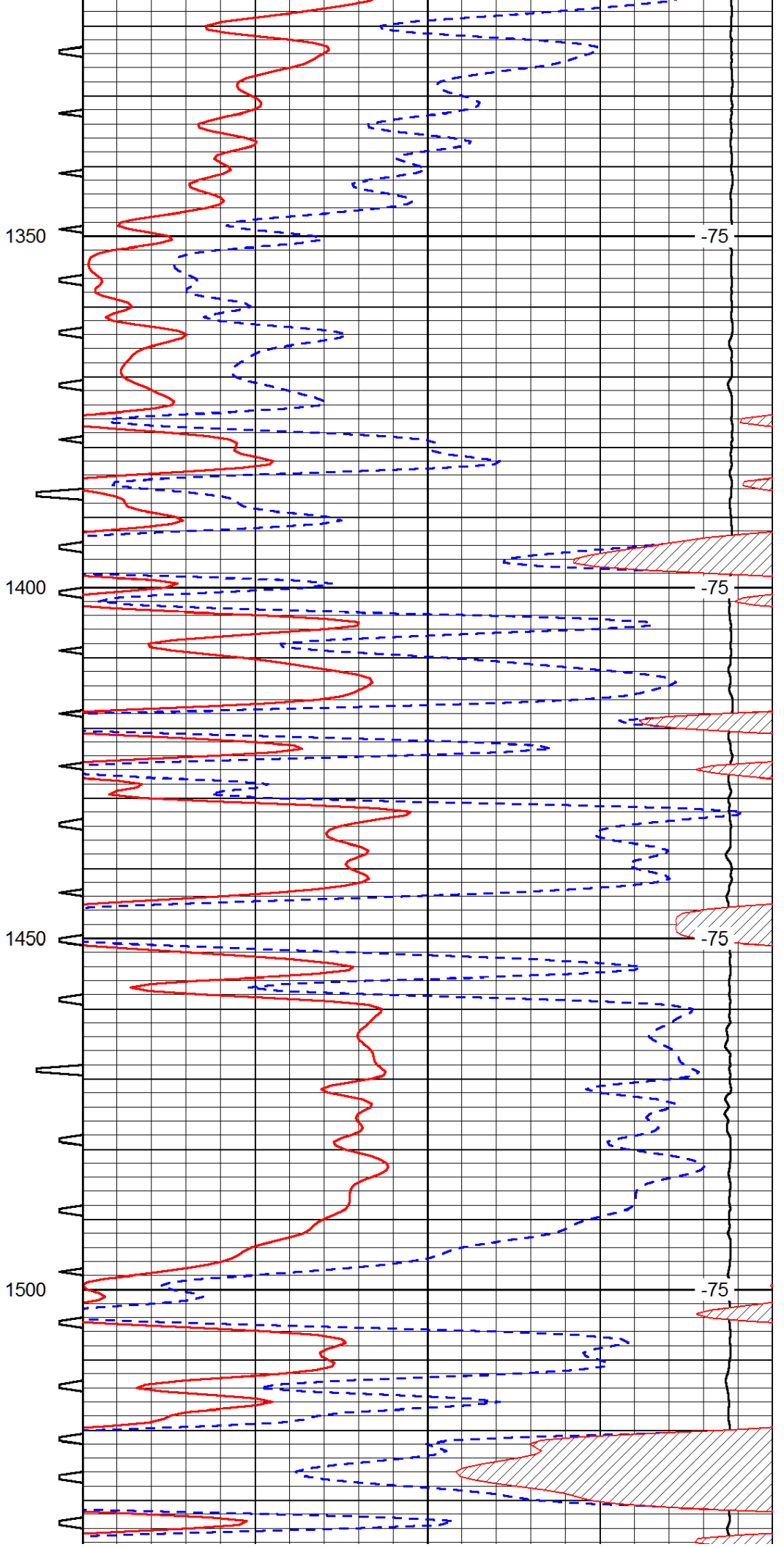
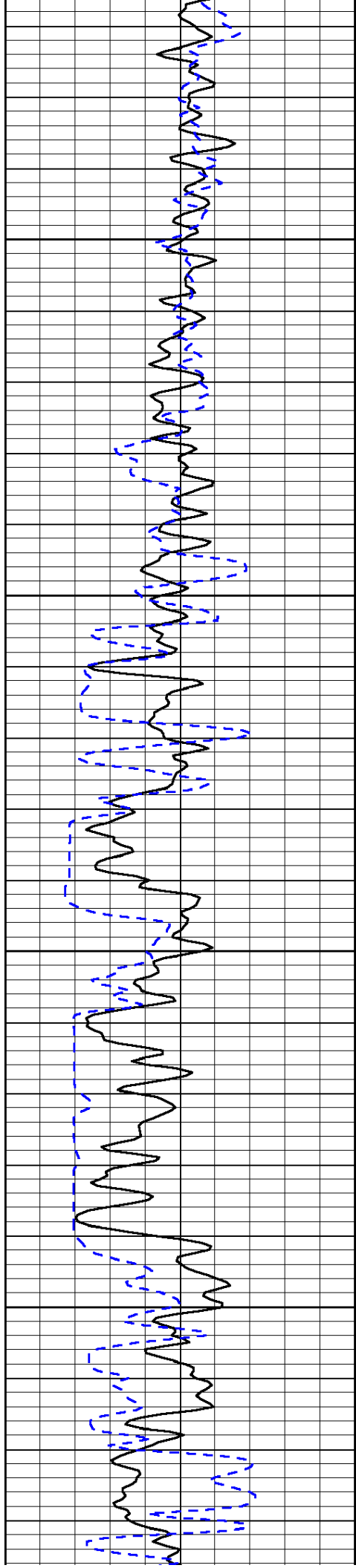


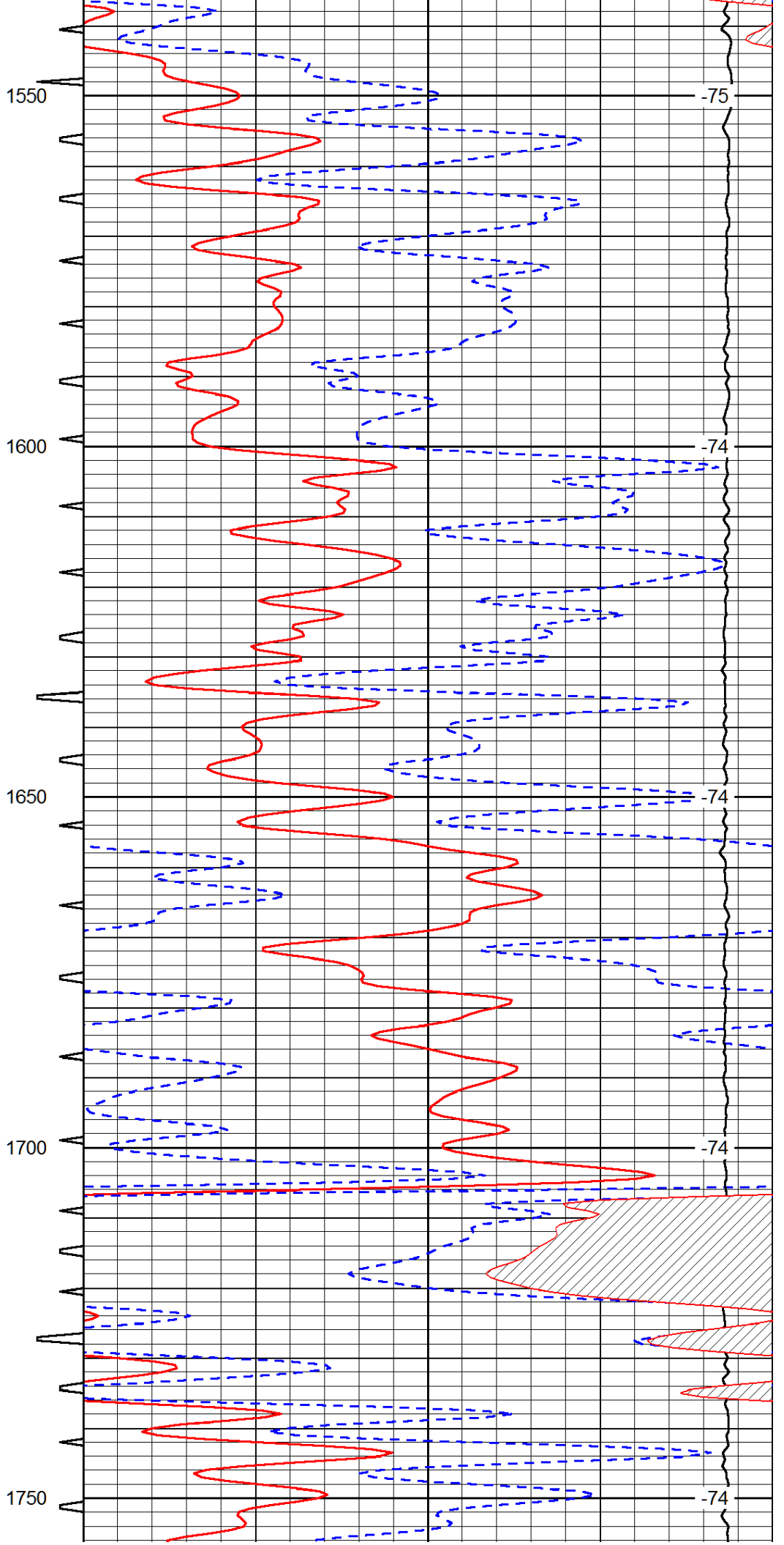
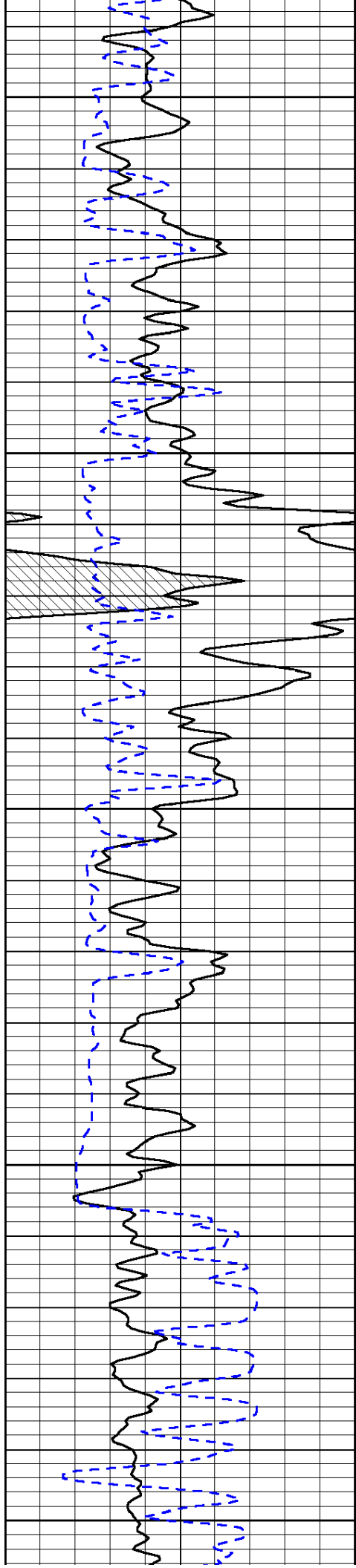


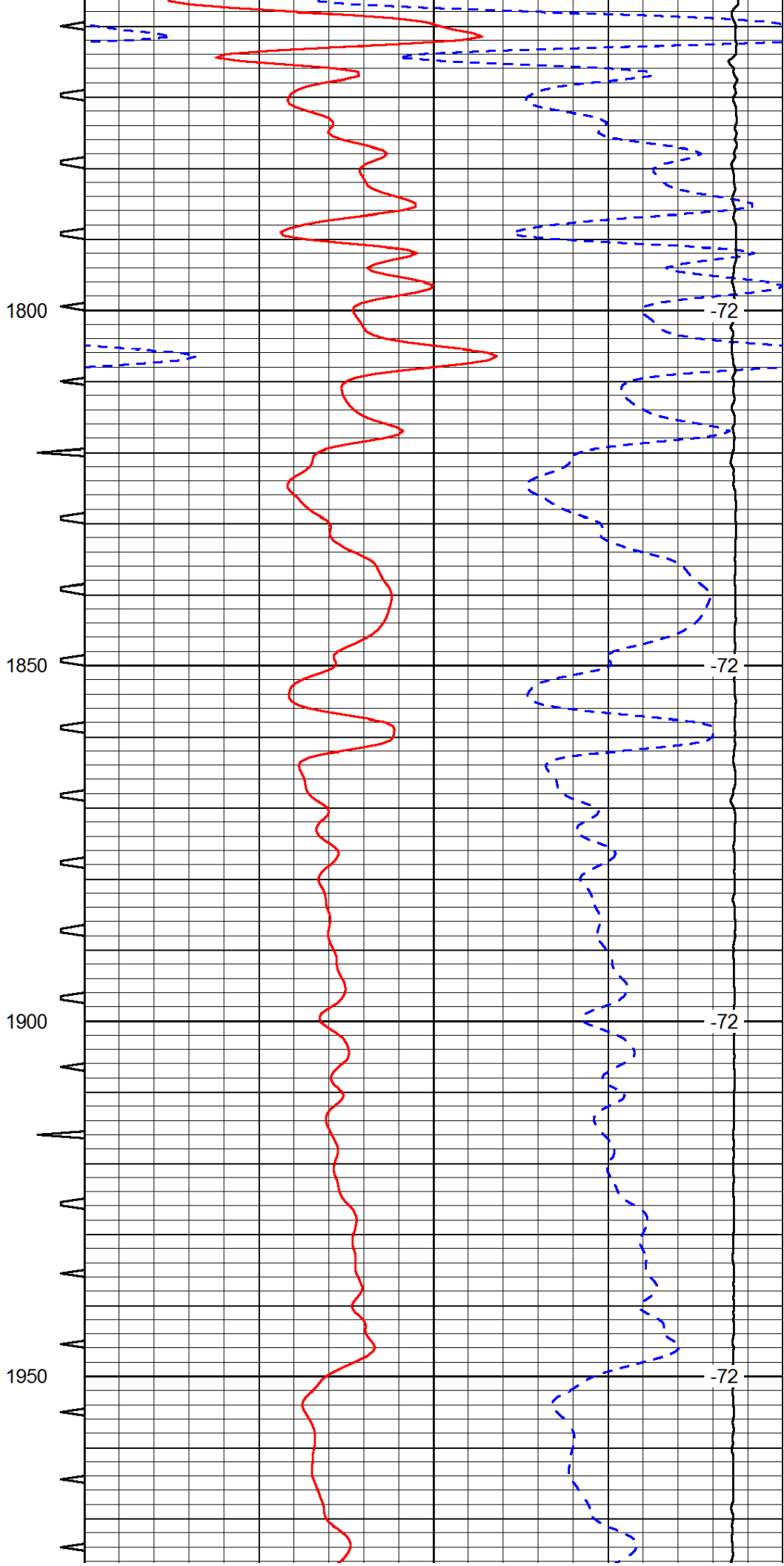
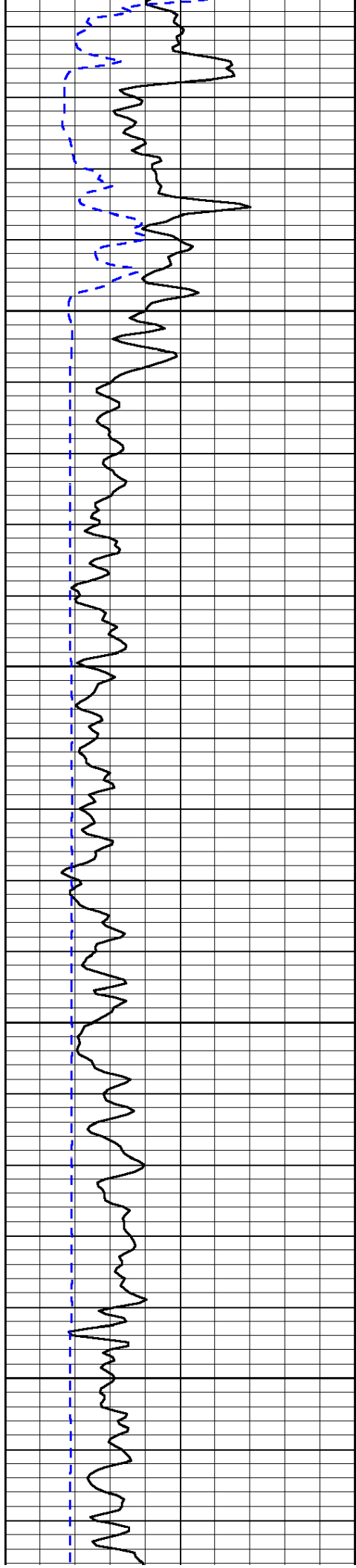


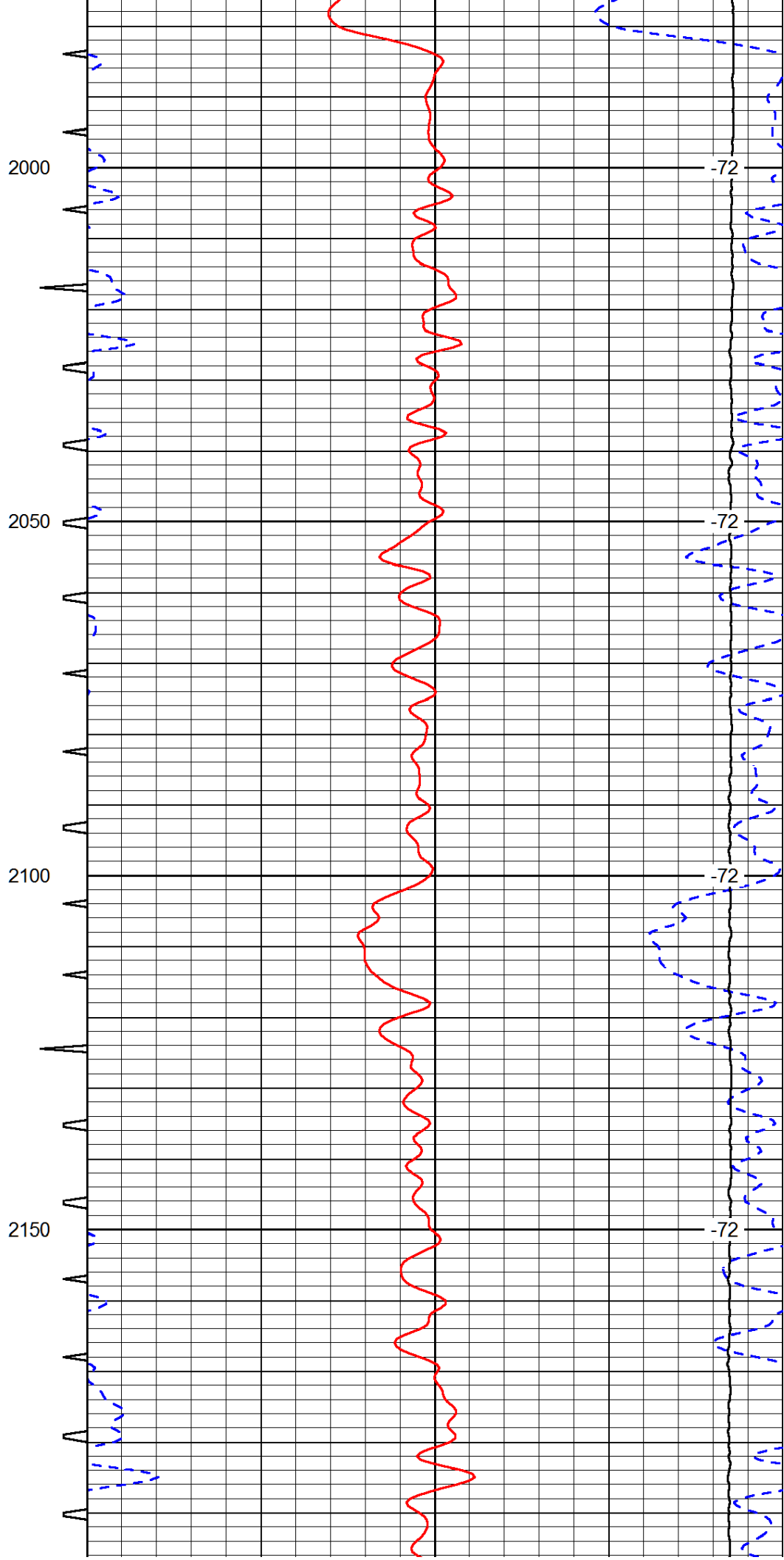
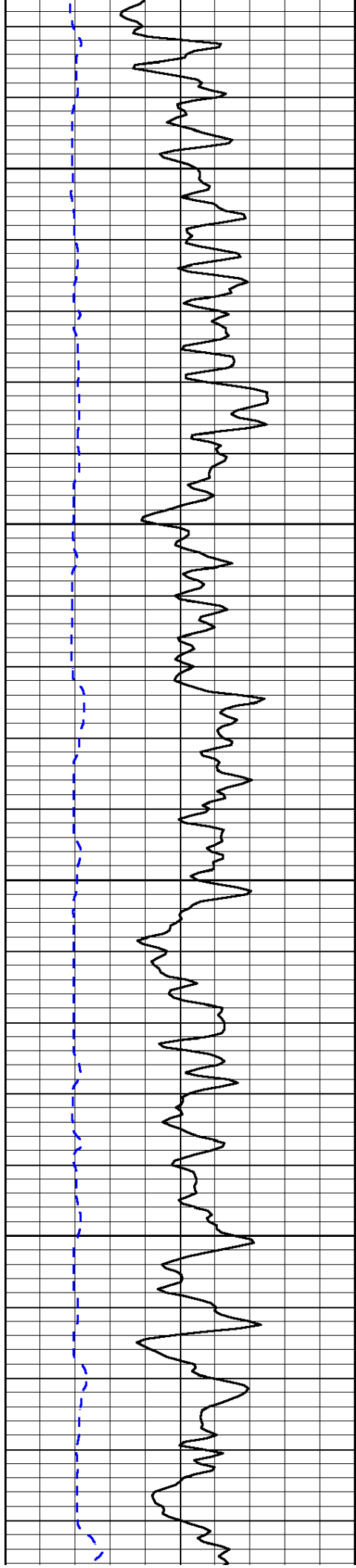


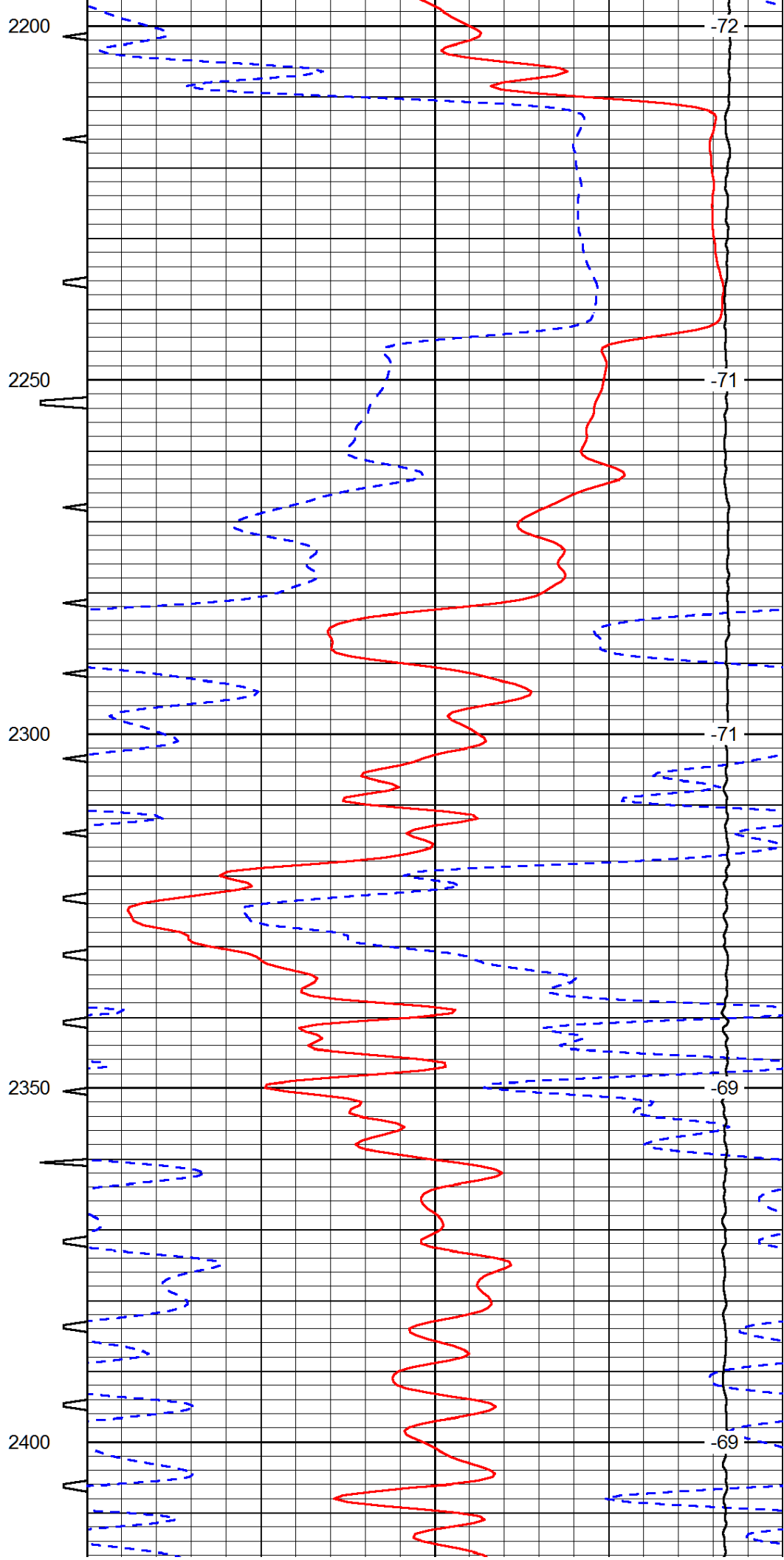
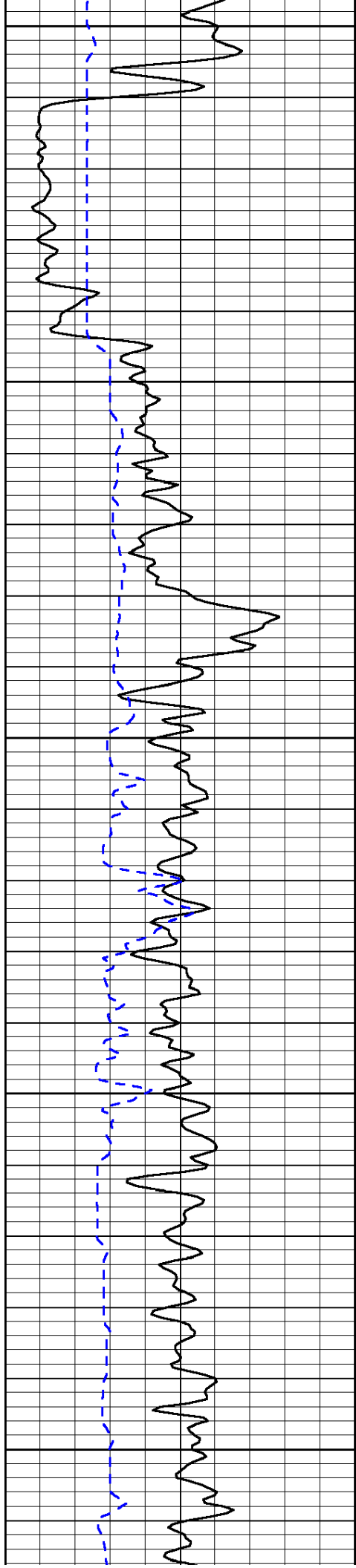


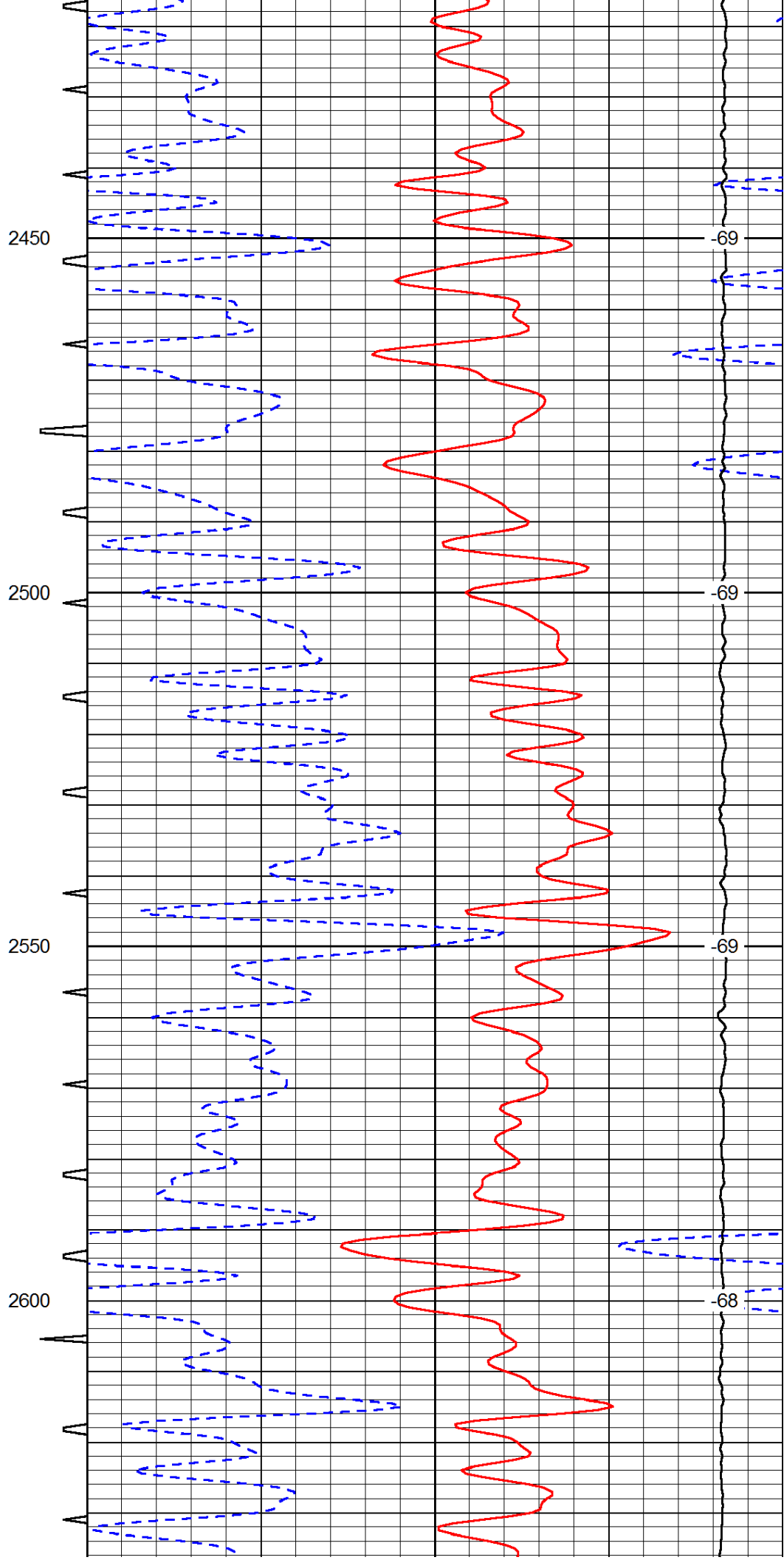
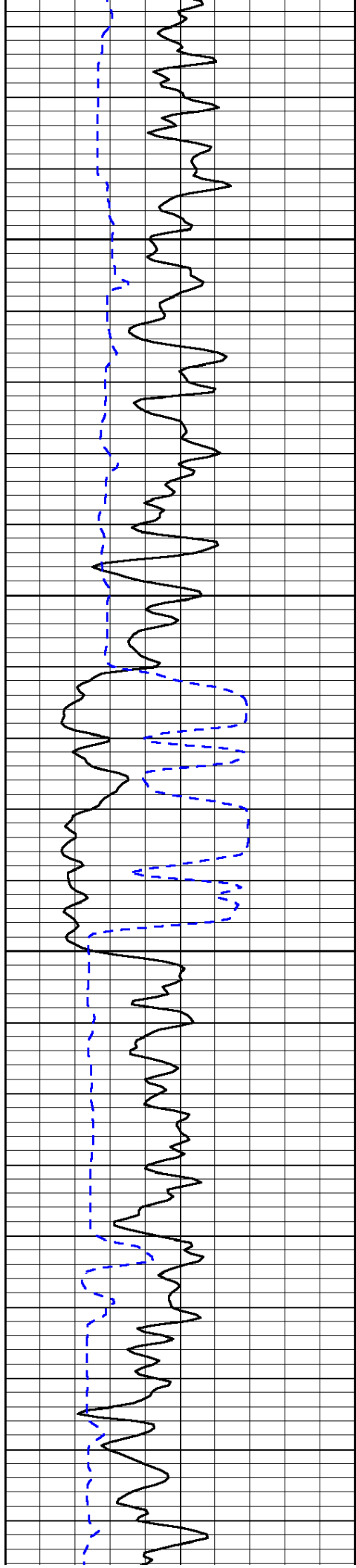


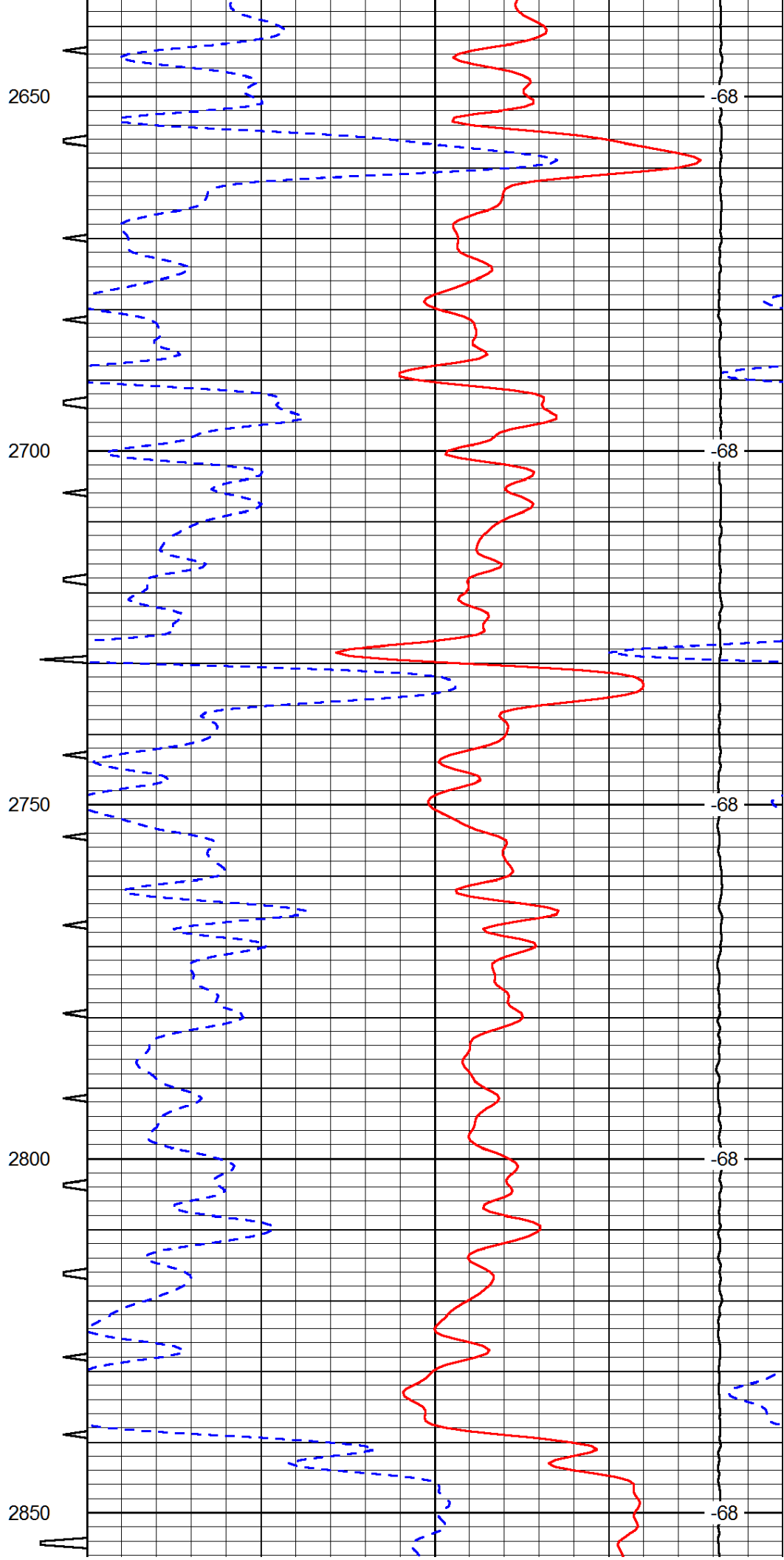
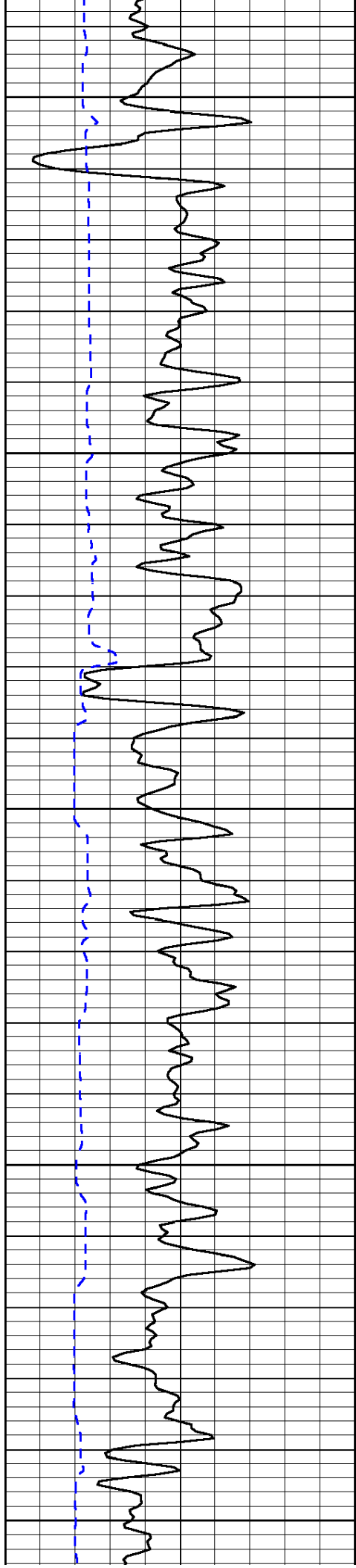


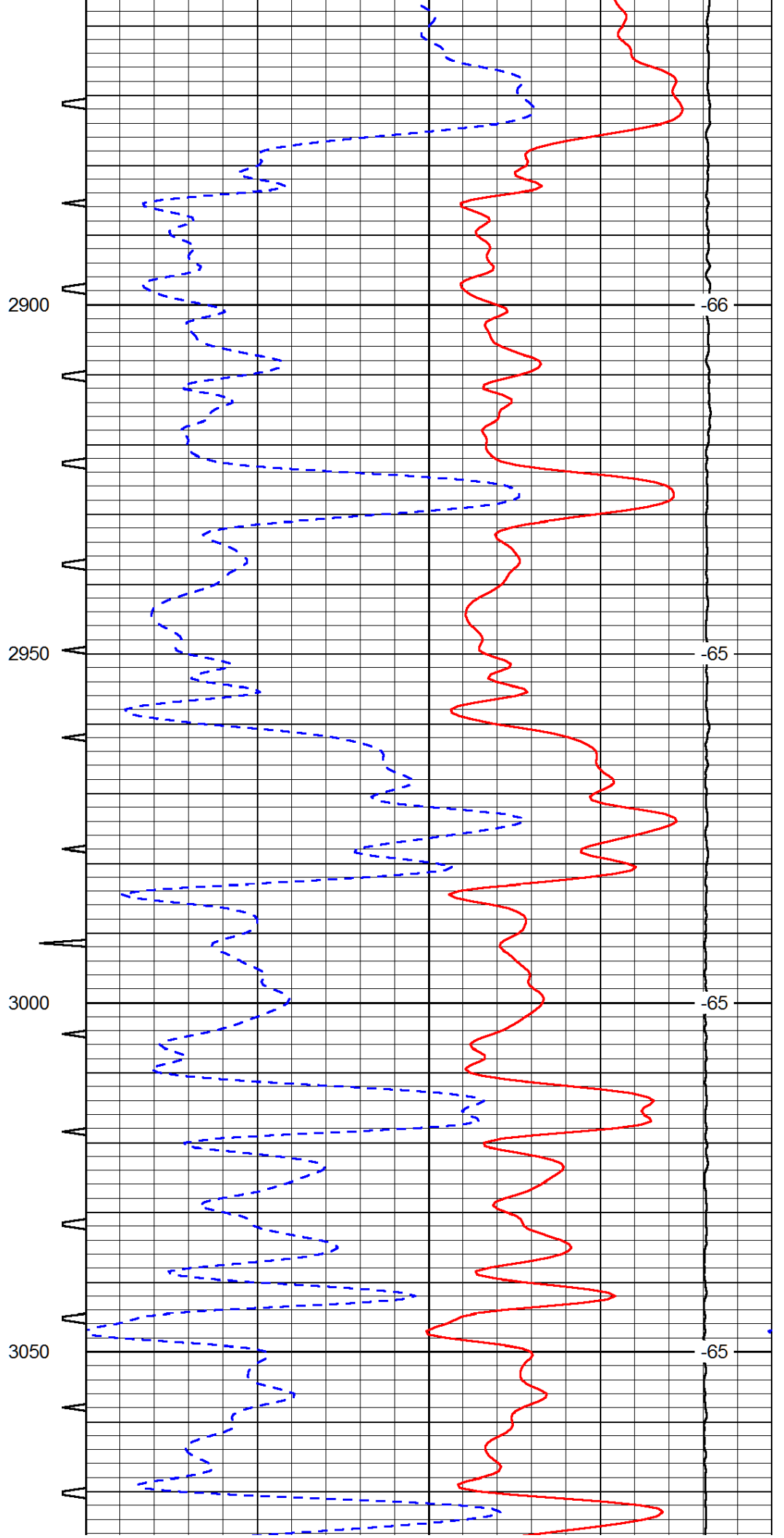
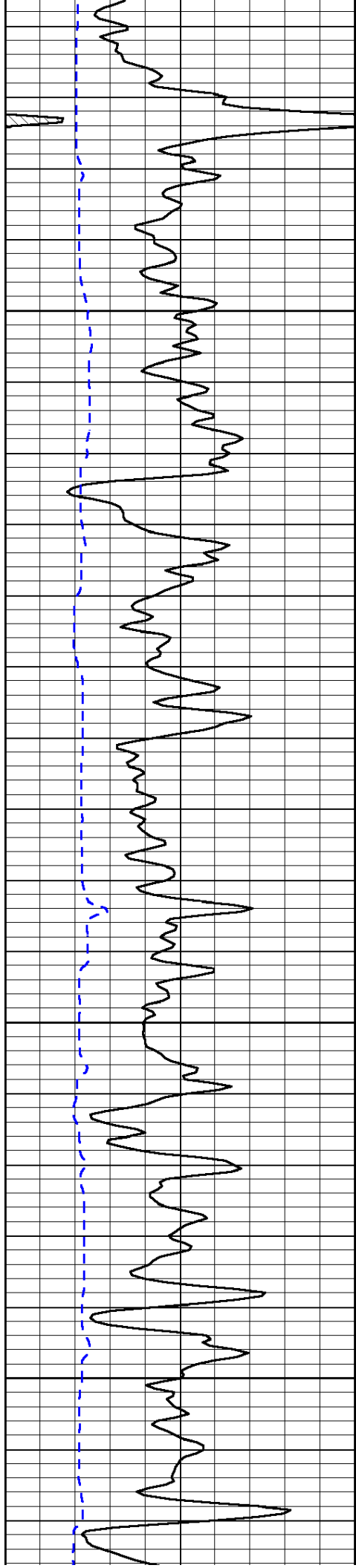


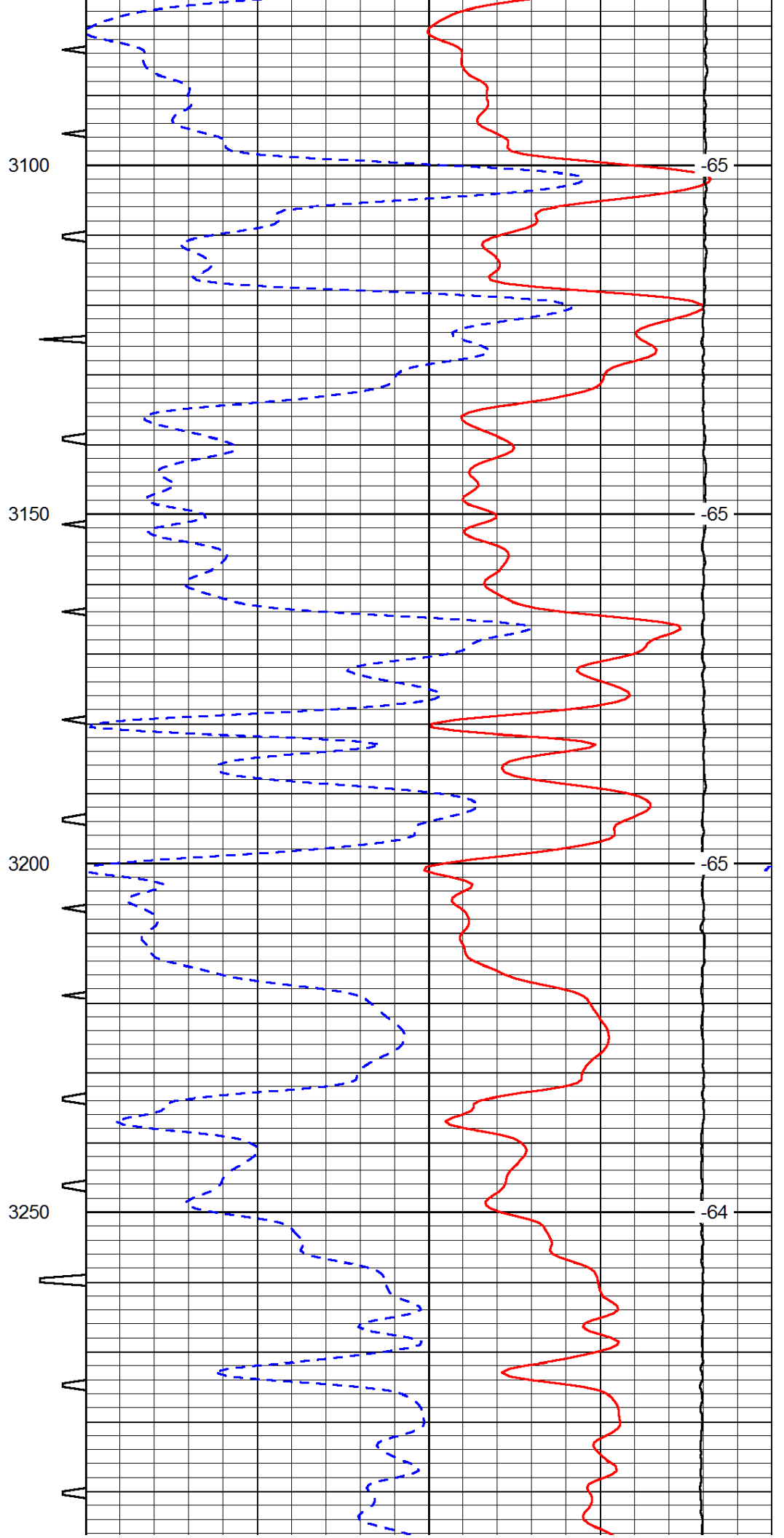
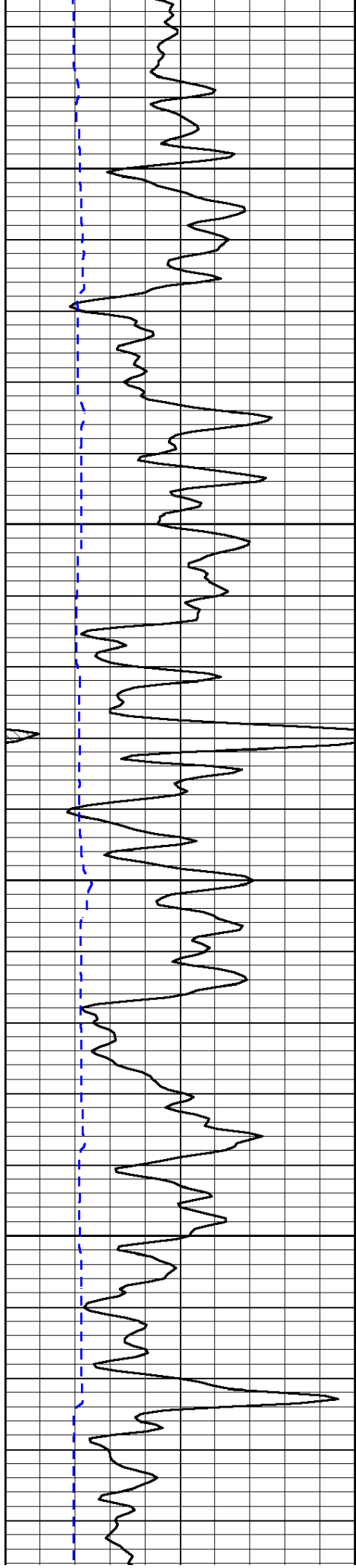


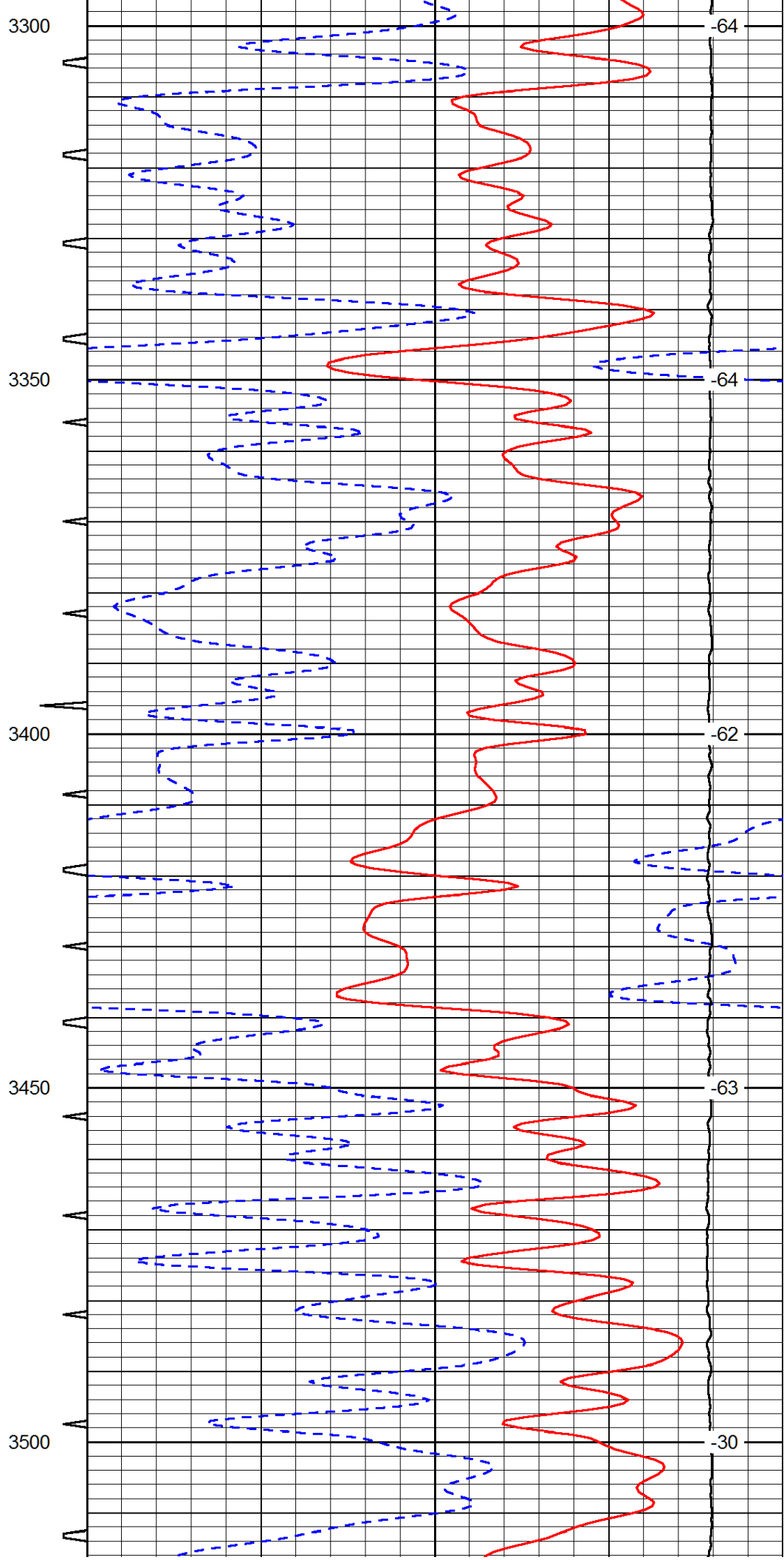
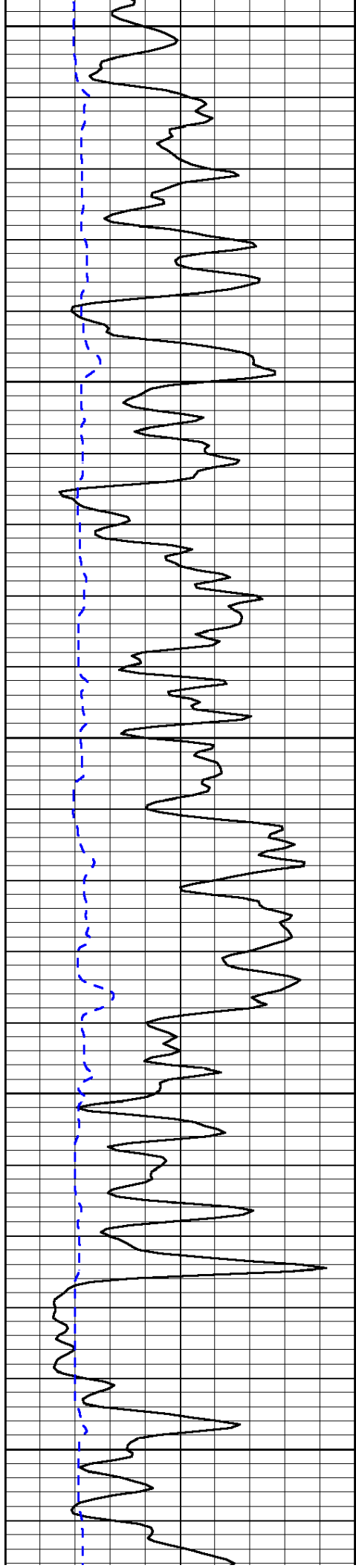


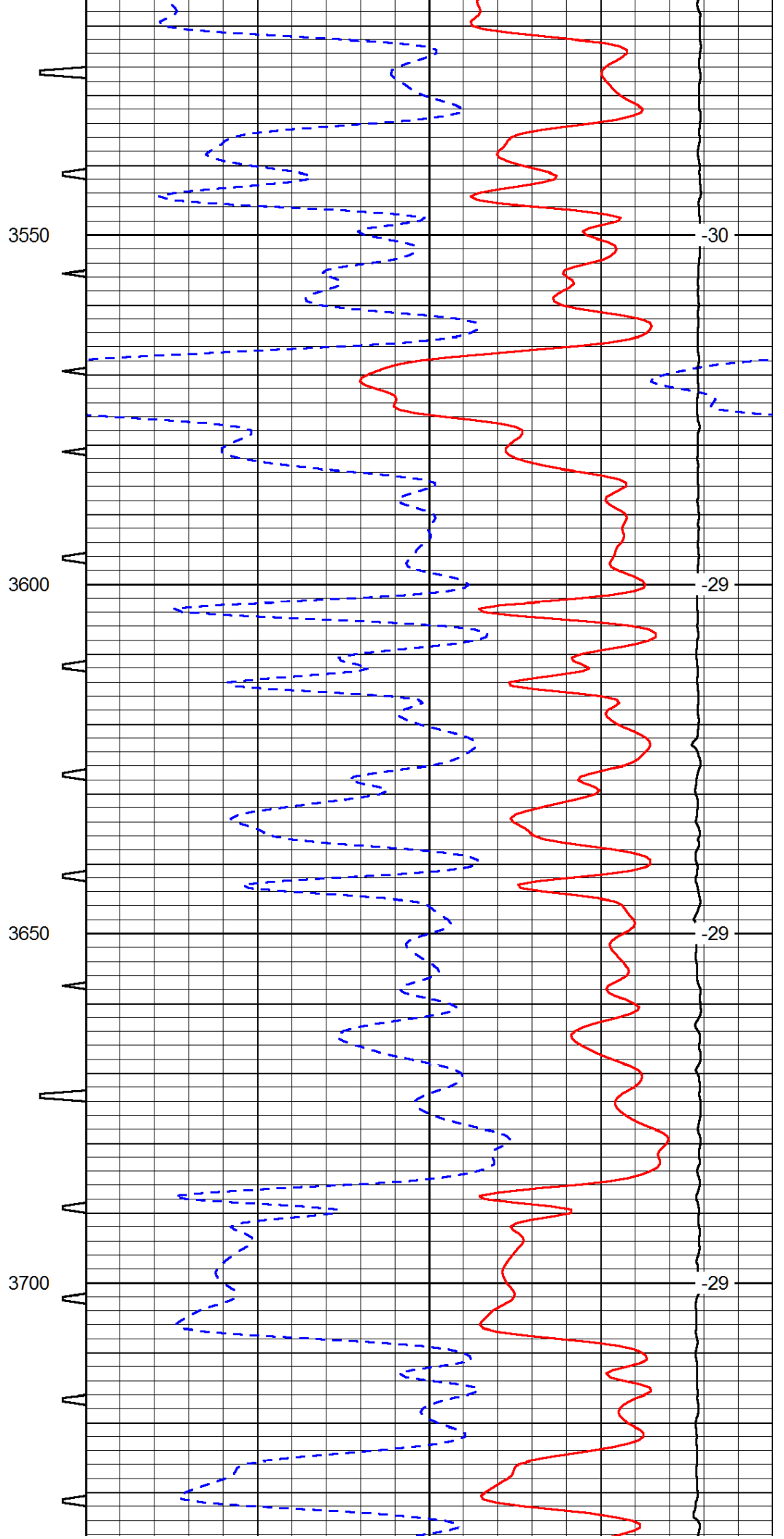
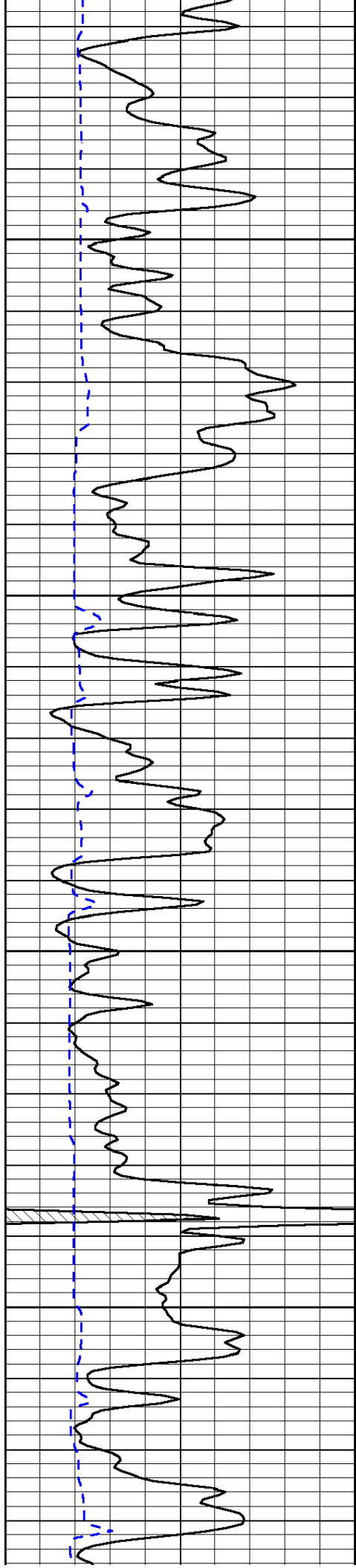


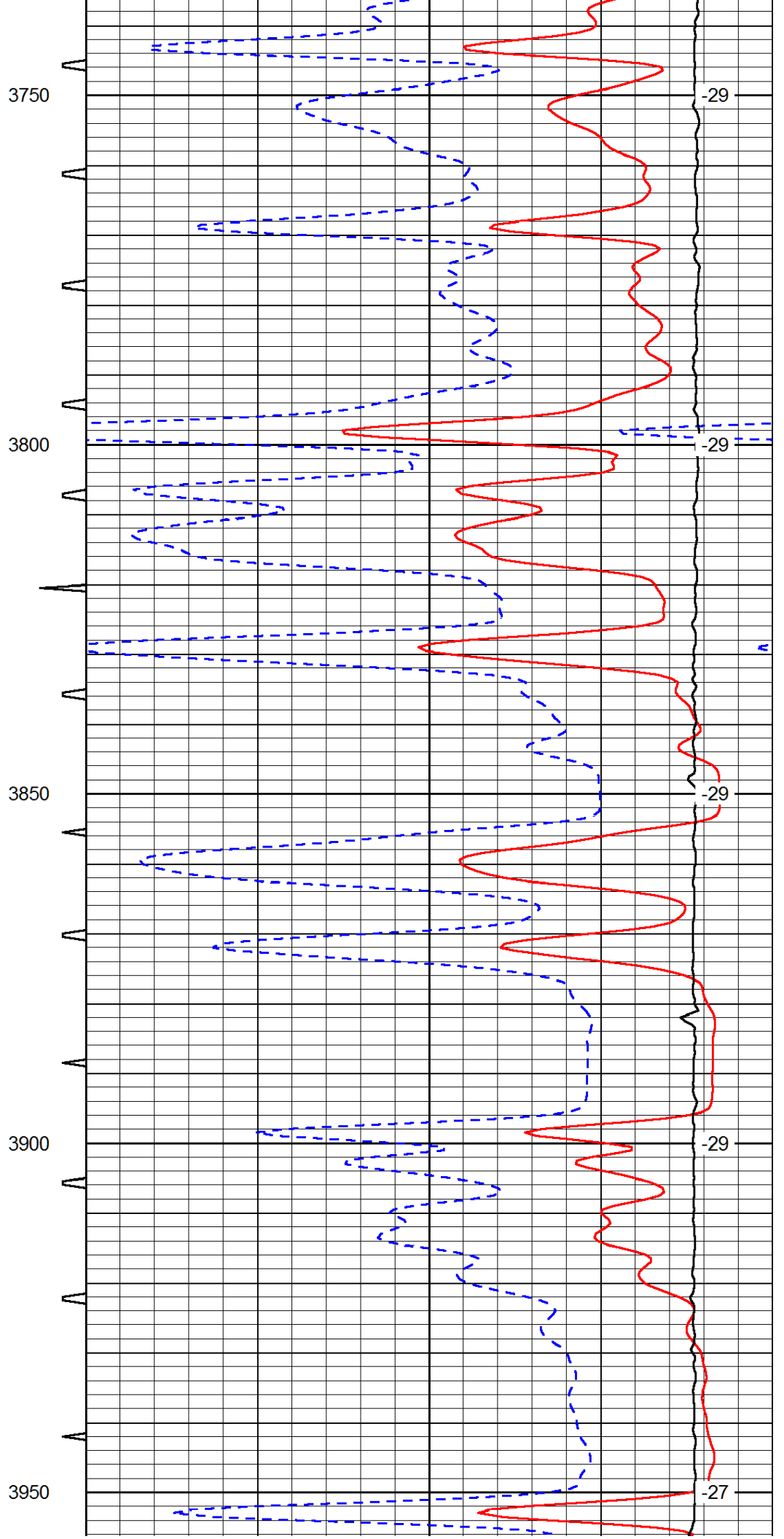
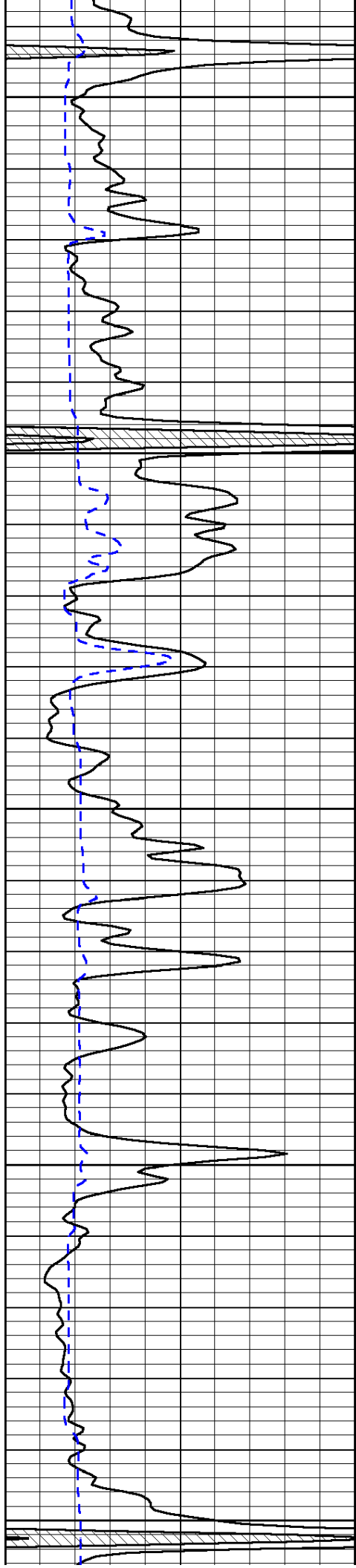


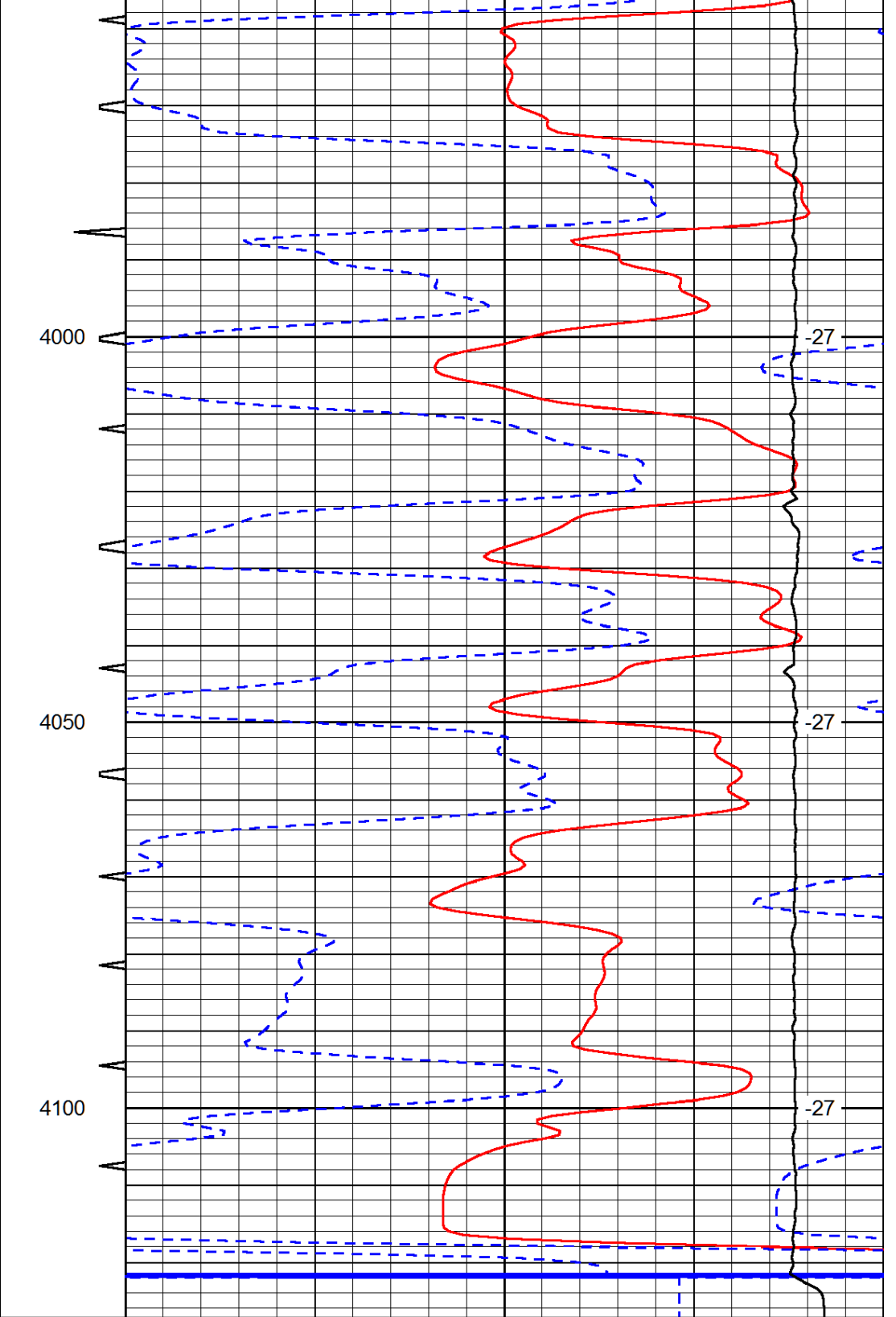
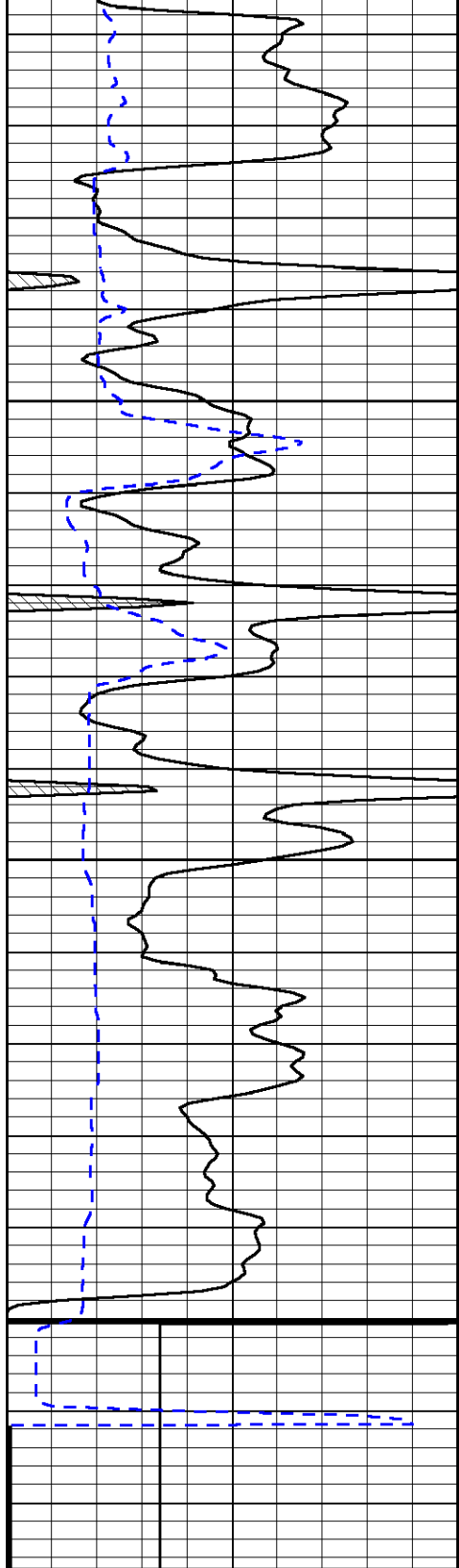












0	Gamma Ray (GAPI)	150	Sonic Int	140	Delta Time (usec/ft) (usec/ft)	40
150	Gamma Ray (GAPI)	300	5 (msec) 0	30	Sonic Porosity (pu)	-10
6	dCAL (in)	16		15000	LTEN (lb) (lb)	0

LSPD
(ft/min)