



Pioneer Energy Services

Microresistivity Log

API No.	15-179-21325-00-00		
Company	Culbreath Oil & Gas Co., Inc.		
Well	Mader #1-01		
Field	Wildcat		
County	Sheridan	State	Kansas
Location	1650' FNL & 2310' FWL		
Sec: 1	Twp: 10S	Rge: 26W	Other Services CNL/CDL DIL/BHCS
Permanent Datum	Ground Level	Elevation 2570	Elevation
Log Measured From	Kelly Bushing	9 Ft. Above Perm. Datum	K.B. 2579
Drilling Measured From	Kelly Bushing		D.F. 2570
			G.L. 2570

Date	2/13/2013
Run Number	Two
Depth Driller	4120
Depth Logger	4122
Bottom Logged Interval	4121
Top Log Interval	3500
Casing Driller	8.625 @ 261
Casing Logger	262
Bit Size	7.875
Type Fluid in Hole	Chemical
Salinity, ppm CL	1000
Density / Viscosity	9.3 52
pH / Fluid Loss	9.4 6.4
Source of Sample	Flowline
Rm @ Meas. Temp	0.80 @ 60
Rmf @ Meas. Temp	0.60 @ 60
Rmc @ Meas. Temp	1.08 @ 60
Source of Rmf / Rmc	Charts
Rm @ BHT	0.40 @ 119
Operating Rig Time	5 Hours
Max Rec. Temp. F	119
Equipment Number	91
Location	Hays
Recorded By	D. Schmidt
Witnessed By	Steve Murphy

<<< Fold Here >>>

All interpretations are opinions based on inferences from electrical or other measurements and we cannot and do not guarantee the accuracy or correctness of any interpretation, and we shall not, except in the case of gross or willful negligence on our part, be liable or responsible for any loss, costs, damages, or expenses incurred or sustained by anyone resulting from any interpretation made by any of our officers, agents or employees. These interpretations are also subject to our general terms and conditions set out in our current Price Schedule.

Comments

Thank you for using Log-Tech, Inc.
(785) 625-3858

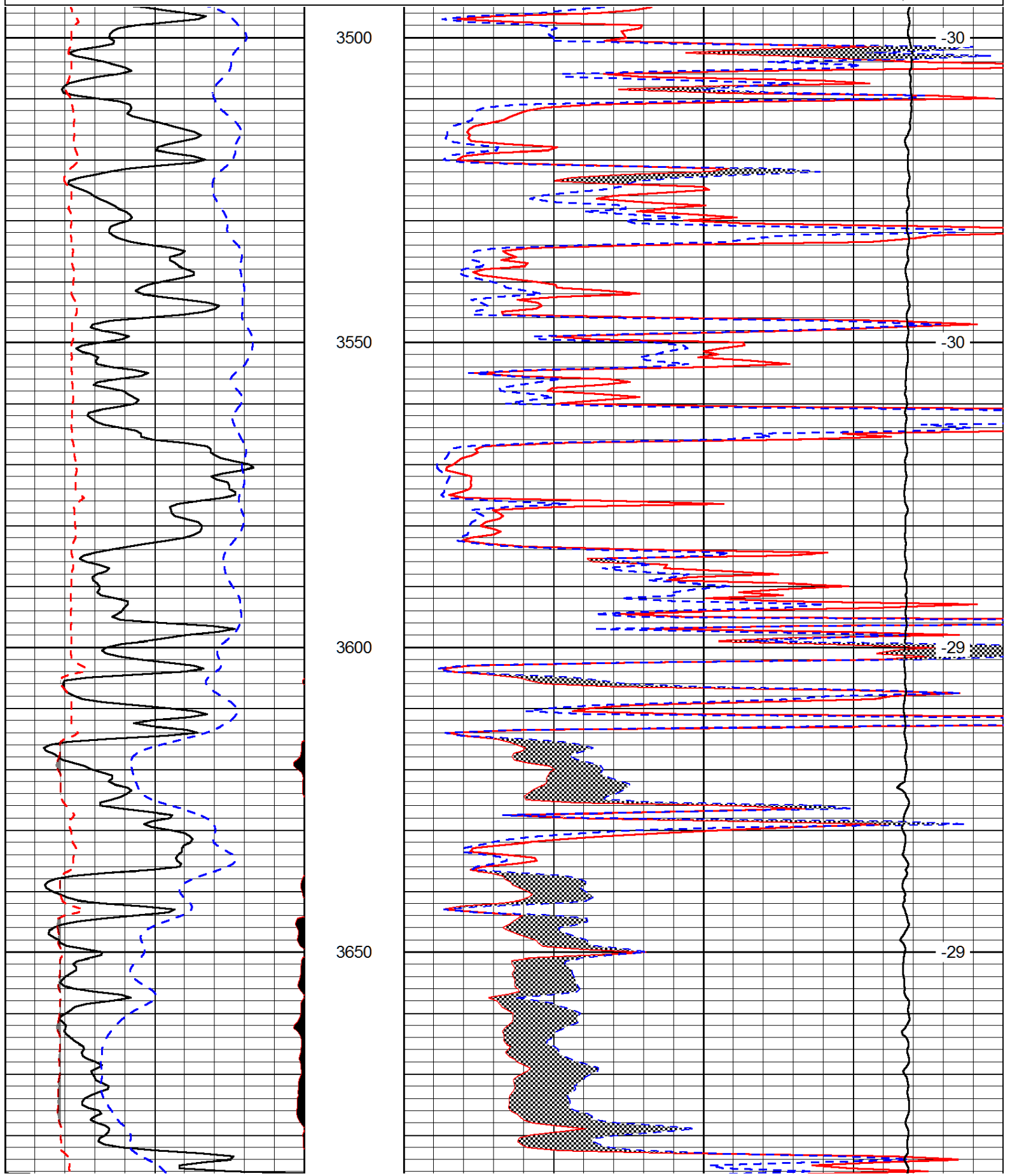
Quinter,
2 North to B Rd, 3 East to 78 Rd, 9 North, 1/2 East,
South into

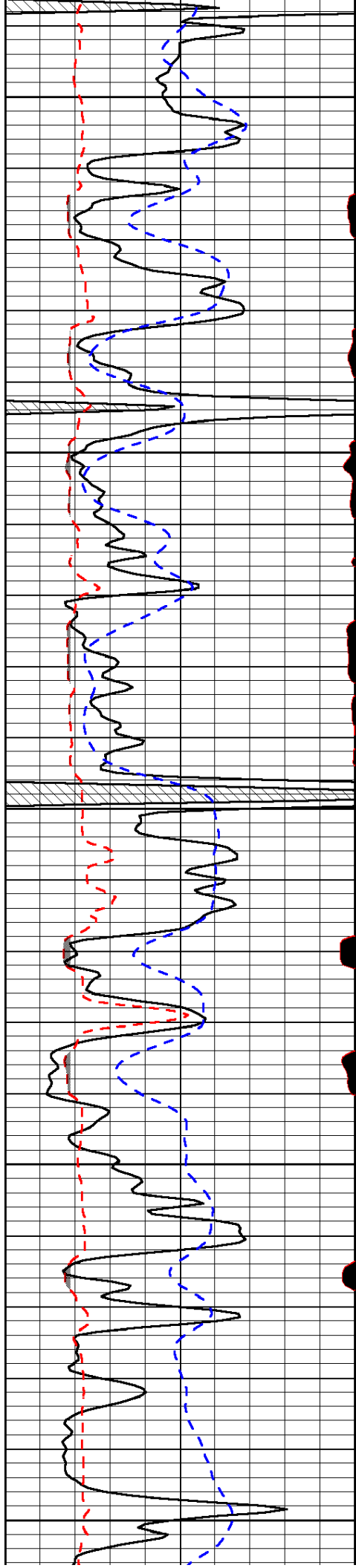
Database File:	culbreath_021313hd.db
Dataset Pathname:	dil/culstack
Presentation Format:	micro
Dataset Creation:	Thu Feb 14 02:05:45 2013
Charted by:	Depth in Feet scaled 1:240

0	Gamma Ray (GAPI)	150
6	MCAL (in)	16
2.875	Mud Cake (in)	7.875
-200	SP (mV)	0

0	Micro Inverse 1 X 1 (Ohm-m)	40
0	Micro Normal 2" (Ohm-m)	40
10000	Line Weight (lb)	0

LSPD
(ft/min)





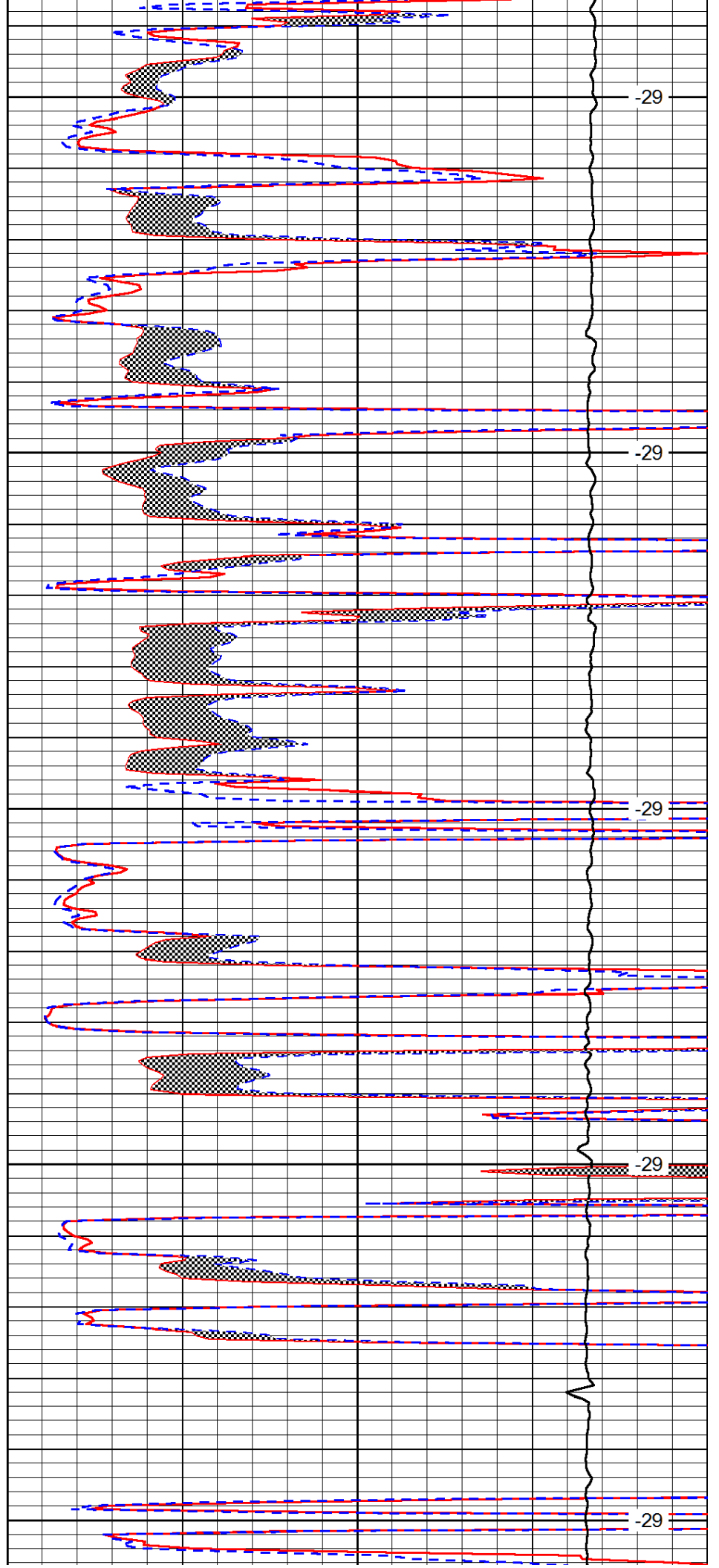
3700

3750

3800

3850

3900



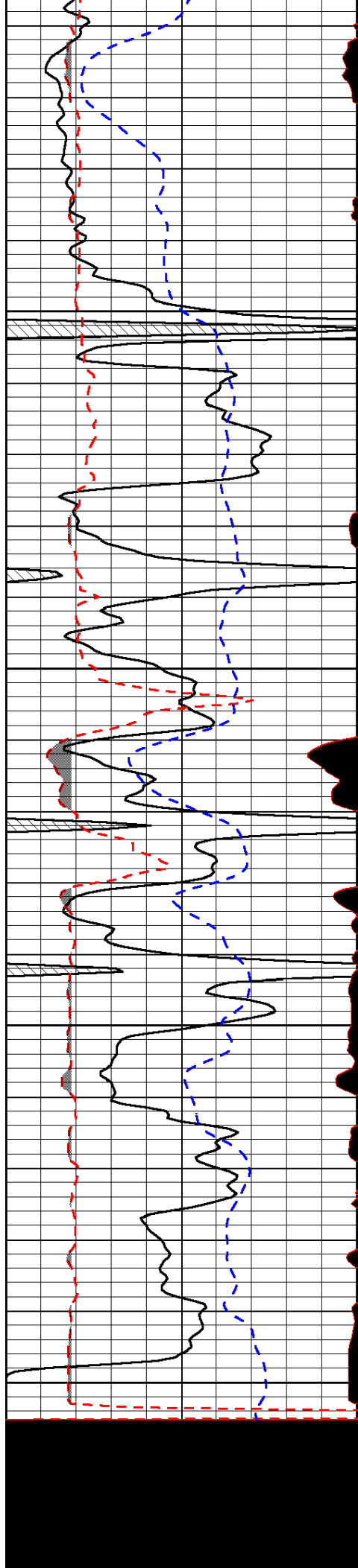
-29

-29

-29

-29

-29

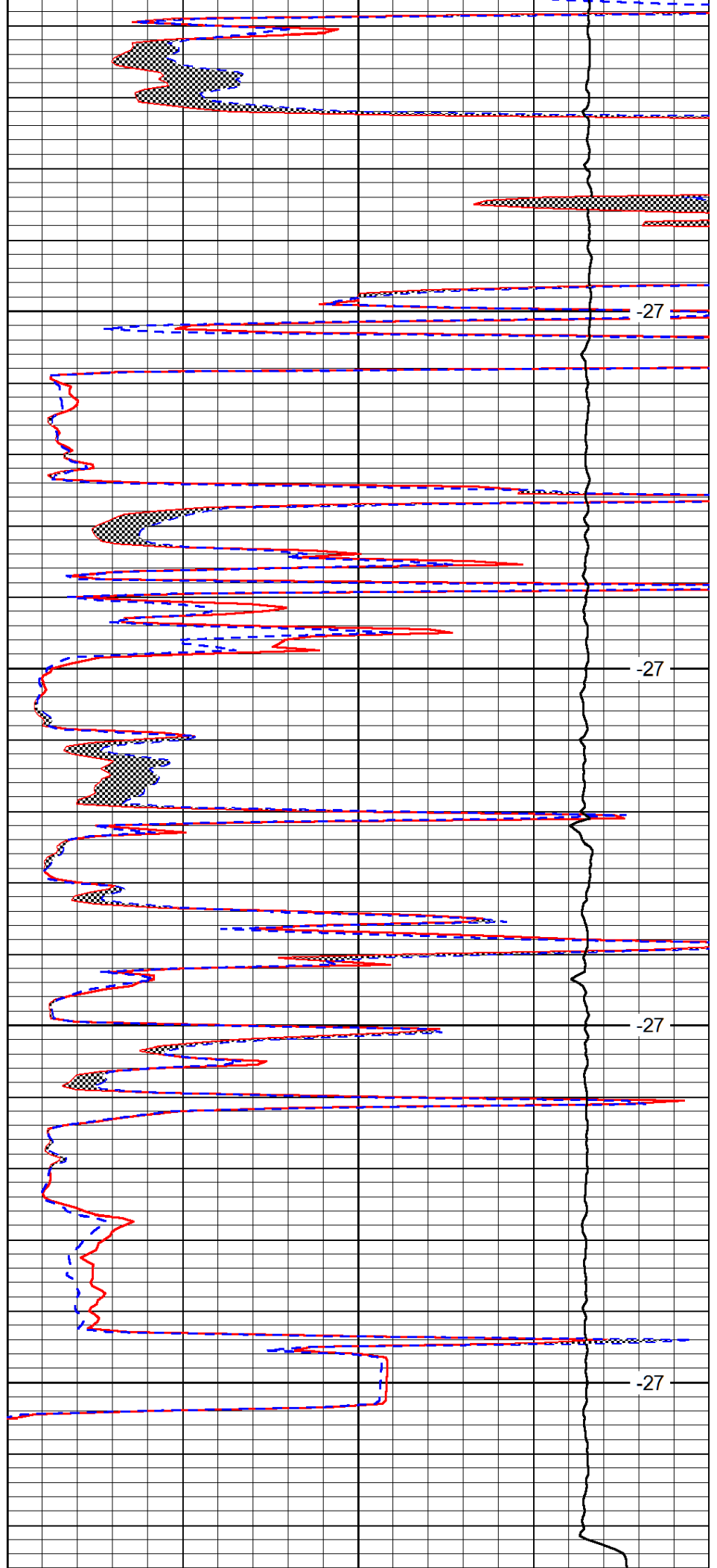


3950

4000

4050

4100



-27

-27

-27

-27

0	Gamma Ray (GAPI)	150
6	MCAL (in)	16
2.875	Mud Cake (in)	7.875
-200	SP (mV)	0

0	Micro Inverse 1 X 1 (Ohm-m)	40
0	Micro Normal 2" (Ohm-m)	40
10000	Line Weight (lb)	0

LSPD
(ft/min)