

**COMPLETION
& PRODUCTION
SERVICES CO.**

**GAMMA RAY
CORRELATION
LOG**

Company: RITCHIE EXPLORATION, INC.
Well: #1 KUHN 19A
Field: WILD CAT
County: GOVE
State: KANSAS

Location: 1900' FNL & 1480' FEL
API #: 15-083-22085-0000
Other Services:

SEC 19 TWP 12S RGE 28W
Permanent Datum: GROUND LEVEL Elevation: 2147
Log Measured From: KELLY BUSHING & A.G.L.
Drilling Measured From: KELLY BUSHING
Elevation: K.B. 2755
D.F. 2753
G.L. 2147

Date: 12-18-12
Run Number: ONE
Depth Driller: 4618
Depth Logger: 4552
Bottom Logged Interval: 3552
Open Hole Size: 7 7/8
Type Fluid: WATER
Density / Viscosity:
Max. Recorded Temp.:
Estimated Cement Top:

Time Well Nearly:
Time Logger on Bottom:
Equipment Number: 788
Reasoned By: HAYS
Witnessed By: JEREMY SEB
TOMMY ATKINS

Run Number: TMO
Borehole Record: Bit From To
ONE 12 1/4 235
TWO 7 7/8 235

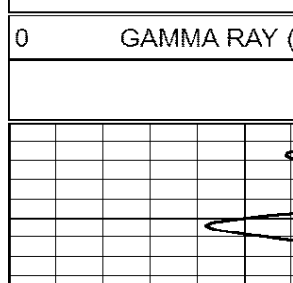
Casing Record: Size WpFl Top Bottom
Surface String 8 5/8 0 235
Prod. String 4 1/2
Production String: Liner

<<< Fold Here >>>

All interpretations are opinions based on inferences from electrical or other measurements and we cannot and do not guarantee the accuracy or correctness of any interpretation, and we shall not, except in the case of gross or willful negligence on our part, be liable or responsible for any loss, costs, damages, or expenses incurred or sustained by anyone resulting from any interpretation made by any of our officers, agents or employees. These interpretations are also subject to our general terms and conditions set out in our current Price Schedule.

Comments

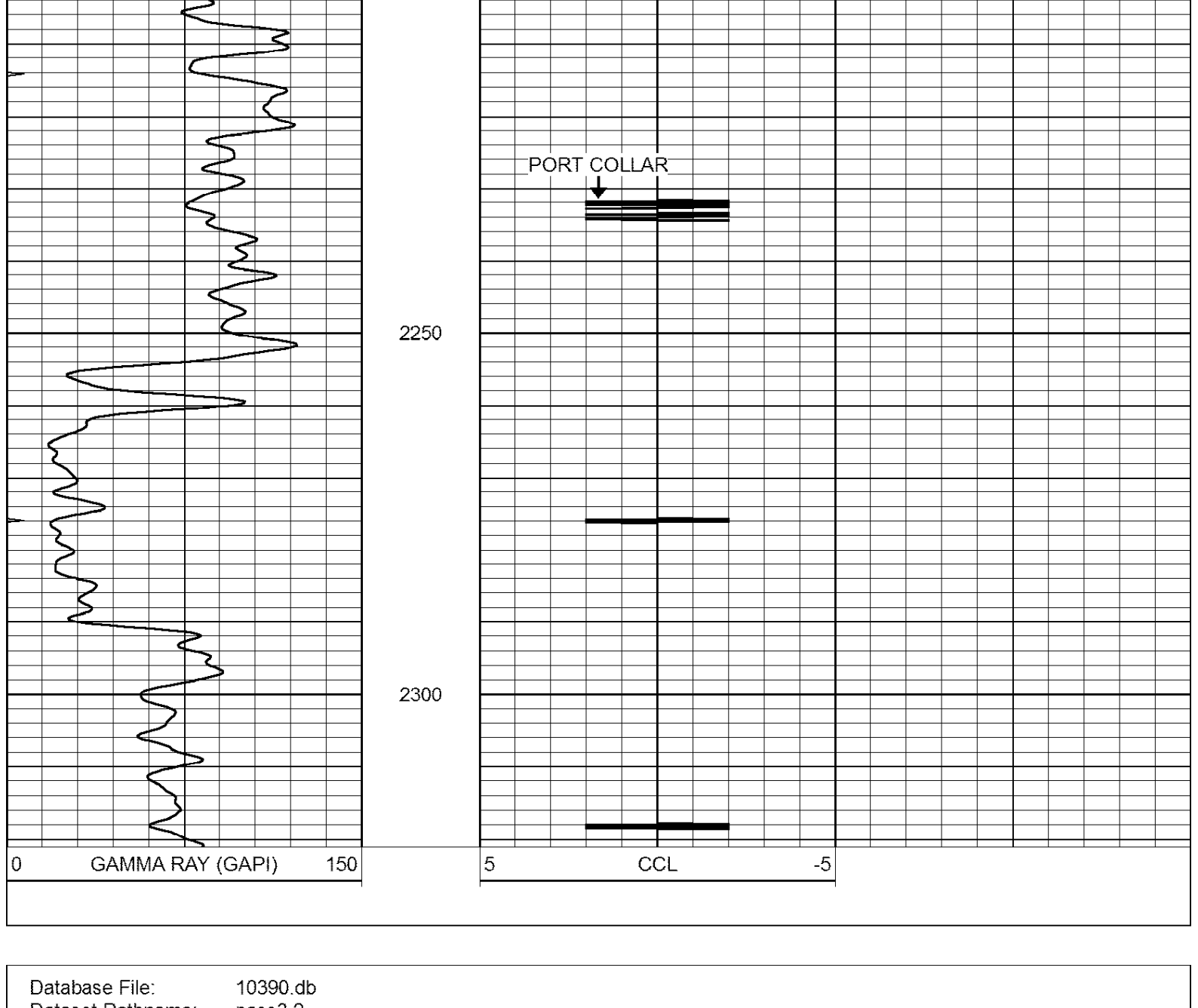
THANK YOU FOR USING SUPERIOR WELL SERVICES HAYS, KS (785) 628-6395
DIRECTIONS: GOVE, KS - 3 NORTH TO RD. V- 1/2 MILE EAST - SOUTH INTO



**COMPLETION
& PRODUCTION
SERVICES CO.**

PORT COLLAR

Database File: 10390.db
Dataset Pathname: pass4
Presentation Format: gr-n-ccl
Dataset Creation: Tue Dec 18 15:54:05 2012 by Log SOC 120430
Charted by: Depth in Feet scaled 1.240



Database File: 10390.db
Dataset Pathname: pass3.2
Presentation Format: gr-n-ccl
Dataset Creation: Wed Dec 19 10:09:29 2012
Charted by: Depth in Feet scaled 1.240

