

Company VESS OIL CORPORATION

Well KOOGLER S-107

Field ELDORADO

Country U.S.A.

State/Prv KANSAS

Location
330' FSL - 5' FEL
SEC. 30 TWP. 26S RGE. 5 E
BUTLER COUNTY

Other Services

Permanent Datum GROUND LEVEL Elevation 1324
Log Measured From KELLY BUSHING 6' A.G.L.
Drilling Measured From KELLY BUSHING

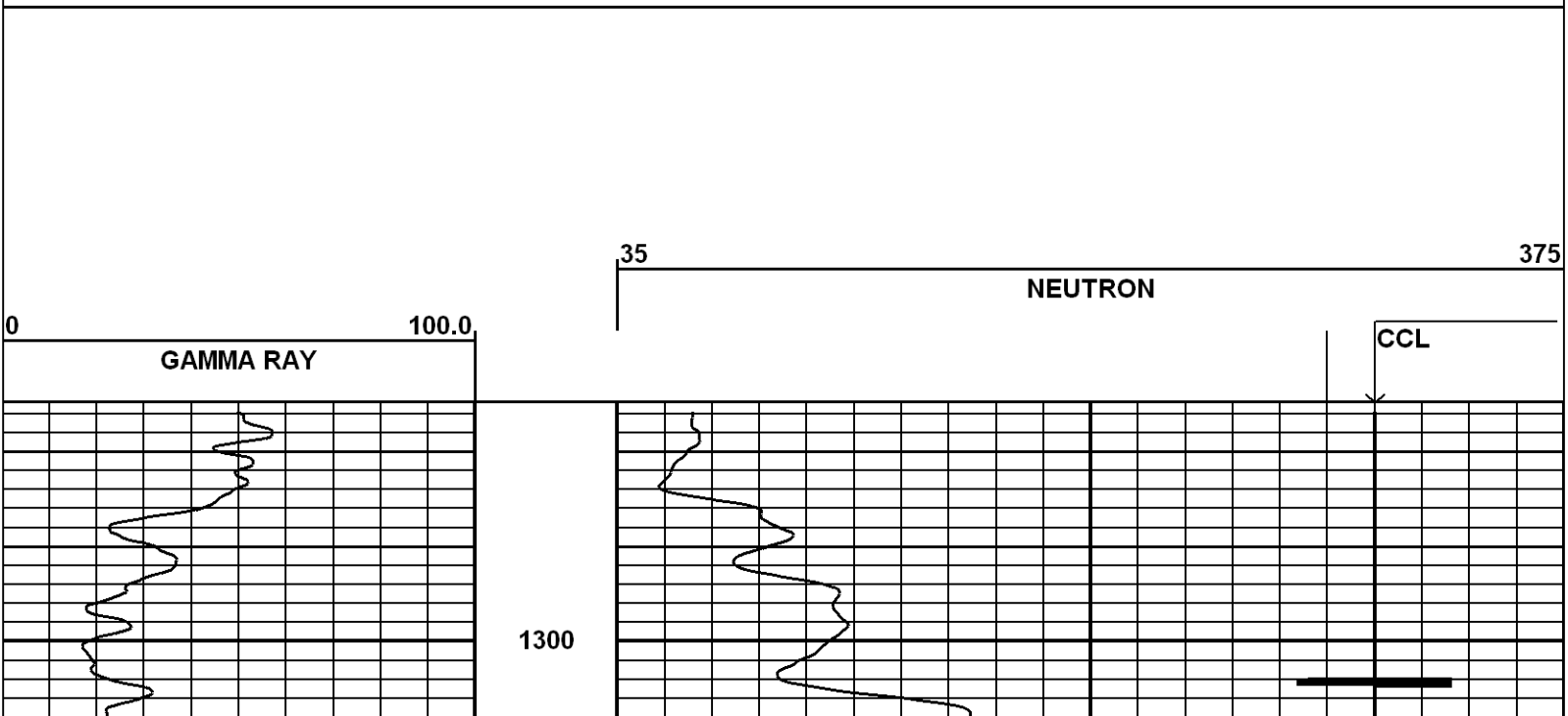
Elevation
K.B. 1330
G.L. 1324

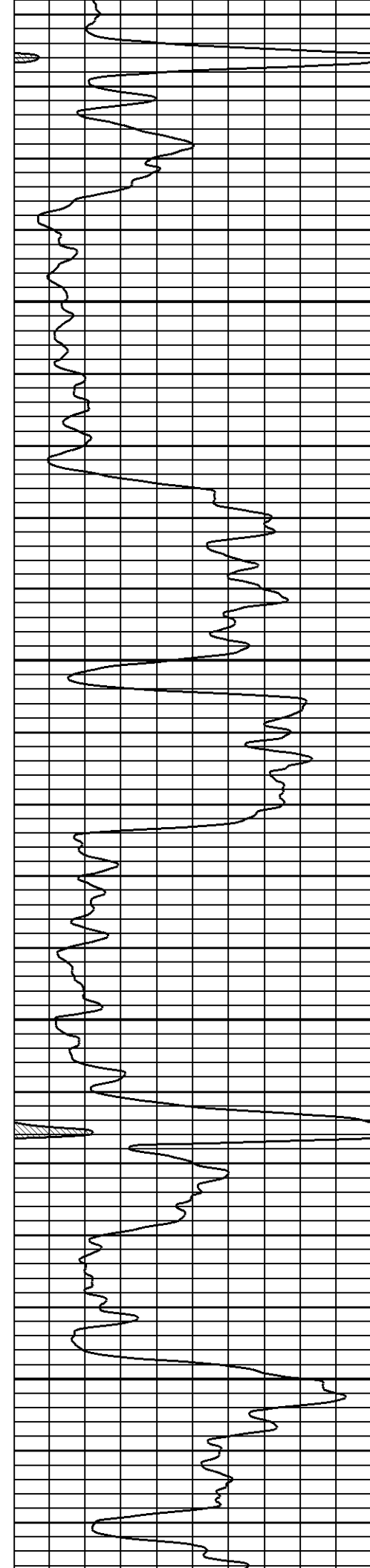
| | | | | | | | |
|------------------------|-------------|------|-------|--------|--------|-------|----|
| Date | 6-13-13 | | | | | | |
| Run Number | ONE | | | | | | |
| Depth Driller | 2634.00 | | | | | | |
| Depth Logger | 2635.75 | | | | | | |
| Bottom Logged Interval | 2634.75 | | | | | | |
| Top Log Interval | 1300 | | | | | | |
| Open Hole Size | | | | | | | |
| Type Fluid | | | | | | | |
| Density / Viscosity | | | | | | | |
| Max. Well Deviation | | | | | | | |
| Estimated Cement Top | | | | | | | |
| Time Well Ready | | | | | | | |
| Time Logger on Bottom | | | | | | | |
| Equipment Number | 103 | | | | | | |
| Location | ELDORADO | | | | | | |
| Recorded By | SULLIVAN | | | | | | |
| Witnessed By | CASEY COATS | | | | | | |
| Borehole Record | | | | | | | |
| Run Number | Bit | From | To | Size | Weight | From | To |
| | | | | | | | |
| Casing Record | | | SIZE | WEIGHT | FROM | TO | |
| Surface String | | | | | | | |
| Prot. String | | | | | | | |
| Production String | | | 5 1/2 | 15.5 | 0 | 2629+ | |
| Liner | | | | | | | |

RUN: Run #1
DIR: UP
DATE: 06/06/13
TIME: 08:11:46

Run #1

START: 2627.75ft
STOP: 1264.25ft
RES: 0.25ft
SCALE: 5"/100'



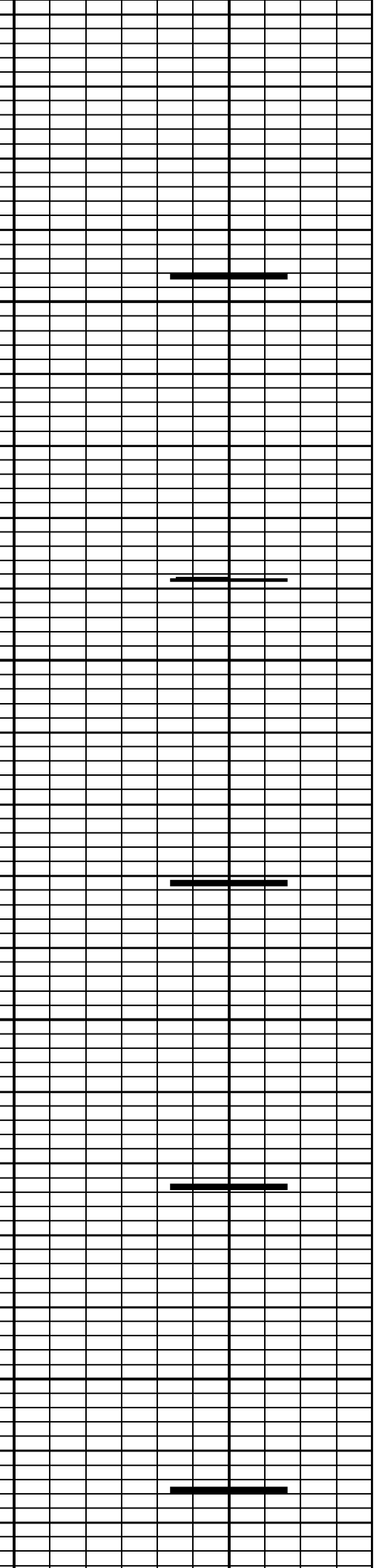
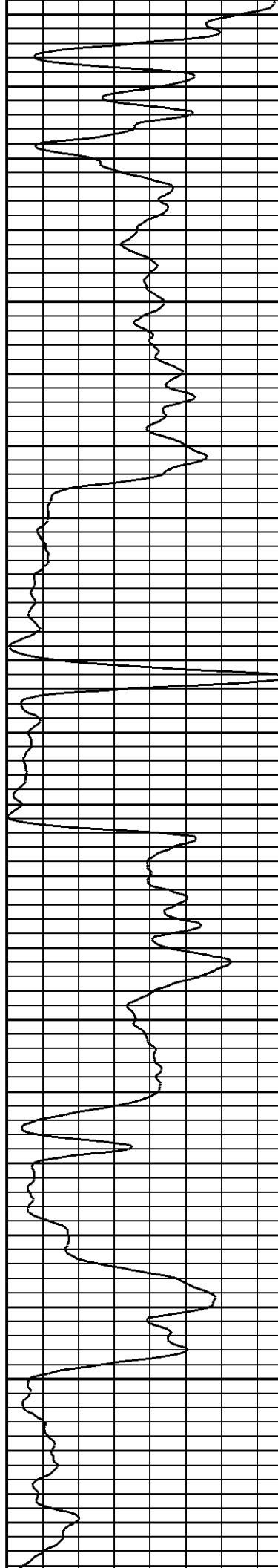


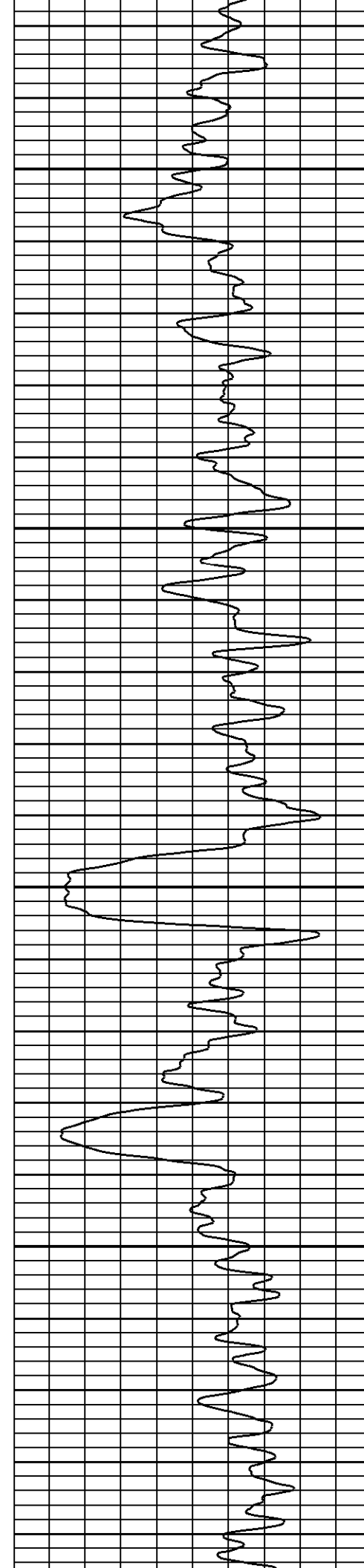
1350

1400

1450

1500



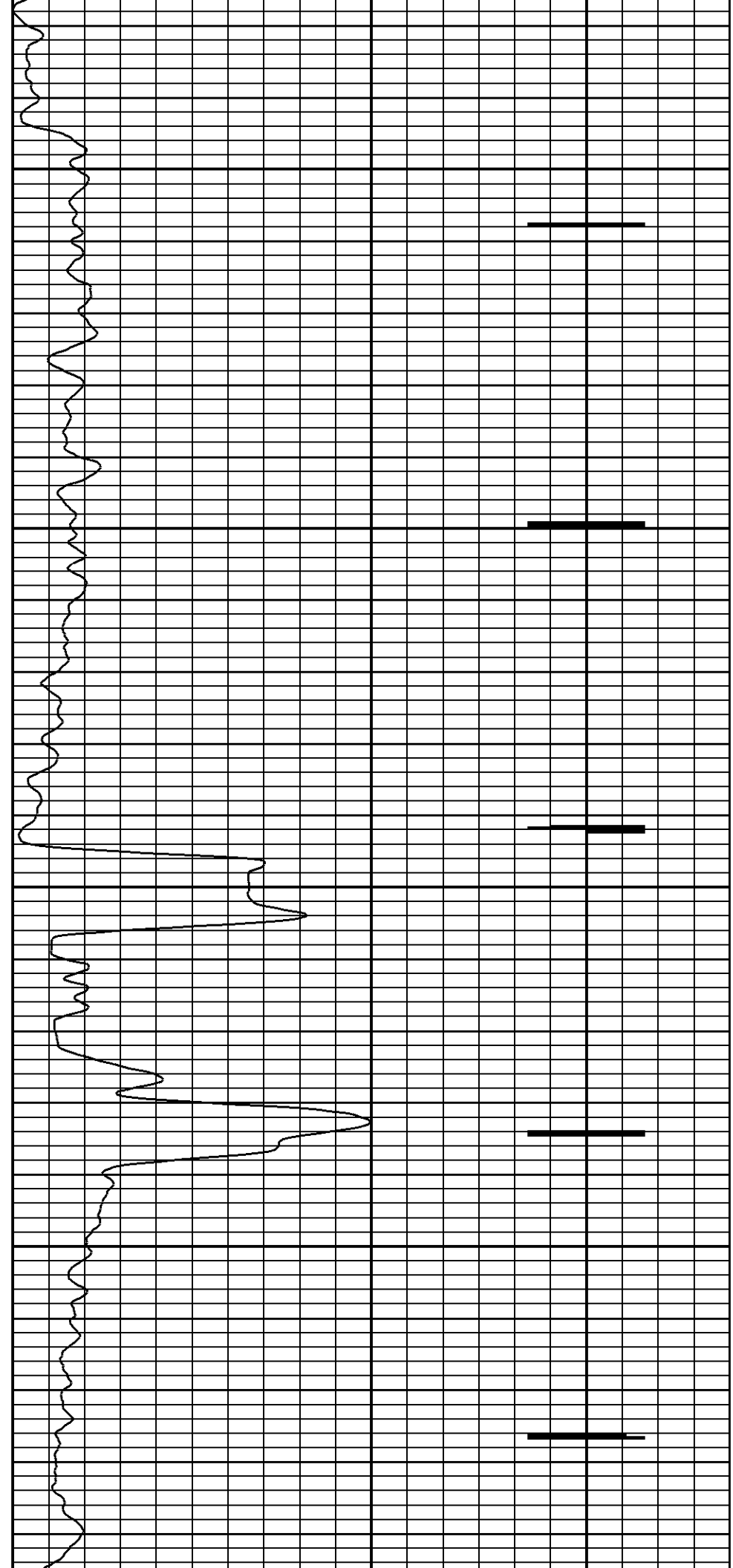


1550

1600

1650

1700

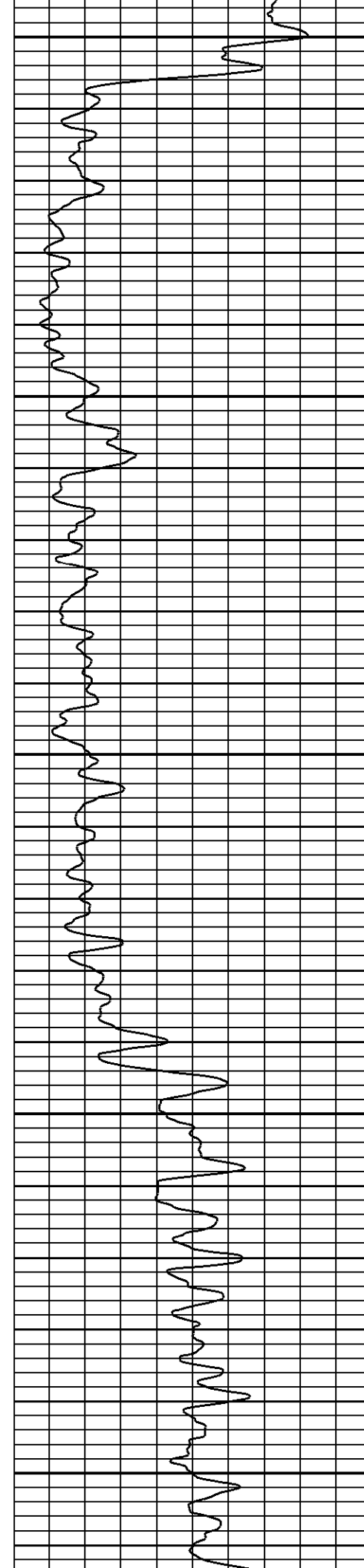


1550

1600

1650

1700



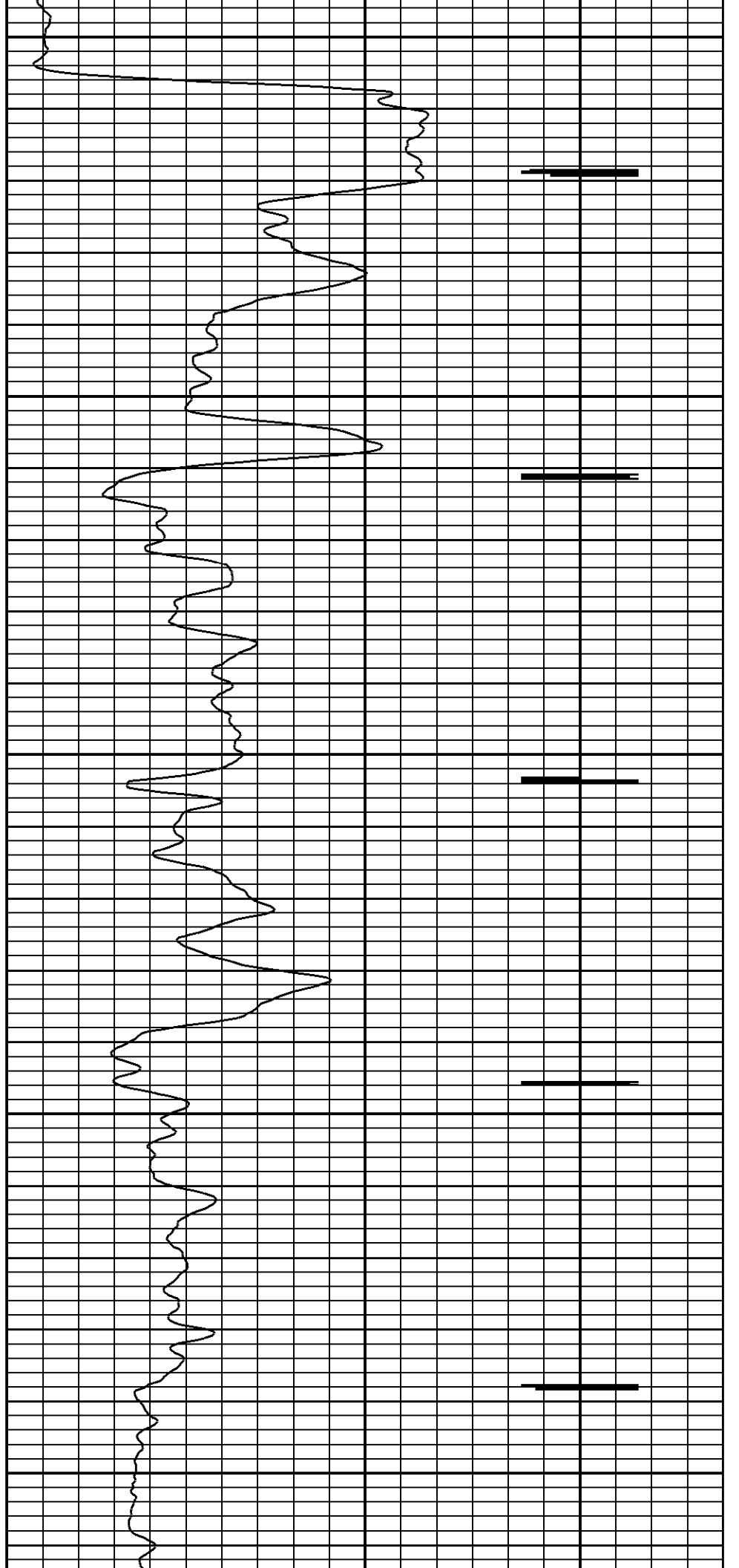
1750

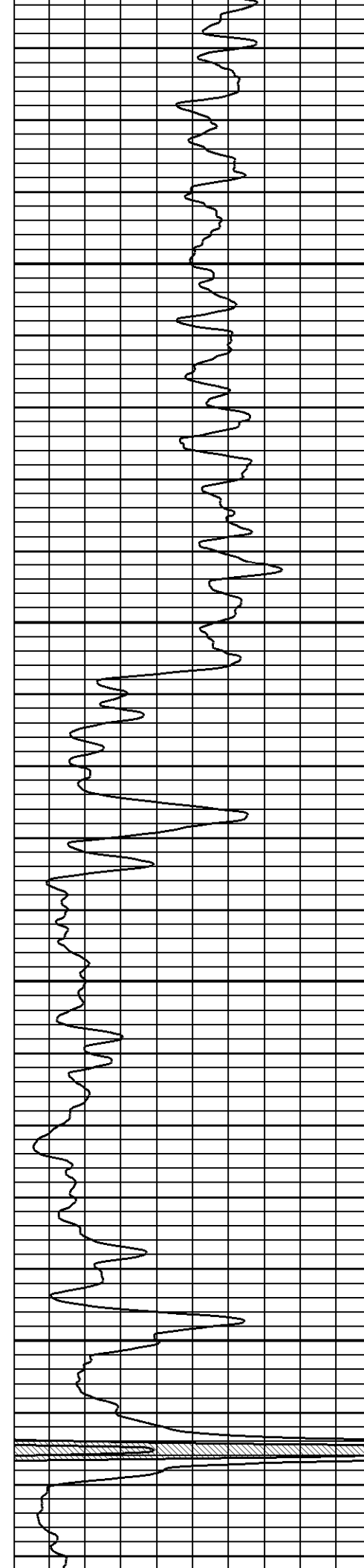
1800

1850

1900

1950



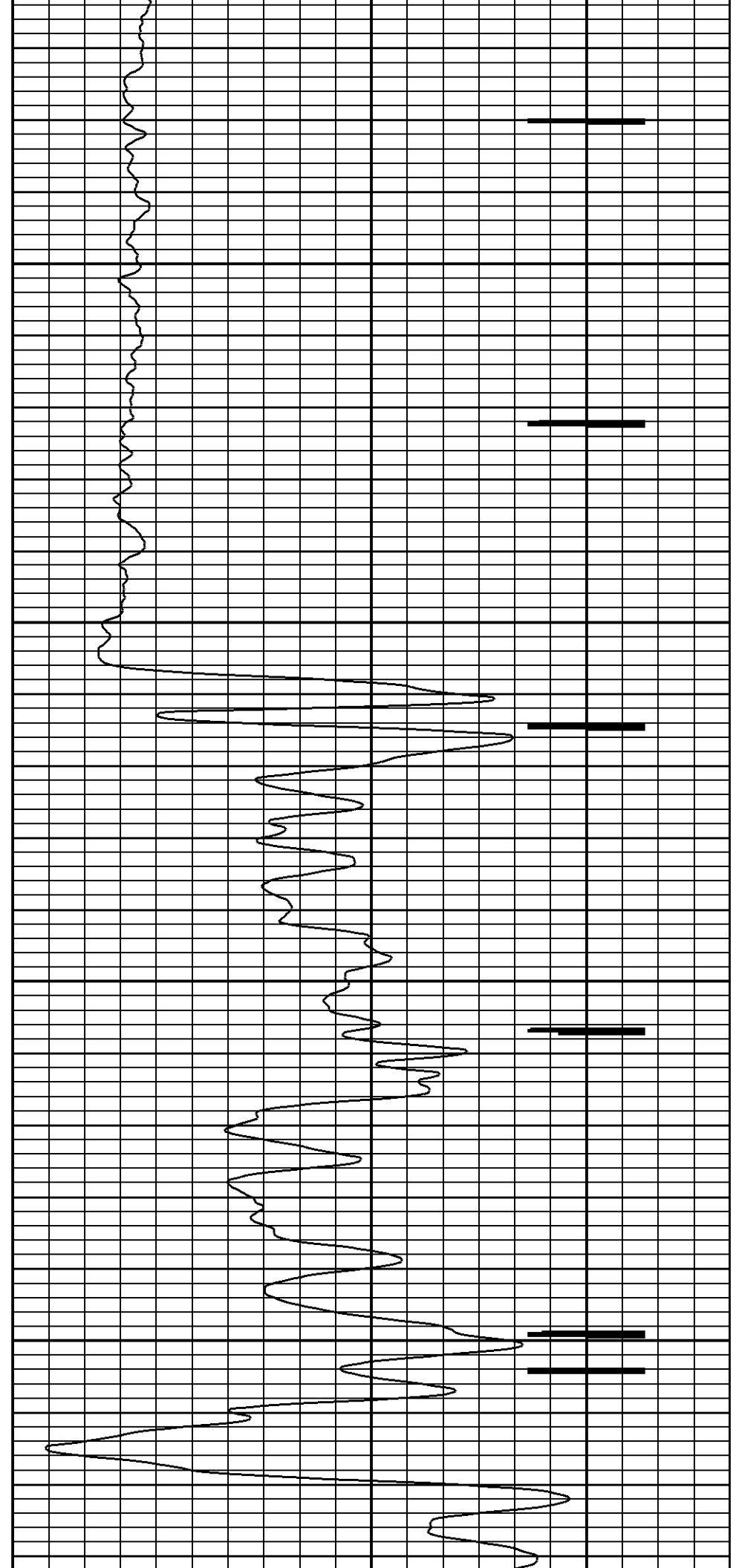


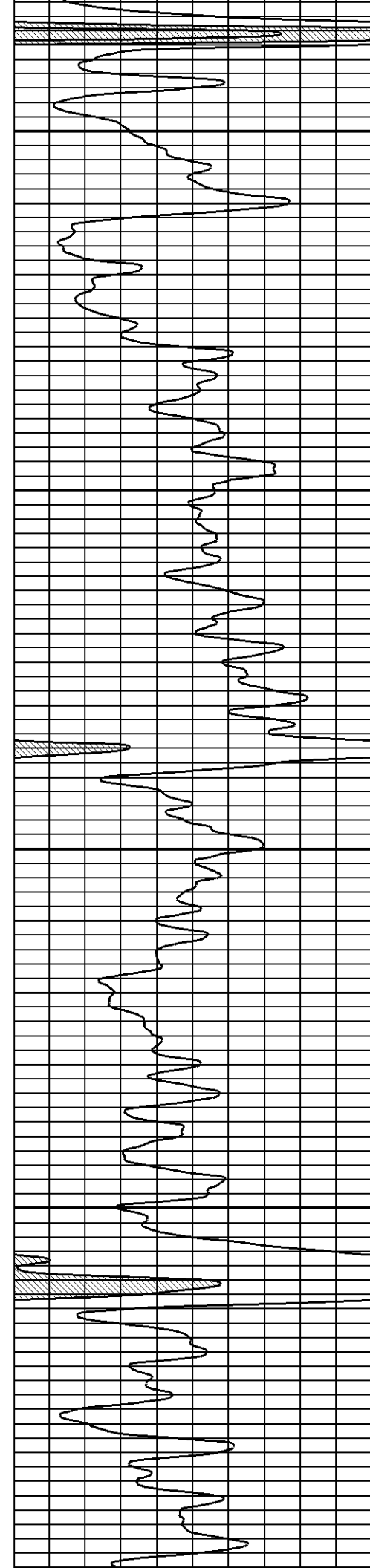
2000

2050

2100

2150





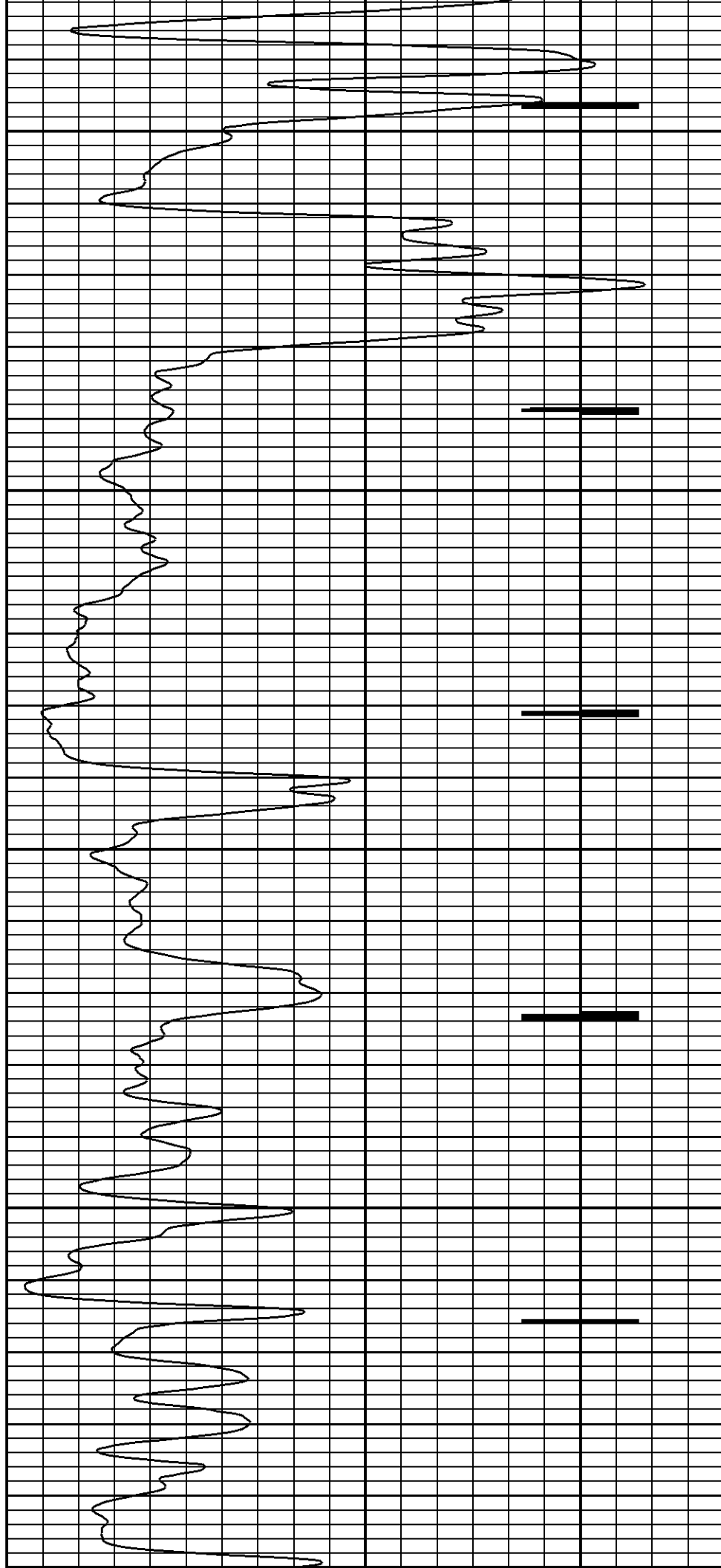
2200

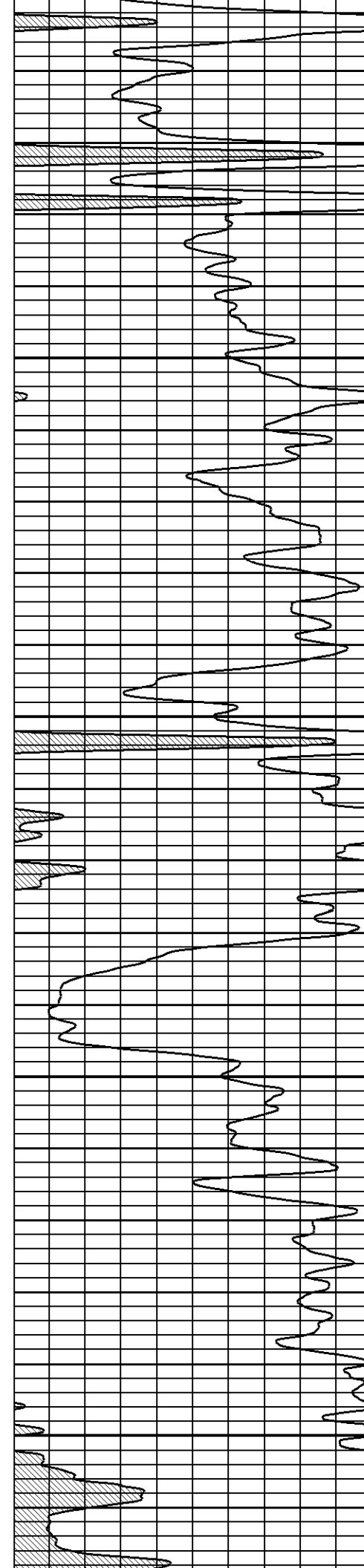
2250

2300

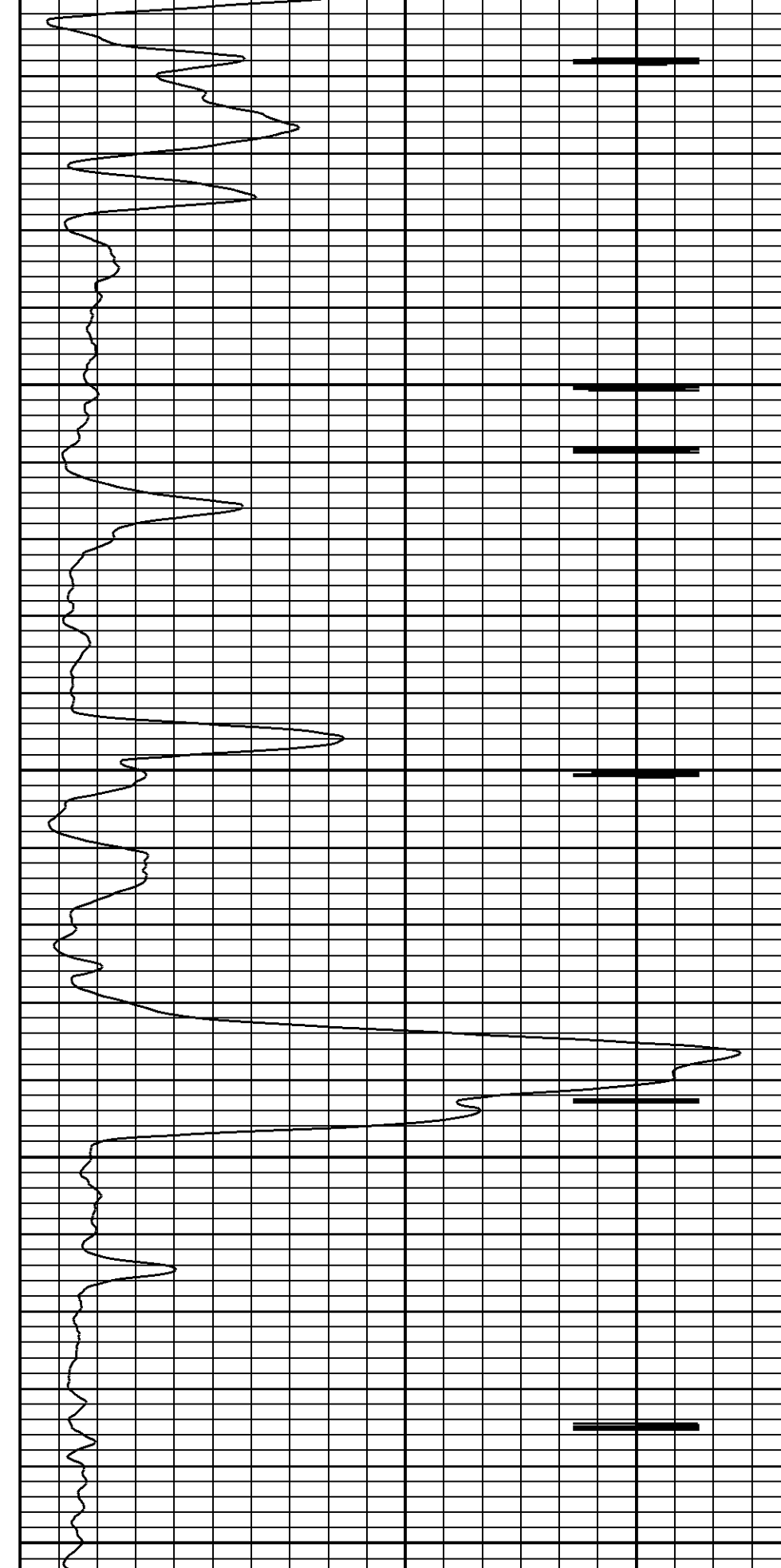
2350

2400

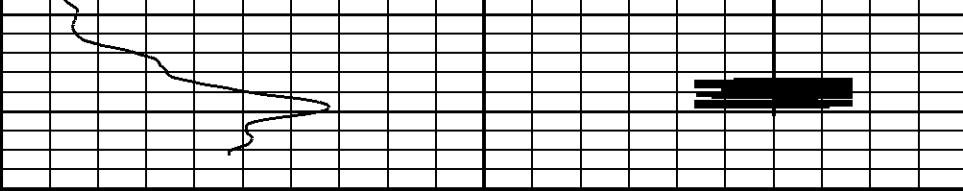
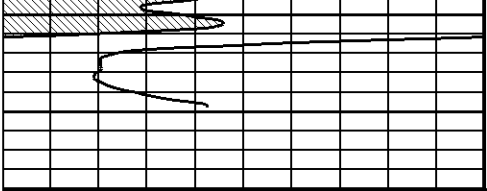




2400
2450
2500
2550
2600



40 30 20 15 10 5
NEUTRON POROSITY



0 100.0

GAMMA RAY

CCL

35

375

NEUTRON

RUN: Run #1
 DIR: UP
 DATE: 06/06/13
 TIME: 08:11:46

Run #1

START: 2627.75ft
 STOP: 1264.25ft
 RES: 0.25ft
 SCALE: 5"/100'

DYNA-LOG INC.

Company VESS OIL CORPORATION
 Well KOOGLER S-107
 Field ELDORADO
 Country U.S.A. State/Prv KANSAS