



CHANUTE, KANSAS

**GAMMA RAY  
NEUTRON  
COMPLETION LOG**

Company **COLT ENERGY, INC.**  
Well **MOLINE #MG1**  
Field **IOLA**  
County **ALLEN** State **KANSAS**

Location: **1485 FUL & 240 FWL  
NW NW SW NW**  
SEC **15** TWP **24S** RGE **18E**  
Elevation **951 EST**

APR # : **15-001-30700-00-00**  
Other Services

Permanant Datum **GL** Elevation **951 EST**  
Log Measured From **GL** K.B. **GL**  
Drilling Measured From **GL** D.F. **951 EST**

Date	8-19-13
Run Number	1 NW
Depth Driller	865
Depth Logger	862.4'
Top Log Interval	0
Bottom Logged Interval	862.4'
Fluid Level	128'
Type Fluid	OIL & WATER
Production Casing	4.5" @ 852'
Max. Recorded Temp.	
Estimated Cement Top	
Calculated Cement Top	
Amount & Type Cement	
Drilling Contractor	
Equipment Number	103
Location	SOLOMON, B.
Recorded By	ASHLOCK, R.
Witnessed By	

All interpretations are opinions based on inferences from electrical or other measurements and we cannot and do not guarantee the accuracy or correctness of any interpretation, and we shall not, except in the case of gross or willful negligence on our part, be liable or responsible for any loss, costs, damages, or expenses incurred or sustained by anyone resulting from any interpretation made by any of our officers, agents or employees. These interpretations are also subject to our general terms and conditions set out in our current Price Schedule.

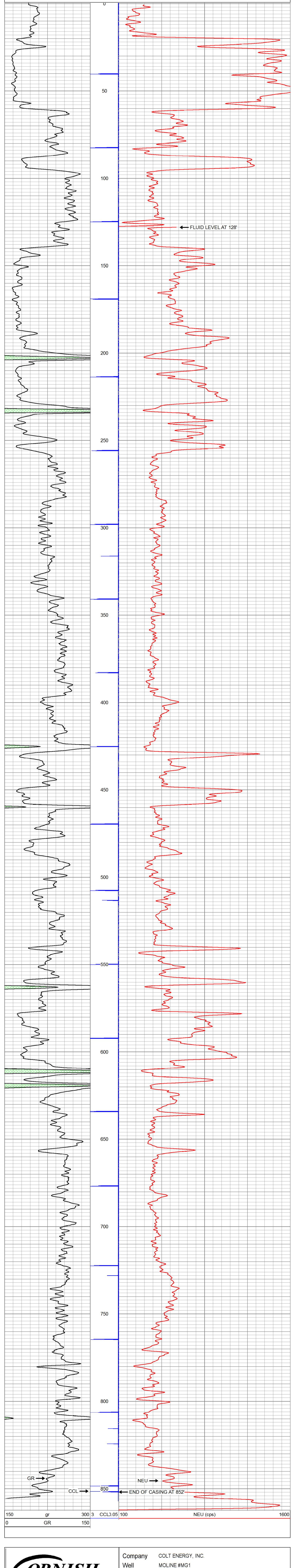
Comments

THANK YOU

Sensor	Offset (ft)	Schematic	Description	Len (ft)	OD (in)	Wt (lb)
GR	7.59	[Schematic diagram showing tool joint positions]	GR-TITAN_169 (TIT169_001) Titan 1 11/16" Gamma Ray	4.75	1.69	20.00
CCL	5.05		CCL-TITAN_169 (TIT169) Titan 1 11/16" Logging CCL	1.83	1.69	7.50
NEU	0.63		NEU-TITAN (TIT801) TITAN 1 11/16" Neutron	4.33	1.69	25.00

Dataset: moline #mg-1.db: field/well/run1/pass1  
Total Length: 10.92 ft  
Total Weight: 52.50 lb  
O.D.: 1.69 in

Database File: e:\moline #mg-1.db  
Dataset Pathname: pass1  
Presentation Format: gr-n-ccl  
Dataset Creation: Mon Aug 19 15:02:40 2013 by Log Std Casedhole 09061  
Charted by: Depth in Feet scaled 1.240



CHANUTE, KANSAS