



**GAMMA RAY
NEUTRON
COMPLETION LOG**

Company: VIVA INTERNATIONAL, INC.
Well: GLADES #V-38
Field: VERNON
County: WOODSON
State: KANSAS

Location: 825' FNL & 165' FNL
NW 34/36 NW 36/36
SEC 9 TWP 24S RGE 16E
Elevation: 1055' EST
D.F.: 1055' EST
G.L.: 1055' EST

Other Services: VIVA INTERNATIONAL, INC.
Company: VIVA INTERNATIONAL, INC.
Well: GLADES #V-38
Field: VERNON
County: WOODSON
State: KANSAS

Date: 4-3-13
Run Number: 1 NW
Depth: 1083.5'
Depth Diller: 1083.5'
Top Log Interval: 0
Bottom Logged Interval: 1083.5'
Fluid Level: FULL

Type Fluid: WATER
Production Casing: 2 7/8" @ TD @
Max. Record Temp.: @
Estimated Cement Top: @
Calculated Cement Top: @
Amount & Type Cement: @
Drilling Contractor: @
Equipment Number: 109
Location: SANBORN, G.
Recorded By: WEST, T.

Company	VIVA INTERNATIONAL, INC.
Well	GLADES #V-38
Field	VERNON
County	WOODSON
State	KANSAS
Location:	825' FNL & 165' FNL NW 34/36 NW 36/36 SEC 9 TWP 24S RGE 16E Elevation: 1055' EST D.F.: 1055' EST G.L.: 1055' EST
Other Services:	VIVA INTERNATIONAL, INC.
Date:	4-3-13
Run Number:	1 NW
Depth:	1083.5'
Depth Diller:	1083.5'
Top Log Interval:	0
Bottom Logged Interval:	1083.5'
Fluid Level:	FULL
Type Fluid:	WATER
Production Casing:	2 7/8" @ TD @
Max. Record Temp.:	@
Estimated Cement Top:	@
Calculated Cement Top:	@
Amount & Type Cement:	@
Drilling Contractor:	@
Equipment Number:	109
Location:	SANBORN, G.
Recorded By:	WEST, T.

All interpretations are opinions based on inferences from electrical or other measurements and we cannot and do not guarantee the accuracy or correctness of any interpretation, and we shall not, except in the case of gross or willful negligence on our part, be liable or responsible for any loss, costs, damages, or expenses incurred or sustained by anyone resulting from any interpretation made by any of our officers, agents or employees. These interpretations are also subject to our general terms and conditions set out in our current Price Schedule.

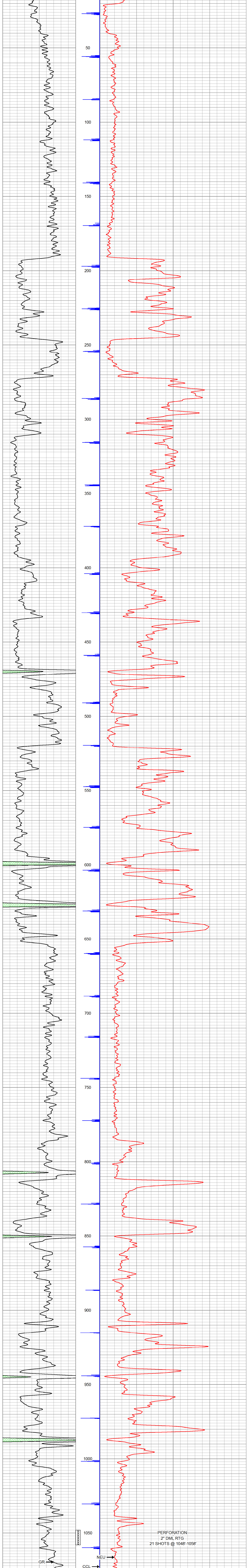
Comments: THANK YOU

Sensor	Offset (ft)	Schematic	Description	Len (ft)	OD (in)	Wt (lb)
GR	7.59		GR-TITAN 169 (TIT169_001) Titan 1 11/16" Gamma Ray	4.75	1.69	20.00
CCL	5.05		CCL-TITAN 169 (TIT169) Titan 1 11/16" Logging CCL	1.83	1.69	7.50
NEU	0.63		NEU-TITAN (TIT801) TITAN 1 11/16" Neutron	4.33	1.69	25.00

Dataset: glades #v-38.db; field/well/run1/pass1
Total Length: 10.92 ft
Total Weight: 52.50 lb
O.D.: 1.69 in

Database File: e:\glades #v-38.db
Dataset Pathname: pass1
Presentation Format: gr-n-ccl
Dataset Creation: Wed Apr 03 10:36:41 2013 by Log Std Casedhole 09061
Charted by: Depth in Feet scaled 1:240

150	gr	300	3	CCL.05	200	NEU (cps)	1800
0	GR	150					



150	gr	300	3	CCL.05	200	NEU (cps)	1800
0	GR	150					

PERFORATION
2" DML RTG
21 SHOTS @ 1048'-1058'

Company	VIVA INTERNATIONAL, INC.
Well	GLADES #V-38
Field	VERNON
County	WOODSON SEC. 9 TWP. 24S RGE. 16E
State	KANSAS
Date	4-3-13

