



GAMMA RAY NEUTRON COMPLETION LOG

Company: VIVA INTERNATIONAL, INC.
Well: GLADES #V-43
Field: VERNON
County: WOODSON
State: KANSAS

Company: VIVA INTERNATIONAL, INC.
Well: GLADES #V-43
Field: VERNON
County: WOODSON
State: KANSAS

Location: 1485 FNL & 495 FNL
NE NW SW NW
SEC 9 TWP 24S RGE 16E
Elevation: 1042 EST
D.F.: 1042 EST

Date: 4-3-13
Run Number: 1 NW
Depth: 1085.7
Depth Logger: 1085.7

Top Log Interval: 0
Bottom Logged Interval: 1085.7
Fluid Level: FULL

Type Fluid: WATER
Production Casing: 2 7/8" @ TD @ @

Max. Recorded Temp.:
Estimated Cement Top:
Calculated Cement Top:
Amount & Type Cement:
Drilling Contractor:
Equipment Number:
Location:
Recorded By: SANBORN, G.
Witnessed By: WEST, T.

<<< Fold Here >>>

All interpretations are opinions based on inferences from electrical or other measurements and we cannot and do not guarantee the accuracy or correctness of any interpretation, and we shall not, except in the case of gross or willful negligence on our part, be liable or responsible for any loss, costs, damages, or expenses incurred or sustained by anyone resulting from any interpretation made by any of our officers, agents or employees. These interpretations are also subject to our general terms and conditions set out in our current Price Schedule.

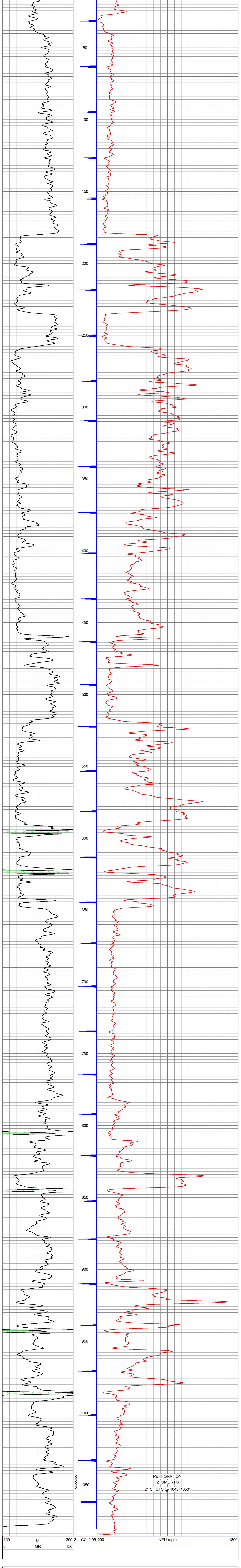
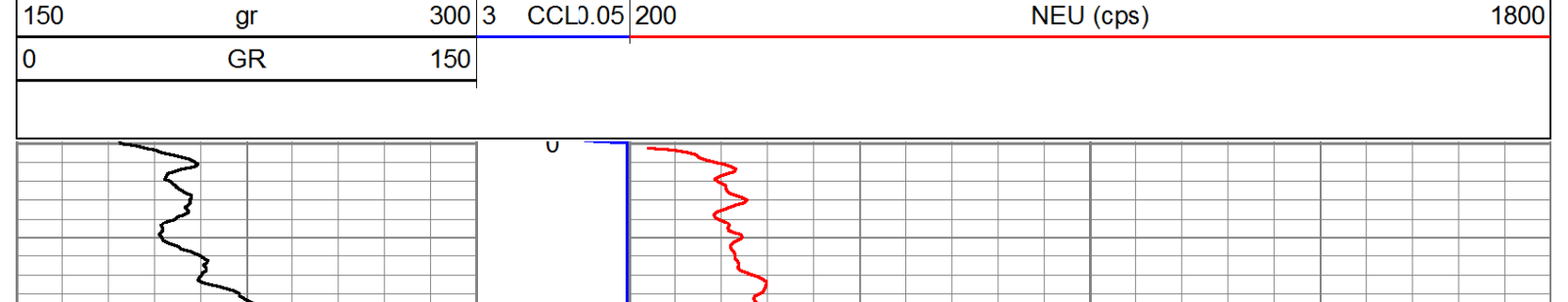
Comments

THANK YOU

Sensor	Offset (ft)	Schematic	Description	Len (ft)	OD (in)	Wt (lb)
GR	7.59		GR-TITAN_169 (TIT169_001) Titan 1 11/16" Gamma Ray	4.75	1.69	20.00
CCL	5.05		CCL-TITAN_169 (TIT169) Titan 1 11/16" Logging CCL	1.83	1.69	7.50
NEU	0.63		NEU-TITAN (TIT801) TITAN 1 11/16" Neutron	4.33	1.69	25.00

Dataset: glades #v-43.db; field/well/run1/pass1
Total Length: 10.92 ft
Total Weight: 52.50 lb
O.D.: 1.69 in

Database File: e:\glades #v-43.db
Dataset Pathname: pass1
Presentation Format: gr-n-ccl
Dataset Creation: Wed Apr 03 12:37:30 2013 by Log Std Casedhole 09061
Charted by: Depth in Feet scaled 1:240



PERFORATION
2" DMLRTG
21 SHOTS @ 1043'-1053'