



**GAMMA RAY
NEUTRON
COMPLETION LOG**

VIVA INTERNATIONAL, INC.

Company: VIVA INTERNATIONAL, INC.
Well: GLADES #V-36
Field: VERNON
County: WOODSON
State: KANSAS

Location: 2145' FSL & 825' FEL
SE NW/4E SE
API #: 15-207-28416-00-00
Other Services

Permanent Datum: SEC 8 TWP 24S RGE 16E
Log Measured From: GL
Drilling Measured From: GL
Elevation: 1042ESL
K_a: 1042EST
D.F.: 1042EST

Date: 12-18-12
Run Number: 1 NW
Depth Logger: 1089.3'

Top Log Interval: 0
Bottom Logged Interval: 1089.3'
Fluid Level: FULL

Type Fluid: WATER
Production Casing: 2 7/8" @ TD
Max. Record Temp.:
Estimated Cement Top:
Calculated Cement Top:
Amount & Type Cement:
Drilling Contractor:
Equipment Number: 109
Location: SANBORN, G.
Recorded By: WEST, T.
Witnessed By:

<<< Fold Here >>>

All interpretations are opinions based on inferences from electrical or other measurements and we cannot and do not guarantee the accuracy or correctness of any interpretation, and we shall not, except in the case of gross or willful negligence on our part, be liable or responsible for any loss, costs, damages, or expenses incurred or sustained by anyone resulting from any interpretation made by any of our officers, agents or employees. These interpretations are also subject to our general terms and conditions set out in our current Price Schedule.

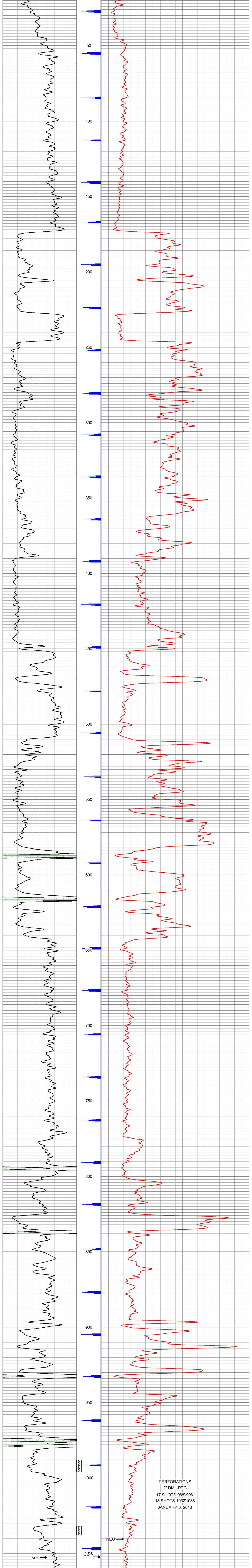
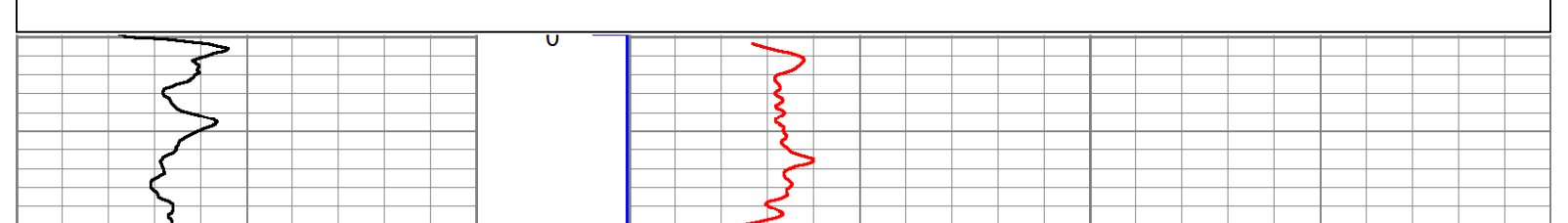
Comments

THANK YOU

Sensor	Offset (ft)	Schematic	Description	Len (ft)	OD (in)	Wt (lb)
GR	7.59		GR-TITAN_169 (TIT169_001) Titan 1 11/16" Gamma Ray	4.75	1.69	20.00
CCL	5.05		CCL-TITAN_169 (TIT169) Titan 1 11/16" Logging CCL	1.83	1.69	7.50
NEU	0.63		NEU-TITAN (TIT801) TITAN 1 11/16" Neutron	4.33	1.69	25.00

Dataset: glades #v-36.db; field/well/run1/pass1
Total Length: 10.92 ft
Total Weight: 52.50 lb
O.D.: 1.69 in

Database File: p:\logs\viva international, inc\glades #v-36\glades #v-36.db
Dataset Pathname: pass1
Presentation Format: gr-n-ccl
Dataset Creation: Tue Dec 18 12:23:20 2012 by Log Std Casedhole 09061
Charted by: Depth in Feet scaled 1.240



PERFORATIONS
2" DML-RTG
17 SHOTS 988'-996'
13 SHOTS 1032'1038'
JANUARY 3, 2013

