



**GAMMA RAY  
NEUTRON  
COMPLETION LOG**

VIVA INTERNATIONAL, INC.

Company	VIVA INTERNATIONAL, INC.	Well	GLADES #V-44	Field	VERNON	County	WOODSON	State	KANSAS
Location:	SEC 9 TWP 24S RGE 16E	Log Measured From	GL	Drilling Measured From	GL	Elevation	1048 EST	GL	1048 EST
API #:	15-207-28522-00-00	Other Services							
Run Number	1 NW	Date	4-3-13	Depth Logger	1078.5'	Top Log Interval	0	Bottom Logged Interval	1078.5'
Production Casings	WATER	Type Fluid		Max. Recorded Temp.	27.8'	Estimated Cement Top		Calculated Cement Top	
Amount & Type Cement		Drilling Contractor		Equipment Number	109	Location	SANBORN, G.	Recorded By	WEST, T.

<<< Fold Here >>>

All interpretations are opinions based on inferences from electrical or other measurements and we cannot and do not guarantee the accuracy or correctness of any interpretation, and we shall not, except in the case of gross or willful negligence on our part, be liable or responsible for any loss, costs, damages, or expenses incurred or sustained by anyone resulting from any interpretation made by any of our officers, agents or employees. These interpretations are also subject to our general terms and conditions set out in our current Price Schedule.

Comments

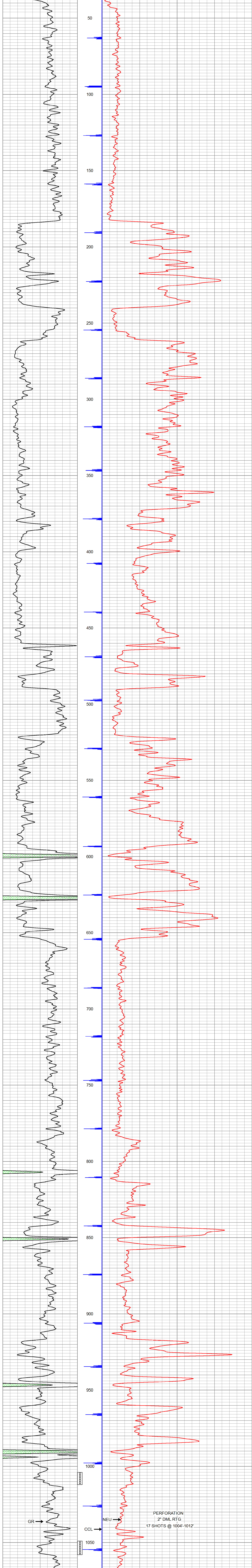
THANK YOU

Sensor	Offset (ft)	Schematic	Description	Len (ft)	OD (in)	Wt (lb)
GR	7.59		GR-TITAN_169 (TIT169_001) Titan 1 11/16" Gamma Ray	4.75	1.69	20.00
CCL	5.05		CCL-TITAN_169 (TIT169) Titan 1 11/16" Logging CCL	1.83	1.69	7.50
NEU	0.63		NEU-TITAN (TIT801) TITAN 1 11/16" Neutron	4.33	1.69	25.00

Dataset: glades #v-44 db; field/well/run1/pass1  
 Total Length: 10.92 ft  
 Total Weight: 52.50 lb  
 O.D.: 1.69 in

Database File: e:\glades #v-44.db  
 Dataset Pathname: pass1  
 Presentation Format: gr-n-ccl  
 Dataset Creation: Wed Apr 03 08:43:06 2013 by Log Std Casedhole 09061  
 Charted by: Depth in Feet scaled 1:240

150	gr	300	3	CCL.05	200	NEU (cps)	1800
0	GR	150					



150	gr	300	3	CCL.05	200	NEU (cps)	1800
0	GR	150					