

**MIDWEST SURVEYS**  
 LOGGING - PERFORATING - CONSULTING SERVICES  
 P.O. Box 69, Osawatomie, KS 66064  
 913 / 755 - 2128

**GAMMA RAY / NEUTRON / CCL**

File No. \_\_\_\_\_

Company **Altavista Energy, Inc.**

Well **Williams No. A-1**

Field **Baldwin**

County **Franklin**

State **Kansas**

Location **1475 FSL & 5100 FEL**

**SWS-SW-MW-SW**

Sec. **24** Twp. **15S** Rge. **20E**

Permanent Datum **GL** Elevation **1048'**

Log Measured From **GL** Elevation **1048'**

Drilling Measured From **GL** Elevation **1048'**

Date **07-22-2013**

Run Number **One**

Depth Driller **900.0**

Depth Logger **841.3**

Bottom Logged Interval **840.3**

Top Log Interval **20.0**

Fluid Level **Full**

Type Fluid **Water**

Density / Viscosity **NA**

Salinity - PPM Cl **NA**

Max Recorded Temp **NA**

Estimated Cement Top **0.0**

Equipment No. **102** Location **Osawatomie**

Recorded By **Gary Windsch**

Witnessed By **Doug Evans**

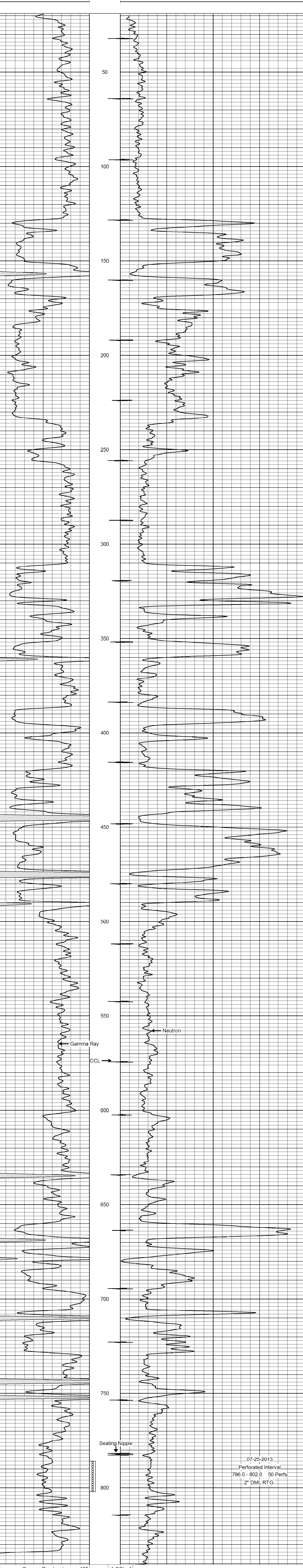
BORE-HOLE RECORD		CASING RECORD		TO		
RUN No.	BIT FROM	TO	SIZE	WGT.	FROM	TO
One	9.875"	21.0	7.00"	17.0 #	0.0	21.0
Two	5.825"	21.0	2.875"	6.5 #	0.0	874.95
				Barite	Sr	At

All interpretations are opinions based on inferences from electrical or other measurements and we cannot and do not guarantee the accuracy or correctness of any interpretation, and we shall not, except in the case of gross or willful negligence on our part, be liable or responsible for any loss, costs, damages, or expenses incurred or sustained by anyone resulting from any interpretation made by any of our officers, agents or employees. These interpretations are also subject to our general terms and conditions set out in our current Price Schedule.

Comments

Drilling Contractor :  
 Town Oilfield Services, Inc.

Database File: williams1a.db  
 Dataset Pathname: pass1  
 Presentation Format: gr-n-ccl  
 Dataset Creation: Mon Jul 22 15:12:12 2013 by Log SCH 111116  
 Charted by: Depth in Feet scaled 1:240



07-25-2013  
 Perforated Interval  
 786.0 - 802.0 50 Perfs  
 2" DML RTG