



**MIDWEST SURVEYS**  
 LOGGING - PERFORATING - CASING LOG SERVICES  
 P.O. Box 68, Osawatomie, KS 66064  
 913 / 735 - 2128

**GAMMA RAY / NEUTRON / CCL**

File No. Company **Altavista Energy, Inc.**  
 Well **Williams No. A-5**

Field **Baldwin**  
 County **Franklin** State **Kansas**

Location **1795 FSL & 4120' FEL**  
**NE-SE-NW-SW**

Other Services **Perforate**

Sec **24** Typ **15S** Rge **20e**  
 Permanent Datum **GL** Elevation **NA**  
 Log Measured From **GL** K.B. NA  
 Drilling Measured From **GL** D.F. NA  
**GL** NA

Date **07-15-2013**

Run Number **One**

Depth Driller **880.0**

Depth Logger **818.7**

Bottom Logged Interval **816.7**

Top Log Interval **200.0**

Fluid Level **Full**

Type Fluid **Water**

Density / Viscosity **NA**

Salinity - PPM Cl **NA**

BOREHOLE RECORD		CASING RECORD					
NO.	BIT	FROM	TO	SIZE	WGHT	FROM	TO
One	9.875"	0.0	20.0	7.00	17.0 #	0.0	20.0
Two	5.625"	20.0	890.0	2.875"	6.5 #	0.0	853.65
				Baffle	Set	At	823.80

Recorded By **Steve Mandisch** Location **107 Osawatome**

Addressed By **Dequg Evans**

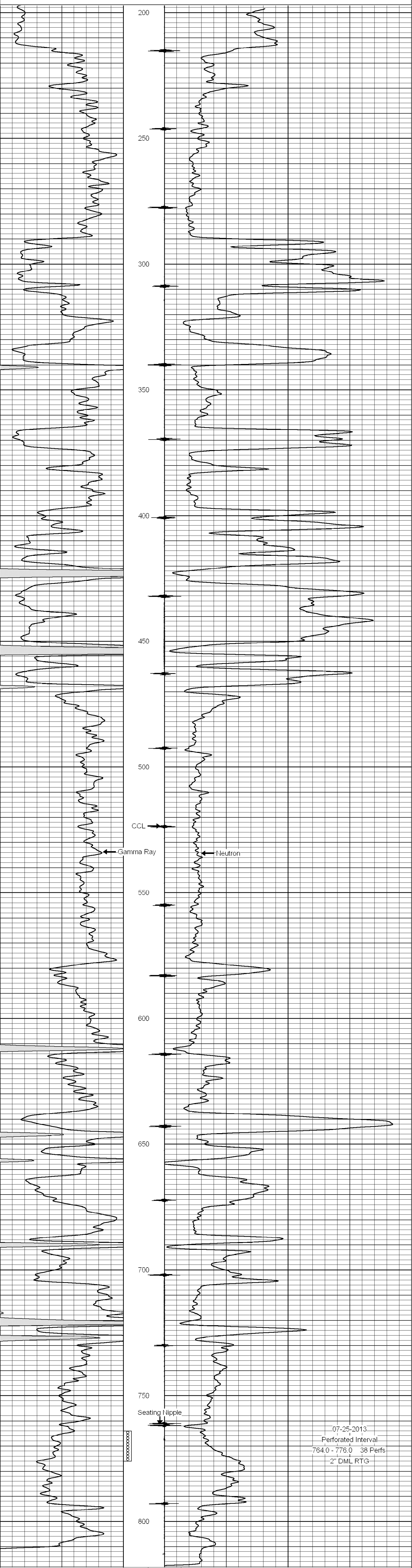
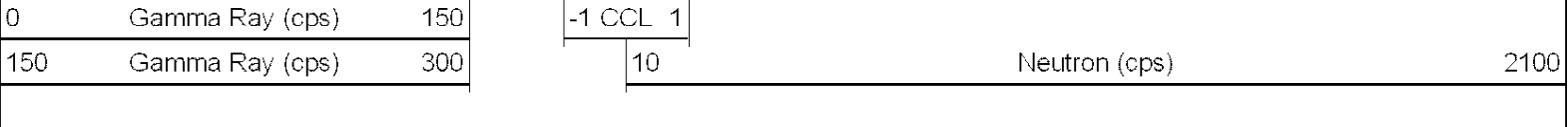
<<< Fold Here >>>

All interpretations are opinions based on inferences from electrical or other measurements and we cannot and do not guarantee the accuracy or correctness of any interpretation, and we shall not, except in the case of gross or willful negligence on our part, be liable or responsible for any loss, costs, damages, or expenses incurred or sustained by anyone resulting from any interpretation made by any of our officers, agents or employees. These interpretations are also subject to our general terms and conditions set out in our current Price Schedule.

**Comments**

Drilling Contractor :  
**Town Oilfield Services, Inc.**

Database File: williams5a.db  
 Dataset Pathname: pass1  
 Presentation Format: gr-n-ccl  
 Dataset Creation: Mon Jul 15 14:19:57 2013 by Log SCH 111116  
 Charted by: Depth in Feet scaled 1:240



07-25-2013  
 Perforated Interval:  
 764.0 - 776.0 38 Perfs  
 2" DML RTG

