



Dual Compensated Porosity Log

Pioneer Energy Services

API No.

15-065-23,866-00-00

Company **H&C Oil Operating, Inc.**

Well **Workman Trust No. 13-1**

Field **Wildcat**

County **Graham**

State **Kansas**

Location

990' FNL & 2,310' FEL

Other Services
DILMEL

Sec: 13

Twp: 6S

Rge: 24W

Elevation 2459

K.B. 2464

Ground Level
Kelly Bushing

5 Ft. Above Perm. Datum

D.F. 2459

Date

10/28/2012

Run Number

One

Type Log

CNL / CDL

Depth Driller

3950

Depth Logger

3949

Bottom Logged Interval

3928

Top Logged Interval

3350

Type Fluid In Hole

Chemical

Salinity, PPM CL

2000

Density Level

9.2

Max. Rec. Temp. F

Full

Operating Rig Time

116

Equipment -- Location

4 Hours

Recorded By

108 Hays

Witnessed By

J. Long

Witnessed By

Marc Downing

Witnessed By

Marc Downing

Witnessed By

Marc Downing

Witnessed By

Marc Downing

Witnessed By

Marc Downing

Witnessed By

Marc Downing

Witnessed By

Marc Downing

Witnessed By

Marc Downing

Run No.

Bit

From

To

Size

Wgt.

From

To

One

12.25

00

280

8.625

23#

00

280

Two

7.875

280

TD

<<< Fold Here >>>

All interpretations are opinions based on inferences from electrical or other measurements and we cannot and do not guarantee the accuracy or correctness of any interpretation, and we shall not, except in the case of gross or willful negligence on our part, be liable or responsible for any loss, costs, damages, or expenses incurred or sustained by anyone resulting from any interpretation made by any of our officers, agents or employees. These interpretations are also subject to our general terms and conditions set out in our current Price Schedule.

Comments

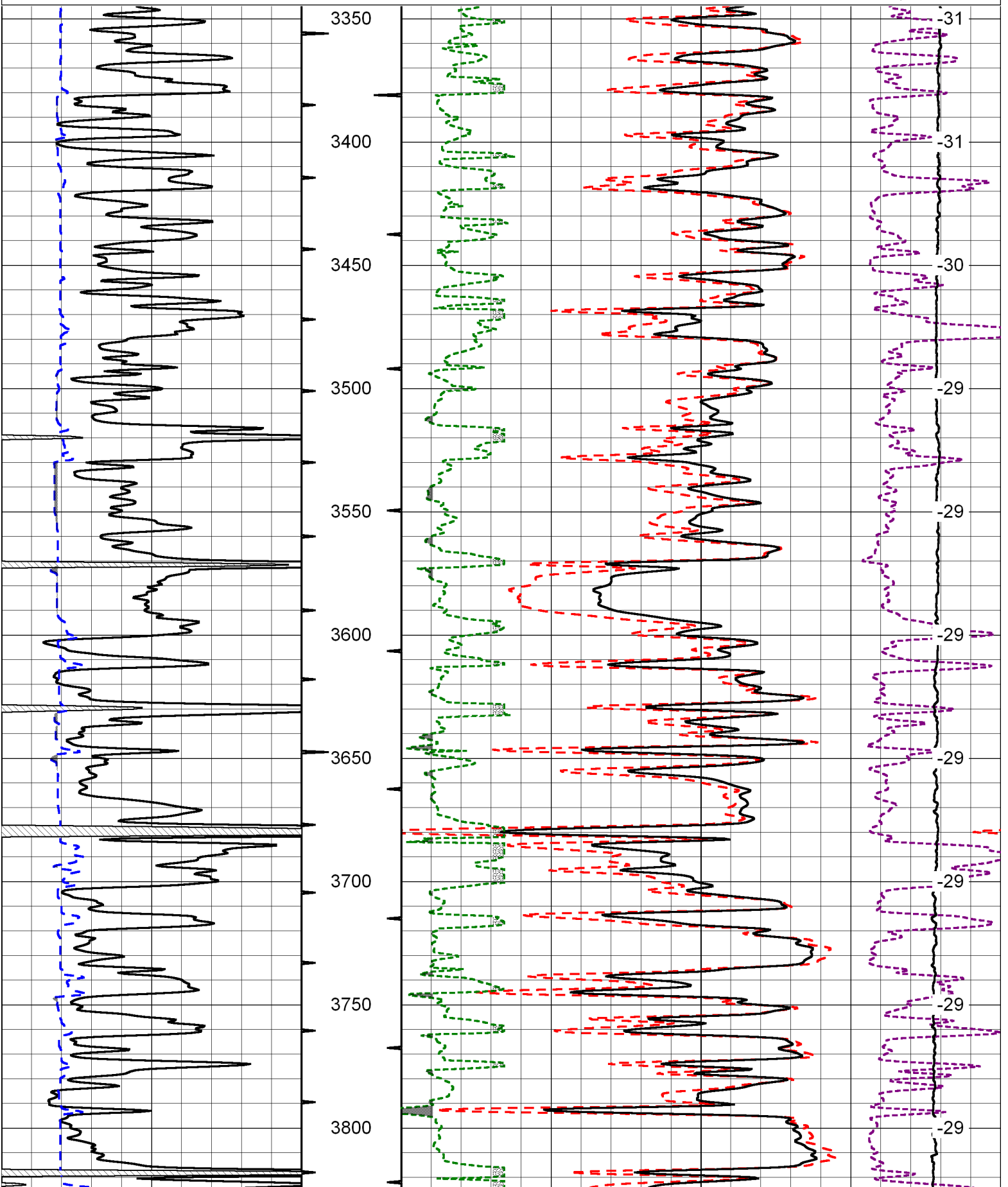
Thank you for using Log-Tech, Inc.
(785) 625-3858

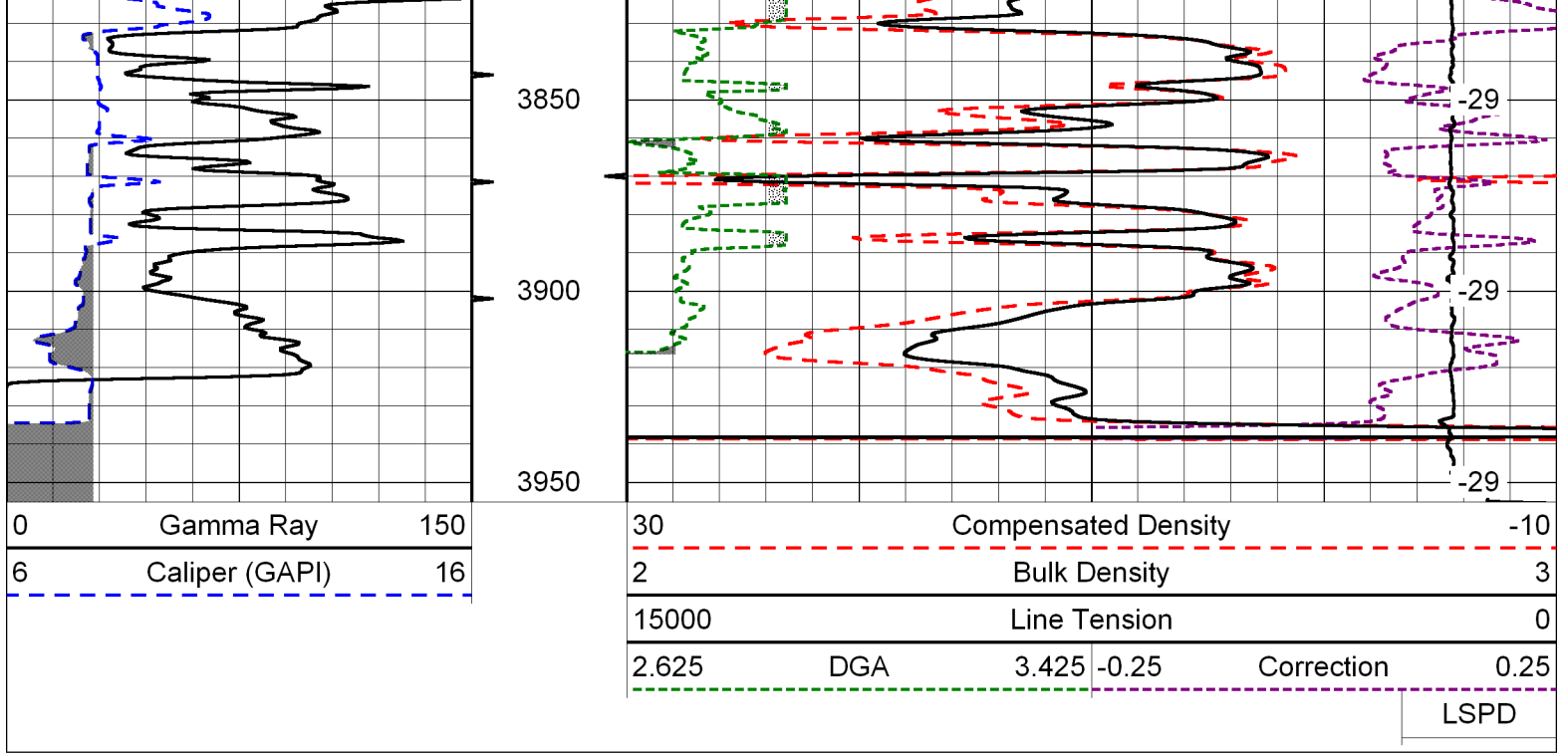
Hill City, 12 North to CC Road, 5 1/2 West, South Into

Database File: h&c_workmantrust_13-1hd.db
Dataset Pathname: dil/hcstck
Presentation Format: cdl
Dataset Creation: Sun Oct 28 04:14:08 2012
Charted by: Depth in Feet scaled 1:600

0	Gamma Ray	150
6	Caliper (GAPI)	16

30	Compensated Density		-10
2	Bulk Density		3
15000	Line Tension		0
2.625	DGA	3.425	-0.25
			Correction
			0.25
LSPD			





Database File: h&c_workmantrust_13-1hd.db
 Dataset Pathname: dil/hcstck
 Presentation Format: cndlspec
 Dataset Creation: Sun Oct 28 04:14:08 2012
 Charted by: Depth in Feet scaled 1:240

