



Pioneer Energy Services

# Radiation Guard Log

15-147-20,695-00-00

API No.

Company **Bach Oil Production**

Well **Forssberg No.1**

Field

County **Phillips**

State

**Kansas**

Location

**2483' FNL & 1737' FEL**

Other Services  
**NONE**

Sec: **6** Twp: **4S** Rge: **19W**

Permanent Datum **Ground Level** Elevation **2094**

Log Measured From **Kelly Bushing** **5** Ft. Above Perm. Datum

Elevation  
K.B. **2099**  
D.F. **2094**  
G.L. **2094**

Date	11/2/2012	
Run Number	One	
Depth Driller	3510	
Depth Logger	3508	
Bottom Logged Interval	3507	
Top Log Interval	200	
Casing Driller	8.625 @ 210	
Casing Logger	209	
Bit Size	7.875	
Type Fluid in Hole	Chemical	
Salinity,ppm CL	800	
Density / Viscosity	9.1 60	
pH / Fluid Loss	10.5 7.6	
Source of Sample	Flowline	
Rm @ Meas. Temp	1.8 @ 47	
Rmf @ Meas. Temp	1.35 @ 47	
Rmc @ Meas. Temp	2.43 @ 47	
Source of Rmf / Rmc	Charts	
Rm @ BHT	.76 @ 111	
Operating Rig Time	2 1/2 Hours	
Max Rec. Temp. F	111	
Equipment Number	17	
Location	Hays	
Recorded By	C. Desai	
Witnessed By	Bob Petersen	

<<< Fold Here >>>

All interpretations are opinions based on inferences from electrical or other measurements and we cannot and do not guarantee the accuracy or correctness of any interpretation, and we shall not, except in the case of gross or willful negligence on our part, be liable or responsible for any loss, costs, damages, or expenses incurred or sustained by anyone resulting from any interpretation made by any of our officers, agents or employees. These interpretations are also subject to our general terms and conditions set out in our current Price Schedule.

### Comments

Thank you for using Pioneer Energy Services  
www.pioneerenergy.com  
785 625 3858

Logan KS, 4 N, 3 E, N Into

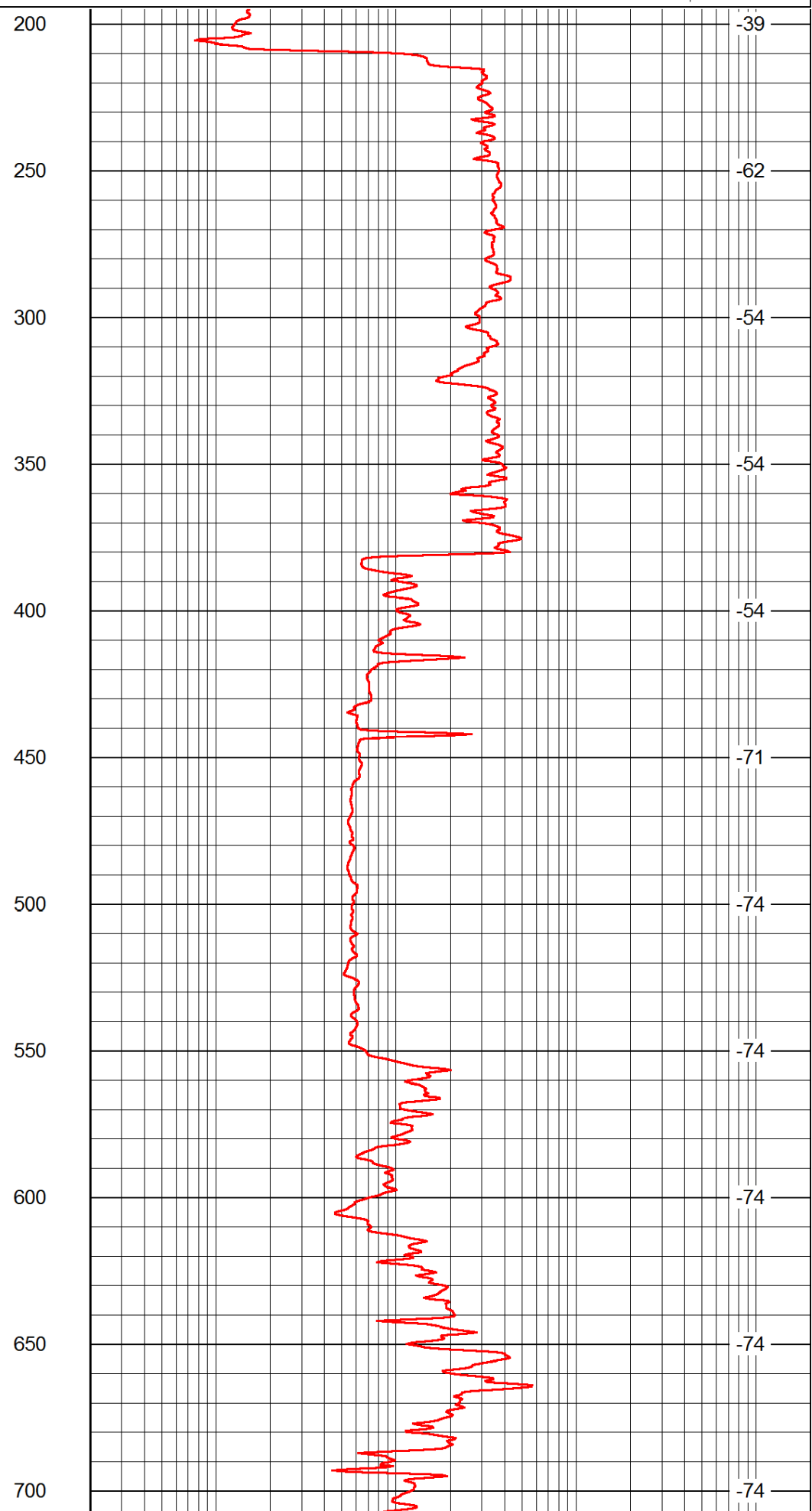
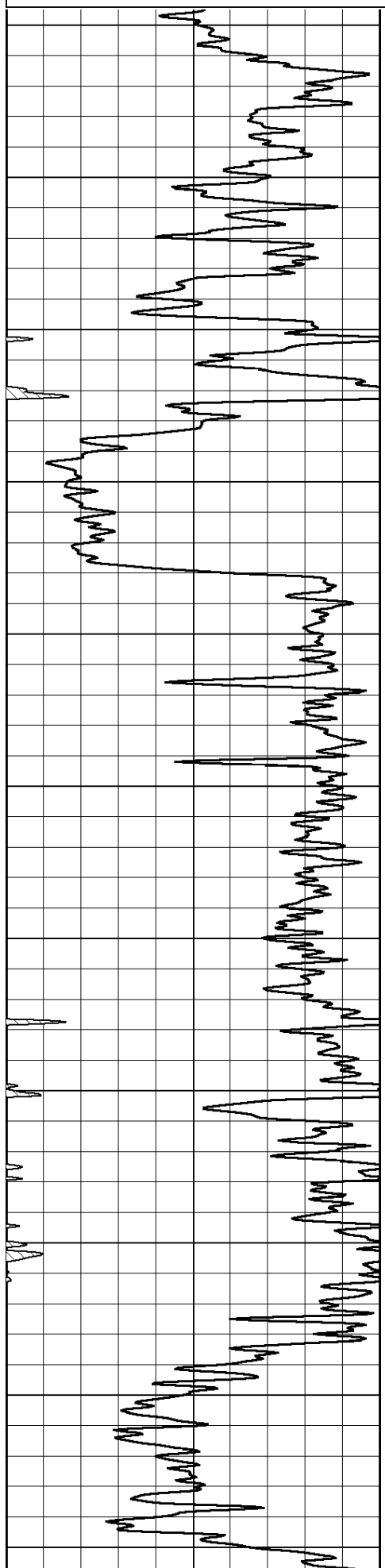
Database File: c:\warrior\data\bach\_forssberg no.1\bachhd.db  
 Dataset Pathname: rag/bachstk  
 Presentation Format: rag2in  
 Dataset Creation: Fri Nov 02 12:28:08 2012  
 Charted by: Depth in Feet scaled 1:600

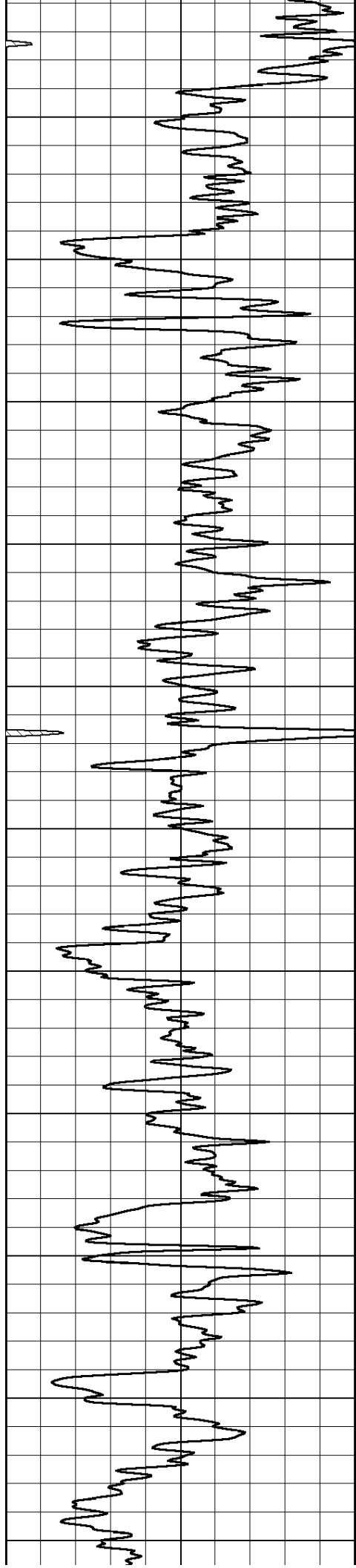
0 Gamma Ray 150

0.2 lgrd

2000

LSPD





750

800

850

900

950

1000

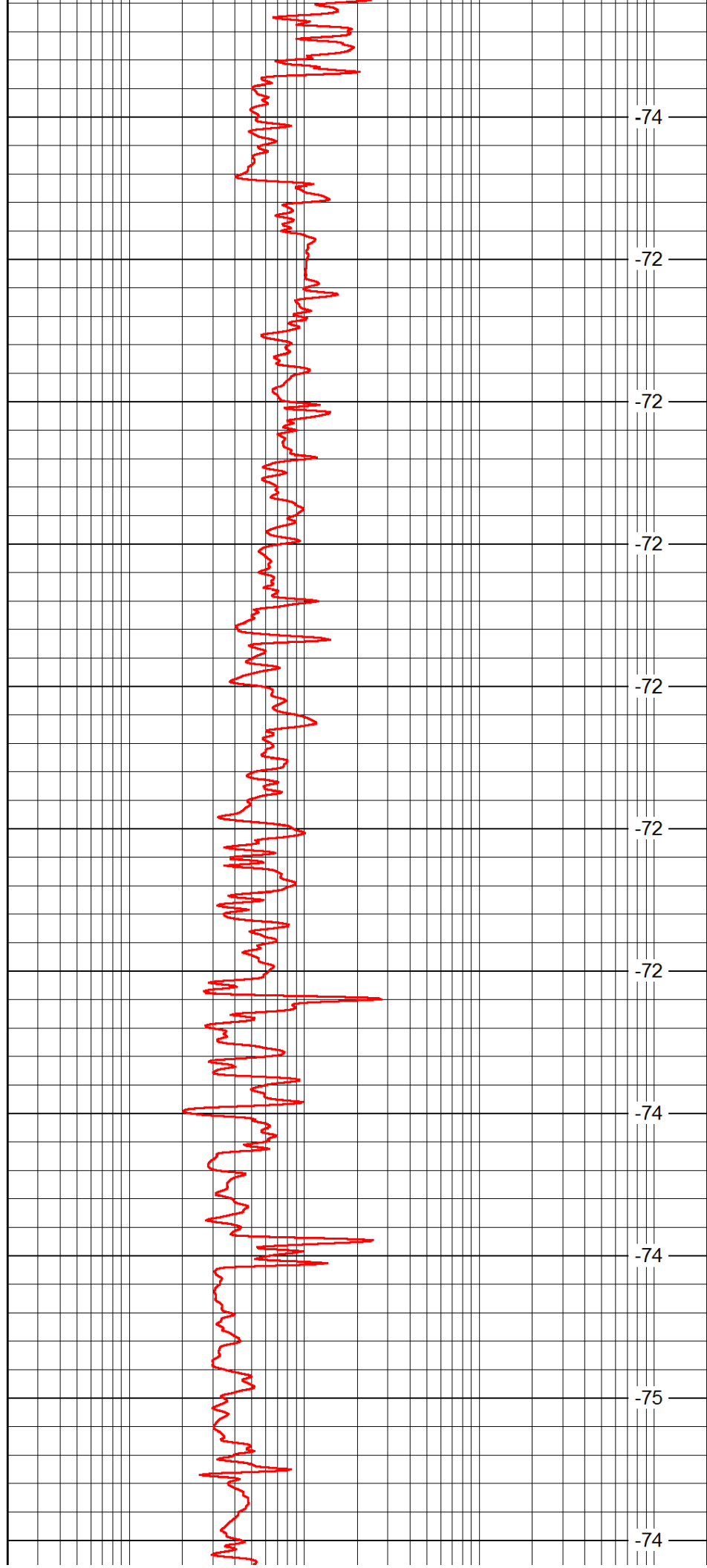
1050

1100

1150

1200

1250



-74

-72

-72

-72

-72

-72

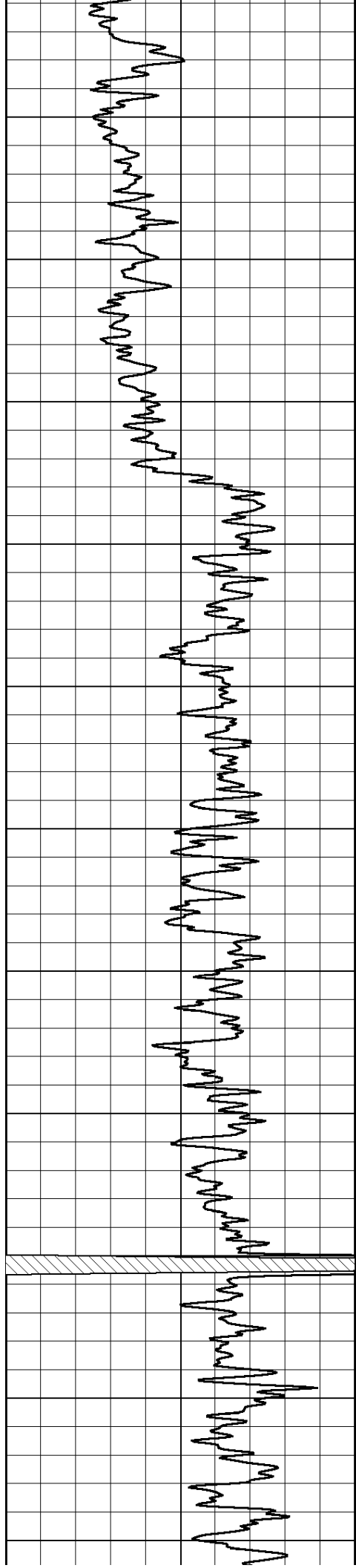
-72

-74

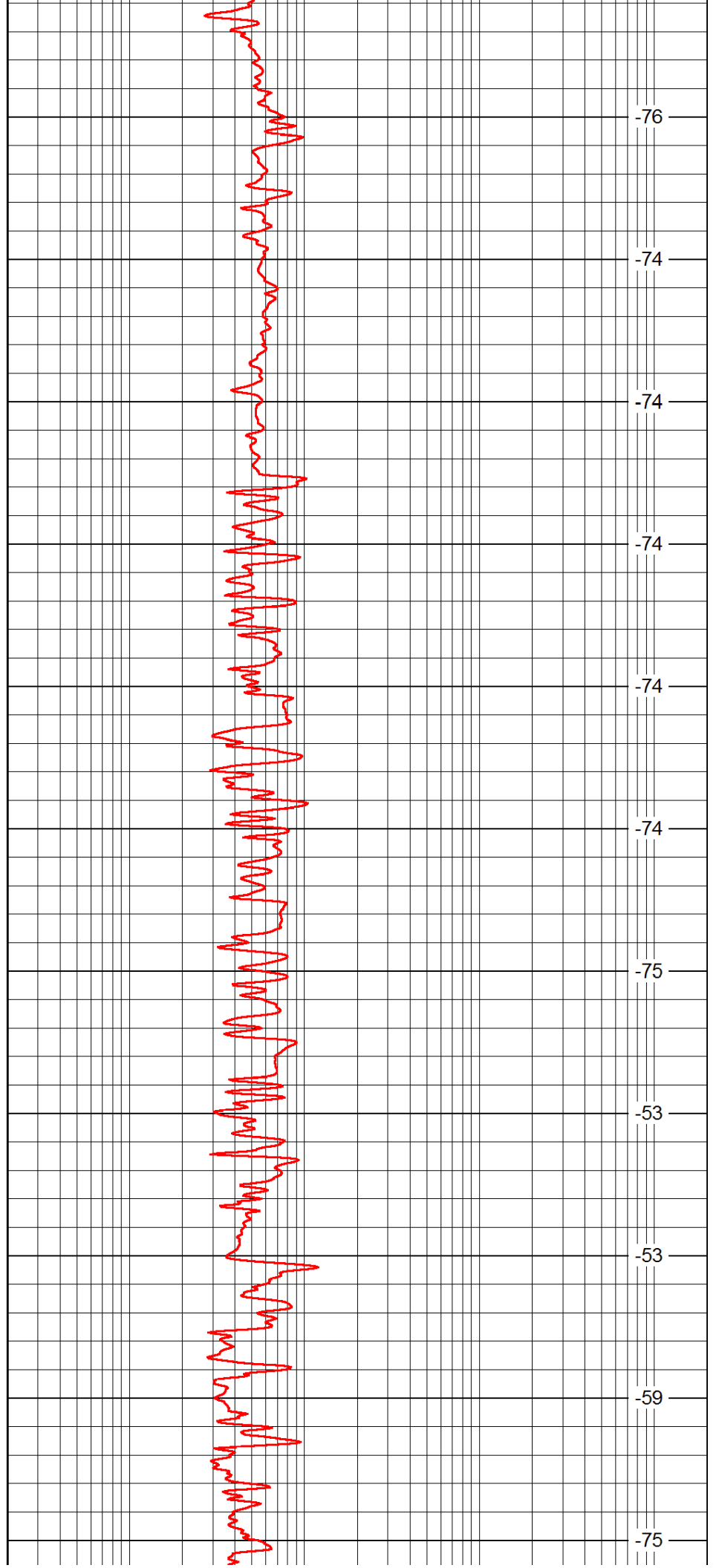
-74

-75

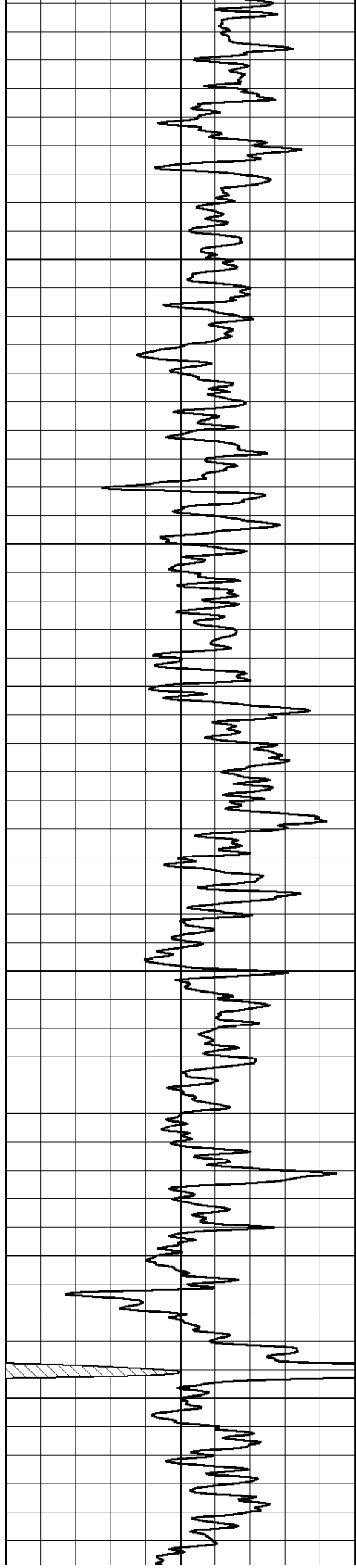
-74



1300  
1350  
1400  
1450  
1500  
1550  
1600  
1650  
1700  
1750  
1800



-76  
-74  
-74  
-74  
-74  
-75  
-53  
-53  
-59  
-75



1850

1900

1950

2000

2050

2100

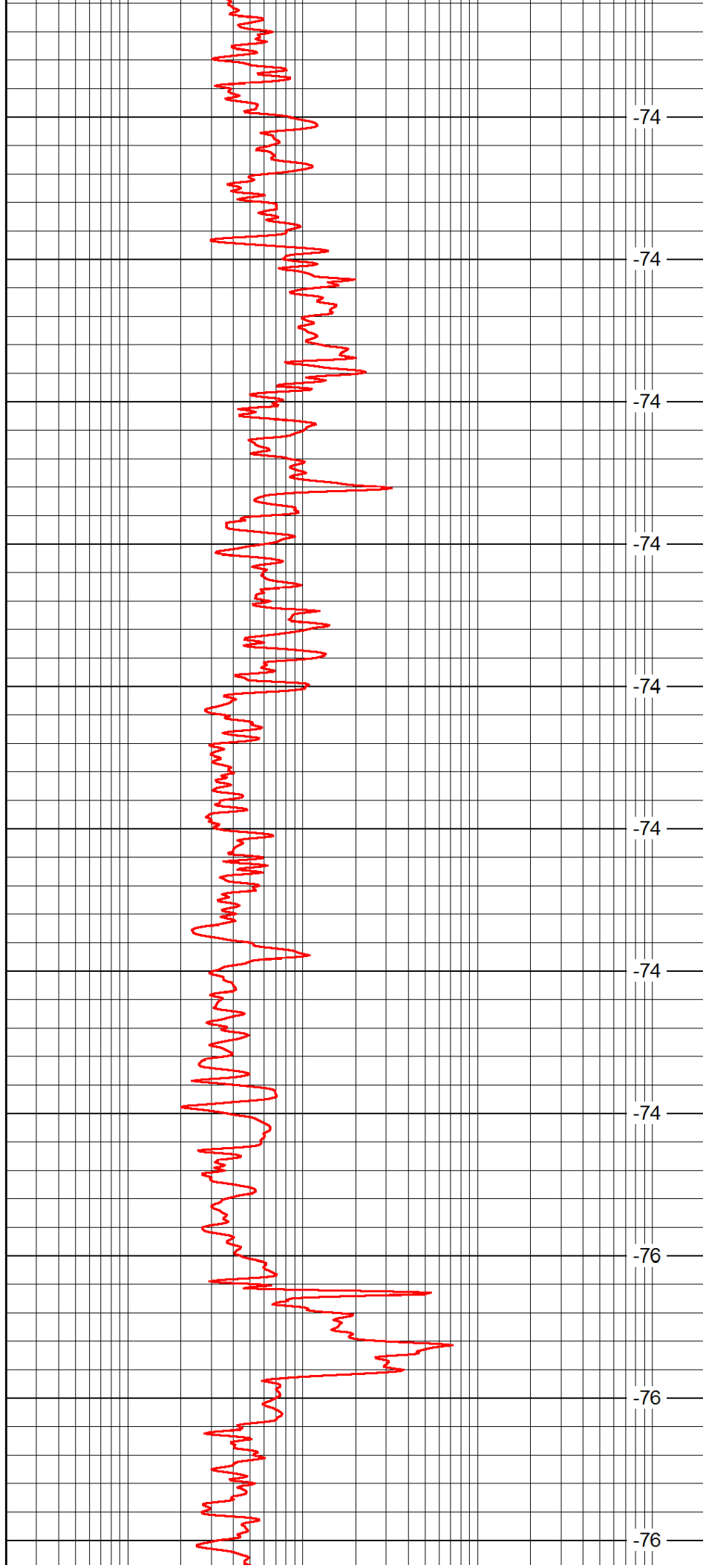
2150

2200

2250

2300

2350



-74

-74

-74

-74

-74

-74

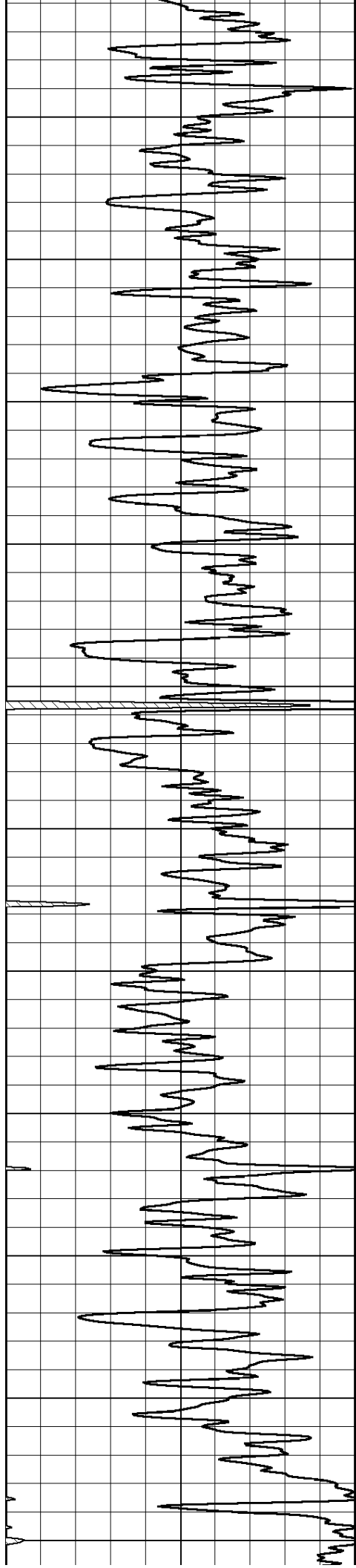
-74

-74

-76

-76

-76



2400

2450

2500

2550

2600

2650

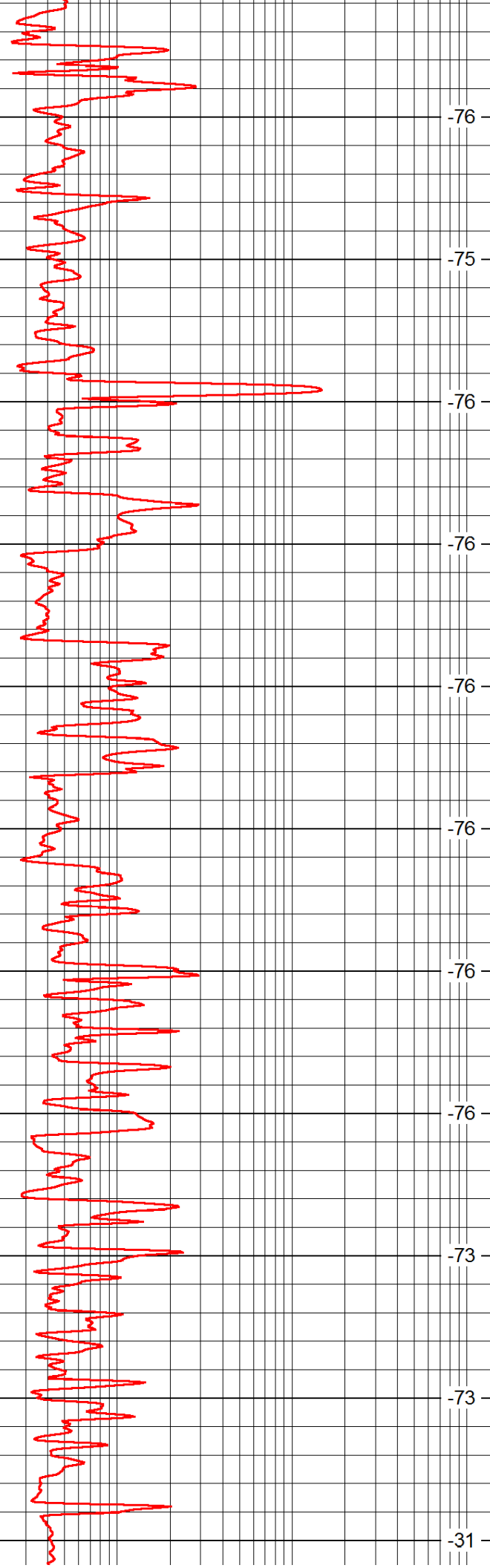
2700

2750

2800

2850

2900



-76

-75

-76

-76

-76

-76

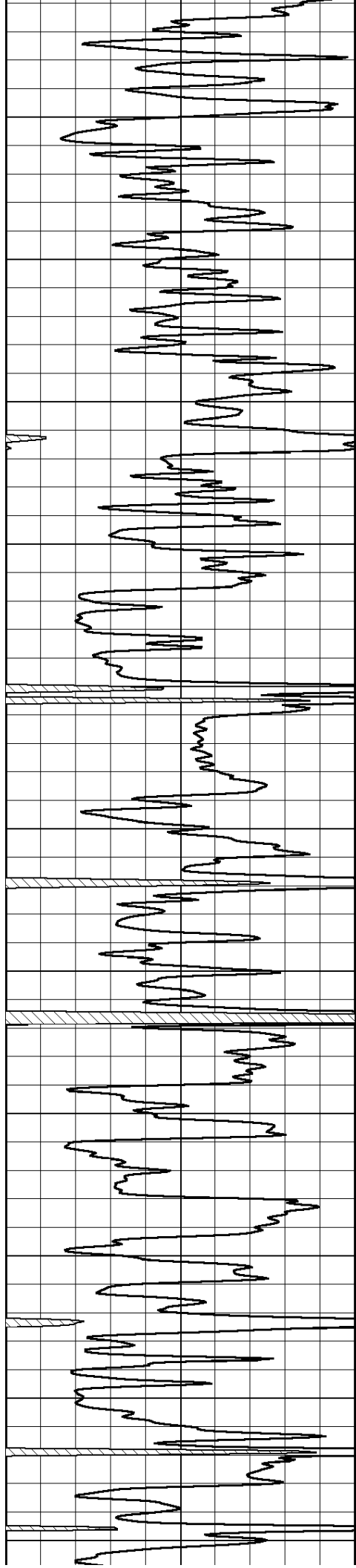
-76

-76

-73

-73

-31



2950

3000

3050

3100

3150

3200

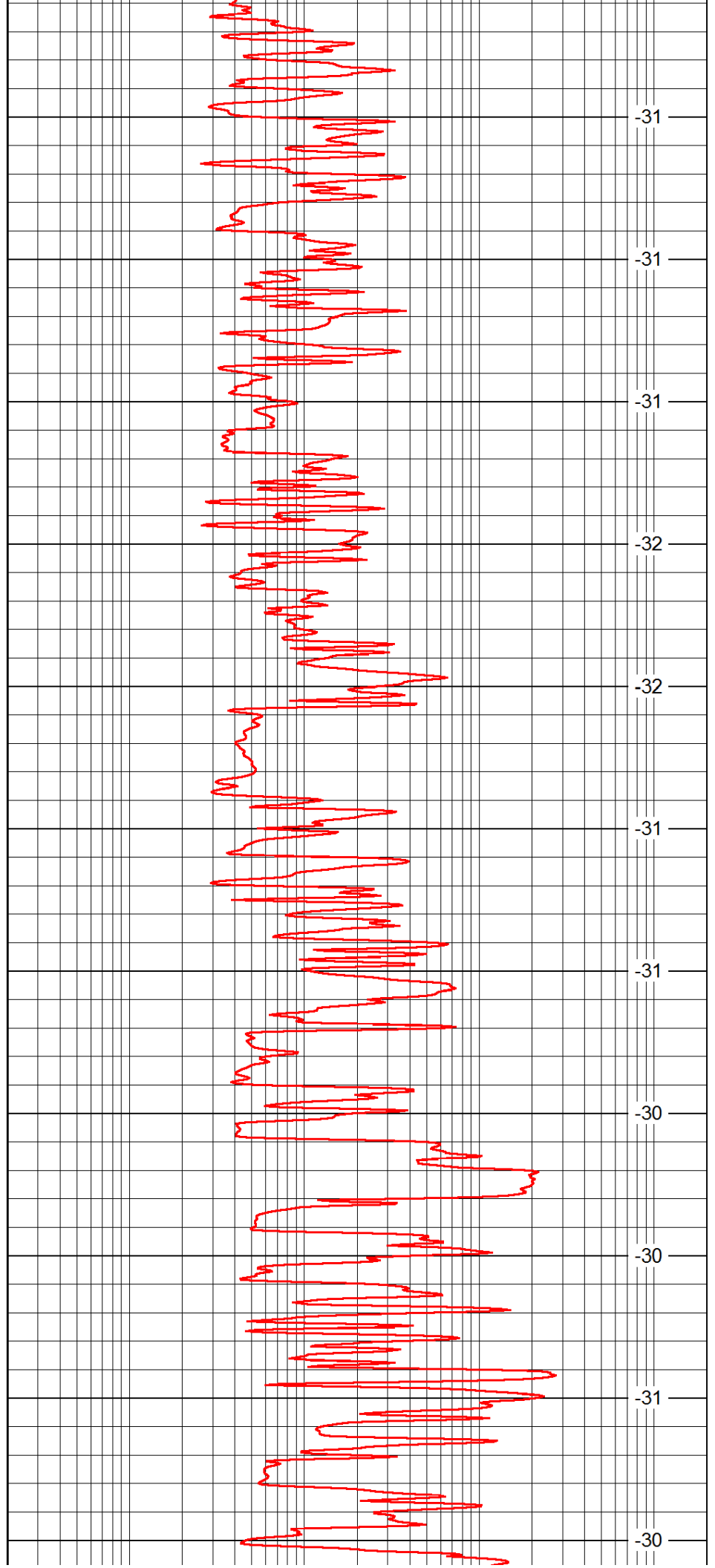
3250

3300

3350

3400

3450



-31

-31

-31

-32

-32

-31

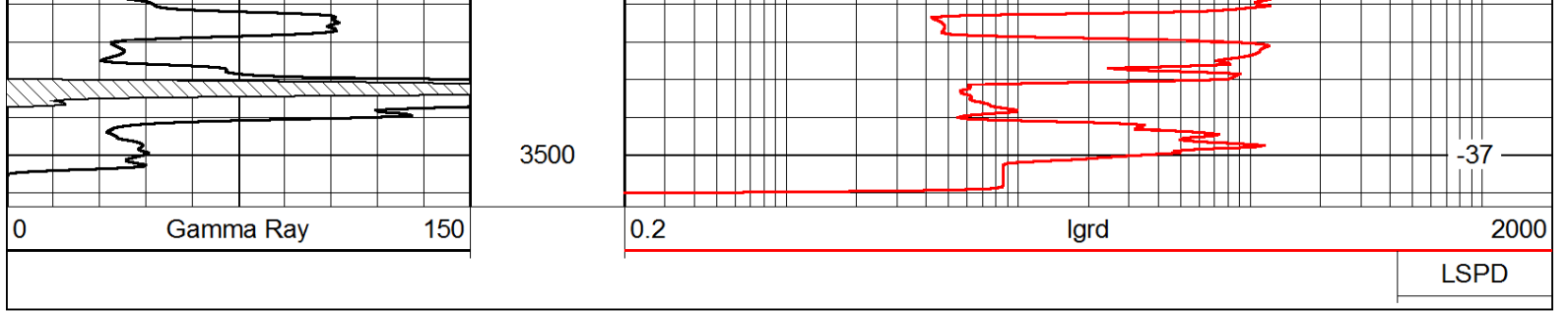
-31

-30

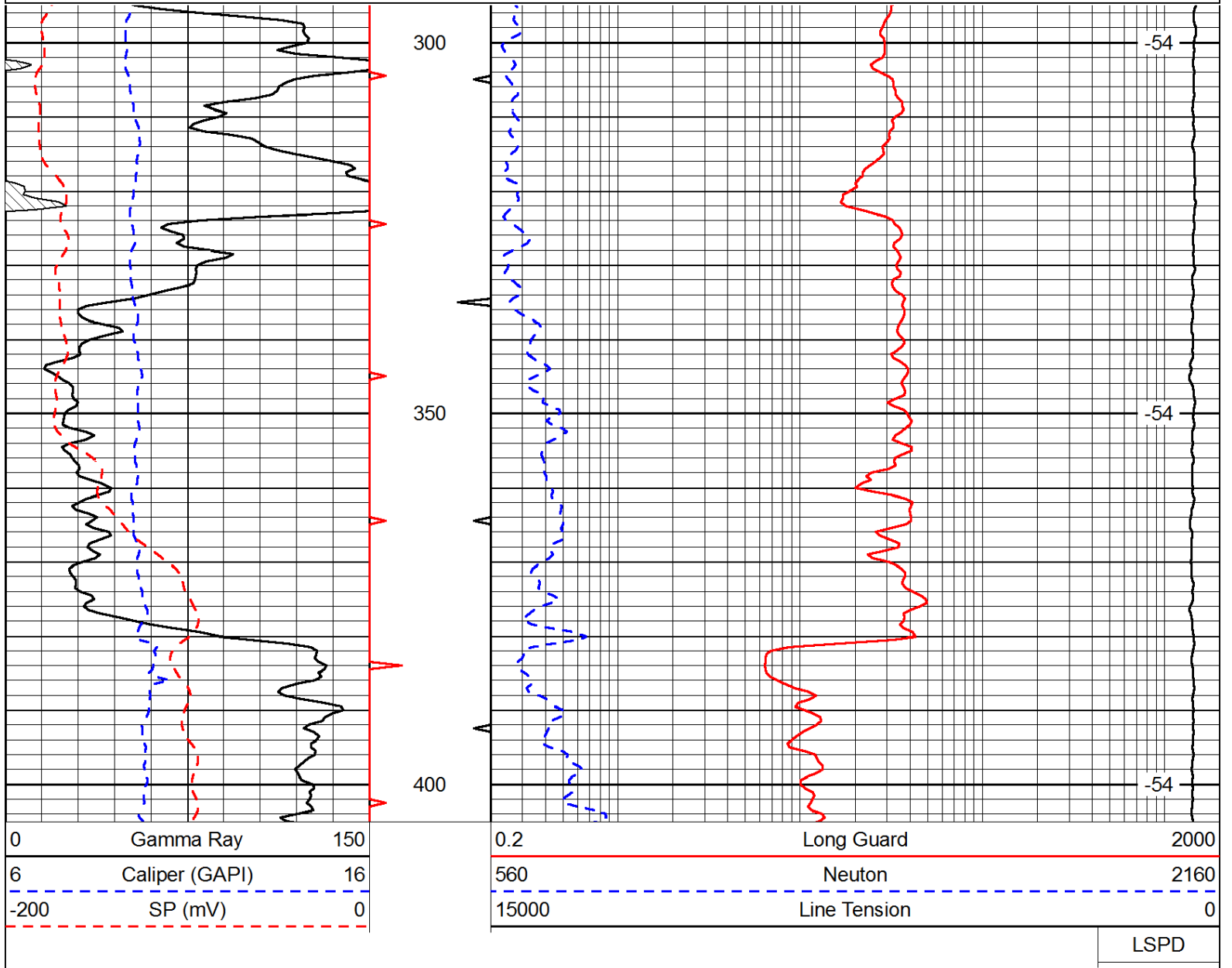
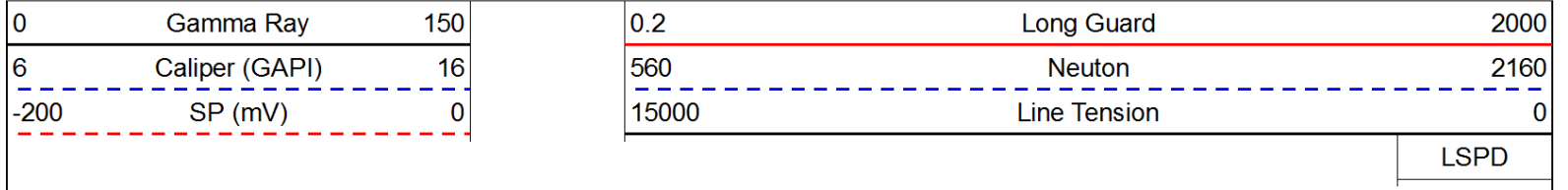
-30

-31

-30



Database File: c:\warrior\data\bach\_forsberg no.1\bachhd.db  
 Dataset Pathname: rag/bachstk  
 Presentation Format: rag  
 Dataset Creation: Fri Nov 02 12:28:08 2012  
 Charted by: Depth in Feet scaled 1:240

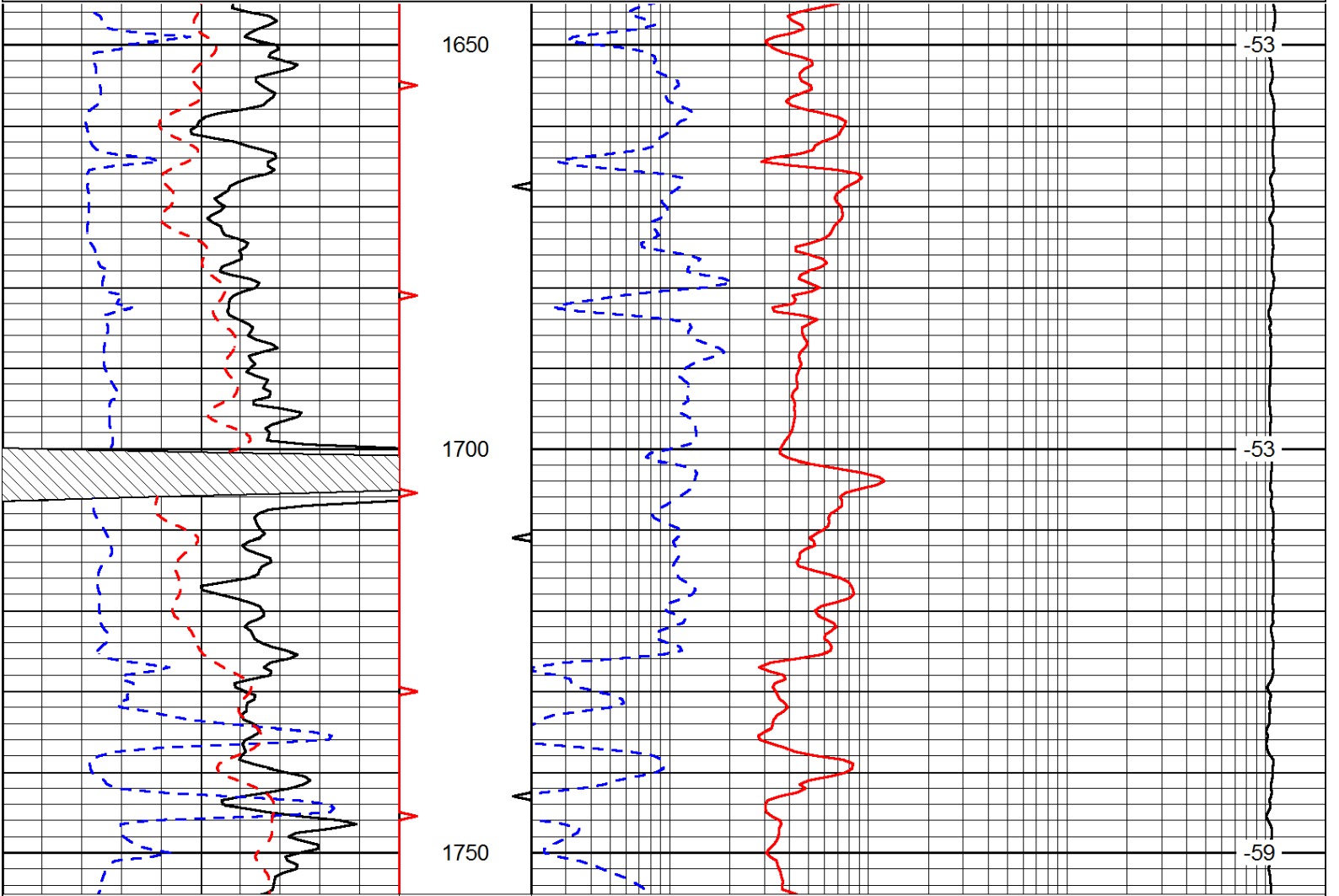


Database File: c:\warrior\data\bach\_forsberg no.1\bachhd.db



Dataset Pathname: rag/bachstk  
 Presentation Format: rag  
 Dataset Creation: Fri Nov 02 12:28:08 2012  
 Charted by: Depth in Feet scaled 1:240

0	Gamma Ray	150	0.2	Long Guard	2000
6	Caliper (GAPI)	16	560	Neuton	2160
-200	SP (mV)	0	15000	Line Tension	0
					LSPD



0	Gamma Ray	150	0.2	Long Guard	2000
6	Caliper (GAPI)	16	560	Neuton	2160
-200	SP (mV)	0	15000	Line Tension	0
					LSPD

Database File: c:\warrior\data\bach\_forssberg no.1\bachhd.db  
 Dataset Pathname: rag/bachstk  
 Presentation Format: rag  
 Dataset Creation: Fri Nov 02 12:28:08 2012  
 Charted by: Depth in Feet scaled 1:240

0	Gamma Ray	150	0.2	Long Guard	2000
6	Caliper (GAPI)	16	560	Neuton	2160
-200	SP (mV)	0	15000	Line Tension	0
					LSPD

