



Pioneer Energy Services

Dual Induction Log

API No.	15-153-20,910-00-00	
Company	Murfin Drilling Company, Inc.	
Well	PTL No. 1 - 22	
Field	Wildcat	
County	Rawlins	State
		Kansas
Location	1550' FSL & 2210' FEL	
Sec: 22	Twp: 2 S	Rge: 36 W
Permanent Datum	Ground Level	Elevation 3334
Log Measured From	Kelly Bushing	10 Ft. Above Perm. Datum
Drilling Measured From	Kelly Bushing	K.B. 3344 D.F. 3334 G.L. 3334

Date	11/07/2012
Run Number	One
Depth Driller	5060
Depth Logger	5060
Bottom Logged Interval	5059
Top Log Interval	0
Casing Driller	8.625 @ 390
Casing Logger	388
Bit Size	7.875
Type Fluid in Hole	Chemical
Salinity, ppm CL	1400
Density / Viscosity	9.3 80
pH / Fluid Loss	10.5 6.4
Source of Sample	Flowline
Rm @ Meas. Temp	1.10 @ 75
Rmf @ Meas. Temp	.83 @ 75
Rmc @ Meas. Temp	1.49 @ 75
Source of Rmf / Rmc	Charts
Rm @ BHT	.65 @ 127
Operating Rig Time	5 Hours
Max Rec. Temp. F	127
Equipment Number	108
Location	Hays
Recorded By	D. Martin
Witnessed By	Robert Stolzle

<<< Fold Here >>>

All interpretations are opinions based on inferences from electrical or other measurements and we cannot and do not guarantee the accuracy or correctness of any interpretation, and we shall not, except in the case of gross or willful negligence on our part, be liable or responsible for any loss, costs, damages, or expenses incurred or sustained by anyone resulting from any interpretation made by any of our officers, agents or employees. These interpretations are also subject to our general terms and conditions set out in our current Price Schedule.

Comments

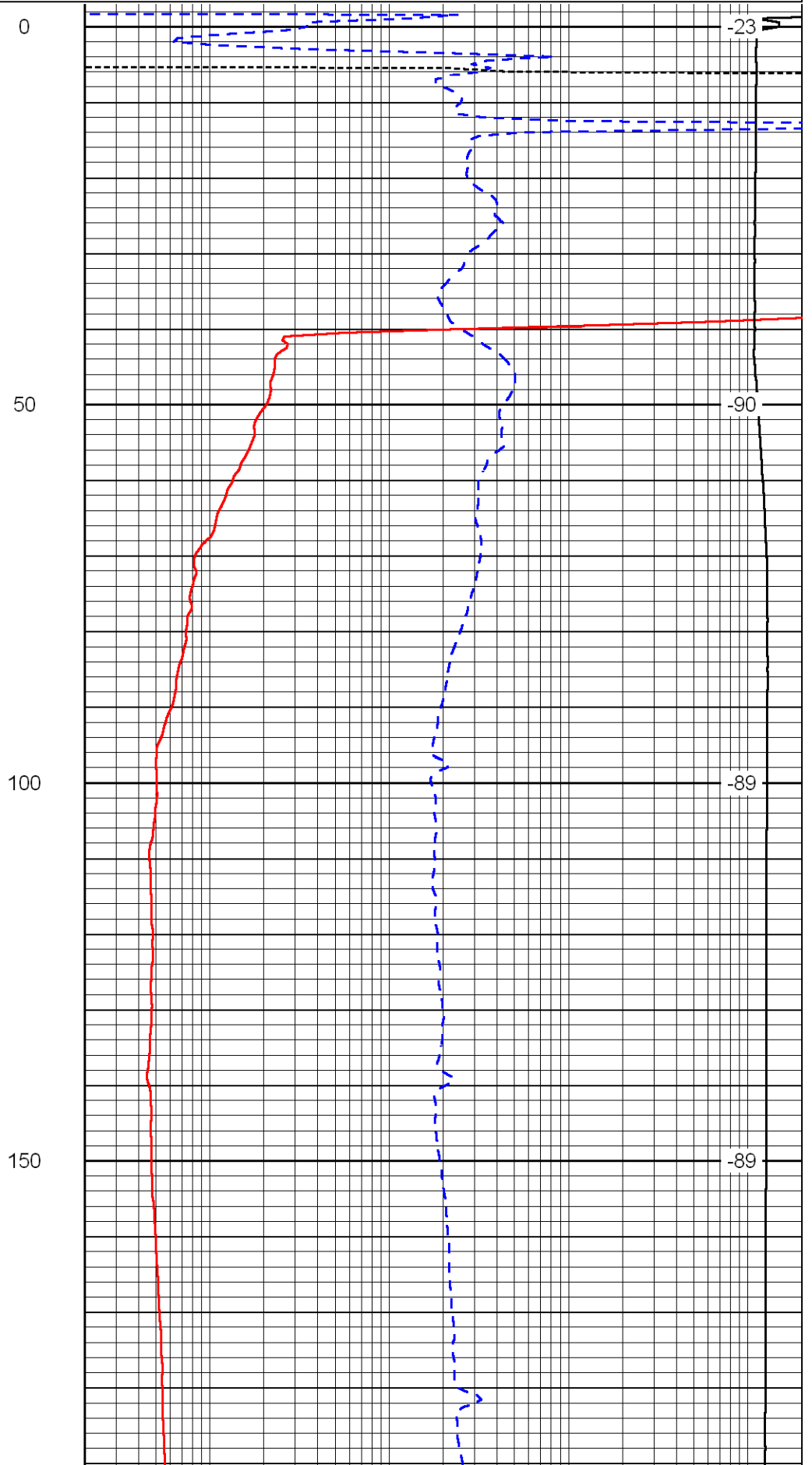
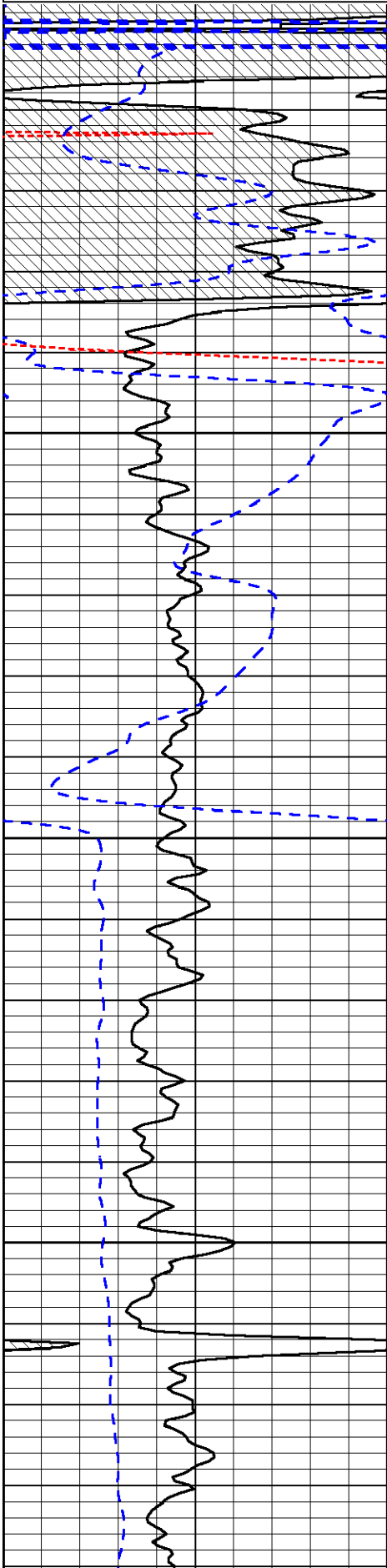
Thank you for using Log-Tech, Inc.
 (785) 625-3858
 Atwood, KS
 16 W to 5 Rd., 5 N to U Rd.,
 1/2 W, N Into

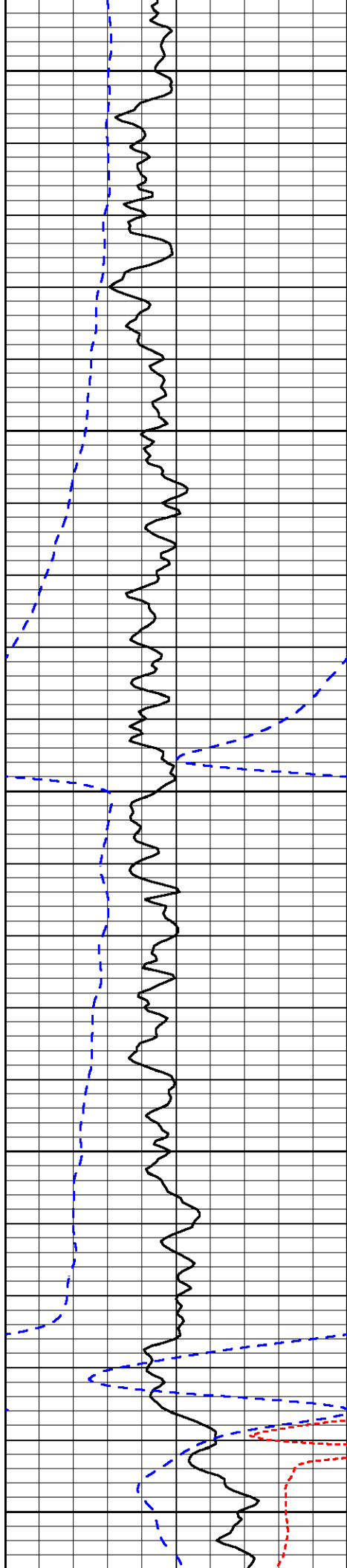
Database File: murfhd.db
 Dataset Pathname: DIL/murfstk
 Presentation Format: dil
 Dataset Creation: Tue Nov 06 06:48:09 2012
 Charted by: Depth in Feet scaled 1:240

0	Gamma Ray	150
-160	RXO/RT	40
-200	SP	0

0.2	Deep Resistivity	2000
0.2	Medium Resistivity	2000
0.2	Shallow Resistivity	2000
10000	Line Tension	0

LSPD





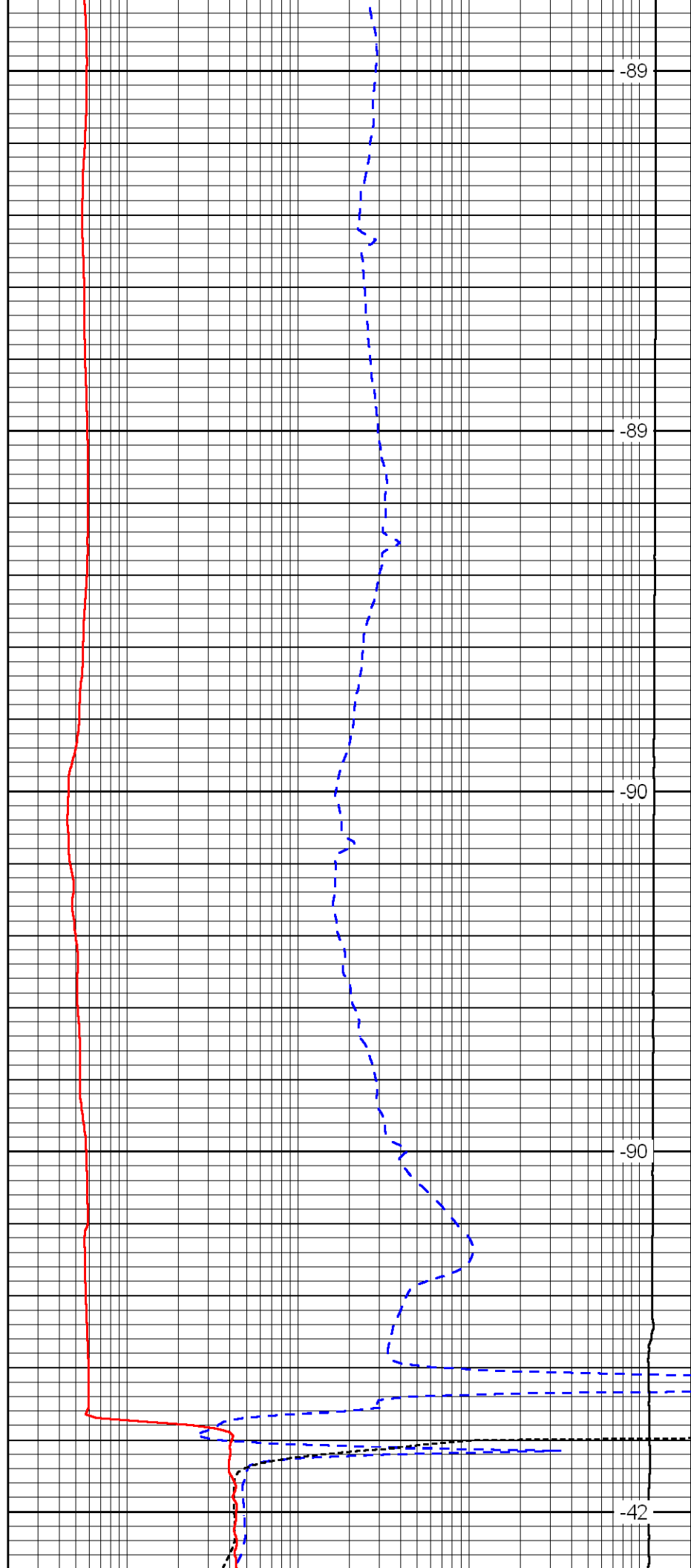
200

250

300

350

400



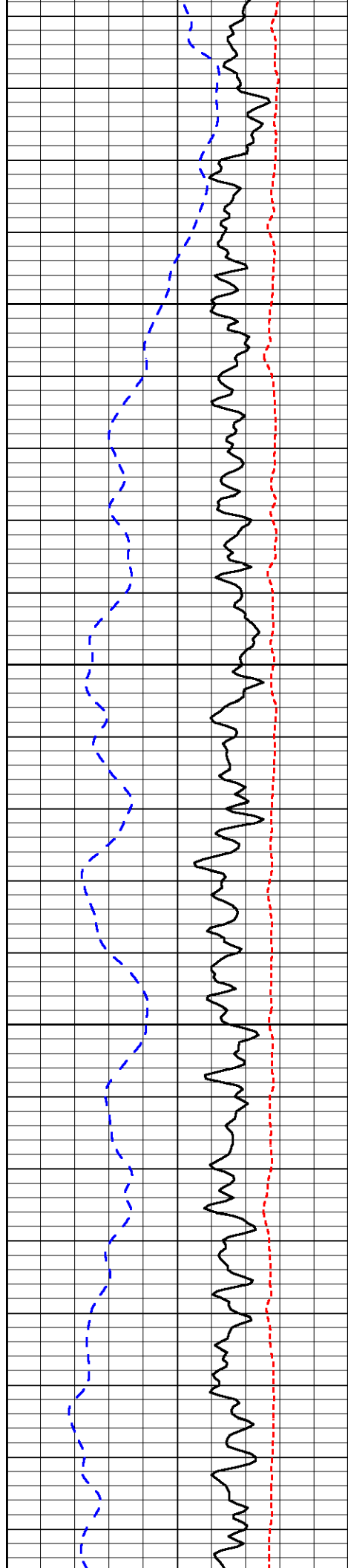
-89

-90

-90

-90

-42



450

500

550

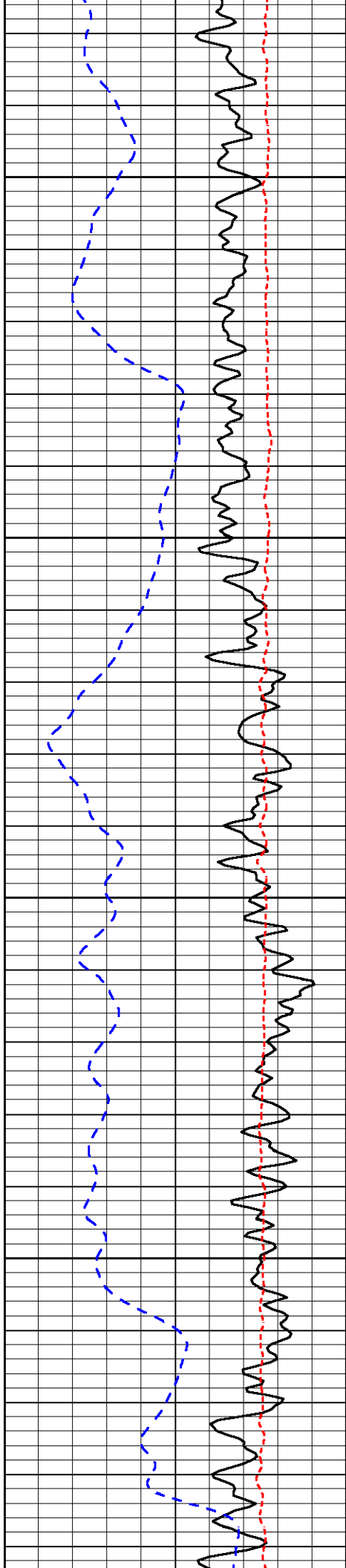
600

-66

-66

-67

-66

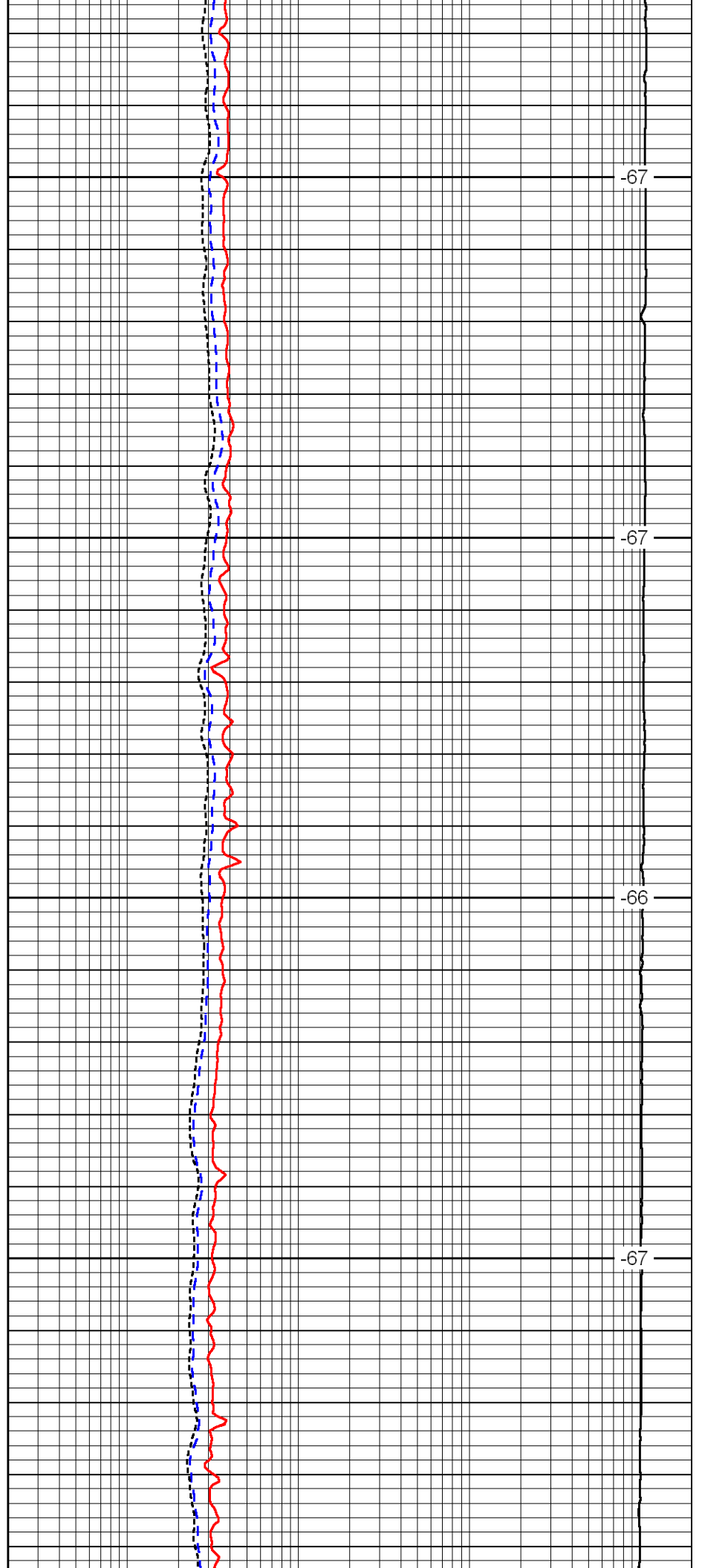


650

700

750

800

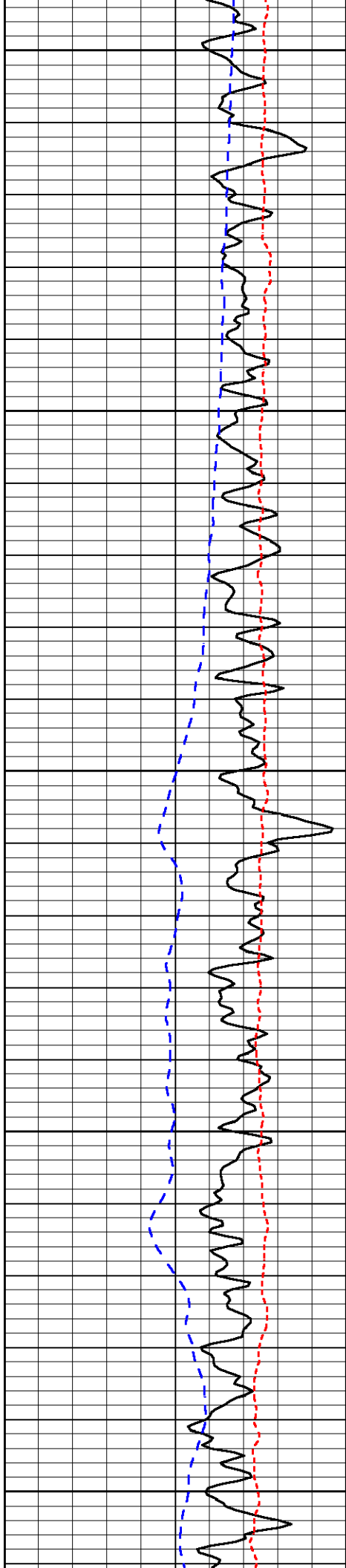


-67

-67

-66

-67



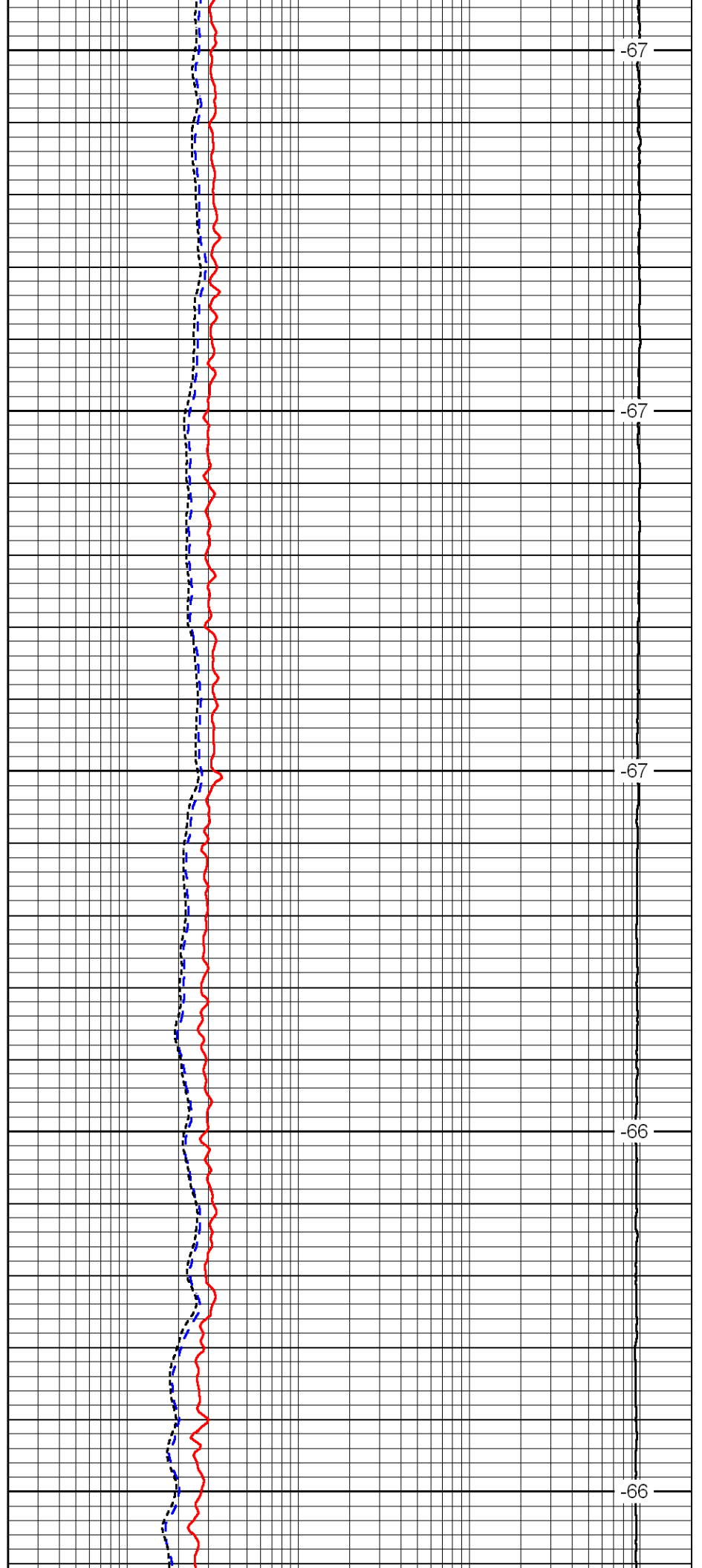
850

900

950

1000

1050



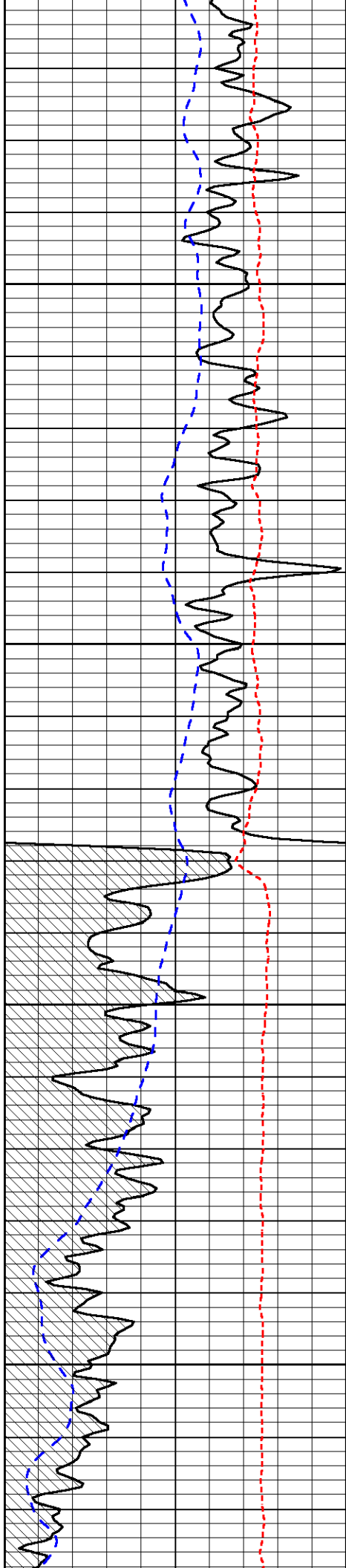
-67

-67

-67

-66

-66

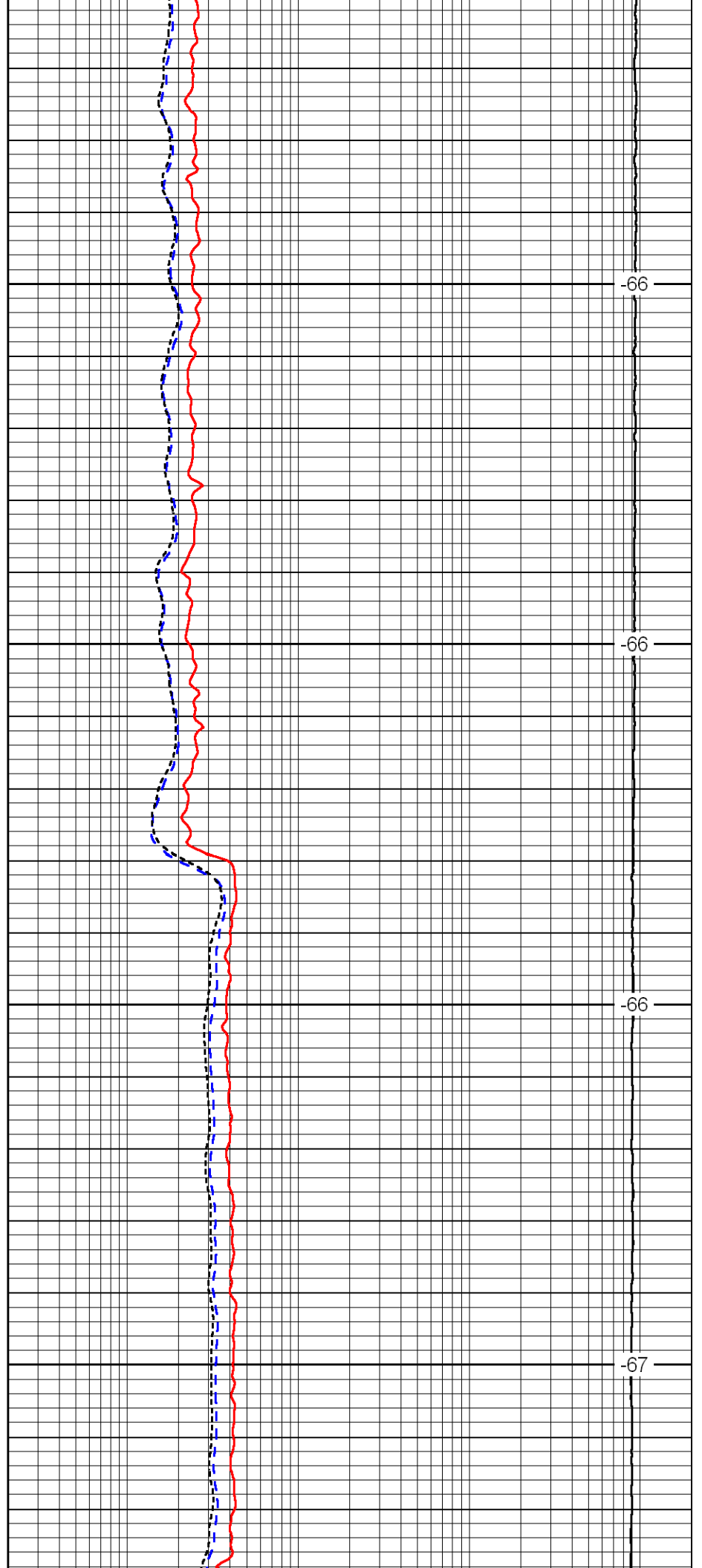


1100

1150

1200

1250

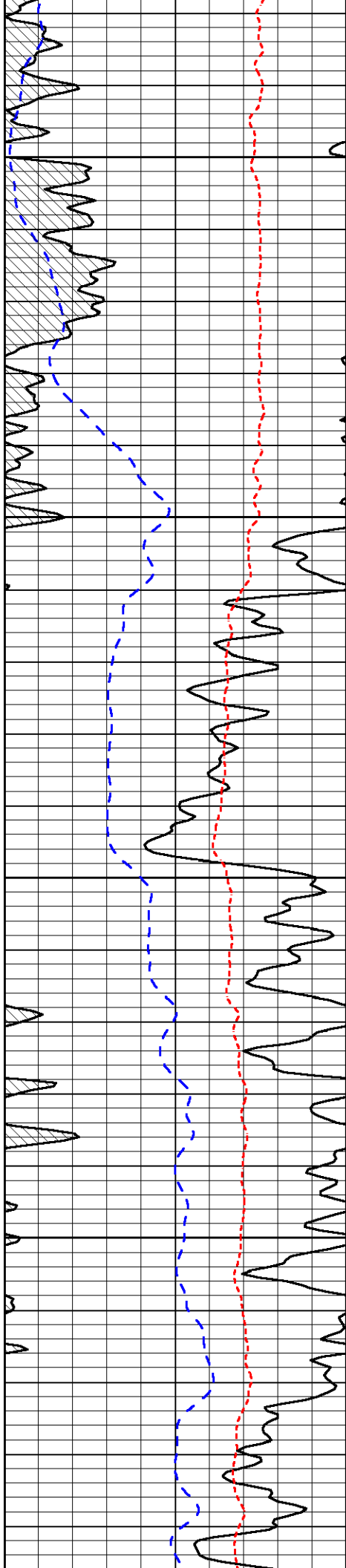


-66

-66

-66

-67



1300

1350

1400

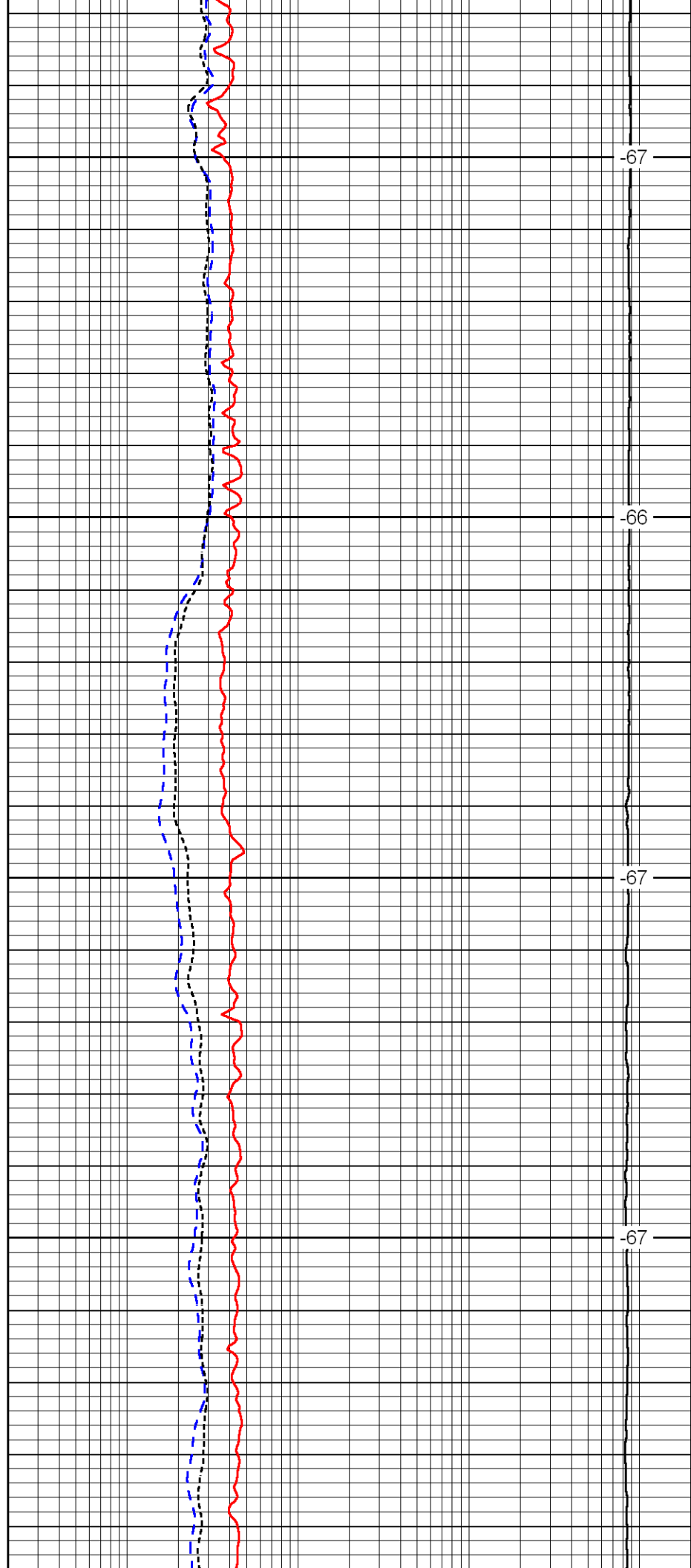
1450

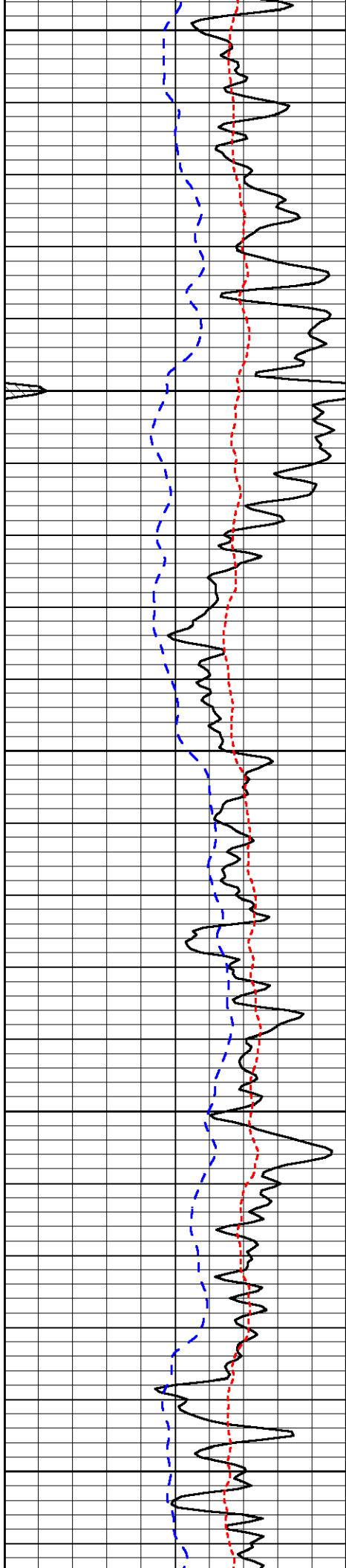
-67

-66

-67

-67





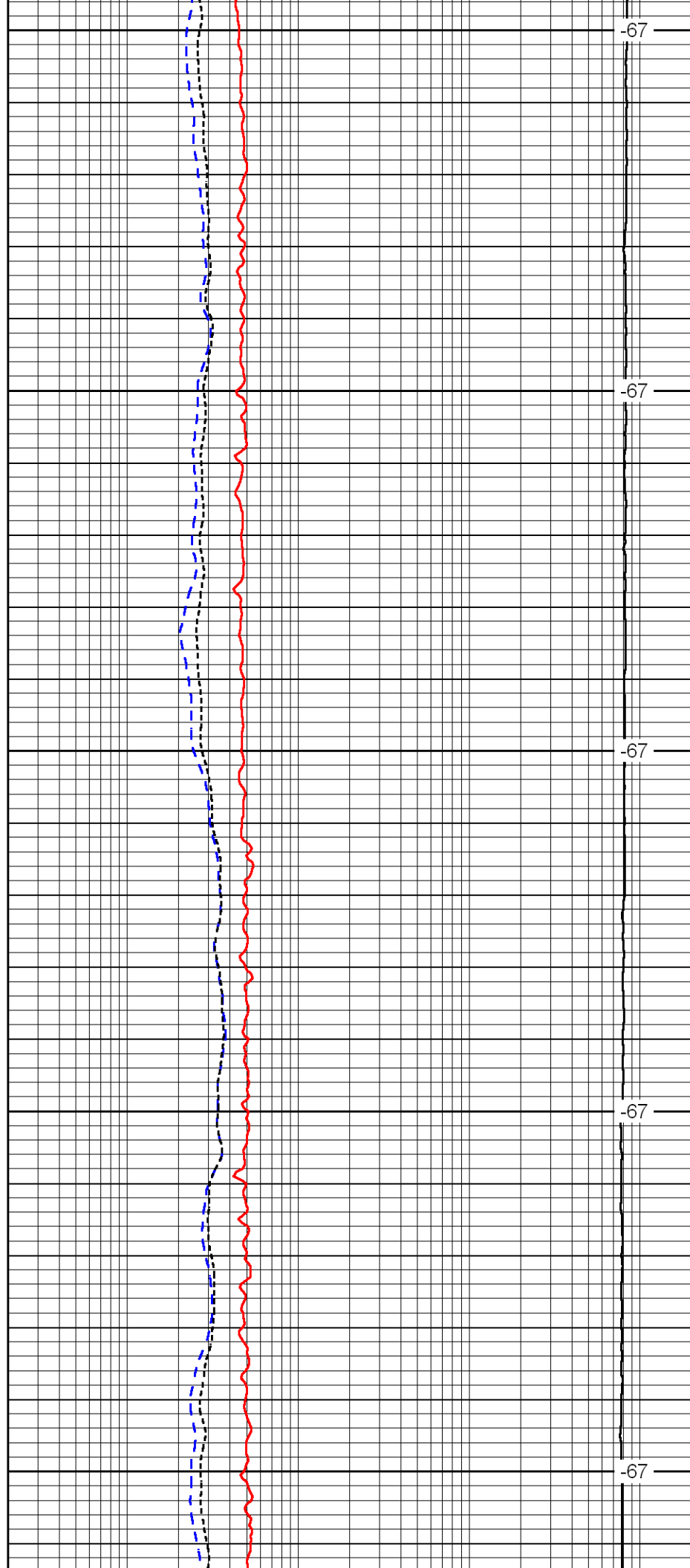
1500

1550

1600

1650

1700



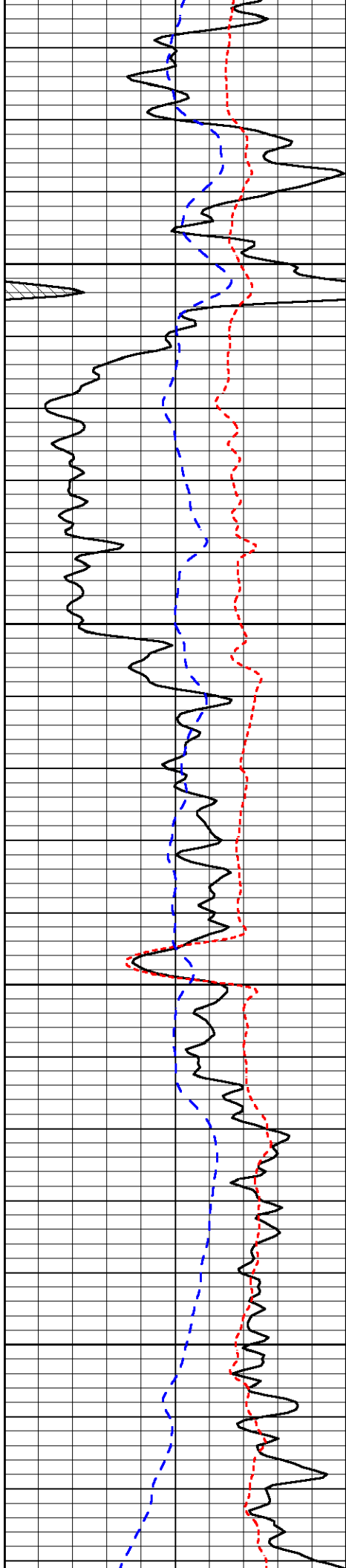
-67

-67

-67

-67

-67

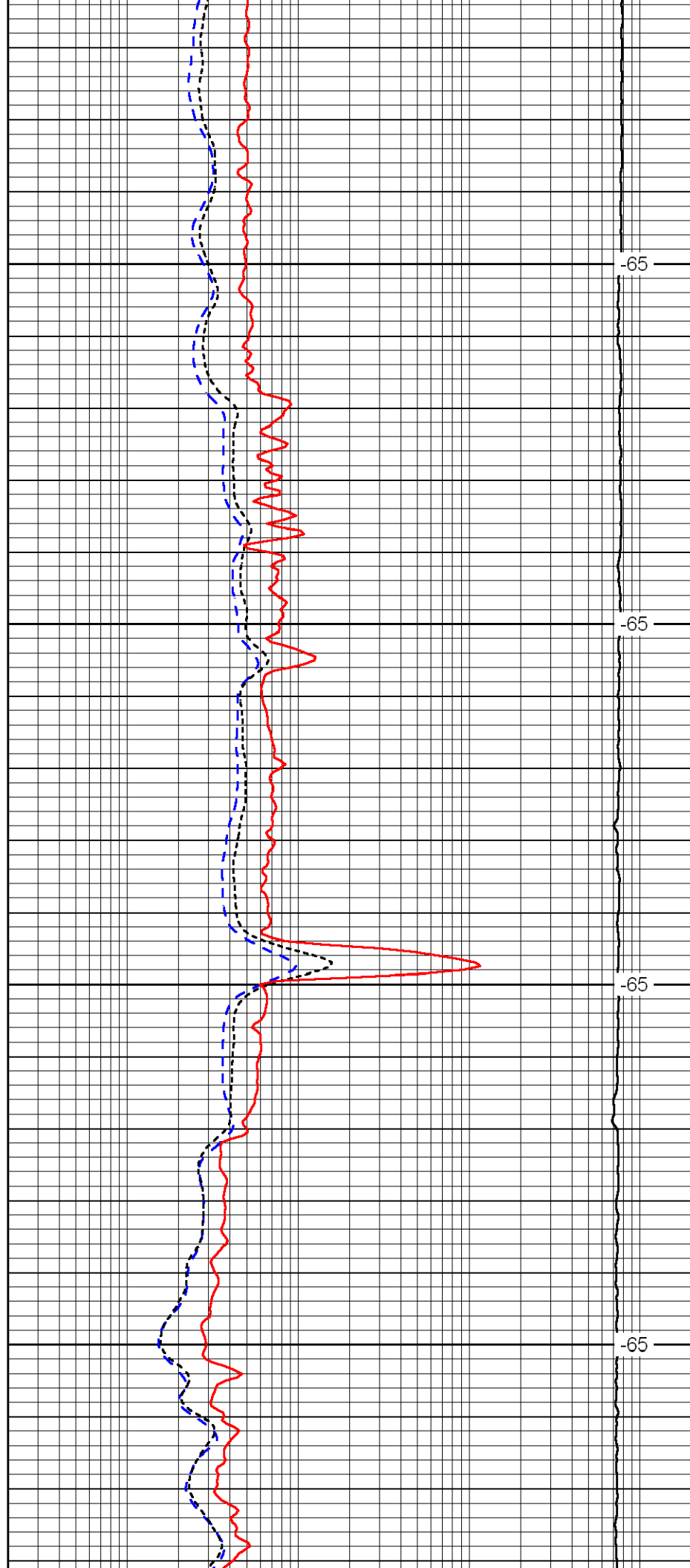


1750

1800

1850

1900

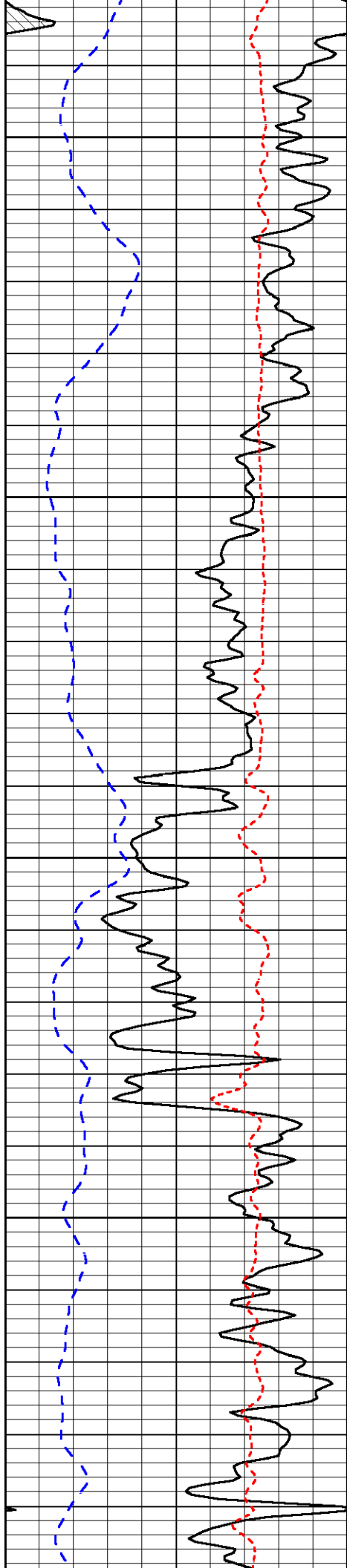


-65

-65

-65

-65

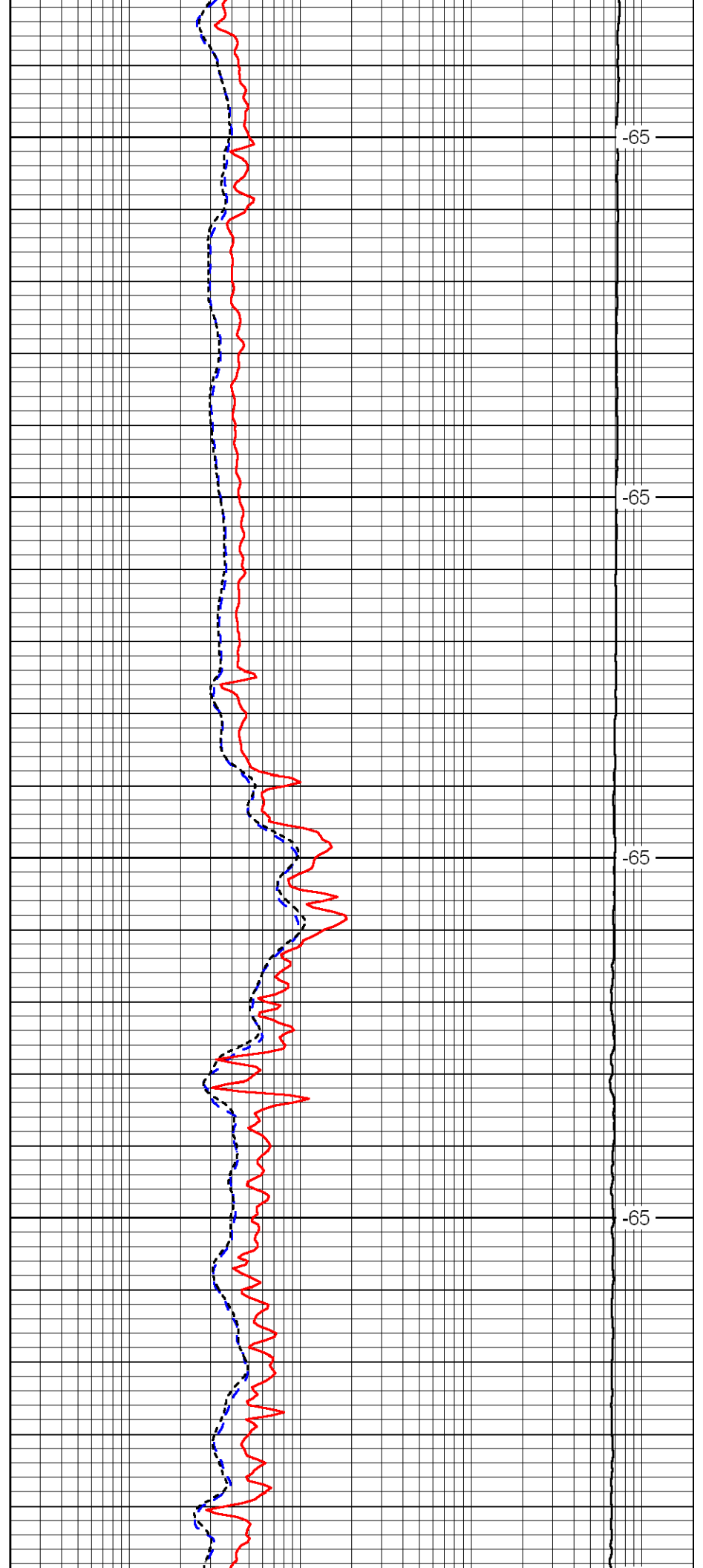


1950

2000

2050

2100

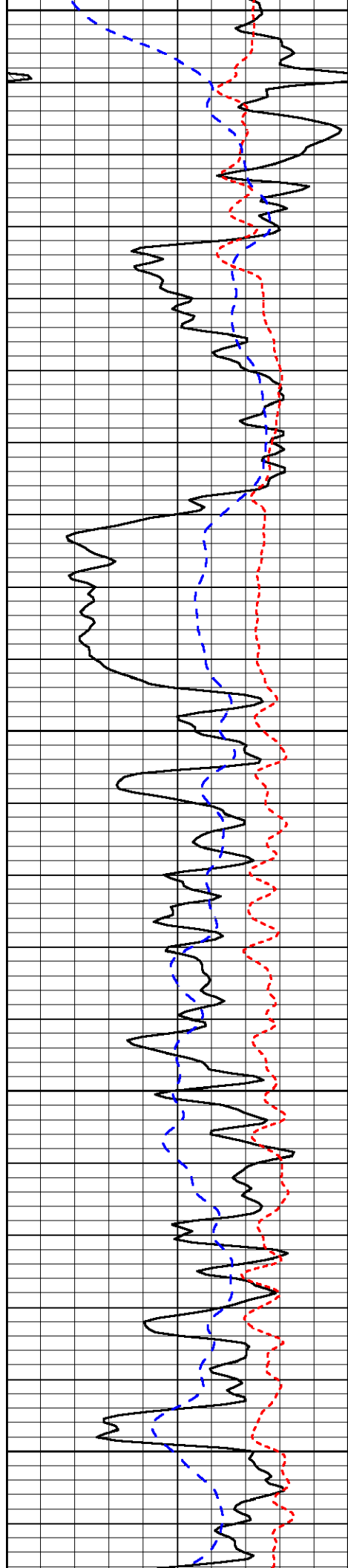


-65

-65

-65

-65



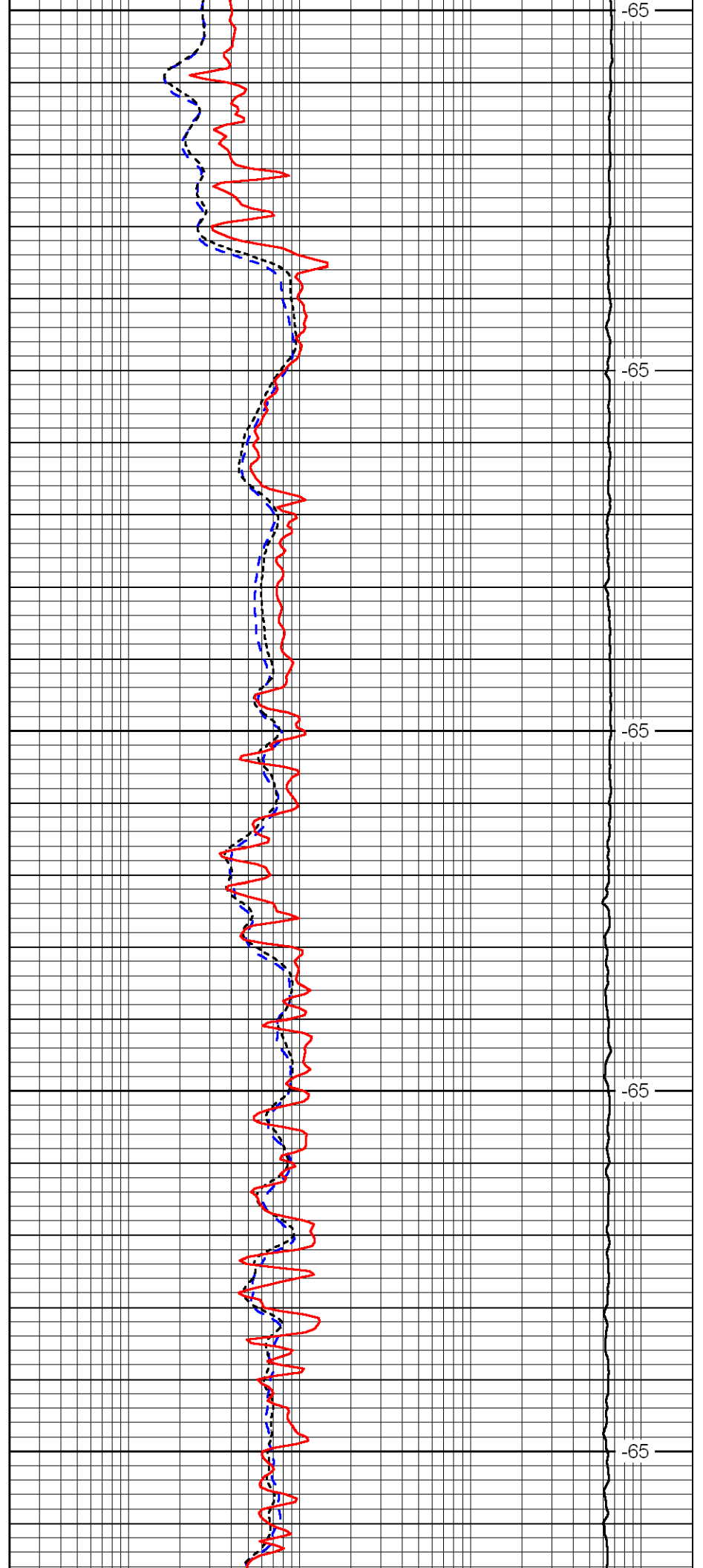
2150

2200

2250

2300

2350



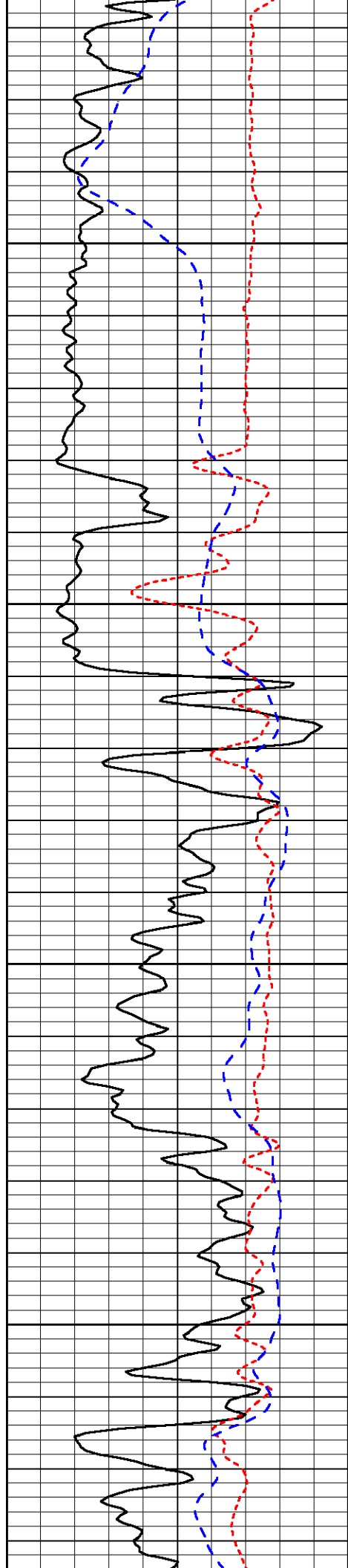
-65

-65

-65

-65

-65

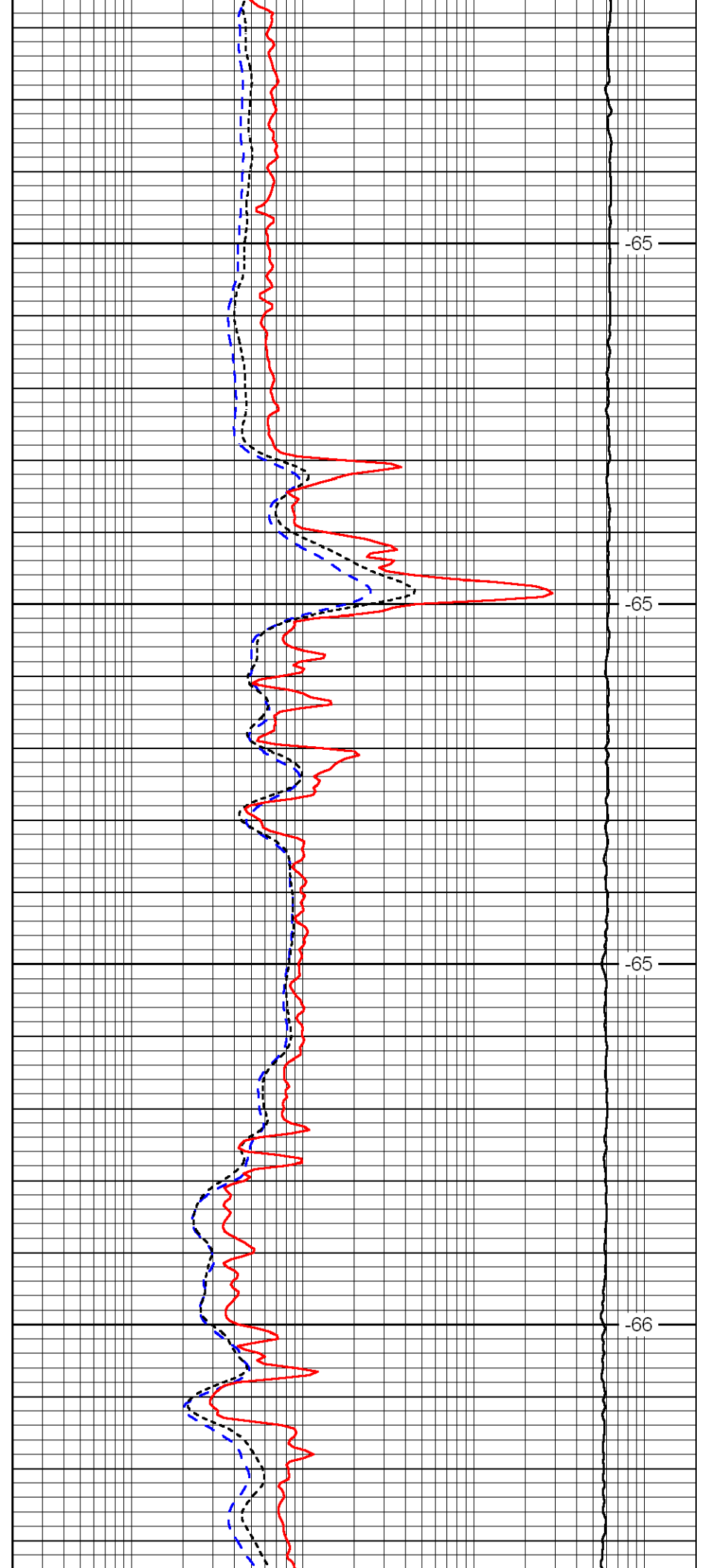


2400

2450

2500

2550

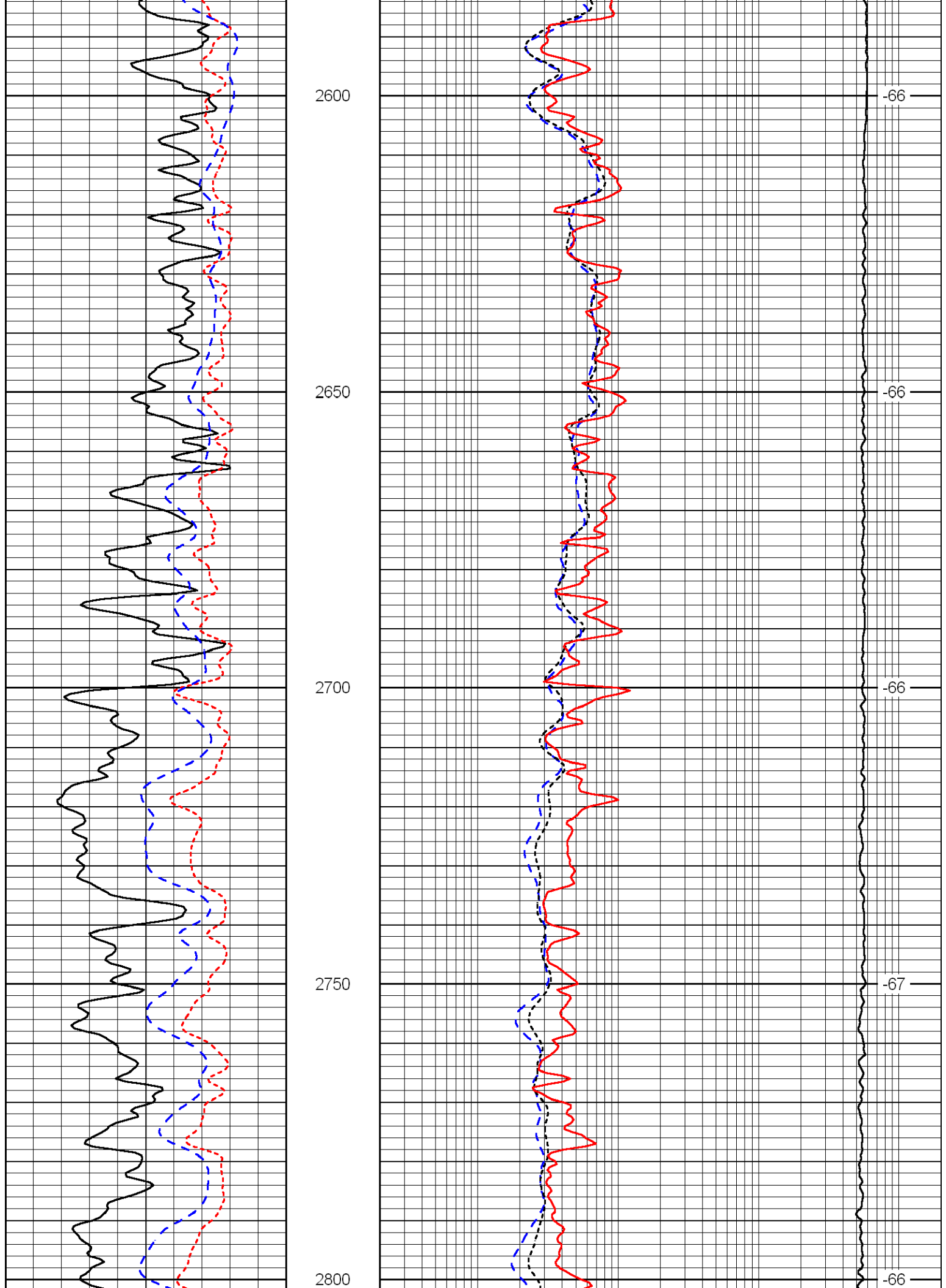


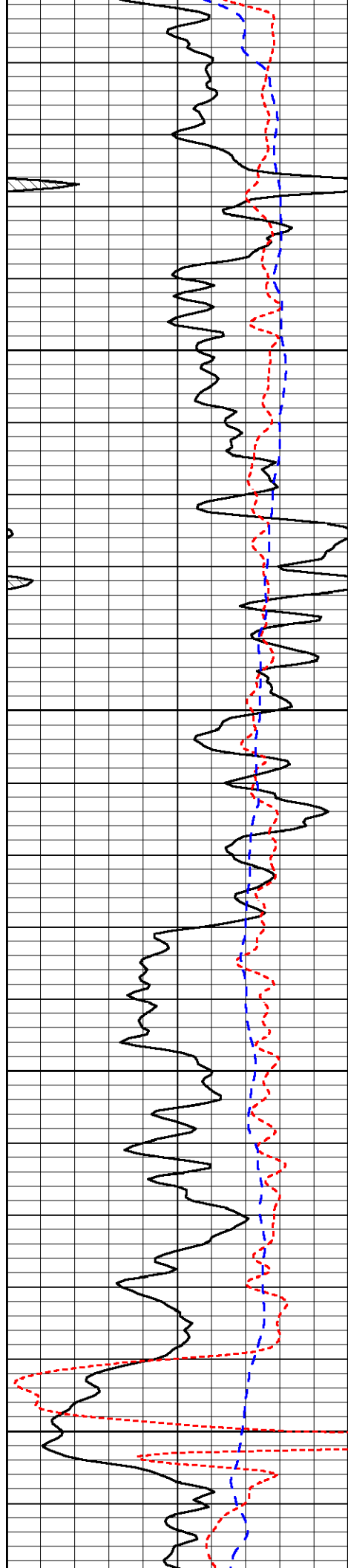
-65

-65

-65

-66



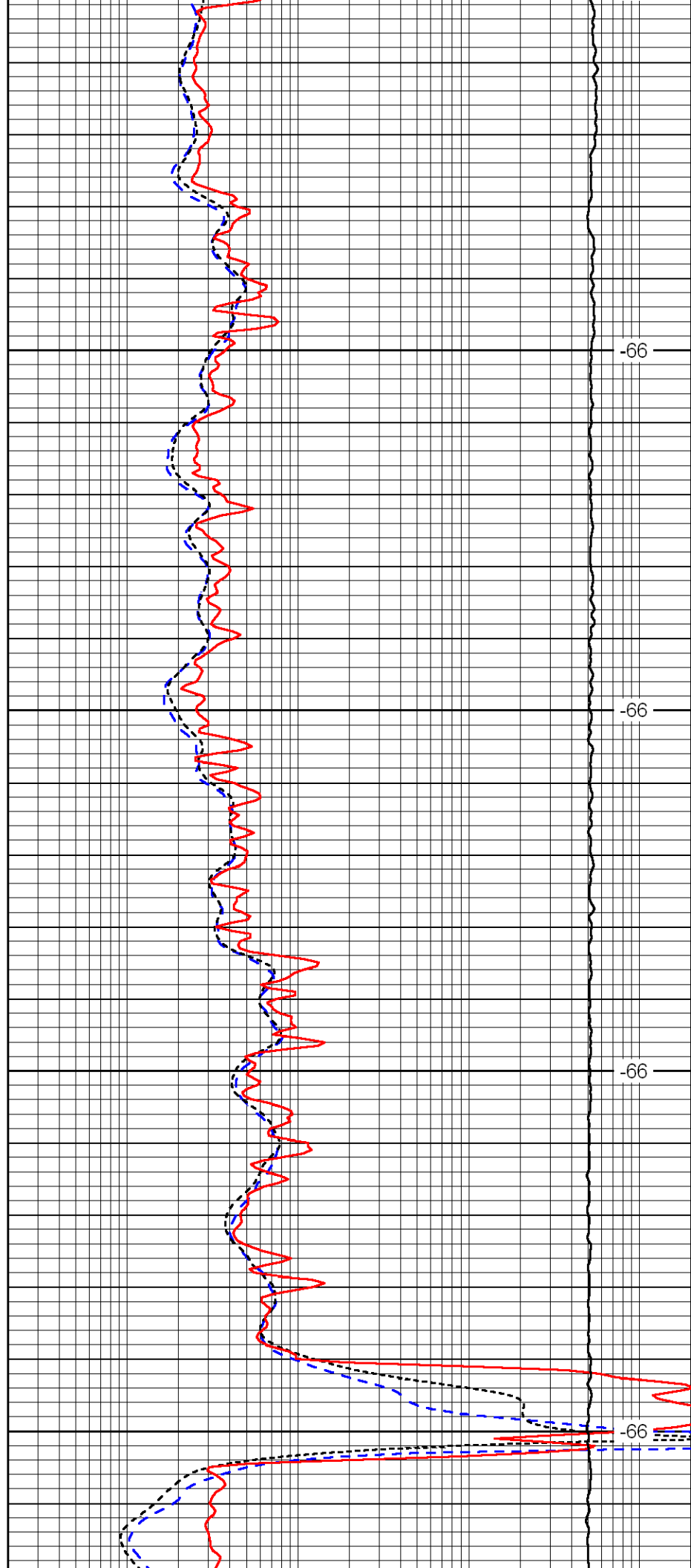


2850

2900

2950

3000

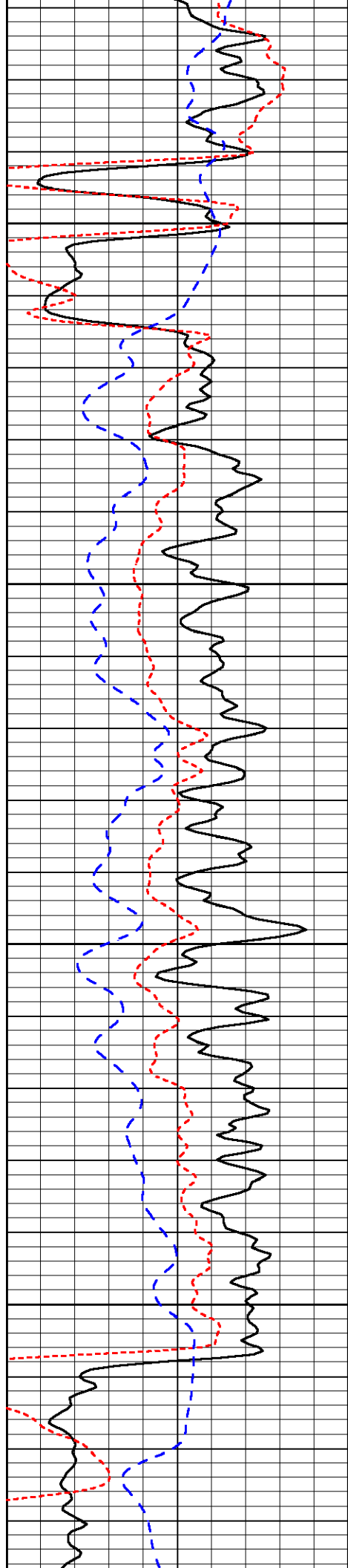


-66

-66

-66

-66

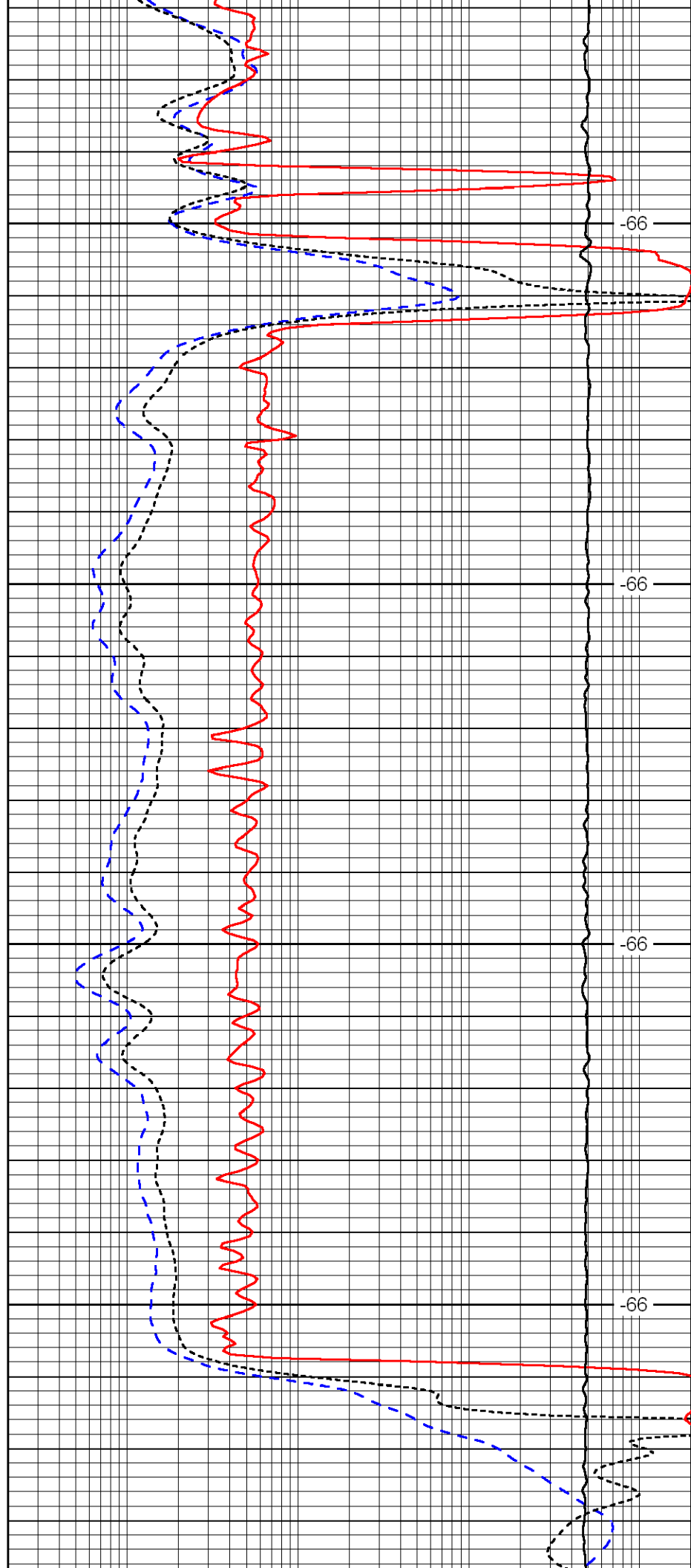


3050

3100

3150

3200

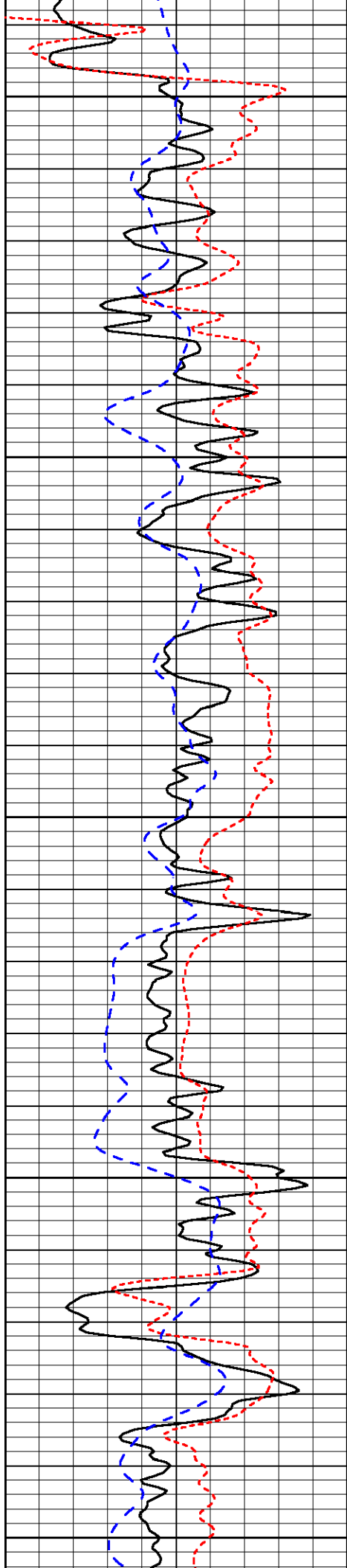


-66

-66

-66

-66



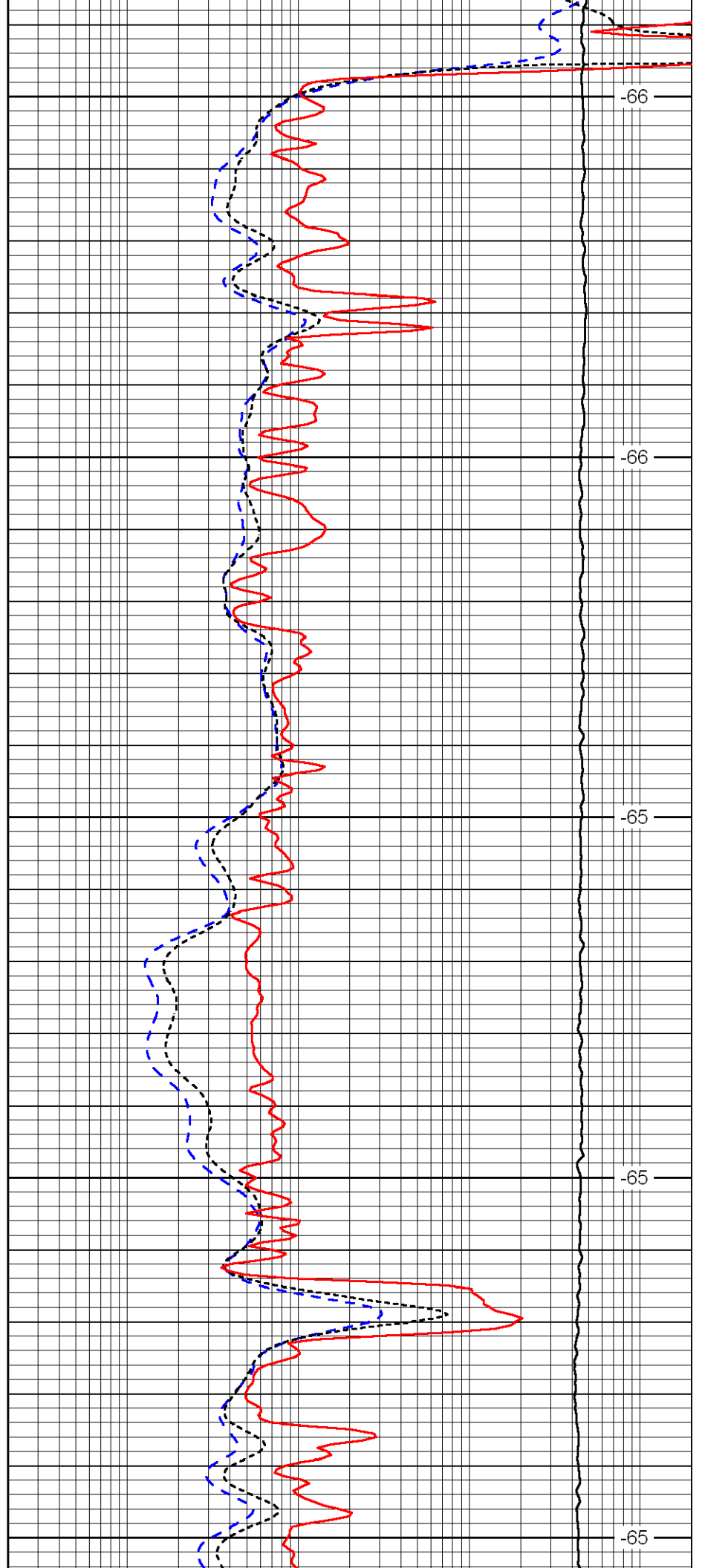
3250

3300

3350

3400

3450



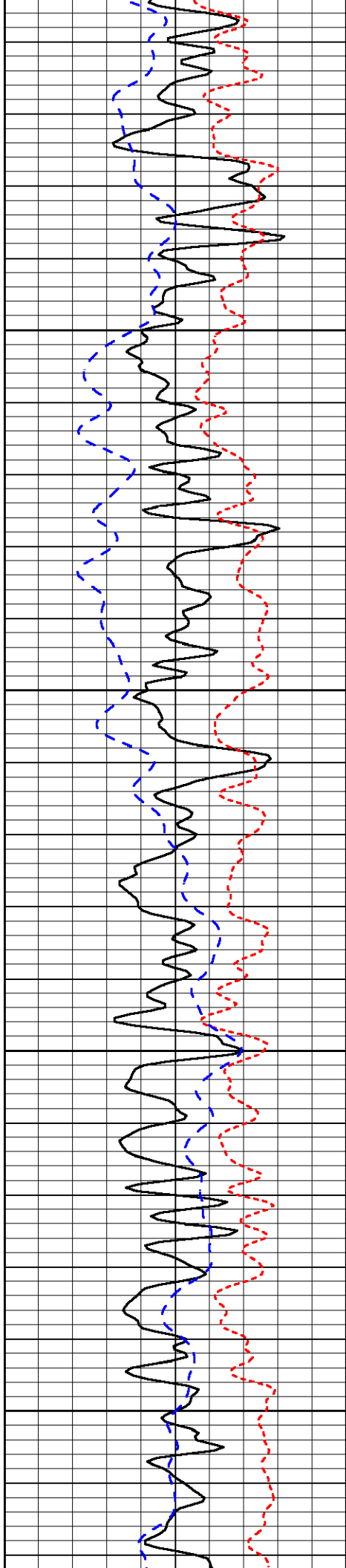
-66

-66

-65

-65

-65

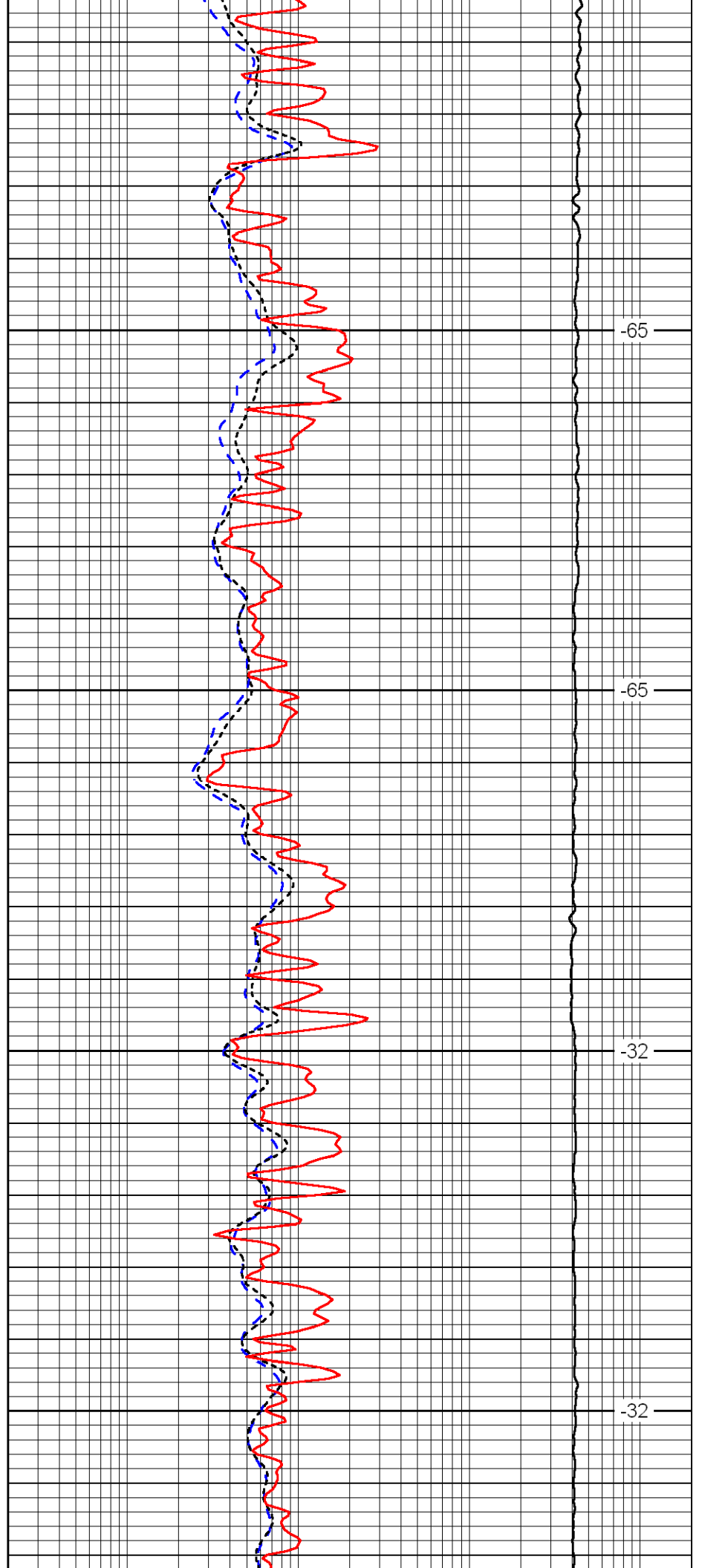


3500

3550

3600

3650

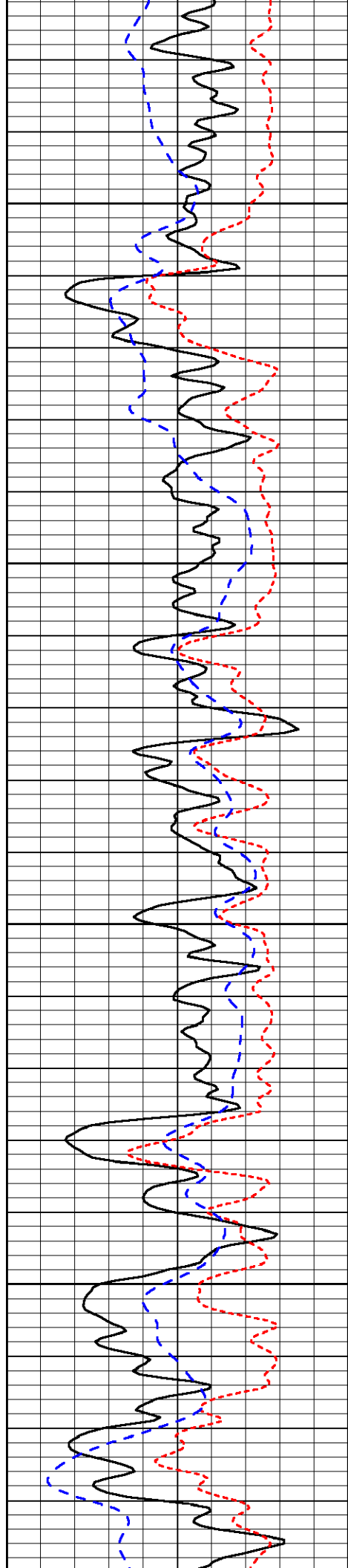


-65

-65

-32

-32

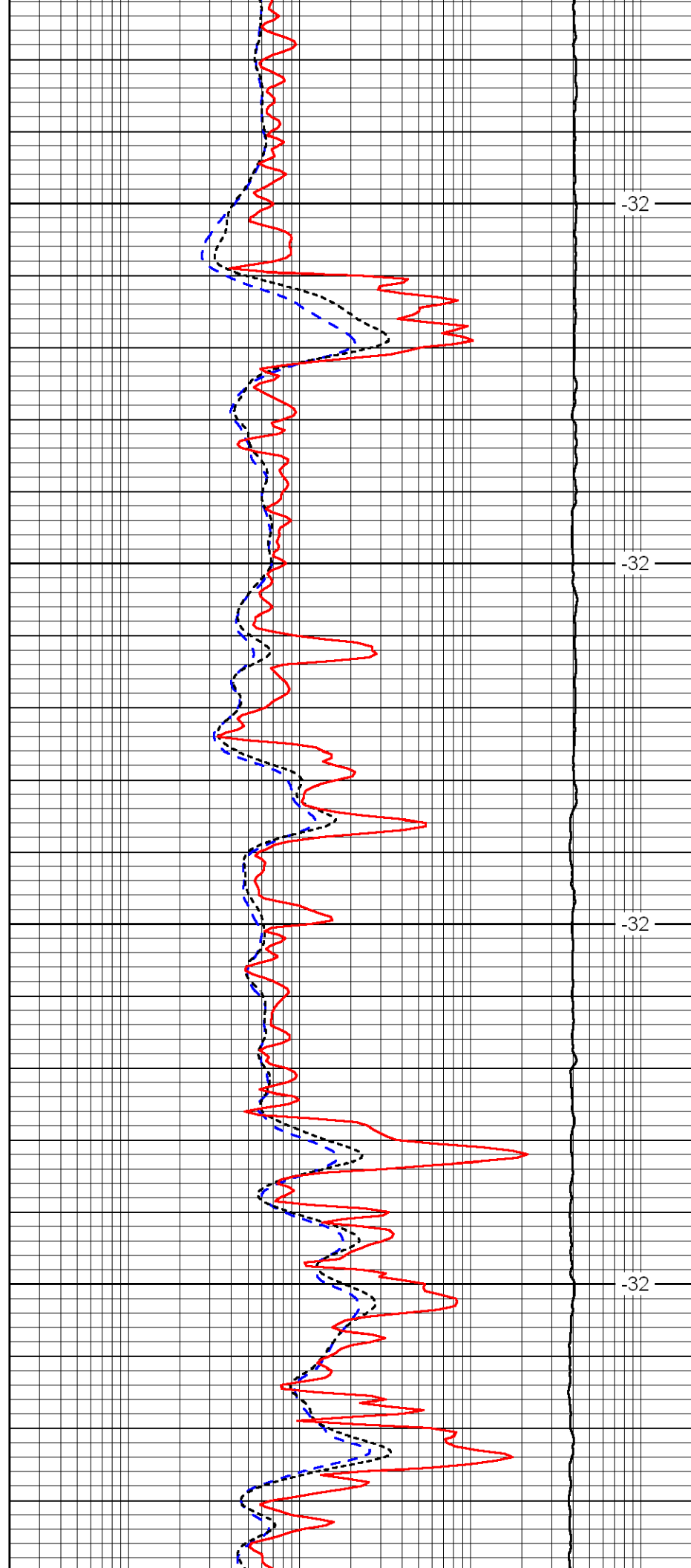


3700

3750

3800

3850

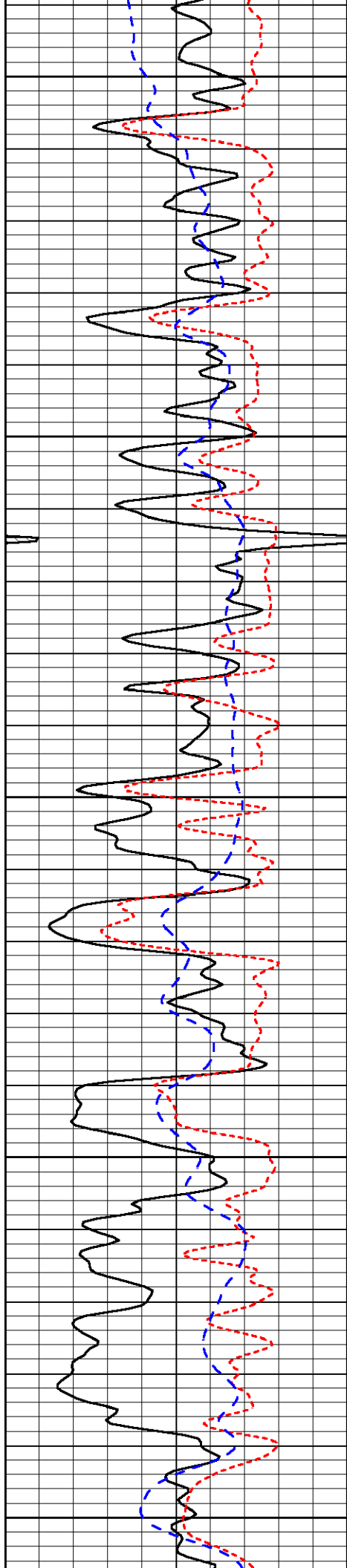


-32

-32

-32

-32



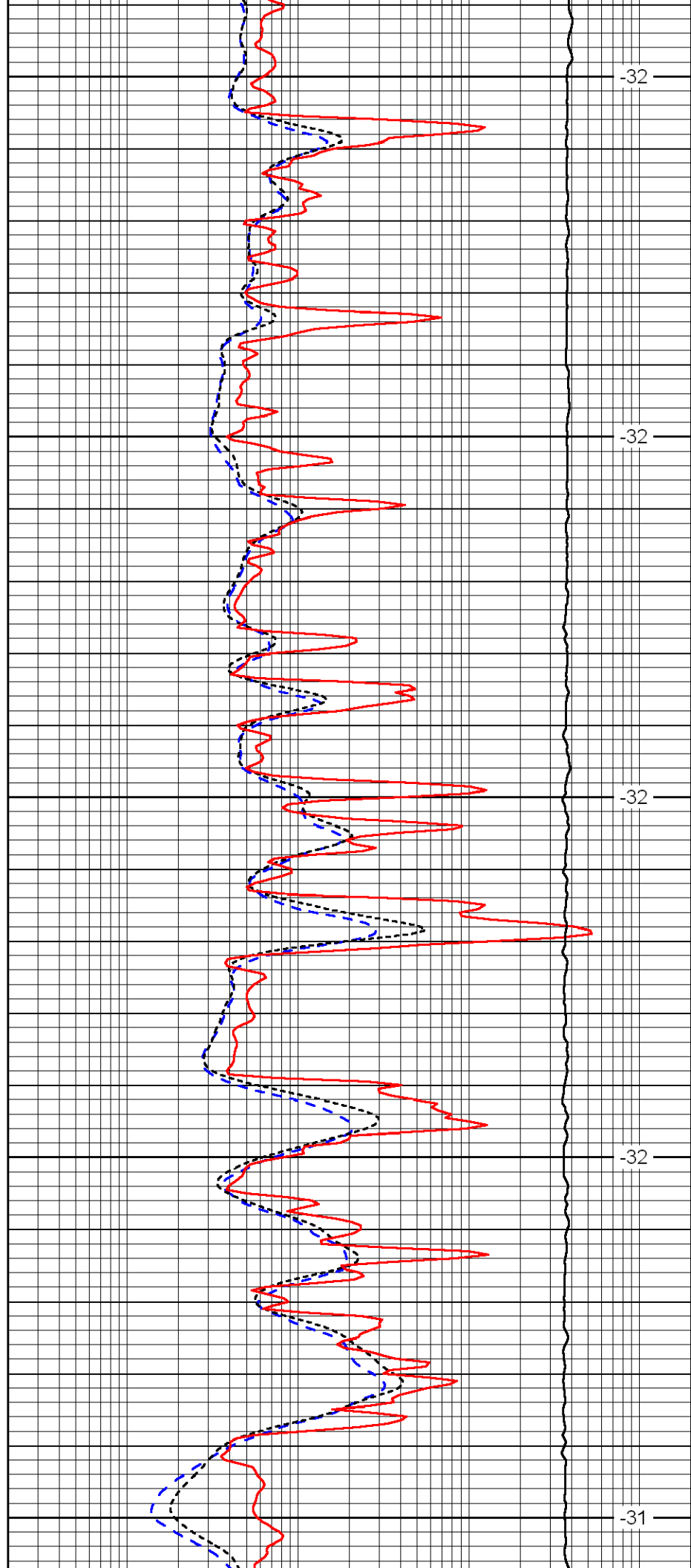
3900

3950

4000

4050

4100



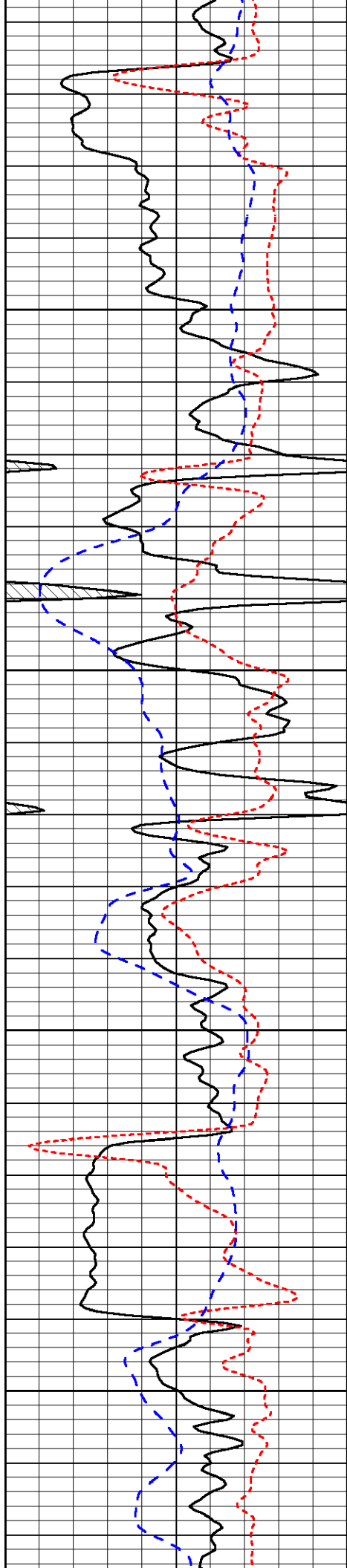
-32

-32

-32

-32

-31

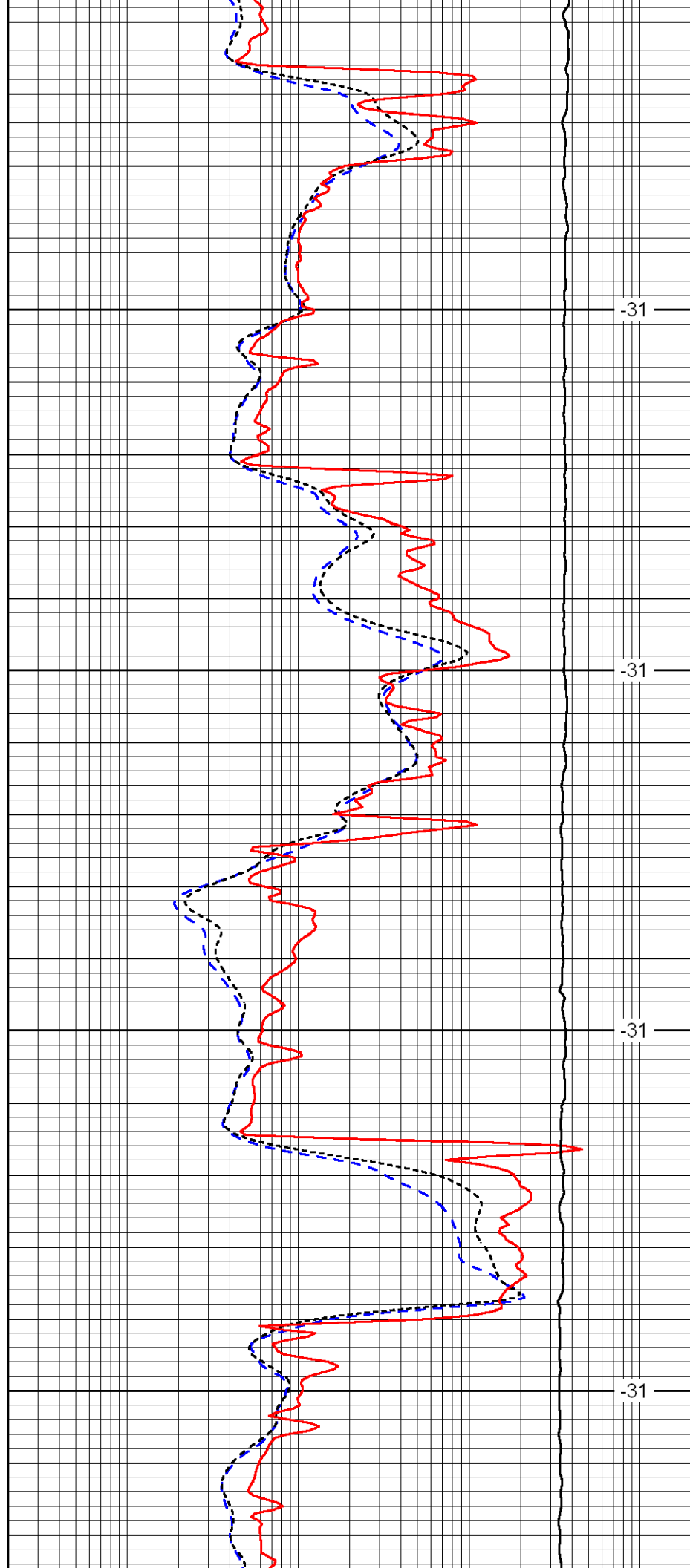


4150

4200

4250

4300

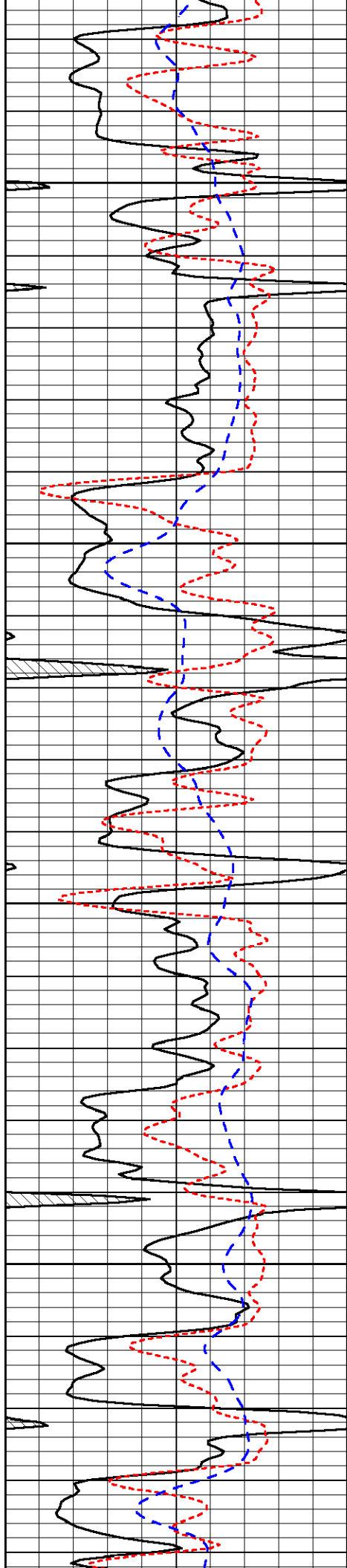


-31

-31

-31

-31

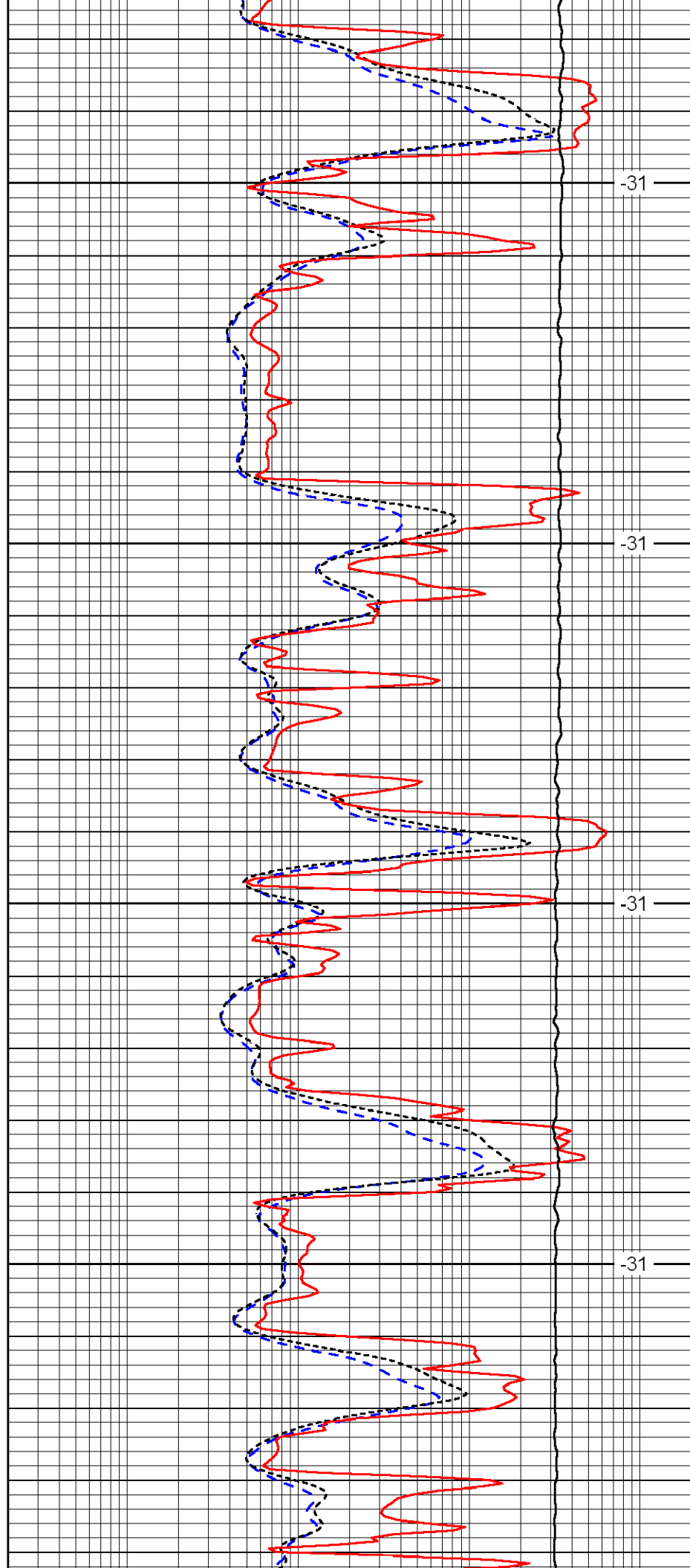


4350

4400

4450

4500

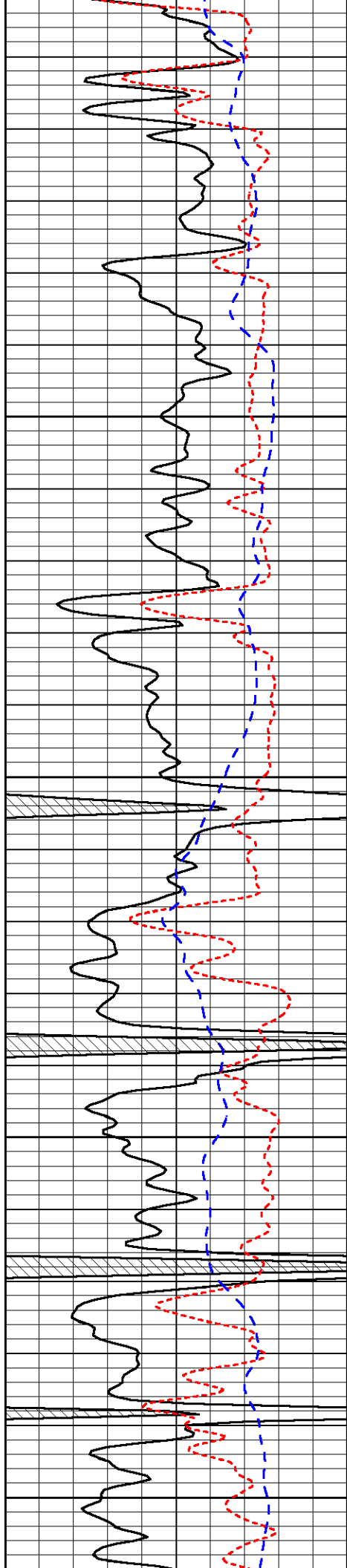


-31

-31

-31

-31



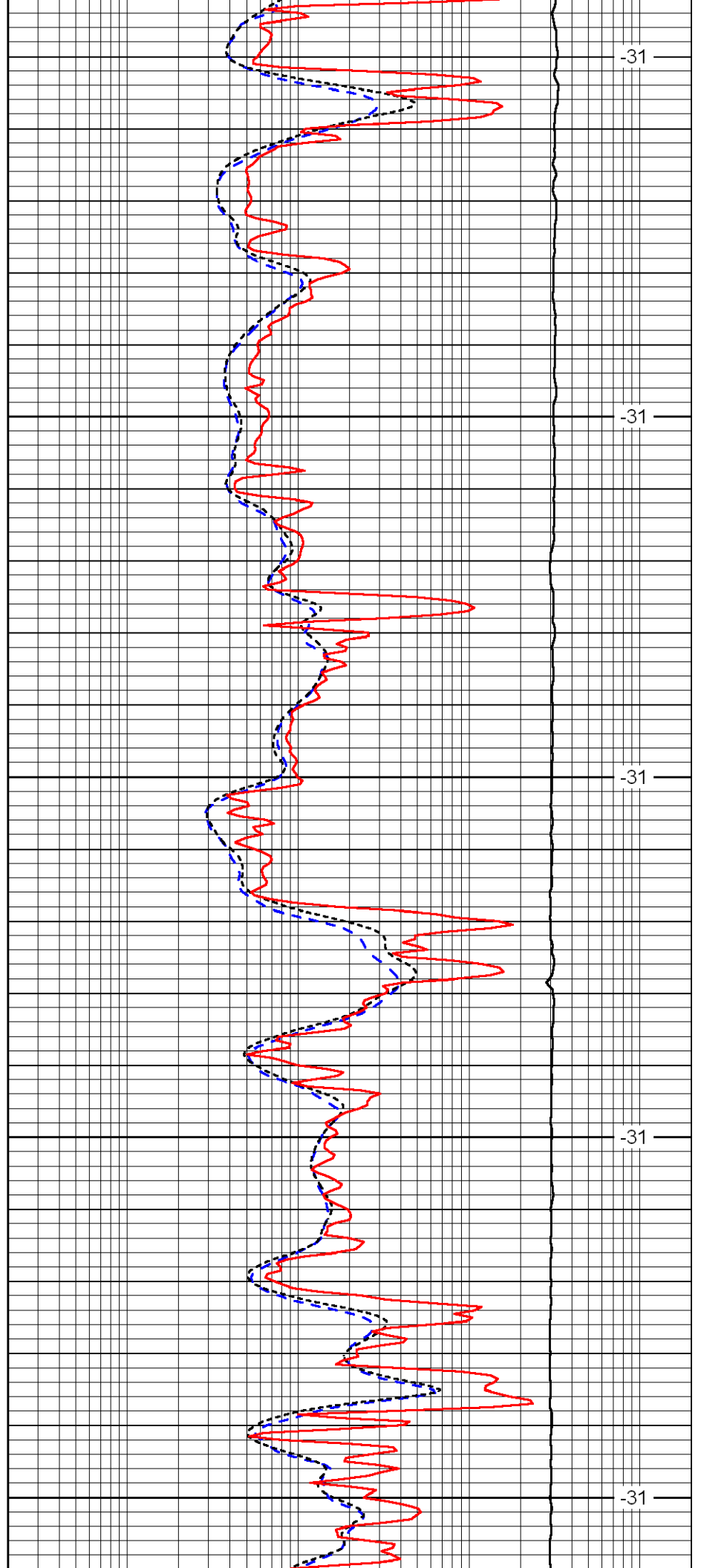
4550

4600

4650

4700

4750



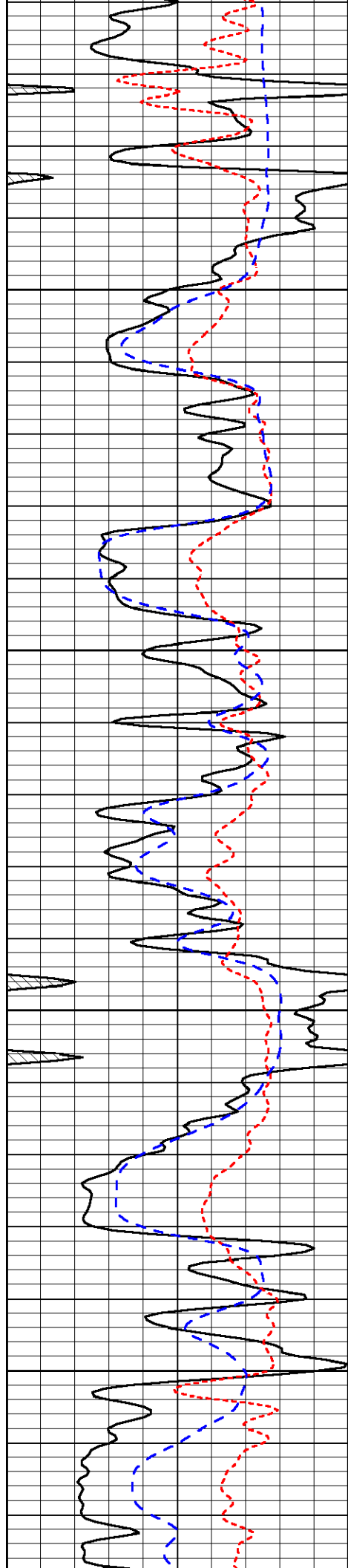
-31

-31

-31

-31

-31

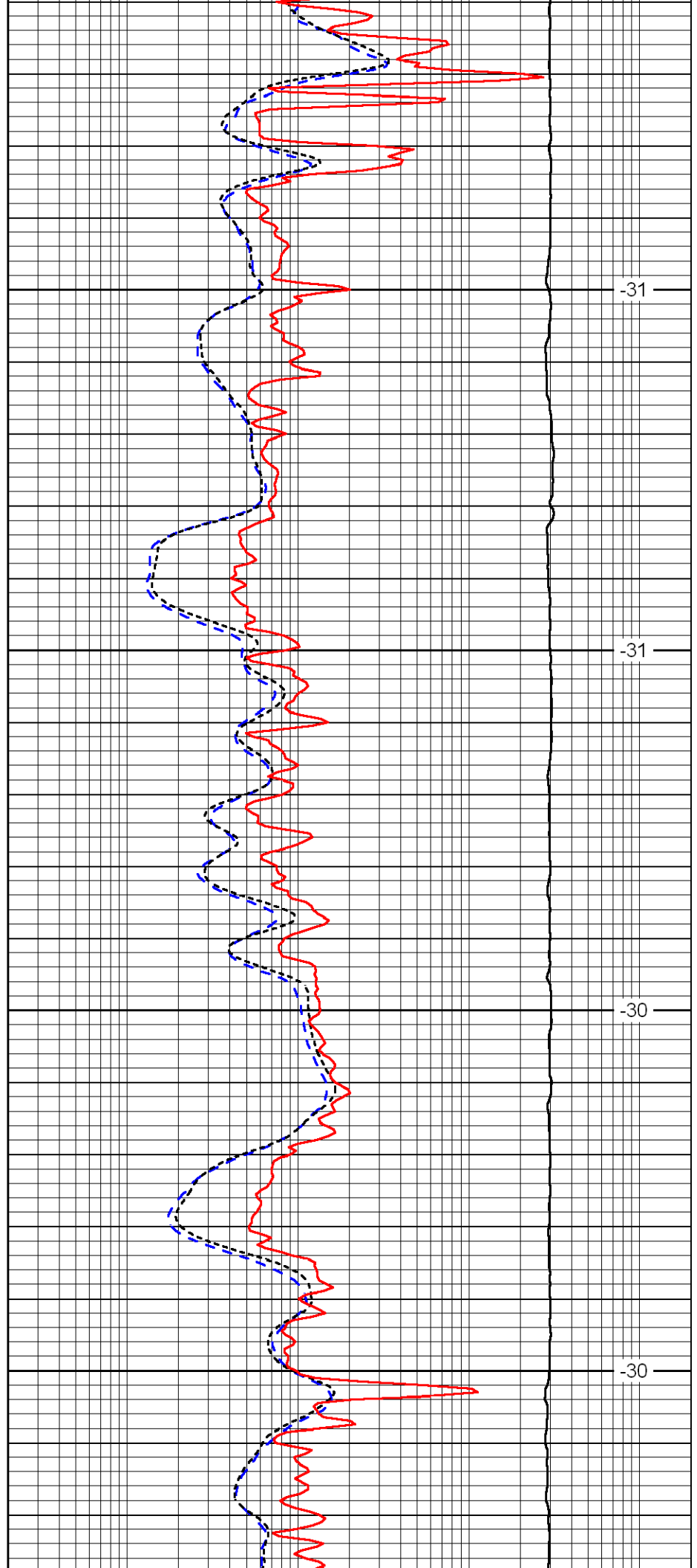


4800

4850

4900

4950

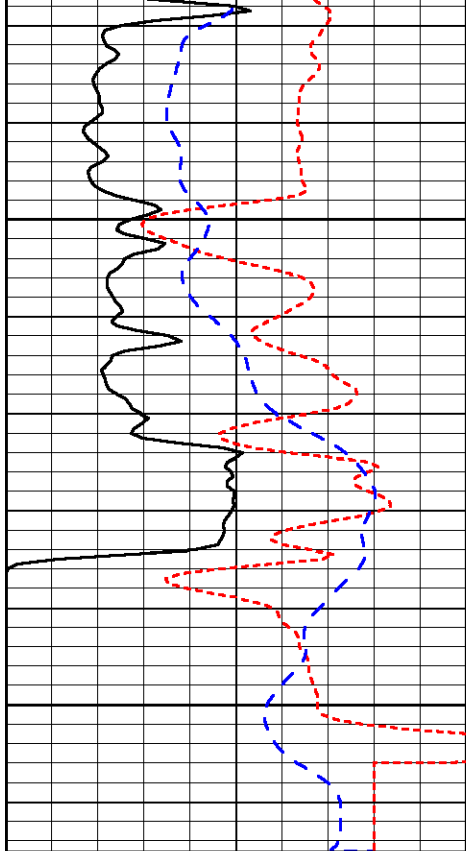


-31

-31

-30

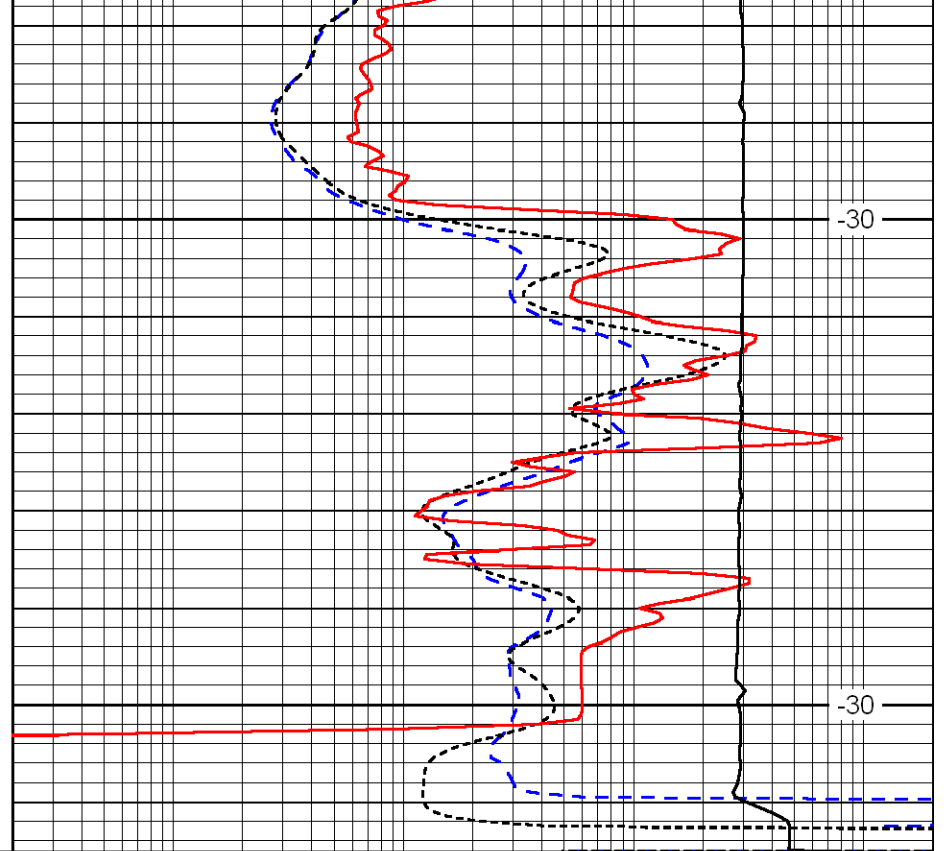
-30



0	Gamma Ray	150
-160	RXO/RT	40
-200	SP	0

5000

5050



0.2	Deep Resistivity	2000
0.2	Medium Resistivity	2000
0.2	Shallow Resistivity	2000
10000	Line Tension	0

-30

-30

LSPD