



Pioneer Energy Services

Borehole Compensated
Sonic Log

15-153-20,910-00-00

API No.

Company Murfin Drilling Company, Inc.

Well PTL No. 1 - 22

Field Wildcat

County Rawlins

State Kansas

Location 1550' FSL & 2210' FEL

Sec: 22 Twp: 2 S Rge: 36 W

Permanent Datum Ground Level Elevation 3334

Log Measured From Kelly Bushing 10 Ft. Above Perm. Datum

Drilling Measured From Kelly Bushing

Other Services
CNL/CDL
MEL/DIL
Elevation
K.B. 3344
D.F. 3334
G.L. 3334

Date 11/07/2012

Run Number Two

Type Log BHC Sonic

Depth Driller 5060

Depth Logger 5060

Bottom Logged Interval 5049

Top Logged Interval 350

Type Fluid In Hole Chemical

Salinity, PPM CL 1400

Density 9.3

Level Full

Max. Rec. Temp. F 127

Operating Rig Time 5 Hours

Equipment -- Location 108 Hays

Recorded By D. Martin

Witnessed By Robert Stolzle

Borehole Record

Run No Bit From To

One 12.25 00 388

Two 7.875 388 TD

Casing Record

From To

Size Wgt. 23#

From To

<<< Fold Here >>>

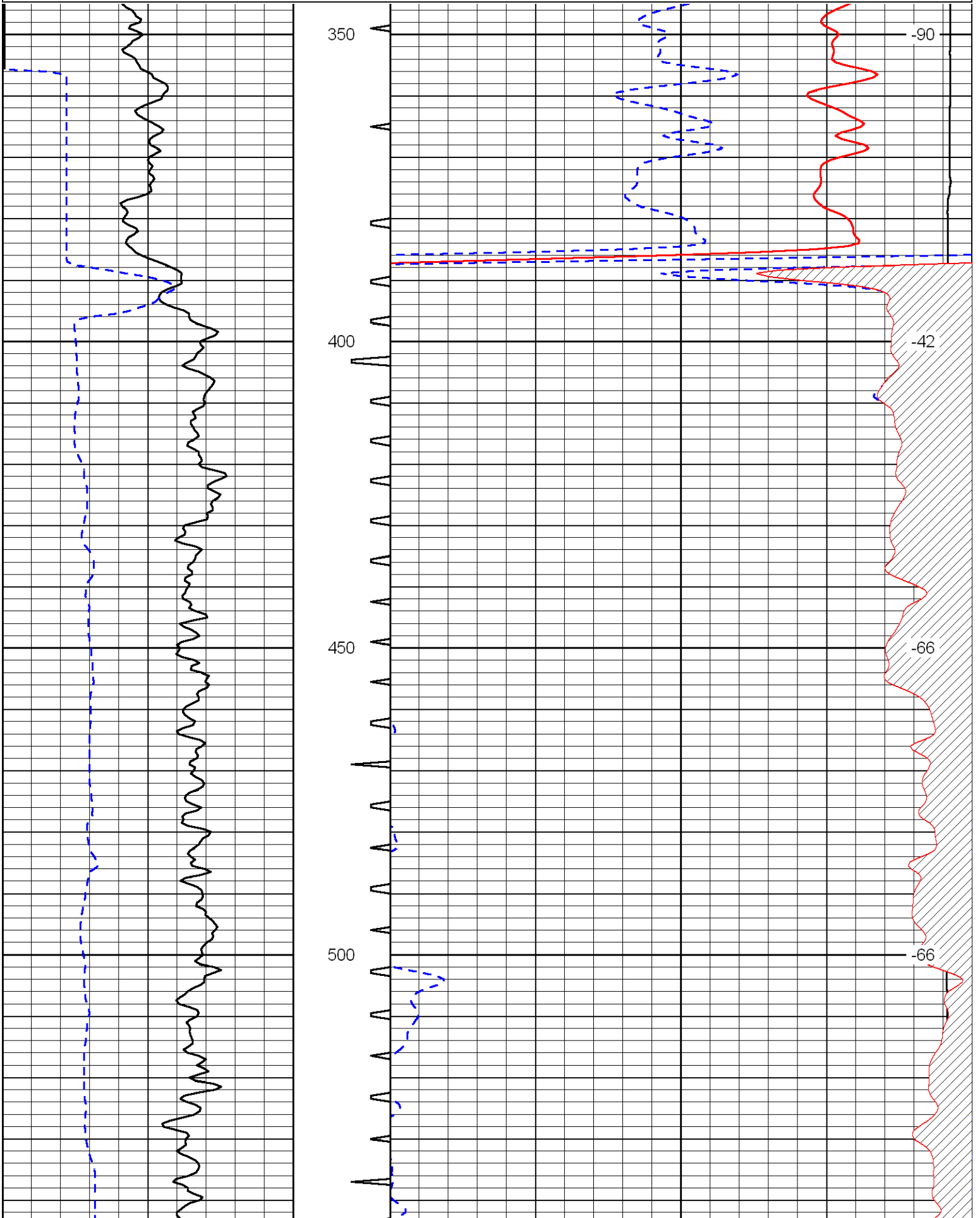
All interpretations are opinions based on inferences from electrical or other measurements and we cannot and do not guarantee the accuracy or correctness of any interpretation, and we shall not, except in the case of gross or willful negligence on our part, be liable or responsible for any loss, costs, damages, or expenses incurred or sustained by anyone resulting from any interpretation made by any of our officers, agents or employees. These interpretations are also subject to our general terms and conditions set out in our current Price Schedule.

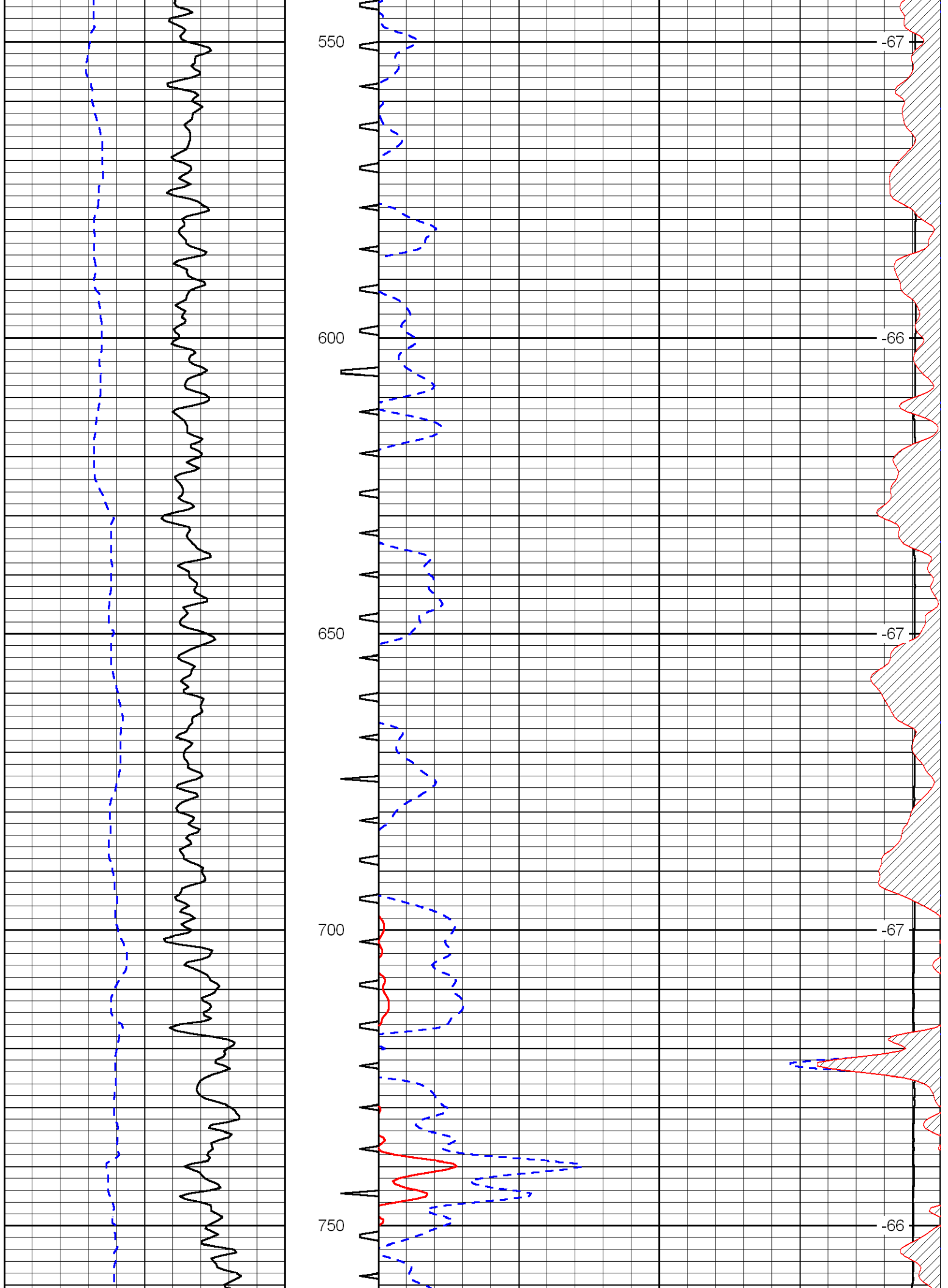
Comments

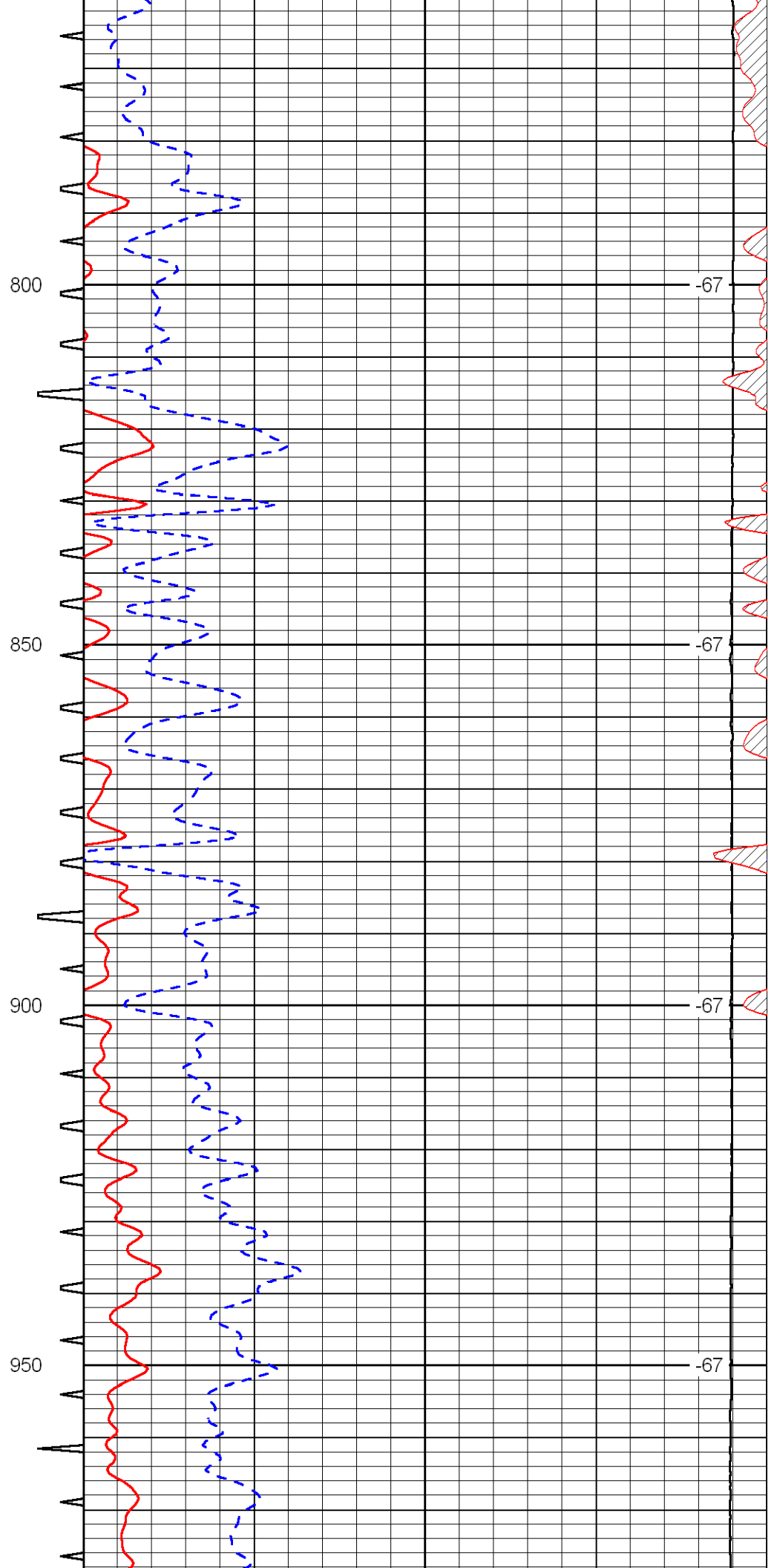
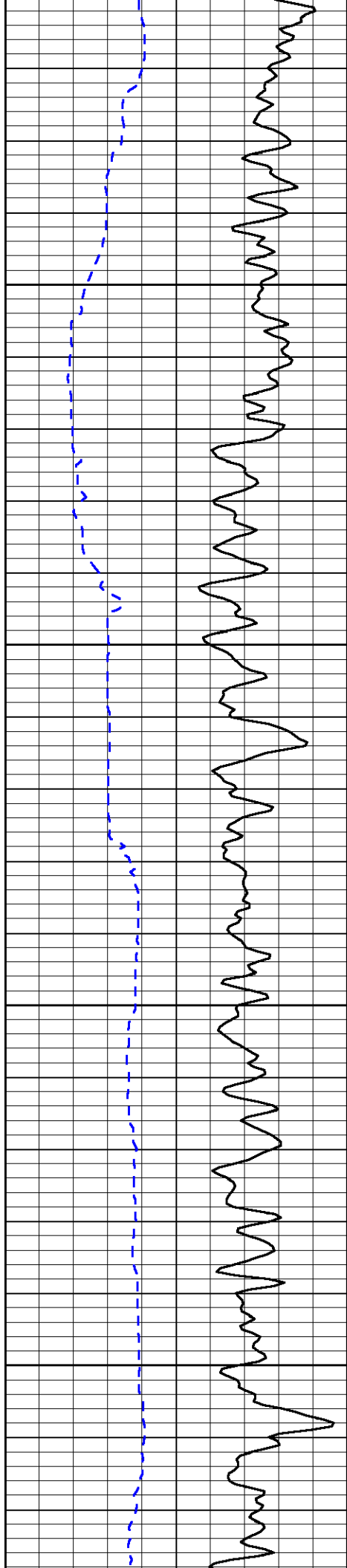
Thank you for using Log-Tech, Inc.
(785) 625-3858
Atwood, KS
16 W to 5 Rd., 5 N to U Rd.,
1/2 W, N Into

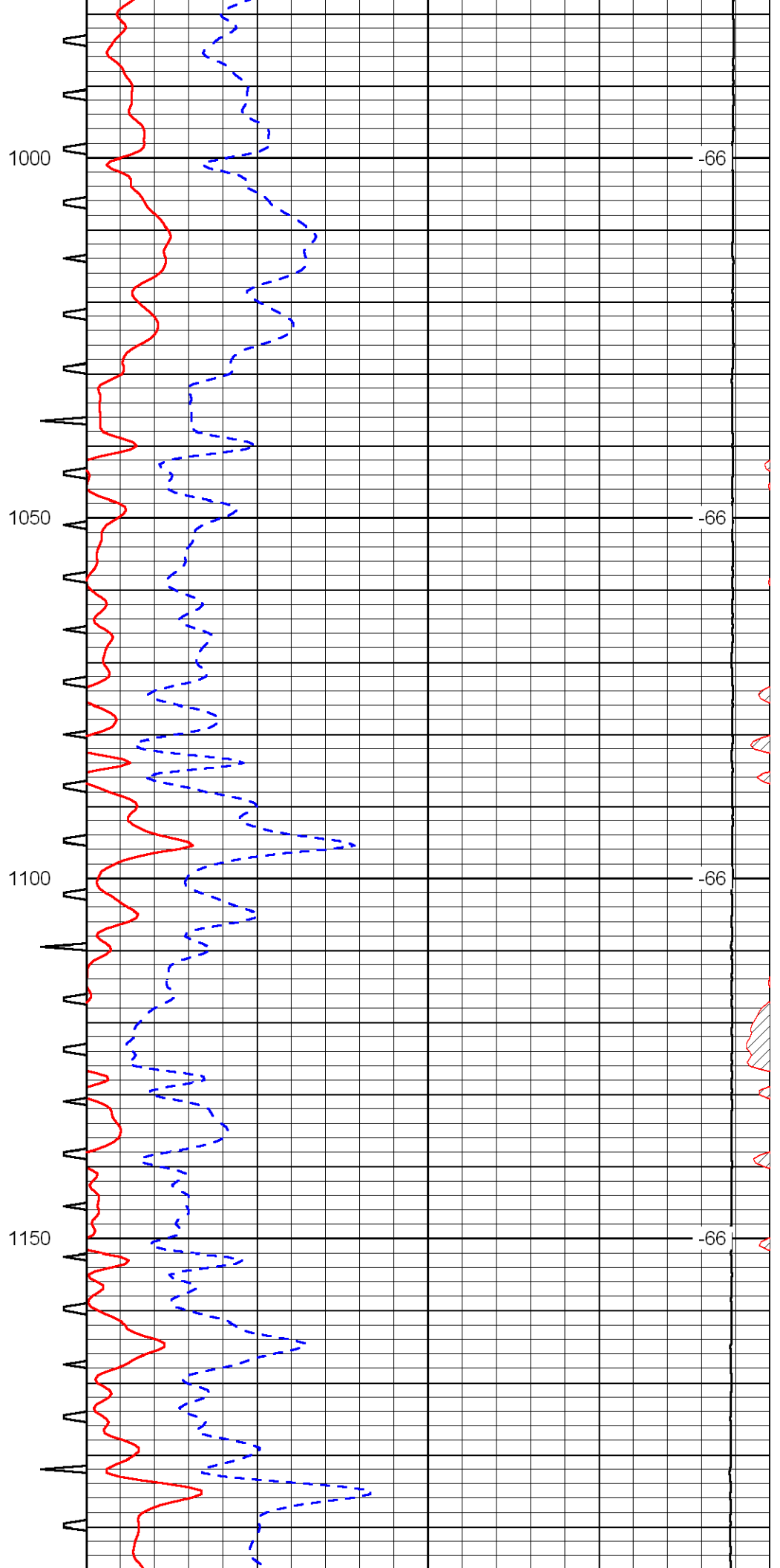
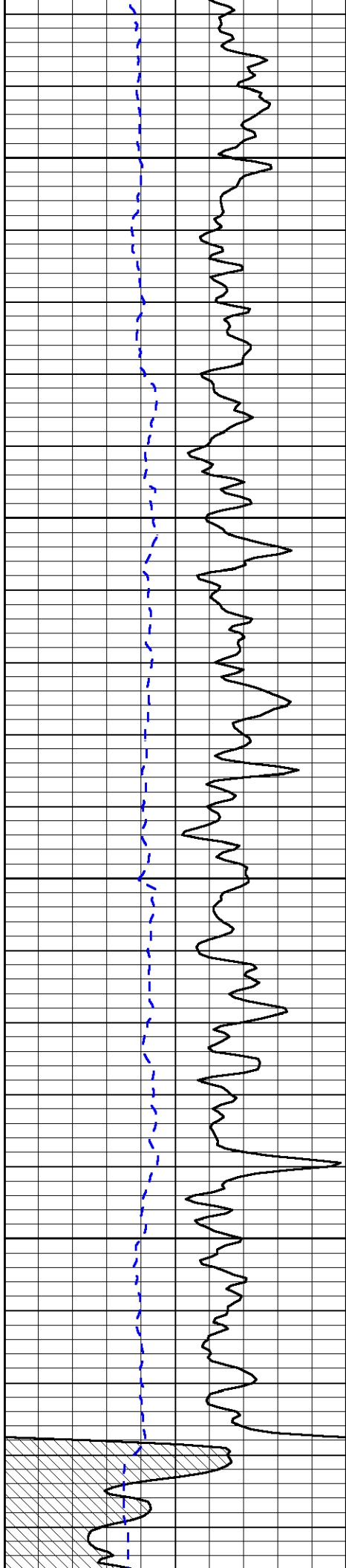
Database File: murfhd.db
Dataset Pathname: DIL/murfstk
Presentation Format: sonic
Dataset Creation: Tue Nov 06 06:48:09 2012
Charted by: Depth in Feet scaled 1:240

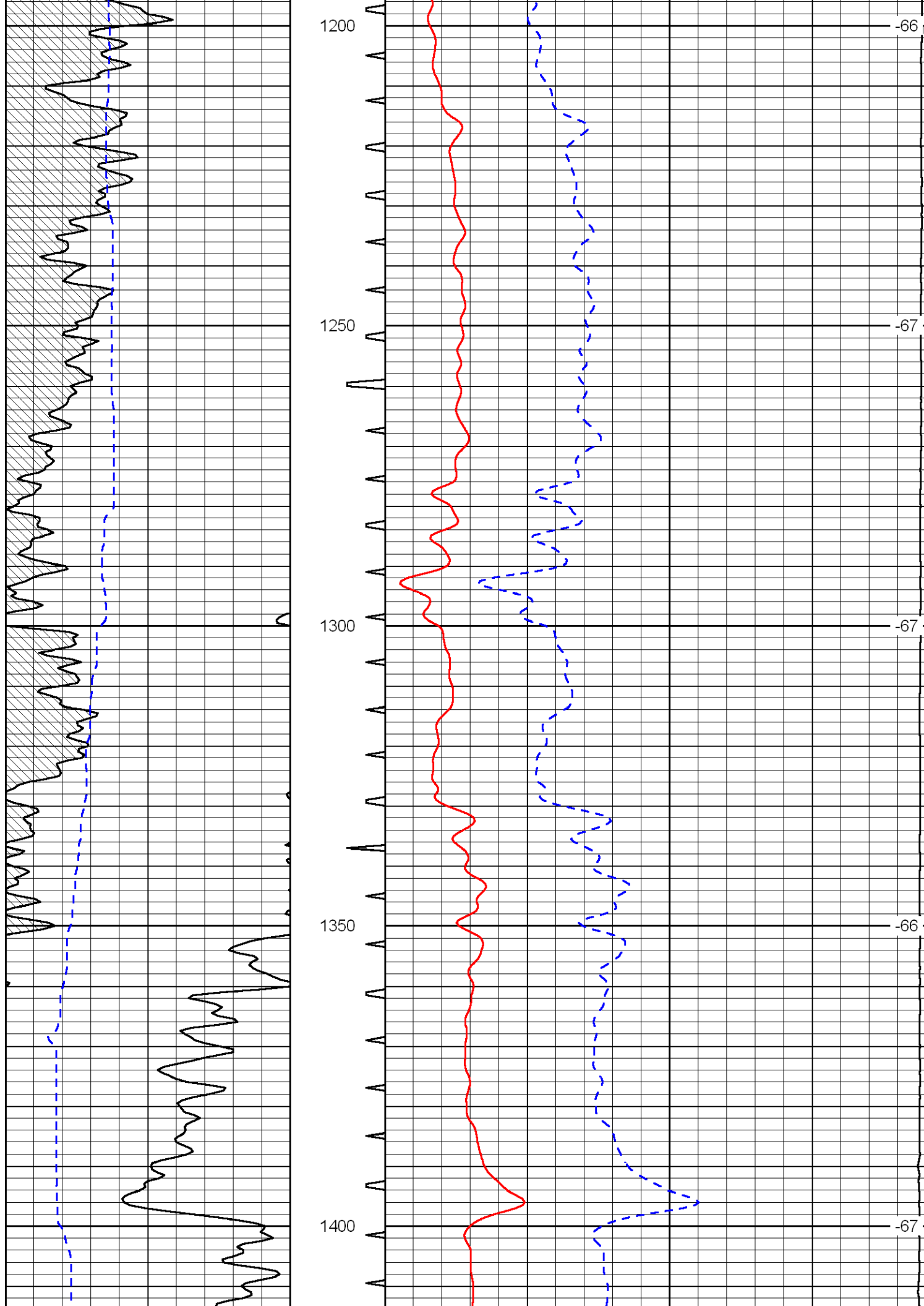
0	Gamma Ray	150	Sonic Int	140	Delta Time (usec/ft)	40
150	Gamma Ray	300	5	0	Sonic Porosity	-10
6	dCAL (GAPI)	16		15000	LTEN (lb)	0
						LSPD

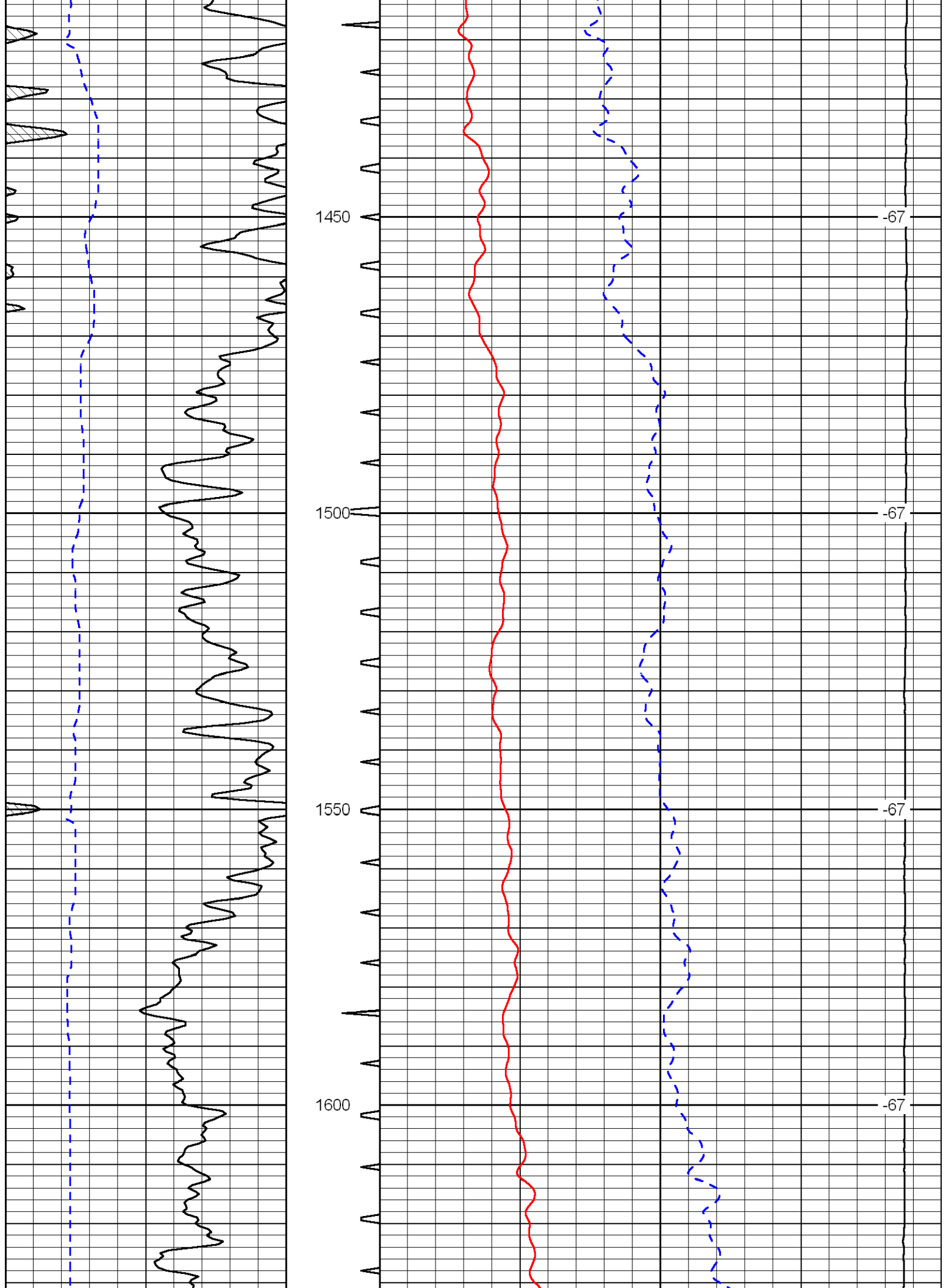


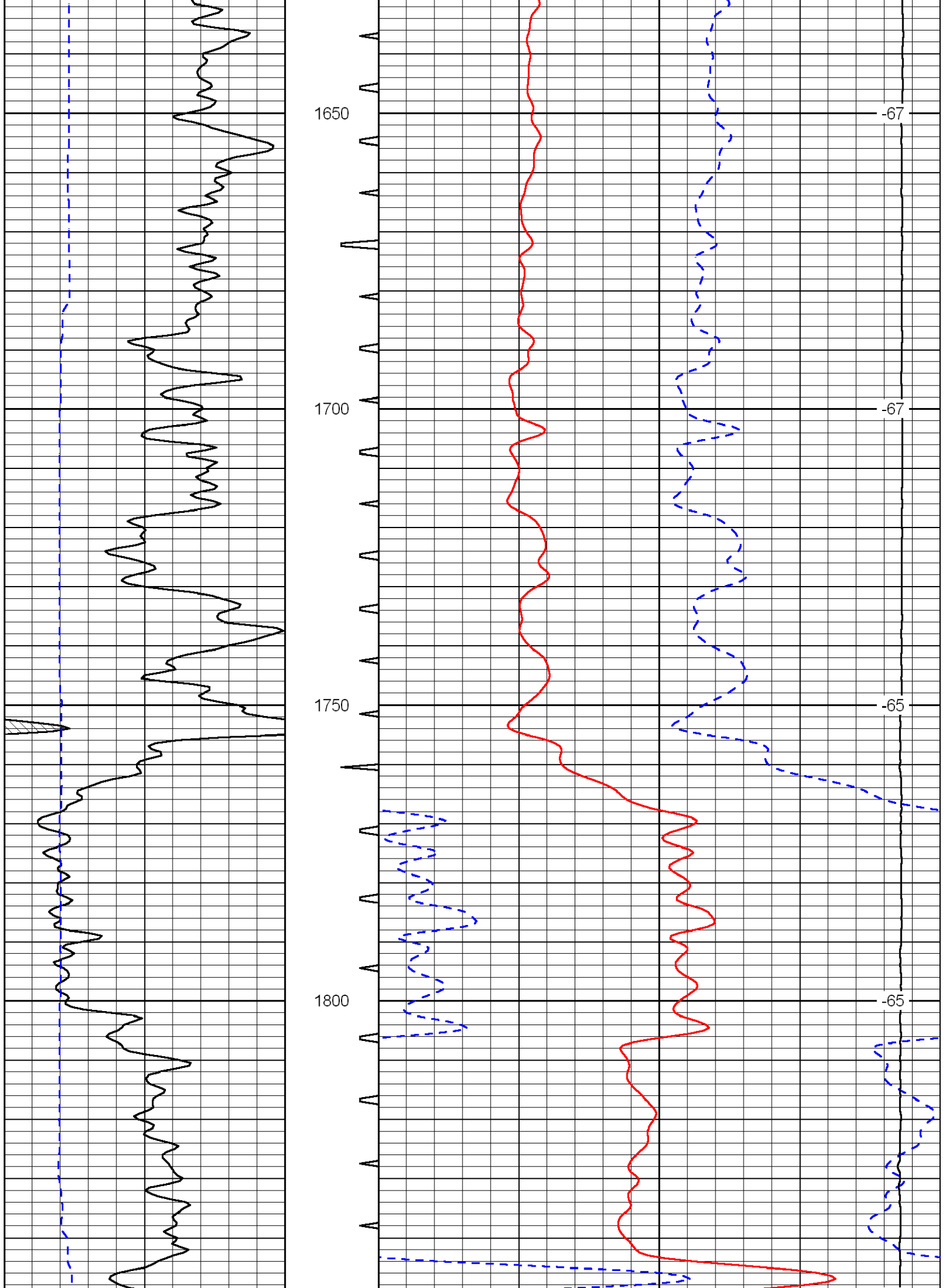


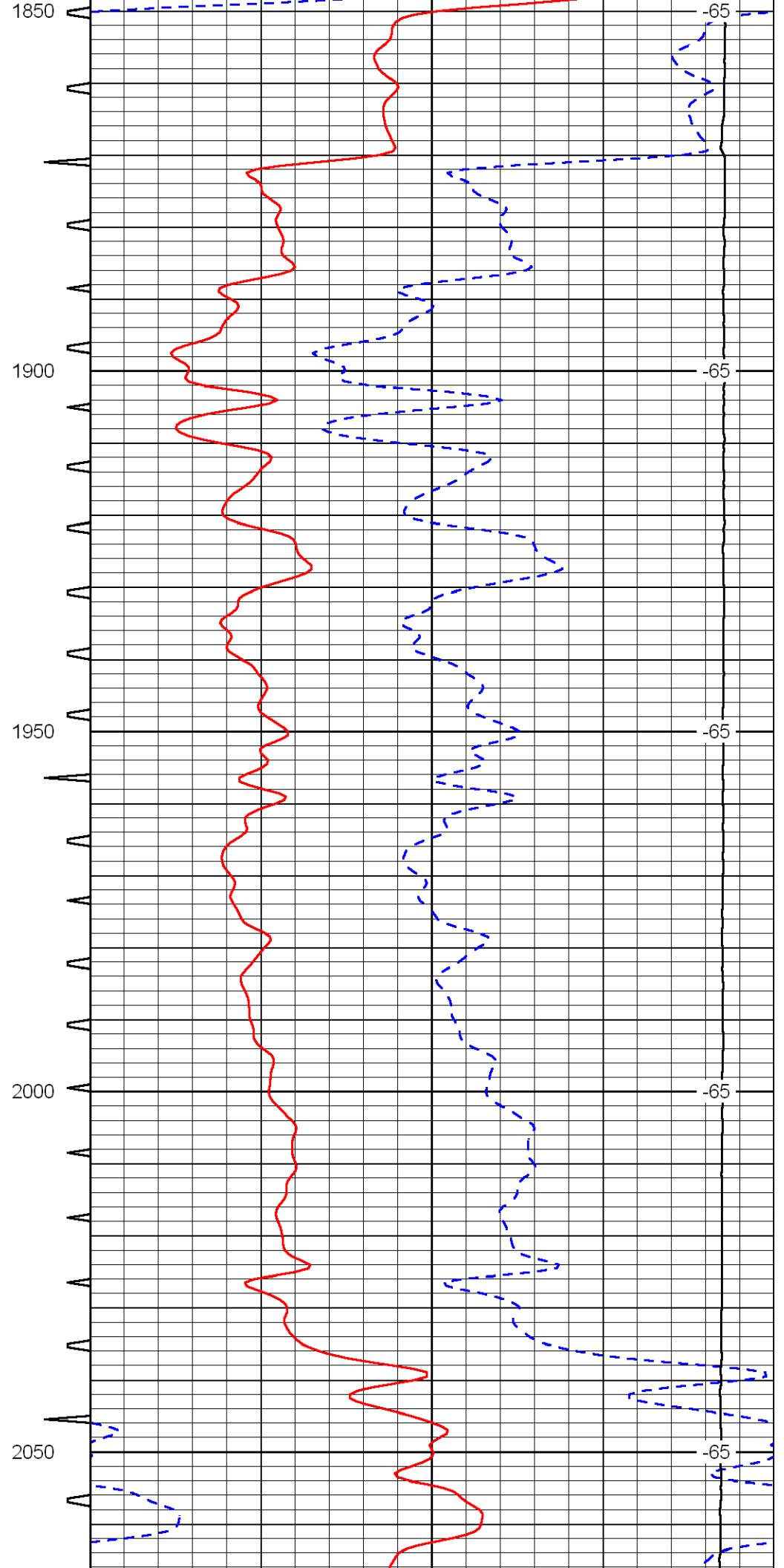
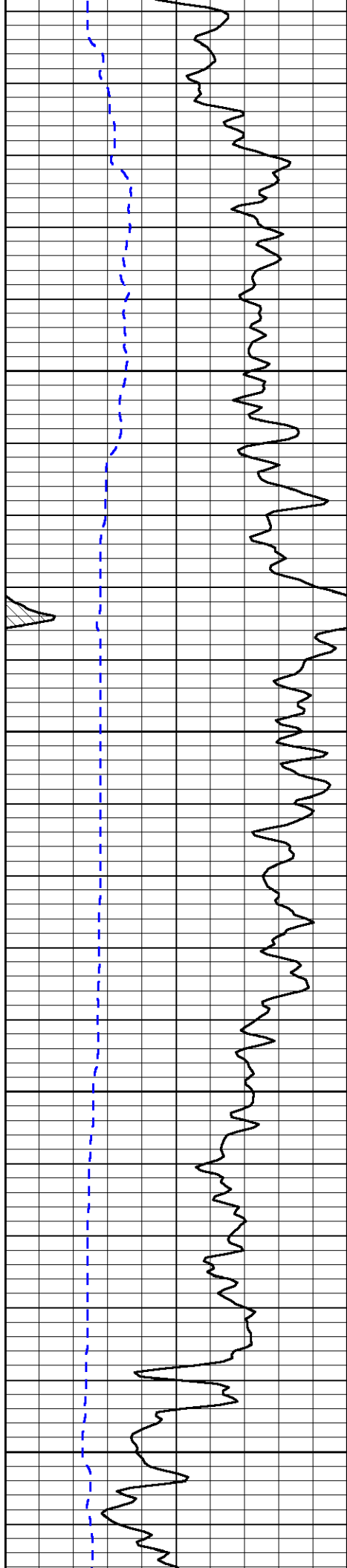


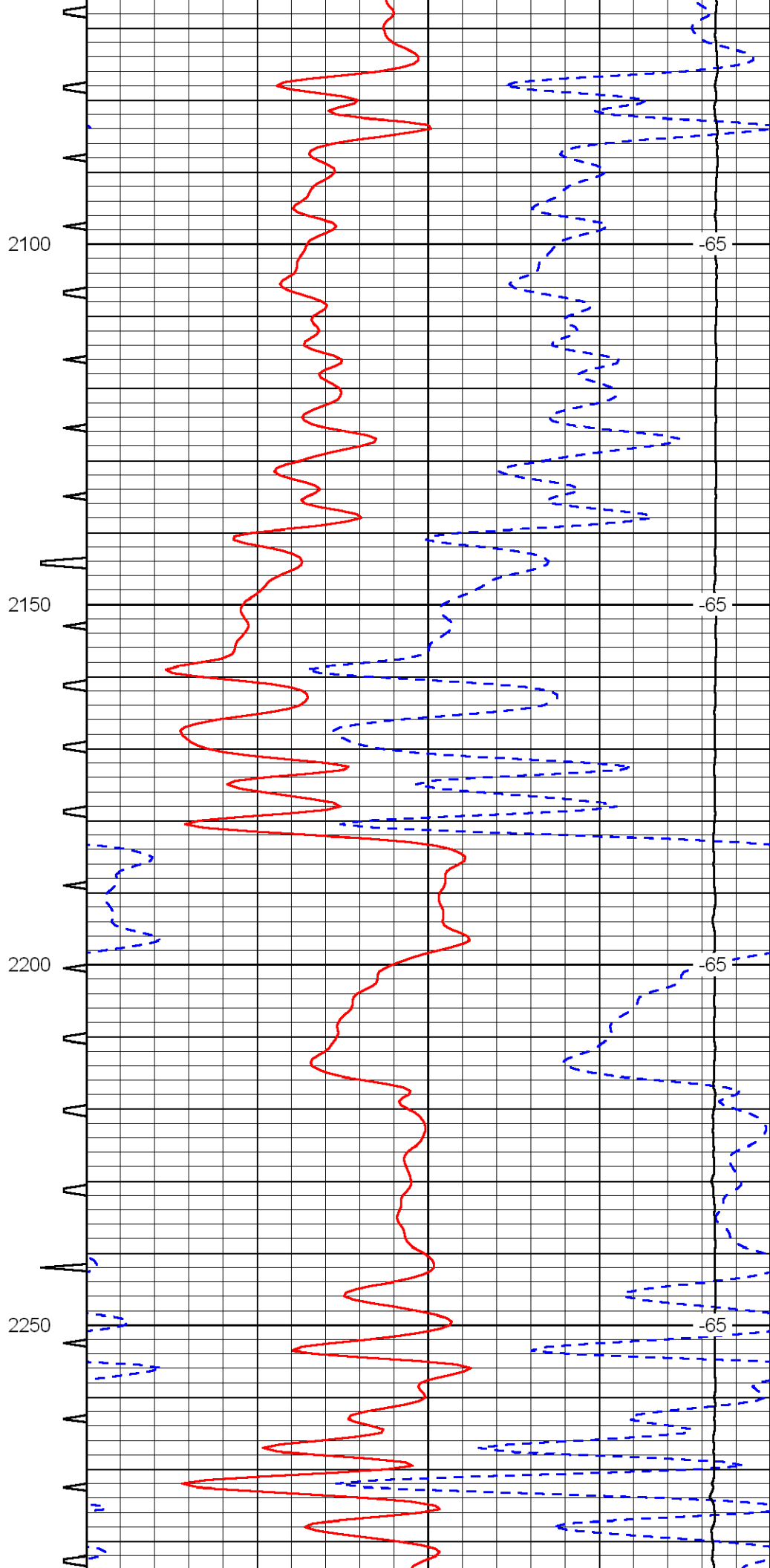
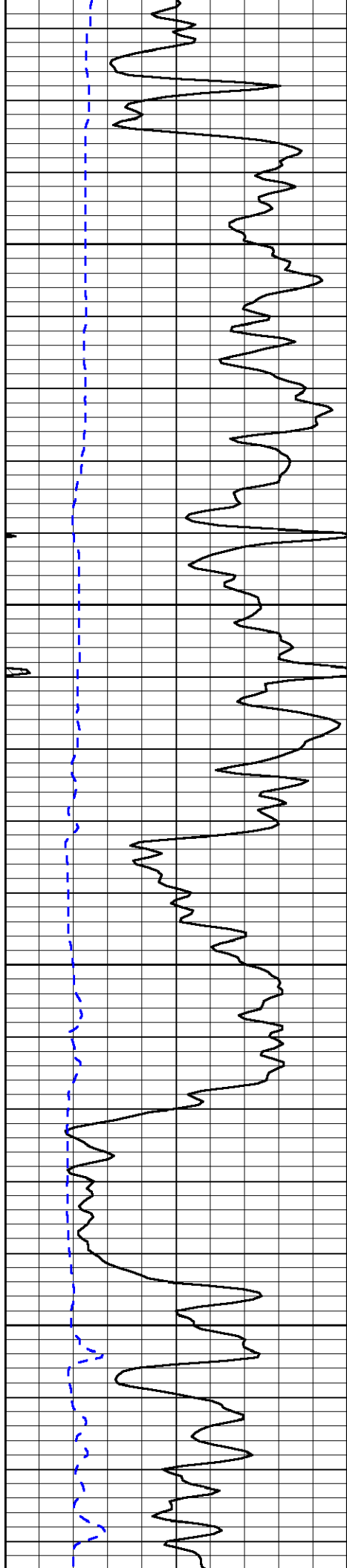


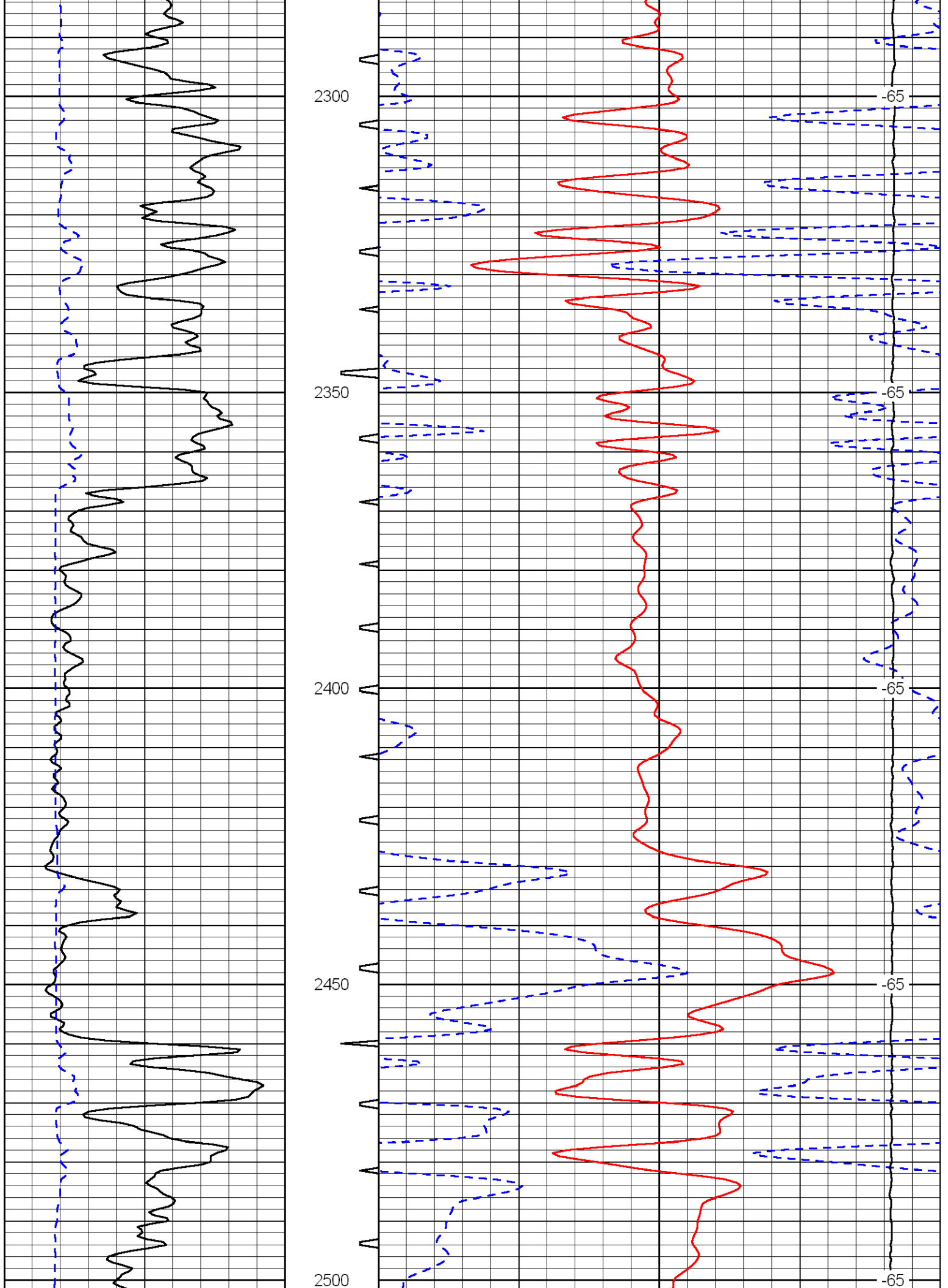


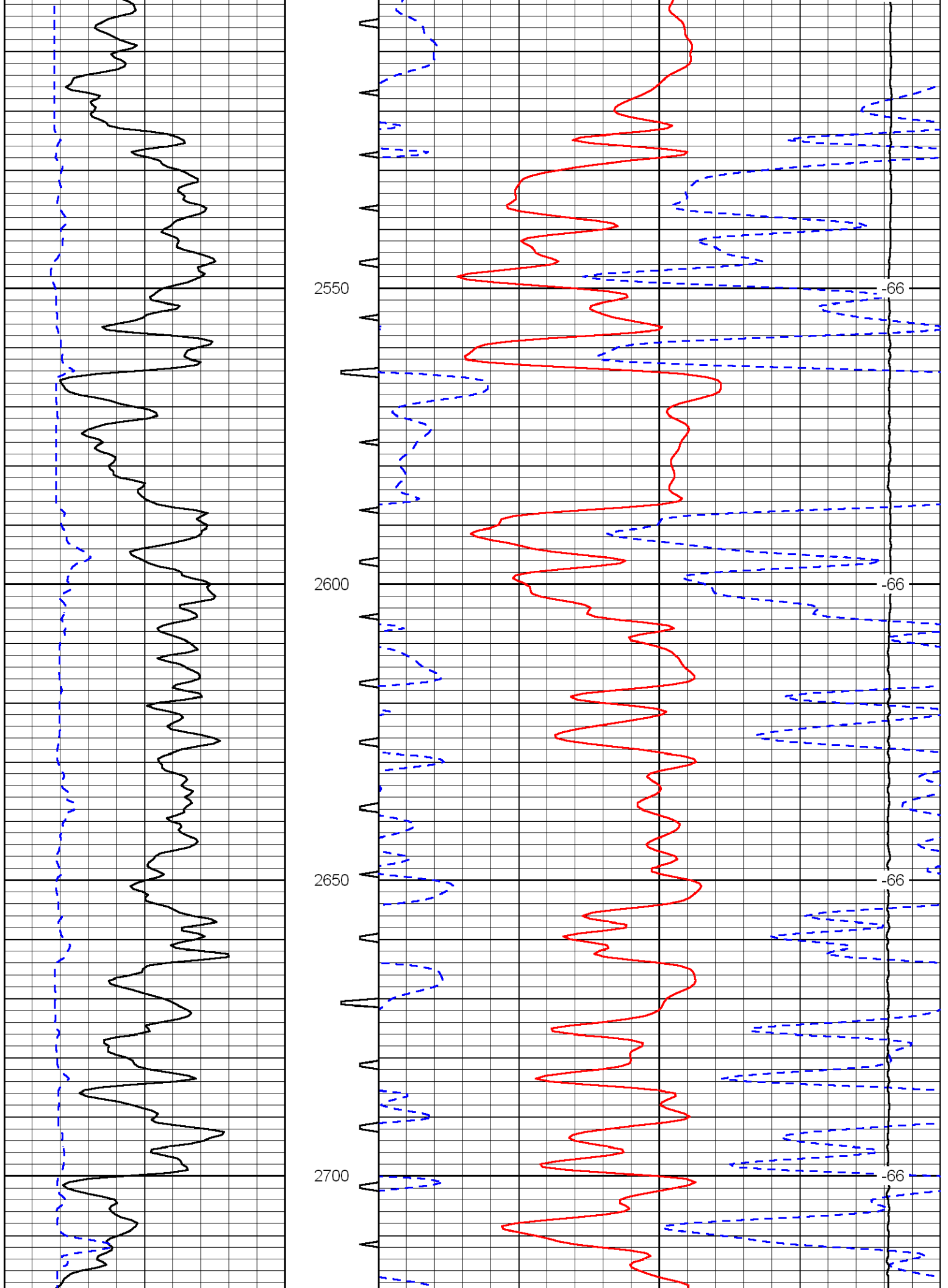


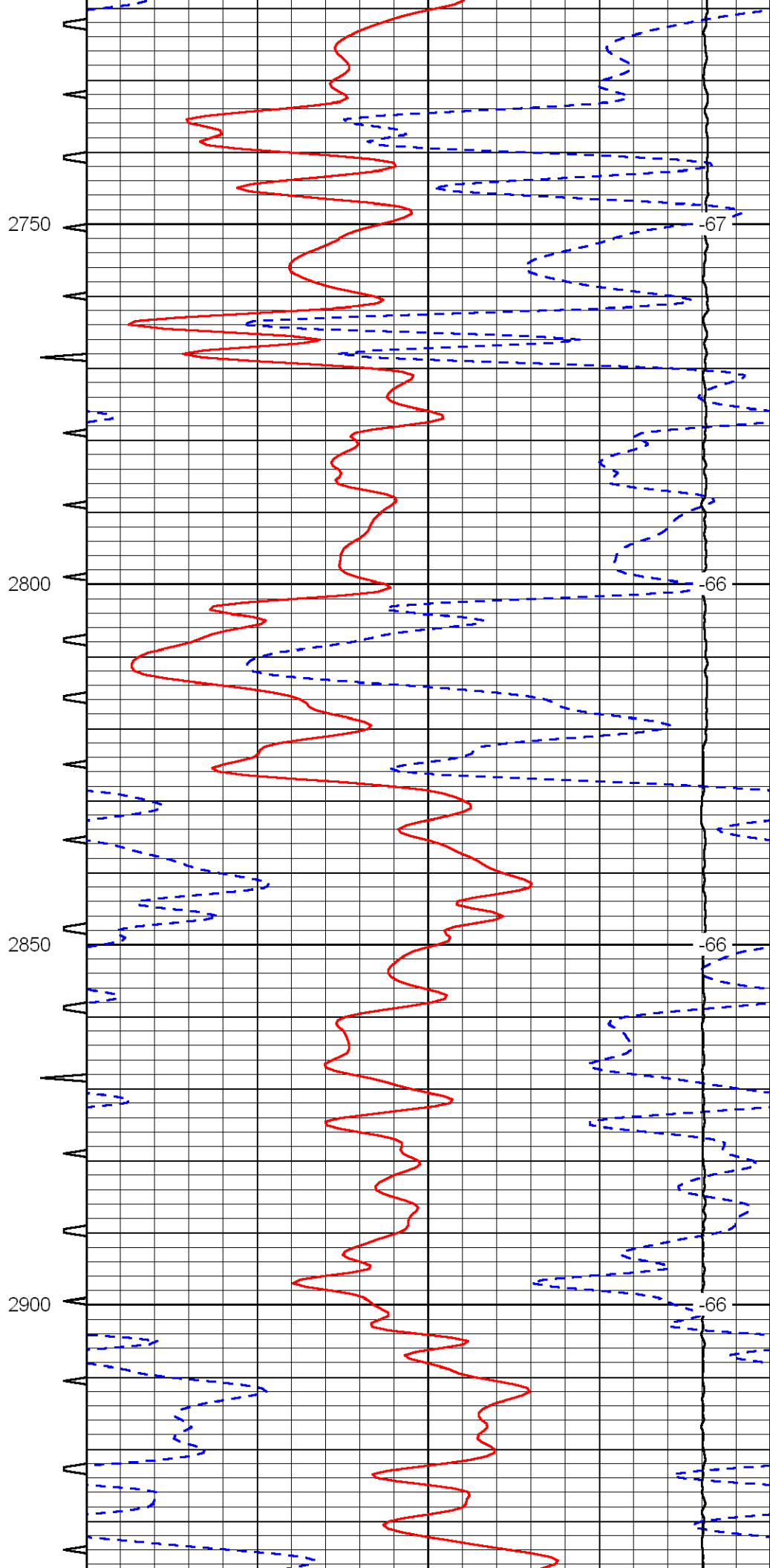
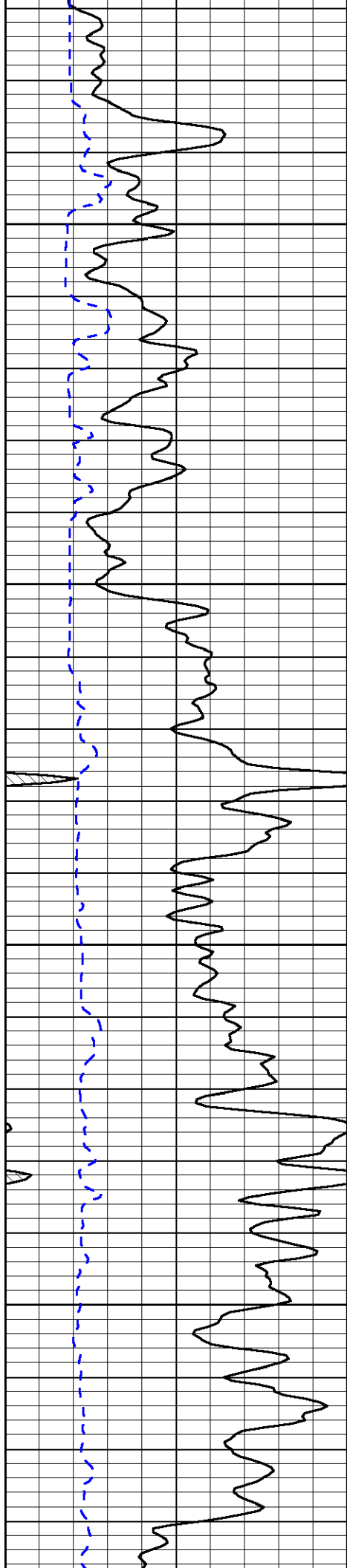


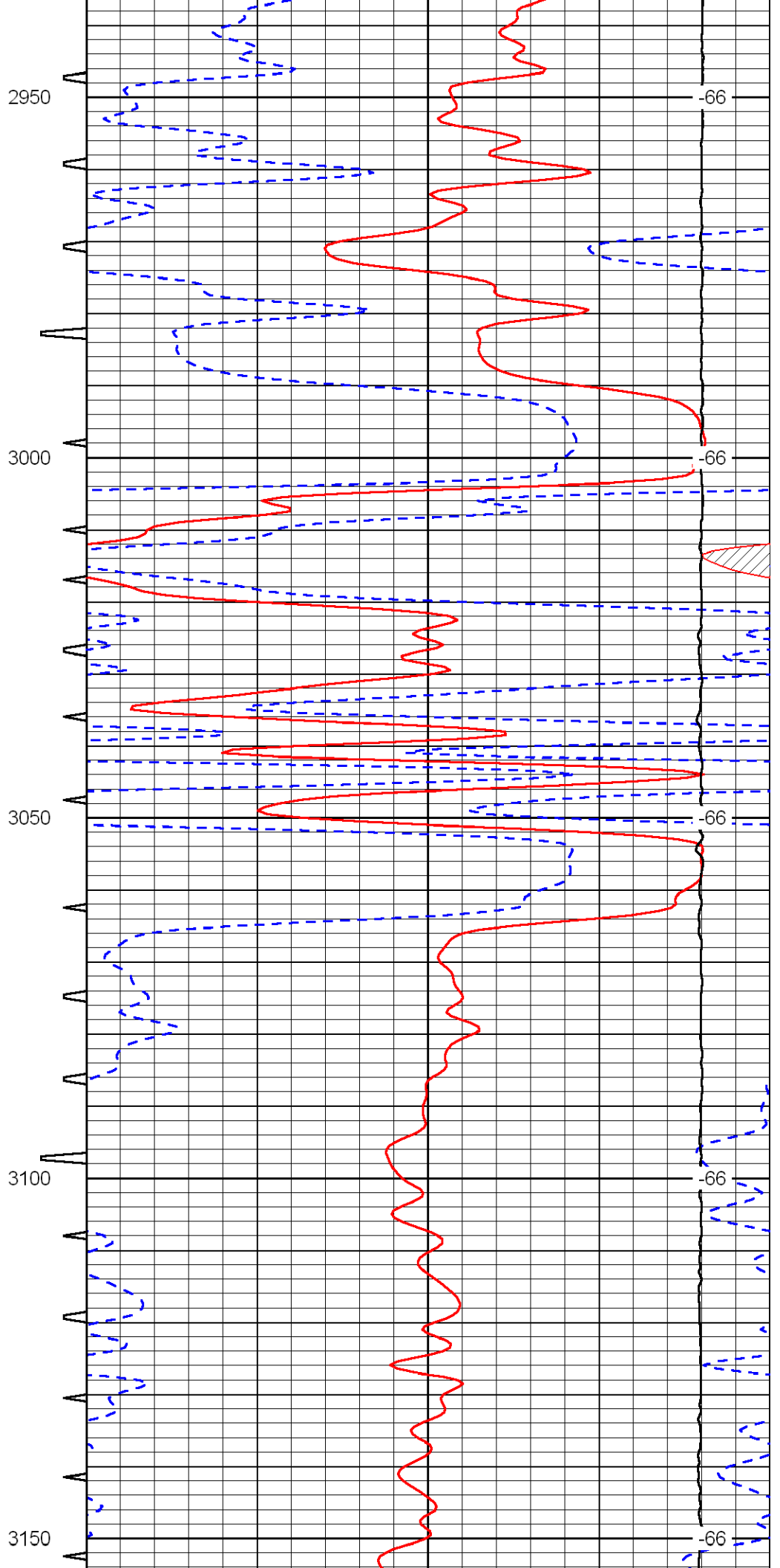
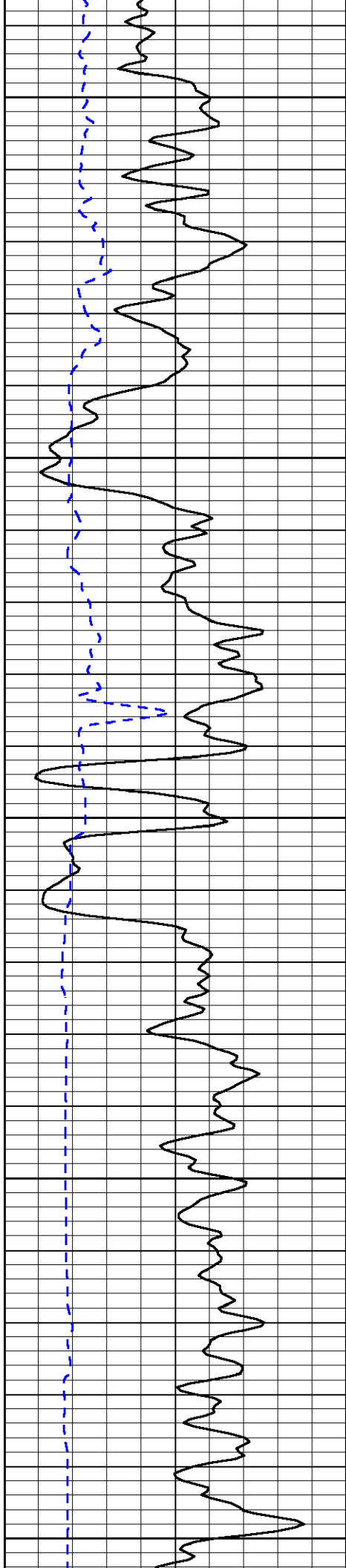


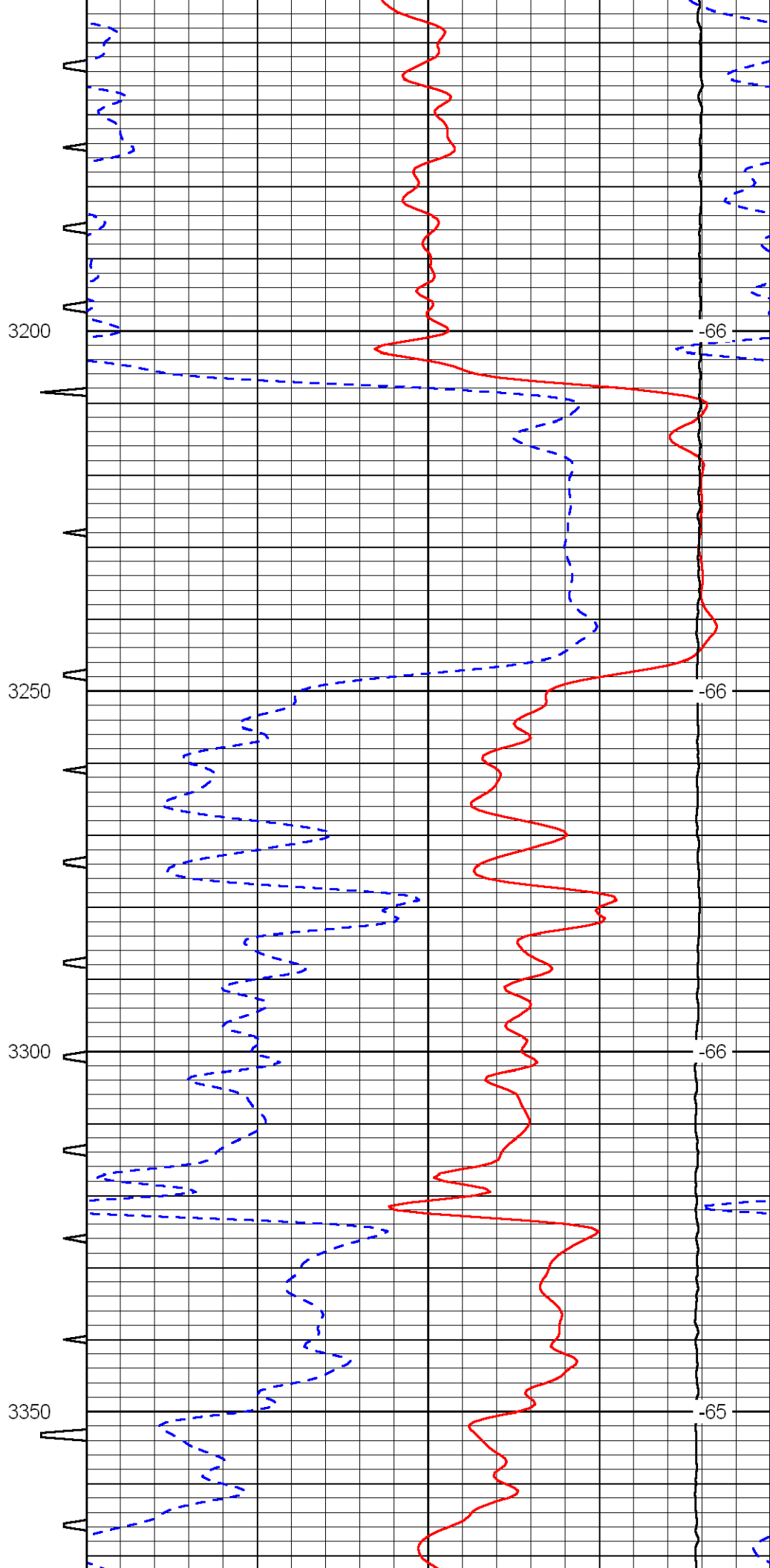
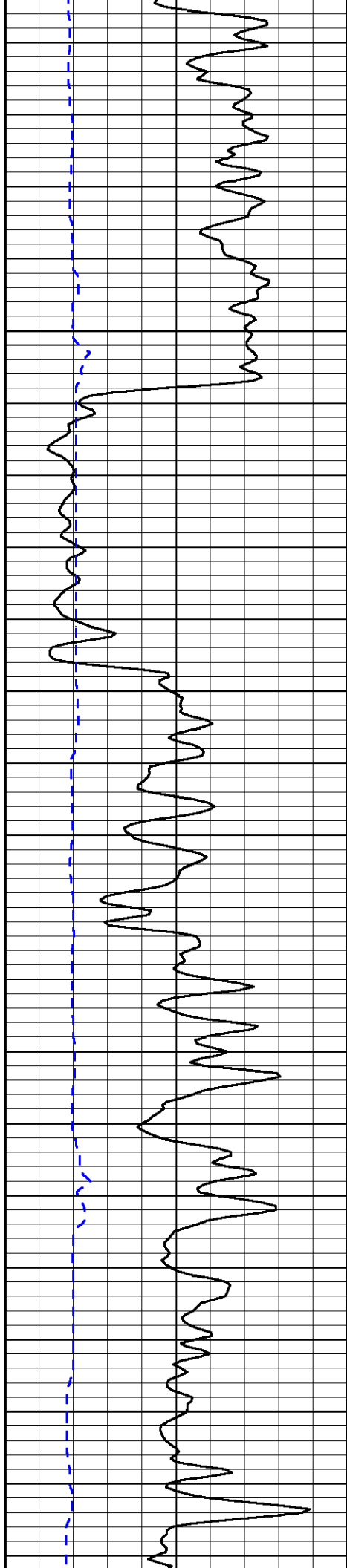


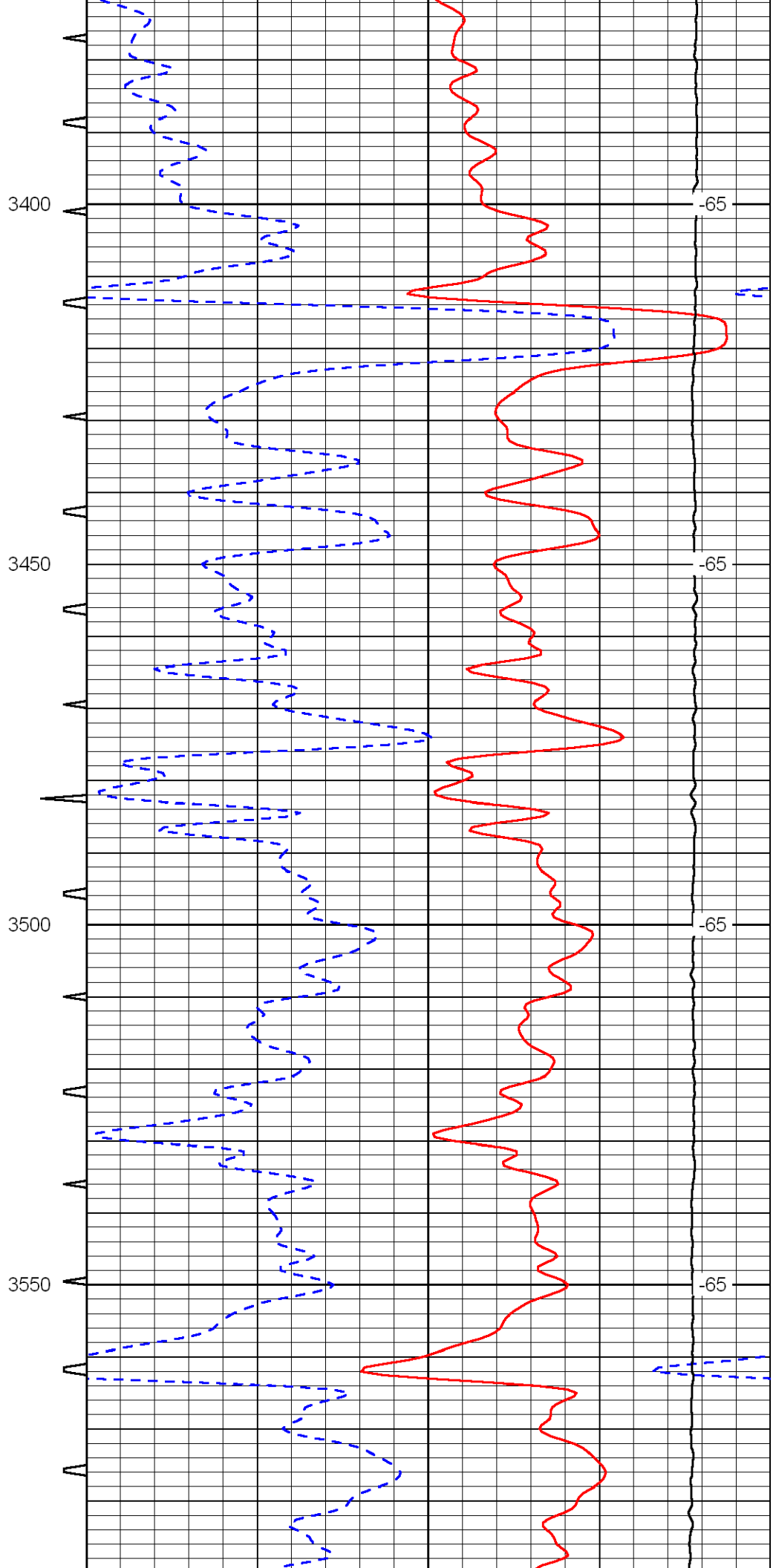
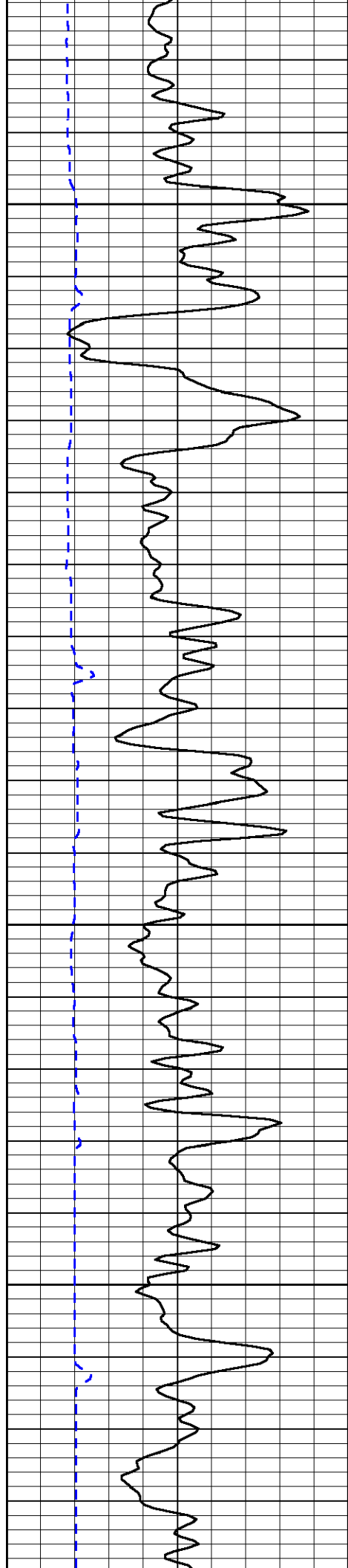


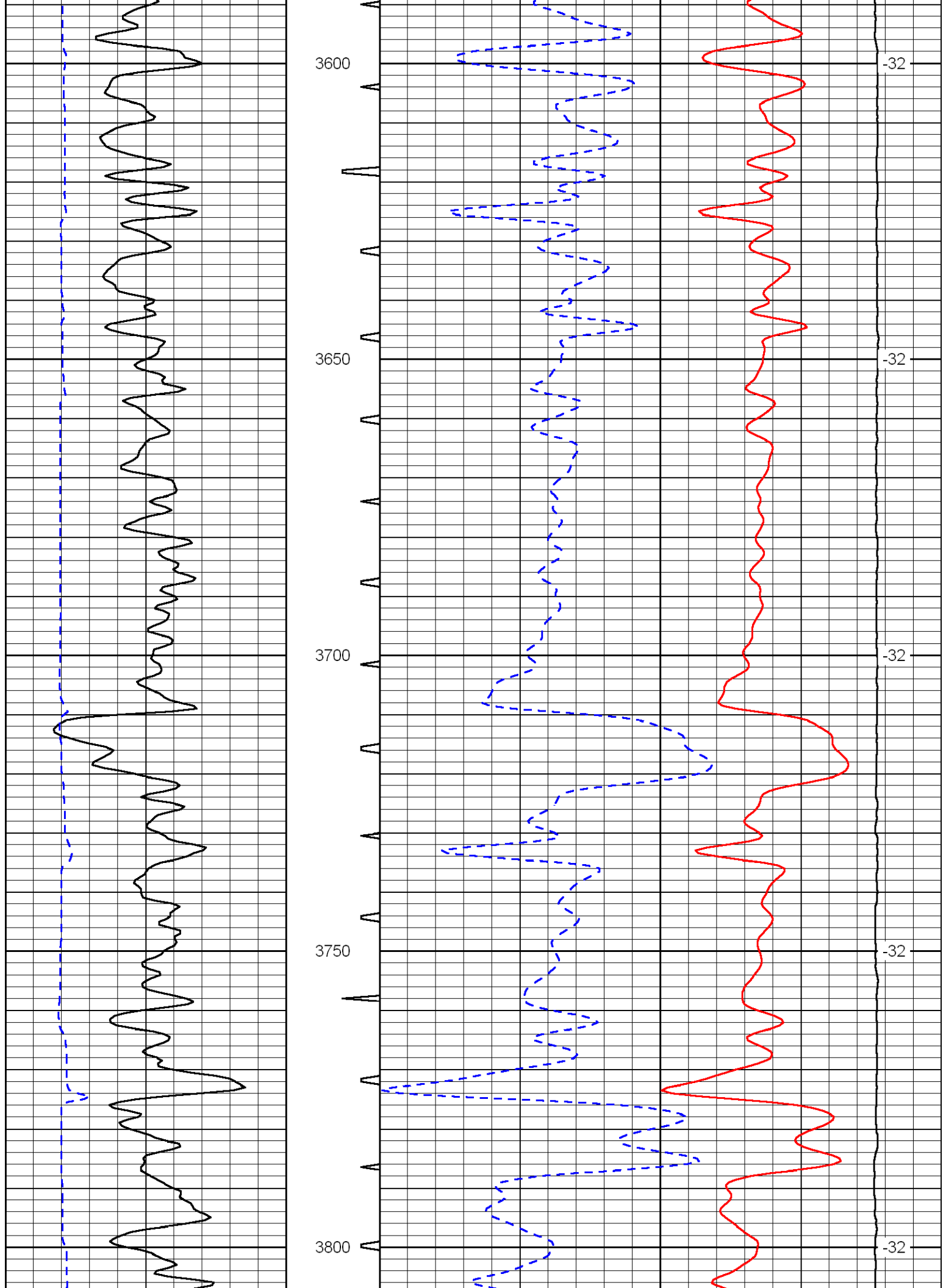


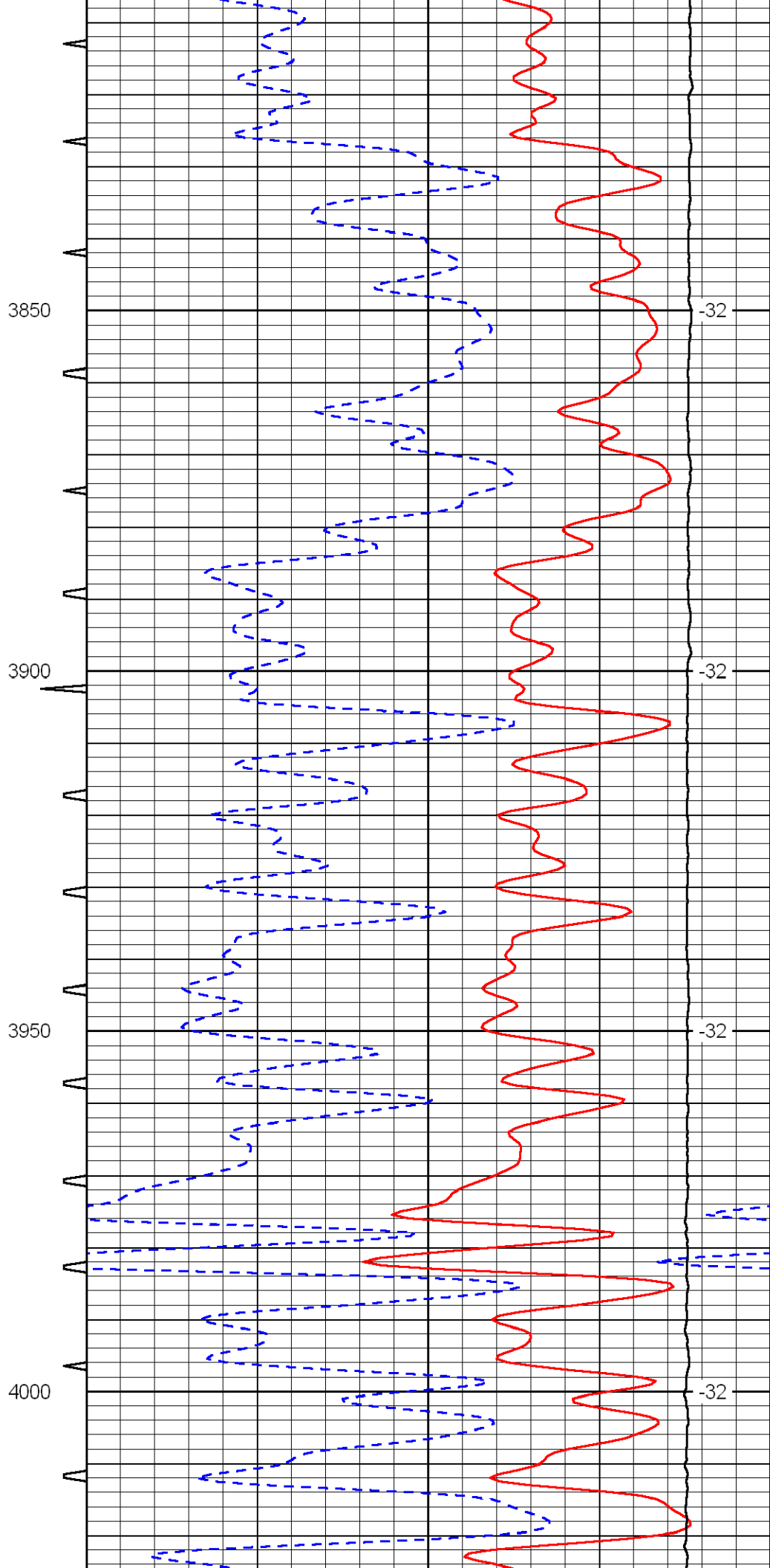
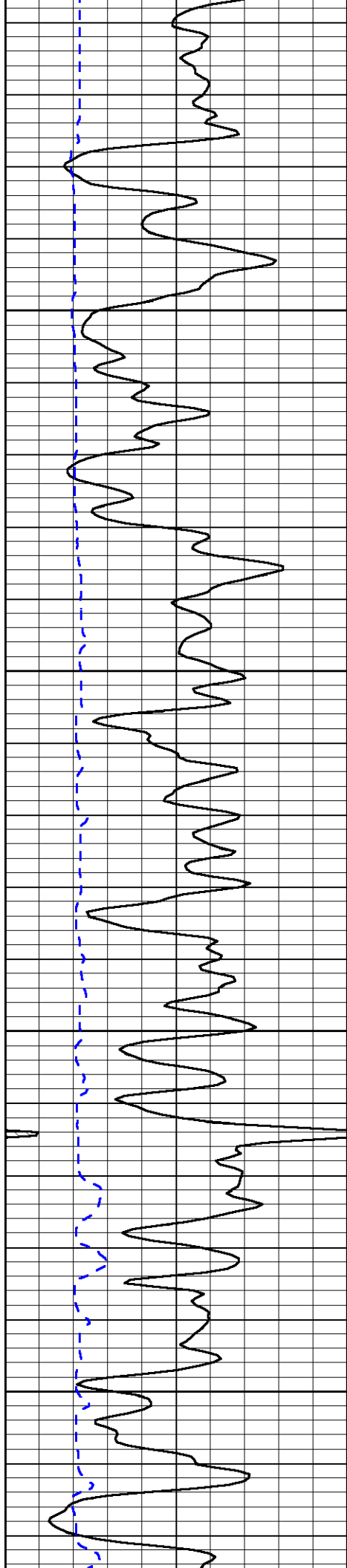


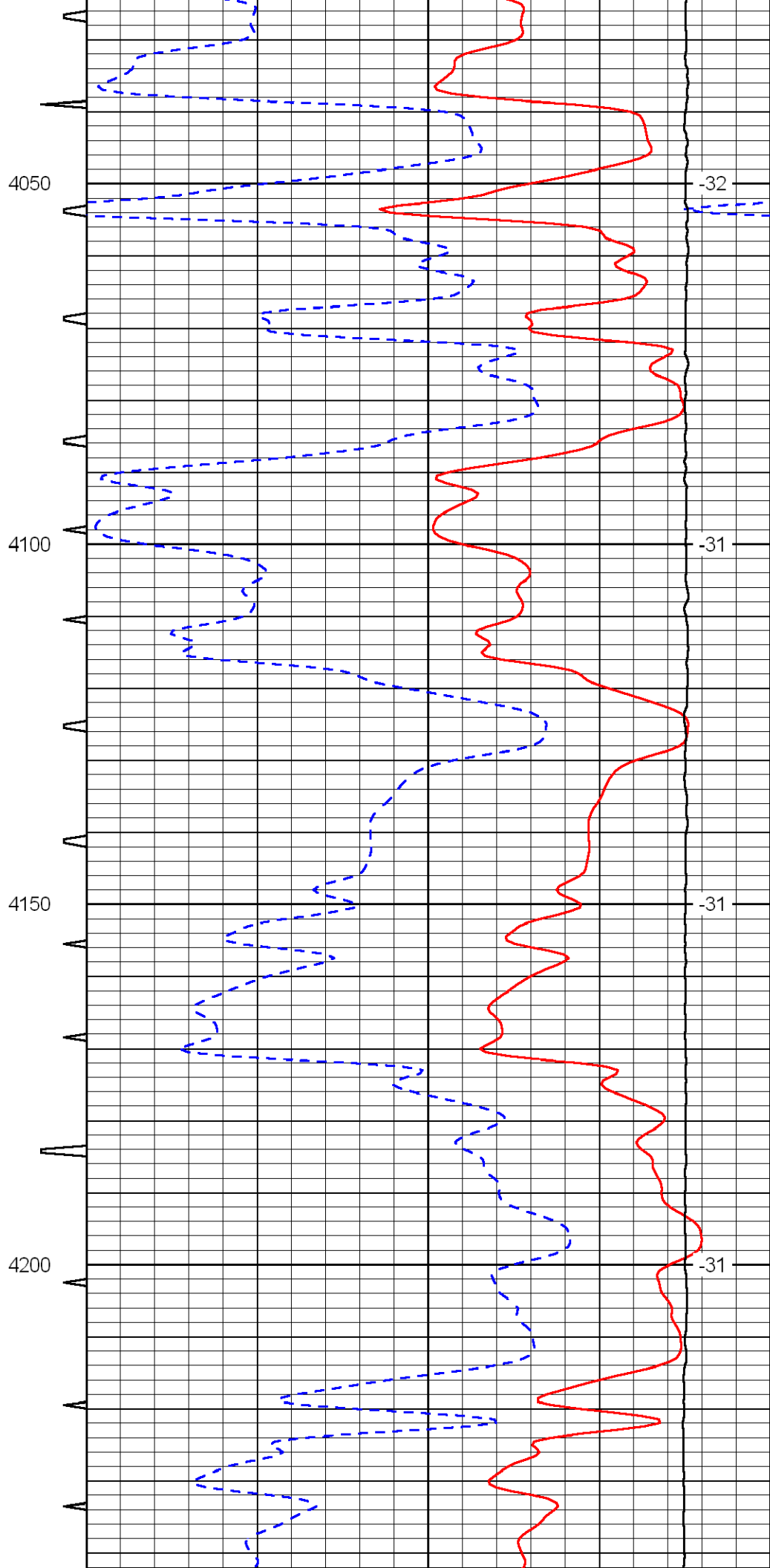
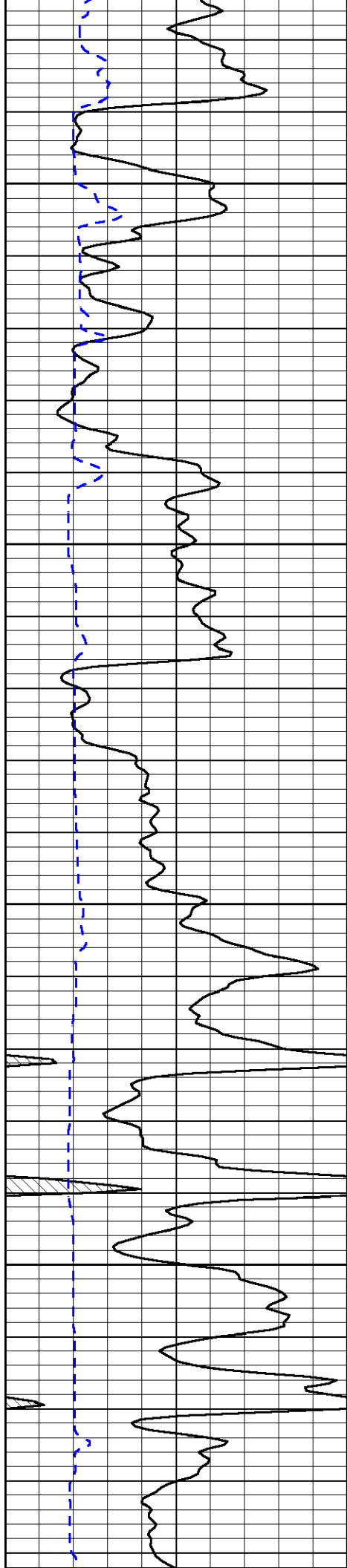


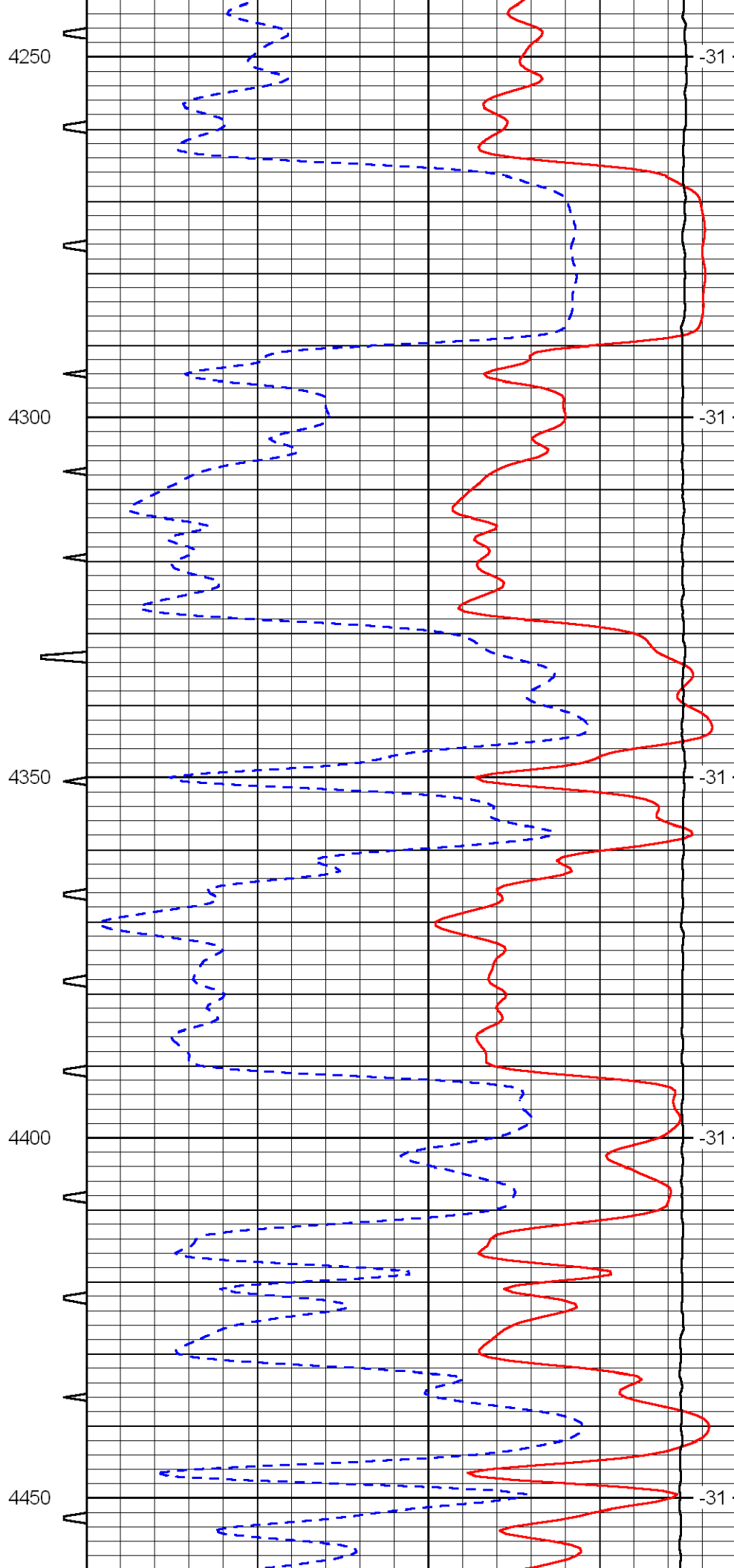
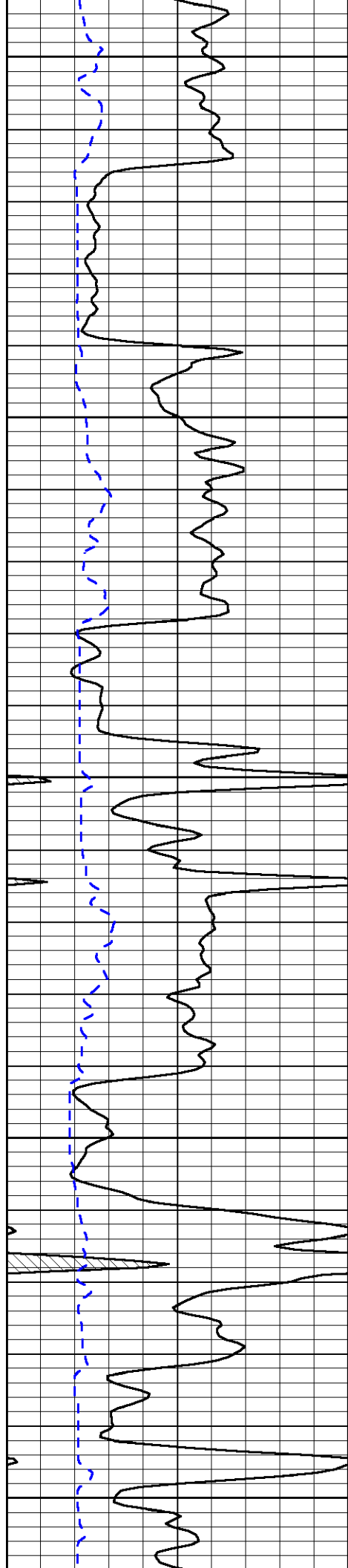


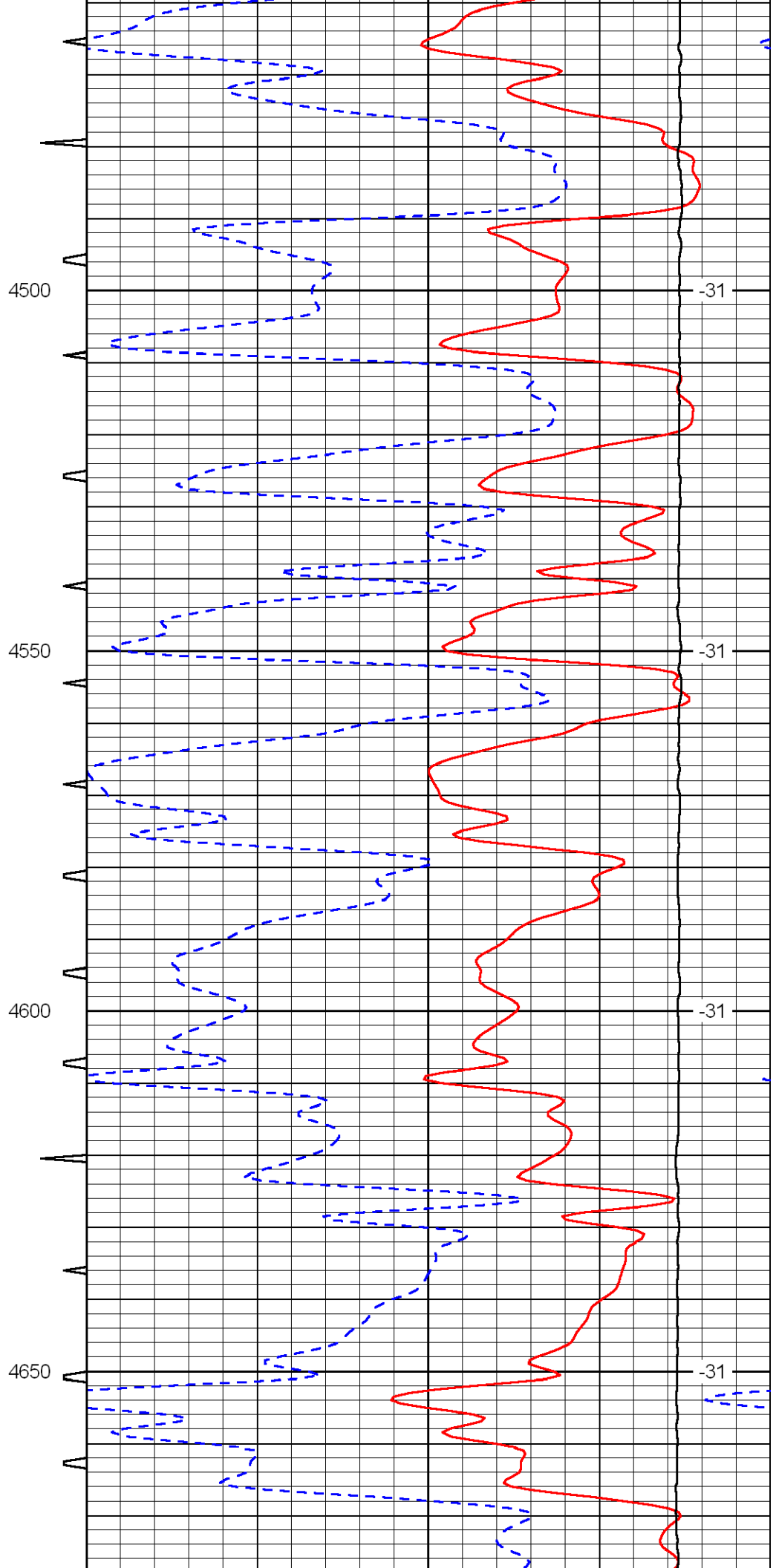
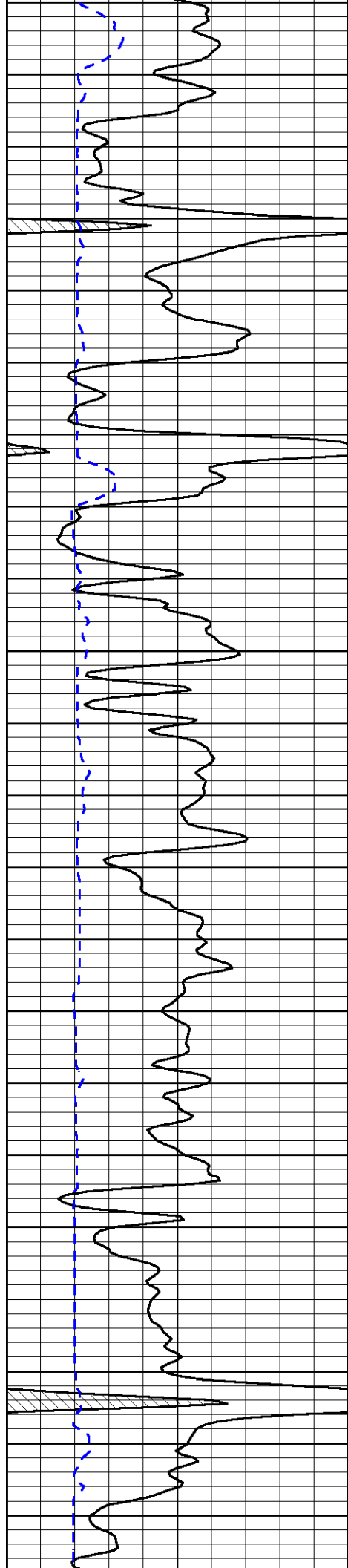


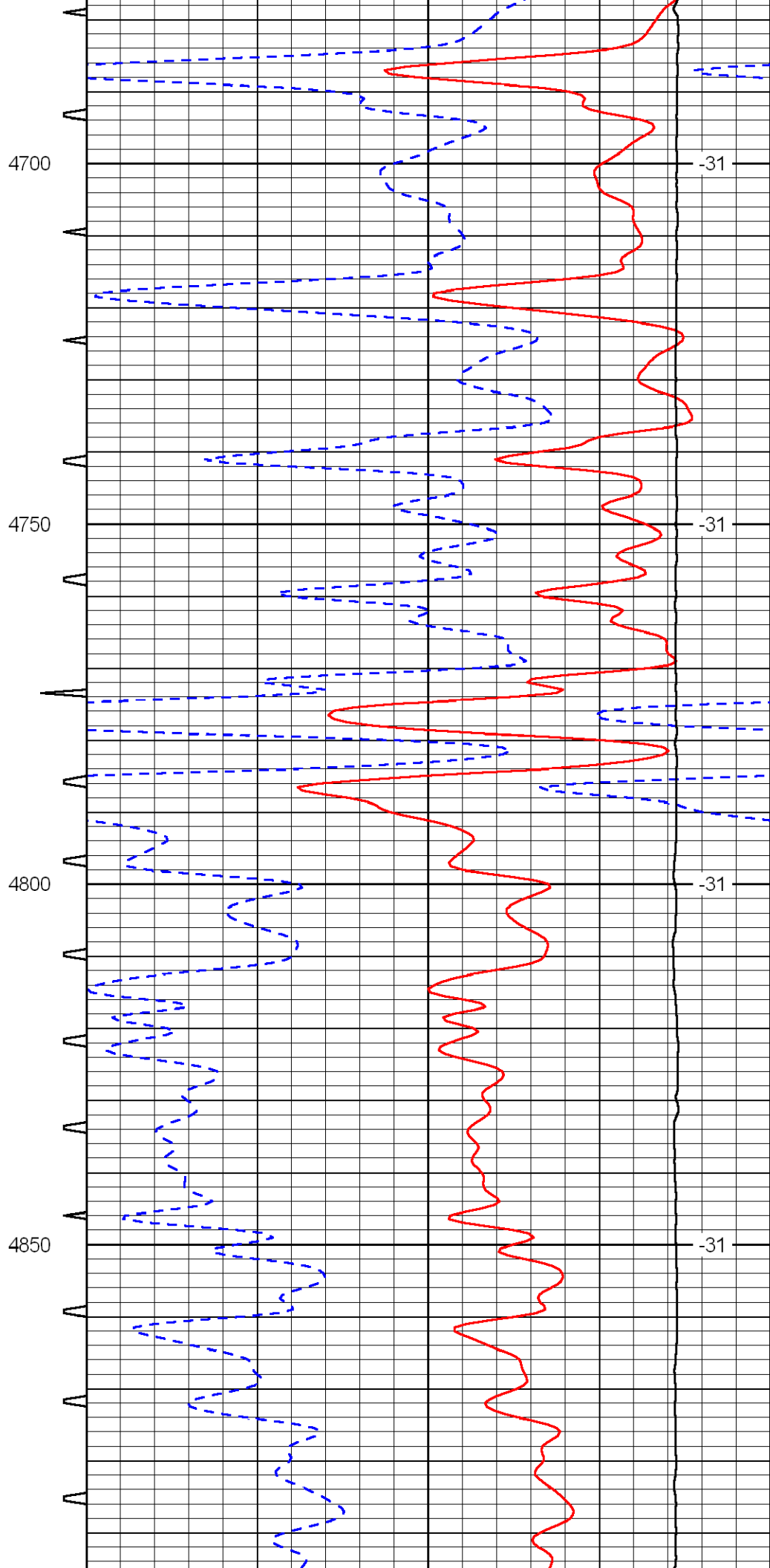
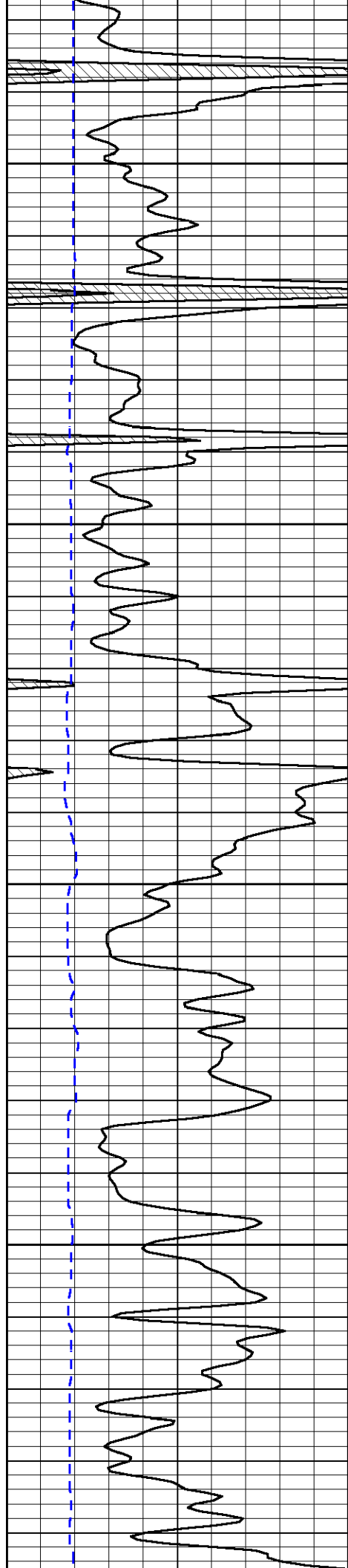


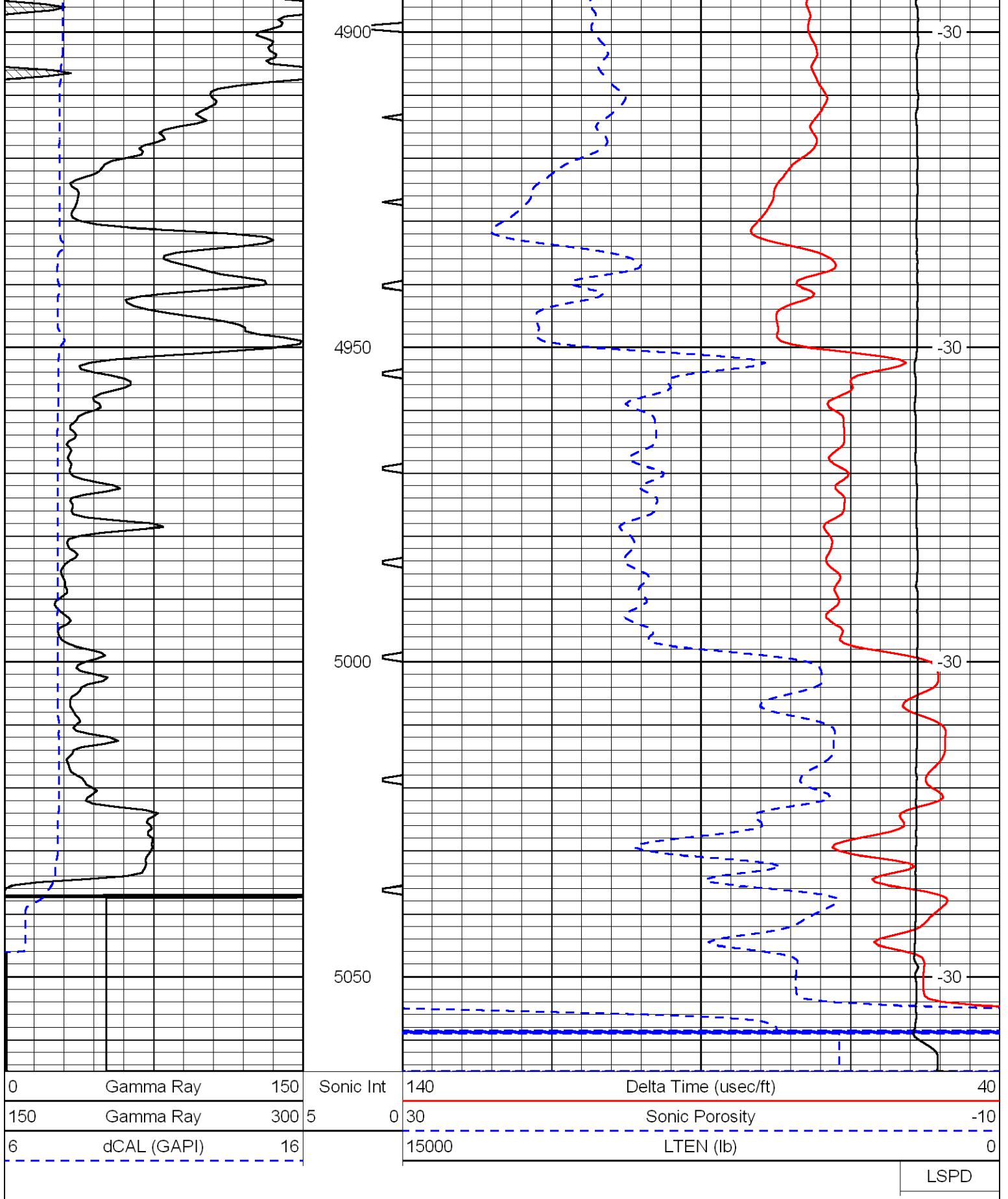












LSPD