

|                          |                       |                              |                          |
|--------------------------|-----------------------|------------------------------|--------------------------|
|                          |                       | <b>Sonic Cement Bond Log</b> |                          |
| API No.                  | 15-065-23868-00-00    | Company                      | H & C Oil Operating Inc. |
| Well                     | Widcat                | Workman Trust No.            | 13-1                     |
| County                   | Graham                | State                        | Kansas                   |
| Location                 | 990 ' N/L & 2310' FEL | Other Services               | Master Trailer           |
| Sec.                     | 13                    | Typ.                         | 6 S                      |
| Permanent Datum          | Ground level          | Rate                         | 24 W                     |
| Log Measured From        | Kelly Bushing         | Elevation                    | 2459                     |
| Drilling Measured From   | Kelly Bushing         | K.P.                         | 2464                     |
| Run Number               | One                   | C.I.                         | 2459                     |
| Date Surveyed            | 11/05/2012            |                              |                          |
| Date Cementing Operation | 10/28/2012            |                              |                          |
| Date Drilling Operation  | 09/20                 |                              |                          |
| Depth Logger             | 3924                  |                              |                          |
| Logged Interval          | 3923 to 2700          |                              |                          |
| Casing Collar            | 5.5                   | TD                           | III                      |
| Float Collar             | D.V. tool             |                              |                          |
| Acidizer & Vals Cement   | III                   |                              |                          |
| Acidizer & Vals Annulus  | III                   |                              |                          |
| Type Fluid in Hole       | Water                 |                              |                          |
| Fluid Level              | Full                  |                              |                          |
| Slurry Pptn. CL          | III                   |                              |                          |
| Slurry Pptn. CL - VS     | 2844                  |                              |                          |
| Approx. Cement Top       | 116                   |                              |                          |
| Approx. Cement Top       | PRB771                |                              |                          |
| Tool No. (Impressario)   | 3-5                   |                              |                          |
| Sparring Recorder        | 71                    | Hays                         |                          |
| Equipment - Location     | Scott Clemons         |                              |                          |
| Recorded By              | Charlie Ramsey        |                              |                          |

All interpretations are opinions based on inferences from electrical or other measurements and we cannot and do not guarantee the accuracy or correctness of any interpretation, and we shall not, except in the case of gross or willful negligence on our part, be liable or responsible for any loss, costs, damages, or expenses incurred or sustained by anyone resulting from any interpretation made by any of our officers, agents or employees. These interpretations are also subject to our general terms and conditions set out in our current Price Schedule.

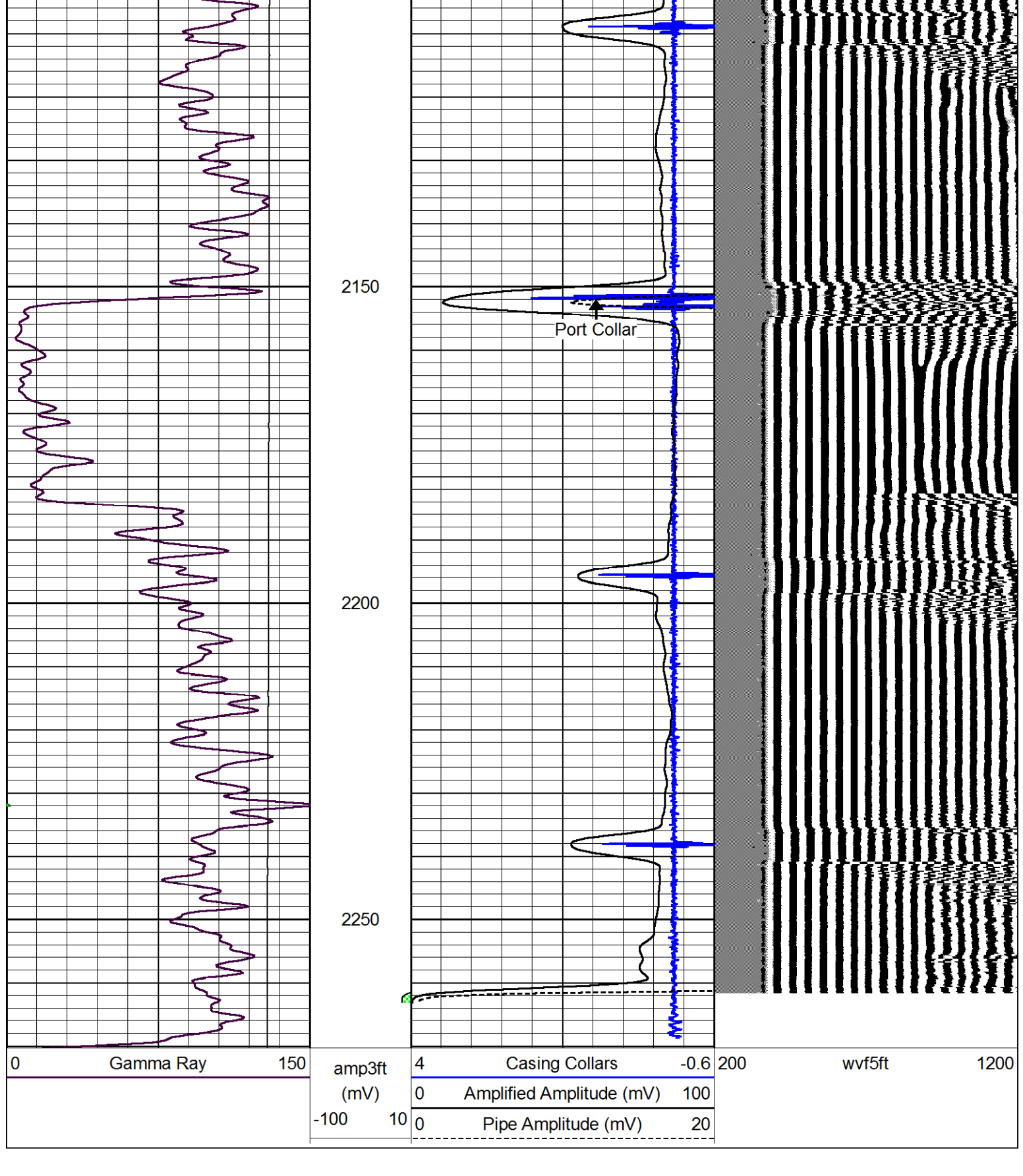
Comments

Thank you for using Pioneer Energy Services  
(785) 625-3858

Hill City Ks, 12 North to CC Rd., 5.5 West, South Into

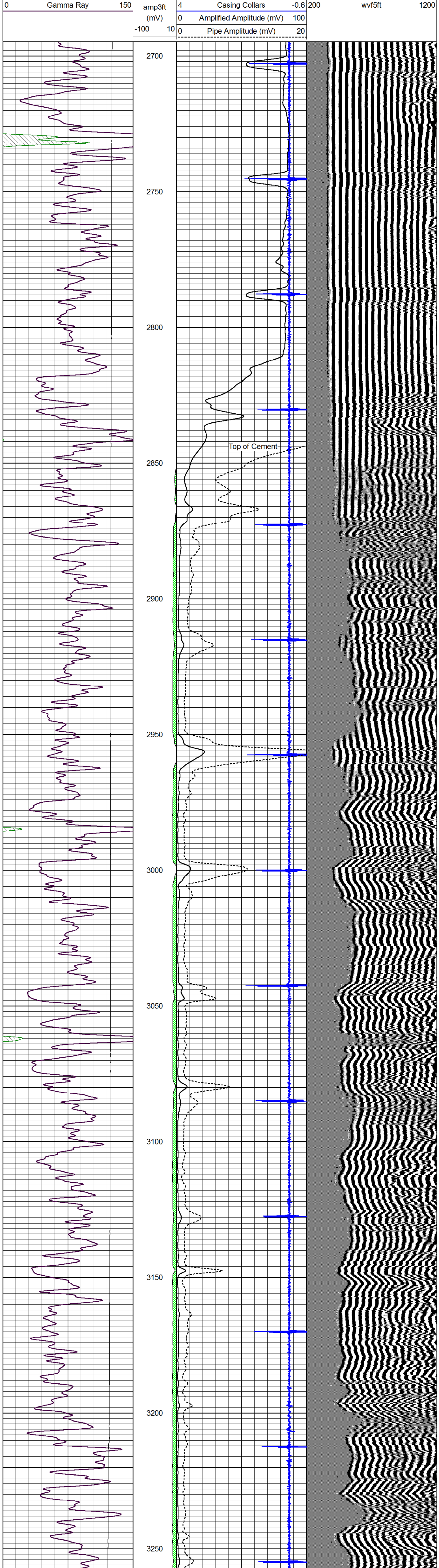
## Port Collar @ 2151

Database File: h&c\_workmantr\_13-1.db  
 Dataset Pathname: grcbi/pass9  
 Presentation Format: cblbr  
 Dataset Creation: Mon Nov 05 13:45:18 2012 by Log SCH 111116  
 Charted by: Depth in Feet scaled 1.240



## Main Pass

Database File: h&c\_workmantr\_13-1.db  
 Dataset Pathname: grcbi/pass8  
 Presentation Format: cblbr  
 Dataset Creation: Mon Nov 05 13:25:10 2012 by Log SCH 111116  
 Charted by: Depth in Feet scaled 1.240



## Repeat Section

Database File: h&c\_workmantr\_13-1.db  
 Dataset Pathname: grcbi/pass7  
 Presentation Format: cblbr  
 Dataset Creation: Mon Nov 05 13:21:07 2012 by Log SCH 111116  
 Charted by: Depth in Feet scaled 1.240

