



**COMPLETION  
& PRODUCTION  
SERVICES CO.**

**COMPENSATED  
DENSITY / NEUTRON  
LOG**

Company: BLUERIDGE PETROLEUM CORP.  
Well: SCHOEN #1-14  
Field: WILDCAT  
County: GRAHAM State: KANSAS

Company: BLUERIDGE PETROLEUM CORP.  
Well: SCHOEN #1-14  
Field: WILDCAT  
County: GRAHAM  
State: KANSAS

Location: API #: 15-065-23871  
1535' FNL & 1225' FWL  
SEC 14 TWP 6S RGE 25W  
Permanent Datum: GROUND LEVEL Elevation: 2538  
Log Measured From: KELLY BUSHING 9' A.G.L.  
Drilling Measured From: KELLY BUSHING  
Other Services: DIL MICRO  
Elevation: K.B. 2547 D.F. G.L. 2538

Date	11-7-12
Run Number	ONE
Depth Driller	3940
Depth Logger	3940
Bottom Logged Interval	3916
Top Log Interval	3300
Casing Driller	348
Casing Logger	348
Bit Size	7.875
Type Fluid in Hole	CHEMICAL MUD
Density / Viscosity	9.2 / 52
pH / Fluid Loss	10.5 / 7.4
Source of Sample	FLOWLINE
Rm @ Meas. Temp	1.50 @ 62F
Rmf @ Meas. Temp	1.13 @ 62F
Rmc @ Meas. Temp	1.80 @ 62F
Source of Rmf / Rmc	MEASURED
Rm @ BHT	.820 @ 114F
Time Circulation Stopped	2 HOURS
Time Logger on Bottom	8:30 P.M.
Maximum Recorded Temperature	114F
Equipment Number	860
Location	HAYS, KS.
Recorded By	RUPP
Witnessed By	JIM MUSGROVE

<<< Fold Here >>>

All interpretations are opinions based on inferences from electrical or other measurements and we cannot and do not guarantee the accuracy or correctness of any interpretation, and we shall not, except in the case of gross or willful negligence on our part, be liable or responsible for any loss, costs, damages, or expenses incurred or sustained by anyone resulting from any interpretation made by any of our officers, agents or employees. These interpretations are also subject to our general terms and conditions set out in our current Price Schedule.

Comments

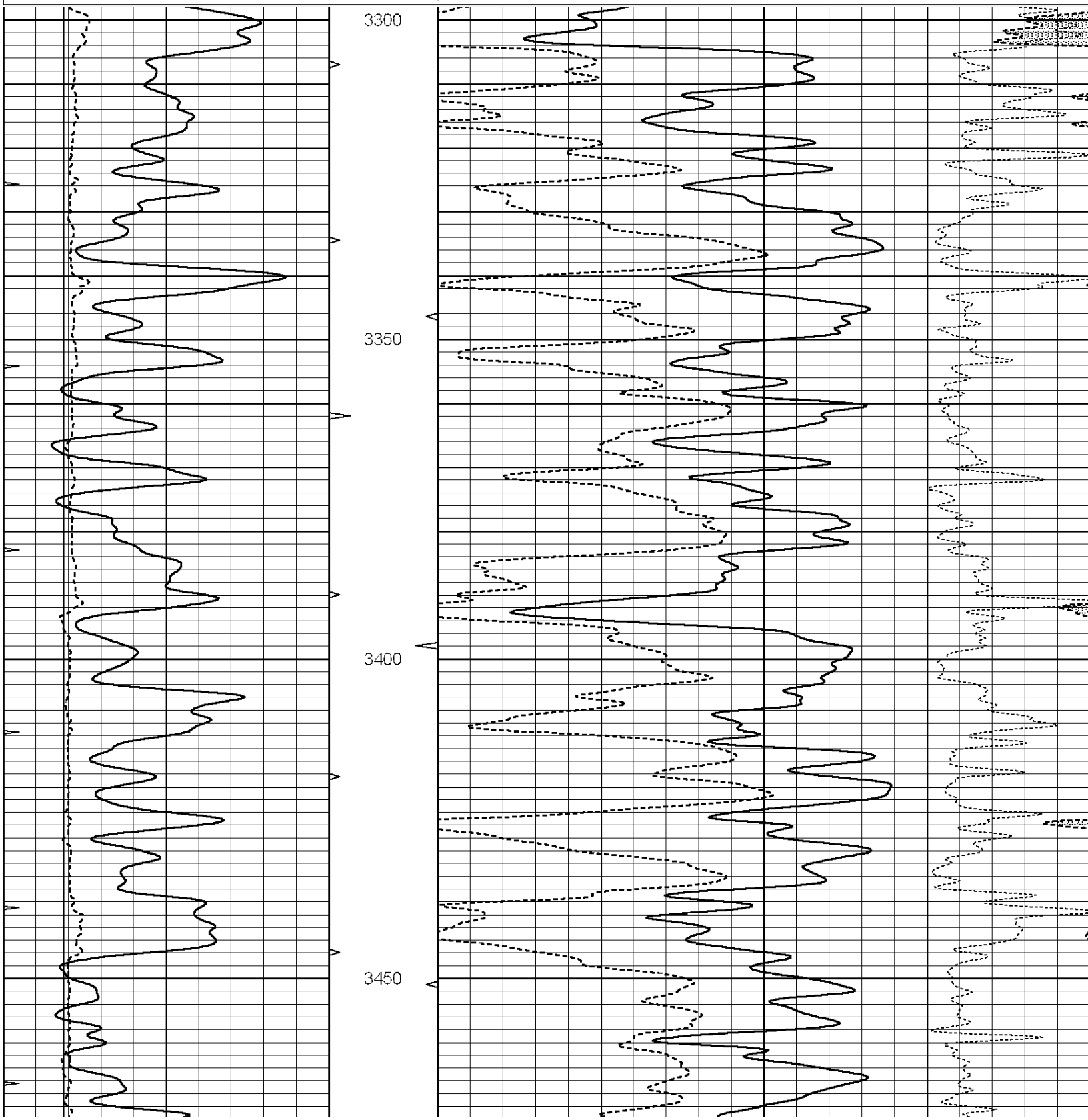
NABORS COMPLETION & PRODUCTION CO.  
THANK YOU FOR YOUR BUSINESS  
DIRECTIONS: HILL CITY, 9W TO RD. #170TH, 12N TO BB RD., 3 WEST TO 140TH RD., 3/4N, E INTO.

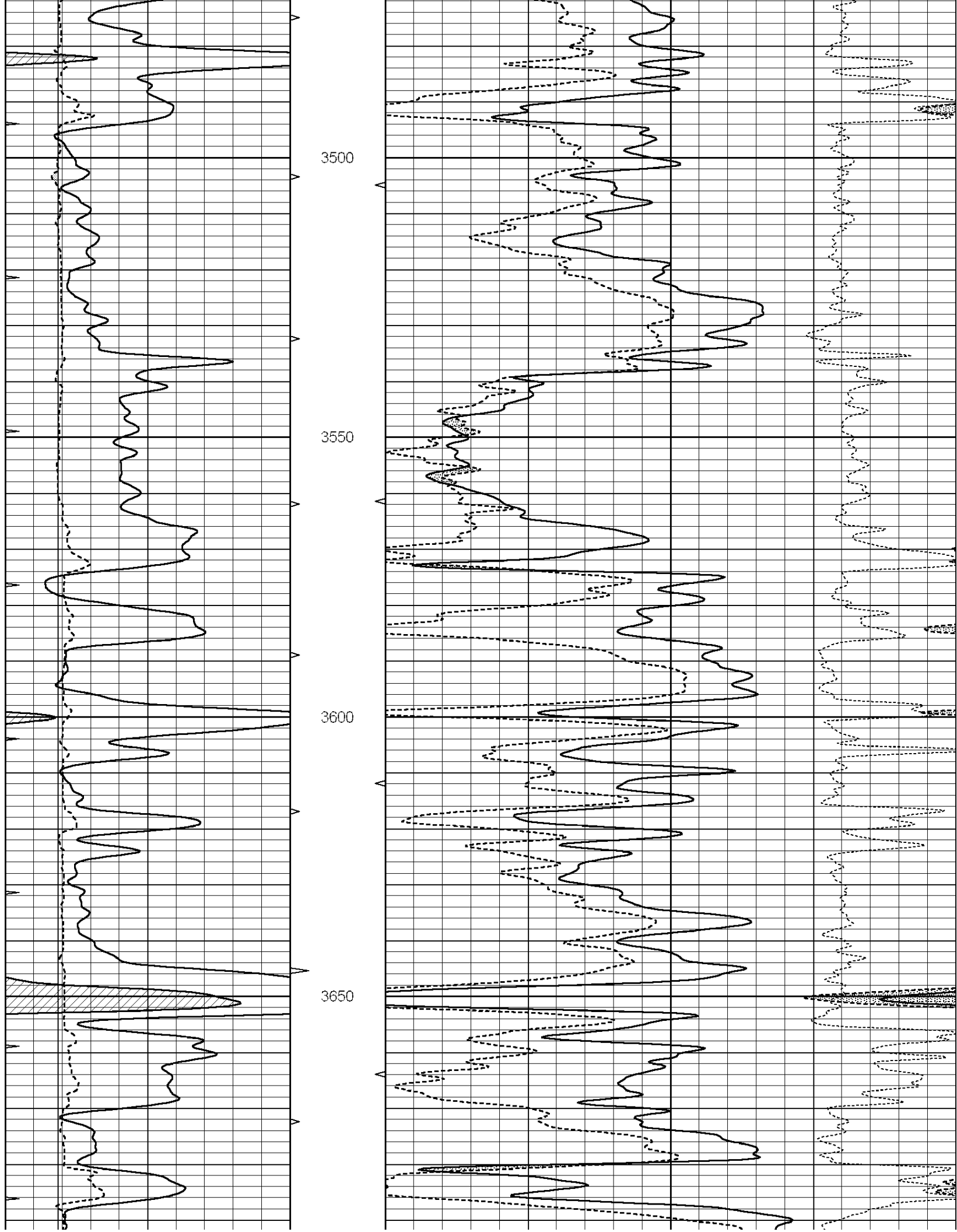


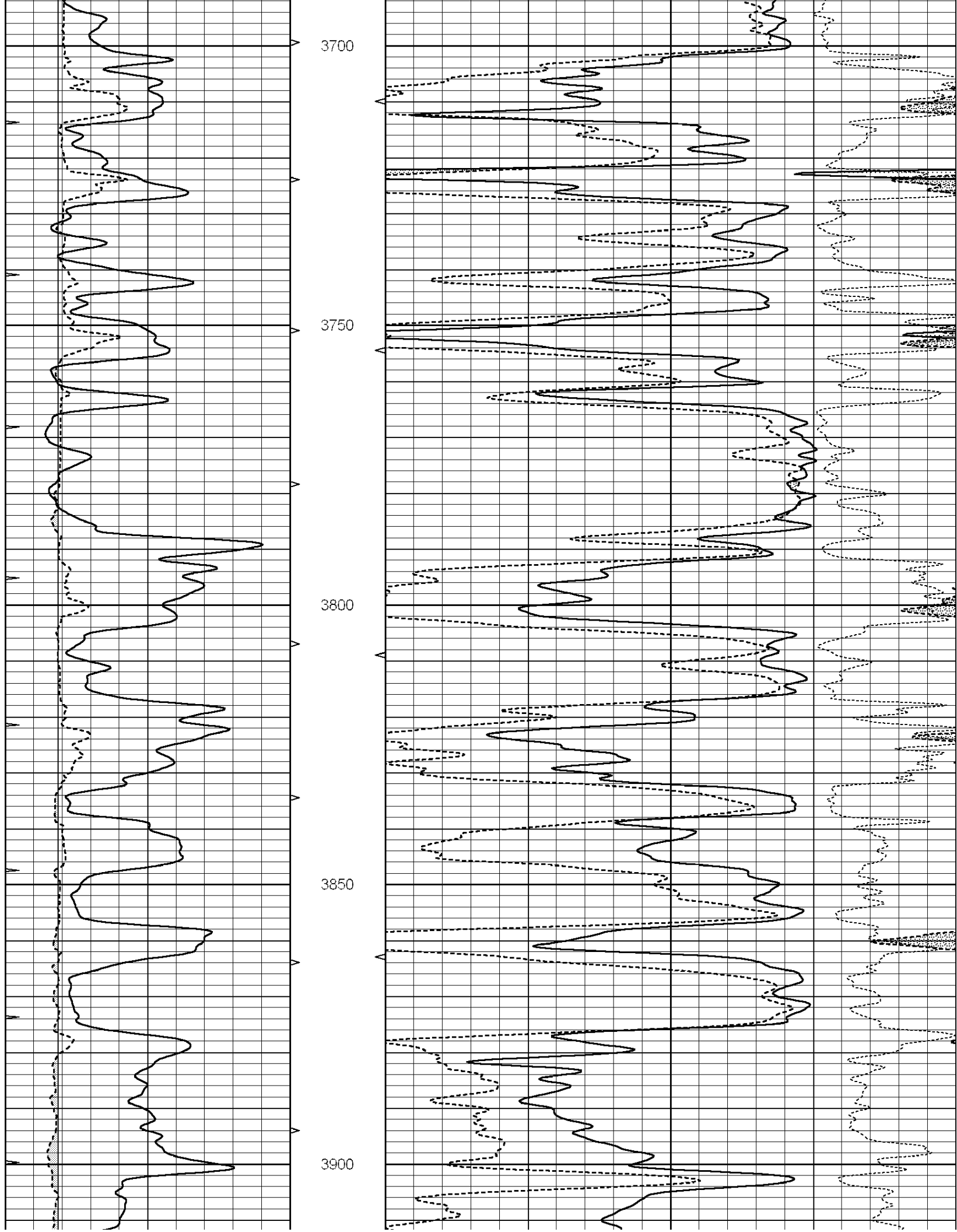
**MAIN SECTION**

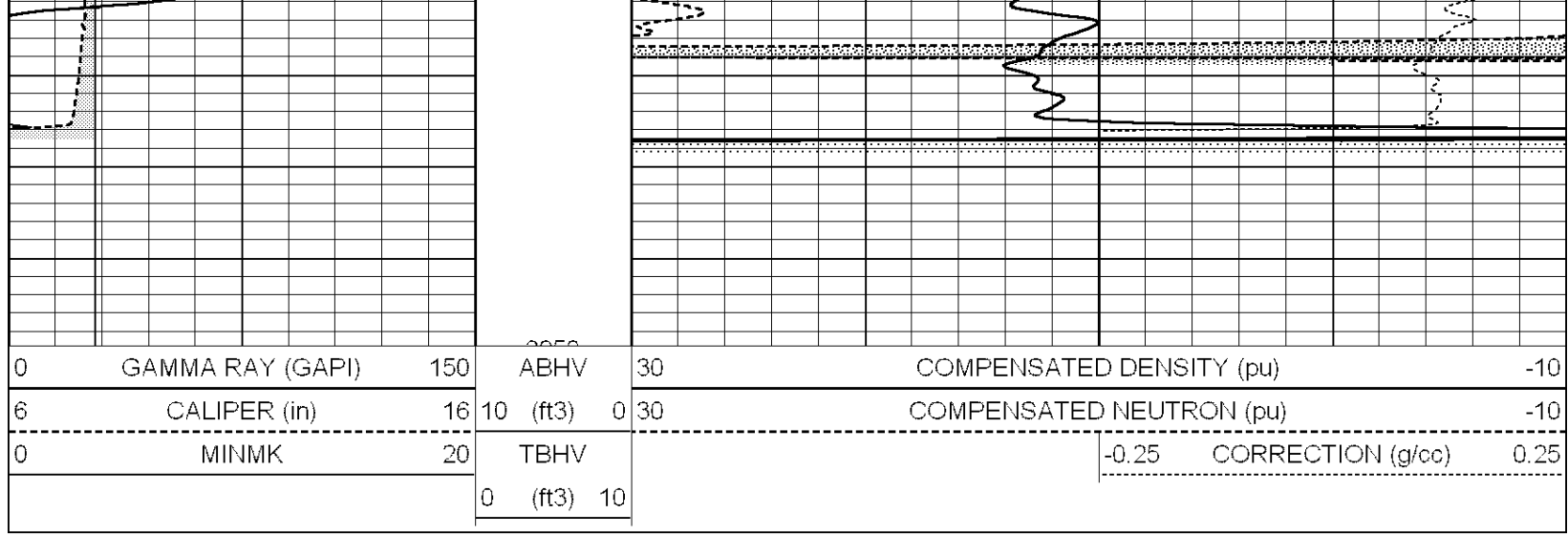
Database File: 009942ddn.db  
 Dataset Pathname: pass3.1A  
 Presentation Format: den\_neu  
 Dataset Creation: Wed Nov 07 22:10:58 2012 by Calc Open-Cased 090629  
 Charted by: Depth in Feet scaled 1:240

0	GAMMA RAY (GAPI)	150	ABHV	30	COMPENSATED DENSITY (pu)	-10
6	CALIPER (in)	16	10 (ft3)	0 30	COMPENSATED NEUTRON (pu)	-10
0	MINMK	20	TBHV		-0.25 CORRECTION (g/cc)	0.25
			0 (ft3)	10		



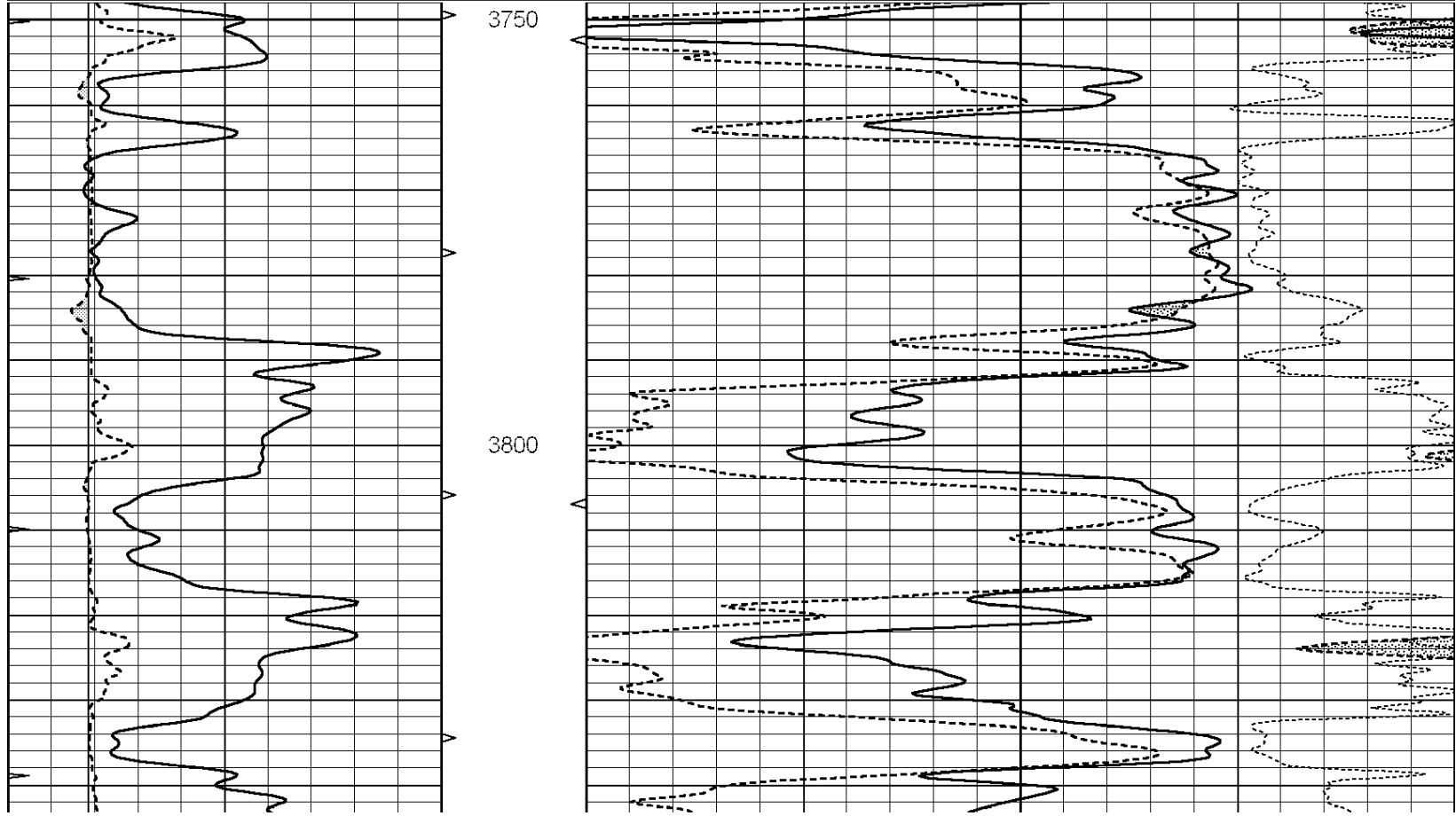
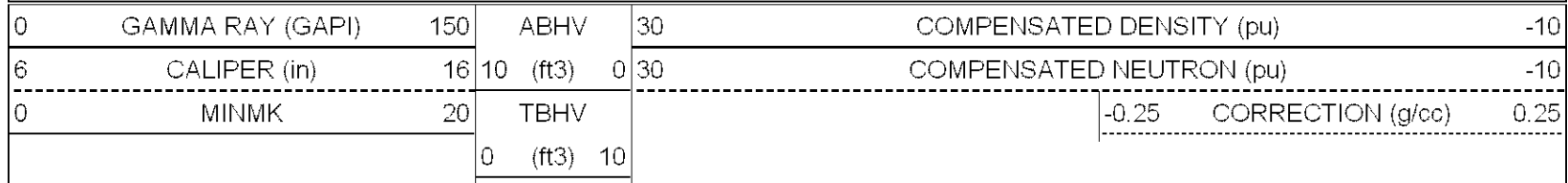


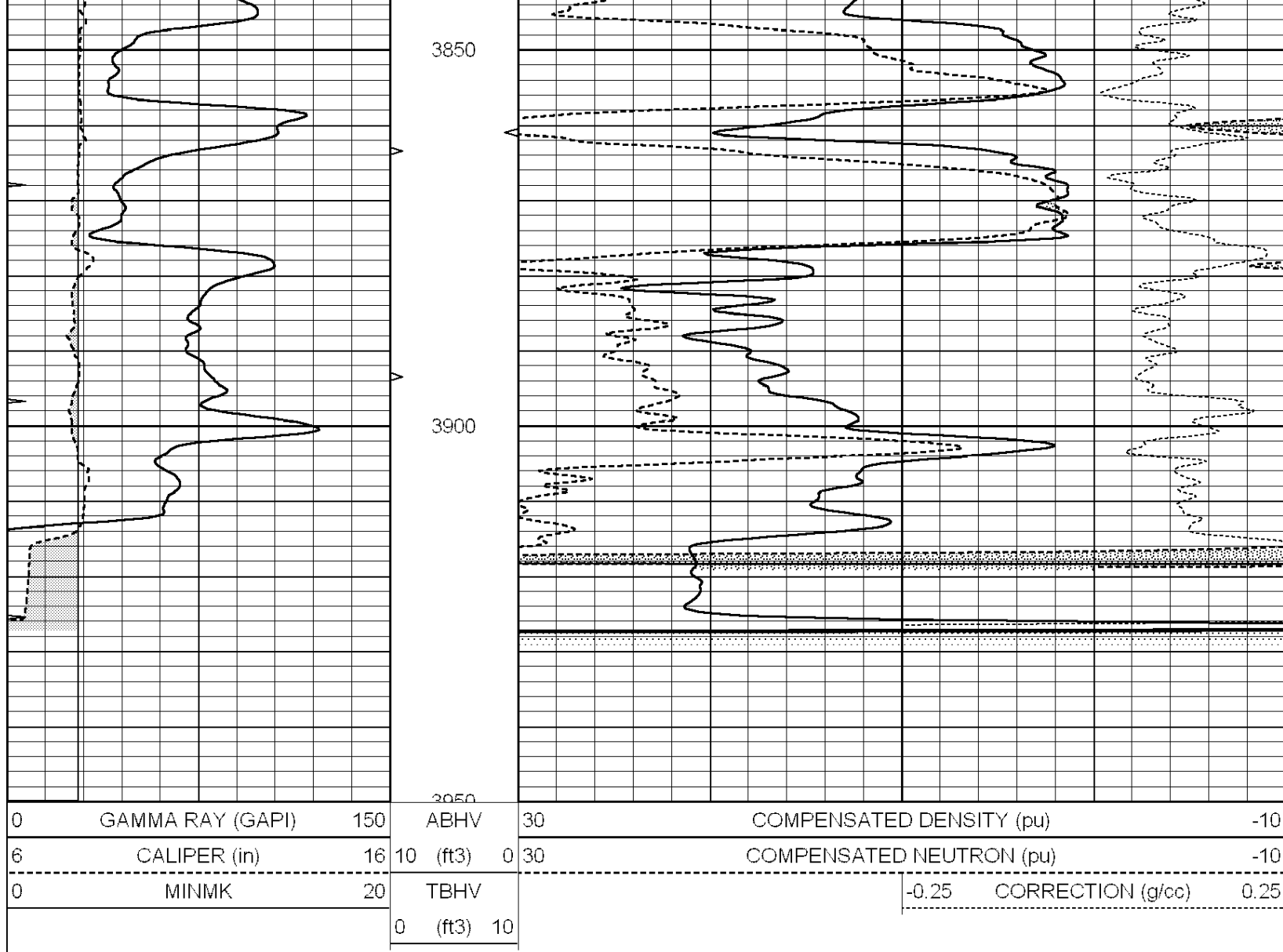




# REPEAT SECTION

Database File: 009942ddn.db  
 Dataset Pathname: pass2.1A  
 Presentation Format: den\_neu  
 Dataset Creation: Thu Nov 08 00:06:14 2012  
 Charted by: Depth in Feet scaled 1:240





### Calibration Report

Database File: 009942ddn.db  
 Dataset Pathname: pass3.1A  
 Dataset Creation: Wed Nov 07 22:10:58 2012 by Calc Open-Cased 090629

### Dual Induction Calibration Report

Serial-Model: DIL5-GEAR  
 Performed: Wed Nov 07 20:16:00 2012

Loop:	Readings			References			Results	
	Air	Loop		Air	Loop		m	b
Deep	0.004	0.654	V	0.000	400.000	mmho/m	470.000	-13.000
Medium	-0.005	0.737	V	0.000	462.500	mmho/m	500.000	-8.000
Internal:	Zero	Cal		Zero	Cal		m	b
Deep	0.006	0.655	V	0.000	400.000	mmho/m	615.668	-3.483
Medium	0.010	0.747	V	0.000	462.500	mmho/m	627.607	-6.064

### Compensated Density Calibration Report

Serial-Model: GEAR1-GEARHART  
 Source / Verifier: 147 / 147  
 Master Calibration Performed: Wed Nov 07 20:15:40 2012

Master Calibration

	Density		Far Detector	Near Detector	
Magnesium	1.710	g/cc	1205.67	613.10	cps
Aluminum	2.590	g/cc	277.64	430.46	cps
Spine Angle = 76.46			Density/Spine Ratio = 0.583		
	Size		Reading		
Small Ring	9.00	in	4.69	V	
Large Ring	14.00	in	6.52	V	

Compensated Neutron Calibration Report

Serial Number: NUE\_2I  
 Tool Model: G

CALIBRATION

Detector	Readings		Target		Normalization
Short Space	1.00	cps	1.00	cps	1.0000
Long Space	1.00	cps	1.00	cps	1.0000

Gamma Ray Calibration Report

Serial Number: GR5  
 Tool Model: OPEN  
 Performed: Wed Nov 07 20:15:13 2012

Calibrator Value: 1.0 GAPI

Background Reading: 0.0 cps  
 Calibrator Reading: 1.0 cps

Sensitivity: 0.7500 GAPI/cps