

**COMPLETION
& PRODUCTION
SERVICES CO.**

**DUAL RECEIVER
CEMENT BOND
LOG**

Company BLUERIDGE PETROLEUM CORP.
Well SCHOEN #1-14
Field WILDCAT
County GRAHAM
State KANSAS

Company BLUERIDGE PETROLEUM CORPORATION
Well SCHOEN #1-14
Field WILDCAT
County GRAHAM State KANSAS

Location: API #: 15-065-23871-00-00
1535' FNL & 1225' FWL
SEC 14 TWP 6S RGE 25W
Permanent Datum GROUND LEVEL Elevation 2538
Log Measured From KELLY BUSHING 9' A.G.L.
Drilling Measured From KELLY BUSHING
Other Services
PERF
Elevation
K.B. 2547
D.F.
G.L. 2538

Date	11-15-12				
Run Number	ONE				
Depth Driller	3940				
Depth Logger	3874				
Bottom Logged Interval	3872				
Top Log Interval	3100				
Open Hole Size	7-7/8"				
Type Fluid	WATER				
Density / Viscosity					
Max. Recorded Temp.					
Estimated Cement Top					
Time Well Ready					
Time Logger on Bottom	0916				
Equipment Number	HAYS, KANSAS				
Location	THOMASON				
Recorded By	STAN REINHARDT				
Witnessed By					
Run Number	Borehole Record		Tubing Record		
Bit	From	To	Size	Weight	To
Casing Record	Size	Wgt/Ft	Top	Bottom	
Surface String	8-5/8"		0	348	
Prot. String					
Production String	4-1/2"				
Liner					

<<< Fold Here >>>

All interpretations are opinions based on inferences from electrical or other measurements and we cannot and do not guarantee the accuracy or correctness of any interpretation, and we shall not, except in the case of gross or willful negligence on our part, be liable or responsible for any loss, costs, damages, or expenses incurred or sustained by anyone resulting from any interpretation made by any of our officers, agents or employees. These interpretations are also subject to our general terms and conditions set out in our current Price Schedule.

Comments

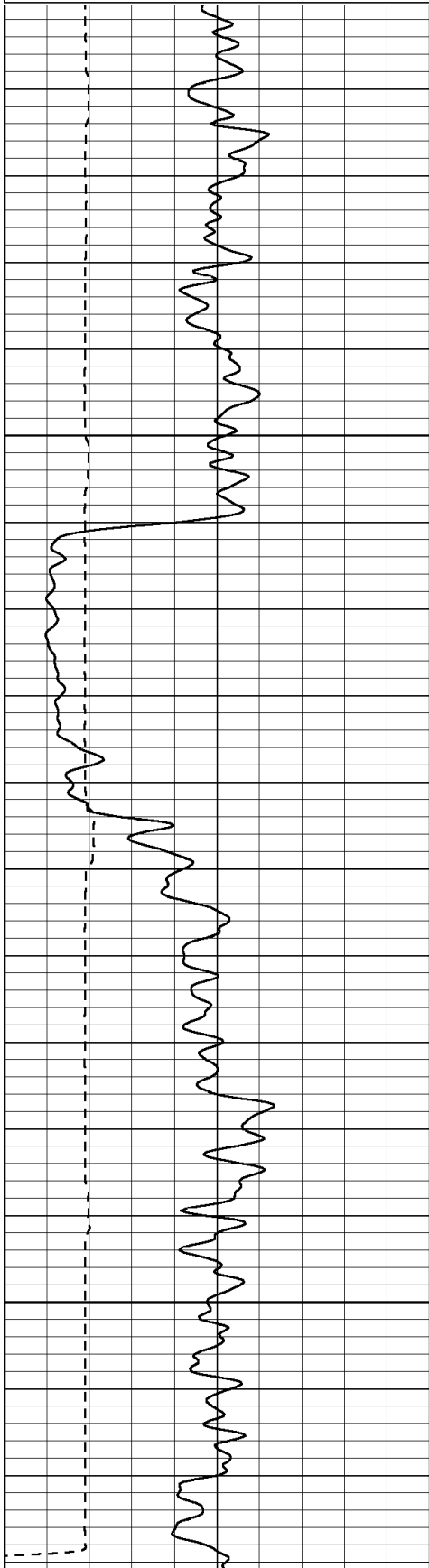
THANK YOU FOR USING NABORS COMPLETION & PRODUCTION SERVICES
DIRECTIONS
HILLCITY - 9 WEST TO RD. 170TH - 12 NORTH TO BB RD. - 3 WEST TO 140TH RD.
3/4 NORTH - EAST INTO

Database File: 010111grb.db
 Dataset Pathname: pass8
 Presentation Format: dcbl02
 Dataset Creation: Thu Nov 15 12:24:50 2012 by Log Open-Cased 071220
 Charted by: Depth in Feet scaled 1:240

0	Gamma Ray (GAPI)	150
200	5' Travel Time (usec)	1000

0	3' Amplitude (mV)	100
9	CCL	-1
0	Amplified Amplitude (mV)	20

200 5FT VDL 1000

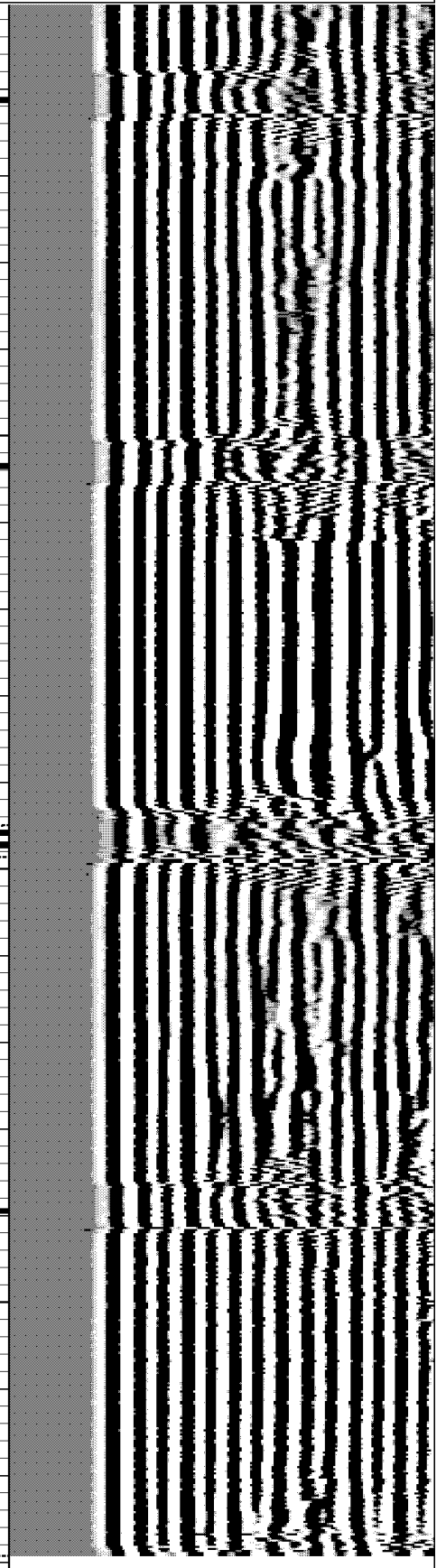
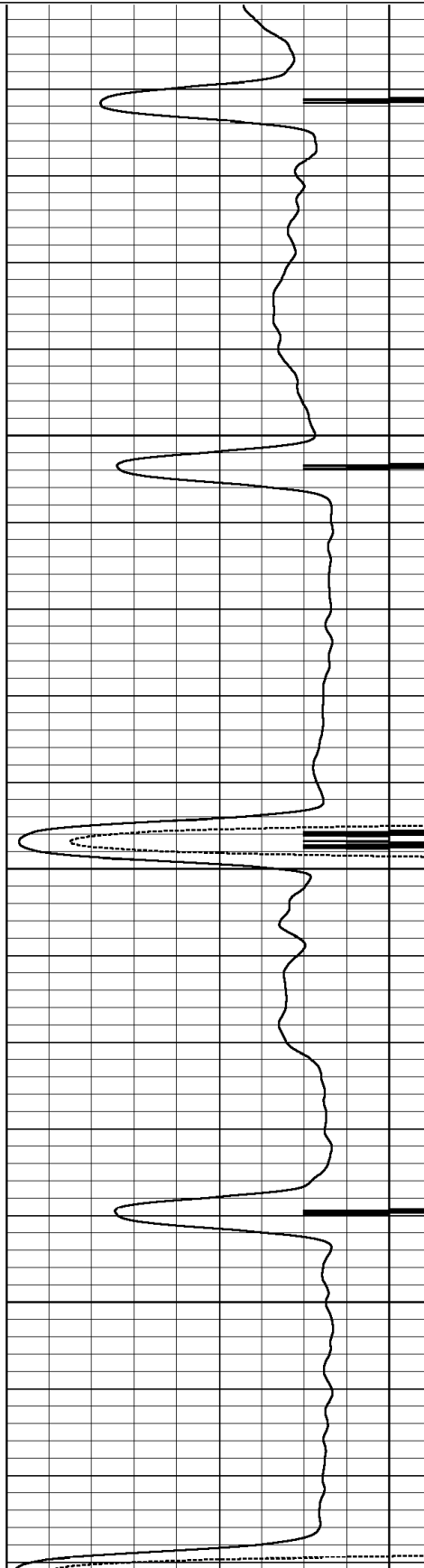


2100

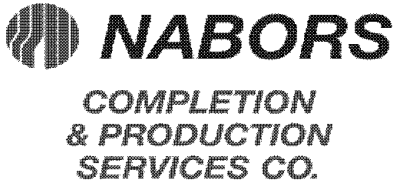
2150

2200

2250



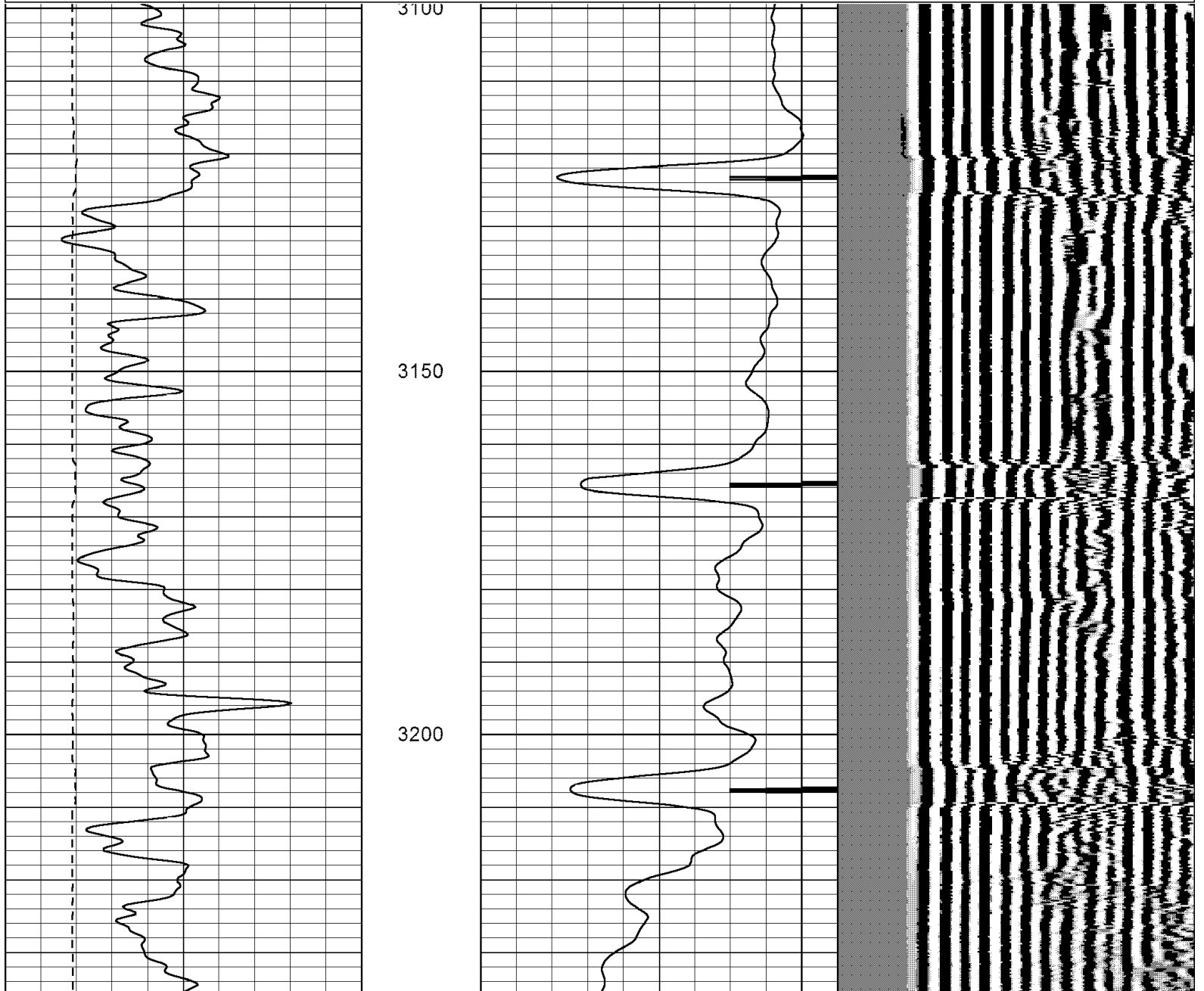
0	Gamma Ray (GAPI)	150	0	3' Amplitude (mV)	100	200	5FT VDL	1000
200	5' Travel Time (usec)	1000	9	CCL	-1			
-----			0	Amplified Amplitude (mV)	20			

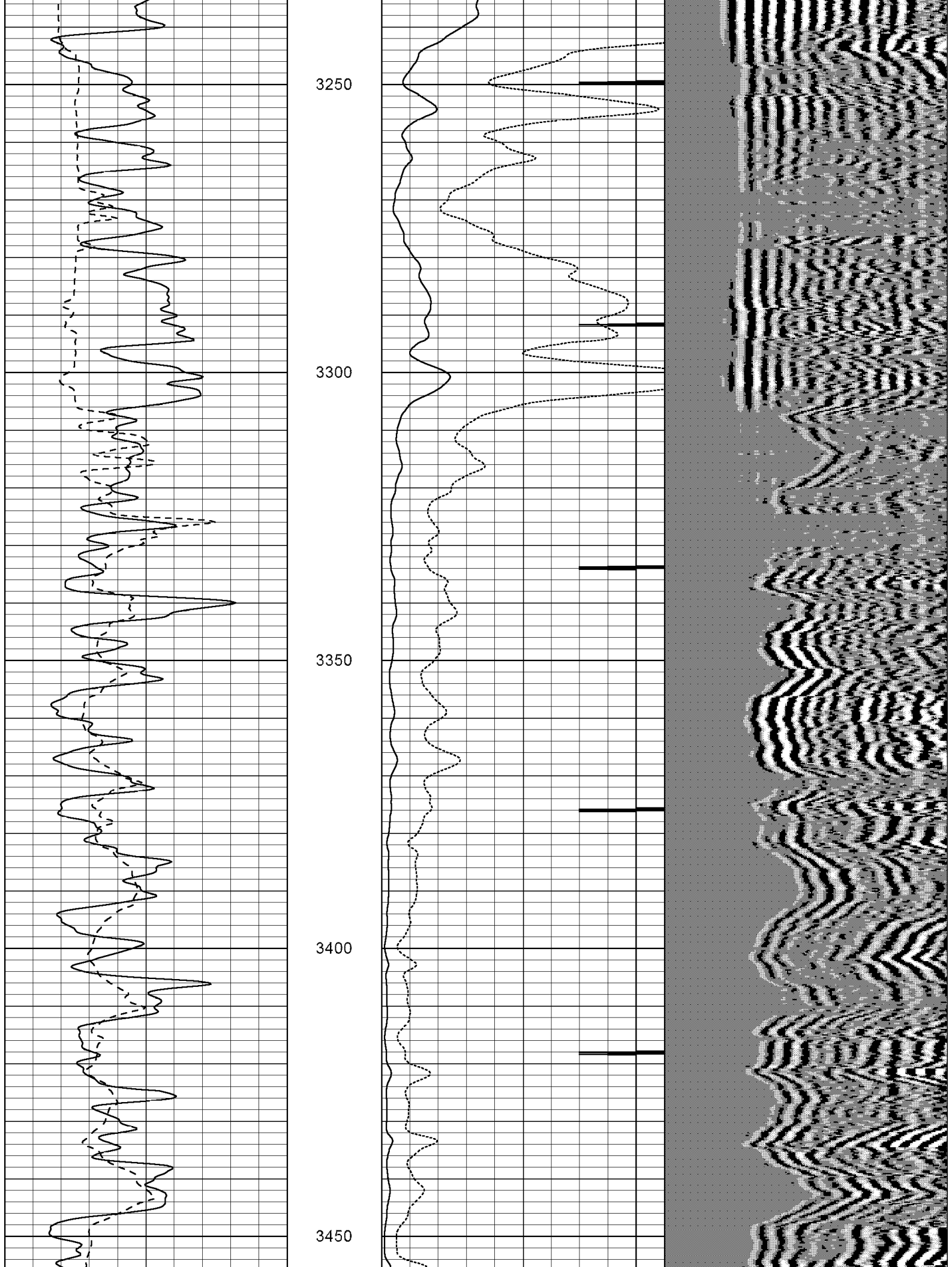


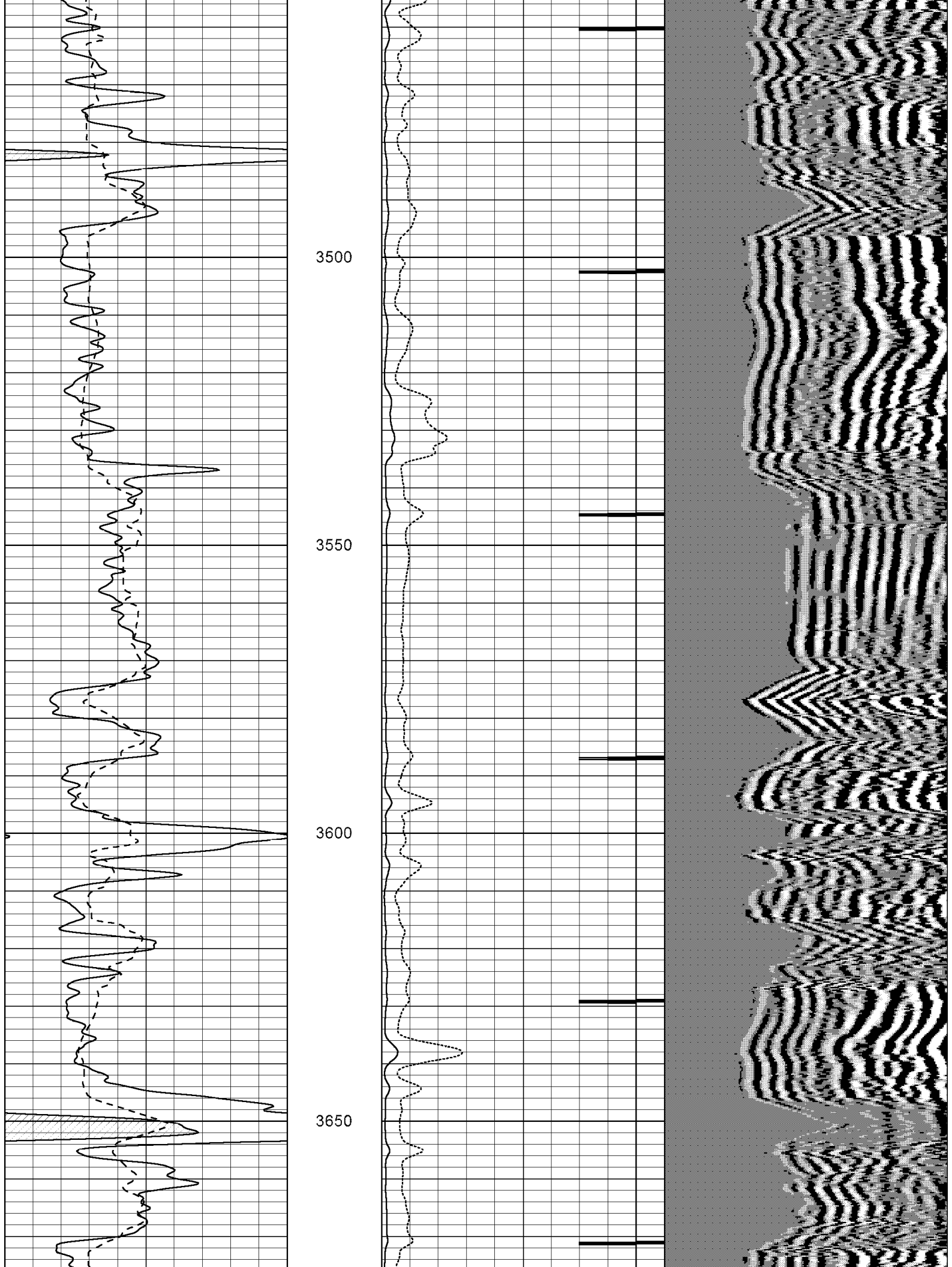
MAIN SECTION

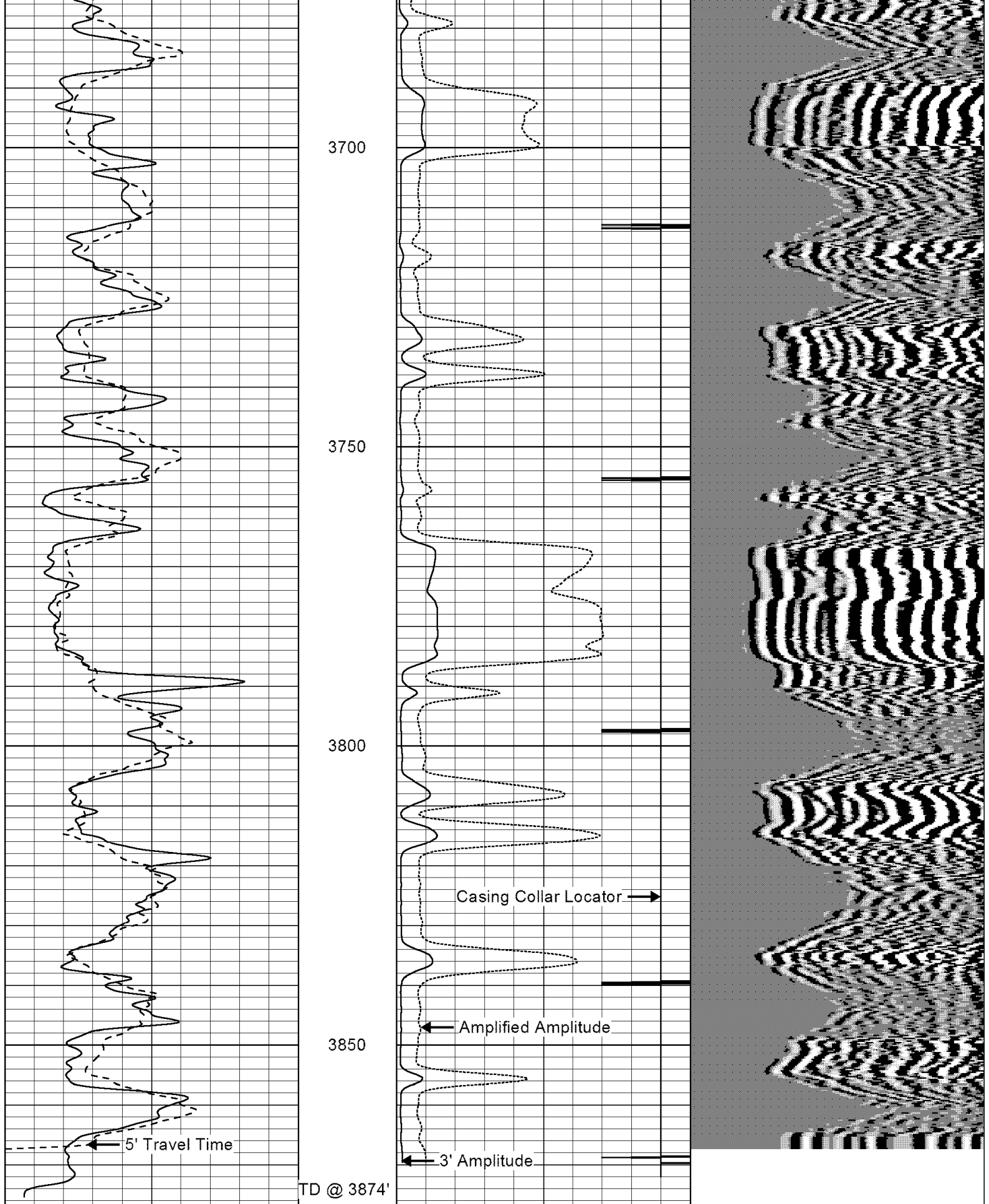
Database File: 010111grb.db
 Dataset Pathname: pass7M1
 Presentation Format: dcbl02
 Dataset Creation: Thu Nov 15 13:14:41 2012
 Charted by: Depth in Feet scaled 1:240

0	Gamma Ray (GAPI)	150	0	3' Amplitude (mV)	100	200	5FT VDL	1000
200	5' Travel Time (usec)	1000	9	CCL	-1			
-----			0	Amplified Amplitude (mV)	20			









0	Gamma Ray (GAPI)	150
200	5' Travel Time (usec)	1000

0	3' Amplitude (mV)	100
9	CCL	-1
0	Amplified Amplitude (mV)	20

200	5FT VDL	1000
-----	---------	------

TD @ 3874'

Casing Collar Locator →

← Amplified Amplitude

← 3' Amplitude

← 5' Travel Time

