



**COMPLETION  
& PRODUCTION  
SERVICES CO.**

**MICRO  
LOG**

Company RITCHIE EXPLORATION, INC  
Well NAU 25C 1  
Field WILDCAT  
County FORD  
State KANSAS

Company RITCHIE EXPLORATION, INC  
Well NAU 25C 1  
Field WILDCAT  
County FORD State KANSAS

Location: API # : 15-057-20848-00-00  
SW - NE - SW  
1798' FSL & 1538' FWL  
SEC 25 TWP 26S RGE 23W  
Permanent Datum GROUND LEVEL Elevation 2418  
Log Measured From KELLY BUSHING 12' A.G.L.  
Drilling Measured From KELLY BUSHING  
Elevation  
K.B. 2430  
D.F. 2428  
G.L. 2418

Date	11/01/2012
Run Number	ONE
Depth Driller	5090
Depth Logger	5091
Bottom Logged Interval	5074
Top Log Interval	3400
Casing Driller	8 5/8" @ 372
Casing Logger	369
Bit Size	7 7/8
Type Fluid in Hole	CHEMICAL MUD
Density / Viscosity	9.2/55
pH / Fluid Loss	10.5/11.6
Source of Sample	FLOWLINE
Rim @ Meas. Temp	.6@86F
Rmf @ Meas. Temp	.474@86F
Rmc @ Meas. Temp	.72@86
Source of Rmf / Rmc	MEASURED
Rim @ BHT	.403@128F
Time Circulation Stopped	2 HOURS
Time Logger on Bottom	9:45 P.M.
Maximum Recorded Temperature	128
Equipment Number	680
Location	HAYS, KS.
Recorded By	MIKE GARRISON
Witnessed By	ADAM ELDANI

<<< Fold Here >>>

All interpretations are opinions based on inferences from electrical or other measurements and we cannot and do not guarantee the accuracy or correctness of any interpretation, and we shall not, except in the case of gross or willful negligence on our part, be liable or responsible for any loss, costs, damages, or expenses incurred or sustained by anyone resulting from any interpretation made by any of our officers, agents or employees. These interpretations are also subject to our general terms and conditions set out in our current Price Schedule.

**Comments**

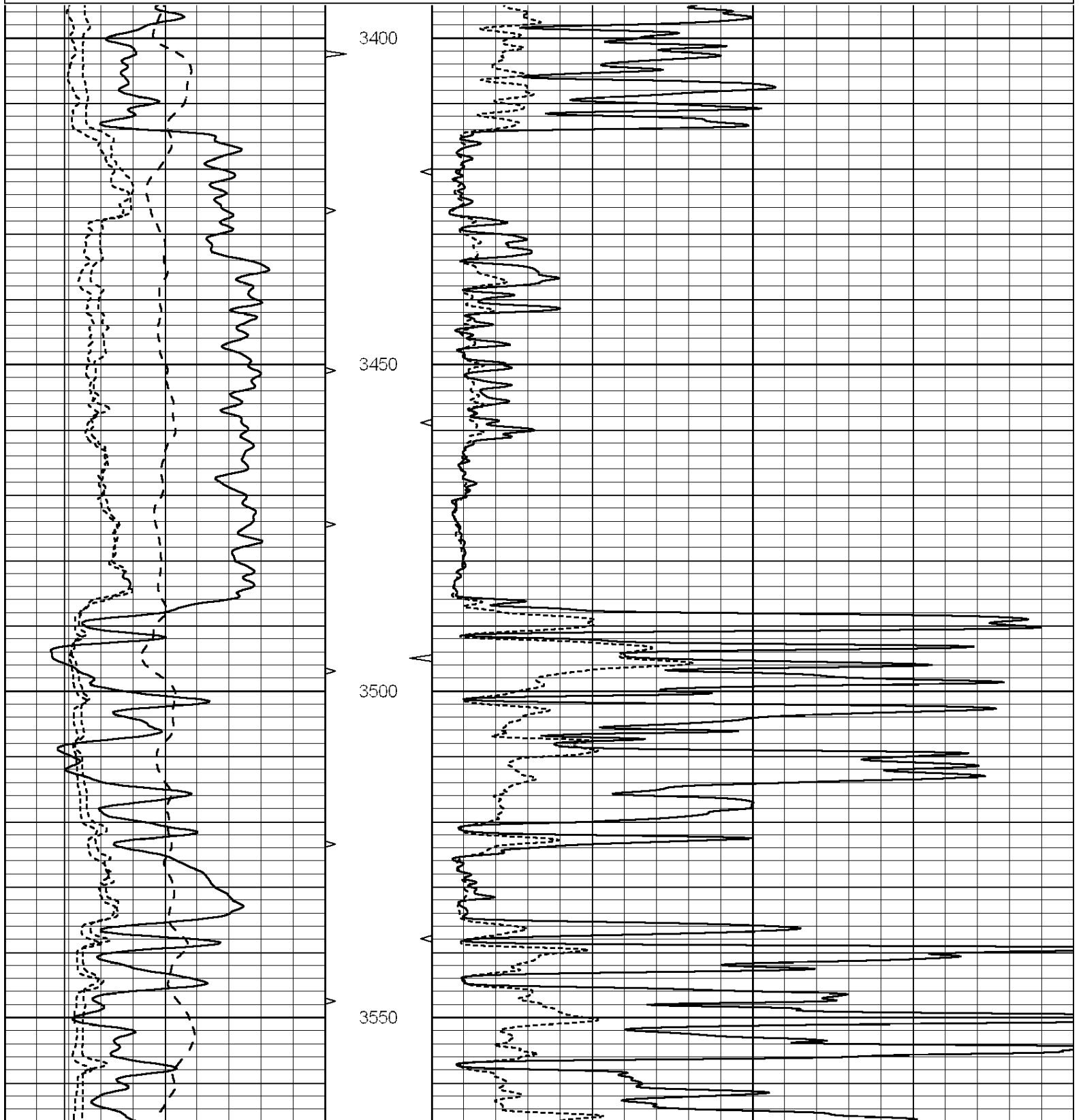
THANK YOU FOR USING NABORS COMPLETION & PRODUCTION SERVICES(785) 628-6395  
DIRECTIONS  
SPEARVILLE, 1 SOUTH, 1/2 EAST, 4 SOUTH, 3 WEST, 1/2 SOUTH, EAST INTO

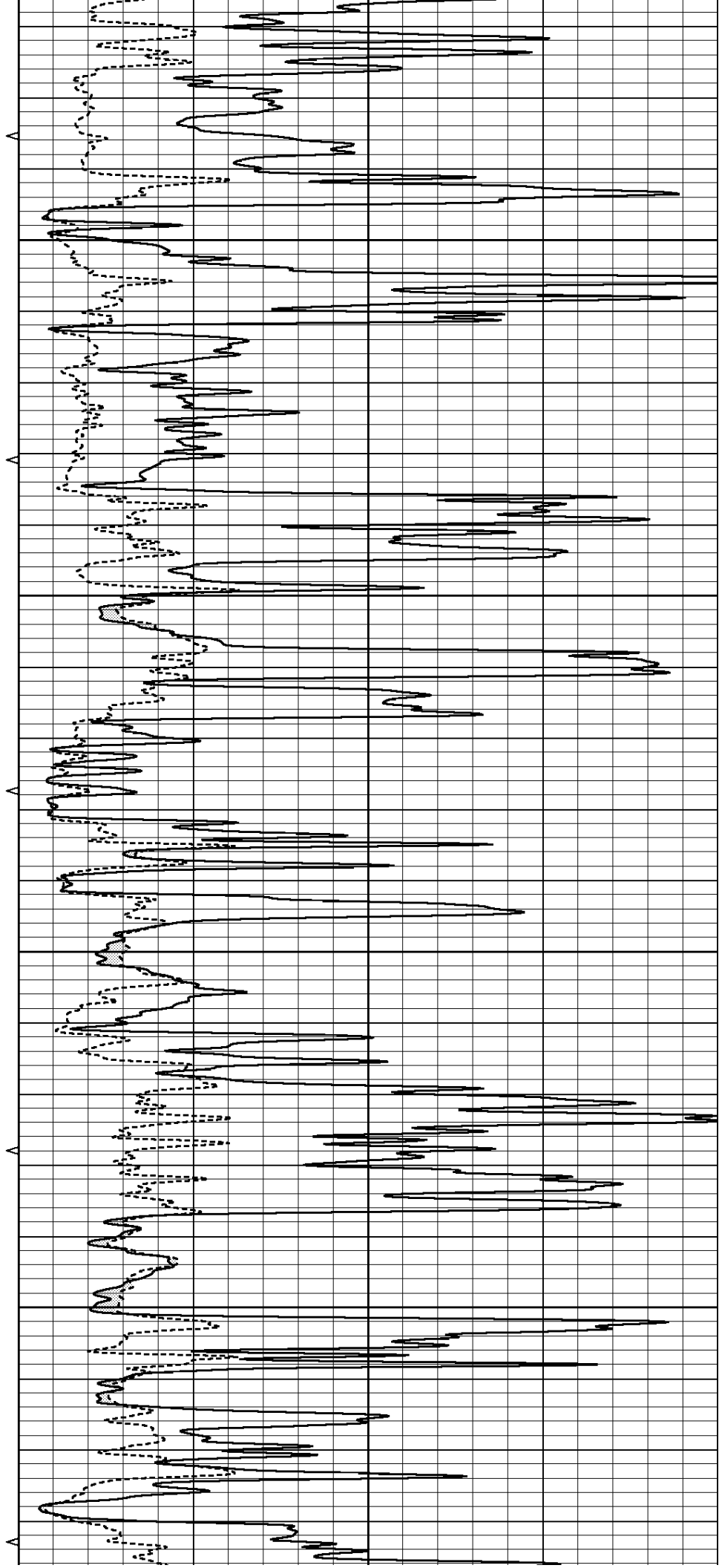
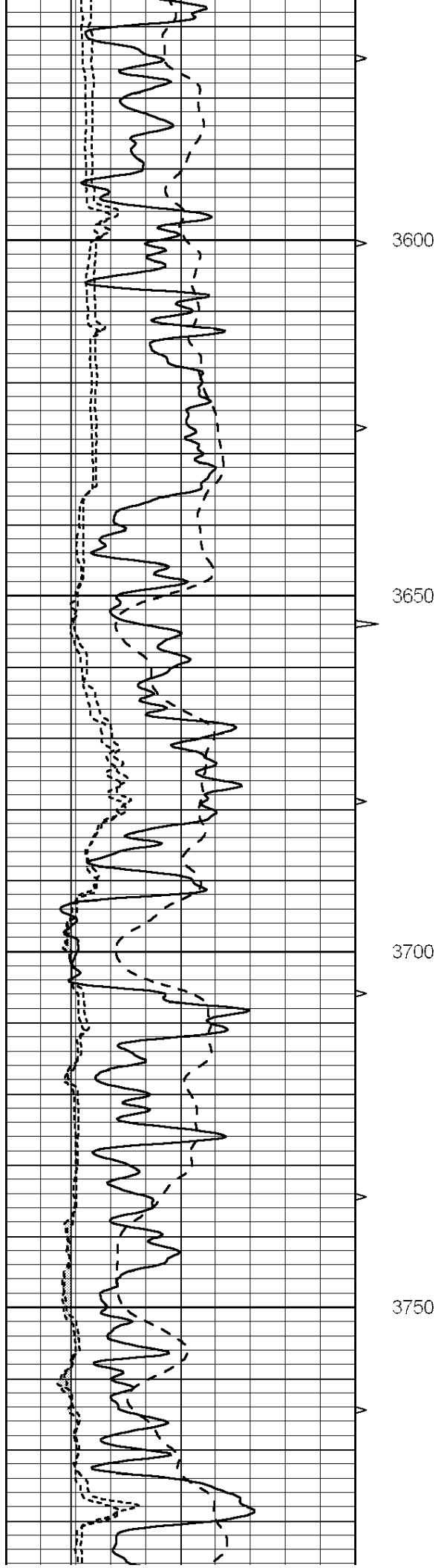


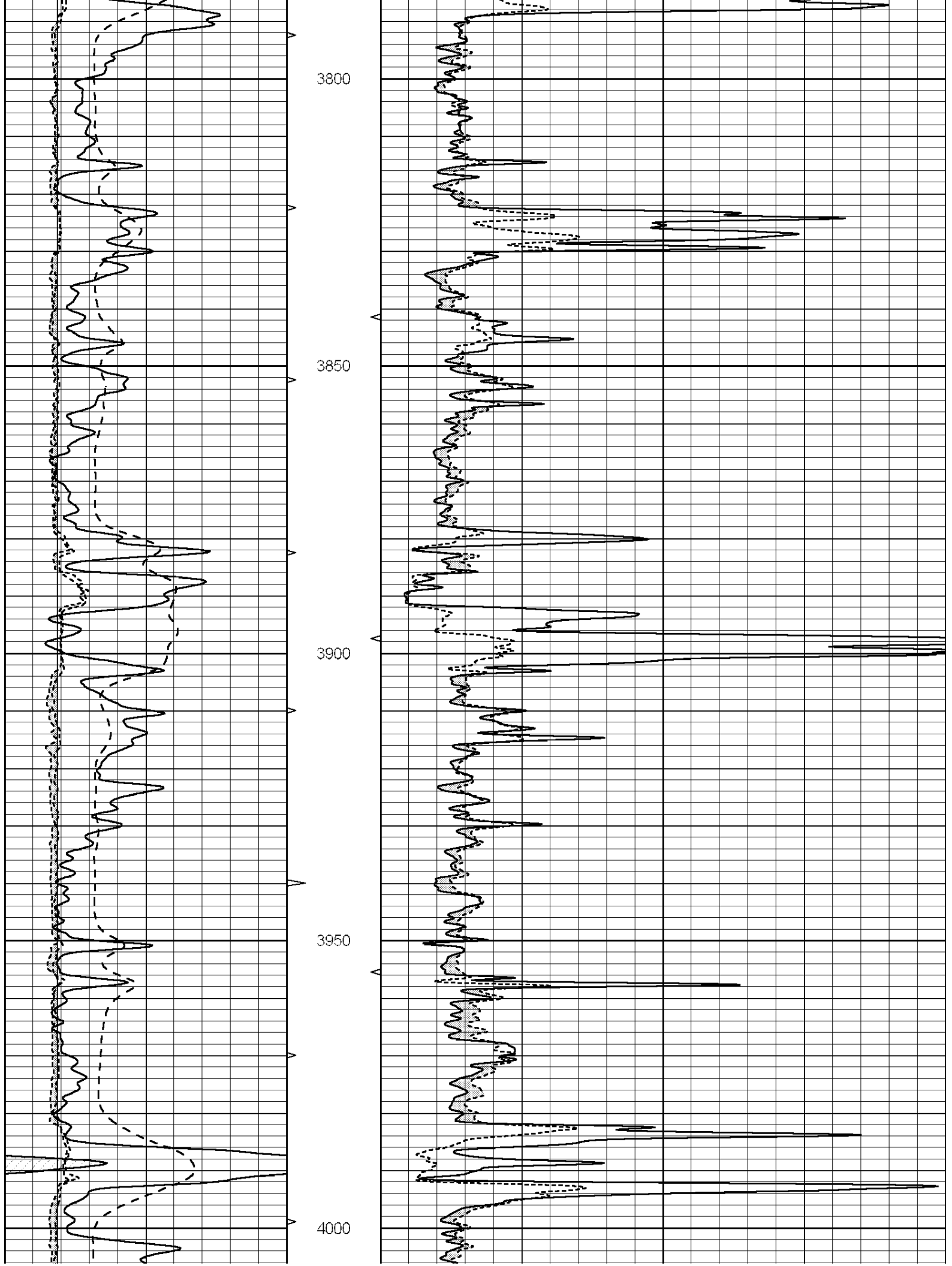
**MAIN SECTION**

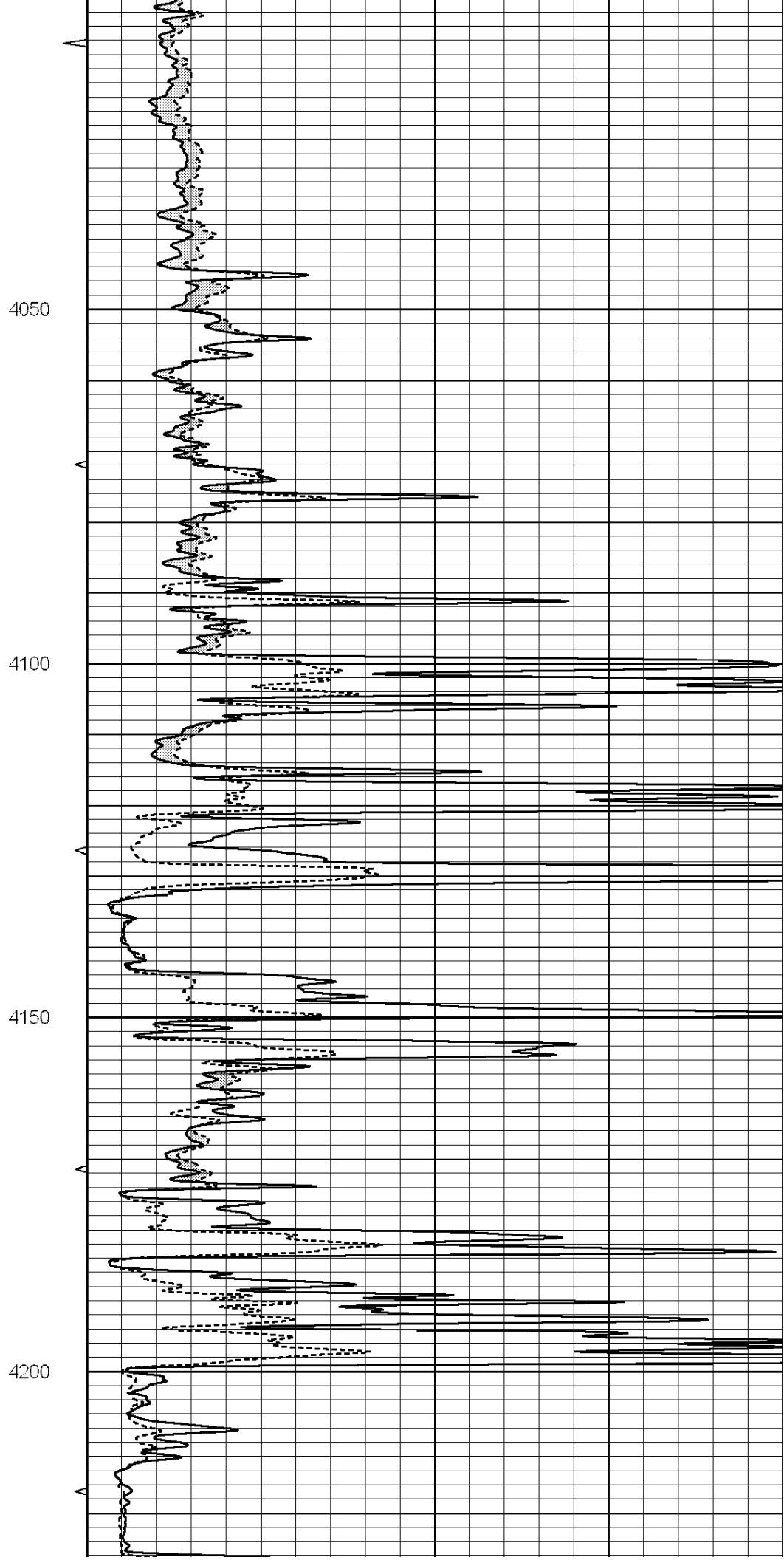
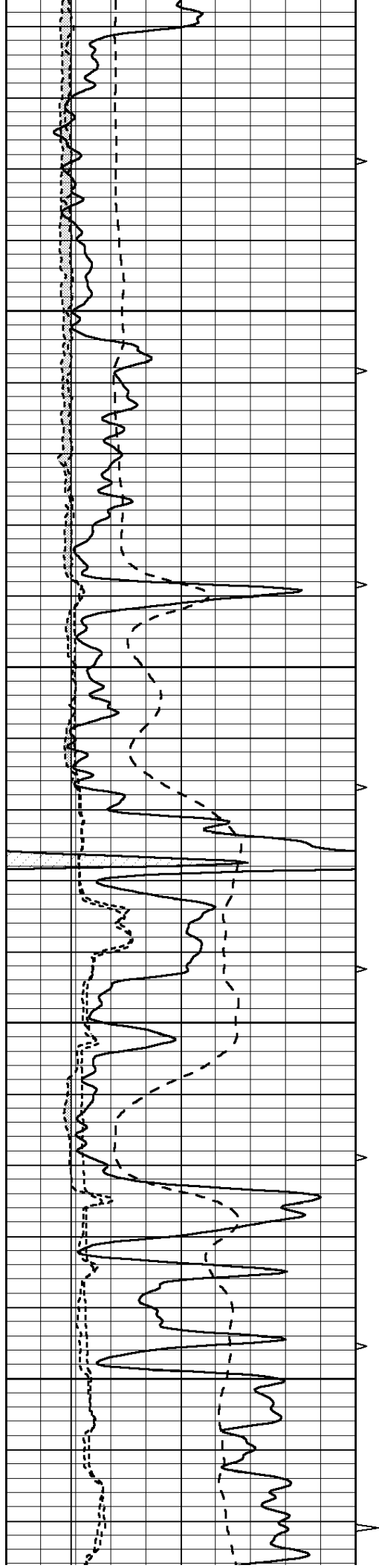
Database File: 40-009992ddn.db  
 Dataset Pathname: pass3.1  
 Presentation Format: \_micro  
 Dataset Creation: Thu Nov 01 23:00:21 2012 by Calc Open-Cased 090629  
 Charted by: Depth in Feet scaled 1:240

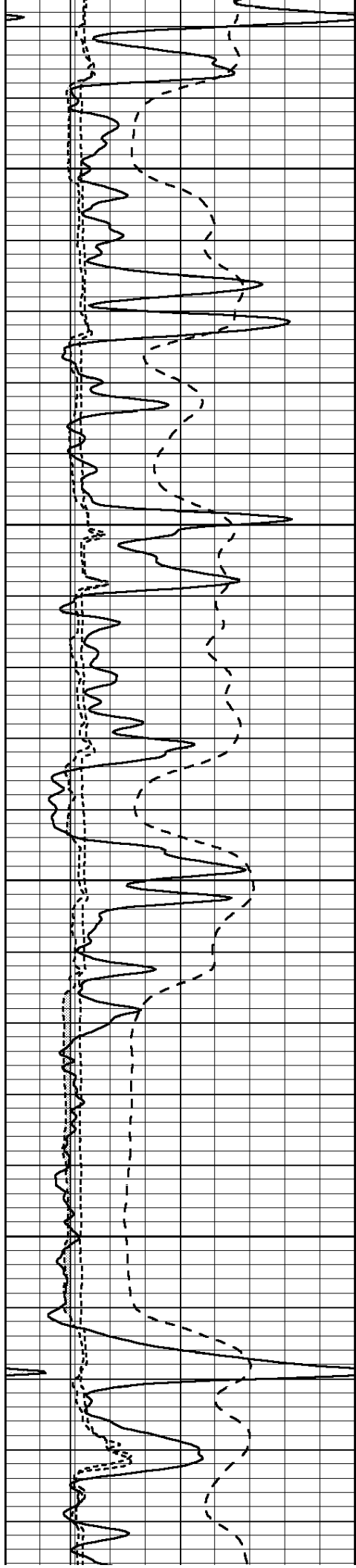
0	GAMMA RAY (GAPI)	150	ABHV	0	MEL1.5 (Ohm-m)	40
6	CALIPER (in)	16	10 (ft3)	0	MEL2.0 (Ohm-m)	40
-100	SP (mV)	100	TBHV			
6	CALIPER (in)	16	0 (ft3)	10		









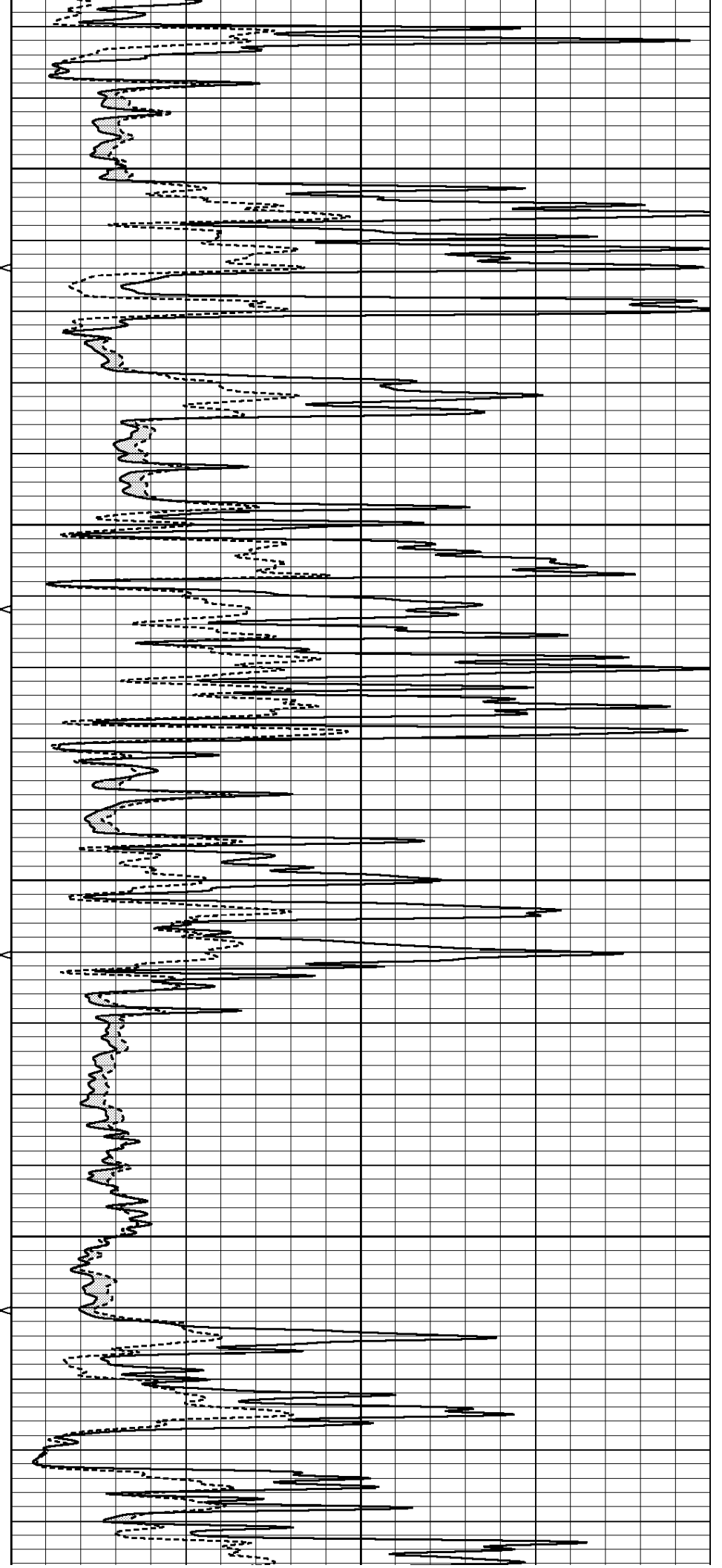


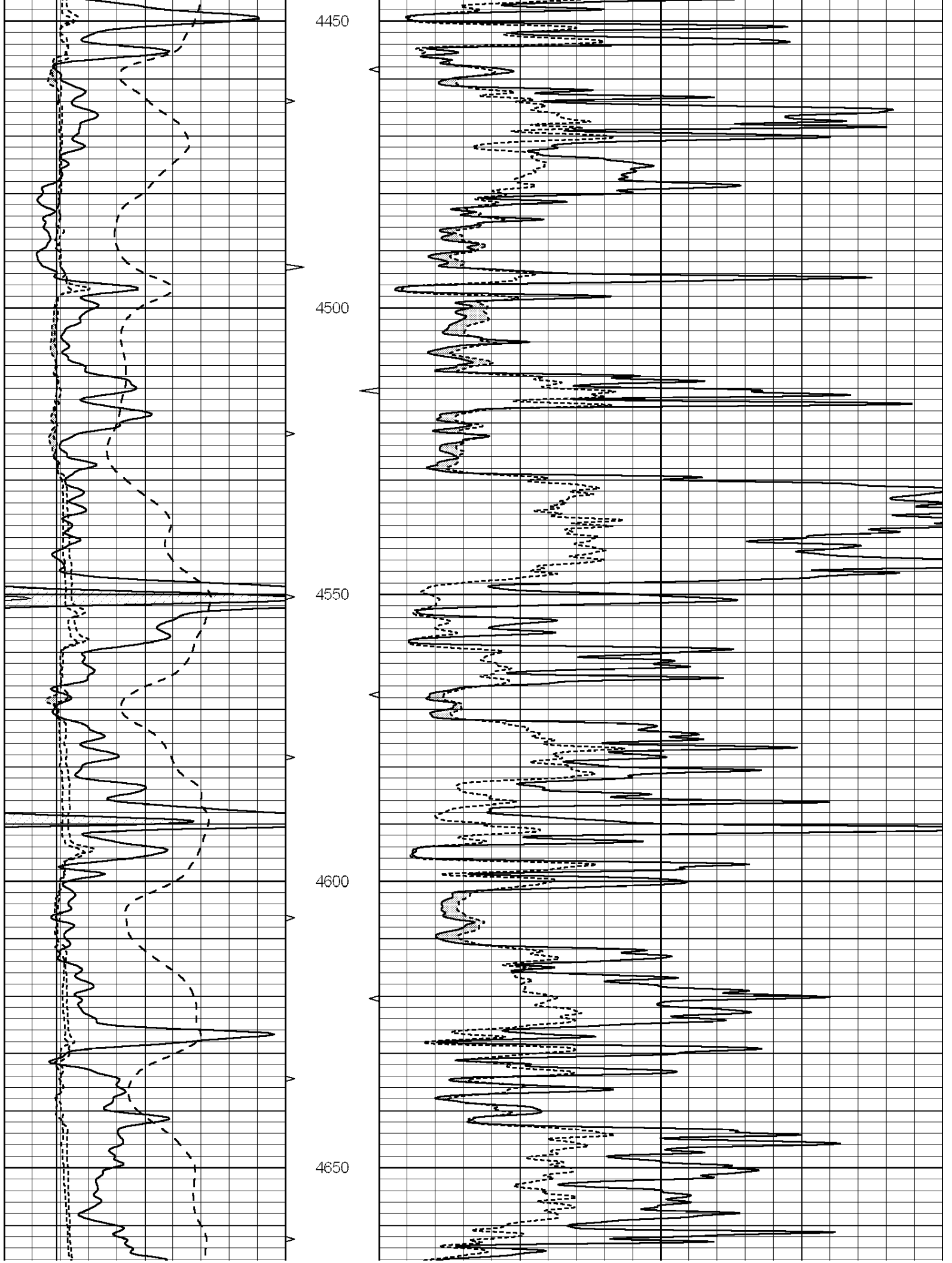
4250

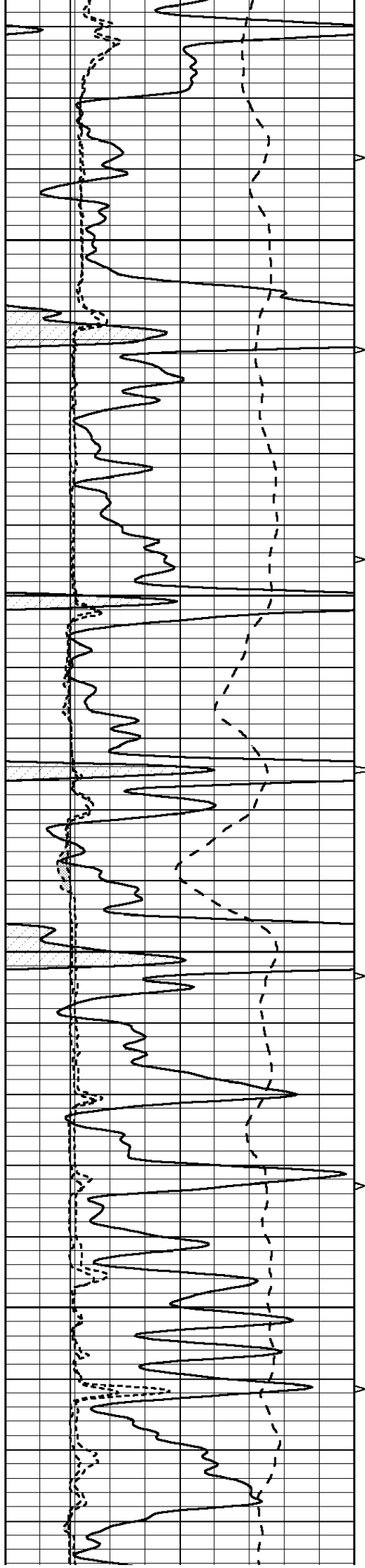
4300

4350

4400





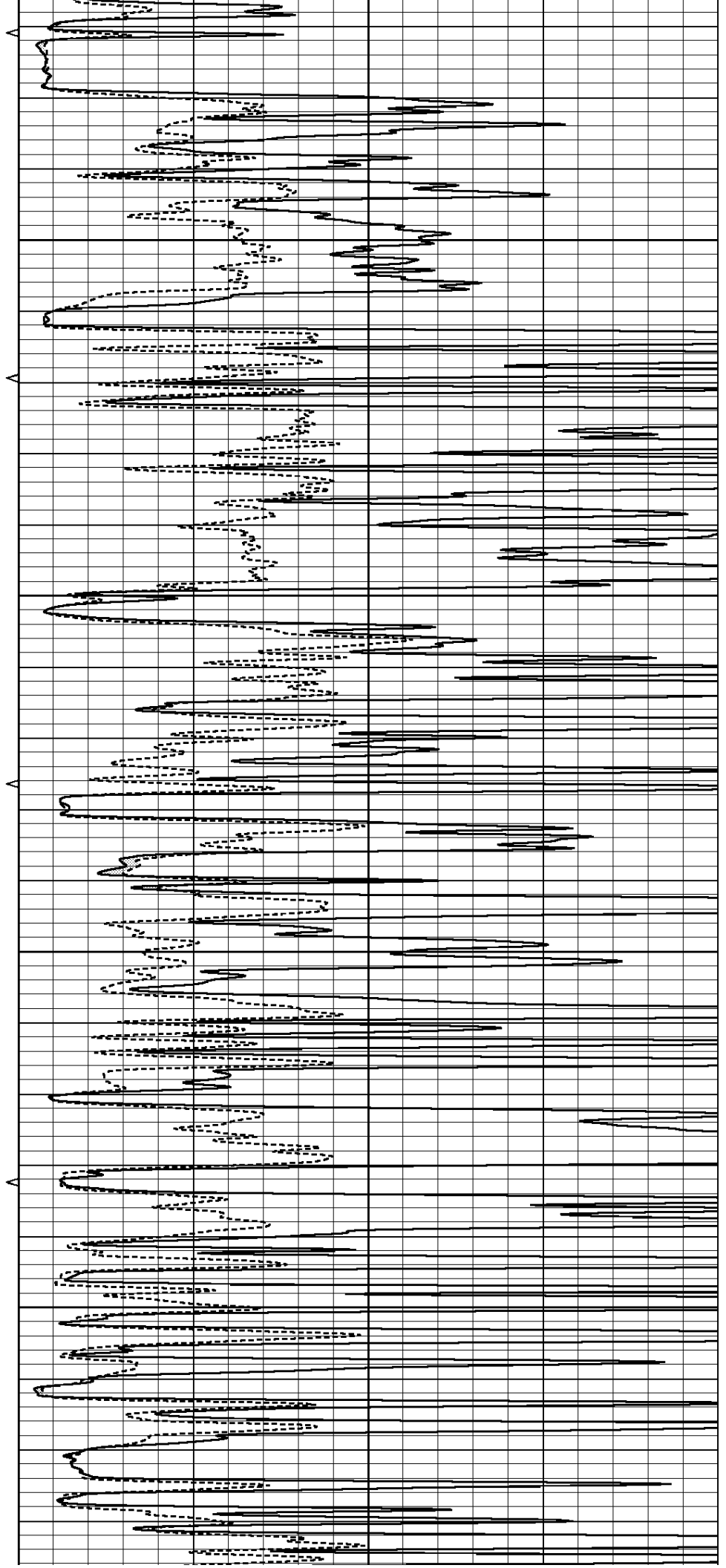


4700

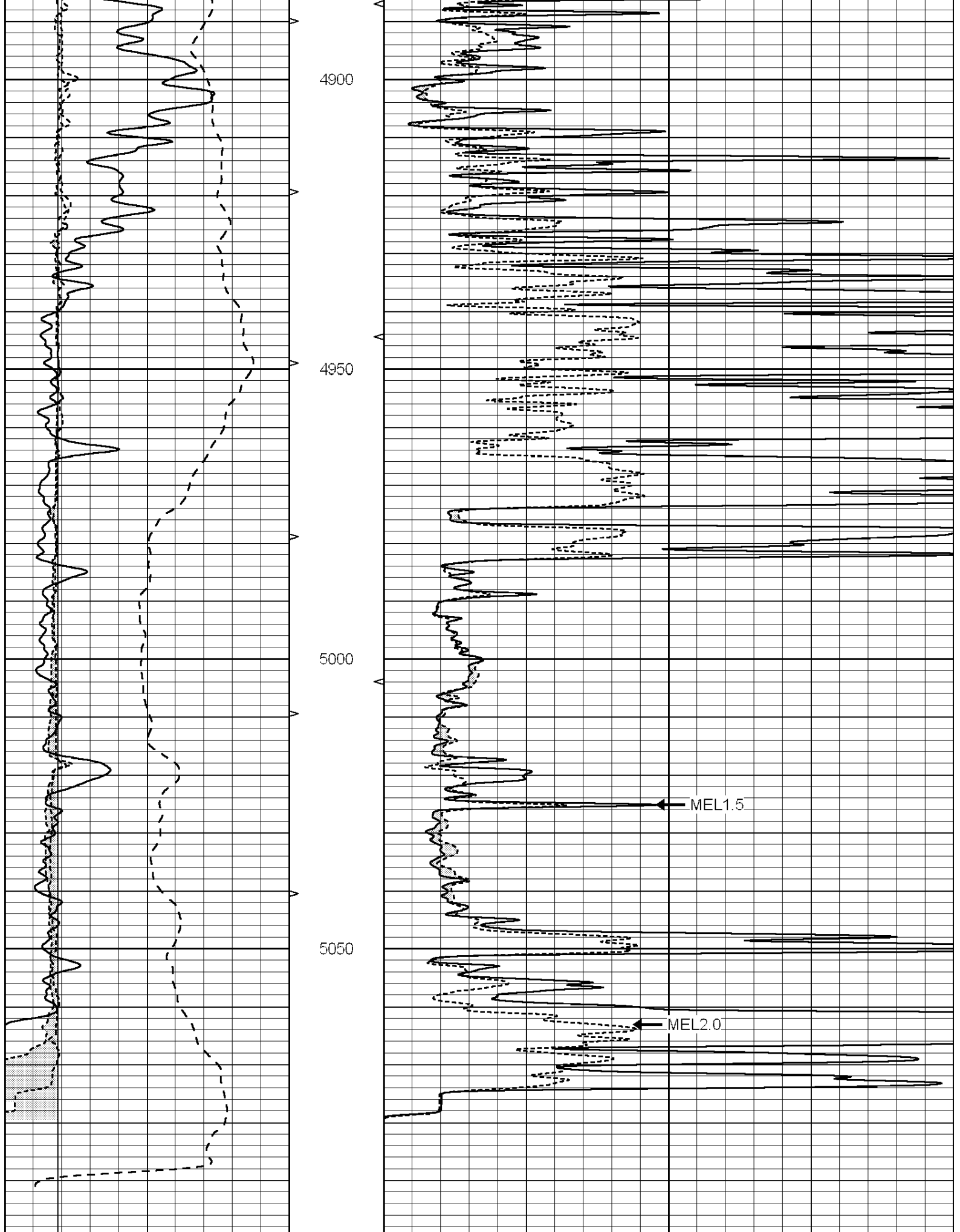
4750

4800

4850







0 GAMMA RAY (GAPI) 150 ABHV 0 MEL1.5 (Ohm-m) 40  
 6 CALIBER (in) 16 1/2 (#3) 0.0 MEL2.0 (Ohm-m) 40

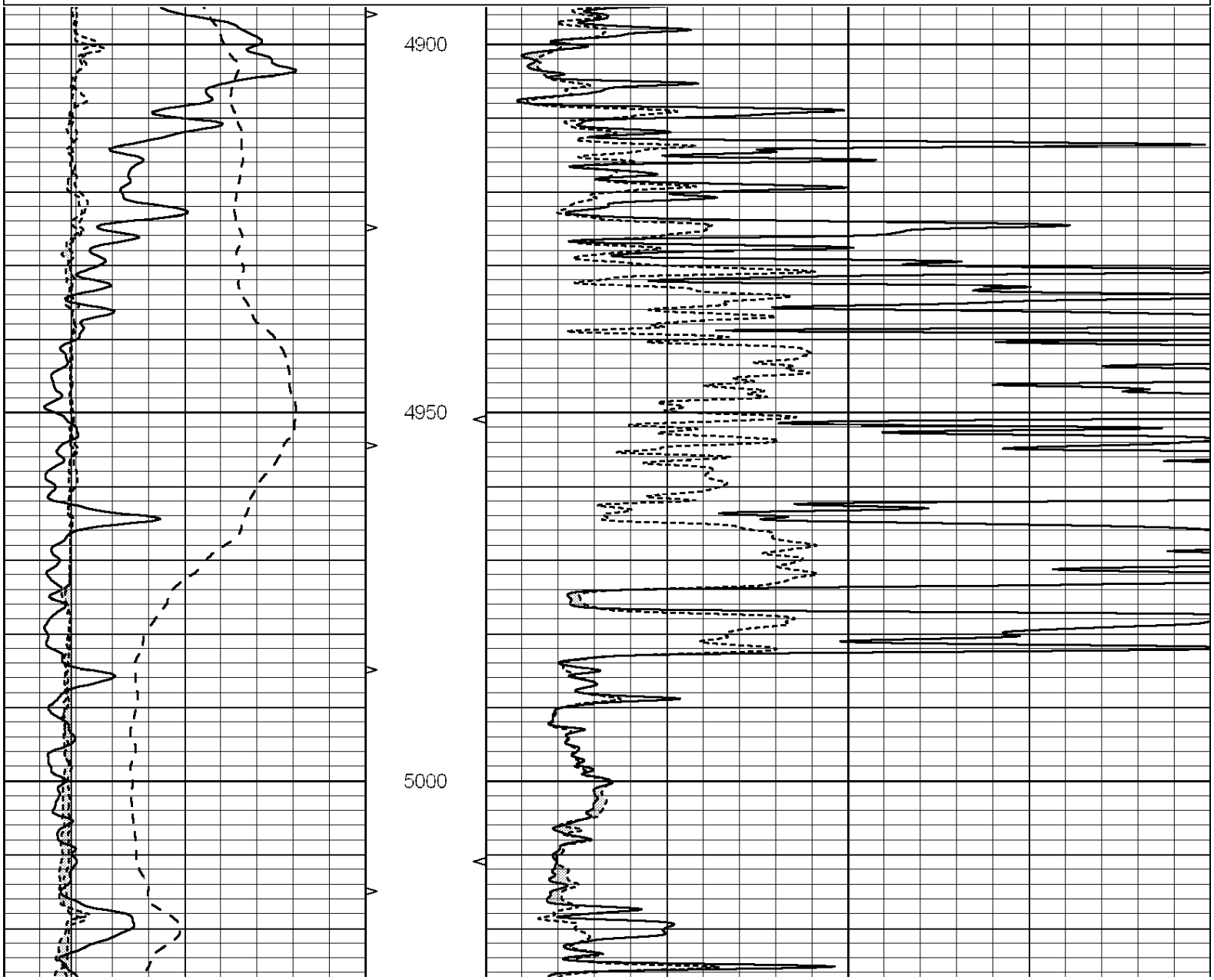
-100	CALIPER (in)	100	TBHV	MEL2.0 (Ohm-m)	40
6	SP (mV)	16	0		
6	CALIPER (in)	16	0	(ft3)	10

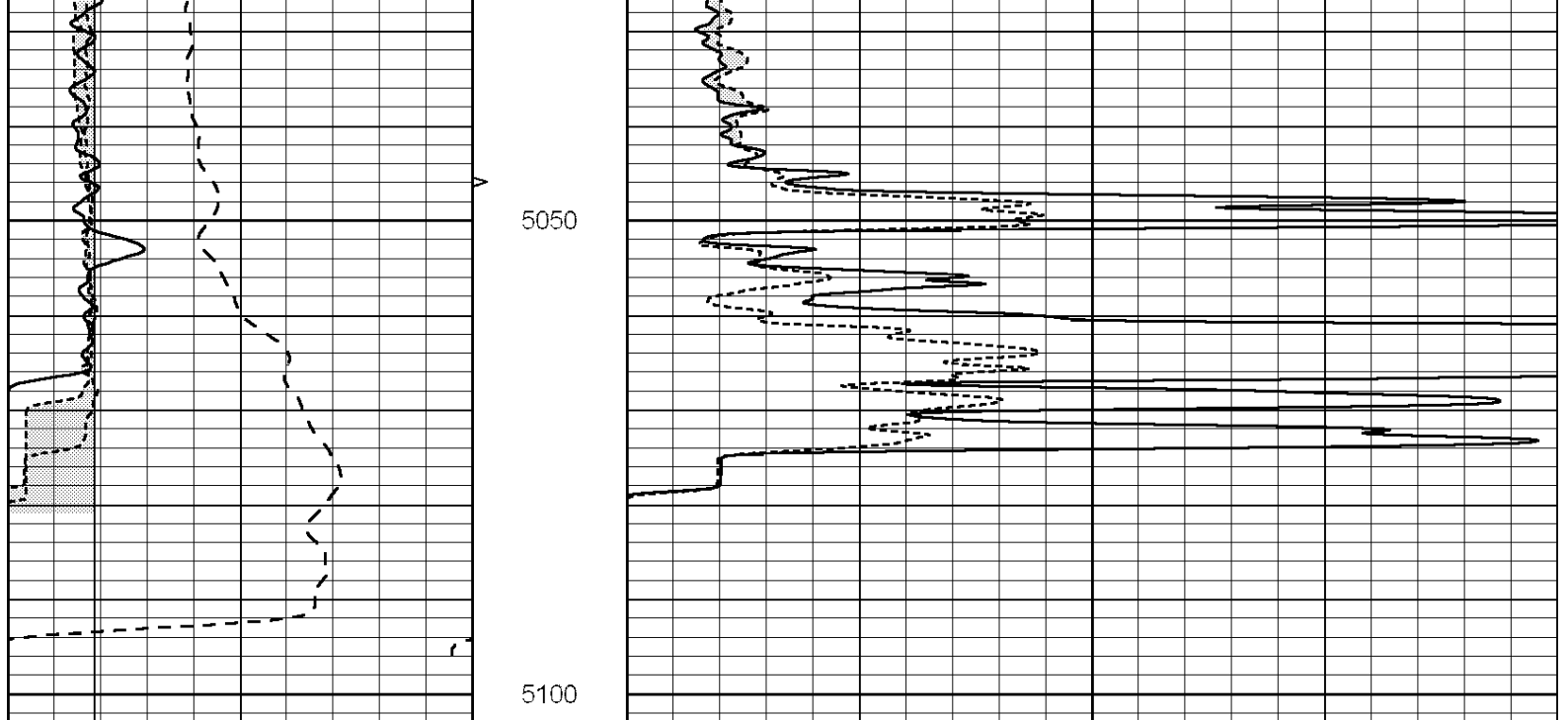


# REPEAT SECTION

Database File: 40-009992ddn.db  
 Dataset Pathname: pass2.2  
 Presentation Format: \_micro  
 Dataset Creation: Thu Nov 01 23:42:38 2012 by Calc Open-Cased 090629  
 Charted by: Depth in Feet scaled 1:240

0	GAMMA RAY (GAPI)	150	ABHV	0	MEL1.5 (Ohm-m)	40
6	CALIPER (in)	16	10 (ft3)	0	MEL2.0 (Ohm-m)	40
-100	SP (mV)	100	TBHV			
6	CALIPER (in)	16	0	(ft3)	10	





0	GAMMA RAY (GAPI)	150	ABHV	0	MEL1.5 (Ohm-m)	40
6	CALIPER (in)	16	10 (ft3)	0	MEL2.0 (Ohm-m)	40
-100	SP (mV)	100	TBHV			
6	CALIPER (in)	16	0 (ft3)	10		