



**COMPLETION
& PRODUCTION
SERVICES CO.**

**DUAL
INDUCTION
LOG**

Company	RITCHE EXPLORATION, INC	Location:	API # : 15-057-20848-00-00	Other Services
Well	NAU 25C 1		SW - NE - SW	DIL
Field	WILDCAT		1798' FSL & 1538' FWL	MEL/SON
County	FORD	State	KANSAS	

Permanent Datum	GROUND LEVEL	Elevation	2418
Log Measured From	KELLY BUSHING	12' A.G.L.	
Drilling Measured From	KELLY BUSHING		
	SEC 25	TWP 26S	RGE 23W
			Elevation
			K.B. 2430
			D.F. 2428
			G.L. 2418

Date	11/01/2012
Run Number	ONE
Depth Driller	5090
Depth Logger	5091
Bottom Logged Interval	5090
Top Log Interval	0
Casing Driller	8 5/8" @ 372
Casing Logger	369
Bit Size	7 7/8
Type Fluid in Hole	CHEMICAL MUD
Density / Viscosity	9.2/55
pH / Fluid Loss	10.5/11.6
Source of Sample	FLOWLINE
Rim @ Meas. Temp	.6@86F
Rmf @ Meas. Temp	.474@86F
Rmc @ Meas. Temp	.72@86
Source of Rmf / Rmc	MEASURED
Rim @ BHT	.403@128F
Time Circulation Stopped	2 HOURS
Time Logger on Bottom	9:45 P.M.
Maximum Recorded Temperature	128
Equipment Number	680
Location	HAYS, KS.
Recorded By	MIKE GARRISON
Witnessed By	ADAM ELDANI

<<< Fold Here >>>

All interpretations are opinions based on inferences from electrical or other measurements and we cannot and do not guarantee the accuracy or correctness of any interpretation, and we shall not, except in the case of gross or willful negligence on our part, be liable or responsible for any loss, costs, damages, or expenses incurred or sustained by anyone resulting from any interpretation made by any of our officers, agents or employees. These interpretations are also subject to our general terms and conditions set out in our current Price Schedule.

Comments

THANK YOU FOR USING NABORS COMPLETION & PRODUCTION SERVICES(785) 628-6395
DIRECTIONS
SPEARVILLE, 1 SOUTH, 1/2 EAST, 4 SOUTH, 3 WEST, 1/2 SOUTH, EAST INTO



MAIN SECTION

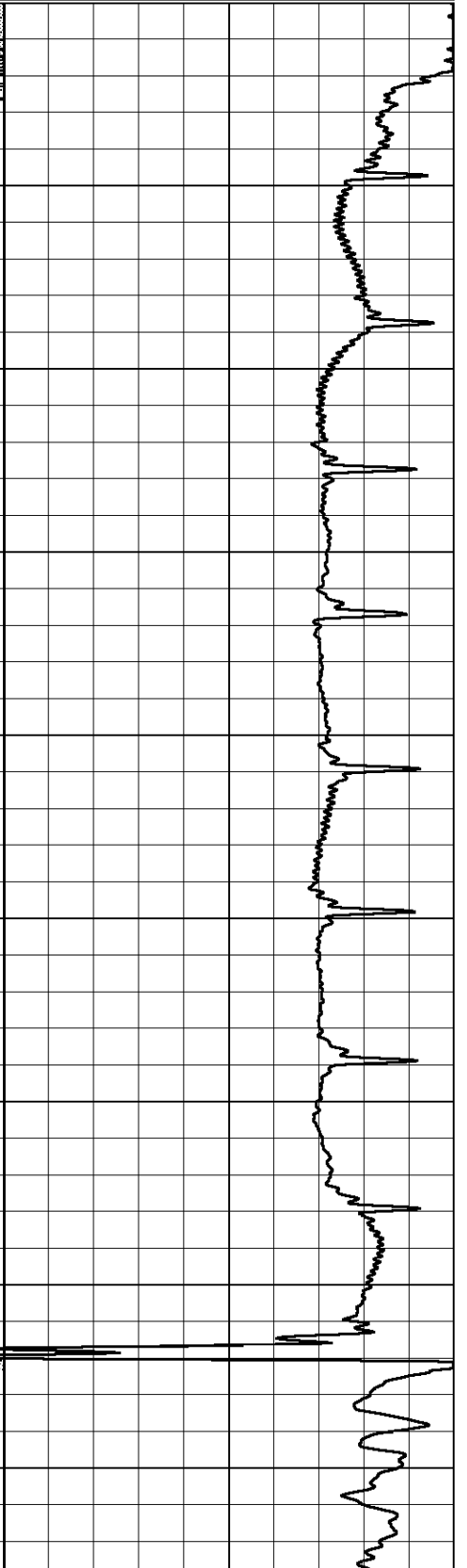
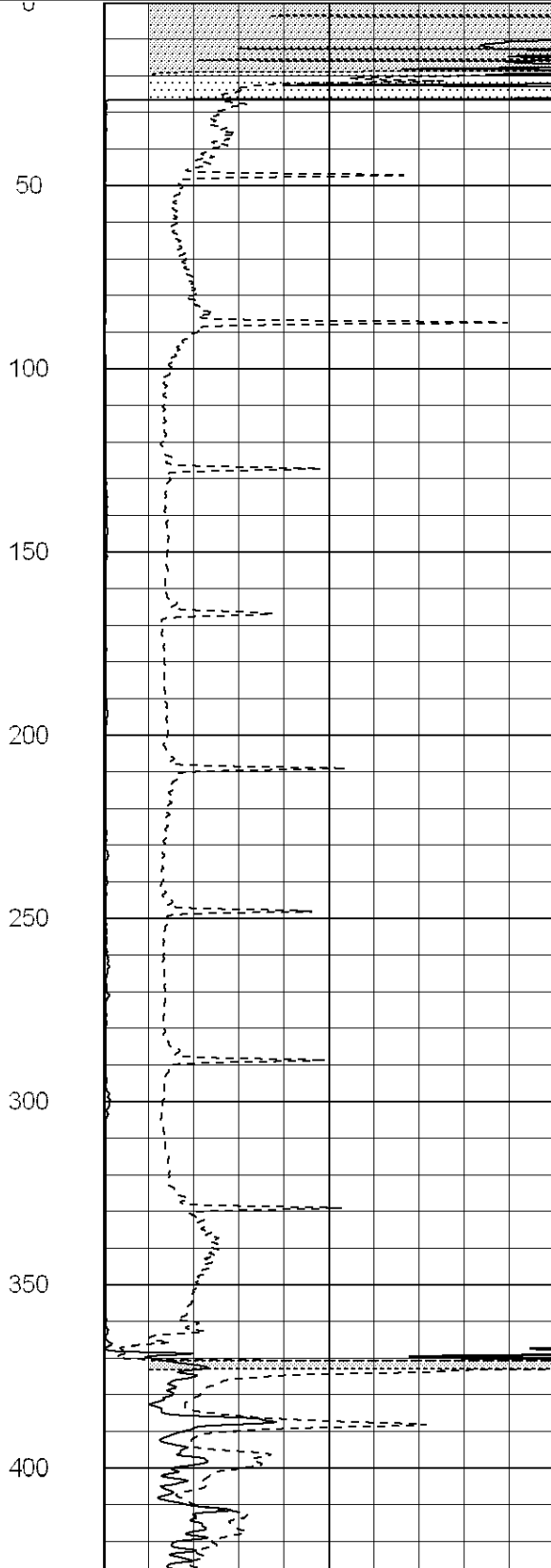
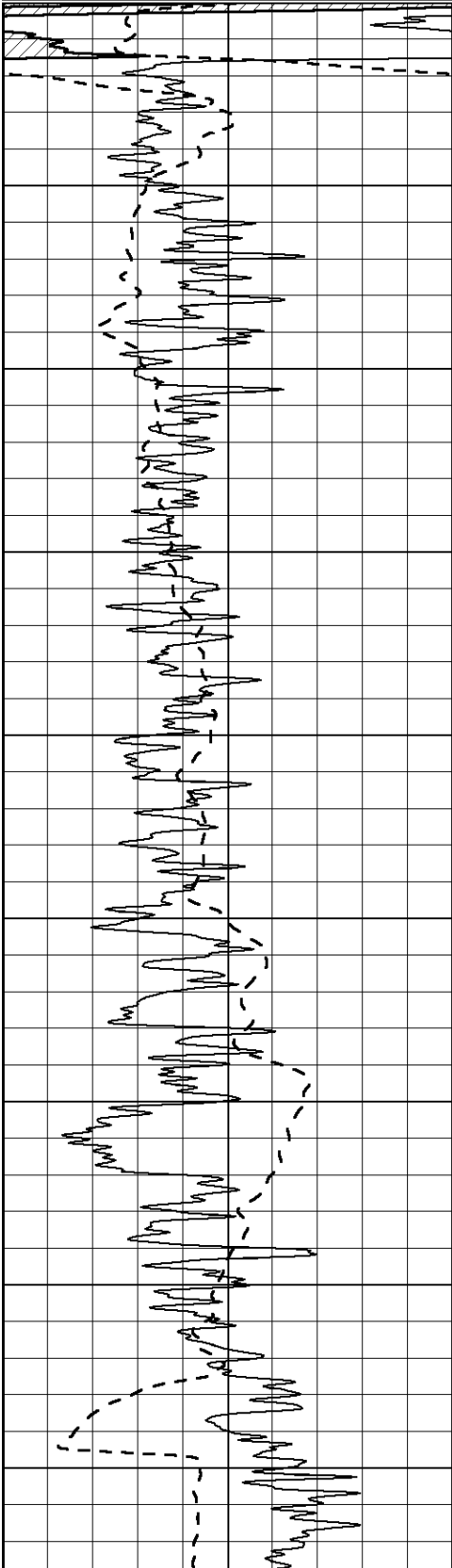
Database File: 40-009992ddn.db
 Dataset Pathname: pass3.2
 Presentation Format: _dil2
 Dataset Creation: Thu Nov 01 23:34:39 2012 by Calc Open-Cased 090629
 Charted by: Depth in Feet scaled 1:600

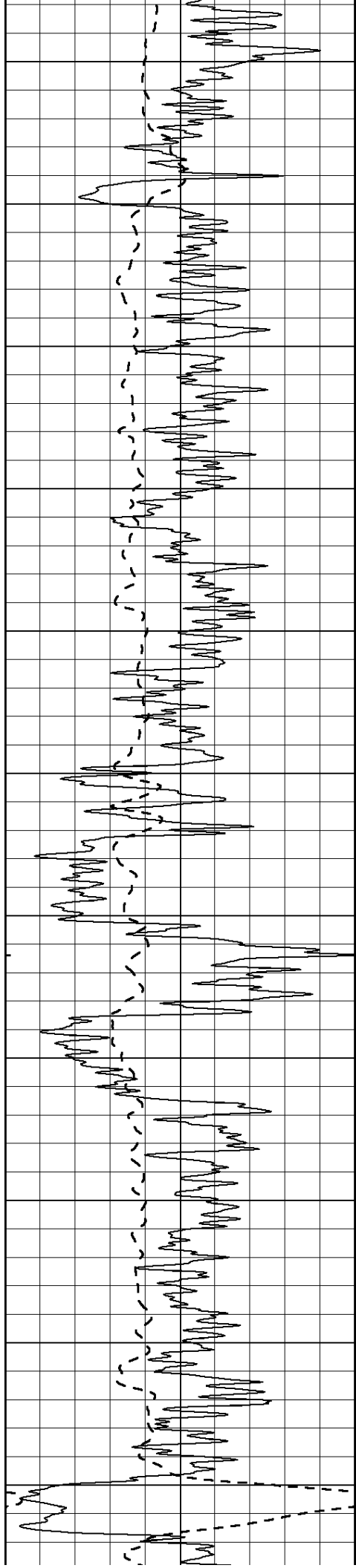
0 Gamma Ray (GAPI) 150
 -100 SP (mV) 100

0 RLL3 (Ohm-m) 50
 0 Deep Induction (Ohm-m) 50

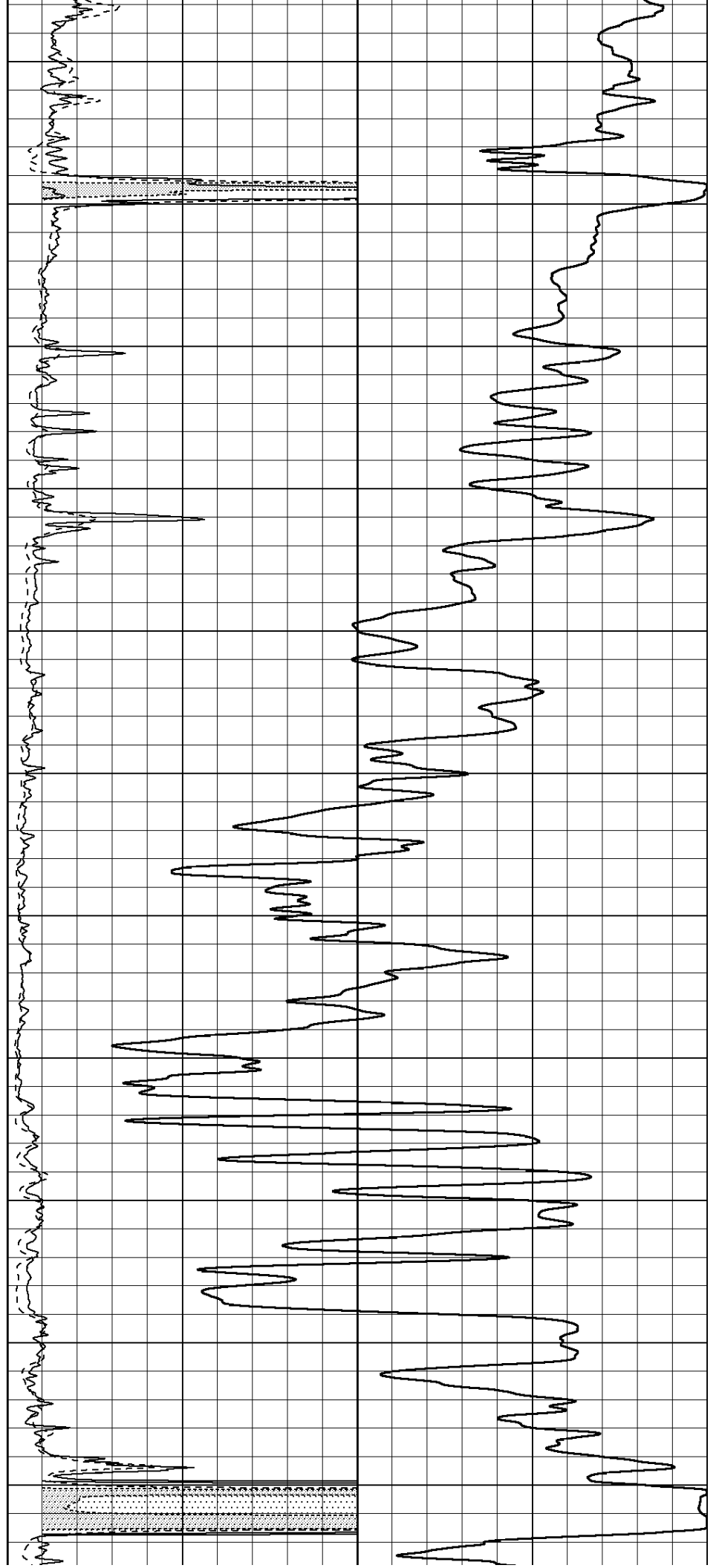
1000 CILD (mmho/m) 0

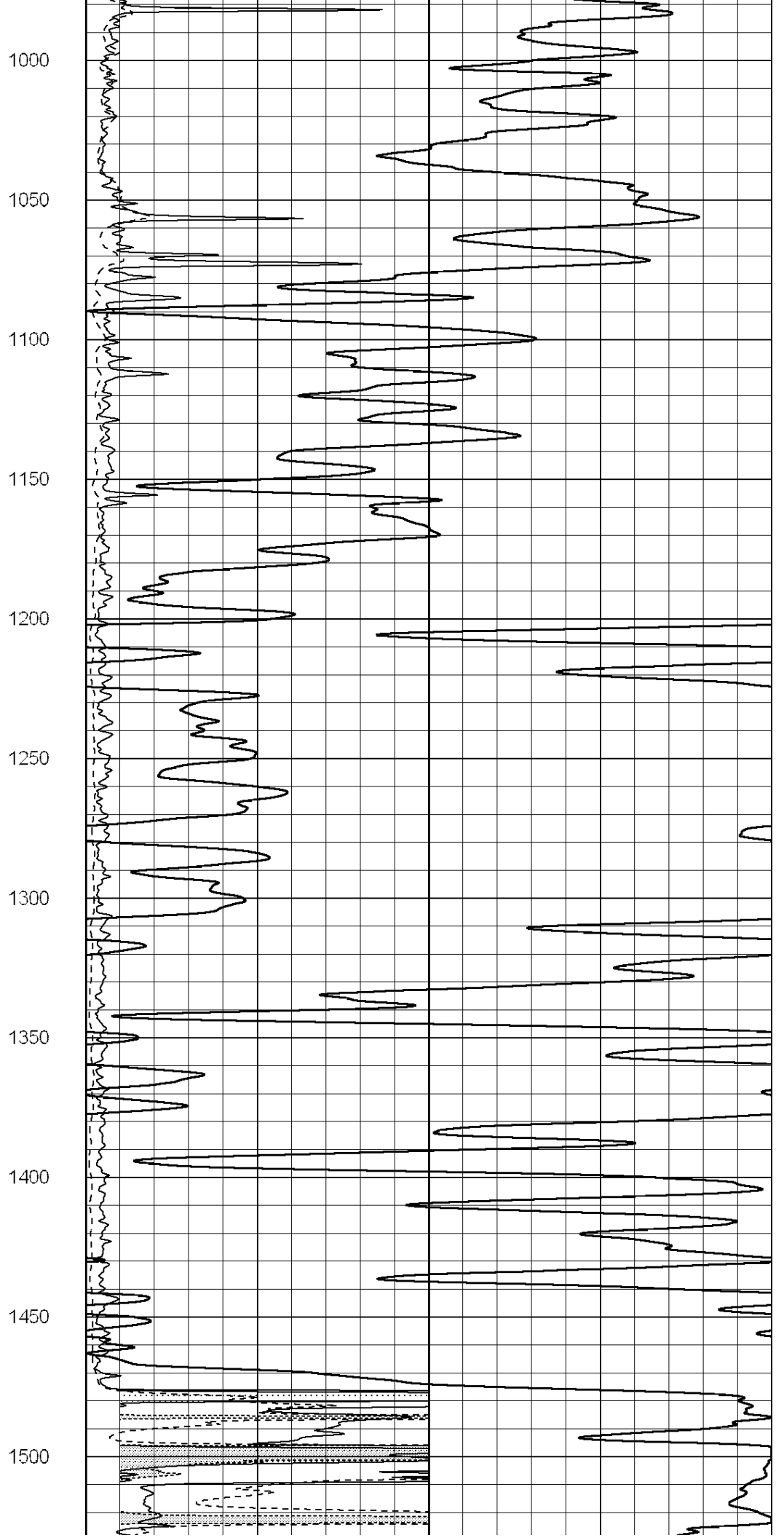
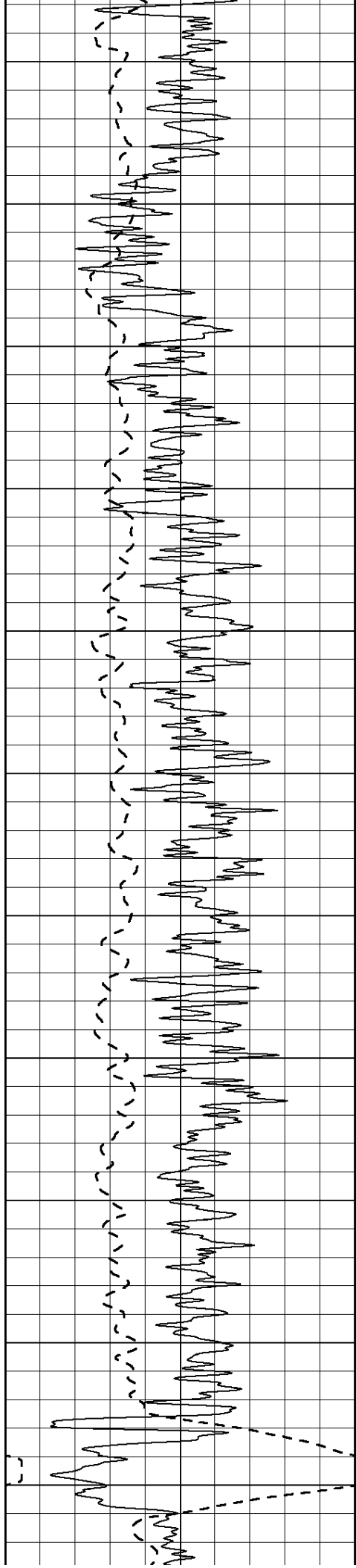
50 RILD X10 (Ohm-m) 500
 50 RLL3 X10 (Ohm-m) 500

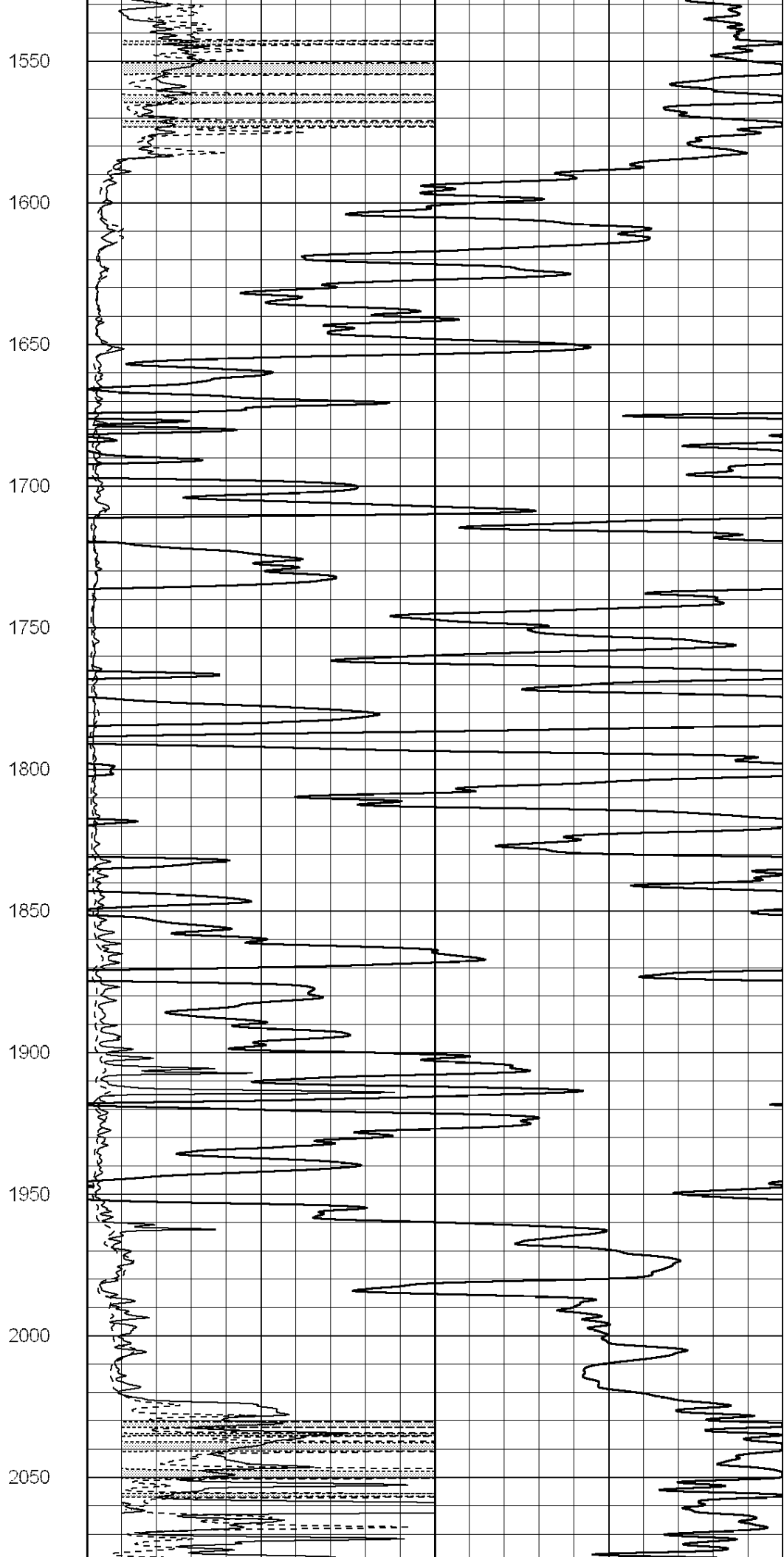
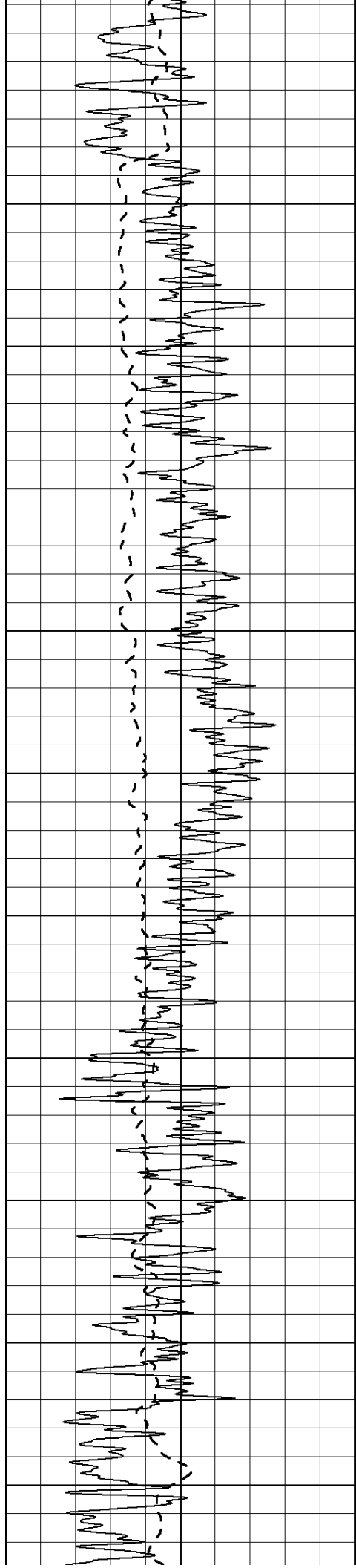


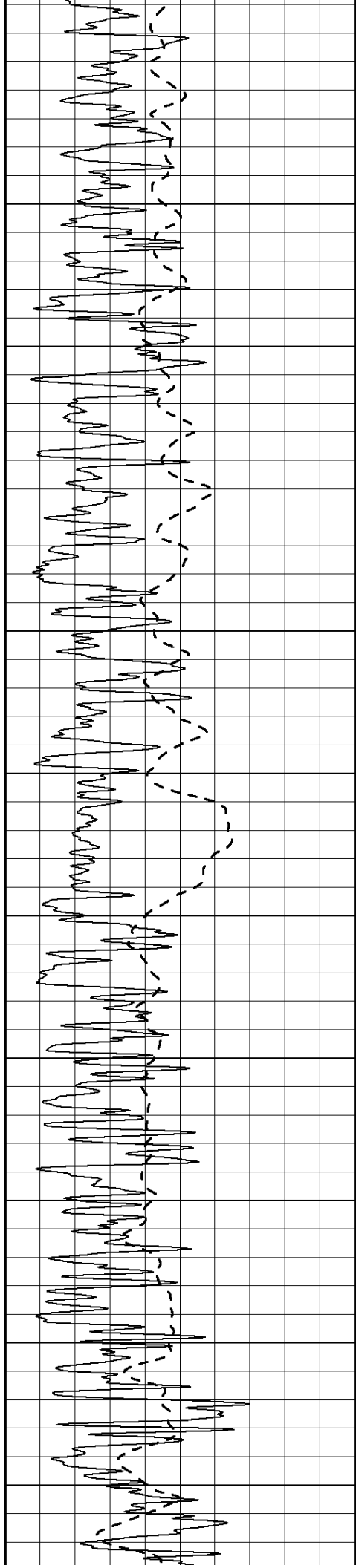


450
500
550
600
650
700
750
800
850
900
950









2100

2150

2200

2250

2300

2350

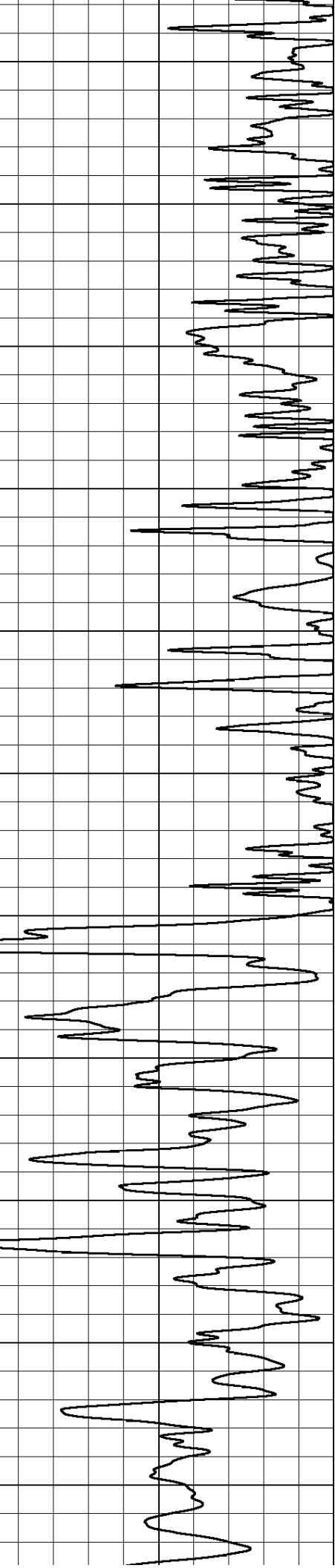
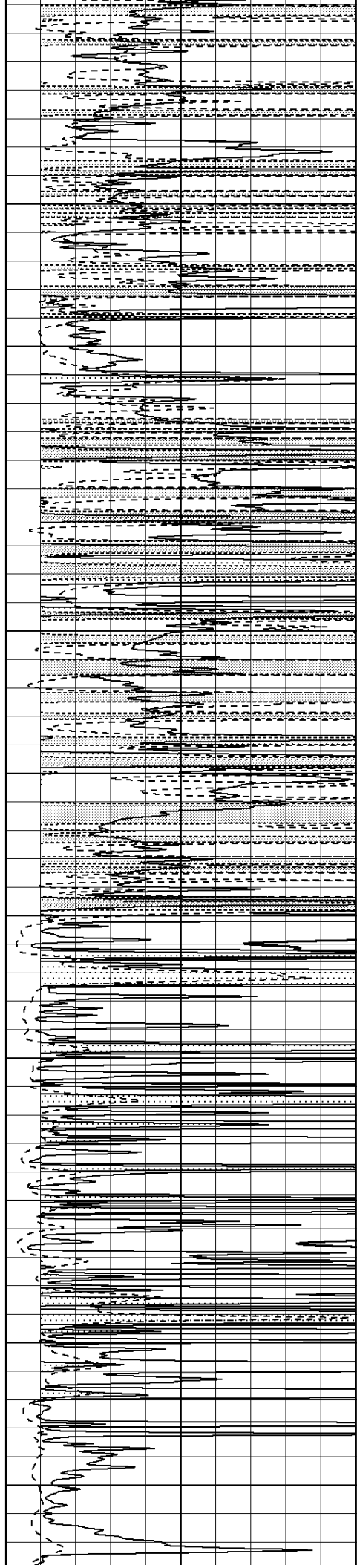
2400

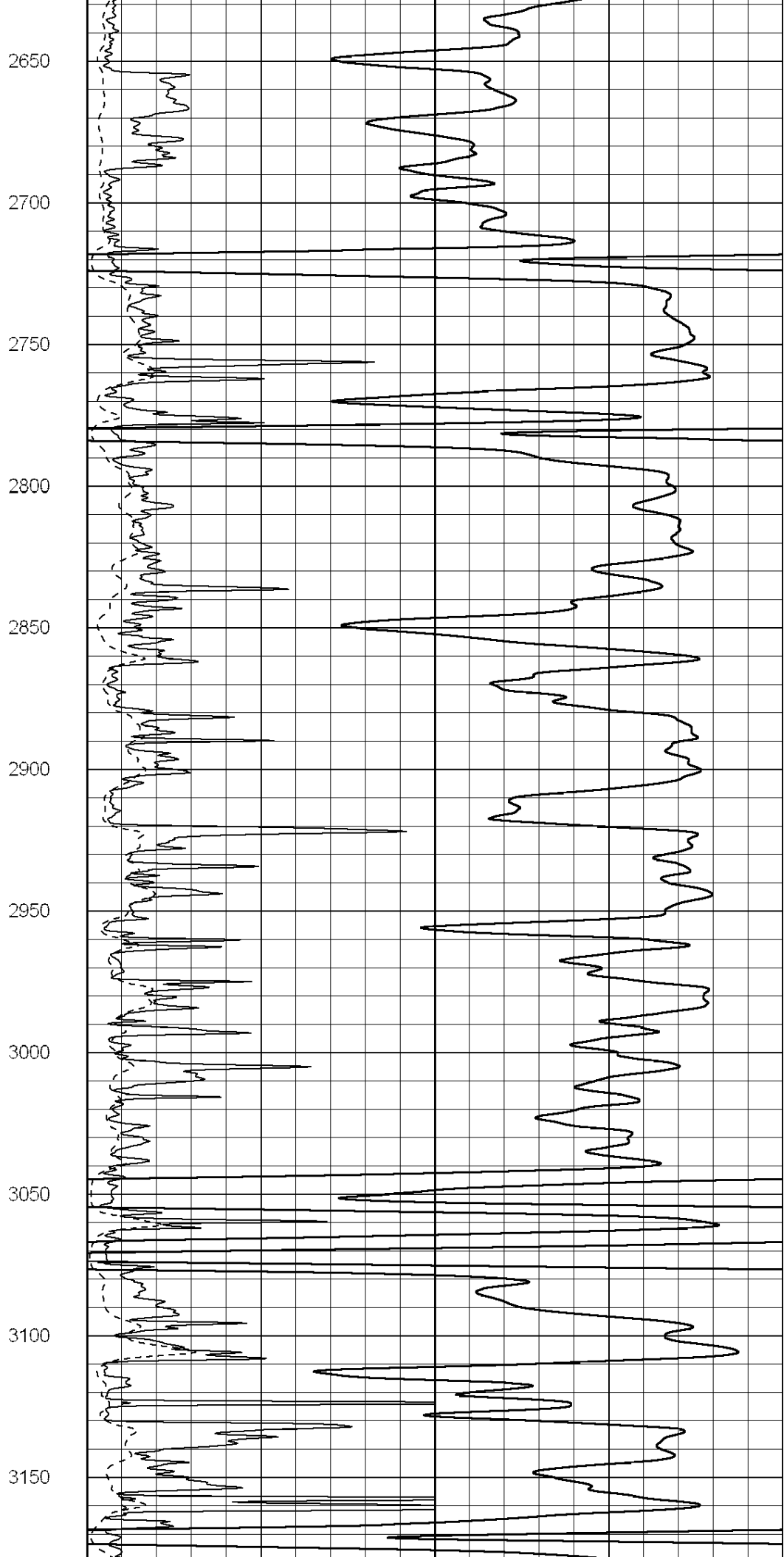
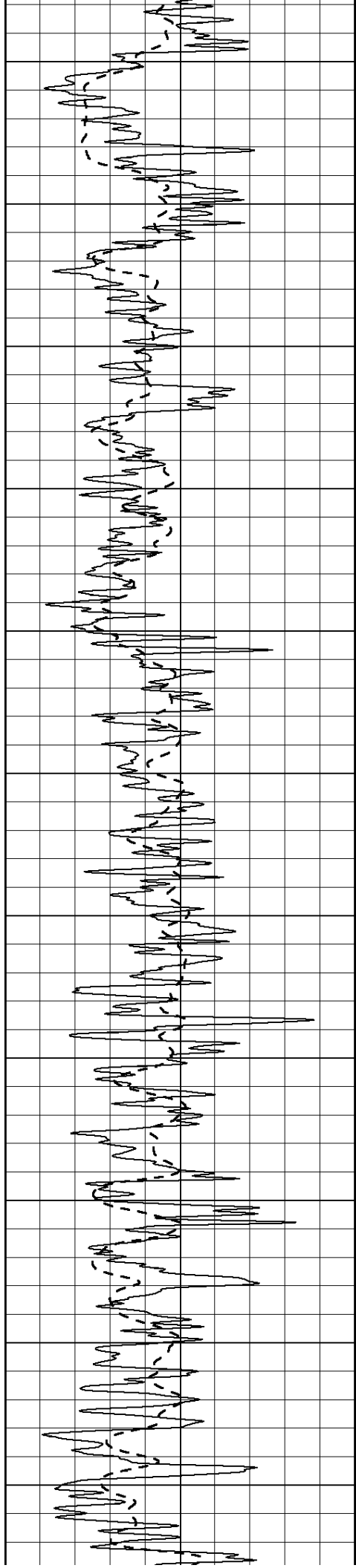
2450

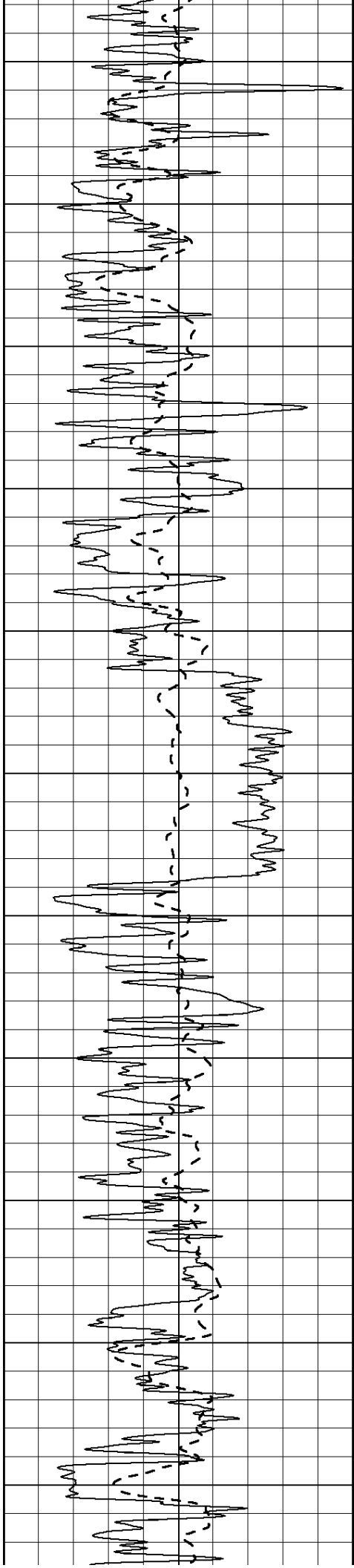
2500

2550

2600







3200

3250

3300

3350

3400

3450

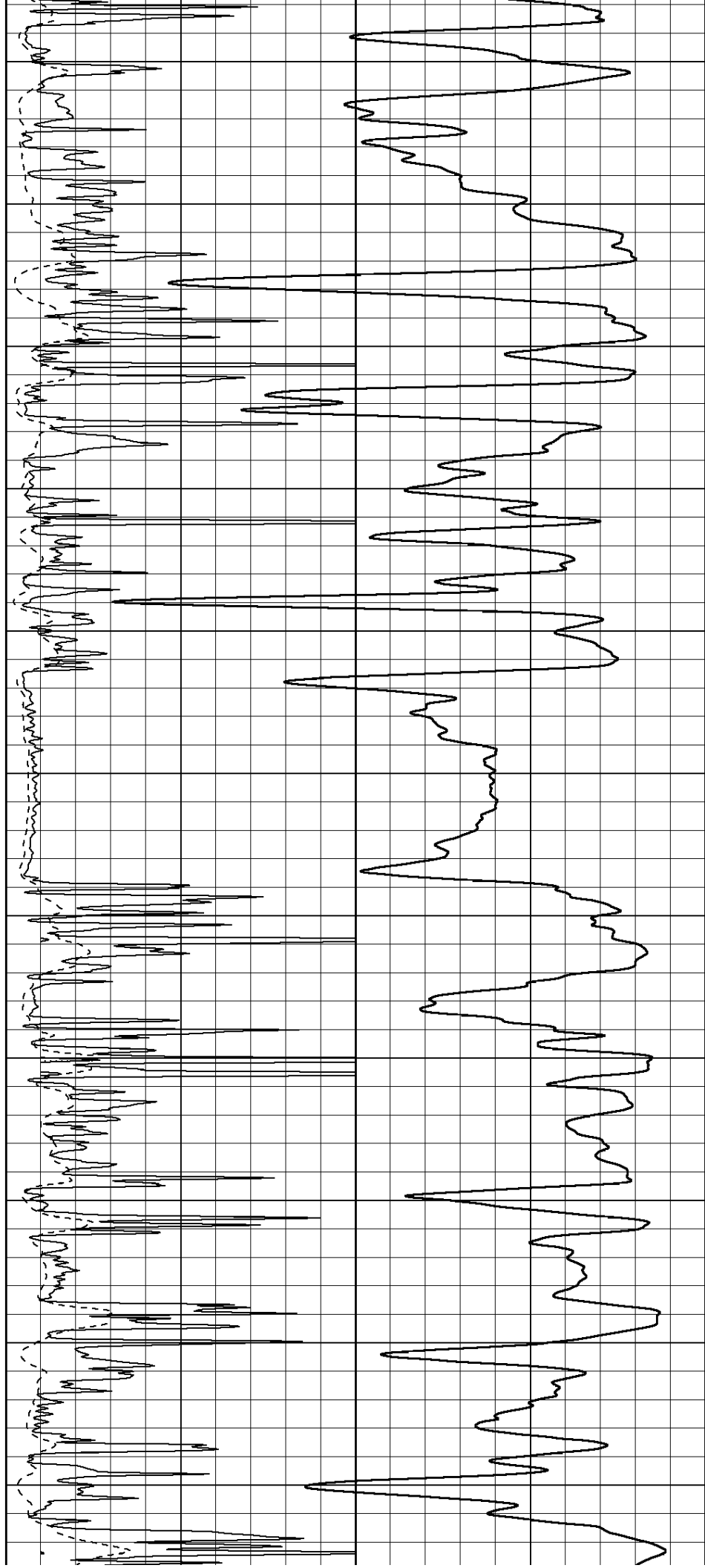
3500

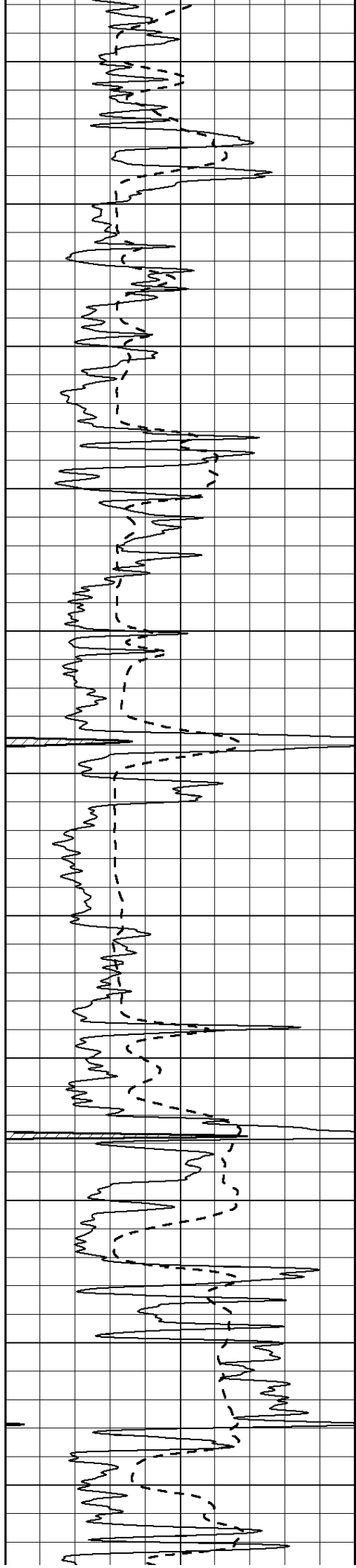
3550

3600

3650

3700





3750

3800

3850

3900

3950

4000

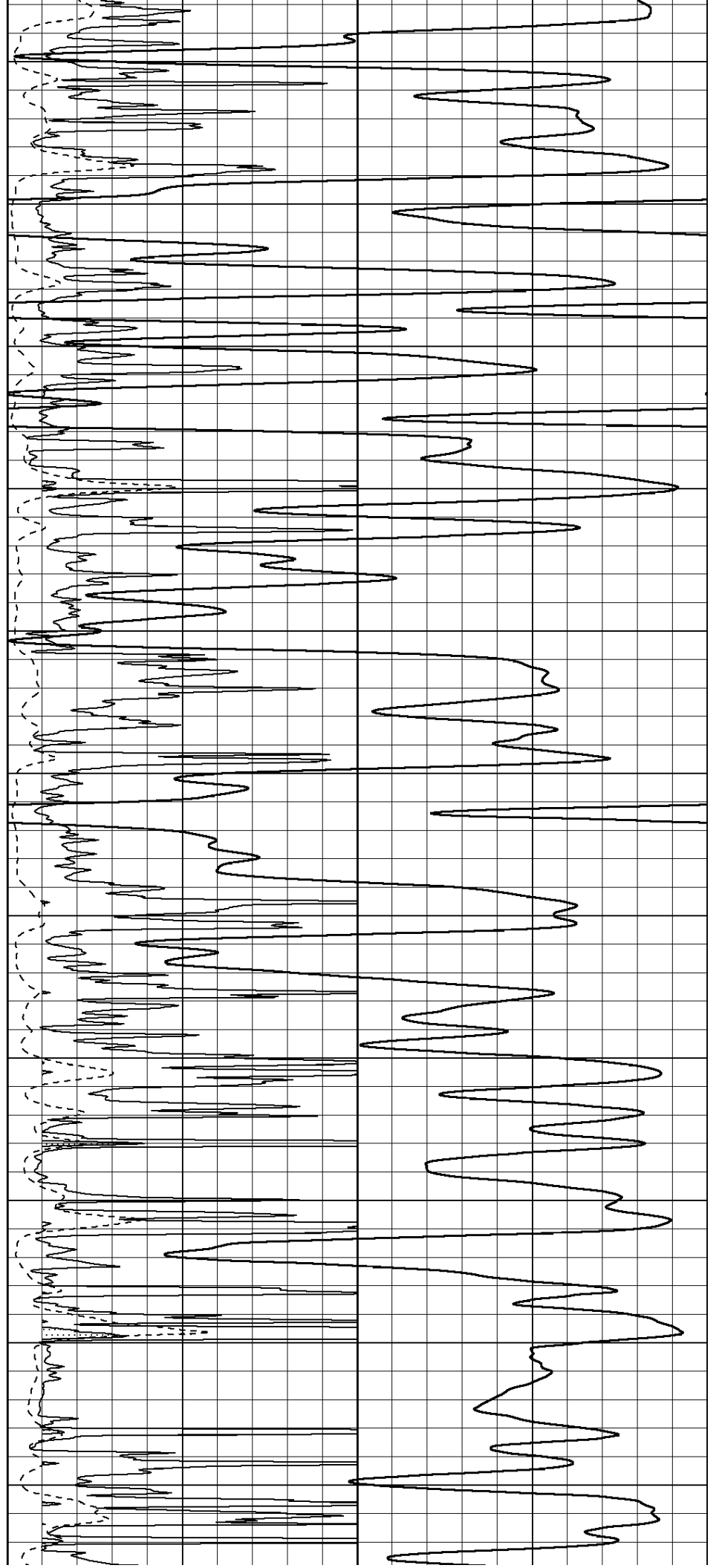
4050

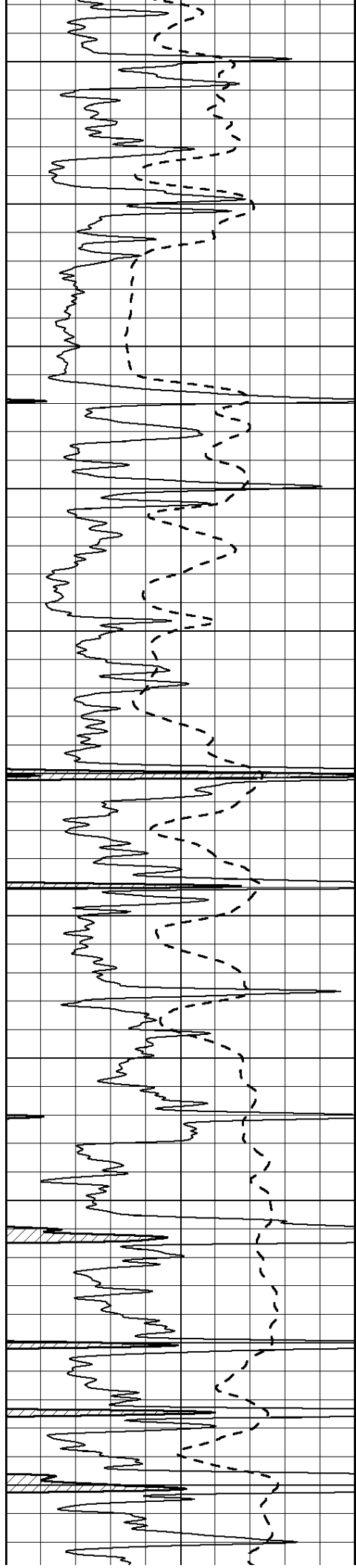
4100

4150

4200

4250





4300

4350

4400

4450

4500

4550

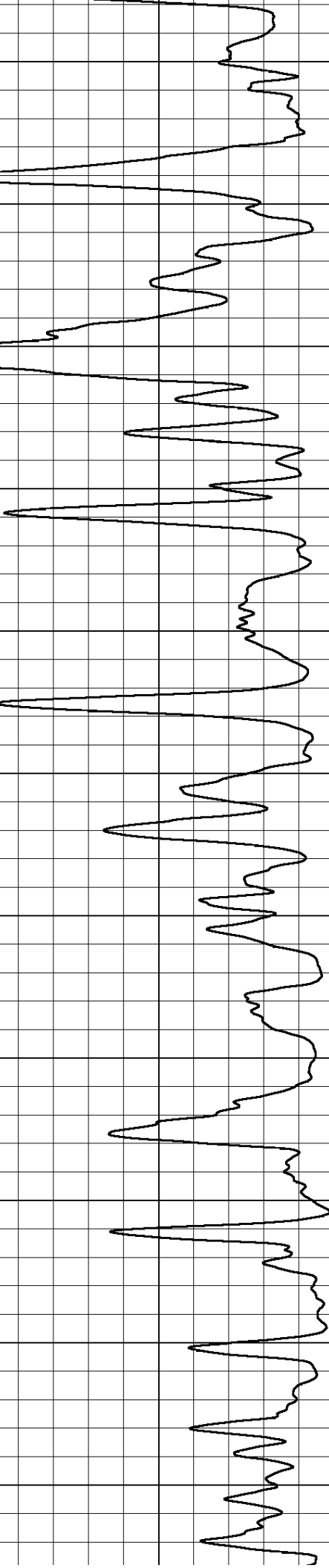
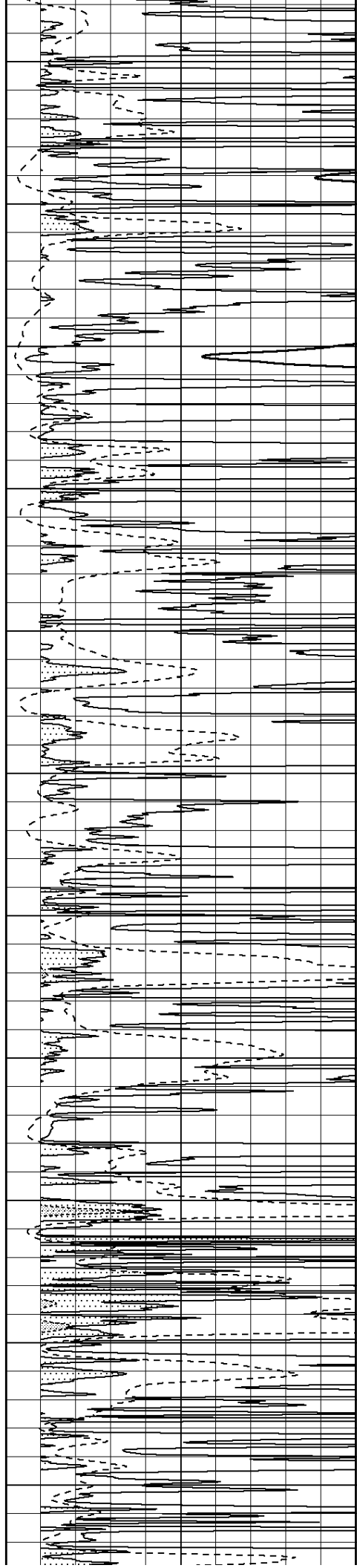
4600

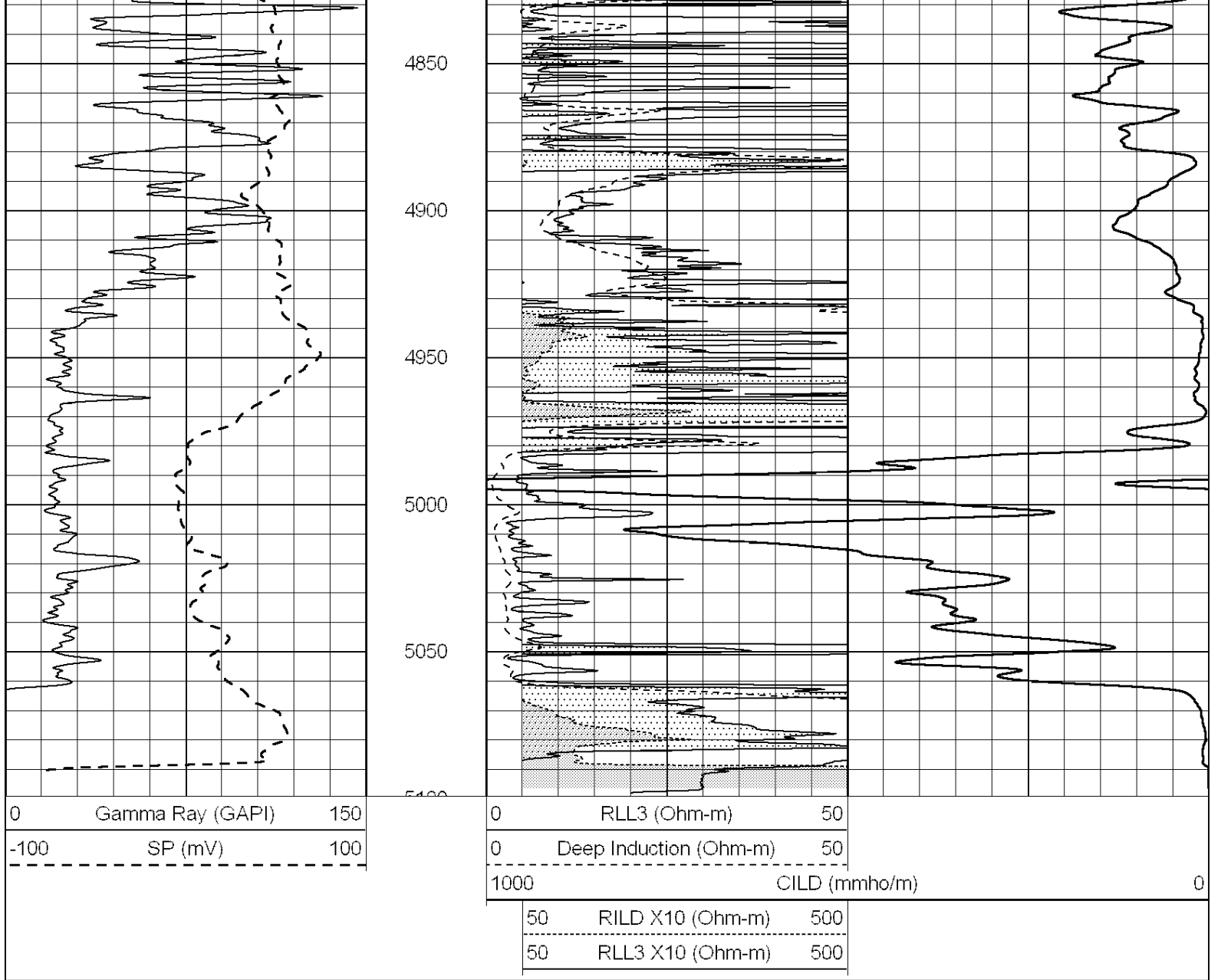
4650

4700

4750

4800



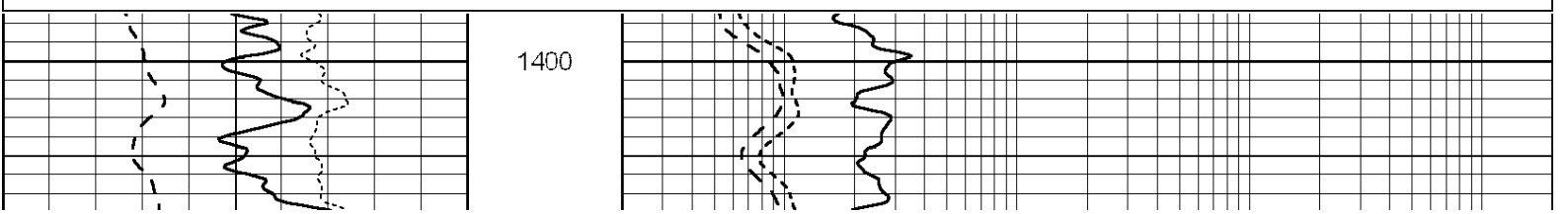


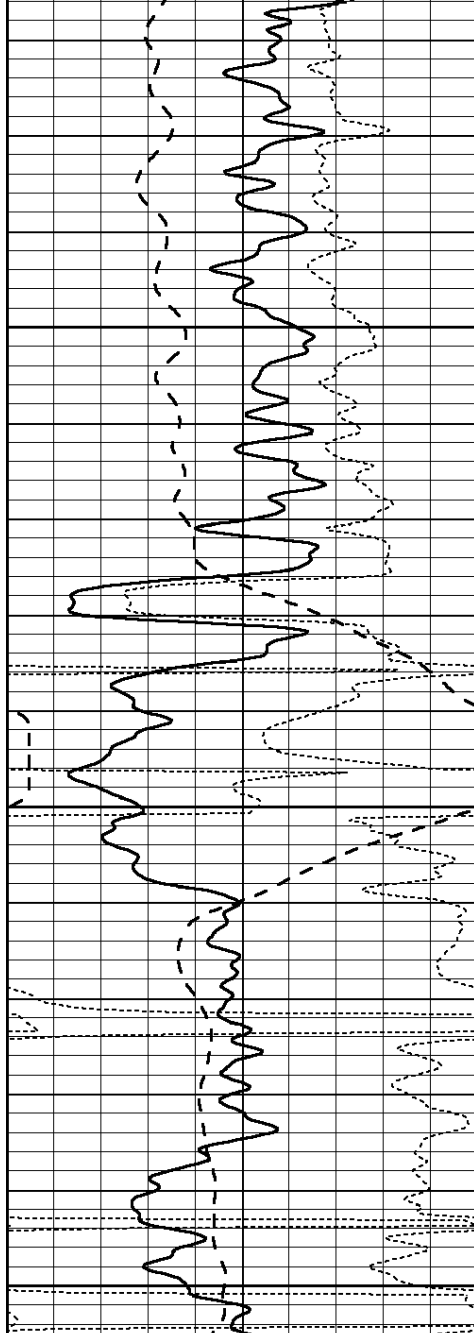
**COMPLETION
& PRODUCTION
SERVICES CO.**

MAIN SECTION

Database File: 40-009992ddn.db
 Dataset Pathname: pass3.2
 Presentation Format: _dil
 Dataset Creation: Thu Nov 01 23:34:39 2012 by Calc Open-Cased 090629
 Charted by: Depth in Feet scaled 1:240

0	GAMMA RAY (GAPI)	150	0.2	SHALLOW GUARD (Ohm-m)	2000
-100	SP (mV)	100	0.2	MEDIUM INDUCTION (Ohm-m)	2000
-250	Rxo/Rt	50	0.2	DEEP INDUCTION (Ohm-m)	2000



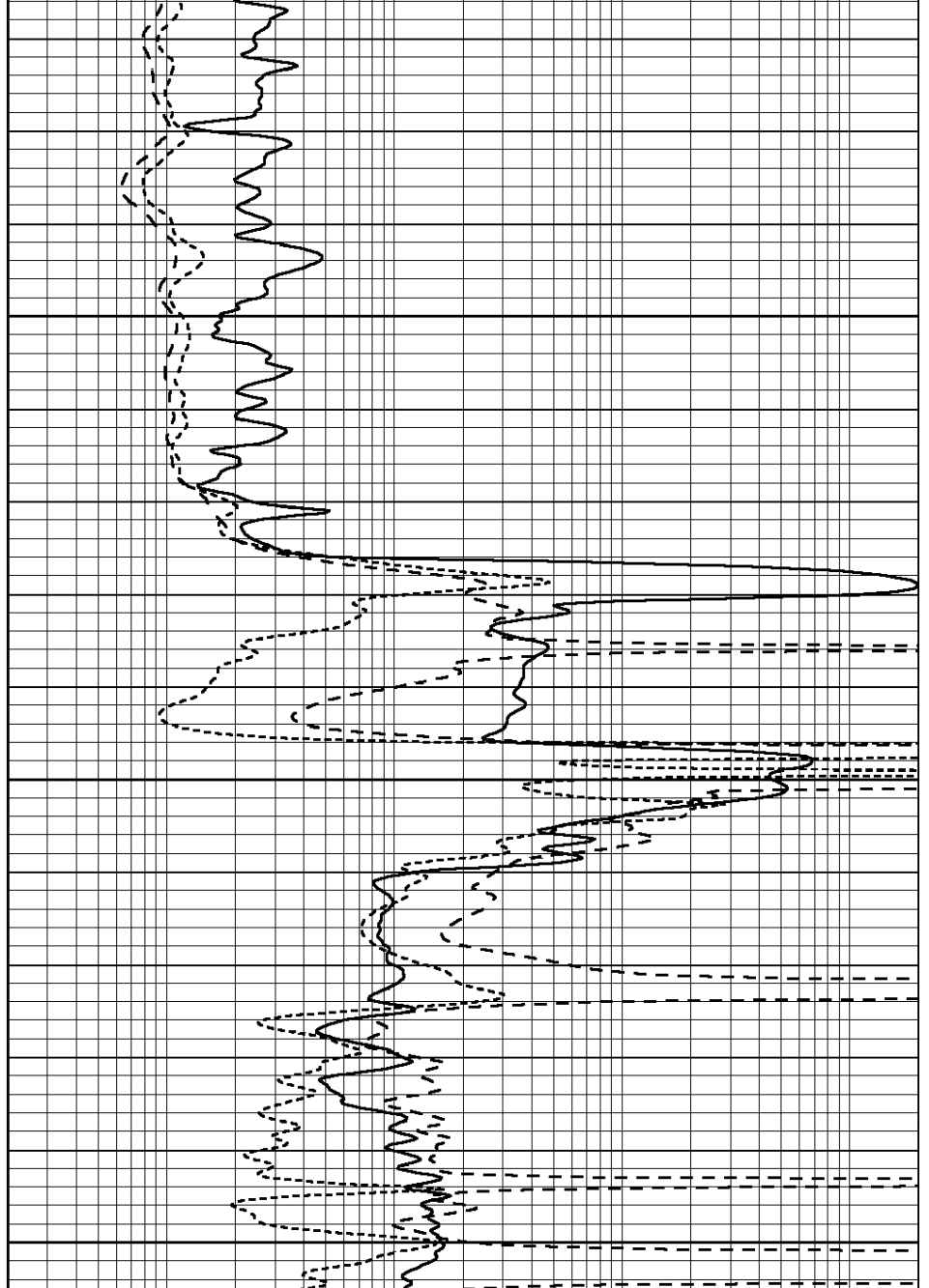


1450

1500

1550

0	GAMMA RAY (GAPI)	150
-100	SP (mV)	100
-250	Rxo/Rt	50



0.2	SHALLOW GUARD (Ohm-m)	2000
0.2	MEDIUM INDUCTION (Ohm-m)	2000
0.2	DEEP INDUCTION (Ohm-m)	2000

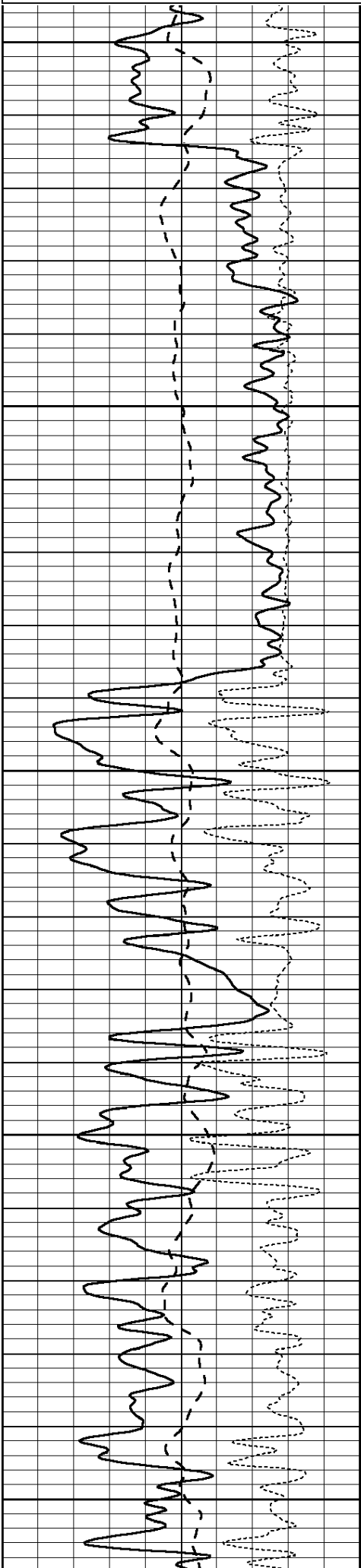


MAIN SECTION

Database File: 40-009992ddn.db
 Dataset Pathname: pass3.2
 Presentation Format: _dil
 Dataset Creation: Thu Nov 01 23:34:39 2012 by Calc Open-Cased 090629
 Charted by: Depth in Feet scaled 1:240

0	GAMMA RAY (GAPI)	150
-100	SP (mV)	100
-250	Rxo/Rt	50

0.2	SHALLOW GUARD (Ohm-m)	2000
0.2	MEDIUM INDUCTION (Ohm-m)	2000
0.2	DEEP INDUCTION (Ohm-m)	2000



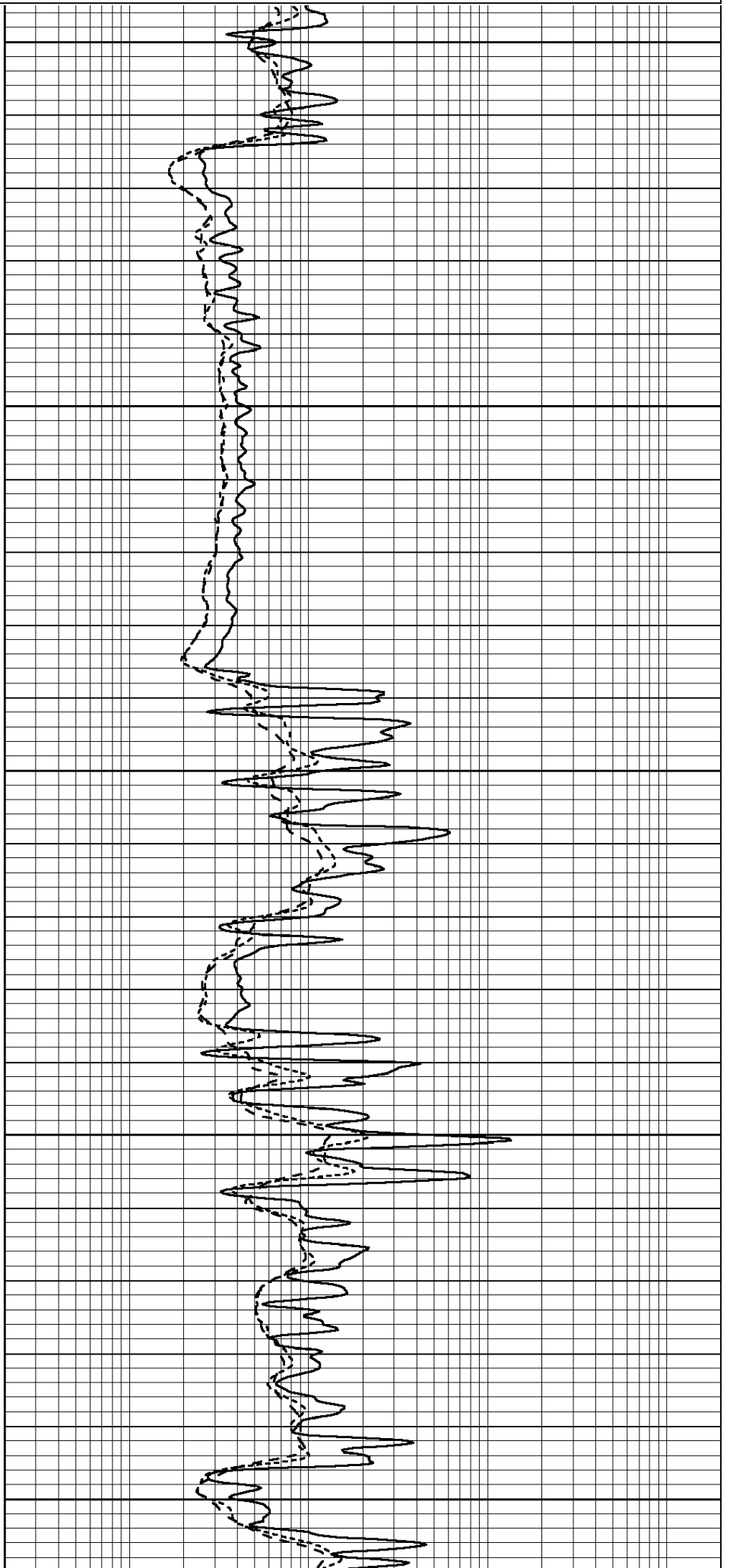
3400

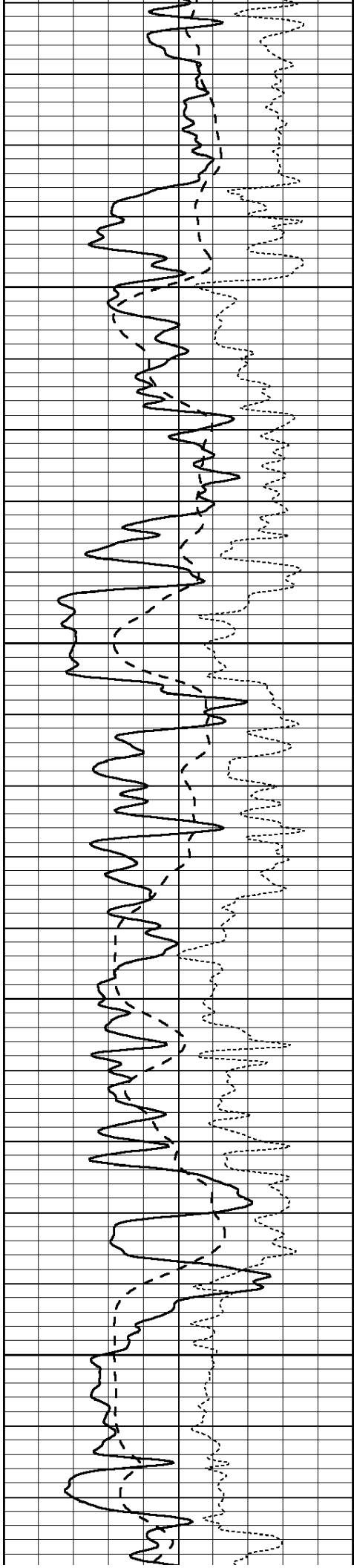
3450

3500

3550

3600



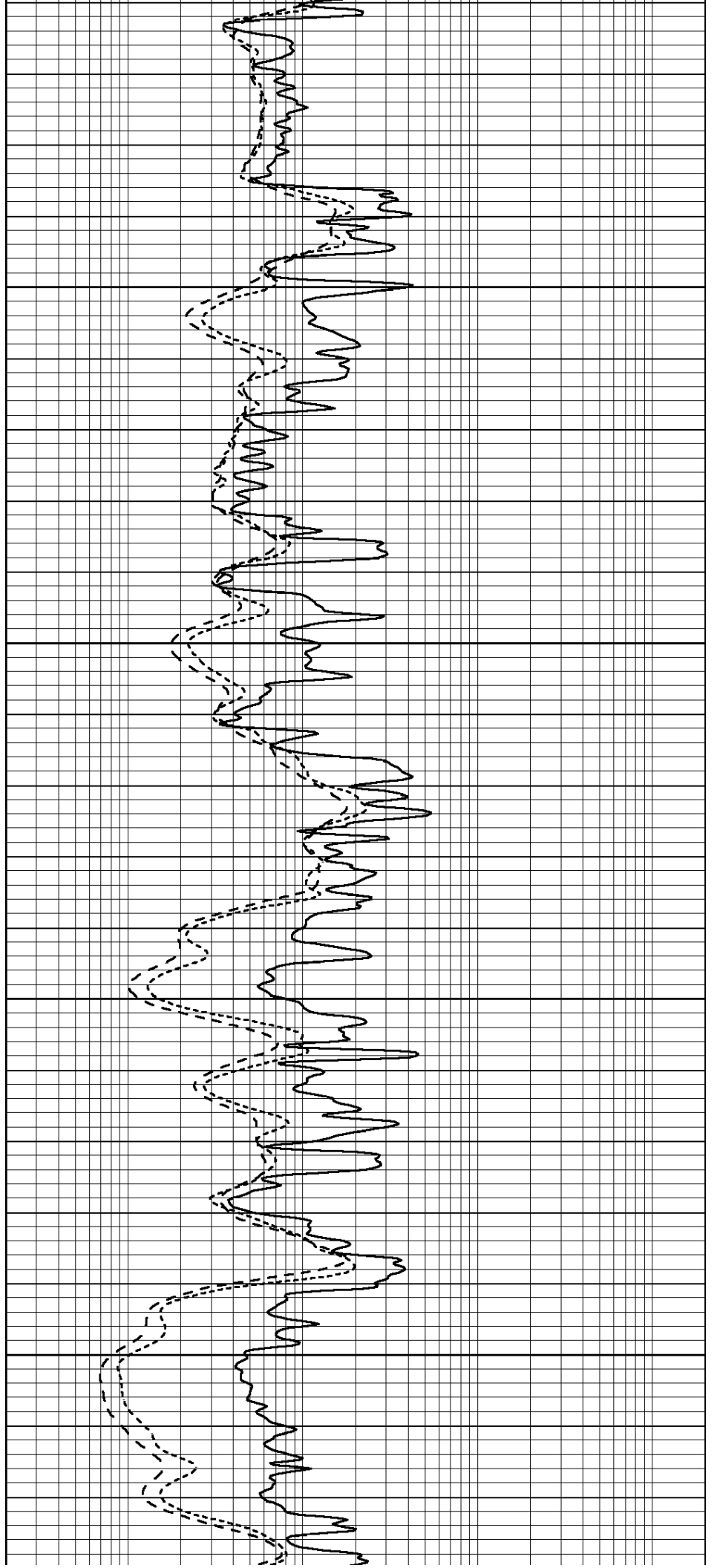


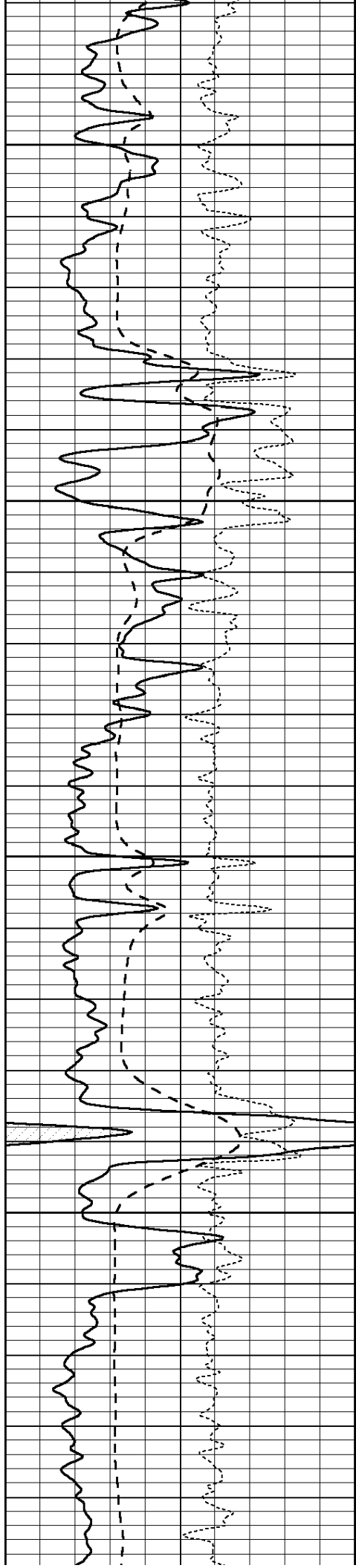
3650

3700

3750

3800





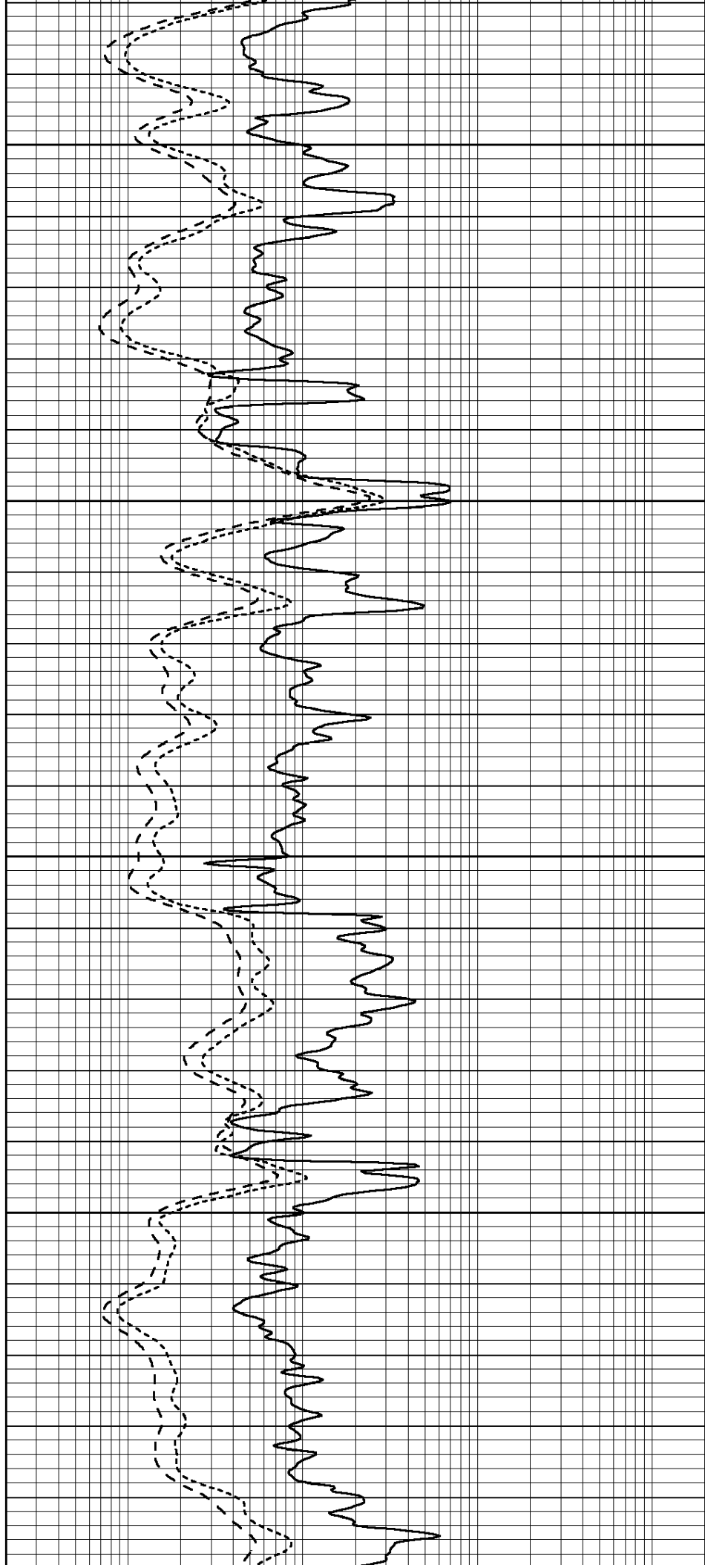
3850

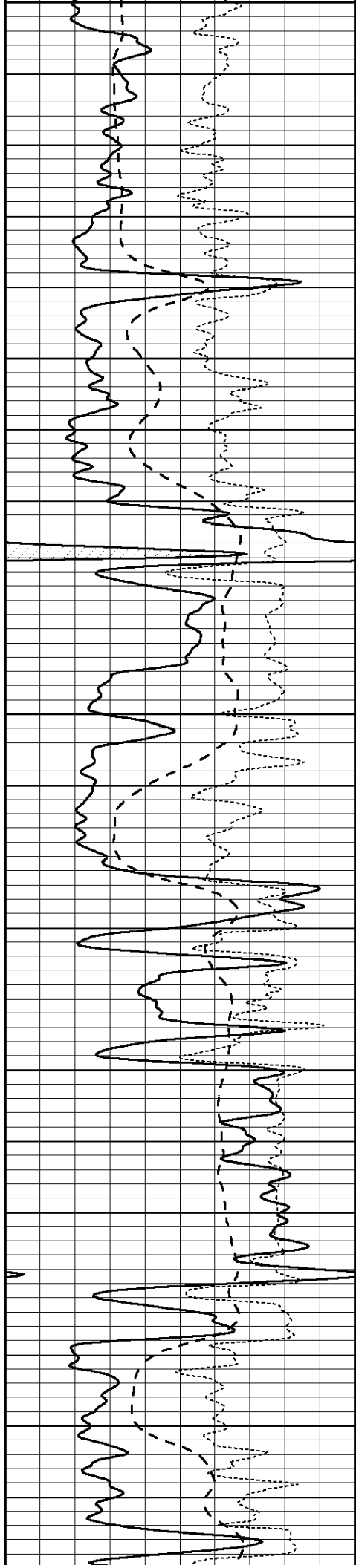
3900

3950

4000

4050





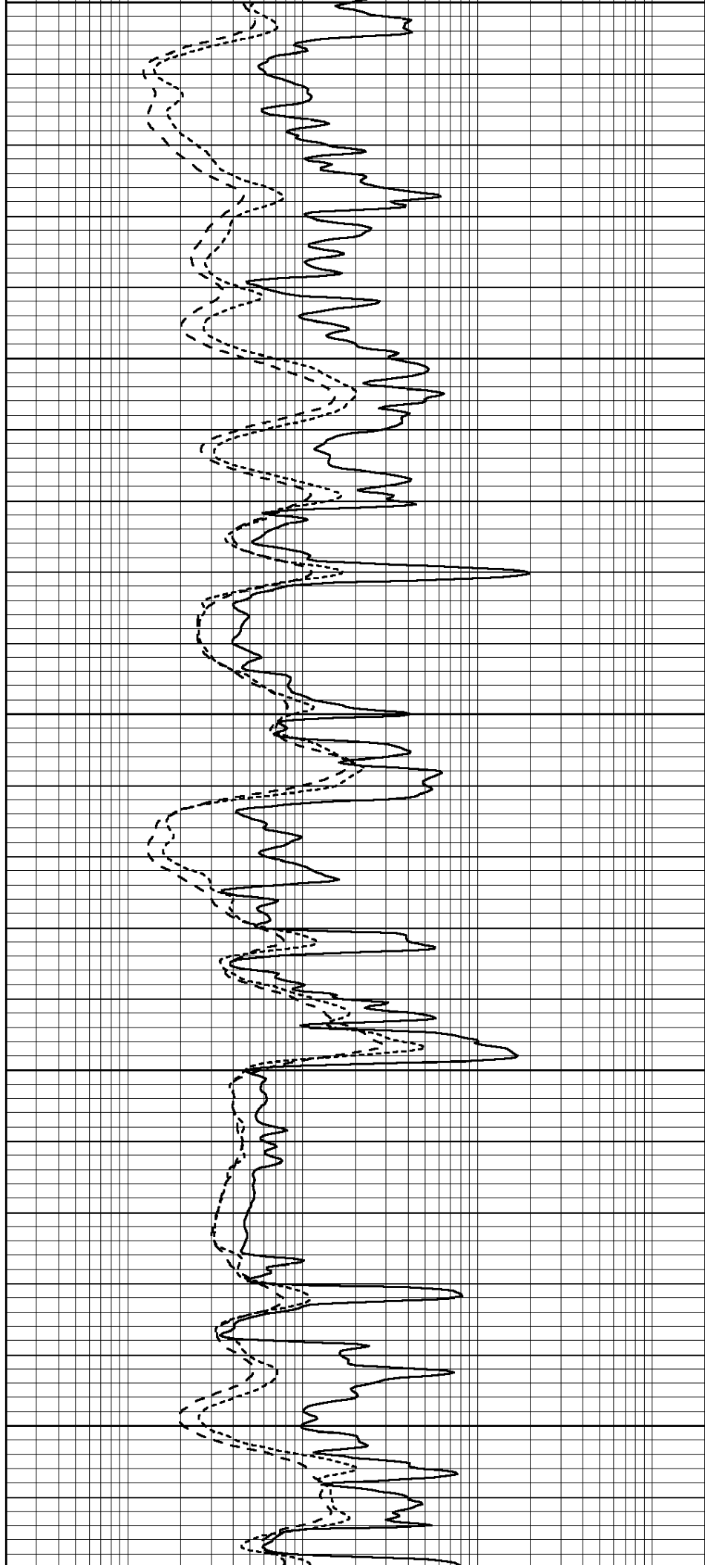
4050

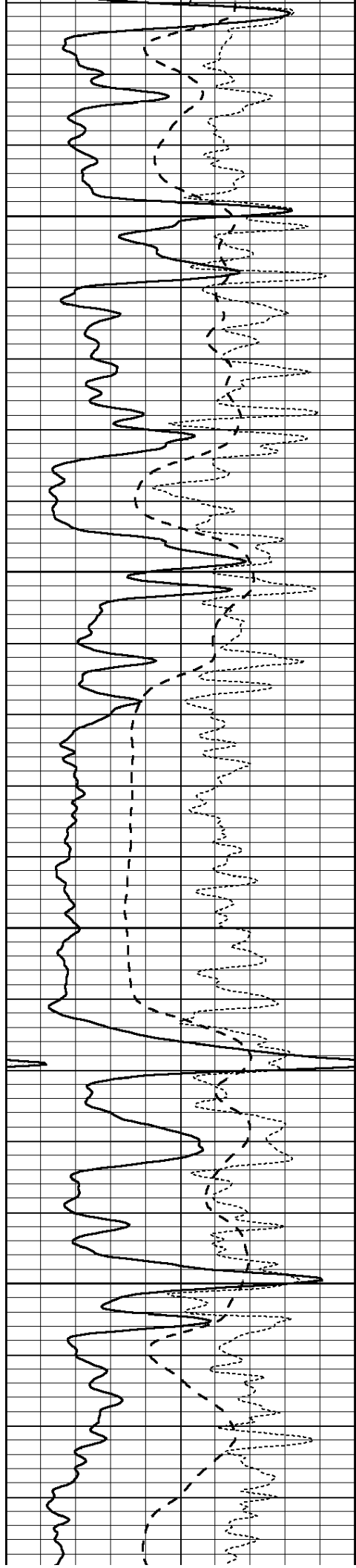
4100

4150

4200

4250



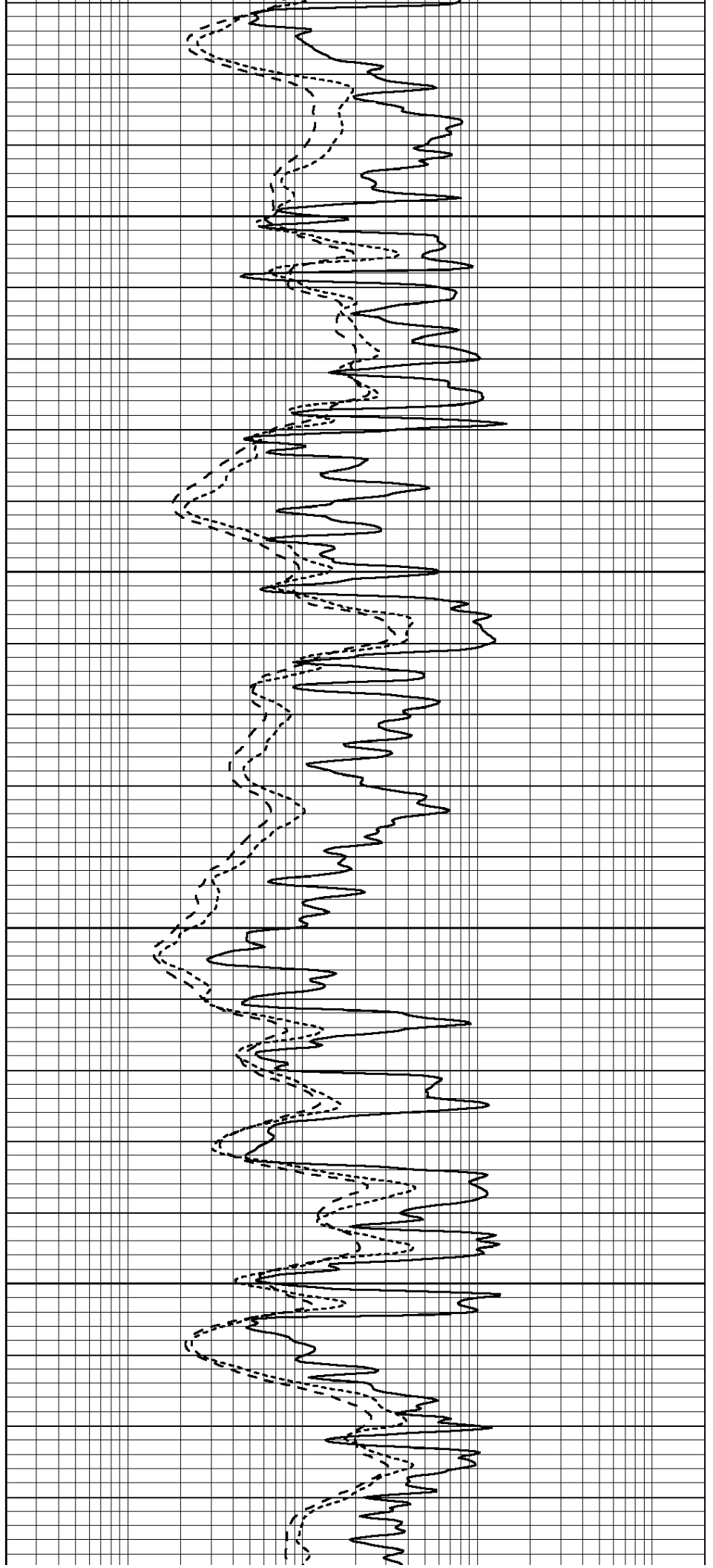


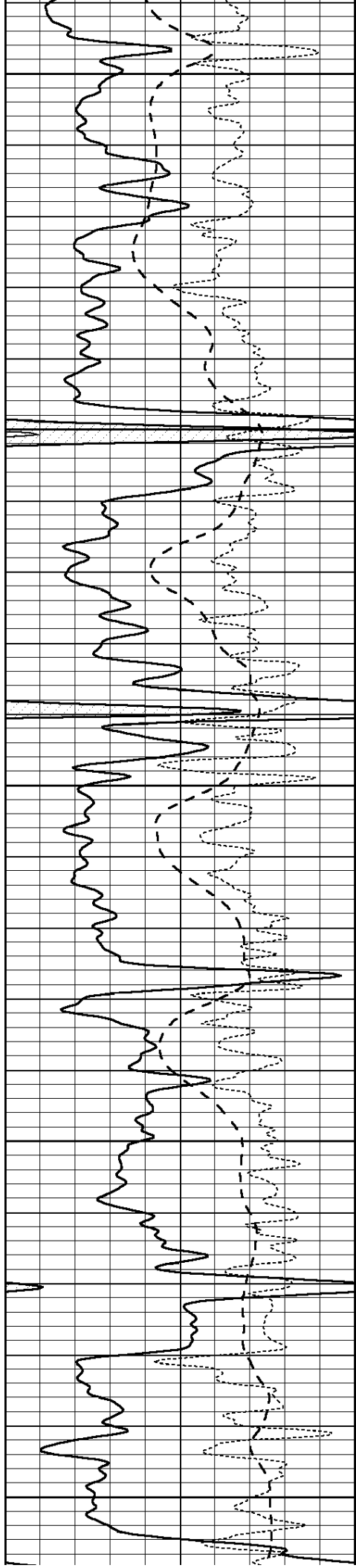
4300

4350

4400

4450





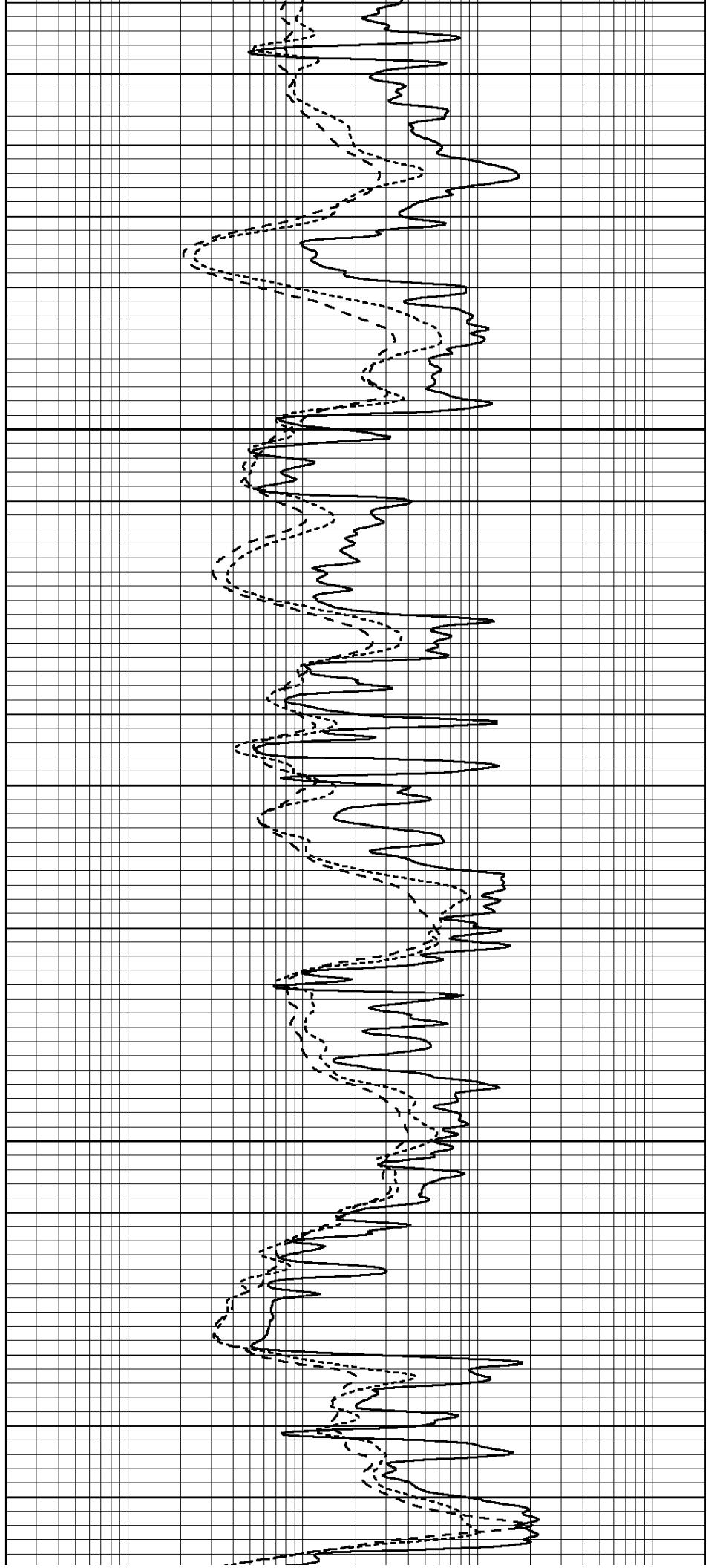
4500

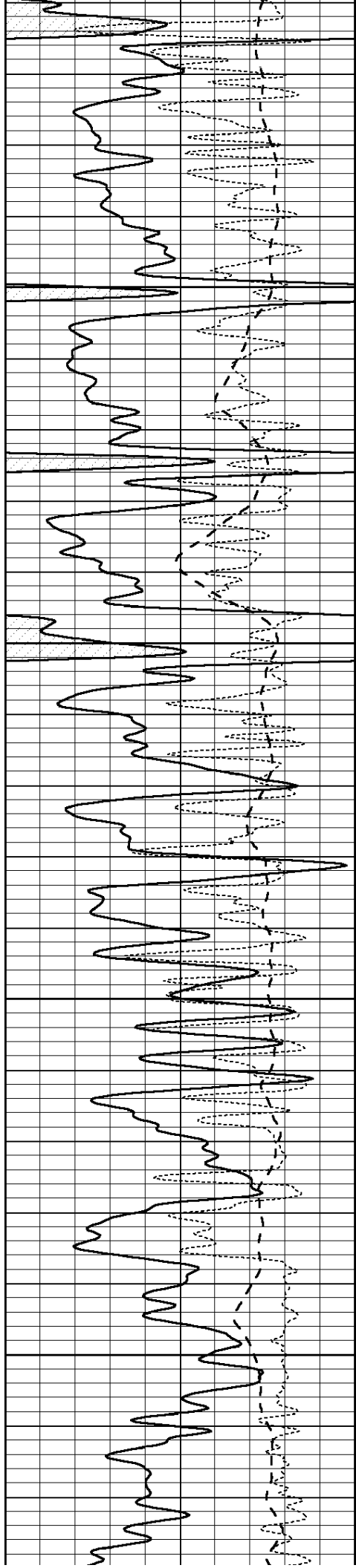
4550

4600

4650

4700



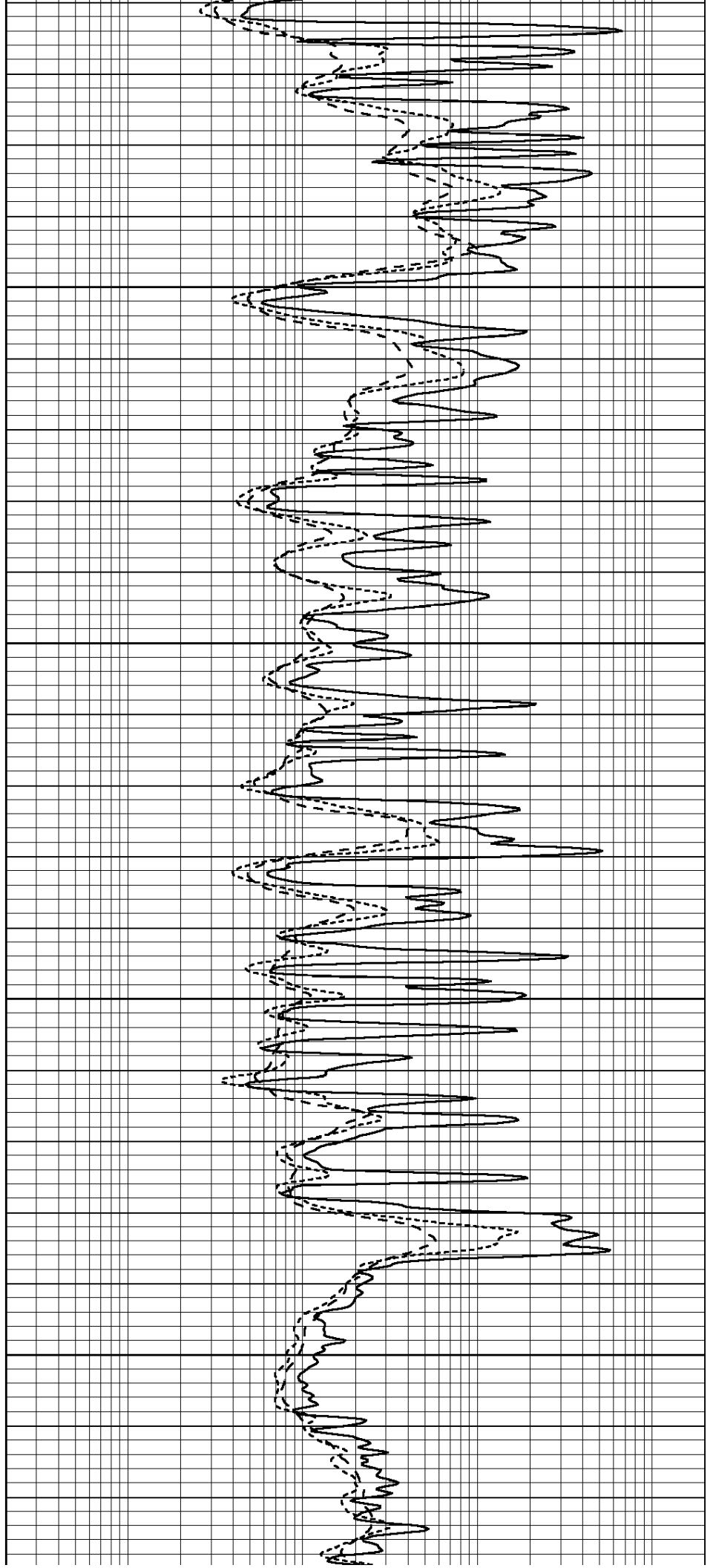


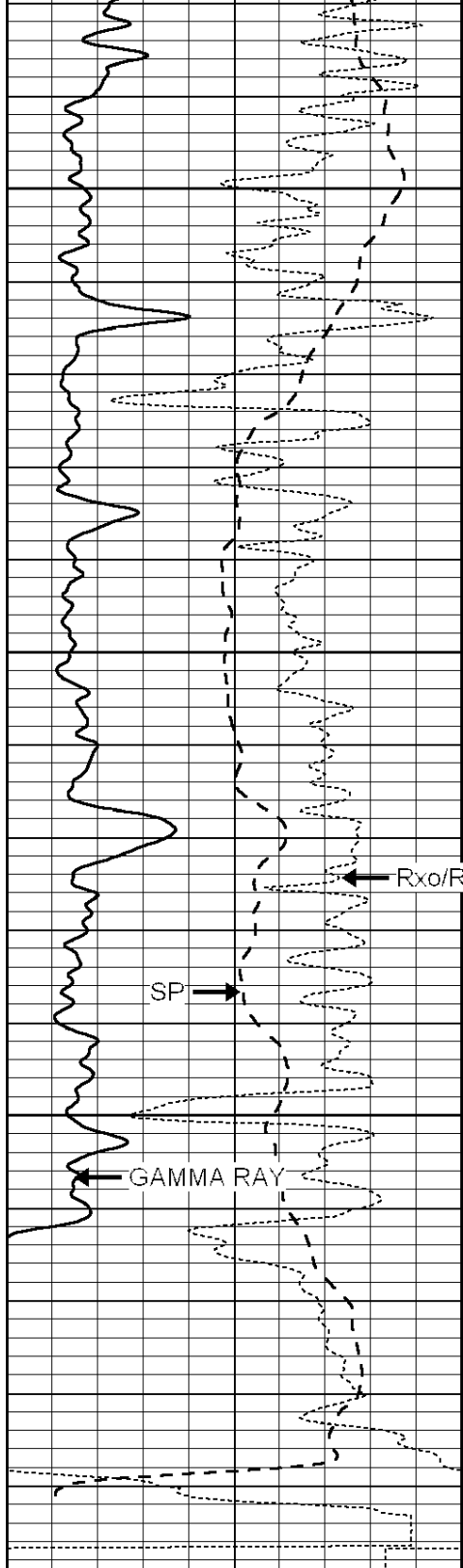
4750

4800

4850

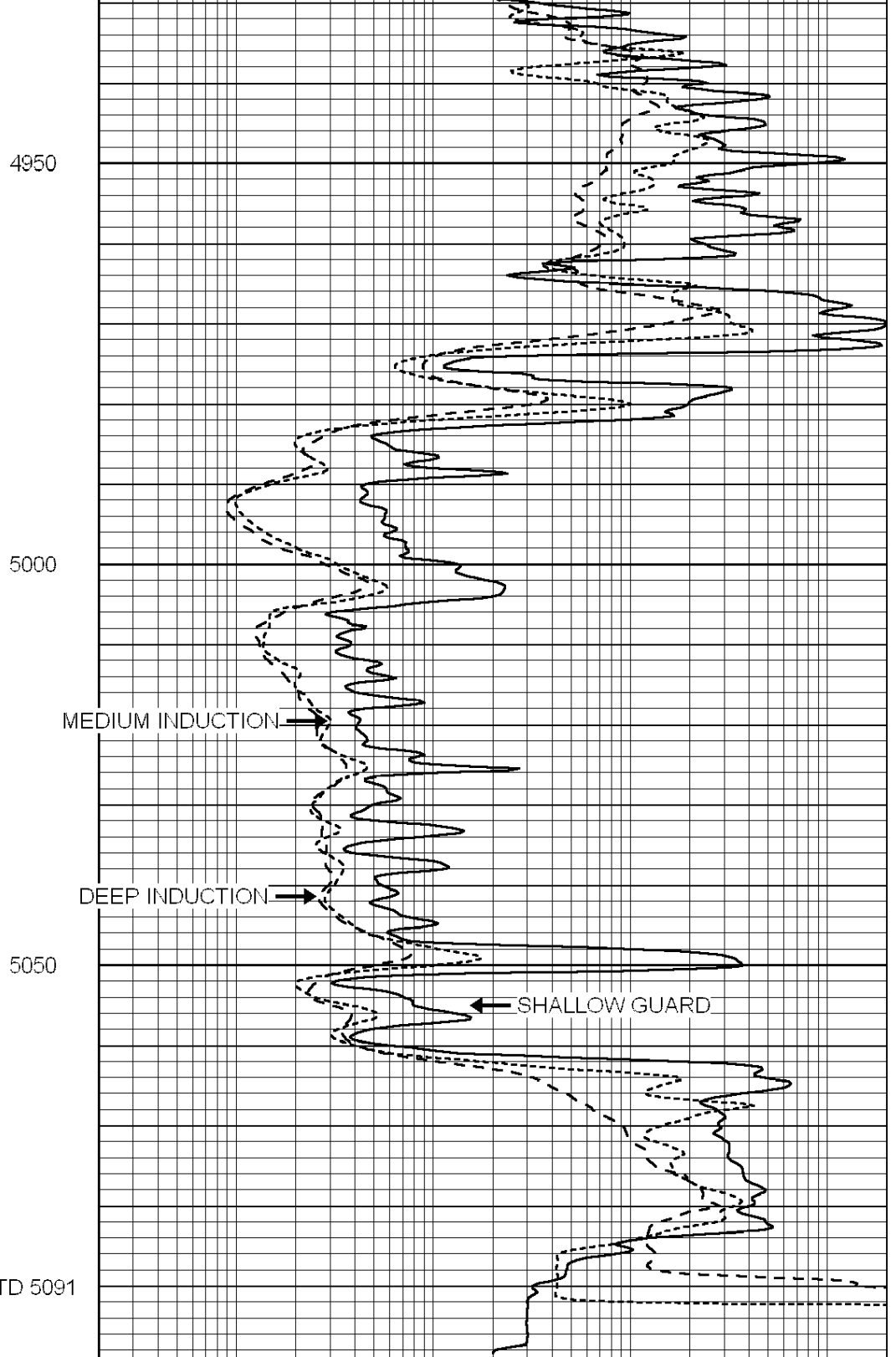
4900





LTD 5091

0	GAMMA RAY (GAPI)	150
-100	SP (mV)	100
-250	Rxo/Rt	50



0.2	SHALLOW GUARD (Ohm-m)	2000
0.2	MEDIUM INDUCTION (Ohm-m)	2000
0.2	DEEP INDUCTION (Ohm-m)	2000

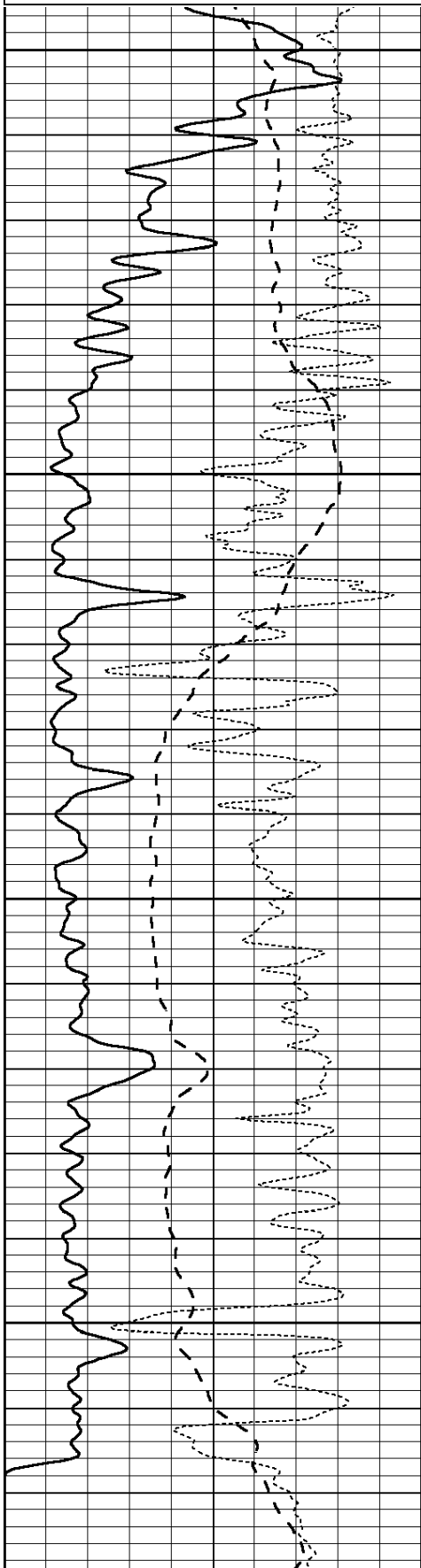


REPEAT SECTION

Dataset Pathname: pass2.2
 Presentation Format: _dil
 Dataset Creation: Thu Nov 01 23:42:38 2012 by Calc Open-Cased 090629
 Charted by: Depth in Feet scaled 1:240

0	GAMMA RAY (GAPI)	150
-100	SP (mV)	100
-250	Rxo/Rt	50

0.2	SHALLOW GUARD (Ohm-m)	2000
0.2	MEDIUM INDUCTION (Ohm-m)	2000
0.2	DEEP INDUCTION (Ohm-m)	2000

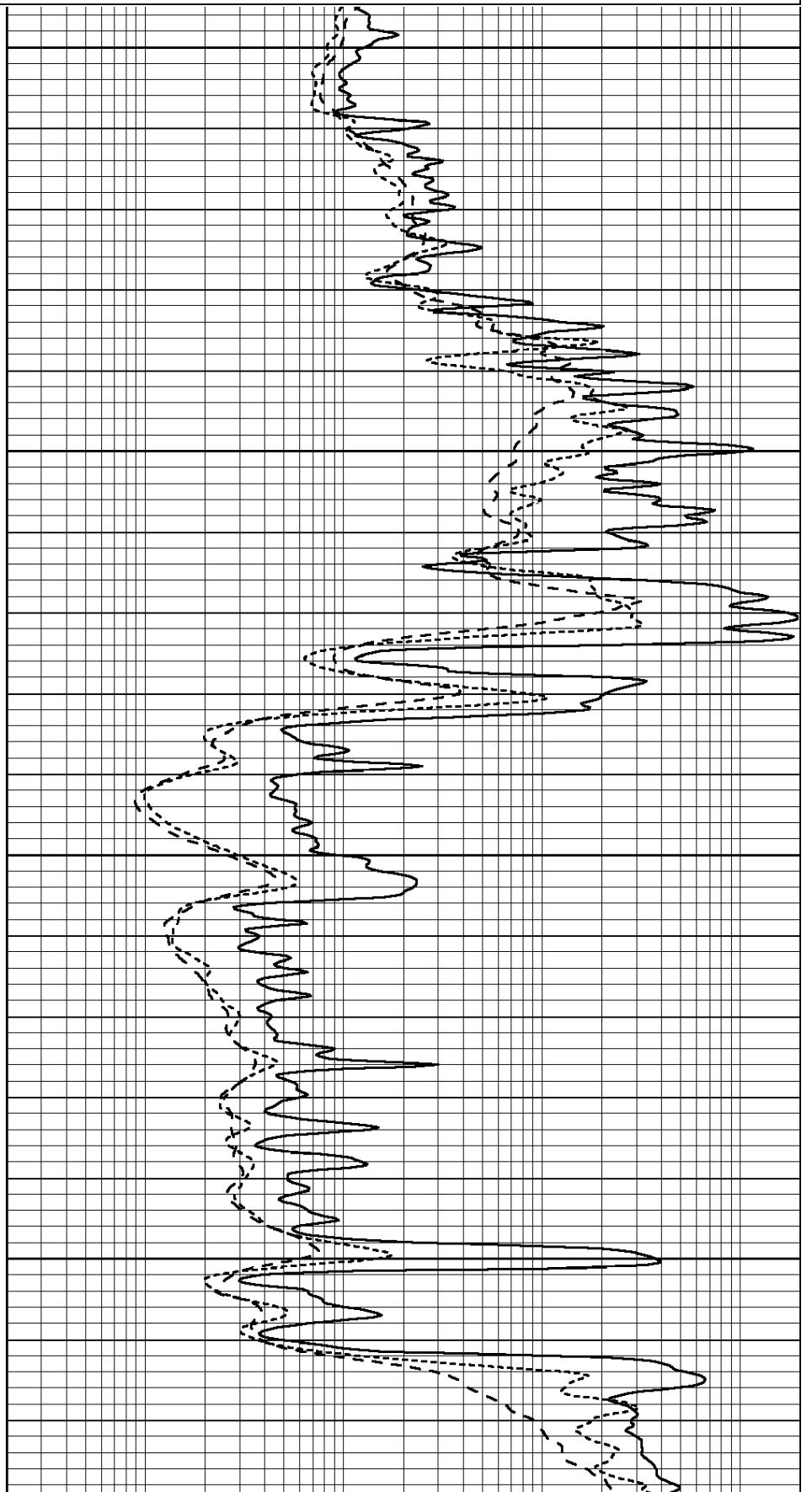


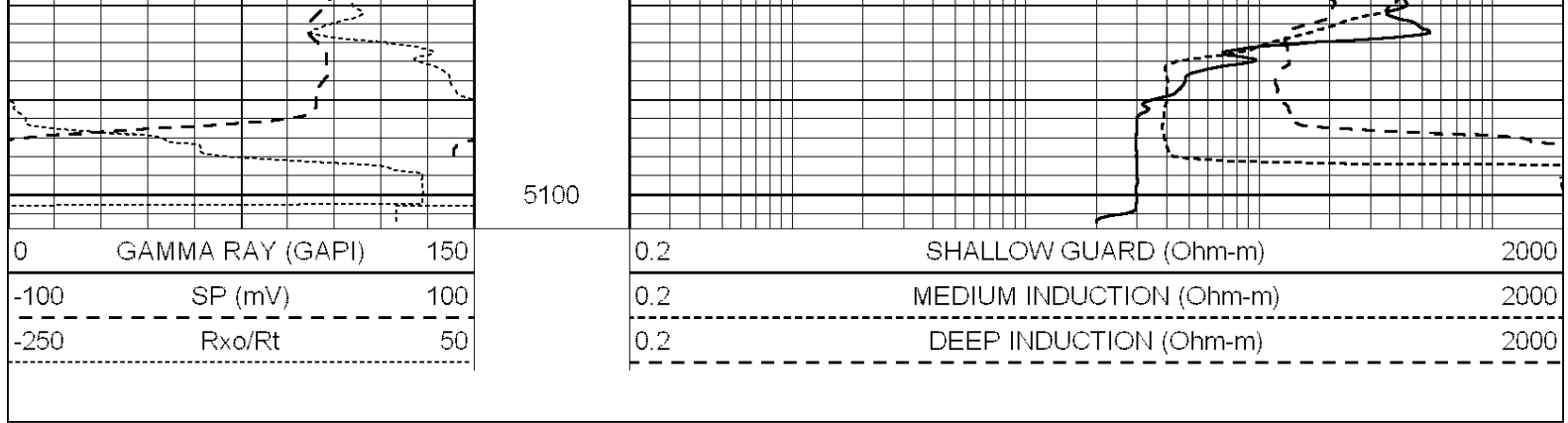
4900

4950

5000

5050





Calibration Report

Database File: 40-009992ddn.db
 Dataset Pathname: pass3.2
 Dataset Creation: Thu Nov 01 23:34:39 2012 by Calc Open-Cased 090629

Dual Induction Calibration Report

Serial-Model: PROBE8-DILG
 Surface Cal Performed: Fri Aug 01 06:33:19 2008
 Downhole Cal Performed: Mon Jul 28 11:08:27 2008
 After Survey Verification Performed: Mon Jul 28 11:08:27 2008

Surface Calibration

Loop:	Readings				References			Results	
	Air	Loop			Air	Loop		m	b
Deep	0.015	0.648	V	0.000	400.000	mmho/m	632.616	-9.730	
Medium	0.029	0.796	V	0.000	464.000	mmho/m	605.049	-19.680	
Internal:	Zero	Cal		Zero	Cal		m	b	
Deep	0.017	0.657	V	0.000	400.000	mmho/m	625.153	-10.619	
Medium	0.016	0.757	V	0.000	464.000	mmho/m	625.992	-9.739	

Downhole Calibration

	Readings				References			Results	
	Zero	Cal			Zero	Cal		m'	b'
Deep	0.000	0.000	mmho/m	2.011	405.777	mmho/m	1.000	0.000	
Medium	0.000	0.000	mmho/m	7.590	503.393	mmho/m	1.000	0.000	
LL3		7.500	V		1500.000	Ohm-m			
		0.000	V		20.000	Ohm-m			
		-7.200	V		3800.000	mmho-m			

After Survey Verification

	Readings				Targets			Results	
	Zero	Cal			Zero	Cal		m'	b'
Deep	0.000	0.000	mmho/m	0.000	0.000	mmho/m	0.000	0.000	
Medium	0.000	0.000	mmho/m	0.000	0.000	mmho/m	0.000	0.000	
LL3		1.000	Ohm-m		1.000	Ohm-m			
		0.000	Ohm-m		0.000	Ohm-m			
		1.000	mmho-m		1.000	mmho-m			

Compensated Density Calibration Report

Serial-Model: GEAR4-GEARHART
 Source / Verifier: 143 / 143
 Master Calibration Performed: Mon Mar 19 19:07:19 2012

Master Calibration

	Density		Far Detector	Near Detector	
Magnesium	1.710	g/cc	1015.91	497.51	cps
Aluminum	2.600	g/cc	227.67	350.20	cps
Spine Angle = 76.79			Density/Spine Ratio = 0.579		
	Size		Reading		
Small Ring	8.00	in	3.21	V	
Large Ring	14.00	in	5.46	V	

Compensated Neutron Calibration Report

Serial Number: 6I
 Tool Model: G

CALIBRATION

Detector	Readings		Target		Normalization
Short Space	1.00	cps	1.00	cps	1.0000
Long Space	1.00	cps	1.00	cps	1.0000

Gamma Ray Calibration Report

Serial Number: #8
 Tool Model: OPEN
 Performed: Mon Jun 13 16:56:43 2011

Calibrator Value: 150.0 GAPI

Background Reading: 0.0 cps
 Calibrator Reading: 175.0 cps

Sensitivity: 0.8371 GAPI/cps