



**COMPLETION
& PRODUCTION
SERVICES CO.**

**COMPENSATED
DENSITY/NEUTRON
LOG**

Company RITCHIE EXPLORATION, INC
Well NAU 25C 1
Field WILDCAT
County FORD
State KANSAS

Company RITCHIE EXPLORATION, INC
Well NAU 25C 1
Field WILDCAT
County FORD State KANSAS

Location: API # : 15-057-20848-00-00
SW - NE - SW
1798' FSL & 1538' FWL
SEC 25 TWP 26S RGE 23W
Permanent Datum GROUND LEVEL Elevation 2418
Log Measured From KELLY BUSHING 12' A.G.L.
Drilling Measured From KELLY BUSHING
Other Services
DIL
MEL/SON
Elevation
K.B. 2430
D.F. 2428
G.L. 2418

Date	11/01/2012
Run Number	ONE
Depth Driller	5090
Depth Logger	5091
Bottom Logged Interval	5076
Top Log Interval	3400
Casing Driller	8 5/8" @ 372
Casing Logger	369
Bit Size	7 7/8
Type Fluid in Hole	CHEMICAL MUD
Density / Viscosity	9.2/55
pH / Fluid Loss	10.5/11.6
Source of Sample	FLOWLINE
Rim @ Meas. Temp	.6@86F
Rmf @ Meas. Temp	.474@86F
Rmc @ Meas. Temp	.72@86
Source of Rmf / Rmc	MEASURED
Rim @ BHT	.403@128F
Time Circulation Stopped	2 HOURS
Time Logger on Bottom	9:45 P.M.
Maximum Recorded Temperature	128
Equipment Number	680
Location	HAYS, KS.
Recorded By	MIKE GARRISON
Witnessed By	ADAM ELDANI

<<< Fold Here >>>

All interpretations are opinions based on inferences from electrical or other measurements and we cannot and do not guarantee the accuracy or correctness of any interpretation, and we shall not, except in the case of gross or willful negligence on our part, be liable or responsible for any loss, costs, damages, or expenses incurred or sustained by anyone resulting from any interpretation made by any of our officers, agents or employees. These interpretations are also subject to our general terms and conditions set out in our current Price Schedule.

Comments

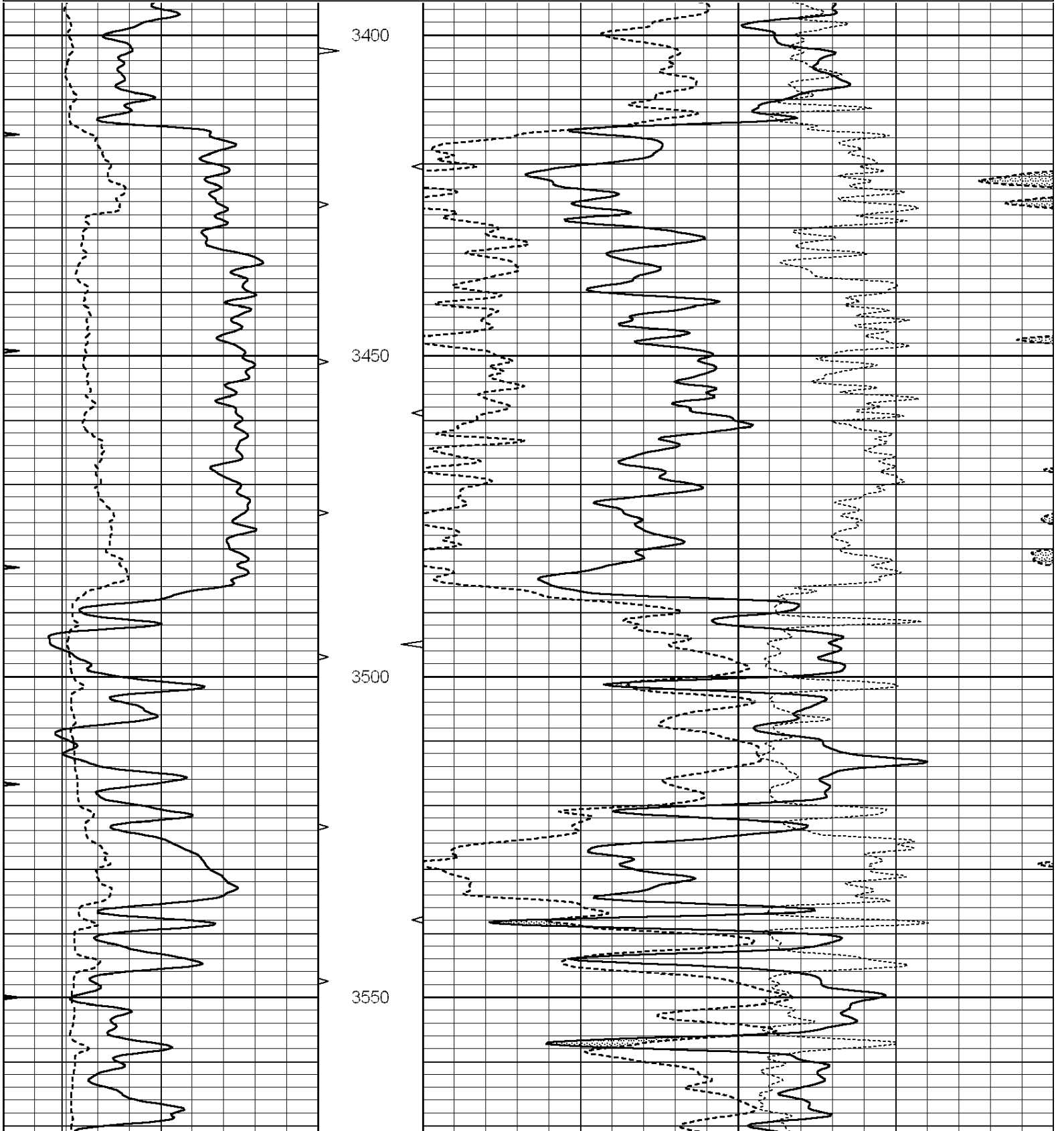
THANK YOU FOR USING NABORS COMPLETION & PRODUCTION SERVICES(785) 628-6395
DIRECTIONS
SPEARVILLE, 1 SOUTH, 1/2 EAST, 4 SOUTH, 3 WEST, 1/2 SOUTH, EAST INTO

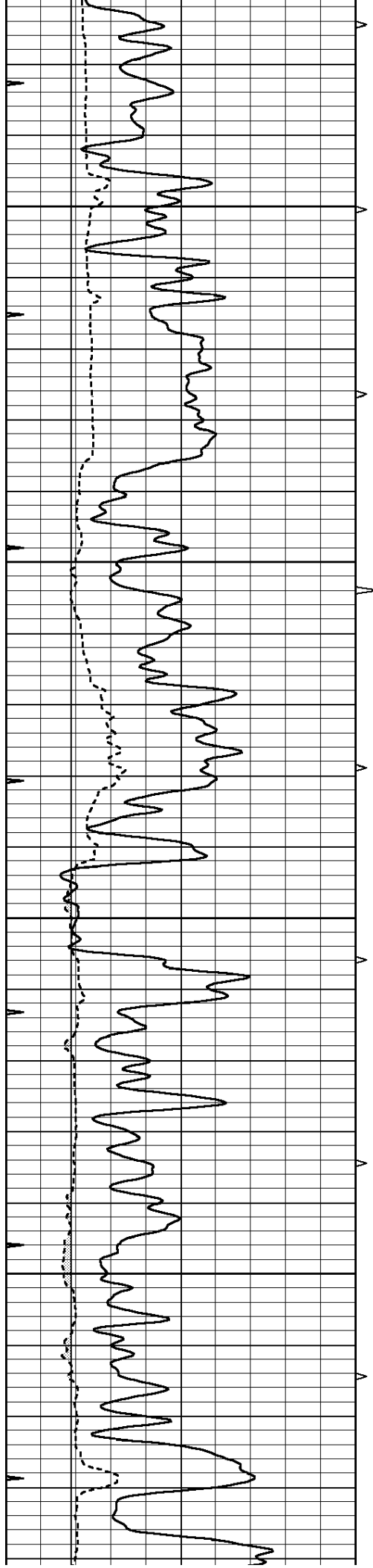


MAIN SECTION

Database File: 40-009992ddn.db
 Dataset Pathname: pass3.2
 Presentation Format: _den_neu
 Dataset Creation: Thu Nov 01 23:34:39 2012 by Calc Open-Cased 090629
 Charted by: Depth in Feet scaled 1:240

0	GAMMA RAY (GAPI)	150	AVTX	30	COMPENSATED DENSITY (pu)	-10
6	CALIPER (in)	16	10 (ft3)	0 30	COMPENSATED NEUTRON (pu)	-10
0	MINMK	20	BVTX		-0.25 CORRECTION (g/cc)	0.25
			0 (ft3)	10		



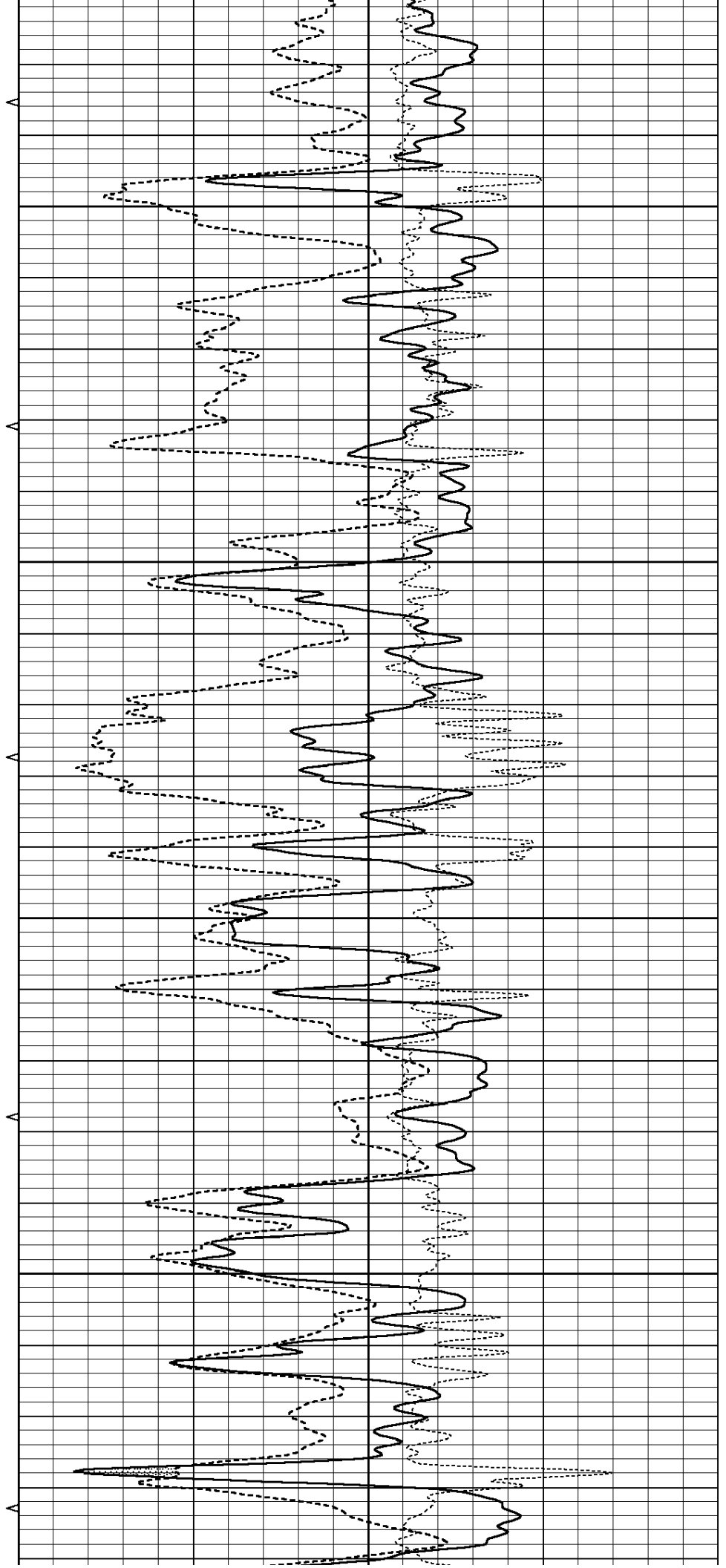


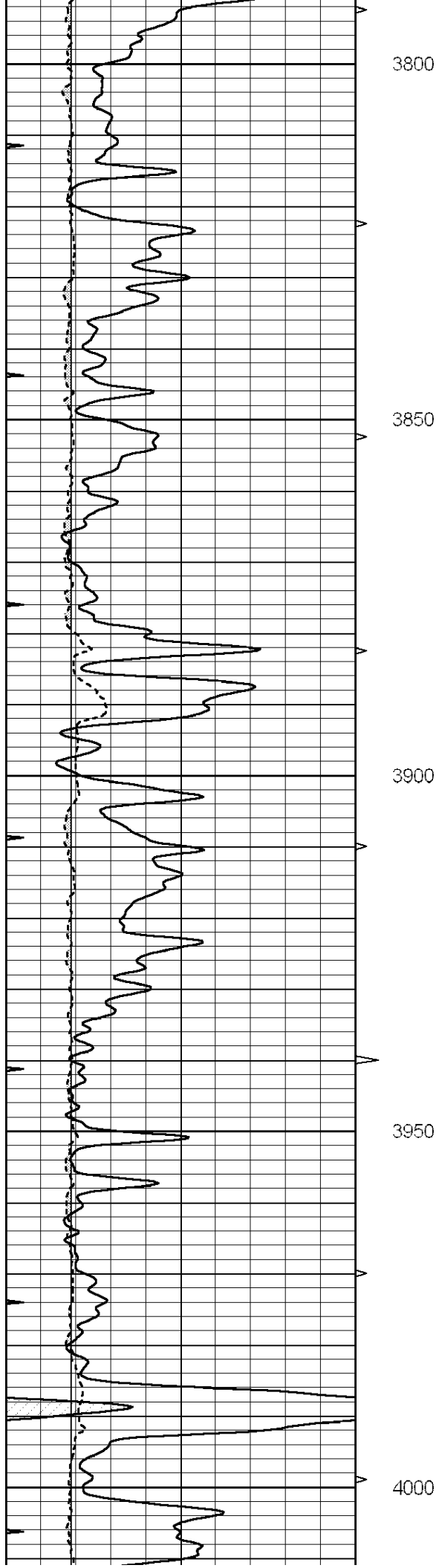
3600

3650

3700

3750





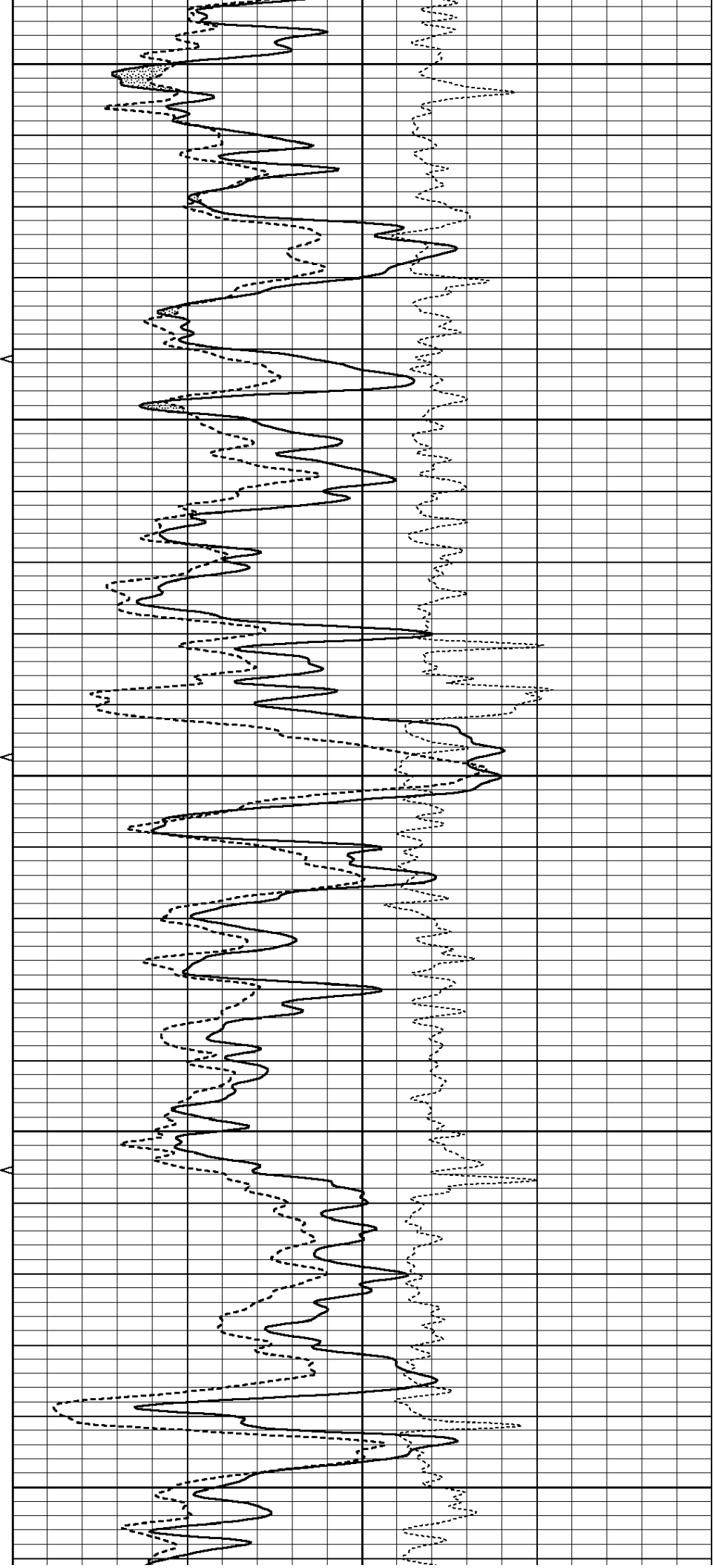
3800

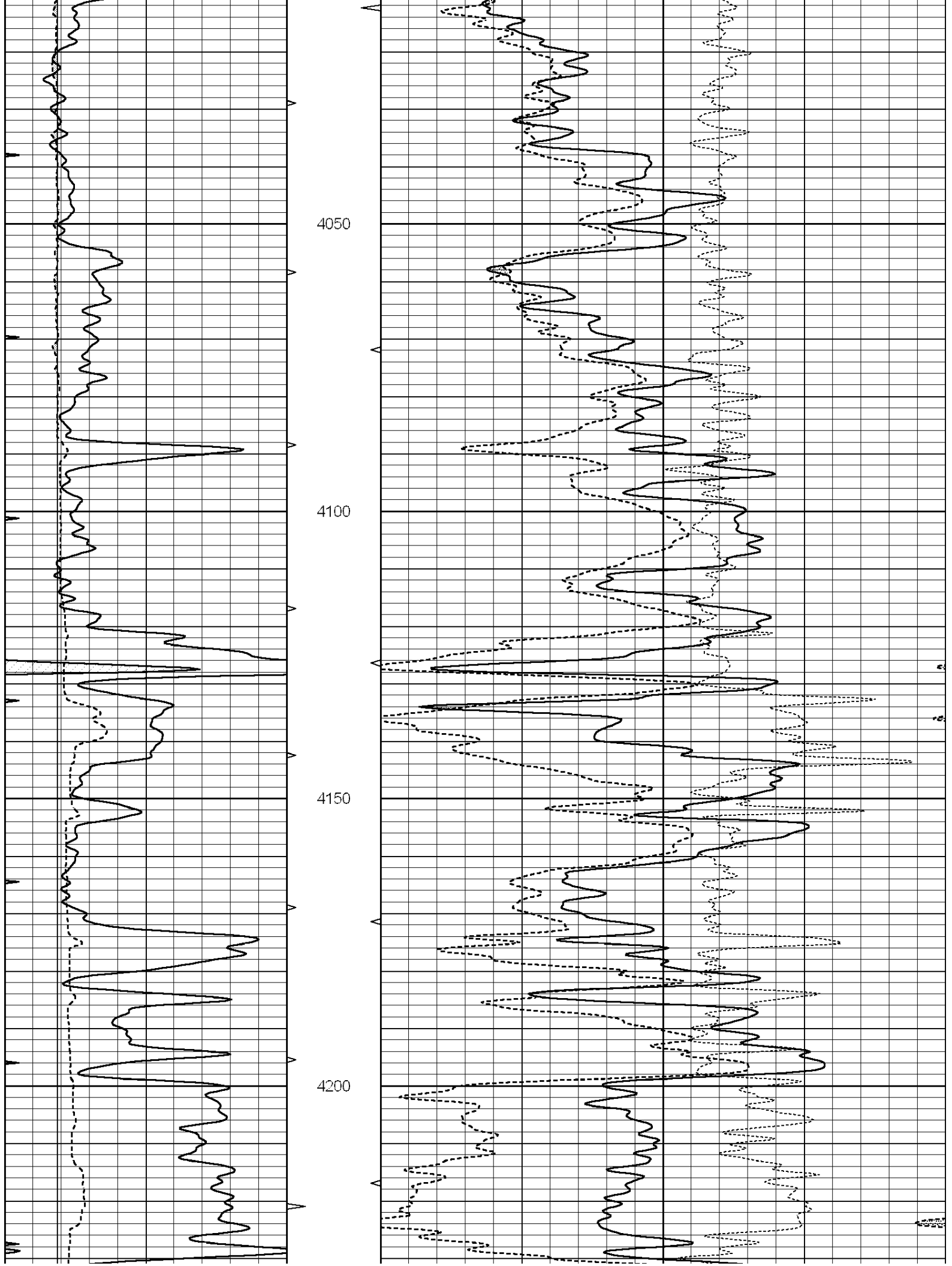
3850

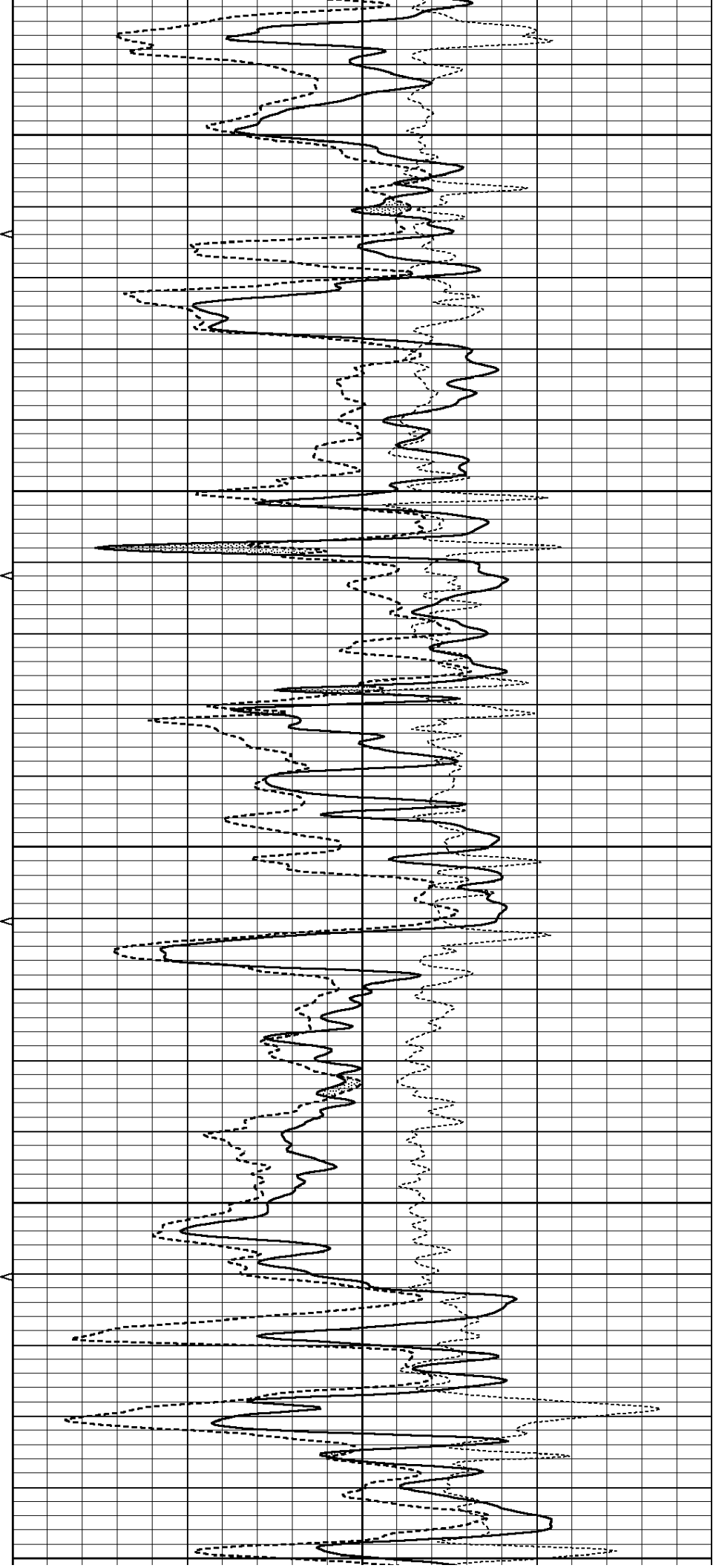
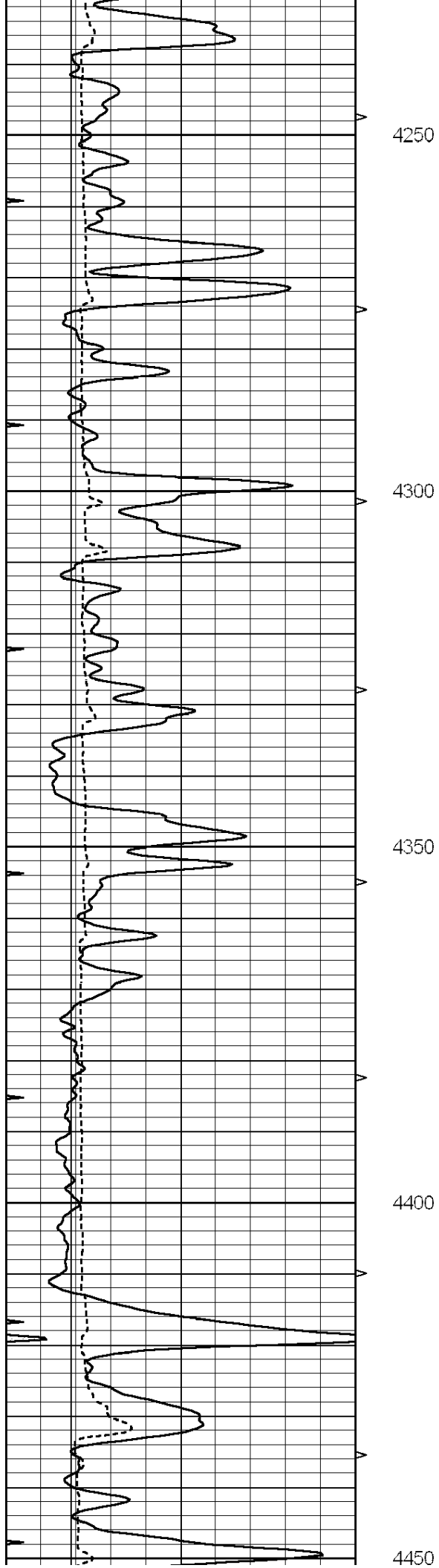
3900

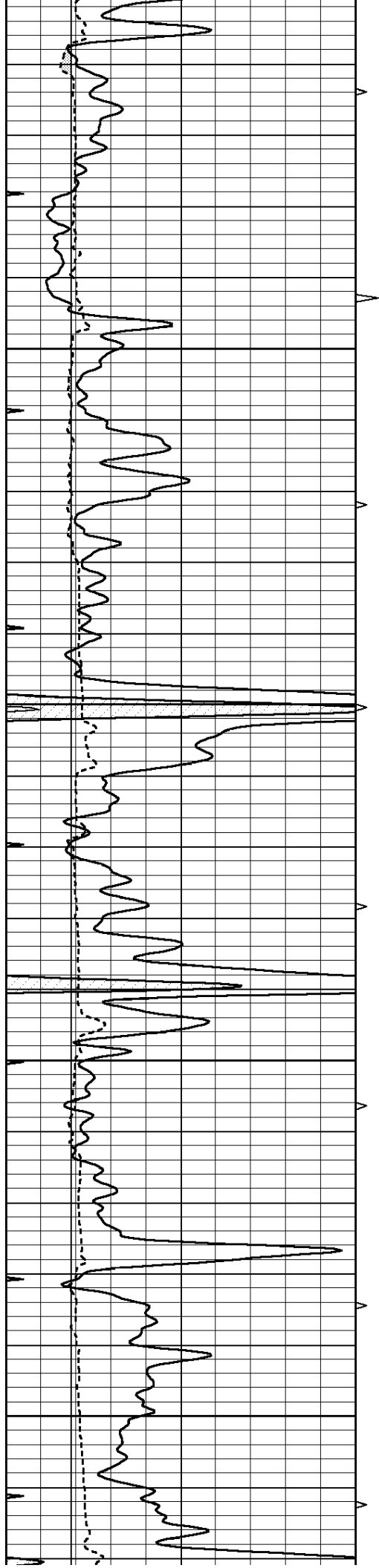
3950

4000







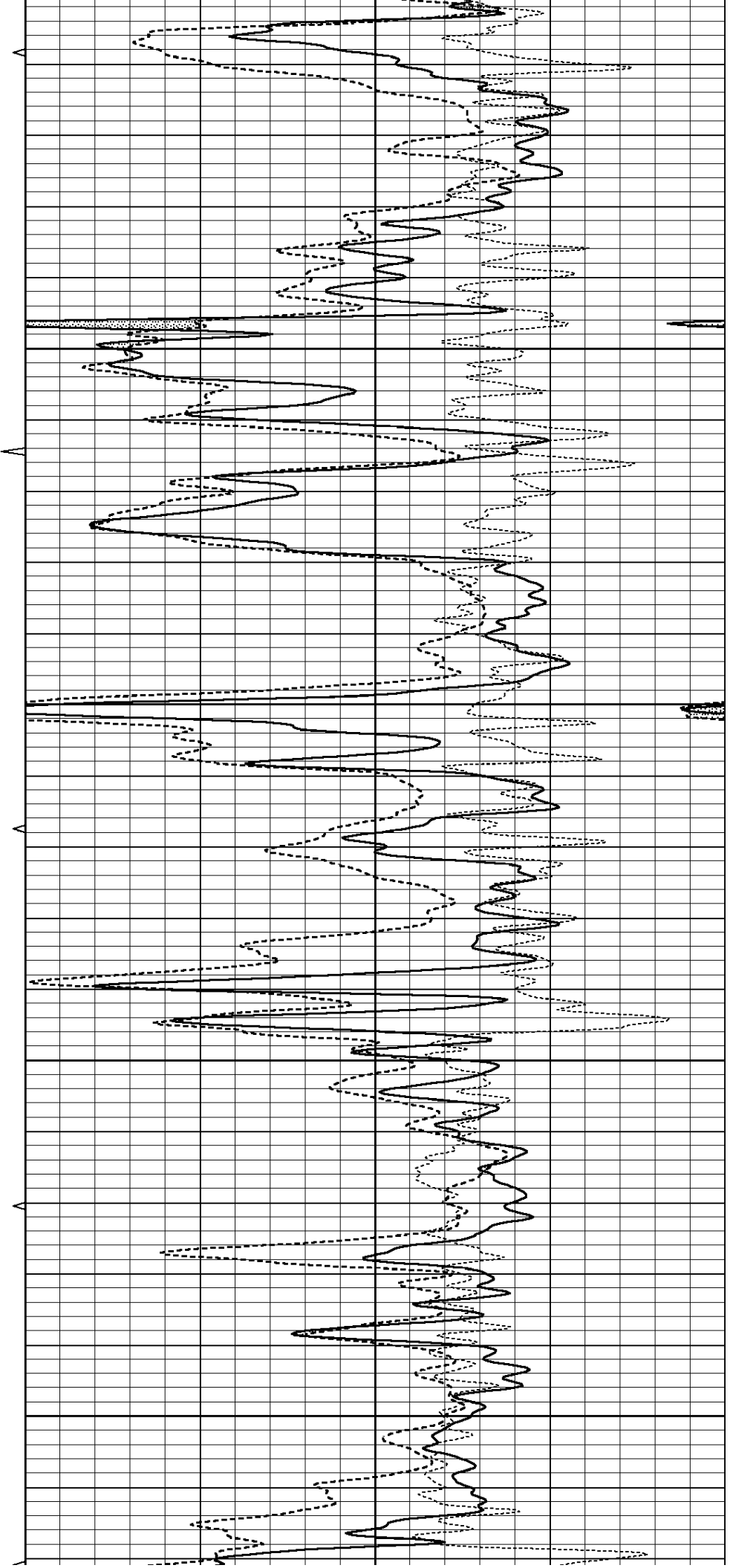


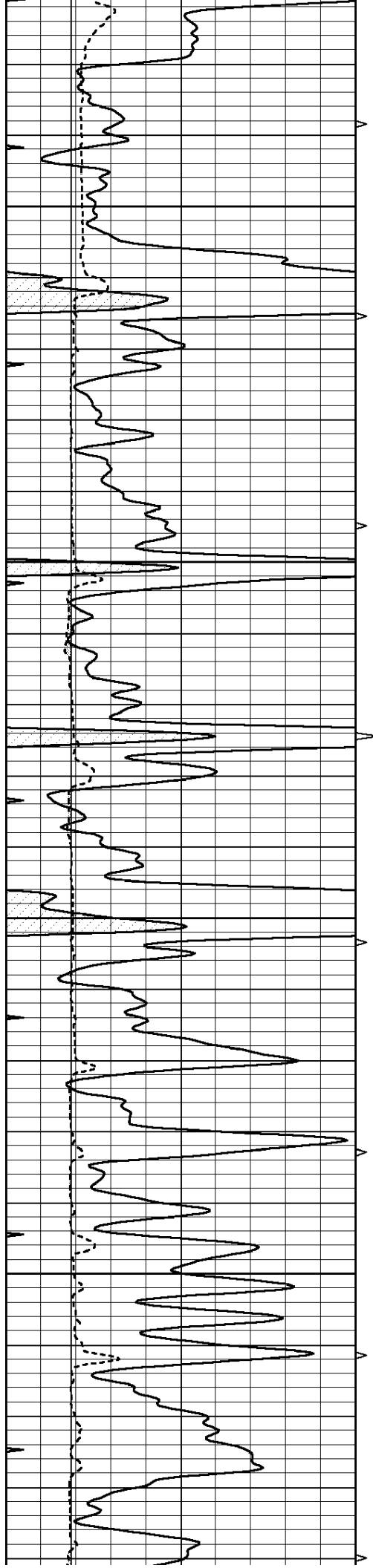
4500

4550

4600

4650



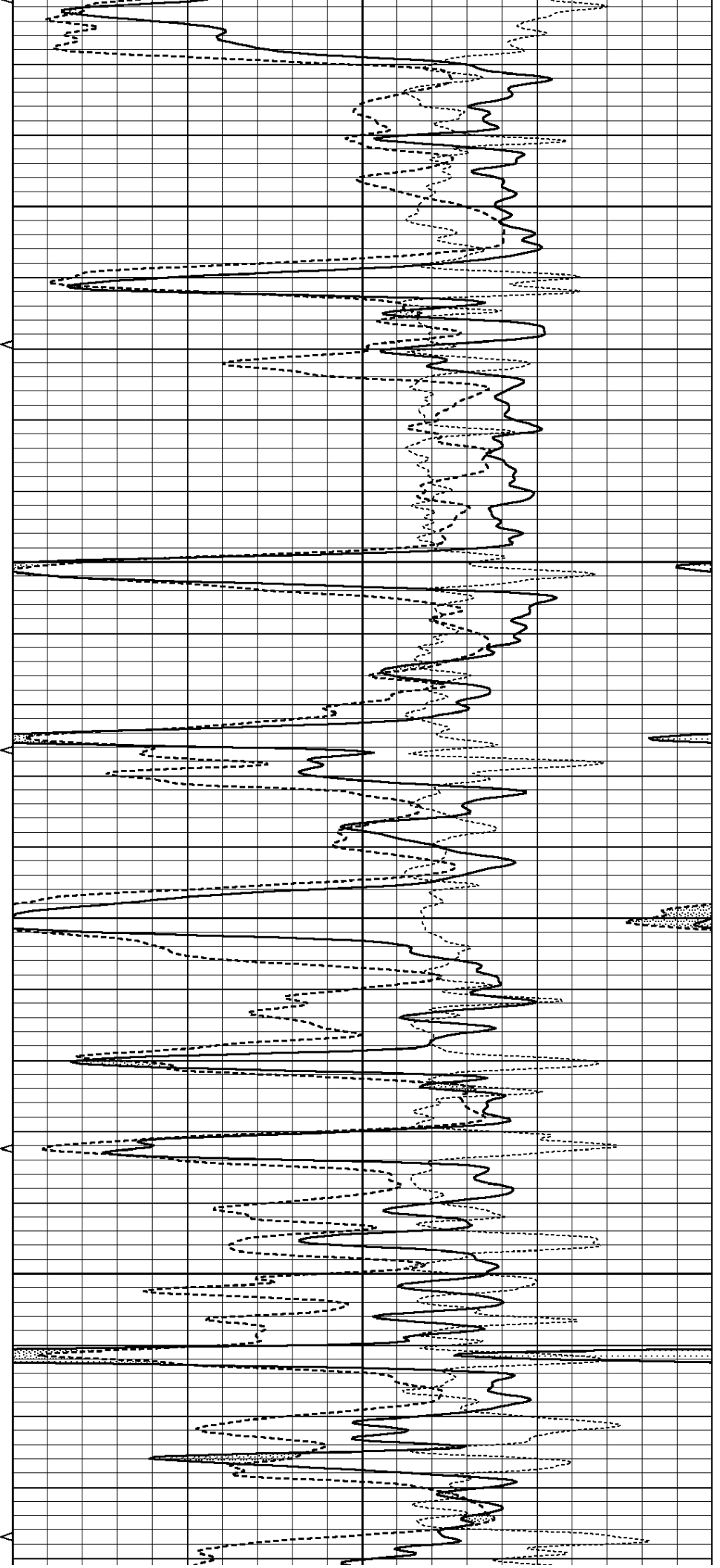


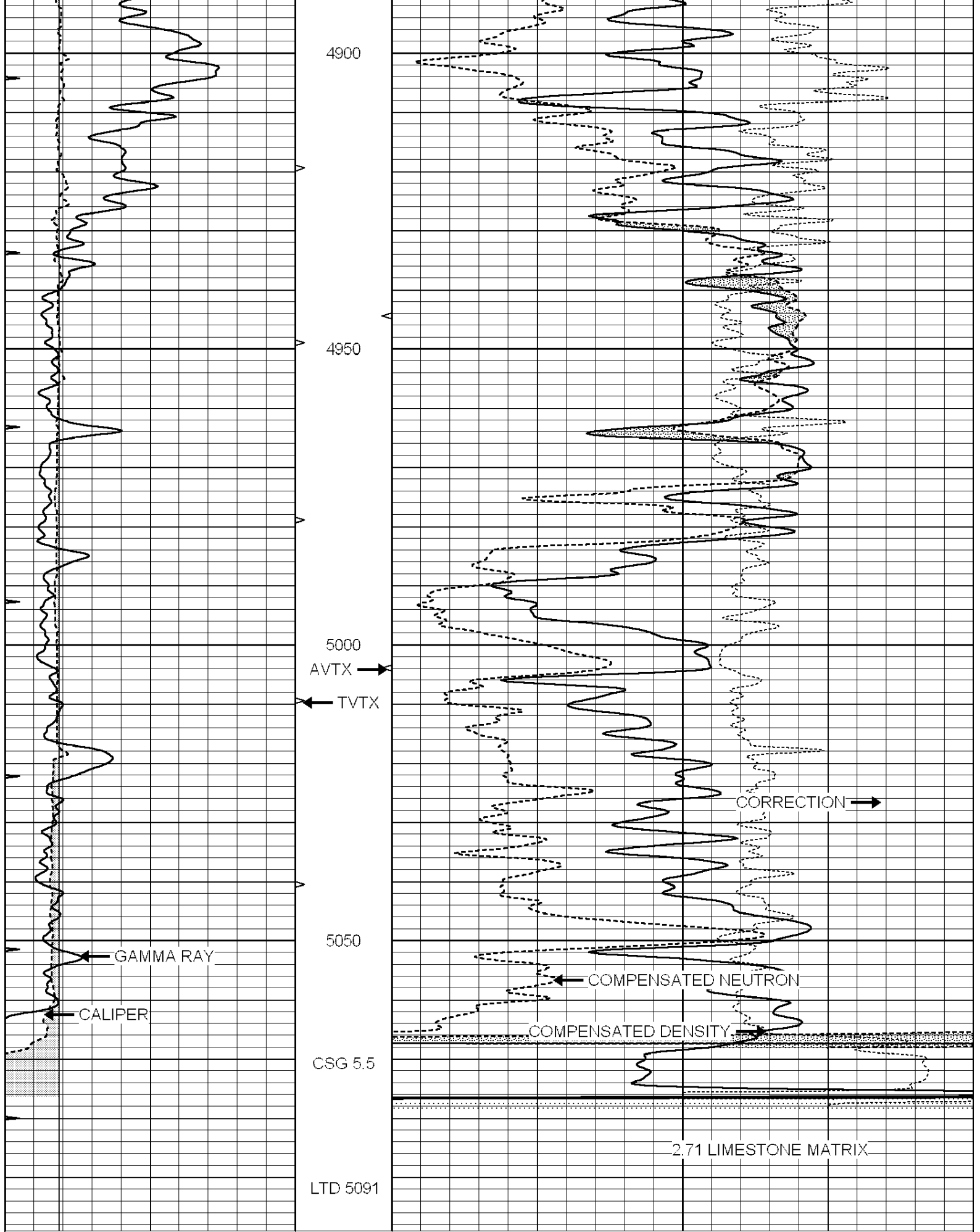
4700

4750

4800

4850





0	GAMMA RAY (GAPI)	150	AVTX	30	COMPENSATED DENSITY (pu)	-10	
6	CALIPER (in)	16	10 (ft)	0 30	COMPENSATED NEUTRON (pu)	-10	
0	MINIMK	20	TVTX		0.25	CORRECTION (pu)	0.25

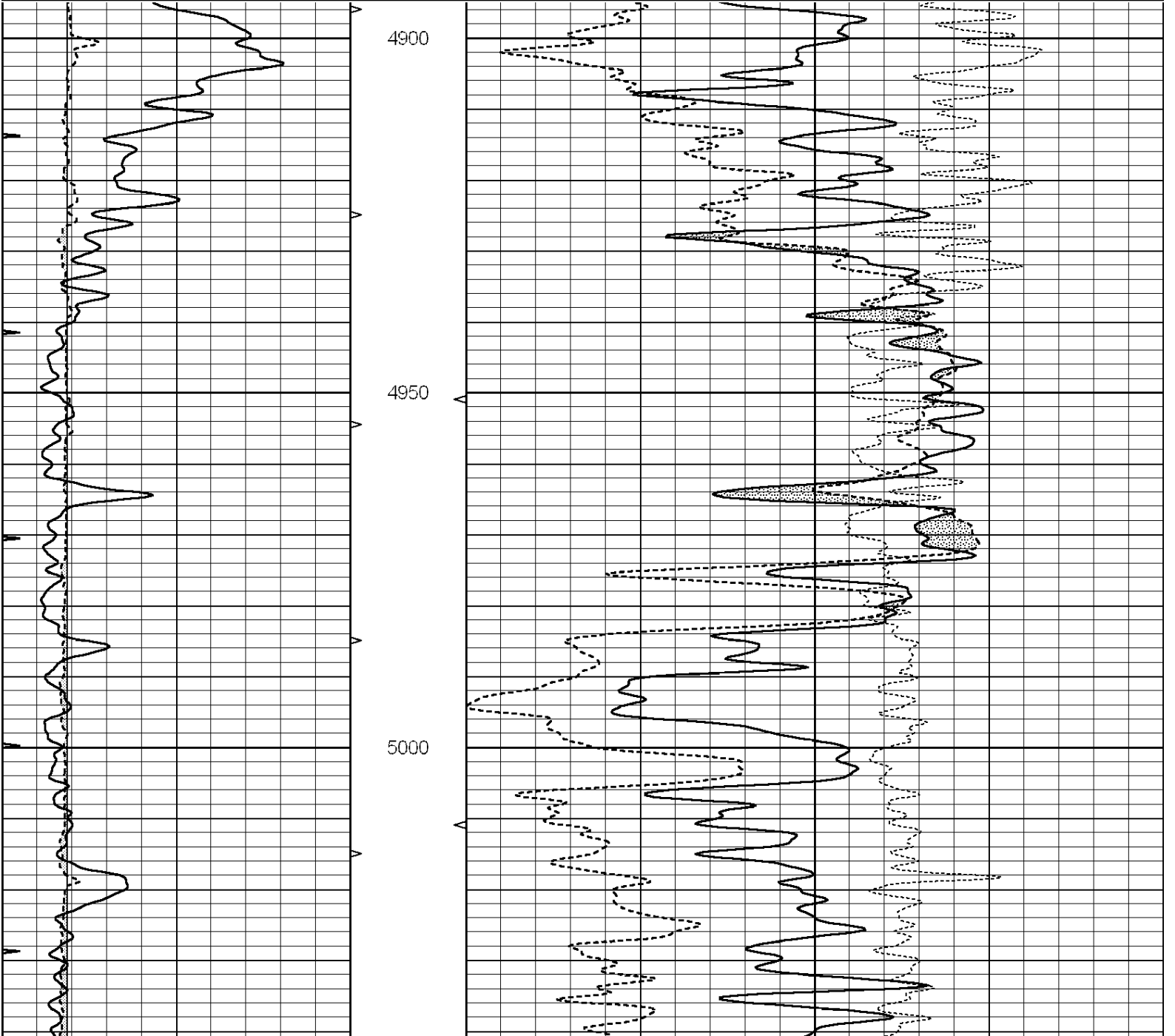
MINMK	20	BVTX	0	(ft3)	10	-0.25	CORRECTION (g/cc)	0.25
-------	----	------	---	-------	----	-------	-------------------	------



REPEAT SECTION

Database File: 40-009992ddn.db
 Dataset Pathname: pass2.2
 Presentation Format: _den_neu
 Dataset Creation: Thu Nov 01 23:42:38 2012 by Calc Open-Cased 090629
 Charted by: Depth in Feet scaled 1:240

0	GAMMA RAY (GAPI)	150	AVTX	30	COMPENSATED DENSITY (pu)	-10	
6	CALIPER (in)	16	10 (ft3)	0 30	COMPENSATED NEUTRON (pu)	-10	
0	MINMK	20	BVTX		-0.25	CORRECTION (g/cc)	0.25
			0 (ft3)	10			



Deep	0.000	0.000	mmho/m	0.000	0.000	mmho/m	0.000	0.000
Medium	0.000	0.000	mmho/m	0.000	0.000	mmho/m	0.000	0.000
LL3		1.000	Ohm-m		1.000	Ohm-m		
		0.000	Ohm-m		0.000	Ohm-m		
		1.000	mmho-m		1.000	mmho-m		

Compensated Density Calibration Report

Serial-Model:	GEAR4-GEARHART
Source / Verifier:	143 / 143
Master Calibration Performed:	Mon Mar 19 19:07:19 2012

Master Calibration

	Density		Far Detector	Near Detector	
Magnesium	1.710	g/cc	1015.91	497.51	cps
Aluminum	2.600	g/cc	227.67	350.20	cps
Spine Angle = 76.79			Density/Spine Ratio = 0.579		
	Size		Reading		
Small Ring	8.00	in	3.21	V	
Large Ring	14.00	in	5.46	V	

Compensated Neutron Calibration Report

Serial Number:	6I
Tool Model:	G

CALIBRATION

Detector	Readings		Target	Normalization
Short Space	1.00	cps	1.00 cps	1.0000
Long Space	1.00	cps	1.00 cps	1.0000

Gamma Ray Calibration Report

Serial Number:	#8
Tool Model:	OPEN
Performed:	Mon Jun 13 16:56:43 2011
Calibrator Value:	150.0 GAPI
Background Reading:	0.0 cps
Calibrator Reading:	175.0 cps
Sensitivity:	0.8371 GAPI/cps