



**COMPLETION
& PRODUCTION
SERVICES CO.**

**SONIC
LOG**

Company RITCHIE EXPLORATION, INC
Well NAU 25C 1
Field WILDCAT
County FORD
State KANSAS

Company RITCHIE EXPLORATION, INC
Well NAU 25C 1
Field WILDCAT
County FORD State KANSAS

Location: API # : 15-057-20848-00-00
SW - NE - SW
1798' FSL & 1538' FWL
Permanent Datum GROUND LEVEL Elevation 2418
Log Measured From KELLY BUSHING 12' A.G.L.
Drilling Measured From KELLY BUSHING
Elevation
K.B. 2430
D.F. 2428
G.L. 2418

Date	11/01/2012
Run Number	ONE
Depth Driller	5090
Depth Logger	5091
Bottom Logged Interval	5082
Top Log Interval	350
Casing Driller	8 5/8" @ 372
Casing Logger	369
Bit Size	7 7/8
Type Fluid in Hole	CHEMICAL MUD
Density / Viscosity	9.2/55
pH / Fluid Loss	10.5/11.6
Source of Sample	FLOWLINE
Rim @ Meas. Temp	.6@86F
Rmf @ Meas. Temp	.474@86F
Rmc @ Meas. Temp	.72@86
Source of Rmf / Rmc	MEASURED
Rim @ BHT	.403@128F
Time Circulation Stopped	2 HOURS
Time Logger on Bottom	9:45 P.M.
Maximum Recorded Temperature	128
Equipment Number	680
Location	HAYS, KS.
Recorded By	MIKE GARRISON
Witnessed By	ADAM ELDANI

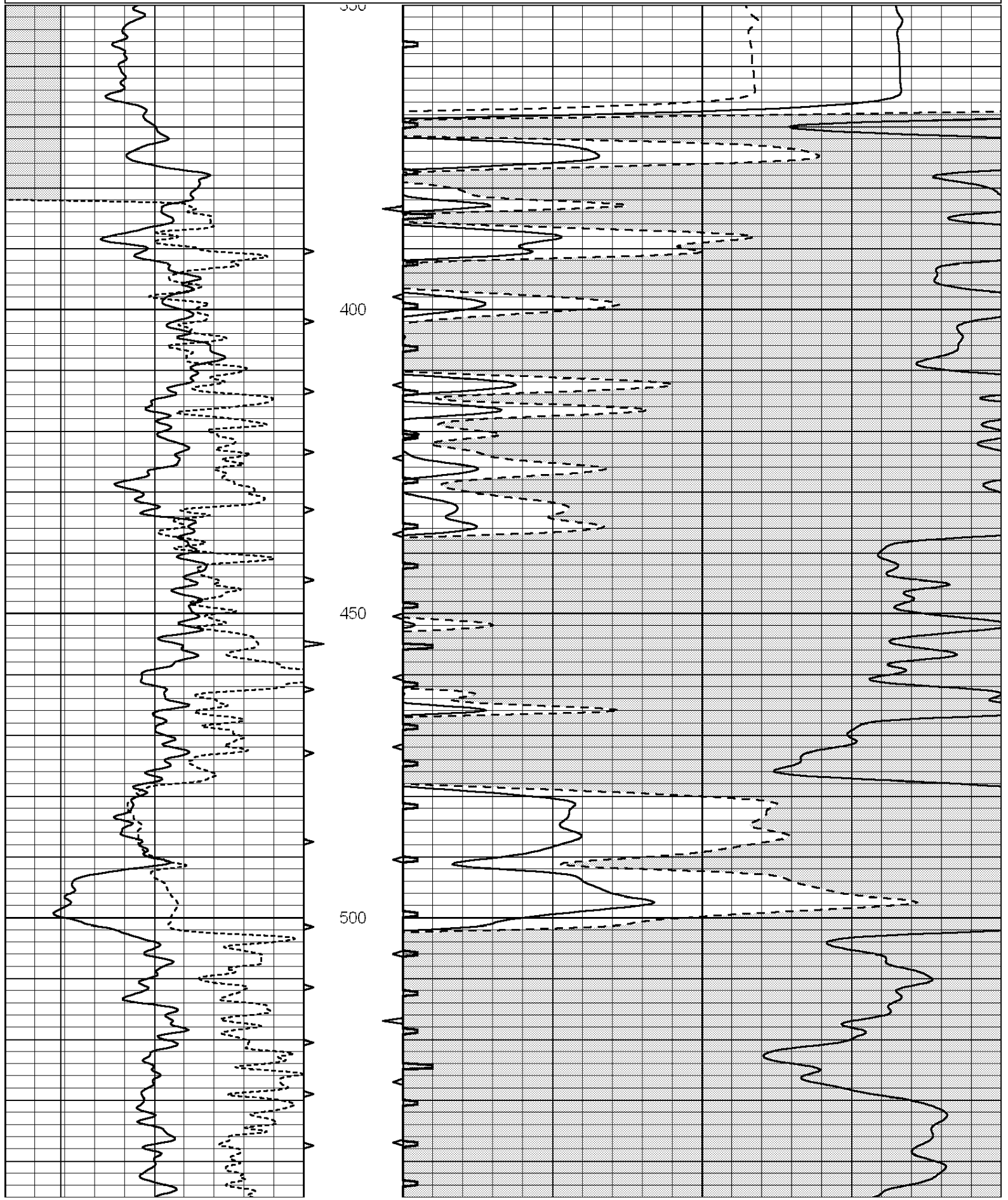
<<< Fold Here >>>

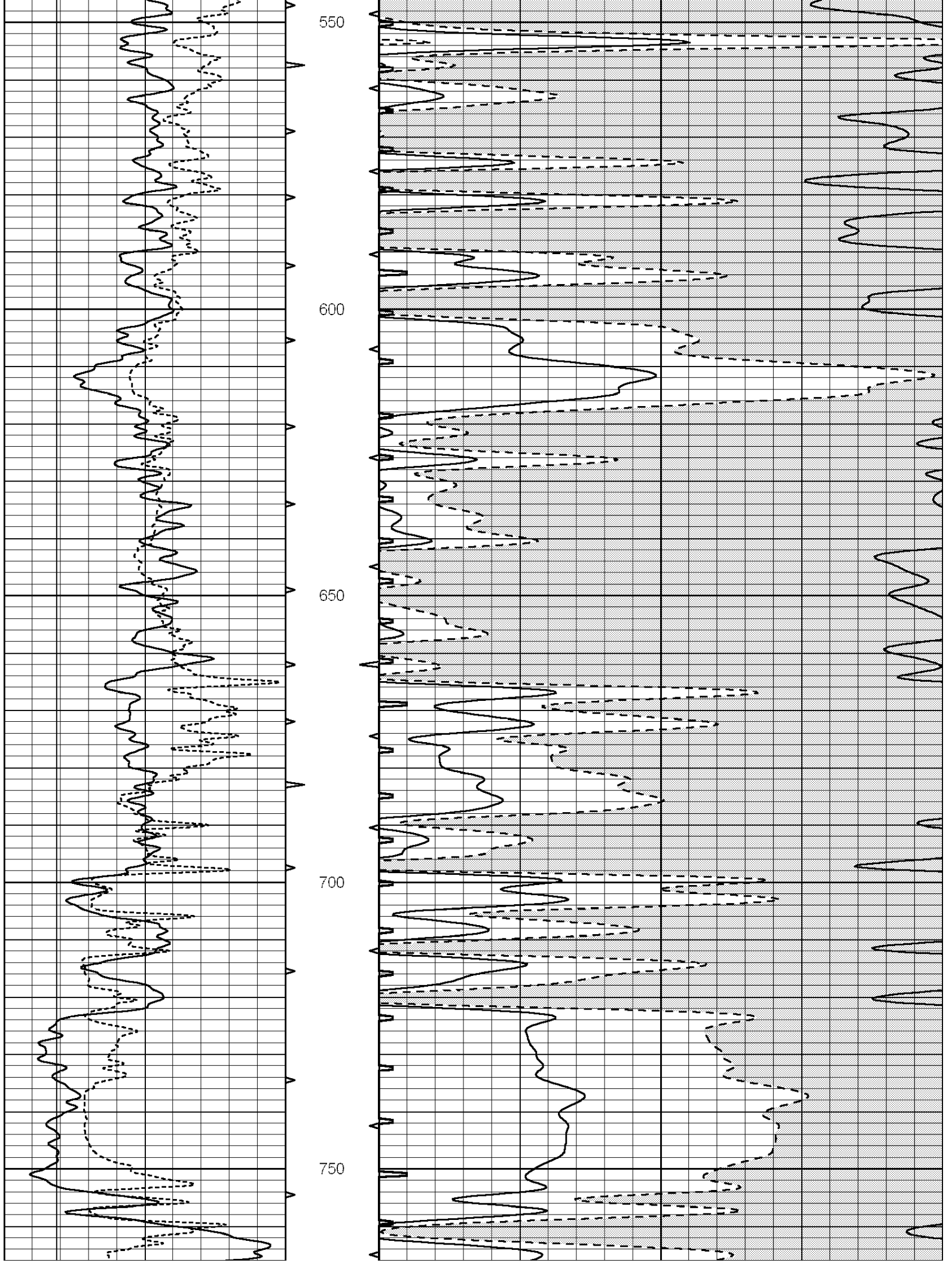
All interpretations are opinions based on inferences from electrical or other measurements and we cannot and do not guarantee the accuracy or correctness of any interpretation, and we shall not, except in the case of gross or willful negligence on our part, be liable or responsible for any loss, costs, damages, or expenses incurred or sustained by anyone resulting from any interpretation made by any of our officers, agents or employees. These interpretations are also subject to our general terms and conditions set out in our current Price Schedule.

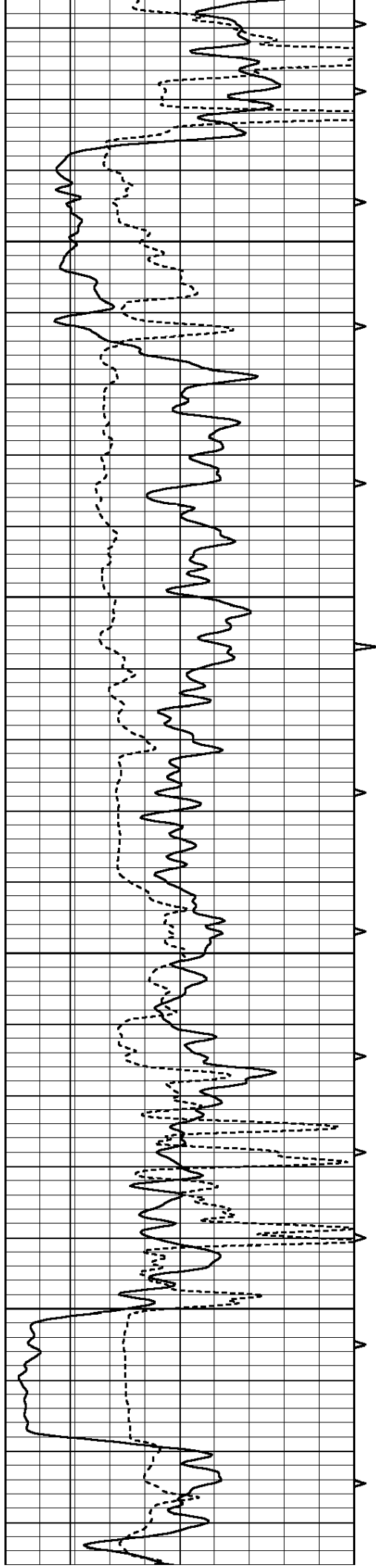
Comments

THANK YOU FOR USING NABORS COMPLETION & PRODUCTION SERVICES(785) 628-6395
DIRECTIONS
SPEARVILLE, 1 SOUTH, 1/2 EAST, 4 SOUTH, 3 WEST, 1/2 SOUTH, EAST INTO

0	GAMMA RAY (GAPI)	150	ABHV	140	DELTA TIME (usec/ft)	40
6	CALIPER (in)	16	10 (ft3) 0	30	SONIC POROSITY (pu)	-10
-----			TBHV	0	ITT (msec)	20
-----			0 (ft3) 10			





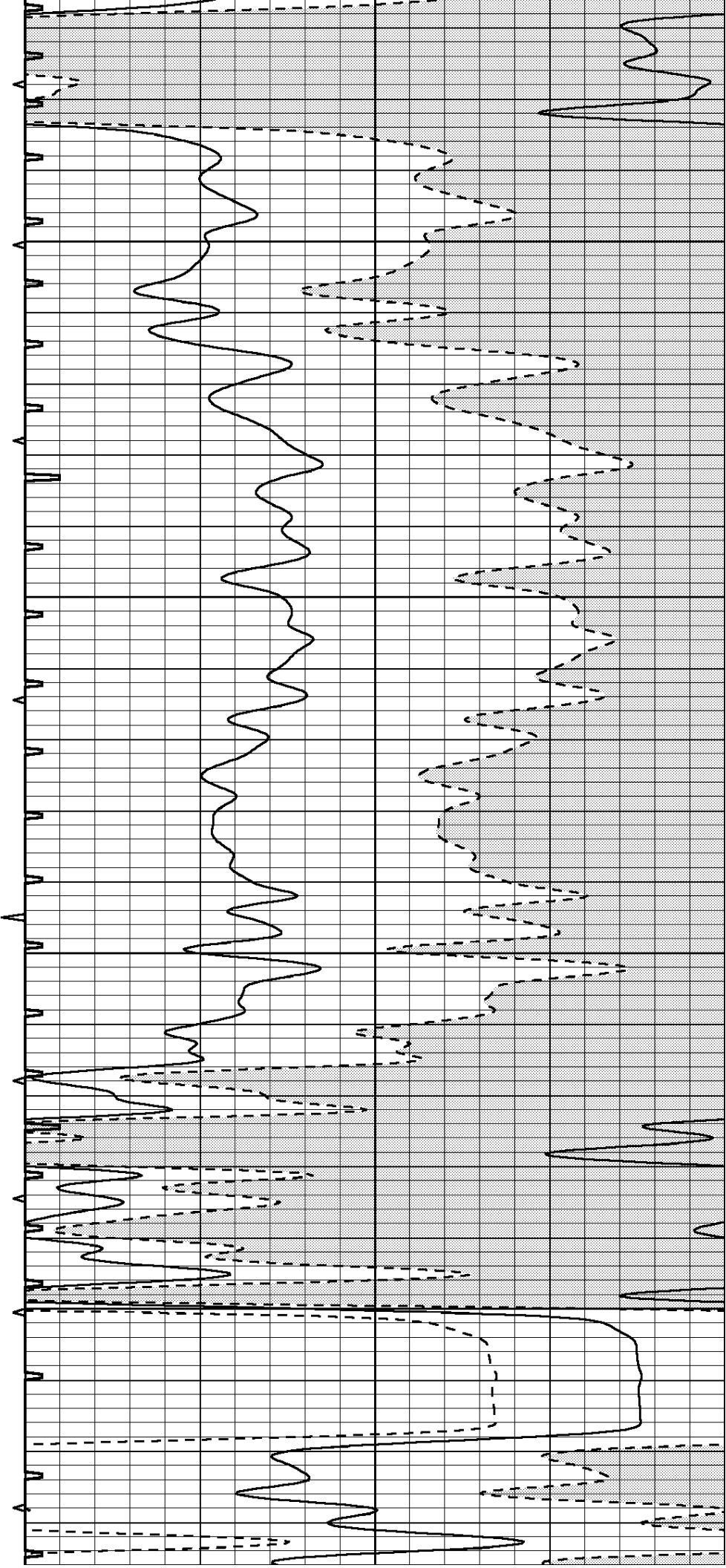


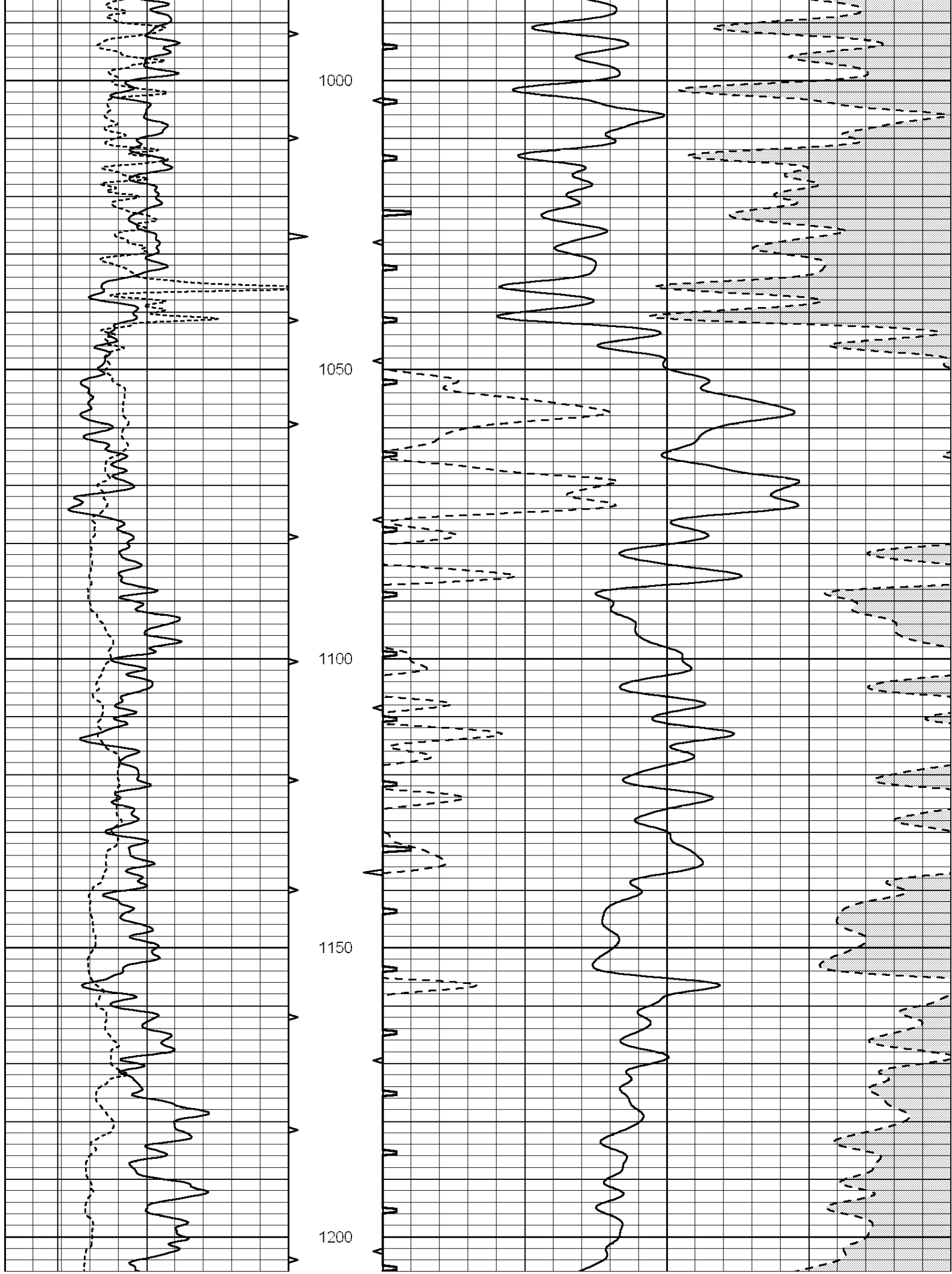
800

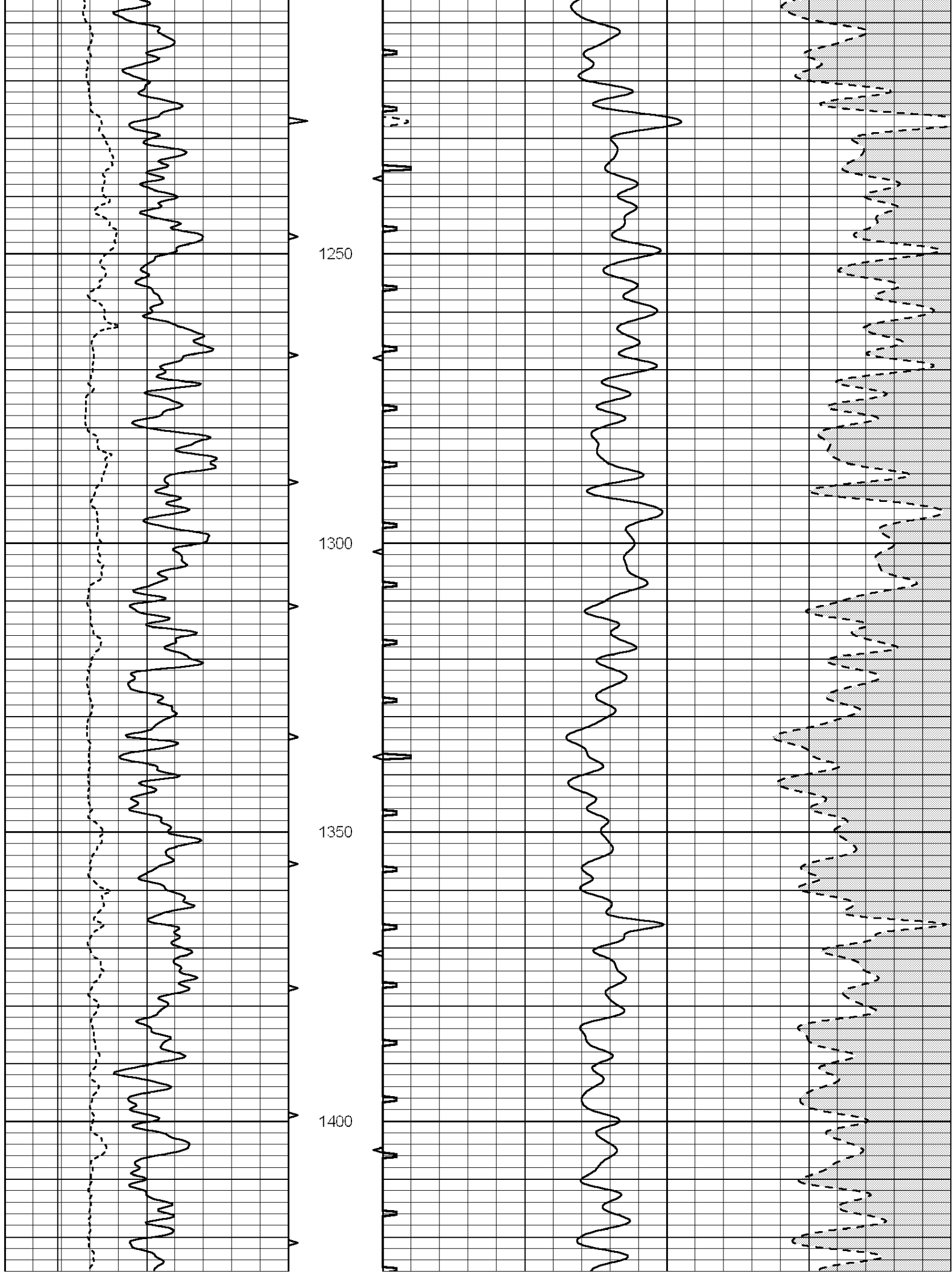
850

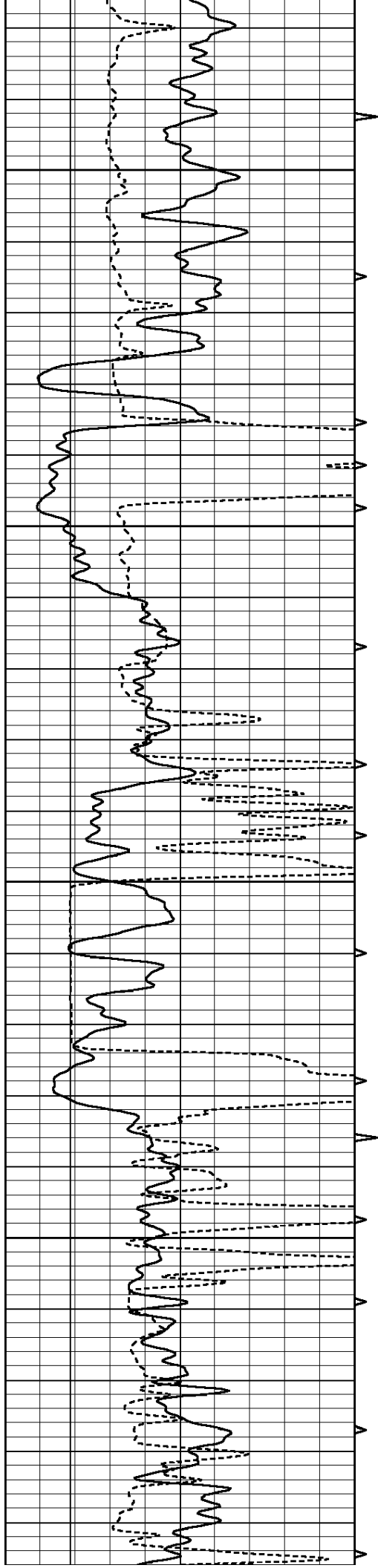
900

950







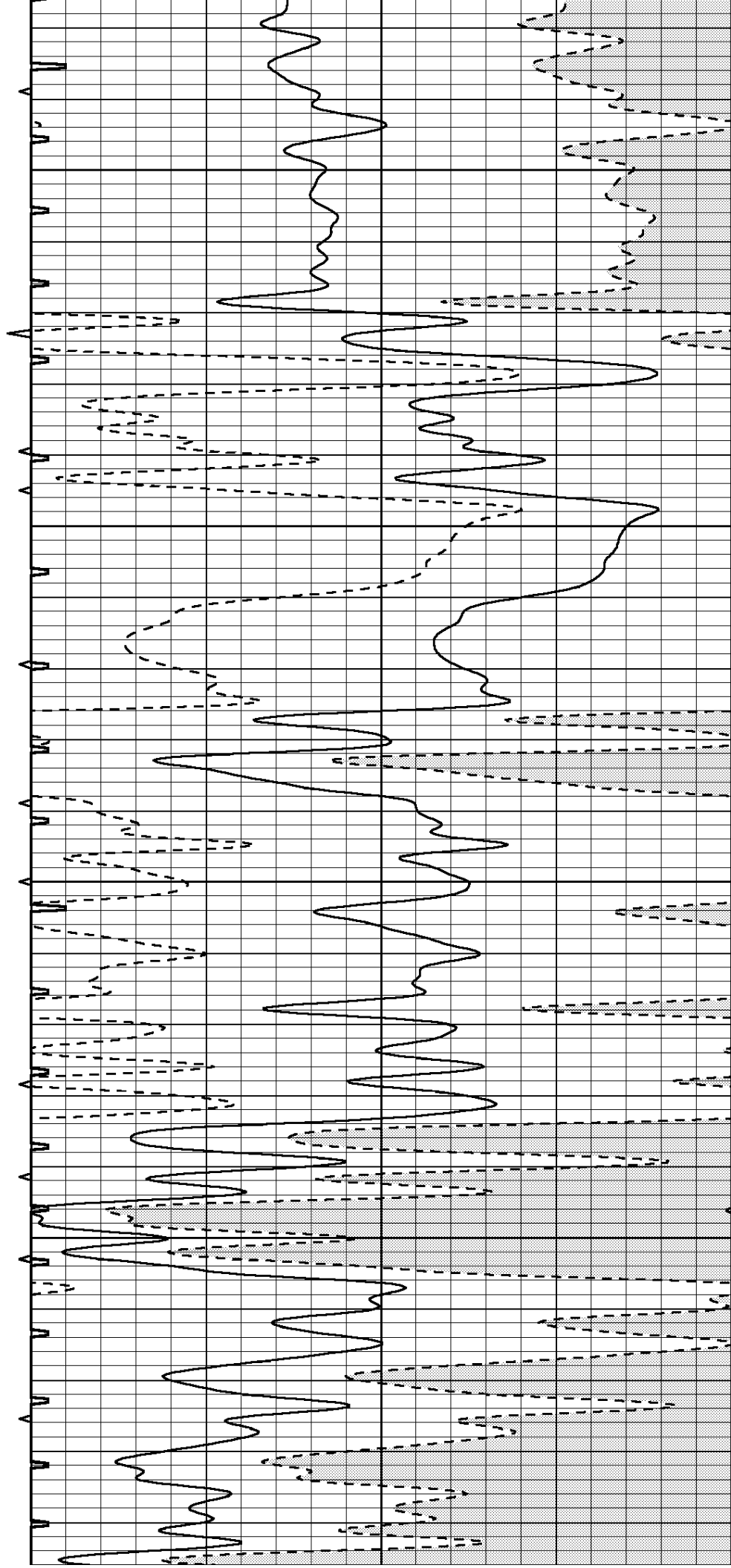


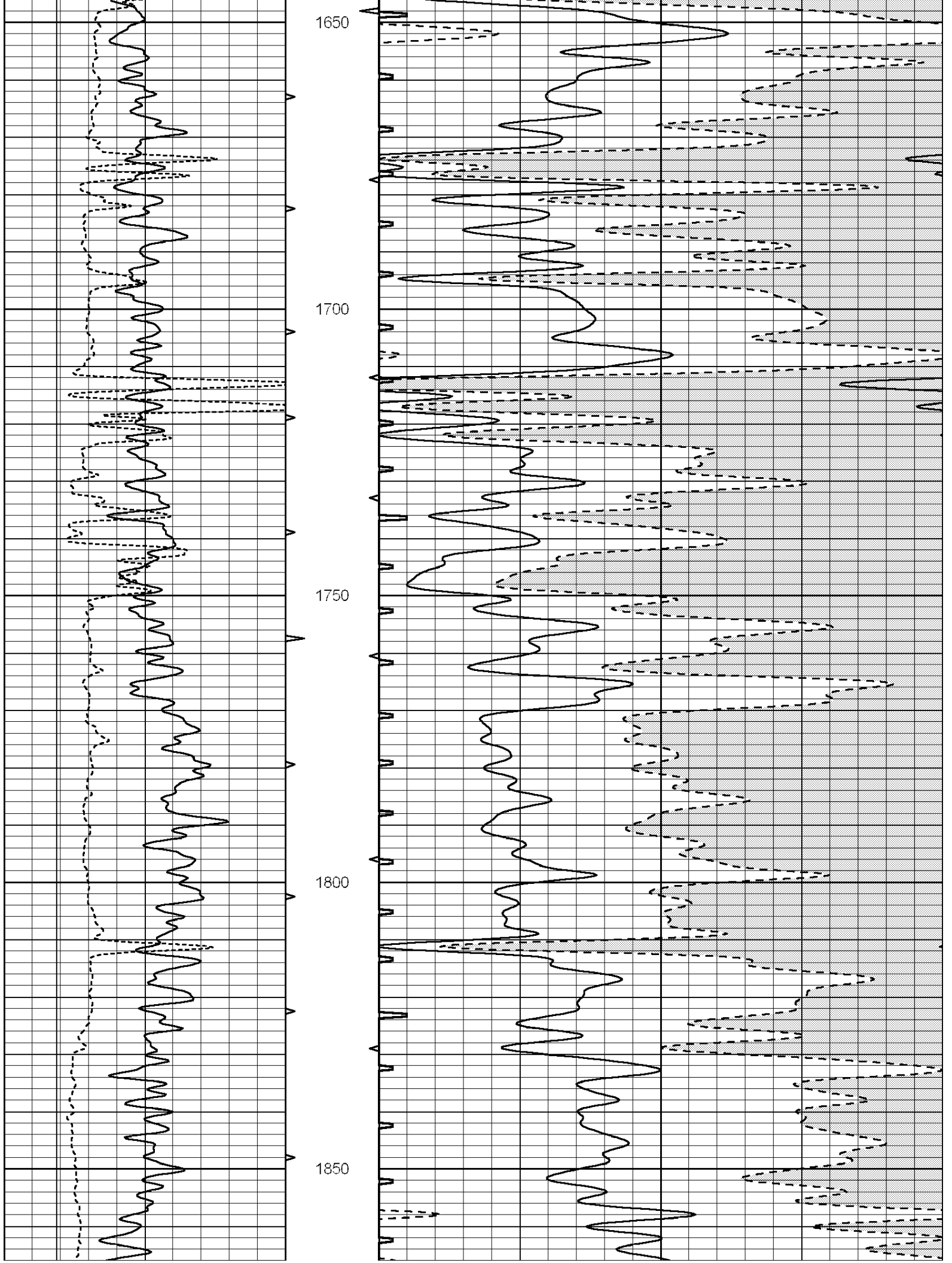
1450

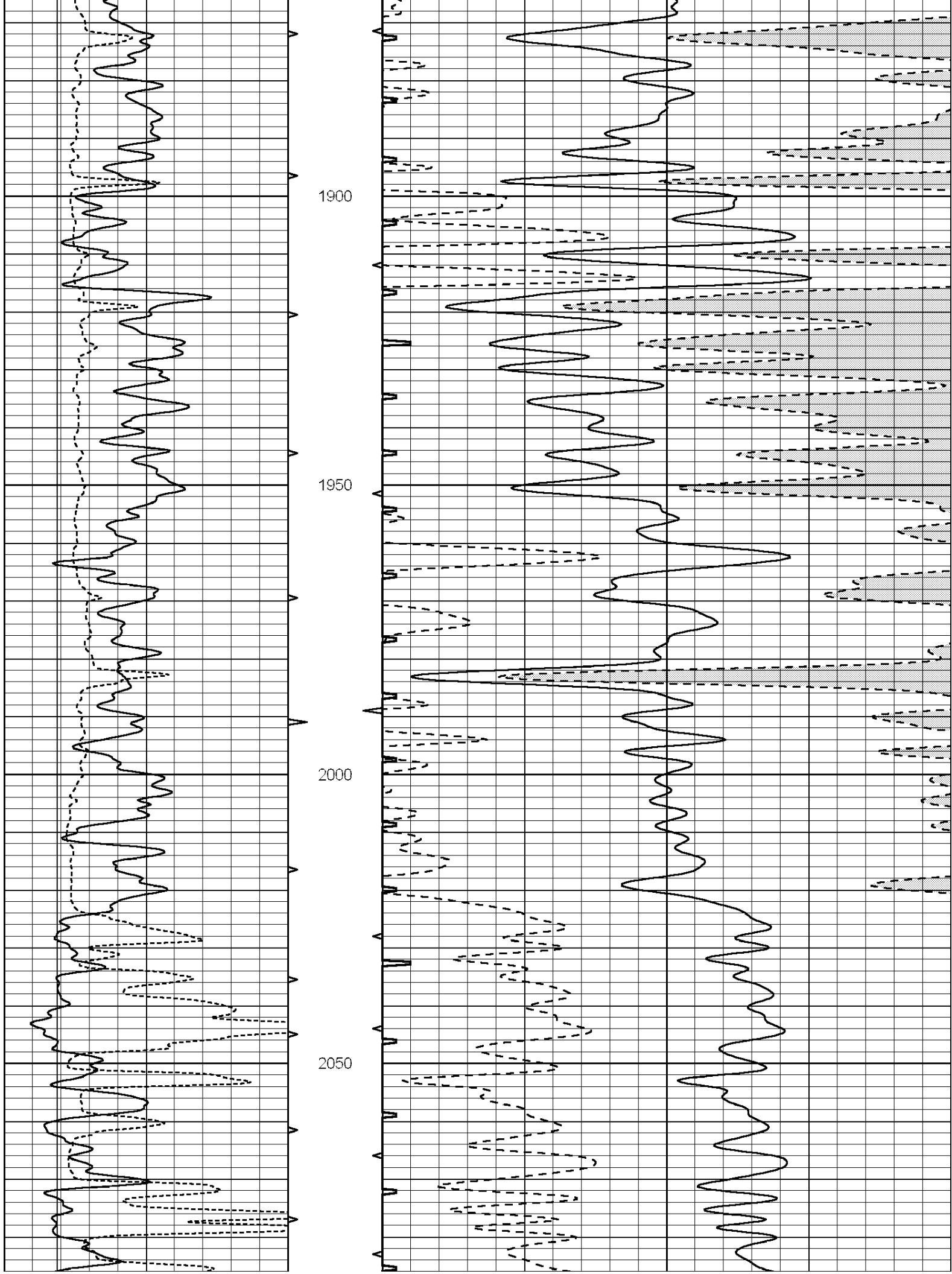
1500

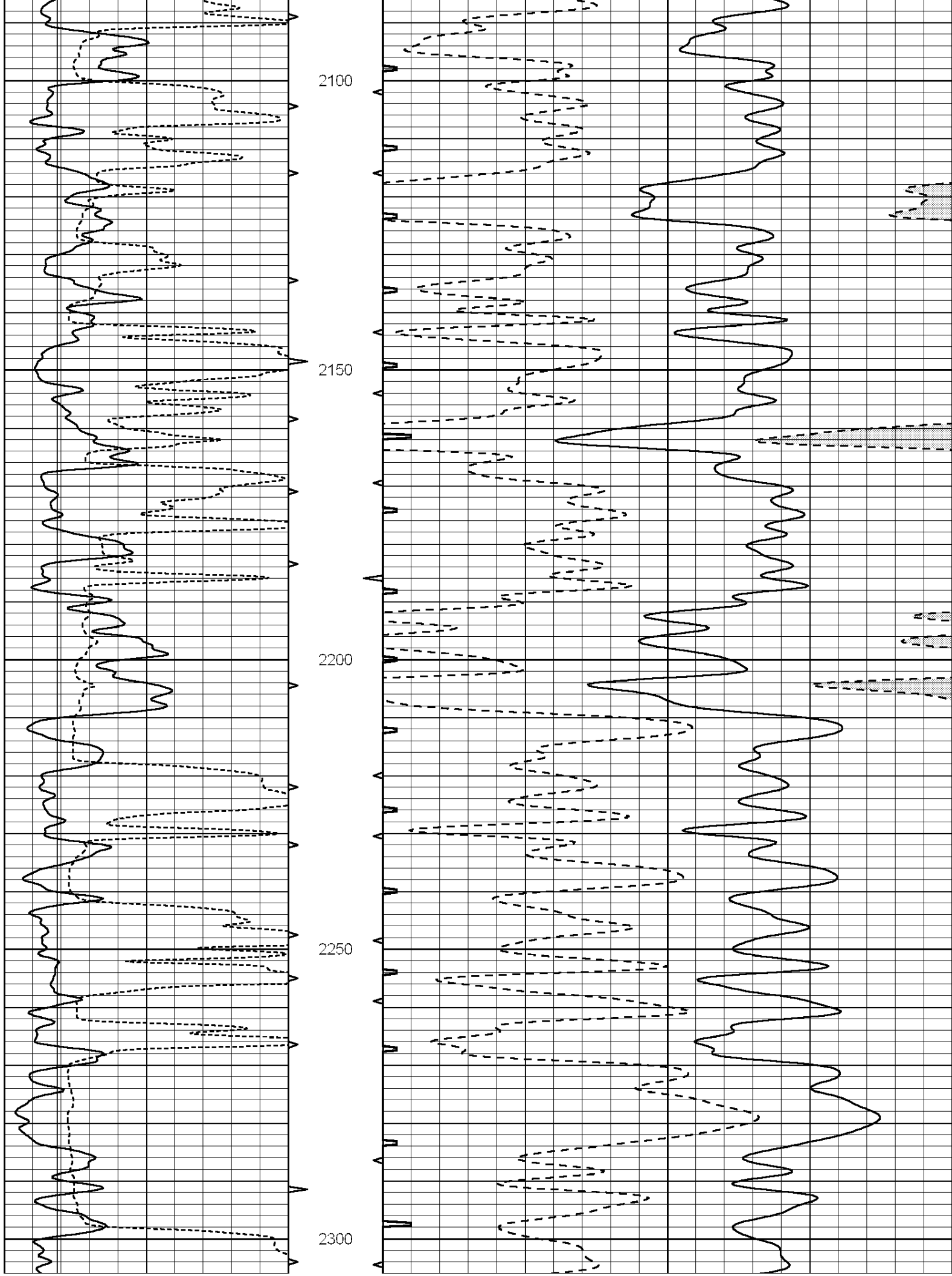
1550

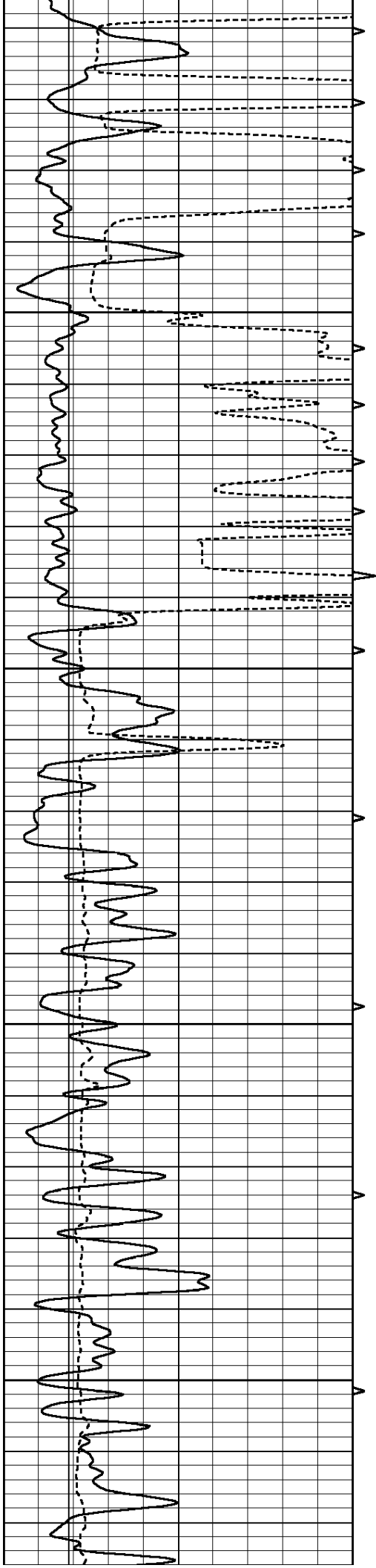
1600









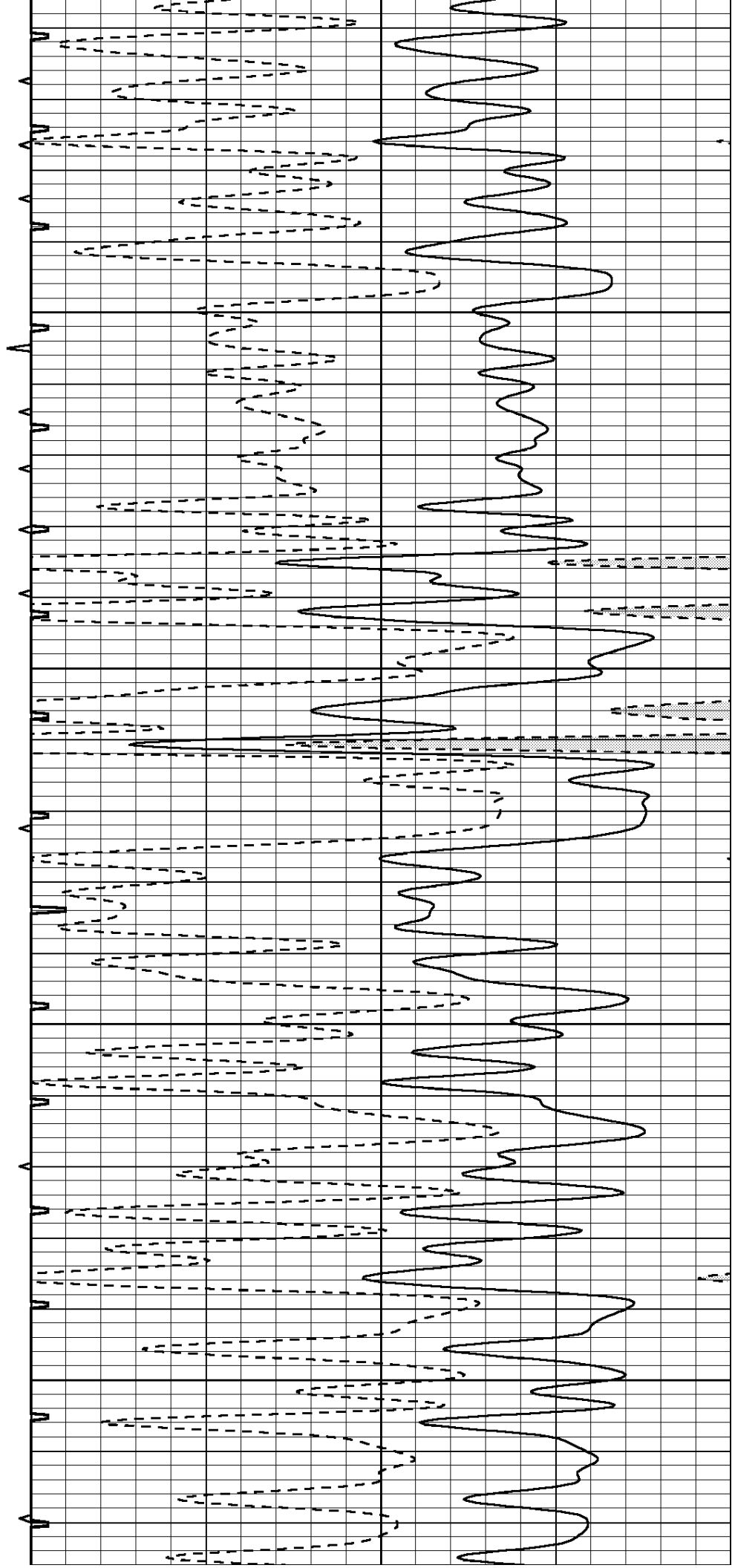


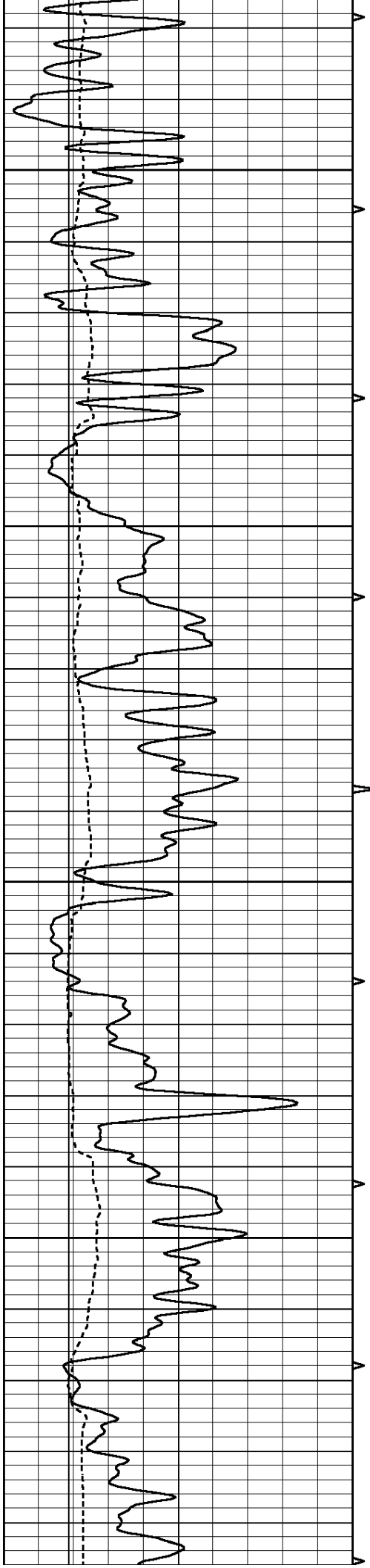
2350

2400

2450

2500



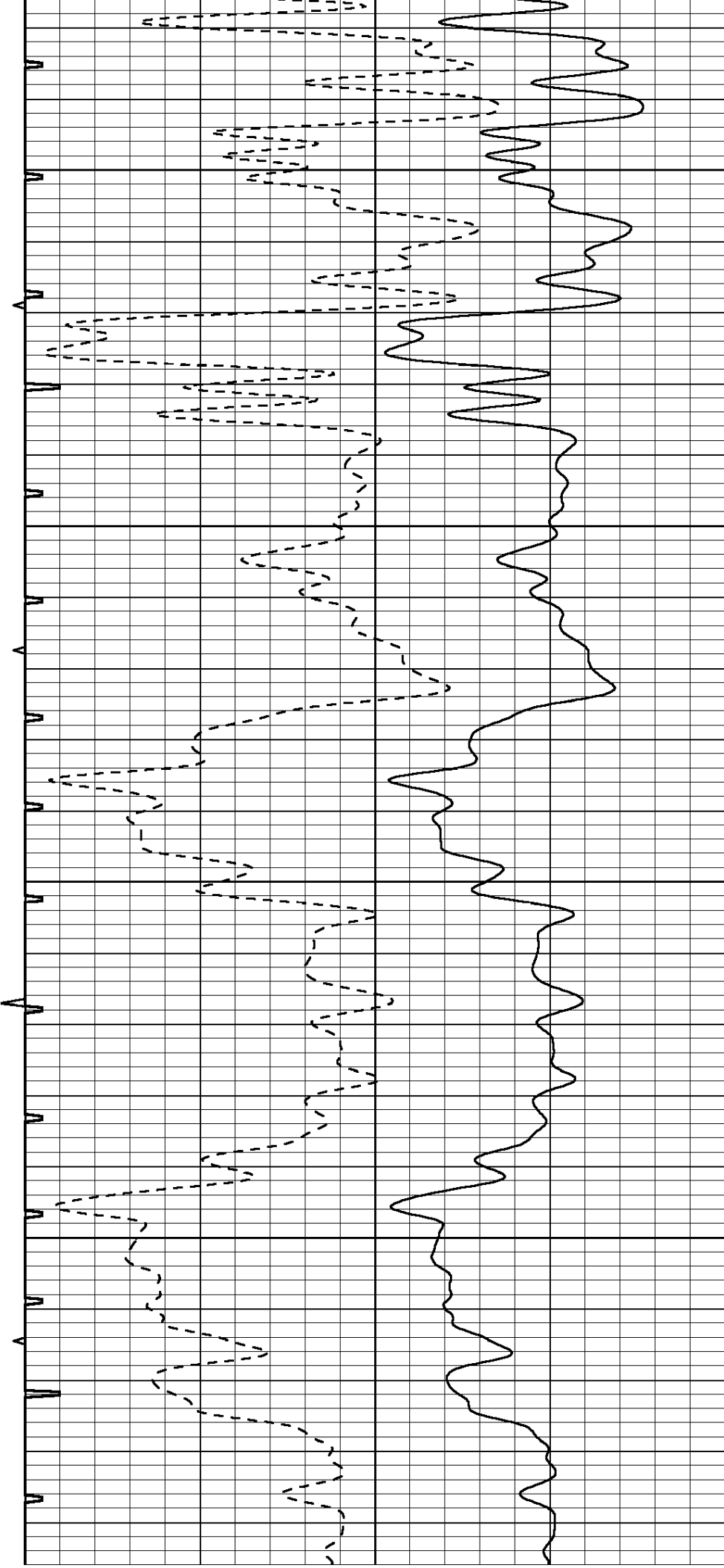


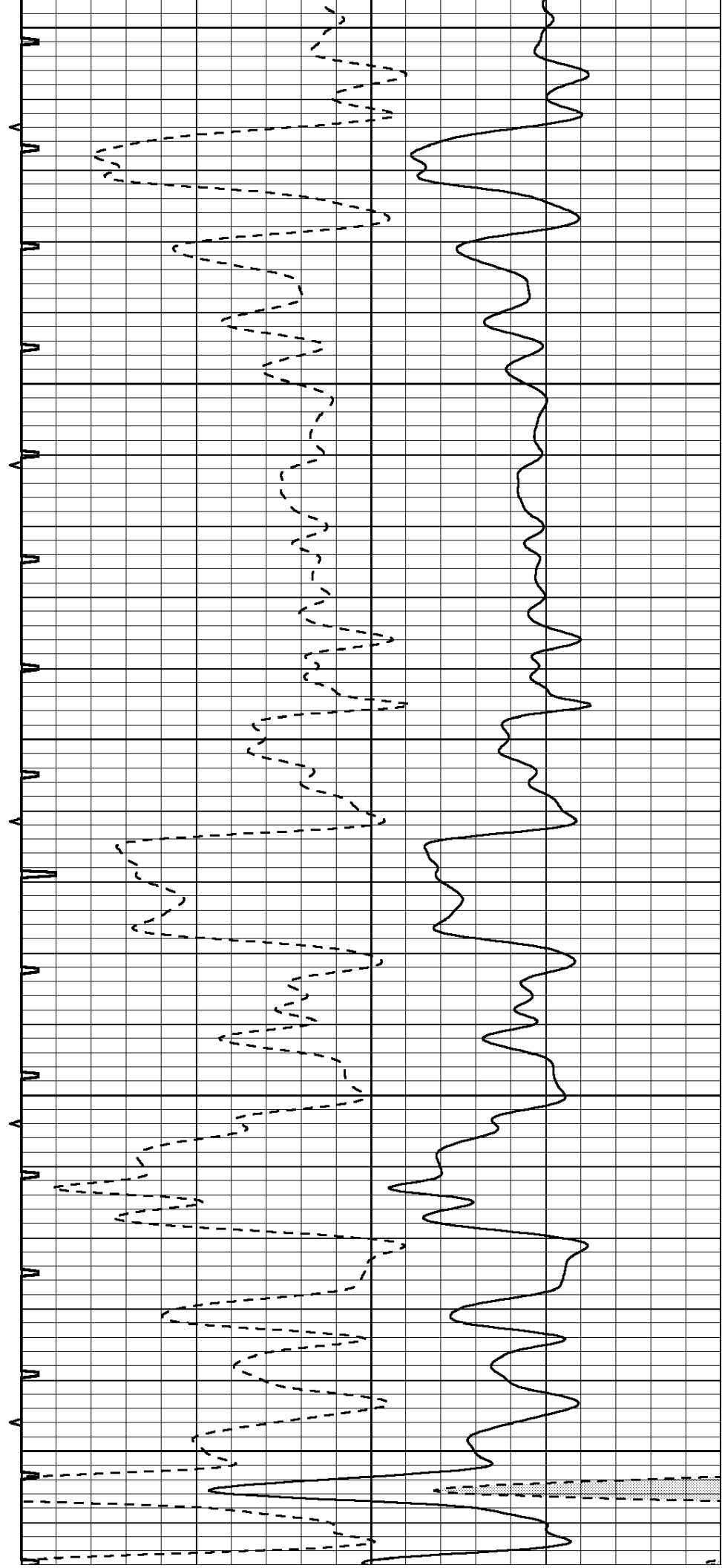
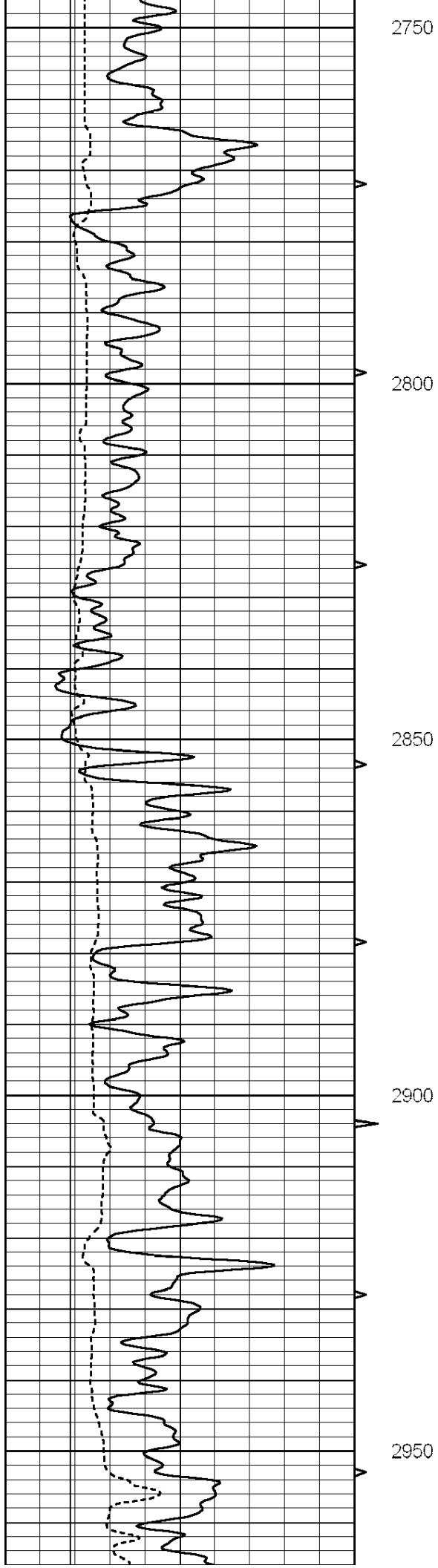
2550

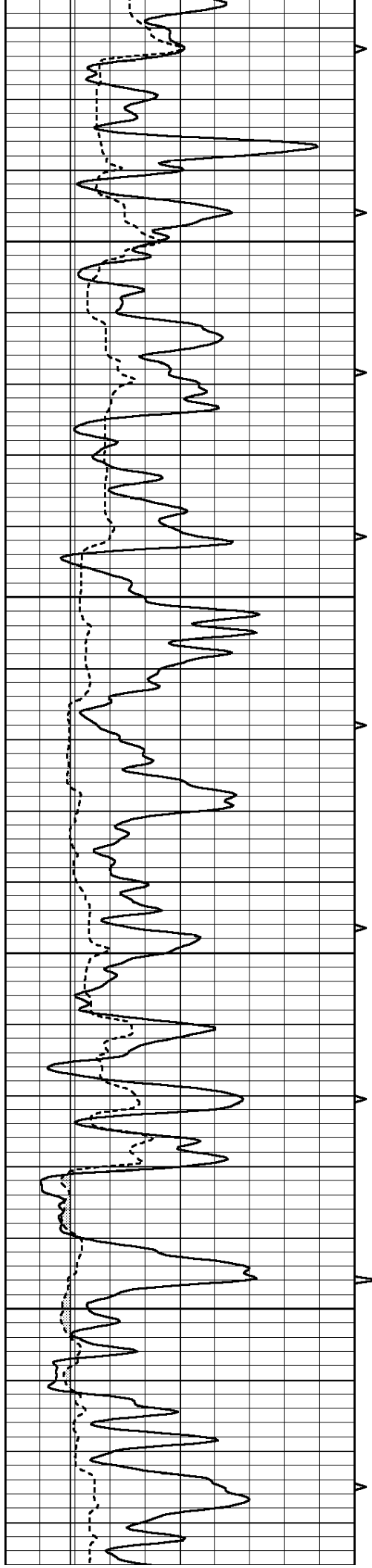
2600

2650

2700





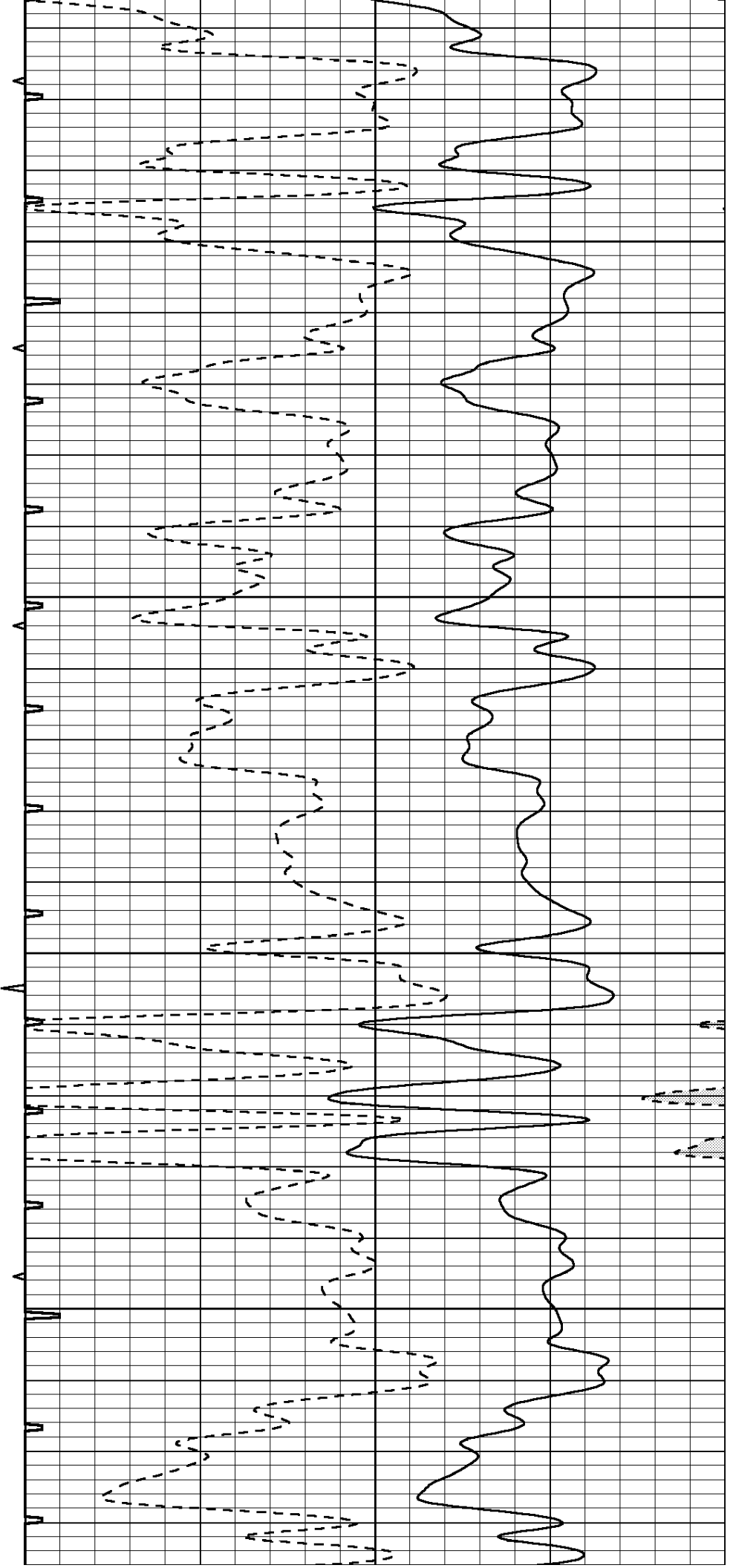


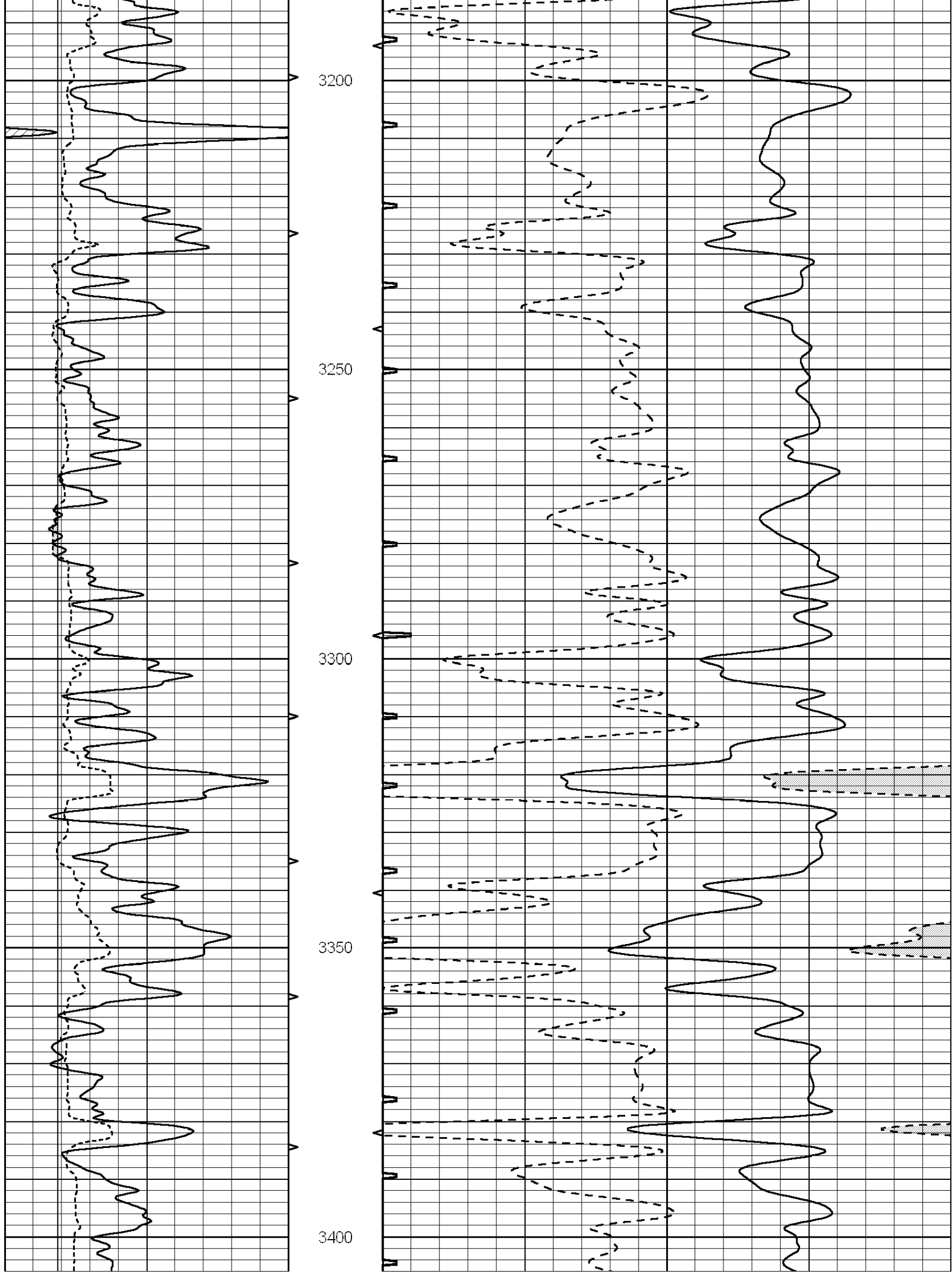
3000

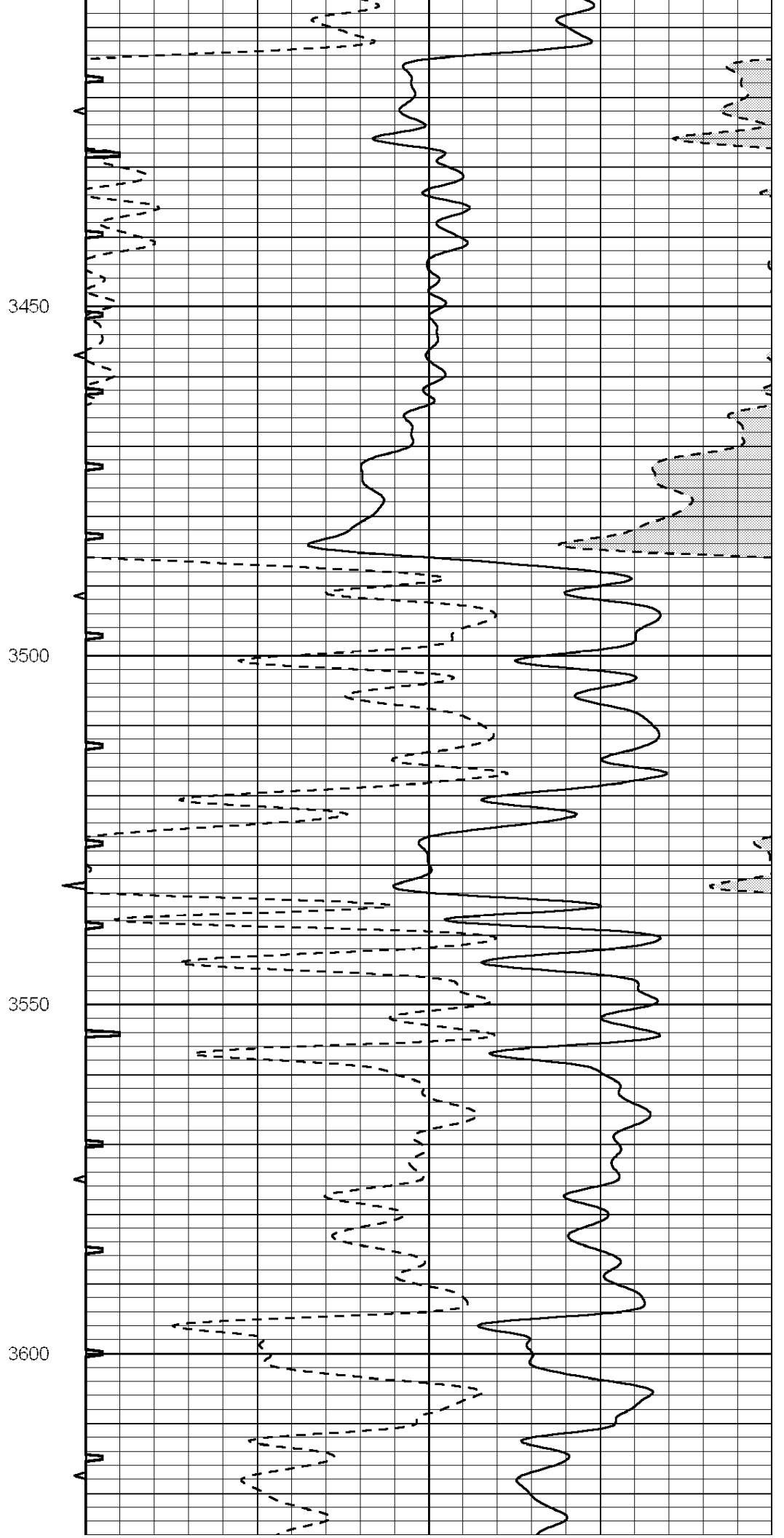
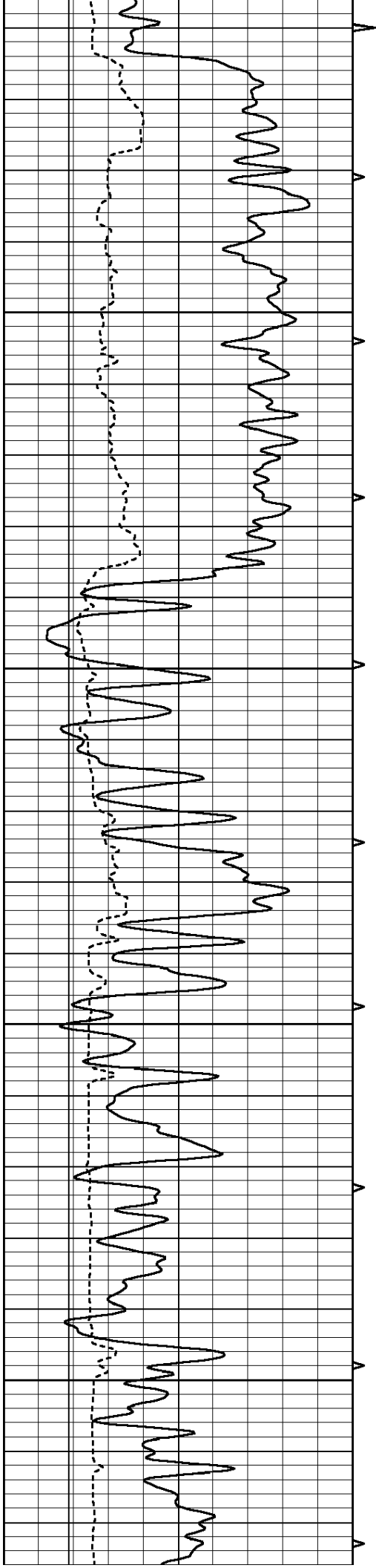
3050

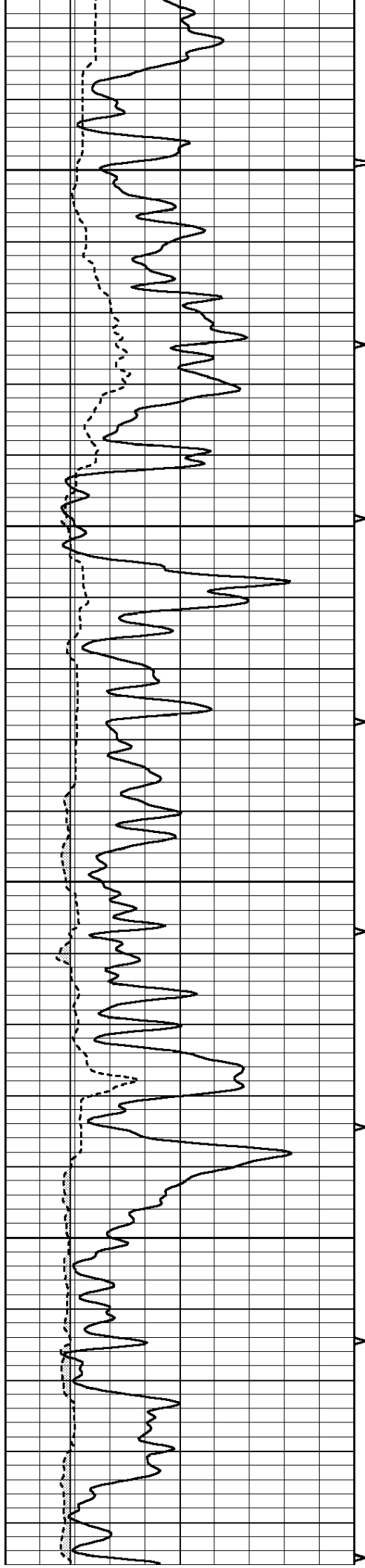
3100

3150







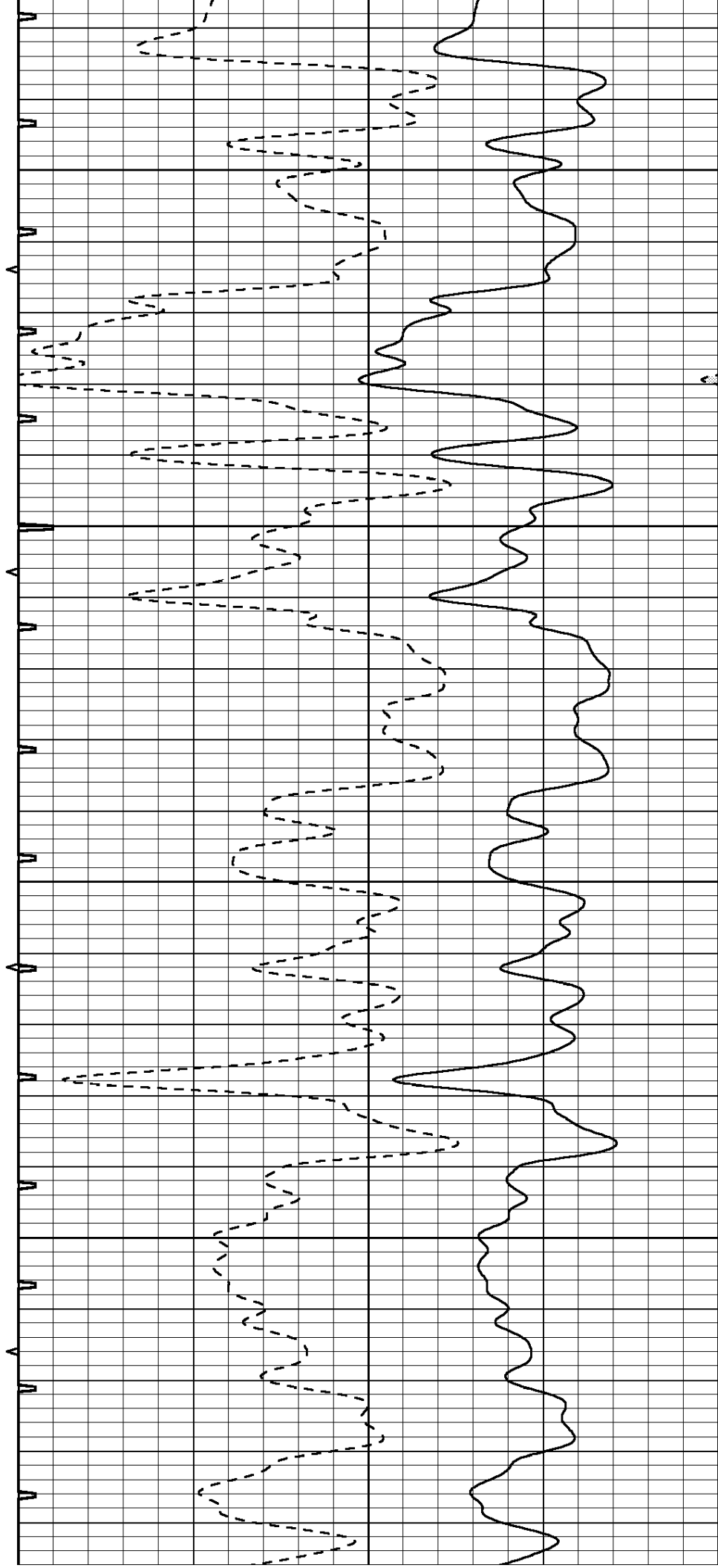


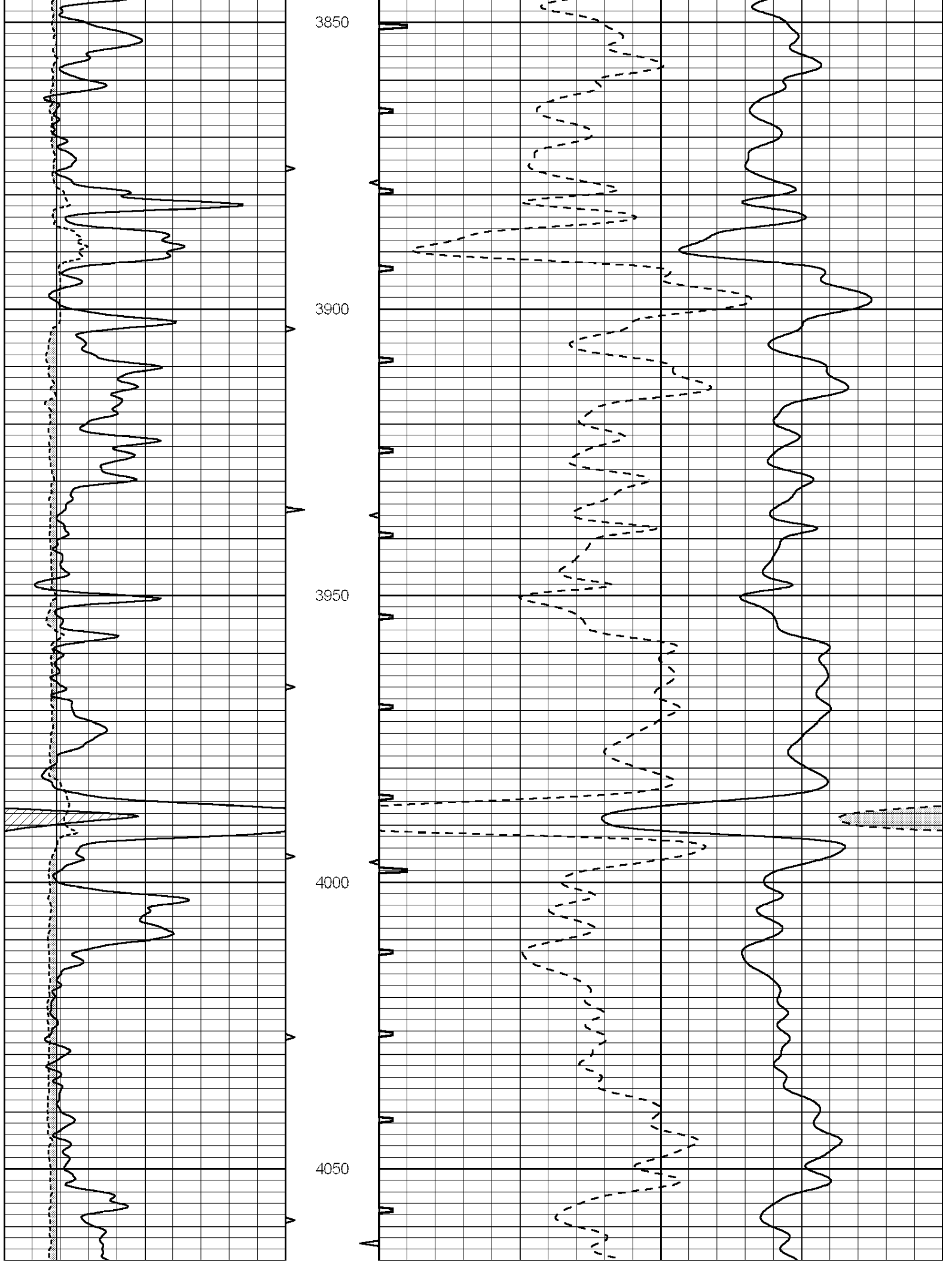
3650

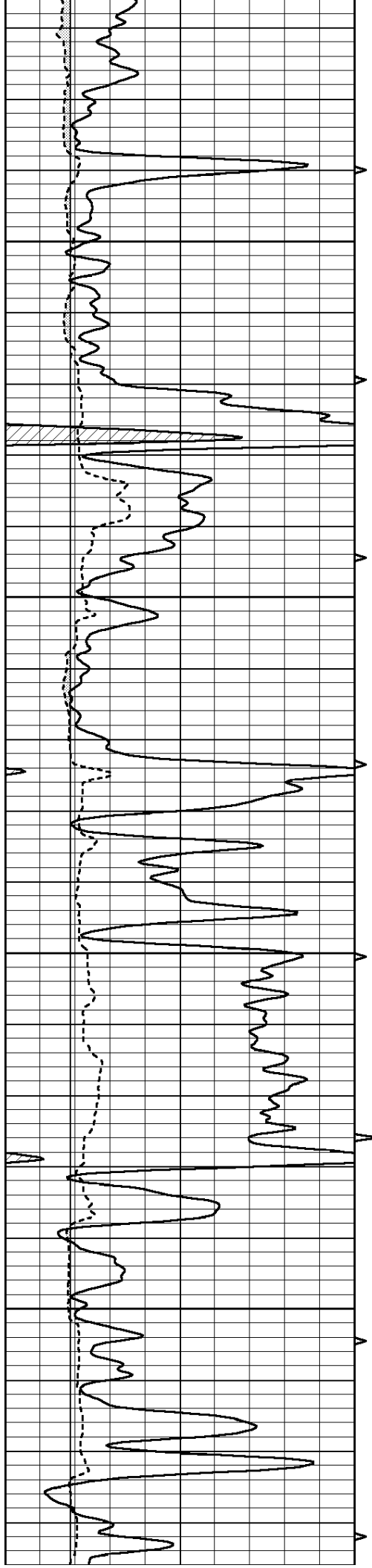
3700

3750

3800





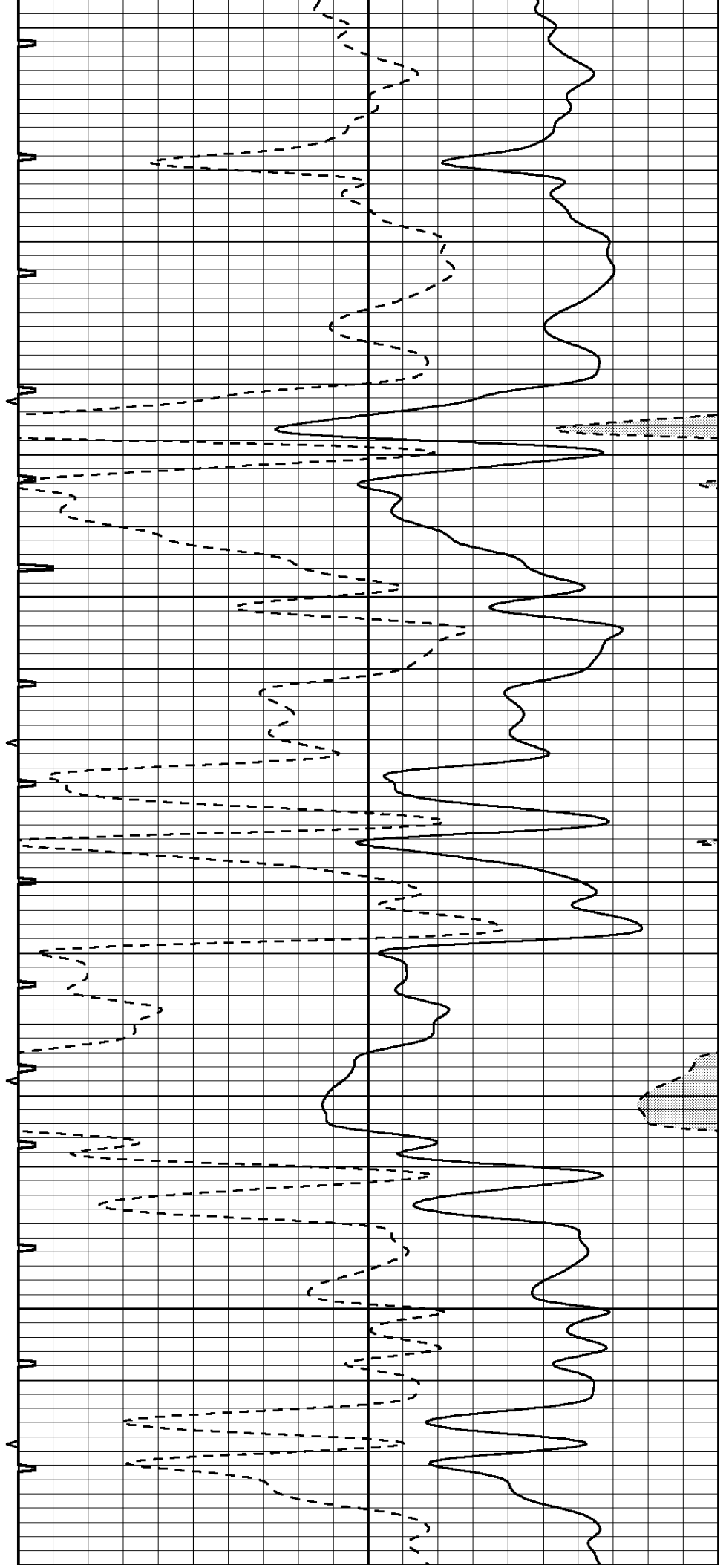


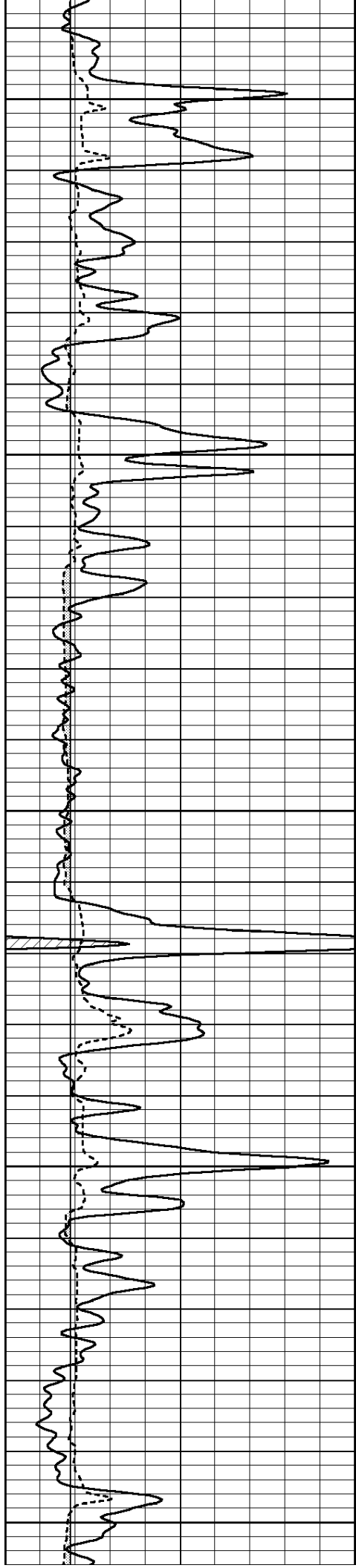
4100

4150

4200

4250





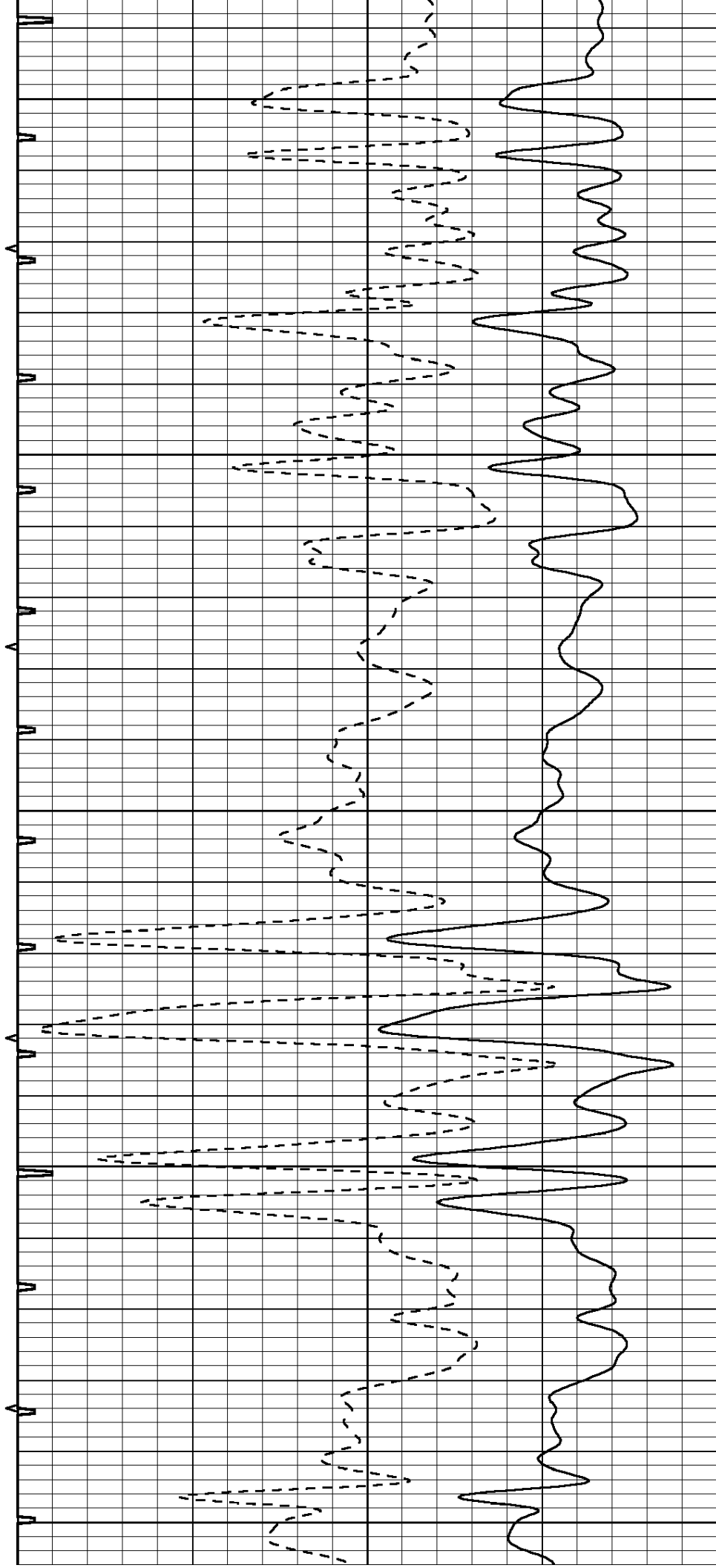
4300

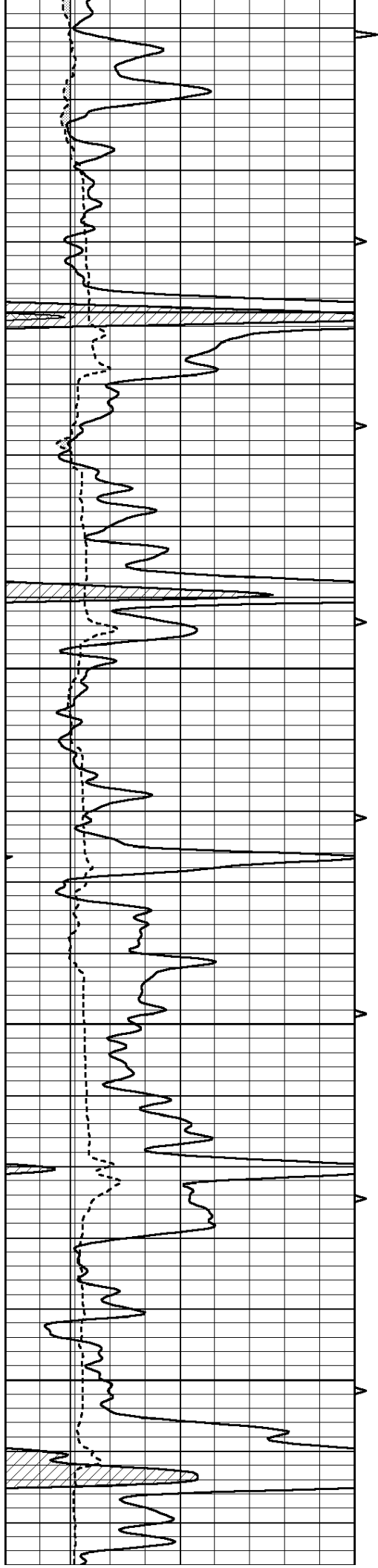
4350

4400

4450

4500



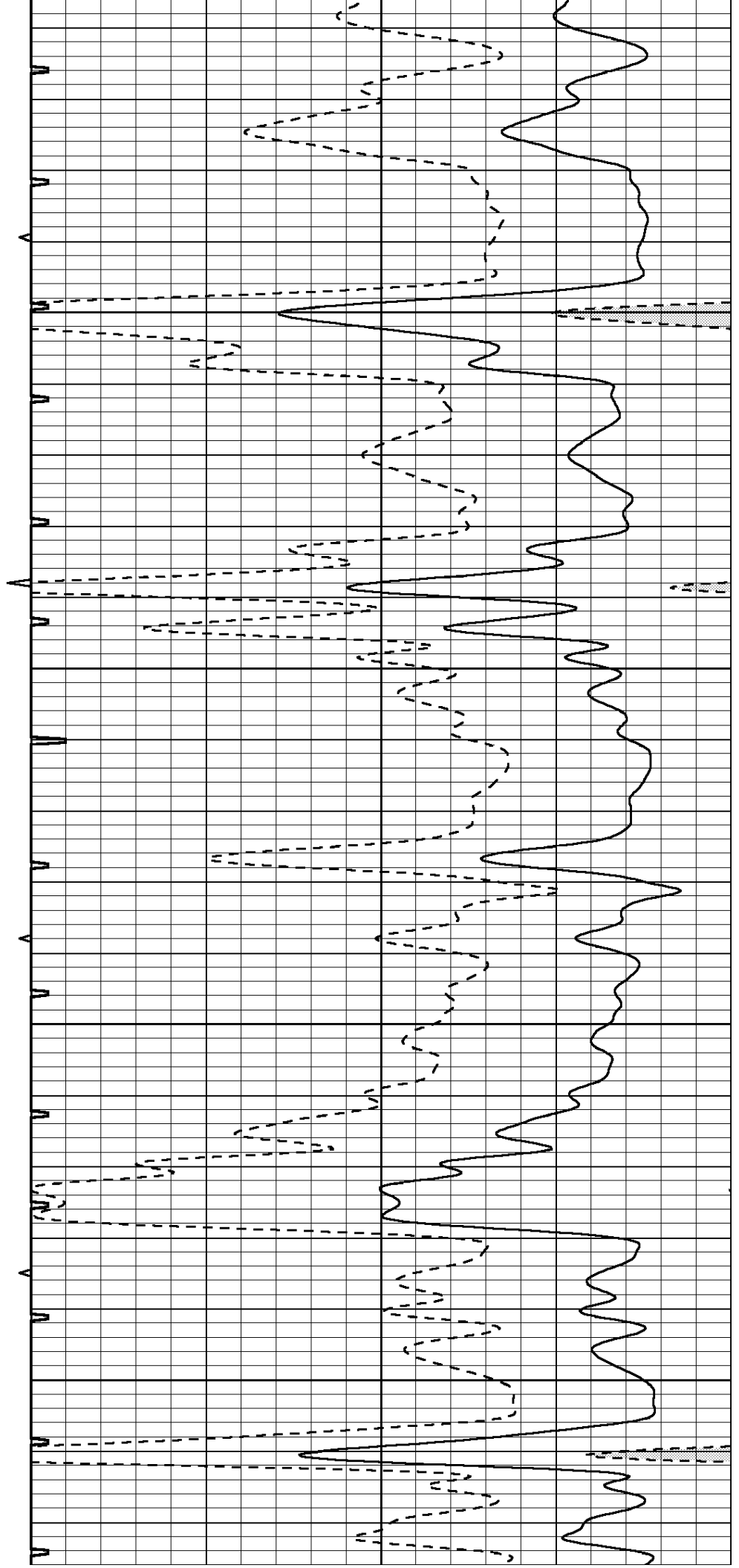


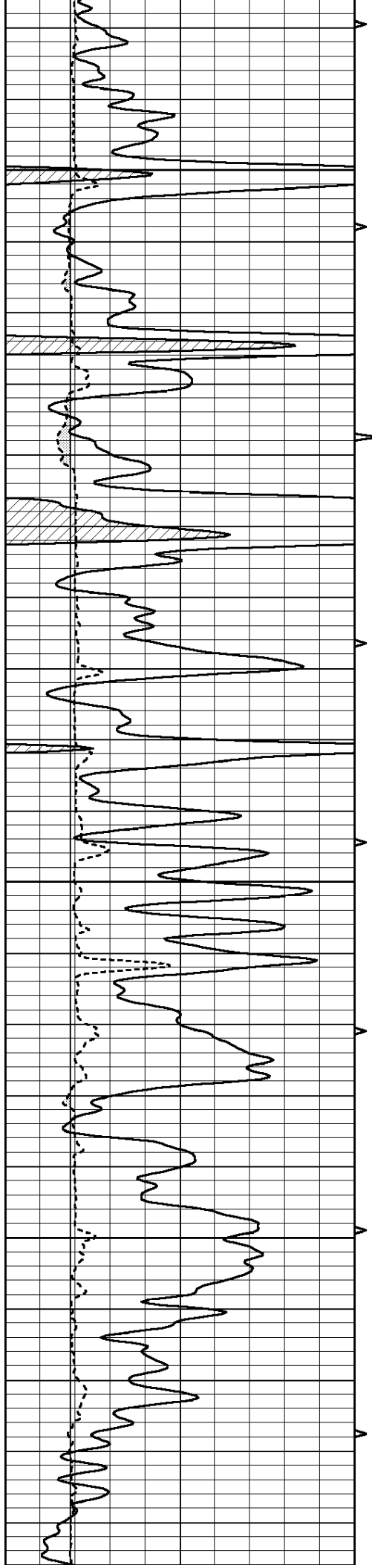
4550

4600

4650

4700



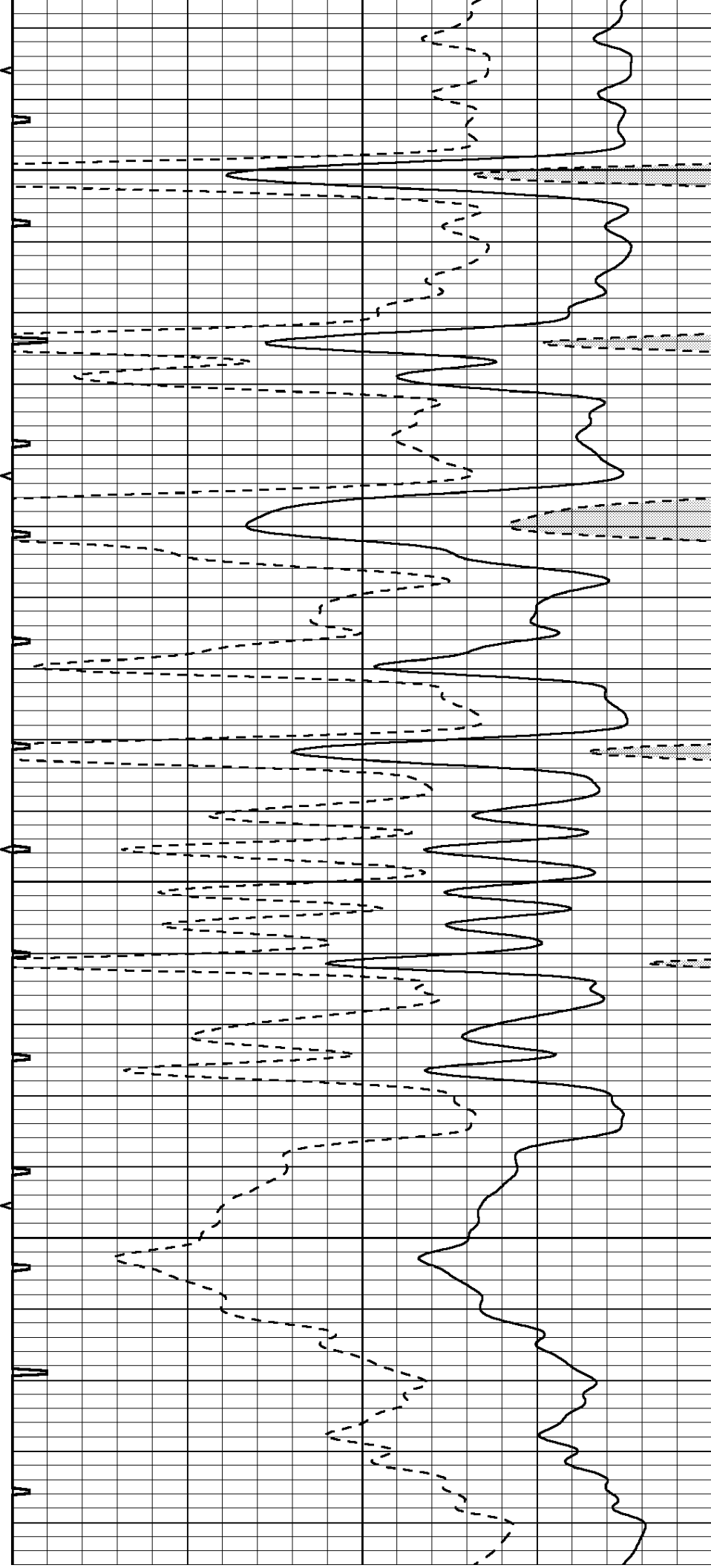


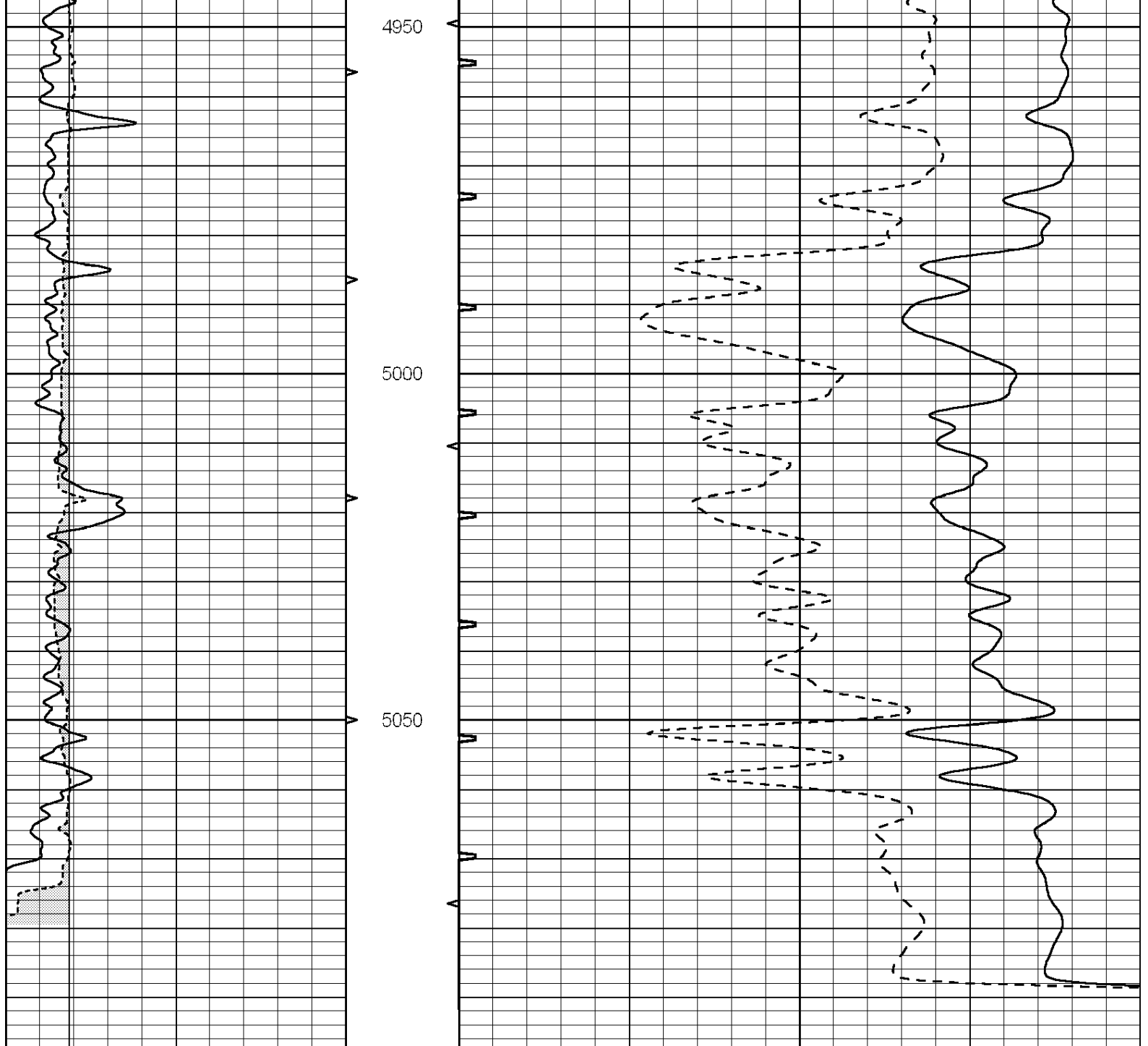
4750

4800

4850

4900

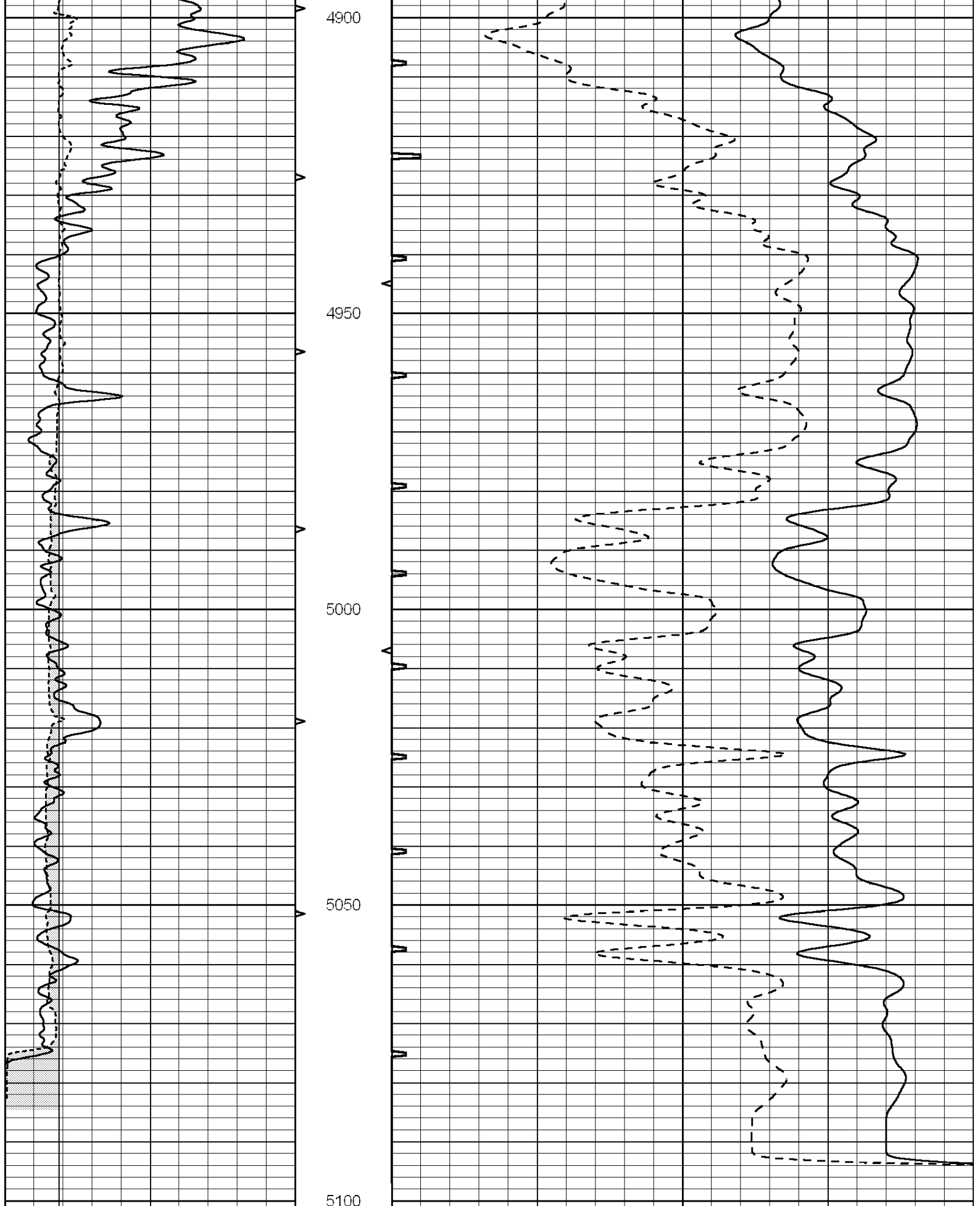




0	GAMMA RAY (GAPI)	150	ABHV	140	DELTA TIME (usec/ft)	40	
6	CALIPER (in)	16	10 (ft3)	0	30	SONIC POROSITY (pu)	-10
			TBHV	0	ITT (msec)	20	
			0 (ft3)	10			

Database File: 40-009992ddn.db
 Dataset Pathname: pass5
 Presentation Format: _slt
 Dataset Creation: Fri Nov 02 00:31:46 2012 by Log Open-Cased 090629
 Charted by: Depth in Feet scaled 1:240

0	GAMMA RAY (GAPI)	150	ABHV	140	DELTA TIME (usec/ft)	40	
6	CALIPER (in)	16	10 (ft3)	0	30	SONIC POROSITY (pu)	-10
			TBHV	0	ITT (msec)	20	
			0 (ft3)	10			



0	GAMMA RAY (GAPI)	150	ABHV	140	DELTA TIME (usec/ft)	40
6	CALIPER (in)	16	10 (ft3)	0 30	SONIC POROSITY (pu)	-10
			TBHV	0	ITT (msec)	20

