



**COMPLETION
& PRODUCTION
SERVICES CO.**

**MICRO
LOG**

Company MID-CONTINENT ENERGY OPER. CO.
Well SLEEPER #1-20
Field WILDCAT
County LANE
State KANSAS

Company MID-CONTINENT ENERGY OPERATING, CO.
Well SLEEPER #1-20
Field WILDCAT
County LANE State KANSAS

Location: API # : 15-101-22408-0000
1000' FNL & 850' FEL
SE - SW - NE - NE
SEC 20 TWP 19S RGE 27W
Permanent Datum GROUND LEVEL Elevation 2718
Log Measured From KELLY BUSHING 10' A.G.L.
Drilling Measured From KELLY BUSHING
Other Services
CDL/CNL/PE
DIL
Elevation
K.B. 2728
D.F. 2726
G.L. 2718

Date	11/9/12
Run Number	TWO
Depth Driller	4700
Depth Logger	4703
Bottom Logged Interval	4701
Top Log Interval	3600
Casing Driller	8 5/8"@307'
Casing Logger	307
Bit Size	7 7/8"
Type Fluid in Hole	CHEMICAL MUD
Density / Viscosity	9.2/58
pH / Fluid Loss	10.5/7.6
Source of Sample	FLOWLINE
Rin @ Meas. Temp	.750@100F
Rmf @ Meas. Temp	.563@100F
Rmc @ Meas. Temp	.900@100F
Source of Rmf / Rmc	MEASUREMENT
Rin @ BHT	.553@122F
Time Circulation Stopped	5 HOURS
Time Logger on Bottom	9:15 P.M.
Maximum Recorded Temperature	122F
Equipment Number	4854
Location	HAYS, KANSAS
Recorded By	JEFF LUEBBERS
Witnessed By	LARRY NICHLOSON

<<< Fold Here >>>

All interpretations are opinions based on inferences from electrical or other measurements and we cannot and do not guarantee the accuracy or correctness of any interpretation, and we shall not, except in the case of gross or willful negligence on our part, be liable or responsible for any loss, costs, damages, or expenses incurred or sustained by anyone resulting from any interpretation made by any of our officers, agents or employees. These interpretations are also subject to our general terms and conditions set out in our current Price Schedule.

Comments

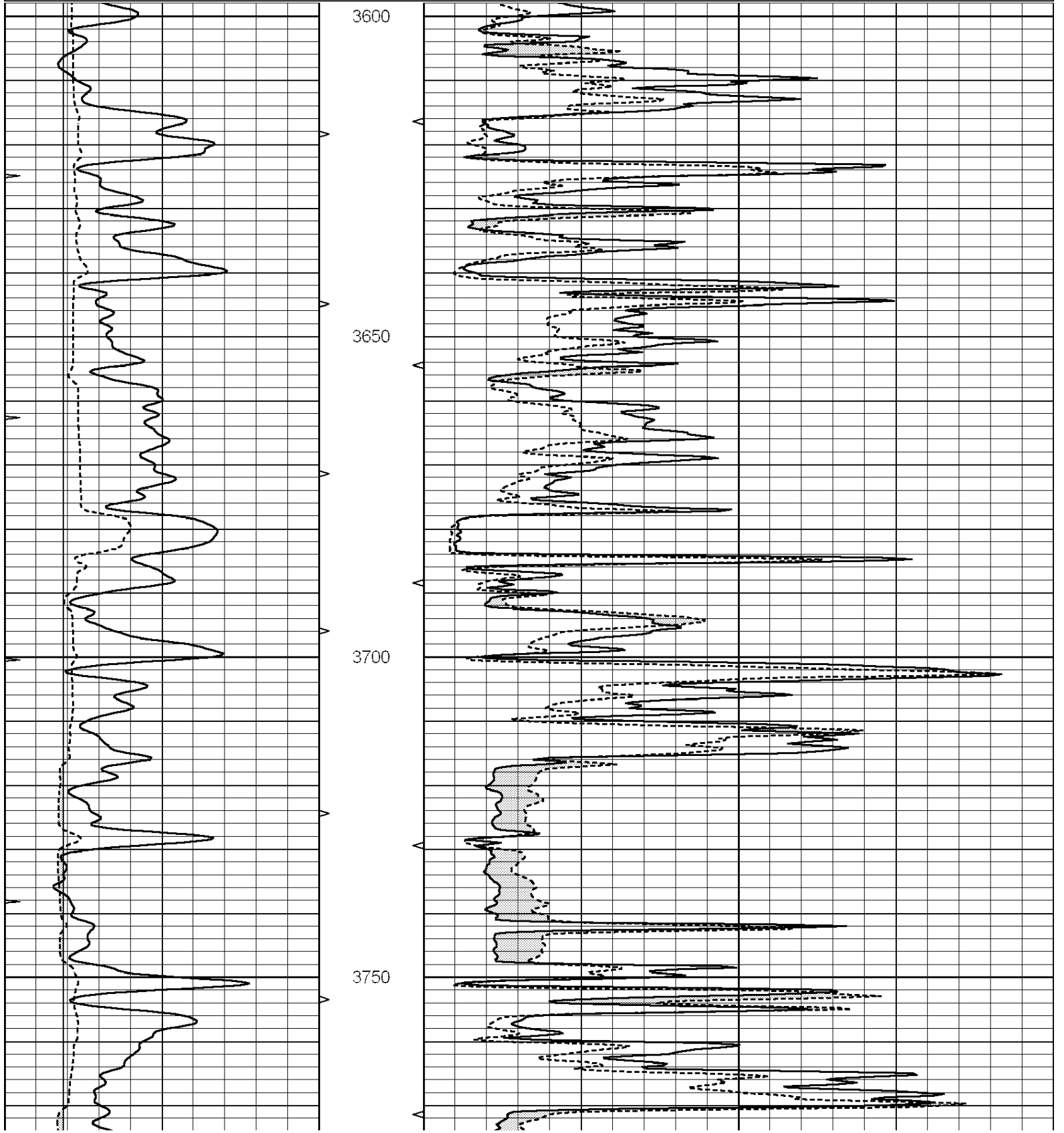
THANK YOU FOR USING "NABORS" HAYS, KANSAS (785) 628-6395
DIRECTIONS
ALAMOTA, KS. (HWY 96 & TURKEY RED RD.) 6S. TO "RD. 90", 1W., S. INTO

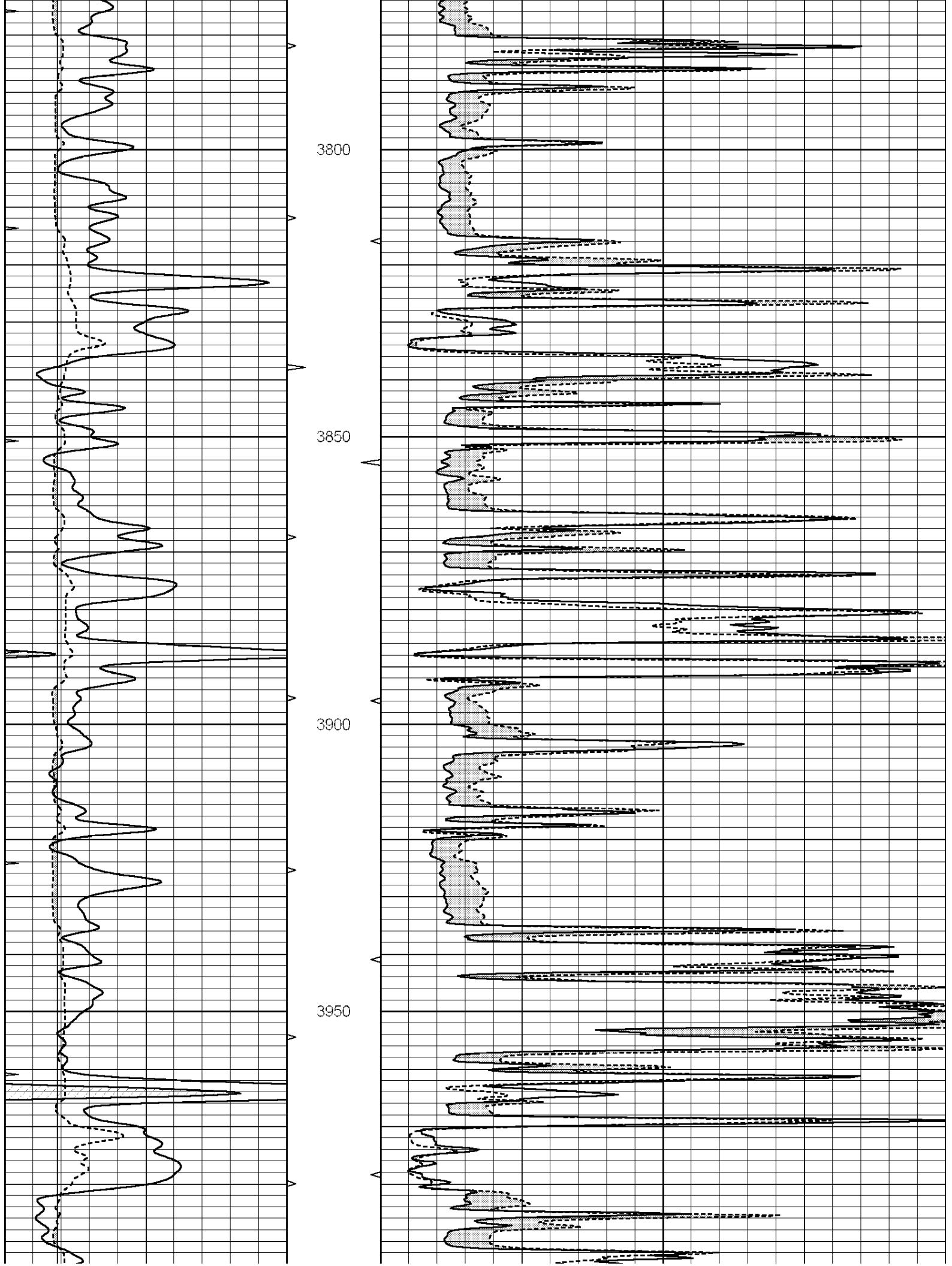


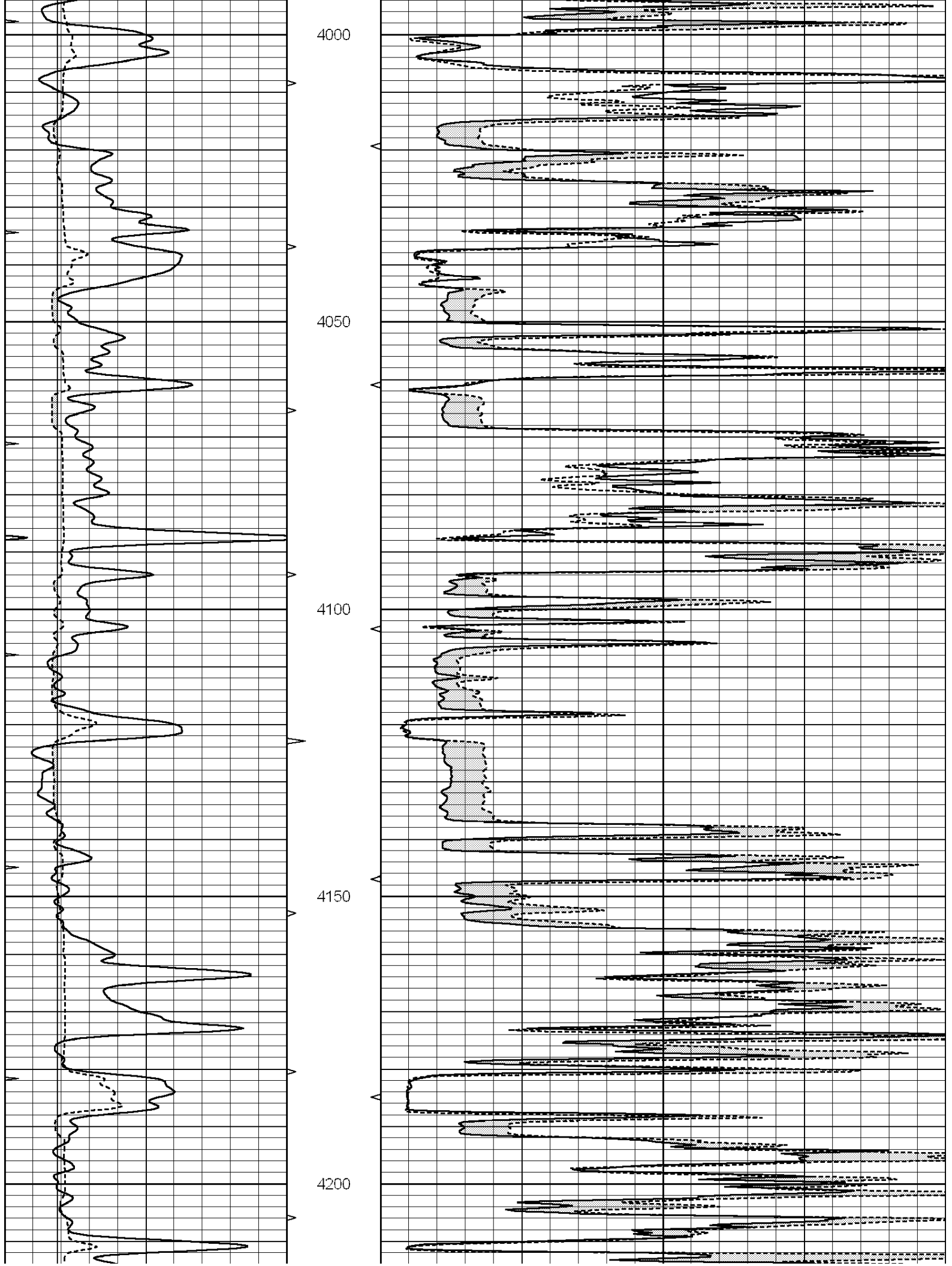
MAIN SECTION

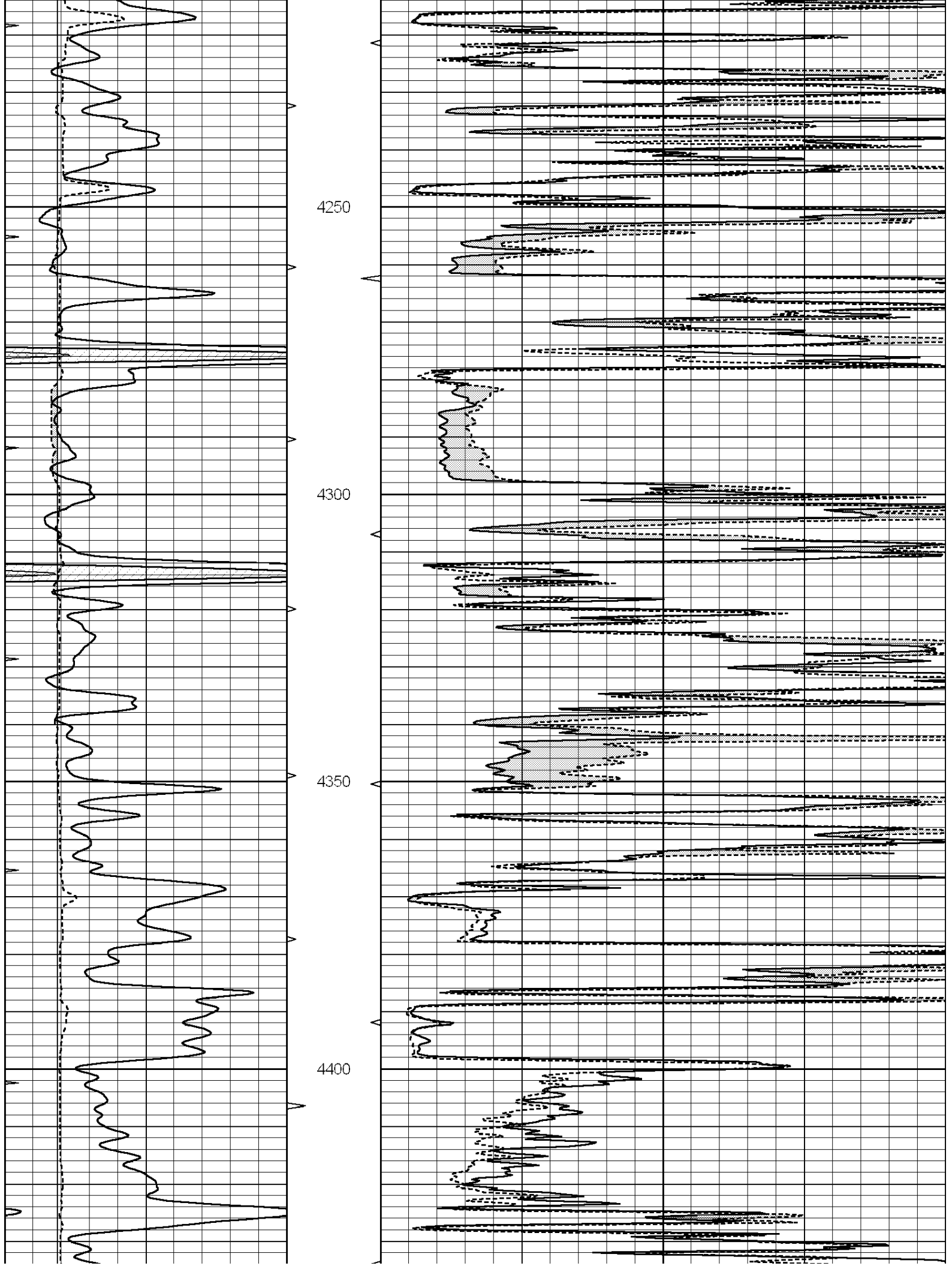
Database File: 010009pe.db
 Dataset Pathname: pass6.5
 Presentation Format: micro
 Dataset Creation: Fri Nov 09 00:20:50 2012 by Calc SOC 120430
 Charted by: Depth in Feet scaled 1:240

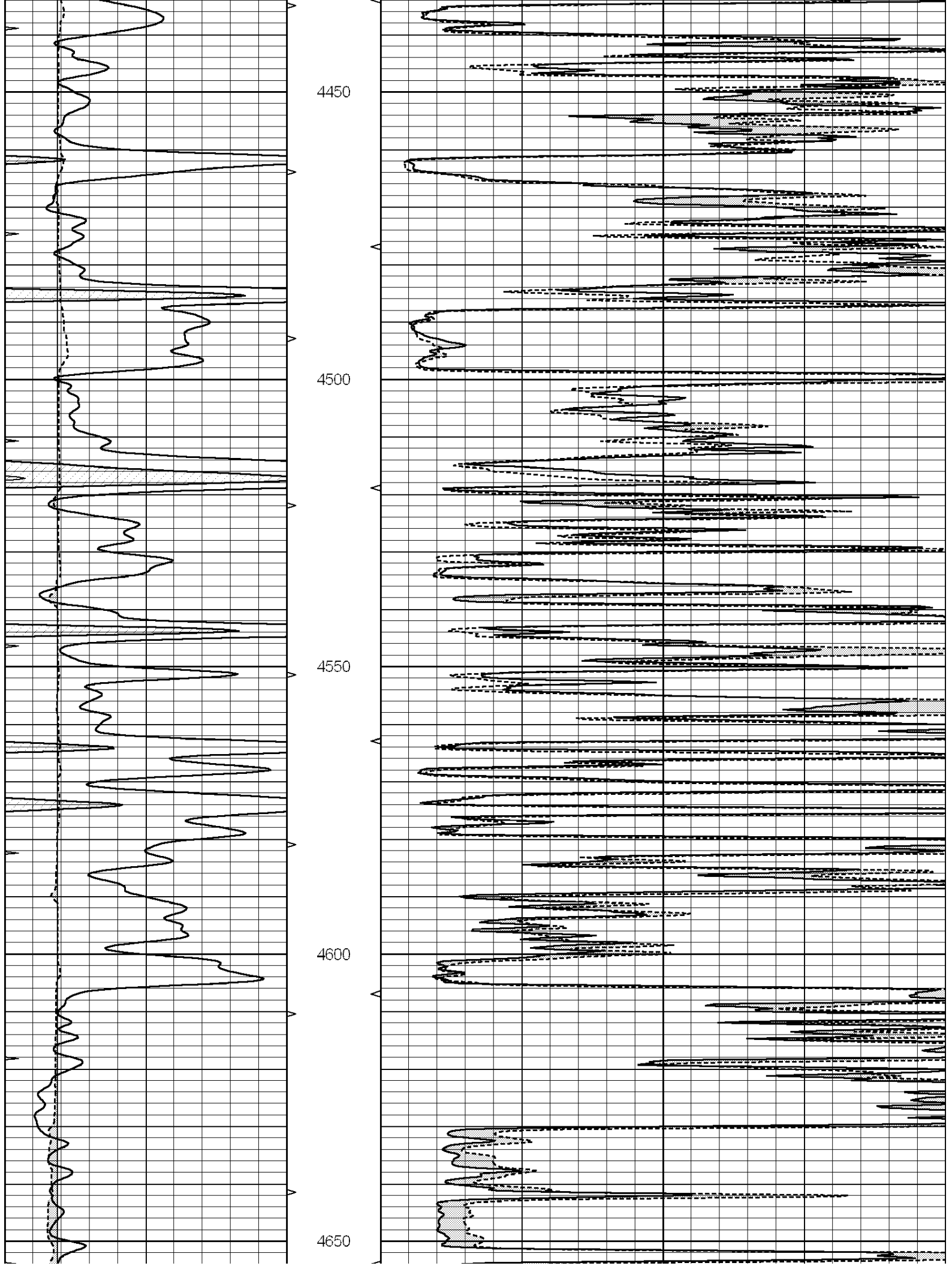
0	GAMMA RAY (GAPI)	150	ABHV	0	MEL1.5 (Ohm-m)	40
6	CALIPER (in)	16	10 (ft3)	0	MEL2.0 (Ohm-m)	40
0	MINMK	20	TBHV			
			0 (ft3)	10		

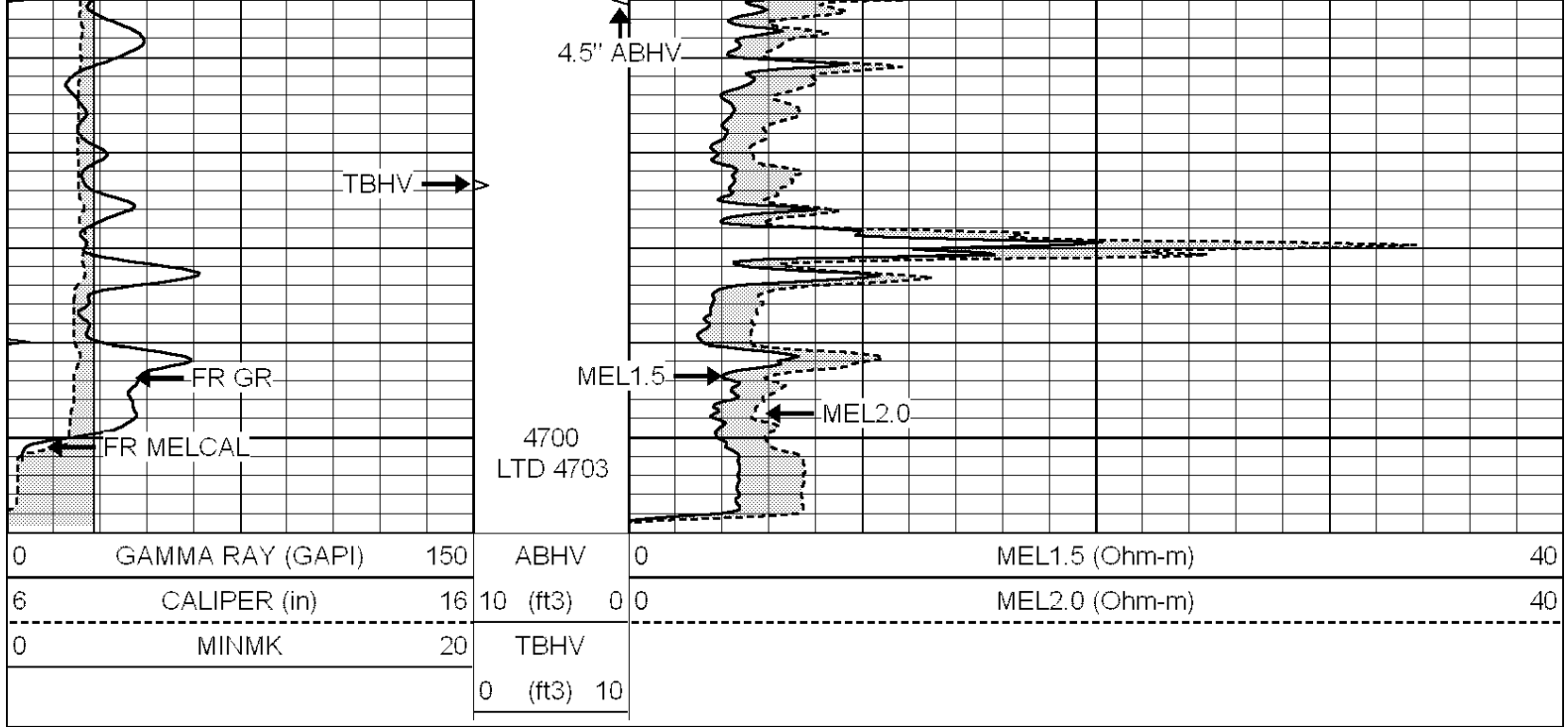










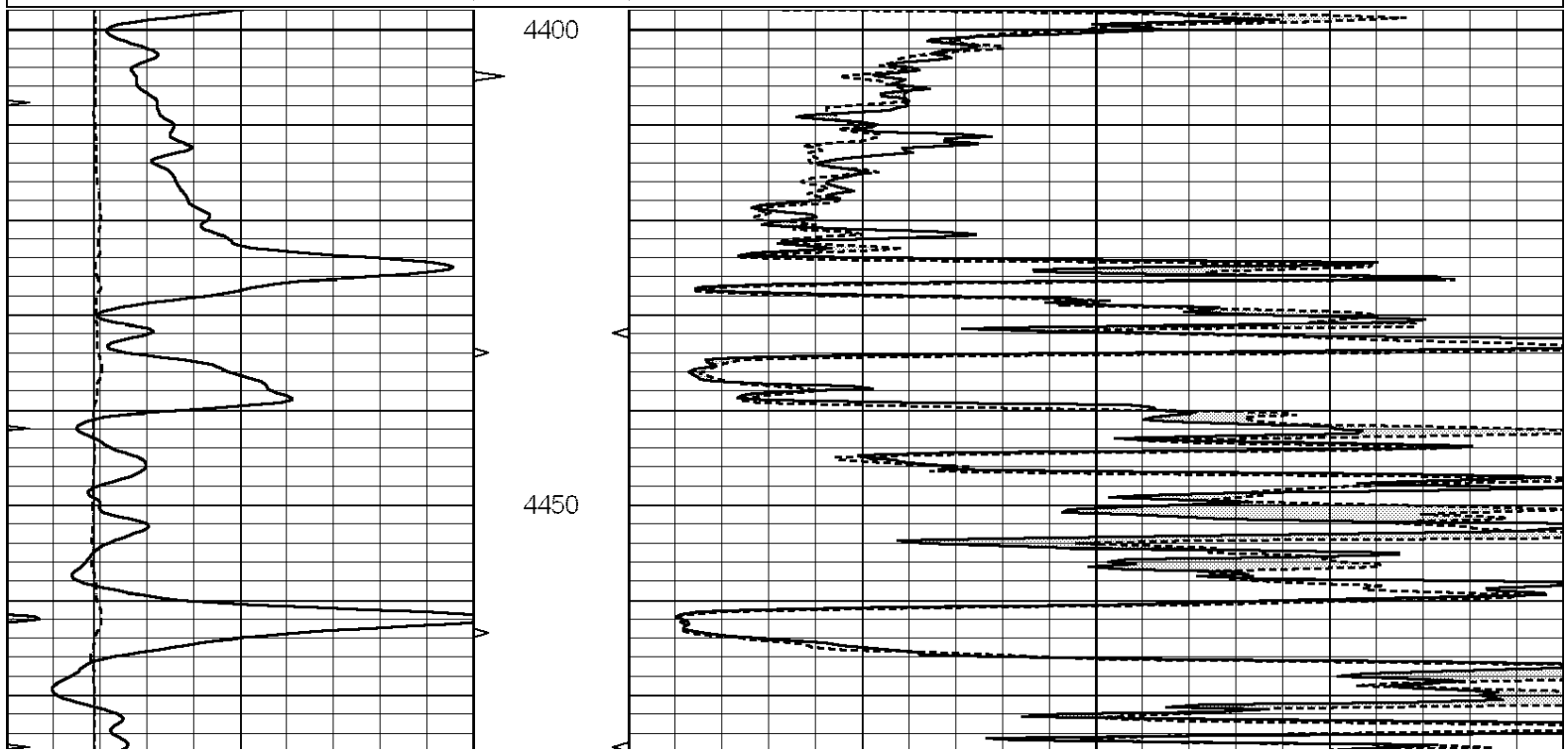


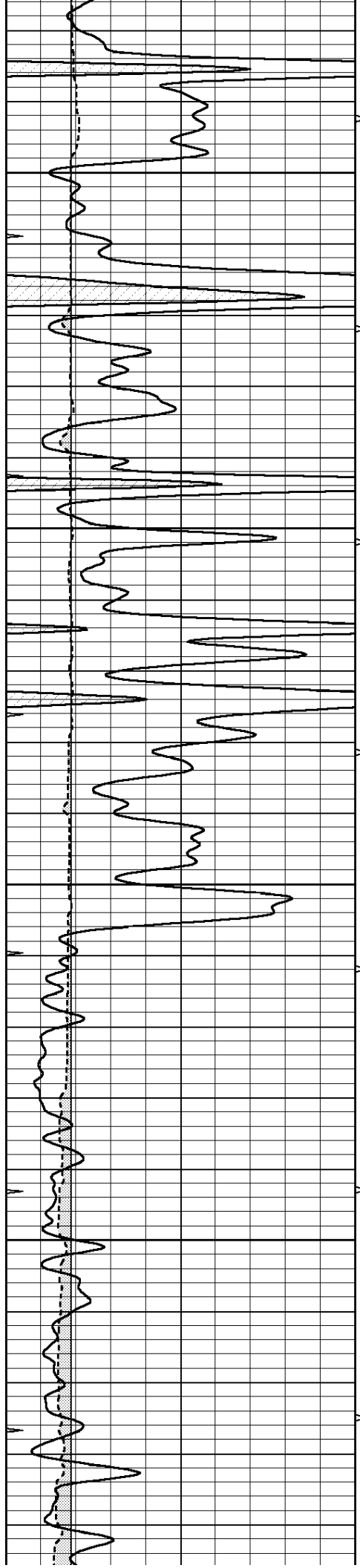
NABORS
COMPLETION
& PRODUCTION
SERVICES CO.

REPEAT SECTION

Database File: 010009pe.db
 Dataset Pathname: pass5.2
 Presentation Format: micro
 Dataset Creation: Fri Nov 09 00:00:12 2012 by Calc SOC 120430
 Charted by: Depth in Feet scaled 1:240

0	GAMMA RAY (GAPI)	150	ABHV	0	MEL1.5 (Ohm-m)	40
6	CALIPER (in)	16	10 (ft3)	0	MEL2.0 (Ohm-m)	40
0	MINMK	20	TBHV			
			0 (ft3)	10		



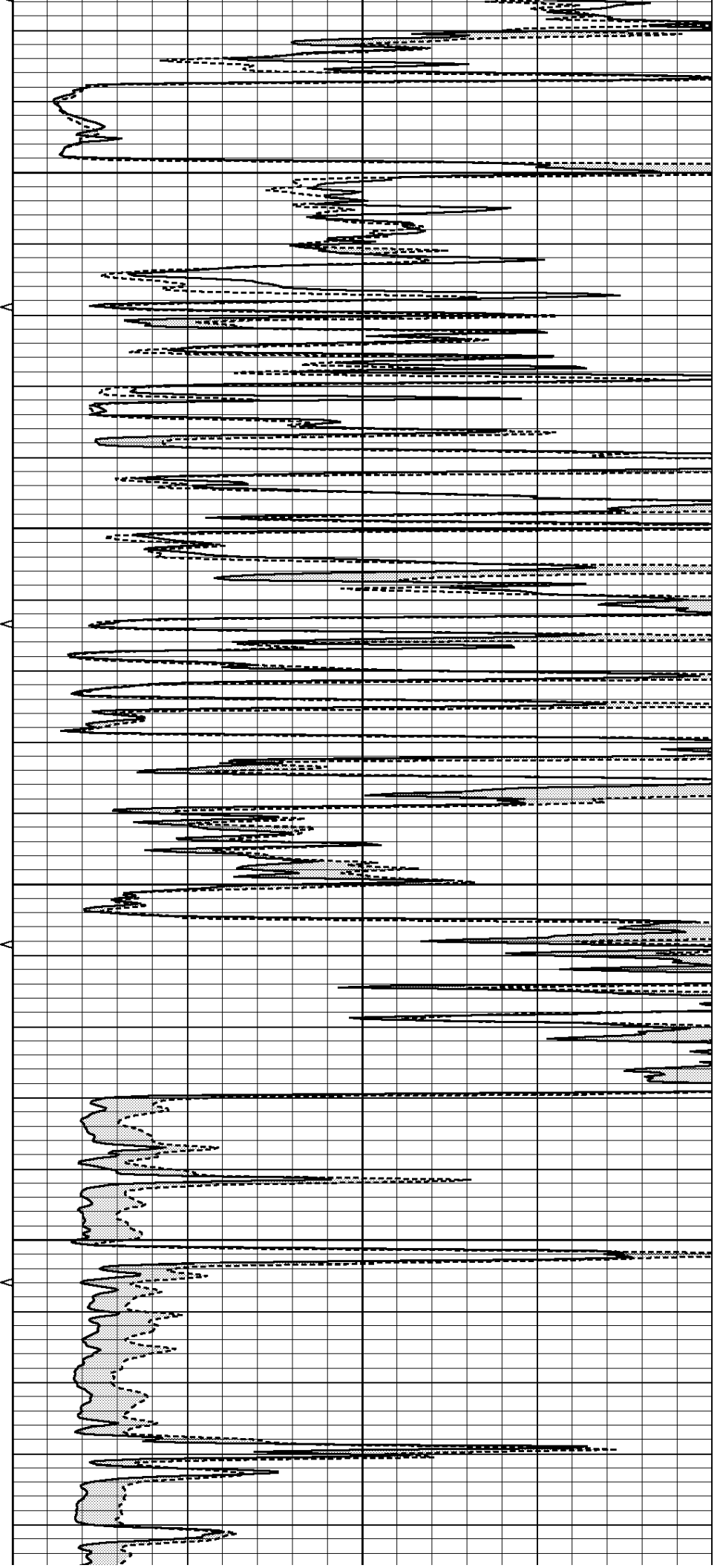


4500

4550

4600

4650



4700						
0	GAMMA RAY (GAPI)	150	ABHV	0	MEL1.5 (Ohm-m)	40
6	CALIPER (in)	16	10 (ft3)	0	MEL2.0 (Ohm-m)	40
0	MINMK	20	TBHV			
			0 (ft3)	10		

Calibration Report

Database File: 010009pe.db
 Dataset Pathname: pass6.5
 Dataset Creation: Fri Nov 09 00:20:50 2012 by Calc SOC 120430

MICRO Calibration Report

Serial Number:	2	
Tool Model:	PROBE	
Performed:	Thu Nov 08 23:43:45 2012	
Caliper Calibration:	Gain=3.929	Offset=3.858
References	Low Cal	High Cal
Readings	8.300	15.000
	1.130	2.835
1.5" Calibration:	Gain=22.000	Offset=0.000
References	Low Cal	High Cal
Readings	0.000	20.000
	0.065	1.210
2" Calibration:	Gain=35.000	Offset=-0.300
References	Low Cal	High Cal
Readings	0.000	20.000
	0.012	1.043

Gamma Ray Calibration Report

Serial Number:	GR4	
Tool Model:	OPEN	
Performed:	Thu Nov 08 23:43:49 2012	
Calibrator Value:	200.0	GAPI
Background Reading:	0.0	cps
Calibrator Reading:	189.0	cps
Sensitivity:	1.5000	GAPI/cps